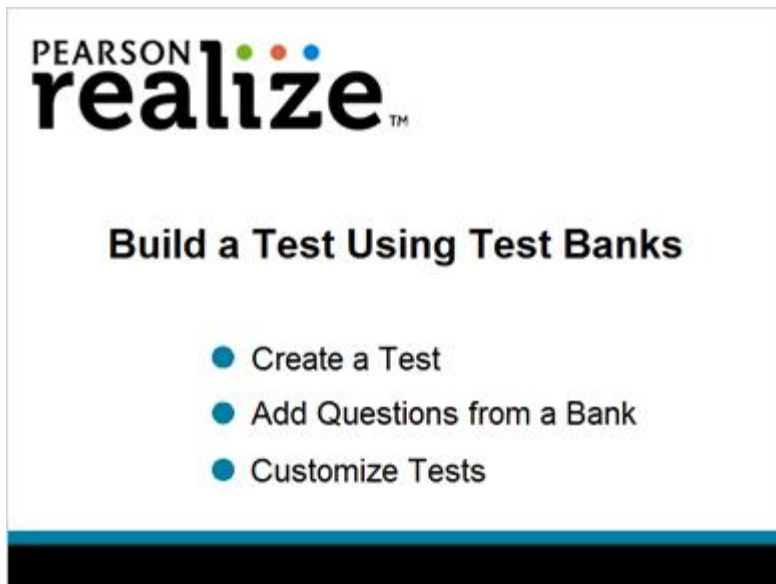


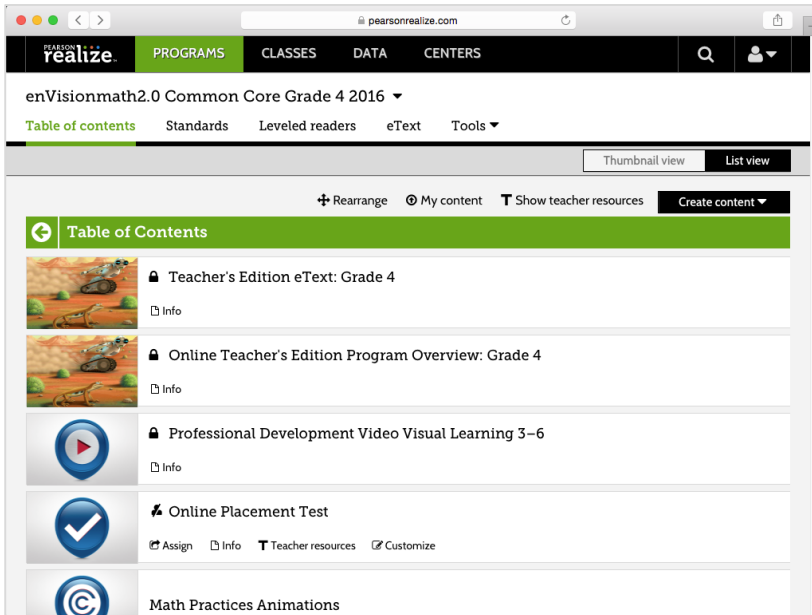
Build A Test Using Test Banks

Build A Test Using Test Banks



Hi, and welcome to My Pearson Training. In this tutorial, you will learn how to create a test in Realize, and add questions from a Test Bank. You will also learn how to customize your tests to enhance learning.

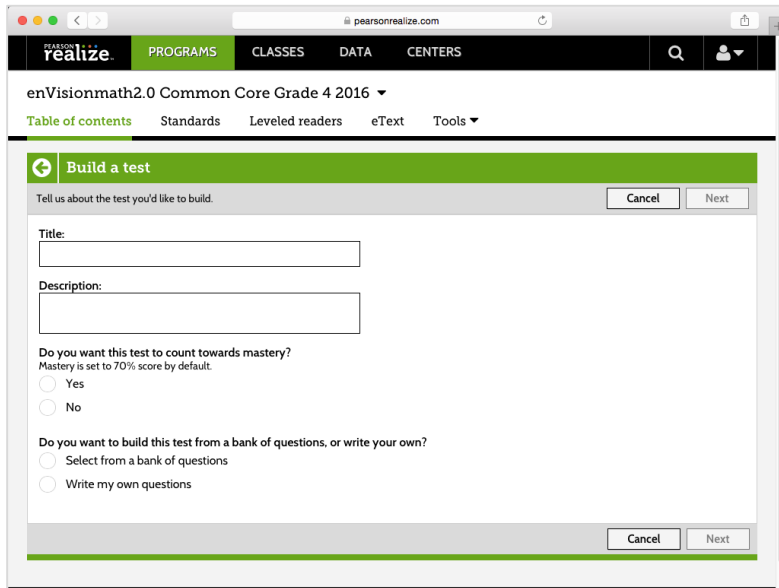
Introduction



The Build a Test page enables teachers to create custom tests or build a test from a Realize test bank by selecting an entire bank or individual questions.

Test banks allow you to add pre-written items from available test banks to your test. Once the questions are added, you can customize the assessment.

Create a Test



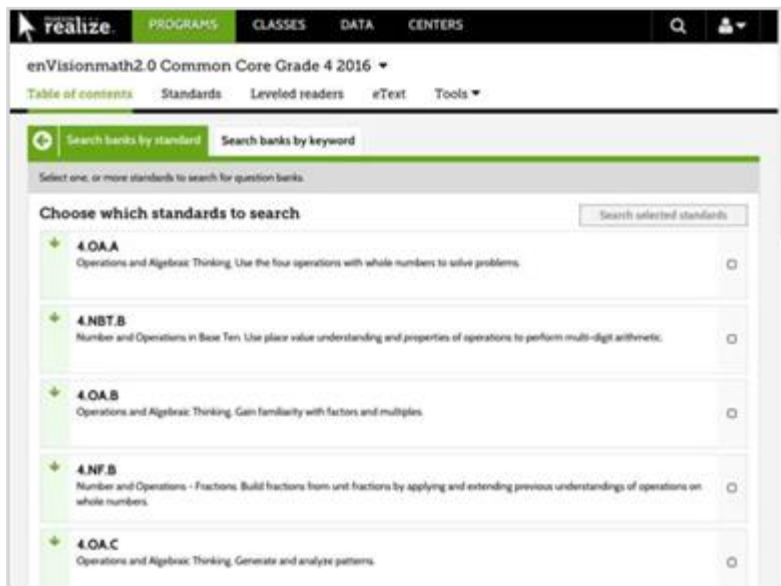
The screenshot shows a web browser window with the URL pearsonrealize.com. The navigation bar includes 'realize', 'PROGRAMS', 'CLASSES', 'DATA', and 'CENTERS'. The current page is 'enVisionmath2.0 Common Core Grade 4 2016'. A sub-menu is open with options: 'Table of contents', 'Standards', 'Leveled readers', 'eText', and 'Tools'. The 'Build a test' form is displayed, featuring a title and description input field, a mastery percentage question (70% default), and a question source selection (bank of questions or own questions). 'Cancel' and 'Next' buttons are present at the top and bottom of the form.

Sign into your Realize account to start building a test.

- First, navigate to the **Table of Contents** page for the program for which you want to build a test.
- Select **Create content** and **Build a test**.
- Enter the test **Title** and a detailed description of the test.
- Select whether to count this test towards mastery, which is set to 70% by default.
- Choose whether you want to build a test using questions from a test bank, or use your own questions.
- Then, click **Next**.

Now you're ready to add questions to your test.

Using Test Banks



First, choose a search method to find test questions. You can search banks by standard or search banks by keyword.

On the Search banks by standard tab, select one or more standards and then click **Search selected standards**.

Review the banks for the content you want to add to your test.

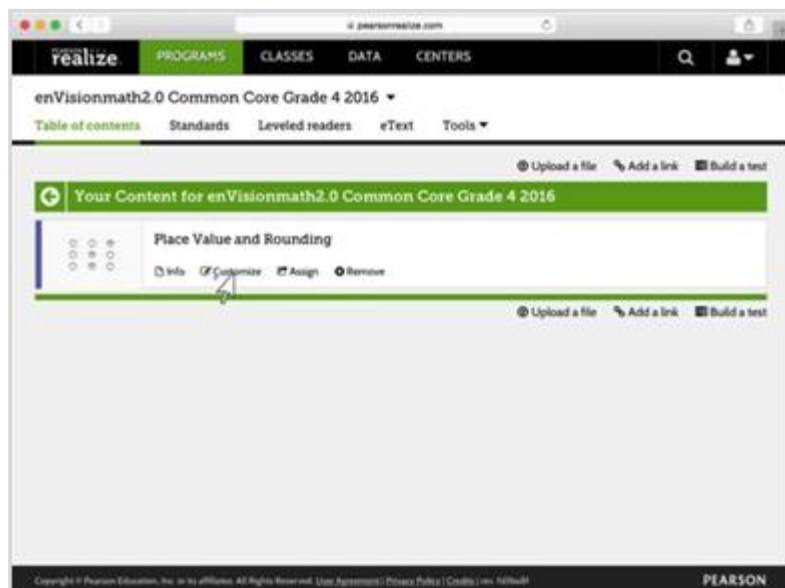
Each bank will list the total number of questions in each. Click the bank name to view the test questions.

Click **Show question** to see question content, along with the answers. Many questions have images and audio to further enhance instruction. Select the checkbox next to the questions to add the questions to your test.

The Test Builder will save your progress as you develop your test, and keep track of how many questions you have added from the test banks. As you add questions, you will see the **number of questions selected** increase.

When you are finished adding questions, click **I'm done adding questions**.

Customize and Review Your Test



Now you can customize your test.

To edit the test information, click the **Edit** link on the far right of the title and description of the test. Click **Save** when you are finished.

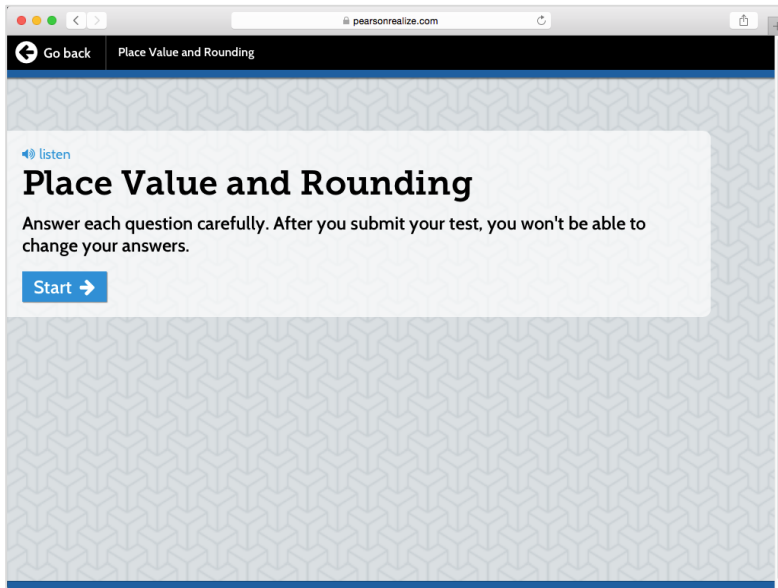
You can also customize your test questions by adding or removing test questions, or changing the question order using drag and drop.

To review an individual question on your test, click **Show question**. To remove a question from the test, click the trash can icon.

Click **Done** when you are finished reviewing your test. Your edited test displays with your changes.

**Please note that teachers cannot edit test bank items.

View Tests



To view your test, Click **My content** from the Table of Contents page. All tests you have created will be listed here.

Choose **Customize** to edit your description and questions, click **Assign** to assign your test to students, or click **Remove** to delete your test.

Click the title of the test to view the test in the test player. This is the view that students will see when they take the assessment.

Learn More



To learn more about this and other Realize topics, visit MyPearsonTraining.com. Thank you for joining me for this tutorial.