


# Rear View Mirror Discoloration

**Service Category** Vehicle Interior

**Section** Mirror (int)

**Market** USA

Lexus Supports  
ASE Certification 

## Applicability

YEAR(S)	MODEL(S)	ADDITIONAL INFORMATION
2006 - 2009	GS300, GS350, GS430, GS450H, GS460	

## Introduction

Some 2006 – 2009 model year GS vehicles may exhibit discoloration/distortion of the inner rear view mirror. A service part kit (mirror and frame) is available to address this condition.

**Figure 1.**



## Rear View Mirror Discoloration

### Production Change Information

This bulletin applies to vehicles produced **BEFORE** the Production Change Effective VINs shown below.

MODEL	VDS	PRODUCTION CHANGE EFFECTIVE VIN
GS 300	CH96S	JTHCH96S#60021076
	BH96S	JTHBH96S#65045858
GS 350	CE96S	JTHCE96S#90024011
	BE96S	JTHBE96S#90046626
GS 430	BN96S	JTHBN96S#75017680
GS 450h	BC96S	JTHBC96S#95020111
GS 460	BL96S	JTHBL96S#95003712

### Warranty Information

OP CODE	DESCRIPTION	TIME	OFF	T1	T2
N/A	Not Applicable to Warranty	-	-	-	-

### Parts Information

PART NUMBER		PART NAME	QTY
PREVIOUS	NEW		
87810-30340	87801-30030	Mirror Sub-Assy, Inner RR View	1
87810-30341			

### Required Tools & Equipment

SPECIAL SERVICE TOOLS (SST)	PART NUMBER	QTY
Plastic Pry Tool Kit*	<a href="#">00002-06020-02</a>	1

\* Essential SST.

**NOTE**  
**Additional SSTs may be ordered by calling 1-800-933-8335.**

## Rear View Mirror Discoloration

### Repair Procedure

1. Remove the inner rear view mirror.

Refer to the Technical Information System (TIS), applicable model and model year Repair Manual:

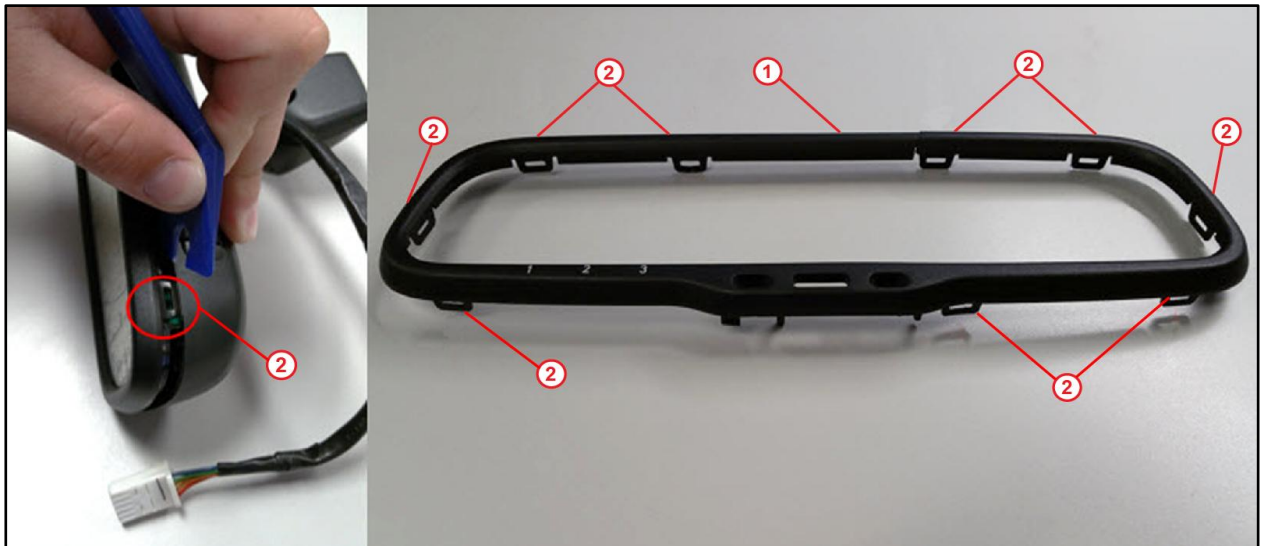
- [2006](#) GS 300:  
*Vehicle Interior – Mirror – “Mirror: Inner Rear View Mirror: Removal”*
- [2007](#) / [2008](#) / [2009](#) GS 350:  
*Vehicle Interior – Mirror – “Mirror: Inner Rear View Mirror: Removal”*
- [2006](#) / [2007](#) GS 430:  
*Vehicle Interior – Mirror – “Mirror: Inner Rear View Mirror: Removal”*
- [2007](#) / [2008](#) / [2009](#) GS 450h:  
*Vehicle Interior – Mirror – “Mirror: Inner Rear View Mirror: Removal”*
- [2008](#) / [2009](#) GS 460:  
*Vehicle Interior – Mirror – “Mirror: Inner Rear View Mirror: Removal”*

2. Use a small trim removal tool to separate the 9 frame clips that hold the glass and “AUTO” button in place.

**NOTICE**

Remove ANY static before performing this procedure to avoid damaging circuit board components.

Figure 2.



<b>1</b>	<b>Frame</b>
----------	--------------

<b>2</b>	<b>Frame Clip</b>
----------	-------------------

## Rear View Mirror Discoloration

### Repair Procedure (Continued)

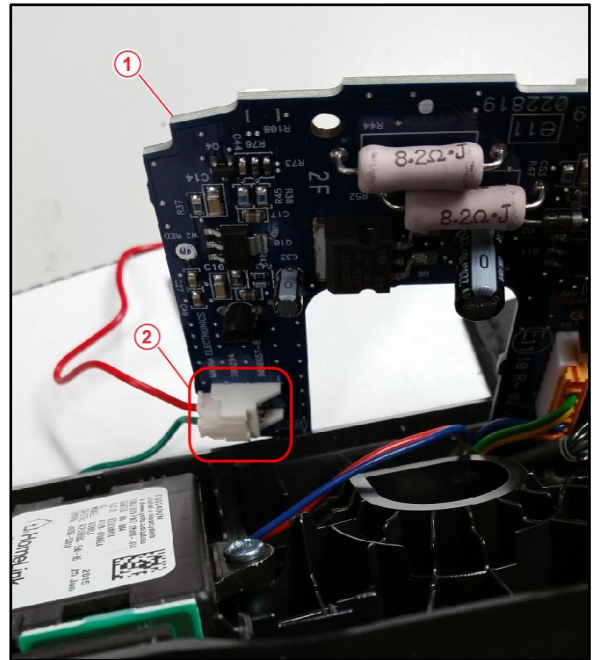
3. Remove the "AUTO" button and set aside. This part will be reused.
4. Discard old frame.

**Figure 3.**



5. Remove and place distorted mirror glass face down on the work bench. Carefully pull away the circuit board from the mirror assembly to access the 2 wire connector on the back of the circuit board.
6. Disconnect the connector and discard distorted mirror glass.

**Figure 4.**



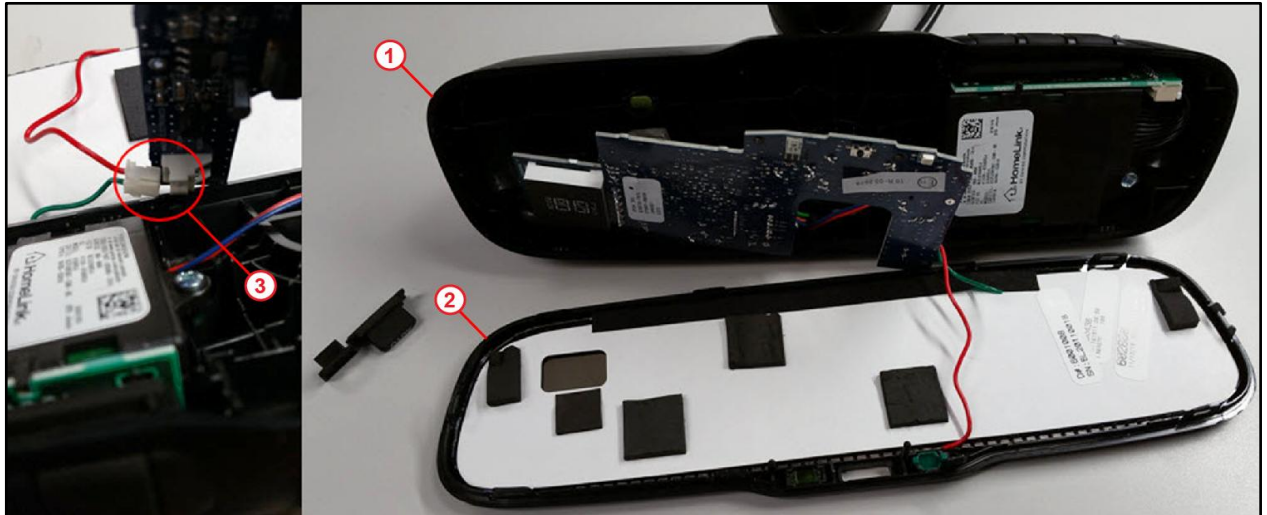
<b>1</b>	<b>Circuit Board</b>
<b>2</b>	<b>2 Wire Connector</b>

## Rear View Mirror Discoloration

### Repair Procedure (Continued)

- Place NEW mirror glass face down in NEW frame on work bench. Carefully pull circuit board away from the mirror assembly.

**Figure 5.**



<b>1</b>	<b>Mirror Assembly</b>
<b>2</b>	<b>NEW Frame with NEW Glass</b>

<b>3</b>	<b>2 Wire Connector</b>
----------	-------------------------

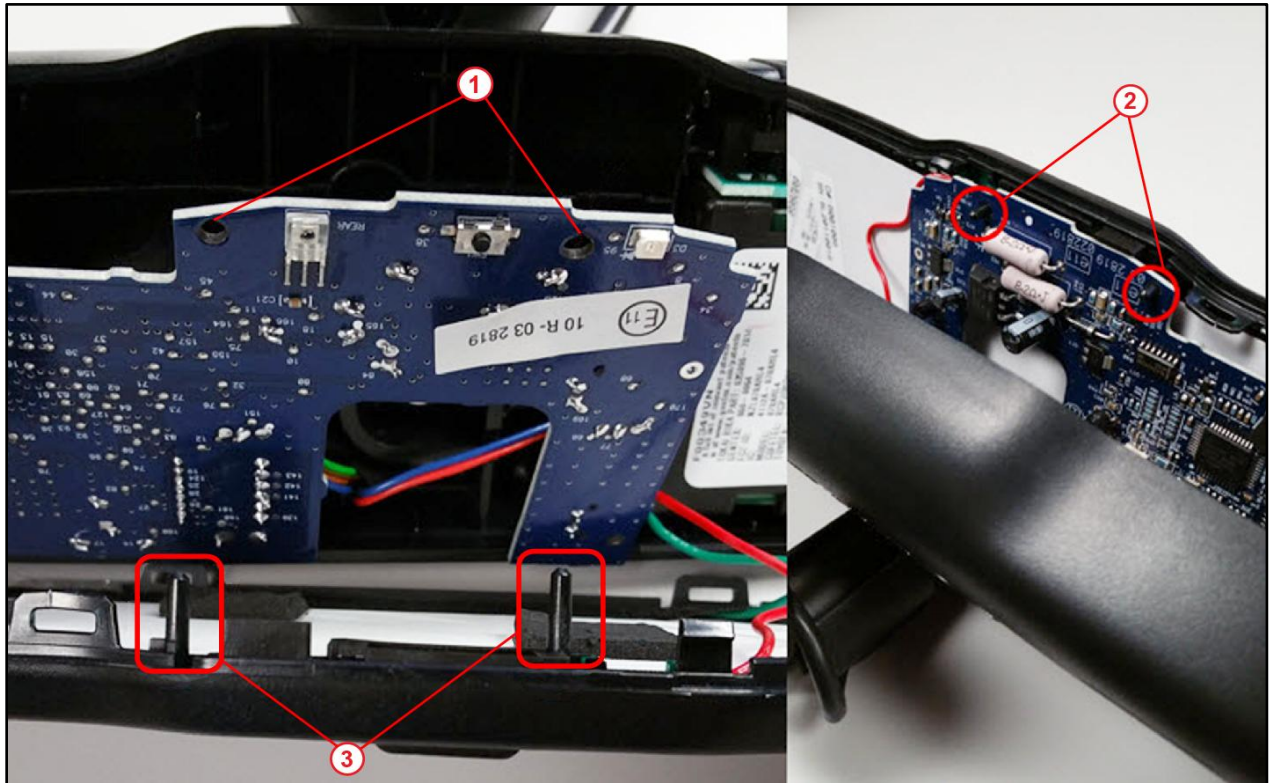
- Reconnect the mirror glass connector on the back side of the circuit board.
- Set the "AUTO" button into the NEW frame.

# Rear View Mirror Discoloration

## Repair Procedure (Continued)

10. Line up the alignment pins on the NEW frame with the alignment holes in the circuit board.

Figure 6.



1	Alignment Holes on Circuit Board
2	Circuit Board Mounted on Alignment Pins

3	Alignment Pins
---	----------------

11. Carefully snap in the 9 clips around the edge of the frame.

Figure 7.



## Rear View Mirror Discoloration

---

### Repair Procedure (Continued)

12. Reinstall the inner rear view mirror.

Refer to TIS, applicable model and model year Repair Manual:

- [2006](#) GS 300:  
*Vehicle Interior – Mirror – “Mirror: Inner Rear View Mirror: Installation”*
- [2007](#) / [2008](#) / [2009](#) GS 350:  
*Vehicle Interior – Mirror – “Mirror: Inner Rear View Mirror: Installation”*
- [2006](#) / [2007](#) GS 430:  
*Vehicle Interior – Mirror – “Mirror: Inner Rear View Mirror: Installation”*
- [2007](#) / [2008](#) / [2009](#) GS 450h:  
*Vehicle Interior – Mirror – “Mirror: Inner Rear View Mirror: Installation”*
- [2008](#) / [2009](#) GS 460:  
*Vehicle Interior – Mirror – “Mirror: Inner Rear View Mirror: Installation”*

13. Calibrate compass.

Refer to TIS, applicable model and model year Repair Manual.

- [2006](#) GS 300:  
*Vehicle Interior – Mirror – “Mirror: Inner Rear View Mirror: Calibration”*
- [2007](#) / [2008](#) / [2009](#) GS 350:  
*Vehicle Interior – Mirror – “Mirror: Inner Rear View Mirror: Calibration”*
- [2006](#) / [2007](#) GS 430:  
*Vehicle Interior – Mirror – “Mirror: Inner Rear View Mirror: Calibration”*
- [2007](#) / [2008](#) / [2009](#) GS 450h:  
*Vehicle Interior – Mirror – “Mirror: Inner Rear View Mirror: Calibration”*
- [2008](#) / [2009](#) GS 460:  
*Vehicle Interior – Mirror – “Mirror: Inner Rear View Mirror: Calibration”*

14. Confirm inner rear view mirror functions properly.