



National Kaohsiung
CENTER FOR THE ARTS

WEI WU YINGGE

衛武營 國家藝術文化中心

國家表演藝術中心 National Performing Arts Center

RECITAL HALL

Technical Information

Table of Contents

0 General Information	1
0-1 National Kaohsiung Center for the Arts (WEIWUYING)	1
0-2 Recital Hall	1
0-3 Traffic Information	2
0-4 Contact Information	2
0-5 Stage door	2
0-6 Auditorium / Seating	3
0-7 Plan	5
0-8 Section	6
1 Stage	7
1-1 Stage	7
1-2 Hoisting	8
2 Lighting	9
2-1 Lighting instrument	9
2-2 Accessories	10
2-3 Lighting Plan	11
2-4 Lighting Circuit	13
2-5 Portable Lift	15
2-6 Additional Power Supply	15
2-7 Working Light / House Light / Blackout	15
3 Audio/Video Systems	16
3-1 Audio Facilities	16
3-2 Control Room	16
3-3 Stage Manager' s Desk	16
3-4 Microphone	16
3-5 Communications	17
3-6 Locations of Communications	17
3-7 Stage Cameras and Video Surveillance Systems	17
3-8 Paging Systems	17
4 Backstage Facilities	18
4-1 Dressing Rooms and Green Rooms	18
4-2 Orchestra Facilities	18
4-3 Pianos (shared between four <i>venues</i>)	19
4-4 Loading Dock	20
4-5 Other Facilities	22

Last updated:2021/05/13

0 General Information

0-1 National Kaohsiung Center for the Arts (WEIWUYING)

CENTER FOR THE ARTS, ARTS FOR THE PEOPLE, National Kaohsiung Center for the Arts will become one of the important theatre complexes of the international art field. It includes four performance blocks, the 2,236 seat Opera House, the 1981 seat Concert Hall, the 1210 seat Play House and the 434 seat Recital Hall.



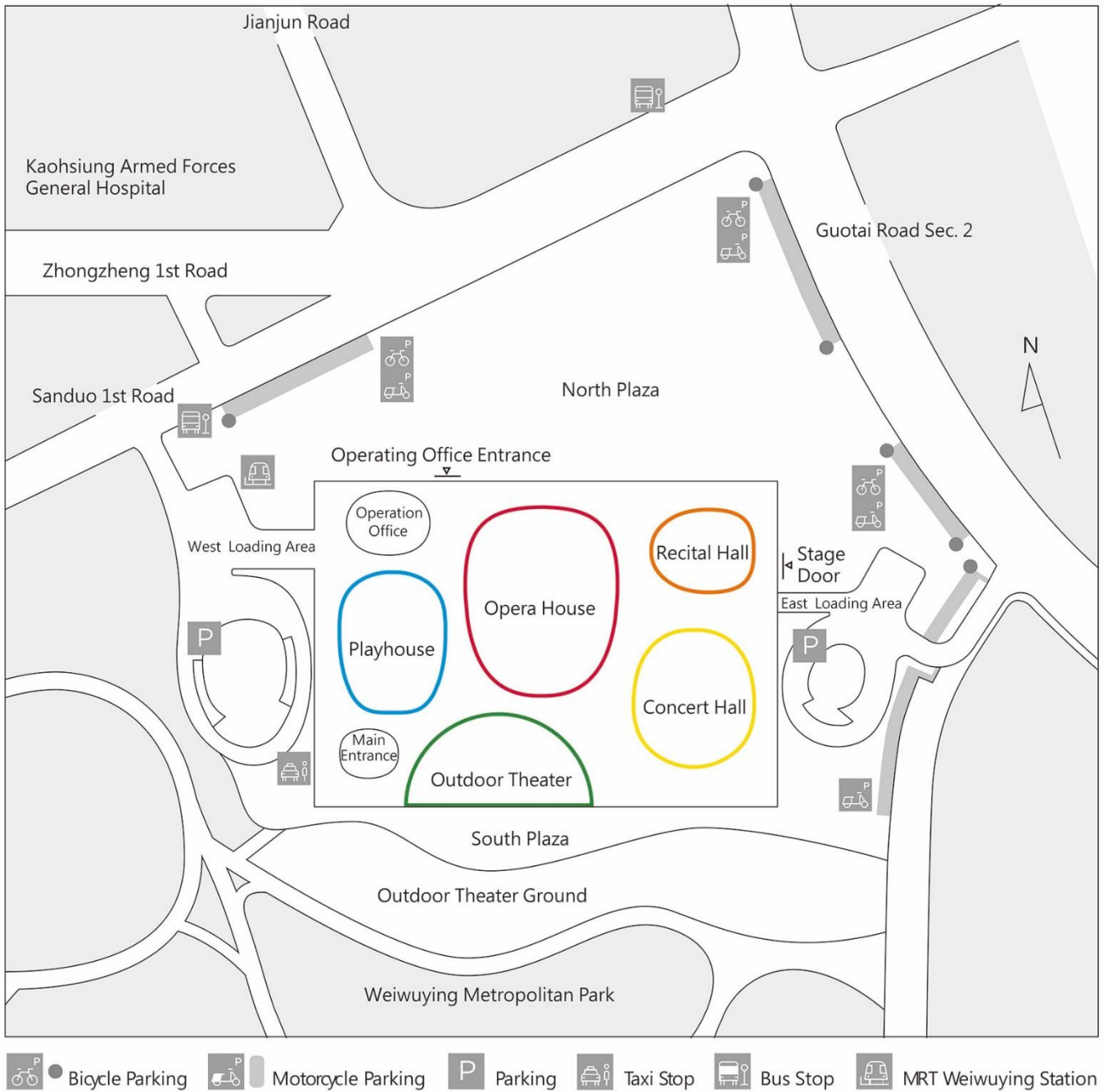
0-2 Recital Hall

The Recital Hall is mainly for chamber music, solo recitals, or other smaller performances. The sound-absorption can be adjusted to meet the needs with diverse types of performances, providing the most optimal acoustic effect.

The design is a variation of the traditional shoebox style, where a short partition wall is erected along the center line of the seating area to convert the Recital Hall into a vibrantly asymmetrical shoebox, while also providing reflection of direct sounds for the front seating area. To meet the needs of various types of performances, the sound-absorption value can be adjusted accordingly in the Recital Hall. An entire circle of sound-absorbing drapery behind the perforated wooden panels surrounds the upper half of the Recital Hall. The size of the drapery used is determined by performance genres so as to offer a superb acoustic effect.



0-3 Traffic Information



0-4 Contact Information

National Kaohsiung Center for the Arts (Weiwuying)

No.1, Sanduo 1st Rd., Fengshan Dist., Kaohsiung City 83075, Taiwan

+886 7-262-6666

service@npac-weiwuying.org

0-5 Stage door

Ground floor access is from the north and east side of building. Enter from Operating office entrance on Sanduo 1st Road or Stage Door on Guotai Road.

Basement Level 1 access is from Sanduo 1st Road entrance for Opera House and Playhouse, Guotai Road entrance for Concert Hall and Recital Hall.

Working pass will be required for entry.

0-6 Auditorium / Seating

2021/05/13

Seating Capacity : 434 seats

■ House Seats : 407 seats (1F/207 Seats - 2F/200 Seats)

♿ Wheelchairs Seats : 6 seats

■ Companion Seats : 6 seats

■ Control Area Seats : 8 seats

■ Reserved Seats for Tech Table : 4 seats

■ Reserved Seats for FOH : 3 seats

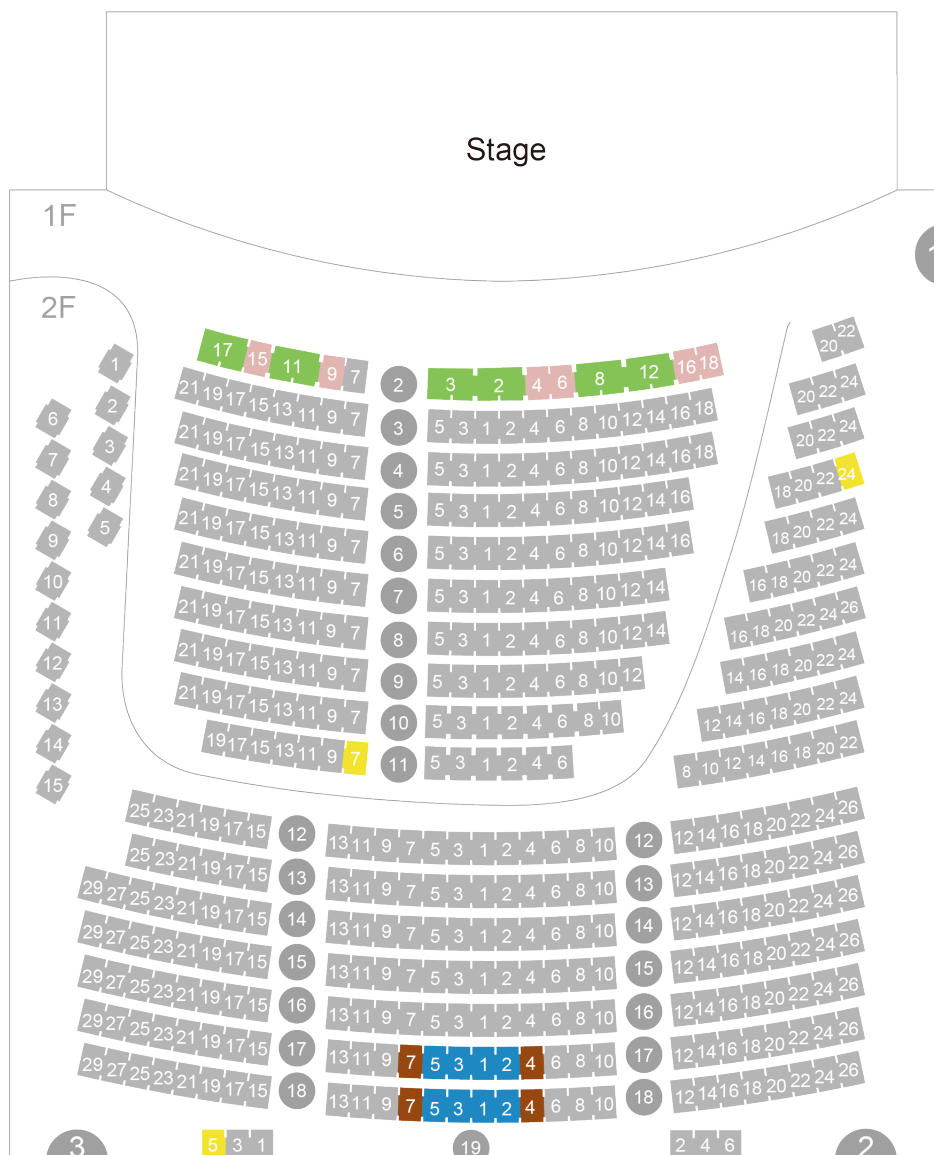


Figure 0.1- Recital Hall Seating plan

Set Up Equipment Recommended Seat

Set Up Equipment Seat	Reserved Seat	Notes
1st Floor 11 Row Seat 1	1st Floor 10 Row Seat 1 1st Floor 11 Row Seat 2、3	For Photo Shooting & Video Shooting
2nd Floor 18 Row Seat 1	2nd Floor 17 Row Seat 1 2nd Floor 18 Row Seat 2、3	For Photo Shooting & Video Shooting 18 rows of rear walkways need to be kept open
V Row Seat 1	V Row Seat 2、3、4、5、6、7	For Photo Shooting & Video Shooting
Set Up Control Area Seat	Reserved Seat	Notes
1st Floor 10 Row Seat 1、2、3、5 1st Floor 11 Row Seat 1、2、3、5		18 rows of rear walkways need to be kept open
2nd Floor 17 Row Seat 1、2、3、5 2nd Floor 18 Row Seat 1、2、3、5		

0-7 Plan

表演廳一樓化妝室位置圖

Recital Hall 1F Dressing Room Map



- | | |
|--|--|
| <ul style="list-style-type: none"> 1204 化妝室 - 01
Dressing Room - 01 1206 化妝室 - 02
Dressing Room - 02 1208 化妝室 - 03
Dressing Room - 03 1211 化妝室 - 04
Dressing Room - 04 | <ul style="list-style-type: none"> 1197 團隊辦公室 - 01
Company Office - 01 1198 團隊辦公室 - 02
Company Office - 02 |
|--|--|

 出入口 Entrance	 飲水機 Water Dispenser	 醫護室 Infirmary	 無障礙廁所 Accessible Restroom	 樓梯 / 電梯 Stairs / Elevator	 現在位置 You Are Here
---	--	--	--	--	--

Figure 0.2- Recital Hall Plan

0-8 Section

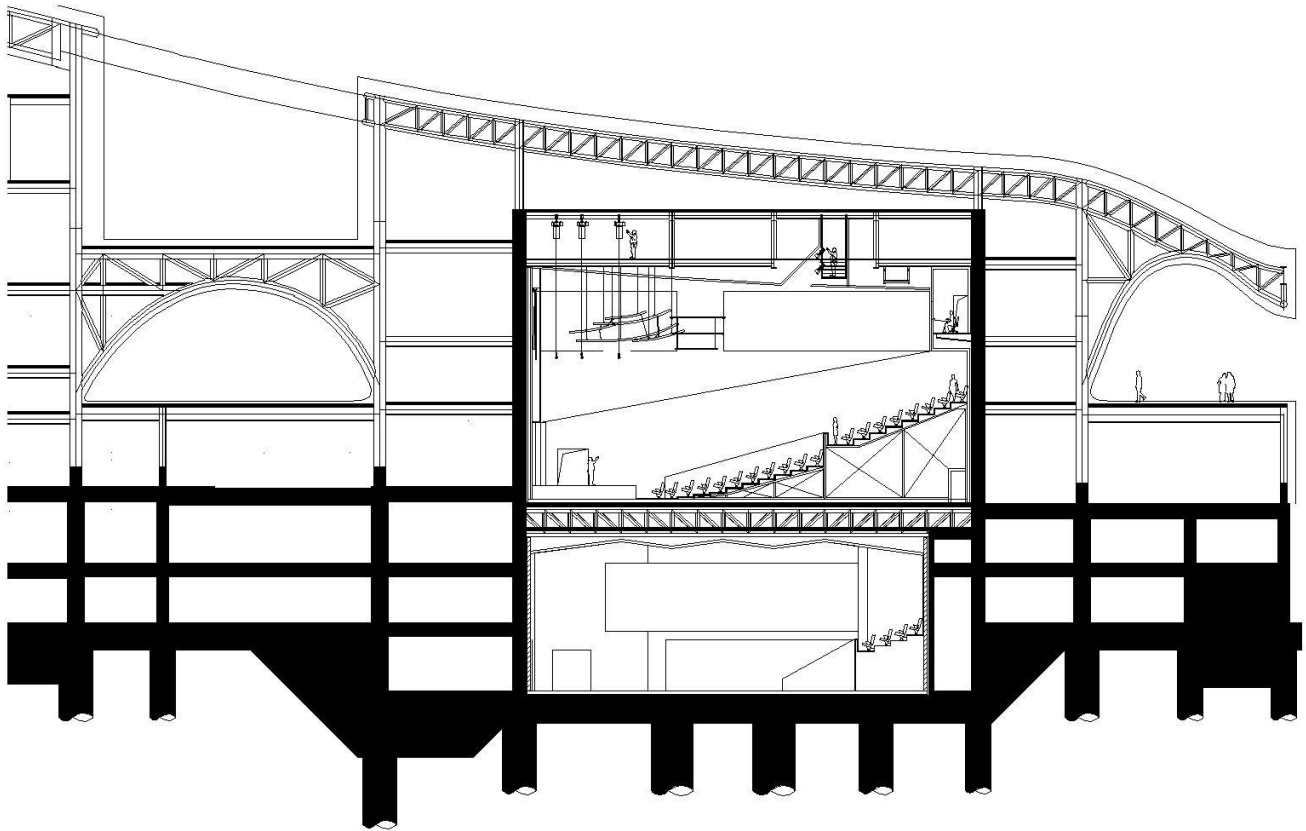


Figure 0.3- Recital Hall Section

1 Stage

1-1 Stage

15.6m (Width) x 5.4m (depth) x 0.7m (height from auditorium floor to stage level)

Sound reflect absorbing drape

Fixed acoustic panel, 8.5m above the stage level

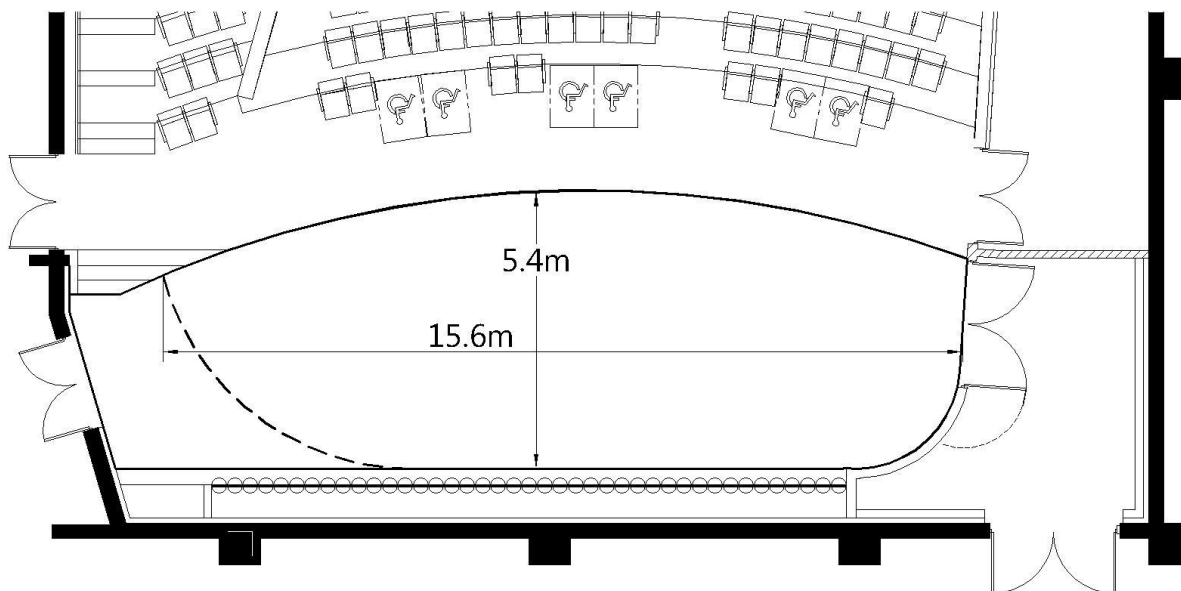


Figure 1.1-Stage Plan

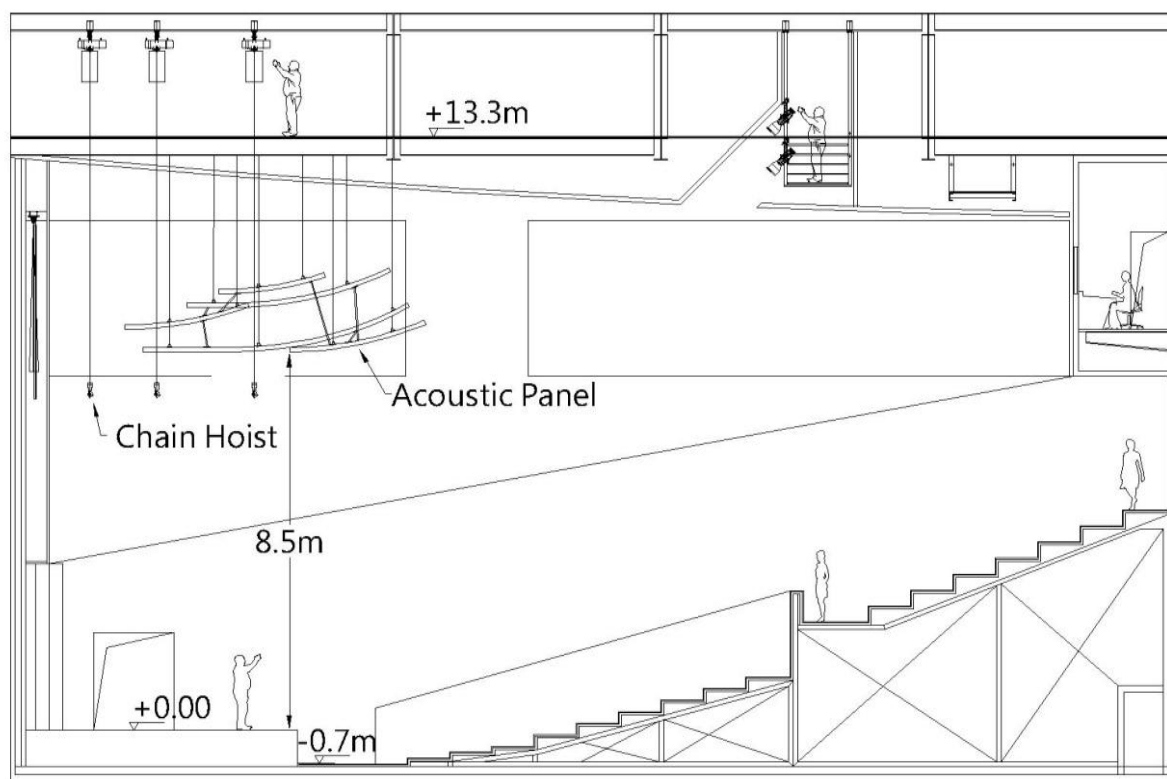


Figure 1.2- Acoustic Panel Plan

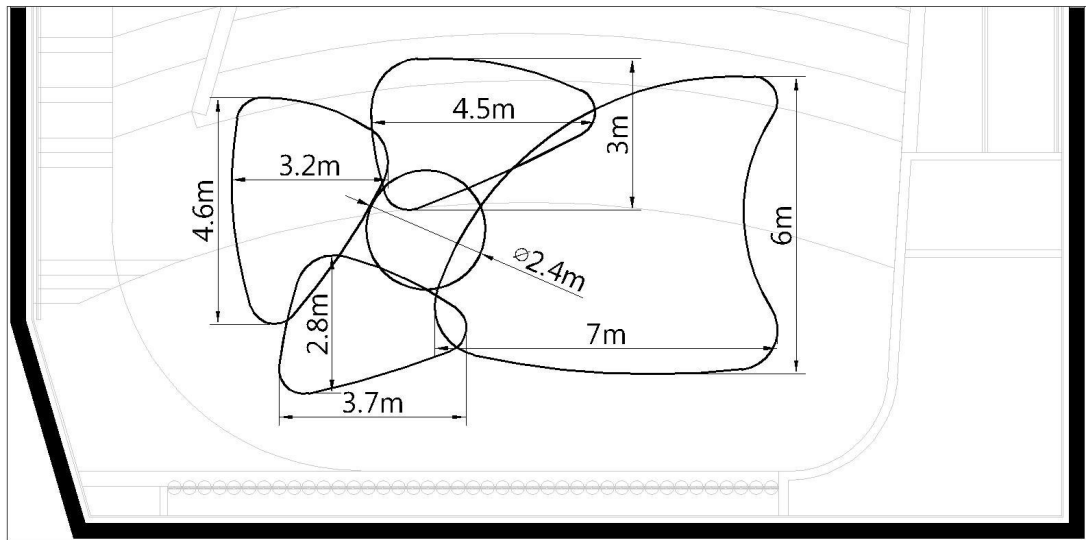


Figure 1.3- Acoustic Panel Plan

1-2 Hoisting

1-2-1 Chain hoist (point load 1000kg, fixed speed: 9.6m/min)

Above Stage, 9 sets, operation length 15m, Movecat PLUS lite chain hoists.

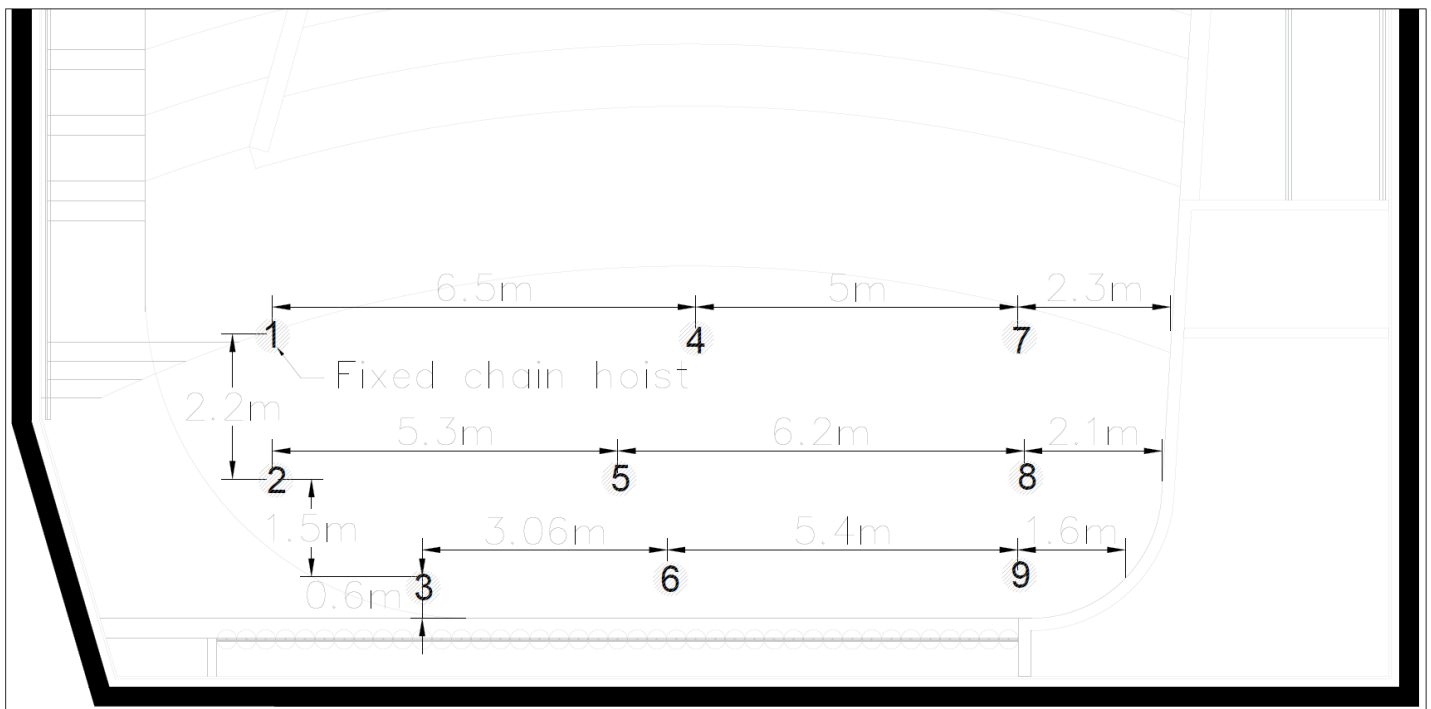


Figure 1.4 - Stage Hoisting plan

1-2-2 Control System

The chain hoists control system is located in the grid area and can be connected to both side of stage, through Movecat MRC ID remote controller operates in the stage area.

1-2-3 Trusses

Item	Quantity	Dimension	Paid item
EUROTRUSS HD33 (Triangle)	3	0.29m(equilateral triangle length) x 0.25m(Height) x 4 m(length)	*
	19	0.29m(equilateral triangle length) x 0.25m(Height) x 3 m(length)	*

Items with * mark are paid items. Please refer to the rate tables of National Kaohsiung Center for the Arts.

2 Lighting



2-1 Lighting instrument

Important : All lighting data is on network system

Item	Position	Model	Specifications	Quantity	Frame size	Note	Paid Item	
Lighting Console	Control Booth	GrandMA 2 Ultra Light		1				
Dimmer System	Dimmer Room	State Automation Solution	220V 3kW/Circuit	120ch				
Ellipsoidal Reflector Spotlight	Catwalk	Selecon SPX 14°	220V/800W	16	15.8x15.8cm			
		Selecon SPX 15°-35°		8				
	SR Lighting BOX	Selecon SPX 14°	220V/800W	4	15.8x15.8cm			
		Selecon SPX 19°		4				
	SL Lighting BOX	Selecon SPX 14°	220V/800W	4	15.8x15.8cm			
		Selecon SPX 19°		4				
	Stage Top Light	ETC Source Four PAR MCM	220V/575W	10				
	2KW Fresnel Spotlight 8"	Storage	Selecon SPX 14°	220V/800W	10	15.8x15.8cm		
			Selecon SPX 19°		30			
			Selecon SPX 15°-35°		10			
ETC Source Four 50°			220V/750W	10	15.9x15.9cm			
Parabolic Aluminized Reflector Spotlight		Selecon Arena Theatre 8" Fresnel 7°-60°	220V/2kW	20	24.5x24.5cm			
		PAR 64-Kupo PL-64LB	220V/1kW	30	25.4x25.4cm	Lamp : W x 8 、 M x 14 、 N x 8		
Long Throw Follow Spot	Catwalk	Lycian M2 Model 2040 1.2	220V/1.2kW	1				
Strip Light		Selecon PL TR2 RGB 18 Striplights	110-220V/ 2.5A-1.3A 280W	7		If Strip manual needed, please contact TC Team.	*	
Follow Spot Operator			Operator/ 4 hour	1			*	

*Items with * mark are paid items. Please refer to the rate tables of National Kaohsiung Center for the Arts.*

2-2 Accessories

Item	Specifications	Size	Quantity
Barn Door	2kW Fresnel		10
Iris	For Selecon Ellipsoidal Reflector Spotlight		10
Gobo Holder	For Selecon Ellipsoidal Reflector Spotlight	B Size	20
	For ETC Source Four Ellipsoidal Reflector Spotlight	A Size	10
Power Distribution Box	8CIR CEE Form Female Plug 		9
Multi-Cable	16pin Multi-Cable Harting Connector	5m	4
		10m	2
		15m	2
Ex-Cable CEE16A	Ex-Cable CEE16A	1.5m	30
		2m	29
		3m	20
		5m	15
		10m	9
		15m	10
Adapter Cable	CEE 16A(M) To Stage-Pin(F)		10
MA2 2 Port Node			1

2-3 Lighting Plan

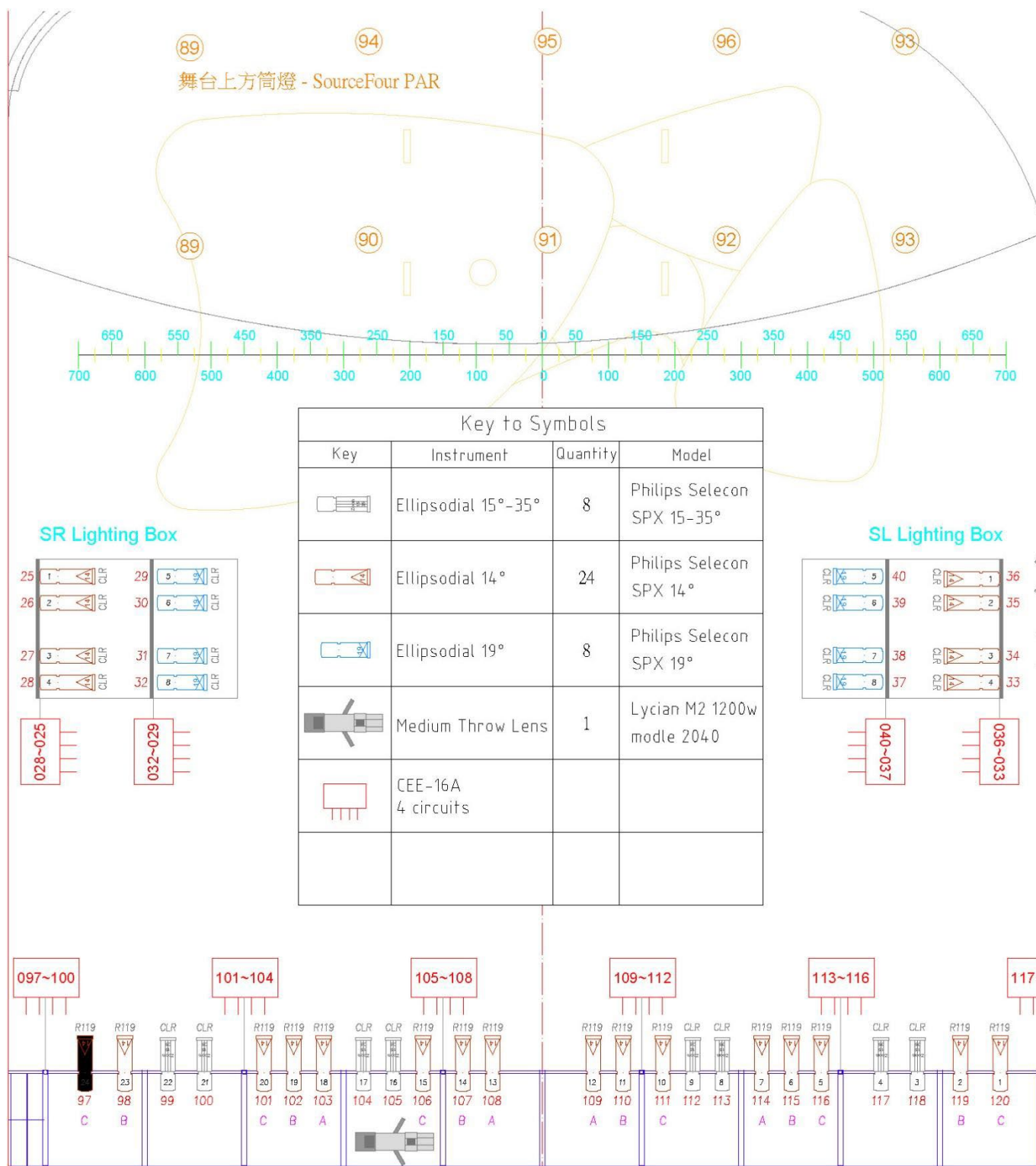


Figure 2.1-Lighting Plan

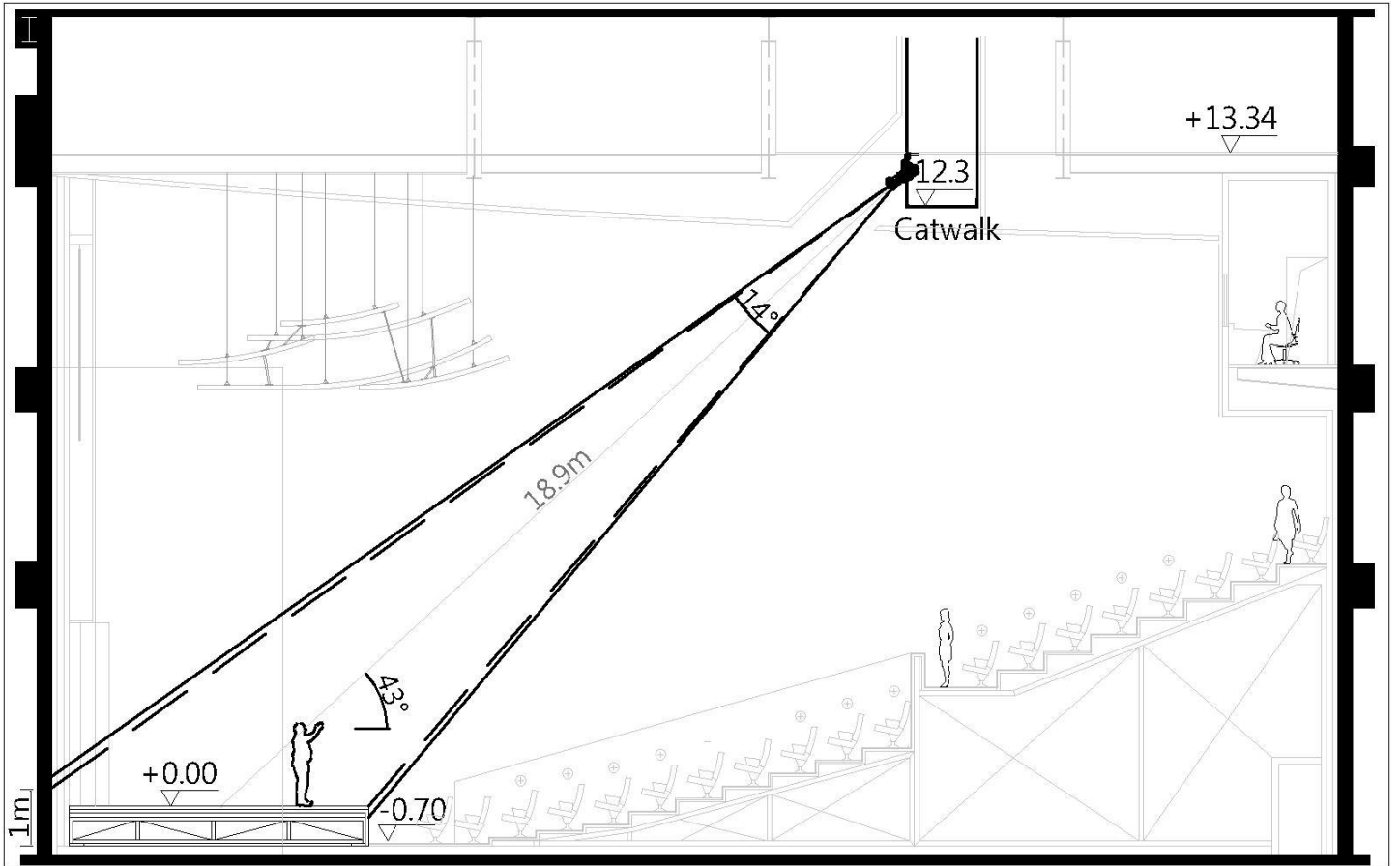


Figure 2.2- Lighting Section

2-4 Lighting Circuit

2-4-1 Stage area

Area and Position	Dimmer Circuit No.	Load	Network Circuit No.
Stage/L	001 ~ 008	3kW	LN01~LN02
Stage/R	009 ~ 016	3kW	LN03~LN04
Up Stage	017 ~ 024	3kW	LN05~LN06
Side Stage/L			LN07~LN10
Control Booth			LN11~LN18

KEY	<input type="checkbox"/>	Circuit Box
	<input type="checkbox"/>	Net Port

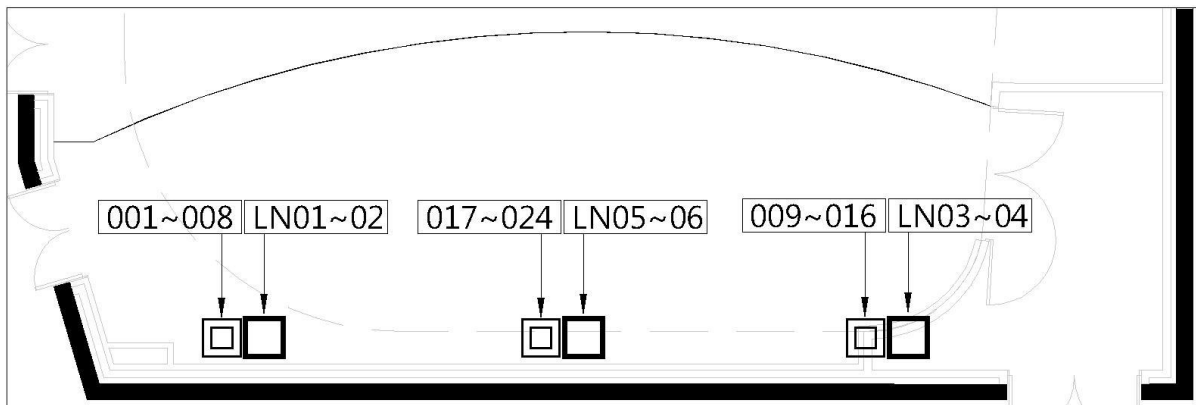


Figure 2.3.1- Stage Area Lighting Circuit Layout

2-4-2 Front of House

Area and Position	Dimmer Circuit No.	Load	Network Circuit No.
Lighting Box/R	025 ~ 028	3kW	LN19~LN20
	029 ~ 032		
Lighting Box/L	033 ~ 036	3kW	LN21~LN22
	037 ~ 040		
Stage Grid Area	041 ~ 048	3kW	LN23~LN24
	049 ~ 056	3kW	LN25~LN26
	057 ~ 064		
	065 ~ 072	3kW	LN27~LN28
	073 ~ 080	3kW	LN29~LN30
	081 ~ 088	3kW	LN31~LN32
Catwalk	089 ~ 096 (For Stage Top Light)	3kW	LN33~LN34
	097 ~ 100	3kW	LN35~LN36
	101 ~ 104	3kW	
	105 ~ 108	3kW	
	109 ~ 112	3kW	
	113 ~ 116	3kW	
117 ~ 120	3kW		

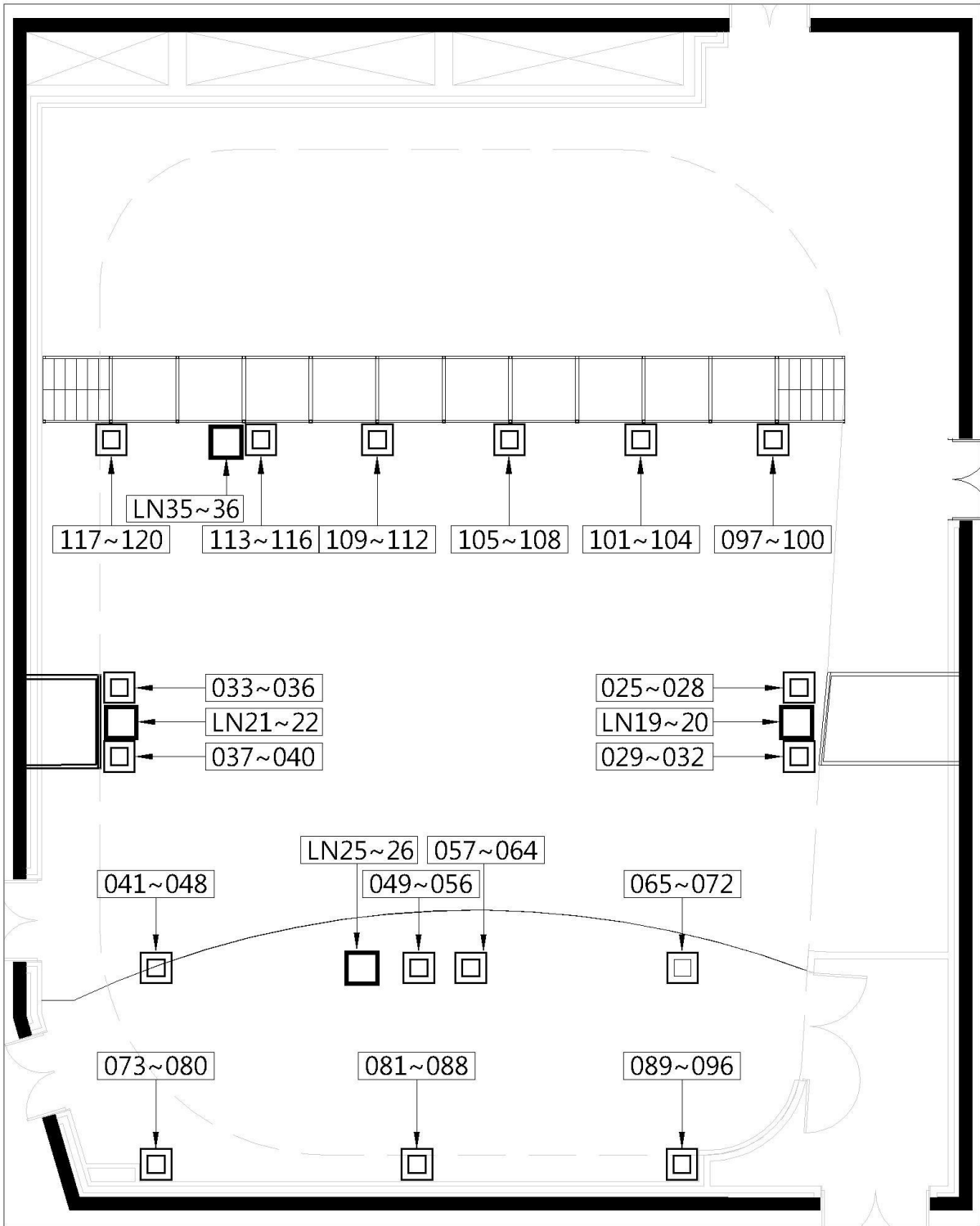


Figure 2.3.2- Grid Area-Lighting Circuit Layout

2-5 Portable Lift

Brand and Model: Snorkel UL-25 (AC Power Supply)
 Maximum height: 7.6m
 Maximum weight: 159kg
 Quantity: 1

2-6 Additional Power Supply

Function	Position	Specifications	Quantity
Stage	Up Stage Left / Stage Right Waiting Area	3 φ 4W+G 380V/220V/60Hz (CEE 125A/3P+N+E)	1 / 1
Light		3 φ 4W+G 208V/120V/60Hz (Camlock 250A)	1 / 1
Sound		3 φ 4W+G 208V/120V/60Hz (Camlock 50A)	1 / 1

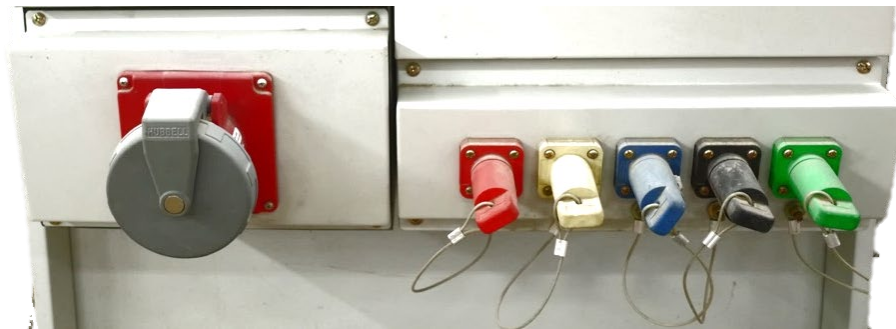


Figure 2.4 - Additional Power Supply

2-7 Working Light / House Light / Blackout

Working Light

Work lights provided white and blue light mode, and the control switch is located on the stage manager' s Desk.
 Lighting area: Side stage entrance, Lighting Box, Grid area and Cat walk.

House Light

Auditorium lights consists houselights and step lights, which can be separately controlled and dimmed. The control panel is located on the stage manager' s Desk and lighting control room.

Blackout

In accordance with government Fire Services Act, there are many of emergency lights in the venue. We cannot extinguish the emergency lighting for any performance, there will be the minimal lighting levels in the auditorium and backstage areas.

3 Audio/Video Systems

3-1 Audio Facilities

Item	Quantity	Brand-and Model	Paid Item
Digital speaker	4	Renkus-Heinz IC 8R II	
12" Active stage monitor speakers	4	Renkus-Heinz PN121M/12	
6.5" Active stage monitor speakers	4	Renkus-Heinz PN61	*
2CH Equalizer	2	XTA GQ600	*
AD/DA, I/O Digital I/O Fiber Module	2	Studer D21M	

Items with * mark are paid items. Please refer to the rate tables of National Kaohsiung Center for the Arts.

3-2 Control Room

Item	Quantity	Brand-and Model	Paid Item
Digital mixer	1	Studer Vista 5 M3/32	
Digital I/O Fiber Module	1	Studer D21m	
CD player	1	Tascam CD-500B	*
CD-R recorder / player	1	Tascam CD-RW 901 MKII	*
Multi-circuit recording equipment	1	Joeco BBR1D+2.5" USB 1TB HD	*
Dual track Hard disk recorder	1	Tascam DA 3000	*
Active monitor speakers	2	Dynaudio BM12 MkIII	

Items with * mark are paid items. Please refer to the rate tables of National Kaohsiung Center for the Arts.

3-3 Stage Manager' s Desk

The stage manager' s Desk is equipped with a near-field monitor (Dynaudio BM compact MkIII), screen monitor and intercom equipments.

3-4 Microphone

Item	Quantity	Brand-and Model.	Paid Item
Dynamic microphone	2	Audio Technica AE4100	*
Dynamic microphone	4	Audio Technica ATM250	*
Condenser microphone	2	Audio Technica AE5400	*
Cardioid Condenser microphone	4	Audio Technica AT4021	*
Cardioid Condenser Boundary Microphone	2	Audio Technica U851R	*
Stage reception Microphone	2	DPA 4017B / DPA UA0836 Holder	
Hypercardioid Condenser microphone	4	AKG CK-63-ULS+C480B	*
Cardioid condenser microphone	4	AKG CK-61-ULS+C480B	*
Wireless microphone	2	Sennheiser SKM500G3+MME865	*
Mini wireless microphone	6	Sennheiser SK500G3+MKE2	*
Single channel wireless microphone receiver	8	Sennheiser EW500G3	
wireless microphone wave antenna	2	Sennheiser AD3700	
wave antenna distributor	3	Sennheiser ASA1	

Items with * mark are paid items. Please refer to the rate tables of National Kaohsiung Center for the Arts.

3-5 Communications

Item	Quantity	Brand-and Model	Paid Item
Intercom host machine	1	Clear-Com Eclipse HX-Delta	
System interface	1	Clear-Com Helixnet HMS-4	
Double circuit intercom	3	Clear-Com Helixnet HBP-2X	
Fixed intercom microphone/ speak	1	Clear-Com V12PDXY 110/340 Clear-Com V12PDDXY 110 / 340	
Single head receiver microphone	3	Clear-Com CC-300	
Double head receiver microphone	2	Clear-Com CC-400	
Telephone intercom	2	Clear-Com HS-6	
Digital Wireless Intercom set	2	1. Portable wireless sub-station / Clear-Com FS-BP 2. Single-ear headset / Clear-Com CC-300	*

Items with * mark are paid items. Please refer to the rate tables of National Kaohsiung Center for the Arts.

3-6 Locations of Communications

Item Number	Floor	Location
1	1F	stage right entrance
2		stage right entrance
3		FOH Auditorium chair below (Row1-3,11)
4		Loading Dock
5		Recording studio
6		Personal makeup room 1
7		Personal makeup room 2
8	2F	Control room
9		Control room
10	3F	Catwalk

3-7 Stage Cameras and Video Surveillance Systems

Stage monitors are installed in right and left wing stage entrance, first, second, and third floor lobby, master and secondary control room, dressing rooms and green rooms.

Item	Quantity	Brand-and Model	Paid Item
Camera(2/3 inch 3CCD)	1	Panasonic AW-HE870 Panasonic LZ20M85G	
Remote control	1	Panasonic AW-RP50	
Switcher	1	Panasonic AW-RP120	
Video recording	Show	Fixed camera for stage panoramic view recording, only suitable for archived copy.	

Items with * mark are paid items. Please refer to the rate tables of National Kaohsiung Center for the Arts.

3-8 Paging Systems

Backstage Paging Systems

There are four venues individually Backstage Paging Systems in National Kaohsiung Center for the Arts. For Recital Hall paging available to all dressing rooms, green rooms and passage, it can also available paging to separately 3 zones. The Paging and Program position is located on the stage manager' s console.

Zone 1 : 1203 Green Room 、 1204 Dressing Room-01 、 1206 Dressing Room-02 、 1208 Dressing Room-03 、 1211 Dressing Room-04

Zone 2 : Passage 1202

Zone 3 : 1197 Company office -01 、 1198 Company office -02

4 Backstage Facilities

4-1 Dressing Rooms and Green Rooms

All dressing rooms and green rooms are on the first floor.

No.	Room No.	Name	Capacity	Notes
1	1197	Company office 01	20	Includes table and chairs
2	1198	Company office 02	20	Includes table and chairs
3	1203	Green room	3	Includes dressing mirror, table and chairs.
4	1204	Dressing Room 01	2	Includes mirror, table and chairs, toilet and shower
5	1206	Dressing Room 02	3	Includes mirror, table and chairs, toilet and shower
6	1208	Dressing Room 03	13	Includes upright piano, mirror, table and chairs, toilet and shower
7	1211	Dressing Room 04	13	Includes mirror, table and chairs, toilet and shower

4-2 Orchestra Facilities

No.	Item	Quantity		Notes
1	Chair	150	*	
2	Ensemble stool	18	*	
3	Conductor' s chair	1	*	
4	Music stand	140	*	
5	Music stand Tray	10	*	
6	Music stand light	60	*	White light, two brightness mode
7	Conductor' s podium	1	*	WENGER Double podium / Base podium:1.09 x 0.97 x 0.15 m Double podium / Upper podium:0.81 x 0.97 x 0.15 m Single podium :1.2 x 1.15 x 0.25 m
8	Conductor' s stand	1	*	
9	Percussion table stand	8	*	
10	Endpin stopper	20	*	
11	Platform	30	*	Large L183cm*W138cm*H22cm*10 Medium L183cm*W92cm*H22cm*10 Small L183cm*W46cm*H22cm*10
12	Acoustic shield	5	*	
13	Resonance Podium for Violin 100*60*15(cm)	8	*	
	Resonance Podium for Violin 100*60*20(cm)	8	*	
	Resonance Podium for Cello 130*60*15(cm)	4	*	
	Resonance Podium for Cello 130*60*20(cm)	4	*	
	Solo Musician' s Podium 175*100*20(cm)	1	*	
	Solo Musician' s Podium 115*110*15(cm)	1	*	

Items with * mark are shared with Concert Hall.

4-3 Pianos (shared between four venues)

No.	Item	Brand	Model Number	Quantity	Notes
1	Model-D Concert grand	Steinway & Sons	D-274	3	*
2	Concert grand	FAZIOLI	F308	1	*
3	Grand Piano	YAMAHA	C7XPE	1	*
4	Grand Piano	KAWAI	SK-6L	1	*
5	Celesta	Schiendmayer	5 ½ Octave Studio model	1	*
6	Harpsichord	J.C.NEUPERT	Hensch	1	*
7	Upright Piano	YAMAHA	U3	1	*

*Items with * mark are paid items. Please refer to the rate tables of National Kaohsiung Center for the Arts.*

※Pianos shared with four venues, booking in advance is required.

The piano should be tuned by WEIWUYING' s contracted piano technician. Piano hire fees do not include tuning cost.

4-4 Loading Dock

4-4-1 East Dock

Recital Hall and Concert Hall use the East Dock for loading and unloading. The dock is equipped with two hydraulic dock leveler that can be adjusted according to the required height.

Dock Dimension

Dimension: 8.7m

Clearance: 4.3m Height from floor to top

3.8m height from dock to grid area (Truck height limit 4.2m)

Height from dock to floor: 0.98m

Stage entrance: 1.95m (width) x 2.2m (height)

4-4-2 Handling equipment

1.5mt Stand-Up Automatic Electric Forklift x1

3mt Manual Hydraulic Pallet Jack x1

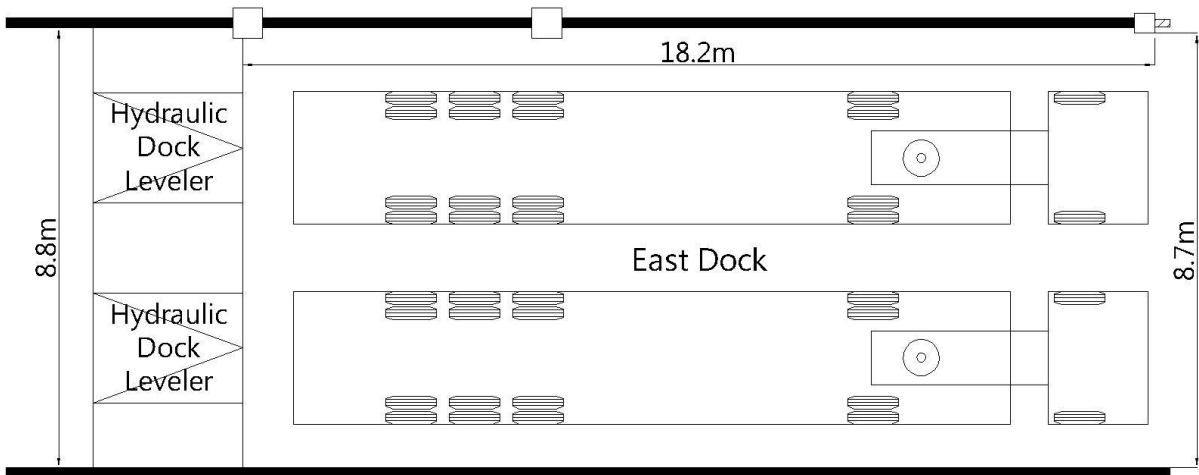


Figure 4.1- East Loading Dock Plan

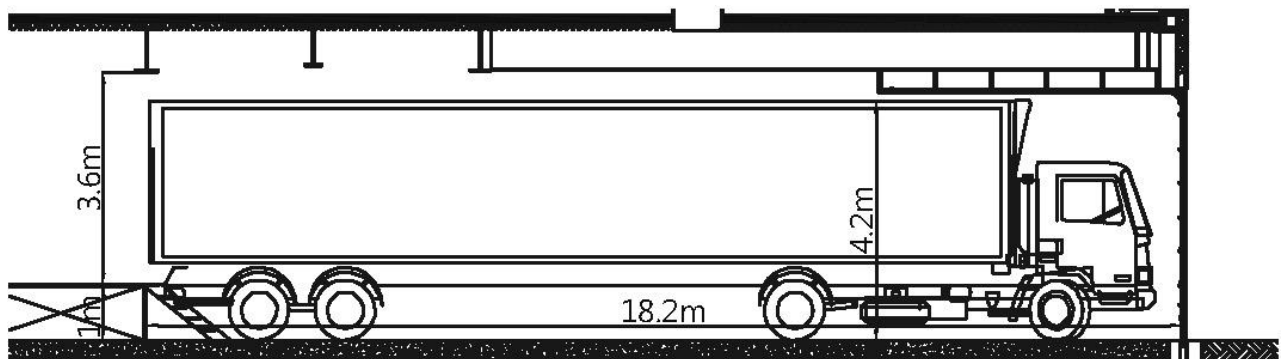


Figure 4.2- East Loading Dock Section

4-4-3 Loading Flow

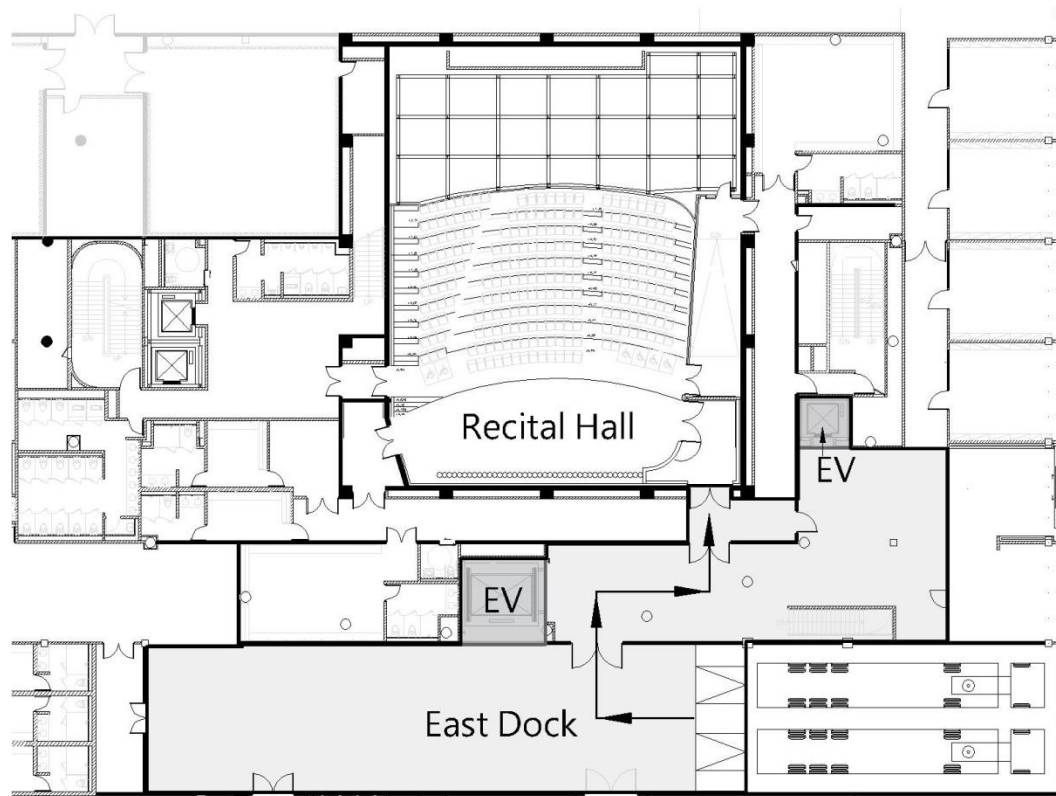


Figure 4.3 - Loading Flow

4-4-4 Hydraulic Dock Leveler

Capacity: 22.6mt

Area: 198cm (width) x 221.9cm (length)

Elevation: +/- 30.5cm

Quantity: 2 on east dock

4-5 Other Facilities

4-5-1 Rehearsal Rooms

There is no rehearsal studio dedicated to the Playhouse. Additional rehearsal space is limited across the WeiWuYing. There are 13 different function and accommodated rehearsal studios, these available for hire between four major theatres. Requests should be discussed well in advance to determine availability. The hire fees please refer to the rate tables of National Kaohsiung Center for the Arts.

Room No.	Name	Dimension (Length x Width x Height / m)	Notes
1171	Rehearsal Studio-01 (Opera House rehearsal room)	16.4x12.3x10.4	1. Grand Piano ,Wooden floor covered black color dance floor , Wall mount glassless mirrors x 1 side 2. Capacity : 110
		Subsidiary space 6.9x5.3x3	
1182	Rehearsal Studio-02	11.4x10.8x3.8	1. Wooden floor covered gray color dance floor , Sound absorption wall x 2 side ,Wall mount glassless mirrors x 2 side 2. Capacity : 50
1184	Rehearsal Studio-03	11.1x10.8x4	1. Grand Piano ,Wooden floor covered gray color dance floor , Sound absorption wall x 2 side ,Wall mount glassless mirrors x 2 side 2. Capacity : 50
1186	Rehearsal Studio-04	17.5x12.1x3.9	1. Grand Piano ,Wooden floor ,black color dance floor , Wall mount glassless mirrors x 2 side ,Fixed Ballet barre on the single sided wall mirror x 2 2. Capacity : 110
		Subsidiary space 6.6x8.8 x3	Rehearsal Studio-04 use only Green Room-01(With dressing room)
1192	Rehearsal Studio-05	19.3x12.2x3.9	1. Grand Piano ,Wooden floor , black color dance floor , Wall mount glassless mirrors x 2 side ,Fixed Ballet barre on the single sided wall mirror x 2 2. Capacity : 110
		Subsidiary space 6.6x8.8 x3	Rehearsal Studio-05 use only Green Room-02(With dressing room)
B1111	Rehearsal Studio-06	8x7.4x2.3	1. Upright piano ,Chair , Music stand ,Wooden floor , Sound absorption wall 2. Capacity : 25
B1112	Rehearsal Studio-07	5.2x4.4x2.3	1 Chair , Music stand ,Wooden floor ,Sound absorption wall 2 Capacity : 10
B1113	Rehearsal Studio-08	7.2x5x2.7	1. Chair , Music stand ,Wooden floor ,Sound absorption wall 2. Capacity : 15
B1114	Rehearsal Studio-09	5.2x3.7x2.7	1. Chair , Music stand ,Wooden floor ,Sound absorption wall 2. Capacity : 10
B1115	Rehearsal Studio-10	5.2x4.1x2.7	1. Chair , Music stand ,Wooden floor , Sound absorption wall 2. Capacity : 10
B1116	Rehearsal Studio-11	5.2 x 4.1 x2.7	1. Chair , Music stand , Wooden floor , Sound absorption wall 2. Capacity : 10
B304	Chorus Rehearsal Room	15.9x9.9x8.8	1. Grand Piano ,Chair , Ensemble stool ,Wooden floor , Sound absorption curtain 2. Capacity : 80
B313	Orchestra Studio	18.7x14.3x7.8	1. fixed auditorium < 84seats > ,Grand Piano , Chair , Ensemble stool , Wooden floor , Sound absorption curtain 2. Capacity : 200

4-5-2 Carpentry Shop / Costume Shop / Laundry Room

National Kaohsiung Center for the Arts is equipped with basic production facilities, include Carpentry Shop, Costume Shop, and laundry rooms. Those for hire between four major theatres. The hire fees please refer to the rate tables of National Kaohsiung Center for the Arts.

Room No.	Name	Dimension (Length x Width x Height / m)	Notes
1002	Carpentry Shop	11.9x19.7x3	Basic wood crafts and electrical tools
1165	Costume Shop-01	5.9x10.2x3	Basic facilities for the maintenance of costume; Sewing machine, overlock machine and steam / iron equipment
1181	Costume Shop-02	5.8x11.8x3	
1163	Laundry Room-01	5.8x4.9x3	Washing machine, tumble dryers, sink and clothes folding table