

Recommended Carburetor Size for Engine Displacement

Engine Displacement (cc)

400 600 750 1000 & up

Available FCR Carburetor (Venturi dia. in mm)

32/33 32-35 35-39 37-41mm

This is the recommended carburetor size for a 4-cylinder engine that is tuned for road race use. Stock engines should use the next smaller size and engines tuned to maximum output, may use one size larger.

Flatslide CR Carburetors

The advanced technology found in Keihin CR Racing Carburetors has been proven in over twelve years of road racing with countless World Championship and National Championship Superbike victories. Along the way Keihin has established a respected reputation for quality, reliability and performance.

Following in their tradition of high technology and performance, Keihin's latest carburetor design for racing is the FCR designed for downdraft engine design use, featuring a flatslide throttle operating on rollerbearings in a smoothbore venturi.

This is the ultimate racing carburetor for use on downdraft engines as found in many popular sportbikes destined for serious competition. Keihin FCRs are the carburetors of choice on most factory superbikes and endurance teams using inline 4 cylinder engines including Team Suzuki and Team Kawasaki.



Keihin FCR Carburetors have earned a reputation for quality, reliability and performance worldwide. Sudco will continue to offer the most comprehensive selection of FCR carbs in the U.S. New applications are being developed all the time. If your bike is not listed, give us a call.



FCR Carburetor Kit for SV650

This carb kit cures the sluggish throttle response of the stock constant velocity carburetors. (Warning: if you install these carburetors, your bike may flip over in first and second gear.)

39mm Kit

Order No. 016-762

41mm Kit

Order No. 016-763



FCR Single Carb Kits for Dual Sport / Off Road

Flatslide CR Carburetors

The advanced technology found in Keihin CR Racing Carburetors has been proven in over twelve years of road racing with countless World Championship and National Championship Superbike victories. Along the way Keihin has established a respected reputation for quality, reliability and performance.

Following in their tradition of high technology and performance, Keihin's latest carburetor design for racing is the FCR designed for downdraft engine design use, featuring a flatslide throttle operating on rollerbearings in a smoothbore venturi.

This is the ultimate racing carburetor for use on downdraft engines as found in many popular sportbikes destined for serious competition. Keihin FCRs are the carburetors of choice on most factory superbikes and endurance teams using inline 4 cylinder engines including Team Suzuki and Team Kawasaki.

FCR APPLICATIONS

KEIHIN

Ducati	Year	mm	Part No.
750/900SS Dual	91-99	39	016-650
		41	016-670
750/900SS Dual	91-99	39	016-720*
		41	016-721*
750/900SS Split Singles	all	41	016-689
M900 Dual	all	39	016-722*
		41	016-723*
SS/M900 Split Singles (order manifolds separately)	all	39	016-746*
		41	016-747*

Honda	Year	mm	Part No.
XR250R		35(H)	016-693
TRX400EX	w/throttle	39(H)	016-759*
		41(H)	016-761*
		39(H)	016-786
		41(H)	016-783
CBR600	to 90	33	016-445*
CBR600F2	91-94	33	016-446*
		35	016-464*
CBR600F3	95-98	33	016-444*
		35	016-465*
CBR600F4 w/ TPS	99-00	35	016-523*
XR600	89-00	41(H)	016-730*
		41(H)	016-697
NT650 Hawk	all	39	016-751*
		41	016-752*
NX650		41(H)	016-697
XR650L	93-99	41(H)	016-749*
XR650R w/ air cleaner w/o air cleaner	00-02	41(H)	016-766*
		41(H)	016-765*
		41(H)	016-784
Hawk (2 carbs req'd)		39(H)	016-686
		41(H)	016-688
CBR900RR	93-95	39	016-501*
		41	016-511*
		39	016-488
	96-99	41	016-516
		39(H)	016-566
CB1000		41(H)	016-589
		39(H)	016-568
CB1100F	83	39(H)	016-568
CBR1100XX Blackbird	all	41	016-592

Kawasaki	Year	mm	Part No.
ZX-6 Ninja	all	33	016-449
		35	016-460

* Push/Pull Cables included
+ Push/Pull Cable Assy required: Order

(H) Horizontal
n Carb Only
n Kit

throttle 021-280
cables 021-281

Kawasaki (cont'd)	Year	mm	Part No.
ZX-6R "Ram Air Kit"	95-99	35	016-741*
		35	016-469*
ZX-7 Ninja	89-90	37	016-474
		39	016-494
ZX-7R Ninja	91-95	39	016-497
		41	016-510
ZX-7R	96-99	39	016-487*
		41	016-515*
ZR750 Zephyr	92	35	016-520
ZX-9R "Ram Air Kit"	94-97	39	016-725*
		41	016-726*
	94-97	39	016-486*
		41	016-517*
	98-99	41	016-590*
		all	37(H)
GPZ900 Ninja		39(H)	016-500
		82-on	39(H)
KZ1000	82-on	39(H)	016-560
KZ1000 MKII	79-80	35(H)	016-743
KZ1000 J/R		37(H)	016-546
		39(H)	016-567
KZ1000 J/R	82-84	35(H)	016-521
ZX-10 Ninja	all	37	016-480
		39	016-495
		41	016-506
ZX-11 Ninja	89-92	37	016-481
		39	016-496
		41	016-507
ZX-11D	93-99	39	016-503*
		41	016-513*
ZR1100 Zephyr	all	39(H)	016-500
ZRX1100	99	37(H)	016-540
		39(H)	016-500
		41(H)	016-587
Vulcan 1500 Classic w/ aircleaner	96-97	41(H)	016-733*
w/o aircleaner		41(H)	016-732*

KTM	Year	mm	Part No.
LC4/RXC 400	98-on	39(H)	016-740*
RXC/Duke 620	95-99	41(H)	016-739*
		41(H)	016-782

When placing the order, indicate if you have an unitized or separate throttle/kill switch assy. We will supply the correct throttle assy for your KTM kit.

Moto-Guzzi	Year	mm	Part No.
1100 Sport Carb Kit (Carbureted models only)	94-96	41(H)	016-744*

Please contact the carburetor department at Sudco where our trained technicians can assist you with any special carburetor installation applications and tuning information.

KEIHIN FCR APPLICATIONS

Suzuki	Year	mm	Part No.
LTZ400		39 41	016-855 016-856
GSXR600 liquid cooled	92-93	37(H)	016-544*
GSXR600 w/ TPS	97-99	35 37	016-522* 016-545*
RF600		35	016-467*
SV650	99-02	39 41	016-762* 016-763*
GSXR750 air cooled (1100 Euro)	to 92	39(H) 41(H)	016-498+ 016-508+
liquid cooled (1100 Euro)	93-95	39(H) 41(H)	016-562* 016-584*
GSXR750	96-97	39 41	016-489* 016-514*
GSXR750 "Ram Air Kit"	96-97	39 41	016-727* 016-728*
RF900 GSX1100		39 39	016-504* 016-560
GSXR1100 air cooled	to 92	39(H) 41(H)	016-565+ 016-509+
liquid cooled	93-99	39(H) 41(H)	016-563* 016-585*
GS1100/1150	81-on	39(H)	016-560

Yamaha	Year	mm	Part No.
SR500 w/ choke		39(H) 41(H)	016-798 016-799
w/o choke		39(H) 41(H)	016-696 016-781
FZR600	all	33	016-447*
YZF600	94-99	33 35	016-442 016-468*
YZF-R6 w/TPS		35	016-524*
SRX6 Dual	all	35(H) 39(H)	016-700 016-652
YFM660R Raptor	all	35(H) 39	016-850* 016-851*
FZR750 OWO1	all	41	016-505*
YZF750R	93-98	39	016-502*
YZF750SP		41	016-512*
TDM850 Dual	all	41 41	016-671 016-735*
TRX850 Dual	all	41	016-671
YZF1000 w/TPS	97	39 41	016-490* 016-518*
YZF1000R1 w/TPS	98-99	41	016-591*
FZR1000	87-88	39 41	016-493* 016-505
(use 90 later intake boots for FZR1000 41mm)			
FZR1000	89-96	37 39	016-477* 016-492*

Yamaha	Year	mm	Part No.
XJR1200	all	39(H)	016-569
XJR1200/1300 w/ TPS	all	39(H)	016-570
Triumph	94-99	39(H)	016-716

Harley-Davidson	Year	mm	Part No.
carb only		41	016-694
Big Twin w/ air cleaner (80 cubic inches)	90-99	41	016-755
w/o air cleaner	90-99	41	016-756
Sportster	all	39	016-753

BMW	Year	mm	Part No.
R100R (2 carbs req'd)		37(H) 41(H)	016-694 016-780
F650 Dual		39(H)	016-653
* Push/Pull Cables included			
+ Push/Pull Cable Assiy required: Order throttle cables 021-280			
(H) Horizontal			
n Carb Only			
n Kit			

Horizontal Single Carbs		
		<i>Order No.</i>
	28mm	016-691
BMW	37mm	016-694
	39mm	016-695
HD	41mm	016-699
	41mm	016-698

Keihin FCR Tools

These tools allow access to allen screws from awkward angles which are not possible with traditional hex keys.

4mm Ball Hex Driver **Order No. 950-211**
3mm Ball Hex Driver **950-210**

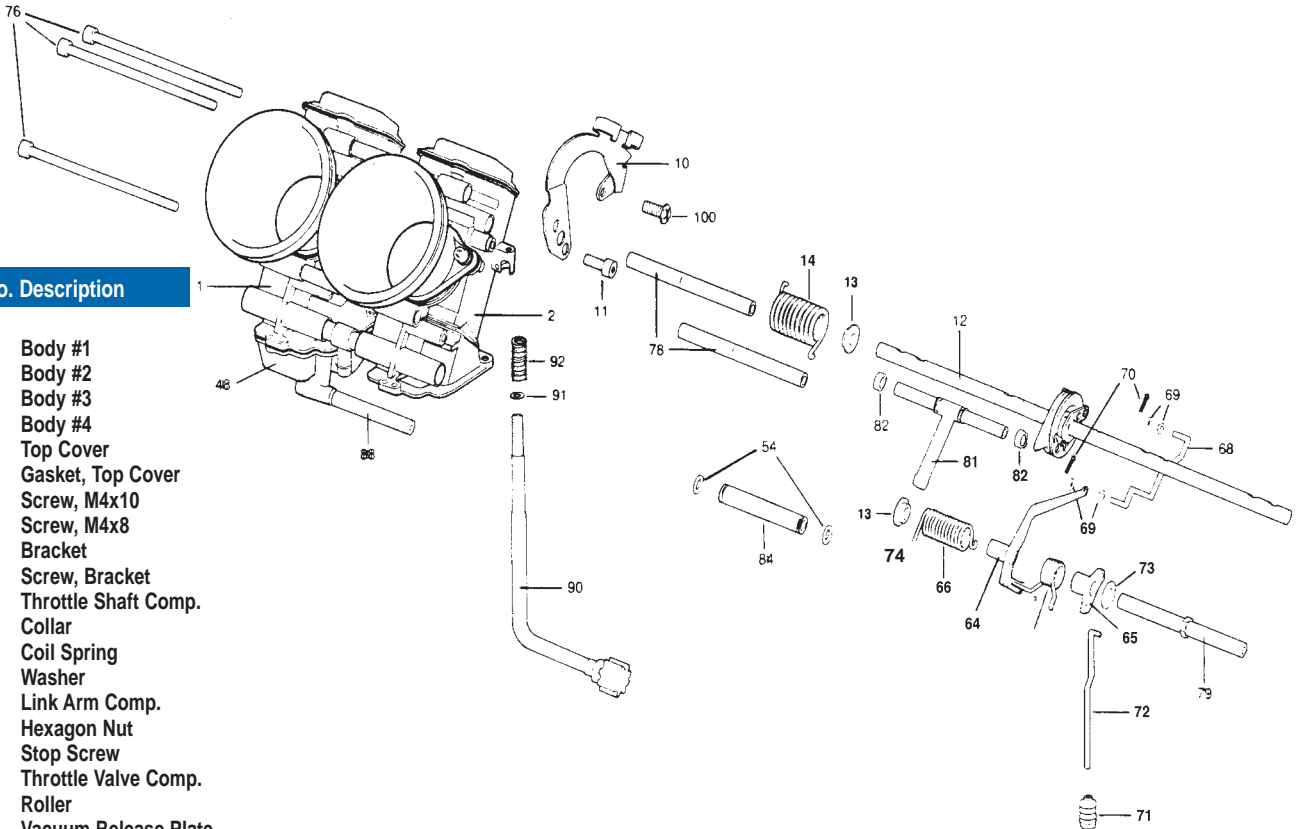


Keihin / Mikuni Main Jet Wrench

Order No. **002-401**



KEIHIN FCR DOWNDRAFT

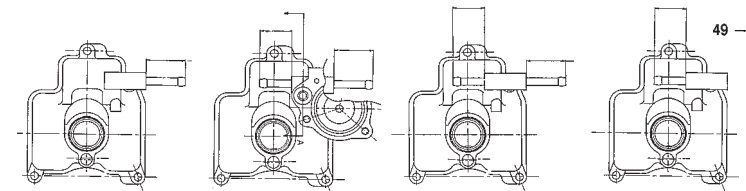


Item No. Description

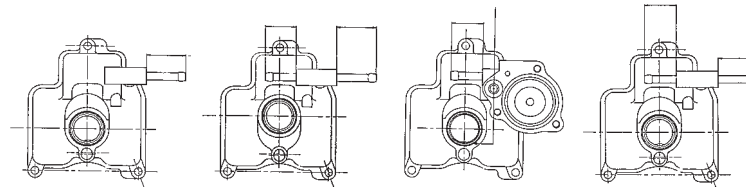
1. Body #1
2. Body #2
3. Body #3
4. Body #4
5. Top Cover
6. Gasket, Top Cover
8. Screw, M4x10
9. Screw, M4x8
10. Bracket
11. Screw, Bracket
12. Throttle Shaft Comp.
13. Collar
14. Coil Spring
15. Washer
16. Link Arm Comp.
17. Hexagon Nut
18. Stop Screw
19. Throttle Valve Comp.
20. Roller
21. Vacuum Release Plate
22. Seal
23. Jet Needle
24. Clip, Jet Needle
25. Needle Jet Screw
26. Main Nozzle
27. Main Jet
28. Slow Jet
30. Slow Air Jet
32. Pilot Screw
33. Coil Spring, Pilot Screw
34. O-Ring, Pilot Screw
35. Washer, Pilot Screw
36. Valve Seat
37. O-Ring, Valve Seat
38. Screw, Valve Seat
39. Float Comp.
40. Arm Pin
41. Screw, Arm Pin
42. Float Valve Comp.
43. Clip, Float Valve
45. Packing, Float Bowl
47. Cover Acc'p
48. Float Bowl #1
49. Float Bowl #2
50. Float Bowl #4
51. Diaphragm Comp.
52. U-Ring, Acc'p
53. Coil Spring, Acc'p
54. O-Ring, Acc'p
64. Link Lever Comp.
65. Link Lever
66. Coil Spring #1, Link
67. Coil Spring #2, Link
68. Rod, Link Lever
69. Washer, Rod, Link
70. Pin, Link Lever
71. Rubber Cap

D=Downdraft
H=Horizontal

Center Linkage



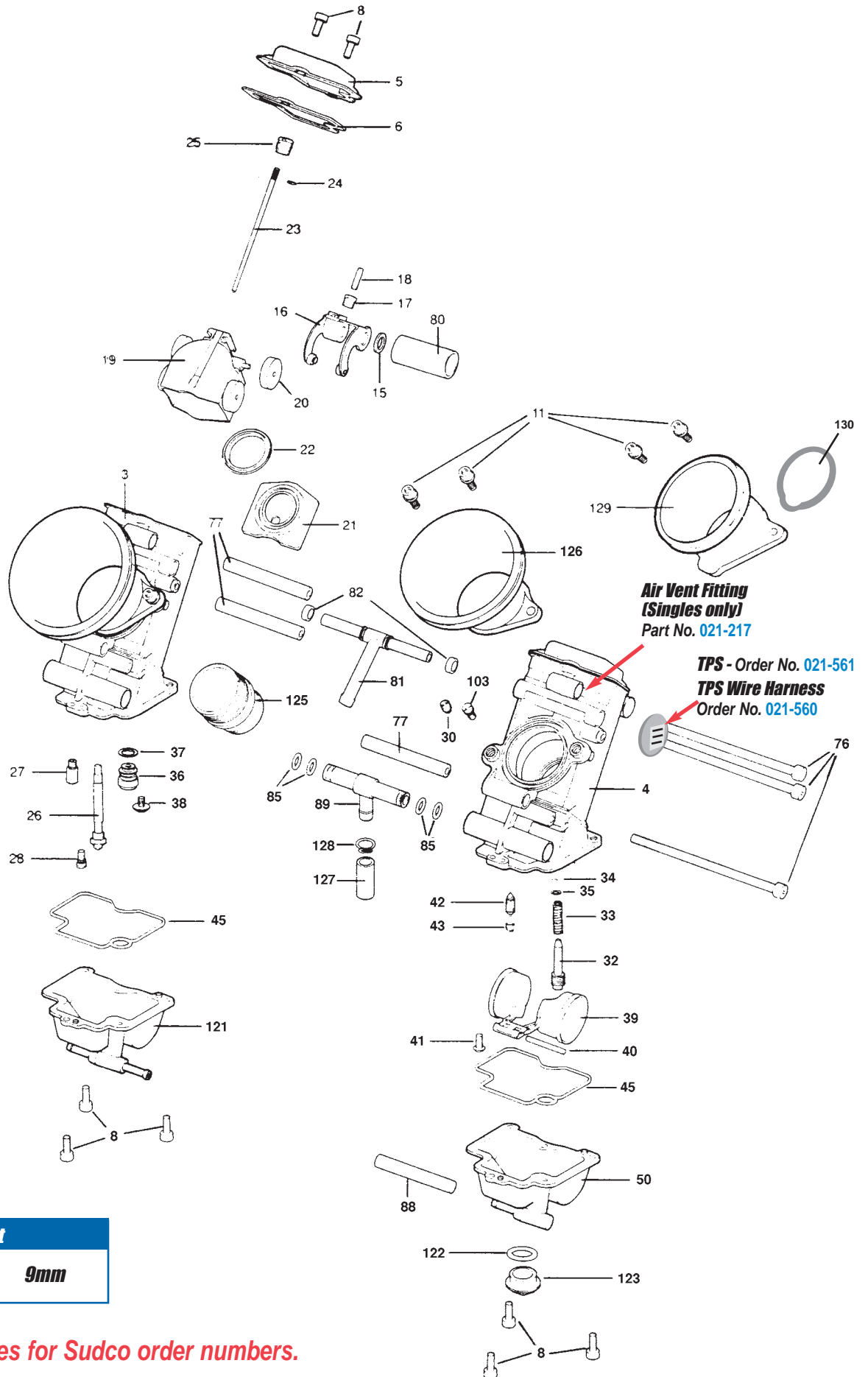
D	021-059	021-061	021-107	021-063
H	021-260	021-259	021-261	021-262



D	021-059	021-107	021-107	021-064
H	021-260	021-261	021-261	021-263

Right Linkage

- | | | | | | | | | | | | | | | | | | | | | | | | | | | | |
|---------------|------------------------|------------------------|------------------|-----------------------|-----------------------|-----------------------|-----------------|--------------------|----------------------|-------------------------|------------------------|------------------------|------------------|----------------------|------------------------|-----------------------------|---------------------|-------------------|--------------------|-------------------------|---------------------------|--------------------|---------------------|--------------------------|-----------------------|--------------------------|----------------------------------|
| 72. Rod, Acap | 73. Washer, Link Lever | 74. Collar, Link Lever | 76. Bolt, M5x110 | 77. Spacing Collar #1 | 78. Spacing Collar #2 | 79. Spacing Collar #3 | 80. Rubber Pipe | 81. Air Vent Joint | 82. U-Ring, Air Vent | 84. Fuel Joint (center) | 85. O-Ring, F. T-Joint | 88. Rubber Pipe (R.L.) | 89. Fuel T-Joint | 90. Step Screw Comp. | 91. Washer, Stop Screw | 92. Coil Spring, Step Screw | 100. Screw, Bracket | 103. Main Air Jet | 121. Float Bowl #3 | 122. O-Ring, Drain Bolt | 124. Rubber Pipe (center) | 125. Mount Adapter | 126. Velocity Stack | 127. Rubber Cap, T-Joint | 128. Clip, Rubber Cap | 129. Air Cleaner Adapter | 130. O-Ring, Ram Air Box Adapter |
|---------------|------------------------|------------------------|------------------|-----------------------|-----------------------|-----------------------|-----------------|--------------------|----------------------|-------------------------|------------------------|------------------------|------------------|----------------------|------------------------|-----------------------------|---------------------|-------------------|--------------------|-------------------------|---------------------------|--------------------|---------------------|--------------------------|-----------------------|--------------------------|----------------------------------|



Float Height	
All sizes	9mm

See following pages for Sudco order numbers.

5.	Top Cover			
	021-002	1030-850-2000	28-33mm	
	021-003	1030-855-2000	35-41mm	
6.	Gasket, Top Cover			
	021-005	1031-805-2000	28-33mm	
	021-006	1031-806-2000	35-39mm	
	021-007	1031-807-2000	41mm	
8.	Screw M4x10 x0.7			
	021-008	0136-807-1100	all	
9.	Screw M4x8			
	021-010	0136-808-1100	all	
10.	Mounting Bracket			
	Order #	Application	Carb Size	
	021-127	CBR600	32, 33mm	
	021-126	CBR600F2 / F3	32, 33mm	
	021-125	FZR400/600, YZF600	32, 33mm	
	021-129	ZX6, ZX10, ZX11, GSXR Air Cooled (all) Triumph, Zephyr, BMW	35-41mm	
	021-131	CBRF3, CBR900, CB1000, YZF1000R1/600 FZR750, FZR1000	35-41mm	
	021-132	Ducati Dual, Ducati Single SV650 (F)	35-41mm	
	021-133	KTM, XR250, SR500	35-41mm Single Carb 30 degree	
	021-134	XR600 TRX400EX, SV650 (R)	35-41mm Single Carb 15 degree	
	021-551	H-D Evo CV stock Cable	41mm	
	021-549	Single Carb 0 degree	35-41mm	
	021-550	Late GSX-R		
	021-249	GSXR Liquid Cooled, Vulcan 1500, MotoGuzzi	35-41mm	
	021-122	ZX7 '91-'95, ZX9R, R-6	35-41mm	
11.	Screw, Bracket			
	021-012	0136-803-1100	all	
12.	Throttle Shaft		Pitch:	
	021-135	5025-951-2100	71-96-71	
	021-137	5025-955-2100	75-96-75	
	021-139	5025-956-2100	86-92-86	
	021-141	5025-955-2200	75-86-75	
	021-142	5025-977-2200	75-75-75	
	021-143	5025-953-2100	71-83-71	
	021-144	5025-984-2100	101	
13.	Collar			
	021-014	1305-958-7000	all	
14.	Coil Spring			
	021-016	1305-932-2001	standard / multi	
	021-253	1305-942-2000	singles, light multi	
15.	Washer			
	021-018	0301-092-7000	all	
16.	Link Arm			
	021-020	1061-815-2100	28-33	
	021-021	1061-816-2100	35-39	
17.	Hexagon Nut			
	021-023	0208-811-1100	all	
18.	Stop Screw			
	021-025	1034-836-2000	all	
19.	Throttle Valve			
	021-300	N501-18C02		28-33
	021-325	N501-20C00		35-39
20.	Roller			
	021-027	1119-803-7002		
21.	Vaccum Release Plate			
	021-029	1609-801-2101		28-33
	021-030	1609-802-2101		35-41
22.	Seal			
	021-032	1099-816-6001		28-33
	021-033	1099-817-2001		35-39
23.	Needles	N427-90-n n n N427-OC-n n n		28-33 35-39
		(See chart on pg. 182)		
24.	Clip			
	018-616	1421-802-1000		all
25.	Needle Set Screw			
	021-034	1421-801-2000		all
26.	Main Nozzle			
	021-037	1154-835-2100		all Downdraft
	021-036	1154-838-2000		all Horizontal
27.	Main Jet	99101-357-n n n		
		(See chart on pg. 206)		
28.	Slow Jet	N424-25-n n n		
		(See chart on pg. 207)		
30.	Slow Air Screw and Spring	- See pg. 183 (replaces Slow Air Jet)		
	021-230	1014-817-2000		screw
	021-235	16052-KM4-0040		spring
32.	Pilot Screw			
	021-039	N447-05A00		6° taper all
	021-038	N447-05C00		9° taper (option)
	021-040	N447-05B00		12° taper (option)
33.	Pilot Screw, Coil Spring			
	021-041	1290-812-2001		all
34.	Pilot Screw, O-Ring			
	021-043	W9351-11028		all
35.	Pilot Screw Washer			
	021-045	0301-803-2000		all
36.	Valve Seat	N361-03-n		
		Fuel pump applications use N. Valve 018-676		
	021-218	1.00		all Downdraft
	021-219	1.20		"
	021-220	1.40		"
	021-221	1.60		"
	021-222	1.80		"
	021-223	2.00 Std.	Downdraft	"
	021-224	2.20		"
	021-225	2.40		"
	021-226	2.60		"
		Valve Seat N361-043- n		
		Gravity Flow applications use 018-504 N. Valve		
	021-240	3.20 Std.	Horizontal	all Horizontal
	021-241	3.40		"
	021-242	3.60		"
	021-243	3.80		"
	021-244	4.00		"
37.	Valve Seat O-Ring			
	021-047	W9351-13090		all



Eric Brown
photo by Michael Sommer
(Sand Sport Magazine)

38.	Valve Seal Screw						
	021-049	0118-804-100	Downdraft				
	021-250	0118-806-1100	Horizontal				
39.	Float Comp.						
	021-051	1052-837-2200	all				
40.	Arm Pin						
	018-670	W9525-25250	all				
41.	Arm Pin Screw						
	021-053	93500-04008	all				
42.	Float Valve Comp.						
	018-676	W9522-53001	all Downdraft				
	018-504	1062-814-2100	all Horizontal				
43.	Float Valve Clip						
	018-674	0405-019-1000	all				
45.	Float Bowl Packing						
	021-055	1202-846-6000	all				
47.	Cover, Accelerator Pump						
	021-057	1230-826-2001	all				
48.	Float Bowl						
	021-260	1050-881-2100 #1	Horizontal				
49.	021-059	1050-864-2100 #1	Downdraft				
	021-061	1050-865-2100 #2	"D" w/ centerpull				
	021-259	1050-880-2100 #2	Horizontal w/ center pull				
	021-258	1050-868-2100	Single Downdraft				
	021-264	1050-886-2100	Single Horizontal				
50.	021-063	1050-866-2100 #4	"D" w/ centerpull				
	021-064	1050-862-2100 #4	"D" w/ right pull				
	021-263	1050-885-2100 #4	"H" w/ right pull				
	021-262	1050-883-2100 #4	"H" w/ center pull				
51.	Diaphragm Comp.						
	021-065	1201-055-2101	all				
52.	O-Ring, Accelerator Pump						
	021-067	W9353-36000	all				
53.	Coil Spring, Accelerator Pump						
	021-069	1300-142-2000	all				
54.	O-Ring, Accelerator Pump						
	021-071	W9351-19058	all				
64.	Link Lever Comp.						
	021-073	1100-868-2100	28-33mm				
	021-074	1100-870-2100	35-39mm				
65.	Link Lever						
	021-076	1100-867-7001	all				
	021-252	1100-872-7000	Horizontal				
66.	Coil Spring						
	021-078	1305-933-2000 #1	all				
67.	021-080	1305-934-2000 #2	28-33mm "D"				
	021-081	1305-939-2000 #2	35-39mm "D"				
	021-254	1305-952-2000	Horizontal				
68.	Rod, Link Lever						
	021-083	1458-825-2000	all				
	021-256	1458-827-2000	GSXR aircooled				
69.	Washer, Rod Link						
	021-085	0301-136-7000	all				
70.	Pin, Link Lever						
	021-087	W9251-12081	all				
71.	Rubber Cap						
	021-089	1028-825-2001	all				
72.	Rod						
	021-091	1458-826-2000	Downshaft				
	021-255	1458-829-2000	Horizontal				
73.	Washer, Link Lever						
	021-093	0301-114-1000	all				
74.	Collar, Link Lever						
	021-095	W1704-241-9900	all				
76.	Bolt M5						
	021-145	0136-801-1100	95mm	CBR600, FZR400/600			
	021-147	0136-811-1100	100mm	ZX6/7/10/11			
	021-149	0136-812-1100	110mm	FZR750/1000			
	021-146	0136-809-1100	90mm	M5x90 (Option)			
77.	Spacing Collar #1						
	021-153	N704-01056 56mm		CBR600, CB1,FZR400, FZR600			
	021-155	N704-01060 60mm		ZX6/10/11			
	021-157	N704-01071 71mm		FZR750/1000			
	021-151	N704-01050 50mm		(option)			
	021-152	N704-01053 53mm		(option)			
	021-156	N704-01068 68mm		(option)			
78.	Spacing Collar #2						
	021-161	N704-02071 71mm		ZX7/10/11			
	021-163	N704-02077 77mm		CB1,FZR750/1000			
	021-167	N704-02081 81mm		ZX6, CBR600, FZR400/600			

KEIHIN FCR PARTS

78.	Spacing Collar #2 (cont'd)		
	021-158	N704-02050 50mm	(option)
	021-159	N704-02053 53mm	(option)
	021-160	N704-02068 68mm	(option)
	021-168	N704-02089 89mm	(option)
79.	Spacing Collar #3		
	021-171	N704-03071 71mm	ZX7/10/11
	021-173	N704-03077 77mm	CB1, FZR750/1000
	021-175	N704-03081 81mm	CBR600, FZR400,
	021-169	N704-03056 56mm	FZR600, ZX6
	021-170	N704-03060 60mm	
	021-172	N704-03065 65mm	
	021-174	N704-03068 68mm	
	021-176	N704-03089 89mm	
80.	Rubber Pipe		
	021-179	0804-985-0000 34mm	CBR600, FZR400
			FZR600, CB1,
			ZX7/10/11
	021-181	0804-990-0000 41mm	ZX6
	021-183	0804-992-0000 46mm	FZR750/1000
	021-180	0804-988-0000 31mm	(option)
81.	Air Vent Joint (Breather)		
	021-187	1077-826-7000	all (R1)
	021-188	1077-806-7001	Dual Ducati
82.	U-Ring Air Vent		
	021-097	W9353-65000	all
84.	Fuel Joint (center)		
	021-191	1075-834-2000	CBR600, FZR400
			FZR600, CB1,
			ZX6, FZR750/1000
	021-193	1075-836-2000	ZX7/10/11
85.	O-Ring, Fuel T-Joint		
	018-755	W9351-13057	all
88.	Rubber Pipe (R.L.)		
	021-197	0804-991-0000 45mm	CBR600, CB1,
			FZR400/600
	021-199	0804-437-0001 50mm	ZX6
	021-201	0804-991-0000 60mm	FZR750/1000 (R.L./Ctr)
			GSX-R750 93-95
	021-203	0804-991-0000 70mm	ZX7/10/11
	021-202	0804-444-0000 40mm	(option)
89.	Fuel T-Joint		
	018-751	1077-804-7000	CBR600, CB1,
			FZR400/600
			ZX6/10/11
			86-92 GSXR
	018-753	1077-803-7000	FZR750/1000
			Liq. Cool GSXR
	021-251	1074-848-2100	Singles downdraft
	021-190	1077-834-2100	Dual Ducati
90.	Step Screw Comp.		
	021-099	1034-837-2100	all
	021-531	1034-837-2501	13.25"
91.	Washer, Stop Screw		
	021-101	0301-078-1200	all
92.	Coil Spring, Stop Screw		
	021-103	1300-112-2000	all
100.	Screw, Bracket		
	021-105	0136-804-1100	all
103.	Main Air Jet	99101-393-n n n	
	(See chart on pg. 206)		

121.	Float Bowl		
	021-107	1050-863-2100	#3 "D" w/ center pull
			#2 "D" w/ right pull
	021-261	1050-882-2100	#3 "H" w/ center pull
	021-261	1050-882-2100	#2 "H" w/ right pull
122.	O-Ring, Drain Bolt		
	021-109	W9351-19145	all
123.	Drain Bolt		
	021-111	1018-804-2000	all
124.	Rubber Pipe		
	021-201	0804-437-0001 60mm	ZX6/7/10/11
	021-209	0804-986-0000 70mm	CBR600, CB1
			FZR750/1000
	021-210	0804-987-0000 80mm	(option)
125.	Adapters - see chart on pg. 180		
126.	Velocity Stacks shown below		
	*Sold Individually		
	021-113	1130-806-7002	28-33mm Blue (50mm)
	021-114	1130-807-7000	35-41mm Blue (50mm)
	021-115	1130-808-7000	35-41mm Red (35mm Long)
127.	Rubber Cap, T-Joint		
	018-759	1028-808-7000	all
128.	Clip, Rubber Cap		
	018-761	W9535-55000	all
129.	Air Cleaner Adapter - See chart on pg. 178-179		
130.	O-Ring, Air Cleaner Adapter		
	021-439		FCR 35-41 all



Sudco Velocity Stacks shown above

Precision machined aluminum, velocity stacks for Keihin FCR Carburetors. Secure external screw mounting with a beautiful blue anodized finish.

Order by each

FCR Carb Size:	Length:	Color:	Order No:
32-33mm	15mm	Blue	020-250
	30mm	Blue	020-254
35-41mm	15mm	Blue	020-252
	"	Red	020-253
	30mm	Blue	020-256
	"	Red	020-257
	"	Polished	020-258
	50mm	Blue	020-260
	"	Red	020-262
	70mm	Blue	020-266
	"	Red	020-268

FCR ACCESSORIES

FCR- Thottle Cables, Throttle Kits

HONDA

CBR 600/F-2 all years

021-294	1 set	Push/Pull cables
021-294A	each	Pull only
021-294B	each	Push only

CBR 600/F-3 all years

021-266	1 set	Push/Pull cables
021-266A	each	Pull only
021-266B	each	Push only

XR 600

021-298	1 set	Push/Pull cables
021-298A	each	Pull only
021-298B	each	Push only

Hawk GT

021-271	1 kit	Throttle with cables
021-272	1 set	Push/Pull cables

XR650L

021-903	1 set	Push/Pull cables
021-903A	each	Pull only
021-903B	each	Push only

CBR 900 all

021-295	1 set	Push/Pull cables
021-295A	each	Pull only
021-295B	each	Push only

KAWASAKI

ZX-6R '95-'97

021-900	1 set	Push/Pull cables
021-900A	each	Pull only
021-900B	each	Push only

ZX7 '96-'99/ZX-9R '94-'97

021-282	1 set	Push/Pull cables
021-282A	each	Pull only
021-282B	each	Push only

ZX-9R '98-'00/ZX6R '00

021-901 1 set

Throttle Cable

ZX-11C, D '90-'97

021-268	1 set	Push/Pull cables
021-268A	each	Pull only
021-268B	each	Push only

Vulcan 1500 Classic

021-283	1 set	Push/Pull cables
021-283A	each	Pull only
021-283B	each	Push only

SUZUKI

GSXR 600/750 Liquid cooled '93-'98

021-297	1 set	Push/Pull cables
021-297A	each	Pull only
021-297B	each	Push only

RF 600/900

021-288	1 set	Push/Pull cables
021-288A	each	Pull only
021-288B	each	Push only

SV650

021-932	1 set	Push/Pull cables
021-932A	each	Pull only
021-932B	each	Push only

SUZUKI (cont'd)

GSXR 750/1000 Air cooled '89-'92

021-280	each	Throttle Assembly only
021-281	set	Push/Pull cables

GSXR750 '96 and GSXR600 '97

021-267	1 set	Push/Pull cables
021-267A	each	Pull only
021-267B	each	Push only

YAMAHA

FZR 400/600 all years

021-290	1 set	Push/Pull cables
021-290A	each	Pull only
021-290B	each	Push only

YZF 600 '94-'95

021-293	1 set	Push/Pull cables
---------	-------	------------------

FZR 750/1000 '87-'90

021-292	1 set	Push/Pull cables
021-292A	each	Pull only
021-292B	each	Push only

FZR 1000 '91-'95

021-293	1 set	Push/Pull cables
---------	-------	------------------

YZF1000R1/ R6

021-930	1 set	Push/Pull throttle
---------	-------	--------------------

DUCATI (following Ducati kits replace the stock throttle)

750/900SS '93-'95 (with dual carbs)

021-285	1 kit	Throttle with Push/Pull cables
021-285A	set	Push/Pull cables
021-280	each	Throttle only

M900 (with dual carbs)

021-286	1 kit	Throttle with Push/Pull cables
021-286A	set	Push/Pull cables
021-280	each	Throttle only

SS/M900 (with single carbs)

021-284	1 kit	Throttle with split Push/Pull cables
021-284A	set	Split Push/Pull cables
021-280	each	Throttle only

DINOSAUR CLASS SUPERBIKES WITH TUBULAR BARS

005-230	1 kit	Throttle with Push/Pull cables
005-230A	each	Pull only
005-230B	each	Push only
005-230C	each	Throttle only

KTM

620 RXC & Duke w/ unitized throttle kill assy.

021-291	1 kit	Cable set
021-291A	each	Pull only
021-291B	each	Push only

620 RXC & Duke w/ separate kill assy.

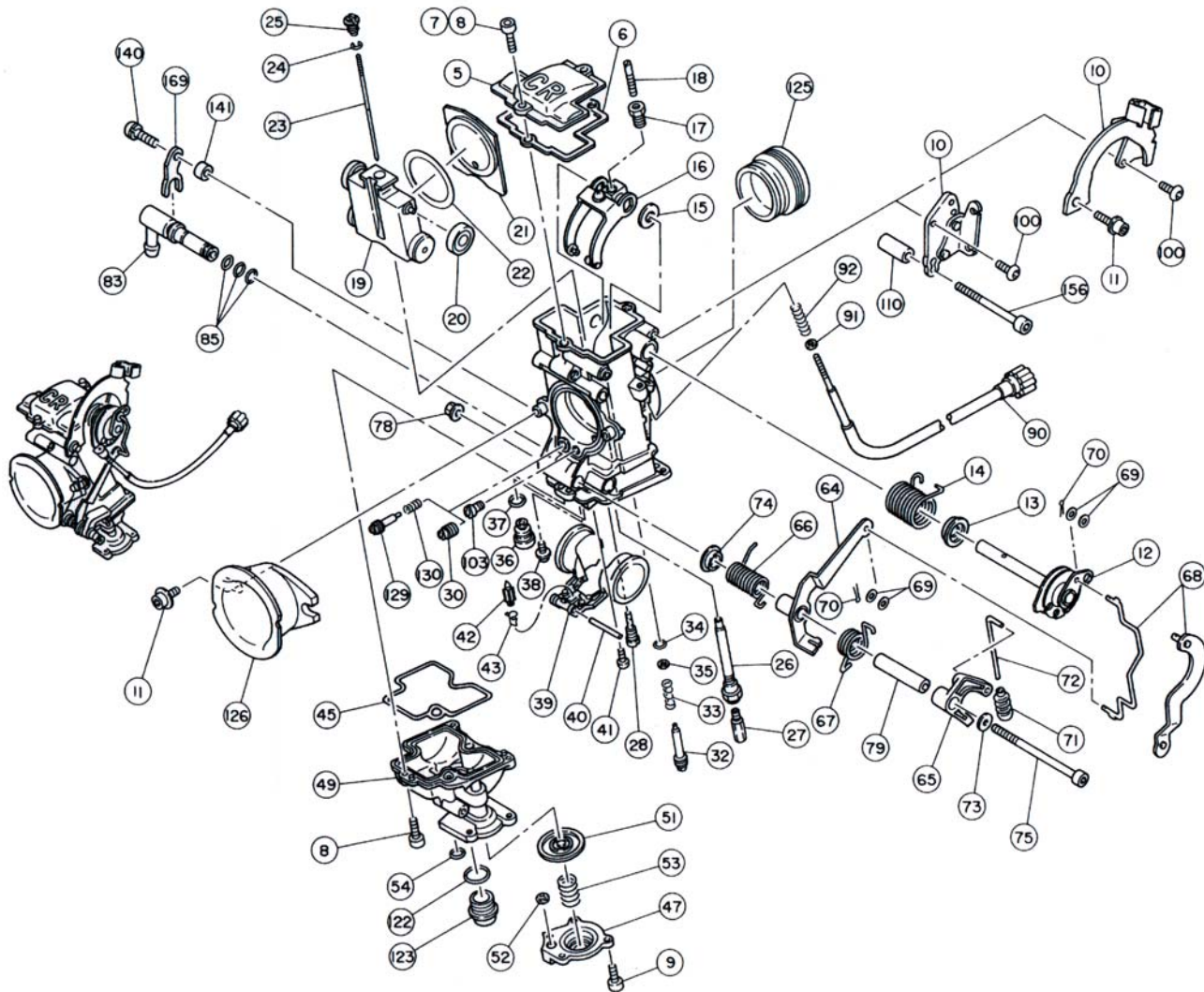
021-280	1 kit	Throttle
021-281	1 kit	Cable Set

UNIVERSAL

021-280	1 each	Throttle only (Yamaha YZF style)
021-281	set	Push/Pull cables (Sport Bikes)
021-281.5	set	Push/Pull cables (Quads & Dirt Bike)

*5 inch longer than 021-281

KEIHIN FCR HORIZONTAL



Parts List

5.	Top Cover 021-003	1030-855-2000	35-41mm	
6.	Gasket, Top Cover 021-006 021-007	1031-806-2000 1031-807-2000	35-39mm 41mm	
7.	Screw M4x12 021-700	0136-806-1100	all	
8.	Screw M4x10 x0.7 021-008	0136-807-1100	all	
9.	Screw M4x8 021-010	0136-808-1100	all	
10.	Cable Bracket 021-551	1190-B12-2100	all	
11.	Screw, Bracket 021-012	0136-803-1100	all	
12.	Throttle Shaft Comp. 021-701	5025-960-2101	all	
13.	Collar 021-014	1305-958-7000	all	
14.	Coil Spring 021-253	1305-942-2000	singles/ light multi	
15.	Washer 021-018	0301-092-7000	all	
16.	Link Arm Comp. 021-021	1061-816-2100	35-39mm	
17.	Hexagon Nut 021-023	0208-811-1101	all	
18.	Stop Screw 021-025	1034-836-2000	all	

- 19. Throttle Valve Comp.
021-325 N501-20C00 35-39mm
- 20. Roller
021-027 1119-803-7002
- 21. Vacuum Release Plate
021-030 1609-802-2101 35-41mm
- 22. Seal
021-033 1099-817-6000 35-39mm
- 23. Jet Needles **N427-OC-n n n** See pg. 182
- 24. Clip, Jet Needle
018-616 0403-802-1000 all
- 25. Needle Set Screw
021-034 1421-801-2000 all
- 26. Main Nozzle
021-036 1154-838-2000 all
- 27. Main Jet **99101-357-n n n** See pg. 206
- 28. Slow Jet **N424-25-n n n** See pg. 207
- 30. Slow Air Jet

Keihin FCR Slow Air Screw Set Conversion

Out:Lean / In:Rich Air Screw	Slow Air Jet
1/4 turn out	#45
3/8	#55
1/2	#65
5/8	#75
3/4	#85
7/8	#95
1	#100
1-1/8	#110
1-1/4	#120
1-1/2	#125
1-3/4	#130
2	#135
2-1/4	#140
2-1/2	#145
2-3/4	#150
3	#155

99101-ZF5-n n n See pg.183
(could be replaced with Slow Air Screw(see #129 & 130))

- 32. Pilot Screw
021-039 N447-05A00 6° taper all
- 33. Coil Spring, Pilot Screw
021-041 1290-812-2001 all
- 34. O-Ring, Pilot Screw
021-043 W9351-11028 all
- 35. Washer, Pilot Screw
021-045 0301-803-2000 all
- 36. Valve Seat **N361-03-n**
Fuel pump applications use N. Valve **018-676**
 - 021-218** 1.00 all
 - 021-219** 1.20 "
 - 021-220** 1.40 "
 - 021-221** 1.60 "
 - 021-222** 1.80 "
 - 021-223** 2.00 Std. "
 - 021-224** 2.20 "
 - 021-225** 2.40 "
 - 021-226** 2.60 "

- Valve Seat **N361-04-n**
Gravity Flow applications use **018-504** N. Valve
 - 021-240** 3.20 Std. 4 cyl. all
 - 021-241** 3.40 " "
 - 021-242** 3.60 " "
 - 021-243** 3.80 Std. Singles " "
 - 021-244** 4.00 " "
- 37. O-Ring, Valve Seat
021-047 W9351-13090 all
- 38. Screw, Valve Seal
021-250 0118-806-1100 all
- 39. Float Comp.
021-051 1052-837-2200 all
- 40. Arm Pin
018-670 W9525-25250 all
- 41. Screw, Arm Pin
021-053 93500-04008 all
- 42. Float Valve Comp.
018-504 1062-814-2100 all
- 43. Clip, Float Valve
018-674 0405-019-1000 all
- 45. Packing, Float Bowl
021-055 1202-846-6000 all
- 47. Cover, Accelerator Pump
021-057 1230-826-6000 all
- 49. Float Bowl #1
021-264 1050-886-2100 all
- 51. Diaphragm Comp.
021-065 1201-055-2101 all
- 52. O-Ring, Accelerator Pump
021-067 W9353-36000 all
- 53. Coil Spring, Accelerator Pump
021-069 1300-142-2000 all
- 54. O-Ring, Accelerator Pump
021-071 W9351-19058 all
- 64. Link Lever Comp.
021-074 1100-870-2100 35-39mm
- 65. Link Lever
021-252 1100-872-7000 all
- 66. Coil Spring #1, Link Lever
021-078 1305-933-2000 all
- 67. Coil Spring #2, Link Lever
021-254 1305-952-2000 all
- 68. Rod, Link Lever
021-022 1061-818-2100 all
- 69. Washer, Rod Link
021-085 0301-136-7000 all
- 70. Pin, Link Lever
021-087 W9251-12081 all
- 71. Rubber Cap
021-089 1028-825-2001 all
- 72. Rod
021-255 1458-829-2000 all
- 73. Washer, Link Lever
021-856 W1795-097-9900 all

KEIHIN FCR PARTS

- | | |
|---|---|
| 74. Collar, Link Lever
021-095 W1704-241-9900 all | 125. Adapters
020-450 1253-875-2000 39mm
020-459 1253-883-2001 41mm |
| 75. Bolt
021-702 0136-818-1100 | 126. Velocity Stacks (standard 50mm long)
<i>*Sold Individually</i>
021-114 1130-807-7000 Blue, 50mm Long (std)
021-115 1130-808-7000 Red, 35mm Long |
| 78. Nut
021-703 0208-810-1100 | 129. Slow Air Screw
021-230 1014-817-2000 |
| 79. Collar
021-704 1118-959-2000 | 130. Coil Spring
021-235 16052-KM4-0040 |
| 85. L-Joint
021-751 1074-848-2300 | 140. Bolt
021-705 N114-06161 |
| 85. O-Ring, Fuel L-Joint
018-755 W9351-13057 all | 141. Collar
021-706 1118-984-2000 |
| 90. Step Screw Comp.
021-099 1034-837-2100 all | 156. Bolt
021-150 0136-812-1100 |
| 91. Washer, Stop Screw
021-101 0301-078-1200 all | 156. Bolt
021-149 0136-812-1100 |
| 92. Coil Spring, Stop Screw
021-103 1300-112-2000 all | 169. Bracket
021-850 1190-A11-2000 |
| 100. Screw, Bracket
021-105 0136-804-1100 all | |
| 103. Main Air Jet - 99101-393 See pg. 206 | |
| 110. Collar
021-563 N704-05017 | |
| 122. O-Ring, Drain Bolt
021-109 W9351-19145 all | |
| 123. Drain Bolt
021-111 1018-804-2000 all | |

Sudco Velocity Stacks

Precision machined aluminum, velocity stacks for Keihin FCR Carburetors. Secure external screw mounting with a beautiful blue anodized finish.

Order by each



Length:	Color:	Order No:
15mm	Blue	020-252
"	Red	020-253
30mm	Blue	020-256
"	Red	020-257
"	Polished	020-258
50mm	Blue	020-260
"	Red	020-262
70mm	Blue	020-266
"	Red	020-268

Keihin FCR Tools

These tools allow access to allen screws from awkward angles which are not possible with traditional hex keys.

4mm Ball Hex Driver
3mm Ball Hex Driver

Order No. 950-211
950-210

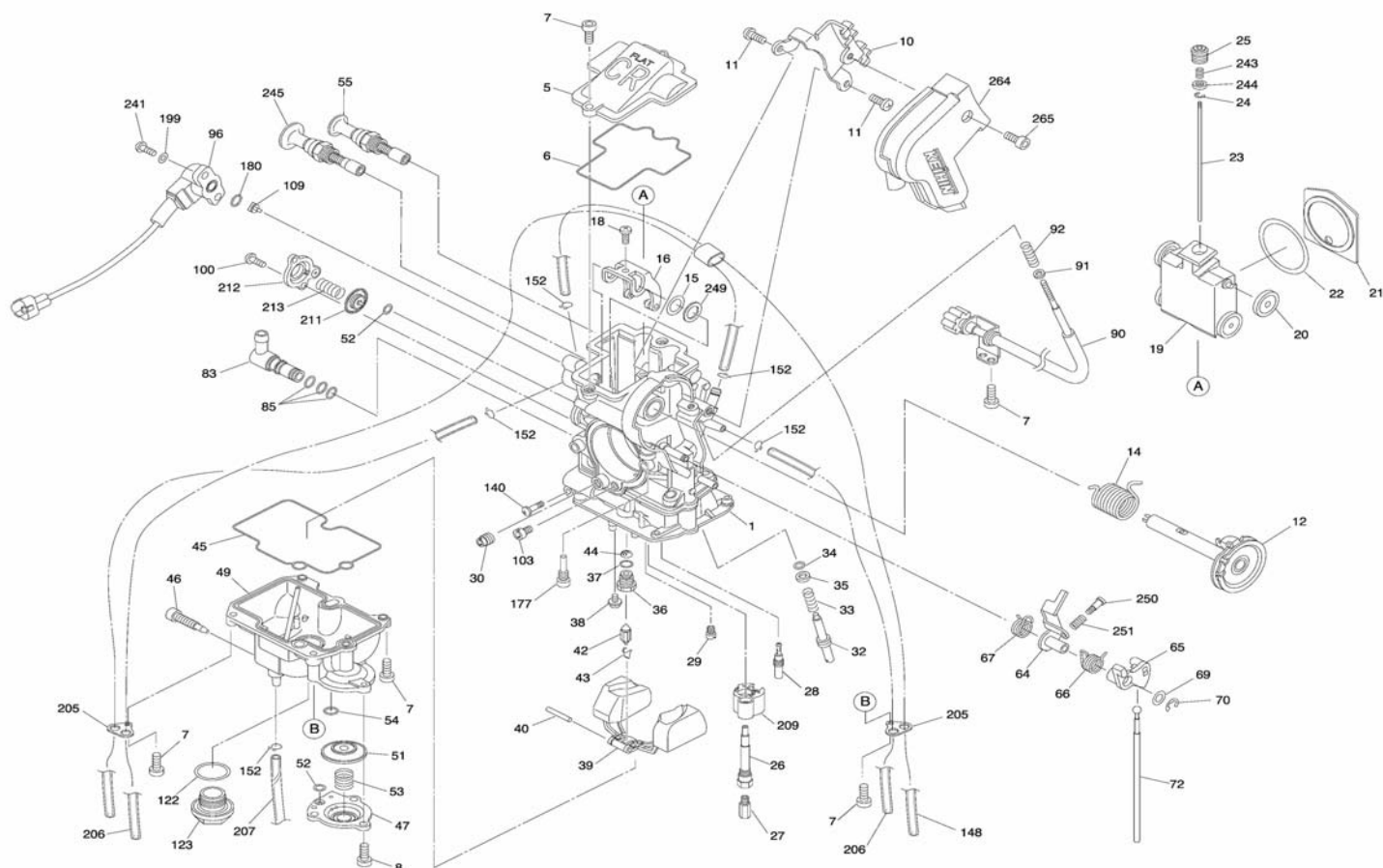


Keihin / Mikuni Main Jet Wrench

Order No. 002-401

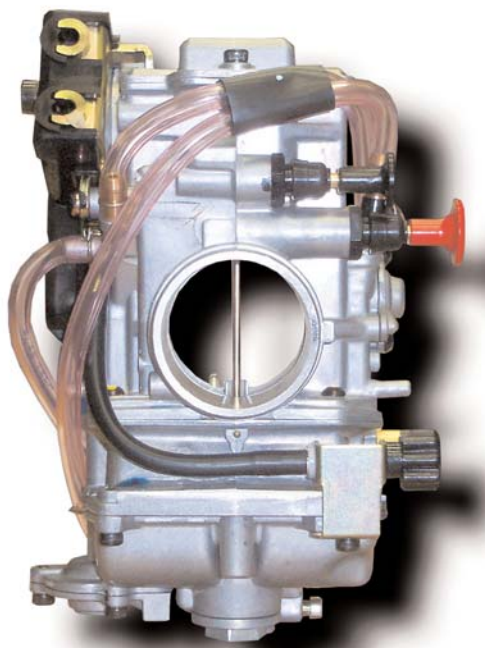


KEIHIN FCR-MX PARTS



016-927 39 FCR-MX air cut valve/hot start/TPS

Part Number	Description
016-915	37 FCR-MX
016-916	37 FCR-MX air cut valve/hot start
016-917	37 FCR-MX air cut valve/hot start/TPS
016-925	39 FCR-MX
016-926	39 FCR-MX air cut valve/hot start
016-927	39 FCR-MX air cut valve/hot start/TPS
016-935	41 FCR-MX
016-936	41 FCR-MX air cut valve/hot start
016-937	41 FCR-MX air cut valve/hot start/TPS



KEIHIN FCR-MX PARTS

Parts List

5.	Top Cover 021-710	1030-897-2000	all
6.	Gasket, Top Cover 021-711	1202-895-6000	all
7.	Screw M4x12 021-700	0136-806-1100	all
8.	Screw M4x8 021-010	0136-808-1100	all
10.	Bracket 021-712	1190-B40-2100	all
11.	Screw, 021-713	93500-05008-1H	all
12.	Throttle Shaft Comp. 5025-B35-2201		all
14.	Coil Spring 021-718	1305-A83-2000	
15.	Washer 021-018	0301-092-7000	all
16.	Link Arm Comp. 021-721	1061-831-2101	all
18.	Stop Screw 021-723	4110-825-1100	all
19.	Throttle Valve Comp. 021-320	N501-49C01	all
20.	Roller 021-027	1119-803-7002	all
21.	Vacuum Release Plate 021-725	1609-809-2100	all
22.	Seal 021-726	1099-817-6000	all
23.	Jet Needles N427-OC-n n n		See pg. 182
24.	Clip, Jet Needle 018-616	0403-802-1000	all
25.	Needle Set Screw 021-727	1421-802-2000	all
26.	Main Nozzle 021-728	1154-842-2000	all
27.	Main Jet 99101-357-n n n		See pg. 206
28.	Slow Jet N424-21-n n n		See pg. 207
30.	Slow Air Jet 99101-393-n n n (could be replaced with Slow Air Screw(see #129 & 130))		See pg. 183
32.	Pilot Screw 021-729	N446-26A00	all
33.	Coil Spring, Pilot Screw 021-041	1290-812-2001	all
34.	O-Ring, Pilot Screw 021-043	16075-KG8-9010-M1	all
35.	Washer, Pilot Screw 021-045	0301-803-2000	all
36.	Valve Seat N361-04-n n 1 Gravity Flow applications use 018-504 N. Valve		
	021-240	3.20	all
	021-241	3.40	"
	021-242	3.60	"
	021-243	3.80 Std. Singles	"
	021-244	4.00	"
37.	O-Ring, Valve Seat 021-047	16958-397-7710-M1	all
38.	Screw, Valve Seal 021-250	0118-806-1100	all
39.	Float Comp. 018-202	1052-856-2100	all
40.	Arm Pin 018-670	W9525-25250	all
42.	Float Valve Comp. 018-504	1062-814-2100	all
43.	Clip, Float Valve 018-674	0405-019-1000	all
44.	Fuel Screen 021-730	2009-811-2100	all
45.	Packing, Float Bowl 021-731	1202-896-6000	all
46.	Drain Screw 021-733	1198-810-2002	all
47.	Cover, Accelerator Pump 021-057	1230-826-2002	all
49.	Float Bowl 021-734	1050-948-2101	all
51.	Diaphragm Comp. 021-735	1201-858-2700	all
52.	U-Ring 021-067	W9353-36000	all
53.	Coil Spring, Accelerator Pump 021-069	1300-142-2000	all
54.	O-Ring, Accelerator Pump 021-071	W9351-19058	all
55.	Starterr Valve Comp. 021-737	1166-844-2100	all
64.	Link Lever Comp. 021-739	1100-914-2100	all
65.	Link Lever 021-740	1100-915-7000	all
66.	Coil Spring #1 021-719	1305-B01-2001	all
67.	Coil Spring #2 021-717	1305-A82-2000	all
69.	Washer 021-741	W1795-223-9900	all
70.	E-Clip 021-742	16179-676-3000	all
72.	Rod 021-743	1458-858-2001	all
83.	Fuel Joint 021-744	1074-892-2100	all

KEIHIN FCR-MX PARTS

85.	O-Ring, Fuel Joint 018-755	W9351-13057	all
90.	Step Screw Comp. 021-745	1034-815-4500	all
91.	Washer, Stop Screw 021-101	0301-078-1200	all
92.	Coil Spring, Stop Screw 021-103	1300-112-2000	all
96.	Throttle Position Sensor(TPS) 021-746	1614-862-2100	all
100.	Screw 021-105	0136-804-1100	all
103.	Main Air Jet - 99101-393		See pg. 206
110.	Collar 021-747	16145-MZ2-7800	all
122.	O-Ring 018-664	16173-001-0040	all
123.	Drain Bolt 018-128	16162-ND4-7511-M1	all
140.	Scrw 021-749	0110-804-1200	all
148.	Vent Hose 021-751	0803-884-0100	all
152.	Hose Clip 018-098	W9535-35000	all
177.	Stop Screw 021-722	1034-905-2000	all
180.	O-Ring 021-732	16978-ZB9-0050	all
199.	Washer 021-753	0301-261-6G5	all
205.	Hose Retainer 018-505	16179-KZ4-6900	all
206.	Vent Hose 021-7520	0803-878-0000	all
207.	Vent Hose 021-752	95003-07033-31	all
209.	Buffer Plate 021-754	1157-812-7000	all
211.	Diaphragm Comp. 0021-736	W1470-MW0-7500	all
212.	Cover 021-755	1230-850-2000	all
213.	Coil Spring 021-715	1290-A19-2000	all
241.	Screw (Torx) 021-757	0137-261-36G5	all
243.	Coil Spring 021-716	1290-A65-200	all
244.	Collar 021-748	1118-B36-20000	all
245.	Starter Valve 021-738	1166-845-2100	all
249.	Washer 021-758	W1795-164-9900	all
250.	Stop Screw 021-724	16124-KR3-6010-M1	all
251.	Coil Spring 021-720	16053-KT7-0030	all
264.	Cover 021-756	1230-869-7001	all
265.	Cover Screw 021-759	0136-839-1100	all

FCR AIR FILTERS

Note: O-rings not included



Sudco / FCR Air Filter Applications

Make/Model	Year	FCR Carb (mm)	Air Filter Adapter (Sold Each)	Qty. Req'd	K&N Air Filter (comments)	Qty. Req'd
Ducati						
750, 900SS	91-99	39,41	021-212	2	005-192 fits stock airbox	1
M750, M900	95-99	39,41	021-212	2	005-192 fits stock airbox	1
Honda						
XR600	89-99	39,41	021-213	1	005-365 fits stock airbox	1
CBR600 CBR600F2	87-94	32,33	021-211	4	005-178 005-179	2 each
CBR600F2	91-94	32,33	021-211	4	005-187 dual filter kit	1
CBR600F2 CBR600F3	91-98	35	021-212	4	005-174 dual filter kit	1
CBR900RR CBR1100XX	94-99	39-41	021-212	4	005-174 dual filter kit	1
Kawasaki						
ZX6D, ZX6E	88-97	35	021-212	4	005-174 dual filter kit	1
ZX6R	95-97	35	021-214 ram air adapter	4	005-395 fits stock airbox	1
ZX7R	96-99	39,41	021-214 ram air adapter	4	(call for part) fits stock airbox	1
ZX9R	94-99	39,41	021-214 ram air adapter	4	005-349 fits stock airbox	1
ZX10	88-90	37,39,41	021-212	4	005-174 dual filter kit	1
ZX11C	90-93	37,39,41	021-214 ram air adapter	4	005-388 fits stock airbox	1
ZX11D	93-99	37,39,41	021-214 ram air adapter	4	005-348 fits stock airbox	1
ZX11 (race cars only)	90-99	37,39,41	021-212	4	005-174 dual filter kit	1
ZRX1100		39,41	021-216	4	005-184 dual filter kit	1
KTM						
(LC4) 400RXC	ALL	39,41	021-212 airbox adapter	1	(use OEM filter)	
620RXC	ALL	39,41	021-212 airbox adapter	1	(use OEM filter)	
620DUKE	ALL	39,41	021-212	1	(use OEM filter)	
Moto Guzzi						
Sport1100 (carbureted models)	94-97	39,41	021-600	2	(use OEM filter)	

FCR AIR FILTERS

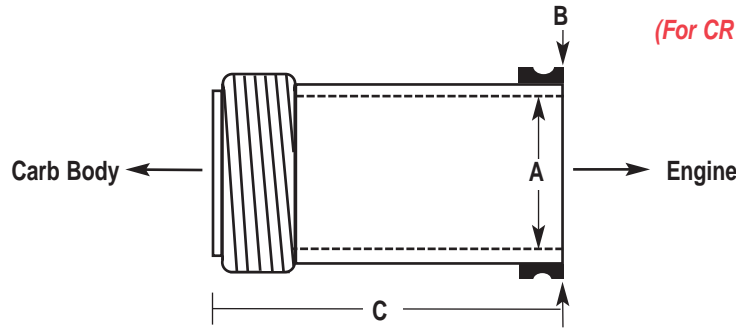
Make/Model	Year	FCR Carb (mm)	Air Filter Adapter	Qty. Req'd	K&N Air Filter (comments)	Qty. Req'd
Suzuki						
SV650	ALL	39,41	021-215	2	005-639 fits stock airbox	1
			021-216	2	005-116	2
GSXR750 GSXR1100 (air-cooled)	86-92	39,41	021-216	4	005-184 dual filter kit	1
GSXR600 GSXR750 (liquid-cooled)	93-95	37,39,41	021-216	4	005-340 dual filter kit	1
GSXR600, GSXR750	96-97	35,39,41	021-215 ram air adapter	4	005-345 fits stock airbox	1
GSXR1100 (liquid-cooled)	93-97	37,39,41	021-216	4	005-340 dual filter kit	1
GSF1200BANDIT	97	39,41	021-216	4	005-184 dual filter kit	1
Triumph						
DOHC Triples	94-96	39	021-212	3	005-188	
Yamaha						
FZR400	88-89	32,33	021-211	4	005-170 005-171	2 each 2 each
FZR600	89-96	32,33	021-211	4	005-170 005-171	2 each
YZF600	94-99	33	021-211	4	005-170 005-171	2 each
YZF750	94-97	39,41	021-216	4	005-340 dual filter kit	1
"TDM850, TRX850"	ALL	39,41	021-216	2	005-598 fits stock airbox	1
FZR1000	87-96	37,39,41	021-216	4	005-340 dual filter kit	1
	87-88	37,39,41	021-212	4	005-116 single filters	4
	89-97	37,39,41	021-212	4	005-340 dual filter kit	1
YZF1000	97	39,41	021-215 fits stock airbox	4	005-585	1
YZF1000R1	98-99	39,41	021-215 fits stock airbox	4	005-637	1



Air Cleaner Adapter

Sudco FCR Air Cleaner / Airbox Adapters

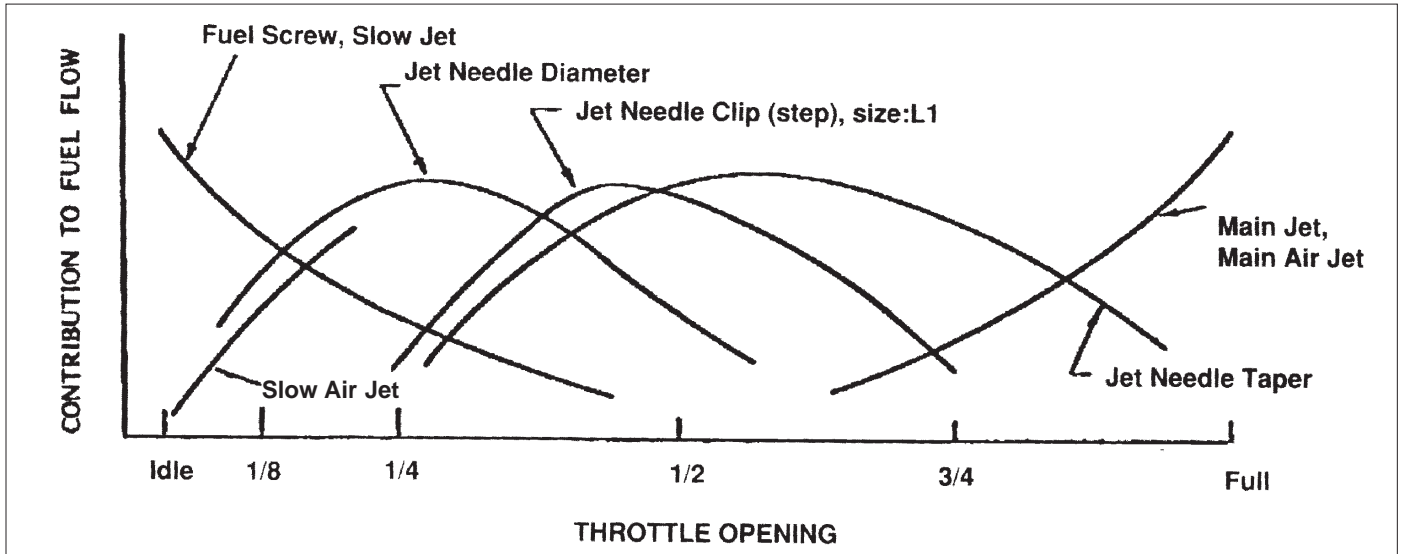
Carburetor Size (mm)	Filter Mounting Flange Dimension	Order No.
FCR 28-33	2-1/4" (57mm)	021-211
FCR 35-41	2-1/4" (57mm)	021-213
	2-3/8" (60.3mm)	021-216
	2-7/16" (62 mm)	021-212
	2-11/16" (68mm)	021-215
	2 bolts to Kawasaki airbox	021-214
	Threaded male to Moto Guzzi	021-600
	FCR to H.D. CV 3 bolt	021-601
	Big Twin, 883/1200 Sportster	021-601A
	58.8mm	021-216A



(For CR Special, please see pg. 166)

Application - Year	ID Mark	Spigot O.D. "B"	Port I.D. "A"	Overall Length "C"	Order No.
FCR 35					
Raptor		40mm	35mm	20mm	020-419
FCR 37					
ZX7 '89-'90	30A	46mm	38.8mm	19mm	020-438
ZX10 '87-'88	23A	42mm	36.8mm	26mm	020-433
ZX11C '89-'92	23B	47mm	40.8mm	26mm	020-434
FZR1000 '87-'88	20A	44mm	37.65mm	40mm	020-430
FZR1000 '89-'96	20B	46mm	37.65mm	40mm	020-435
FCR 39					
BMW R100	872	52mm	40.01mm	30mm	020-457
Ducati (dual carb)	21D	46mm	38mm	22mm	020-422
Ducati (single carb)	27A	44.5mm	39.65mm	37mm	020-424
Hawk GT '88-'89	26B	44mm	39.65mm	31mm	
ZX7 '91-'95	862	48mm	40.3mm	18.8mm	020-460
ZX10 '87-'88	24A	42mm	36.8mm	26mm	020-440
ZX11C, ZX9R '94-'97	25A	47mm	40.8mm	26mm	020-441
ZX11D '93-'98	25B	47mm	40.8mm	46mm	020-423
GSX-R750 '91-'95	21C	46mm	39.65mm	31mm	020-451
GSX-R750 '96	21G	46mm	39.5mm	22mm	020-446
GSX-R1100 '91-'98	868	41.50mm	37.50mm	31mm	020-455
RF900 all	26C	42mm	36mm	36mm	
YZF750 '93-'98	21A	46mm	38mm	40mm	020-421
FZR1000 '89-'96	21B	46mm	37.65mm	40mm	020-445
FZR1000 '87-'88	26A	44mm	37.65mm	40mm	020-442
FZR750 (0W01)	875	46mm	42mm	40mm	020-450
SRX6 all	876	38mm	33mm	24mm	020-458
FCR 41					
Ducati (dual carb)	33E	46mm	38mm	22mm	
Ducati (single carb)	866	44.5mm	39mm	37mm	020-454
Harley Davidson	883	45mm	40.5mm	20mm	020-459
Hawk GT '88-'89	865	44mm	39mm	31mm	
ZX-7		47mm		20mm	020-448
ZX7 '91-'95, XR600	864	48mm	41.65mm	18.8mm	020-453
ZX11C, ZX9R '94-'97	32A	47mm	40.8mm	26mm	020-439
ZX11D '93-'98	32B	47mm	40.8mm	46mm	020-425
Goose	33F	46mm	40mm	32mm	020-427
GSX-R750 '96	33H	46mm	39.5mm	22mm	020-447
GSX-R750 '91-'95	33B	46mm	40mm	31mm	020-452
GSX-R1100 '91-'98	869	41.5mm	37.5mm	31mm	020-456
FZR1000 '89-'96	33A	46mm	37.5mm	40mm	020-426
R1	33J	46mm	40mm	35.5mm	

Functional Range of Keihin Carburetor Tuning Components



Each calibration part controls fuel flow at different throttle openings. The diagram above gives an idea which calibration part is the key at different throttle openings.

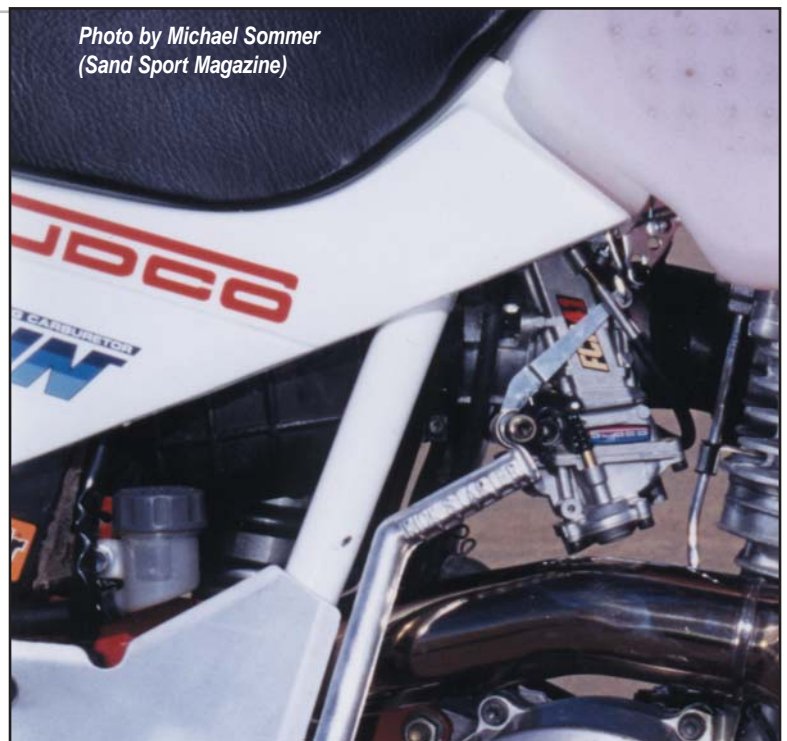
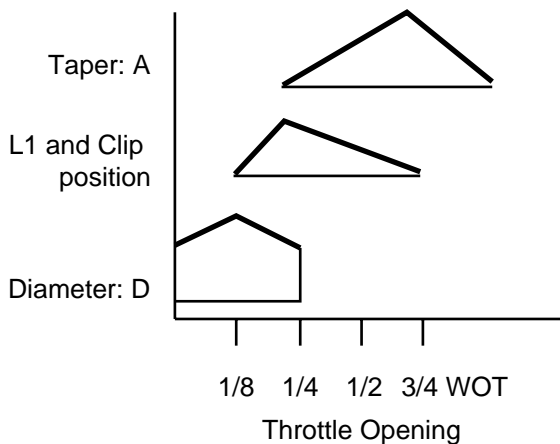
Function of Carburetor Components

	Component	To Richen	Recommended Increment Change
THROTTLE CLOSED ↑ ↓ FULL THROTTLE	Fuel Screw	turn out to richen	1/4 turn
	Slow Jet (controls fuel)	use larger number	1 size (See chart on pg.185)
	Slow Air Jet (controls air)	use smaller number	1 size or 1/4 turn (See chart on pg.161)
	Jet Needle	use thinner needle	See Jet Needle selection on pg.160
	Main Jet	use larger number	2 sizes (See chart on pg.184)
	Main Air Jet	use smaller number	(by 10's) i.e. 180,190, 200... (See chart on pg.184)

NOTE:

Simply change the clip position, lowering or raising will allow you to make adjustments. A shorter needle will be richer and longer needle will be leaner. The mixture richens when the jet needle is raised and leans when lowered.

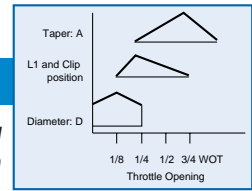
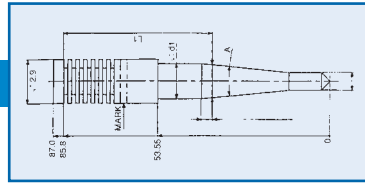
Contribution of Jet Needle



Eric Brown's record holding FCR equipped XR600

KEIHIN FCR NEEDLES

N427-90 FCR 28-33mm

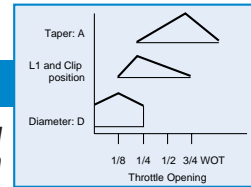
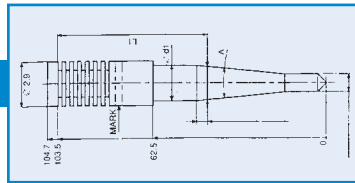


E taper
T L1
V diameter

Operations affected by needle selection

		Rich ←		1/8 to 1/4 Throttle						→ Lean			
				Diameter (d-1) mm									
				M=2.715	N=2.725	P=2.735	R=2.755	S=2.765	T=2.775	U=2.785	V=2.795		
Lean ↑	E 1° 0'	B=58.70 K=62.30 T=65.90	RICH				EBR/017-199 EKR/017-202 ETR/017-205			EBT/017-200 EKT/017-203 ETT/017-207		EBV/017-201 EKV/017-204 ETV/017-209	
			1/4 Throttle										
			LEAN										
1/4 to 3/4 Throttle	F 1° 15'	B=58.70 K=62.30 T=65.90	RICH				FKR/017-212 FTR/017-215			FBT/017-210 FKT/017-213 FTT/017-217		FBV/017-211 FKV/017-214 FTV/017-219	
			1/4 Throttle										
			LEAN										
Rich ↓	G 1° 30'	B=58.70 K=62.30 T=65.90	RICH	GBM/017-220 GKM/017-225		GBP/017-221 GKP/017-226	GKR/017-227 GTR/017-230			GTT/017-232		GTV/017-234	
			1/4 Throttle										
			LEAN										

N427-0C FCR 35-41mm



E taper
M L1
P diameter

Operations affected by needle selection

		Rich ←		1/8 to 1/4 Throttle												→ Lean	
				Diameter (d-1) mm													
				H=2.675	K=2.695	L=2.705	M=2.715	N=2.725	P=2.735	Q=2.745	R=2.755	S=2.765	T=2.775	U=2.785	V=2.795	W=2.805	
Lean ↑	D 0° 45'	B=74.65 F=76.45 H=77.35 K=78.25 L=78.70 M=79.15 V=82.75	RICH		DBK/017-276 DFK/017-283		DBM/017-277 DFM/017-284	DFN/017-285	DFP/017-286		DBR/017-279 DFR/017-287		DBT/017-280 DFT/017-288				
			1/4 Throttle														
			LEAN		DML/017-290	DMM/017-291	DMN/017-292	DMP/017-294	DVQ/017-301	DMR/017-296 DVR/017-302	DMS/017-297 DVS/017-303	DMT/017-298		DMV/017-299			
1/4 to 3/4 Throttle	E 1° 0'	B=74.65 F=76.45 H=77.35 K=78.25 L=78.70 M=79.15 V=82.75	RICH	EFH/017-375	EBK/017-361 EFK/017-376	EFL/017-378	EFM/017-379	EFN/017-380	EFP/017-366		EBR/017-362 EFR/017-367 EHR/017-247		EBT/017-363 EFT/017-368		EBV/017-364 EFV/017-369		
			1/4 Throttle														
			LEAN	EMK/017-259	EML/017-260	EMM/017-261	EMN/017-262	EMP/017-264	ELQ/017-249 EVQ/017-273	EMR/017-266 EVR/017-274	ELS/017-250 EVS/017-275	ELT/017-251 EMT/017-268	EMU/017-269	ELV/017-253 EMV/017-270	ELW/017-254 EMW/017-272		
1/4 to 3/4 Throttle	F 1° 15'	B=74.65 F=76.45 H=77.35 K=78.25 L=78.70 M=79.15	RICH	FBH/017-384	FBK/017-385		FBM/017-308		FBP/017-310		FBR/017-387		FBT/017-388		FBV/017-386		
			1/4 Throttle														
			LEAN	FMK/017-319	FML/017-320		FHM/017-394 FHN/017-315 FKN/017-389	FHP/017-395 FKP/017-390		FHR/017-397 FKR/017-391		FMT/017-326	FHT/017-316	FMV/017-330	FHW/017-317		
Rich ↓	G 1° 30'	B=74.65 F=76.45 H=77.35 J=77.80 K=78.25 L=78.70 M=79.15	RICH			GJM/017-348		GFP/017-337		GFR/017-338		GFT/017-339		GFV/017-340			
			1/4 Throttle														
			LEAN	GML/017-350	GMM/017-351	GNN/017-352	GLN/017-344 GLP/017-345	GMP/017-354	GMR/017-356	GMT/017-358							

KEIHIN FCR SLOW AIR JETS

99101-ZF5-□ □ □ [99101-124-□ □ □]

019-401	#45	019-416	#82	019-431	#120
019-402	#48	019-417	#85	019-432	#122
019-403	#50	019-418	#88	019-433	#125
019-404	#52	019-419	#90	019-434	#128
019-405	#55	019-420	#92	019-435	#130
019-406	#58	019-421	#95	019-436	#132
019-407	#60	019-422	#98	019-437	#135
019-408	#62	019-423	#100	019-438	#138
019-409	#65	019-424	#102	019-439	#140
019-410	#68	019-425	#105	019-440	#142
019-411	#70	019-426	#108	019-441	#145
019-412	#72	019-427	#110	019-442	#148
019-413	#75	019-428	#112	019-443	#150
019-414	#78	019-429	#115		
019-415	#80	019-430	#118		

Keihin FCR Slow Air Screw Set Conversion

(Replaces Slow Air Jet)

Out: Lean/In: Rich Air Screw	Slow Air Jet
1/4 turn out	#45
3/8	#55
1/2	#65
5/8	#75
3/4	#85
7/8	#95
1	#100
1-1/8	#110
1-1/4	#120
1-1/2	#125
1-3/4	#130
2	#135
2-1/4	#140
2-1/2	#145
2-3/4	#150
3	#155

021-230
021-235

1014-817-2000 Screw
16052-KM4-0040 Spring

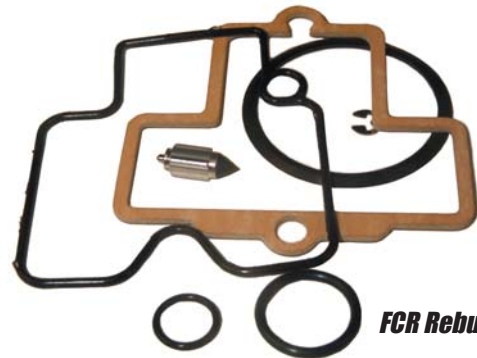


Methanol Conversion Kit

FCR Rebuild Kits

Carburetor rebuild kits for Keihin Flat-CR Smoothbores assembled from genuine Keihin components. Sudco's rebuild kits contain everything necessary to perform routine carburetor services. Kits are sold per each carb body. Order one or more kits depending on the number of carbs on the motorcycle.

Application		Order No.
Flat CR-Downdraft	32-33mm	018-865
	35-39mm	018-866
	41mm	018-867
Flat CR-Horizontal	35-39mm	018-870
	41mm	018-871



FCR Rebuild Kit

Methanol Conversion Kit

The Sudco Methanol Kit includes all the necessary components: main jets, needles, needle valves, etc.

All the jettings required to convert your Keihin Flatside FCR carburetor to methanol usage.

018-859
018-858

FCR 35-41
FCR 32-33