

RECONNECTIVE HEALING EXPERIMENTS 2008 - 2009

CONTENTS

Organization of the experiment	2
EPC/GDV Technique	2
Electrophotonic Sensor for remote detecting of human emotions	3
EXPERIMENTAL RESULTS	5
DATA OF PARTICIPANTS ENERGY FIELD	5
Los Angeles (USA) September 13, 14, 2008.	5
St. Petersburg (Russia) September 15, 16, 2009.	6
Los Angeles (USA), September – October 2009	7
Amsterdam, Holland, November 12 – 17, 2009	11
DISCUSSION.....	15
DATA OF ELECTROPHOTONIC SENSOR	17
Los Angeles, September 18-20, 2008.....	17
Los Angeles, September – October 2009	22
Amsterdam, November 13 – 15 2009.....	32
Sedona, December 4 – 6, 2009	39
DISCUSSION.....	43
SEMINAR WATER STUDY: DAY 1 & 2.....	46
RECONNECTIVE HEALING WATER STUDY	47
DISCUSSION.....	49
CONCLUSIONS	49
References	50

Organization of the experiment

During the Reconnective workshop two types of measurements have been conducted:

- 1) Measuring of participants' energy with EPC instrument (www.ktispb.ru) before and after the workshop.
- 2) Monitoring of Space during the workshop with the Electrophotonic Sensor. (www.korotkov.org).

Measurements and data processing were conducted and processed by Krishna Madappa, Dr. Konstantin Korotkov and Dmitrii Orlov.

EPC/GDV Technique

Electrophotonic is a promising direction in the construction of new non-invasive automatic procedures that assess the body's condition during minimum interventions into vital functions. The diagnosis of predisposition to some diseases, the choice of the most adequate treatment policy and the monitoring of human bioresponses to various environmental factors are important aspects in preventive health care services. Electrophotonic method investigates human functional states, by assessing electro-optical parameters of the skin that are based on the registration of physical processes emerging from electron components of tissue conductivity. This technique allows one to capture the image of Electrophotonic impulse around human fingertips and extract information about sympathetic and parasympathetic activities. The quantitative difference in parameters between two systems, which is equal to autonomic tone, and called activation coefficient can be used as the indirect measure for cognitive function. Integral area of Electrophotonic impulse is a presentation of calculated fractality level and consistency of the captured image. Integral entropy calculated as a Shannon information entropyⁱ is a measure of the deviation from the functional physiological and psycho emotional balance. Thus, Electrophotonic approach can then be used as a model to bridge the gaps in health disparities by creating an innovative approach to address health aspects in real time measurements, which will improve rural health outcomes.

The EPC/GDV camera is presently the state-of-the-art in bioelectrographyⁱⁱ. It utilizes a high frequency (1024 Hz), high-voltage (10 kV) input to the finger (or other object to be measured), which is placed on the electrified glass lens of the EPC camera. Because the electrical current applied to the body is very low, most human subjects do not experience any sensation when exposing their fingertip to the camera. In practice, the applied electric field is pulsed on and off every 10 microseconds, and the fingertip is exposed for only 0.5 seconds. This causes a corona discharge of light-emitting plasma to stream outward from the fingertip. The light emitted from the finger is detected directly by a CCD (charge-coupled detector), which is the state-of-the-art in scientific instruments such as telescopes to measure extremely low-level light. The signal from the CCD is sent directly to a computer, and software analysis is done to calculate a variety of parameters that characterize the pattern of light emitted, including brightness, total area, fractality, and density. The software can also provide color enhancement to enable subtle features such as intensity variations of the image to be perceived. The underlying principle of camera operation is similar to the well-known Kirlian effectⁱⁱⁱ but modern technology allows reproducible stable data with quantitative computer analysis.

Purposeful investigations allowed the discovery of the parameters that are optimal from the point of obtaining critical information on the biological object's state with the minimum of invasiveness. These findings are described in more than 200 research works in the international scientific literature, 15 patents, 7 books in English, French, German, Italian, Russian, and Spanish.

This biophysical concept of the principles of GDV measurements is based on the ideas of quantum biophysics^{iv}. This is a further development of well-known ideas of A. Szent-Györgyi concerning the transfer of electron-excited states along the chains of molecular protein complexes. The EPC technique measures the level of functional energy stored by the particular systems of an organism. This level is defined by the power of the electron-excited states and the character of their transport along the chains of albumin molecules. The level of functional energy is correlated with health status, but it is only one of many of the components that define health. It works together with genetic predisposition, psycho-emotional states, environmental loading (food, water, air, ecology) and other factors. This approach may be associated with the oriental notion of the energy transfer along meridians.

EPC/GDV bioelectrographic systems have had practical applications in the several main areas, such as medicine^{vivii}, sport^{viii}, study of liquids^{ix}, water^x and materials^{xi}.

In assessing human subjects, the EPC-grams (emission patterns after computer processing) of all ten fingers are made and analyzed. All 10 EPC-grams from the fingers then undergo analysis via another software program creating the model of Energy Field around the body and the diagrams showing the energy distribution in the various organ systems. This is based on the map correlating the human fingers with different systems and organs of the body in accordance with Traditional Chinese Medicine (TCM) approachⁱ.

The variance in the reproducibility of the GDV patterns of emission and the calculated diagrams is about 10% for human fingers, and about 3% for materials^{xii}. The 2-3% variability pertaining to materials testing is considered to be random error. However, the 10% variation with respect to human fingers reflects not only standard error, but the fluctuations in the energy dynamics of a living being, i.e., the "flicker of the flame of life." As it is shown in numerous studies, the pattern of emission, which determines the relative energy distribution in the person's organs, remains constant from day to day. That is, each adult displays an "energy pattern signature" in this method of testing.

Scientific research in GDV carried out in medicine revealed correlations of GDV parameters with other measurable characteristics of the organism^{xiii}. Several correlations have been found: first of all, with age; with the level of blood pressure and blood formula; with cardio variability indices, and others. Reliable statistical differences of GDV parameters of groups of healthy individuals and groups of patients with various nosologies have been observed.

Electrophotonic Sensor for remote detecting human emotions

New "Electrophotonic Sensor" has been developed based on EPC technology which allows to record the changes of the environmental parameters in the process of natural events such as sunset, sunrise or sun eclipse. At the same time Sensor parameters change under the influence of human emotions or musical performance. Measurements conducted during religious ceremonies, yoga meditations, public lectures, musical performances demonstrated that the signal of the Sensor statistically significantly changes during measurements and these changes are correlated with the course of event^{xiv}.

For calibration the EPC/GDV instrument we are using titanium cylinder 15 mm (0.6 inch) in diameter connected to the grounding jack of the instrument. (Titanium is very stable and does not oxidize in gaseous discharge). The principle of the EPI/GDV instrument was being used in the "Electrophotonic Sensor". The principles of operations are as follows (fig.1).

For detection emotions cylinder 1 is connected to the special antenna 2 designed to create non-homogenous electromagnetic field. Generator 3 produces impulses of voltage 7 kV amplitude, 10 mcs duration, coming with 1 kHz frequency in 0.5 s packs every 5 s. Voltage is applied to the transparent conductive layer 4 on the quartz electrode 5. Due to the bias current from antenna 2 a gaseous discharge 7 between cylinder 1 and electrode 5 is generated. The glow of the discharge is detected by a special TV system 6 and after digitizing is kept as series of image files on a memory stick 8 connected to the instrument. Instrument runs on 12 V rechargeable batteries 9 for more than 100 hours in automatic mode. Files are kept in memory with time marks, which allows correlate parameters after data processing with time sequence of the events under study.

From physical point of view this device measures changes in the first Townsend air ionization coefficient as a function of environmental changes. At the same time bias current in the electrical chain depends on the capacitance of space between antenna 2 and electroconductive subjects around. If we replace antenna 2 with grounded capacitance, we can experimentally measure the dependence of the glow area of metal cylinder from capacitance, which is demonstrated at Fig.2. Oblique section of this graph correlates to the most sensitive parameters of the instrument which may be regulated by the amplitude of the applied voltage.

Emotions are related to the activity of the parasympathetic division of the autonomic nervous system, which changes blood microcirculation, perspiration, sweating, and other functions of the body, resulting in the changes of the overall conductivity of the body and the conductivity of acupuncture points in particular. So the presence in the vicinity of the instrument of the emotional people may change the conductivity of space and, hence, the signal of the sensor. At the same time in laboratory conditions at night without presence of people variability of data during 6 hours was at the level 0.5 – 1%. Before the measurement instrument should be "warmed up" by operating for 30-50 minutes with cylinder connected to the grounding jack of the instrument.

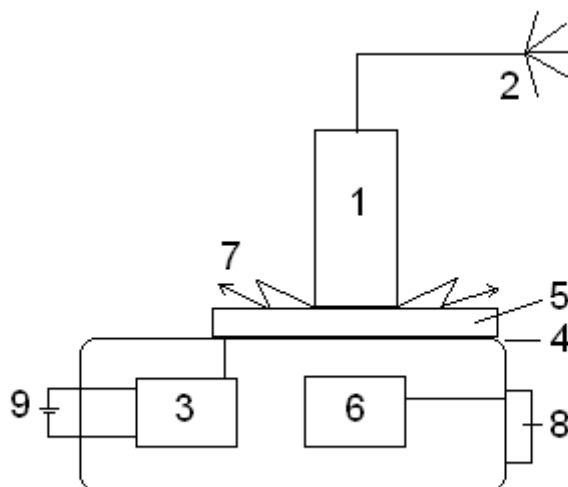


Fig.1. The schematic design of the "Electrophotonic Sensor". 1 – titanium cylinder; 2 - special antenna; 3 - impulses generator; 4 - transparent conductive layer; 5 - quartz

electrode; 6 - TV system; 7 - gaseous discharge; 8 - memory stick; 9 - 12 V rechargeable batteries.

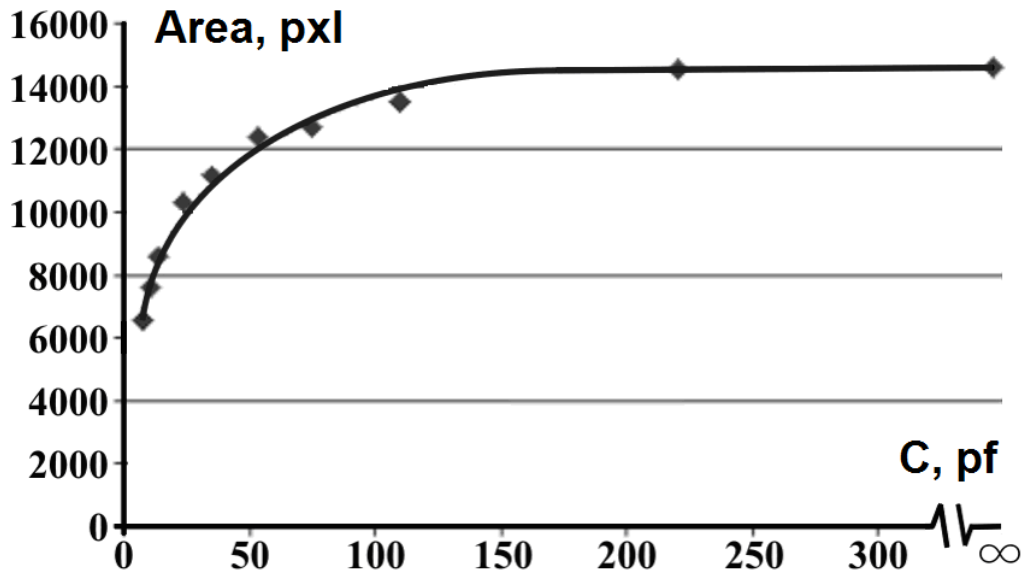


Fig.2. Experimental dependence of the glow area of metal cylinder from capacitance.

EXPERIMENTAL RESULTS

DATA OF PARTICIPANTS ENERGY FIELD

Participant were measured in 2008-2009 during several Reconnective sessions before and after the workshop. Several groups of participants were selected:

- Newcomers;
- Experienced practitioners;
- Trainers;
- Top-level trainers.

Data was processed in several modes.

Percentage of changes for the parameters was calculated in accordance with a formula:

$$(S_{after} - S_{initial})/S_{initial} * 100\%$$

Area is associated with the power of human average Energy Field.

Los Angeles (USA) September 13, 14, 2008.

23 people took part in the study, 16 women and 7 men, age 32 +/- 10.

Averaged %% of changes in the Energy Field in the group of 23 people was 17%. About 14% of people had positive changes from 10% to 50%, 10% of people had positive changes less than 10%, and 76% of people had no changes in the Area of their Energy Field.

St. Petersburg (Russia) September 15, 16, 2009.

Reconnective Healing workshop by Erick Pearl and Dough DeVito took place in St. Petersburg, Russia September 15 and 16. Nine people took part in the workshop (1 woman and 8 men, age 18 – 41). All participants had no idea about Reconnective Healing before.

Processing demonstrated statistically significant increase and balance of Energy Field for the group with 95% probability (See Tables 1 and 2). Fig.3 present results of averaged on the group data, while fig.4 demonstrate data for all participants.

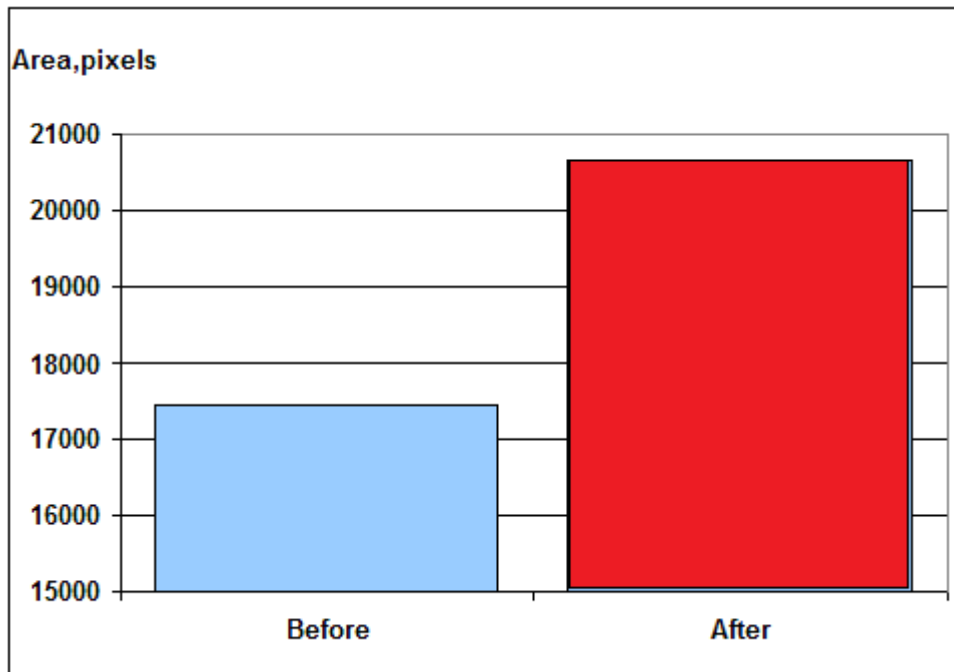


Fig. 3. Area of Energy Field before and after the workshop averaged on the group of 9 people.

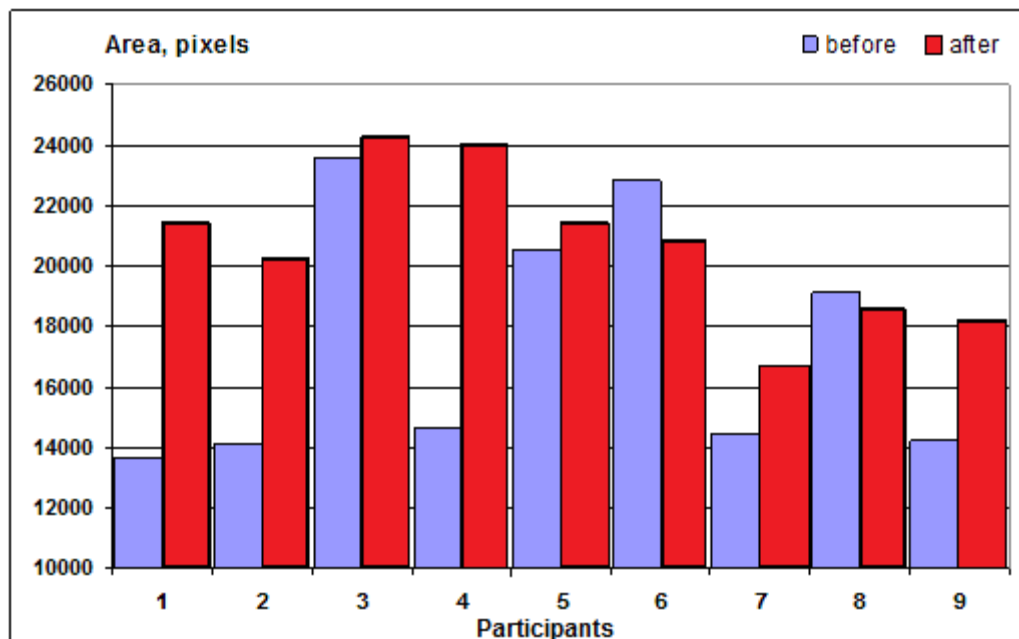


Fig. 4. Area of Energy Field before and after the workshop for all participants.

Table 1. Mann-Whitney statistical processing of data for the Area of Energy Field.

Participants	Before	Score	After	Score
1	13654	1	21446	13
2	14119	2	20250	10
3	23562	16	24283	18
4	14659	5	24053	17
5	20493	11	21488	14
6	22792	15	20867	12
7	14445	4	16684	6
8	19097	9	18603	8
9	14203	3	18245	7
	T=	66	T=	105

Table 2. Mann-Whitney statistical processing of data for the Symmetry of Energy Field.

Participants	Before	Score	After	Score
1	64.40%	1	71.80%	6
2	65.50%	2	74.70%	7
3	67.10%	3	82.70%	8
4	68.90%	4	83.90%	9
5	69.40%	5	85.00%	11
6	84.00%	10	85.40%	12
7	86.80%	13	89.20%	16
8	87.10%	14	89.60%	17
9	87.30%	15	92.00%	18
	T =	67	T =	104

Los Angeles (USA), September – October 2009

Results are presented depending on the participants' category.

Advanced Practitioners

9 people took part in the study in the first day and 12 people in the second day, 7 women and 5 men, age 32 +/- 10.

Results of Energy Field measurements during two days are presented at Fig.5.

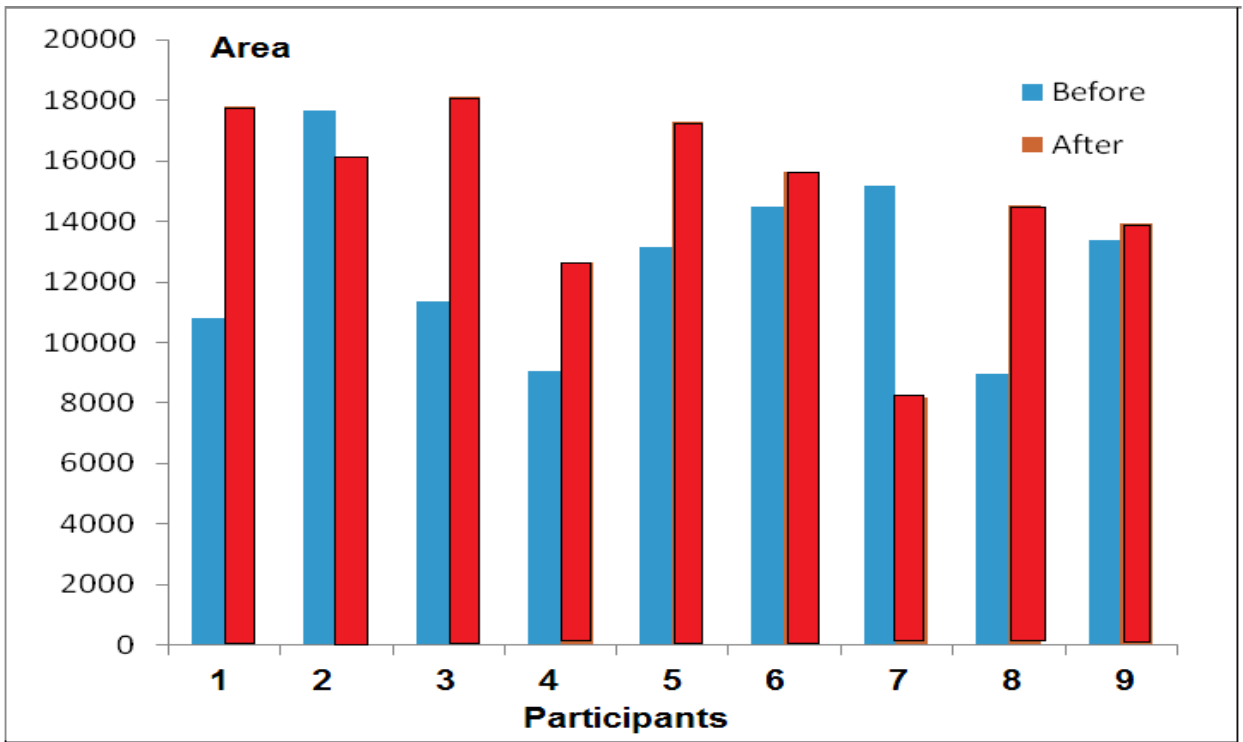


Fig 5-1. EF for Advanced Practitioners before and after session in the first day.

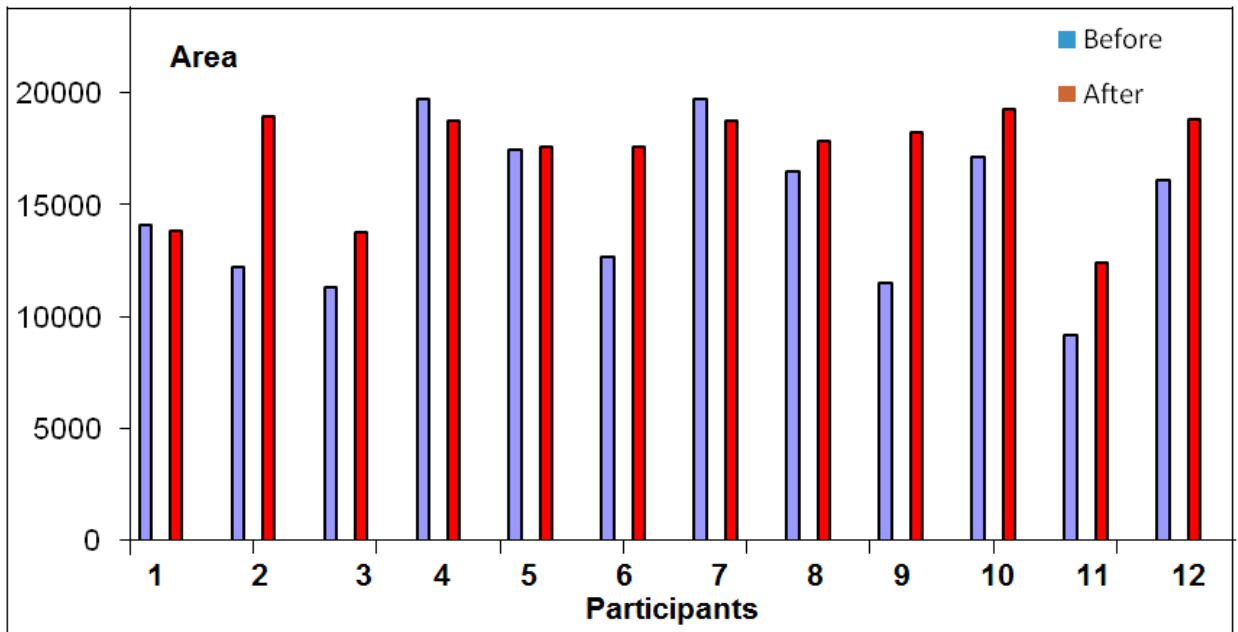


Fig 5-2. EF for Advanced Practitioners before and after session in the second day.

As we see from the graphs in the first day:

for 7 people EF increased;

for 2 people EF decreased;

and in the second day:

for 8 people EF increased;

for 2 people EF had no changes;

for 2 people EF decreased;

For the first day this increase was statistically significant with $p < 0.05$ (see Table 3).

Table 3. Mann-Whitney statistical analysis for AP (fig. 5-1).

Participants	Before	Score	After	Score
1	8958	2	8163	1
2	9070	3	12661	6
3	10815	4	13951	9
4	11340	5	14513	11
5	13150	7	15646	13
6	13359	8	16116	14
7	14489	10	17290	15
8	15155	12	17814	17
9	17673	16	18103	18
	T =	67	T =	104

Instructors

3 people took part in the study, 2 women and 1 man, age 32 +/- 10.

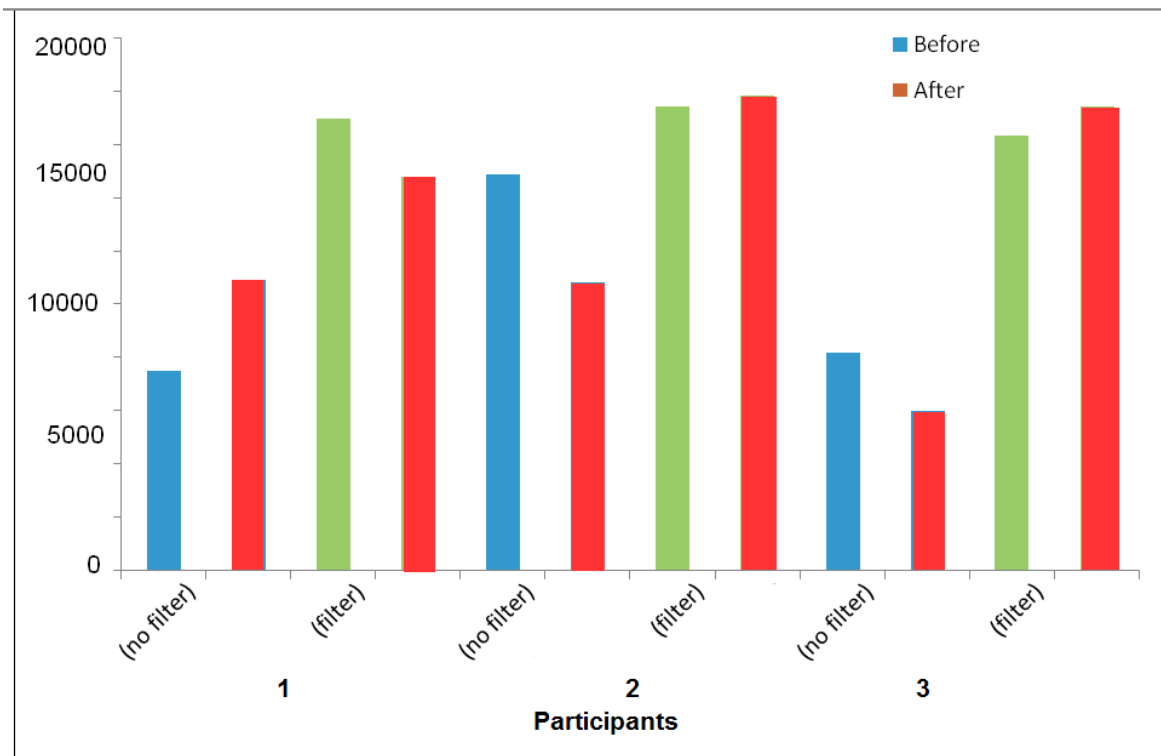


Fig 6. EF for Instructors before and after session.

In this case data were collected with and without special plastic membrane, which allows distinguish between psychological and somatic EF. This membrane (or filter) is placed on the surface of glass electrode where we place fingers. This allows to avoid the influence of skin perspiration to the discharge development. For 1 person EF increased, for 2 people decreased, while we need to mention slight increase of somatic EF for 2 people (green bars).

Practitioners Mentors

10 people took part in the study, 5 women and 5 men, age 32 +/- 10.

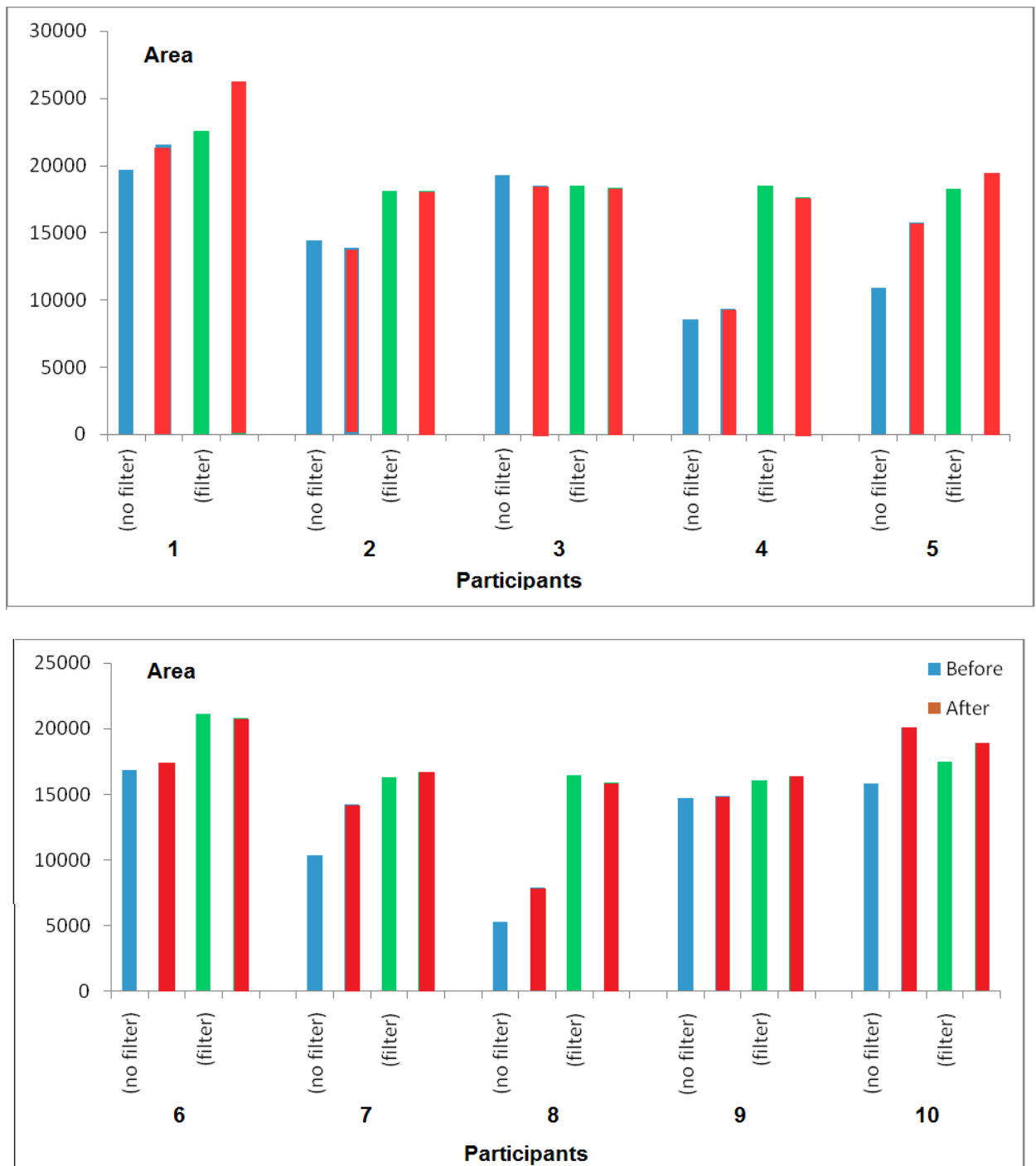


Fig 7. EF for Practitioners Mentors before and after session in the first and second day.

As we see from the graphs for 7 people EF increased and for 3 people it was practically no changes.

Amsterdam, Holland, November 12 – 17, 2009

Measurements protocol

Three types of GDV/EPC measurements has been established during the seminar:

1. Influence of attending the practical seminar.
2. Influence of reconnection healing session.
3. Influence of selfhealing session on advanced practitioners.

Participants of the workshop

40 people (27 women and 13 men, age from 18 to 61) from the participants of the practical seminar took part in GDV/EPC measurements. They were asked to come for EPC screening before the seminar (12-13 November) and then after the seminar (16-17 November). So each person has two captures made with filter and without filter.

Participants of this type of EPC measurements were coming for screening all day long (with 15 minutes interval).

Reconnection healing session

12 people (7 women and 7 men, age from 21 to 43) took part in this type of EPC measurements.

They were measured before the reconnection healing session and right after it.

This research was made in the evening at 9-11 pm, November 12.

Selfhealing session of advanced practitioners

13 advanced practitioners (7 women and 6 men, age from 21 to 53) took part in this type of measurements.

They were measured right before the selfhealing session and right after it before the dinner November 16.

Data processing

Two types of data processing for these types of measurements were applied:

1. Processing in GDV/EPC software – “GDV Energy Field”.
2. Advanced processing of all data in special software “GDV Scientific laboratory”.

In the second case more deep, advanced and complex calculations after processing in GDV/EPC software using Microsoft Office Excel program were made.

Summary

Participants of the workshop (40 people)

We should notice that almost all people that took part in this type of measurements were very tired at the first screening (before the seminar) and at the second (after the seminar) too. Their tiredness before the seminar during EPC capture can be explained by the fact that they appeared right from airplanes or after a long ride by car. After the seminar they were tired because seminar ended very late each day during weekend, so participants didn't have enough sleep.

That is why we can't see statistically significant difference in their physiological or psycho-emotional state.

Most of participants demonstrated non-significant changes in psycho-emotional state (below 10% deviation - natural fluctuation of human state) 16 from 40 people showed overall harmonization of their state – decrease in Form coefficient. 13 people showed increase in Form coefficient) and almost no shift in Area (2 positive and 1 negative) and Average intensity (100% of participants demonstrated no shift).. Big shifts in this parameter can be explained by the influence of Reconnection frequencies.

Decrease means calming down of psycho-emotional state and harmonization, and big increase means excitation that can be explained as activation of some processes in the human body.

If we take into consideration the absence of significant shifts in Area and Average intensity of energy field we may attribute shifts in Form Coefficient to the redistribution of energy.

Reconnective healing session (12 people)

On physiological level participants didn't show any changes in their state (100% of participants). We know that physiological state doesn't change fast and during the time of healing session (less than 1 hour) no significant changes took place.

On psycho-emotional level we can see shift in Form coefficient parameter for 9 from 12 (75%) of participants. And no significant changes in other parameters.

This shift is connected, as we have mentioned earlier, with overall harmonization of human energy field.

Selfhealing session of advanced practitioners (13 people)

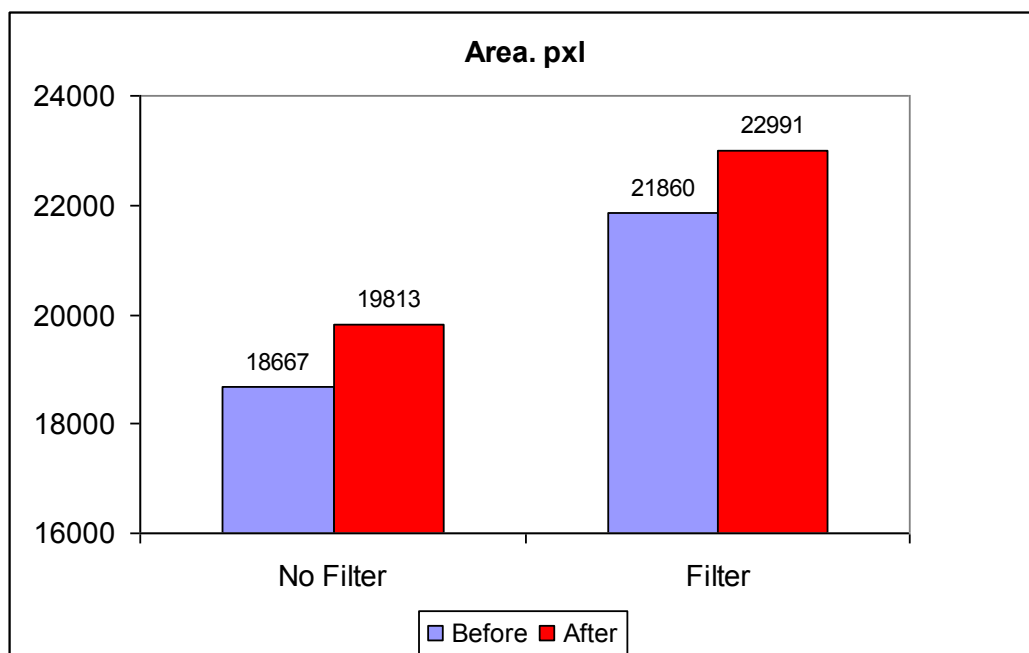
We should take into consideration that advanced practitioners were also very tired after a very difficult weekend and a lack of sleep. But anyway there were shifts in Form coefficient for 7 people on psycho-emotional level and for 6 people on physiological level. From the other hand big difference of these results from results of US workshops may be an indication of different attitude to the training process between European and American population. This topic needs more detailed study.

Conclusion

We may conclude that reconnective healing sessions in Amsterdam resulted in changes of human energy field: harmonization and redistribution of human energy.

Data processing in "GDV Energy Field" program

Data for this type of study was processed in "GDV Energy Field" program and assessed in Microsoft Office Excel program. On diagrams average values for the group are presented. Increase in Area may be correlated with the overall increase of energy output, while decrease of entropy is related to the harmonization of the condition.



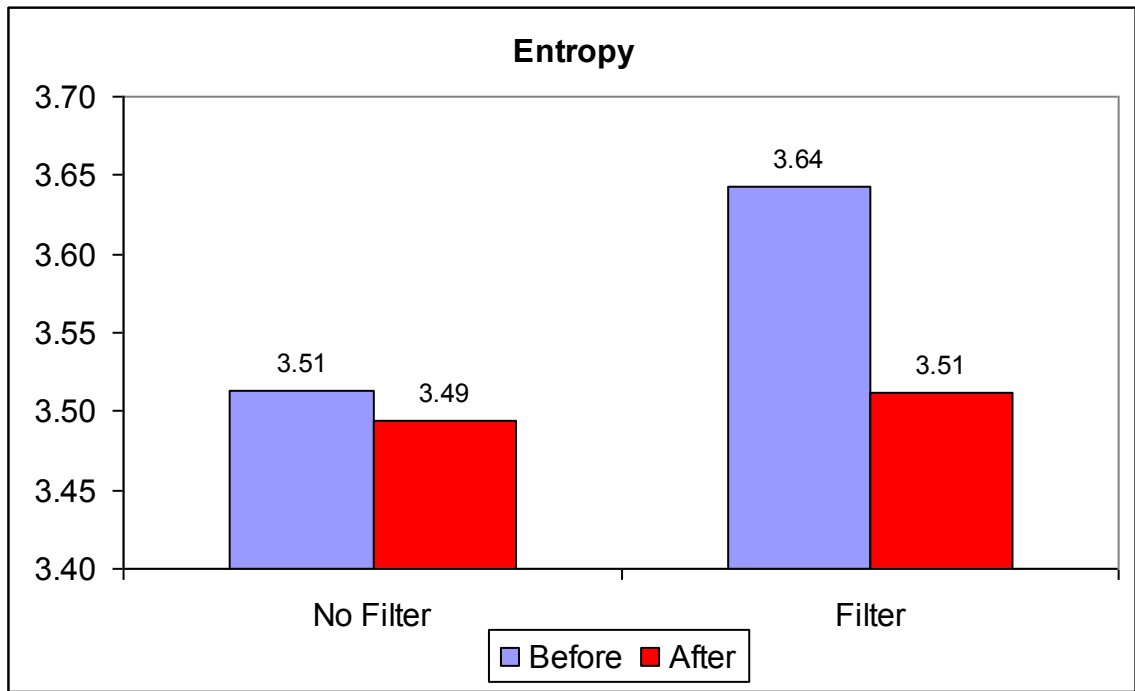
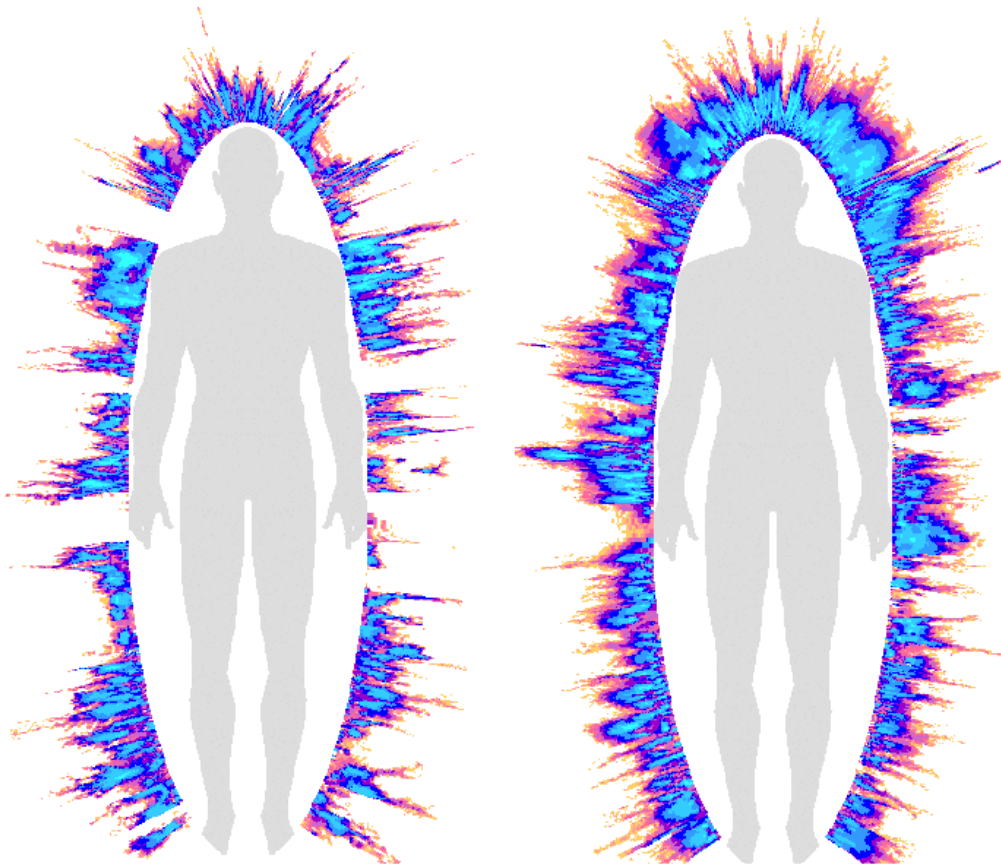


Fig.8. Changes of Area and Entropy before and after workshop.



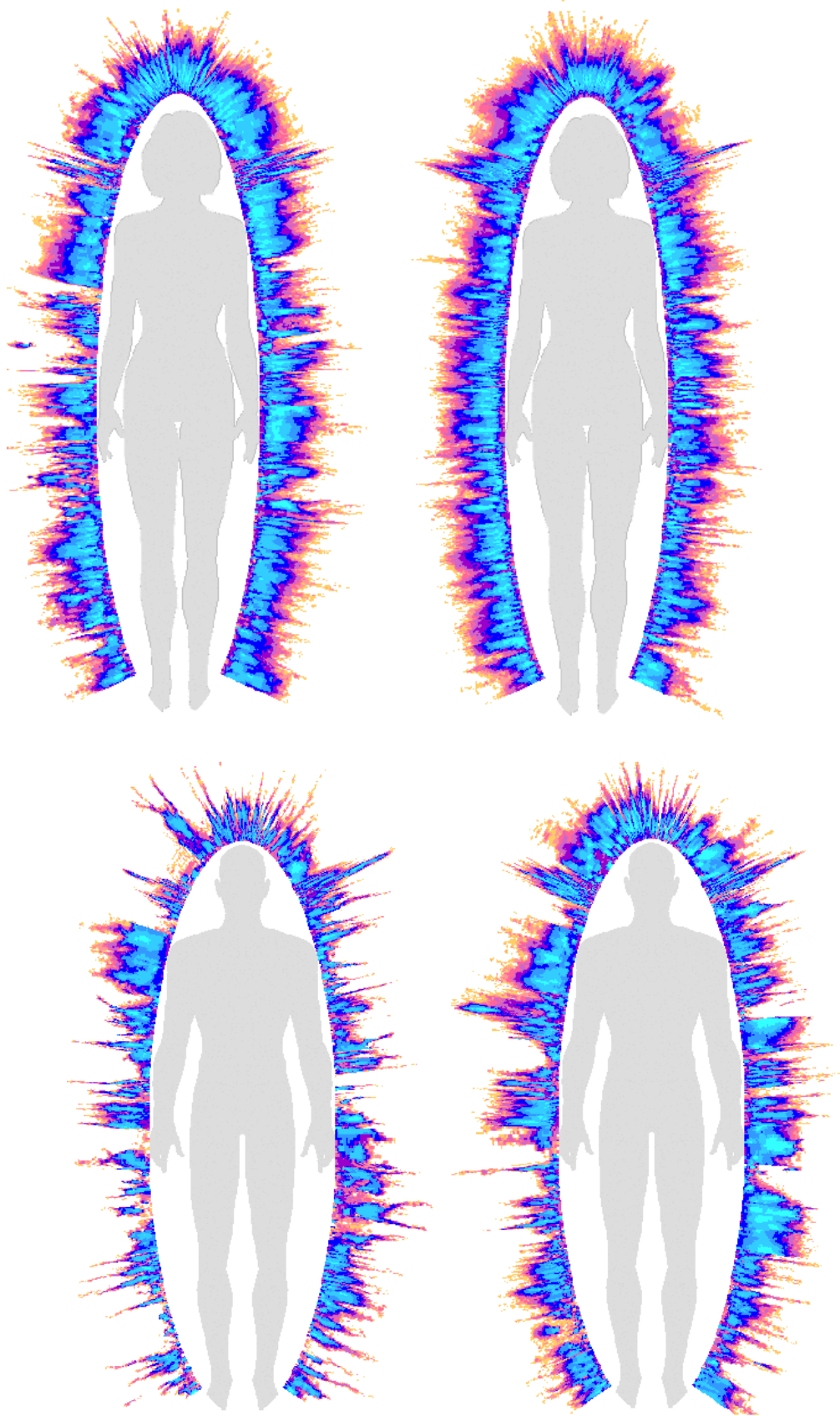


Fig 9. Examples of Energy Fields before and after the workshop.

DISCUSSION

Analysis of all data is presented in Tables 4-5.

Table 4. Changes of Area of Psychological EF (without membrane filter).

		Increase	No Changes	Decrease	Total N of people
LA 2008		6	17		23
St Petersburg 2009		7		2	9
LA 2009	AP 1	7		2	9
	AP 2	8	2	2	12
	Instructors	1		2	3
	Mentors	7	3		10
Amsterdam 2009	Participants	2	37	1	40
	Healing session		12		12
	Self-healing	1	10	2	13
	Total	39	81	11	131

Table 5. Changes of Form Coefficient of Psychological EF.

		Increase	No Changes	Decrease	Total N of people
LA 2008		2	6	15	23
St Petersburg 2009		2		7	9
LA 2009	AP 1	5	4		9
	AP 2	1	11		12
	Instructors	2	1		3
	Mentors	1	8	1	10
Amsterdam 2009	Participants	13	11	16	40
	Healing session		3	9	12
	Self-healing		6	7	13
	Total	26	50	55	131

Area is associated with the power of EF, so increase in Area we may be considered as positive outcome of the session.

Form Coefficient (FC) is the measure of harmonization of EF, so decrease in Form Coefficient may be considered as positive outcome of the session.

We can make several mail conclusions from these data:

1. Two types of positive effects for participants during Reconnective Healing sessions were recorded: increase in Area and decrease in FC. In most cases either one effect or another was recorded.
2. At some sessions Area of EF was increasing for most of the participants (St Petersburg and LA 2009 – see Table 6); while in LA 2008 session it was practically no changes of Area, but very significant changes of the Form Coefficient.
3. Abovementioned effects may be related to different modalities of the Reconnective Healing, conveyed by different trainers.
4. No difference between women and men responses was found.
5. Results strongly depend on the trainer: strong effects were recorded at some sessions, and practically no effects at the other.
6. Response to Reconnective Healing is very individual and may depend on the initial condition of a person: the level of stress, tiredness, psycho-physiological condition.
7. Very little changes of somatic EF (with membrane – filter) was found. So we may conclude that Reconnective Healing had no negative effects to physiological conditions. From our experience we know that positive effects may be expected after several days after the session.
8. For European population strong effects of EF harmonization were found, but we do not know to which factors this may be attributed.
9. More experiments are needed with detailed control of all factors.

Table 6. Changes of EF during two sessions

		Increase	No Changes	Decrease	Total N of people
St Petersburg 2009		7		2	9
LA 2009	AP 1	7		2	9
	AP 2	8	2	2	12
	Instructors	1		2	3
	Mentors	7	3		10
		30	5	8	43

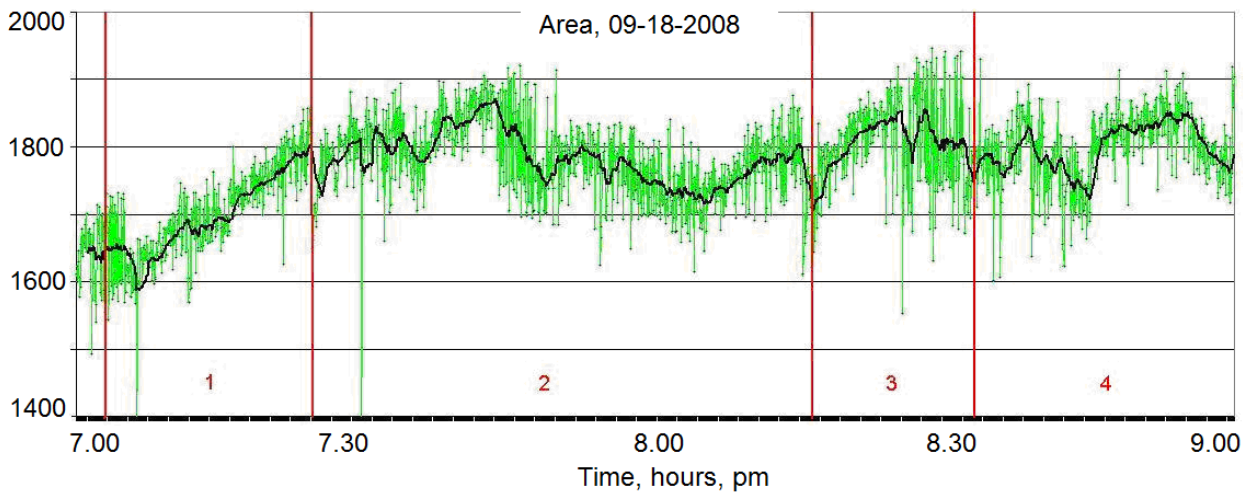
DATA OF ELECTROPHOTONIC SENSOR

Two types of Electrophotonic Sensors were being used during the conference: antenna type and “Sputnik” type. Antenna sensor was operated from computer and powered from wall outlet, while “Sputnik” sensor ran on battery in automatic mode without connection to the computer. Information was recorded on a memory stick. After finishing recording information was processed in “Scientific Lab” program (producer KTI Co, St. Petersburg, Russia). All the experiments were conducted in double-blind regime.

Los Angeles, September 18-20, 2008 (fig.10)

Monitoring of Space with the “Antenna” type sensor was conducted every Conference day by Krishna Madappa. Data processing was done by Dr. Konstantin Korotkov. Sensor was positioned in the conference room and connected to the EPC Camera and to the notebook computer. All devices were warmed up for 1 hour before the arriving of the participants, and measurements were half an hour before the conference and during all the day of the conference. Processing of data was done in “GDV SciLab” program. Graphs below demonstrate time dynamics of the Electrophotonic Sensor parameters for every day with marked moments of interest.

SEPTEMBER 18



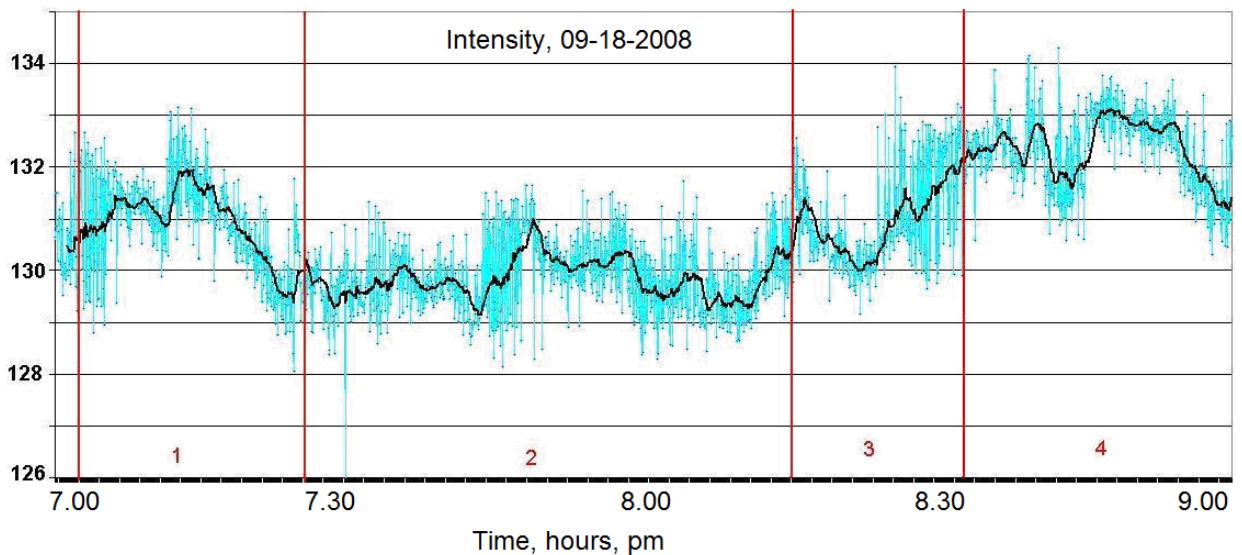


Fig.10. Time variations of Area and Intensity recorded by “Antenna” type sensor.

- 18.30 - Room set up process, Dr. Emoto enters room.
- 19.04
- 1. 19.05 - Doug DeVito initiates welcome address & inaugurates conf.
- 19.23 Hopi elder, Vernon conveys prayer and blessing.
- 2. 19.24- Doug intro. Dr. Emoto, who speaks in Japanese with the aid of a translator. Plays music (Classical to Pop), has audience participate in kineseology exercise with fingers and observe effect of positive and negative thoughts. Shows slides of color dispersion in water influenced by music. Describes and resonates tuning forks and attunes ears to 440 & 442 Hz.
- 20.20
- 3. 20.21- Jokes and laughter with attendees and plays “Edelweiss”,
- 20.30 “American Anthem” and a opera composition by “Maria Callas” while Emoto San with the attendees sing on.
- 4. 20.35 - Continues talk on consciousness and water, a song and then concludes.
- 21.09

SEPTEMBER 19 (FIG.11)

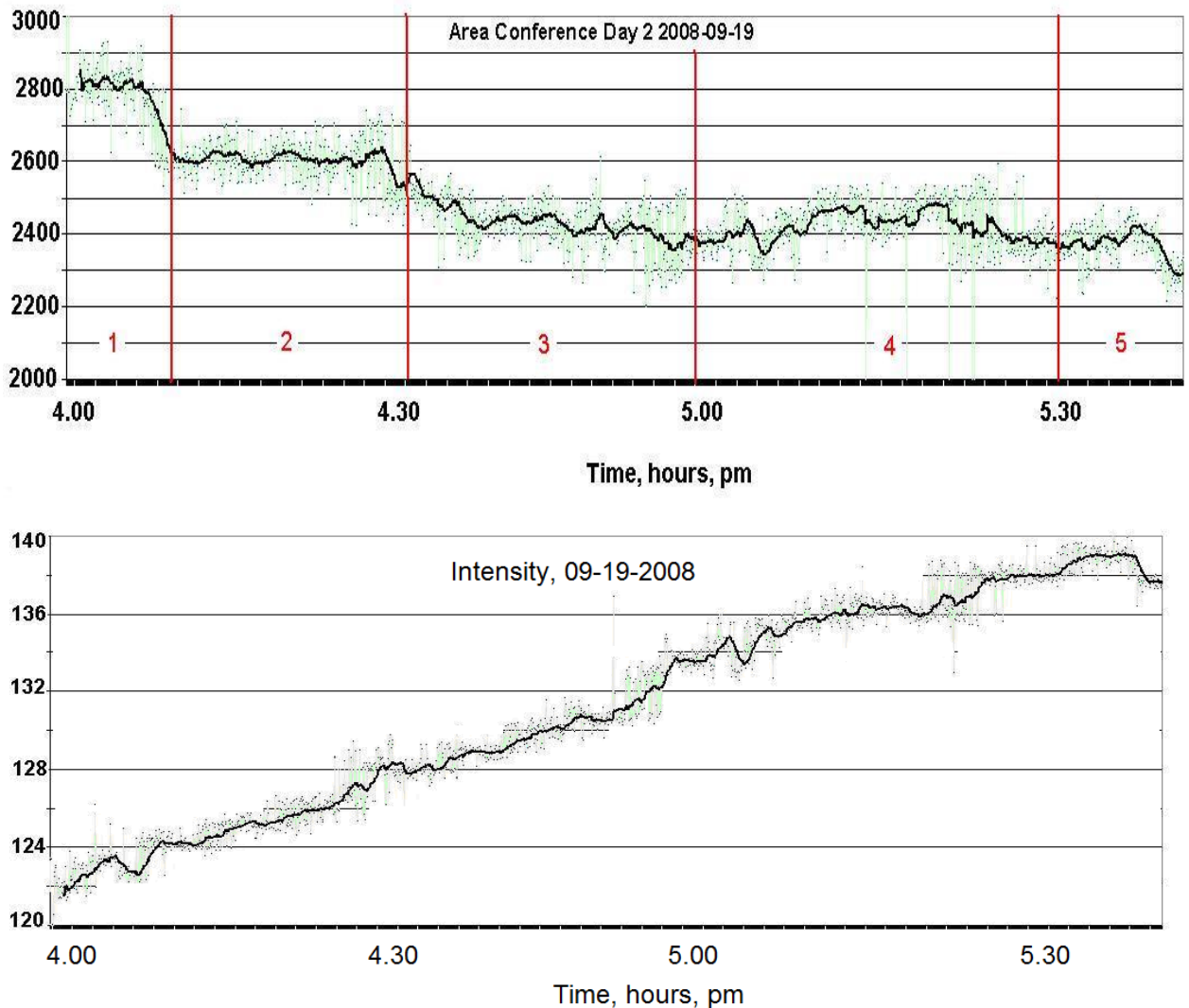


Fig.11. Time variations of Area and Intensity recorded by “Antenna” type sensor.

Time sequence regime of activity :

- | | | |
|---|----------------|---|
| 1 | 1600 -1609 | Doug begins and leads the attendees into RC process and intro. the works of Dr's. Schwartz, Tiller and Korotkov as reference to quantifying RC dynamics. |
| 2 | 1610 –
1631 | Eric arrives and sets up to play channelling recordings from 1995. Chanellers words include “ Forces stronger than your resistance to it.” Also conveys recordings from 1999. |
| 3 | 1632 –
1705 | Key words from channeller, “allow the force to surface and listen.” Eric’s guidance and advice to attendees as follows. |
| 4 | 1706 –
1740 | Eric’s discussions. 1718 Doug recaps days events plus a refresher of events to ensue and final thoughts. |
| 5 | 1730 | Session concludes. Data capture continues till 1740. |

Observation: During Eric’s deep channelling recordings that were conveyed, the entire conference hall space conveyed an awake “trance” state.

SEPTEMBER 20 (FIG.12)

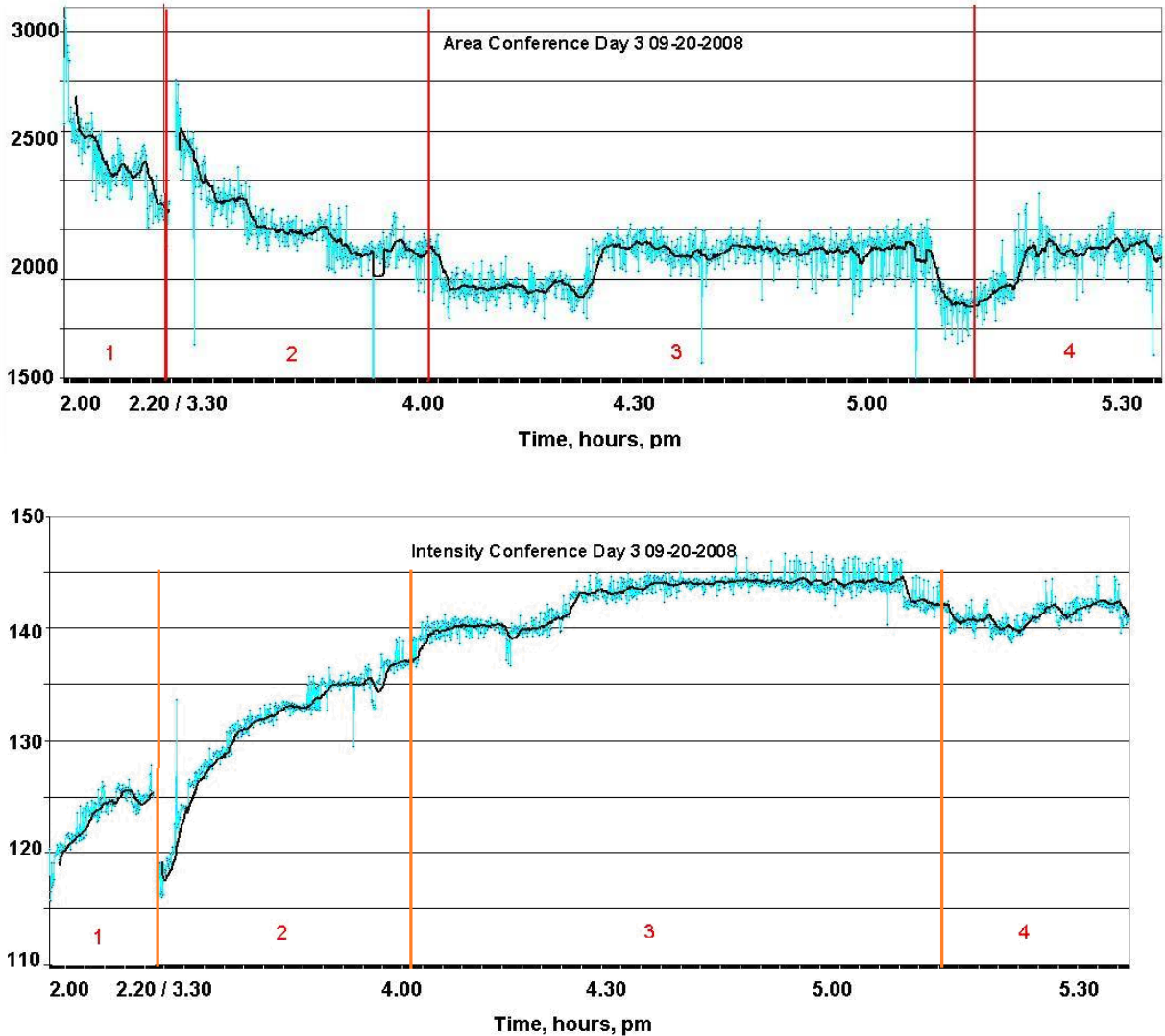


Fig.12. Time variations of Area and Intensity recorded by “Antenna” type sensor.

Time sequence regime of activity:

- | | | |
|---|----------------|--|
| 1 | 1400 –
1531 | Attendees arriving and orienting to seats, Doug on podium & introduces Dr. Gary Schwartz. Schwartz outlines the sum content of the presentation. Attendees “very focused”, in spite of the high background noise from a wedding preparation event. Schwartz continues with the research insights from, a) Photon induced Seed Germination Studies conveyed by Human intention; b) Holographic imprinting of fields and the implications of the awakened human dynamic and more inspirationally awakening research. (Due to technical problems recording was interrupted at 2.20 pm). |
| 2 | 1531 –
1558 | Intermission |
| 3 | 1559 -
1715 | Dr. Bill Tillers lecture begins at Conveys explorations in “Psycho Energetic Science” and describes the “Sedona Research” in 2005 with Dr. Eric Pearl. Speaks on “unseen forces” as hidden particles, seeking to embody the human for |

the transformation of the collective “Mind”. Continues to convey essential insights from the 40+ years of “Psycho Energetic” research and explorations. Vital message from Tiller “When the acupuncture – meridian – chakra system is in the “coupled” state, we are awake to our cosmic nature and hence the unbounded intelligence of the universe is present in the field. Q & A from

4 1715 – Doug asked to reference on reciprocal space and it’s
1736 implications especially during healing.

SEPTEMBER 21 (FIG.13)

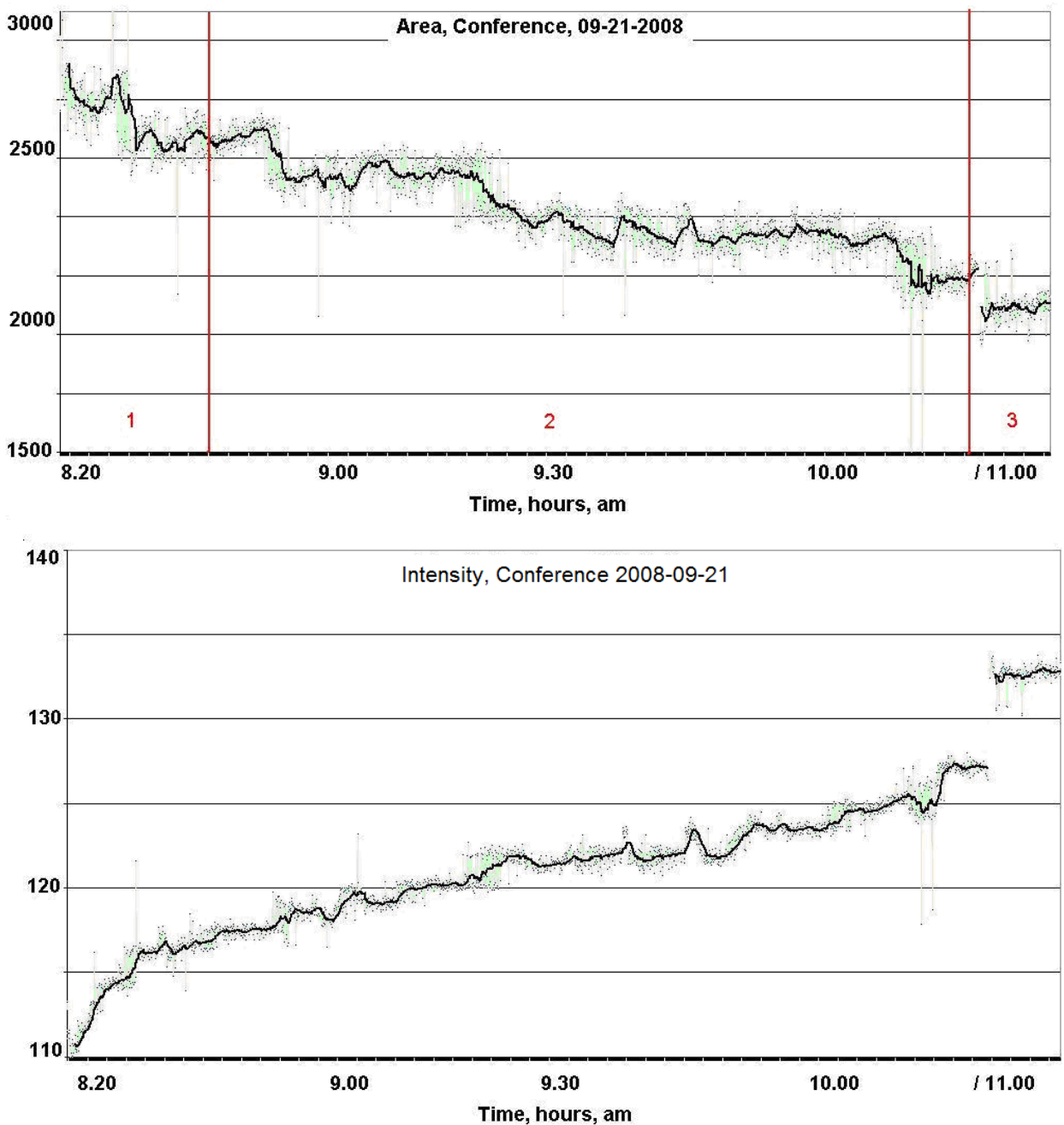


Fig.13. Time variations of Area and Intensity recorded by “Antenna” type sensor.

Time sequence regime of activity :

- | | | |
|---|----------------|---|
| 1 | 0821 –
0836 | Attendees arriving, meet & greet activity - set up crew in their focused modes as Steven Halpern's composition of "OM" resonance permeates the hall and attendees also "couple" to the OM. |
| 2 | 0837 –
0941 | Konstantin arrives and begins presentation with in-depth exploration and conveying the recorded data from the science of EPC, life, the fabric of our cosmic being and consciousness explorations around remote and sparsely populated regions of Mother Earth. When Konstantin was speaking on death, spirits, observations during research studies in the depth of night the sensors stopped recording. This was about 1 min. Konstantin discusses and explores topic on "Energy of Spaces" and conveys insights as a daily practical modicum to enliven and enrich our inner and outer domains. Presents preliminary findings from the RC Seminar and concludes. |
| | 1024 –
1104 | Recess |
| 3 | 1105 –
1235 | Panel Discussion Begins: Dr's Pearl, Schwartz, Korotkov & Tiller. Eric addresses the nucleus of a singular focus and purpose and the implications to well being. The "Soul of Science" and the guideposts via practice, research and exploration to potentialize and raise the bar of cumulative well being was implicitly conveyed by the panel of visionaries. |

As we see from the graphs, **09/18** was very clear reaction to the beginning of presentations by Dough DeVita and active reactions during all the day. Reactions were presented both on Area and Intensity graphs. Both Area and Intensity had some increase during the day.

09/19 we may define reaction to the beginning of the presentation (1), later on the day no specific reactions could be defined. Intensity was increasing during all the day.

Los Angeles, September – October 2009

Two types of Eco-Sensor were being used during the conference: antenna type at September 25, 26 and 27 and "Sputnik" type October 03 and 04. Antenna sensor was operated from computer and powered from wall outlet, while "Sputnik" sensor ran on battery in automatic mode without connection to the computer. Information was recorded on a memory stick.

In all cases sensor was positioned in the corner of the room at the table without chance of shaking or moving the table. Temperature and humidity in the room was controlled and stayed in normal range.

Graphs presented below demonstrate reaction of the sensor to the entropy in the auditorium.

Summary

Workshop September 25-27.

High variation of parameters were recorded during workshop.
The highest response was recorded on Sept 26 by all parameters.

Yoga class Oct 3.

Increase of Area and Intensity after the beginning of yoga session was recorded. During the class parameters were quite stable.

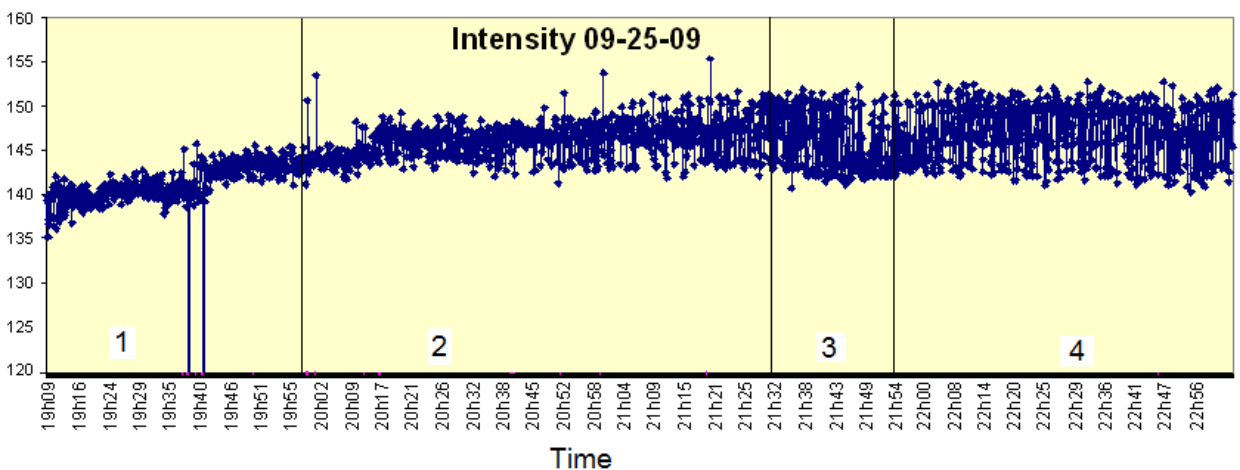
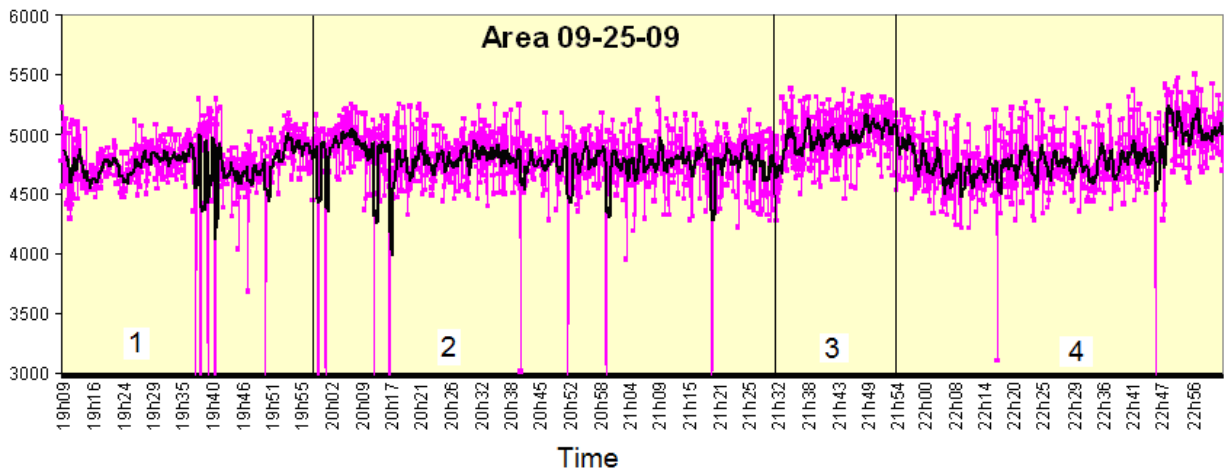
Conference Oct 4_1.

Very high reaction to the presentation of Dr Korotkov was recorded for all parameters.
During presentation of Dr Tiller parameters were quite stable.

Conference Oct 4_2.

Increase of Area and Entropy and decrease of Intensity after beginning of Dr Sigafosse presentation was recorded. Stable level of signal was kept during brake time. Presentation of Dough DeVito was reflected by high variation of all parameters followed by short closing words by Dr Pearl.

Workshop 25 September 2009 (fig.14)



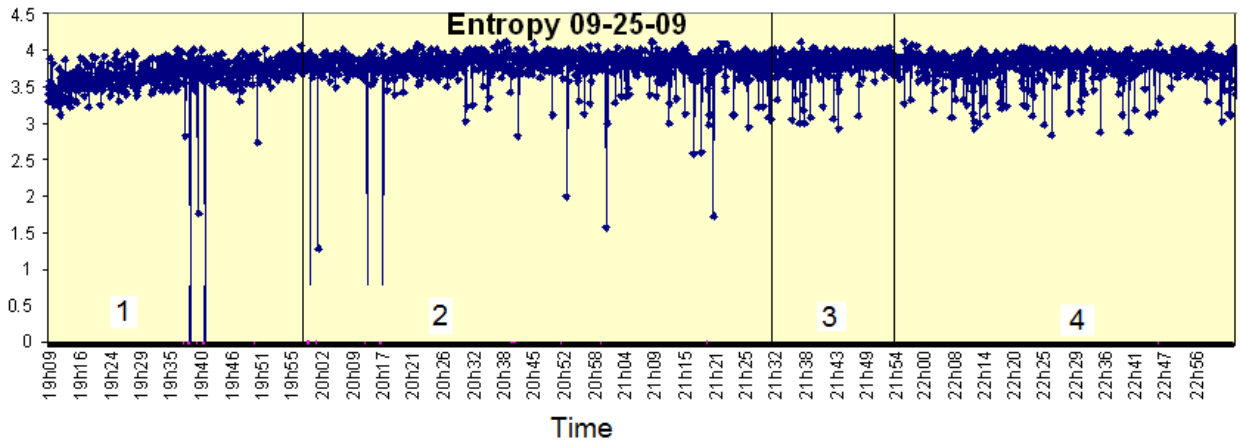
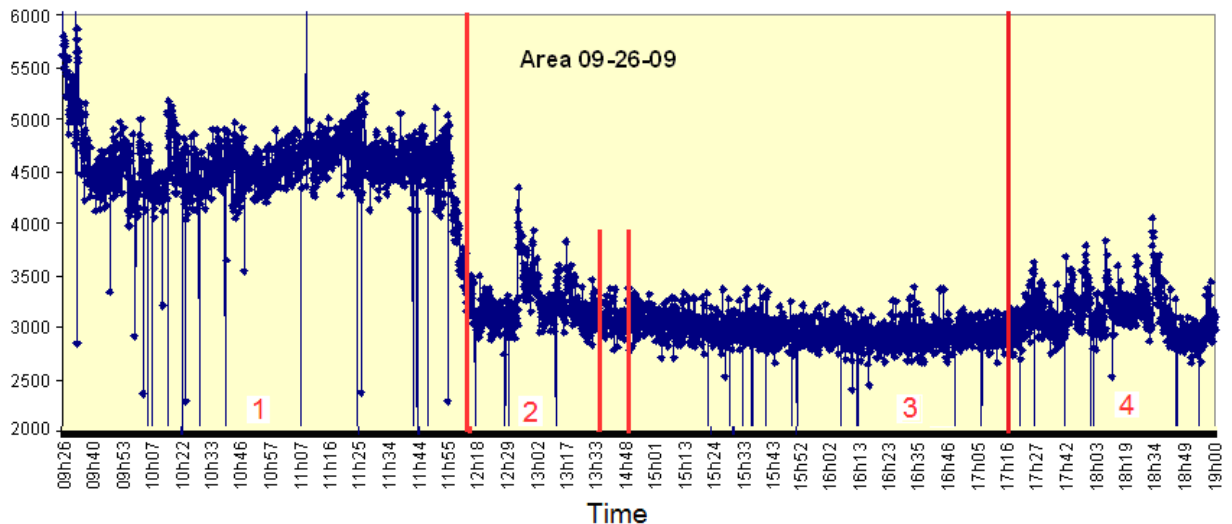


Fig.14. Time variations of Area, Intensity and Entropy and recorded by “Antenna” type sensor.

Time sequence regime of activity :

- 1** 1909 – 1959 Attendees arriving and seating in progress. Doug DeVito on podium “Essence Lecture” and then introduces RCA’s. Video Presentation + package handouts + focussed lecture. Attendees v. attentive.
- 2** 2000 – 2132 Eric enters, conveys insights/jokes & discussions. 2035 , engages attendees who have restricted hand motion & conveys by RC practice this can no longer impede ones development. 2057 Eric asks the 2 attendees who had restricted hand motion from earlier to raise their hands fully.....yet again & they did so effortlessly
- 3** Recess
- 4** 2154 – 2257 Eric on podium with attendees now in direct participation of RC. Concludes day 1 with this affirmation – “We are Light.”

Workshop 26 September 2009 (fig.15)



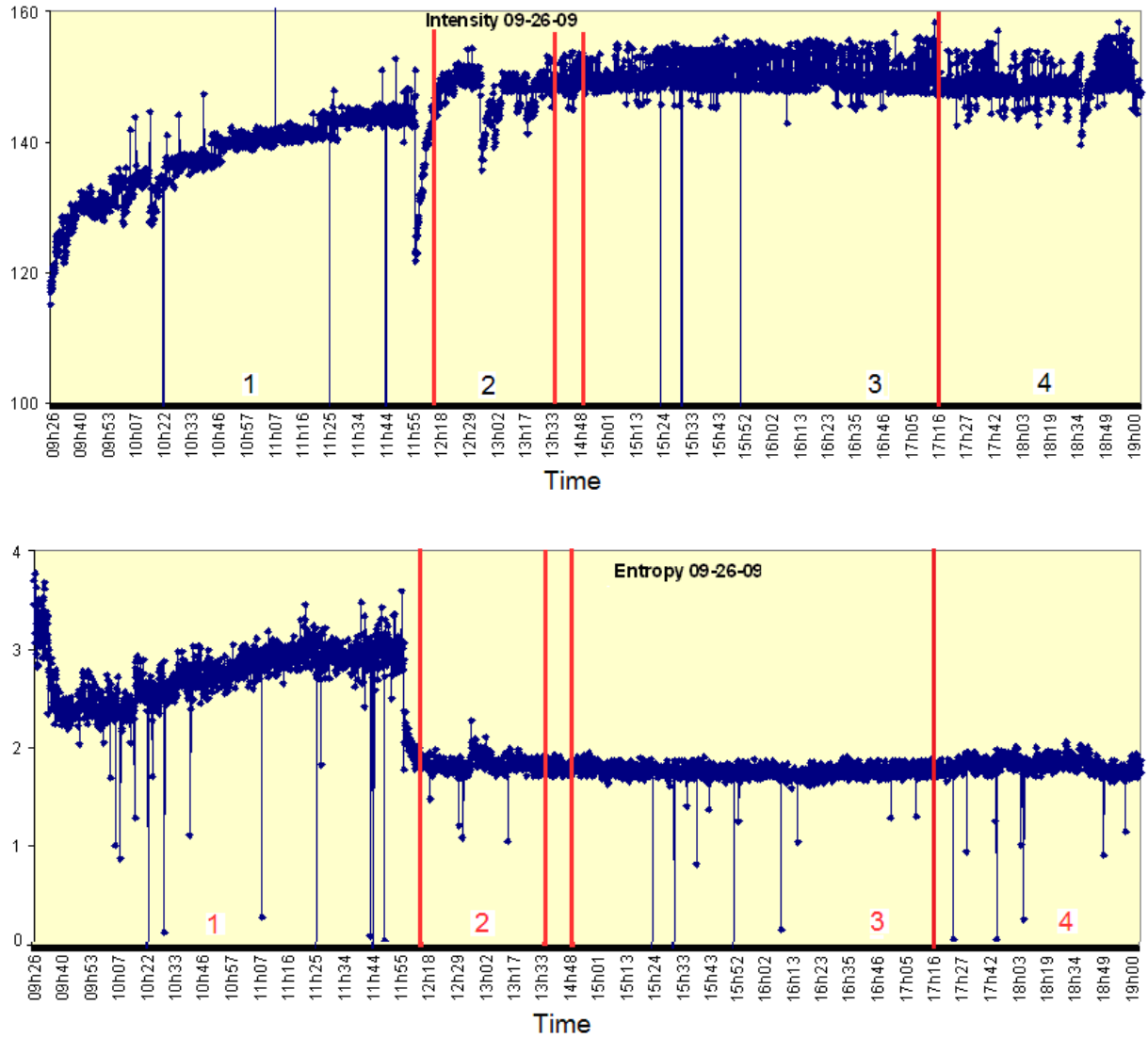


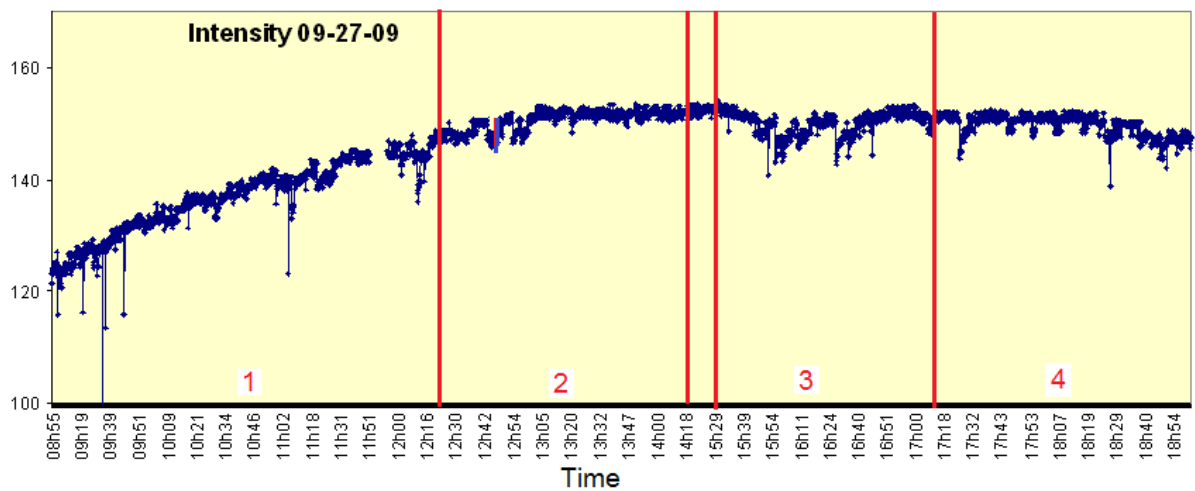
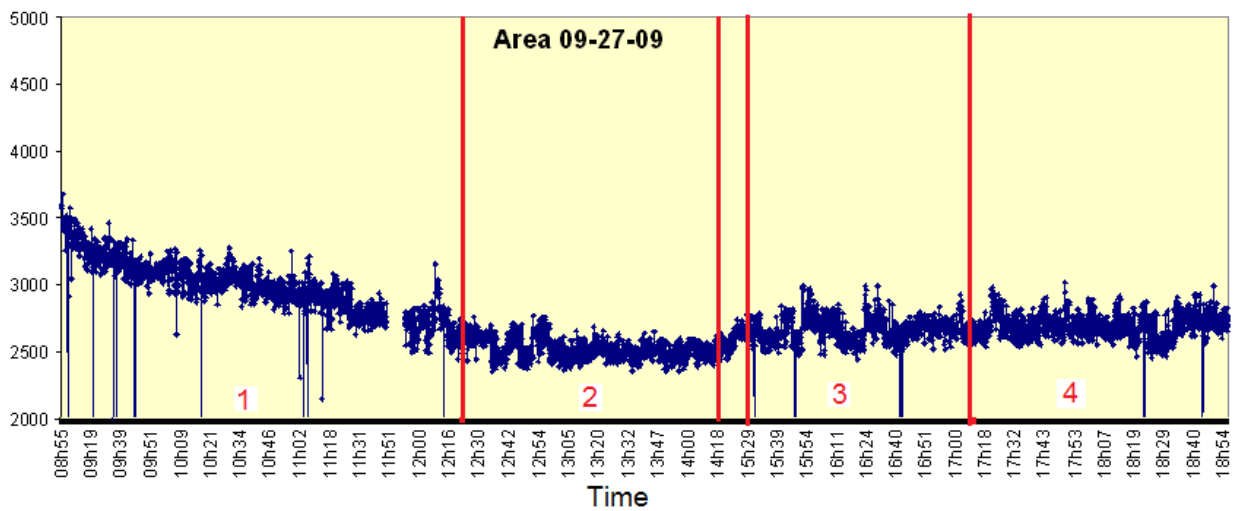
Fig.15. Time variations of Area, Intensity and Entropy and recorded by “Antenna” type sensor.

Time sequence regime of activity :

1	0926 – 1215	Attendees settling in & Doug invigorates the group. Doug proceeds to convey the essence of RC Attendees are very attentive. 1020 , Demonstrations of basics of RC 1045 , description of float process w mass. table participant. Instructions by Christine to all attendees of MTB guidelines. 1109 – 1156 , all attendees on MTB, process is 1 on table, 2 on either side.
2	1216 – 1335	Doug conveys studies done on influencing leaf/plant DNA w RC frequencies. 1223 , Eric arrives, jokes w insights & opens Q & A to floor while affirming permanence of RC process.
	1336 - 1447	Lunch while hlng. sessions are in process.
3	1448 – 1651	Doug conveying how human DNA was influenced by RC + his

		personal transformation. 1511 , Doug back on podium & conveys insights w Konstantin in S.Pb. Application, practice & process is conveyed, demonstrated, assisted. 1543 Eric arrives & assays strength of presence in all as Doug, TA's are navigating the rows 1632 , next rotation of ATD's are the participants as Eric directly initiates the FFS principle.
	1650 - 1715	RECESS
4	1716 – 1903	Eric & Doug conveying “Hands Behind Back” process w 2 ATD's w descriptors that eyes are powerful transmitters. Next, all ATD's to MTB for Hands on HIng.(HOH) Eric continues to instruct & guide to focus on observable prompts. Table partners switch as focus of HOH is on shoulder. Session concludes 1757 Eric punctures thru this inertia w strong, clear thoughts that can empower till close, announcements and closing notes

Workshop 27 September 2009 (fig.16)



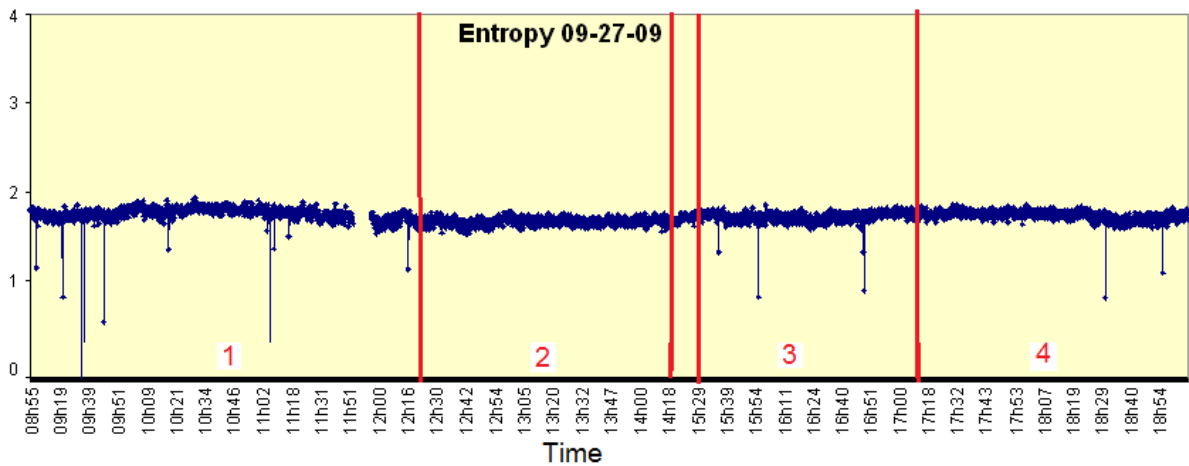


Fig.16. Time variations of Area, Intensity and Entropy and recorded by “Antenna” type sensor.

Time sequence regime of activity :

- 1 0855 – 1223 Attendees arriving, high buzz from room till 0935 . Doug arrives, buzz subsides, reviews FFS – Registers w some descriptors. Emphasis on “Focus on Feeling.” Float – Running Start – Wtr. Ride – Wtr. Fall. A new intro. for today is (PD) “Proximal Distance.” ATD’s focus high! Reads pg. 341, KOE & introduces the principle of entropy. 0950 , Pat is introduced, shares her own experience of her son who had a hearing impediment. Pat proceeds to convey the intrinsic philosophy of RC as (a) support, (b) speak from the Heart, (c) passion & truth & with that conveyed process of how to build a RC practice. 1003 , Doug conveys more explorations + a leaf study inducing how these high fre. resonance can permeate in all. 1018 , PD process is demonstrated & all ATD’s to MTB to explore PD. Doug blends TA’s & conveys instructions as fine tuning the PD process – ATD’s in active participation – “Feel / Observe / Take Step back.” 1031 , ATD’s switch positions – Doug instructs on “Feel / Observe / Take Step back” as more Energy / Light / Info. (ELI) flows. Ref. to “Whole Person Healing.” Explores possibility of RC of DNA, strings /strands. 1041 , nxt. batch of ATD’s on MTB with RCP guiding. Key words, “Confidence of Knowing”, “Refine – Step back”....see & feel the connection. 1053 , ATD’s switch places, Helen guides w key words, “Relax System”, “Feel the Connection” w mid line suspension. 1103 , Doug arranges the MTB w 2 ATD’s on each side of MT w an ATD on MT (2 + 2 + 1). Has the foll. procedures reviewed, 1. Float, 2. Wtrfall process, 3. Suspension. 1112 , ATD’s switch positions & continues to guide group. Invites feed bk. from ATD’s & explores the presence of feelings & emotions. Recess for 10 min & back at 1156 . Doug lightens the ATD’s w some jokes & conveys processes governed in light. Explores sciences conveyed by Newton/Einstein/Heisenberg/Korotkov/Tiller/Schwartz. Highlights the “Escalator of Light” observation referencing the

- U of A studies by Schwartz on RC + Reiki + Qi Gong etc. & integrating the breath of the RC to Life / Practice & empowerment to guide & focus.
- 2** 1224 – 1428 Eric arrives & opens the floor for Q & A. 1238 , exercise on posture. Conveys w clarity/courage/loving/laughter the “think outside the box” phenomenon. Addresses Ego & it’s limiting process.....conveying the lasting doctrine of “Integrity – Consciousness – Perfection.” 1312 , ATD’s to MTB in 2 + 2 + 1 sequence. Conveys process of suspension – right arm straight down – fwd – in circular motion. ATD’s directed to focus on Eric & also to be attentive by also observing the 2 big screens. ATD’s in application mode w TA’s assisting. Satellite dish + float till the center of both palms are informed harmoniously. Practice in silence conveying the insight to “Stillness of Presence.” 1346 , 2 + 2 + 1 sequence shift for all ATD’s. Key mantra “ Refine motions” & w precise words, clearly conveys the fine tuning process of the RC field applications. “Silence of Presence” + “Samadhi” state is referenced as one listens to the language of the universe.
- 3** 1428 - 1527 Lunch
 1530 - 1710 ATD’s arrive & Doug guides the process for the next session.1533 , Christine (RCAl) enumerates the basics as a RCP w live demos. to ATD’s w Doug + TA’s conducting sessions for ATD’s in MTB area. Remaining ATD’s walk to MTB area to observe. 1547 , session concludes & Chris conveys to ATD’s on intake form + inspirations to start a practice & gives thanks to all. 1558 , Eric arrives & continues to elaborate, guiding ATD’s to go beyond attachment, be childlike, awake, conscious etc. Quote, “Music of Life is in your Instinct”, and proceeds to read from Fred the “Medium.” Inferences as “Harmonic convergence to the lives u are touching”, “Unattainable in a way”.....not by technique. “You must not be involved in a way the energy flows thru you”, “We are as a collective, worthy from within”, “Need to Love oneself.” 10 min recess & ATD’s filling intake forms
- 4** 1713 - 1850 Eric P/Up 2 ATD’s for a demo of RC – Hologram healing! With 1 ATD on MT, the 2nd ATD, is guided by Eric to work on the Hologram of the ATD on MT while the rest watch the 2 big screens for the registers. Eric recaps succinct process of seminar coverage. Another exploration is demonstrated using eyes only with 10 + 10 ATD’s as the rest observe register activity on screens. Another practice is using the senses. Encourages all to play and also explore the same principles in distant healing. 1810 , recaps guidelines to strengthen RCP process & has Q & A session as Eric provides all responses. 1842 , Doug has seminar closing announcements & encourages all to see “The Living Matrix” film. Session concludes

Yoga session 03 October (fig.17)

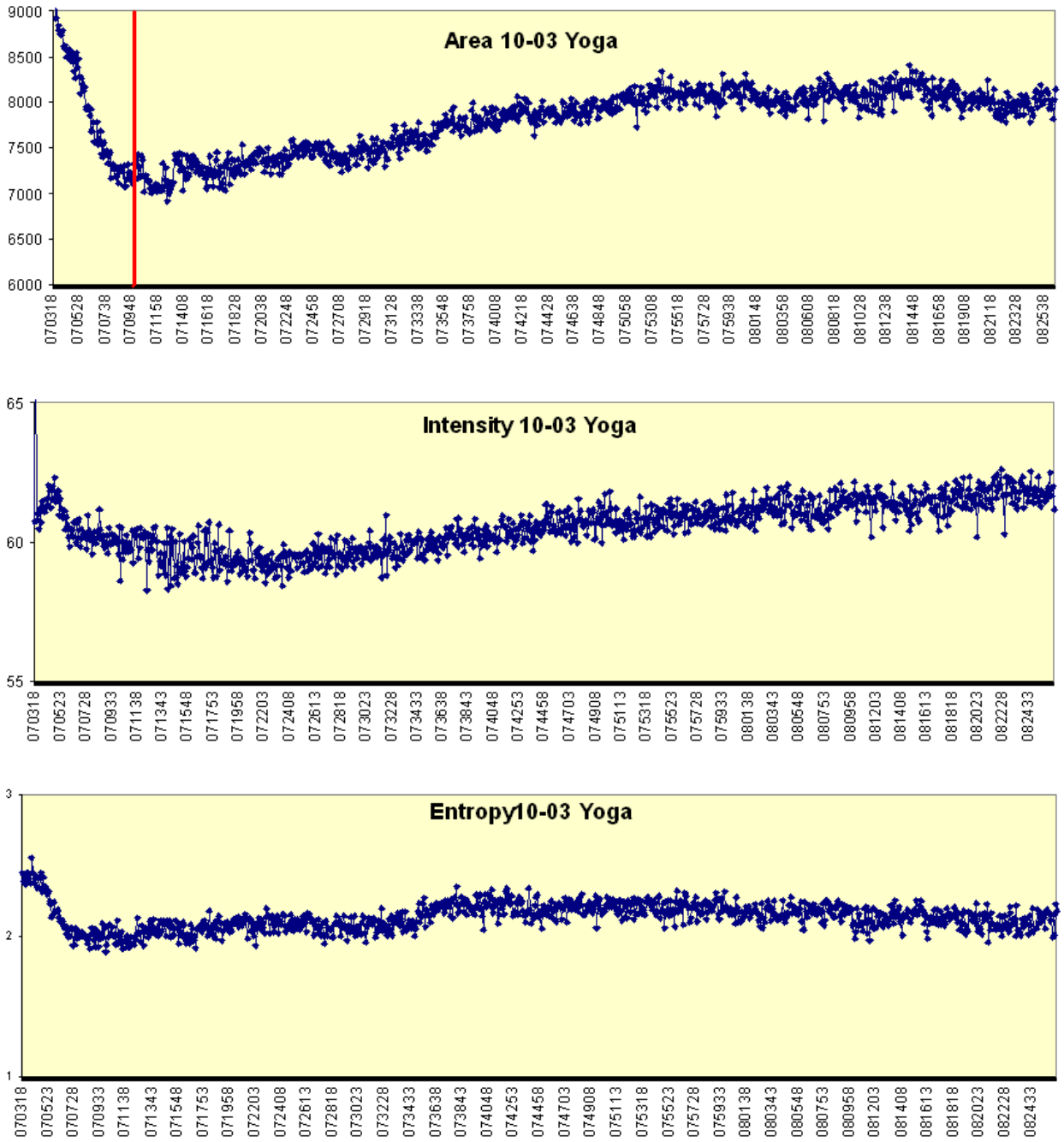


Fig.17. Time variations of Area, Intensity and Entropy and recorded by “Sputnik” type sensor.

Increase of Area and Intensity after the beginning of yoga session was recorded. During the class parameters were quite stable.

Conference 04 October (fig.18 and 19)

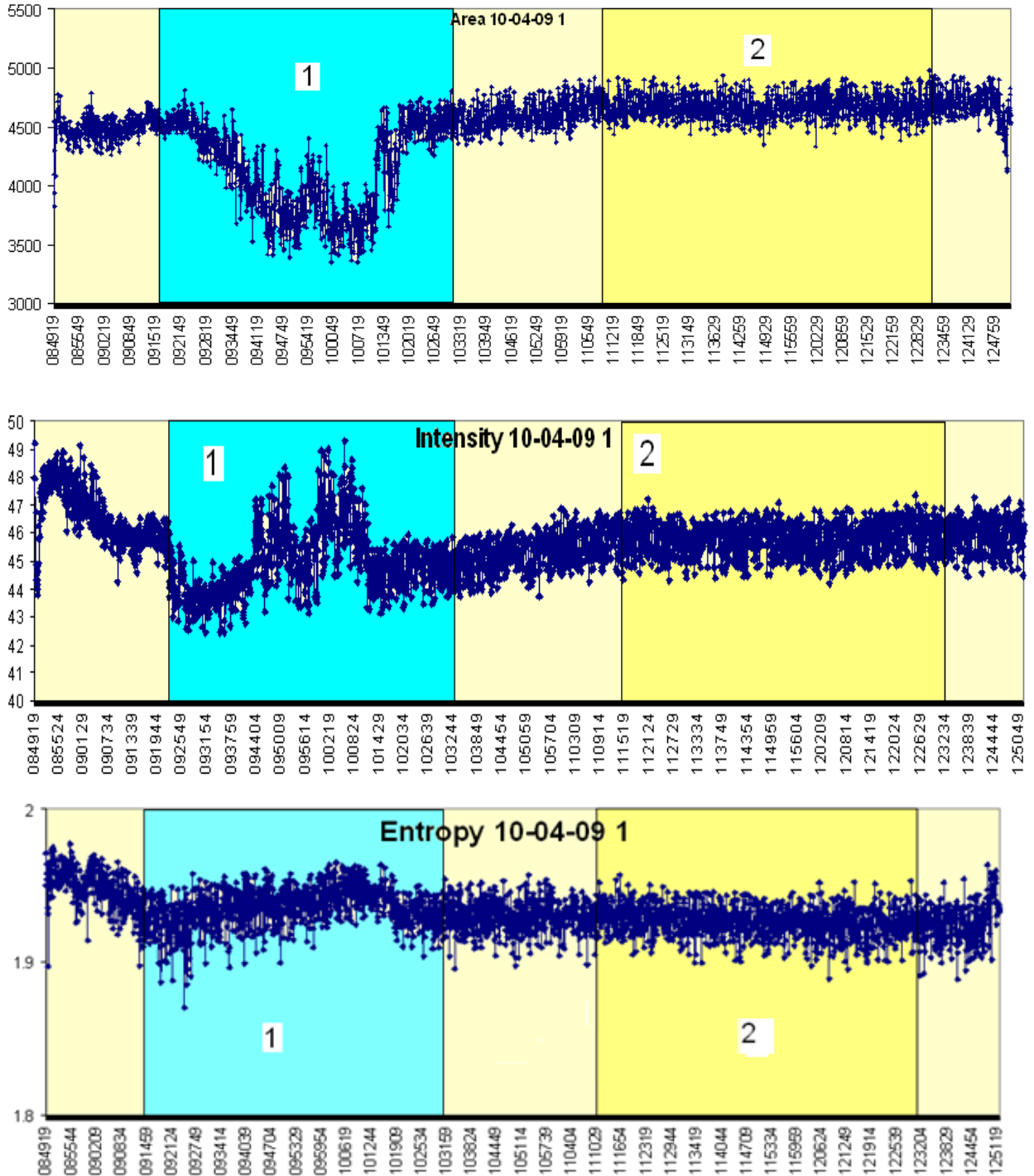


Fig.18. Time variations of Area, Intensity and Entropy and recorded by “Sputnik” type sensor.

Very high reaction to the presentation of Dr Korotkov (area 1 at the graphs) was recorded for all parameters. During presentation of Dr Tiller (area 2 at the graphs) parameters were quite stable.

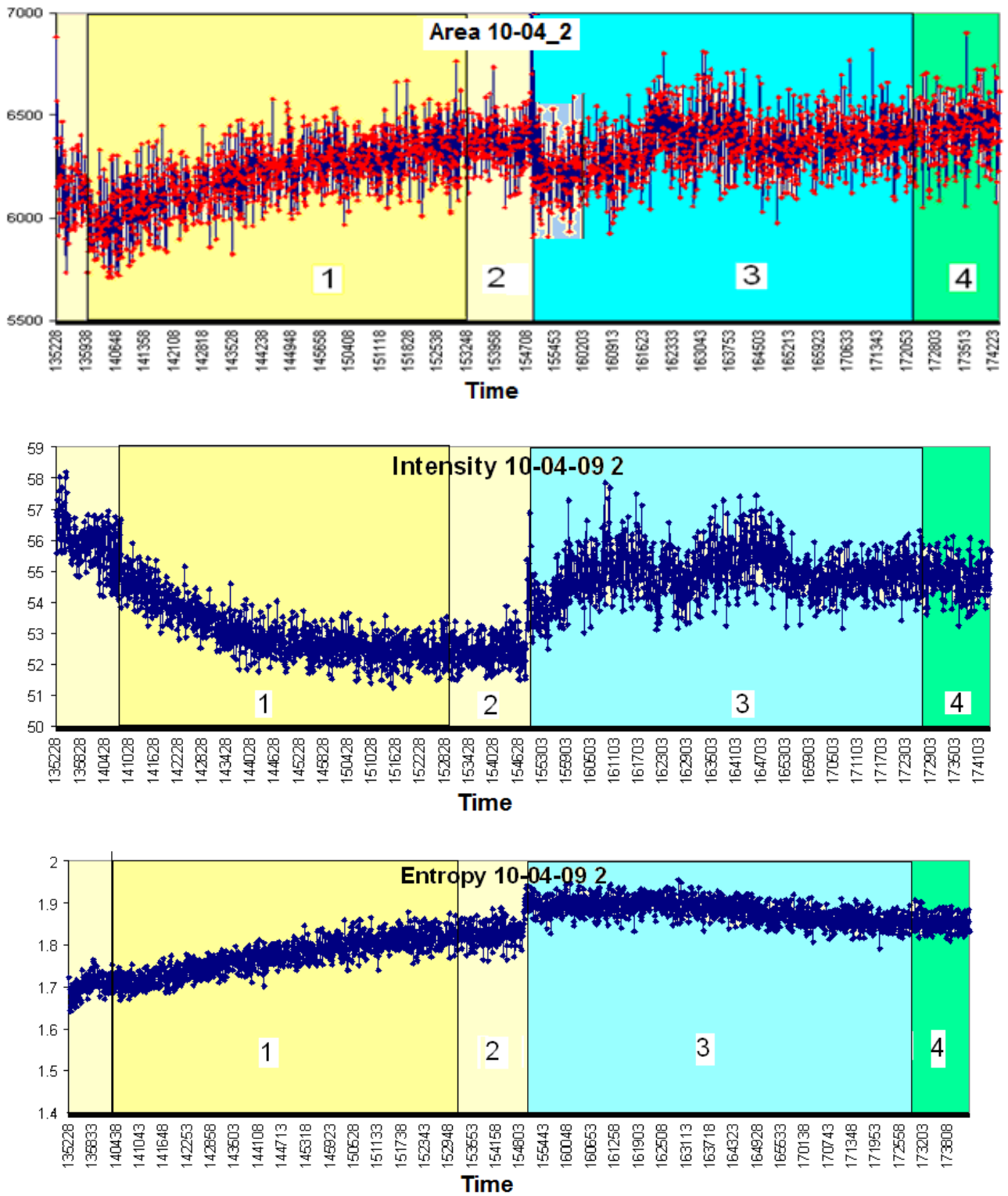


Fig.19. Time variations of Area, Intensity and Entropy and recorded by “Sputnik” type sensor.

- | | | |
|----------|-----------|---------------------------------|
| 1 | 1405-1530 | Dr Sigafoose presentation |
| 2 | 1530-1550 | Lunch |
| 3 | 1550-1728 | Presentation of Dough DeVito |
| 4 | 1728 | short closing words by Dr Pearl |

Amsterdam, November 13 – 15 2009

In these sessions Two types of devices were used:

1. "GDV Compact" EPC camera with standard antenna type sensor.
2. "GDV Eco-Tester" with "Sputnik" type sensor.

November 13 (fig. 20 and 21)

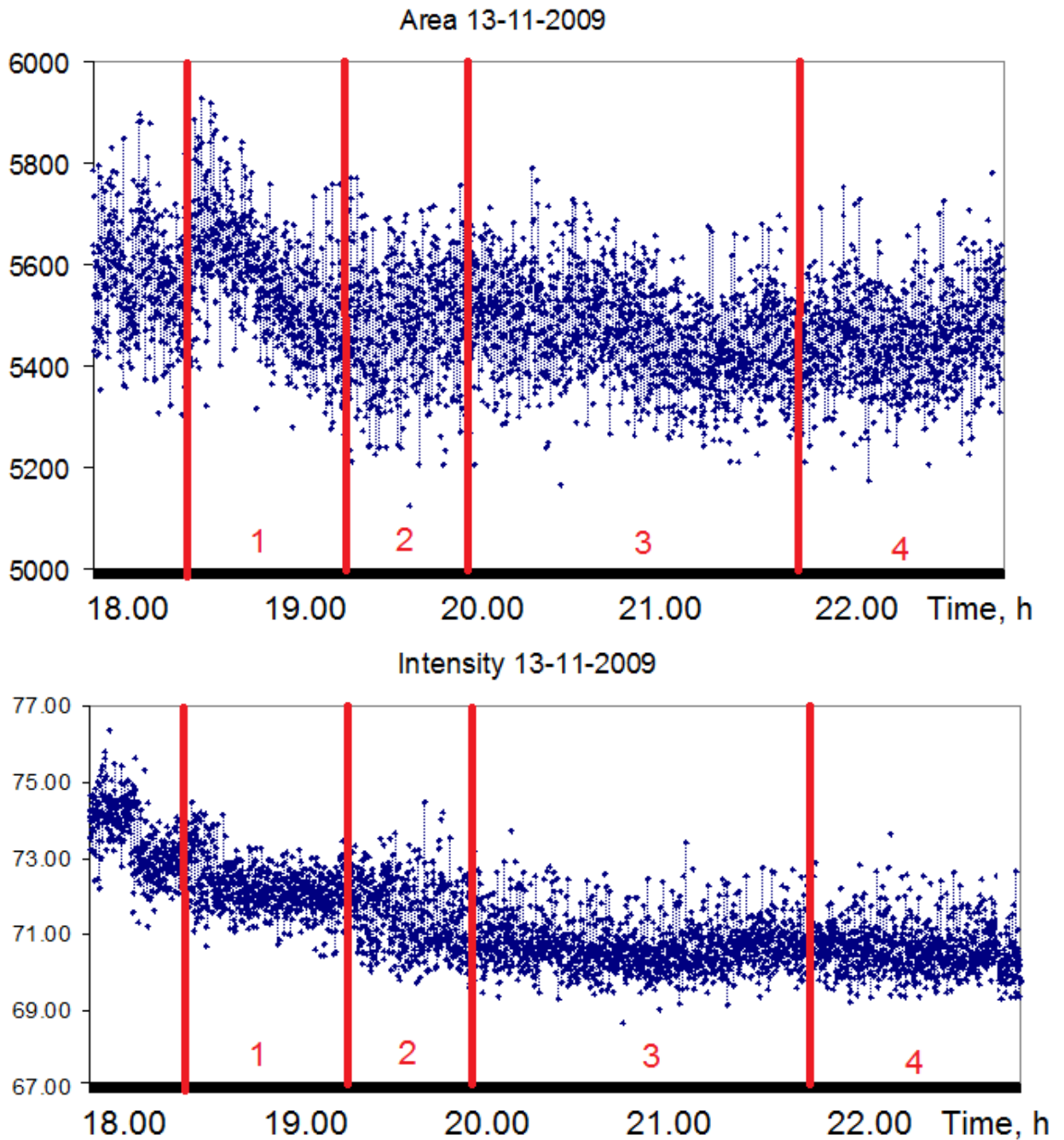


Fig.20. Time variations of Area and Intensity recorded by "Antenna" type sensor.

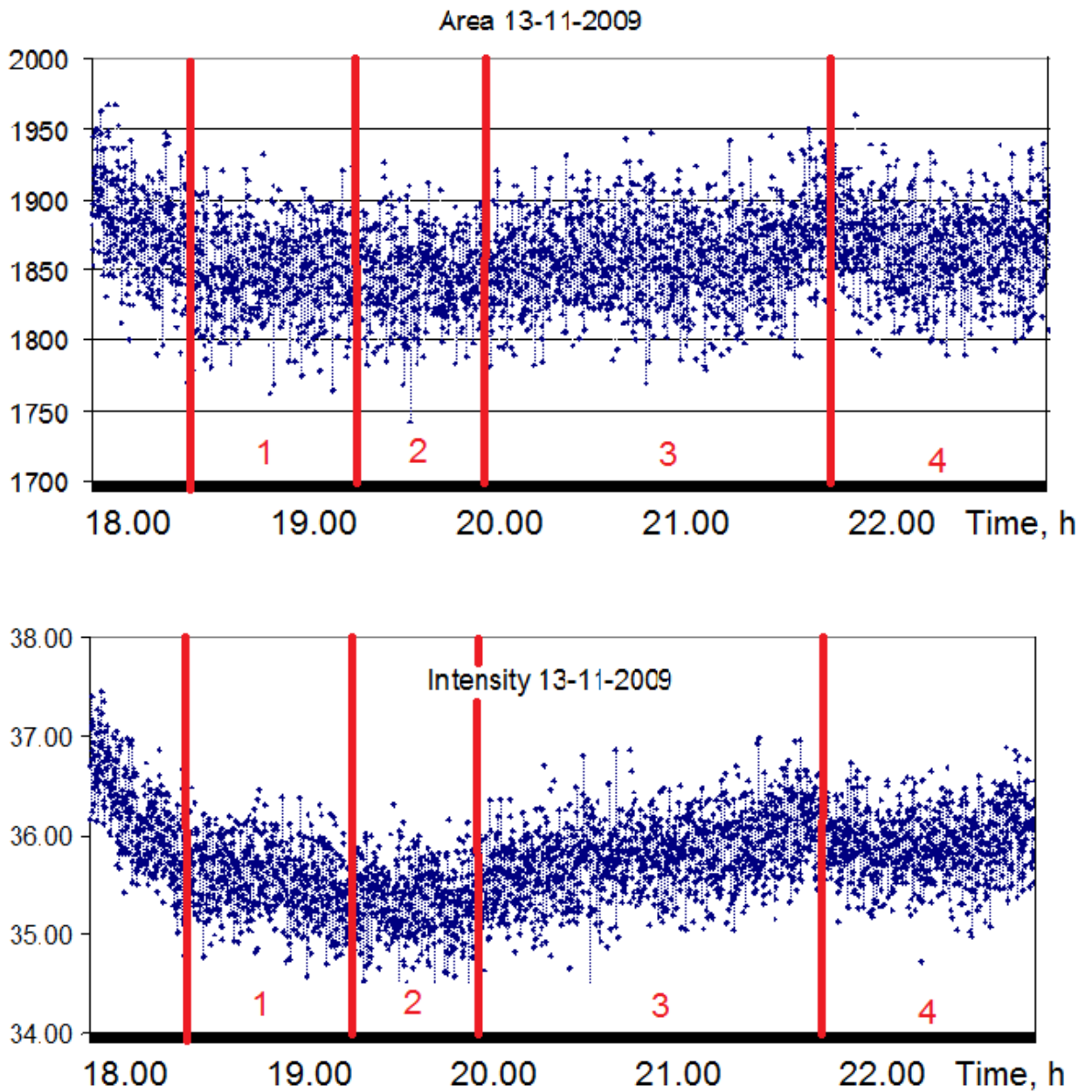


Fig.21. Time variations of Area and Intensity recorded by "Sputnik" type sensor.

- | | | |
|----|-------|----------------------------------|
| 1. | 18:20 | People entering the room. |
| 2. | 19:10 | Dough speaking. |
| | 19:42 | Movie. |
| 3. | 19:48 | Eric on the stage. |
| | 20:45 | Healing of a woman on the stage. |
| | 21:20 | Dough speaking. |
| | 21:22 | Break. |
| 4. | 21:40 | Dough speaking. |
| | 21:42 | Eric. Experiment with the hands. |
| | 21:55 | Eric speaking. |
| | 22:32 | People leaving the room. |
| | 22:45 | Big light turned off. |

14th November (fig. 22 and 23)

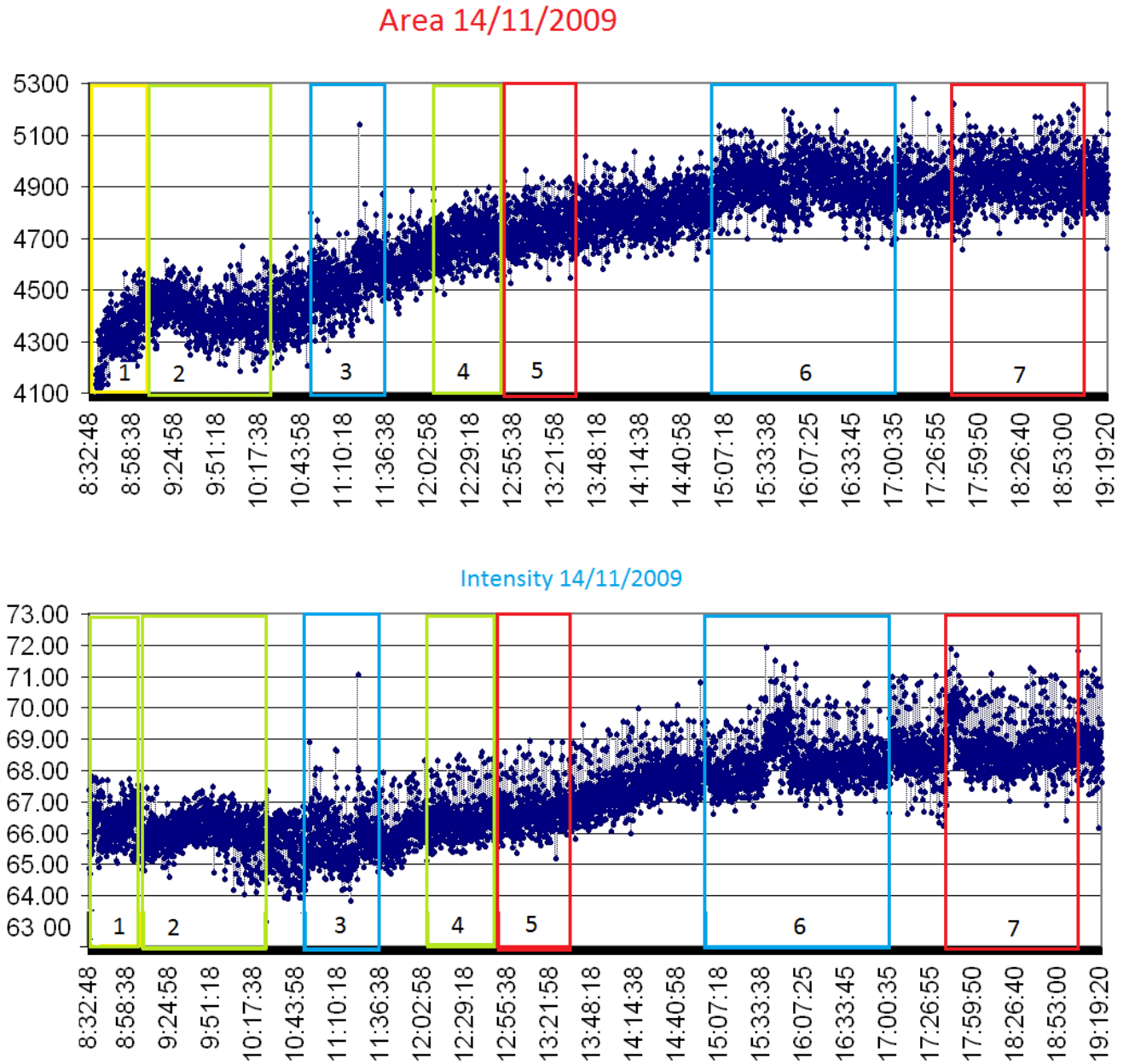
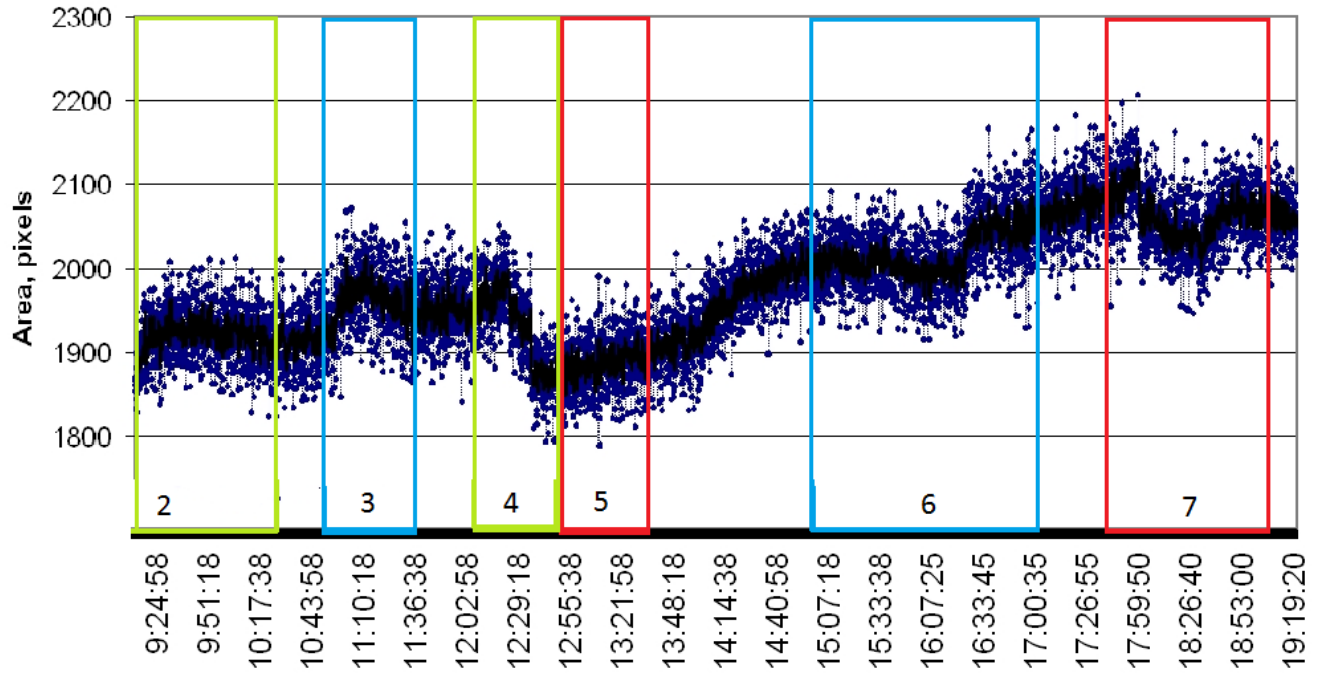


Fig.22. Time variations of Area and Intensity recorded by "Antenna" type sensor.

Area 14/11/2009



Intensity 14/11/2009

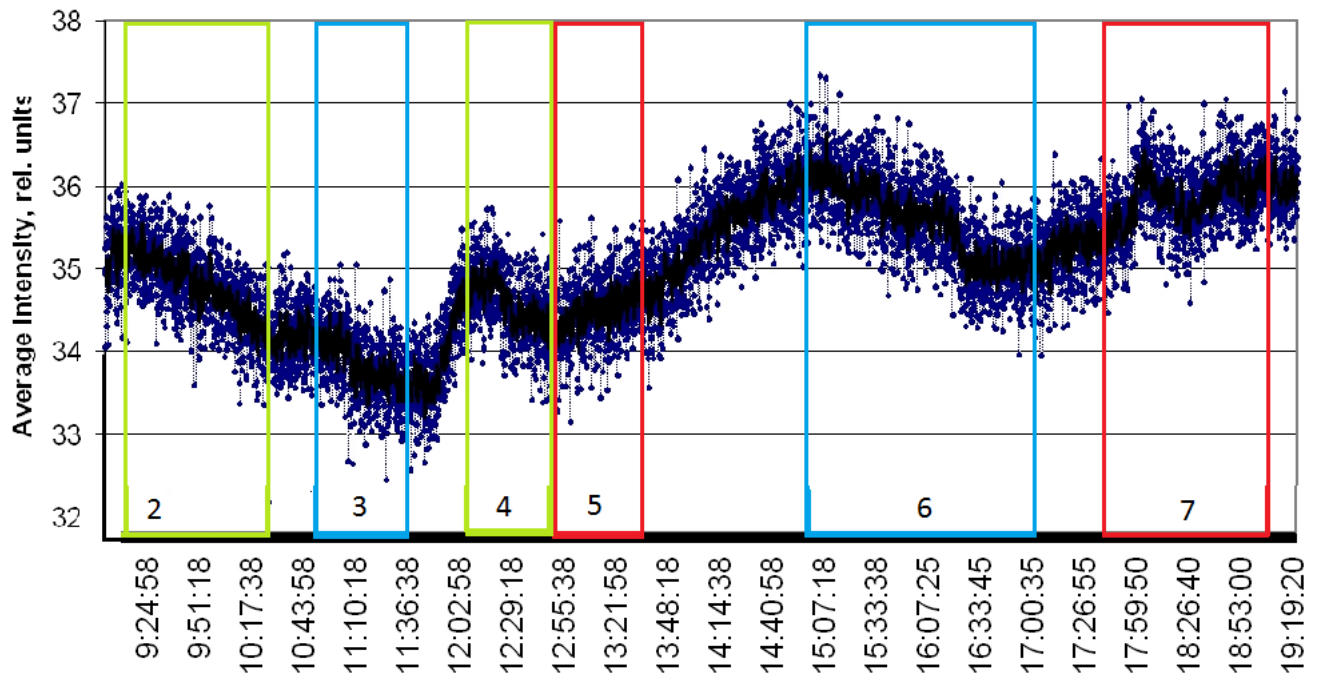


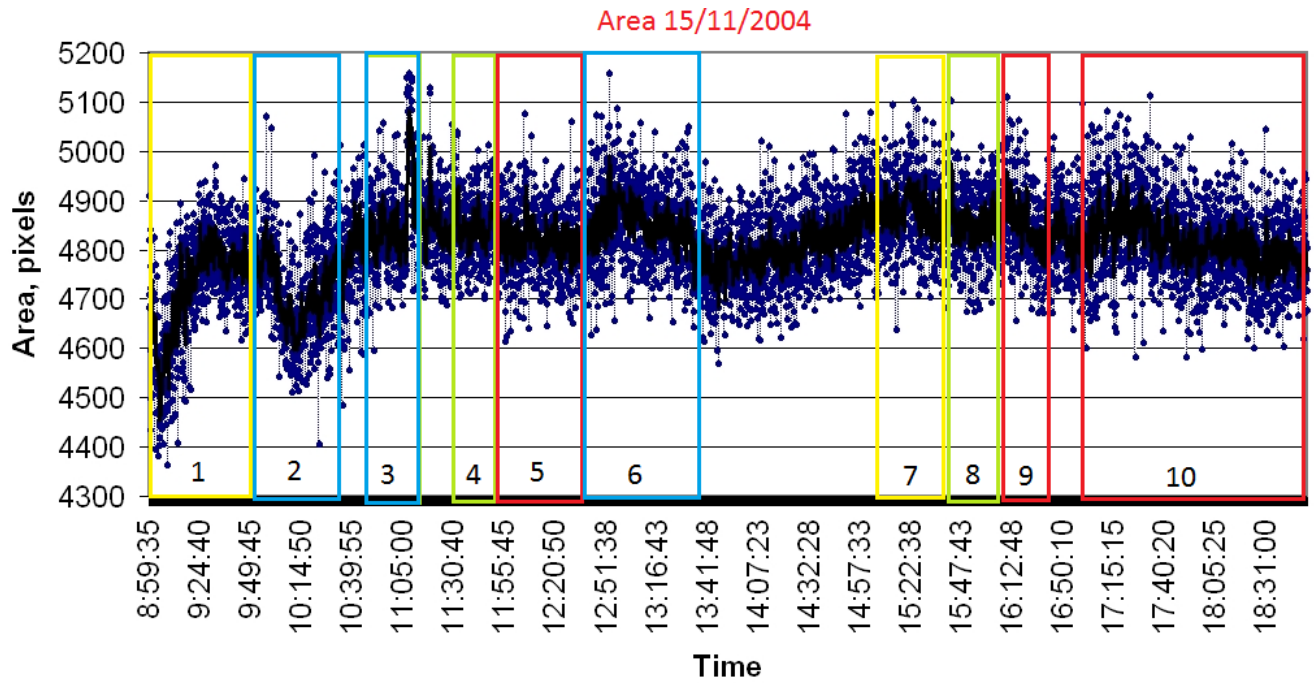
Fig.23. Time variations of Area and Intensity recorded by "Sputnik" type sensor.

- | | | |
|---|-------|---------------------------|
| 1 | 8:30 | People entering the room. |
| 2 | 9:05 | Dough on the stage. |
| | 10:25 | Kelly. |
| | 10:36 | Turned on big light. |
| 3 | 10:46 | People going to tables. |
| | 10:54 | Healing exercises. |
| | 11:35 | Break |
| 4 | 12:04 | Dough. |
| | 12:07 | Turned off big light. |

5	12:50	Eric.
	13:30	Lunch
6	15:00	Healing stories from TA's.
	15:25	Exercises on the stage.
	15:53	People going to tables.
	16:00	Healing exercises.
	17:10	End of exercises.
	17:27	Break
7	17:35	Eric.
	17:43	Healing exercises at tables.
	18:06	Eric.
	19:08	People leaving the room.

15th November (fig.24 and 25)

“GDV Compact“



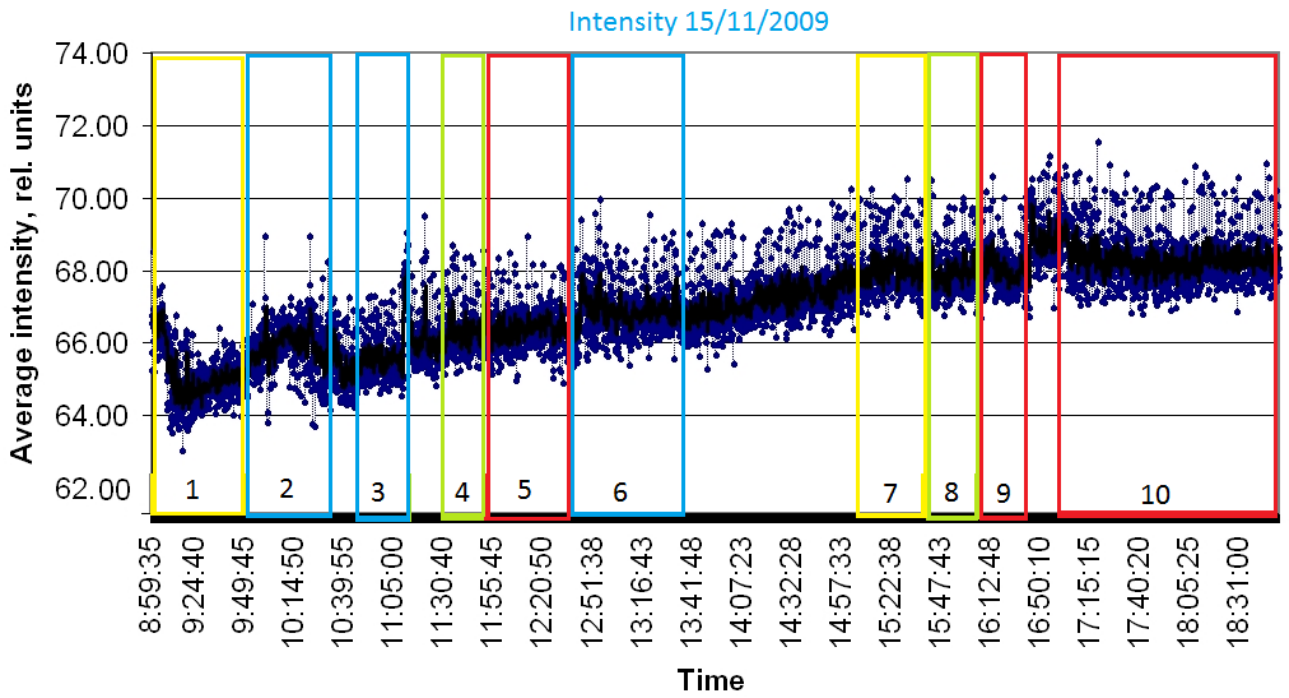
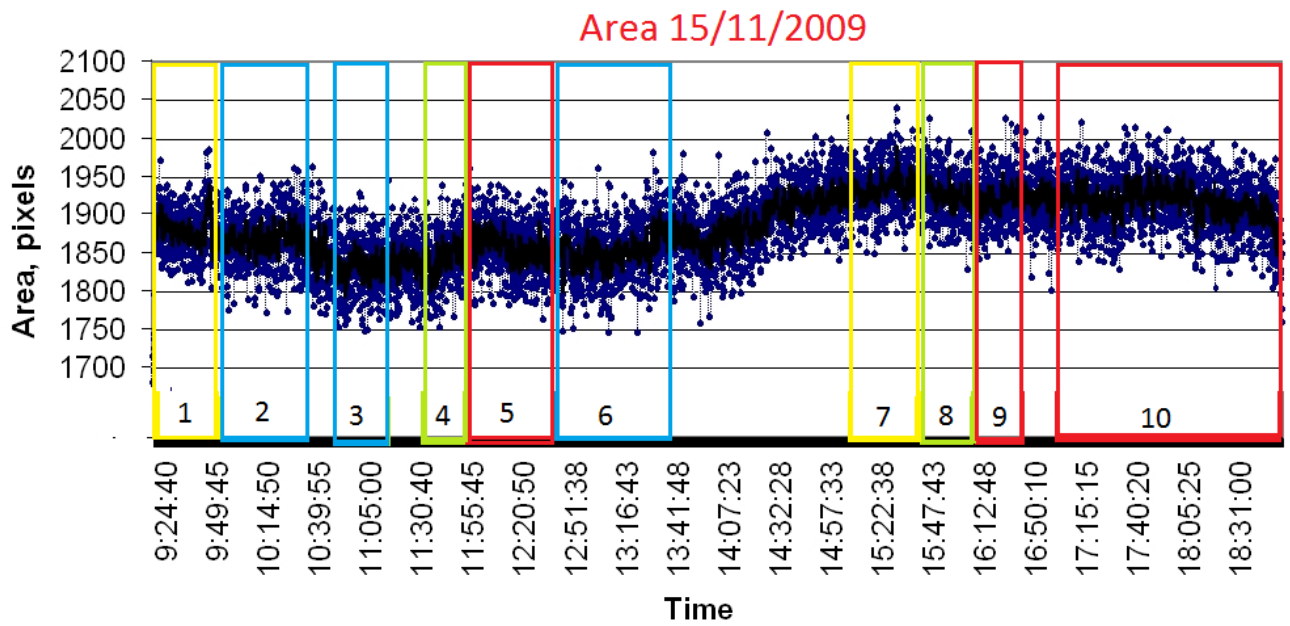


Fig.24. Time variations of Area and Intensity recorded by "Antenna" type sensor.



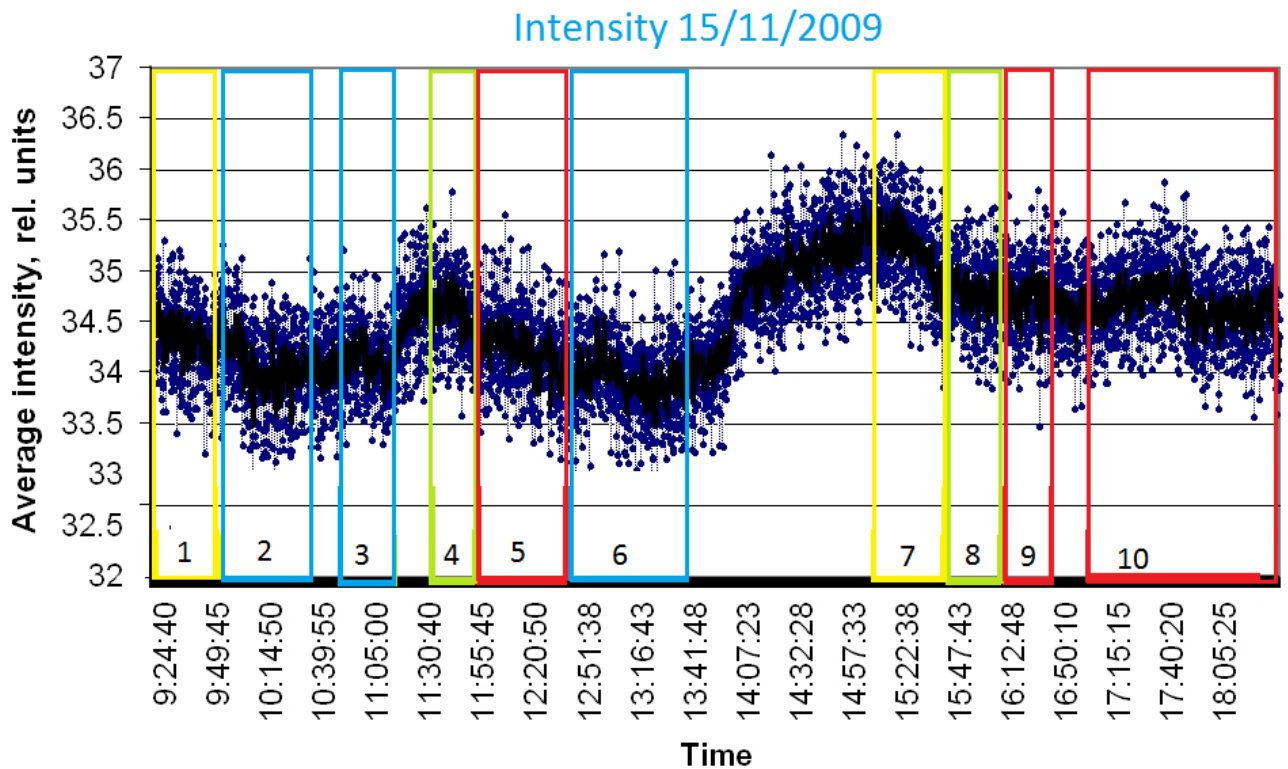


Fig.25. Time variations of Area and Intensity recorded by “Sputnik” type sensor.

- | | | |
|----|-------|------------------------------------|
| | 8:33 | People filling the room. |
| 1 | 9:00 | Different speakers on stage. |
| | 9:12 | Healing stories from TA's. |
| 2 | 9:48 | People going to tables. |
| | 9:51 | Start of exercises. |
| | 10:35 | End of exercises. Discussion |
| 3 | 10:48 | Exercises. |
| | 11:05 | End of exercises. Break. |
| 4 | 11:31 | Dough speaking. |
| 5 | 11:53 | Eric speaking. |
| 6 | 12:39 | People going to tables. Exercises. |
| | 13:31 | End of exercises. Lunch. |
| 7 | 15:05 | Kelly speaking. |
| 8 | 15:32 | Dough speaking. |
| 9 | 15:45 | Eric speaking. |
| | 16:42 | Compact buzzed. New series. |
| | 16:44 | Break. |
| 10 | 17:03 | Eric speaking. |
| | 17:45 | Experiment with 24 people. |
| | 17:52 | Eric speaking. |
| | 18:40 | Dough speaking. |
| | 18:44 | People leaving the room. |

As we see from the graphs, most of significant moments in different days of the sessions were reflected on the graphs. This may be presented as increase of parameters or separate peaks.

15/11 after presentation of Dough and Erick reaction to exercises was in decreasing of Intensity graph (area 6). We may conclude that after long session people were tired and subsequent break was reflected as increase in parameters.

Strong shifts on the presented diagrams were connected with presence or absence of people in the room (during lunch or break).

Because of very huge room all the influences were very weak and sensors registered influences, but shifts (connected with reconnective healing exercises) were small in comparison with previous measurements.

For example, only Eco-tester has registered the appearance of Eric Pearl on the stage on Friday evening 13/11 – shift in Average intensity parameter (19:48) was registered.

Sedona, December 4 – 6, 2009

December 4 (fig.26)

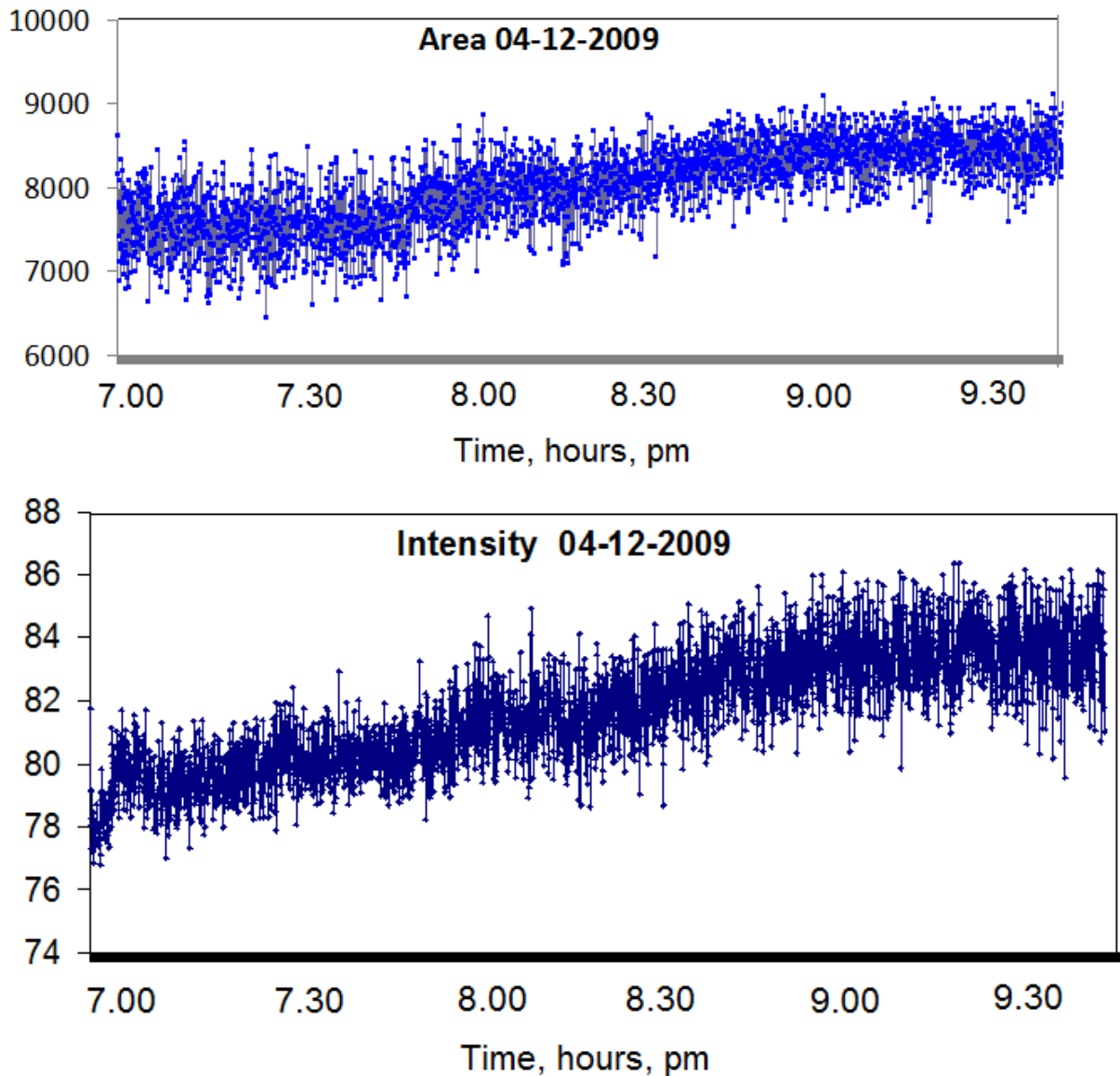


Fig.26. Time variations of Area and Intensity recorded by "Antenna" type sensor.

1858: Sensor activated. The seminar room was being prepared for the following day. RCP (Practitioners) + RCM (mentors) were arranging the space from Podium setting to ATD (Attendee) seating to MTB (Mass table bay) positioning. Volunteers for the seminar were also present in the set up process. Seating set up to accommodate 100 + participants.

2131: Sensor cycle concluded.

During workshop we see high increase both of Area and Intensity. After the end of workshop signal became stable.

December 5 (fig.27)

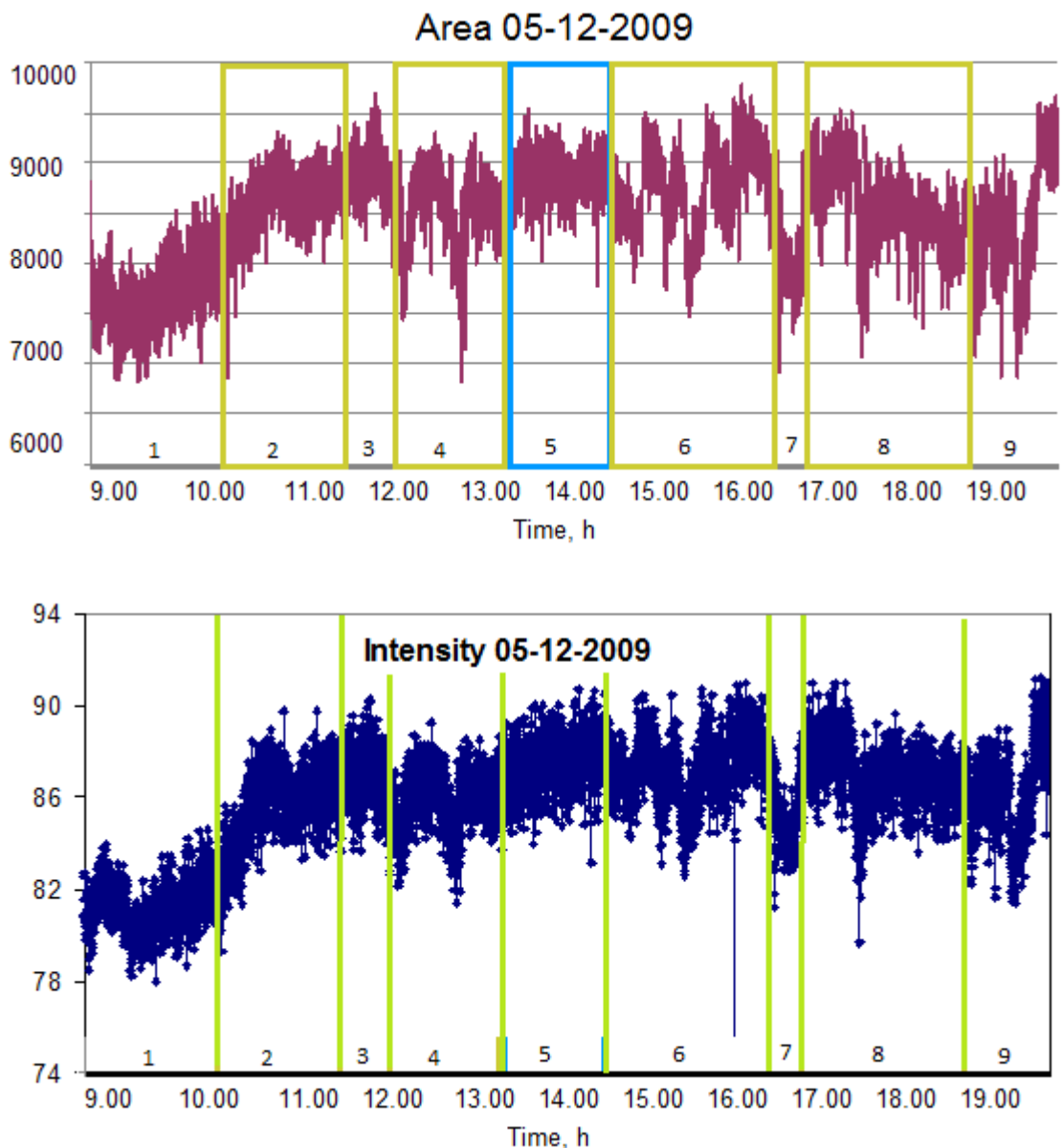


Fig.27. Time variations of Area and Intensity recorded by "Antenna" type sensor.

1. 0836 – Room prepared , Doug arrives, attendees arrive, RCP
1123 (Judaline) welcome address + outlines wk.end sch.
2. 0950 : Doug introduces RC w “arm raising” protocols. 1015 : ATD (8
1022 + F) participant on podium MT w Doug conveying RCF’s
(frequencies) till 1023 – 1046 : ATD (70 + F) with < 60 degree
radius of arm movement was on PMT (podium mass. table) w
Doug. 2 ATD’s were req. to assist in FFS (feel/find/stretch)
that inc. the 8 yr. yng. girl. The ATD on MT was able to raise
army over her head. 1047 – 1123 : Slinky/ping pong/pull &
stretch process w. partnering being conveyed w ATD
participation.
3. 1124 – Recess
1143
4. 1144 – Doug w TA’s on basics of table etiquette & outlining
1253 processes w direct participation. Doug prompts ATD’s on
conveying responses & recess for lunch.
5. 1254 – RCH sessions in progress in seminar room, lights dimmed &
1415 the space is v. quiet.
6. 1416 – Doug on podium reading from “Keys of Enoch”, some Q & A ,
1558 FFS explored. 1505 : All ATD’s to MTB & w TA’s, practical
processes explored, initiated & practiced. Mini power outage
(1539 to 1545) Response- feedback.
7. 1559 – Recess
1621
8. 1622 – Q & A & RC w animals conveyed by TA. Doug, HOH (hands
1825 on hlng – touching fingers to back) in process at MTB. A
focussed poll from group indicated 40% of ATD’s improved
finger contact w HOH while 30% of remaining ATD’s inferred
improved range.(1700 – 1726). FFS practices continue to be
imprinted to ATD’s. “Meditation connects one w the: infinite” -
Doug!
1826 – Session concludes at 1825 .Sensor recording data after
1920 conclusion of session. During this period we were conducting
studies on water bottles placed in all 4 corners of room + the
bottle by the side of podium where Doug conveyed

December 6 (fig.28)

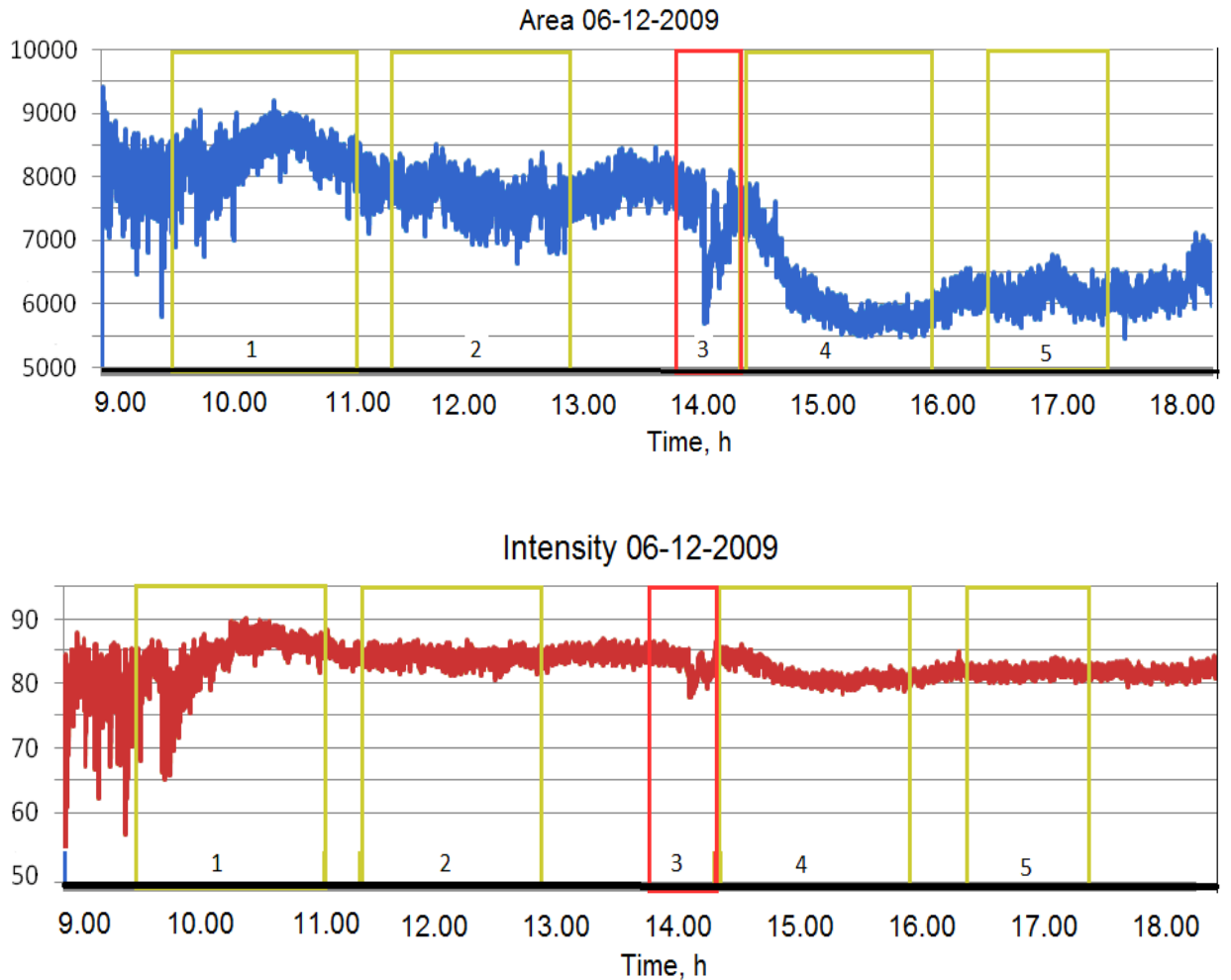


Fig.28. Time variations of Area and Intensity recorded by “Antenna” type sensor.

- 0857 – Room prep. & back ground activity
- 0933
- 1. 0934 – Doug opens the day w “Keys of Enoch” & provides response/action to 4 questions. “Proximal Distance” is explored & demo’d. w heightened attention from ATD’s.(1016 – 1021). ATD’s by groups are directed to MTB as Judaline orchestrates. Doug initiates & obtains feed back from ATD’s
- 1107
- 1108 – Recess
- 1125
- 2. 1125 – Doug conveys results of survey + personal process. “Holograph Hlng” is conveyed & ATD’s practice w ATD, (Domino)on podium MT. More of the RCHF(RC hlng. fre.) practiced by ATD’s. (1208 – 1250) at MTB
- 1253
- 1254 – Lunch recess
- 1350
- 3. 1350 -1411 Doug w a few RCP’s did a RCF initiation to bottled water so as to raise the pH from 7.4 to 8.0. This was done for

- 10 min. Results: The pH increase was not stable. Readings ranged from 7.6 to 7.7 & started dropping v. rapidly. pH readings were done w a digital pH meter.
4. 1411 – RCPractice conveyed by Doug as a model of practice & details. Eye hlng. process demo'd. ATD volunteers on MTB & exercise in session. Observations & insights conveyed.
1559
- 1600 – Recess
1624
5. 1625 – Doug w Q & A's ; session insights to ATD's; concludes w closed eye meditation. Seminar concludes!
1736

As we see from the graphs, strong effect was recorded in the first session, and very high reaction was registered at 1350 -1411 when Doug w a few RCP's did a RCF initiation to bottled water.

DISCUSSION

We had 13 sessions with Electrophotonic Sensor at the Reconnective events: 6 during conferences and 7 during workshops. At all sessions Sensor responded to significant events in the room, in most cases during presentations of Erick or Dough. At the same time behavior of the graphs was different in different sessions. We may define the following moments:

1. Area graphs had both ascending and descending response. We pay attention that numbers at the graphs are different due to using sensor elements of different construction. Finely the most sensitive "Sputnik" sensor was developed.
2. Area variations have been changing from 11% to 100% in different sessions (Table 7).
3. Recording lasted from 1h40 to 10h30. The level of variations did not depend on the length of a session.
4. During the conferences only some presenters stimulated the reaction of the sensor.
5. Control recordings in the laboratory without presence of people demonstrated variations of Area and Intensity at the level 3-7% without any specific moments (see examples below at fig.29).
6. Measurements in Amsterdam (11-2009) demonstrated less variations of a signal compared with measurements in the USA. The reason may be very big size of the auditorium where workshops took place.
7. Measurements taken with two independent sensors in parallel demonstrated very high consistency in recording significant events during workshop:
 - 11/13/2009 Decrease of Area in segment 1 of both graphs; Increase of Area in the beginning of segment 4 of both graphs.
 - 11/14/2009 Similar type of Area curves in segments 2 and 3 of both graphs; Increase of Area in segments 5-6 of both graphs; Increase of Intensity in segment 5 and 6 of both graphs.
 - 11/15/2009 Increase of Area in segment 7 of both graphs; Increase of Intensity in segments 3, 4 and 7 of both graphs.

All abovementioned features demonstrate that recorded variations of a Sensor signal was not just random, but were related to events in the room. They may be related both to the activity of the presenter and to the reaction of the audience.

From all the data we can make the conclusion that during sessions of Reconnective Healing structurization of a space in the auditorium takes place. The physical background of this effect needs attention and further investigation.

Table 7. Changes of Sensor parameters during sessions

Date, mmdyy	Type of event	Length of the session	Area changes	Intensity increase
91808	Conference	2h30	29%	
91908	Conference	1h40	40%	"+"
92008	Conference	3h30	67%	"+"
92108	Conference	4h00	33%	"+"
92509	Workshop	4h00	59%	"+"
92609	Workshop	9h30	100%	"+"
92709	Workshop	10h00	55%	
100309	Workshop	1h20	25%	"+"
100409-1	Conference	4h00	35%	
100409-2	Conference	3h30	16%	
111309-1*	Workshop	8h10	14%	
111309-2*	Workshop	8h10	13%	
111409-1*	Workshop	9h00	26%	"+"
111409-2*	Workshop	9h00	11%	"+"
11509-1*	Workshop	8h30	15%	"+"
111509-2*	Workshop	8h30	16%	"+"
120409	Workshop	2h30	32%	"+"
120509	Workshop	10h30	30%	
120609	Workshop	9h14	40%	

- measurements taken with 2 sensors of different construction in parallel

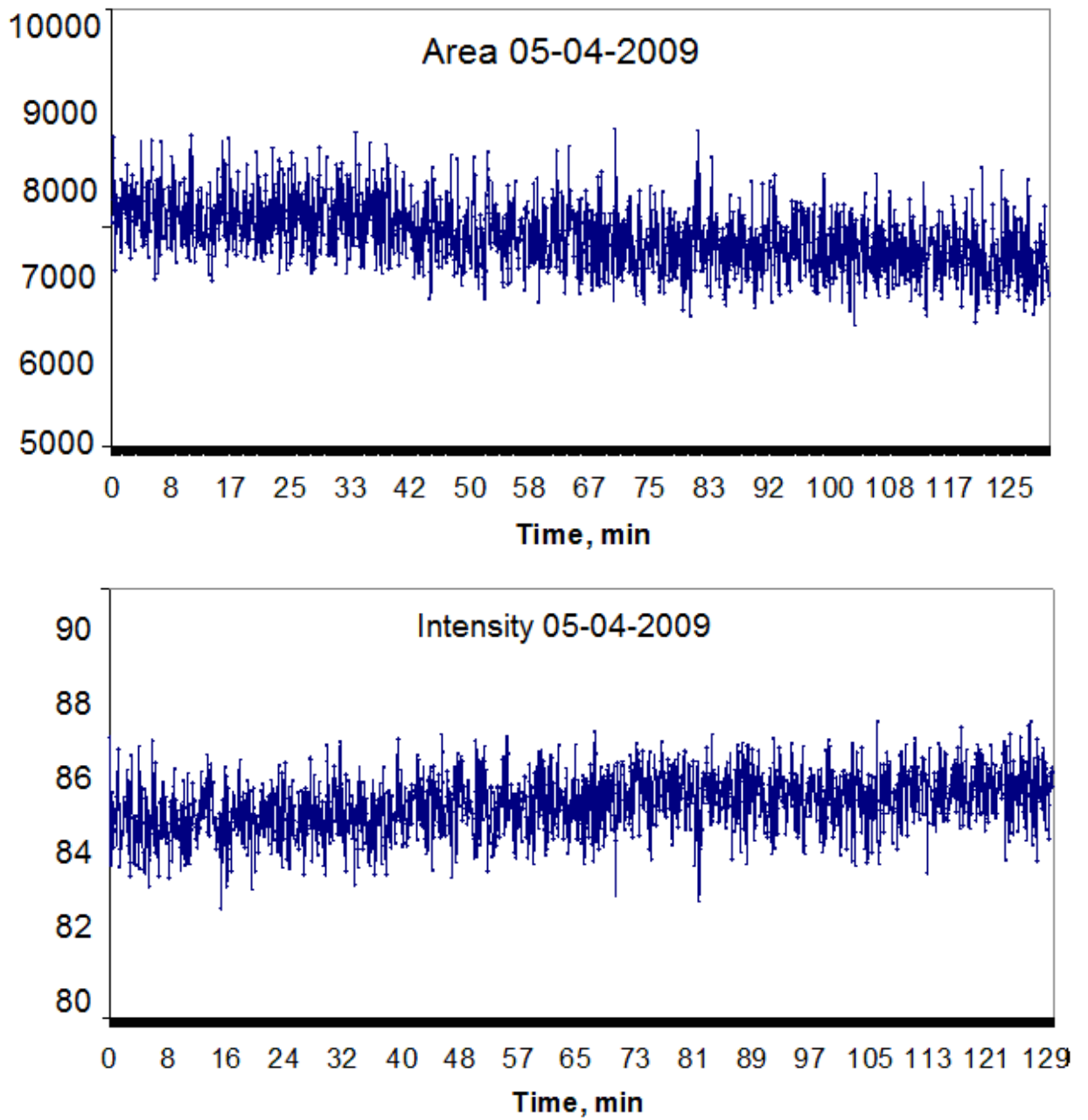


Fig. 29. Changes of parameters in control experiments.

SEMINAR WATER STUDY: DAY 1 & 2

Procedure:

1. (5) bottles of Arrow Head, a commercial drinking water was placed in the 4 corners of the room & the 5th was by the table adjoining the podium, which was placed in the middle of room from where Doug would be conveying to the attendees. Bottle classification: C1, C2, C3, C4, & S5.
2. Room layout: Chairs for seating 100+, arranged as an arc, podium in middle & massage tables on the other side of podium.
3. (5) Control bottles for study was placed behind the front desk of the resort.

Purpose of Study: To observe at the response of each days events from all the stations where the bottles were positioned.

C1-By research table;

C2 -MTB corner;

C3 - Next MTB corner;

C4 – RC info + educational corner;

S5 – Stage/Podium table.

Data Capturing sequence: All data capturing was done at the end of each days session from C1-C4 & S5. Data was captured with EPC Pro – 30 FPS – 5 sec duration.

Observations:

Day 1

C1 had very strong variations of a signal;

C2 had very strong variations of a signal;

C3 had very strong variations of a signal;

C4 had no data;

S5 quite stable signal;

Day 2

C1 had very strong variations of a signal;

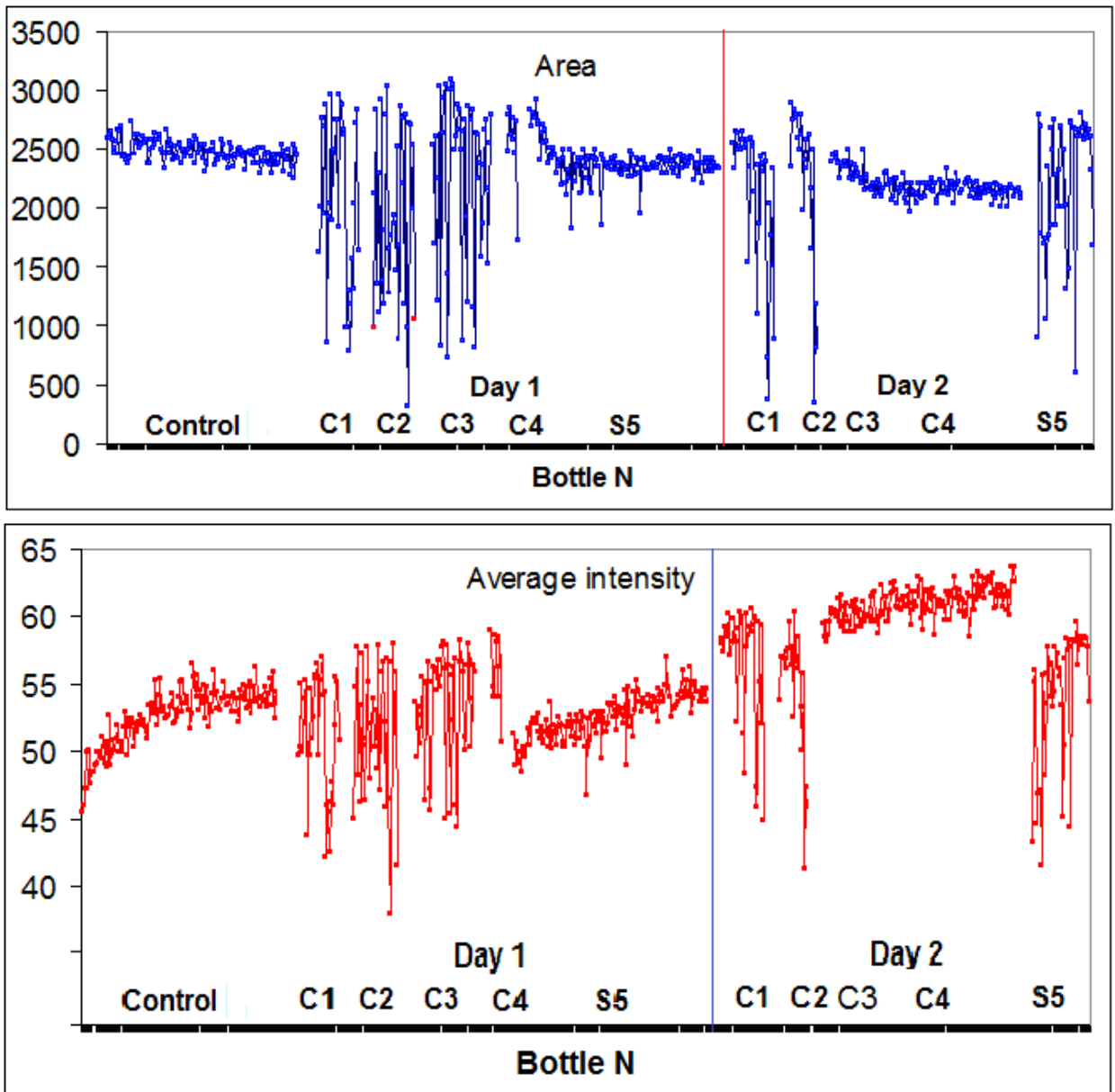
C2 had very strong variations of a signal;

C3 had no response;

C4 quite stable signal;

S5 had very strong variations of a signal.

The control bottles had no signal response.



RECONNECTIVE HEALING WATER STUDY

Procedure: Commercial bottled water (Arrow Head) was used for this study.

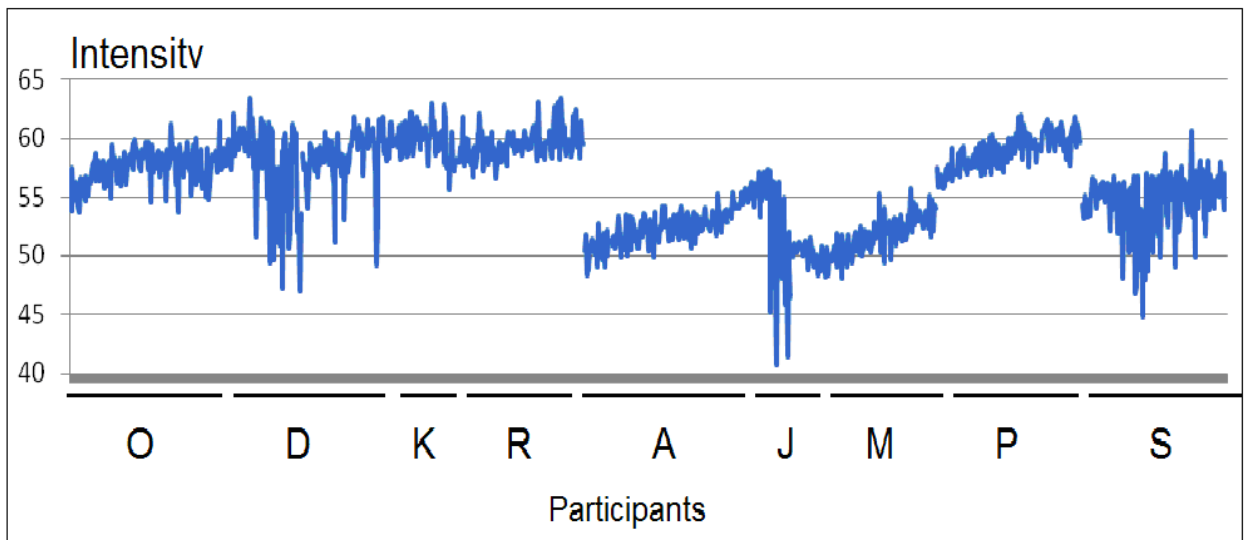
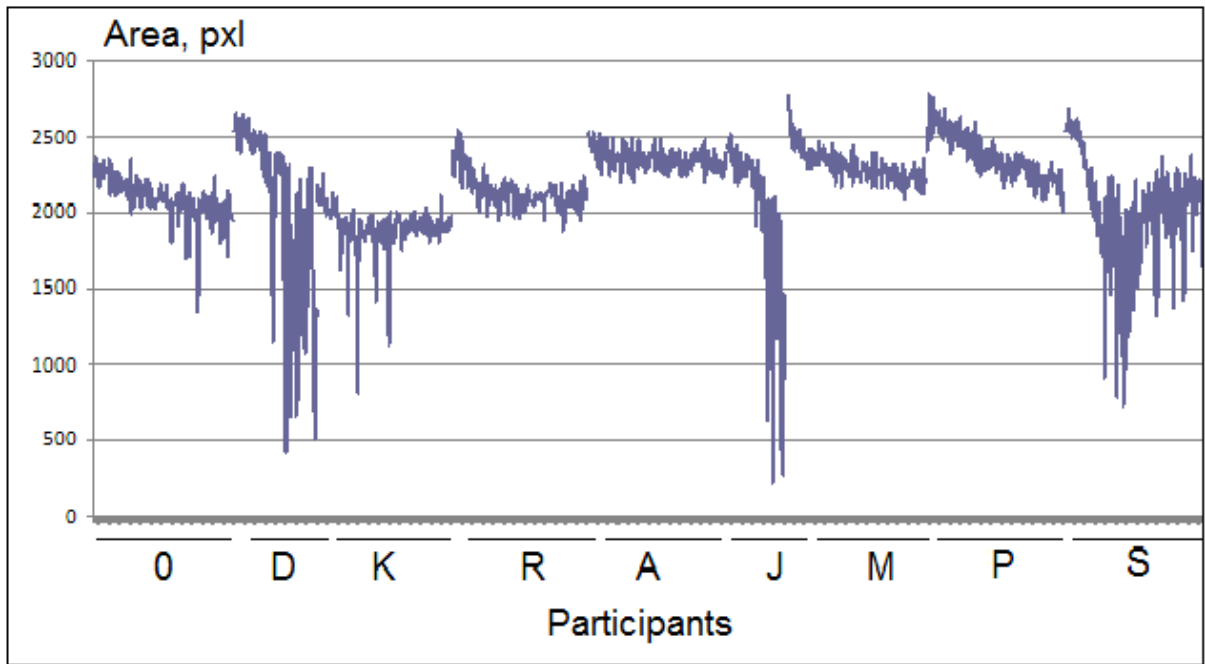
1. Each RCP would have a 10 min RCH session on a bottle & data was captured w EPC Pro.

8 participants whose initials are indicated are: D – Doug; K – Kevin; R – Renee; SA – Sally; J – Judaline; M – Michael; P – Patrice; S – Sabrina.

As we see from the graphs, all RCP had produced significant effects on water. The strongest effects was by Doug, Kevin, Judaline and Sabrina.

As people are 70% liquids, this gives us idea of the mechanism of influence to people.

Remarks: This is a pilot study initiated by Doug DeVito to observe if there are measurable patterns that can be observed.



DISCUSSION

In both modes of water study we may see statistically significant reaction of water to the process of Reconnective Healing.

In the first mode bottles were standing in the seminar room for a day and influence was lasting for a long time. At the same time we see that not all the water responded to the influence. This fact and comparing with a control water having no changes indicate that water have been structured under the influence of Reconnective Healing process. We may assume that structurization of space has non-uniform character in the room.

This type of experiments should be repeated.

Significant structurization of water took place under the influence of directed Reconnective Healing by the trainers. Effect was different for different people which may be related to different modalities of their influence.

CONCLUSIONS

We have observed experimental data collected during 14 months with different EPC/GDV instruments, by different researchers, and in different parts of the world. All these data are quite consistent and have very similar type of variations. They all suggest that in the process of Reconnective Healing structurization of space in the auditorium takes place.

People may have different response to this process, and this response may take long time. We expect that Reconnective Healing starts harmonization of the energetic processes in the body, and depending on initial conditions this process may take different time and have different outcome. Long-term observations of participants conditions with collecting data on the Quality of Life and wide spectrum of physiological parameters would be strongly recommended.

Sensor data undoubtedly demonstrate that Reconnective Healing have strong positive environmental effects which may be expected extend much broader than the range of the auditorium. It is important to compare effects of Reconnective Healing by individuals or by a group of experienced people.

Water experiments demonstrated that water change its properties under the influence of Reconnective Healing both in the case of directed attention and with bottles standing in the room. Control experiments had no effects at all. We keep in mind that human body is 70-80 % water, so it may tell us about mechanisms of Reconnective Healing influence to the body physiology.

More experiments should be conducted to support presented suggestions.

References

-
- ⁱ Korotkov K., Korotkin D. Concentration dependence of gas discharge around drops of inorganic electrolytes. *J of Applied Physics*, 2001, 89, 9, 4732-4737.
- ⁱⁱ Korotkov K. *Human Energy Field: Study with GDV Bioelectrography*. Fair Lawn, NJ: Backbone Publishing Co. 2002
- ⁱⁱⁱ Korotkov K. *Aura and Consciousness: New Stage of Scientific Understanding*. St. Petersburg, Russia: State Editing and Publishing Unit "Kultura". 1998.
- ^{iv} Korotkov K., Williams B., Wisneski L. Biophysical Energy Transfer Mechanisms in Living Systems: The Basis of Life Processes. *J of Alternative and Complementary Medicine*, 2004 10, 1, 49-57.
- ^v Polushin J, Levshankov A, Shirokov D, Korotkov K. Monitoring Energy Levels during treatment with GDV Technique. *J of Science of Healing Outcome*. 2:5. 5-15, 2009
- ^{vi} Rgeusskaja G.V., Listopadov U.I. Medical Technology of Electrophotonics – Gas Discharge Visualization - in *Evaluation of Cognitive Functions*. *J of Science of Healing Outcome*. V.2, N 5, pp.15-17, 2009
- ^{vii} Owens J, Van De Castle R: Gas discharge visualization (GDV) technique; in Korotkov K (ed): *Measuring Energy Fields State of the Science*. Fair Lawn, NJ, Backbone, 2004, pp 11–22.
- ^{viii} Bundzen P. V., Korotkov K. G., Korotkova A. K., Mukhin V. A., and Priyatkin N. S. Psychophysiological Correlates of Athletic Success in Athletes Training for the Olympics *Human Physiology*, Vol. 31, No. 3, 2005, pp. 316–323.
- ^{ix} Bell I., et.al. Gas Discharge Visualisation Evaluation of Ultramolecular Doses of Homeopathic Medicines Under Blinded, Controlled Conditions. *J of Alternative and Complementary Medicine*, 2003, 9, 1: 25-37
- ^x Korotkov K., Krizhanovsky E., Borisova M., Hayes M., Matravers P., Momoh K.S., Peterson P., Shiozawa K., and Vainshelboim A. The Research of the Time Dynamics of the Gas Discharge Around Drops of Liquids. *J of Applied Physics*. 2004, v. 95, N 7, pp. 3334-3338.
- ^{xi} Vainshelboim A.L., Hayes M.T., Momoh K.S. *Bioelectrographic Testing of Mineral Samples: A Comparison of Techniques*. *Journal of Alternative and Complementary Medicine*. 2005: Vol. 11, No. 2, pp. 299-304.
- ^{xii} *Measuring Energy Fields: State of the Art*. GDV Bioelectrography series. Vol. I. Korotkov K. (Ed.). Backbone Publishing Co. Fair Lawn, USA, 2004. 270 p.
- ^{xiii} Korotkov K.G., Matravers P, Orlov D.V., Williams B.O. Application of Electrophoton Capture (EPC) Analysis Based on Gas Discharge Visualization (GDV) Technique in Medicine: A Systematic Review. *The Journal of Alternative and Complementary Medicine*. January 2010, 16(1): 13-25.
- ^{xiv} Korotkov K, Orlov D, Madappa K. New Approach for Remote Detection of Human Emotions. *Subtle Energies & Energy Medicine* • V 19, N 3, pp 1- 15, 2009