

Redstor backup & recovery

Give customers streamed on-demand
access to their data



Redstor protects an entire infrastructure,

whether it is physical, virtualised or in the
cloud.

Quickly and easily restore your customers' data to its original location or a new location.

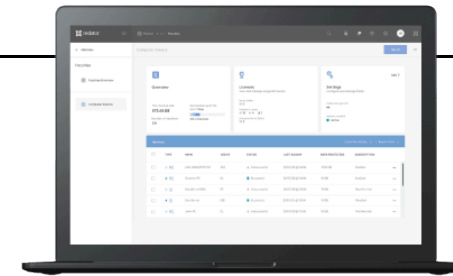
Streamed, on-demand access to all data enables customers to meet Recovery Time Objectives easily – and radically reduces the devastating effects of security incidents, data breaches and hardware failures.

Redstor's unique technology helps more than 40,000 customers around the world:

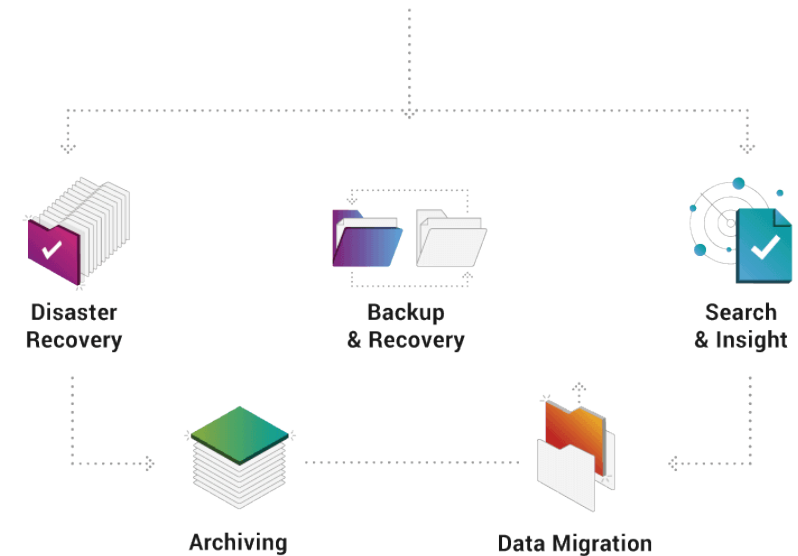
- Simplify the task of backing up critical business data and systems
- Restore data on demand and instantly in the event of an issue

Our pioneering data management service offers more than just backup and recovery. It also includes:

- **Archiving**
- **Disaster Recovery**
- **Search & Insight**



Single control centre



See the future of data management. Now.



Speed up - Onboard faster, convert faster, provision faster, bill faster and scale faster than ever before. Get customers' data protected in hours not days. With our automated, self-service portal, what may have taken days will now take hours.



Control – A feature-rich, self-service portal enables MSPs to do everything for themselves via a simple, powerful interface. Avoid the frustration of waiting for vendor bottlenecks to clear. Take full control of trials and account limits and streamline billing (24/7 support available).



Scale - Easily scale protection as demand changes with a cloud-based platform. No hardware costs or delays, just instant growth or reductions and predictable opex-only billing.



Simplify – Deploy all agents and control all of your customers' data, regardless of where it resides, all within a single control centre. Easy account management and complete visibility saves on time and overheads.

[TRY FOR FREE](#)

Protect

Fully customisable and seamlessly scalable, Redstor supports a wide range of operating systems and applications

Fully customisable and seamlessly scalable, Redstor supports a wide range of operating systems and applications, running on servers, desktops and tablets.



Operating systems:

- Windows 2008 R2 and above, Windows 8.1 and above (plus legacy support for Windows 2003, Windows XP)
- Wide range of Linux distributions e.g Red Hat, Ubuntu, Centos
- Mac OS Catalina 10.15 onwards

Applications (on prem):

- Microsoft SQL (2008 R2 onwards)
- Exchange (2010 onwards)
- Capita SIMS, FMS + Discover (for education)
- Integrates with native operating system features like VSS and the Backup Operator API for reliable, application-consistent protection
- Script plug-in support for bespoke applications and databases e.g. MySQL and PostgreSQL

Cloud to cloud

- Microsoft 365 - OneDrive, SharePoint, Exchange, Teams

A diverse backup strategy is vital, not least for compliance purposes, if an organisation is to avoid being wholly dependent on a single cloud vendor.

Redstor allows you to ensure customers can:

- **Retain control of data and act immediately in event of disaster rather than rely on help to recover lost data**
- **Recover directly back to Microsoft 365 and G Suite, providing protection against human error, hackers and short-term retention policies that are difficult to track**
- **Access all data – even after a user has been removed from Active Directory**
- **Migrate from one cloud service provider to another seamlessly**
- **Address e-discovery requirements and General Data Protection Regulation compliance**

- G Suite - Google Drive, Gmail

Network Attached Storage (NAS):

- No additional licensing
- Supported via UNC, irrespective of vendor e.g NetApp, Synology, Dell EMC

Hardware

Physical

- Laptops, work stations, servers – all supported on a single client

Virtual machines (guest-based backup)

- VMware
- HyperV
- VirtualBox
- XenServer
- Acropolis (AHV)

Hyperscale cloud (guest-based backup)

- Azure

Redstor is a cloud-first data management solution that protects data stored on-prem, in the cloud or in a hybrid environment.

- AWS
- GCP

Installation

- Deploy a device in just a few minutes
- Easily repeatable across site(s)
- Option to have initial backup seeded (all included as part of service)

Synthetic full backup

- After the first, full backup, every subsequent backup is obtained adopting a forever incremental approach (only unique differences since last backup are sent)

Security and data privacy

- Everything encrypted at source, using AES256 (GCM) encryption, and further protected using 128-bit SSL/TLS ciphers during transmission
- Data is sent over 128bit encrypted tunnel to Redstor's data centres
- Encryption key is unique to every client, chosen and known only by customer
- Redstor are ISO 9001 (quality management) and ISO 27001 (information security) certified

Data centres

- Partners include Equinix, Internet Solutions, Teraco and Everest
- Data continuously mirrored from primary centre to secondary centre with seamless failover
- Enterprise-grade infrastructure with high levels of redundancy
- Connections include peering fabric of LINX, one of largest metro area internet exchanges in Europe
- Border Gateway Protocol allows Redstor to peer seamlessly with the internet

- On-net connectivity to more than 130 data centres globally
- Guaranteed data sovereignty and geographically local services
- Partnership with multiple carriers provides dense reach throughout the world.
- 24 x 7 x 365 security, including doors secured with biometric hand geometry readers
- Data centres have fuel onsite to provide 24 to 48 hours of emergency power, using backup generators, and Redstor has guaranteed fuel-delivery contracts to replenish those supplies.

Option of local copy

- For hybrid deployment, negating need for bespoke hardware appliances
- Available on local disk or network share for LAN speed recoveries
- Configurable local retention independent of the cloud copy
- Not on the critical path for increased resiliency and availability of data

Manage

Simple, easy management from one single control centre

Full, policy-driven automation

- Schedule frequency – e.g specific days, each day, multiple times per day
- Customer option to throttle bandwidth to minimise impact on network

Backup exclusions and profiling

- Set policies against multiple devices (avoid backing up anything that is not regarded as important e.g. users' MP3 files)

Single console

- Manage backups and restores for all devices centrally through one intuitive interface
- Borderless visibility across entire data set
- Users can create schedules, adjust retention policies, configure bandwidth usage

Enterprise reporting

- Customised reporting to evidence compliance, carry out auditing easily
- Full suite of predefined reports that can be run ad-hoc
- Set automatic email notifications for single or multiple recipients
- Schedule client-side reports in backup client
- Customers with larger estates able to use platform reports if more convenient

Flexible retention

- Configure retention periods and archive to suit organisation and comply with legal requirements e.g 60 days of daily incremental backups plus monthly backups going back seven years

Transparent and predictable pricing

- You are only charged for amount of data Redstor protects, NOT what Redstor ends up storing e.g. you protect 10TB and after nine months incremental backups account for extra 1TB, but you still only pay for 10TB

Extremely bandwidth efficient

- Options of client-side and platform-side compression and deduplication
- Use of binary or block-level patching techniques together with compression and client-side deduplication ensures extremely high levels of efficiency, radically reducing costs
- Redstor detects when connection is metered, allowing customer to avoid transmitting any data over expensive network
- Disruptions in process can be resumed from the last byte sent, eliminating need to re-transmit partially transferred files
- Intelligent streaming backup technology significantly reduces required local disk usage, to as little as 0.01% of the data selected for backup
- Service can be used with a connection as low as 1Mb/s

Recover

Whether it's ad-hoc file recoveries or full system restores, Redstor ensures business-critical data is always available instantly, and at no extra charge.

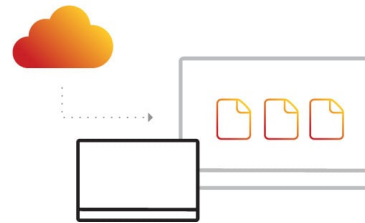
InstantData™

Whether it's ad-hoc file recoveries or full system restores, Redstor ensures business-critical data is always available instantly, and at no extra charge. Restores can be carried out from anywhere, at any time to wherever is required.



Permanent

- Recover files directly to server when disaster strikes, ending downtime
- Gain immediate access to any backed-up files and start working on them without delay
- Stream business-critical data from any location
- While rest of data is restored behind the scenes, users can start accessing the files that they need immediately
- Write new data to files while they restore



Temporary access

- Data browsable through Windows Explorer (access data as if it were located on a local drive)
- Drill down to various backup dates
- Open files directly or "drag and drop" from InstantData™ drive to location of choice (removing complexity from operational restores)
- Seamlessly restore blocks of data rapidly and on demand (only what you're accessing gets streamed)



Full System Recovery

- Automate recovery of systems (taking stress and complexity out of disaster recovery)
- Remove operational complexity of recovering lost server by reassembling physical or virtual system directly for use in VMware, Hyper V, Azure, AWS
- Bare-metal recovery

Customers also have the ability to recover files, folders, Exchange, SQL, 365 and G Suite data etc through the client interface. Those restores can all be instigated through the management console.

Snapshot exports, containing all customers' backed up data, can also be provided where requested.

The image displays the Redstor management console interface on a laptop. The interface is divided into several sections:

- Header:** Redstor logo, navigation icons, and user profile 'JK'.
- Left Sidebar:** 'Machines' and 'Faculties' sections. Under 'Faculties', 'Computer Science' is selected.
- Main Content Area:**
 - Overview:** Shows 'Total backup size 956 MB' and 'Backup (7 days) 100%'. Includes a progress bar and status indicators for 'Backups in progress'.
 - Backup Selection:** 'Files and folders in backup set'. Includes toggle switches for 'Full System Backup' and 'Remote access enabled'.
 - Backups Table:** A table with columns: BACKUP, DURATION, DATA PROTECTED, PROTECTED FILES, DATA TRANSFERRED.
- Right Panel:** 'Licences' and 'Settings' sections.
- Bottom Section:** A 'Machines' table with columns: TYPE, NAME, AGENT, STATUS, LAST BACKUP, DATA PROTECTED, SUBSCRIPTION.

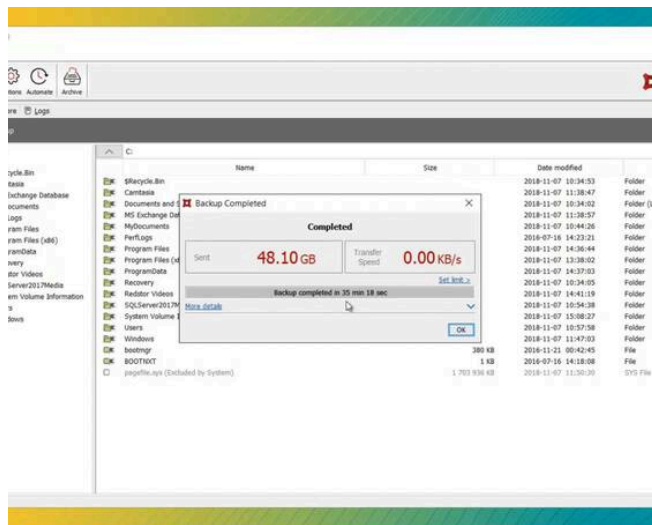
BACKUP	DURATION	DATA PROTECTED	PROTECTED FILES	DATA TRANSFERRED
17/05/20 @ 19:00	00:01:46	100 MB	3640	100 MB
16/05/20 @ 19:00	00:01:52	100 MB	3640	100 MB
15/05/20 @ 19:00	00:01:54	100 MB	3640	100 MB
14/05/20 @ 19:00	00:02:00	100 MB	3640	100 MB

TYPE	NAME	AGENT	STATUS	LAST BACKUP	DATA PROTECTED	SUBSCRIPTION
	WIN-896552HW9	ESE	Unsuccessful	21/07/20 @ 20:00	1250 GB	Enabled
	Graeme-PC	DL	Successful	21/07/20 @ 20:00	10 GB	Enabled
	DevServer202	SE	Unsuccessful	21/07/20 @ 20:00	15 GB	Machine trial
	Dev-Server	ESE	Successful	21/07/20 @ 20:00	12 GB	Disabled
	Jeno-PC	DL	Unsuccessful	21/07/20 @ 20:00	15 GB	Machine trial

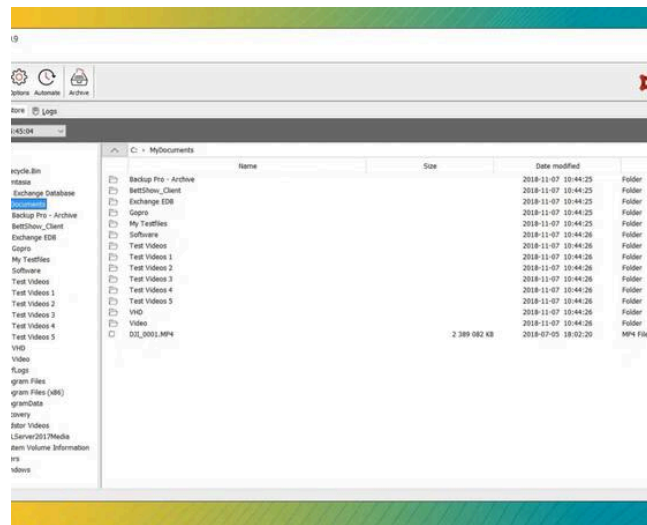
A panoramic view of the London skyline, including the Shard, the Gherkin, and the Walkie-Talkie, under a blue sky. The image is overlaid with a semi-transparent blue and purple graphic on the left side.

Demo videos

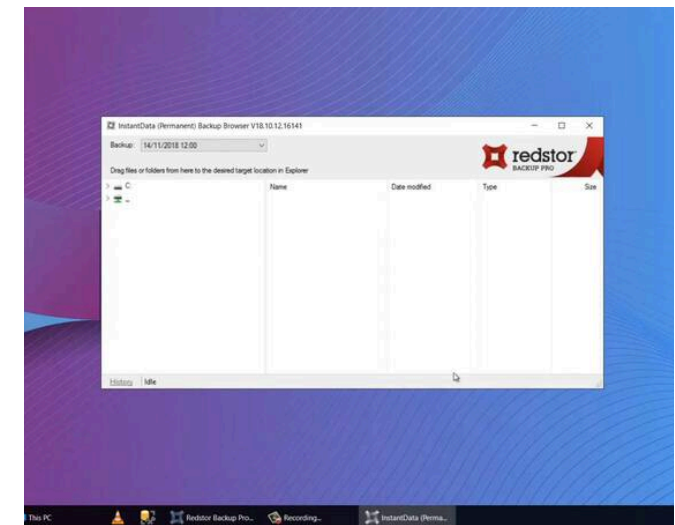
Backup selections



Data recovery



Recovery with InstantData



TRY FOR FREE

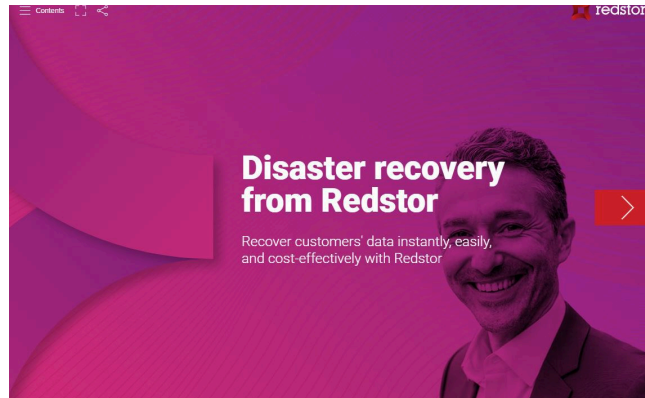


Brochures and datasheets

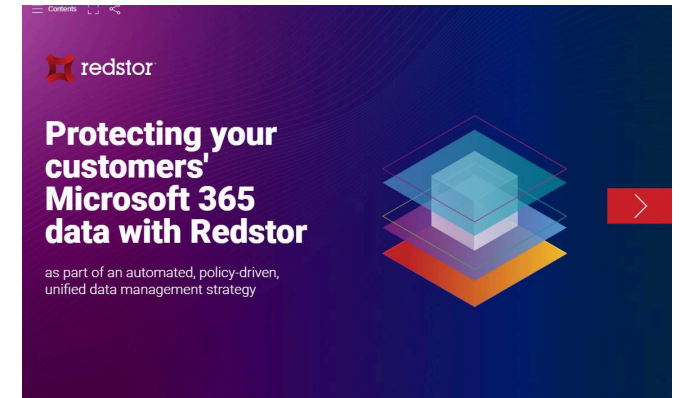
Links to brochures



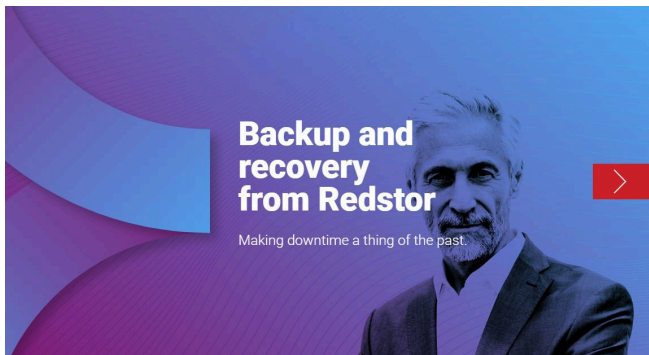
Archiving brochure for partners



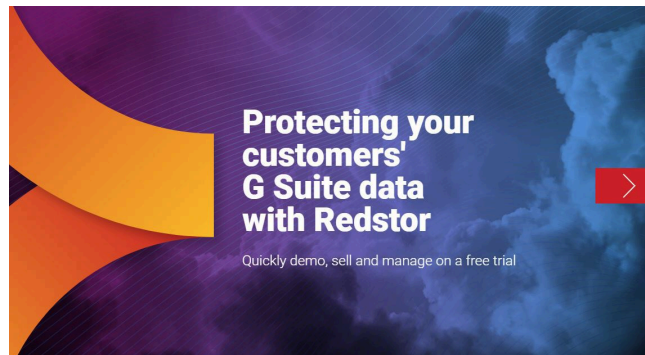
Disaster recovery brochure for partners



Microsoft 365 brochure for partners



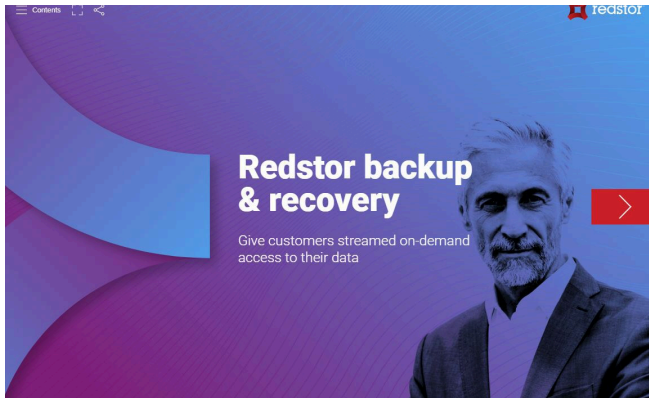
Backup and recovery brochure for partners



G Suite brochure for partners

TRY FOR FREE

Links to datasheets



Backup and recovery datasheet for partners



G Suite datasheet for partners



Microsoft 365 datasheet for partners

TRY FOR FREE

About Redstor

Data management for an on-demand world.



We are disrupting the world of data management with our pioneering technology, which provides borderless visibility and on-demand access to all your data, wherever it is stored, through a single control centre. Trusted by more than 40,000 clients and 350 partners, we use our proven, industry-leading technology to help you discover, analyse, control and protect your critical data.

TRY FOR FREE

Data Management for an on-demand world. Take it as Red.

Redstor is available worldwide through a network of resellers. For further information please visit www.redstor.com



Thank you for reading

Redstor Backup & Recovery Datasheet

