

SCHULTE®

2500 GIANT

REEL TYPE ROCK PICKER

Published 08/04

S/N R10000383312 - R10000432404 inclusive

Part No. R100-010P

PARTS MANUAL

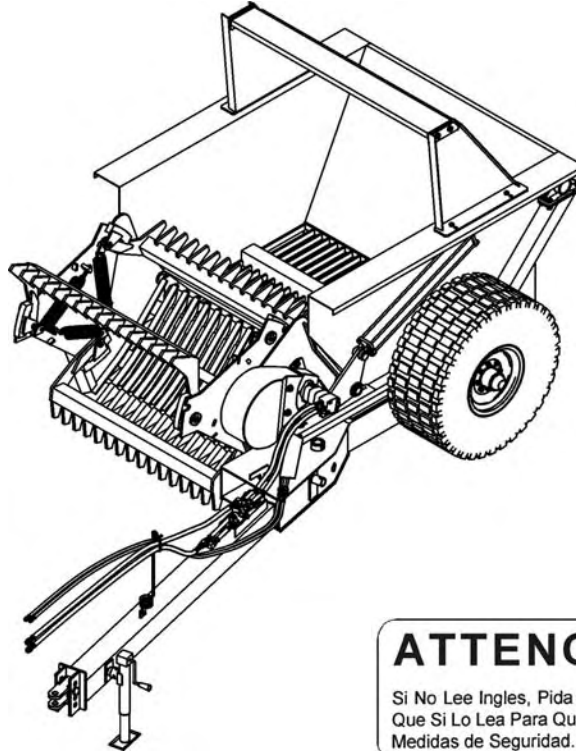


An Operators Manual with **IMPORTANT** Safety, Assembly, Operation and Maintenance information was packaged with this Parts Manual during final inspection at the factory. If the Operators Manual is missing at any time, please contact Schulte Industries Ltd. at (306) 287-3715 to receive your free replacement manual.

NESSA

www.nessainc.com

73747 130TH ST
ZEARING IA 50276
☎ 641-487-7608
INFO@NESSAINC.COM
WWW.NESSAINC.COM



ATENCIÓN!

LEA EL INSTRUCTIVO

Si No Lee Ingles, Pida Ayuda a Alguien
Que Si Lo Lea Para Que le Traduzca las
Medidas de Seguridad.



Schulte Industries Ltd.

P.O. Box 70
Englefeld Saskatchewan
Canada S0K 1N0
Tel. (306) 287-3715
Fax. (306) 287-3355
Parts Fax. (306) 287-4066
Email: info@schulte.ca



© 2004 Alamo Group Inc.

PARTS ORDERING GUIDE

The following instructions are offered to help eliminate delay and error in processing purchase orders for the equipment in this section.

1. The Purchase Order must include the name and address of the person or organization ordering the parts, who should be charged, and if possible, the serial number of the machine for which the parts were ordered.
2. The Purchase Order must clearly list the quantity of each part, the complete and correct part number, and the description of the part.
3. Schulte Industries Ltd reserves the right to substitute parts where applicable.
4. Schulte Industries Ltd reserves the right to change prices without prior notice.

NOTE: Please refer to the Safety Section in the front of the Operators Manual for the proper Part Number when ordering Replacement Safety Decals. Safety decals are available free of charge from the Schulte Parts Department.

NOTE: If the Operators Manual does not accompany this Parts Manual please obtain one, free of charge from the Schulte Parts Department. DO NOT operate this implement unless you READ, UNDERSTAND, and FOLLOW the Safety and Operation instructions contained in the Operators Manual

NOTE: Please note that the appearance of some parts may vary from the artwork shown in the Manual.



For maximum safety and to guarantee optimum product reliability, always use genuine Schulte Parts. The use of inferior replacement parts may cause premature or catastrophic failure which could result in serious injury or death. Direct any questions regarding parts to:

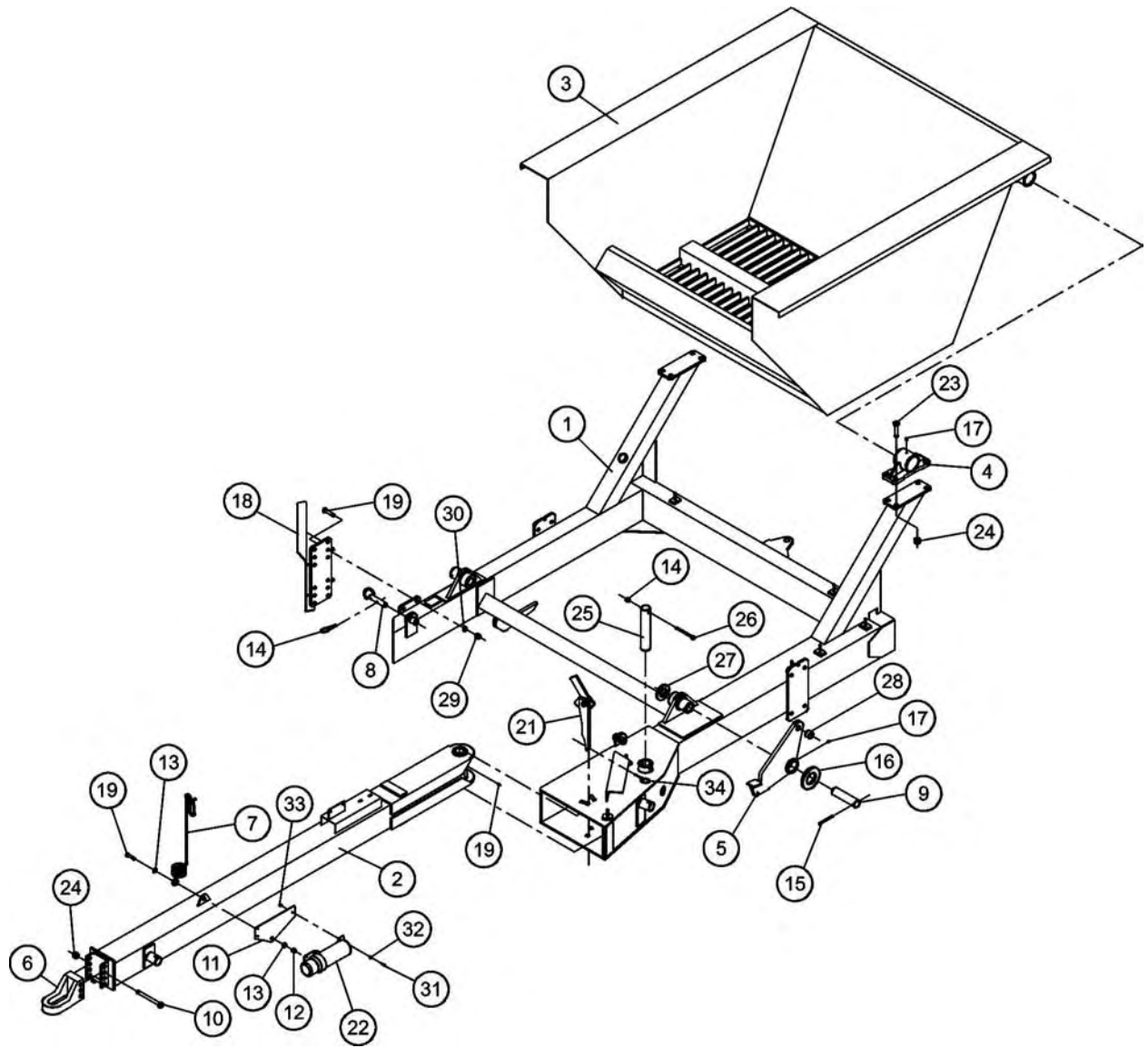
Schulte Industries Ltd ®
P.O. Box 70
Englefeld, Saskatchewan
Canada S0K 1N0
Phone: (306)-287-3715
Parts Fax: (306) 287-4066
Email: info@schulte.ca

SCHULTE®

TABLE OF CONTENTS

MAIN FRAME AND BUCKET	3
REEL AND GRATE	5
HUB AND AXLE ASSEMBLY	7
HITCH JACK, SIDE WIND 10" CROWN (232-500)	9
TOW CLEVIS	10
ROCK DEFLECTOR KIT (73-00)	11
HYDRAULIC CIRCUIT	12
HYDRAULIC DRIVE ASSEMBLY	13
HYDRAULIC MOTOR, CHAR LYNN, 14.9 in ³ (116-006)	15
MOTOR VALVE KIT, MAIN ASSEMBLY (R100-200)	17
MOTOR VALVE KIT, ELECTRICAL ASSEMBLY	18
HYDRAULIC CYLINDER, 3 x 36 TC MONARCH (100-3271)	19
TRANSPORT KITS	20
Safety Chain (S000-010)	20
Transport Light Kit (S000-035)	20
PARTS INDEX	21

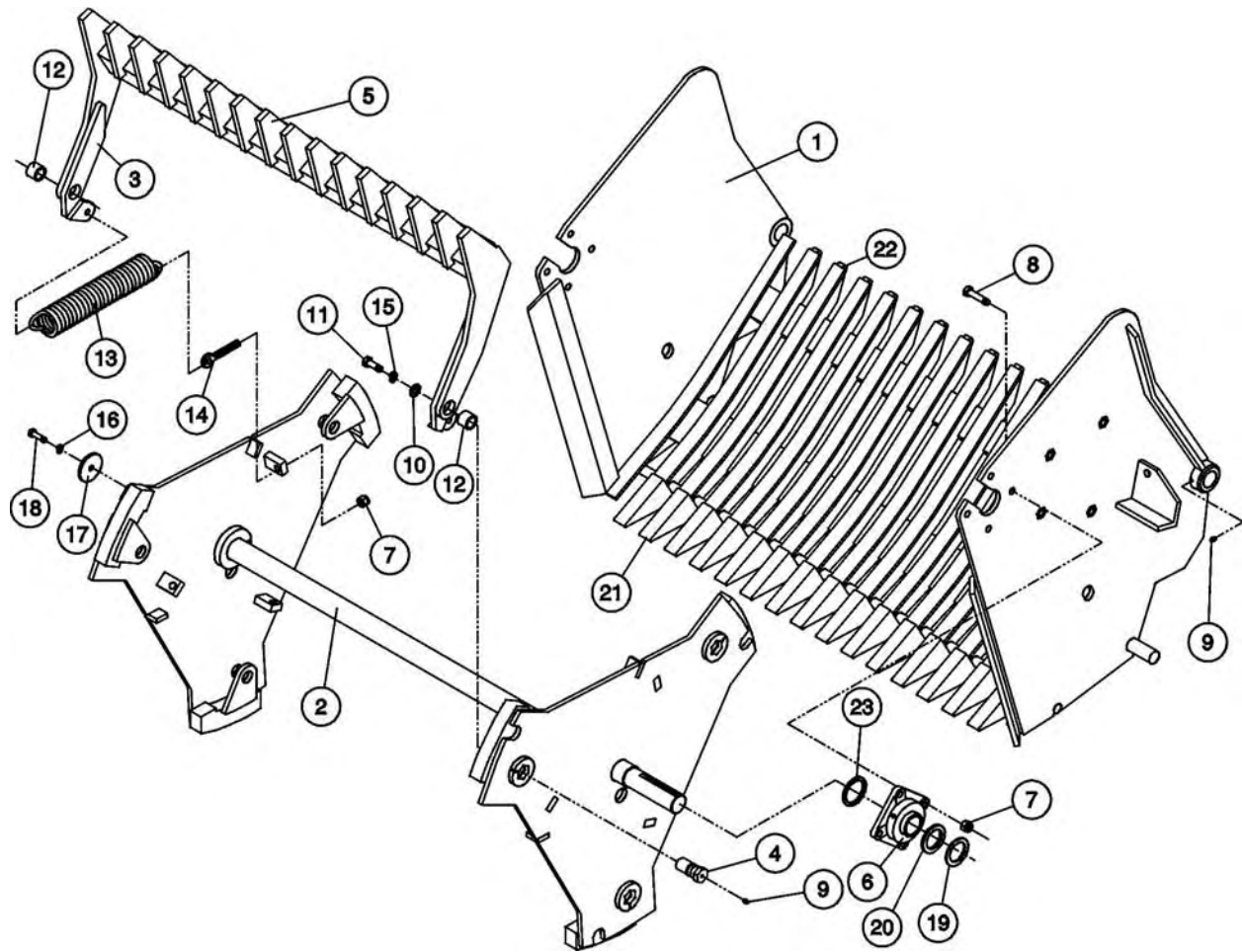
MAIN FRAME AND BUCKET



MAIN FRAME AND BUCKET

Ref.	Part No.	Description	Qty.
1	R100-101	Main frame	1
2	R100-110	Hitch pole	1
3	R100-120	Bucket	1
4	R100-130	Bucket bearing	2
5	R100-125	Lift link	
		Sn# R10090002701 to R10090077712	2
5	R100-127	Lift link	
		Sn# R10090078808 to Current	2
6	231-020	Base hitch	1
7	228-012	Hose organizer	1
8	R100-105	Grate lock-up pin	2
9	R100-117	Grate pin	2
10	250-107	Bolt, 3/4 x 6 UNC	3
11	C000-355	Manual mount	1
12	270-007	Lock nut, 1/2 UNC	1
13	256-006	Flat washer 5/8"	2
14	271-051	Hairpin, 3/16 wire	2
15	262-009	Roll pin, 3/8 x 3-1/2	2
16	256-052	Flat washer, 2-1/2 x 3-9/16	2
17	273-006	Grease nipple, self tapping	5
18	90-05	Rock deflector	1
19	250-090	Bolt, 5/8 x 2	5
20	270-004	Lock nut, 5/8 UNC	2
21	R100-114	Wedge lock assembly, Giant	1
22	280-201	Manual canister	1
23	250-114	Bolt, 3/4 x 2-1/2 UNC	8
24	270-001	Lock nut, 3/4 UNC	11
25	R100-116	Hitch pivot pin	1
26	250-049	Bolt, 1/2 x 4 UNC	1
27	256-079	Bushing, 1-3/4 x 3 x 10ga.	A/R
27	256-081	Bushing, 1-3/4 x 3 x 14ga.	A/R
28	362-010	Tension bush. 1 x 1-1/4 x 3/4	2
29	257-019	Nut, 5/8" UNC	4
30	255-005	Lockwasher, 5/8"	4
31	250-002	Bolt, 1/4 x 1 UNC	3
32	256-018	Washer, 1/4"	3
33	270-025	Lock nut, 1/4" UNC	3
34	300-012	Lynch Pin, 1/4"	1

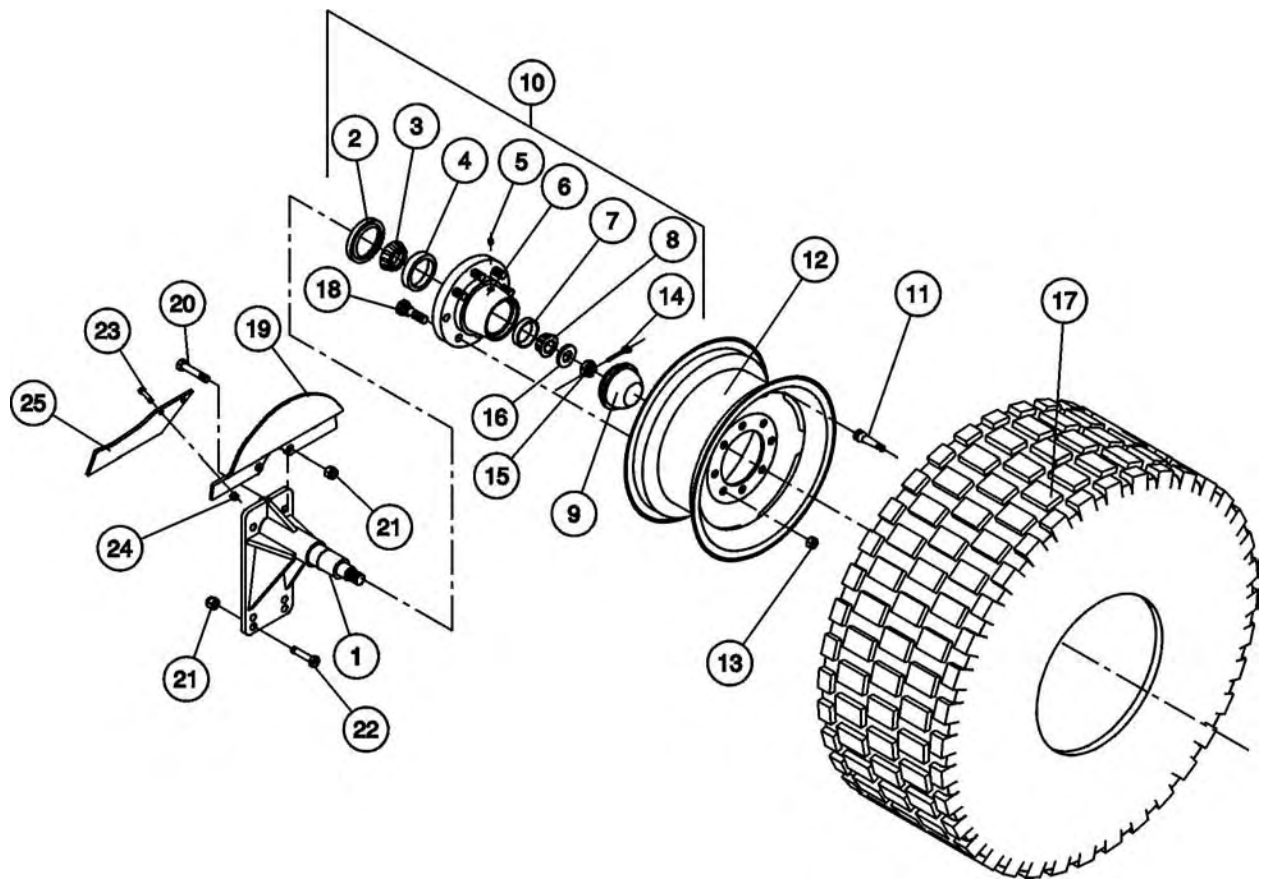
REEL AND GRATE



REEL AND GRATE

Ref.	Part No.	Description	Qty.
1	R100-155	Grate, 2" tooth spacing	1
	R100-175	Grate, 1-1/2" tooth spacing	1
2	R100-160	Reel	1
3	60-49	Batt, 7° tooth	3
4	230-005	Reel pin	6
5	579-034	Batt tooth	42
6	352-101	Flange bearing 2" bore, complete	2
6	356-100	Bearing insert 2" bore	2
7	270-004	Lock nut, 5/8 UNC	14
8	250-090	Bolt, 5/8 x 2 UNC	8
9	273-006	Grease nipple, self tapping	8
10	256-006	Flat washer, 5/8"	6
11	250-099	Bolt, 5/8 x 1 UNC	6
12	362-004	Tension bushing, 1-1/4 dia.	6
13	228-008	Ext. spring, 1/2 wire, 22 coils	6
14	258-003	Eyebolt, 5/8 UNC	6
15	255-005	Lock washer, 5/8"	6
16	255-009	Lock washer, 1/2"	1
17	590-600	Spacer	1
18	250-061	Bolt, 1/2 x 1-1/4, UNC	1
19	256-073	Machine bushing, 2 x 3 x 14 ga.	A/R
20	256-053	Machine bushing, 2 x 3 x 10 ga.	A/R
21	573-014	Weld on tooth, 2" tooth spacing	15
	570-023	Weld on tooth, 1-1/2" tooth spacing	15
22	R100-157	T-iron, complete, 2" tooth spacing	15
	R100-177	T-iron, complete, 1-1/2" tooth spacing	15
23	256-0531	Mach. bush., 2 x 2-1/2 x 10ga.	A/R
23	256-0532	Mach. bush., 2 x 2-1/2 x 14ga.	A/R

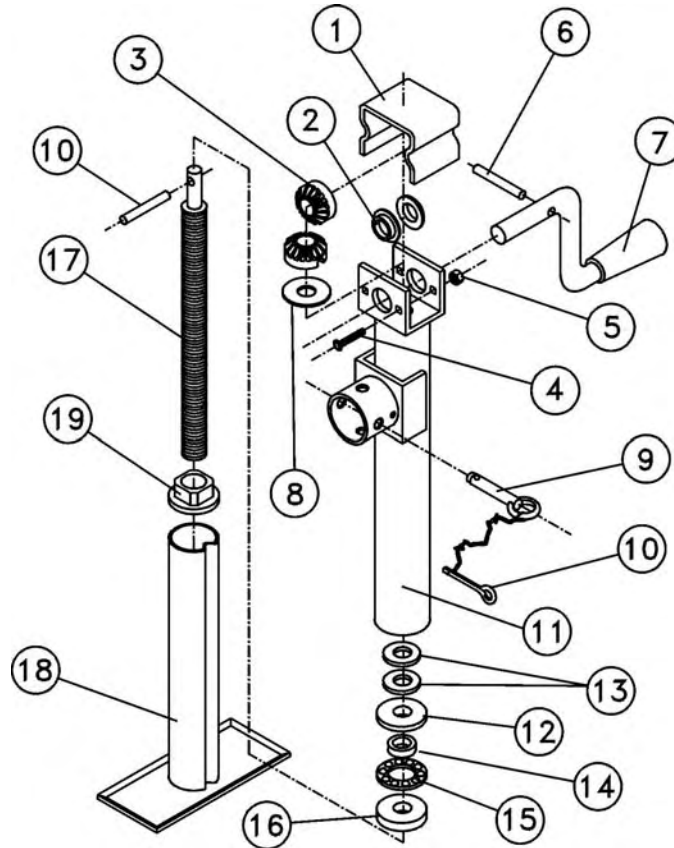
HUB AND AXLE ASSEMBLY



HUB AND AXLE ASSEMBLY

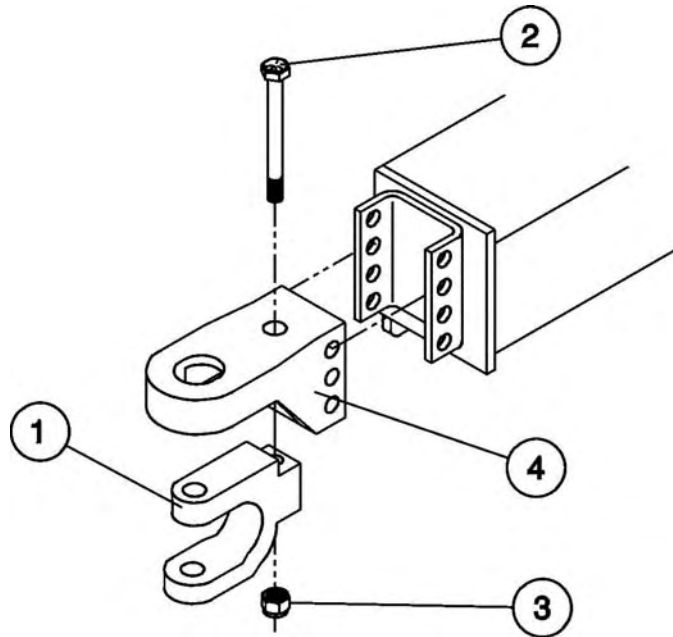
Ref.	Part No.	Description	Qty.
1	R100-140	Axle plate assembly	2
2	207-005	Seal	2
3	207-001	Bearing, inner	2
4	207-002	Race, inner	2
5	273-006	Grease zerk, self tapping	2
6	205-001	Hub c/w outer races	2
7	204-004	Race, outer	2
8	207-003	Bearing, outer	2
9	207-006	Dust cap	2
10	206-011	Hub, c/w items #2-9	2
11	211-002	Valve	2
12	201-006	Wheel, SW14C x 16.1, 8 bolt	2
13	207-060	Wheel nut	16
14	271-005	Cotter pin, 3/16 x 1-1/2	2
15	209-011	Castle nut, 1"-14 UNF	2
16	209-010	Washer	2
17	210-172	Tire, 16.5L x 16.1 SL, 6 ply	2
	210-002	Tire, 16.5L x 16.1, 10 ply	2
18	207-047	Wheel stud	16
19	590-1054	Wheel guard	2
20	250-088	Bolt, 5/8 x 2-1/2 UNC	4
21	270-004	Lock nut, 5/8" UNC	8
22	250-090	Bolt, 5/8 x 2 UNC	4
23	250-019	Bolt, 3/8 x 1-1/4 UNC	4
24	270-017	Lock nut, 3/8" UNC	4
25	590-1067	Wheel scraper	2
	90-15	Wheel guard kit, (both sides) incl. ref. 19, 23, 24, 25	1

HITCH JACK, SIDE WIND 10" CROWN (232-500)



Ref.	Part No.	Description	Qty.
1	232-651	Gear cover	1
2	232-652	Bushing	2
3	232-653	Gear	2
4	232-654	Bolt, 1/4 x 3 UNC	2
5	232-655	Nut, 1/4 UNC	2
6	232-656	Pin, long	1
7	232-657	Handle	1
8	232-658	Flat washer, 1/2 x 1 1/2	1
9	232-659	Lock pin & chain	1
10	232-660	Pin, long	1
11	232-661	Main body	1
12	232-662	Flat washer, 1/2 x 1 5/16 x 10ga	1
13	232-663	Flat washer, 1/2 x 1 1/16	2
14	232-664	Felt bushing	1
15	232-665	Bearing	1
16	232-666	Flat washer, 1/2 x 1 1/16 x 7ga	1
17	232-667	Acme screw	1
18	232-668	Stand body	1
19	232-669	Acme nut	1

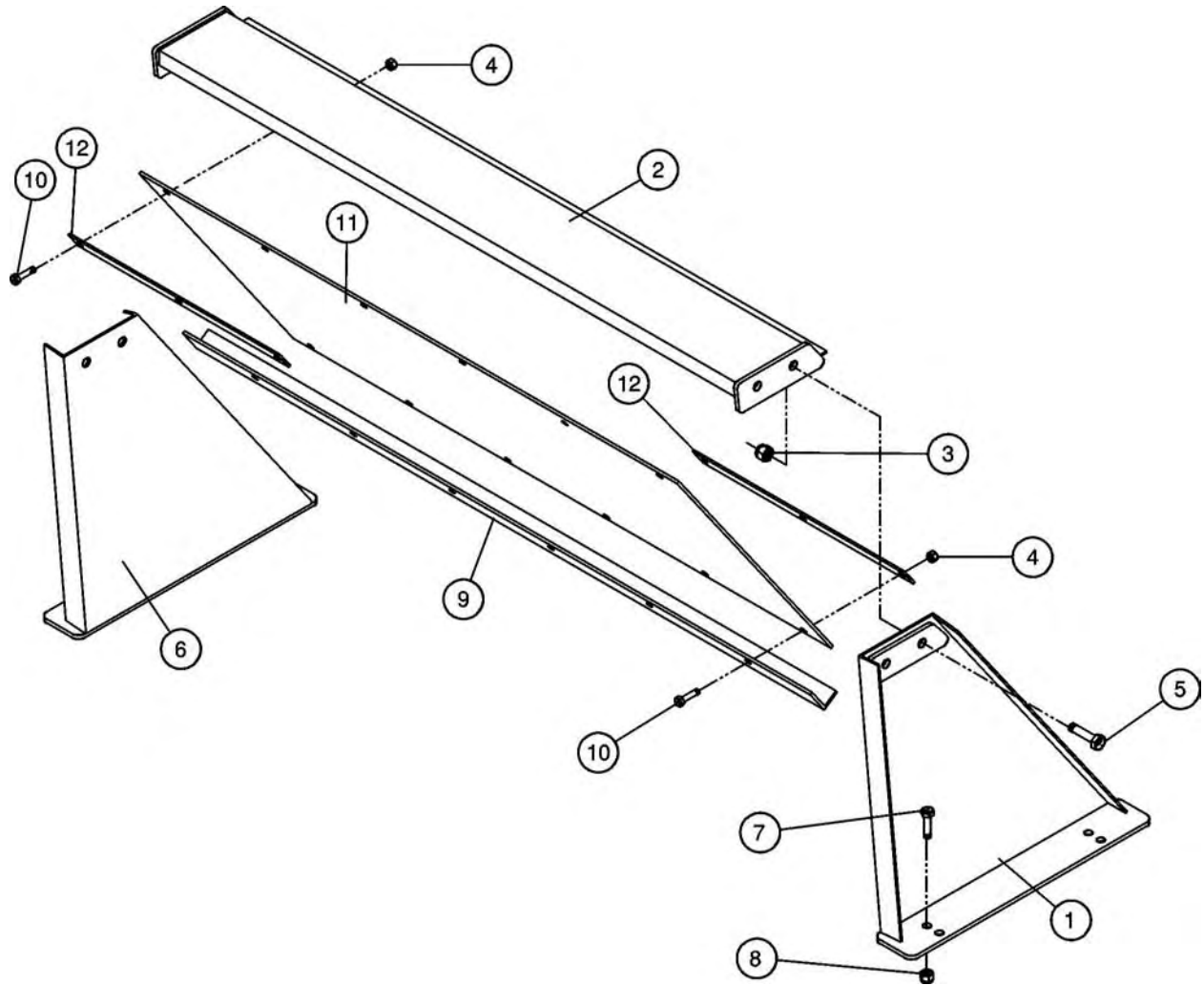
TOW CLEVIS



Ref.	Part No.	Description	Qty.
1	231-019	Double tow clevis	1
2	250-110	Bolt, 3/4 x 5 UNC	1
3	270-001	Lock nut, 3/4" UNC	1
4	231-020	Perfect hitch	1

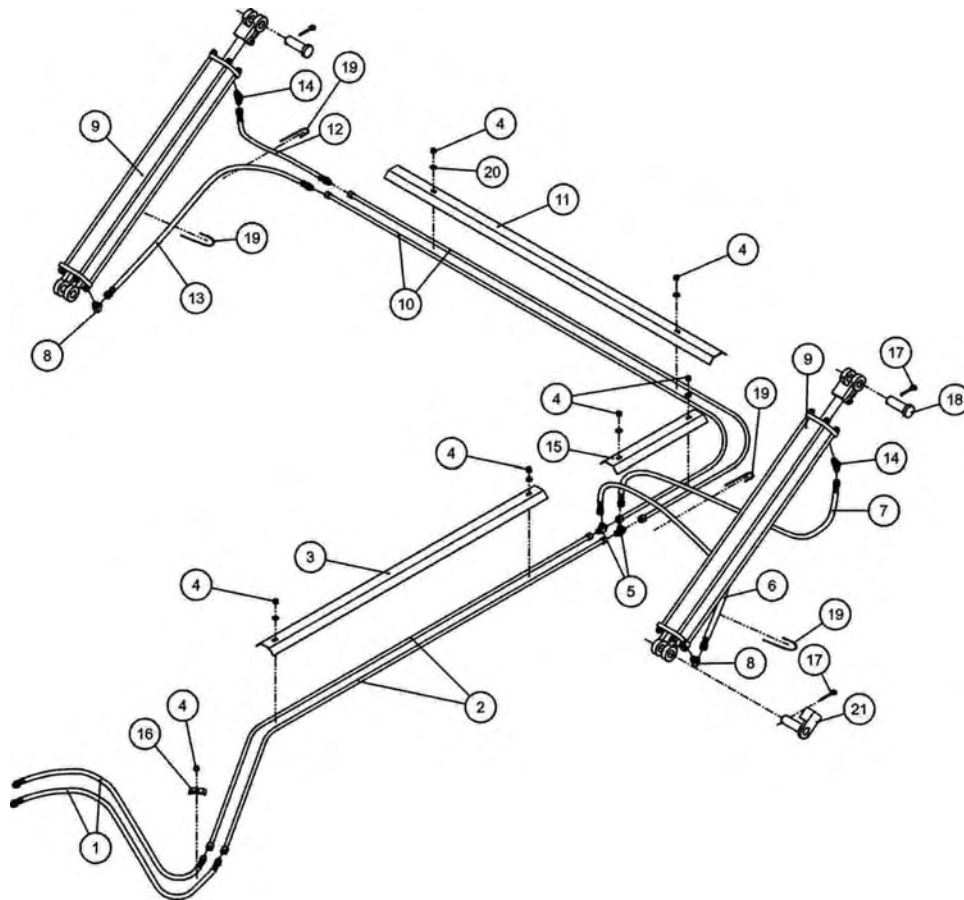
Note: Turn the base hitch over, as shown, when using the tow clevis.

ROCK DEFLECTOR KIT (73-00)



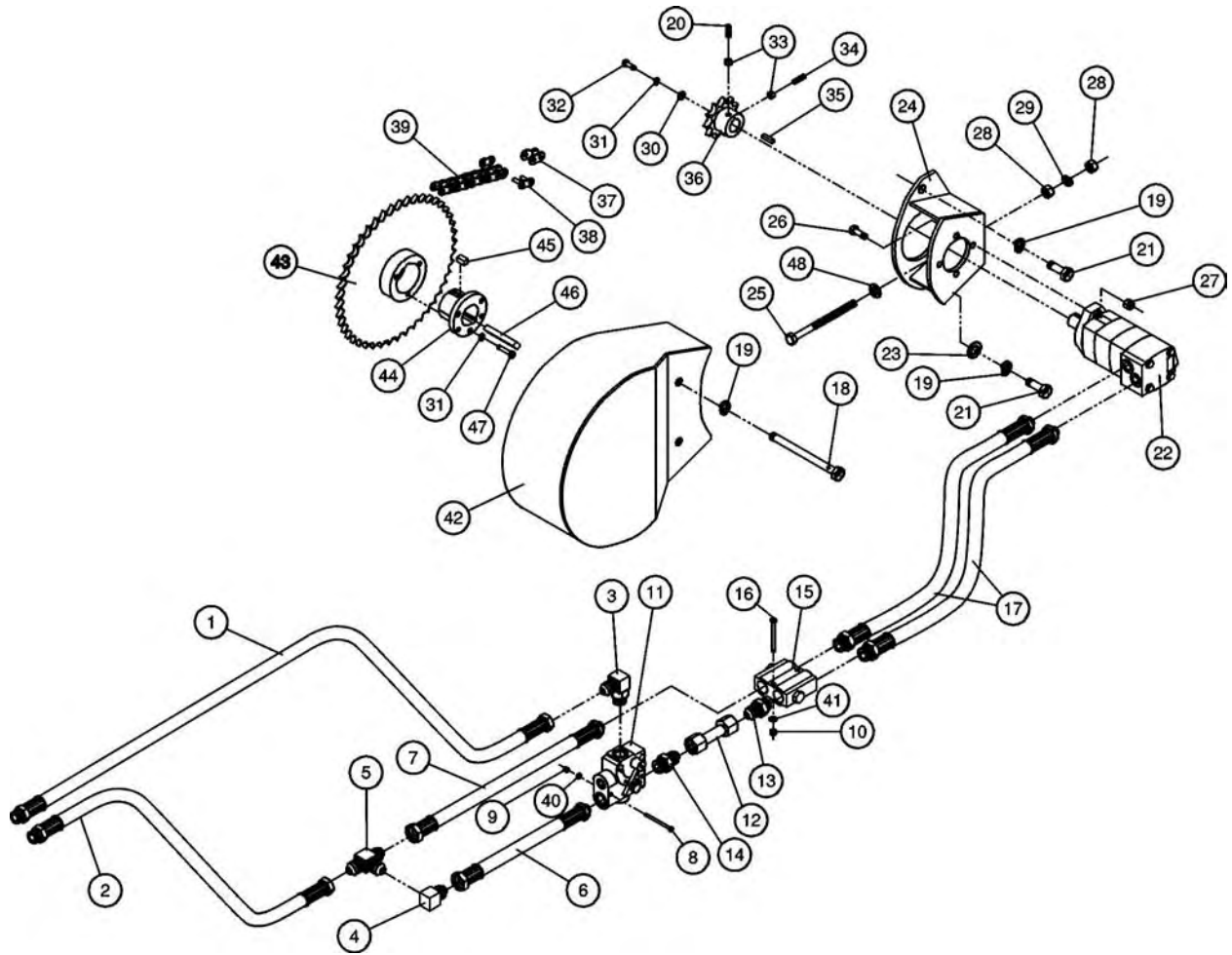
Ref.	Part No.	Description	Qty.
1	73-05	Upright, (left)	1
2	73-03	Flap Hanger	1
3	270-001	Lock nut, 3/4" UNC	4
4	250-007	Locknut,, 1/2" UNC	12
5	250-115	Bolt, 3/4 x 2 UNC	4
6	73-04	Upright, (right)	1
7	250-095	Bolt, 5/8 x 1-1/2 UNC	4
8	270-004	Lock nut, 5/8" UNC	4
9	590-447	Flap bottom angle iron	1
10	250-059	Bolt, 1/2 x 1-1/2 UNC	12
11	233-005	Rubber Flap, 60 x 30, PVC 350	1
12	520-145	Flap mounting clamp	4

HYDRAULIC CIRCUIT



Ref.	Part No.	Description	Qty.
1	111-126	Hose assembly 131", 3/8 SW	2
2	126-119	Tube assembly 70-1/2"	2
3	525-197	Tube shield 54"	1
4	270-017	Lock nut, 3/8 UNC	7
5	108-005	Male tee, 3/4-16 JIC 37°	2
6	111-228	Hose assembly 45", 3/8 SW	1
7	111-142	Hose assembly 33", 3/8 SW	1
8	108-043	Elbow, 90 deg. 3/4-16 ORB	2
9	100-3271	Cylinder, 3 x 36, Monarch, 1/2" ORB ports	2
10	126-120	Tube assembly 68"-90°-21"	2
11	525-195	Tube shield, 64"	1
12	111-151	Hose assembly 43", 3/8 SW	1
13	111-121	Hose assembly 68", 3/8 SW	1
14	108-044	Elbow, 3/4-16 ORB, 45°	2
15	525-196	Tube shield, 17-3/4"	1
16	C000-001	Hydraulic line clamp	1
17	271-005	Cotter pin, 3/16 x 1-1/2	4
18	302-015	Clevis pin, 1 x 2-7/8 U.L.	2
19	280-008	Plastic tie, 15" long	4
20	256-017	Washer, 3/8"	6
21	R100-168	Cylinder retainer pin	2

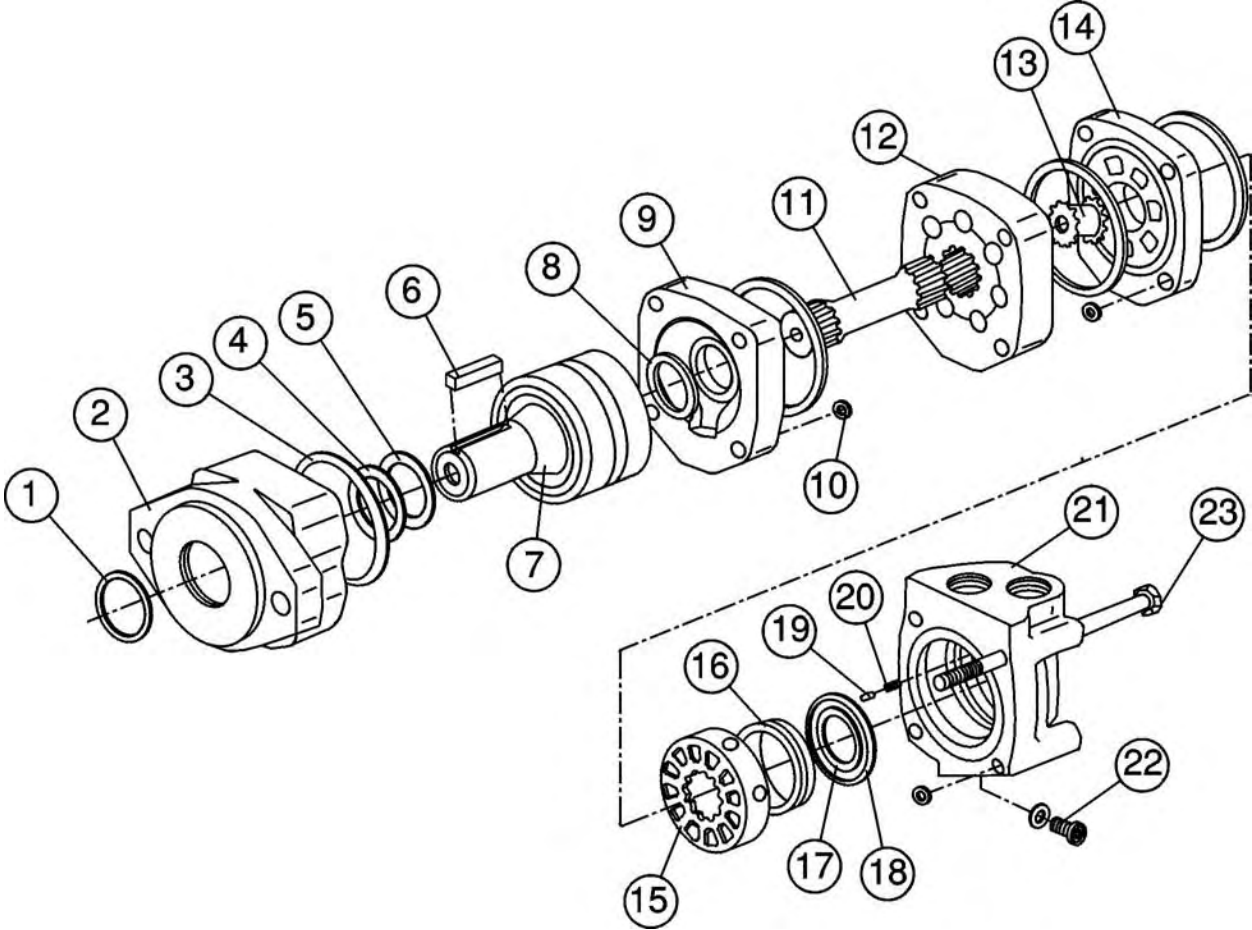
HYDRAULIC DRIVE ASSEMBLY



HYDRAULIC DRIVE ASSEMBLY

Ref.	Part No.	Description	Qty.
1	111-156	Hose assembly 105", JIC x NPT	1
2	111-242	Hose assembly 95", JIC x NPT	1
3	108-045	Elbow, 3/4-16 JIC x 7/8-14 ORB	1
4	108-031	Elbow, 3/4-16 JIC	1
5	108-005	Male Tee, 3/4-16 JIC	1
6	111-153	Hose assembly 13", ORB x JIC	1
7	111-154	Hose assembly 19", JIC x ORB	1
8	250-003	Bolt, 1/4 x 2-1/2 UNC	2
9	270-025	Lock nut, 1/4 UNC	2
10	270-020	Lock nut, 5/16 UNC	2
11	133-0010	Flow control valve, 7/8-14 ORB	1
12	126-116	Tube assembly	1
13	108-025	3/4-16 JIC x 3/4-16 ORB	1
14	108-046	3/4-16 JIC x 7/8-14 ORB	1
15	130-0020	Crossover relief valve, 3/4 ORB	1
16	250-011	Bolt, 5/16 x 2-1/2 UNC	2
17	111-246	Hose assy 39"	2
18	250-106	Bolt, 3/4 x 6-1/2 UNC	2
19	255-003	Lock washer, 3/4"	4
20	268-022	Set screw, 3/8 x 3/4 UNC, Sq hd	1
21	250-116	Bolt, 3/4 x 1-1/2 UNC	2
22	116-006	Hyd. motor 14.9 cu.in.-006 series	1
23	256-003	Flat washer, 3/4"	1
24	61-01	Hydraulic motor mount	1
25	61-03	Adjustment bolt	1
26	250-057	Bolt, 1/2 x 2 UNC	2
27	270-007	Lock nut, 1/2 UNC	2
28	257-019	Nut, 5/8 UNC	2
29	255-005	Lock washer, 5/8"	1
30	256-014	Flat washer, 3/8 x 1-1/2 10GA	1
31	255-013	Lock washer, 3/8"	4
32	250-018	Bolt, 3/8 x 1 UNC	1
33	257-032	Nut, 3/8 UNC	2
34	268-003	Set screw, 3/8 x 1 UNC, Sq hd	1
35	117-912	Key	1
36	312-825	Sprocket 80B11, 1-1/4 bore	1
37	311-802	Offset link, #80	2
38	311-801	Connector link, #80	1
39	310-805	Roller chain, #80 si. strand, 57"	1
40	256-018	Flat washer, 1/4"	1
41	256-020	Flat washer, 5/16"	1
42	61-02	Drive shield	1
43	312-834	Sprocket 80Q45 c/w hub	1
44	312-835	Hub, split taper, 2" bore	1
45	909-001	Key	1
46	902-010	Key	1
47	250-019	Bolt, 3/8 x 1-1/4 UNC	3
48	256-006	Flat washer, 5/8"	1

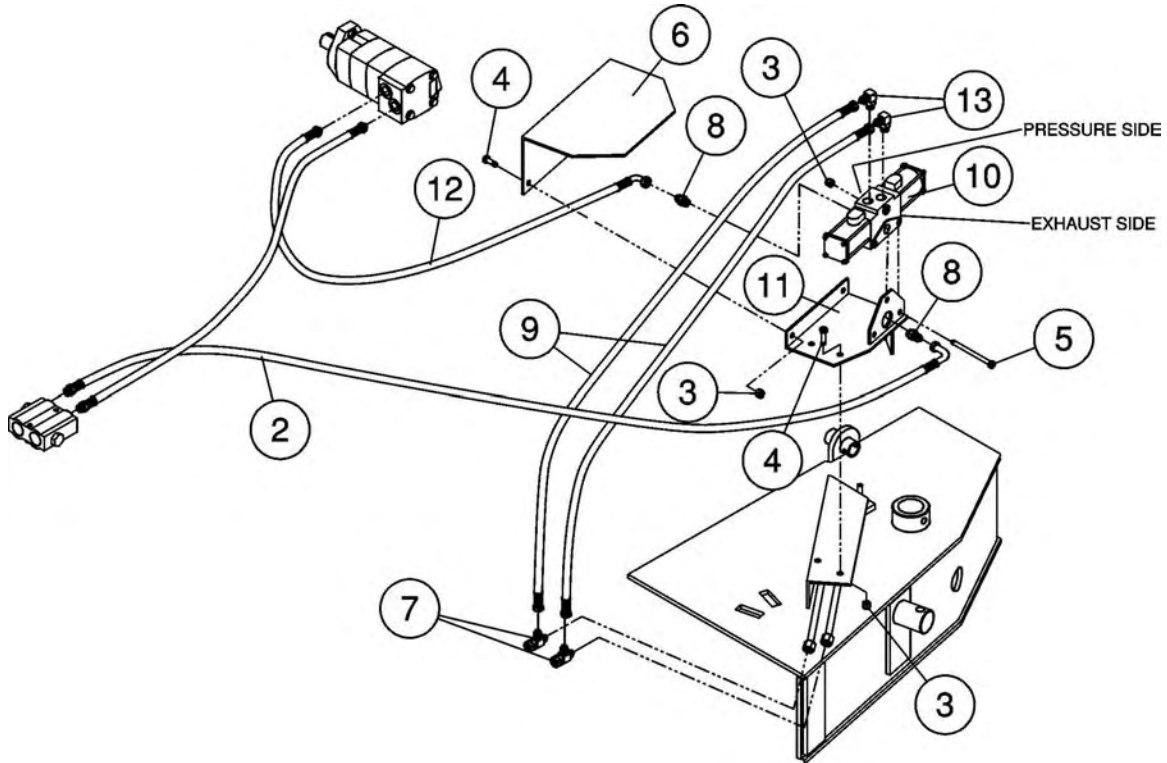
HYDRAULIC MOTOR, CHAR LYNN, 14.9 in³ (116-006)



HYDRAULIC MOTOR, CHAR LYNN, 14.9 in³ (116-006)

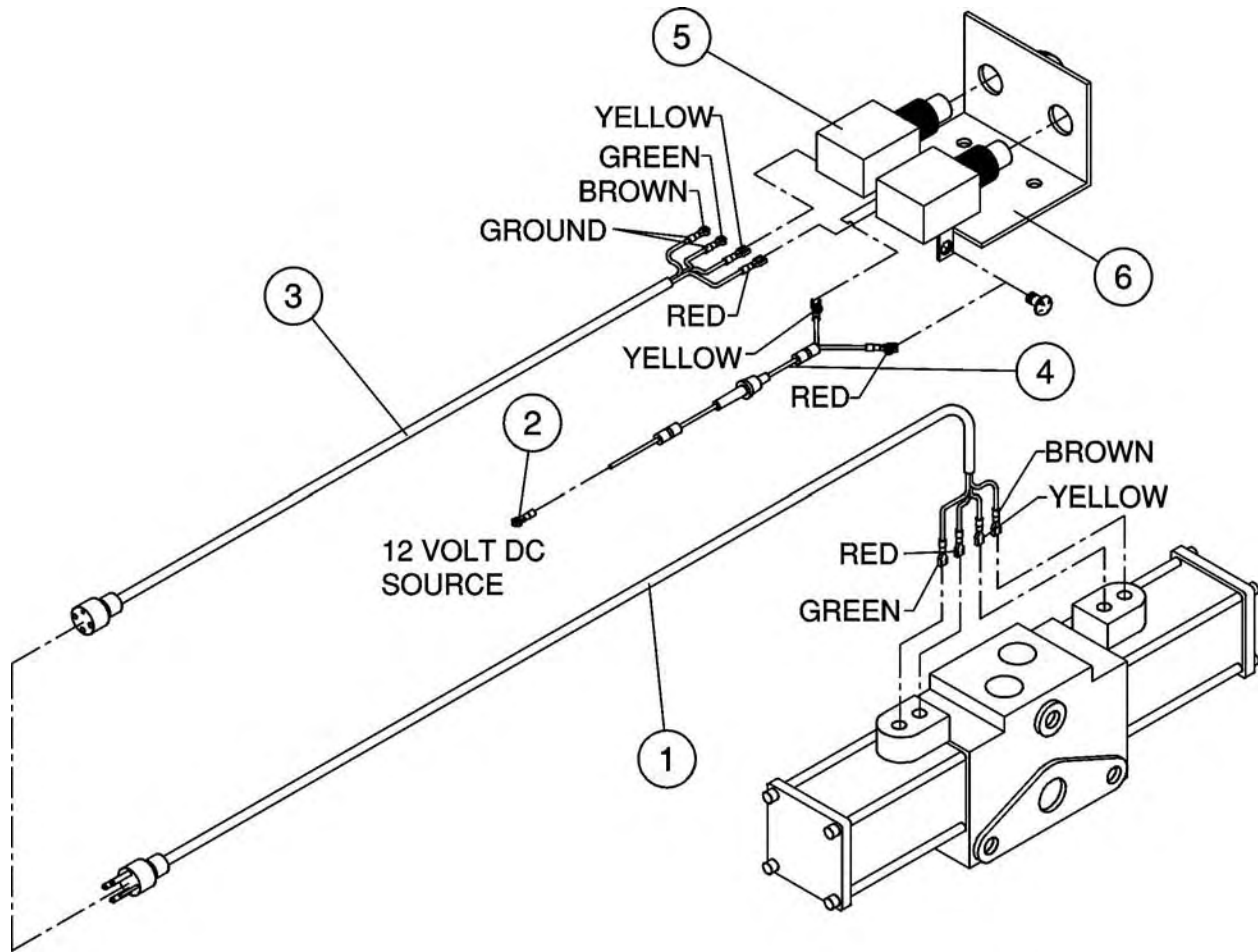
Ref.	Part No.	Description	Qty.
1		Seal, dust	1
2	117-960	Housing, bearing, 2 bolt	1
3		Seal, 3" ID	4
4		Ring, back-up	1
5		Seal, shaft	1
6	117-012	Key	1
7	117-961	Shaft & bearing kit	1
8		Seal, shaft face	1
9	117-962	Plate, wear	1
10		Seal, o-ring, 5/16" ID	3
11	117-963	Drive	1
12	117-964	Geroler, 1.758" width	1
13	117-918	Drive valve	1
14	117-965	Plate valve	1
15	117-966	Valve	1
16	117-967	Balance ring	1
17		Seal face, inner	1
18		Seal face, outer	1
19	117-925	Pin	1
20	117-930	Spring	1
21	117-969	Housing valve, 7/8-14 ports	1
22	117-932	Plug assembly, 7/16-20 UNF c/w o-ring	1
23	117-968	Bolt, 6.1" (14.9 in ³)	4
	117-970	Seal kit, includes # 1,3-5,8,17,18	1

MOTOR VALVE KIT, MAIN ASSEMBLY (R100-200)



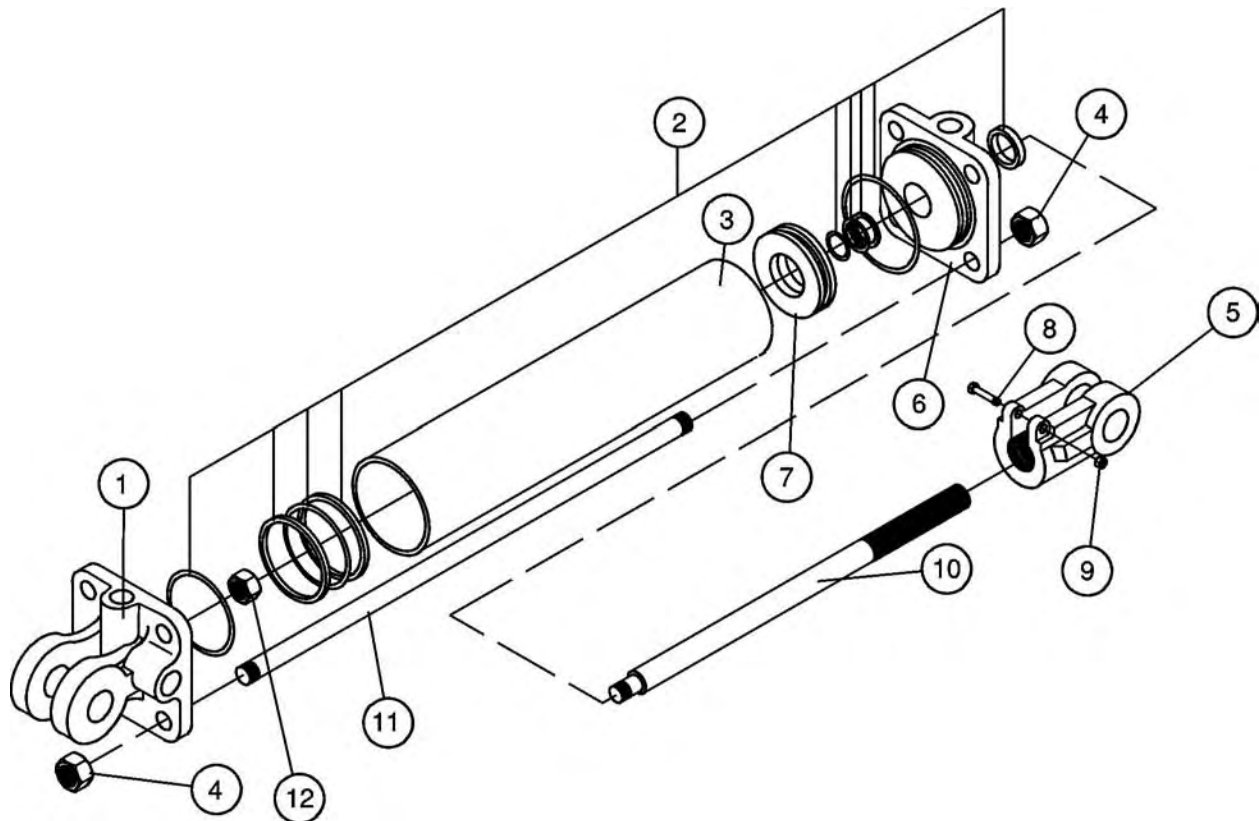
Ref.	Part No.	Description	Qty.
2	111-245	Hose assembly, 28", 1/2" DW	1
3	270-017	Lock nut, 3/8" UNC	7
4	250-018	Bolt, 3/8" x 1" UNC	4
5	250-028	Bolt, 3/8" x 3-1/2" UNC	3
6	520-447	Valve shield	1
7	108-030	Run tee, swivel, 3/4-16 JIC	2
8	108-025	Adapter, 3/4-16 ORBx 3/4-16 JIC	2
9	111-243	Hose assembly, 17", 3/8" SW	2
10	127-100	Solenoid operated valve 3/4-16 ORB, open crossover	1
11	431-01	Mounting plate	1
12	111-244	Hose assembly, 44", 1/2" DW	1
13	108-043	Elbow, 90 deg. 3/4-16 ORB	2

MOTOR VALVE KIT, ELECTRICAL ASSEMBLY



Ref.	Part No.	Description	Qty.
1	277-004	Wiring harness, solenoid, 12'	1
2	275-020	Terminal, 14-16 Ga., stud size 3/8"	1
3	277-003	Wiring harness, switch, 4'	1
4	277-007	Wiring harness, fused, split, batt. 4'	1
4	277-005	Replacement fuse, 5 AMP	1
5	275-002	Push switch	2
6	431-02	Mounting bracket, switch	1

HYDRAULIC CYLINDER, 3 x 36 TC MONARCH (100-3271)

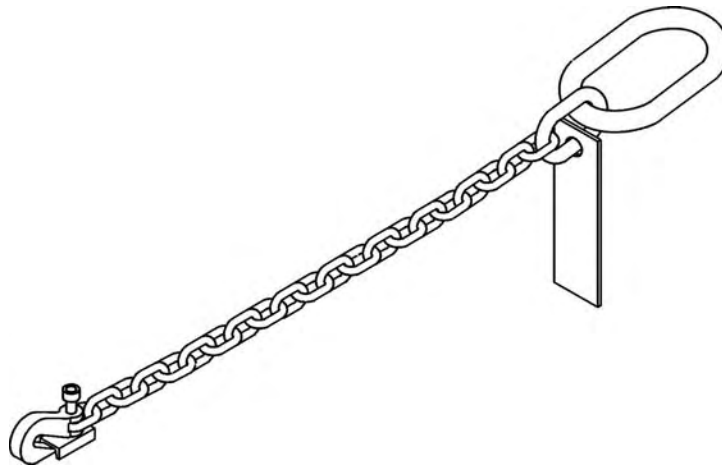


Ref.	Part No.	Description	Qty.
1	101-201	Clevis cap, TC	1
2	101-026	Seal kit	1
3	101-209	Cylinder tube, 3 x 36	1
4	257-022	Nut, 1/2" UNC	8
5	101-206	Rod clevis	1
6	101-207	Rod cap, TC	1
7	101-004	Piston	1
8	250-023	Clevis bolt, 3/8 x 1-3/4 UNC	1
9	257-032	Nut, 3/8" UNC	1
10	101-210	Rod 3 x 36	1
11	101-211	Tie rod, 3 x 36	4
12	101-023	Piston nut	1

TRANSPORT KITS

Safety Chain (S000-010)

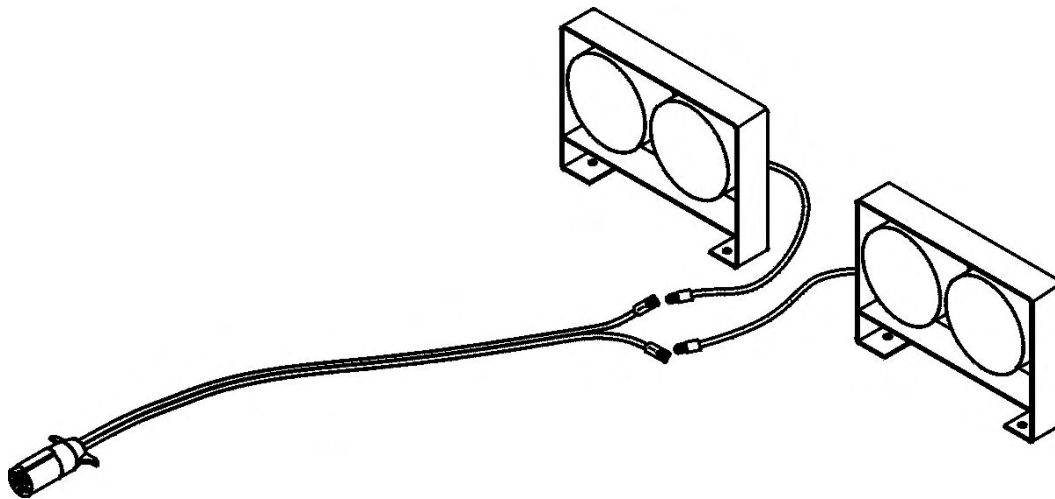
10,100 lbs. capacity, 59" min. length



NOTE: This safety chain is intended as an auxiliary attaching system per ASAE S338.3. The safety chain will help control the rock picker should it accidentally separate from the drawbar. **Do not use the safety chain for towing.** Replace the entire chain if any link or end fitting is broken, damaged or stretched.

Transport Light Kit (S000-035)

Includes a 7-pin ag plug, wishbone harness and left and right hand dual lights.



The lights are to be mounted with the red and amber facing to the rear, and the amber to the outside, or in a vertical installation, with the amber on top. The wiring harness is pre-wired with the 6' leg to attach to the left side light, and the 12' leg to attach to the right side light.

PARTS INDEX

Part Number	Page	Part Number	Page
100-3271	12, 19	207-006	8
101-023	19	207-047	8
101-026	19	207-060	8
101-201	19	209-010	8
101-206	19	209-011	8
101-207	19	210-002	8
101-210	19	210-172	8
108-005	12, 14	211-002	8
108-025	14, 17	228-008	6
108-030	17	228-012	4
108-031	14	230-005	6
108-043	12, 17	231-019	10
108-044	12	231-020	4, 10
108-045	14	232-500	9
108-046	14	232-651	9
111-121	12	232-653	9
111-126	12	232-654	9
111-142	12	232-655	9
111-151	12	232-656	9
111-153	14	232-657	9
111-154	14	232-661	9
111-156	14	232-662	9
111-228	12	232-664	9
111-242	14	232-665	9
111-243	17	232-666	9
111-244	17	232-667	9
111-245	17	232-668	9
111-246	14	232-669	9
116-006	14-16	233-005	11
117-012	16	250-002	4
117-912	14	250-003	14
117-918	16	250-007	11
117-925	16	250-011	14
117-930	16	250-018	14, 17
117-932	16	250-019	8, 14
117-960	16	250-023	19
117-961	16	250-028	17
117-963	16	250-049	4
117-966	16	250-057	14
117-967	16	250-059	11
117-968	16	250-061	6
117-970	16	250-088	8
126-116	14	250-090	4, 6, 8
126-119	12	250-095	11
126-120	12	250-099	6
127-100	17	250-106	14
130-0020	14	250-107	4
133-0010	14	250-110	10
201-006	8	250-114	4
204-004	8	250-115	11
205-001	8	250-116	14
206-011	8	255-003	14
207-001	8	255-005	4, 6, 14
207-002	8	255-009	6
207-003	8	255-013	14
207-005	8	256-003	14

256-006	4, 6, 14
256-014	14
256-017	12
256-018	4, 14
256-020	14
256-052	4
256-053	6
256-0531	6
256-0532	6
256-073	6
256-079	4
256-081	4
257-019	4, 14
257-022	19
257-032	14, 19
258-003	6
262-009	4
268-003	14
268-022	14
270-001	4, 10, 11
270-004	4, 6, 8, 11
270-007	4, 14
270-017	8, 12, 17
270-020	14
270-025	4, 14
271-005	8, 12
271-051	4
273-006	4, 6, 8
275-002	18
275-020	18
277-003	18
277-004	18
277-005	18
277-007	18
280-008	12
280-201	4
300-012	4
302-015	12
310-805	14
311-801	14
311-802	14
312-825	14
312-834	14
312-835	14
352-101	6
356-100	6
362-004	6
362-010	4
431-01	17
431-02	18
520-145	11
520-447	17
525-195	12
570-023	6
573-014	6
579-034	6
590-1054	8
590-1067	8
590-447	11
590-600	6
60-49	6

61-01	14
61-02	14
61-03	14
73-00	11
73-03	11
73-04	11
73-05	11
90-05	4
90-15	8
902-010	14
909-001	14
C000-001	12
C000-355	4
R100-101	4
R100-105	4
R100-110	4
R100-114	4
R100-116	4
R100-117	4
R100-120	4
R100-125	4
R100-127	4
R100-130	4
R100-140	8
R100-155	6
R100-157	6
R100-160	6
R100-168	12
R100-175	6
R100-200	17
S000-010	20
S000-035	20

SCHULTE®

NESSA

www.nessainc.com

73747 130TH ST

ZEARING IA 50276

☎ 641-487-7608

INFO@NESSAINC.COM

WWW.NESSAINC.COM