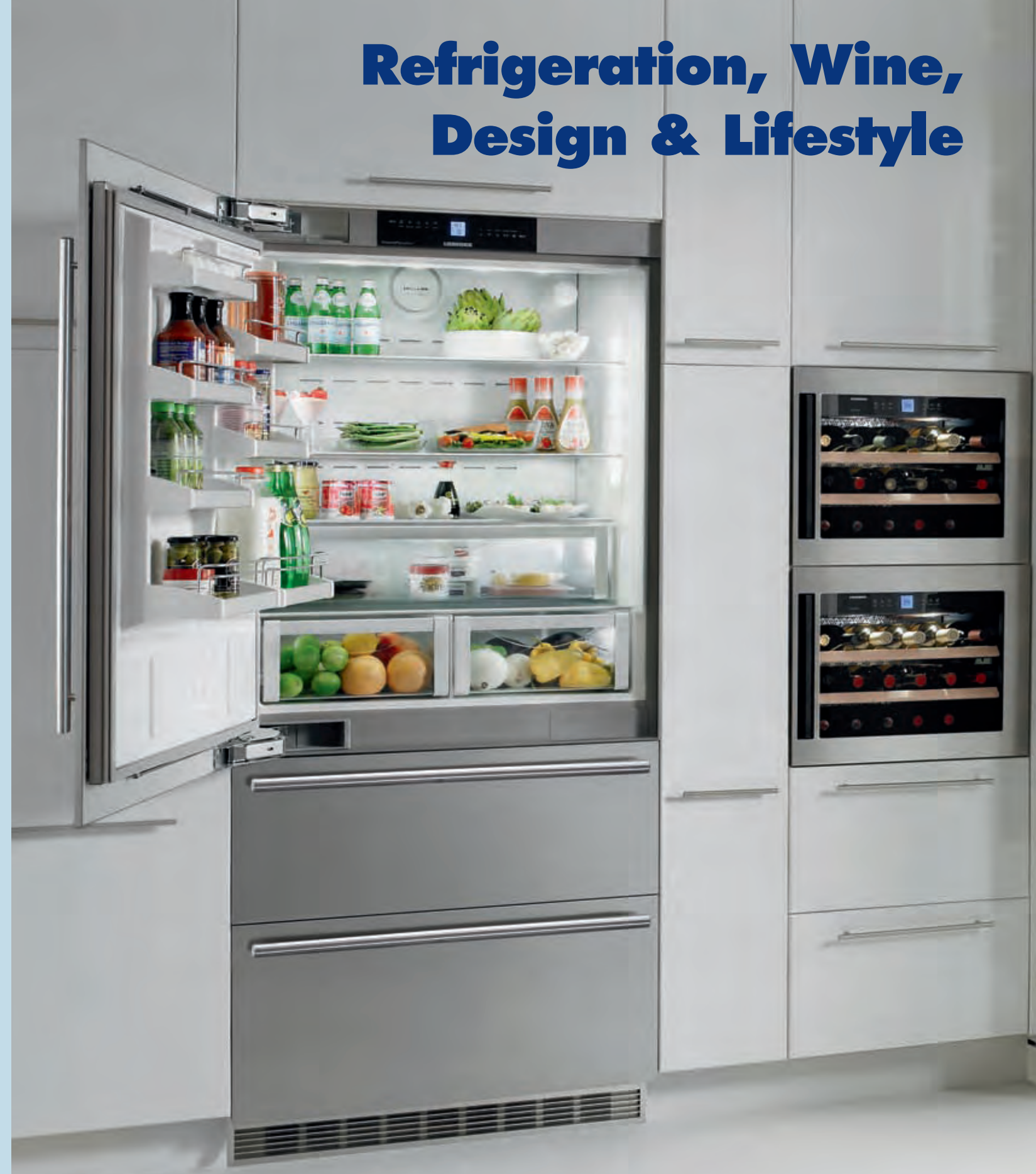


# Refrigeration, Wine, Design & Lifestyle



Using a smartphone device, access the Liebherr Mobile Product Catalog by scanning this QR Code to view Liebherr's entire product selection of refrigerators, freezers, wine cabinets and cigar humidors.

**Liebherr-Canada Ltd / Appliance Division**  
**E-mail: [appliances@liebherr.com](mailto:appliances@liebherr.com)**  
**[www.liebherr.us](http://www.liebherr.us) / [www.liebherr.ca](http://www.liebherr.ca)**  
**<http://m.refrigeration.liebherr.us>**

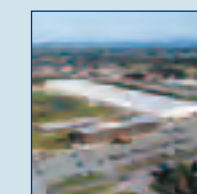
Subject to modification. Printed in Canada. 04/11.

# LIEBHERR

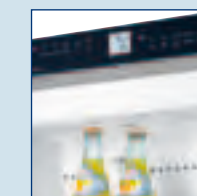
**Design, Quality and Innovation**



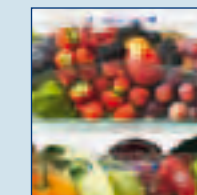
## Contents



**Liebherr Corporate Group 4**



**Innovations 6**



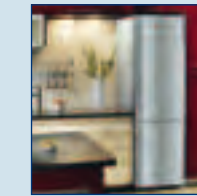
**BioFresh 8**



**Model overview 14**



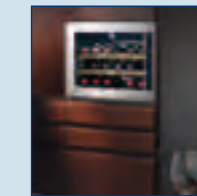
**Built-In Appliances 16**



**Freestanding Appliances 28**



**Fully Integrated Appliances 52**



**Wine & Undercounter 70**



**Design & Lifestyle 86**

# Global Success: Liebherr Corporate Group

Established in 1949 by Hans Liebherr with its beginnings in construction equipment, Liebherr is a family-owned company that is accomplished in numerous fields. The great success of its first mobile, easy-to-assemble and affordable tower crane was the foundation on which the company flourished. Today, Liebherr is not only one of the world's leading manufacturers of construction machinery, but it is also a recognized supplier of many technically innovative, user-oriented products and services. Over the years, the family business grew into what is today a group of companies, employing a workforce of more than 33,000 in more than 120 companies on all continents, including North America.



Liebherr in Newport News, USA



Liebherr is manufacturing mining dumpers and container cranes in the USA and Canada



Liebherr: advanced technologies are our business



Liebherr-Hausgeräte Ochsenhausen GmbH, Germany

Liebherr-Hausgeräte Lienz GmbH, Austria

Liebherr is the world's leader in premium refrigeration. Headquartered in Germany, Liebherr's engineering excellence provides the widest range of freezers, refrigerators and wine cabinets in Europe. Bringing this commitment to excellence and outstanding track record to the North American marketplace is a key initiative. Numerous innovative products and ideas, top quality, as well as advanced design make Liebherr a leading brand with more than 10,000 appliances leaving our various production plants every day.



# German Engineering and European Design Equals Top Quality

The name Liebherr symbolizes innovation, skill and drive. Recognized as a specialist in refrigeration and freezer technology worldwide, Liebherr consistently introduces new solutions for freshness. The combination of trendsetting materials and classic lines offer a distinct design that gives the products their unique identity. It becomes a tangible expression of the superior quality expected in a Liebherr appliance.

## More than 50 Years of Liebherr Innovations

**1954** Liebherr starts with the production of refrigerators. **1966** Introduction of the FrostSafe system with freezers. **1971** Liebherr introduced the first units with electronic control systems. **1989** The professional NoFrost technology used. **1993** Liebherr was the first manufacturer in the world to convert all its upright units to CFC free units. **1996** The Liebherr BioFresh technology is patented. **2003** First automatic IceMaker for use in CFC-free models. **2004** Innovative LED lighting system. **2006** Side-by-Side-appliance with 5 independent temperature zones. **2007** LED freezer lighting. **2008** Touch control system, SoftSystem for built-in and integrated appliances. **2009** Development of a Humidor for perfect storage of precious cigars. **2010** Enlargement of 36" platform for North America. **2011** Built-in models with ice and water through the door.

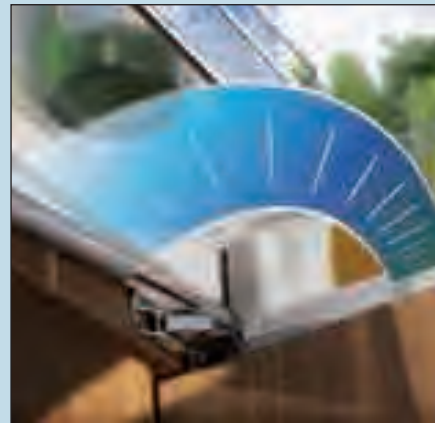
## Star-K standards



Liebherr's freestanding refrigeration products, as well as selected built-in and fully-integrated appliances are certified as Sabbath compliant by the Star-K organization. These units meet the strict religious requirements of the organization and are designed to meet all the needs of our kosher customers. For further information on the Star-K standards, please visit [www.star-k.org](http://www.star-k.org).

## Quality standards

Since the mid 1990's, Liebherr domestic appliances have been produced under the highest international quality standard – ISO 9001. Now, our production sites have achieved the certificate of compliance with the international environmental management standard – ISO 14001. Environmental responsibility and initiatives are an inherent part of Liebherr corporate culture.



## And because we think green...

ActiveGreen is a Liebherr corporate mission to achieve the highest ENERGY STAR® ratings, to set the example and encourage other North American manufacturers to be RoHS compliant as Liebherr did in mid-2007 and to have the least damaging effect on the environment through responsible manufacturing practices.



**Leading the Way with 100% ENERGY STAR® Ratings.** Liebherr is pleased

to announce that its entire product line of refrigeration meets and exceeds the new guidelines for ENERGY STAR®, making Liebherr the only brand in the North American marketplace to achieve these standards.

Products that earn the ENERGY STAR® use less energy and prevent greenhouse gas emissions by meeting strict energy efficiency guidelines.

With energy costs and global warming top-of-mind for consumers, Liebherr is committed to offering solutions that help consumers conserve energy and improve the quality of our environment.

**No More Harmful Substances.** The second key element of ActiveGreen is Liebherr's RoHS compliance. As of summer of 2007, all Liebherr appliances in North America met RoHS compliance making Liebherr the FIRST refrigeration manufacturer to comply with this practise worldwide. RoHS stands for the "Restriction of the use of certain hazardous substances in electrical and electronic equipment" and eliminates the use of major hazardous substances in the production of Liebherr products such as lead (Pb), mercury (Hg), cadmium (Cd) and certain types of chrome and biphenyl.

**Responsibility to our Planet.** Lastly, and importantly, Liebherr's list of responsible production initiatives is longstanding.

- Liebherr was the first appliance manufacturer worldwide to remove CFC's completely from the production process in 1993
- Since 2000, Liebherr's considerable investment to ensure environmental compatibility has resulted in the reduced use of chemicals, solvents and energy consumption
- Liebherr has established central waste and resource collection stations at their manufacturing facilities
- The packaging materials on all products are 100% recyclable
- The water used in the production process is purified and pollution-free

Liebherr is an industry leader in green manufacturing and we use ActiveGreen as a symbol for our responsible practises.



## Fresh European Design

**LED-light columns.** For Liebherr's Premium-Plus appliances, unique LED light columns are integrated into both sides of the compartment liner. Inside the columns are numerous LED-lights, ensuring a uniform illumination of the interior. The special satin finish of the light cover creates a pleasant lighting atmosphere. Thanks to their sleek, smooth contours, the two light columns allow the glass shelves to be rearranged and blend harmoniously with the interior. Liebherr is the first manufacturer to make energy efficient LED lighting standard in all new premium consumer models.

**GlassLine shelving.** The elegant GlassLine equipment is tough, scratch resistant and easy to clean. The glass storage shelves and door racks have a satin finish trim, enhancing

the streamlined and attractive appearance of the interior.

**SoftSystem.** Our new and unique patented SoftSystem ensures that the door closes gently – even when fully loaded and even when slammed shut.



## Experience Super Freshness with BioFresh

BioFresh guarantees the perfect climate for super-long-term freshness. With the temperature maintained just above +32 °F (0 °C) and an ideal humidity level, fruit and vegetables, meat and fish retain their healthy vitamins, delicate aroma and appetizing appearance up to three times longer than in a traditional refrigerator compartment. BioFresh technology gives you choice about how and how long to store your food. Here are some helpful suggestions for using BioFresh:

BioFresh drawers are individually usable as HydroSafes with high humidity or as DrySafes with low humidity to enable versatile storage. In this way the ideal climate is provided for all varieties of food.

**Meat and dairy products.** Low humidity and a temperature just above the freezing point are ideal for storing meat, fish and dairy products. BioFresh combined with the DrySafe setting provides just this climate and keeps it constant at all times.

**Fruit and vegetables.** Fruit and vegetables are best kept in the HydroSafe with high humidity. Precision electronics ensure that the temperature is maintained at exactly above +32 °F (0 °C), preventing damaging frostbite.

**Fish.** The ideal storage temperature for fish and seafood is at freezing point. At this temperature all the BioFresh drawers keep fish fresh for a long period.



# Lasting freshness with BioFresh

Nutritionists recommend one simple recipe for fitness and well-being: a healthy diet. Nature offers a whole range of vital substances: vitamins, minerals and carbohydrates to give us energy and stamina and, on top of that, a good mood. However, the right temperature and ideal humidity conditions are essential if food is to retain its healthy properties and delicate flavours as long as possible. Liebherr's BioFresh technology gives your quality of life a decisive boost by keeping your food fresher for much longer.

The information relates to storage in a BioFresh Drawer compared with a conventional fridge.



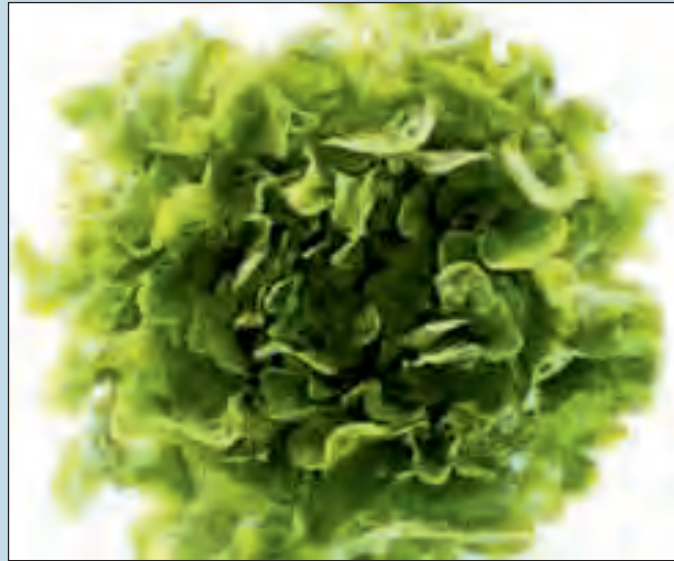
Cheese + 100 days



Carrots + 30 days



Asparagus + 8 days



Lettuce + 8 days



Grapes + 17 days



Salami + 100 days



Prawns + 1 day



Raspberries + 2 days



Artichokes + 7 days

# Experience exceptional freshness with BioFresh

In the BioFresh compartments food retains its healthy vitamins, aroma and appetising appearance up to three times longer than in a conventional fridge. Through its advanced technology the temperature is accurately kept at just above +32°F (0°C). Each drawer can be used individually and provides ideal humidity – HydroSafes with high humidity or DrySafes with low humidity – for a versatile storage solution.



## Fish

The ideal storage temperature for fish and seafood is at freezing point. The BioFresh Drawers enable fish to be kept fresher for longer at this temperature. For true fish enthusiasts, the new BioFresh-Plus technology provides greater flexibility and control for ideal food storage conditions. With its independent electronic control system the temperature in the top compartment can be adjusted to +28°F (-2°C) which is ideal for fish and seafood. Together with the DrySafe setting, this means that fish can be kept fresh for much longer.

## Tropical fruits

BioFresh-Plus allows even temperature-sensitive tropical fruits to be kept fresh for an exceptionally long period of time. They are stored in perfect conditions at +43°F (+6°C) and the high humidity in the upper, adjustable drawer means they retain their healthy vitamins, aroma and appetising appearance for up to three times longer than in a conventional fridge.



## Meat and dairy products

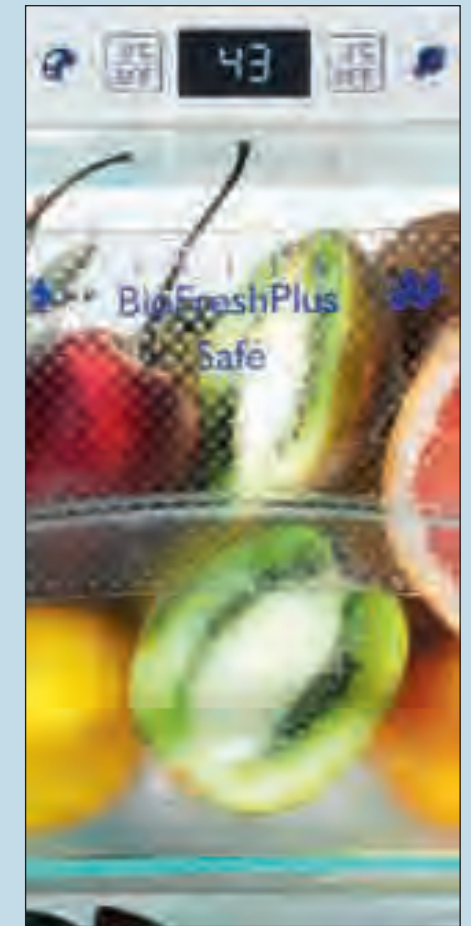
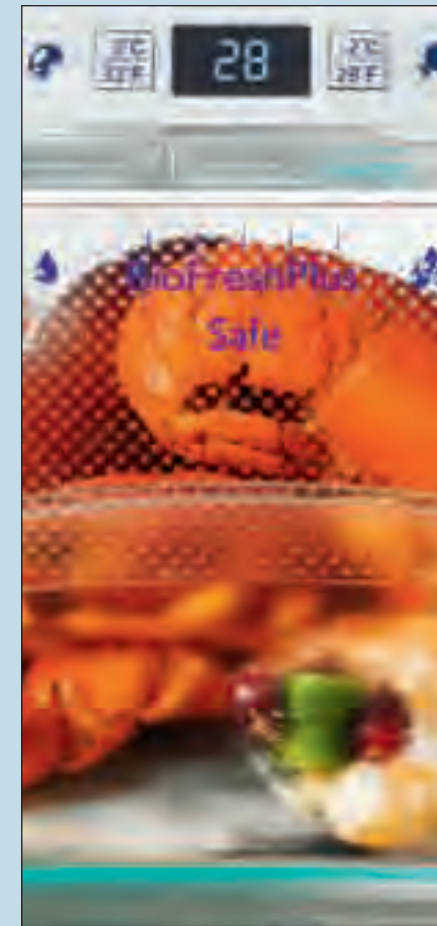
Low humidity and a temperature just above freezing point are the ideal storage conditions for meat and dairy products. BioFresh with the DrySafe setting provides just this type of climate and keeps it constant at all times.

## Fruit and vegetables

Fruit and vegetables are best kept in the HydroSafe with high humidity. A precision electronic control system ensures that the temperature is maintained at just above 0 °C, preventing damaging frostbite.

# BioFresh-Plus: For added flexibility

The BioFresh-Plus technology provides greater flexibility and control for ideal food storage conditions. With its independent electronic control system the temperature in the top compartment can be adjusted from +28°F (-2°C) (fish), to +43°F (+6°C) (exotic fruits). Stored at the right temperature and with the ideal humidity, food in the BioFresh-Plus compartments retains its healthy vitamins, aroma and appetising appearance up to three times longer than in a conventional fridge.



# European Quality and Design Meets North American Lifestyle

## Model overview

Your kitchen is the center of your home and the best place to express your individuality. Liebherr offers numerous options for customization, allowing you to best complement the design of your dream kitchen.



	Built-In Custom Finish	Built-In Stainless Steel	Freestanding	Fully Integrated	Wine & Undercounter	Design & Lifestyle
17"						WS 1200 XS 200
24"	BFI 1061	BF 1061	CS 1311	HC 1060	HWS 1800	
	RI 1410	R 1410	CS 1360	HC 1011	WU 5600	
	WFI 1061	WF 1061		HC 1050	WU 4000	
	RBI 1410	RB 1410		HC 1001	WS 4000	
	FI 1051	F 1051		HRB 1110 HF 851	RU 500 RO 500	
26"					WS 14300 WS 13500	
30"			CS 1400	HCB 1560		
			CS 1611	HCB 1561		
			CS 1640	HC 1540		
			CS 1660	HC 1541		
			CS 2060	HC 2060		
36"			CS 2061	HC 2061		
			CS 2062	HCB 2062		
			CBS 2062			
			SBS 26S1	SBS 20H1		
				SBS 20H0		
48"	SBS 24I1	SBS 241				
	SBS 24I3	SBS 243				
	SBS 24I4	SBS 244				
	SBS 24I6	SBS 246				
60"			SBS 32S1			

Model designation: 4th digit: "0" = Right Hinge 4th digit: "1" = Left Hinge 4th digit "2" = Frenchdoor

# Liebherr Warranty Plan

### Full Two-Year Warranty

For two years from the date of original purchase, your Liebherr Warranty covers all parts and labor to repair or replace any part of the product which proves to be defective in materials or workmanship.

### Full Five-Year Warranty

For five years from the date of original purchase, your Liebherr Warranty covers all parts and labor to repair or replace any components that prove to be defective in materials or workmanship in the sealed system. The "Sealed System" means only the compressor, condenser, evaporator, drier and all connecting tubing.

### Limited 6th through 12th-Year Warranty

From the 6th through 12th year from the date of original purchase, your Liebherr Warranty covers all parts that prove to be defective in materials or workmanship in the sealed system (parts only).

Please refer to the instruction manual for further details about the Liebherr Warranty Plan.

## Panel Options for Your Dream Kitchen

Within the built-in series, select from three designs in wood or stainless steel to achieve a seamless design. For a more professional style, the stainless steel door is the perfect match (no panels needed). Decor frames make it possible to put custom panels on the built-in appliances. To match your kitchen's design, use custom finished panels, overlay or framed.



Stainless steel



Custom finish-framed or overlay (as show above)



48"

## Built-In Appliances

What kitchen designer wouldn't be happy with the distinctive design options of the **SBS 241**. This unit can be presented in stainless steel (**SBS 241**) or have custom finish (**SBS 241i**), can appear as a side-by-side or in individual towers, and can create a showpiece, cabinet-depth wall of refrigeration.

High performance features for everyday use include Liebherr's patented BioFresh system, SoftSystem door closing technology, GlassLine easy-to-clean interior shelving, and space-saving beverage racking. LED lighting appears in both the full refrigeration tower and in the BioFresh drawers in the other tower.

### SBS 241 Premium BioFresh NoFrost



#### Capacity

Refrigerator comp. cu.ft. (l)	13.8 (391)
BioFresh comp. cu.ft. (l)	5.5 (157)
NoFrost Freezer comp. cu.ft. (l)	4.5 (127)

#### Outside dimensions

in inches H/W/D	max. 77"/48"/24-7/8"
in cm H/W/D	195.5/121.9/63.2

#### Features

3 separately adjustable temperature zones

left appliance:		BF 1061
right appliance:		R 1410

Solo appliances are ENERGY STAR® rated

**This unit is also available as**

**SBS 241i:** custom finish





The **SBS 2413** and its stainless front counterpart, the **SBS 243** are packed with features and limitless design options. Enjoy the large capacity and the convenience of the full freezer tower outfitted with transparent drawers, and the full refrigeration tower with LED lighting, touch control system and newly designed BioFresh drawers. The two towers can take their places side-by-side or in different parts of the kitchen.

This unit not only gives you maximum space for frozen and fresh food, but it actually preserves your produce and meats up to three times longer with Liebherr's patented BioFresh technology. The exterior of the doors can be finished to match any cabinet surface that you can imagine – so go ahead and make your refrigeration blend into your decor with exotic woods, high gloss veneers or make a statement in stainless steel.

**SBS 2413** Premium BioFresh NoFrost



Capacity	
Refrigerator comp. cu.ft. (l)	8.7 (246)
BioFresh comp. cu.ft. (l)	4.1 (117)
NoFrost Freezer comp. cu.ft. (l)	9.4 (267)
Outside dimensions	
in inches H/W/D	max. 77"/48"/25-5/16"
in cm H/W/D	195.5/121.9/64.3

Features	
3 separately adjustable temperature zones	
left appliance:	FI 1051
right appliance:	RBI 1410
Solo appliances are ENERGY STAR® rated	

**This unit is also available as**  
**SBS 243:** with stainless steel doors



Keep your food and life simple and organized with built-in 48" Side-by-Side Refrigerator and Freezer towers. Staring an IceCenter for cubes, crushed ice and chilled water through the freezer door which dispenses using the contact-sensitive LED lit paddles. Plus, robust removable transparent drawers with an easy to clean interior offer practical storage solutions. On the refrigeration side, the new BioFresh-Plus technology provides more flexibility for customized storage with adjustable temperature for upper drawer ranging from 32°F (0°C), 28°F(-2°C) fish or 43°F (+6°C) tropical fruit via a separate electronic control system. The flush LED lighting illuminates the interior allowing a clear view of items stored.

**SBS 244 PremiumPlus BioFreshPlus NoFrost**



Capacity	
Refrigerator comp. cu.ft. (l)	8.7 (246)
BioFresh comp. cu.ft. (l)	3.9 (111)
NoFrost Freezer comp. cu.ft. (l)	9.7 (270)

Outside dimensions	
in inches H/W/D	max. 77"/48"/25-5/16"
in cm H/W/D	195.5/121.9/64.3

Features	
4 separately adjustable temperature zones	
left appliance:	F 1061
right appliance:	RB 1420
Solo appliances are ENERGY STAR® rated	

**This unit is also available as**  
**SBS 2414:** custom finish  
 Available late 2011

48"

## Built-In Appliances

Liebherr's **SBS 246** offers unlimited flexibility and an array of storage possibilities for almost every kind of food. Five distinct temperature zones (main compartment, BioFresh drawers, freezer and two temperature zones in the wine compartment) make for completely customized storage conditions.

Other key features include: cabinet depth dimensions, Liebherr's SoftSystem for gently closing doors, flexible bottle storage in the main compartment, and LED lighting on both sides. The wine compartment houses 34 bottles, uses wooden shelving on telescopic rails, and offers a unique drop-down presentation shelf.



### SBS 246 PremiumPlus Vinidor BioFresh NoFrost



#### Capacity

Refrigerator comp. cu.ft. (l)	8.7 (246)
BioFresh comp. cu.ft. (l)	4.1 (117)
Wine Storage cap.	34 Bordeaux bottles
NoFrost Freezer comp. cu.ft. (l)	4.5 (127)

#### Outside dimensions

in inches H/W/D	max. 77"/48"/24-7/8"
in cm H/W/D	195.5/121.9/63.2

#### Features

5 separately adjustable temperature zones	
left appliance:	WF 1061
right appliance:	RB 1410
RB 1410 is ENERGY STAR® rated	

**This unit is also available as**

**SBS 2416:** custom finish

# The Built-in Advantage



**Digital Temperature Control.** Thanks to precise electronic controls and clearly arranged function keys, the units are simple and easy to operate. The elegant and exact MagicEye control keeps the temperature at the level you select. The SuperCool function reduces the temperature of the refrigerator to +36 °F (+2 °C) for 6 hours. This is ideal for chilling fresh food quickly. In the freezer, the automatic SuperFrost function ensures that the vitamins in food are optimally preserved when frozen. It quickly reduces the temperature in your freezer to as low as -26 °F (-32 °C) so you can freeze fresh food quickly and carefully.



**Drawers on telescopic rails.** Vitamin-rich foods can be conveniently stored in spacious fruit and vegetable, or even BioFresh drawers. The transparent sliding drawers pull out on smooth telescopic rails.



**Automatic IceMaker.** Liebherr's IceMaker, which is permanently plumbed in, provides you with just the right supply of perfect ice cubes for every occasion. The two drawers will hold all the ice you'll need. The IceMaker automatically keeps your supplies topped up.



**Beverage Rack.** The Beverage Rack is especially practical, providing maximized space for cans and bottles without taking up valuable shelf space.



**Duo Cooling System.** Ice-cold air circulates around the frozen foods, freezing it quickly and in a manner that seals in vitamins. Air moisture is discharged from the freezing area. Ice does not form in the appliance and defrosting is unnecessary. The cooling unit generates its own cold air with a separate device. No air is exchanged between the refrigerator and freezer sections. This keeps odors from becoming mixed, and foods stored in the refrigerator section are kept from drying out.

**Gallon Holder.** The elegant GlassLine fittings of Liebherr units also provide door storage shelves with a Gallon Holder. The depth of these shelves is designed to hold gallon containers so that you can keep a large supply of milk or juice on hand.



The **SoftSystem** feature provides added safety and convenience. Integrated in the door, the SoftSystem cushions movement when the door is closed. This SoftSystem ensures that the door closes gently even when fully loaded. The door closes automatically from an opening angle of approximately 45 °.



**Water filter.** In our built-in appliances, the integrated water filter for the IceMaker is conveniently located behind the magnetic toe kick, allowing for quick filter changes when indicated by the electronic control panel. This activated carbon filter ensures pure water to produce fresh cubes.



Built-In Appliances	WF 1061 PremiumPlus Vinidor NoFrost	RB 1410 Premium BioFresh	BF 1061 Premium BioFresh NoFrost	R 1410 Premium	SBS 246 PremiumPlus Vinidor BioFresh NoFrost	SBS 2414 PremiumPlus BioFreshPlus NoFrost	SBS 2413 Premium BioFresh NoFrost	SBS 241 Premium BioFresh NoFrost
Built-In Stainless Steel	•	•	•	•	•	–	–	•
Built-In Custom Finish	–	–	–	–	–	•	•	–
Freestanding Stainless Steel	–	–	–	–	–	–	–	–
ENERGY STAR®	–	•	•	•	– / •	•	• / •	• / •
Energy consumption in 365 days kWh	n.a.	297	384	284	–	769	747	668
<b>Appliance features</b>								
Total capacity cu.ft. (l)	9 (254)	12.8 (363)	10 (284)	13.8 (391)	21.8 (617)	22.3 (627)	22.2 (630)	23.8 (675)
Capacity refrigerator / BioFresh comp. cu.ft. (l)	–	8.7 (246) / 4.1 (117)	– / 5.5 (157)	13.8 (391) / –	8.7 (246) / 4.1 (117)	8.7 (246) / 3.9 (111)	8.7 (246) / 4.1 (117)	13.8 (391) / 5.5 (157)
Capacity of wine compartment cu.ft. (l)	4.5 (127)	–	–	–	4.5 (127)	–	–	–
max. No. of Bordeaux btls 0.75 Ltr.	34 Bordeaux bottles	–	–	–	34 Bordeaux bottles	–	–	–
Capacity of freezer compartment cu.ft. (l)	4.5 (127)	–	4.5 (127)	–	4.5 (127)	9.7 (270)	9.4 (267)	4.5 (127)
Shipping weight lbs. (kg)	254.8 (115.8)	221.8 (100.8)	232.8 (105.8)	218.5 (99.3)	433.2 (216.6)	472.1 (214.6)	413.4 (206.7)	451.2 (205.1)
Climate rating 1)	SN-T	SN-T	SN-T	SN-T	SN-T	SN-T	SN-T	SN-T
Automatic refrigerator defrosting	•	•	•	•	•	•	•	•
Automatic freezer defrosting	•	–	•	–	•	•	•	•
Automatic IceMaker	•	–	•	–	•	•	•	•
Autom. IceMaker can be switched off	•	–	•	–	•	•	•	•
Ice cube output lbs. (kg)/24h	2.2 (1)	–	2.2 (1)	–	2.2 (1)	2.2 (1)	2.2 (1)	2.2 (1)
Ice cube stock lbs. (kg)	3.3 (1.5)	–	3.3 (1.5)	–	3.3 (1.5)	3.3 (1.5)	3.3 (1.5)	3.3 (1.5)
Door hinges 2)	left (r)	right (r)	left (r)	right (r)	left / right	left / right	left / right	left / right
<b>Dimensions in. (cm)</b>								
Overall height in. (cm) 3)	max. 77" (195.5)	max. 77" (195.5)	max. 77" (195.5)	max. 77" (195.5)	max. 77" (195.5)	max. 77" (195.5)	max. 77" (195.5)	max. 77" (195.5)
Overall width in. (cm)	24" (61)	24" (61)	24" (61)	24" (61)	48" (121.9)	48" (121.9)	48" (121.9)	48" (121.9)
Overall depth in. (cm)	24-7/8" (63.2)	24-7/8" (63.2)	24-7/8" (63.2)	24-7/8" (63.2)	24-7/8" (63.2)	25-5/16" (64.3)	25-5/16" (64.3)	24-7/8" (63.2)
Cutout height in. (cm) 4)	80" (203.2)	80" (203.2)	80" (203.2)	80" (203.2)	80" (203.2)	80" (203.2)	80" (203.2)	80" (203.2)
Cutout width in. (cm)	24" (61)	24" (61)	24" (61)	24" (61)	48" (121.9)	48" (121.9)	48" (121.9)	48" (121.9)
Cutout depth in. (cm)	24" (61)	24" (61)	24" (61)	24" (61)	24" (61)	24" (61)	24" (61)	24" (61)
<b>Energy supply</b>								
Voltage V/Hz	115 / 60	115 / 60	115 / 60	115 / 60	115 / 60	115 / 60	115 / 60	115 / 60
<b>Also available as</b>	<b>WFI 1061:</b> custom finish	<b>RBI 1410:</b> custom finish	<b>BFI 1061:</b> custom finish	<b>RI 1410:</b> custom finish	<b>SBS 2416:</b> custom finish	<b>SBS 244:</b> stainless steel door	<b>SBS 243:</b> stainless steel doors	<b>SBS 2411:</b> custom finish

1) Climate rating SN = suitable for ambient temperatures of +50 °F to +90 °F (+10 °C to +32 °C)  
 Climate rating ST = suitable for ambient temperatures of +61 °F to +100 °F (+16 °C to +38 °C)  
 Climate rating T = suitable for ambient temperatures of +61 °F to +109 °F (+16 °C to +43 °C)

2) Door hinges: r = reversible  
 3) Overall height of unit can be adjusted by 5/8" (16 mm)  
 4) Optional accessories for 84" high cabinets are available only for 48" SBS models



# Freestanding Appliances

The slim styling and urban panache of the **CS 1360** make it a clear choice for small spaces, galley kitchens, condos and apartments. The most energy efficient in its class, this sleek 24" unit has unique features such as a LED light column in the refrigerator that does double duty as a shelf support and a flexible VarioBox on the door that can move right to the kitchen table.

Small can be spacious. Smart interior design choices like the beverage rack, foldable glass shelf, and gallon holders for large containers maximize the space. And on the exterior, Liebherr's new SmartSteel material is scratch resistant and makes fingerprints virtually disappear.

The appliance can be built into the range of kitchen cabinets provided the ventilation requirements are followed. Liebherr offers an exterior water filter as an accessory for **CS 1360** that can be placed in cabinetry above or beside the unit.



### CS 1360 Premium NoFrost



#### Capacity

Refrigerator comp. cu.ft. (l)	9.7 (275)
NoFrost Freezer comp. cu.ft. (l)	3.3 (94)

#### Outside dimensions

in inches H/W/D	79-3/16"/23-5/8"/24-13/16"
in cm H/W/D	201.1/60/63

#### Features

2 separately adjustable cooling circuits for refrigerator and freezer compartments.

#### This unit is also available as

**CS 1311:** door hinges left, without IceMaker



Show off the beautiful exterior of the freestanding CS 1400 with ergonomic handles, beveled corners and the easy-to-clean SmartSteel finish that is scratch resistant and makes fingerprints virtually disappear. Plus, enjoy convenient features such as a foldable glass shelf and a flexible VarioBox on the door that can move right to the kitchen table. If a custom look is what you are trying to achieve, simply semi-build-in this compact, cabinet depth model.

**CS 1400** Premium NoFrost



**Capacity**

Refrigerator comp. cu.ft. (l)	11 (312)
NoFrost Freezer comp. cu.ft. (l)	3 (84)

**Outside dimensions**

in inches H/W/D	73-1/4"/29-17/32"/24-13/16"
in cm H/W/D	186/75/63

**Features**

2 separately adjustable cooling circuits for refrigerator and freezer compartments.



Featuring many premium features, the **CS 1640** offers Liebherr's signature stainless steel with a SmartSteel finish front and European styling. As a value alternative, the unit is cabinet depth and can fit easily into an existing space, for the look of a built-in without building in. To make installation even easier and providing the option to place the unit anywhere in the kitchen, there's no need for water connection for the IceMaker. A well-designed internal water tank provides water for perfect cubes.



**CS 1640** Premium NoFrost



Capacity	
Refrigerator comp. cu.ft. (l)	11 (312)
NoFrost Freezer comp. cu.ft. (l)	4.2 (119)
Outside dimensions	
in inches H/W/D	79-17/32"/29-17/32"/24-13/16"
in cm H/W/D	202/75/63

Features	
2 separately adjustable cooling circuits for refrigerator and freezer compartments.	



When the kitchen space calls for 30", the **CS1660** answers. Energy efficient LED lighting takes a starring role by illuminating the main compartment, and a unique integrated LED light sits in the bottom of the refrigerator door to shine down into freezer drawers when opened. A convenient, internal water filter is well placed for quick changes to ensure the supply to the IceMaker is always perfect. Features such as a foldable glass shelf, removable VarioBox, and bottle shelving make the interior as appealing as the beautiful exterior with ergonomic handles, beveled corners and the easy-to-clean SmartSteel finish.

And unique cabinet-depth dimensions allows for customized, built-in look. Please consult the installation manual for ventilation requirements.

**CS 1660** Premium NoFrost



**Capacity**

Refrigerator comp. cu.ft. (l)	11.3 (319)
NoFrost Freezer comp. cu.ft. (l)	4.2 (119)

**Outside dimensions**

in inches H/W/D	79-17/32"/29-17/32"/24-13/16"
in cm H/W/D	202/75/63

**Features**

2 separately adjustable cooling circuits for refrigerator and freezer compartments.

**This unit is also available as**

**CS 1611:** with door hinges left, without IceMaker



The latest 36" single door **CS 2060** offers nearly 20 cubic feet of capacity allowing it to hold a substantial amount of groceries while meeting all food storage demands. The products expansive and uninterrupted shelving easily accommodates oversized platters and containers while one drawer the width of the unit is perfect for meats, cheeses and dairy, two other deep drawers ensure proper care of fruits and vegetables.

Gallon holders and additional storage racks permit space for all sizes of beverages and sauces and the double freezer drawers are well appointed with easy-grasp stainless steel, handy self-closing mechanisms and maximized use of space.

**CS 2060** PremiumPlus NoFrost



**Capacity**

Refrigerator comp. cu.ft. (l)	13.4 (382)
NoFrost Freezer comp. cu.ft. (l)	6.0 (170)

**Outside dimensions**

in inches H/W/D	79-13/16"/ 35-7/8"/24-1/4"
in cm H/W/D	202.7/91/61.5

**Features**

2 separately adjustable cooling circuits for refrigerator and freezer compartments.

**This unit is also available as**

**CS 2061:** with door hinges left

**36" Freestanding Appliances**

Liebherr's 36" wide bottom mount refrigerator **CS 2062** offers almost 20 cubic feet of capacity to meet all your storage demands. With two elegant French doors in stainless steel, the unit ensures perfect clearance as well as elegant esthetics. Double freezer drawers on telescopic rails ensure convenient storage and easy access capability. Outstanding LED-light columns and enhanced vegetable and freezer drawer LED-lights create a perfect illumination.

The DuoCooling system with two separate variable speed compressors for the refrigerator and the freezer provides a superior cooling performance and maximum energy efficiency. Elegant GlassLine shelving is durable, easy to clean and withstands large amounts of pressure.



reddot design award  
winner 2009

**CS 2062 PremiumPlus NoFrost**



Capacity	
Refrigerator comp. cu.ft. (l)	13.6 (385)
NoFrost Freezer comp. cu.ft. (l)	6.0 (170)
Outside dimensions	
in inches H/W/D	80-9/32"/35-7/8"/24-1/4"
in cm H/W/D	203.9/91.0/61.5

**Features**  
2 separately adjustable cooling circuits for refrigerator and freezer compartments.

**This unit is also available as**  
CBS 2062: with BioFresh  
CS 2060/2061: with side swing door



Open the stylish stainless French doors on the new freestanding **CBS 2062** to reveal large capacity storage options and the most ideal conditions for food preservation. Two BioFresh drawers on telescopic rails, create an environment that actually allows vitamins and minerals in produce to continue to grow and as a result, contribute to a healthier lifestyle. Outstanding LED light columns and well-placed LED lights illuminate both BioFresh and double freezer drawers.

The duo cooling system with separate variable speed compressors for the refrigerator and the freezer provide superior performance and maximum energy efficiency – boasting the best ENERGY STAR® rating in its category.



reddot design award  
best of the best 2010



product  
design  
award  
2011

**CBS 2062** PremiumPlus BioFresh NoFrost



Capacity	
Refrigerator comp. cu.ft. (l)	10.4 (295)
BioFresh comp. cu.ft. (l)	2.4 (69)
NoFrost Freezer comp. cu.ft. (l)	6.0 (170)
Outside dimensions	
in inches H/W/D	80-9/32"/35-7/8"/24-1/4"
in cm H/W/D	203.9/91/61.5

Features	
2 separately adjustable cooling circuits for refrigerator and freezer compartments.	

**This unit is also available as**  
**CS 2062:** without BioFresh  
 Available until December 2011

# The 36" Performance Advantage



**Control System.** The elegant, high precision MagicEye control system featuring the innovative Touch control concept is flush mounted on top of the unit for a seamless design. It ensures that the selected tempera-

tures are kept to the very degree required. The Touch panel makes the control of all the functions of the unit easy and convenient.



**GlassLine shelving.** The elegant GlassLine equipment is tough, scratch resistant and easy to clean. The glass storage shelves and door racks have a satin finish and attractive trim which enhances the streamlined appearance of the refrigerator.



**Fruit and vegetable drawers.** The large fruit and vegetable drawers offer plenty of storage space for all your delicacies. For easy and secure handling, the drawers conveniently slide out on telescopic rails. Substantial aluminum trim ensures a sleek appearance and enhance the stability of the drawers. The CBS 2062 even offers the patented BioFresh technology for freshness that lasts up to 3x longer than conventional compartments.



**Water filter.** The activated carbon filter ensures pure water to produce perfectly fresh ice cubes. The electronic control of the unit lets you know when the filter needs to be exchanged.



**Automatic IceMaker.** Liebherr's IceMaker, which is permanently plumbed in, provides you with just the right supply of perfect ice cubes for every occasion. The two drawers will hold all the ice you'll need. The IceMaker automatically keeps your supplies topped up.



**GlassLine.** The elegant GlassLine fittings of Liebherr units also provide door storage shelves with gallon holder. The depth of these shelves is designed to hold gallon containers so that you can keep a large supply of milk or juice on hand.



**Freezer drawers.** Double freezer drawers mounted on smooth telescopic rails offer 6 cubic feet of storage space. A self-closing system for both drawers ensures easy and convenient handling. The freezer drawers are perfectly illuminated by LED-lights which are integrated in the inner liner for a flush design.



The **SBS 26S1**, with cabinet-depth dimension, offers an excellent alternative to a built-in without building in. Stainless steel on all sides gives the flexibility to have the refrigerator anywhere in the kitchen. Comprised of the **CS 1360** and **CS 1311**, this unit can be installed as a side-by-side configuration, or separated into individual towers. LED light towers illuminate the well-designed interior while Liebherr's SmartSteel ensures the outside always looks pristine. This unit also houses an advanced automatic IceMaker for perfect ice cubes every time.

**SBS 26S1** Premium NoFrost



Capacity	
Refrigerator comp. cu.ft. (l)	19.4 (550)
NoFrost Freezer comp. cu.ft. (l)	6.6 (188)
Outside dimensions	
in inches H/W/D	79-3/16"/47-1/2"/24-13/16"
in cm H/W/D	201.1/120.6/63
Features	
2 separately adjustable cooling circuits for refrigerator and freezer compartments.	
left appliance:	CS 1311
right appliance:	CS 1360
Solo appliances are ENERGY STAR® rated	



Over 30 cubic feet of capacity and 60 inches of space make for an extraordinary refrigeration and freezing product! The solo appliances of the **SBS 32S1** are ENERGY STAR® rated (as are all Liebherr refrigerators) even though it handles large capacity storage requirements with ease. Professional looks are well matched with professional performance. Precise electronic touch controls allow the temperature settings and advanced features in the refrigerator and freezer units to be controlled separately. DuoCooling means that the garlic odor from pasta leftovers will never meet the air that circulates in the freezer. And the interior space is designed for the best preservation of abundant fresh foods and containers of all sizes.

**SBS 32S1 Premium NoFrost**

Capacity	
Refrigerator comp. cu.ft. (l)	22.5 (638)
NoFrost Freezer comp. cu.ft. (l)	8.4 (238)
Outside dimensions	
in inches H/W/D	79-17/32"/59-1/2"/24-13/16"
in cm H/W/D	202/151.1/63

Features	
Two separately adjustable cooling circuits for refrigerator and freezer compartments.	
left appliance:	CS 1611
right appliance:	CS 1660
Solo appliances are ENERGY STAR® rated	



# The Freestanding Advantage



**Digital Temperature Control.** Thanks to precise electronic controls and clearly arranged function keys, the units are simple and easy to operate. The elegant and exact MagicEye control keeps the temperature at the level you select.



Nearly all the stainless steel doors come with a **SmartSteel** surface. SmartSteel significantly reduces the visibility of finger marks and thanks to the high-quality finish of the stainless steel, is very easy to clean and far more scratch-resistant.



The CS 1660 and CS 1611 30" units have a unique **LED** light integrated at the bottom of the refrigerator door that shines down into freezer drawers when open.



The **slimline door handles** with integrated opening mechanism in stainless steel are fitted at a convenient height for easy opening.



**Duo Cooling System.** Ice-cold air circulates around the frozen foods, freezing it quickly and in a manner that seals in vitamins. Air moisture is discharged from the freezing area. Ice does not form in the appliance and defrosting is unnecessary. The cooling unit generates its own cold air with a separate device. No air is exchanged between the refrigerator and freezer sections. This keeps odors from becoming mixed, and foods stored in the refrigerator section are kept from drying out.



**Drawers on telescopic rails.** Vitamin-rich foods can be conveniently stored in spacious fruit and vegetable drawers. The transparent sliding drawers pull out on smooth telescopic rails.



**Gallon Holder.** The elegant GlassLine fittings of Liebherr units also provide door storage shelves with a gallon holder. The depth of these shelves is designed to hold gallon containers so that you can keep a large supply of milk or juice on hand.



**VarioSpace.** Liebherr's VarioSpace system for the freezer compartment allows you to remove a drawer and the shelf underneath it to create extra storage space. You can quickly make room for even the biggest turkey. **FrostSafeSystem.** In the freezer, food is frozen with cooled, continually circulating air and stored in extra deep, completely enclosed drawers. The transparent drawers ensure that you can always see all the frozen food.



Freestanding Appliances	CS 1360 Premium NoFrost	CS 1400 Premium NoFrost	CS 1640 Premium NoFrost	CS 1660 Premium NoFrost	CS 2060 PremiumPlus NoFrost	CS 2062 PremiumPlus NoFrost	CBS 2062 PremiumPlus BioFresh NoFrost	SBS 2651 Premium NoFrost	SBS 3251 Premium NoFrost
Freestanding Stainless Steel	•	•	•	•	•	•	•	•	•
ENERGY STAR®	•	•	•	•	•	•	•	• / •	• / •
Energy consumption in 365 days kWh	420	423	394	394	452	452	450	840	788
<b>Appliance features</b>									
Total capacity cu.ft. (l)	13 (369)	14 (396)	15.2 (431)	15.5 (438)	19.4 (552)	19.6 (555)	18.8 (534)	26 (738)	30.9 (876)
Capacity of refrigerator / BioFresh comp. cu.ft. (l)	9.7 (275)	11 (312)	11 (312)	11.3 (319)	13.4 (382)	13.6 (385)	10.4 (295) / 2.4 (69)	19.4 (550)	22.5 (638)
Capacity of wine compartment cu.ft. (l) / btls	–	–	–	–	–	–	–	–	–
Capacity of freezer compartment cu.ft. (l)	3.3 (94)	3 (84)	4.2 (119)	4.2 (119)	6.0 (170)	6.0 (170)	6.0 (170)	6.6 (188)	8.4 (238)
Shipping weight lbs. (kg)	214.1 (97.3)	253 (115)	286 (130)	283.8 (129)	389.4 (177)	389.4 (177)	389.4 (177)	424.8 (193.1)	563.2 (256)
Climate rating 1)	SN-T	SN-T	SN-T	SN-T	SN-T	SN-T	SN-T	SN-T	SN-T
Automatic refrigerator defrosting	•	•	•	•	•	•	•	•	•
Automatic freezer defrosting	•	•	•	•	•	•	•	•	•
Automatic IceMaker	•	–	•	•	•	•	•	•	•
Automatic IceMaker can be switched off	•	–	•	•	•	•	•	•	•
Ice cube output lbs. (kg) / 24h	2.2 (1)	–	2.2 (1)	2.2 (1)	3.0 (1.3)	3.0 (1.3)	3.0 (1.3)	2.2 (1)	2.2 (1)
Ice cube stock lbs. (kg)	3.3 (1.5)	–	3.3 (1.5)	3.3 (1.5)	6.0 (2.7)	6.0 (2.7)	6.0 (2.7)	3.3 (1.5)	3.3 (1.5)
Door hinges 2)	right (r)	right (r)	right (r)	right (r)	right	left / right	left / right	left / right	left / right
<b>Dimensions in. (cm)</b>									
Overall height in. (cm)	79-3/16" (201.1)	73-1/4" (186)	79-17/32" (202)	79-17/32" (202)	79-13/16" (202.7)	80-9/32" (203.9)	80-9/32" (203.9)	79-3/16" (201.1)	79-17/32" (202)
Overall width in. (cm)	23-5/8" (60)	29-17/32" (75)	29-17/32" (75)	29-17/32" (75)	35-7/8" (91)	35-7/8" (91)	35-7/8" (91)	47-1/2" (120.6)	59-1/2" (151.1)
Overall depth in. (cm)	24-13/16" (63)	24-13/16" (63)	24-13/16" (63)	24-13/16" (63)	24-1/4" (61.5)	24-1/4" (61.5)	24-1/4" (61.5)	24-13/16" (63)	24-13/16" (63)
Cutout height in. (cm)	80" (203.2)	74" (186)	80" (203.2)	80" (203.2)	80" (203.2)	80" (203.2)	80" (203.2)	80" (203.2)	80" (203.2)
Cutout width in. (cm)	23-3/4" (60.3)	30" (76.2)	30" (76.2)	30" (76.2)	36" (91.4)	36" (91.4)	36" (91.4)	48" (121.9)	60" (152.4)
Cutout depth in. (cm)	24" (61)	24" (61)	24" (61)	24" (61)	24" (61)	24" (61)	24" (61)	24" (61)	24" (61)
<b>Energy supply</b>									
Voltage V/Hz	115 / 60	115 / 60	115 / 60	115 / 60	115 / 60	115 / 60	115 / 60	115 / 60	115 / 60
<b>Also available as</b>	CS 1311: door hinges left, without IceMaker			CS 1611: door hinges left, without IceMaker	CS 2061: door hinges left				

1) Climate rating SN = suitable for ambient temperatures of +50 °F to +90 °F (+10 °C to +32 °C)  
 Climate rating ST = suitable for ambient temperatures of +61 °F to +100 °F (+16 °C to +38 °C)  
 Climate rating T = suitable for ambient temperatures of +61 °F to +109 °F (+16 °C to +43 °C)

2) Door hinges: r = reversible

## Fully Integrated Appliances

**The stylish answer to freshness.** In custom kitchens, integrated appliances are the most stylish option available – they're totally out of sight. Built-in appliances fit harmoniously into a kitchen's design; yet there is no secret of what lies within. By comparison, Liebherr's integrated appliances are concealed behind cabinet doors allowing you to show off the materials, colors and design of your custom kitchen to full advantage.

The **HC 1060** fully-integrated refrigerator-freezer combination incorporates Liebherr's patented SoftSystem, ensuring that the doors are closed gently even when they are fully loaded. The automatic IceMaker always keeps your supply of perfectly shaped ice cubes topped up. Unique LED light columns and LED freezer lighting is energy efficient and does not affect the internal temperature of the refrigerator. This 24" appliance makes an impressive addition to small space kitchens.

### HC 1060 PremiumPlus NoFrost



#### Capacity

Refrigerator comp. cu.ft. (l)	7.1 (200)
NoFrost Freezer comp. cu.ft. (l)	2.3 (66)

#### Outside dimensions

in inches H/W/D	69-21/32"/21-15/16"/21-7/32"
in cm H/W/D	177/55.7/53.9

#### Features

2 separately adjustable cooling circuits for refrigerator and freezer compartments.

#### This unit is also available as

- HC 1011:** door hinges left, without IceMaker
- HC 1001:** door hinges left, without IceMaker, SoftSystem and LED-lighting
- HC 1050:** door hinges right, with IceMaker but without SoftSystem and LED-lighting

## Fully Integrated Appliances **30"**

Stylish and sleek the 30" fully integrated **HCB 1561** offers impressive performance features and design flexibility. The smart DuoCooling system with separate exceptionally efficient variable speed compressors ensures no air is exchanged between compartments guaranteeing food won't dry out and the freezer is always ice free. Plus, boost freshness up to 3 x longer with BioFresh that retains healthy vitamins, aroma and appetizing appearance. Each drawer can be adjusted individually and provides ideal humidity for versatile storage solutions. The automatic IceMaker which is permanently plumbed in and an integrated water filter with activated charcoal provides just the right supply of perfect cubes.

The **HC 1540** model is perfect for a seamless design because it is cleverly concealed behind cabinet doors. With a fully integrated door-on-door system that incorporates strong hinges for a convenient closing of doors even when fully loaded. Double freezer drawers mounted on smooth telescopic rails offer more than 4 cubic feet of storage space and the drawer system offers convenient handling and viewing of food stored. A water connection is not needed for the IceMaker thanks to a well appointed 1.5 liter internal water tank that is conveniently removable for replenishing water used to produce cubes that are just right.

### HCB 1561 PremiumPlus BioFresh NoFrost



#### Capacity

Refrigerator comp. cu.ft. (l)	7.7 (219)
BioFresh comp. cu.ft. (l)	2.1 (60)
NoFrost Freezer comp. cu.ft. (l)	4.3 (122)

#### Outside dimensions

in inches H/W/D	79-13/16"/29-13/16"/24"
in cm H/W/D	202.7/75.7/61

#### Features

2 separately adjustable cooling circuits for refrigerator and freezer compartments.

#### This unit is also available as

**HCB 1560:** with door hinges right, IceMaker via water connection and BioFresh

**HC 1540:** with door hinges right, IceMaker via internal water tank, without BioFresh

**HC 1541:** with door hinges left, IceMaker via internal water tank, without BioFresh

Stainless Steel Door (80" or 84" height) and Drawer panels available

## Fully Integrated Appliances

36"

Show off the materials and design of your custom kitchen to the fullest with the stylish fully integrated **HC 2060**. The new 36" single door model features strong hinges for a convenient closing of doors as well as LED lighting and elegant GlassLine shelving including door storage of gallon containers. Large fruit and vegetable drawers along with double freezer drawers mounted on smooth telescopic rails offer plenty of convenient storage space.

An automatic IceMaker featuring the most technically advanced water filter provides an ample supply of perfect ice cubes.

### HC 2060 PremiumPlus NoFrost



#### Capacity

Refrigerator comp. cu.ft. (l)	13.4 (382)
NoFrost Freezer comp. cu.ft. (l)	6.0 (170)

#### Outside dimensions

in inches H/W/D	79-13/16"/35-13/16"/24"
in cm H/W/D	202.7/91/61

#### Features

2 separately adjustable cooling circuits for refrigerator and freezer compartments.

#### This unit is also available as

**HC 2061:** with door hinges left

Stainless Steel Door (80" or 84" height) and Drawer panels available



Sharing the ultimate performance features of the **CBS 2062** (see pages 38-39), elegant French door styling is available in two other 36" designs for custom kitchens. Choose from the fully integrated **HCB 2062** (pictured here) concealed behind cabinetry or the professional esthetics of stainless steel doors offered in either 80" or 84" heights. Whichever appliance finish fits the kitchen, the 2062 Series is highlighted by BioFresh technology, Liebherr's popular duo cooling system and double freezer drawers with self-close mechanisms.

Standard accessories for this series are available to adapt to 80" or 84" high installation requirements.

**HCB 2062** PremiumPlus BioFresh NoFrost

**Capacity**

Refrigerator comp. cu.ft. (l)	10.4 (295)
BioFresh comp. cu.ft. (l)	2.4 (69)
NoFrost Freezer comp. cu.ft. (l)	6.0 (170)

**Outside dimensions**

in inches H/W/D	79-13/16"/35-13/16"/24"
in cm H/W/D	202.7/91/61

**Features**

2 separately adjustable cooling circuits for refrigerator and freezer compartments.

Stainless Steel Door (80" or 84" height) and Drawer panels available

# The 36" Integrated Advantage



**Electronic MagicEye.** The elegant, high precision MagicEye control unit featuring the innovative Touch control concept ensures that the selected temperatures are kept to the very degree required. The Touch panel makes the control of all the functions easy and very convenient.



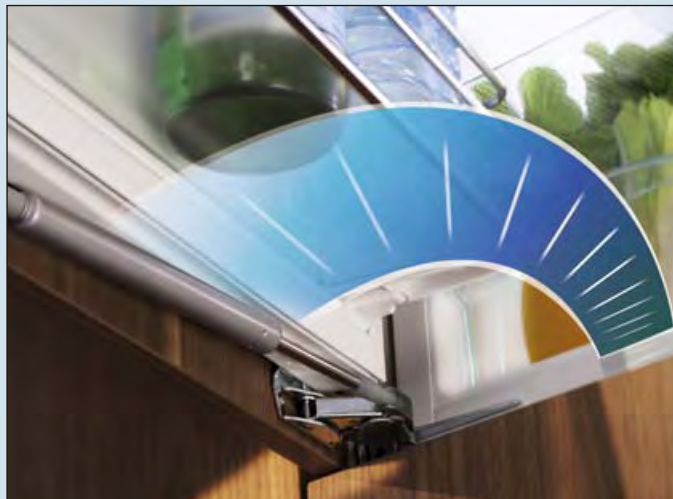
**GlassLine shelving.** The elegant GlassLine equipment is tough, scratch resistant and easy to clean. The glass storage shelves and door racks have a satin finish and attractive trim which enhance the streamlined appearance of the refrigerator.



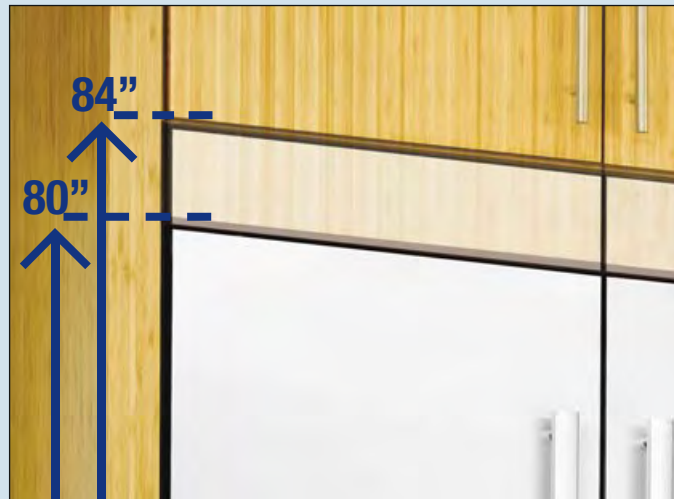
**Gallon holder & door racks.** The elegant GlassLine fittings of Liebherr units also provide door storage shelves with a gallon holder. The depth of these shelves is designed to hold gallon containers so that you can keep a large supply of milk or juice on hand.



**Automatic IceMaker.** Liebherr's IceMaker, which is permanently plumbed in, provides you with just the right supply of perfect ice cubes for every occasion. The two drawers will hold all the ice you'll need. The IceMaker automatically keeps your supplies topped up.



Unique to Liebherr is our patented **SoftSystem**. This system, often used in high-end cabinetry, ensure that the door closes gently, even when fully loaded.



**80" and 84".** To meet the requirements of different installation situations, Liebherr cares about every little detail. The fully integrated models with stainless steel doors are available with two standard accessory kits, for an installation in either 80" or 84" high cabinets.



**Fruit and vegetable drawers.** The large fruit and vegetable drawers offer plenty of storage space for all your delicacies. For an easy and secure handling, the drawers conveniently slide out on telescopic rails. Substantial aluminium trim at the front side ensures an elegant appearance and enhances the stability of the drawers. The HCB and HCBS 2062 (pictured above) even offer patented BioFresh drawers to preserve food up to 3x longer than conventional compartments.



**Freezer drawers.** Double freezer drawers mounted on smooth telescopic rails offer 6 cubic feet of storage space. A self-closing system for both drawers ensures an easy and convenient handling. The freezer drawers are perfectly illuminated by LED-lights which are integrated in the inner liner for a flush design.



The **SBS 20H1** Premium Plus model provides more fresh ideas for your fresh food. Enjoy new-found liberty in your kitchen design and maximize your very own personalized look with over 20 cubic feet of refrigeration concealed behind your kitchen cabinetry. Installed in a tall kitchen cupboard, the refrigerator doors simply open in unison with the cupboard doors.

This side-by-side model can also be separated and the two 24" units used in different areas of the kitchen. Enjoy the design flexibility and the cutting edge refrigeration technology to keep your food fresh and vitamin-rich.

#### SBS 20H1 PremiumPlus NoFrost



#### Capacity

Refrigerator comp. cu.ft. (l)	14.2 (400)
NoFrost Freezer comp. cu.ft. (l)	4.6 (132)

#### Outside dimensions

in inches H/W/D	69-21/32"/2 x 21-15/16"/21-7/32"
in cm H/W/D	177/2 x 55.7/53.9

#### Features

2 separately adjustable cooling circuits for refrigerator and freezer compartments.

left appliance:	HC 1011
right appliance:	HC 1060

Solo appliances are ENERGY STAR® rated

#### This unit is also available as

**SBS 20H0:** without LED-lighting and SoftSystem



Liebherr's **SBS 19H0** Side-by-Side unit comprised of a 24" fully integrated refrigerator with BioFresh (**HRB 1110**) and a 24" fully integrated freezer with IceMaker (**HF 851**) is the perfect combination for any kitchen. Hidden away behind custom cabinetry, enjoy features such as newly designed BioFresh safes (Read more about BioFresh on pages 8-13), efficient LED-lighting throughout, and variable bottle shelving.

In the full freezer tower, transparent drawers on telescopic rails with safety glass shelf dividers organize the frozen foods kept FrostSafe with continual circulated air. Both sides incorporate SoftSystem door technology and streamlined Liebherr space design.

**SBS 19H0** PremiumPlus BioFresh NoFrost



**Capacity**

Refrigerator comp. cu.ft. (l)	10.8 (307)
NoFrost Freezer comp. cu.ft. (l)	7.7 (217)

**Outside dimensions**

in inches H/W/D	69-21/32"/2 x 21-15/16"/21-7/32"
in cm H/W/D	177/2 x 55.7/53.9

**Features**

3 separately adjustable temperature zones	
left appliance:	HF 851
right appliance:	HRB 1110
Solo appliances are ENERGY STAR® rated	

**This units are also available separately**

**HF 851:** fully integrated freezer with IceMaker

**HRB 1110:** fully integrated refrigerator with BioFresh

# The Fully-Integrated Advantage



**Freezer compartment lighting.** For the HC 1060, HC 1011 and the SBS 20H1 models this innovation provides a perfect view inside the freezer compartment. Integrated above the freezer drawers is a LED light strip ensuring ideal illumination of the opened, transparent drawers to give you an even better view on the stored food.



**The door-on-door system.** With door-on-door assembly, the unit door is affixed directly onto the cabinet door. This ensures a better isolation and the hinges fit perfectly to quality cabinetry.



**The patented SoftSystem** ensures that the door closes gently even when fully loaded or slammed shut.



**Automatic IceMaker.** Liebherr's IceMaker, which is permanently plumbed in, provides you with just the right supply of perfect ice cubes for every occasion. The two drawers will hold all the ice you'll need. The IceMaker automatically keeps your supplies topped up.



**External Waterfilter.** The new external water filter for the IceMaker allows for flexibility in installation and space. Choose to install above, beside or anywhere around the refrigerator to make filter changes effortless. (Not available in the HC 1060.)



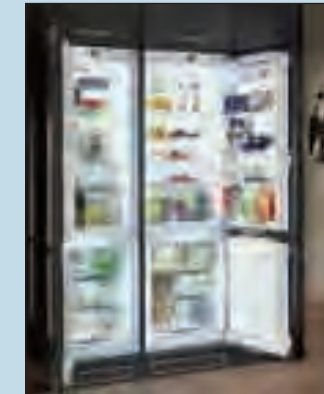
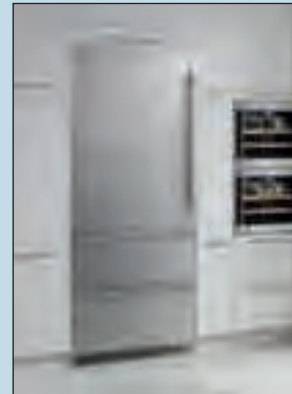
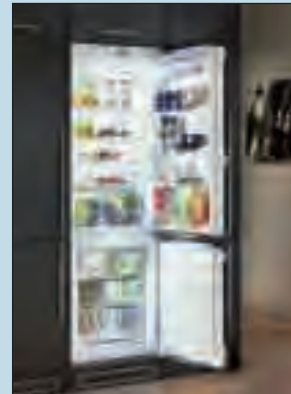
**Digital Temperature Control.** Thanks to precise electronic controls and clearly arranged function keys, the units are simple and easy to operate. The elegant and exact MagicEye control keeps the temperature at the level you select. The SuperCool function reduces the temperature of the refrigerator to +36 °F (+2 °C) for 6 hours. This is ideal for chilling fresh food quickly. In the freezer, the automatic SuperFrost function ensures that the vitamins in food are optimally preserved when frozen. It quickly reduces the temperature in your freezer to as low as -26 °F (-32 °C) so you can freeze fresh food quickly and carefully.



**Vegetable bins.** The new transparent vegetable bins give a clean appearance and a clear view of all that's inside. Sitting on rollers, the drawers slide effortlessly and pull out smoothly for wipe clean convenience.



**Light columns.** For Liebherr's PremiumPlus appliances, unique LED light columns are integrated into both sides of the compartment liner. Inside the columns are numerous LED lights that ensure uniform lighting throughout the interior.



Fully Integrated Appliances	HC 1060 PremiumPlus NoFrost	HCB 1560* PremiumPlus BioFresh NoFrost	HC 2060 PremiumPlus NoFrost	HCB 2062* PremiumPlus BioFresh NoFrost	SBS 20H1 PremiumPlus NoFrost	SBS 19HO PremiumPlus BioFresh NoFrost
Fully Integrated	•	–	•	–	•	•
Stainless Integrated	–	•	–	•	–	–
ENERGY STAR®	•	•	•	•	• / •	• / •
Energy consumption in 365 days kWh	407	427	452	450	814	725
<b>Appliance features</b>						
Total capacity cu.ft. (l)	9.4 (266)	14.1 (400)	19.4 (552)	18.8 (534)	18.8 (532)	18.5 (524)
Capacity refrigerator / BioFresh comp. cu.ft. (l)	7.1 (200)	7.7 (219) / 2.1 (60)	13.4 (382)	10.4 (295) / 2.4 (69)	14.2 (400)	10.8 (307)
Capacity of freezer compartment cu.ft. (l)	2.3 (66)	4.3 (122)	6.0 (170)	6.0 (170)	4.6 (132)	7.7 (217)
Shipping weight lbs. (kg)	178.2 (81)	323.4 (147)	387.2 (170)	391.6 (178)	(352.2) 160.1	392.3 (178.3)
Climate rating 1)	SN-T	SN-T	SN-T	SN-T	SN-T	SN-ST
Automatic refrigerator defrosting	•	•	•	•	•	•
Automatic freezer defrosting	•	•	•	•	•	•
Automatic IceMaker	•	•	•	•	•	•
Automatic IceMaker can be switched off	•	•	•	•	•	•
Ice cube output lbs. (kg)/24h	2.2 (1)	3.0 (1.3)	3.0 (1.3)	3.0 (1.3)	2.2 (1)	2.2 (1)
Ice cube stock lbs. (kg)	3.3 (1.5)	6.0 (2.7)	6.0 (2.7)	6.0 (2.7)	3.3 (1.5)	3.3 (1.5)
Door hinges 2)	right (r)	right	right	right (r)	left / right	left / right
<b>Dimensions in. (cm)</b>						
Overall height in. (cm)	69-21/32" (177)	79-13/16" (202.7)	79-13/16" (202.7)	79-13/16" (202.7)	69-21/32" (177)	69-21/32" (177)
Overall width in. (cm)	21-15/16" (55.7)	29-13/16" (75.7)	35-13/16" (91)	35-13/16" (91)	21-15/16" (55.7) each	21-15/16" (55.7) each
Overall depth in. (cm)	21-7/32" (53.9)	24" (61)	24" (61)	24-7/32" (61.8)	21-7/32" (53.9)	21-7/32" (53.9)
Cutout height in. (cm)	69-3/4"-70-3/8" (177.2-178.8)	80" (203.2)	80" (203.2)	80" (203.2)	69-3/4"-70-3/8" (177.2-178.8)	69-3/4"-70-3/8" (177.2-178.8)
Cutout width in. (cm)	max. 22-3/4" (57.8)	30" (76.2)	36" (91.4)	36" (91.4)	max. 22-3/4" (57.8) each	max. 22-3/4" (57.8) each
Cutout depth in. (cm)	min. 21-21/32" (55)	min. 24" (61)	min. 24" (61)	min. 24-3/4" (62.9)	min. 21-21/32" (55)	min. 21-21/32" (55)
<b>Energy supply</b>						
Voltage V/Hz	115 / 60	115 / 60	115 / 60	115 / 60	115 / 60	115 / 60
<b>Also available as</b>	<b>HC 1011:</b> door hinges left, without IceMaker <b>HC 1001:</b> door hinges left, without IceMaker SoftSystem and LED-lighting <b>HC 1050:</b> door hinges right, with IceMaker but without SoftSystem and LED-lighting	<b>HC 1540:</b> custom finish with door hinges right 3) <b>HC 1541:</b> custom finish with door hinges left 3) <b>HCB 1560:</b> custom finish with door hinges right 4) <b>HCB 1561:</b> custom finish with door hinges left 4) Stainless Steel Door (80" or 84" height) and Drawer panels available	<b>HC 2061:</b> fully integrated, custom finish, door hinges left		<b>SBS 20H0:</b> without LED-lighting and SoftSystem	<b>HRB 1110:</b> single unit refrigerator, door hinges right <b>HF 851:</b> single unit freezer, door hinges left

1) Climate rating SN = suitable for ambient temperatures of +50 °F to +90 °F (+10 °C to +32 °C)  
Climate rating ST = suitable for ambient temperatures of +61 °F to +100 °F (+16 °C to +38 °C)  
Climate rating T = suitable for ambient temperatures of +61 °F to +109 °F (+16 °C to +43 °C)

2) Door hinges: r = reversible  
3) With water tank but without BioFresh  
4) With IceMaker and BioFresh

\* shown with accessory stainless steel door and drawer panels



# Wine Cabinets

You may want to look your fine wine in the eye, not hide it under the counter. Liebherr lets you gaze at eye-level on the gorgeous **HWS 1800**, the fully integrated wine unit that holds 18 Bordeaux bottles in an ideal storage environment. The innovative styling allows the unit to sit flush with cabinetry and its recessed handle maintains a smooth line. When designing the custom kitchen, take advantage of the flexibility to put this unique modular unit anywhere.

The temperature is continuously adjustable from 41° to 68 °F (5° to 20 °C) and the LED ceiling light is dimmable to cast a cool glow across the room. The insulated glass door with UV protection and the activated charcoal filter protect the wine from busy kitchen influences such as light and odor.

For 30 inch wide cabinets Liebherr offers a special trim kit with stainless steel panels.



## HWS 1800 GrandCru



Capacity	18 750 ml Bordeaux bottles
Outside dimensions	
in inches H/W/D	17-3/8"/21-15/16"/22"
in cm H/W/D	44/55.7/55.8



The **WU 4000** offers a number of innovative solutions for wine storage. Controls are integrated into the insulation layer between the temperature zones, making it possible to set two different temperatures within the unit between +41 °F (+5 °C) and +68 °F (+20 °C). Store red and white wines according to your preference – use the entire cabinet for one or store both, each at its optimum drinking temperature. Because the wine cabinet ventilates through the toe kick, no counter slots are necessary, and the cabinet can be integrated easily and elegantly into your kitchen. The glass door with its high-quality, elegant stainless steel frame allows you to enjoy a top-quality wine experience before you even select a bottle. The LED interior light can be dimmed to provide an ambient atmosphere.

**WU 4000** Vinidor



<b>Capacity</b>	40 750 ml Bordeaux bottles
<b>Outside dimensions</b>	
in inches H/W/D	33-7/8"/23-1/2"/22-17/32"
in cm H/W/D	86/59.7/57.2

This unit is also available as  
**WS 4000** freestanding

24"

## Wine Cabinets

This wine storage cabinet is ideal for storing wines for long periods of time allowing them to mature to perfection. Depending on what temperature the appliance is set at, it can also be used for keeping white or red wine at exactly the right temperature for serving. The **WU 5600** is the smart under counter solution that allows you to store wine at a temperature level between +41 °F (+5 °C) and +68 °F (+20 °C). With a constant supply of fresh air via an activated charcoal filter and continuously circulating air cooling, this appliance guarantees consistently high air quality during the maturing process. A specially developed compressor ensures that the wines are stored vibration-free. Since the wine cabinet ventilates through the toe kick, no counter slots are necessary and the cabinet can be integrated easily and elegantly into your kitchen. This unit also boasts a digital temperature display conveniently located at the top of the cabinet with visibility through the elegant glass door.



### WU 5600 GrandCru



**Capacity** 56 750 ml Bordeaux bottles

**Outside dimensions**

in inches H/W/D 33-7/8"/23-1/2"/22-17/32"

in cm H/W/D 86/59.7/57.2



The three temperature zones of the **WS 14300** allow you to store all your preferred wines at the exact temperature you desire – be it champagne, white, red or rose wine.

Every temperature zone can be adjusted separately and independent from the other zones, ranging from +41 °F (+5 °C) to +68 °F (+20 °C). Use two zones to keep your wine at the right drinking temperature and one zone for keeping the wine at the perfect storage temperature offering unlimited possibilities.

The wooden pull-out shelves on smooth telescopic rails make selecting a bottle convenient. The glass door with its high-quality, elegant stainless steel surround allows you to enjoy a top-quality wine experience before you even select a bottle. The unit's door is incredibly easy to open with the integrated opening mechanism door handle. Activated charcoal filters ensure high air quality free of dust, dirt and smell.

The freestanding stainless steel wine storage cabinet flawlessly integrates into the design of your kitchen.



reddot design award  
winner 2008

**WS 14300** Vinidor



Capacity	143 750 ml Bordeaux bottles
Outside dimensions	
in inches H/W/D	73-1/16"/26"/26-7/16"
in cm H/W/D	185.5/66/67.1

26"

## Wine Cabinets

Liebherr's **WS 13500** is the perfect solution if you want to store a large supply of wine or champagne. As in all Liebherr wine storage units, special attention is paid to conditions that may affect storage, such as vibration, light, air quality, temperature and humidity.

Thanks to vibration free compressors, double glazed doors, forced air cooling and a fresh air supply via activated charcoal filter the unit creates ideal climate conditions for the storage of precious bottles. Up to 135 Bordeaux bottles can be stored in this appliance.

The attractive wooden shelves on pull out rails and the elegant glass door with stainless steel frame make the WS 13500 the first choice for the highest standards. The accurate electronic control system has a digital temperature display. The temperature can be set to the degree required in the range of +41 °F (+5 °C) and +68 °F (+20 °C).

Also, the lever handle with integrated opening mechanism, allows the door of the appliance to be opened conveniently with a minimum of effort.



### WS 13500 GrandCru



**Capacity** 135 750 ml Bordeaux bottles

**Outside dimensions**

in inches H/W/D 65-9/32"/26"/26-7/16"

in cm H/W/D 165.8/66/67.1



# The Wine Storage Advantage



**Activated Charcoal Filter.** The wine cabinets from Liebherr have an activated charcoal filter, which can be easily changed, that purifies the incoming fresh air to obtain the optimum odor-free quality. Each wine compartment in the Vinidor appliances range has an activated charcoal filter of its own.



All Vinidor appliances feature innovative **LED lighting**. There is LED lighting in each temperature zone, integrated in the ceiling and in the insulation plates. This advanced technology ensures uniform illumination throughout the interior. Since any heat generated by the LEDs is minimal, wines can be presented, bathed in light, for a longer time period.



Wine storage cabinets are equipped with **digital temperature display**. With this control system the temperatures can be set in the optimum range from +41 °F (+5 °C) to +68 °F (+20 °C).



**Integrated lock.** The undercounter models WU 4000 and WU 5600, and the RU 500 beverage center feature an integrated lock on top of the stainless steel door.



**Wine Rack.** Liebherr's wine units are equipped with wooden pull-out shelves on smooth telescopic rails. This makes selecting a bottle easy and convenient.



In the side-by-side, 5 temperature zone models (SBS 246 & SBS 2416) and the WS 13500 a **half-folding shelf** is perfect for storing wine already open or displaying your fine wine.



**Guaranteed UV protection.** The green or brown glass of the bottle does not shield the wine sufficiently from damaging light. All rooms have either artificial or natural light, that can affect wine storage. The tinted safety glass in the Liebherr wine cabinets guarantees the essential UV protection for your fine wines.



Peace and quiet are necessary for wines that are to be stored for long periods. Even minor vibrations can have a negative effect as they can stir up the fine components of the sediment. Specially developed **compressors** installed in the wine cabinets from Liebherr ensure that the wines are stored in a particularly low vibration environment.



Choose the undercounter beverage center **RU 500** for stylish storage or presentation of beverages, featuring a glass door providing a clear view and elegant stainless steel frame.

The appliance has two glass storage shelves with stainless steel trim and two pull out racks with wood facings. Bottles, cans and tinned food can be chilled in this appliance. The electronic control system is situated at the top of the interior and is visible through the glass door.

The temperature can be set from +37 °F (+3 °C) to +68 °F (+20 °C). This attractive undercounter beverage center accommodates 29 bottles of wine and 98 cans.

**RU 500** GrandCru



**Capacity** 29 750 ml Bordeaux bottles/98 cans

**Outside dimensions**

in inches H/W/D 33-7/8"/23-1/2"/23-17/32"

in cm H/W/D 86/59.7/57.2

## Outdoor refrigerator

24"

The Liebherr outdoor refrigerator **RO 500** is the perfect solution for your outdoor kitchen and your next barbeque season.

With weather resistant stainless steel on the exterior, it is protected against the elements and corrosion. It operates perfectly within ambient temperatures from +50 °F (+10 °C) to +109 °F (+43 °C).

The appliance has three glass storage shelves with stainless steel trim and two door racks (one adjustable) with elegant retainers. Bottles fit effortlessly in specially-designed grooves on the unit floor. The temperature can be set from +34 °F (+1 °C) to +57 °F (+14 °C). Because of its stylish look – completely stainless steel surround – the unit can also be used indoor and in bar and kitchen settings.



### RO 500 Premium



Capacity cu.ft. (l) 5.0 (142)

#### Outside dimensions

in inches H/W/D 33-7/8"/23-1/2"/22-17/32"

in cm H/W/D 86/59.7/57.2



# Design & Lifestyle

## WS 1200

On the bar in your recreation area, in the master bedroom, or well placed in your great room, Liebherr's **WS 1200** gives you premium wine storage in an attractive package anywhere. The well-appointed cabinet holds up to 12 Bordeaux (750 ml) on solid beech wood shelving and has a convenient drawer that can maintain a warmer temperature than the wine compartment to keep wine accessories, chocolates or candies. Energy efficient LED lighting can be controlled with a dimming function and a permanent "on mode" creates atmosphere without affecting the temperature of the wine. An activated charcoal filter, an insulated glass door with UV coating, and a precise temperature range from 41° to 68 °F (5° to 20 °C) provide ideal storage conditions for fine wine.

## XS 200

Liebherr's approach to refrigeration in their entire product line is to provide ideal conditions for food – fresh and frozen, and for wine. The approach to designing the new Liebherr Humidor is no exception. The innovative Magic Eye control systems allows precise control to establish the proper balance of temperature and humidity so important to the optimal storage for fine cigars.

The storage cabinet can be set from 60° to 68 °F (16° to 20 °C) and the humidity, controlled by a removable container for distilled water, can be set from 68% to 75% humidity depending on owner preferences.



### WS 1200 GrandCru



Capacity	12 750 ml Bordeaux bottles
Outside dimensions	
in inches H/W/D	24-1/8"/16-3/4"/18-13/16"
in cm H/W/D	61.2/42.5/47.8



### XS 200 Humidor



Capacity cu.ft. (l)	1.4 (39)
Outside dimensions	
in inches H/W/D	24-1/8"/16-3/4"/18-13/16"
in cm H/W/D	61.2/42.5/47.8



# The Design & Lifestyle Products



**LED lighting.** For ideal presentation of your best wine, the WS 1200 features LED lighting with dimmer function and separate switch. As the LEDs emit minimal heat and no UV radiation, the wine can be showcased bathed in light for lengthy periods, without compromising its quality.

**Drawer for accessories.** This practical drawer is used for storing wine accessories or to provide the right temperature for items such as chocolate or candy to enjoy with wine.



**Ideal humidity.** The integrated water tank is filled with one liter of distilled water. Humidity sensors regulate the water requirement and ensure that the humidity is kept exactly to the level selected. A visual display gives the user plenty of notice when water needs to be replenished.



**LED lighting.** Liebherr's humidor has LED lighting with dimmer function incorporated in the glass door. As the LEDs emit virtually no heat, the cigars can be exposed to the light for long periods of time without damage.



**Control system.** The ideal storage temperature for storing wine for prolonged periods is 46 °F (+8 °C) to 54 °F (+12 °C). White wine to be kept on hand at serving temperature should ideally be stored at a temperature below 50 °F (10 °C) and red wine at up to 64 °F (18 °C). With this in mind the touch electronic control system allows the temperature to be set to the exact degree required between 41 °F (+5 °C) to 68 °F (+20 °C).



**Wall mounting.** The WS 1200 can also be wall-mounted to save space, provide an attractive focal point and offer convenient access for serving.



**Fine cedar wood.** The two presentation boxes, varying in height and the two wooden shelves are crafted from Spanish cedar wood.



**Presentation boxes.** The boxes are ideal for storing loose cigars and can easily be removed for presentation purposes.



	HWS 1800 GrandCru	WU 4000 Vinidor	WU 5600 GrandCru	WS 14300 Vinidor	WS 13500 GrandCru	RU 500 GrandCru	RO 500 Premium	WS 1200 GrandCru	XS 200 Humidor
Built-under Stainless Steel	–	•	•	–	–	•	•	–	–
Built-in Custom Finish	–	–	–	–	–	–	–	–	–
Freestanding Stainless Steel	–	–	–	•	•	–	•	•	•
Stainless Integrated	•	–	–	–	–	–	–	–	–
ENERGY STAR®	–	–	–	–	–	–	•	–	–
Energy consumption in 365 days kWh	n.a.	n.a.	n.a.	n.a.	n.a.	474	321	n.a.	n.a.
<b>Appliance features</b>									
Total capacity cu.ft. (l)	1.7 (47)	4.8 (135)	5 (142)	13.4 (379)	13.6 (386)	5 (142)	5 (142)	1.7 (47)	1.4 (39)
Capacity refrigerator / BioFresh comp. cu.ft. (l)	–	–	–	–	–	–	5 (142)	–	–
Capacity of wine compartment cu.ft. (l)	1.7 (47)	4.8 (135)	5 (142)	13.4 (379)	13.6 (386)	5 (142)	–	1.7 (47)	–
max. No. of Bordeaux btls 0.75 Ltr. 3)	18 Bordeaux bottles	40 Bordeaux bottles	56 Bordeaux bottles	143 Bordeaux bottles	135 Bordeaux bottles	29 Bordeaux bottles + 98 cans	–	12 Bordeaux bottles	–
Shipping weight lbs. (kg)	68.2 (31)	132 (60)	132 (60)	270.6 (123)	204.6 (93)	129.8 (59)	114.4 (52)	70.4 (32)	72.6 (33)
Climate rating 1)	SN	SN-ST	SN-ST	SN-ST	SN-ST	SN-ST	SN-T	SN	N
Automatic refrigerator defrosting	–	–	–	–	–	–	•	–	–
Door hinges 2)	right (r)	right (r)	right (r)	right (r)	right (r)	right (r)	right (r)	right	right
<b>Dimensions in. (cm)</b>									
Overall height in. (cm)	17-3/8" (44)	33-7/8" (86)	33-7/8" (86)	73-1/16" (185.5)	65-9/32" (165.8)	33-7/8" (86)	33-7/8" (86)	24-1/8" (61.2)	24-1/8" (61.2)
Overall width in. (cm)	21-15/16" (55.7)	23-1/2" (59.7)	23-1/2" (59.7)	26" (66)	26" (66)	23-1/2" (59.7)	23-1/2" (59.7)	16-3/4" (42.5)	16-3/4" (42.5)
Overall depth in. (cm)	22" (55.8)	22-17/32" (57.2)	22-17/32" (57.2)	26-7/16" (67.1)	26-7/16" (67.1)	22-17/32" (57.2)	22-17/32" (57.2)	18-13/16" (47.8)	18-13/16" (47.8)
Cutout height in. (cm)	17-3/4" (45)	34"-34-1/2" (86.4-87.6)	34"-34-1/2" (86.4-87.6)	75" (190.5)	68" (172.7)	34"-34-1/2" (86.4-87.6)	34 to 34-1/2" (86.4-87.6)	–	–
Cutout width in. (cm)	22-1/16" (56)	24" (61)	24" (61)	26" (66)	26" (66)	24" (61)	24" (61)	–	–
Cutout depth in. (cm)	min. 21-21/32" (55)	24" (61)	24" (61)	24" (61)	24" (61)	24" (61)	24" (61)	–	–
<b>Energy supply</b>									
Voltage V/Hz	115 / 60	115 / 60	115 / 60	115 / 60	115 / 60	115 / 60	115 / 60	115 / 60	115 / 60
<b>Also available as</b>		<b>WS 4000: Freestanding</b>							

1) Climate rating SN = suitable for ambient temperatures of +50 °F to +90 °F (+10 °C to +32 °C)  
 Climate rating ST = suitable for ambient temperatures of +61 °F to +100 °F (+16 °C to +38 °C)  
 Climate rating T = suitable for ambient temperatures of +61 °F to +109 °F (+16 °C to +43 °C)

2) Door hinges: r = reversible  
 3) These models are only bound for storing wine. Maximum DIN norm Bordeaux bottles capacity (0.75 l)  
 Vinidor/GrandCru as per norm NF H 35-124 (H: 300.5 mm, Ø 76.1 mm)