

Regional Vaccine Network Southern Tier Hub



Regional Vaccination Plan

January 8, 2021



Hubs must develop Regional Vaccination Plans that include these required Hub MOU components.

DEVELOPED BY:
John Carrigg
President & CEO

Christina Boyd
Vice President, Community Relations

Christina Dolan
Dir. Public Policy & Program Development

Danielle Donlin
Vice President, Physician Practices

Amine Hila, MD
Vice President, Academic Affairs and Physician Engagement

Rich Keehle, MBA
Senior Director, Support Services

Blaine Olmsted
Senior Director, Supply Chain Operations

Abdul Qavi
Director, Business Intelligence

Afzhal Rehman, MD, PhD
Vice President, Cardiovascular Services & Informatics

Robert Schmidt, PharmD
Vice President, Clinical Services

Bridget Talbut, RN
Director, Clinical Services

Camille Vincent
Project Manager

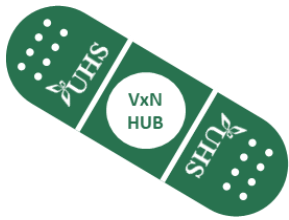
Pat Williams, MBA
Senior Director, Strategic Planning

Kathleen Wold, EdD
Director, Advanced Practice Providers

Regional Vaccination Plan | Requirements

TABLE OF CONTENTS

Table of Contents Plan Component	Pages
Mission & Purpose	3
Scope	4
Regional Demographics & Planning Assumptions	5-20
Regional Vaccination Network Partners	21-33
Health Equity Task Force	34-46
NYS Clinical Guidance & Prioritization	47
Public Education and Community Engagement	48-68
Regional Communications	69-72
Regional Concept of Operations	73
Vaccine Ordering, Distribution, Re-Distribution & Inventory Management	74
Vaccine Administration and Documentation	75
Point of Dispensing (PODs) & Vaccine Safety Monitoring	76-93
Logistics and Resource Requests	94-96
Provider Training & Education	97-103
Ongoing Provider Enrollment	104-105
Data and Surveillance	106
APPENDIX	



Mission

The Southern Tier Regional Vaccination Hub (Hub) will safely and securely store, distribute and administer the COVID-19 vaccine to essential healthcare workers, vulnerable populations and the community at-large in the Southern Tier Region through effective teamwork and collaboration with regional community partners bringing an end to the scale of the COVID-19 pandemic.

Purpose

The Southern Tier Hub Regional Vaccination Plan will serve as a guide to UHS and its community partners as we work collectively to implement the New York State COVID-19 Vaccination Program. This Plan will ensure that work is within scope and meets the requirements set forth by the New York State Department of Health.



Scope Description

As a Hub, UHS will facilitate the implementation of the NYS COVID-19 Vaccination Program by leveraging existing healthcare networks through the Care Compass Network and convening regional stakeholders as required by NYSDOH and communicating progress and barriers regularly with NYDOH and the Vaccine Command and Control Center (VC3). UHS will develop and mobilize a Regional Vaccination Plan consistent with the State's prioritization and allocation that also includes requirement elements outlined in the State's MOU.

As a Hub, UHS has primary responsibility in the 8-county Southern Tier region for identifying regional partners, communication, community education and engagement about the COVID-19 vaccine, safe dispensing, ordering, distribution, re-distribution, inventory management and tracking. The Regional Vaccination Plan must also outline how the COVID-19 vaccine will be made especially accessible to marginalized communities in the Southern Tier.

Major Deliverables

- Regional Advisory Task Force
- Stakeholder Engagement Plan
- Clinical prioritization
- Plan to ensure regional coverage
- Plan to ensure coverage to marginalized communities
- Regional training and education plan
- Public education and community engagement plan
- Communications Plan
- Regional Coordination Guidance
- Daily regional situation updates delivered to all partners
- Plans for vaccine storage, distribution and administration

Acceptance Criteria

UHS's Regional Vaccination Plan must be aligned with the NYSDOH COVID-19 Vaccination Program and approved by NYSDOH. The Regional Vaccination Plan must include requirements outlined in Part E of the MOU between UHS as a Regional Vaccine Network Hub and NYSDOH.

Project Exclusions

UHS will develop communications for regional partners under the guidance and direction of NYDOH. Out of scope for this project is communicating directly with providers or employees of other organizations. No part of this project requires communication about quantities received or destination of re-distributed vaccine and is in fact prohibited by NYSDOH unless required by law or for designated employees to implement NYSDOH directives.



Planning for Equity

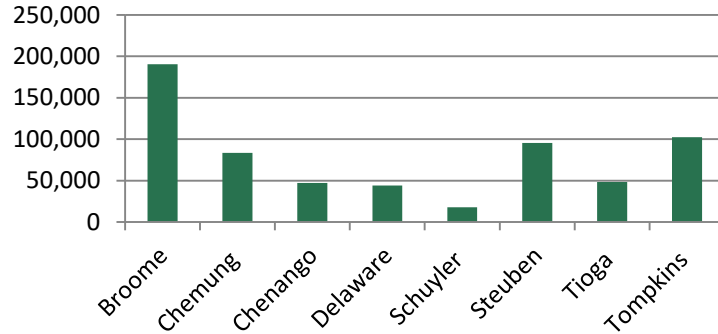
UHS used US Census Bureau, CDC, Claritas Company and other regional data to make regional planning assumptions. This data will be matched with PODs information to determine where gaps are that the Regional VxN HUB will work to address.

- High-risk populations need vaccine first
 - High population density of seniors age 65+
 - Populations with underlying co-morbidities
 - Households with low health status
 - Low socioeconomic status
- Easier to reach large numbers of people in group settings
- Potentially harder to reach:
 - Lack of broadband internet for messaging/appts
 - Low population density
 - Non-English speaking

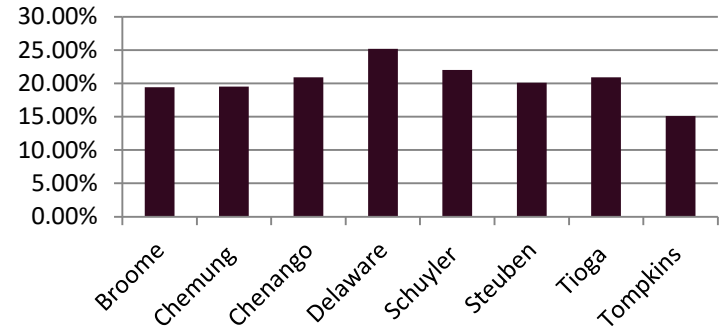


<https://www.census.gov/quickfacts/fact/table/US/PST045219>

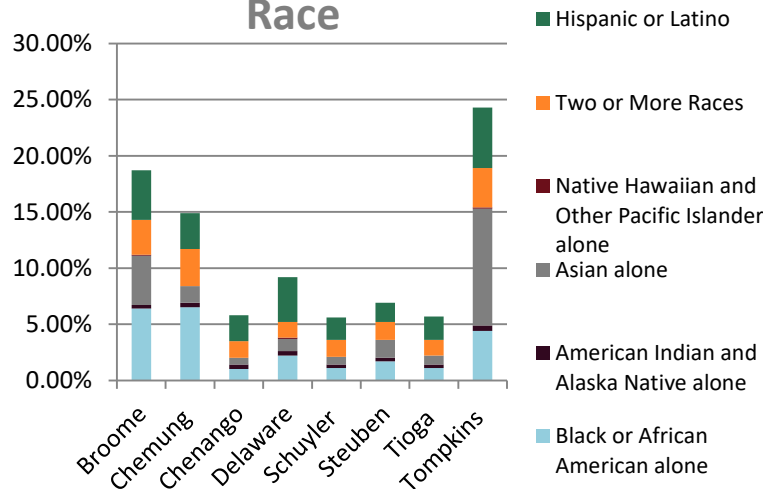
Population



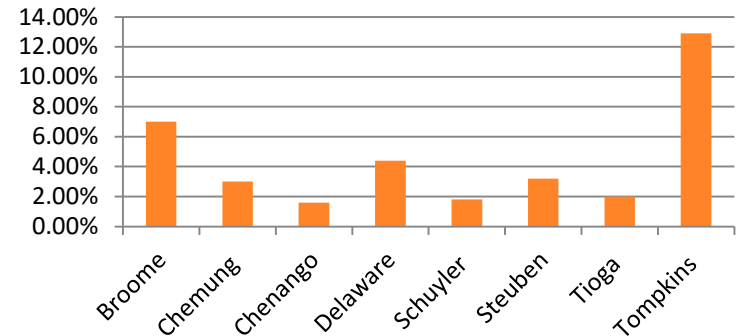
Persons Age 65+



Race



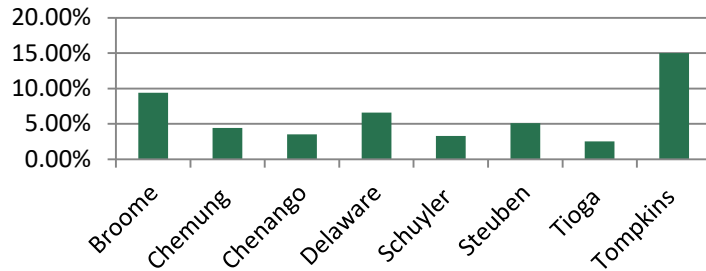
Foreign born persons



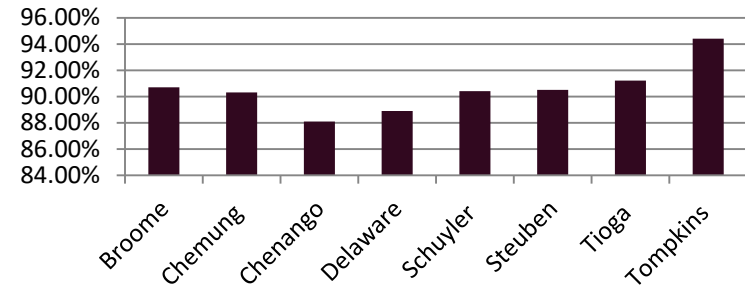


<https://www.census.gov/quickfacts/fact/table/US/PST045219>

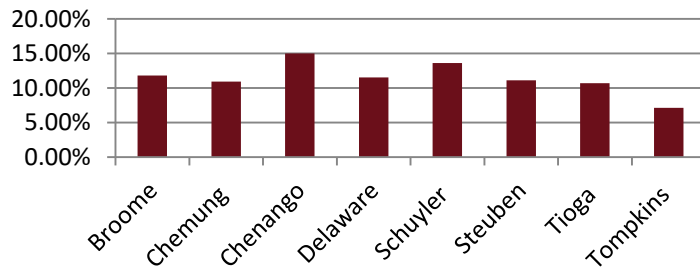
Language other than English spoken at home



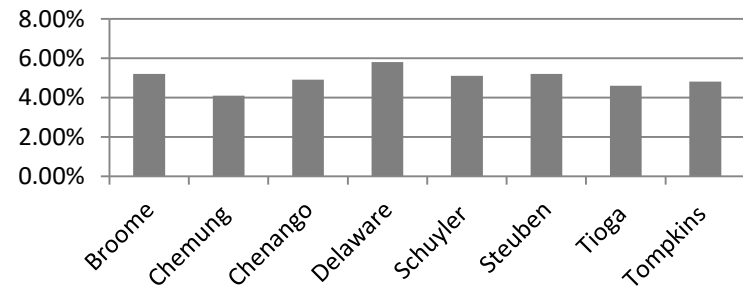
High school graduate or higher

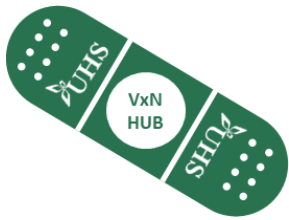


With a disability, under age 65 years



Persons without health insurance, under age 65 years





Regional Vaccination Plan | Regional Demographics

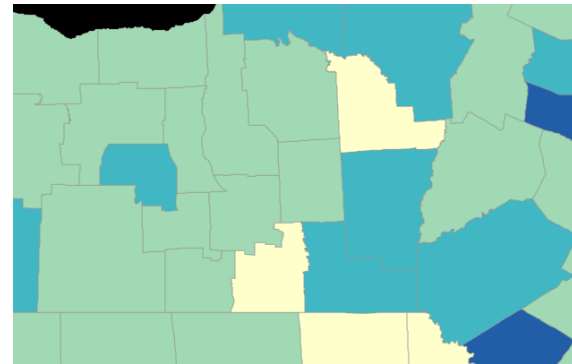
SOCIAL VULNERABILITY INDEX

The CDC's **Social Vulnerability Index** 2016 (SVI) shows a community's capacity to prepare and respond to disasters like pandemics or severe weather related events. SVI uses 15 census-driven factors that are categorized into four themes to indicate the extent that a community is socially vulnerable to hazardous events. The four themes are socioeconomic status, household composition/disability, race/ethnicity/language and housing/transportation.

Southern Tier Region's SVI Composite Scores

<https://svi.cdc.gov/map.html>

SVI Score	County	Vulnerability Level
0.1601	Tioga	Low
0.3174	Schuyler	Low to Moderate
0.3493	Tompkins	Low to Moderate
0.426	Chemung	Low to Moderate
0.4951	Steuben	Low to Moderate
0.5304	Chenango	Moderate to High
0.5689	Broome	Moderate to High
0.6705	Delaware	Moderate to High



SVI composite scores range from 0 to 1. Scores closer to 1 indicate less capacity to prepare or respond to disasters.



Regional Vaccination Plan | Regional Demographics

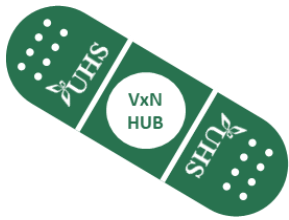
DEMOGRAPHIC HEAT MAP

The demographics in red tend to be higher risk for COVID infection, or difficulty in reaching to message or intervene. Each row is scored from **Red** to **Green**. Colors in between are more moderate than the extremes. Counties with more red may require special intervention. Where the U.S. column is red, it means that the counties demographics are better on average.

Fact	Broome	Chemung	Chenango	Delaware	Schuylar	Steuben	Tioga	Tompkins	United States
Population	190,488	83,456	47,207	44,135	17,807	95,379	48,203	102,180	328,239,523
Persons Age 65+	19.40%	19.50%	20.90%	25.20%	22.00%	20.10%	20.90%	15.10%	16.50%
Black or African American	6.40%	6.50%	1.00%	2.20%	1.10%	1.70%	1.10%	4.40%	13.40%
Asian alone	4.40%	1.50%	0.60%	1.10%	0.70%	1.60%	0.80%	10.40%	5.90%
Hispanic or Latino	4.40%	3.20%	2.30%	4.00%	2.00%	1.70%	2.10%	5.40%	18.50%
Veterans, 2015-2019	5.99%	7.18%	7.40%	7.56%	8.64%	8.38%	7.39%	3.87%	5.6%
Foreign born persons, 2015-2019	7.00%	3.00%	1.60%	4.40%	1.80%	3.20%	2.00%	12.90%	13.60%
Housing units	91,408	39,082	25,961	31,649	9,894	49,801	22,609	44,634	139,684,244
Owner-occupied housing unit rate	65.20%	68.30%	74.50%	73.90%	75.20%	72.70%	76.90%	54.90%	64.00%
Median monthly owner costs -w/ a mortgage	\$ 1,202	\$ 1,156	\$ 1,148	\$ 1,238	\$ 1,259	\$ 1,163	\$ 1,292	\$ 1,682	\$1,595
Median gross rent	\$ 776	\$ 813	\$ 678	\$ 691	\$ 742	\$ 695	\$ 751	\$ 1,164	\$1,062
Persons per household	2.33	2.36	2.28	2.25	2.42	2.37	2.40	2.25	2.62
Language other than English spoken at home	9.40%	4.40%	3.50%	6.60%	3.30%	5.10%	2.50%	15.00%	21.60%
Households with broadband Internet	81.80%	80.40%	78.10%	76.00%	78.80%	78.20%	83.30%	85.30%	82.70%
High school graduate or higher	90.70%	90.30%	88.10%	88.90%	90.40%	90.50%	91.20%	94.40%	88.00%
With a disability, age <65	11.80%	10.90%	15.00%	11.50%	13.60%	11.10%	10.70%	7.10%	8.60%
Persons without health insurance, age <65	5.20%	4.10%	4.90%	5.80%	5.10%	5.20%	4.60%	4.80%	9.50%
In civilian labor force, total, age 16 years+	57.60%	57.50%	58.80%	54.30%	58.50%	58.60%	61.10%	59.30%	63.00%
Total retail sales per capita, 2012	\$ 13,840	\$ 13,213	\$ 10,270	\$ 9,999	\$ 7,637	\$ 10,842	\$ 7,387	\$ 10,843	\$13,443
Mean travel time to work (minutes), age 16+	19.30	19.90	24.60	24.90	26.30	21.90	23.40	19.40	26.9
Per capita income in past 12 months	\$ 28,699	\$ 28,778	\$ 27,708	\$ 27,701	\$ 27,678	\$ 29,886	\$ 31,822	\$ 33,075	\$34,103
Persons in poverty, percent	17.80%	14.10%	13.70%	12.60%	15.70%	15.00%	9.40%	16.90%	10.50%



- Moderate to high zones SVI zones are more likely to be in need of the vaccine (more likely to contract the virus), and assistance in receiving the vaccine
- In all counties except Tompkins, 65+ population exceeds the national average
- The 8-county region, compared to the national average, has:
 - Less diverse/more English-speaking population
 - More veterans
 - Lower housing cost
 - Less dense housing
 - Poorer access to broadband internet service
 - Better education level
 - More disability
 - Less Health Insurance
 - Fewer citizens in the workforce
 - Higher poverty

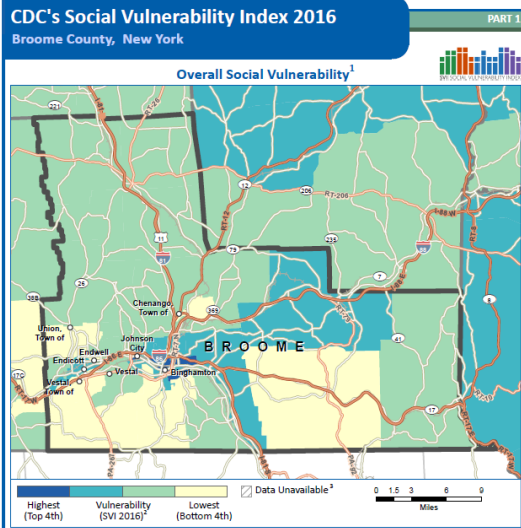


Regional Vaccination Plan | Regional Demographics

BROOME COUNTY

SOCIAL VULNERABILITY INDEX

The task force should focus efforts on reaching people living in the census tracts in high vulnerability areas. In addition, the major shopping centers should be considered for mobile vaccine distribution for all demographics.



- Broome County population is larger and more diverse than most other counties, with the highest poverty rate and moderate housing costs.
- Broome is a shopping destination for people in other counties.
- The county attracts students, with 2 colleges in its borders.

Overall, Broome County scores moderate to high vulnerability. The majority of the county has moderate to low vulnerability. High vulnerability is confined to a few census tracts:

- 135 in Endicott
- 139 in JC
- 2,5,6,7,11,12,13 in Binghamton

The vulnerability scores for these high areas range from 0.7758 to 0.9960

Socioeconomic vulnerability is highest in these census tracts.

- Median household income is lower than average, ranging from \$16,832 to \$45,161.
- Unemployment in these tracts is higher than average, ranging from 6.1% to 11.1%
- Median Home values are lower than average, and range from \$63,913 to \$96,500.

Household Composition/Disability is also high

- These areas have a high percentage of renter-occupied housing, as high as 75.8% in one of the tracts in Binghamton. They also tend to have more vacant housing units than average.

Race/Ethnicity/Language vulnerability is in the moderate range

- These concentrated areas have higher than average populations of color

Population is more transient, with shorter length of residence than average

Population density is highest here, ranging from the 58th to 86th percentile.

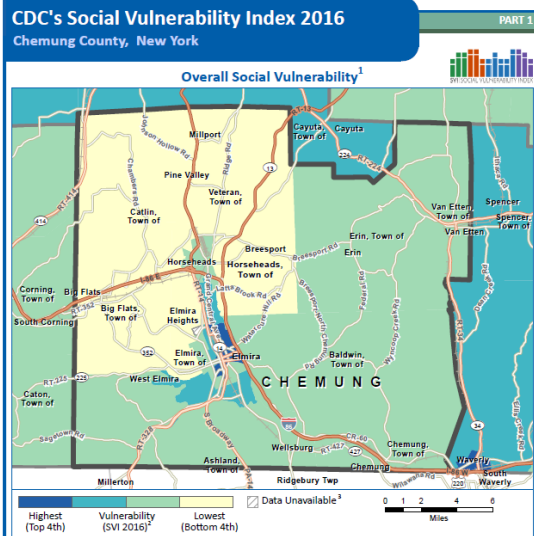


Regional Vaccination Plan | Regional Demographics

CHEMUNG COUNTY

SOCIAL VULNERABILITY INDEX

The task force should focus efforts on reaching people living in the census tracts in high vulnerability areas. In addition, the major shopping centers should be considered for mobile vaccine distribution for all demographics.



- Chemung County is moderate when it comes to population size and most other demographics. The three major population centers are the City of Elmira, and Horseheads and Big Flats, which are shopping destinations.
- The county attracts students, with 2 colleges in its borders.
- Chemung County has the highest percentage of African Americans in the 8 counties.
- The county also has the highest rate of insured persons.

Overall, Chemung County scores **low to moderate** vulnerability. There are a few census tracts with moderate to high vulnerability in the city of Elmira. High vulnerability is confined to a few census tracts in Elmira:

– 1,7,10

The vulnerability scores for these high areas are: 0.8459, 0.9788, and 0.8335, respectively.

Socioeconomic vulnerability is highest in these census tracts.

- Unemployment is higher than average in census tract 1 (8.1%) and census tract 7 (4.1%)
- Fewer than average residents are in the labor force in these tracts—49.4%, 33.7%, and 51.9% respectively.
- Median household income is lower in these areas--\$28,542, \$16,322, and \$27,687 respectively.
- Median home value is below average as well--\$67,556, \$56,250, and \$71,897 respectively.

Race/Ethnicity/Language vulnerability is in the low to moderate range

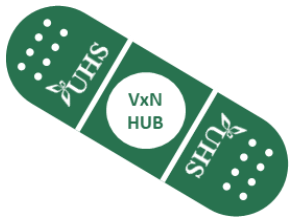
- Existing only in Elmira contiguous to these census tracts.

Household Composition/Disability vulnerability is also high

- In the entire city of Elmira and West Elmira.
- Population density is higher than average for the 8 counties in these three tracts: 46th %ile, 50th %ile, and 74th %ile respectively.

Housing/Transportation vulnerability is high in tracts 7 & 10, as well as in Horseheads

- All three tracts have a high proportion of renter-occupied housing units: 43.6%, 73.2%, and 59.5% respectively

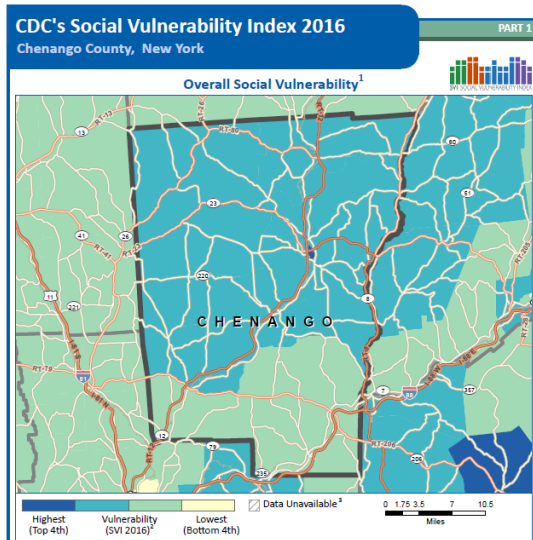


Regional Vaccination Plan | Regional Demographics

CHENANGO COUNTY

SOCIAL VULNERABILITY INDEX

The task force should focus efforts on finding ways to reach people who are far-flung in the county. This might include considering mobile vaccine distribution in one of the shopping centers along Route 12. Residents of the high vulnerability tract in Norwich will need education efforts to impact vaccine adoption rates; the hospital and other destinations within the city could be considered for vaccine distribution.



- Chenango County is a rural county with shopping destinations along the main thoroughfare, Route 12, in Norwich.
- Norwich is a former industrial hub with few employment opportunities left in the county.
- It is the 3rd smallest of the 8 counties, fairly homogeneous racially, and has the lowest rate of residents in the workforce.
- Chenango Co. has the lowest percent of households with a high school degree, and the highest rate of disability.

Chenango County overall scores **moderate** on the vulnerability scale.

The County has one small census tract, 9704, in the city of Norwich, which scores **high** Vulnerability (0.9594). From Greene northward, the county scores moderate to high vulnerability. In census tract 9704:

Socioeconomic vulnerability is high in this census tract and the northwest region of the county.

- This tract has a higher than average ratio of elderly age 85+ at 3.2%
- Median home value is below average at \$83,605
- Median household income is below average at \$40,909
- Fewer than average for the region are employed in the civilian labor force, at 55.5%

Household Composition/Disability vulnerability is high throughout the county.

- Population Density is higher than average for the 8 counties, at the 55th %ile

Race/Ethnicity/Language vulnerability is low throughout the county and in the low to moderate range in this census tract

- The Hispanic population is higher than average, at 6.4%

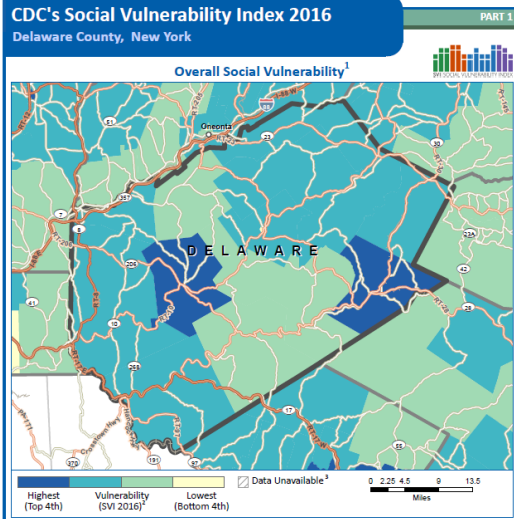
Housing/Transportation vulnerability overall is moderate, and only high in this census tract

- Renter-occupied housing is above average at 55.5%

Regional Vaccination Plan | Regional Demographics

DELAWARE COUNTY

SOCIAL VULNERABILITY INDEX



The task force should focus efforts on finding ways to reach people who are far-flung in the county. This might include considering vaccine distribution at each of the hospitals in Walton, Margaretville and Delhi. Residents of the high vulnerability tracts will need education efforts to impact vaccine adoption rates.

Delaware County overall scores moderate vulnerability, with the exception of two census tracts, one (9706) in Walton, and the other (9712) in Margaretville and the surrounding area, which score high—0.7652 and 0.8073, respectively.

Socioeconomic vulnerability is moderate throughout the county.

- Census tract 9706 experiences higher than average unemployment at 4.4%
- And fewer than average for the region are employed in the civilian labor force, at 56.0%

Household Composition/Disability vulnerability is high or moderate to high throughout the county.

- Census tract 9712 has a higher than average ratio of elderly age 65+ at 31.7% and the oldest age 85+ at 4.4%

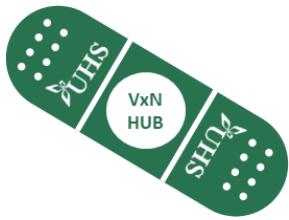
Race/Ethnicity/Language vulnerability is low throughout the county and in the low to moderate range in the 9712 census tract

- Census tract 9712 has a high proportion of Hispanic residents at 10.1%

Housing/Transportation vulnerability is high in the small population centers of Hancock, Walton, Margaretville and Delhi.

- Census tract 9706 has higher than average for the region vacant housing units (26.4%) as does 9712 at 51%.

- Delaware County is a very rural county with no large population centers. It has one college, SUNY Delhi, within its borders.
- It is the second smallest county population-wise in the region, with the highest ratio of elderly 65+, poorest access to broadband internet, and the second lowest rate in the workforce.
- They also have the least dense persons per household.



Regional Vaccination Plan | Regional Demographics

SCHUYLER COUNTY

SOCIAL VULNERABILITY INDEX

Although no real vulnerable populations exist within the county, the task force will find it difficult to reach people in this very low population density region and should focus efforts on finding ways to reach people through mobile vaccine distribution at locations such as schools and the hospital in Montour Falls.

- Overall, vulnerability index ranges **low to moderate** in Schuyler County. There are no concentrations of high vulnerability in the county, only moderate to high.

Socioeconomic vulnerability is moderate throughout the county.

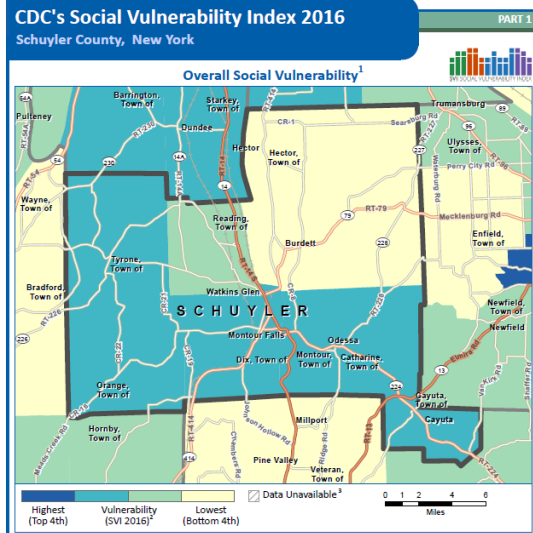
Household Composition/Disability vulnerability is high in the southern and western portions of the county.

- These census tracts (9503, 9504, and 9505) have a higher than average ratio of elderly age 65+ ranging from 20.4% to 24.0%.
- Residents have lived in the area longer than the mean, ranging from 16-19 years.

Race/Ethnicity/Language vulnerability is low throughout the county

Housing/Transportation vulnerability ranges from low to high, and is highest in the census tract of 9505.

- Population density is very low, in the 5th to 15th percentile in the 4 census tracts that make up the county.
- Renter-occupied units are also below average in these census tracts.



- Schuyler County is a racially homogeneous rural county with a tourist destination, Watkins Glen, situated at the bottom of Seneca Lake.
- Schuyler County has the smallest population in this region, with a high rate of disability, low income, and moderate to high poverty rate.
- This County has one hospital, Schuyler Hospital, within it's borders.

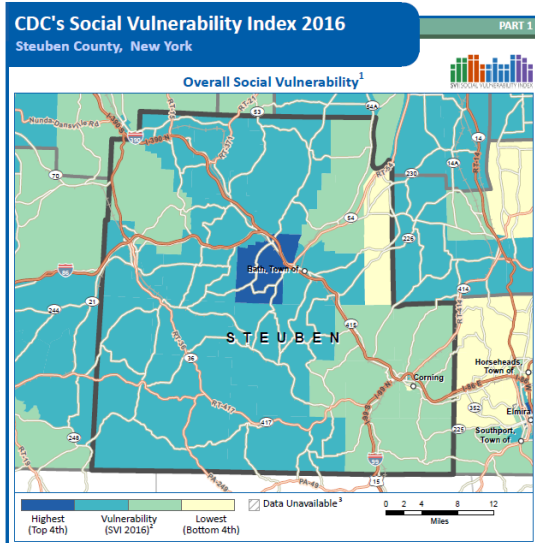


Regional Vaccination Plan | Regional Demographics

STEUBEN COUNTY

SOCIAL VULNERABILITY INDEX

There is an abundance of health care providers in the region which should make it easier to outreach to provide vaccinations. Bath is the most vulnerable population center, and special attention should be given to ameliorating transportation issues for vulnerable populations to receive vaccinations.



- The majority of Steuben County rates moderate to high on the vulnerability scale, with high vulnerability (0.8152) in census tract 9611, located in Bath.

Socioeconomic vulnerability is highest in the center of the county, from Bath to the south.

- In census tract 9611, Median home values and median household income are below average, at \$88,091 and \$45,548, respectively.

Household Composition/Disability vulnerability is high throughout most of the county.

- Residents 65 years or older are higher as a proportion (21.8%) than the average for this region. The oldest (85+) are higher than average as well, at 3.3% of the population.
- More than 11% of the population below age 65 report a disability
- In census tract 9611, only 51.4% of the population is in the labor force, lower than the norm for the region

Race/Ethnicity/Language vulnerability is low throughout the county

- The 9611 tract contains 4.1% black population (higher than average)

Housing/Transportation vulnerability ranges from low to high, and is highest in the census tract of 9611 in Bath and 9623 in Painted Post.

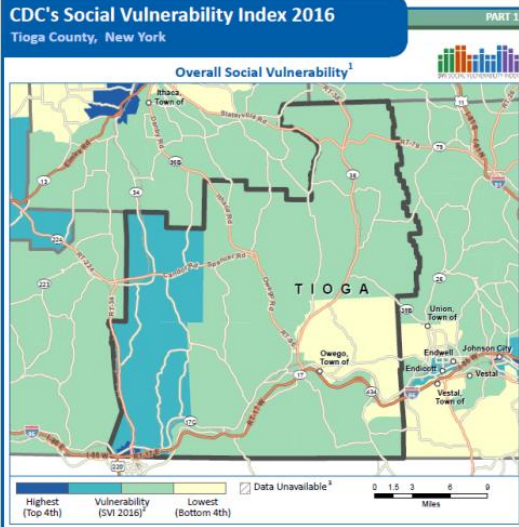
- Steuben County is the third largest population with a fairly homogeneous population racially, with a moderately high rate of poverty and lower housing costs, despite moderately high per capita income.
- The VA Medical Center is located in Bath; there are several other hospital locations in Steuben County.



Regional Vaccination Plan | Regional Demographics

TIOGA COUNTY

SOCIAL VULNERABILITY INDEX



This county has fewer hurdles to jump in providing vaccinations. There are several primary care providers in the county which should make it easier to outreach to give vaccinations. The Village of Owego should be considered as a shopping destination for the provision of mobile vaccine clinics.

- Tioga County scores **generally low to moderate** on the vulnerability index.

Socioeconomic vulnerability is generally moderate in the county.

- Indicators of wealth are strong in this county, where education and medical professionals reside.

Household Composition/Disability vulnerability is high in the western and northwestern portion of the county.

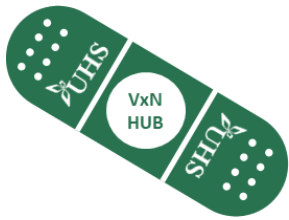
- This county is younger on average, but the population which will rise next into the elderly category (55-64) is higher than average for this census tracts.
- Nearly 11% of the population below age 65 report a disability

Race/Ethnicity/Language vulnerability is low throughout the county

Housing/Transportation vulnerability ranges from low to moderate.

- Population density ranges from a low of the 7th %ile to a high of the 55th %ile.

- Tioga County is the fifth largest of the 8 in this region.
- The county has no hospital in its borders.
- It has a fairly homogeneous racial population, highest labor force rate, and the second highest salary level with the lowest percentage of poverty.
- The Village of Owego is a boutique shopping destination.

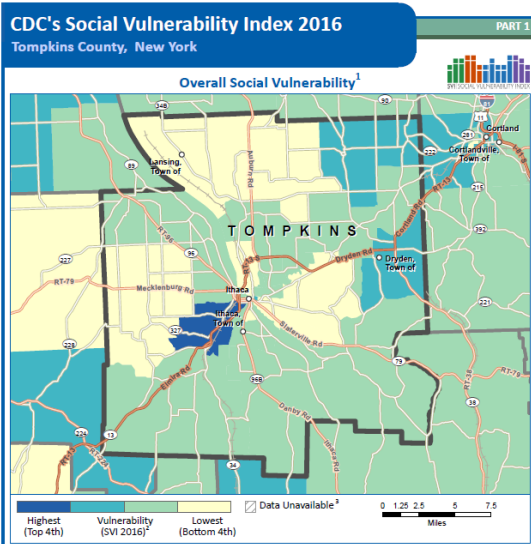


Regional Vaccination Plan | Regional Demographics

TOMPKINS COUNTY

SOCIAL VULNERABILITY INDEX

This county is well-educated and socioeconomically strong. Ithaca is the main destination in the County and should be evaluated for best locations for vaccine distribution.



- Tompkins County is the least vulnerable of the 8 counties in this region, scoring **low to moderate**, with the exception of one census tract (10 in Buttermilk Falls) which scores high on the vulnerability scale (0.8392).

Socioeconomic vulnerability is generally low to moderate in the county.

- Two census tracts in Ithaca, 3 and 12 show high vulnerability.
- Indicators of wealth are strong in this county, where education and medical professionals reside.

Household Composition/Disability vulnerability is generally low to moderate.

- Vulnerability is only high in census tract 10.
 - The proportion of residents age 65+ is higher on average at 21.1% of the population.
 - The most elderly population (85+) is also higher than the average at 3.3% of the population.

Race/Ethnicity/Language vulnerability is low to moderate throughout the county

- Black residents comprise nearly 12% of the census tract 10, higher than average.

Housing/Transportation vulnerability ranges from low to high.

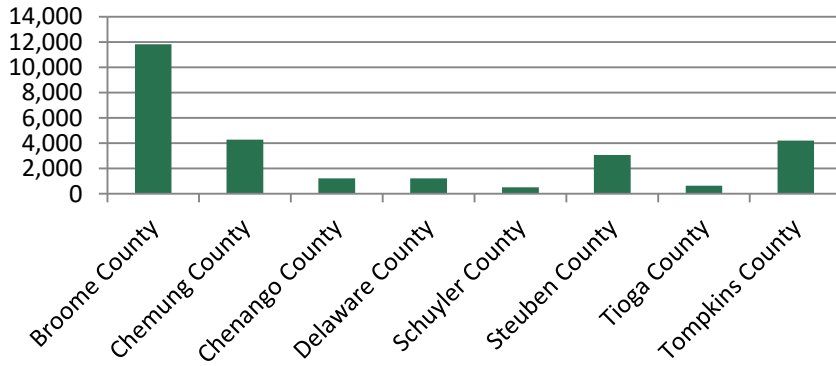
- Tompkins County has the second largest population and with an Ivy League college in its borders, Cornell University, has the highest indicators of wealth and education and the shortest commute times.
- Other colleges in the county include Ithaca College and TCCC.
- There is one hospital, Cayuga Medical Center, located in the county.

Regional Vaccination Plan | Regional Demographics

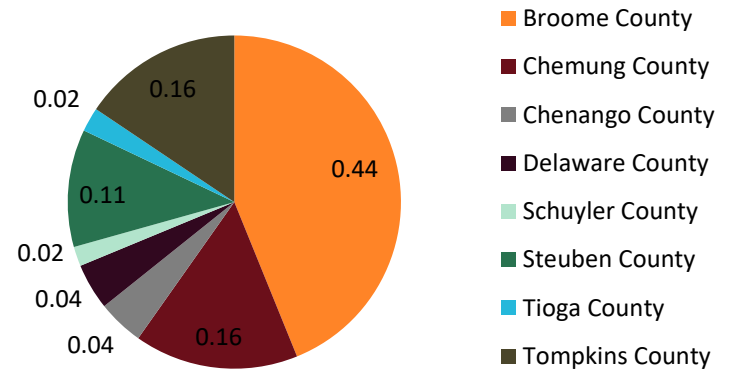
HEALTHCARE WORKERS BY COUNTY



Average Quarterly Healthcare Employment - 2020

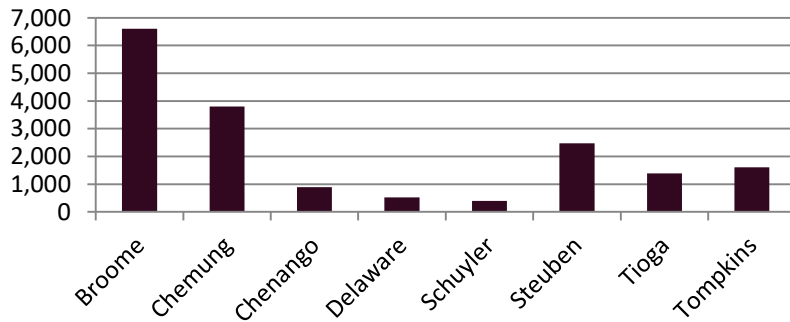


Percentage of Healthcare Workers in the Southern Tier by County

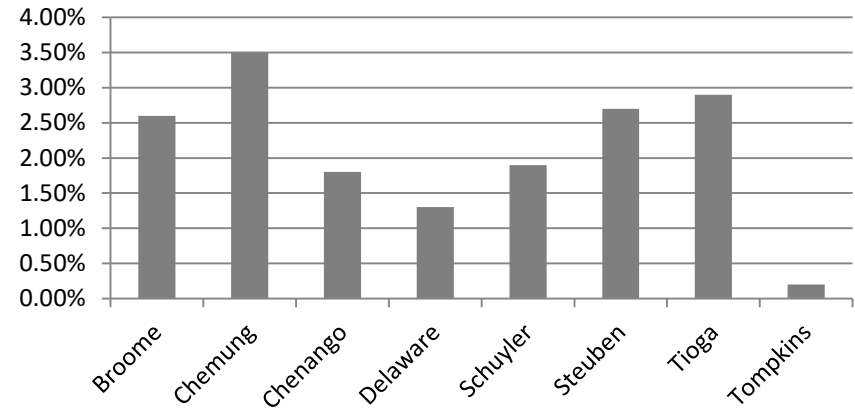




**Total Tested Positive
by County**



% Positive by County





Mission

Advise the HUB in the development of a phased Regional Vaccination Plan ensuring community needs are met.

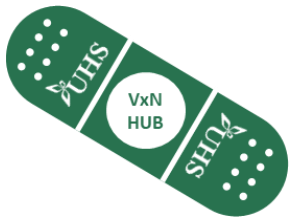
Core Members

Each Southern Tier Region Hospital CEO
Each County Executive / County Leader
Leaders of Local Health Departments
Leaders of Local Offices of Emergency Management
Care Compass Network Executive Director
Each Chamber of Commerce Leader

Additional Partners

Long Term Care Representative
Faith Based Organization Representative
Education Representative
Higher Education Representative
Community Not-for-Profit Representative
First Responders Representative
Aging Community Representative
Disability Community Representative
Diversity, Equity & Inclusion Representative

A kick-off meeting of the Core Members will take place on December 31, 2020. Partners will be actively involved in informing the Regional VxN Plan as it evolves. Other partners will be added along the way.



Regional VxN Planning Team

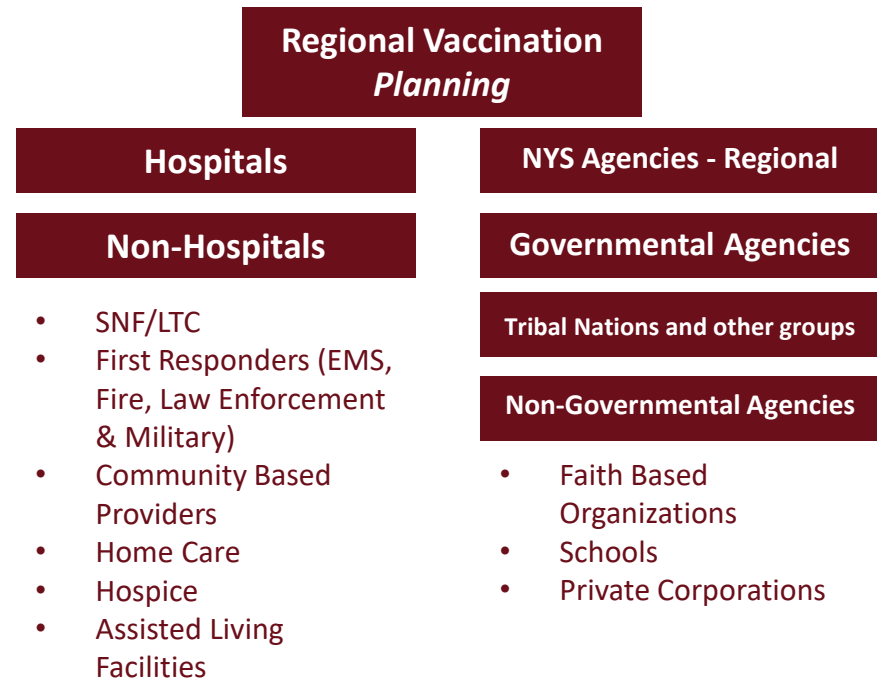
Partners serve a Planning functional role. Other teams will include Operations and Logistics.

Mission

To oversee and coordinate regional vaccination planning.

Regional Responsibilities

Coordinate and partner with all critical stakeholders to ensure safe, equitable and efficient distribution of the vaccine to all residents in the region. Partners will assist in operationalizing PODs, ensuring local coverage, supplying resources (e.g. staff, facilities) and supporting other entities in the region.





The support of County executive-level leadership in each Southern Tier Region County is necessary to authorize time and resources for the local agencies that will be part of the Regional VxN. They also know their communities well and the Regional VxN will lean on them to inform planning efforts along the way.

Jason Garnar
County Executive
Broome County

Timothy O’Hearn
Administrator
Schuyler County

Christopher Moss
County Executive
Chemung County

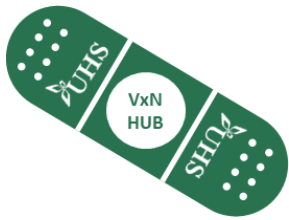
Jack Wheeler
County Manager
Steuben County

Lawrence Wilcox
Director
Chenango County

Martha Sauerbrey
Legislative Chair
Tioga County

Tina Mole
Chairman
Delaware County

Jason Molino
County Administrator
Tompkins County



Regional Vaccination Plan | **Regional VxN Partners** LOCAL GOVERNMENT – LOCAL HEALTH DEPARTMENTS

Local Health Departments (LHD) in each Southern Tier Region County will be essential to the success of the Regional VxN. They have subject matter expertise about the populations that they serve and are passionate about protecting the health of their communities. LHDs maintain vaccine POD plans that have been adapted for COVID-19. LHDs will provide resources and staffing for Regional VxN operations coordination.

Rebecca Kaufman

Director
Broome County Health Department

Deborah A. Minor, RN, MPH

Director
Schuyler County Public Health

Peter Buzzetti

Director
Chemung County Health Department

Darlene Smith

Director
Steuben County Public Health

Marcas W. Flindt

Director
Chenango County Health Department

Lisa McCafferty

Director
Tioga County Public Health Department

Amanda Walsh, MPH

Director
Delaware County Public Health
Services

Frank Kruppa

Director
Tompkins County Health Department



Regional Vaccination Plan | **Regional VxN Partners** LOCAL GOVERNMENT – EMERGENCY MANAGEMENT

Coordinating vaccine logistics is a disaster response and County Offices of Emergency Management (OEM) are designed for this purpose. Their experience in disaster planning, communication and resource management make them must-have partners in the Regional VxN. And in the Southern Tier, most OEM leaders are also fire coordinators and EMS liaisons. They will make these important connections on behalf of the Regional VxN.

Michael Ponticiello

Director
Broome County Emergency Services

William Kennedy

Coordinator
Schuyler County Emergency Services

Kristin A. Card

Deputy Director - Administrator
Chemung County Fire and Emergency
Management

Timothy Marshall

Director
Steuben County Office of Emergency Services

Matthew Beckwith

Fire Coordinator
Chenango County Bureau of Fire &
Emergency Management

Mike Simmons

Director of Emergency Services
Tioga County Office of Emergency Services

Stephen Hood

Director/Fire Coordinator
Delaware County Emergency Services

Brian Robison

Director
Tompkins County Department of Emergency
Response

Regional Vaccination Plan | Regional VxN Partners

OTHER LOCAL GOVERNMENTAL AGENCIES



Many state and local government agencies assist in serving the broad needs of their constituents. LHDs and OEMs will play a large role but we will also enlist the help of additional government offices and departments for outreach.



State Legislative Representatives



Social Services Departments



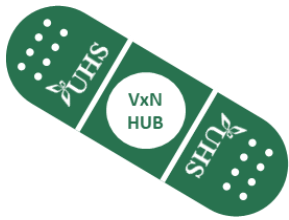
Offices for Aging



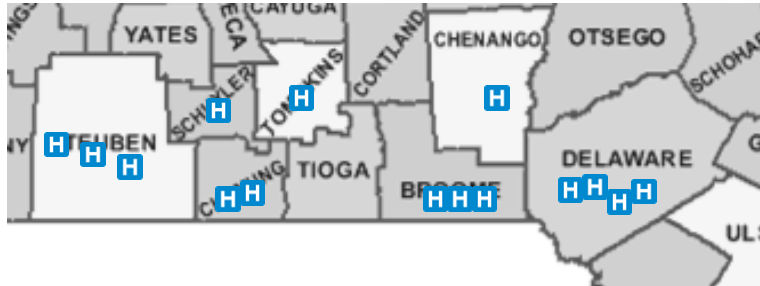
Connected to Businesses & Trades

The Southern Tier's Regional VxN will partner with the local Chambers of Commerce. They have well-established networks with community employers and trade associations and can get information out to them quickly. They can also provide the Regional VxN with knowledge on gaps in vaccine coverage in this population.



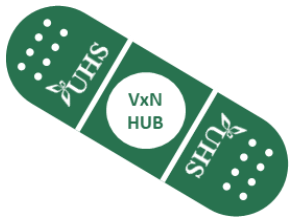


There are 15 hospitals in the Southern Tier Region



The COVID-19 pandemic has deepened hospitals' role as anchor institutions in their communities. Hospitals are trusted sources of health care and community health education. They serve everyone. This trust can be leveraged to encourage employees and community partners to engage in the vaccination effort. They will also be strong partners with LHDs and OEMs with local PODs, provide supplies, staffing and excess vaccine, and continually enrolling community based providers.

HOSPITAL	PRESIDENT / CEO
Broome	
Our Lady of Lourdes	Kathryn Connerton
UHS Binghamton General Hospital	John Carrigg
UHS Wilson Medical Center	John Carrigg
Chemung	
Arnot Ogden Medical Center	Jonathan Lawrence
St. Joseph's Hospital	Jonathan Lawrence
Chenango	
UHS Chenango Memorial Hospital	Drake Lamén, MD
Delaware	
AO Fox -- Tri Town Campus	Jeff Joyner
UHS Delaware Valley Hospital Inc.	Paul Summers
Margaretville Hospital	Mark Pohar
O'Connor Hospital	Scott Bonderoff
Schuyler	
Schuyler Hospital	Rebecca Gould
Steuben	
Corning Hospital	Paul VerValin
Ira Davenport Memorial Hospital	Elizabeth Weir
St. James Hospital	Bryan O'Donovan
Tompkins	
Cayuga Medical Center	Martin Stallone, MD



Regional Vaccination Plan | Regional VxN Partners HEALTHCARE ENTITIES – LONG TERM & POST-ACUTE CARE INDIVIDUALS WITH DISABILITIES

Roughly 20% of the Southern Tier population is 65 or over. Long term care and post acute care organizations play a very important role in the continuum of care for a lot of people. NYS has opted into the federal Pharmacy Partnership Program where select retail pharmacies will vaccinate LTC residents and staff. If needed to assist further, the Regional VxN will look to the Long Term Care Administrators of the Southern Tier to help organize outreach to ensure that vaccine information and access is reaching this population equitably. We will also continue working with home care agencies to prioritize these essential staff.

Individuals with disabilities make up a large portion of the Southern Tier population. ACHIEVE knows how to enhance quality of life for individuals with disabilities in Broome, Tioga and Chenango Counties. They have a strong network of disabilities services providers in the Southern Tier and will serve as a liaison to organizations with a similar mission.

In the Southern Tier Region



**33 Nursing
Homes**



**38 Home Care
Agencies**





Regional Vaccination Plan | Regional VxN Partners HEALTHCARE ENTITIES – COMMUNITY HEALTH CENTERS

Hundreds of community health organizations are connected to established Southern Tier health coalitions. The existing membership, structure and missions of these coalitions is a natural fit to leverage as the Regional VxN works to engage marginalized populations. The Southern Tier Regional VxN will work closely with Care Compass Network (Southern Tier PPS) and the Rural Health Network of South Central New York to engage community health centers .



The **mission of Care Compass Network (CCN)** is to improve the health and well-being of the community members in the CCN service area by supporting the development of enduring partnerships of clinical and community service providers and empowering those partnerships to flourish in a value-based payment environment.



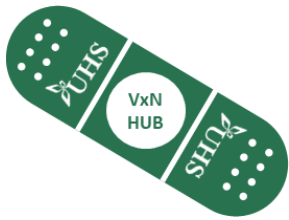
Mission and Vision: Advance the health and well-being of rural people and communities.



While the missions of each United Way vary slightly, they are all common in their focus on impacting critical community needs with collaboration. This is exactly what the Regional VxN is all about. United Ways have tremendous networks that help people in need. They are a one-stop resource in many Southern Tier communities . Each county in the region is served by a United Way. The Regional VxN will leverage their relationships and experience with many different community organizations.



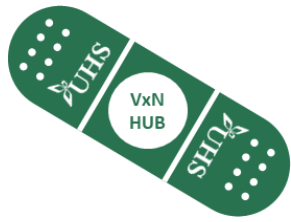
- United Way of Broome County
- Chenango United Way
- United Way of Delaware and Otego Counties
- United Way of Schuyler County
- United Way of the Southern Tier
- Tioga United Way
- United Way of Tompkins County



Faith Based Organizations often serve those in need and have additional communication networks. There are hundreds if not thousands of places to worship in the Southern Tier. The Regional VxN will use regional faith based organizations to communicate COVID-19 vaccine information out to their members and affiliated worship organizations.



Islamic Association of the Finger Lakes
Southern Tier Interfaith Coalition
Broome County Council of Churches
Family Life Network Radio
Jewish Community Center
Islamic Organization of the Southern Tier
Namgyal Monastery Institute of Buddhist Studies
Catholic Charities of Chenango County
Catholic Charities of Chemung and Schuyler County
Tioga County Rural Ministry



Regional Vaccination Plan | Regional VxN Partners SCHOOL AND HIGHER EDUCATIONAL ORGANIZATIONS

The Southern Tier has a strong BOCES system and a number of higher educational institutions.

BOCES will be able to coordinate messaging out to the schools districts in the region. UHS had success partnering with the Broome-Tioga BOCES in the summer to help school districts acquire PPE to open school. We expect strong partnerships like this to continue with BOCES' help. Higher education partnerships could include college community education and help with PODs, supplies or even staffing.



Broome-Tioga BOCES
DCMO BOCES
Greater Southern Tier BOCES
Tompkins-Seneca-Tioga BOCES



Community Colleges
SUNY Broome
SUNY Corning
Tompkins Cortland Community College



Cornell University



ELMIRA COLLEGE



Ensuring a fair and equitable vaccine distribution in New York State.

Guiding Equity Principles



- **Build trust** and acknowledge the pervasive structural racism that has contributed to **existing health and social disparities**.
- **Promote health literacy and language access** for all to benefit in order to ensure **diversity and fairness** in accessibility.
- **Implement** policy to ensure **protections of privacy and confidentiality**.
- **Identify** accessible and welcoming **community locations** across many diverse communities to conduct **outreach**.
- **Engage with community-based partners** that have **experience and a trusted presence** within all priority communities.
- **Create public service announcements** that are regionally placed, **culturally responsive and representative** of BIPOC.
- **Develop community engagement** resources for all priority communities in a **fair and diverse** manner.



**Southern Tier Regional VxN
Health Equity Task Force Ambassadors**

Micah Barreiro, President
Broome-Tioga NAACP

Patricia Fernandez deCastro
Latino Civic Association of Tompkins County

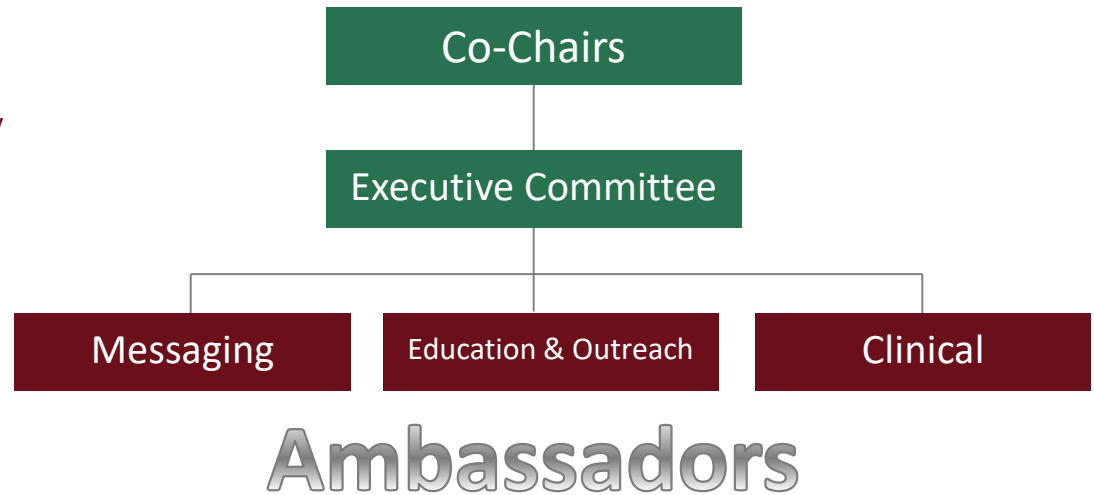
Mayra Garcia, Executive Director
American Civic Association, Inc.

Michele Johnson, CEO
YWCA Elmira & the Twin Tiers

Amy Somchanhmavong
Ithaca Asian American Association

Georgia Verdier, President
Elmira NAACP

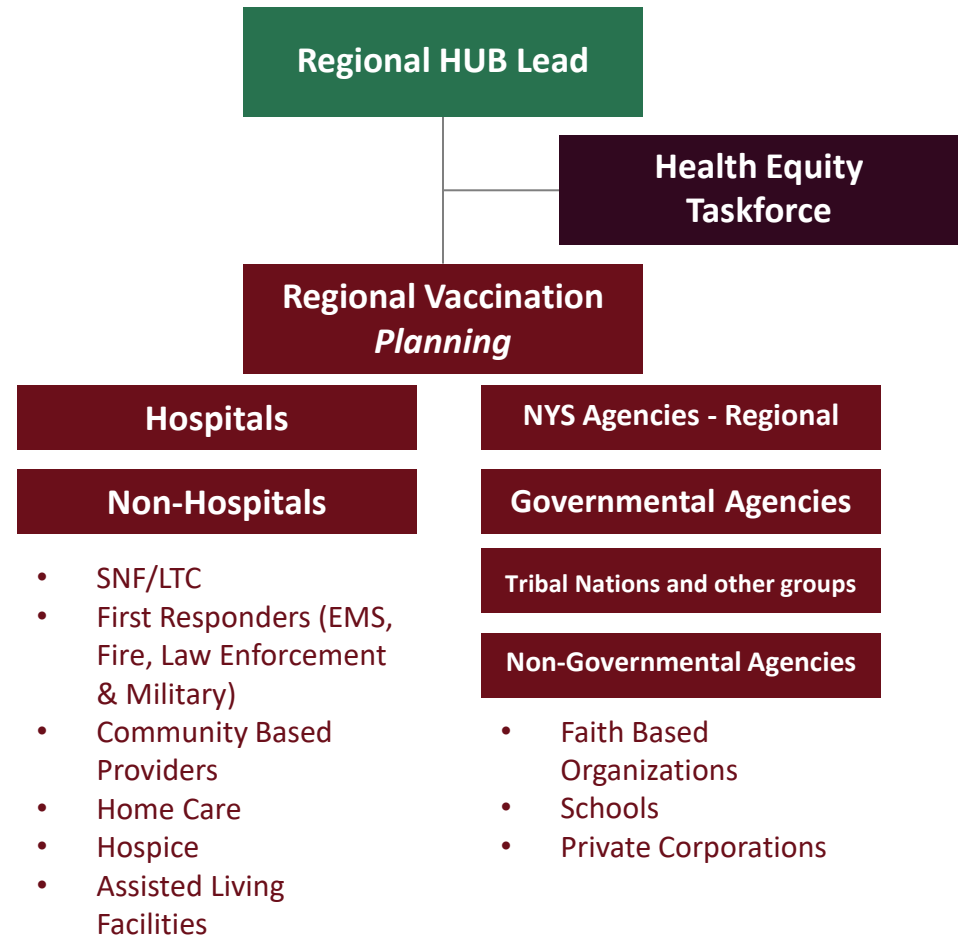
NYS Vaccine Equity Task Force

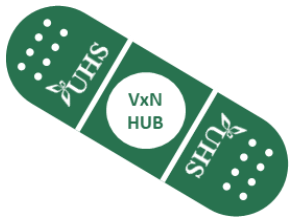




Health Equity Taskforce Mission

Advise the Southern Tier VxN HUB Lead in the development of a phased Regional Vaccination Plan ensuring community needs are met.

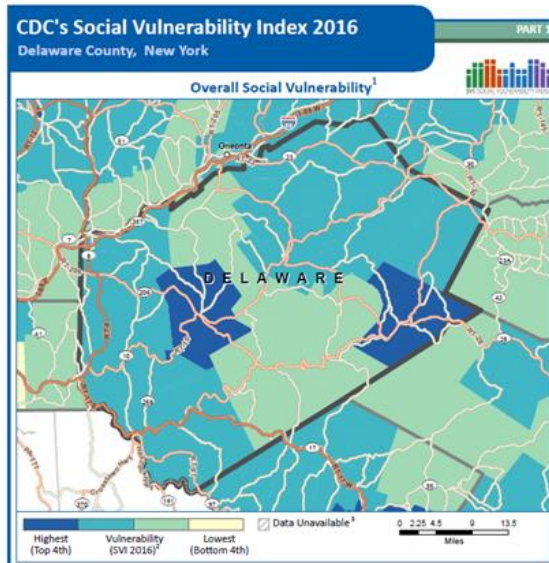


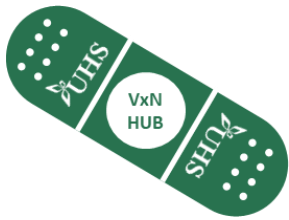


Regional Vaccination Plan | Health Equity Task Force

REGIONAL HEALTH EQUITY TASK FORCE

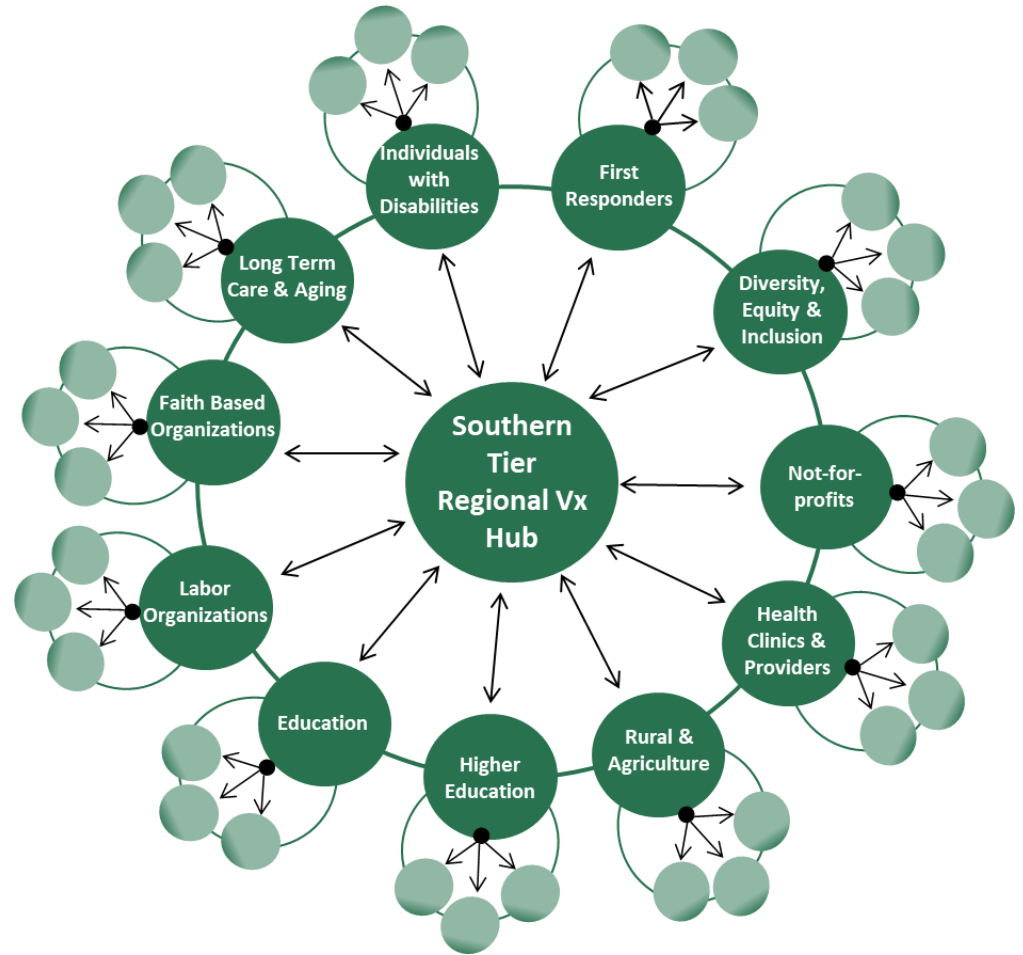
USING DATA TO DEFINE SOCIALLY VULNERABLE POPULATIONS | Socially vulnerable populations are defined using the CDC Social Vulnerability Index themes socioeconomic status, household composition/disability, race/ethnicity/language and housing/transportation. Employment status, age and density of the population were also considered. Health Equity Task Force members will use this data to develop and plan communication and outreach.





ENGAGING STAKEHOLDERS TO DEFINE PRIORITY POPULATIONS

The Southern Tier is diverse both in ethnicity and geography encompassing urban, suburban and rural areas. Health Equity Task Force members represent these areas. They have strong networks and relationships to be leveraged in communicating and providing greater access to the COVID-19 vaccine.





Regional Vaccination Plan | Health Equity Task Force

REGIONAL HEALTH EQUITY TASK FORCE

The Southern Tier Regional VxN Health Equity Taskforce will be co-chaired by Lori Welch, Executive Director of the United Way of Broome County. The United Way’s Mission, Organizational Priorities and Diversity and Inclusion Policy are strongly aligned with the Mission of the Health Equity Task Force. The United Way’s reputation as a convener and collaborator along with its experience helping people with existing health and social disparities will be a great fit for the work of the Health Equity Task Force. The Regional VxN will work with state Ambassadors to identify another co-chair in the Southern Tier Region.



United Way
of Broome County



Lori Welch, Co-Chair
Executive Director
United Way of Broome County

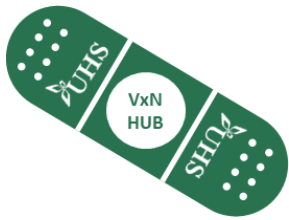
United Way Mission: To drive change that will have a positive impact on the critical needs of our community by strategically leveraging the collective resources of community partners.

Organizational Priorities Aligned with Health Equity Taskforce

- Revitalize Collaboration
- Unify Efforts and Resources

Diversity and Inclusion Policy

–“We respect, value and celebrate the unique attributes, characteristics and perspectives that make each person who they are. **We also believe that bringing diverse individuals together allows us to collectively and more effectively address the issues that face our community.** It is our aim, therefore, that our partners, strategies and investments reflect these principles.”



Regional Vaccination Plan | Health Equity Task Force

REGIONAL HEALTH EQUITY TASK FORCE

MEETING PRIORITY POPULATIONS WHERE THEY ARE | The Southern Tier Regional VxN Health Equity Taskforce **will use demographic data combined with the members' knowledge of their communities** to identify potential POD locations, targeted messaging and outreach methods to reach disparate communities and people so they know that the vaccine is safe, effective and available to them for free.

VULNERABLE POPULATIONS IN THE SOUTHERN TIER



SOCIOECONOMIC STATUS

41% of the Southern Tier population earns less than the basic cost of living.



HIGH DISABILITY VULNERABILITY

More than 1 out of 10 people under 65 report a disability in two of the eight counties.



RACIAL / ETHNIC MINORITIES*

Black, Asian and Hispanic are the most prevalent minorities. 1 out of 10 Tompkins county residents are Asian.



RURAL POPULATION

The Southern Tier has the most farms in the state and ranks 5th in total agriculture sales.



LARGE AGING POPULATION

1 out of 5 Southern Tier residents are 65+.

*American Indian, Alaska Native, Native Hawaiian / Pacific Islanders total 1% or less of the population in each Southern Tier Region county. The Region has no Tribal Nations.



STRATEGIES TO REACH SOCIOECONOMICALLY VULNERABLE

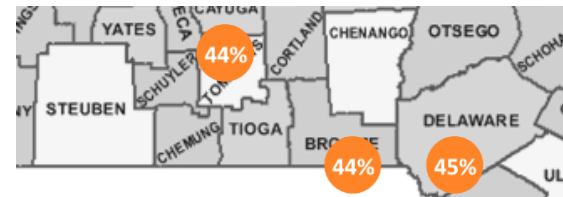
Messaging Pillars: Clear messaging that the vaccine is free to everyone.

Engage United Ways: Provide educational information to 211 and assist with staffing resources.

Facts About the Vax Forums: Develop and host webinars for county Social Services staff, United Ways, Care Compass Network partners, YMCA, YWCA.

Community Center PODs: Approach local community centers in undeserved areas to be PODs.

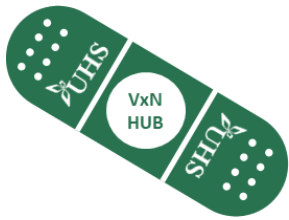
Section 8 Housing PODs: Host PODs in Section 8 housing complexes in partnership with local Housing Authority.



The percentage of Asset Limited Income Constrained Employed (ALICE) individuals and those meeting federal poverty levels in the Southern Tier ranges from 36% to 45% with the top three counties being Delaware, Broome and Tompkins. ALICE households do not make enough money to meet basic cost of living standards.

Health Equity Task Force members will assist the Hub with subject matter expertise and outreach.

- United Way of Broome County
- UHS Population Health
- Delaware County Office for the Aging
- Delaware Opportunities
- Care Compass Network DSRIP PPS
- Human Services Coalition of Tompkins County
- Reach Medical (Tompkins County)
- Chemung County Economic Security Department
- Lourdes Hospital
- UHS Family Care



STRATEGIES TO REACH RACIAL / ETHNIC MINORITIES

Messaging Pillars: Clear messaging that the vaccine is **free, effective** and available to **everyone**.

Engage Broome, Chemung, Tompkins, Delaware Community Organizations: These counties have the most diverse populations.

Facts About the Vax Forums: Develop and host webinars with NAACP, YMCA, YWCA, faith-based organizations to address mistrust in vaccines.

Develop multi-lingual outreach materials: Partner with Mothers & Babies Perinatal Network, Ithaca Asian American Association, American Civic Association, Latino Civic Association to determine language and translation needs, develop multi-lingual print materials and educational forums that can be shared widely on social media and through traditional print media.

Mitigate lack of confidence in medical science: Recruit Latinx and Black clinical staff to assist with social media messaging and educational webinars.

Section 8 Housing PODs: Host PODs in Section 8 housing complexes in partnership with local Housing Authority.



35% of Black adults remain hesitant saying they probably or definitely won't get a COVID-19 vaccine.¹

47% don't trust vaccines; 50% are concerned about getting COVID-19 from the vaccine



30% of Hispanic adults have a great deal of confidence in medical scientists.²

Health Equity Task Force members will assist the Hub with subject matter expertise, outreach and POD placement.

- Corning Community College Center for DE&I
- Office of Racial Equality & Social Unity at Corning Incorporated
- Equal Opportunity Program of Chemung & Schuyler
- Southern Tier AIDS Program
- Human Services Coalition (Tompkins)
- Mothers & Babies Perinatal Network
- Broome-Tioga NAACP
- Elmira NAACP
- American Civic Association
- Ithaca Asian American Association
- Latino Civic Association of Tompkins County
- Man to Man Forum (Chemung)

1- Liz Hamel, Ashley Kirzinger, Dec 2020. "KFF COVID-19 Vaccine Monitor: December 2020." KFF, Kaiser Family Foundation, 22 Dec. 2020. www.kff.org/coronavirus-covid-19/report/kff-covid-19-vaccine-monitor-december-2020/.

2-Funk, Cary, and Alec Tyson. "Intent to Get a COVID-19 Vaccine Rises to 60% as Confidence in Research and Development Process Increases." *Pew Research Center Science & Society*, Pew Research Center, 30 Dec. 2020, www.pewresearch.org/science/2020/12/03/intent-to-get-a-covid-19-vaccine-rises-to-60-as-confidence-in-research-and-development-process-increases/.



STRATEGIES TO REACH AGING POPULATION

Don't Wait - Vaccinate: Develop educational campaign that promotes ease and benefits of vaccination for senior populations.

Leverage Health Care Providers: Clinicians will be instrumental in encouraging 65+ population to be vaccinated. When vaccines are available, they can directly assist 65+ patients, especially those most vulnerable, during an office visit with scheduling their vaccine at a local POD or administering there if they have vaccine.

Promote a "Buddy System": Use social media messaging to encourage people with smart phones to reach out to an older family member or neighbor to offer to set up an appointment for them if they don't have virtual access to make vaccine appointments. They can go a step further by offering to take their senior Buddy to an appointment.

Host Webinars / Forums: Host Don't Wait – Vaccinate or Facts About the Vax webinars for local 211, Offices for Aging, senior centers, VFWs, American Legions, Elks Clubs, Moose Lodges or other fraternal organizations.

Host PODs at Senior Centers, Veteran or Fraternal Organizations: Approach these organizations to host PODs if retail pharmacy vaccine administration needs to be supplemented.

Monitor Pharmacy Vaccine Progress: There are 30+ Walgreens and CVS locations in the Region. If they each vaccinated 100 people per day, they would vaccinate the 65+ population of ~122,809 people in about 41 days.



62% of people ages 70+ use smartphones³

Roughly 45,000 people in the Southern Tier will have to find out about the COVID-19 vaccine another way.

Health Equity Task Force members will assist the Hub with subject matter expertise and outreach.

- Delaware County Office for Aging
- Schuyler County Office for Aging
- Tioga County Rural Ministry
- Care Compass Network
- UHS Population Health
- UHS Delaware Valley Hospital
- Long Term Care Administrators of the Southern Tier
- United Way of Broome County
- Rural Health Network of SCNY

3-Kakulla, Brittne Nelson. "2020 Tech Trends of the 50+." *AARP*, 1 Jan. 2020, www.aarp.org/research/topics/technology/info-2019/2020-technology-trends-older-americans/#:~:text=Today%2C%20smartphone%20adoption%20is%2086,smartphones%20on%20a%20daily%20basis.



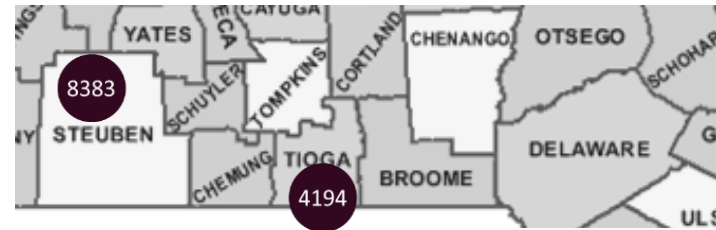
STRATEGIES TO REACH DISABLED ADULTS

Don't Wait - Vaccinate: Develop educational campaign that promotes benefits and process for vaccination scheduling for disabled adults.

Activate Population Health Resources: Hub will develop scripts and processes for outreach, registration and transportation of disabled adults. Resources will be shared with population health service providers in the network.

Network with Disability Service Organizations: Request organizations serving Steuben and Tioga counties send out provided information about vaccine availability and access to the individuals they serve.

Leverage Health Care Providers: Clinicians will be instrumental in encouraging the disabled adult population to be vaccinated. When vaccines are available, they can directly assist disabled patients during an office visit with scheduling their vaccine at a local POD or administering there if they have vaccine.



About **11% of people under age 65** in Steuben and Tioga counties **report a disability** for a total of 12,577 individuals.

Health Equity Task Force members will assist the Hub with subject matter expertise and outreach.

- ACHIEVE
- Tioga County Rural Ministry
- Corning Community College Center for Diversity, Equity & Inclusion
- Lourdes Hospital
- UHS Family Care
- UHS Population Health



STRATEGIES TO REACH RURAL POPULATIONS

Messaging Pillars: Clear messaging that the vaccine is **free, effective** and available to **everyone**.

Facts About the Vax Forums: Develop and host webinars for county Farm Bureaus, Cornell Cooperative Extensions, Rural Health Network of SCNY.

Host PODs in retail spaces common in rural communities: Walmart and Tractor Supply stores are found in many Southern Tier rural communities.

Engage Mobile Units: Lourdes Hospital has mobile medical units to be deployed that can address rural needs as identified.

Call to Action to Farmers Markets, Wineries and Breweries: Farmers Markets, wineries and breweries that collaborate with agricultural partners can assist with outreach and education by distributing printed materials and social media promotion. In some parts of the Southern Tier there are indoor farmers markets that could host PODs in parking lots. Outdoor farmers markets would be viable options when they open in the spring.



35% of rural residents remain hesitant saying they probably or definitely won't get a COVID-19 vaccine.⁴

Health Equity Task Force members will assist the Hub with subject matter expertise and outreach.

- Rural Health Network of SCNY
- Tioga County Rural Ministry
- Chenango Health Network
- Lourdes Hospital
- Chemung County Cornell Cooperative Extension

4- Liz Hamel, Ashley Kirzinger, Dec 2020. "KFF COVID-19 Vaccine Monitor: December 2020." KFF, Kaiser Family Foundation, 22 Dec. 2020, www.kff.org/coronavirus-covid-19/report/kff-covid-19-vaccine-monitor-december-2020/.



MEASURING SUCCESS & EQUITY | Successfully achieving health equity in COVID-19 vaccine administration is a primary mission of this effort but measuring success is challenging. The National Academies of Medicine and CDC’s Advisory Committee on Immunization Practices have made recommendations on vaccine equity mostly based on ethical principles which the spirit of the NYS Guiding Principles for Vaccine Equity take into consideration.



Requirements for Success and Equity

Operational, Planning and Logistical plans will each promote justice, mitigate health inequities and promote transparency. Outcomes will ultimately measure if marginalized communities’ take-up of COVID-19 have outpaced or at least met vaccine hesitation projections.

- Consider various modes and hours of POD operations (e.g. drive through, off-hours)
- Use messengers with shared backgrounds to ensure culturally appropriate communication to diverse populations
- Communicate that the vaccine is available at no cost; addresses vaccine confidence concerns of different audiences
- Accommodate rural and other hard-to-reach areas
- Build and maintain public trust by sharing decision-making processes and tracking; be clear about the level of certainty on vaccine availability

Samantha Artiga, Jennifer Kates, Dec 03, 2020. “Addressing Racial Equity in Vaccine Distribution.” *KFF*, Kaiser Family Foundation, 2 Dec. 2020, www.kff.org/racial-equity-and-health-policy/issue-brief/addressing-racial-equity-vaccine-distribution/.

“The Advisory Committee on Immunization Practices’ Ethical Principles for Allocating Initial Supplies of COVID-19 Vaccine - United States, 2020.” *Centers for Disease Control and Prevention*, Centers for Disease Control and Prevention, 26 Nov. 2020, www.cdc.gov/mmwr/volumes/69/wr/mm6947e3.htm?s_cid=mm6947e3_e&ACSTrackingID=USCDC_921-DM43026&ACSTrackingLabel=MMWR+Early+Release++Vol.+69%2C+November+23%2C+2020&deliveryName=USCDC_921-DM43026.



NYS Regional Vaccination Implementation Plan

Phases of Prioritization	Tentative Prioritization Criteria
Phase 1A	Health care personnel (HCP), EMS, funeral workers, OMH staff and residents, OASAS staff, OPWDD staff and residents, FQHC staff, and Long Term Care Facility residents
Phase 1B	Essential workers (non-HCP) Ex: Education, Food & Agriculture, Utilities, Police, Fire, Corrections Officers, Transportation Adults 75+
Phase 1C	Adults with high-risk medical conditions and Adults 65+
Phase 2	Remainder of Phase 1 Populations Critical Populations
Phase 3	General Population

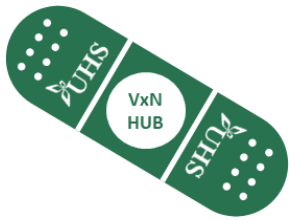


Regional Vaccination Plan | **Public Education & Community Engagement**
MESSAGING PILLARS

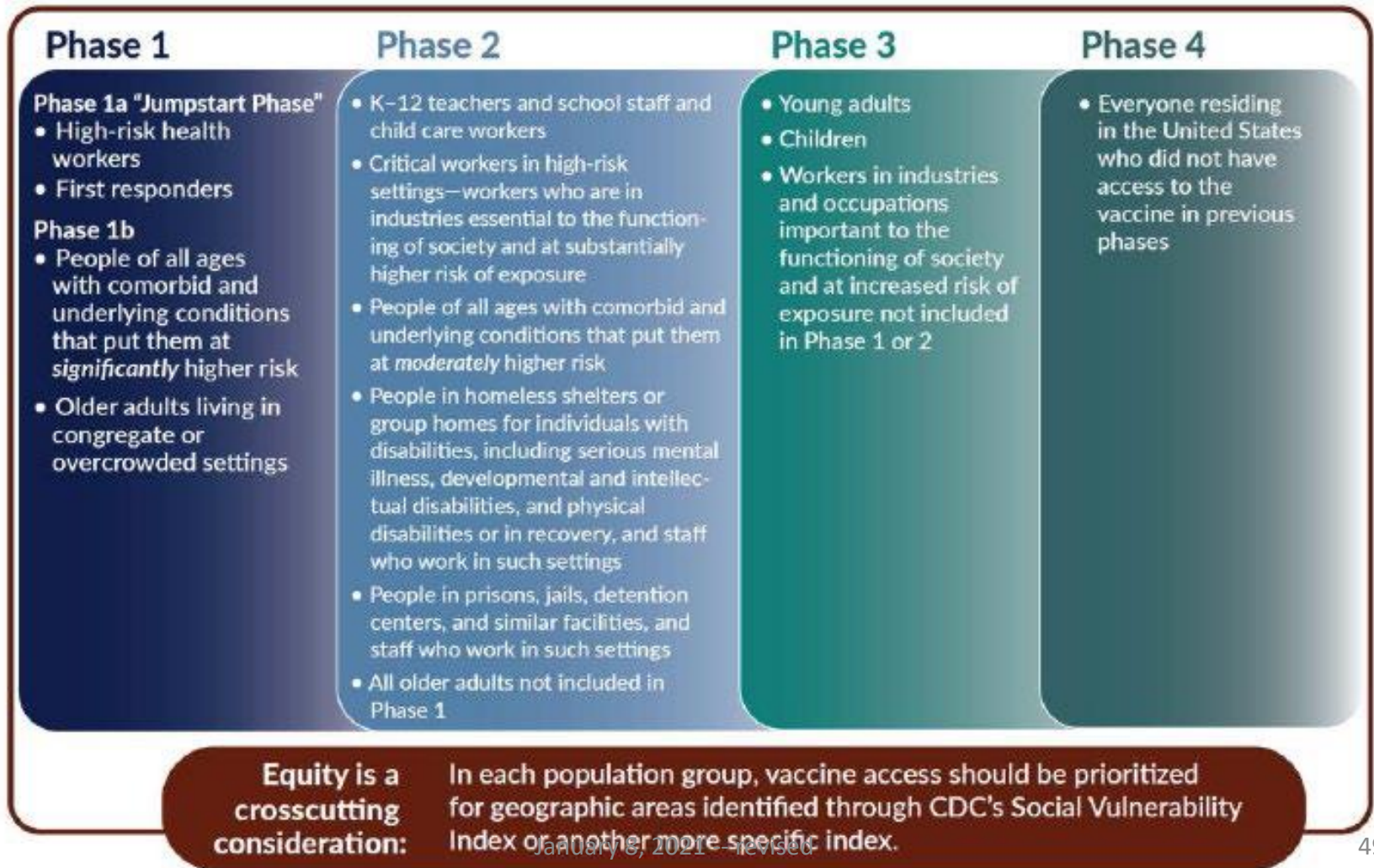
**The
vaccine is
safe.**

**The
vaccine is
effective.**

**Vaccine
distribution
will be
equitable.**



Targeting will be consistent with NYS priorities.





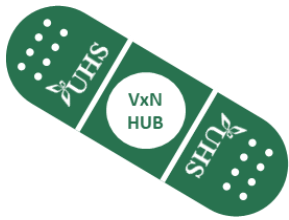
High-risk populations need vaccine first.

**High
population
density of
seniors 65+.**

**Populations
with
underlying co-
morbidity.**

**Households
with low
health status.**

**Households
with low
socioeconomic
status.**

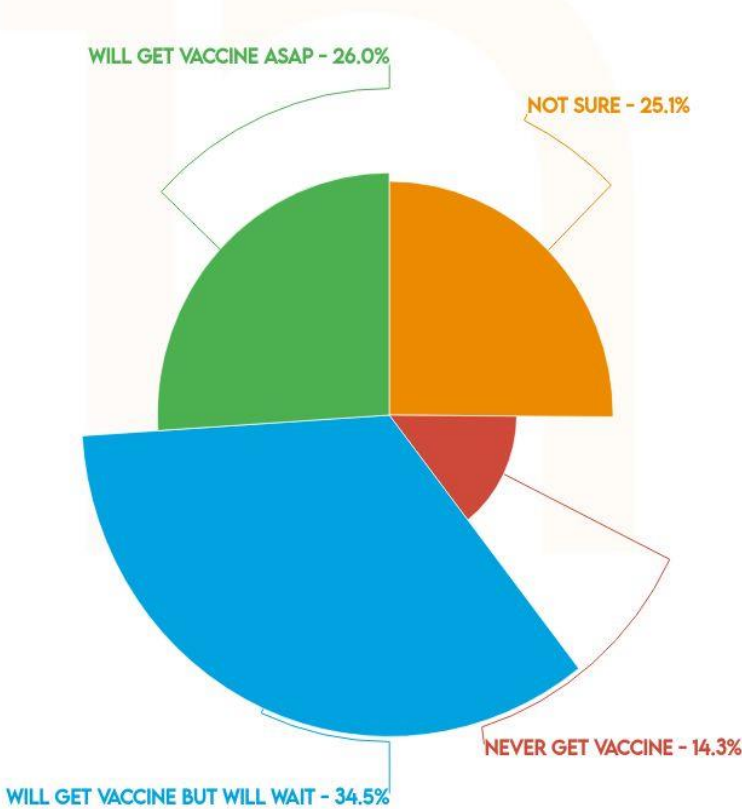


COVID VACCINATION INSIGHTS

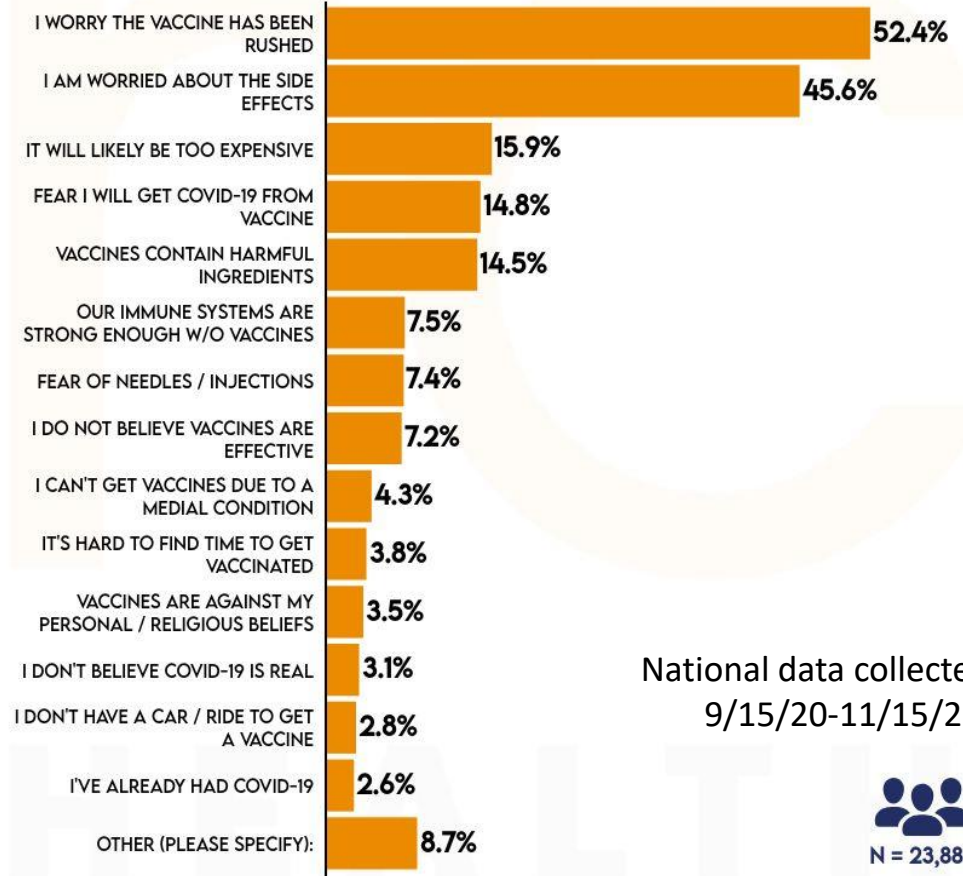
NATIONAL



HOW LIKELY ARE YOU TO GET THE COVID-19 VACCINE WHEN IT BECOMES AVAILABLE TO YOU?



WHAT CONCERNS DO YOU HAVE ABOUT THE COVID-19 VACCINATION? (SELECT ALL THAT APPLY)



National data collected
9/15/20-11/15/20.





MOST TRUSTED RESOURCE FOR COVID INFORMATION.*

-  #1 Governor's Office (50%)
-  #2 Doctor's Office
-  #3 Local Media
-  #4 Government Websites

*According to Care Compass Network (Southern Tier PPS) research.



Care Compass Network research shows the most effective way to reach community members about Care Compass Network healthcare activities

N=179

Category:	n	%
Social media	41	23%
TV advertising	36	20%
Mail	28	16%
Community events	22	12%
Radio advertising	16	9%
Print advertising	15	8%
Email	13	7%
Text messages	1	1%
Phone calls	-	-
Other (As discussed in previous response) ¹	7	4%

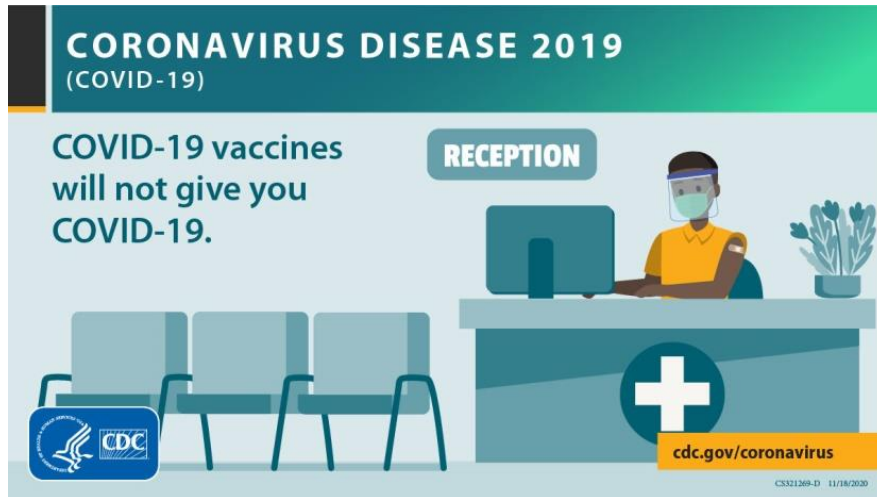
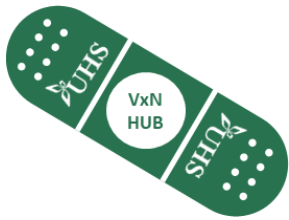


Basis for Regional Communication & Education Efforts

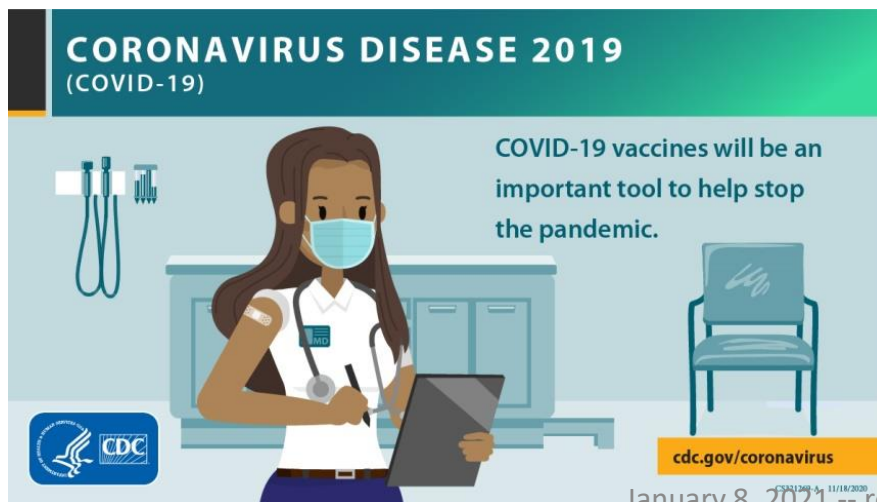


ny.gov/vaccine

The website will have constantly updated information about the vaccine, the distribution process, frequently asked questions, and more.



Additional materials will be accessed from the CDC website.





Local Health Department Coordination

- All outreach and education will be done in coordination with LHD.
- Many state and local government agencies assist in serving the broad needs of their constituents. LHDs and OEMs will play a large role but we will also enlist the very important assistance of community agencies.

Major Communication Methods & Technologies





Regional Engagement & Education Council

Objective: collaborate on message development, materials development, planning and hosting public events

- Membership would include:
 - All Hospitals Marketing Leads
 - Local Health Dept. Communications Leads
 - Representatives from local community agencies representing marginalized or difficult to reach populations (e.g. Rural Health Network, Urban League, Mother’s and Babies Perinatal Network, Faith In Action)

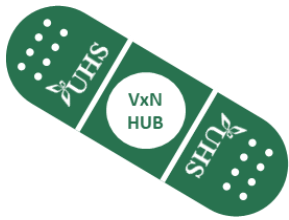


A BLEND OF TRADITIONAL & SOCIAL MEDIA

- While traditional media will be a part of our education and outreach efforts, social media is known to be very effective in reaching marginalized populations. Facebook, Twitter and Instagram will be key channels.
- Grassroots efforts will be planned to reach people without digital means of communication. We will leverage libraries and other accessible community resources to distribute vaccine information.

TARGETED VIRTUAL EDUCATION

- In addition, group virtual education sessions will be held with key groups identified by LHDs.



Southern Tier Regional VxN Hub Education & Engagement Workplan

TACTIC	Content Developed/Designed		Deploy	
	DUE	STATUS	DEPLOY DATE	STATUS
Messages on Hold for Partner Organizations <i>Focus on "Am I Eligible" website</i> Hospitals Health Departments Agencies (AOP, Meals On Wheels, Senior Centers, etc.) Schools/Universities	1/11/2021		1/11/2021	1b Messaging
UHS/CDC/NYS Posters Hospitals Health Departments Agencies (AOP, Meals On Wheels, Senior Centers, etc.) Schools/Universities	1/18/2021		1/20/2021	
Local/CDC/NYS Social Media Posts (FAQs) Facebook, Instagram, Twitter <i>Messages will be customized to reach various audiences</i>	1/8/2021		1/11/2021	1b Messaging

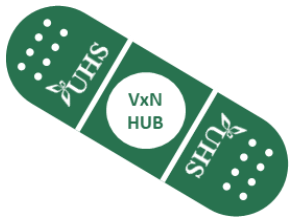
NYS developed/provided tactics will be used when available. Hub developed tactics can supplement NYS provided materials.



Southern Tier Regional VxN Hub Education & Engagement Workplan - continued

TACTIC	Content Developed/Designed		Deploy	
	DUE	STATUS	DEPLOY DATE	STATUS
Radio--UHS/CDC/NYS Messages Eight Counties <i>Media will be requested to run as PSAs where possible</i>	1/15/2021		3/1/2021	
CDC Television Spots Eight Counties <i>Media will be requested to run as PSAs where possible</i>	1/15/2021		3/1/2021	
Transit Posters Eight Counties (where available)	1/15/2021		3/1/2021	
Billboards Eight Counties	1/15/2021		3/1/2021	
Newspapers/Pennysavers Eight Counties	1/15/2021		3/1/2021	

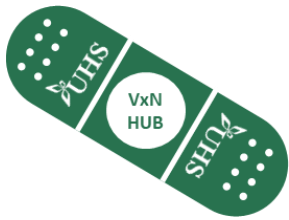
NYS developed/provided tactics will be used when available. Hub developed tactics can supplement NYS provided materials.



Southern Tier Regional VxN Hub Education & Engagement Workplan - continued

TACTIC	Content Developed/Designed		Deploy	
	DUE	STATUS	DEPLOY DATE	STATUS
Flyers (Customized by target audience) Schools Health Dept. Programs (WIC, etc.) Grocery/pharmacy/shopping bags Hospital bills Hospital meal trays Senior Centers	1/15/2021		2/15/2021	
Public Web Content (Linking to NYS & counties) <i>Provide web-links to targeted websites (faith organizations, social services, AOP, etc.)</i>	1/7/2021		1/7/2021	
Powerpoints/Content for Community Forums	12/28/2020		1/4/2021	

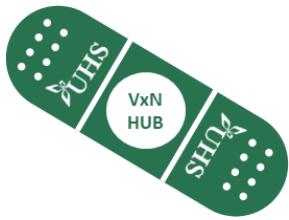
NYS developed/provided tactics will be used when available. Hub developed tactics can supplement NYS provided materials.



Southern Tier Regional VxN Hub Education & Engagement Workplan - continued

TACTIC	Content Developed/Designed		Deploy	
	DUE	STATUS	DEPLOY DATE	STATUS
Health Equity Task Force Meetings Objectives: How are we defining socially vulnerable populations and what data are we using to do so? Who have we engaged to define priority populations? Do we have the right stakeholders? What are the solutions to reach these populations that "meet them where they are"? How do we measure success and equity?	1/20/21 (kickoff)		Weekly <i>Identify locations/presenters for customized forums</i>	
Southern Tier VxN Hub Website <i>Repository for shareable materials for Partners</i>	1/4/2021		1/15/2021	
Regional Engagement & Education Council <i>Focus on ensuring materials speak to various audience to ensure vulnerable populations are met "where they are"</i>	1/18/2021		Bi-Weekly	

NYS developed/provided tactics will be used when available. Hub developed tactics can supplement NYS provided materials.

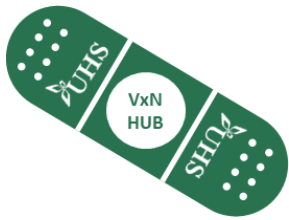


32 PODs* in Broome
*subject to change

Broome County Market

Company/Affiliate/Call Letters

Television	Quincy Media WBNG (CBS) CW Network	Nexstar Broadcasting WIVT (ABC) WBGH (NBC)	Cox Broadcasting WICZ (FOX) WBPN (My8)	Spectrum Cable (Various networks)	PBS WSKG
Radio	Townsquare WHWK, WAAL, WWYL, WNBF, 1360 Sports	iHeart Radio WMXW, WKGB, WBNW, B107.5, 96.9, FOX Sports	GM Broadcasting WLTB, The Vault	Equinox Broad. The Drive, Hot 92.9, Cool 106.7, Sunny 107.1, Solid Gold	PBS WSQX
Outdoor	Park Outdoor (static & digital boards)	Arch Digital - 1	Town of Vestal Digital	Marchuska Bros Digital - 1	
Transit/Bus Shelters	RS Transit				
Daily Newspaper	Binghamton Press & Sun				
Weekly Newspaper	Newspaper Publishers Country Courier, Vestal Town Crier, Windsor Standard		The Reporter	Deposit Courier	
College Newspaper	Binghamton University Pipe Dream				



Regional Vaccination Plan | Public Education & Community Engagement MARKETS

Chemung County Market

Company/Affiliate/Call Letters

Television	Nexstar Broadcasting WETM (NBC) WENY (ABC)	Spectrum Cable (Various networks)
Radio	7 Mountain Media WWLZ, WNKI, WNGZ, WRCE	
Outdoor	Park Outdoor (static and digital boards)	Lamar Outdoor
Transit/Bus Shelters	C-Tran Bus Advertising	
Daily Newspaper	Elmira Star Gazette	
Weekly Newspaper	Finger Lakes Community Newspapers	
College Newspaper	Campus Media (includes college radio news)	

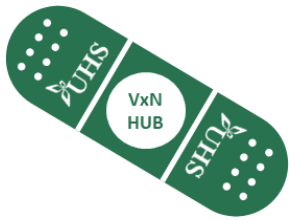
31 PODs* in Chemung
*subject to change

Chenango County Market

Company/Affiliate/Call Letters

Television	Spectrum Cable (Various Networks)	
Radio	Townsquare Media Oneonta WCHN, WKXZ, WYOZ	WCDO Radio
Outdoor	Park Outdoor (static boards)	Ray Outdoor (2 static boards)
Transit/Bus Shelters	N/A	
Daily Newspaper	The Evening Sun	
Weekly Newspaper	Norwich/Sidney Pennysaver	Sherburne News
College Newspaper	N/A	

9 PODs* in Chenango
*subject to change

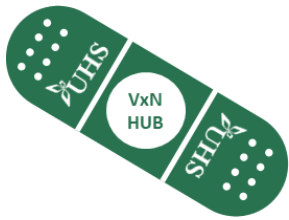


Delaware County Market

40 PODs* in Delaware
*subject to change

Company/Affiliate/Call Letters

Television	Spectrum Cable (Various Networks)		
Radio	Townsquare Media WDOZ	Bold Gold Media WSUL, Thunder, VOS-FM	
Outdoor	Park Outdoor (static boards)		
Transit/Bus Shelters	N/A		
Daily Newspaper	N/A		
Weekly Newspaper	County Shopper - Delhi Sullivan Cty Democrat	The River Reporter Hancock Herald	Walton Reporter Weekly Star
College Newspaper	N/A		



Schuyler County Market

Company/Affiliate/Call Letters

Television	Nexstar Broadcasting WETM (NBC) WENY (ABC)	Spectrum Cable (Various networks)
Radio	7 Mountain Media WWLZ, WNKI, WNGZ, WRCE	
Outdoor	Park Outdoor (static and digital boards)	Lamar Outdoor
Transit/Bus Shelters	C-Tran Bus Advertising	
Daily Newspaper	Elmira Star Gazette	
Weekly Newspaper	Finger Lakes Community Newspapers	
College Newspaper	Campus Media (includes college radio news)	

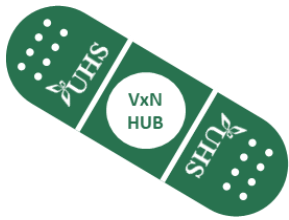
9 PODs* in Schuyler
*subject to change

Steuben County Market

Company/Affiliate/Call Letters

Television	Nexstar Broadcasting WETM (NBC) WENY (ABC)	Spectrum Cable (Various networks)
Radio	7 Mountain Media WWLZ, WNKI, WNGZ, WRCE	Tower Broadcasting WELM, WLTV, WENI
Outdoor	Park Outdoor (static and digital boards)	Lamar Outdoor (static boards)
Transit/Bus Shelters	C-Tran Bus Advertising	
Daily Newspaper	Elmira Star Gazette	
Weekly Newspaper	Finger Lakes Community Newspapers	
College Newspaper	Campus Media (includes college radio news)	

31 PODs* in Steuben
*subject to change



4 PODs* in Tioga
*subject to change

Tioga County Market

Company/Affiliate/Call Letters

Television	Quincy Media WBNG (CBS) CW Network	Nexstar Broadcasting WIVT (ABC) WBGH (NBC)	Cox Broadcasting WICZ (FOX) WBPN (My8)	Spectrum Cable (Various networks)	PBS WSKG
Radio	Townsquare WHWK, WAAL, WWYL, WNBF, 1360 Sports	iHeart Radio WMXW, WKGB, WBNW, B107.5, 96.9, FOX Sports	GM Broadcasting WLTB, The Vault	Equinox Broad. The Drive, Hot 92.9, Cool 106.7, Sunny 107.1, Solid Gold	WEBO Owego
Outdoor	Park Outdoor (static & digital boards)	Lamar Outdoor (static boards)			
Transit/Bus Shelters		N/A			
Daily Newspaper		N/A			
Weekly Newspaper		Owego Pennysaver			
College Newspaper		N/A			



16 PODs* in Tompkins
*subject to change

Tompkins County Market

Company/Affiliate/Call Letters

Television	Spectrum Cable (Various networks)	Nexstar Syracuse Mkt. WSTM (NBC) WSYR (ABC)	Granite Broadcasting WTVH (CBS)	Cox Broadcasting WSYT (Fox)	PBS WCNY
Radio	Cayuga Radio Group WIII, WHCU, WYXL, Q-Country News Talk				
Outdoor	Park Outdoor (static only)				
Transit/Bus Shelters	T-CAT Advertising				
Daily Newspaper	Ithaca Journal				
Weekly Newspaper	Ithaca Times	Finger Lakes Community Papers		The Citizen	
College Newspaper	The Ithacan	Cornell Chronicle			



Staff

Ask a Question

NYS Southern Tier Regional COVID Vaccine Hub



Regional Advisory Task Force



Regional VxN Planning Team



Health Equity Task Force



Regional Vaccination Operations



Distribution, Redistribution & Inventory Management



Vaccine Administration & Documentation



POD & Vaccine Safety Monitoring Plan



Logistics & Resource Requests



Contact Numbers/Websites



Powerpoint/Presentation/Document Library



Public Education & Community Engagement

Regional Vaccination Plan | Regional Communications PARTNER TOOLS

EDUCATION & RESOURCES

- Southern Tier Vaccination Hub will develop a secure website that will be a central repository for stakeholders to access up-to-date information including but not limited to:
 - Education (Provider, POD, CDMS, Cold Chain Storage and Handling)
 - Archive of meeting minutes, agendas, daily regional situational updates
 - POD Toolkit including:
 - Checklist of requirements to startup a POD
 - Health Commerce System and NYSIIS account creation
 - Guide to manually and electronically submit to NYSIIS
 - Resource request guide
 - Reporting requirements



WEB FORMS TO MANAGE RESOURCE AND INFORMATION REQUESTS.

A web-based tool will be available to Regional VxN partners to streamline information and resource requests. Information captured will be routed automatically to appropriate recipients.

- Resource requests
- Daily volume of vaccinations administered
- Daily reporting of inventory and green/yellow/red status
- Vaccine redistribution or recovery needs



EMAIL ADDRESS & GROUPS FOR PUSH COMMUNICATION.

- A regional email address will be used as an additional avenue for communication and ease of access for resource requests.
- The Hub will develop email groups to send pertinent information to stakeholders.



- Meeting cadences will be established including but not limited to:
 - Hub and Liaison Updates
 - Health Equity Taskforce
 - Regional Engagement & Education Council
 - Vaccine Operations Team
 - Vaccine Planning Team
 - Vaccine Logistics Team
- All planning meetings will take place via video teleconferencing to ensure social distancing guidelines.
- After the adjournment of meetings, a summary of key points will be sent to all meeting invitees via email utilizing a “Two Things” template. This document will serve to reiterate the important takeaway points from each meeting.



Mission: To oversee and ensure that the tactical objective related to regional vaccine administration are met.

Regional Vaccination Operations

PODS

- Training
- Staffing

Commercial Pharmacies

- Aligned communication

Mass Vx Sites

- Aligned communication

Regional Responsibilities:

- Coordinate POD geographical locations and oversee operations across sites
- Ensure staffing resources are adequate at the vaccine administration site
- Provide resources for vaccine-specific training and ensure appropriate vaccine clinical information is distributed; include additional licensed professionals as permitted by NYS
- Coordinate with commercial pharmacies to ensure that identified priority groups have been served
- Engage Medical Reserve Corps where available



Mission: Provide support and serve as a resource to support the ordering, distribution, re-distribution, and inventory management of vaccine.

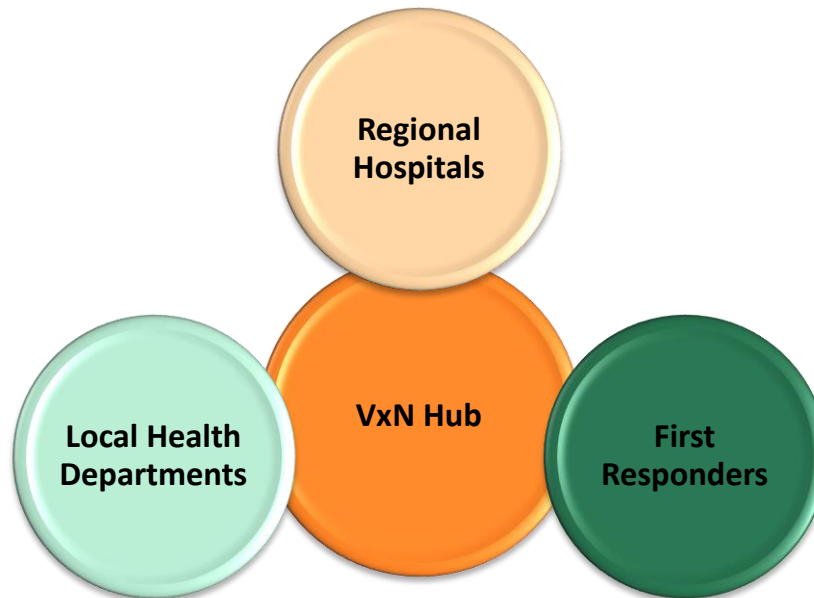
Plan:

- Provide training & support using CDC / NYS DOH resources
- Create a communication process to support the re-distribution of vaccine when necessary to the 172 enrolled COVID-19 vaccine providers in the Southern Tier Region
- Monitor vaccine inventory across region
- Manage vaccine recovery program for dispensing partners
- Support for Long-Term Care Facilities for ongoing vaccine administration
- Partner with Regional Hospital Pharmacy Leaders and Retail Pharmacies



Role:

- Work with regional partners to provide staffing resources for vaccine administration
- Provide educational support for documentation of administration in NYSIIS



Regional Vaccination Plan | Points of Distribution POD LOCATIONS & REQUIREMENTS



The Southern Tier Regional Vaccination Plan has identified 172 POD locations throughout the 8 County Region, which include:

- Broome: 32
- Chemung: 31
- Chenango: 9
- Delaware: 40
- Schuyler: 9
- Steuben: 31
- Tioga: 4
- Tompkins: 16
- Additionally, Mobile vaccination sites will be mobilized partnership with Lourdes Hospital and will be deployed to populations living in rural areas, underserved populations and minority groups.

POD REQUIREMENTS

- POD sponsors meet NYS COVID-19 Vaccine Equity Task Force Facility Recommendations.
- PODs will be stood up based on health equity demographic data in congruence with NYS phased vaccine administration and vaccine availability allotment.
- POD sponsors will adapt POD locations and operations to meet both small groups and mass vaccination needs.

Please see Appendix for specific locations and affiliations of PODs.



Regional Network and POD Operations

- **Weeks 1-3:** December 14 - January 3:
 - Priority Group 1A were provided vaccinations at Hospitals and FQHC's
- **Week 4:** January 4 – January 10
 - Priority Group 1A were provided vaccinations at Hospitals and FQHC's
 - Local Health Department PODs were established to vaccinate Priority 1A
- **Week 5:** January 11 - January 17
 - Priority Group 1A and 1B will be provided vaccinations at Hospitals, FQHC's, and Local Health Departments
- **Week 6:** January 18 - January 24 & the weeks following:
 - Priority Group 1A and 1B will be provided vaccinations at Hospitals, FQHC's, and Local Health Departments
 - Additional locations will be established that can provide vaccines for both Priority Groups (1A, 1B, 1C, & 2) and the Generalized Population (3) and will be established based on the following:
 - NYS Priority Groupings
 - Vaccine Allotment
 - Health Equity
 - Staffing Resources
- The Southern Tier Regional Vaccination Plan will encompass private, retail pharmacies and community providers. This provider directory will be completed by January 25, 2021 (subject to change).

The Southern Tier Regional VxN Hub has specific and detailed county-level POD Plans for each county. These Plans will be used as a framework to stand up POD operations as directed by New York State Vaccine guidelines.

Regional Vaccination Plan | Points of Distribution

PHASED VACCINE DISTRIBUTION



PODS	Broome	Chemung	Chenango	Delaware	Schuyler	Steuben	Tioga	Tompkins	TOTALS
	32	31	9	40	9	31	4	16	172
Phase 1A									
Healthcare Workers Only	11,830	4,295	1,209	1,212	512	3,080	633	4,203	26,974
Phase 1B									
Adults 75+	17602	7934	5212	7460	2600	9953	8407	6593	65761
Phase 1C									
Adults 65-74	20968	10239	7486	9603	3995	13646	10242	10122	86301
High risk medical/disabled	19937	8600	7723	7583	3510	10885	8064	7031	73334
Total Phase 1C by County	40905	18839	15209	17186	7505	24531	18306	17153	159635
Phase 2 Critical Populations Ages 15-64									
Black / African American	10813	5129	515	1451	284	1667	829	4357	25045
Asian	7434	1184	309	725	181	1569	603	10299	22304
Hispanic/Latino	7,434	2,525	1,184	2,638	516	1,667	1,583	5,348	22,894
American Indian / Alaskan Native	507	316	206	264	77	294	226	495	2385
Total Phase 2 by County	26189	9153	2214	5077	1058	5197	3241	20499	72628
Phase 3 General Population									
Total Pop 15-64	130389	60729	38789	48876	19216	74460	56719	82315	511493
MINUS Phase 2	104200	51576	36575	43799	18158	69263	53478	61816	438865
MINUS Phase 1A HCW	92370	47281	35366	42587	17646	66183	52845	57613	411891
MINUS High Risk / Disabled	72433	38681	27643	35004	14135	55298	44781	50582	338557
Total Phase 3 by County	72433	38681	27643	35004	14135	55298	44781	50582	338557
Grand Total per County	168959	78902	51487	65939	25811	98059	75368	99030	663555

Assumptions:

This data does not account for duplication in certain areas.

Healthcare Workers Only data is from NYSDOL average quarterly for 2020

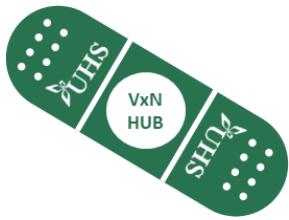
Healthcare workers age 65+ will be duplicated in Phase 1C.

High risk /disabled in Phase 1C will be duplicated due to age status and critical population status.

Vaccines are not available to anyone under 16 – 15 year olds are included in the data although they are ineligible.

Phase 2 Critical Population data is based on percentages and not raw numbers. As that data becomes available, projections will be updated.

Phase 3 ages 15-64 will include some 1B essential workers. We don't have that data but understand total 1B is close to 101K.



Regional Vaccination Plan | Points of Distribution

PHASED VACCINE DISTRIBUTION

Southern Tier Regional Vaccine Plan will stand up the following # of PODS for each county in the region in relation to Priority Groups:

	Chemung	Chenango	Delaware	Schuyler	Steuben	Tioga	Tompkins
1A							
Broome	Chemung	Chenango	Delaware	Schuyler	Steuben	Tioga	Tompkins
6	3	2	4	3	4	2 (1 mobile)	1
1B							
Broome	Chemung	Chenango	Delaware	Schuyler	Steuben	Tioga	Tompkins
10 (2 mobile)	8	5 (2 mobile)	6	3	8	6 (2 mobile)	4
1C							
Broome	Chemung	Chenango	Delaware	Schuyler	Steuben	Tioga	Tompkins
12 (2 mobile)	11	6 (2 mobile)	8	5 (2 mobile)	11	7 (3 mobile)	9
2							
Broome	Chemung	Chenango	Delaware	Schuyler	Steuben	Tioga	Tompkins
16 (3 mobile mobile)	13 (1 mobile)	7 (3 mobile)	10 (2 mobile)	6 (1 mobile)	14 (2 mobile)	8 (4 mobile)	14 (2)
3							
Broome	Chemung	Chenango	Delaware	Schuyler	Steuben	Tioga	Tompkins
18 (3 mobile mobile)	15 (2 mobile)	9 (2 mobile)	12 (2 mobile)	7 (1 mobile)	16 (2 mobile)	12 (6 mobile)	16 (2)

Southern Tier population data is the basis for POD numbers and locations.

Mobile unites will be deployed relative to health equity demographic data.

LHD will assist Hub with transportation to PODs for populations with transportation barriers.



EARLY WINS & BEST PRACTICES

A strong collaboration between Tompkins County Health Department and Cayuga Medical Center resulted in **completing 2,172 vaccinations over 5 days.**



SHARING RESOURCES

- Cayuga Medical Center staff administers vaccines to the 1A and 1B priority groups at the Tompkins County Health Department POD.
- Cayuga Medical Center staff also helps by storing the LHD's ordered vaccine.
- Tompkins County Health Department provides vaccinating staff and data entry staff.



Regional Network and POD Operations

- POD hours of operation will be based on the population needs and vaccine allotment
- PODs will stand up in a Closed capacity until NYS provides guidance on vaccinating the general population, at which time PODs will stand up in an Open capacity
- Mobilization and standing up of POD's will occur 24 to 36 hours from the time vaccine is available
- Vaccine Safety Monitoring will follow established procedures set forth by CDC including:
 - Temperature monitoring and controls
 - 24/7 logging of temperature: Date/Time/Sign off
 - Stored in secure and sanitary environment
 - Appropriate PPE for those handling the vaccine
 - Proper medical education and monitoring after vaccine administration
 - VSAFE application that will allow entry of any symptom after vaccination
- Vaccine Security will follow the established safety procedures set forth by CDC including:
 - Secure transport of vaccine
 - Collaboration with State and Local Police agencies
 - Security present during POD operations



Objective: Provide a coordinated Vaccination Hub for the Southern Tier region to safely and securely store and dispense COVID-19 vaccine to the following populations:

Phase 1a	Health care personnel (HCP), Residents and staff at nursing homes and other congregate care facilities, FQHC staff, EMS, funeral workers, Staff and residents at OPWDD, OMH and OASAS facilities, Urgent Care providers, Individuals administering COVID-19 vaccines, including local health department staff, Outpatient front-line staff, Front-line high risk public health workers with direct contact with patients
Phase 1b	Teachers and education workers, First responders, Public safety workers, Public transit workers, People 75 and older
Phase 1c	Adults with high-risk medical conditions and Adults 65+
Phase 2	Remainder of Phase 1 Populations and Critical Care Populations
Phase 3	General Population

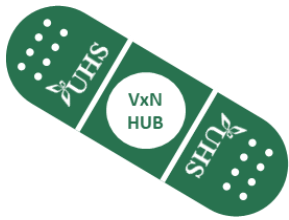
Key Stakeholders:

- New York State Health Department
- New York State Governor’s Office
- County Government
- County Health Department
- County Emergency Management
- Health Care Organizations
- Law Enforcement

Regional Vaccination Plan | Point of Distribution

Prioritization POD Location & Logistical Plan

Phase 1a, 1b

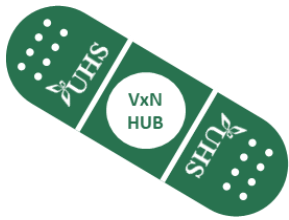


Phase 1a	Health care personnel (HCP), EMS, funeral workers, OMH staff and residents, OASAS staff, OPWDD staff and residents, FQHC staff, and Long Term Care Facility residents
	<ul style="list-style-type: none"> • Hospitals
	<ul style="list-style-type: none"> • FQHC
	<ul style="list-style-type: none"> • OMH Psychiatric Centers & Hospitals
Phase 1b	Vaccination POD's for essential workers (Non-HCP) Ex: Education, Food & Agriculture, Utilities, Police, Fire, Correction Officers, Transportation, adults 75+, will take place at the following locations (see County Plans for more specific details):
	<ul style="list-style-type: none"> • Schools
	<ul style="list-style-type: none"> • County Public Safety Buildings
	<ul style="list-style-type: none"> • Department of Public Works Buildings
	<ul style="list-style-type: none"> • Utility Companies

Regional Vaccination Plan | Point of Distribution

Prioritization POD Location & Logistical Plan

Phase 1c & Phase 2



Phase 1c	Vaccination POD's for Adults with high-risk medical conditions and Adults 65+ will take place at the following (see County Plans for specific details):
	<ul style="list-style-type: none"> • County Mobile Units
	<ul style="list-style-type: none"> • Schools
	<ul style="list-style-type: none"> • Senior Centers
Phase 2	Vaccination POD's for the remainder of Phase 1 Population and Critical Populations will take place at the following locations (see County Plans for more specific details):
	<ul style="list-style-type: none"> • Health care personnel (HCP) – Hospitals & Physician Practice Site Locations
	<ul style="list-style-type: none"> • EMS – County Public Safety Buildings
	<ul style="list-style-type: none"> • Long Term Facility Residents – Mobile Vaccination sites deployed to each Nursing Home in the region
	<ul style="list-style-type: none"> • Critical population as defined by health equity demographic data <ul style="list-style-type: none"> • County Mobile Units • Schools • POD's (as indicated in County Specific Plan and determined by Health Equity Task Force) • Public Event Forums & Drive Thru's

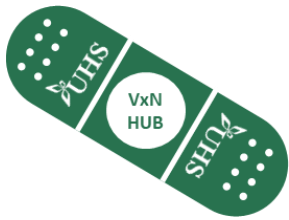
Regional Vaccination Plan | Point of Distribution

Prioritization POD Location & Logistical Plan

Phase 3



Phase 3	Vaccination POD's for General Population will take place at the following locations:
	<ul style="list-style-type: none">• Public Event Forums & Drive-Thru's
	<ul style="list-style-type: none">• County Mobile Sites
	<ul style="list-style-type: none">• (County POD Plans include specific details)



Regional Vaccination Plan | Vaccine Safety Monitoring

Vaccine POD and Safety Monitoring Plan

Broome County

Broome County	
1.	County Health Department Point of Contact – Rebecca Kaufman, Michael E. Bender
2.	County Office of Emergency Management Contact – Michael Ponticiello
3.	Refer to county POD plan for specific instructions on locations. Locations include: Hospitals, Local Health Departments, FQHC's, Assisted Living Facilities, Schools, Faith Based Organizations, Large Forums (Maines Veteran Memorial Arena and Binghamton University)
4.	Staffing – Limited, however accomplished with MOU's with groups within the community including Binghamton University and Health Department staff. Additional requests will come through NY Responds in addition to partnerships with local Hospitals

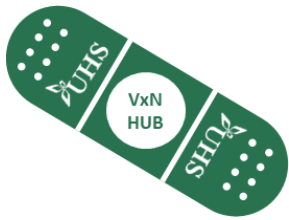
Appendix includes specific locations of each county POD.



Regional Vaccination Plan | Vaccine Safety Monitoring Vaccine POD and Safety Monitoring Plan Chemung County

Chemung County	
1.	County Health Department Point of Contact – Peter Buzzetti III
2.	County Office of Emergency Management Contact – Vinnie Azzarelli
3.	Refer to county POD plan for specific instructions on locations. Locations include: Hospital, Community Services, Schools, Assisted Living Facilities, Large Forum (Chemung County Fairgrounds), Faith Based Organizations
4.	Staffing – Health Department personnel, county employees, Medial Reserve Corps, and community volunteers. Public Health Director is reallocating resources from other county departments in addition to hiring 6 full time temporary staff.

Appendix includes specific locations of each county POD.



Regional Vaccination Plan | Vaccine Safety Monitoring

Vaccine POD and Safety Monitoring Plan

Chenango County

Chenango County	
1.	County Health Department Point of Contact – Ellen Cohen
2.	County Office of Emergency Management Contact – Matt Beckwith
3.	Refer to county POD plan for specific instructions on locations. Locations include: Hospital, Public Health Facility, Assisted Living Facilities, Schools, Faith Based Organizations
4.	Staffing – Utilizing Health Department staff in addition to staff within OPWDD homes to assist with vaccine administration. Using per diem nurses and volunteer nurses with a standing order.

Appendix includes specific locations of each county POD.



Regional Vaccination Plan | Vaccine Safety Monitoring

Vaccine POD and Safety Monitoring Plan

Delaware County

Delaware County	
1.	County Health Department Point of Contact – Heather Warner
2.	County Office of Emergency Management Contact – Steve Hood
3.	Refer to county POD plan for specific instructions on locations. Locations include: Hospitals, Local Health Departments, Assisted Living Facilities, Community Services, Schools,
4.	Staffing – Collaborating with local hospitals including Margaretville, O’Connor, and UHS Delaware Valley Hospital

Appendix includes specific locations of each county POD.



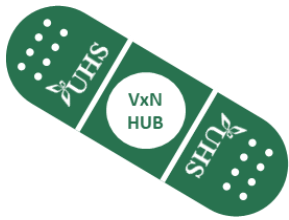
Regional Vaccination Plan | Vaccine Safety Monitoring

Vaccine POD and Safety Monitoring Plan

Schuyler County

Schuyler County	
1.	County Health Department Point of Contact – Deborah Minor
2.	County Office of Emergency Management Contact – Emily Warfle
3.	Refer to county POD plan for specific instructions on locations. Locations include: Public Health Department, Community Service Centers, Hospitals, Large Forums (Watkins Glen International and Watkins Glen High School Field House)
4.	Staffing – Collaborating with Schuyler Hospital and St. Joseph Hospital

Appendix includes specific locations of each county POD.



Regional Vaccination Plan | Vaccine Safety Monitoring

Vaccine POD and Safety Monitoring Plan

Steuben County

Steuben County	
1.	County Health Department Point of Contact – Peter Buzzetti
2.	County Office of Emergency Management Contact – Kristen Coro
3.	Refer to county POD plan for specific instructions on locations. Locations include: Public Health Department, Hospitals, Assisted Living Facilities, Community Service Organizations, Schools, Large Forum (Wayland Cohocton Field House)
4.	Staffing – MOU with Finger Lake Counties to provide assistance. Collaborating with St. James Hospital for staffing resources in addition to utilizing the Medical Reserve Corps.

Appendix includes specific locations of each county POD.



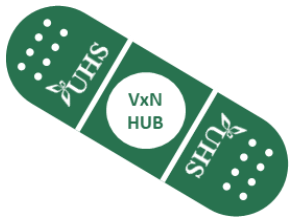
Regional Vaccination Plan | Vaccine Safety Monitoring

Vaccine POD and Safety Monitoring Plan

Tioga County

Tioga County	
1.	County Health Department Point of Contact – Kate Wait
2.	County Office of Emergency Management Contact – Mike Simmons
3.	Refer to county POD plan for specific instructions on locations. Locations include: Schools, Local Health Department, Faith Based Organizations
4.	Staffing – Collaborating with local Hospitals (Guthrie, Lourdes, and United Health Services) to provide assistance with staffing and POD operations

Appendix includes specific locations of each county POD.



Regional Vaccination Plan | Vaccine Safety Monitoring Vaccine POD and Safety Monitoring Plan Tompkins County

Tompkins County	
1.	County Health Department Point of Contact – Frank Kruppa
2.	County Office of Emergency Management Contact – Anne Hendrix
3.	Refer to county POD plan for specific instructions on locations. Locations include: Hospitals, Community Service Centers, Local Businesses, Schools, Faith Based Organizations, Public Health Departments
4.	Staffing – Partnership with Cayuga Health System. Hospital provides ordering and vaccinating staff. LHD provides Vaccinating and Data Entry staff

Appendix includes specific locations of each county POD.



Objectives

- UHS Supply Chain will serve as a conduit to critical supplies, equipment, transportation, and service needs for Regional Vaccination Network Partners. Resource facilitation through county, regional, state, and national channels will be maximized to meet any shortages or barriers realized in the Supply Chain.
- Safety of the caregiver and community will drive resource prioritization and optimization. To accomplish this, close collaboration with emergency management teams and state resources in a timely and efficient manner will remain a priority.

Core Deliverables

- Achieve Resource Alignment (Local – Regional – State)
- Prioritize Regional Resource Needs / Requests
- Promote and Achieve Safety (Zero Harm)
- Eliminate Access Barriers Resulting From Resource Challenges
- Prohibit Vaccine & Resource Waste

Request Pathway (Work Flow)

- Requests will be sent and received through the Regional HUB email address
- Regional HUB lead(s) will route request to appropriate UHS Subject Matter Expert (SME) & UHS HUB Resource Leader
- UHS SME will review request – Validate receipt with requestor – Request additional information as needed – Provide consistent / timely updates until resolution – Ensure escalation to resolution as necessary

SMEs will:

- Expedite solutions based upon impact on safety and access through a case by case evaluation.
- Utilize a collection of county, regional, and state resources to create efficient solutions based on cost, quality, and outcomes.
 - Generate opportunities for networking that pro-actively address resource shortages or failure points.



Regional Vaccination Plan | Logistics & Resource Requests

CORE FOUR RESOURCE CATEGORIES

Resource requests routed through the UHS HUB will be channeled to SMEs in one of these Core Categories.

Supplies

Due to global disruption of supply channels, timely identification and support of supply shortages is critical. Core product categories that will be of primary focus include but not limited to:

- PPE (gloves, masks, face shields)
- Needles – Syringes
- Support Supplies (alcohol pads, sharps containers, sanitizer, disinfectant)
- Cold Chain Requirements (dry ice, shipping containers/packaging, etc.)
- Respiratory Protection (N95 Masks, etc.)

Transportation

Supply, vaccine, and community member movement is both essential and at times challenging. Alignment across regional transportation partners must be achieved to ensure vaccine access to all populations. Specialized categories of transportation resources will include:

- Taxi / Cab (Ambulatory)
- Medivan (Wheelchair / Stretcher)
- Ambulance (EMS Services)
- Courier (Supply – Vaccine – Equipment)
- Cargo / Freight (POD Requirements)

Equipment

To support the activation of POD locations the Supply Chain team will provide resources through both local and regional partners. Resources will vary in complexity and include but not limited to:

- Shelter
- Basic office / medical office furniture
- Healthcare monitoring equipment
- Technology

Services

Daily workflow and operations that drive service needs will vary significantly dependent on each vaccination site. Regardless, any combination of services listed below may be required. Such resources will likely be delivered locally but may require regional coordination if shortages were to arise. Example include but not limited to:

- Security
- Cleaning / Disinfecting
- Repair / Maintenance
- Plowing
- Nourishment



HUB resource alignment will be depend heavily on collaboration and transparency from all Regional VxN partners.

OEM & Regional VxN Partners – Requirements:

- Accurate & timely reporting
- Resource sharing
- Pro-Active communication / resource

Ongoing Plan Development

Due to the complexity of the COVID-19 pandemic and resulting resource disruption that is ever changing the Logistics & Resource Request process will too be iterative. As needs are assessed, realized and met this plan will continually be refined to provide the greatest access to safe and reliable care.



Provider training and education is essential for a safe, effective and successful COVID-19 vaccination plan and program.

Goal: Develop a provider COVID-19 vaccine education plan that will support a safe, effective, and successful vaccination program in the Southern Tier region.

Requirements of Provider Education

- Must meet the needs and requirements of a diverse medical staff that includes multiple provider disciplines: physicians, nurse practitioners, and physician assistants in multiple clinical settings (hospital, primary care and specialty care).
- Individual provider learning styles need to be met to optimize the integration educational material into practice.
- The education plan will require frequent updates as additional vaccines, data and information becomes available from the CDC, FDA, Advisory Committee on Immunization Practices (ACIP) and the NYSDOH.



- 1- Understand the process for vaccine development, safety, and Emergency Use Authorization mechanism to gain approval for COVID-19 vaccine.
- 2- Understand the messenger RNA (mRNA) vaccine mechanism of action.
- 3- Describe general principles of storage and handling of the currently available COVID-19 vaccines.
- 4- Identify who is eligible for the COVID-19 vaccines, clinical consideration for special populations including those who are immunocompromised, pregnant, or breast feeding.
- 5- Identify who should not receive the vaccine (contraindication/warnings) or required to be referred to a provider for further evaluation (i.e. past history of severe allergic reaction to vaccines or to one of the ingredients in the vaccine) and who should delay receiving the COVID-19 vaccine (current diagnosis of COVID-19 within past 10 days, individuals under isolation/quarantine)
- 6- Describe the required patient information per CDC and FDA, COVID-19 Immunization and Consent Form.



Regional Vaccination Plan | Provider Training & Education

OBJECTIVES

- 7- Describe infection control practices including required PPE, hand hygiene, social distancing during monitoring and disinfection of the area between patients.
- 8- Describe how to administer the vaccine including required equipment and site of injection.
- 9- Describe common and serious adverse reactions to the currently available COVID-19 vaccines, the appropriate equipment and medication required to treat an allergic reaction.
- 10- Describe the required reporting to VAERS: Vaccine Adverse Event Reporting System.
- 11- Describe the vaccine administration schedule for the currently available vaccines (second vaccine, if required).
- 12- Recognize vulnerable population within the provider's practice/clinic (Health equity with particular focus on thoughtful and equitable distribution of the vaccine).
- 13- Describe the proper billing for the vaccine administration, as appropriate.



Regional Vaccination Plan | **Provider Training & Education** IMPLEMENTATION RECOMMENDATIONS

ACCOUNT FOR PREFERRED LEARNING STYLES

Provider training and education is multifaceted to meet educational needs and learning preferences.

MAKE RESOURCES AVAILABLE AND APPROACHABLE

Develop educational packets with key documents and links to CDC COVID-19 vaccine resources. Distribute electronic copies via email and hard copies via regular mail to providers and office supervisors.

PLAN FOR ACCOUNTABILITY

Require medical staff receiving education and training to attest to completing COVID-19 vaccination education.

USE EXISTING STRUCTURES

Schedule and record virtual learning opportunities using modalities such as Webex. Feature learning in medical staff meetings and lead provider meetings. Include guest speakers from pharmacy and Infectious Disease.

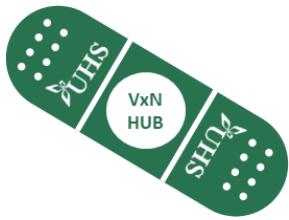


The UHS regional vaccine provider education committee will periodically evaluate the content and resources available to providers, especially as new COVID-19 vaccines become available and there are updates to the Pfizer and Moderna products.



SAMPLE LINKS

- CDC COVID-19 Provider Education modules
<https://www2.cdc.gov/vaccines/ed/covid19/>
- CDC COVID-19 Vaccine Clinical Resources page
<https://www.cdc.gov/vaccines/covid-19/index.html>
- CDC Vaccination Communication Toolkit:
<https://www.cdc.gov/vaccines/covid-19/health-systems-communication-toolkit.html#slides>
- CDC COVID-19 Clinical Training and Resources for HCP:
<https://www.cdc.gov/vaccines/covid-19/downloads/COVID-19-Clinical-Training-and-Resources-for-HCPs.pdf>
- CMO, pharmacy, and regional vaccine provider committee will forward new and relevant vaccine information to providers via email, CMO weekly newsletter, and/ or available intranet pages.

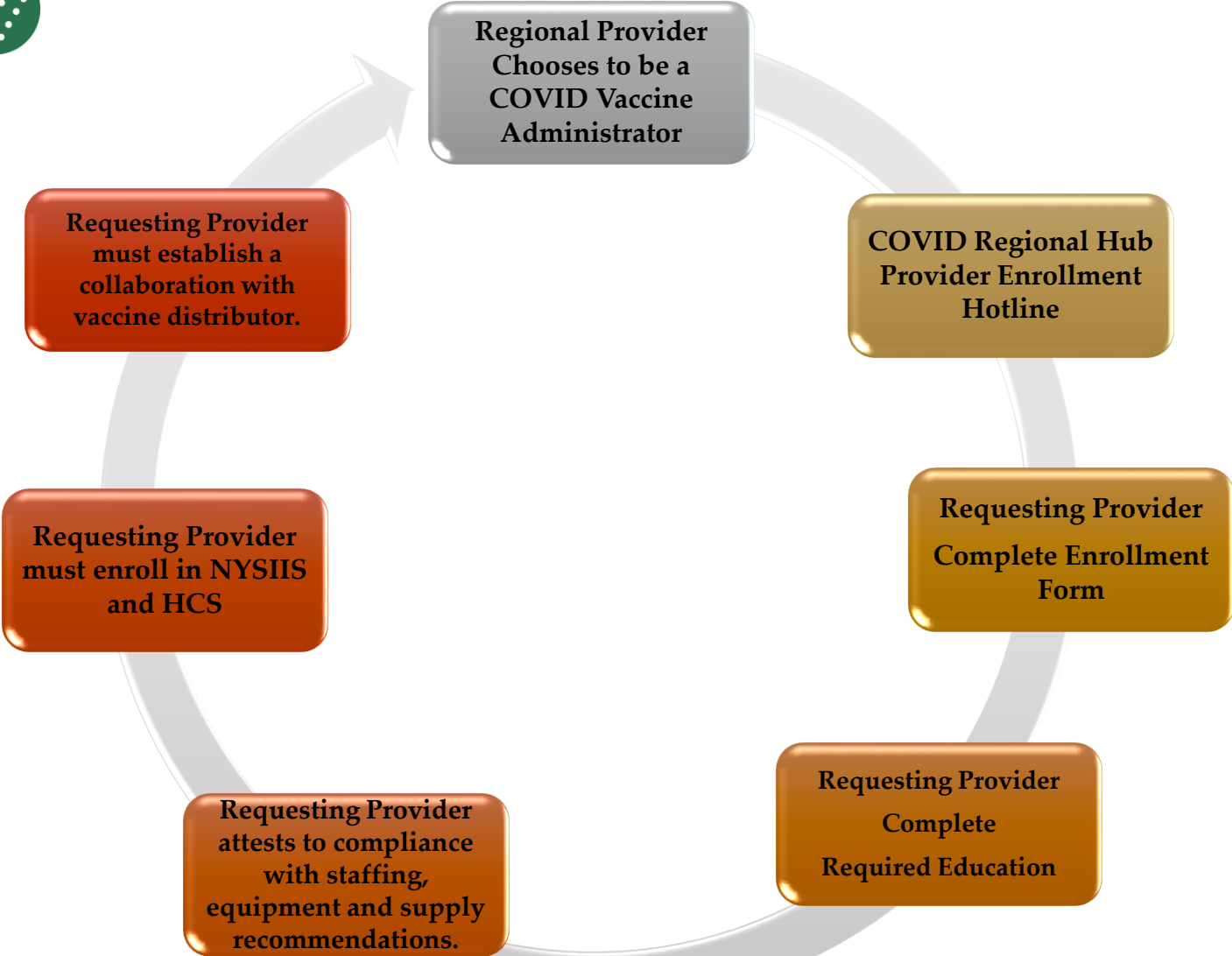
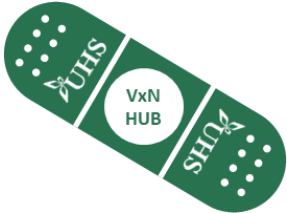


Regional Vaccination Plan | Provider Training & Education

SAMPLE EDUCATIONAL RESOURCES

Algorithm for the triage of persons presenting for mRNA COVID-19 vaccine

	MAY PROCEED WITH VACCINATION	PRECAUTION TO VACCINATION	CONTRAINDICATION TO VACCINATION
CONDITIONS	<p>CONDITIONS</p> <ul style="list-style-type: none"> Immunocompromising conditions Pregnancy Lactation <p>ACTIONS</p> <ul style="list-style-type: none"> Additional information provided* 15 minute observation period 	<p>CONDITIONS</p> <ul style="list-style-type: none"> Moderate/severe acute illness <p>ACTIONS</p> <ul style="list-style-type: none"> Risk assessment Potential deferral of vaccination 15 minute observation period if vaccinated 	<p>CONDITIONS</p> <ul style="list-style-type: none"> None <p>ACTIONS</p> <ul style="list-style-type: none"> N/A
ALLERGIES	<p>ALLERGIES</p> <ul style="list-style-type: none"> History of food, pet, insect, venom, environmental, latex, or other allergies not related to vaccines or injectable therapies History of allergy to oral medications (including the oral equivalent of an injectable medication) Non-serious allergy to vaccines or other injectables (e.g., no anaphylaxis) Family history of anaphylaxis Any other history of anaphylaxis that is not related to a vaccine or injectable therapy <p>ACTIONS</p> <ul style="list-style-type: none"> 30 minute observation period: Persons with a history of severe allergic reaction (e.g., anaphylaxis) due to any cause 15 minute observation period: Persons with allergic reaction, but not anaphylaxis 	<p>ALLERGIES</p> <ul style="list-style-type: none"> History of severe allergic reaction (e.g., anaphylaxis) to another vaccine (not including mRNA COVID-19 vaccines*) History of severe allergic reaction (e.g., anaphylaxis) to an injectable therapy <p>ACTIONS:</p> <ul style="list-style-type: none"> Risk assessment Potential deferral of vaccination 30 minute observation period if vaccinated 	<p>ALLERGIES</p> <ul style="list-style-type: none"> History of severe allergic reaction (e.g., anaphylaxis) to any component of an mRNA COVID-19 vaccine* <p>ACTIONS</p> <ul style="list-style-type: none"> Do not vaccinate





COVID Vaccine Provider Enrollment Hotline

- Work with community relations to identify a hotline number
- Communicate the number via CR team
- Identify Resources to answer the hotline
- Identify technology to track request



Vaccinator Enrollment Form

- Develop enrollment form with Pharmacy and Physician Leadership
- Work with Community Relations to post and push to regional partners



Training and Education

- Educate team that will be responsible for request and monitoring of regional partners.
- See education requirements
- Provider Training is being developed by the CDC/NYSDOH



Requesting Provider attest to compliance with resources

- Create check list of staffing, supplies, equipment (e.g. crash carts) that must be available to become a VxN administrator
- Appropriate cold chain capability
- Facility assessment
- Staffing Assessment
- Resources Assessment



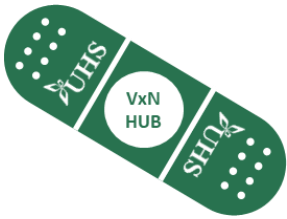
NYSIIS/HCS Enrollment

- Enrollment education
- Education on data entry of vaccine information



Establish a collaboration with a vaccine distributor

- Develop a list of potential regional vaccine distributors



Achieving data reporting & surveillance

- Utilizing information and tools available in electronic health records. From COVID-19 vaccine inventory to adverse reaction after administration can be monitored via various dashboards, metrics, and reports in many electronic health records.
- Leveraging NYSDOH provided dashboards and tools to monitor and control allocation or redistribution of vaccines.

Sample EHR capabilities

Category	Capability
Data	Grouping patients by vaccine criteria, vaccine inventory, vaccine schedule, vaccine waste, vaccine compliance for two doses
Surveillance	Adverse reactions and follow-up visits, other reactions, vaccine recalls
Reporting	COVID-19 vulnerability indicators by different groups, percent of eligible patients immunized, patients overdue for vaccine, Rx inventory wasted stock, upcoming COVID-19 vaccine second doses

Dashboards to supplement NYSDOH data where necessary



Additionally, the Southern Tier Regional VxN Hub will develop a dashboard for logistical and operations partners to include vaccination inventory statuses and other required supplies and resource status.



APPENDIX -- Southern Tier Regional VxN Hub POD Locations

Note: Timeframe and Locations are subject to change based on NYS Priority Groups, Vaccine allotment, and Staffing Resources

Week	County	Affiliation	POD Location	Type of POD	Total	
Week 1 - December 14 - December 20	1A Priority Group	Chemung	Hospital - Arnot Ogden Medical Center	600 Roe Ave, Elmire NY, 14905	Closed	
Week 2 - December 21 - December 27	1A Priority Group	Broome	Hospital - United Health Services Hospitals	10-42 Mitchell Ave, Binghamton NY, 13905	Closed	
		Hospital - United Health Services Hospitals	33-57 Harrison St., Johnson City NY, 13790	Closed		
		Hospital - Our Lady of Lourdes Hospital	169 Riverside Drive, Binghamton NY, 13905	Closed		
Chemung	Hospital - Arnot Ogden Medical Center	600 Roe Ave, Elmire NY, 14905	Closed			
		Hospital - St. Joseph's Hospital	555 St. Joseph's Blvd, Elmira NY, 14901	Closed		
Chenango	Hospital - UHS Chenango Memorial Hospital	179 N. Broad St, Norwich, NY 13815	Closed			
Delaware	Hospital - Delaware Valley Hospital	1 Titus Pl, Walton NY, 13856	Closed			
		Hospital - O'Connor Hospital	460 Andes Rd, Delhi NY, 13753	Closed		
		Hospital - Margaretville Hospital	42084 NY-28, Margaretville NY, 12455	Closed		
		Hospital - A.O. Fox Tri-Town Hospital	43 Pearl St, W. Sidney NY, 13838	Closed		
Schuyler	Hospital - Schuyler Hospital	220 Steuben St, Montour Falls NY, 14865	Closed			
Steuben	Hospital - St. James Hospital	7329 Seneca Rd N, Hornell NY, 14843	Closed			
		Hospital - Guthrie Corning Hospital	1 Guthrie Drive, Corning NY, 14830	Closed		
		Hospital - Ira Davenport Memorial Hospital	7571 NY-54, Bath NY, 14810	Closed		
Tompkins	Hospital - Cayuga Medical Center	40 Catherwood Rd, Ithaca NY, 14850	Closed			
Week 3 - December 28 - January 3	1A Priority Group	Broome	Hospital - United Health Services Hospitals	10-42 Mitchell Ave, Binghamton NY, 13905	Closed	
		Hospital - United Health Services Hospitals	33-57 Harrison St., Johnson City NY, 13790	Closed		
		Hospital - United Health Services Hospitals	4417 Vestal Parkway East, Vestal NY 13850	Closed		
		Hospital - Our Lady of Lourdes Hospital	169 Riverside Drive, Binghamton NY, 13905	Closed		
		FQHC - Cornerstone Family Health Care	35 Felters Rd. #8, Binghamton NY, 13903	Closed		
Chemung	Hospital - Arnot Ogden Medical Center	600 Roe Ave, Elmire NY, 14905	Closed			
		Hospital - St. Joseph's Hospital	555 St. Joseph's Blvd, Elmira NY, 14901	Closed		
Chenango	Hospital - UHS Chenango Memorial Hospital	179 N. Broad St, Norwich, NY 13815	Closed			
Delaware	Hospital - Delaware Valley Hospital	1 Titus Pl, Walton NY, 13856	Closed			
		Hospital - O'Connor Hospital	460 Andes Rd, Delhi NY, 13753	Closed		
		Hospital - Margaretville Hospital	42084 NY-28, Margaretville NY, 12455	Closed		
		Hospital - A.O. Fox Tri-Town Hospital	43 Pearl St, W. Sidney NY, 13838	Closed		
Schuyler	Hospital - Schuyler Hospital	220 Steuben St, Montour Falls NY, 14865	Closed			
Steuben	Hospital - St. James Hospital	7329 Seneca Rd N, Hornell NY, 14843	Closed			
		Hospital - Guthrie Corning Hospital	1 Guthrie Drive, Corning NY, 14830	Closed		
		Hospital - Ira Davenport Memorial Hospital	7571 NY-54, Bath NY, 14810	Closed		
Tompkins	Hospital - Cayuga Medical Center	40 Catherwood Rd, Ithaca NY, 14850	Closed			
Week 4 - January 4 - January 10	1A Priority Group	Broome	Public Health - Broome County Health Department	225 Front St, Binghamton NY, 13905	Closed	
		Hospital - United Health Services Hospitals	10-42 Mitchell Ave, Binghamton NY, 13905	Closed		
		Hospital - United Health Services Hospitals	33-57 Harrison St., Johnson City NY, 13790	Closed		
		Hospital - United Health Services Hospitals	4417 Vestal Parkway East, Vestal NY 13850	Closed		
		Hospital - Our Lady of Lourdes Hospital	169 Riverside Drive, Binghamton NY, 13905	Closed		
		FQHC - Cornerstone Family Health Care	35 Felters Rd. #8, Binghamton NY, 13903	Closed		
Chenango	Hospital - UHS Chenango Memorial Hospital	179 N. Broad St, Norwich, NY 13815	Closed			
Chemung	Hospital - Arnot Ogden Medical Center	600 Roe Ave, Elmire NY, 14905	Closed			
		Hospital - St. Joseph's Hospital	555 St. Joseph's Blvd, Elmira NY, 14901	Closed		
		Community Services - Artic League	249 W. Clinton St. Elmira NY, 14901	Closed		
Delaware	Hospital - Delaware Valley Hospital	1 Titus Pl, Walton NY, 13856	Closed			
		Hospital - O'Connor Hospital	460 Andes Rd, Delhi NY, 13753	Closed		
		Hospital - Margaretville Hospital	42084 NY-28, Margaretville NY, 12455	Closed		
		Hospital - A.O. Fox Tri-Town Hospital	43 Pearl St, W. Sidney NY, 13838	Closed		
Schuyler	Hospital - Schuyler County Human Services	323 Owego St, Montour Falls NY, 14865	Closed			
		Public Health - Schuyler County Children & Family Services	612 S. Decatur St, Watkins Glen NY, 14891	Closed		
		Hospital - Schuyler Hospital	220 Steuben St, Montour Falls NY, 14865	Closed		
Steuben	Public Health - Steuben County Public Health	3 Pulteney Square, Bath NY, 14810	Closed			
		Hospital - St. James Hospital	7329 Seneca Rd N, Hornell NY, 14843	Closed		
		Hospital - Guthrie Corning Hospital	1 Guthrie Drive, Corning NY, 14830	Closed		
		Hospital - Ira Davenport Memorial Hospital	7571 NY-54, Bath NY, 14810	Closed		
Tioga	N/A	N/A	N/A	Closed		
Tompkins	Hospital - Cayuga Medical Center	40 Catherwood Rd, Ithaca NY, 14850	Closed			
		Long Term Care Facilities (coordinated through NYS)	CVS started administering resident and employees vaccines	Closed		
Week 5 - January 11 - January 17	1A & 1B Priority Group	Broome	Public Health - Broome County Health Department	225 Front St, Binghamton NY, 13905	Closed	
		Hospital - United Health Services Hospitals	10-42 Mitchell Ave, Binghamton NY, 13905	Closed		
		Hospital - United Health Services Hospitals	33-57 Harrison St., Johnson City NY, 13790	Closed		
		Hospital - United Health Services Hospitals	4417 Vestal Parkway East, Vestal NY 13850	Closed		
		Hospital - Our Lady of Lourdes Hospital	169 Riverside Drive, Binghamton NY, 13905	Closed		
		FQHC - Cornerstone Family Health Care	35 Felters Rd. #8, Binghamton NY, 13903	Closed		
Chenango	Public Health - Chenango County Health Department	5 Court St, Norwich NY, 13815	Closed			
		Hospital - UHS Chenango Memorial Hospital	179 N. Broad St. Norwich, NY 13815	Closed		
Chemung	Hospital - Arnot Ogden Medical Center	600 Roe Ave, Elmire NY, 14905	Closed			
		Hospital - St. Joseph's Hospital	555 St. Joseph's Blvd, Elmira NY, 14901	Closed		
		Community Services - Artic League	249 W. Clinton St. Elmira NY, 14901	Closed		
Delaware	Hospital - Delaware Valley Hospital	1 Titus Pl, Walton NY, 13856	Closed			
		Hospital - O'Connor Hospital	460 Andes Rd, Delhi NY, 13753	Closed		
		Hospital - Margaretville Hospital	42084 NY-28, Margaretville NY, 12455	Closed		
		Hospital - A.O. Fox Tri-Town Hospital	43 Pearl St, W. Sidney NY, 13838	Closed		
Schuyler	Public Health - Schuyler County Human Services	323 Owego St, Montour Falls NY, 14865	Closed			
		Public Health - Schuyler County Children & Family Services	612 S. Decatur St, Watkins Glen NY, 14891	Closed		
		Hospital - Schuyler Hospital	220 Steuben St, Montour Falls NY, 14865	Closed		
Steuben	Public Health - Steuben County Public Health	3 Pulteney Square, Bath NY, 14810	Closed			

	Hospital - St. James Hospital	7329 Seneca Rd N, Hornell NY, 14843	Closed
	Hospital - Guthrie Corning Hospital	1 Guthrie Drive, Corning NY, 14830	Closed
	Hospital Ira Davenport Memorial Hospital	7571 NY-54, Bath NY, 14810	Closed
Tioga	Hospital - UHS Primary Care at Owego	42 W. Main St, Owego NY, 13827	Closed
Tompkins	Hospital - Cayuga Medical Center	40 Catherwood Rd, Ithaca NY, 14850	Closed
	Long Term Care Facilities (coordinated through NYS)	CVS continued administering resident and employees vaccines	Closed

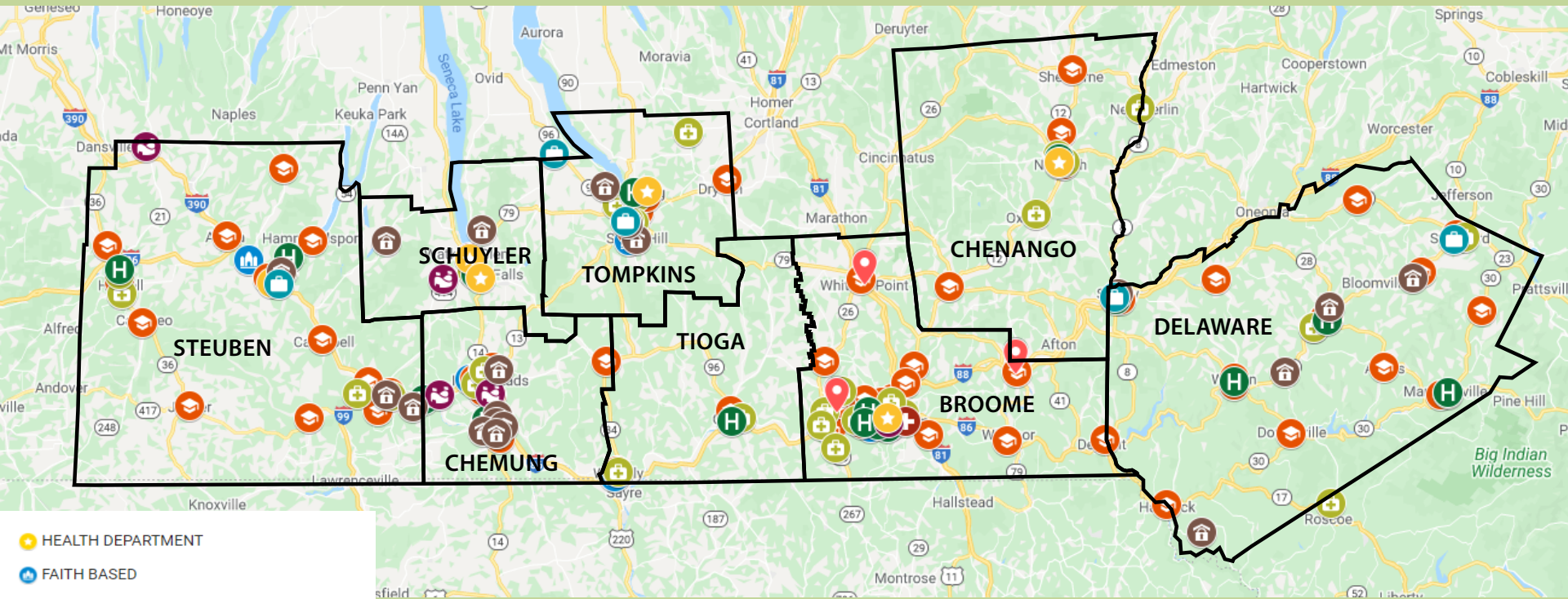
Week 6 - January 18 - January 24 & the weeks following. These PODS can provide vaccines for both Priority Groups (1A, 1B, 1C, & 2) and the Generalized Population (3) and will be established based on NYS Priority Groups, Vaccine Allotment, Health Equity, and Staffing Resources.

County	Affiliation	POD Location		
Broome - 32	Public Health - Broome County Health Department	225 Front St, Binghamton NY, 13905	Closed	
	Hospital - United Health Services Hospitals	10-42 Mitchell Ave, Binghamton NY, 13905	Closed	
	Hospital - United Health Services Hospitals	33-57 Harrison St., Johnson City NY, 13790	Closed	
	Hospital -United Health Services Hospitals	4417 Vestal Parkway East, Vestal NY 13850	Closed	
	Hospital - Our Lady of Lourdes Hospital	169 Riverside Drive, Binghamton NY, 13905	Closed	
	FQHC - Cornerstone Family Health Care	35 Felters Rd. #8, Binghamton NY, 13903	Closed	
	Assisted Living - Eastern Broome Senior Center	27 Golden Lane Harpursville	Closed	
	Assisted Living - Western Broome Senior Center	2801 Wayne Street Endwell	Closed	
	Assisted Living Northern Broome Senior Center	12 Strongs Place Whitney Point	Closed	
	Large Forum - Broome County Arena	1 Stuart St Binghamton	Closed	
	University - Broome Community College	907 Upper Front St Binghamton	Closed	
	School - Johnson City Schools	666 Reynolds Rd Johnson City	Closed	
	School - Windsor Central Schools	1191 NY Rt 79 Windsor	Closed	
	School - Binghamton East Middle	167 E. Fredrick St Binghamton	Closed	
	School - Union Endicott Schools	1200 E. Main St Endicott	Closed	
	School - Vestal Central Schools	205 Woodlawn Dr Vestal	Closed	
	School - Binghamton High School	31 Main St Binghamton	Closed	
	School - St. Johns Catholic School	9 Livingston St Binghamton	Closed	
	School - Broome Tioga BOCES	435 Glenwood Rd Binghamton	Closed	
	School - Chenango Forks High School	1 Gordon Dr Binghamton	Closed	
	School - Harpursville Central School	54 Main St Harpursville	Closed	
	School - Chenango Valley High School	221 Chenango Valley Rd Binghamton	Closed	
	School - Whitney Point High School	10 Keibel Rd Whitney Point	Closed	
	School - Maine Endwell High School	750 Farm to Market Rd Endwell	Closed	
	School - Maine Memorial Elementary School	2693 NY State Rt 26 Maine	Closed	
	School - Deposit Central School	171 Second St Deposit	Closed	
	School - Susquehanna Valley High School	1040 Conklin Rd Conklin	Closed	
	Faithbased - Broome County Council Churches	3 Otsenigo St, Binghamton NY, 13903	Closed	
	Faithbased - Jewish Community Center	500 Clubhouse Rd, Vestal NY, 13850	Closed	
	Faithbased - Islamic Organization of the Southern Tier	161 Grand Ave, Johnson City NY, 13790	Closed	
	University - Binghamton University	4400 Vestal Parkway East, Binghamton NY, 13902	Closed	
	University - Binghamton University School of Pharmacy	96 Corliss Ave, Johnson City NY 13790	Closed	
	Chenango - 9	Public Health - Chenango County Health Department	5 Court St, Norwich NY, 13815	Closed
		Hospital - UHS Chenango Memorial Hospital	179 N. Broad St. Norwich, NY 13815	Closed
		Public Health - Chenango County Hospice	33-39 Court St Norwich	Closed
		Assisted Living - Chase Memorial Nursing Home	1 Terrace Heights New Berlin	Closed
		School - Greene Schools	40 South Canal St Greene	Closed
		School - Norwich Schools	39 Midland Dr Norwich	Closed
		School - Sherburne Schools	15 School St Sherburne	Closed
		School - DCMO Boces	6678 County Rd 32, Norwich NY, 13815	Closed
Faithbased - Catholic Charities of Chenango County		34-36 Berry St, Norwich NY, 13815	Closed	
Chemung - 31		Hospital - Arnot Ogden Medical Center	600 Roe Ave, Elmira NY, 14905	Closed
		Hospital - St. Joseph's Hospital	555 St. Joseph's Blvd, Elmira NY, 14901	Closed
		Community Service - Artic League	249 W. Clinton St. Elmira NY, 14901	Closed
	Community Service - Able 2 enhancing Potential Inc	398 Old Ithaca Rd Horseheads	Closed	
	Assisted Living - AIM Independent Living	350 W. Church St Elmira	Closed	
	Community Service - ARC of Chemung	711 Sullivan St Elmira	Closed	
	Assisted Living - Bethany Village	3005 Watkins Rd Horseheads	Closed	
	Community Service - Capabilities Inc	1149 Sullivan St Elmira	Closed	
	Assisted Living - CC DOA & LTC	425 Pennsylvania Av Elmira	Closed	
	Community Service - CC Home Care Agency	103 Washington St Elmira	Closed	
	Community Service - Economic Opportunity Program Inc	650 Baldwin St Elmira	Closed	
	Assisted Living - Elcor Nursing and Rehabilitation Center	48 Colonial Dr Horseheads	Closed	
	Community Service - Emstar	1058 W. Church St Elmira	Closed	
	Community Service - Family Home Care Services	1019 E. Water St Elmira	Closed	
	Community Service - Glove House	220 Franklin St Elmira	Closed	
	Community Service - Guthrie Home Health	8 Dennison Parkway Corning	Closed	
	Community Service - Kindred at Home	11849 East Corning Rd Corning	Closed	
	Large Forum - Chemung County Fairgrounds	170 Fairview Rd Horseheads	Closed	
	School - Elmira High School	777 S. Main St Elmira	Closed	
	School - Ernie Davis Academy	933 Hoffman St Elmira	Closed	
School - Horseheads Intermediate School	952 Sing Sing Rd Horseheads	Closed		
School - Big Flats Community Center	467 Maple St Big Flats	Closed		
School - George Washington Elementary School	430 Washington Av Elmira	Closed		
School - Ernie Davis Community Center EOP	350 E. 5th St Elmira	Closed		
School - Ridge Road Elementary School	112 Ridge Rd Horseheads	Closed		
School - Van Etten Elementary School	7 Langston St Van Etten	Closed		
School - GST BOCES Bush Campus	459 Philo Rd Horseheads	Closed		
School - Greather Southern Tier Boces	3153 Lake Rd, Horseheads NY, 14845	Closed		
University - Elmira College	1 Park Pl, Elmira NY, 14901	Closed		
Faithbased - Islamic Association of the Fingerlakes	499 Hickory Grove Rd, Horseheads NY, 14845	Closed		
Faithbased - Catholic Charities of Chemung/Schuyler Counties	215 E. Church St. #100, Elmira NY, 14901	Closed		
Delaware - 40	Hospital - Delaware Valley Hospital	1 Titus Pl, Walton NY, 13856	Closed	
	Hospital - O'Connor Hospital	460 Andes Rd, Delhi NY, 13753	Closed	
	Hospital - Margaretville Hospital	42084 NY-28, Margaretville NY, 12455	Closed	
	Hospital - A.O. Fox Tri-Town Hospital	43 Pearl St, W. Sidney NY, 13838	Closed	
	Community Service - ARC of Delaware	34570 NY-10 Walton	Closed	
	Assisted Living - Countryside Care Center Nursing Home	41861 St Hwy 10 Delhi	Closed	
	Assisted Living - Mountainside Residential Care Center	42158 NY-28 Margaretville	Closed	
	Assisted Living - Robinson Terrace Nursing Home	28652 NY-23 Stamford	Closed	

	Assisted Living - Kirkside Adult Home	5385 State Hwy 30 Roxbury	Closed
	Community Service - Delaware Regional Center Walton Office	Walton	Closed
	Community Service - Phoenix House Rehab	Belle Terre South Kortright	Closed
	Community Service - Joshua House	10 Division St Sidney	Closed
	Community Service - Delaware County Fire and EMS	TBD	Closed
	Community Service - Catskill Hospice Staff	TBD	Closed
	Community Service - Delaware County Sheriff	280 Phoebe Ln Delhi	Closed
	Local Business - Amphenol Aerospace	40-60 Delaware St Sidney	Closed
	Local Business - Covidien Inc.	172 Railroad Av Stamford	Closed
	Hancock Family Foundation	431 Chapel Hill Rd Hancock	Closed
	School - Delhi School Based Health Bassett	460 Andes Rd Delhi	Closed
	School - Sidney School Based Health Bassett	39 Pearl St W. Sidney	Closed
	School - South Kortright School Based Bassett	58200 NY-10 South Kortright	Closed
	School - Stamford School Based Bassett	32 Main St Suite 34 Stamford	Closed
	School - Andes Central School	85 Delaware Av Andes	Closed
	School - Charlotte Valley School	15611 State Highway 23 Davenport	Closed
	School - Delaware Academy Elementary	2 Sheldon Dr Delhi	Closed
	School - Deposit Elementary	171 Second St Deposit	Closed
	School - Deposit Middle/High School	171 Second St Deposit	Closed
	School - Downsville Central School	14784 NY-30 Downsville	Closed
	School - Franklin Central School	26 Institute St Franklin	Closed
	School - Hancock Central School	67 Education Lane Hancock	Closed
	School - Margaretville Central School	415 Main St Margaretville	Closed
	School - Roxbury Central School	53729 St. Hwy 30 Roxbury	Closed
	School - Sidney Elementary	15 Pearl St East Sidney	Closed
	School - Sidney High School	95 W Main St Sidney	Closed
	School - Sidney Middle School	95 W Main St Sidney	Closed
	School - South Kortright Central School	58200 St. Hwy 10 South Kortright	Closed
	School - Stamford Central School	1 River St Stamford	Closed
	School - Walton Elementary School	42-66 North St Walton	Closed
	School - Walton Middle/High School	47-49 Stockton Av Walton	Closed
	University - SUNY Delhi	2 Main St Delhi	Closed
Schuyler - 9	Public Health - Schuyler County Human Services	323 Owego St, Montour Falls NY, 14865	Closed
	Communit Service - Schuyler County Children & Family Services	612 S. Decatur St, Watkins Glen NY, 14891	Closed
	Hospital - Schuyler Hospital	220 Steuben St, Montour Falls NY, 14865	Closed
	Large Forum - Watkins Glen International	2790 County Rd 16 Watkins Glen	Closed
	Community Service - Tyrone Fire Dept	3600 NY 226 Tyrone	Closed
	Community Service - Burdett Fire Dept	4124 Lake Av Burdett	Closed
	Community Service - Schuyler County Human Services Complex	323 Owego St Montour Falls	Closed
	Large Forum - Watkins Glen HS Field House	301 12th St Watkins Glen	Closed
	Community Service - ARC of Schuyler	323 Owego St Watkins Glen	Closed
Steuben - 31	Public Health - Steuben County Public Health	3 Pulteney Square, Bath NY, 14810	Closed
	Hospital - St. James Hospital	7329 Seneca Rd N, Hornell NY, 14843	Closed
	Hospital - Guthrie Corning Hospital	1 Guthrie Drive, Corning NY, 14830	Closed
	Hospital - Ira Davenport Memorial Hospital	7571 NY-54, Bath NY, 14810	Closed
	Assisted Living - Absolut Center Nursing @ Three Rivers	101 Creekside Dr Painted Post	Closed
	Assisted Living - Stueben Center For Rehab and Healthcare	7009 Rumsey St Bath	Closed
	Assisted Living - Elderwood at Hornell	1 Bethesda Dr Hornell	Closed
	Assisted Living - Corning Center for Rehab and Healthcare	205 E 1st St Corning	Closed
	Assisted Living - Hornell Gardens	434 Monroe Av Hornell	Closed
	Community Service - Responder Closed Deputy Fire Corp Regions	TBD	Closed
	Community Service - Steuben County Sheriff	7007 rumsey St Bath	Closed
	Community Service - Pathways Inc	TBD	Closed
	Community Service - ARC of Steuben	TBD	Closed
	Assisted Living - AIM	TBD	Closed
	Community Service - OPWDD	TBD	Closed
	School - Bath High School	25 Elias Av Bath	Closed
	School - Corning High School	201 Cantigny St Corning	Closed
	School - Corning Middle School	35 Victory Highway Painted Post	Closed
	School - Hornell School	132 Seneca St Hornell	Closed
	School - Addison High School	1 Colwell St Addison	Closed
	School - Arkport High School	35 East Av Arkport	Closed
	School - Avoca Central School	17 Oliver St Avoca	Closed
	University - Suny Corning College	1 Acedmic Dr, Corning NY, 14830	Closed
	Municipal Location - Bath Transportation Building	6961 State Route 415 Bath	Closed
	School - Campbell Savona High School	8455 CR 125 Campbell	Closed
	School - Canisteo Greenwood Elem/Middle School	84 Greenwood St Canisteo	Closed
	School - Hammondsport Central School	8272 Main St Hammondsport	Closed
	School - Jasper Troupsburg High School	3769 NY 417 Jasper	Closed
	School - Prattsburgh Central School	1 Academy St Prattsburgh	Closed
	Large Forum - Wayland Cohocton Field House	2350 NY 63 Wayland	Closed
	Faithbased - Family Life Network	7634 Campbell Creek Rd. Bath NY, 14810	Closed
Tioga - 4	School - Owego High School	1 Sheldon Guile Blvd Owego	Closed
	School - Waverly High School	1 Frederick St Waverly	Closed
	Faithbased - Valley United Presbyterian Church	459 Park Av Waverly	Closed
	Faithbased - Tioga County Rural Ministry	143 North Ave, Owego NY, 13827	Closed
Tompkins - 16	Hospital - Cayuga Medical Center	40 Catherwood Rd, Ithaca NY, 14850	Closed
	Community Service - Racker	3226 Wilkins Rd Ithaca	Closed
	Community Service - Hospice of Tompkins County	172 E King Rd Ithaca	Closed
	Community Service - Kendal at Ithaca	2230 N Triphammer Rd Ithaca	Closed
	Local Business - Wegmans	500 S Meadow St Ithaca	Closed
	Community Service - Ithaca Housing Authority	800 S. Plain St Ithaca	Closed
	School - TST BOCES	170 North St Dryden	Closed
	University - Cornell University Bartel Hall	554 Campus Rd Ithaca	Closed
	School - TST BOCES	555 Warren Rd Ithaca	Closed
	Faithbased - Newfield United Methodist Church	227 Main St Ithaca	Closed
	Hospital - Cayuga Medical Center Sampling Site	40 Catherwood Rd Ithaca	Closed
	Local Business - Trumansburg American Legion	4431 E Seneca Rd Trumansburg	Closed
	Public Health - Tompkins County Health Dept	55 Brown Rd Ithaca	Closed
	University - Tompkins Cortland Community College	170 North St Dryden	Closed
	University - Ithaca Univesity	953 Danby Rd, Ithaca NY, 14850	Closed

Total - 172

Southern Tier Region POD Locations

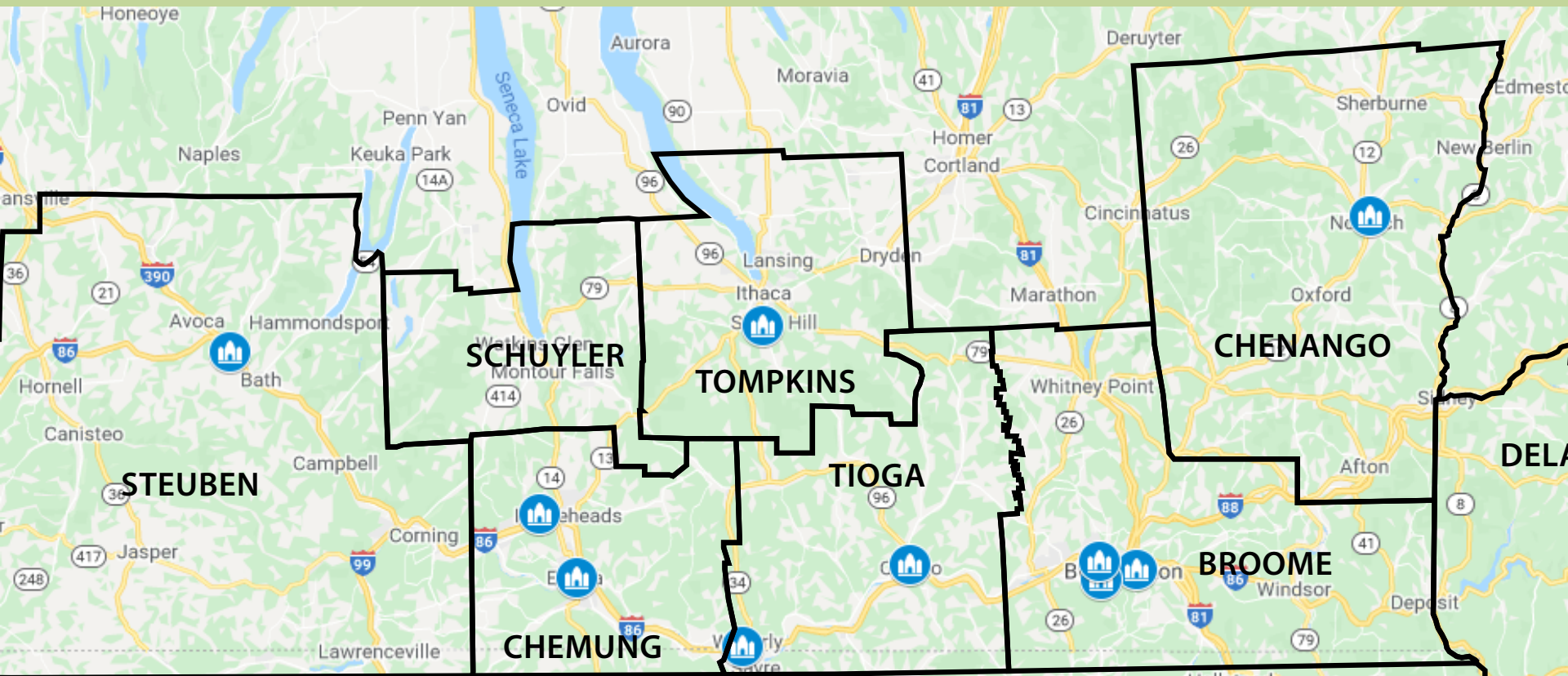


- HEALTH DEPARTMENT
- FAITH BASED
- UNIVERSITY/BOCES/SCHOOLS
- ADULT CARE FACILITY
- HOSPITAL
- FQHC
- LARGE VENUE
- COMMUNITY BASED
- SENIOR CENTER
- BUSINESS

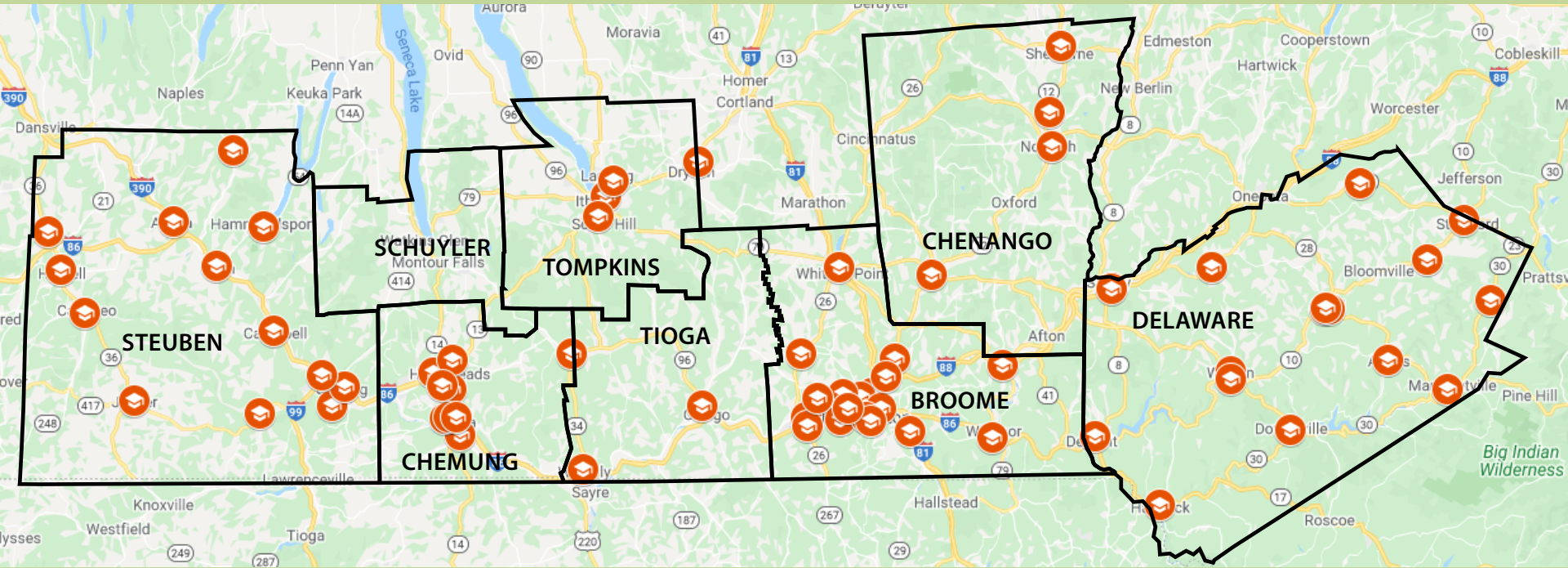
Southern Tier Region

Faith Based Organization

POD Locations

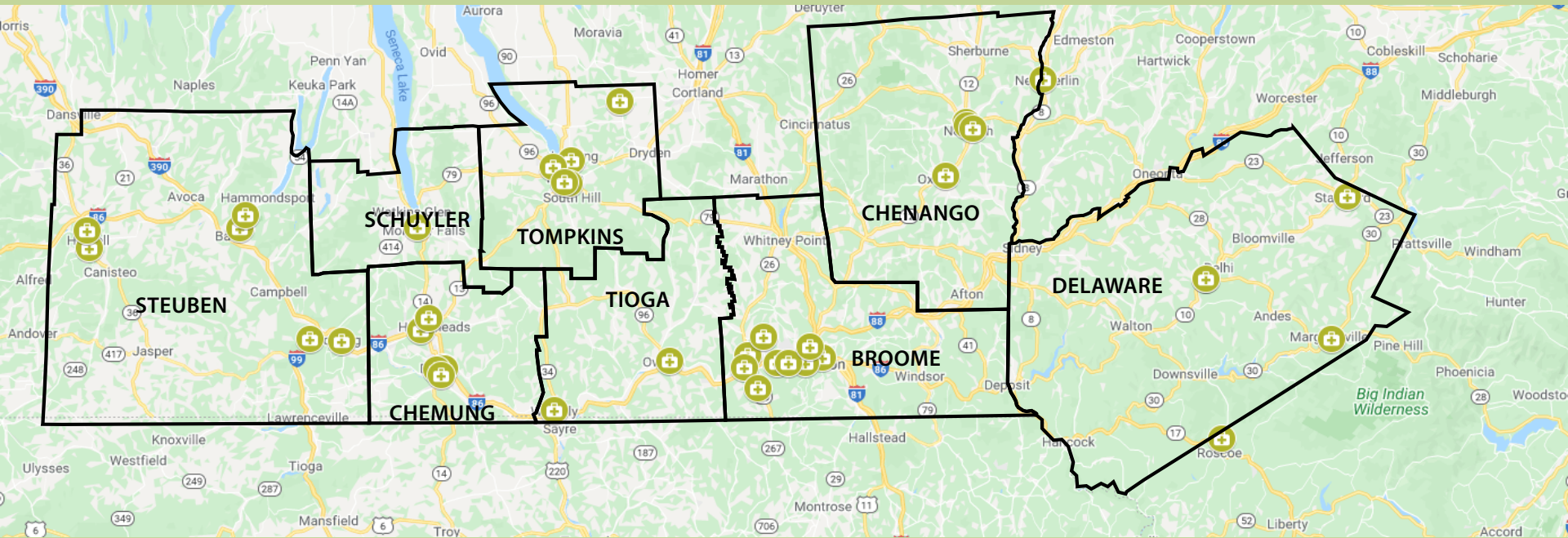


Southern Tier Region Universities/BOCES/Schools POD Locations



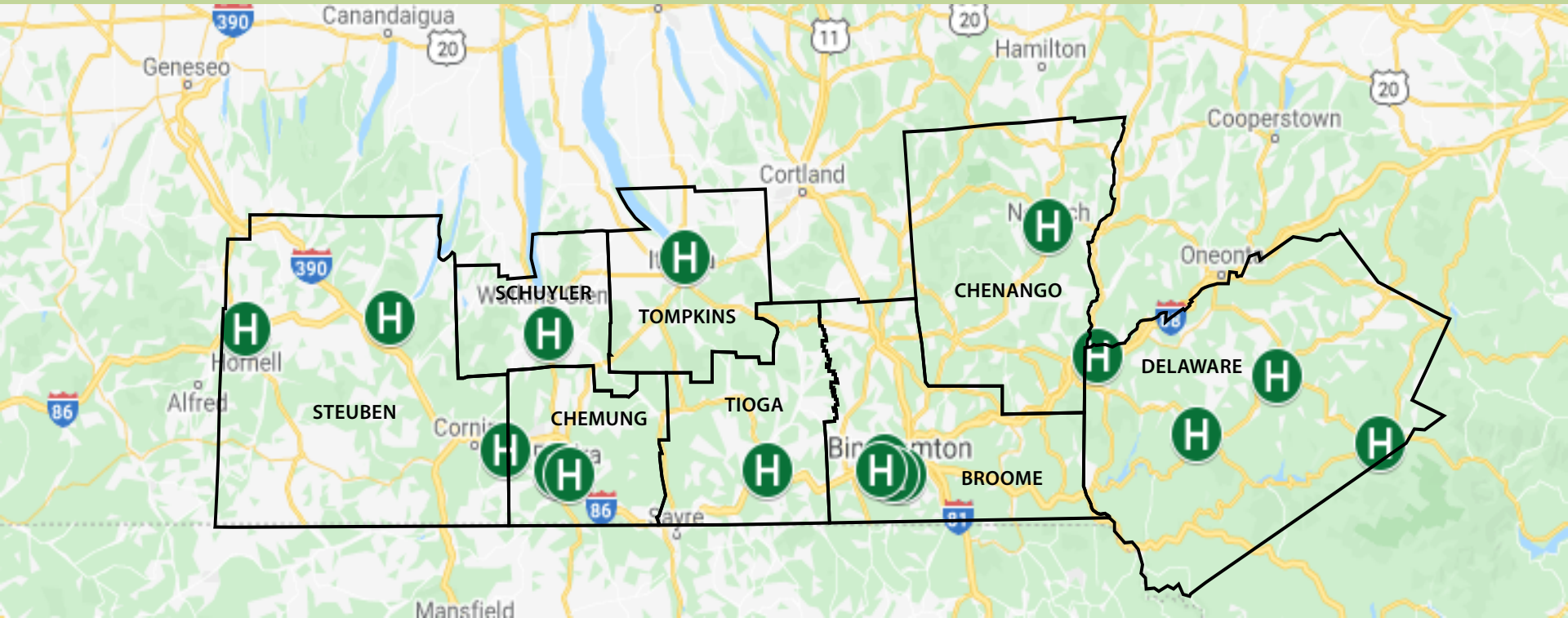
Southern Tier Region

Adult Care Facility POD Locations



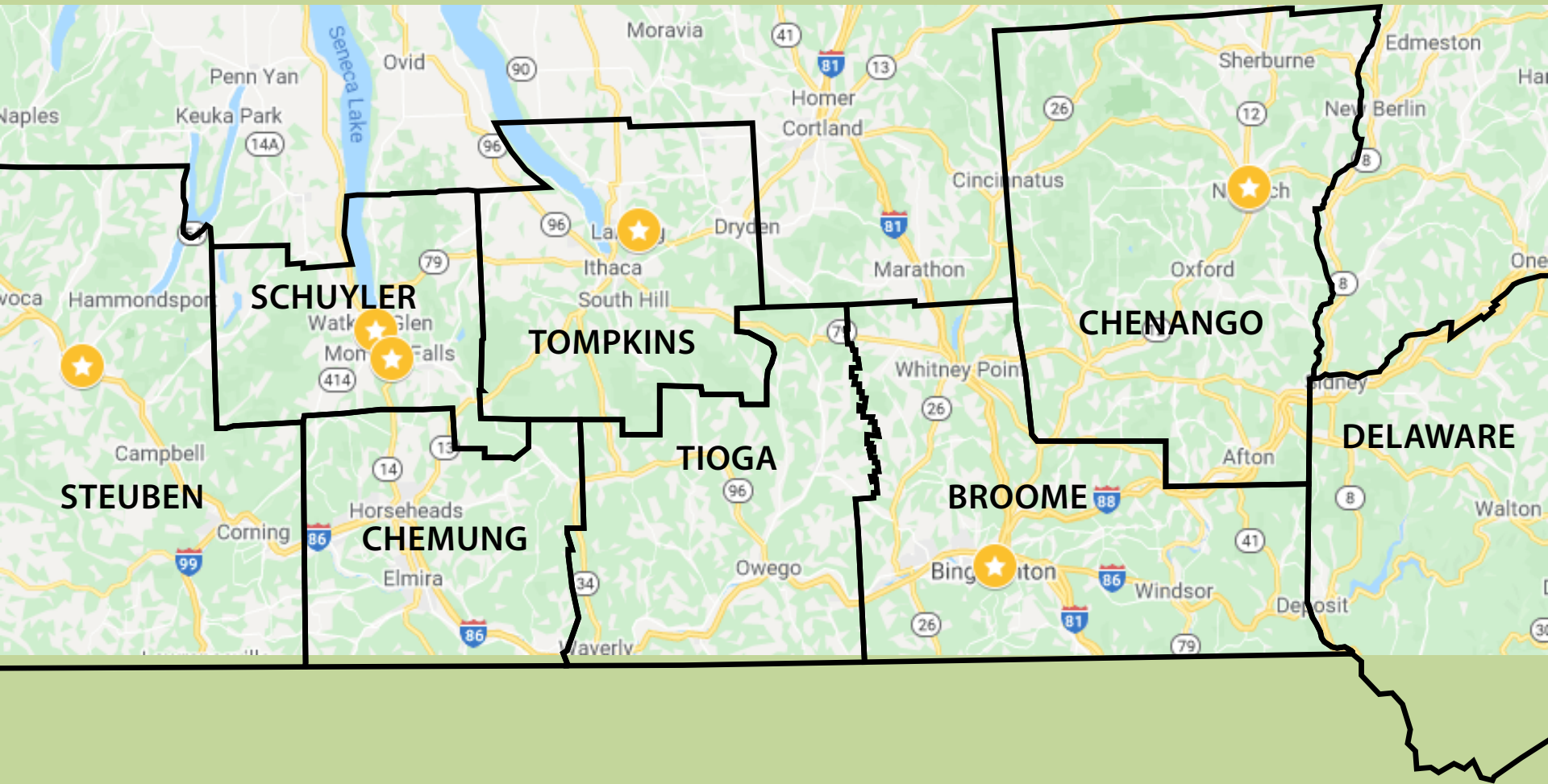
Southern Tier Region

Hospital POD Locations



Southern Tier Region

County Health Department POD Locations



Southern Tier Region

Senior/FQHC/Large Venue POD Locations

