



RESTORATION AND HOPE FOR REFUGEE (REHORE)

Nsambia Ave Maria
Makindye Division.
Kampala Uganda
Tel: +256(0)783292020
Email: rehoreuganda @yahoo.com

PROJECT PROPOSAL 2013: EMPOWERING THE VULNERABLE AFFECTED REFUGEE WOMEN WITH SEWING AND TAILORING TRAINING SKILLS

PROJECT SUMMARY

PROJECT TITLE	Empowering Vulnerable affected refugee women in Kampala with Sewing and Tailoring training skills
PROJECT DURATION	Six months. (Starting when we get the funds)
AMOUNT REQUESTED	5000 \$ USA
PROJECT AREAS	Kampala district(Nsambya Ave Maria, Makindye Division)

APPLICANT INFORMATION

NAME OF ORGANITION	RESTORATION AND HOPE FOR REFUGEE (REHORE)
PHYSICAL ADDRESS	NSAMBYA AVE MARIA
POSTAL ADDRESS	6016 , KAMPALA , UGANDA
EMAIL ADDRESS	rehoreuganda@yahoo.com
FAX	+256414501278
CONTACT PERSON	ZIHALIRWA Mushengezi
TITLE	EXECUTIVE DIRECTOR
CONTACT TELEPHONE	+256(0)752638119
EMAIL	zihalirwam@gmail.com
DATE OF SUBMISSION	29 August 2013

Title: Empowering vulnerable affected refugees' women with sewing and Tailoring training skills.

The REHORE sewing and tailoring training centre started in August 2012. Training is held at the office of REHORE.

This is meant to empower and support the vulnerable affected refugee women in all their various categories in Kampala Uganda to have a skill so they have a way to make an income and become self sustained. As many of the vulnerable affected refugees women are unemployed, a practical skill is important to enhance their possibility of generating an income.

The money the women earn helps their families pay for food, medical care and other basic needs. However, this project meant also in the area of social development to assist and support the vulnerable affected women with income generating skills to enable them to make a living for themselves and their families in Kampala Uganda.

All these vulnerable affected women do not have any perspective of the future after being victims of sexual violence, sexual exploitation and abuse, rape, torture, being forced in prostitution and deprivation from human rights. For this the Restoration and hope for Refugee came up with this unique sewing/ tailoring training skills to occupy, equip, help and support them with skills.

Restoration and hope for refugee History.

Restoration and Hope for Refugee (REHORE) is an independent, Non Governmental, developmental and charity, non-for-profit humanitarian Organization. Formed in July 2012 out of a desire to support, restore, empowering and bringing hope to refugee women and children affected by wars, sexual violence, sexual exploitation and abuse, victim survived of torture and deprived of human rights.

Our priority is to investing in people, and we are committed to giving assistance to those in need regardless of religion, race, nationality or gender. Our vision is to help the refugee Community especially women and children and the displaced people affected by wars, famine, disease, ignorance, violence, poverty or privates of human rights positively reshaped and restore.

We specifically focus to support the affected refugees, the poor and marginalized and the displaced people through our crosscutting programs by providing Education; healthcare; human right and protection advocacy; Community development programs; social assistance; and volunteer program.

Our being is to help the affected women and children refugees to integrate in the community and aspire for a better future, to support technically the feminine development initiative actions and projects. Also to network and partner with other organizations, NGOs (Non- Governmental Organizations), CBOs (Community Based Organizations), Associations and individuals to provide support effective intervention, training and assistance.

REHORE is more engaged in the services of supporting, restoring and bringing hope to refugees' women and children and our desire is that we address their suffering in appropriate and caring manner.

OUR VISION

REHORE vision is to help the refugee Community and displaced people affected by wars, famine, disease, ignorance, violence, poverty or privates of human rights positively reshaped and restore.

OUR MISSION

Restoration and Hope for Refugee works to restore hope to refugee and to improve the quality of life by empowering them, reshape the society through its crosscutting programs targeting disadvantaged women and Children but as well working hand in hand with other partners. We are a people development organization that seeks to create a positive change in the refugee community by building their capacities through leadership development, and community engagement to improve the livelihood conditions.

Identification of these Vulnerable affected women:

These vulnerable affected refugee women are from various background such as from poor family, abandoned by their husbands, HIV/ AIDS Positive rejected by their families, victims of human trafficking, those born out of rape, vulnerable immigrant, orphans, widows, single mothers.

REHORE works to support the vulnerable affected refugee from different countries like Democratic Republic of Congo, Rwanda, Burundi, Sudan, Eritrea, Ethiopia and many other refugees have been forced in prostitution, victims of sexual violence, rape, survived of torture, HIV/AIDS positive, forced labor, human trafficking, widows, orphans, and poor family. These continue to increase in number in refugee communities here in Kampala. Today there is no specific program aiming at training them especially to have skills and to support them.

Clientele

Our main clients are vulnerable affected refugee women from migrant families in Uganda and poor refugees' women in the hosting community who do not have any support and training skills such as widows, orphans, young girls who have been sexually abused and chassed out from home and any women who will be identified as vulnerable.

Today very few refugee women access the training skills; it is even difficult to estimate the statistic because this program does not exist for them. There are just some few women who are having sewing / tailoring skills after a help from some people of good will but the majority are just at home.

On the other hand, refugee women are facing different problems to access the Sewing/ Tailoring Training system in Uganda because many do not have money to pay the training fees as consequences they are demoted to low levels, and are just at home and other have never been to school.

PROBLEM ANALYSIS

Many women are victims of different violence then after are rejected by their husband, families, societies and communities. They have no where to stay, nothing to eat and can not access the basic needs.

Refugee women are more and more vulnerable because of their status, some have been victims of human trafficking, immigrant, victim of war etc and then they reached here in Kampala, and they have no one to support or help them. As consequence they have been for many times victims of the unlawful arrest, sexual abuse, defilement, forced labor, forced prostitution, sexual exploitation, accused of many crimes in the city, unwanted pregnancies, discrimination by the whole community, sexual transmitted diseases. Their fate is determined on the streets of Kampala day time and night where they are always called prostitutes, thieves at the end there are arrested, sentenced and sent to prison for many years.

We have noticed the problem of attitude of some people who have a negative perceptive of the Uganda systems and think refugees women are just for short term situation. They do not encourage the refugee women to access training skills, to go the school, to develop themselves. Many refugee women who are used in forced prostitution and other sexual practices most of them are due to the lack of support and the poor social lives in order to meet their basic needs and to pay the house rent.

It has been seen that when a refugee women want to integrate to the Uganda systems she is put in a lower level because of lack of skills, English language barrier for those who come from countries where English is not spoken, and end up being victims of different crimes such as sexual exploitations of refugee women, young girls and forced prostitution and drogue abuse.

ATTEMPT FOR SOLUTION

Uganda has more than 350,000 refugees from different countries; more than 28,000 refugees are living in Kampala the capital city. Having observed that these refugees and especially women face the first hardship lack of skills and others to real cope up with the realities of life in the new country of asylum, it was then requested that sewing and tailoring training skills is the very first step to follow and the ability to freely help them get a job for some is part of the solutions to their problems and others need to learn English language.

Today they are only less than 210 refugees who have access to sewing and tailoring program and this because of some limitations in centers operating these programmes to refugees.

This time there are refugees themselves under REHORE who are active in offering services to others and two among them are SAIDI PATIENCE and FURAHA who are instructors for sewing and tailoring training centre at REHORE

After analyzing the problem affecting refugees' women in Kampala RESTORATION AND HOPE FOR REFUGEE (REHORE) initiated sewing and tailoring training centre and caring programs for them. We have registered 125 vulnerable affected women and only 4 have already started training in sewing and tailoring skills.

This training is also a gesture to prepare them for real integration in Uganda community and other development programs. REHORE has looked for shelter for those who have no where to stay, we take to the hospital those who are sick, we provide special shelter to those who are sexual abuse and help them with food. We support the affected women by providing the basic needs.

Goals and Objectives

- To rehabilitate the victims by creating employment, supporting them and helping to use their talents and to prevent future violence by empowering refugees' women, young girls in Kampala by making discover and use their talent in sewing and tailoring skills.
- To help and support women economically, socially and morally.
- To promote Gender and to fight sexual abuse against refugees' women.
- To encourage the vulnerable affected refugee women to have skills by offering the sewing/tailoring training to them.
- To contribute to the development of refugee women and make them dream for a better future in life.
- To change the attitude of the authorities and make them understand that one among the best ways of protecting refugee women is to train them with skills.
- To promote the behavior change.
- To provide an environment this allows these refugees women to develop in all aspects of life.
- To break all several of tribalism, racialism, linguistic ideologies through sensitization, strategic mobilization and dialogue.
- To arise the standard of living conditions in beneficiaries.
- To develop a good working relationship with other nations, local and international association which break to provide similar interests. As well as government and non-government organizations.
- To lobby for the project, loans and grants or any other assistance from government, non government organizations, people, association within and outside the country.

PROJECT IMPLEMENTATION PLAN

Methodology

❖ Enrollment

There is ongoing information sessions about the necessity to women to be trained with sewing/ tailoring skills at our office and more campaigns will be done by REHORE members where they will be visiting place to place where vulnerable refugee women are living in Kampala. Still all religious leaders and refugee community leaders will be involved in this sensitization by doing it hand in hand with them. More information sessions will be organized in all places mostly visited by refugees and announcements will be made in public places. In this training program refugee women newly arrived will be also targeted and encouraged to attend sewing /tailoring training skills.

We believe that affected refugees women need to be identified, counseled, given a chance to achieve self development. Mobilization of the community by carrying out community meetings, to sensitize the women and the community so as to make them aware of importance of sewing and tailoring skills for the socio-economic development.

❖ Who will train these women?

Trainers are REHORE members who are taking care of these affected women and any other person who may be interested to offer services to them such as volunteers and interns. Trainers are volunteers who are giving out their efforts for the better life of these women.

❖ Where the Training will take place and duration of the training

The teaching is taking place at Nsambya Ave Maria in Kampala and other designated areas in Kampala as REHORE may see it necessary.

The sewing and tailoring training skills is for a period of six months where those students who complete are award with a certificate and encourage to continue put in practice all he have been taught.

Class time table

We have two class sessions which one starts at 08:00am and ends 12:00Pm and another on start at 2:00pm and ends at 5: 00Pm every Monday, Tuesday, Thursday, and Friday. The Training takes a period of six months to complete then new students can join.

❖ **Organizational arrangements for the program**

This sewing and tailoring training project is coordinated by the head of Community development /Social Assistance programs at REHORE in close consultation with the board of trustees of REHORE.

Logistic arrangements which are need

Seven Sewing machines

Two Trainers

Clothes materials

Three tables, six chairs and House rent

Three benches, electric iron box and scissors

❖ **Available resources**

One singer sewing machine, two plastic Chairs, chalks and 125 women, two trainers and the project Coordinator.

PROJECT MONITORING AND EVALUATION.

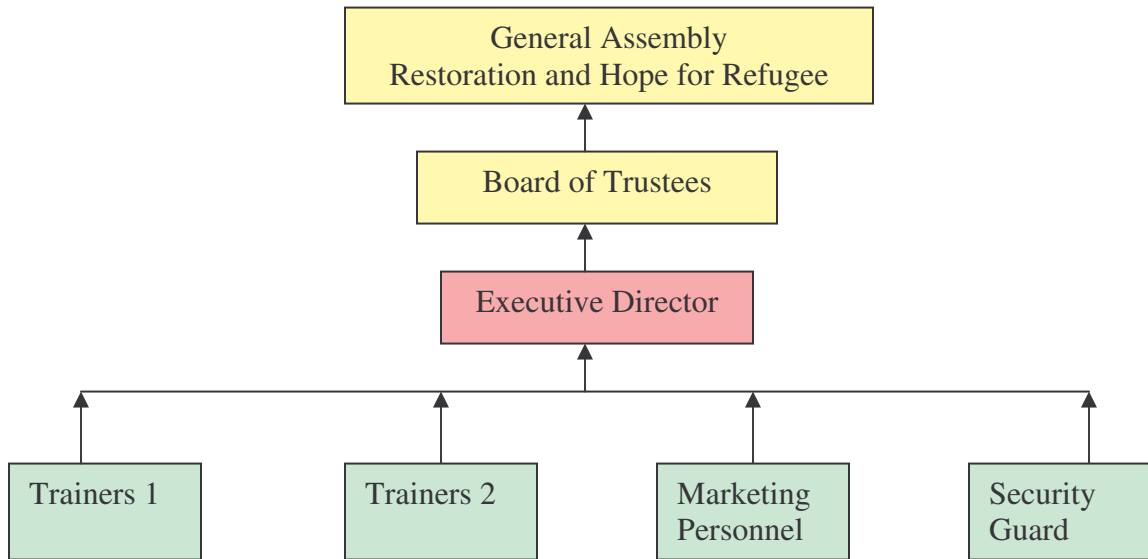
The board of trustees of REHORE will continuously evaluate and monitoring the progress of this project while the donor is also allowed to make visits to the project site and do his or her evaluation. It will be done by collecting data on the project implementation, project coverage and others. The data will focus on the following elements:

Needs of the target groups, the input, processes, and the implementation. We shall also have mid team effect monitoring that will be carried out by Board of Trustees.

REHORE may not afford the final evaluation costs due to lack of funds. Therefore the donor is encouraged to make his own procedures for monitoring and evaluation that best suit him.

MANAGEMENT OF THE PROJECT.

RESTORATION AND HOPE FOR REFUGEE is a well organized organization with trusted board of directors composed of six people to run this project.



Expected outcomes.

- To create employment, to reduce the number of vulnerable affected refugees women who are victims of sexual abuse, exploitation and violence, to fight poverty among refugee women, to restore their dignity and esteem in the society, to equip women with skills to become self supported, to destroy belief and myth which make women inferior to men and make women master of their lives.
- Self sustained of the beneficiaries who will be in position to creating human ways of surviving and having a source of income in their lives by exploiting their skills and talents. Many will discover different ways of earning a living and will learn a lot in career guidance, counseling and business management.
- This project is eradicate sewing/Tailoring skills in refugee women in Uganda because it is provide more activities which will employ more people and those who are the direct beneficiaries of the project finally will become self employed people by putting in practices their skills and talents as a result poverty will be challenged because even women who did not go to school will be equipped with skills.

BUDGET OF ALL COSTS NEEDED CONNECTING WITH THE REINFORCEMENT FOR THE SEWING/TAILORING TRAINING PROJECT.

Ref	Budget Line Item	Quality	Unity Costs in \$ USA	Total cost in \$ USA
1. EQUIPMENTS				
1.1	Sewing Machine Singer	4	50	200
1.2	Bordering Sewing Machine	1	400	400
1.3	Electrical Zigzag Sewing Machine.	1	500	500
1.4	Over locking Sewing Machine	1	735	735
1.5	Electrical Iron box	2	20	40
1.6	Benches	3	25	75
1.7	Chairs	6	10	60
1.8	Tables	3	50	150
1.9	Clothes Materials	-	150	150
1.10	Maintenance	-	200	200
SUB TITAL			2140	2510
2. HUMAN RESSOURCES				
2.1	Project Coordinator	Per month	75	450
2.2	Trainer 1	Training one women for six months	25	150
2.3	Trainer 2	Training one women for six months	25	150
2.4	Marketing Personnel	Per month	45	270
2.5	Security Guard	Per month	45	270
SUB TOTAL			215	1290
3. TRAINING ROOM				
3.1	House Rent	Per month	200	1200
SUB TOTAL			200	1200
GENERAL TOTAL			2555	5000

The Requested fund to reinforce this project is \$ USA 5000 FIVE THOUSAND USA DOLOR

At the moment we have no source of funding to full implement this project, therefore we are requesting for support and assistance.

We are requesting for a reinforcement fund that can allow us run this project for a period of six months after which period the project will meeting its costs.

At the moment the project is running through the REHORE members' contributions therefore we are requesting for the reinforcement funds after which the project will continue meeting its costs through the members contributions, selling the sewing clothes this will also help to get the training facilitation and operating costs such as maintenance, allowances, Rent etc.

At the beginning for a period of six months, this project is planning to employ Five full time workers, among whom one project coordinator, 2 trainers (facilitators), Marketing personnel and one Security Guard. All other people who will or may offer services to the project will do so on voluntary basic and may be paid allowances or wages based on services done also the availability of funds. All the above people will be overseen by the head of community development/ Social assistance programs and the board of trustees.





Achievements

The number of students has increased; the department has two teachers for the two session programs. The department has done every thing possible to maintain the program. The program has helped many refugees to get busy and therefore forget their hard experience they went through and to reduce their trauma.

Determination of instructors to offer a service to their fellow refugees at the cost of self sacrifice.

Challenges

Challenge in the Sewing/Tailoring class include poverty problems slow learners, and lack of support from the government, Non Governmental Organizations and community, little facilities and training materials.

-  Students present different interests sewing / tailoring training so it has been hard to get a homogeneous class.
-  Lack of sewing training machines, house rent for the training place, training facilities, chairs, tables, and books in Sewing and Tailoring training subjects
-  Lack of fund for the program, the program is funded through the contribution of REHORE members.
-  Few instructors and little allowances given to them and some time no allowances because we have no enough funds.