



# REMEDIAL MEMBRANES

Clear Waterproofing Membrane

# Contents

Product Introduction .....	3
About Us.....	4
Product Comparison.....	5
Applications:	
Leaky Shower Repair.....	7
Leaky Balcony Repair .....	9
Real Life Cost Study.....	10
Product Limitations .....	10
Case Studies .....	11
Summary and Order Process .....	13
Appendix: .....	14
Data Sheet	
Warranty	
Installation Guide Shower Repair	
Installation Guide Balcony Repair	
Customer Care Instructions	



# Product Introduction

Remedial Membranes is the only warranted remedial waterproofing membrane that provides a 4 year warranty to protect your wet area from leaking with future movement.

Founded by experienced and skilled tilers and waterproofers who have strived tirelessly to research, develop and deliver a super product, Remedial Membranes is a clear, water-based waterproofing membrane designed, tested and warranted for internal and external use on top of existing surfaces.

## **Complete Solution**

With Remedial Membranes' Clear Waterproofing Membrane, there is no need for costly replacement of an entire wet area to fix a leak in a shower or deck. Previously, when a homeowner found a shower or deck to be leaking, they would need to call a repair person to apply an epoxy grout or sealant to the existing surface to repair existing cracks and repair the leak source. While this is a sound method of repair of existing damage, it does not future-proof against damage from future structural movement. Remedial Membranes' Clear Waterproofing Membrane is a flexible membrane designed for application directly over existing surfaces, repairing existing leaks and preventing future leaks from substrate movement.

## **Affordable Price**

Remedial Membranes' Clear Waterproofing Membrane offers seamless repair of waterproofing issues at an affordable price and timeframe, without the need for drastic aesthetic change.

## **User Friendly**

Remedial Membranes' Clear Waterproofing Membrane is a seamless, flexible membrane that is applied directly over the top of existing surfaces, quickly and easily, guaranteed to prevent leaks due to future movement.

## **Innovative Applications**

Remedial Membranes' Clear Waterproofing Membrane product can be used to waterproof any compatible surface in wet areas. This innovation is ground-breaking as designers and installers are no longer bound by traditional "wet-area" surface materials. Remedial Membranes can be applied directly over the top of wallpaper, oak floors – making any surface waterproofed in your wet area. Due to its clear, innovative design, Remedial Membranes provides you with endless opportunities for design surfaces for your wet areas – you are limited only by your imagination.



# About Us

## **The Remedial Membrane Vision**

Remedial Membranes Corporate Body is made up of experienced tilers and waterproofers who have worked with existing remedial applications and felt that they do not offer an optimum solution for homeowners who want to protect their biggest asset.

Our search for a water-based, transparent waterproofing system took us around the globe. Thankfully, after testing many possibilities, we now have a superior quality, innovative product that ticks all of the boxes, changing the limitations on materials being used in wet areas.

We are excited to offer a product which breaks down the traditional barriers to wet area repair and design upgrade, providing an easy to use, affordable solution to

Remedial Membranes' innovative product is perfect for:

1. Homeowners wanting inexpensive design upgrade solutions for their wet areas, allowing them to upgrade wall and floor surfaces without replacing the entire bathroom;
2. Tradespersons wanting a reliable and warranted waterproofing solution for their installations;
3. Body corporates wanting an inexpensive, reliable and warranted leak repair solution for their internal and external managed assets.

# Product Comparison

Below is an overview of all of the options for remedial repair:

	PRODUCT TYPE	EASY TO INSTALL?	FLEXIBLE?	SUITABLE FOR REMEDIAL APPLICATION?
	<b>EPOXY GROUT</b> Made from Epoxy resins and filler powder, the grout is extremely hard, durable and nearly stain proof.	<b>YES/NO</b> Most installers find it harder to use than Cementitious grout.	<b>NO</b>	Over 95% of all leaks occur due to movement, epoxy grout is rigid and extremely hard. When movement occurs, cracks appear and leaks resume. <b>NO</b>
	<b>PENETRATING SEALANTS</b> Penetrating Sealants penetrate into the porous substrate to form a chemical barrier that shields against moisture penetration and chemicals.	<b>YES</b> Most commonly used outdoors, since they provide excellent protection against harsh exposure conditions.	<b>NO</b>	Penetrating Sealants soak into porous surfaces to reduce its ability to take on water but it does change the flexibility of the materials with over 95% of all leaks occurring due to movement in the inflexible product. <b>NO</b>
	<b>RIP OUT AND RE-DO</b> The complete removal of the existing surface back to the substrate and the replacement of all layers of construction to the finished tile.	<b>NO</b> Complete rip out and re-do is costly and takes a lot of time to co-ordinate and execute.	<b>YES</b>	Rip out and re-do is a complete replacement, not a remedial application. <b>NO</b>
<b>REMEDIAL MEMBRANES</b>	<b>WATERPROOFING MEMBRANE</b> A two part, clear, hybrid water-based aliphatic polyurethane waterproof membrane that cures to form a clear, tough, durable, flexible, abrasion and scratch resistant finish.	<b>YES</b> The liquid is easily applied over the tile or deck surface requiring repair.	<b>YES</b>	It is applied as a liquid membrane and once dry, transforms from a soft membrane to a fully cured, hardened membrane with flexibility. <b>YES</b>



### Table Comparison for Leaky Showers

	Product Warranted	Warranted for Movement	Repair Completed 24hrs	Approx. Price for Shower Repair (Inc. GST)
<b>REPAIR EPOXY GROUT</b>	YES	NO	YES	\$550+
<b>REPAIR SEALANT</b>	YES	NO	NO	\$550+
<b>RIP OUT AND RE-DO</b>	YES	YES	NO	\$2300+
<b>REMEDIAL MEMBRANES</b>	YES	YES	YES	\$660

### Table Comparison for Leaky Balcony

	Product Warranted	Warranted for Movement	Repair Completed 24hrs	
<b>REPAIR EPOXY GROUT</b>	YES	NO	YES	
<b>REPAIR SEALANT</b>	YES	NO	NO	
<b>RIP OUT AND RE-DO</b>	YES	YES	NO	
<b>REMEDIAL MEMBRANES</b>	YES	YES	YES	

# Applications

## LEAKY SHOWER REPAIR

### Why you should choose us

All showers leak due to movement over time. To ensure your problem does not come back, you need to repair the surface with a product that is flexible. Traditional Epoxy and Sealant products carry massive 10-25 year warranties, however none of these warranties cover the prevention of your surface from leaking, simply because, being rigid products, they cannot guarantee this.

Remedial Membranes was formed in response to tilers and waterproofers' demands for a flexible product that could deliver longer term, reliable results over traditional products on the market.

As a Clear Waterproofing Membrane, when applied to the shower floor and the lower walls, it creates a transparent shower tray which repairs existing leaks, and protects your shower from forming leaks in the future caused by movement. **Remedial Membranes is the only remedial repair product available on the Australian market that comes with a warranty against leaks in the future including those caused by movement.**

Internal applications have one important factor that needs to be taken into account – that is the safety of the product and health of home occupants. When waterproofing externally in fresh air, or on a new building site where there are no occupants residing, it is common to use Polyurethane or Epoxy-based waterproofing as the VOC and odour emitted from the membrane does not offend or cause a health hazard. However, with remedial applications, the situation is the opposite – most remedial applications are done with the home being occupied, drastically changing the products and materials that can be used for the safety of those occupants.

Clear Waterproofing Membrane (CWM) is a hybrid, water-based waterproofing membrane (not a sealant), made up of two parts:

1. CWM Part 1 - a water-based waterproofing membrane;
2. CWM Part 2 – an adhesion promoter.

The two parts combine to create a clear waterproofing membrane with a low odour that disappears when the product is cured.



## Shower Repair - Frequently Asked Questions

### ***Can I use it in the shower with hot water?***

Yes. Clear Waterproofing Membrane (CWM) has been engineered so as to not blush or turn which in the instance of hot water, so that the aesthetic appearance remains the same.

Internal applications differ from external applications due to the use of both hot and cold water, and considerably longer terms of wetness (E.g.: a shower in a family home can be used on average 4 times per day, in comparison to that of an external deck which may only receive rain once per week.). Therefore, it is important for remedial treatments to be able to withstand long periods of wetness, along with exposure hot and cold water without changing its aesthetic appearance.

### ***Is it rigid like epoxy grout, will it crack with movement?***

No. CWM is a clear, flexible membrane that sits on top of the applied area and is guaranteed to flex with this movement to prevent leaks occurring in the future.

All homes are built to move over time. They are built this way to last over time, however a problem occurs when a rigid product does not provide the same flexibility as the surrounding materials – this is when cracks appear, and although they may be small, when they appear in wet areas, they can cause significant damage. CWM's flexible construction is designed to move with the building, preventing future cracking.

### ***What about mould?***

Shower areas are typically exposed to less sunlight and frequent wetness, increasing the occurrence of mould. CWM includes an anti-mould and anti-fungal additive similar to silicone to reduce the occurrence of mould.

*Note: Please be advised that although we do supply the Clear Waterproofing Membrane product as "supply only" for DIY use, the CWM products is only warranted if installed by a Remedial Membranes Accredited Installer who has completed our training program.*



# LEAKY BALCONY REPAIR

## Why you should choose us

All balconies leak due to movement over time. To ensure your problem does not come back after repair, you need to repair the surface with a product that is flexible. Traditional Epoxy and Sealant products carry massive 10-25 year warranties, however none of these warranties cover the prevention of your surface from leaking, simply because, being rigid products, they cannot guarantee this.

Remedial Membranes' Clear Waterproofing Membrane is the answer to every builder's worst nightmare – leaky balconies. Remedial Membranes largest seller is for balcony repairs, and with so little in the way of repair options on the market, it's easy to see why. With the rip out and replacement costs running into the tens of thousands of dollars, Clear Waterproofing Membrane is a cost effective and efficient option, allowing for:

- Repair completed in a single day (following preparation);
- No aesthetic changes;
- No need to remove tiles.

The one major characteristic difference between external and internal applications is the presence of the sun. The sun has the ability to break down materials, it has varying and contrasting temperatures throughout the day and year, and emits harmful unseen UVA and UVB rays.

Wet areas in external building locations that are exposed to varying temperatures, are designed to expand and contract which over time leads to shrinkage, cracking and lifting, depending on how the area has been prepared and laid. This shrinking, cracking and lifting invariably leads to water damage.

Clear Waterproofing Membrane (CWM) has been engineered to keep its flexibility over time, and is warranted for 4 years, thereby protecting your building over time from future movement. It has also been developed with external use in mind, is UV stable with a low yellowing grade.

Water has the amazing ability to track from its source to where we find evidence of it, usually in the form of a wet or mould patch on the ceiling. This makes it increasingly difficult to diagnose the source of the leak with surety. CWM is applied over the entire area, which means you can be confident that seepage has been stopped and the damage has been repaired. CWM is completely clear, so is applied without detracting or changing the original scheme or décor, even though you might not be able to locate the source of the leak.

*Note: Please be advised that although we do supply the Clear Waterproofing Membrane product as "supply only" for DIY use, the CWM products is only warranted if installed by a Remedial Membranes Accredited Installer who has completed our training program.*



## Real Life Cost Study

A builder in Victoria approached us about the possibility of having six of his balconies repaired. Each balcony was between 8-12 square metres. He had already received a cost report that totaled the repair bill of the balconies to come between \$48,000 and \$72,000.

Our quote to repair the balconies was just \$10,600.

By removing the leaks on the balconies using Remedial Membranes CWM product, the builder is able to satisfy his building warranty requirements whilst satisfying his owners.

## Product Limitations

### **Water Ponding**

Remedial Membranes Clear Waterproofing Membrane (CWM) is designed to be installed on top of surfaces that have fall created in them to allow water to run off. If installed in situations with ponding, water surface may blush until a time where it is able to dry.

### **Trafficability**

CWM is tough and durable and can withstand general foot traffic. However as the membrane is flexible, it can be damaged by point loads, heavy weights, sharps, scuffing, dragging items across the surface and general excessive abuse. All care must be taken to protect against these (please refer to Customer Care Instructions).

### **Staining**

As we are unable to test for all manner of stains and sources of stains, as a precaution, given that the membrane is clear and is more susceptible to showing stains than a coloured coating, the membrane should be protected from possible sources of stains such as chemicals, dyes, leaves, wines etc. Spills should be immediately cleaned with a suitable detergent.

### **Desire for a Clear Finish**

As a clear finish is desired, some conventional methods for preparation, priming, reinforcing, and sealing of joints, gaps and corners are inappropriate. Their omission may render some applications where movement in joints, corners and cracks are excessive, substantial or beyond the capability of the membrane unsuitable.

### **Rising Damp**

CWM is not designed to prevent rising damp.



# Before and After Images

## Terracotta Balcony

BEFORE



AFTER



## Hotel Open Courtyard

BEFORE

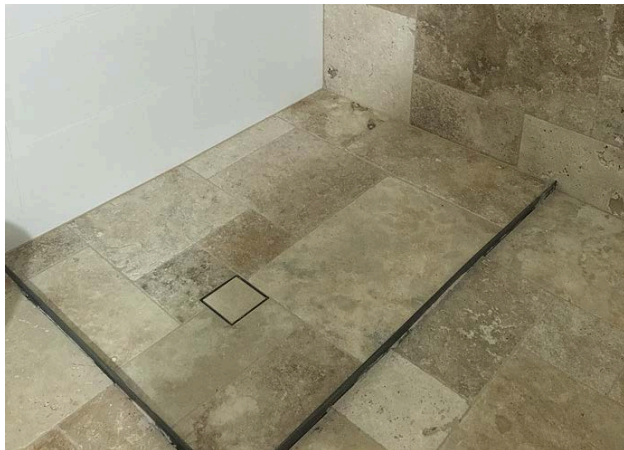


AFTER



## Travertine Shower

BEFORE



AFTER



## Newport Balcony

BEFORE



AFTER



For more images please refer to website via [www.remedialmembranes.com.au](http://www.remedialmembranes.com.au) or send us a request via email.

# Summary and Order Process

Thank you for taking the time to review our Supply and Install Product Proposal.

Please follow the below steps in order to proceed with your purchase of Clear Waterproofing Membrane:

## **Step 1: Request a Quote**

Quotes can be supplied in a multiple of different situations:

1. If your job is in a serviceable area of Remedial Membranes or one of their accredited installers someone may be able to come onsite and review you job;
2. Supply pictures of the surfaces and measurements and receive a firm quote for supply of membrane and a rough price for surface preparation;
3. Supply plans and receive a fixed price for waterproofing and a rough price for surface preparation.

## **Step 2: Quote Acceptance**

Should you wish to accept our quote, we require 50% deposit paid prior to commencement, with the remaining 50% due COD on the day of completion.

If your job in total is over \$30,000, we will accept three equal payments at the following milestones:

1. Upon quote acceptance;
2. After preparation is complete;
3. Upon project completion

*Please note: Remedial Membranes does not offer trading terms.*

## **Step 3: Scheduling**

We will discuss dates for job commencement, then once the job is scheduled in the only thing we have to work around is the weather.

## **Step 4: Surface Preparation**

All surfaces need to be repaired back to a sound state prior to waterproofing. This includes but is not limited to cleaning, re-grouting, cutting in expansion joints, gluing down loose tiles etc

## **Step 5: Surface Clean**

This is most likely an acid wash to ensure surface is free to all materials that would limit the membrane's ability to adhere to the surface.

## **Step 6: Waterproofing**

Clear MS Joint Adhesive is applied in conjunction with Clear Waterproofing Membrane and all coats are done in one day.



## Appendix

Please find to follow the following documents for your records:

Clear Waterproofing Membrane Datasheet

Clear Waterproofing Membrane Product Warranty Installation

Guide Shower Repair

Installation Guide Balcony Repair

Customer Care Instructions (After Use)





# CLEAR WATERPROOFING MEMBRANE (CWM)

## DESCRIPTION

Redial Membranes –Clear Waterproofing Membrane (CWM) is a two part clear, hybrid water based, aliphatic polyurethane waterproofing membrane / coating that cures to form a clear, tough, durable, flexible, trafficable, abrasion and anti-scratch resistant, waterproof membrane in a clear gloss finish. As a clear waterproofing it is able to be installed over leaking tiled surfaces like a shower or a deck to form a waterproof barrier without changing the original appearance. Remedial Membranes – Clear Waterproofing Solution is formulated for exposure to sunlight and is designed for applications where the original appearance of the substrate is desired such as tiled areas.

Remedial Membranes -CWM is therefore ideal for:

- the rectification of a leaking tiled area without removing tiles
- as a timber floor coating
- waterproofing porous materials to make wet area suitable

Remedial Membranes – CWM Membrane incorporates adhesion enhancers to enable it to bond to non-porous surfaces.

Compatibility testing is required prior to application.

## USES

Remedial Membranes - CWM, is a clear, trafficable waterproofing membrane / coating and has been formulated for:

1. It provides a trafficable waterproofing membrane over tiled areas. Water penetration problems can therefore be solved without removing the tiles.

**Suitable areas include:**

- Tiled balconies, courtyards, terraces etc
- Showers
- Wet areas.
- Waterproofing of terracotta tiles and pavers.

2. Top coating / sealing of timber floors.

3. Sealing sandstone surfaces.

## SUITABLE SURFACES

Suitable surfaces that have been properly cleaned and prepared

Surfaces include but are not limited to:

- tiles
- pavers
- terracotta tiles and pavers
- timber
- sandstone and many masonry substrates
- concrete and cementitious substrates.

## MIXING

CWM is a 2-Part waterproofing membrane for external onsite mixing. Each litre of CWM1 liquid requires a minimum of 100ml or 10% CMS2 added up to 250ml or 25% depending upon desired application thickness. Add CWM2 liquid slowly into CWM1 liquid while mechanically stirring to ensure proper mixing. Always add CWM2 to CWM1 pot volume will allow for this. Once mixed stand for 5 mins prior to use

## SPECIFICATION

The information contained in this product data sheet is typical but does not constitute a full specification as conditions and specific requirements may vary from project to project. The instructions should be considered as a minimum requirement but the applicator or contractor must use their skill, knowledge and experience to carry out additional works as may be necessary to meet the requirements of the project. Specification for specific projects should be sought from the Company in writing.

All surfaces must be pre tested to ensure compatibility prior to commencement of work.

## LIMITATIONS

**Water Ponding:** Remedial Membranes Clear Waterproofing Membrane (CWM) is designed to be installed on top of surfaces that have fall created in them to allow water run off.

If installed in situations with ponding, water surface may blush until a time where it is able to dry.

**Trafficability:** CWM is tough and durable and can withstand general foot traffic. However, as the membrane is flexible, it can be damaged by point loads, heavy weights, sharps, scuffing, dragging items across the surface and general excessive abuse and should be protected against these. It is not suitable for vehicular traffic.

**Staining:** As we are unable to test for all manner of stains and sources of stains, as a precaution given that the membrane is clear and is most likely more susceptible to showing stains than a coloured coating, the membrane should be protected from possible sources of stains such as chemicals, dyes, leaves, certain wines etc. Spills should be immediately cleaned with a suitable detergent.

**Desire for a clear finish:** As a clear finish is desired, some conventional methods for preparation, priming, reinforcing, and sealing of joints, gaps and corners are inappropriate and their omission may render some applications where movement in joints, corners and cracks are excessive, substantial or beyond the capability of the membrane unsuitable.

**Rising Damp:** CWM is not designed to prevent rising damp.

## BENEFITS AND ADVANTAGES

- It is a genuine waterproofing membrane, not simply a clear sealer.
- It can be applied to tiles and pavers.
- Warranted not to leak for 4 years (refer to warranty).
- Anti scratching and abrasion resistant.
- Excellent exterior durability and low yellowing.
- Good early hardness development.
- Good chemical and solvent resistance.
- Dries clear with a gloss finish.
- Trafficable.
- Can be used exposed to sunlight.
- Can be made slip resistant upon request.
- Solves waterproofing problems to tiles areas without removing tiles.
- Good bonding to most surfaces (testing is highly recommended).

## PRECAUTIONS IN USE

CWM Part 1 is a water-based product, has low VOC's and is not considered dangerous or hazardous according to the WorkSafe criteria. CMW2 is considered a Hazardous Chemical but a Non-dangerous please ensure the MSDS is referred to and good industrial practices such as wearing gloves and safety goggles against splashes should be observed along with an organic vapour respirator.

**Slippery Surface:** The finished membrane is not considered slippery but if residue is able to be built up, this may create a slippery surface. Note: There is a texture imprinted on the membrane depending on what applicator is used (brush or roller) and in addition to this, you can add a slip-resistant additive which can be supplied upon request. Refer to Application Instructions.

## PRIMING AND SURFACE PREPERATION

Good preparation is essential. Surfaces must be sound, stable, dry, clean and free of dust, loose, flaking, friable material and substances that may diminish adhesion. Subject to the limitations as stated above, the following preparation should be carried out.

### For tiled areas:

- Surfaces must be clean, dry and free of grease, grime, mould, fungi, dust, loose material and substances that may diminish adhesion.
- Surfaces should be thoroughly cleaned and flushed to remove detergent residues and allowed to dry.
- As far as possible restore the substrate to a sound condition.
- Cracked, loose or damaged grout should be replaced and fully cured.
- Cracks should be filled with a clear, MS Polymer Joint Adhesive.
- Existing silicone joints should be covered with clear, MS Polymer Joint Adhesive

### To seal timber or other substrates:

Refer to company specification

## APPLICATION

Apply by roller or brush. Do not apply if the ambient temperature or substrate temperature is below 10°C, likely to fall below 10°C or below the dew point temperature during the coatings drying and curing process. Do not apply the product when rain or inclement weather is imminent or expected including during the product's drying and curing process. Protect the product from rain, water damage, dust and falling items that may lodge in the wet membrane until it has fully cured.

### General Application

2 or 3 coats of CWM Membrane at the rate of 2m<sup>2</sup> - 3m<sup>2</sup> per litre per coat allowing each coat to complete dry before applying the next. The following coats should be applied as soon after the preceding coat is dry and best within 24 hours. The minimum dry film thickness of the membrane should be 0.125mm (125 micron) and 0.500mm (500 micron) 100mm up and down from wall and floor junctions and in areas where movement is expected such as existing cracks and joints.

The membrane will attain full strength and durability within 3 to 7 days and although can be subject to light, clean foot traffic, all furniture and other items should not be replaced until the end of the 7 days, providing customer care instructions are followed.

## COVERAGE

The stated average coverage rate may vary depending upon type, condition, porosity, texture of the surface and application technique. Coverage (usage) varies from 2m<sup>2</sup> - 3m<sup>2</sup> per litre per coat depending upon purpose for use. Refer to Application instructions. Porous surfaces will use more material.

## COLOURS

Clear.

## DRYING AND CURING

Drying and curing of the product is affected by type, dryness and porosity of the surface, temperature, humidity, ventilation, climate conditions and application technique and therefore drying and curing can only be given as a guide.

Per coat, on average at 25°C at 50 R.H. based on 100 micron wet film thickness:

Touch dry - 30 minutes

Re-coat - once touch dry (remove shoes).

Dry - < 24 hours.

Full Cure - 3 to 7 days.

Pot Life will be significantly lessened once part 1 and 2 are combined the pot life is dependent on the percentage of Part 2 mixed and will range between the following:

10% of Part 2 added will have a pot life of 5 days

25% of Part 2 added will have a pot life of 8 hrs

## STORAGE

Store in unopened and undamaged containers in a cool and dry areas. Product is non-flammable.

## CLEAN UP

Wet spills can be cleaned with water prior to drying after drying will not be able to be removed except with physical force.

## TILING, TOPPING OR TOP COATING

CWM left exposed not designed to be covered

## SAFTEY AND PRECAUTION

The product is water based and is not considered dangerous or hazardous according the criteria of WorkSafe Australia.

The use of gloves and eye protection is recommended along with an Organic Vapour Respirator. Use in well ventilated areas.

## FIRST AID

**Eye Contact:** Flush with copious quantities of water for at least 15 minutes. Seek medical attention.

**Swallowed:** Seek medical attention.

**Skin:** Remove contaminated clothing and wash skin with soap and warm water.

**Inhaled:** Remove from contaminated area. Apply air resuscitation if breathing is irregular or stopped. Seek Medical Attention

For full safety data refer to the products Material Safety Data Sheet. Observe precautions as per label.

### Conditions of Use and Disclaimer

The information contained in this data sheet is given in good faith based upon our knowledge and current information and does not imply warranty. The information is provided and the product sold on the basis that the product is used for its intended use and applied in a proper workman like manner in accordance with the instruction in this data sheet onto suitable and correctly prepared surfaces which shall remain sound, stable, free of structural defects, cracking, spalling concrete cancer, negative pressure, movement or other conditions that may affect the performance of the product. Deviations from application instructions may diminish or negate the performance of the product. Under no circumstances will the Company be liable for any loss, consequential or otherwise, arising from the use of the product. Liability is limited to the replacement of proven faulty product. Issued: 01/03/2015 Valid until superseded





## REMEDIAL MEMBRANES PRODUCT WARRANTY

### Product Warranty

A product warranty is applicable on all Remedial Membranes products for a period of 4 years from installation. Remedial Membrane warrant that their manufactured product is free from defects as well as being suitable for the purpose for which it is intended, that is as long as it has been applied in accordance with the Remedial Membrane's published literature.

### Product Limitation

Clear Waterproofing Membrane is designed with multiple aspects in mind. The product needs to be both trafficable and durable but also flexible enough to prevent leakage due to ongoing movement. As the elongation of a tiles is approx. 2% the product has been designed to have 50% elongation to be deemed a failure the product needs to fail within these parameters. Clear Waterproofing Membrane is used in conjunction with Soudal Joint adhesive which carries its own product warranty.

### Repair Application - Warranty

Remedial Membranes application on leaky areas such as the deck and showers mean that it is impossible to know the extent of the existing water damage under the substrate, limiting the warranty to product replacement.

### Application Warranty

All accredited installers warrant the installation of remedial membrane products in line with the requirements set out by the authority body.

### Product Replacement

Remedial Membranes covers that cost of repair or replacement of the product AND the cost of re-installation of the product if it fails in a 4 year period.



## NEW PRODUCT WARRANTY

### Remedial Membrane Product Warranty

The use of Remedial Membranes products do not remove the requirements for waterproofing required by Australian Standards and the National Building Code. The use of Remedial Membranes product over a new application is simply to be able to use a larger range of materials in wet areas that would otherwise be excluded.

Product compatibility tests must be conducted.

### Product Warranty

A product warranty is applicable on all Remedial Membranes products for a period of 4 years depending on the product. Remedial Membrane warrant that their manufactured product is free from defects as well as being suitable for the purpose for which it is intended, that is as long as it has been applied in accordance with the Remedial Membrane's published literature.

Remedial Membranes application on substrates that are not leaking and are compatible with the membrane warrant the repair or replacement of the product AND cost of re-installation of the product AND cost of replacement of any remedial coverings in between the Remedial Membranes cover and the underlying waterproofing.

### Application Warranty

All accredited installers warrant the installation of remedial membrane products in line with the requirements set out by the authority body.

### Product Replacement

Remedial Membranes covers that cost of repair or replacement of the product AND the cost of re-installation of the product for new installations.



## INSTALLATION GUIDE

### SHOWER REPAIR

Please ensure all Personal Protective Equipment is followed from the MSDS.

Equipment needed to complete application, including Part 1 and 2 Clear Waterproofing Membrane:



SOULDAL JOINT  
ADHESIVE



APPLICATOR GUN



STANLEY  
KNIFE



PAINT  
BRUSH



SCRAPER



If there is any missing grout, you may also require some matching grouts – we recommend Ardex.

---

**Step 1:** Check to see if there is any loose material and/or substances that may diminish adhesion like loose tiles or grout on the area you wish to apply Remedial Membranes Clear Waterproofing Membrane (CWM) to. If you can identify some loose tiles you can adhere these to the substrate with Soudal Joint Adhesive (if compatible with existing membrane). As this is a neutral cure adhesive it will not be required to fully cure prior to CWM's application.

If there is any missing grout, replace grout with as close a match as you can and allow curing. You can decrease its curing time with a heat gun.

Please note: if at any time you remove a tile and the substrate is soft to touch like a sponge, your water damage may require a specialist to investigate, as your water damage may have gone into the building materials and require additional repair.

**Step 2:** Remove all existing silicone, place Stanley knife on each side of silicone and pull down to remove silicone. Use scraper to remove excess silicone.



- Step 3:** Clean the entire surface to be free from grease, grime, mould, fungi and dust. It is absolutely necessary that the area be free from mould spores (general supermarket mould killers are not good enough). We recommend using a 1:1 ratio of chlorine and water to kill mould spores but a compatibility test should be done prior to application to ensure no negative reaction to possible sealants and grouts etc. Gloves, goggles & masks required for CWM application should be worn during cleaning with chlorine.
- Step 4:** Surfaces should be thoroughly cleaned and flushed to remove detergent residues and allowed to completely dry. **DO NOT APPLY CWM IF THE WHOLE SURFACE IS NOT COMPLETELY DRY.**
- Step 5:** Try and identify where the leak/s may be coming from, look for cracks in junctions between the wall and the floor and cracks through the floor where expansion might have occurred over time. Fill these cracks and all existing silicone joints with Soudal Joint Adhesive (this is not required to cure prior to CWM application). Choose from a range of colours to suit your application (i.e. generally if you have white tiles white adhesive is recommended).
- Step 6:** Externally Mix CWM2 liquid slowly into CWM1 liquid while mechanically stirring to ensure proper mixing. Always add CWM 2 to CWM1. Allow the mix to stand for 5 mins prior to use. Mix a minimum of 25% CWM Part 2 into CWM Part 1. Shower Tray Kit has been specifically measured to ensure a standard shower will achieve the desired 500micron thickness (.5mm).
- Step 7:** Apply the CWM in all the junctions between the wall and the floor with the paint brush as high as required, at least 100mm but preferably 300mm, and 100mm in from the floor perimeter.
- Step 8:** Apply CWM to the paint brush and move around the surface in one direction ensure complete coverage but do not leave puddles of the product.
- Please Note: If are going to add a non-slip product do it prior to the first coat curing.
- Step 9:** Ensure the first coat has completely cured and is fully transparent and ensure that there is no visible whitening especially in the junctions between wall and floor.
- Step 10:** Apply the second coat of CWM in all the junctions between the wall and the floor with the paint brush as high as previous coat, and 100mm in from the floor perimeter.
- Step 11:** Wash out all applicators with water immediately after use and dry ready for second application.
- Step 12:** Apply second coat in the opposite direction to the first coat.
- Step 13:** Leave to dry overnight with open window and good ventilation. Product will completely cure in seven (7) days.
- Step 14:** Always follow customer care instructions.



## INSTALLATION GUIDE

### BALCONY REPAIR

Please ensure all Personal Protective Equipment is followed from the MSDS.

Equipment needed to complete application, including Part 1 and 2 Clear Waterproofing Membrane:



SOULDAL JOINT  
ADHESIVE



APPLICATOR GUN



PAINT  
BRUSH



PAINT  
ROLLER



If there is any missing grout, you may also require some matching grouts – we recommend Ardex.

---

**Step 1:** Check to see if there is any loose material and/or substances that may weaken and diminish adhesion like loose tiles or grout on the area you wish to apply Remedial Membranes Clear Waterproofing Membrane (CWM) to.

If you can identify some loose tiles you can adhere these to the substrate with Soudal Joint Adhesive (if compatible with existing membrane) as this is a neutral cure adhesive it will not be required to fully cure prior to CWM's application.

If any grout is missing replace grout with as close a match as you can and allow to cure, you can decrease its curing time with a heat gun.

Please Note: Any time you remove a tile and the substrate is soft to touch like a sponge your water damage may require a specialist to investigate as your water damage may have gone into the building materials and require additional repair.

**Step 2:** Clean the entire surface to be free from grease, grime, mould, fungi and dust.



**Step 3:** Surfaces should be thoroughly cleaned and flushed to remove detergent residues and allowed to completely dry. **DO NOT APPLY CWM IF THE WHOLE SURFACE IS NOT COMPLETELY DRY.**

**Step 4:** Try and identify where the leak/s may be coming from, look for cracks in junctions between the wall and the floor and cracks through the floor where expansion might have occurred over time. Fill these cracks and all existing silicone joints with Soudal Joint Adhesive (this is not required to cure prior to CWM application).

**Step 5:** Check weather to ensure the forecast is for a minimum of two sunny days. If concerned about the weather cover with tarp.

**Step 6:** Externally Mix CWM2 liquid slowly into CWM1 liquid while mechanically stirring to ensure proper mixing. Always add CWM 2 to CWM1. Allow the mix to stand for 5 mins prior to use. Mix a minimum of 10% CWM Part 2 into CWM Part 1.

Dry film thickness should never drop below 125microns (.125mm) in areas 100mm directly adjacent to junctions between wall and floor and any area that is prone to movement like cracks and expansion joints product dry thickness should be increased to 500 microns (.5mm) and applied over the joint adhesive.

**Step 7:** Apply the CWM in all the junctions between the wall and the floor with the paint brush as high as required, but at least 100mm, and 100mm in from the floor perimeter.

Please Note: The underside of doorsills are a known weakness - apply Soudal Joint adhesive at the point where the wall meets the flashing and waterproofing to the Joint Adhesive and put flashing over.

If walls are weatherboard, remove if possible, the last weatherboard sheeting to apply product up to the underside and refix.

**Step 8:** Apply a large amount of CWM to the paint roller and move around the surface in one direction. Ensure complete coverage but do not leave puddles of the product.

Please Note: If you plan to add a non-slip product, do it prior to the first coat curing.

**Step 9:** Ensure the first coat has completely cured and is fully transparent and ensure that there is no visible whitening especially in the junctions between wall and floor.

**Step 10:** Apply the second coat of CWM in all the junctions between the wall and the floor with the paint brush as high as previous coat, and 100mm in from the floor perimeter.

**Step 11:** Apply second coat in the opposite direction to the first coat again. Please ensure you have adequate dry time prior to the temperature dropping at night as dew is water and cannot sit on the product until it has completely cured.

**Step 12:** Once completely transparent, it is now trafficable however DO NOT add pots or outdoor furniture for 7 days to allow complete curing of the product.

**Step 13:** Always follow customer care instructions.



## CUSTOMER CARE INSTRUCTIONS

Dear Customer,

We are happy that you have chosen to undertake the installation of Remedial Membranes Clear Waterproofing Membrane. Here are a few things you will need to know:

### PRIOR TO APPLICATION

Area must be dry and free from mould or mildew and soap scum prior to arrival of applicator. If you have opted to install the product yourself please ensure all documentation from Remedial Membranes is adhered to.

### AFTER APPLICATION

#### **Water Ponding:**

Remedial Membranes Clear Waterproofing Membrane (CWM) is designed to be installed on top of surfaces that have fall created in them to allow water to run off. If installed in situations with ponding, water surface may blush until a time where it is able to dry.

#### **Trafficability:**

Clear Waterproofing Membrane is tough and durable and can withstand general foot traffic. However, as the membrane is flexible, it can be damaged by point loads, heavy weights, sharps, scuffing, dragging items across the surface and general excessive abuse and should be protected against these. It is not suitable for vehicular traffic.

#### **Staining:**

As we are unable to test for all manner of stains and sources of stains, as a precaution given that the membrane is clear and is most likely more susceptible to showing stains than a coloured coating, the membrane should be protected from possible sources of stains such as chemicals, dyes, leaves, certain wines etc. Spills should be immediately cleaned with either 1:4 diluted bleach (1bleach: 4water) or a mild suitable detergent.

#### **Mould:**

Clear Waterproofing Membrane has an anti-mould additive similar to silicone, to aid in the prevention of common moulds. However with an innumerable amount of mould found both inside and outside we have supplied some additional cleaning instructions to further aid in the prevention of mould.

Areas that are free from a constant amount of natural sunlight through the day, like a shower in a bathroom that does not get natural light, should be wiped down dry after use.

Please do not hesitate to contact us if you have any further questions.

**Remedial Membranes**