



BOSCH

Remote Programming Software (RPS)

D5500CU



en

Installation Guide

Table of contents

1	Introduction	4
1.1	About documentation	4
2	Overview	5
3	Download first	6
4	Install RPS	7
4.1	Choose setup language, express install or advanced install	7
4.2	Express Install	10
4.3	Advanced Install	13
4.3.1	Choose local or network RPS database	13
4.3.2	Create new or select existing SQL instance	13
4.3.3	Create new SQL instance	13
4.3.4	Use existing SQL instance	14
4.3.5	Create new RPS database or use existing	14
4.3.6	Installation Summary	15
4.4	View the installation log file	18
5	Starting RPS the first time	19
5.1	Default Login	19
5.2	Configuration Assistant	20
5.3	Account Assistant	21
6	RPS upgrade, backup, and restore	24
6.1	Upgrade RPS	24
6.2	RPS database backup and restore	24
7	Maintenance	26
7.1	Set security levels by panel type for networked users	26
7.2	Modify, repair, or remove RPS	27
7.3	Switch from a client to a network installation	28
8	Appendix	30
8.1	RPS minimum system requirements	30
8.2	Network drive installation	30
8.3	Automatic RPS installation	31
8.3.1	Overview	31
8.3.2	Generate the RPSInstallation.ini file	31
8.3.3	Use the RPSInstallation.ini file	31
8.3.4	Customize the RPSInstallation.ini file	32

1 Introduction

Remote Programming Software (RPS) is an account management and control panel programming utility for Microsoft Windows operating systems. Operators can perform remote programming, account storage, remote control, and diagnostics for specific control panels.

1.1 About documentation

Copyright

This document is the intellectual property of Bosch Security Systems B.V. and is protected by copyright. All rights reserved.

Trademarks

All hardware and software product names used in this document are likely to be registered trademarks and must be treated accordingly.

Related documentation

The Release Notes provide information about RPS that became available after the release of this manual. The Release Notes list the control panels that are compatible with RPS. Refer to RPS Help for detailed instructions about how to program each of your control panel's parameters using Remote Programming Software.

2 Overview

Before you install RPS for the first time, review this document in its entirety to understand your installation options.

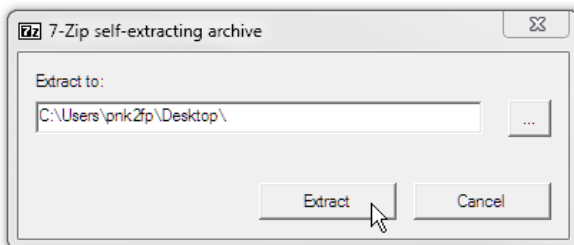
**Notice!****Windows admin rights required for RPS installation**

To install or upgrade RPS, you must have Windows admin rights on the target computer. Once RPS is installed or upgraded, RPS operators do not need administrative rights to use RPS.

3 Download first

Before installing RPS for the first time or upgrading to the latest version, download the RPS installation file first (RPS v6.xx.exe).

1. When the download is complete, copy the downloaded file (RPS_v6.xx.exe) to your desktop.
2. Double-click the file on your desktop to begin the extraction process.
3. Click **Extract**.



The extraction process creates a folder on your desktop, RPS-Installation-Files. Go to *Install RPS*, page 7 to install RPS.



4 Install RPS

You must download the latest version of RPS before you can begin the installation process. Follow the instructions in *Download first, page 6*.



Notice!

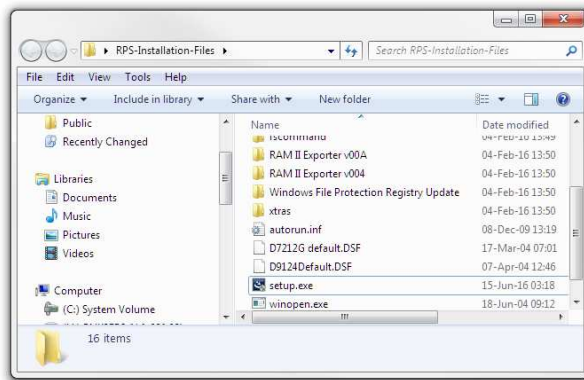
Windows 32 bit operating systems

Microsoft SQL 2017 is not compatible with 32-bit operating systems. If your Windows operating system is 32-bit, the RPS installation will automatically install Microsoft SQL 2012.

4.1 Choose setup language, express install or advanced install

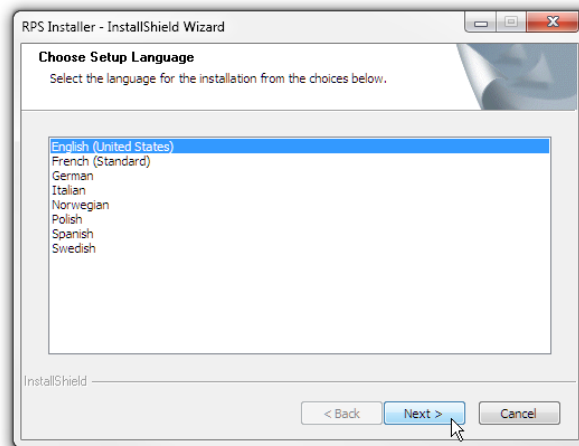
Start the installation process

1. Access the RPS-Installation-Files folder.
2. Right-click the **setup.exe** file and select **Run as Administrator**.



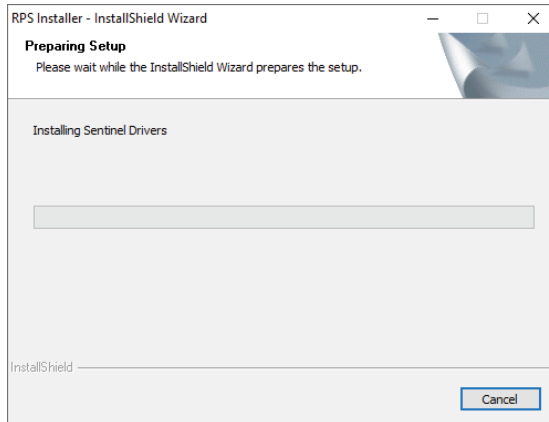
Choose the setup language

1. Choose a language for the RPS setup. The default is English.
2. Click **Next**.



Start setup process

Click **Next** to start the setup, which installs the required Sentinel Drivers.

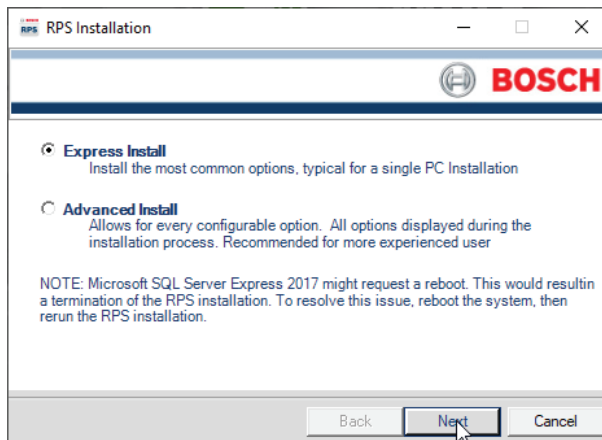


Choose express or advanced installation

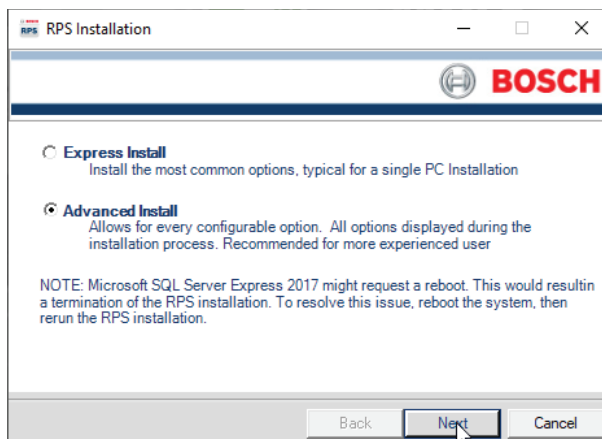
Choose the **Express Install** option if you are going to install RPS and the RPS database on the same computer in the default locations (folders).

Use the **Advanced Install** option when the RPS database will be shared among RPS workstations, or you want to install RPS and the database in folder locations other than the default folder locations.

To choose the Express Install, select **Express Install** and click **Next**. Go to *Express Install*, page 10.



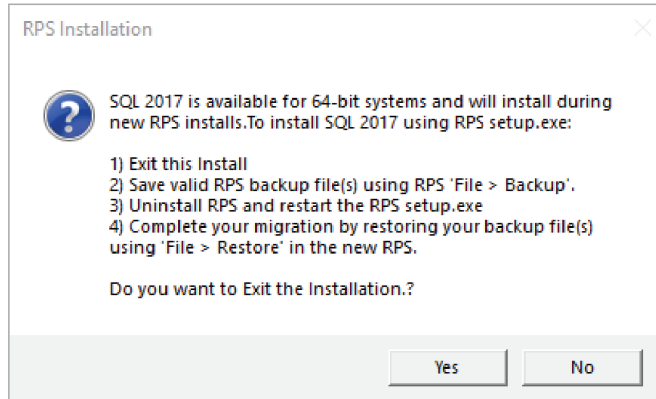
To choose Advanced Install, select **Advanced Install** and click **Next**. Go to *Advanced Install*, page 13.



Microsoft SQL versions support

If RPS is already installed with a SQL version prior to 2017 and your Windows version supports SQL 2017, there are 2 installation options:

- **Yes** - exits the RPS Installation to allow you to do the backup and uninstall steps. After successfully completing these steps, rerun the RPS Installation to install RPS. Go to *Modify, repair, or remove RPS, page 27* and *RPS database backup and restore, page 24*.
- **No** - continue the RPS Installation to upgrade RPS using the installed SQL version.



If your version of Windows does not support SQL 2017, the RPS Installation will automatically install SQL 2012 for installation or upgrade of RPS.



Notice!

Microsoft SQL might require restart

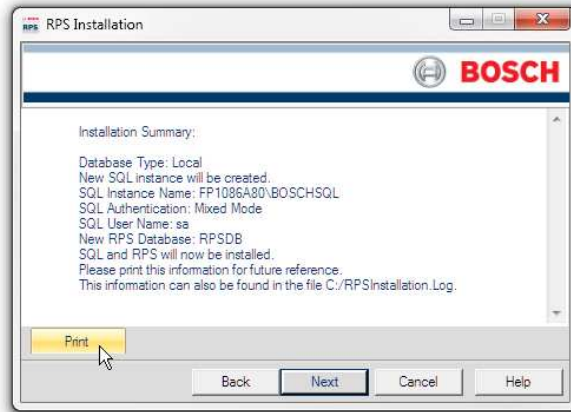
RPS uses Microsoft SQL Server to create and manage the RPS database. On some computers, the Microsoft SQL installation might require a computer restart. This interrupts the RPS installation. To resolve this issue, restart the computer, then rerun the RPS installation.

4.2 Express Install

Follow the instructions in each section below to complete the Express Install process.

Installation summary

The first window of the Express Install process shows a summary of how RPS will be installed. Click **Print** to print the summary for future reference. Click **Next** when you are ready to continue the installation process.



Choose a destination location

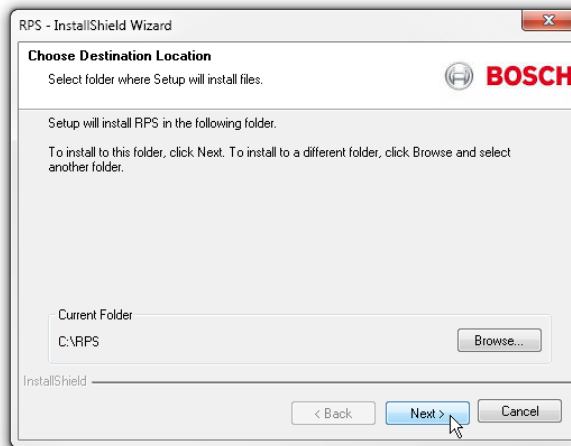
By default, the RPS setup process creates an RPS folder and installs RPS in it. Click **Next** to accept the default and continue, or click **Browse** to select another folder.



Notice!

No spaces in folder name

Do not select a folder or directory with a space in its name (for example, "Program Files")



Select control panels to support and unattended operation

In the Select Features window, choose the Bosch Control panels your RPS installation supports. The default is all Bosch control panels.

You can optionally choose to install the Unattended Operation feature.

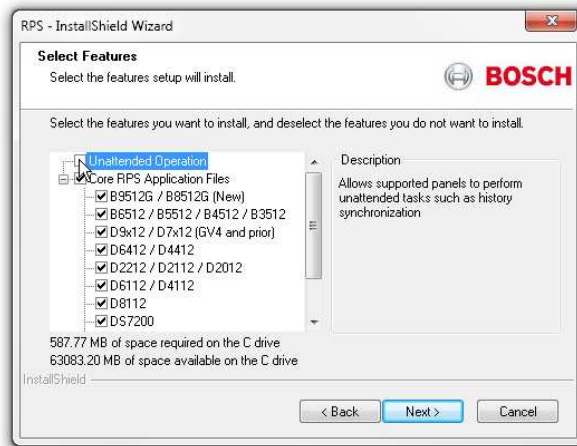


Notice!

Windows Home versions do not support Unattended Operation

Home versions of Microsoft's Windows operating systems do not support Unattended Operation.

Click **Next** to continue the installation process.



Select a program folder

By default, the RPS setup process creates a program folder for the Windows Start menu named "Bosch" (if one does not already exist), and adds RPS program icons to it. Click **Next** to accept the default and continue.

To create a new program folder for the Start menu with another name, enter the name in the **Program Folder** field, and click **Next** to continue.

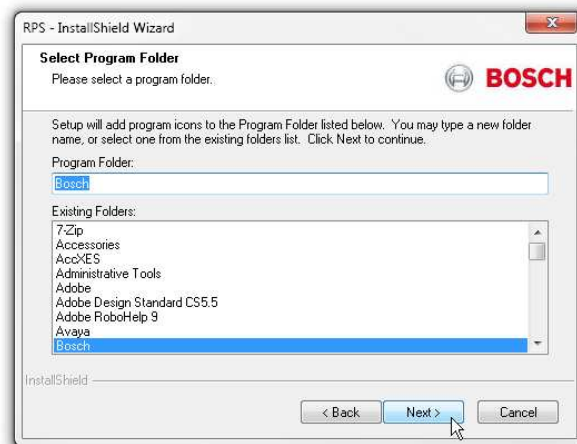
To choose an existing program folder, select one from the **Existing Folders** List, and click **Next** to continue.



Notice!

No spaces in folder name

Do not select a folder or directory with a space in its name (for example, "Program Files")



Start copying files

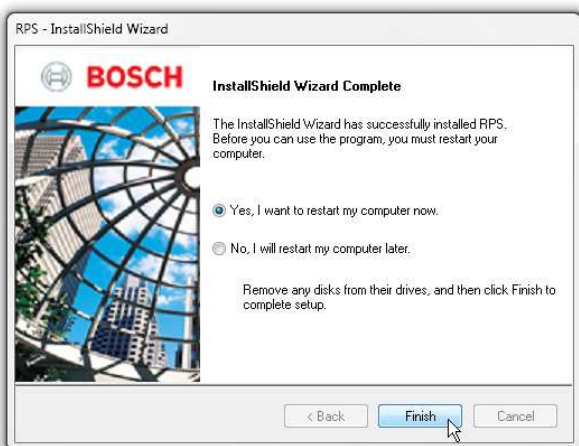
At this point of the installation, the RPS setup process has all the information needed to copy files to the selected locations. Click **Next** to continue, or click **Back** to make changes.



Installation complete

Click **Finish** to complete the RPS installation.

Restart your RPS computer and go to *Starting RPS the first time, page 19*.



4.3 Advanced Install

Follow the instructions in each section below to complete the Advanced Install process and select:

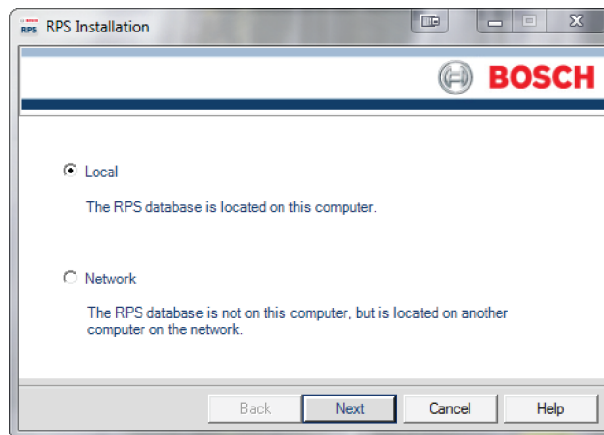
- local or network RPS database installation
- new or existing SQL instance
- new or existing database

4.3.1 Choose local or network RPS database

Select **Local** to install, or use an existing, RPS database on the same computer as RPS. You can choose to share the database with other computers later in the setup process.

Select **Network** to use an RPS database already installed on the network. You will choose the database later in the setup process.

Click **Next** to confirm your selection and continue.



4.3.2 Create new or select existing SQL instance

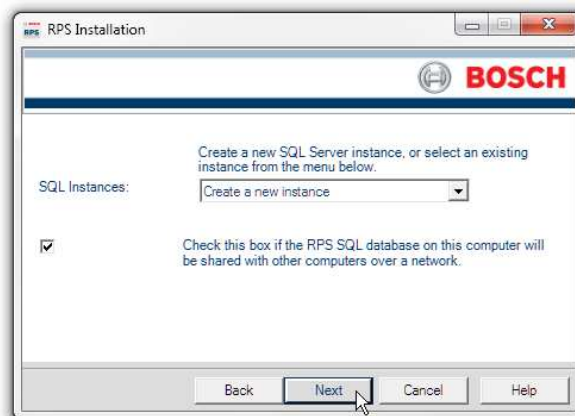
RPS uses an "instance" of Microsoft SQL Server to create and manage the RPS database.

If you are installing RPS for the first time, you need to create a new SQL instance for RPS. Go to *Create new SQL instance, page 13*.

To use an existing SQL instance (RPS database), go to *Use existing SQL instance, page 14*.

4.3.3 Create new SQL instance

Select the **Share Database** check box to share the RPS database on the same computer as this SQL instance with other computers, and automatically start the SQL browser service. This service allows other computers to access the local SQL instance.



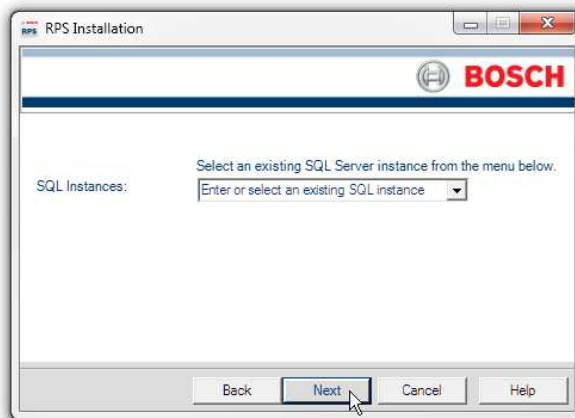
Click **Next** to create the new SQL instance:

1. **SQL Instance Name:** BOSCHSQL
If BOSCHSQL is already used, the new instance is named BOSCHSQLn, where n = a number. For example, BOSCHSQL1.
 2. **Authentication:** SQL Server Authentication
 3. **User Name:** sa
 4. **Password:** B@SCHRPSsql12345
- Click **Next** to create the new SQL instance. Go to *Create new RPS database or use existing*, page 14.

4.3.4

Use existing SQL instance

1. On the SQL Instance window, select the appropriate SQL instance from the drop-down list. Authentication of the selected SQL instance starts.



2. By default, Windows Authentication is used. If the authentication fails, you are prompted to use SQL Authentication.
To use SQL Authentication, check **SQL Authentication**, then enter your SQL user name (sa is the default) and password (B@SCHRPSsql12345 is the default).
3. Click **Next**. The RPS Database window opens. Go to *Create new RPS database or use existing*, page 14.

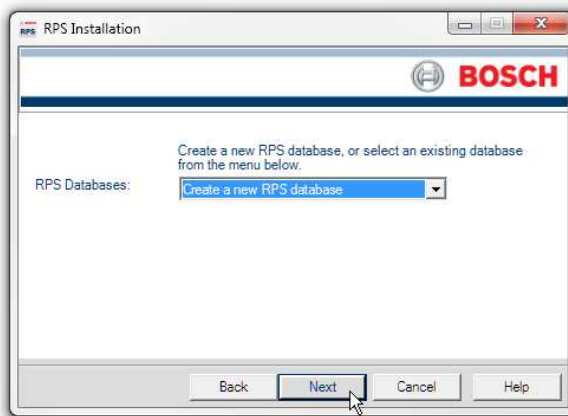
4.3.5

Create new RPS database or use existing

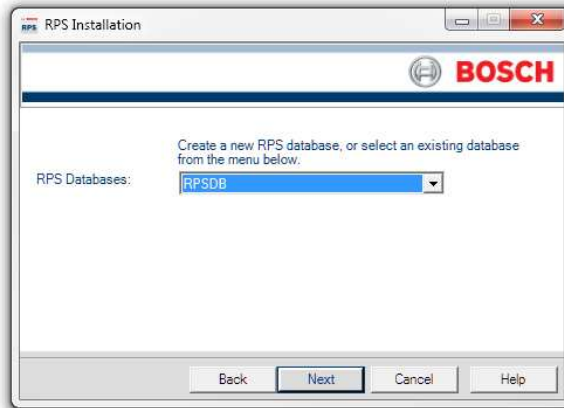
To create a new RPS database, select **Create** a new RPS database, then click **Next**.

The installation process creates a database named RPSDB.

If RPSDB is already used, the new database is named RPSDBn, where n = a number. For example, RPSDB1.



To use an existing database, select one from the RPS Databases drop-down list, then click **Next**.

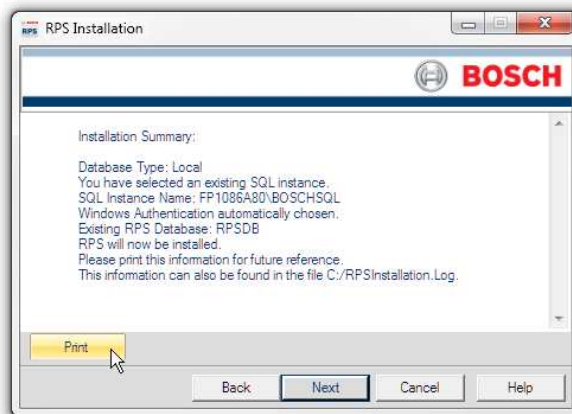


4.3.6

Installation Summary

The Installation Summary window shows how RPS will be installed.

- To change any settings, click **Back**.
- To print the installation summary for future reference, click **Print**.
- To continue the installation process, click **Next**.



Choose a destination location

By default, the RPS setup process creates an RPS folder and installs RPS in it.

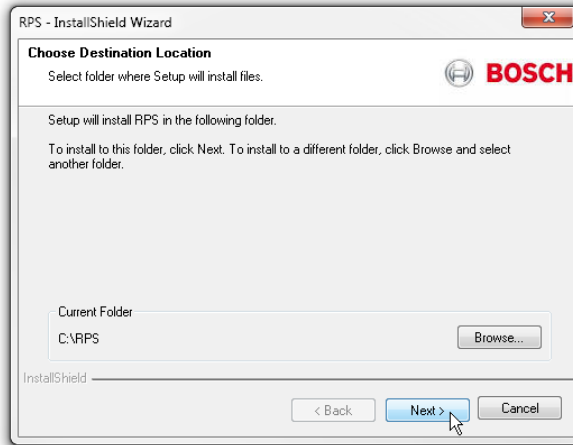
Click **Next** to accept the default and continue, or click **Browse** to select another folder.



Notice!

No spaces in folder name

Do not select a folder or directory with a space in its name (for example, "Program Files")



Select control panels to support and unattended operation

In the Select Features window, choose the Bosch Control panels your RPS installation supports. The default is all Bosch control panels.

You can optionally choose to install the Unattended Operation feature.

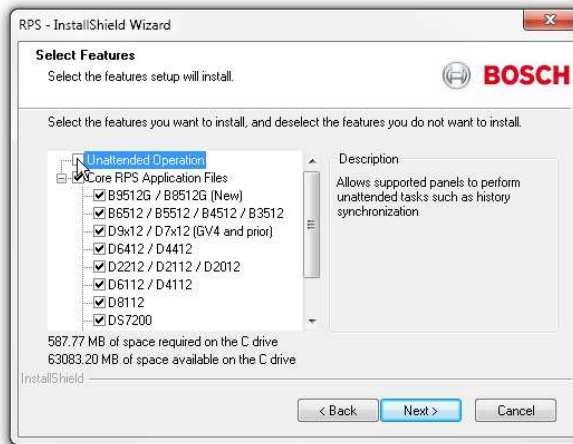


Notice!

Windows Home versions do not support Unattended Operation

Home versions of Microsoft's Windows operating systems do not support Unattended Operation.

Click **Next** to continue the installation process.



Select a program folder

By default, the RPS setup process creates a program folder for the Windows Start menu named "Bosch" (if one does not already exist), and adds RPS program icons to it. Click **Next** to accept the default and continue.

To create a new program folder for the Start menu with another name, enter the name in the **Program Folder** field, and click **Next** to continue.

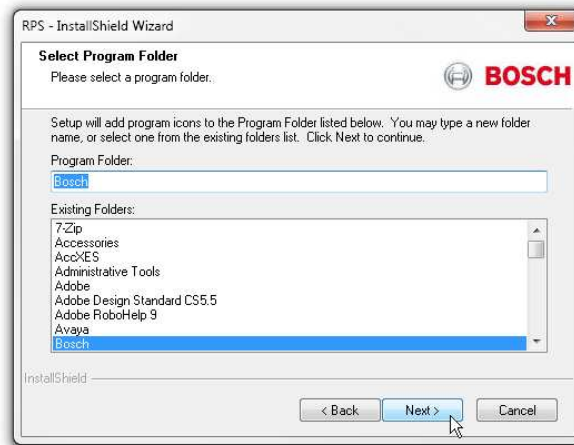
To choose an existing program folder, select one from the **Existing Folders** List, and click **Next** to continue.



Notice!

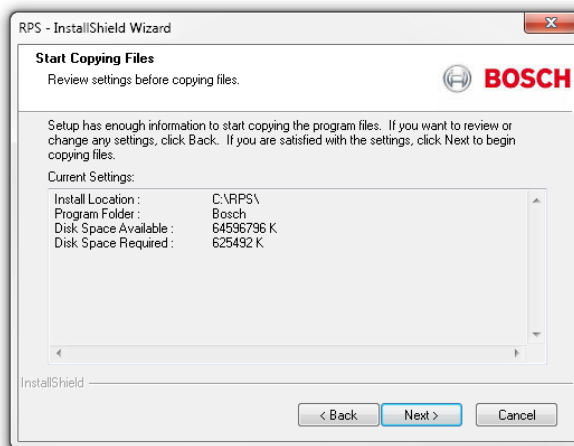
No spaces in folder name

Do not select a folder or directory with a space in its name (for example, "Program Files")



Start copying files

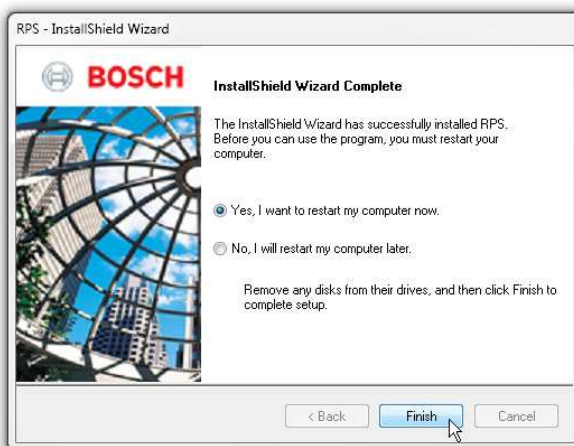
At this point of the installation, the RPS setup process has all the information needed to copy files to the selected locations. Click **Next** to continue, or click **Back** to make changes.



Installation complete

Click **Finish** to complete the RPS installation.

Restart your RPS computer and go to *Starting RPS the first time*, page 19.

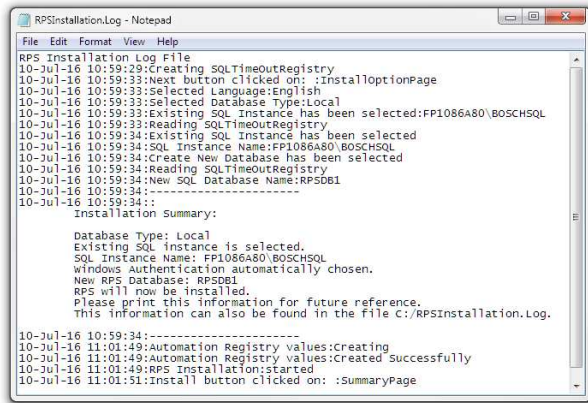


4.4 View the installation log file

During installation, RPS creates the **RPSInstallation.log** file, and logs the entire installation process in the file. The file is located in **X:\RPS\Log**s (“X” = the drive letter on the computer where RPS is installed).

Use the installation log file for troubleshooting purposes. The log file contains the following:

- All installation log entries with summary information
- Database file transfer information
- RPS database information



```
RPSInstallation.Log - Notepad
File Edit Format View Help
RPS Installation Log File
10-Jul-16 10:59:29:Creating SQLTimeOutRegistry
10-Jul-16 10:59:33:Next button clicked on: :InstallOptionPage
10-Jul-16 10:59:33:Selected Language:English
10-Jul-16 10:59:33:Selected Database Type:Local
10-Jul-16 10:59:33:Existing SQL Instance has been selected:FP1086A80\BOSCHSQL
10-Jul-16 10:59:33:Reading SQLTimeOutRegistry
10-Jul-16 10:59:34:Existing SQL Instance has been selected
10-Jul-16 10:59:34:SQL Instance Name:FP1086A80\BOSCHSQL
10-Jul-16 10:59:34:Create New Database has been selected
10-Jul-16 10:59:34:Reading SQLTimeOutRegistry
10-Jul-16 10:59:34:New SQL Database Name:RPSDB1
10-Jul-16 10:59:34:-----
10-Jul-16 10:59:34::
Installation Summary:
Database Type: Local
Existing SQL instance is selected.
SQL Instance Name: FP1086A80\BOSCHSQL
Windows Authentication automatically chosen.
New RPS Database: RPSDB1
RPS will now be installed.
Please print this information for future reference.
This information can also be found in the file c:\RPSInstallation.Log.
10-Jul-16 10:59:34:-----
10-Jul-16 11:01:49:Automation Registry values:creating
10-Jul-16 11:01:49:Automation Registry values:created Successfully
10-Jul-16 11:01:49:RPS Installation:started
10-Jul-16 11:01:51:Install button clicked on: :summaryPage
```

5 Starting RPS the first time

The sections that follow describe starting RPS for the first time for a new RPS installation. If you are starting RPS for the first time after upgrading to the latest version, enter your user name and password from the previous version to log in and begin using RPS

5.1 Default Login

Use the default user name and password for your first log in.

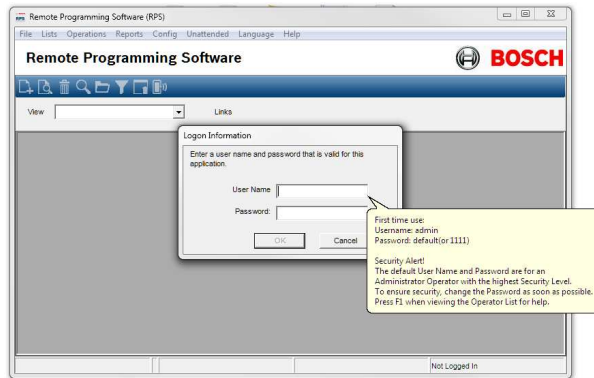
User Name: admin

Password : default (or 1111)

Notice!

Reduce security risk, change the default password

The default user name and password are for an administrator operator with the highest security level (15). Operators with security level 15 have access to all RPS data and functions. To ensure security, change the password for the administrator operator as soon as possible. From the Lists menu, click Operators, and then press F1 for help.

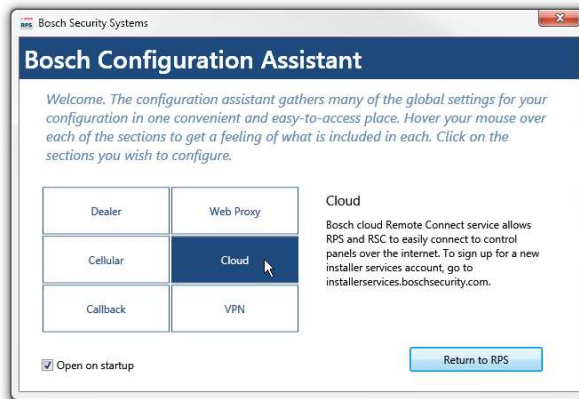


5.2 Configuration Assistant

When you log in to a new RPS installation for the first time, the Configuration Assistant automatically opens. The configuration assistant gathers the global RPS settings that configure RPS to support Bosch Cellular Services, Bosch Remote Connect (a Cloud-based Service), a Web Proxy, a VPN, and the RSC app for mobile devices.

- Hover your cursor over a section to learn about the settings that are included.
- Click the section to configure the settings.

When finished with the assistant, click **Return to RPS**.



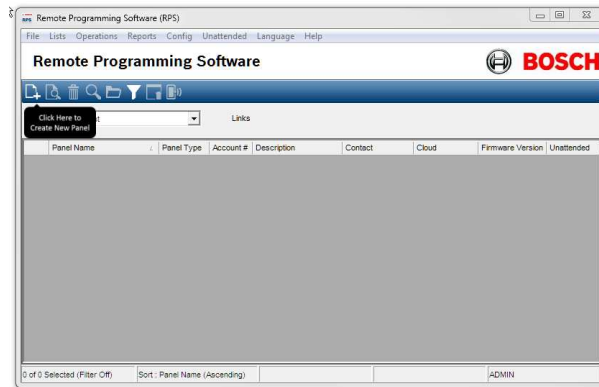
5.3 Account Assistant

The Account Assistant is the default view for creating and editing B Series control panel accounts for the administrator and new RPS operators.

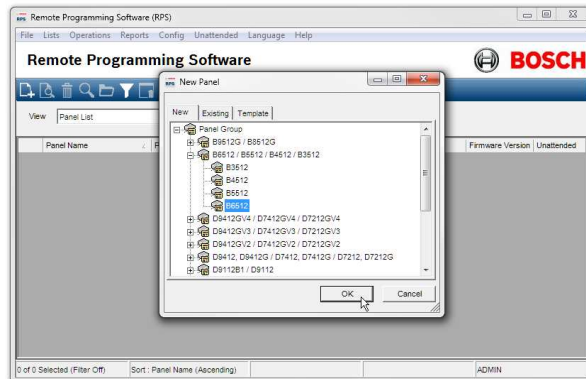
The Account Assistant combines key parameters from the Panel Data - View and the Panel View to help operators quickly create or edit B series panel accounts in a single view.

Create a new B Series control panel account

To start, click the new (panel) icon in the Panel List toolbar. If this is the first new account in the list, a help bubble directs you to the icon.

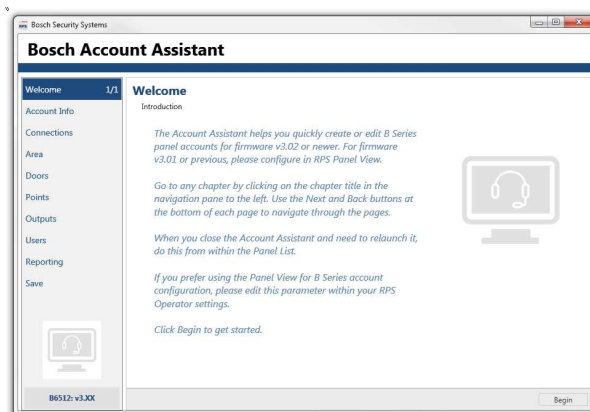


Select a B Series control panel from the B Series panel group (B6512, B5512, B4512, B3512). Click **OK**.



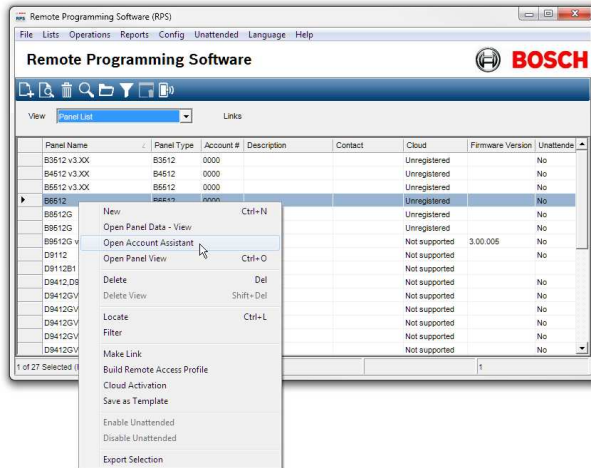
Work through the Account Assistant chapters

Complete all of the chapters to create a panel account for a basic control panel installation.



Edit accounts with the Account Assistant

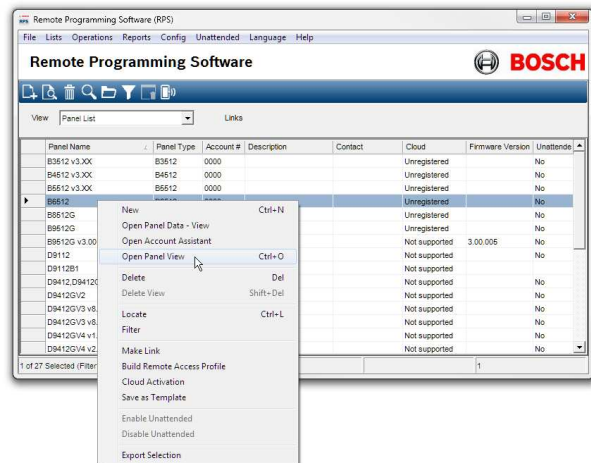
To edit a B Series control panel account with the Account Assistant, right-click on the account in the Panel List. Click **Open Account Assistant**.



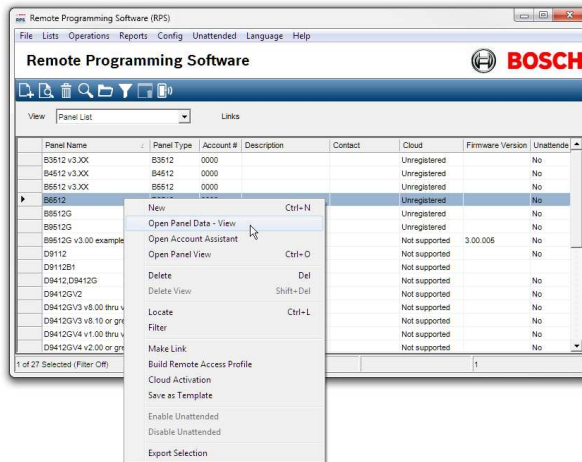
Switching to Panel View or Panel Data - View

The Account Assistant includes key parameters from both the Panel View and Panel Data - View for a basic control panel installation. More complex control panel installations will require configuration of parameters not included in the Account Assistant.

To access all control panel parameters, first close the Account Assistant, then right-click the panel account in the Panel List. Click **Open Panel View**.



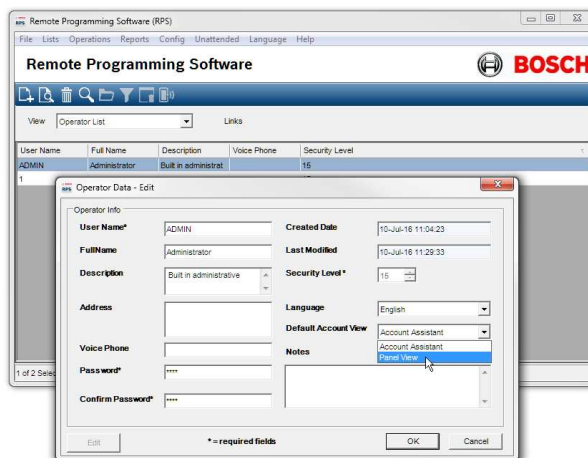
To access the panel data configuration for the panel account, first close the Account Assistant, then right-click the panel account in the Panel List. Click **Open Panel Data - View**.



Changing the default account view for operators

To change an operator's default account view for creating and editing new B Series control panel accounts from Account Assistant to Panel View:

1. Select the **Operator List**.
2. Right-click an operator to edit.
3. Click **Edit**.
4. From the Default Account View drop-down menu, select **Panel View**.
5. Click **OK**.



6 RPS upgrade, backup, and restore

Follow the instructions in this chapter to upgrade RPS, backup the RPS database, or restore the RPS database.

6.1 Upgrade RPS



Notice!

Backup the RPS database before upgrade

Before you begin the update process, make sure to backup your RPS database.

Follow these steps to upgrade to the latest version of RPS:

1. Backup the RPS database. Refer to *RPS database backup and restore, page 24* for instructions.
2. Download the latest version of RPS. Refer to *Download first, page 6* for instructions.
3. To complete the upgrade, refer to *Install RPS, page 7* for instructions.

6.2 RPS database backup and restore

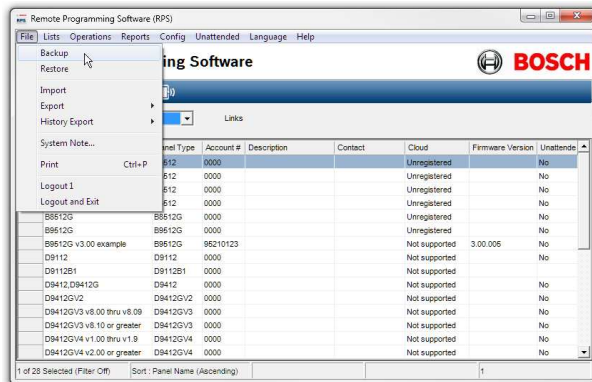
You should periodically backup your RPS database to reduce the risk of lost data due to equipment failure or data corruption.

You should backup your RPS database before upgrading to a newer version.

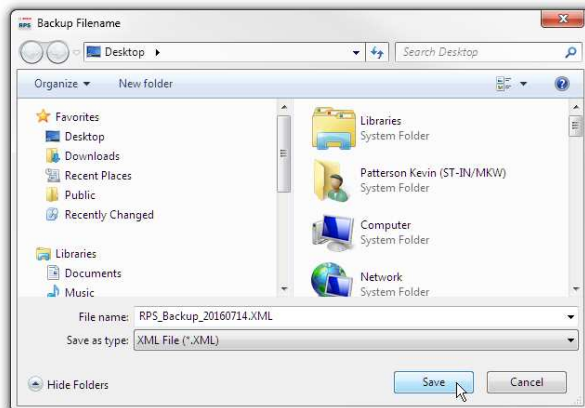
Backup

To back up the RPS database:

1. Click **File** to open the File menu.
2. From the File menu, click **Backup**.



3. Choose (or create) a folder and enter a file name for the backup file.



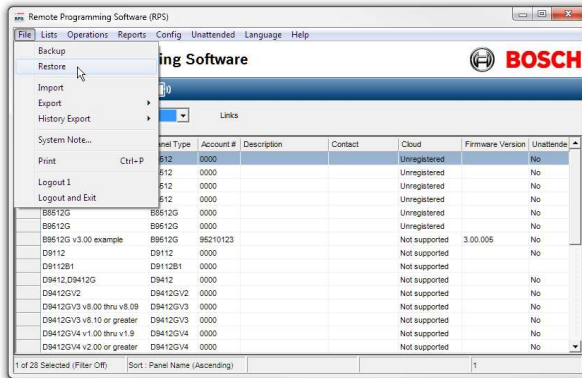
4. Click **Save** to finish the backup.



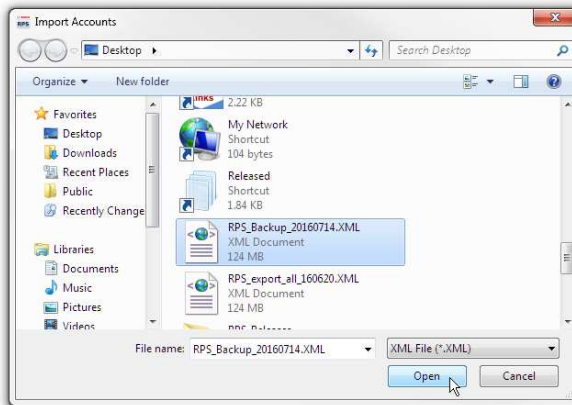
Restore

To restore an RPS database backup file:

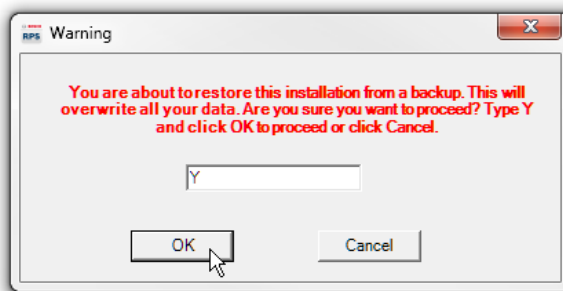
1. Click **File** to open the File menu.
2. From the File menu, click **Restore**.



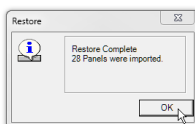
3. Choose the RPS database backup file to restore from. Click **Open**.



4. Review the warning. Enter **Y** and click **OK** to confirm that you want to overwrite the current RPS database with the data in the backup file.



5. The restore process is complete. RPS will now use the restored database.



7 Maintenance



Notice!

After system installation and any control panel programming, perform a complete system test. A complete system test includes testing the control panel, all devices, and communication destinations for proper operation.

7.1 Set security levels by panel type for networked users

If your company is using a database on a networked drive and you want to allow users to be able to set security levels for control panels, you must copy the control panel definition files to each workstation on the network. This preserves the security settings you have set for each control panel type on the individual workstations on the network.



Notice!

If these files are not copied to each workstation, users on other workstations can change data for control panel types that you restricted.

Transferring your security settings to other computers on the network:

1. From RPS, set the security levels for each control panel type on any one computer on the network. Only users with an authority level of 15 can perform this operation.
In RPS, refer to the RPS General Help for more information on setting security levels in RPS.



Notice!

Setting the security levels for a control panel type, sets the levels for all accounts for that control panel type (new and existing).

2. Use Windows Explorer to copy the appropriate control panel definition files (peg defs) to each computer on the network after you set the security level for each field in each panel type. To do this, open the RPS directory on the computer where you are currently working. Find the folder labeled **PegDefs**.
3. Use Windows Explorer to copy the PegDefs folder to each of the RPS directories on all workstations running RPS. Use the drag-and-drop feature in Windows to move the PegDefs folder to each computer on the network. Click and hold the PegDefs folder with the right mouse button and drag the folder to the RPS directory on the target workstation computer. Release the right mouse button. A dialog box opens and prompts if you want to **Move, Copy, Create a Shortcut** to the folder or **Cancel**.



Notice!

Make sure that you select **Copy**. Selecting **Move** moves the entire PegDefs folder from the current computer to the workstation computer. Click **Yes** if the **File Already Exists - Do you want to overwrite?** message shows.



Notice!

Moving the PegDefs folder prevents RPS from working on the current computer. If you accidentally move the PegDefs folder, return it to the RPS directory on the computer, and then recopy it to the workstation.

4. After Windows finishes the copy process, the workstation has the same security settings as the original computer. Repeat Step 3 for each workstation on the network.

**Notice!**

If you change the control panel security setting in the future, you must copy the new PegDefs files to each workstation again.

7.2 Modify, repair, or remove RPS

Modify RPS

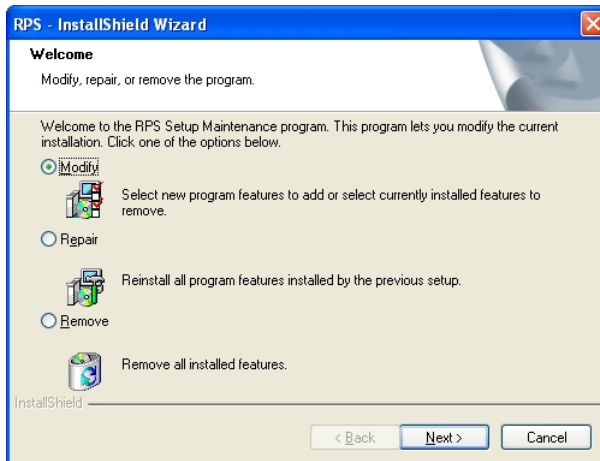
**Notice!**

To modify the current RPS installation, you must use the original installation files. If RPS was installed from the CD/DVD-ROM, you must use the CD/DVD-ROM.

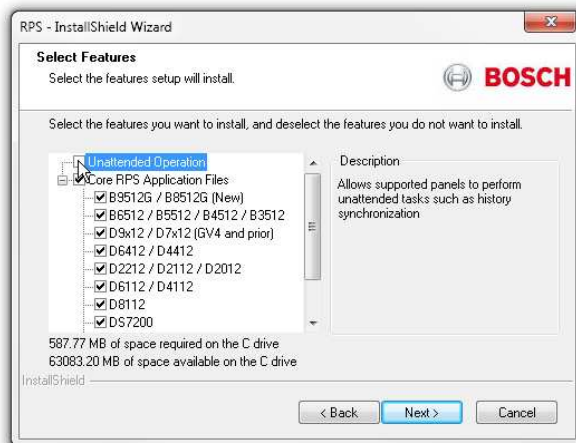
If RPS was installed from a folder containing the installation files, you must use the same folder in the location it resided when RPS was installed.

To add features, Unattended Operation for example, or remove installed features:

1. Open the Windows Add/Remove Programs dialog box.
2. Scroll to RPS and click it.
3. Click **Change**. The RPS Setup Maintenance dialog box opens.



4. Click **Modify**, and then click **Next**. The Select Features dialog box opens.



5. Select the check boxes for the features you want to install, or clear the check boxes for the features you want to remove.
6. Click **Next**. The selected features are either installed or uninstalled as selected.
7. When the Install Complete dialog box opens, click **Finish** to end the RPS Setup Maintenance process.

Repair RPS



Notice!

To repair the current RPS installation, you must use the original installation files. If RPS was installed from the CD/DVD-ROM, you must use the CD/DVD-ROM.

If RPS was installed from a folder containing the installation files, you must use the same folder in the location it resided at when RPS was installed.

Reinstalling all of the program features installed during the previous setup:

1. Select **Start > Settings > Control Panel > Add/Remove Programs**. The Add/Remove Programs dialog box opens.
2. Scroll down in the list until you see **RPS**. Click **RPS** to select it.
3. Click **Change/Remove**. The RPS Setup Maintenance dialog box opens.
4. Click **Repair**, and then click **Next**. A progress indicator dialog box opens. When the repair is complete, the Install Complete dialog box opens.
5. Click **Finish** to end the RPS Setup Maintenance process.

Remove RPS



Notice!

Only remove RPS if you do not intend on using RPS in the future.

If you are using an unreleased version of RPS, such as an alpha or beta version, you must uninstall (remove) RPS before installing a released version.

Removing RPS and all of its features:

1. Select **Start > Settings > Control Panel > Add/Remove Programs**. The Add/Remove Programs dialog box opens.
2. Scroll down in the list until you see **RPS**. Click **RPS** to select it.
3. Click **Change/Remove**. The RPS Setup Maintenance dialog box opens.
4. Click **Remove**, and then click **Next**.
5. When the Confirm Uninstall dialog opens, click **Yes**. A progress dialog box opens.
6. When the removal process is complete, restart the computer.

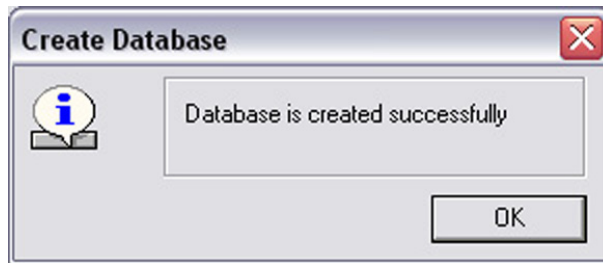
7.3

Switch from a client to a network installation

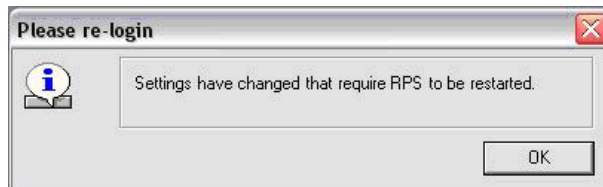
It can be advantageous to place your RPS database files on a network drive so that many workstations can access a single database.

Placing RPS database files on a network drive:

1. Start RPS, and log on when the RPS Logon Information dialog box opens.
2. Select **Config > System**. The System Configuration dialog box opens with the **Work Station Specific** tab open and **Database Settings** highlighted.
3. In the **Select or Enter SQL Server name** field, select the name of the network SQL Server.
4. If the SQL Server database already exists, enter the **SQL Server Name**, **SQL Database Name**, **User Name**, and **Password**, then click **OK**. If the SQL Server database does not already exist, enter the **SQL Server Name** and the desired **SQL Database Name**, **User Name** and **Password** for the database, then click **Create Database**. The **Database Created Successfully** dialog box opens.



5. Click **OK**. The Please re-login dialog box opens.



6. Click **OK** to restart RPS.

When the database is shared on a network drive, two or more operators can access a single account. When an operator attempts to access an account that is already open by another operator (for example, one that has a different user name), a Panel Already Open dialog box appears, indicating that the account is already opened for editing by another operator (the operator's log-in name shows in the message box). The operator opening a second instance of the database can view the contents of the account, but cannot edit any of the information in the account.



Notice!

If an operator logs on to two different terminals with the same user name and accesses the same account from both terminals, RPS prompts the operator at the second terminal to either override the lock and allow edits, or open the account in View Only mode.

Do not log on to RPS using the same user name on multiple computers.

8

Appendix

8.1

RPS minimum system requirements

System requirements	
Operating System	Windows 8, Windows 8.1, Windows 10, Windows Server 2008, Windows Server 2012 R2
SQL Express	2012 SP2 with Hotfix patch KB3205054 installed for 32-bit systems 2017 14.0.1000.169 installed for 64-bit systems RPS supports 2012 SP2, SQL2014, SQL2016, SQL 2017 and SQL 2019
Processor type	x64 Processor: AMD Opteron, AMD Athlon 64, Intel Xeon with Intel EM64T support, Intel Pentium IV with EM64T support x86 Processor: Pentium III-compatible processor or faster
Processor speed	Minimum: x86 Processor: 1.0 GHz x64 Processor: 1.4 GHz Recommended: 2.0 GHz or faster
RAM	Minimum: 4 GB Recommended: 8 GB (increase as database size increases for optimal performance)
Hard disk	Available space: x86 Processor: 16 GB x64 Processor: 20 GB
Monitor	Minimum resolution: 1024 x 728

**Notice!**

These minimum system requirements are based on installing RPS or RPS-LITE with SQL Express on the same computer. For any other configurations of OS and SQL, reference specific requirements on Microsoft's website:
<http://windows.microsoft.com>

**Notice!****Microsoft Operating System Support**

As of January 14, 2020, Microsoft stopped supporting Windows 7. As of July 13, 2010, Microsoft stopped supporting Windows 2000. As of April 8, 2014, Microsoft stopped supporting Windows XP. As a result, Bosch Security Systems, Inc. no longer supports the operation of RPS 5.13 or later on Windows 7, Windows 2000 or Windows XP operating systems.

8.2

Network drive installation

- If you copy the contents of the RPS CD/DVD-ROM to a networked drive, the drive must be mapped to a drive letter in order for RPS to properly install on local computers connected to the networked drive.

- RPS cannot install from a networked drive that uses the Universal Naming Convention (UNC).
- If you copy the contents of the RPS CD/DVD-ROM to a local or network drive, you must change the Read/Write permission on the License folder.

8.3 Automatic RPS installation

8.3.1 Overview

When installing or upgrading to version 5.12 or later, RPS creates a file called RPSInstallation.ini. This file contains the SQL database settings that are selected when installing or upgrading RPS.

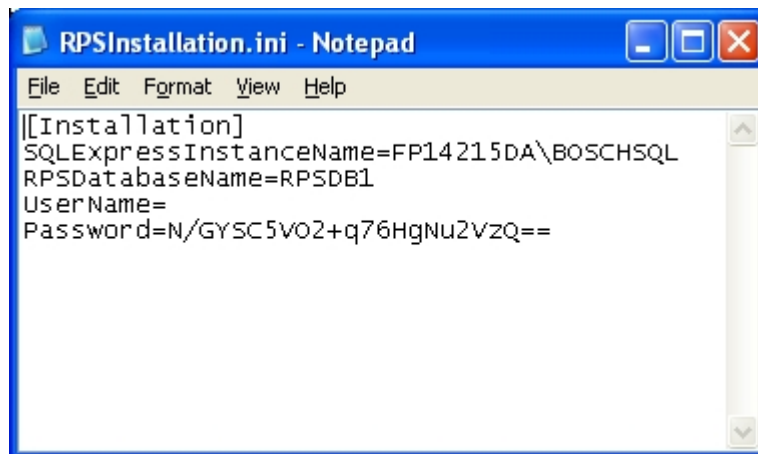
After the first installation or upgrade of RPS, you can run the RPSInstallation.ini file to complete subsequent installations or upgrades that are identical to the first installation or upgrade.

8.3.2 Generate the RPSInstallation.ini file

To generate the RPSInstallation.ini file, you must install or upgrade to version 5.12 or later. During the installation or upgrade process, RPS collects the selected settings for the SQL database and saves them to X:\RPSInstallation.ini ("X" = the drive letter assigned to the computer's local drive).

The RPSInstallation.ini file contains these settings:

- SQLExpressInstanceName: name of the selected SQL Express instance name.
- RPSDatabaseName: name of the selected RPS database.
- UserName: user name required for SQL authentication. By default, RPS uses Windows authentication. This setting is not required for Windows authentication.
- Password: password required for SQL authentication. By default, RPS uses Windows authentication. This entry is not required for Windows authentication. This entry is encrypted.



8.3.3 Use the RPSInstallation.ini file

Using the RPSInstallation.ini file to install RPS with the same SQL database settings as the first installation:

1. Copy the following files to a blank CD-ROM:
 - All files from the master RPS CD-ROM
 - The RPSInstallation.ini file from the computer where the first installation or upgrade was performed (X:\RPSInstallation.ini, where "X" = the drive letter assigned to the computer's local drive).

All of the required installation files, including the RPSInstaller.exe file, reside in the fscommand folder at the root level of the RPS CD-ROM. The RPSInstallation.ini file must reside in this folder as well.

2. Insert the copied RPS CD-ROM into the next computer that requires an installation or upgrade of RPS.
RPS installs the SQL database according to the settings in the RPSInstallation.ini file, and then installs RPS. When the installation process is complete, RPS connects to the SQL database.
3. Repeat Step 2 for all remaining computers that require an RPS installation or upgrade.

8.3.4

Customize the RPSInstallation.ini file

If the RPS installation requires that the SQL database is installed locally on each computer (not shared), you can customize the RPSInstallation.ini file.

To customize the RPSInstallation.ini file:

1. Create a text file (.txt) in a text editor such as Notepad.
2. Copy the following lines in the order as shown below:
 - [Installation]
 - NewSQLInstance=
 - NewRPSDatabase=
3. Save the file.
Use RPSInstallation for the filename. Change the file extension from .txt to .ini.
4. Close the file.
5. Copy the custom .ini file along with all of the files on the master RPS CD-ROM to a blank CD-ROM.
All of the required installation files, including the RPSInstaller.exe file, reside in the fscommand folder at the root level of the RPS CD-ROM. The RPSInstallation.ini file must reside in this folder as well.
6. Install RPS onto each computer that requires an installation or upgrade.
RPS creates unique SQL instance names and RPS database names on each computer.



Bosch Security Systems B.V.

Torenallee 49

5617 BA Eindhoven

Netherlands

www.boschsecurity.com

© Bosch Security Systems B.V., 2020