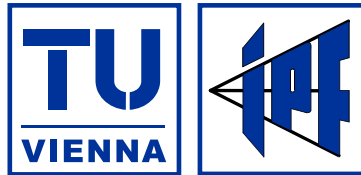


# **Remote Sensing of Critical Hydrologic Parameters: Soil Moisture, Topography and Vegetation**

**Klaus Scipal & Wolfgang Wagner**



**Vienna University of Technology  
Institute of Photogrammetry and Remote Sensing**

# Introduction

- **Content**

- No „edge cutting“ technologies, but realistic
- Operational products, proven in pilot applications
- Compare competing technologies

- **Remote Sensing (as understood here)**

- is not just about land cover classification using statistical image processing approaches
- should be better regarded as a suite of techniques that aim to make physical measurements of geophysical parameters/processes

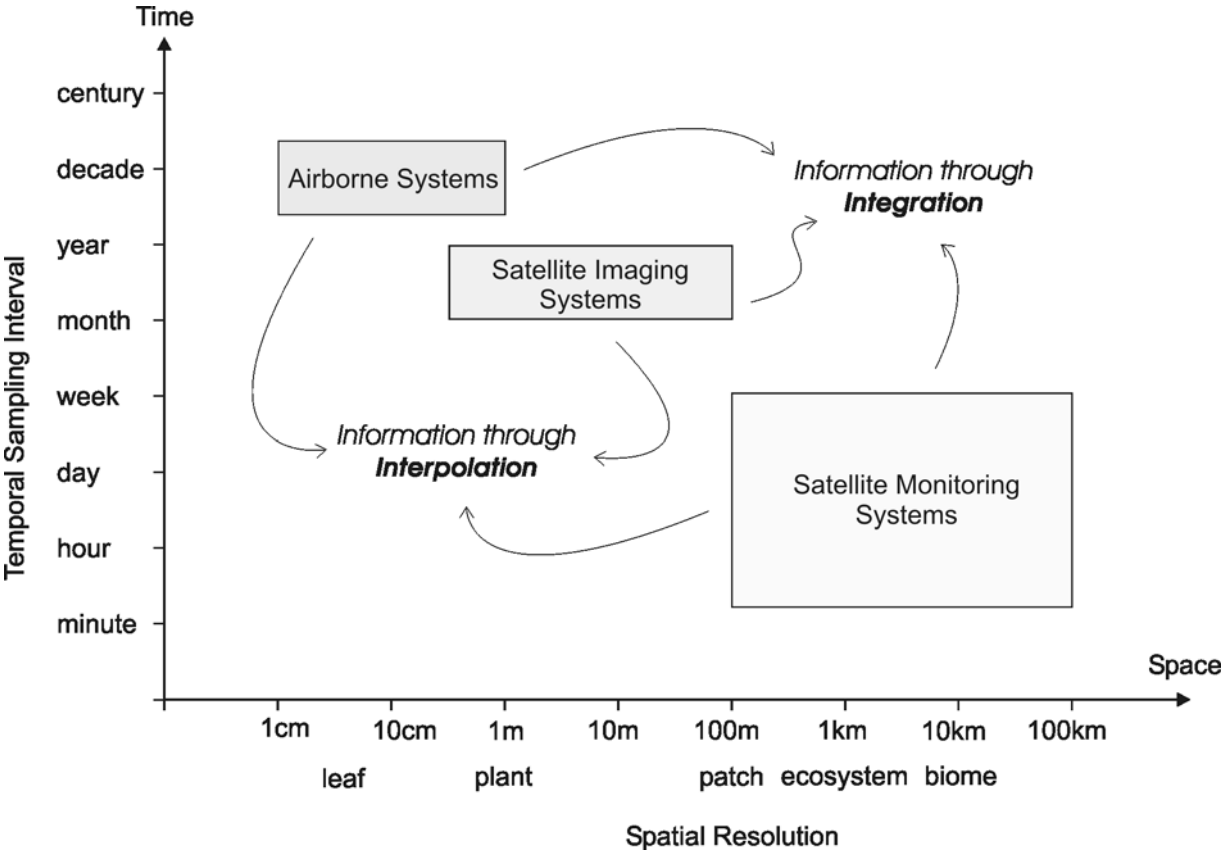
- **Active Remote Sensing Products**

- Topography
- Vegetation
- Soil Moisture

# Scaling Issues

- **The term “scale” refers to a**
  - characteristic length
  - characteristic time
- **The concept of scale can be applied to**
  - **Process** = typical time and length scales at which a process takes place
  - **Measurement** = spatial and temporal sampling characteristics of the sensor system
  - **Model** = Mathematical/physical description of a process
- **Ideally: Process = Measurement = Model Scale**
- **Remote sensing offers a large suit of sensors**
  - Scaling issues must be understood in order to make appropriate use of sensors

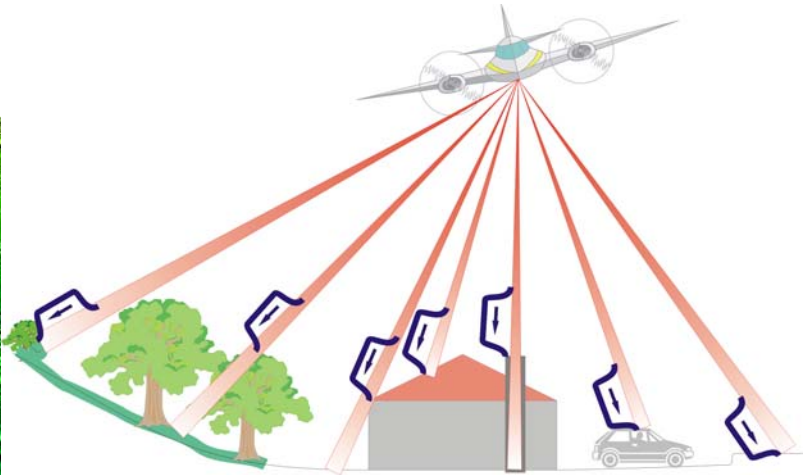
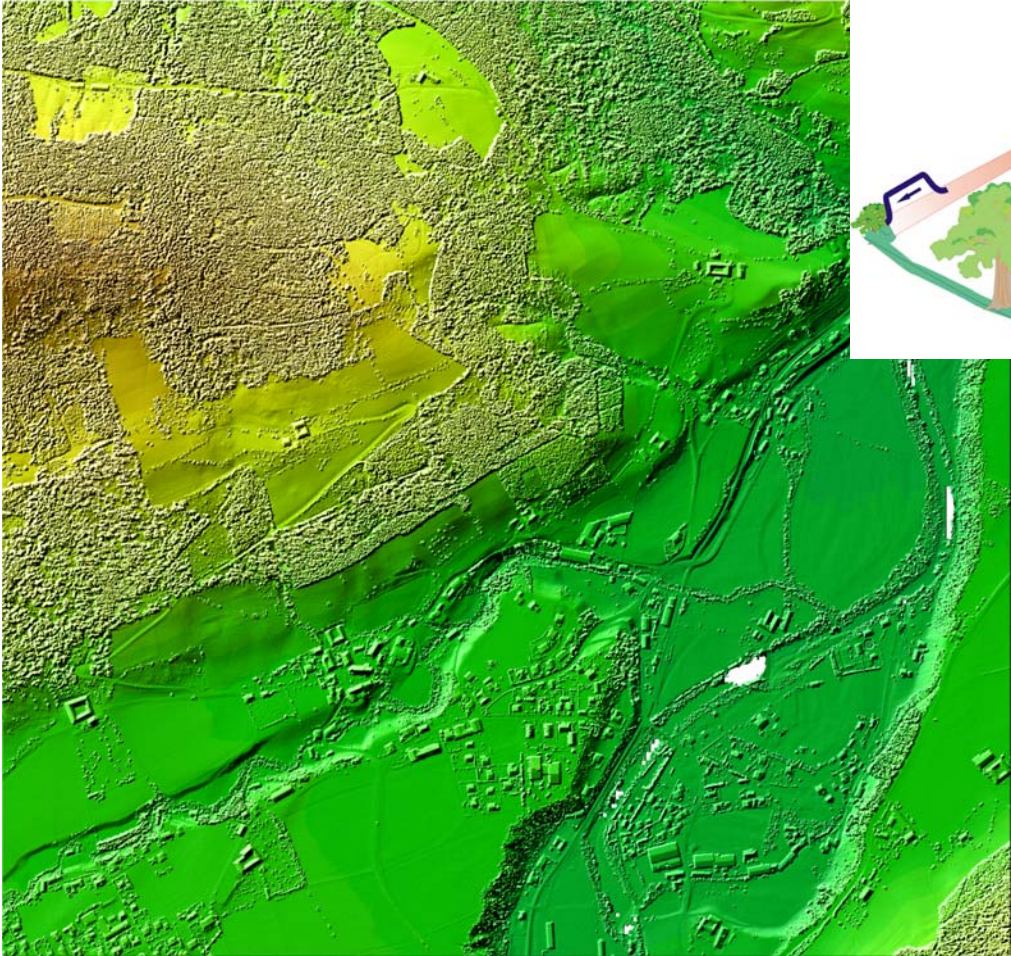
# Measurement Scales



# Topography

- **Lidar (Airborne Laser Scanning)**
  - Highly accurate 1 m DEMs
  - High-costs
  - Special software and expertise needed
- **ERS-1/2 tandem interferometry**
  - 30-100 m DEM
  - Data from years 1995-1998 available for most parts of the world
  - Data costs moderate, but special software and expertise needed
  - Accuracy highly variable depending on land cover and topography
    - reasonable accuracy (< 10m) for non-vegetated, flat terrain
- **Shuttle Radar Topography Mission (SRTM)**
  - 100 m DEM with almost global coverage
  - Data are free

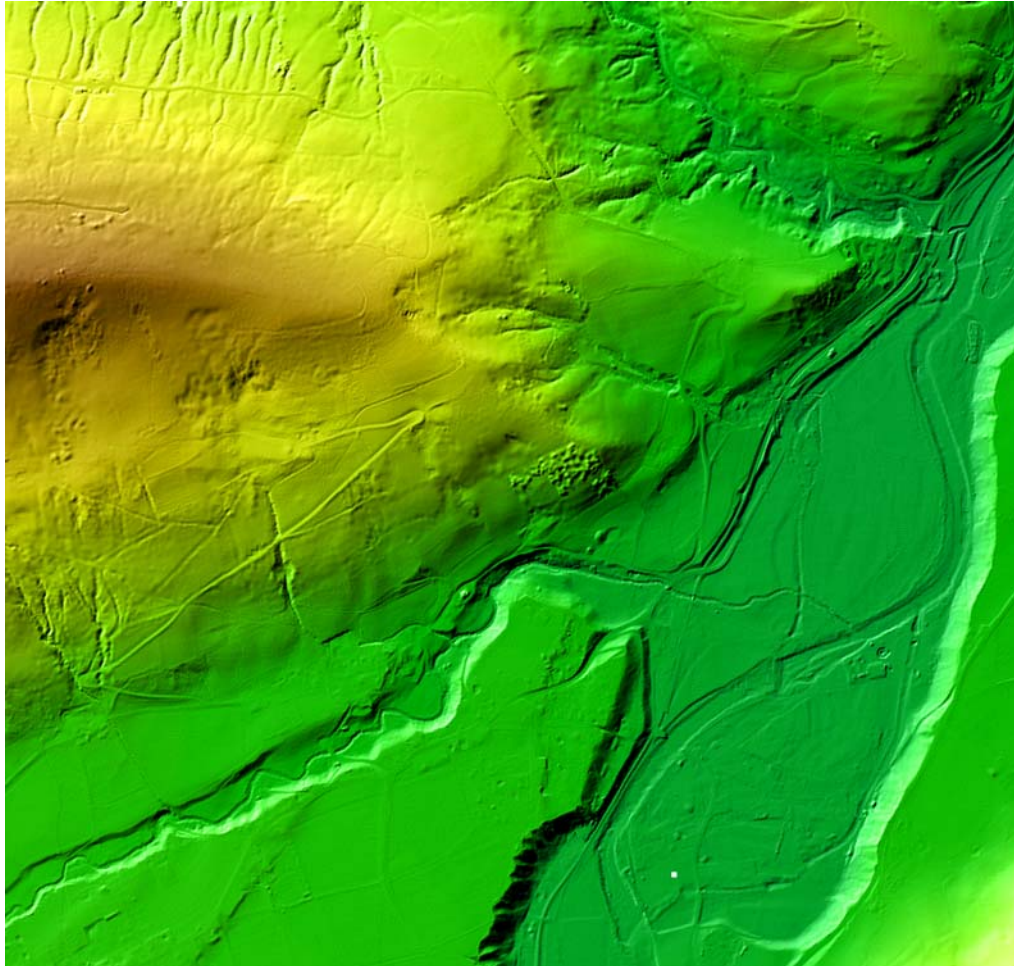
# Digital Surface Model from Lidar



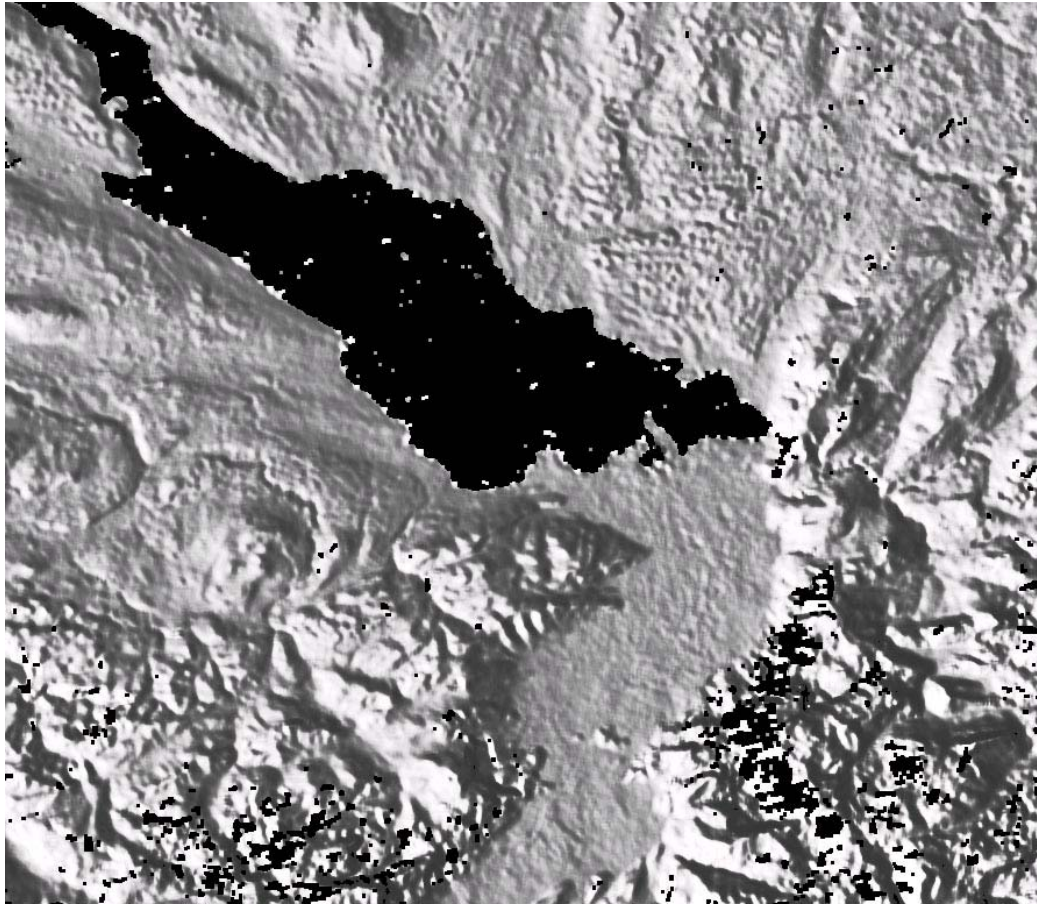
Laser scanner mounted on an airplane

Laser Scanner  
Flight of Almtal,  
Upper Austria

# Digital Terrain Model after Filtering



# DEM from ERS-1/2 Tandem Interferometry



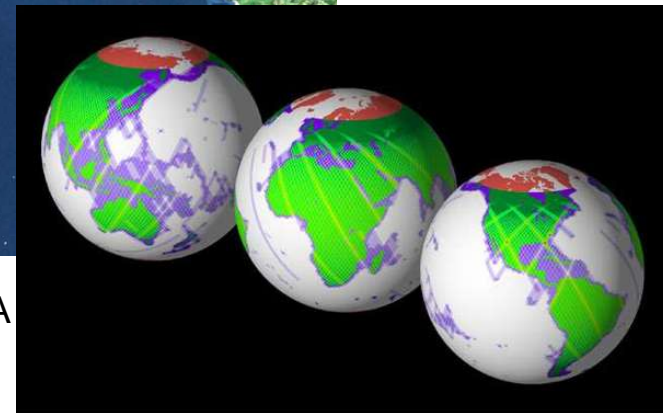
DEM from ERS-1/2  
tandem data produced  
with commercially  
available software,  
Bregenzner See,  
Vorarlberg



# Shuttle Radar Topography Mission



Street of Gibraltar (DEM with overlay of a Landsat image) © NASA



# Vegetation

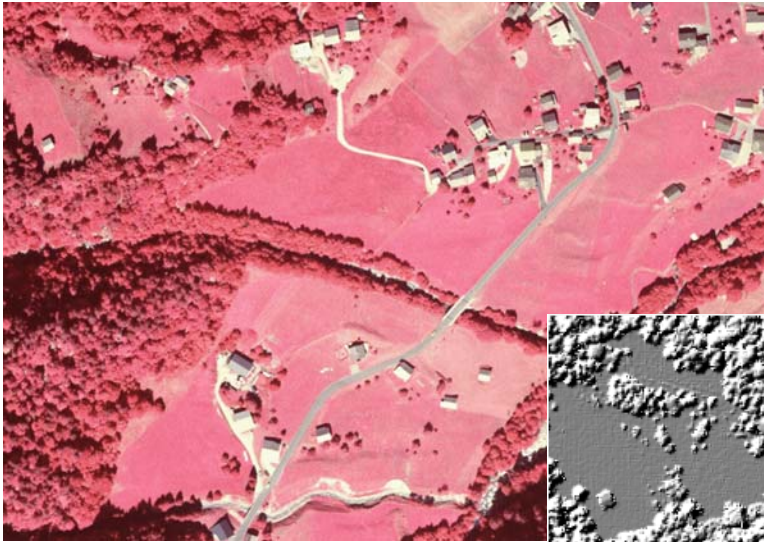
- **Lidar**

- Airborne laser scanning
  - High-quality 1m vegetation height models, but expensive for large areas
  - Research is still in the beginning
- Full-waveform satellite lidars for vegetation mapping have repeatedly been proposed, but so far not approved

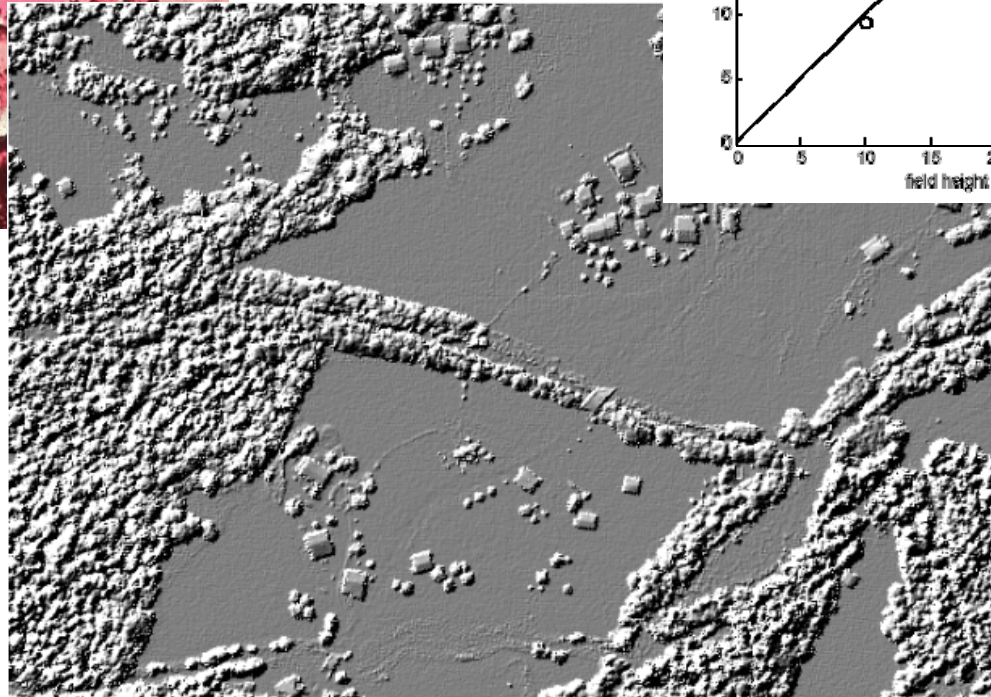
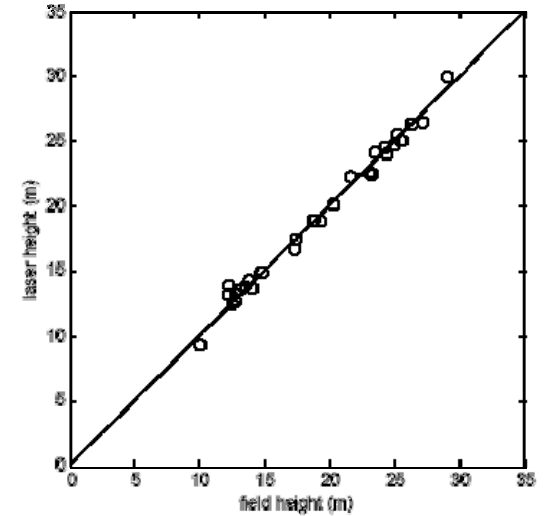
- **SAR and SAR Interferometry**

- Broad vegetation categories can be distinguished
- Not suited at local scale (< 100 m)
- Data costs moderate, but specialised software and high level of expertise needed

# Vegetation Height from Lidar



Infrared Orthophoto



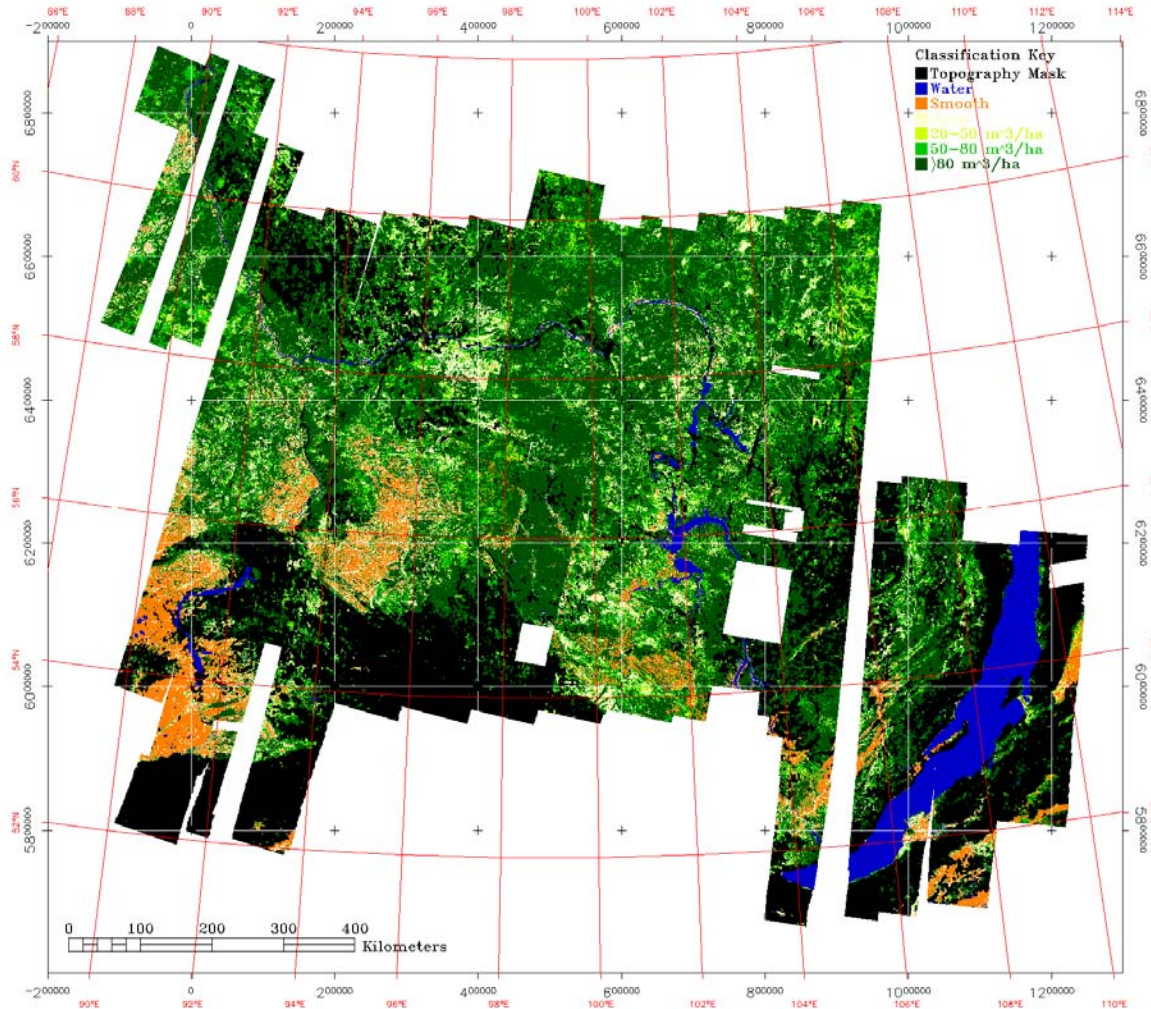
Normalised surface model  
from airborne lidar data  
© Landesvermessungsamt  
Feldkirch

# Vegetation Parameters from SAR Interferometry



ERS-1/2 Tandem  
Coherence,  
Bregenzener See,  
Vorarlberg

# Biomass Mapping using SAR Interferometry



## Legend:

Masked Areas

Water

Smooth Surfaces

Forest:

0-20 m<sup>3</sup>/ha

20-50 m<sup>3</sup>/ha

50-80 m<sup>3</sup>/ha

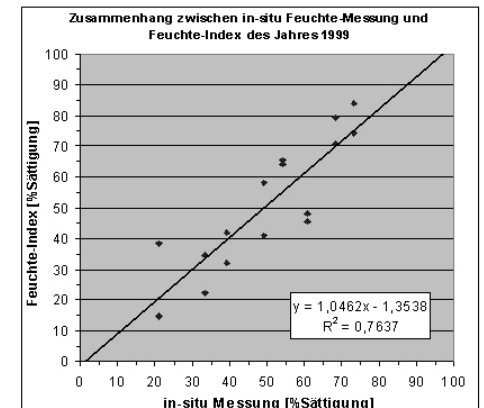
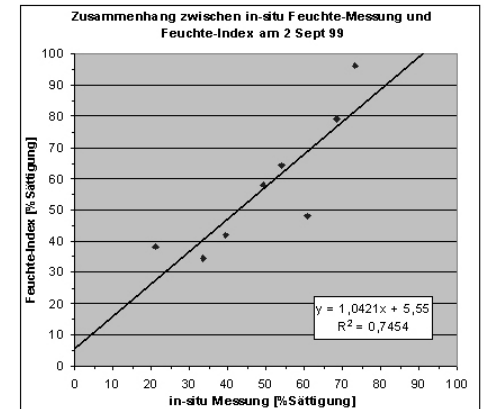
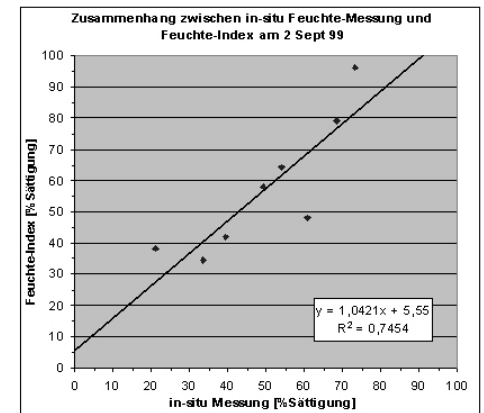
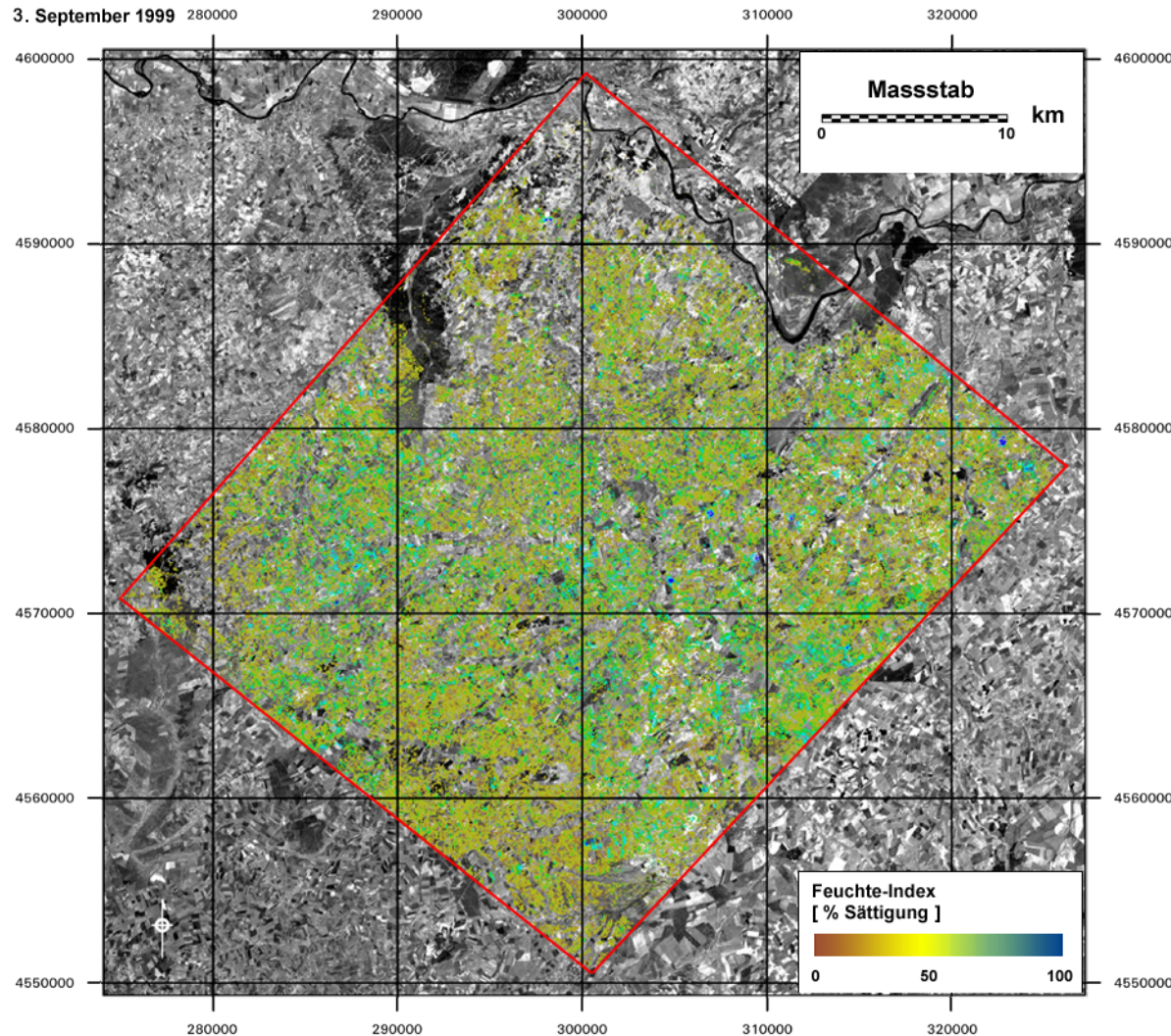
> 80 m<sup>3</sup>/ha

SIBERIA forest map  
of a 1 Mio. km<sup>2</sup> large  
area from ERS tandem  
coherence and JERS  
SAR Data

# Soil Moisture

- **Local-scale soil moisture (< 1 km)**
  - Synthetic Aperture Radar (SAR)
  - Still in an experimental stage, no operational products
  - All satellite SAR systems are multi-purpose missions, i.e. not well suited for the task of soil moisture monitoring
- **Large-scale soil moisture (> 10 km): 2005-2015 Decade of Soil Moisture Remote Sensing**
  - Dedicated, experimental soil moisture missions
    - **SMOS**: ESA Earth Explorer Opportunity Mission (2007)
    - **HYDROS**: NASA Hydrosphere State Mission (2010)
  - Operational “soil moisture” missions
    - **METOP**
    - **AMSR, CMIS**
  - First experimental products are becoming now available

# Soil Moisture from SAR

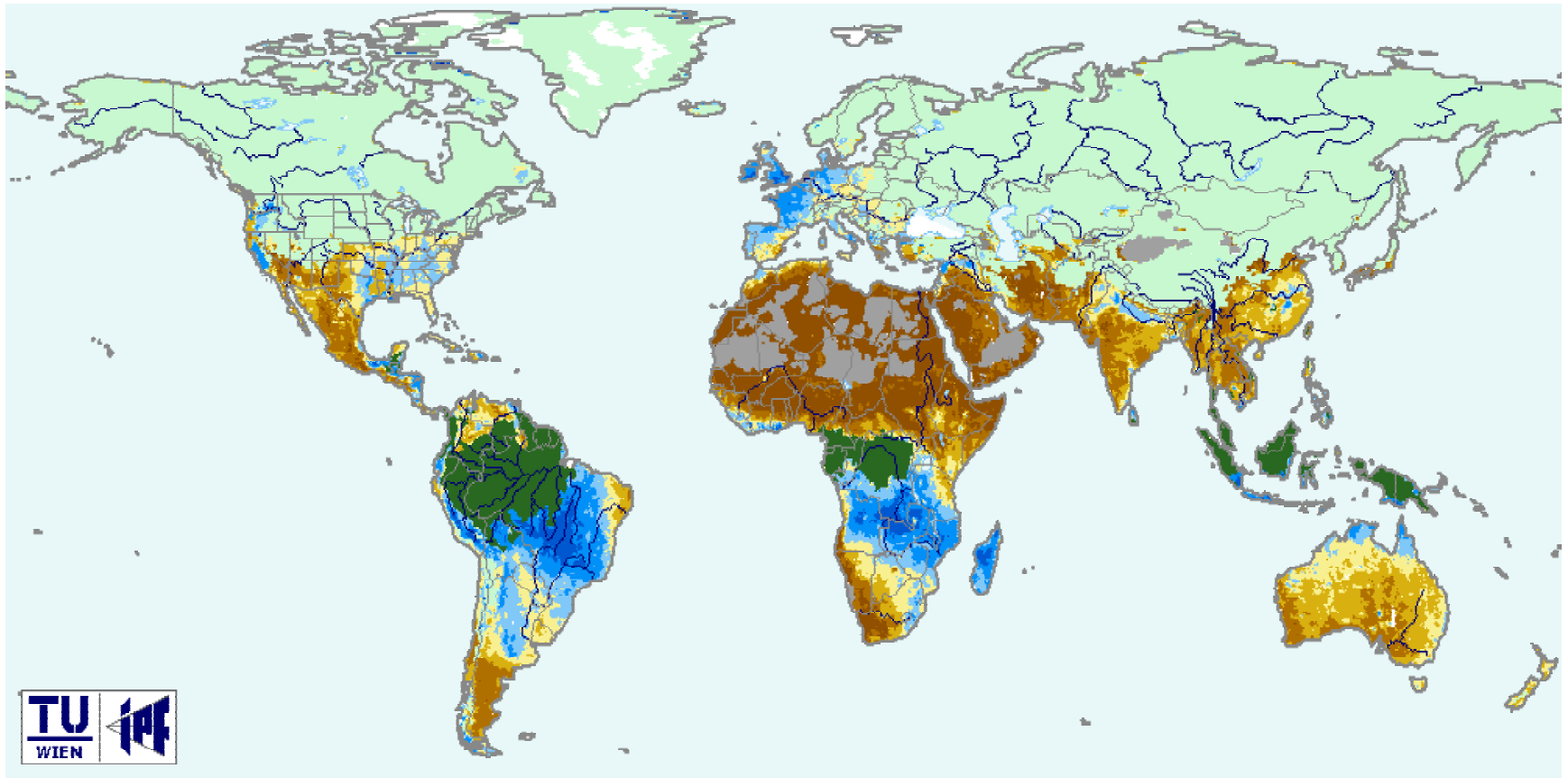




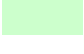
Soil moisture derived from SAR using a change detection approach

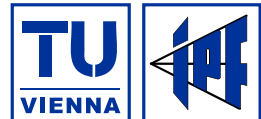
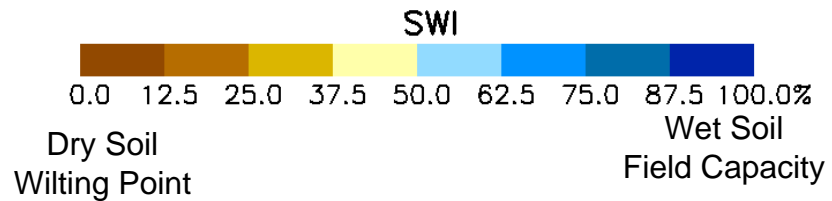
© DLR and I.P.F.

# Seasonal Soil Moisture Dynamics

JANUARY



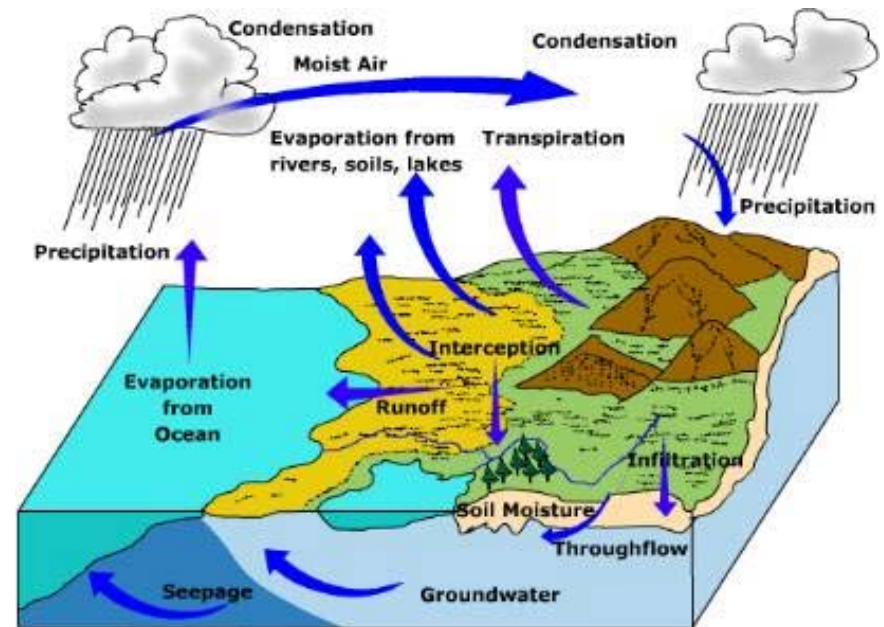
-  Closed Forest Cover
-  Azimuthal Effects
-  Frozen Soil/Snow Cover





# Integrated Data-Modelling Approaches

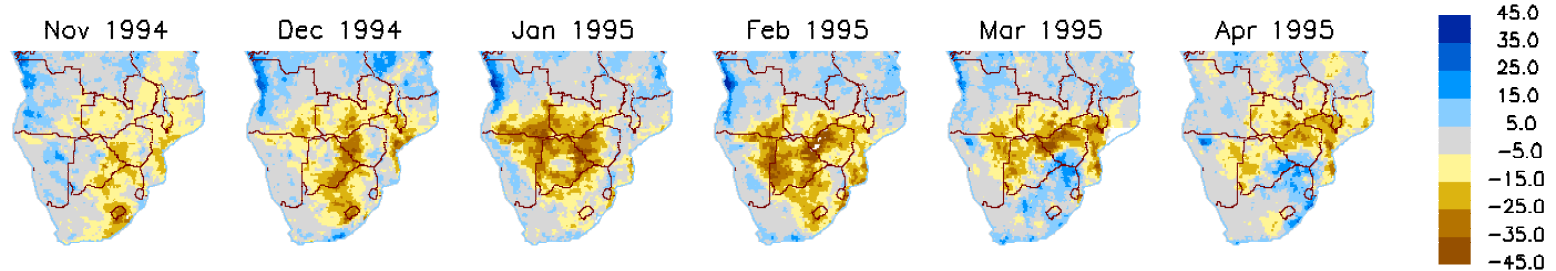
- Remote sensing can provide spatial data products for hydrologic model validation, calibration or input
- Only a limited number of geophysical parameters can be derived
- Integration of
  - In-situ observation  
i.e synoptic observations
  - Remotely sensed geophysical products
  - Modelling approaches



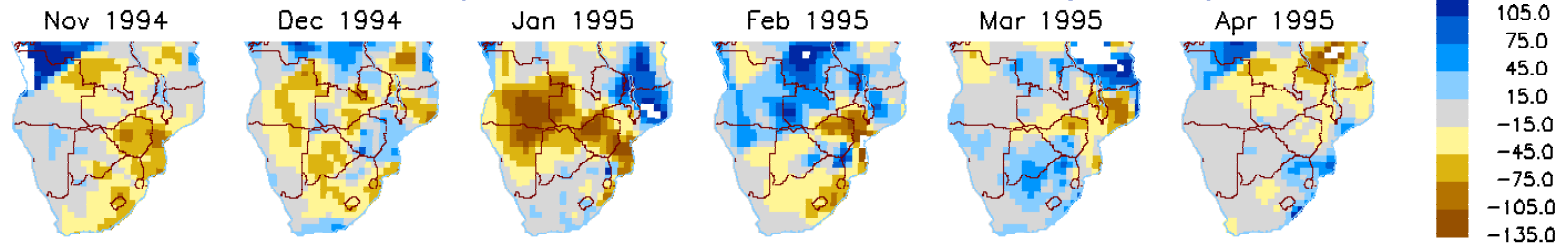
What parameters can be measured using RS?

# Droughts in South Africa 1994/95

## SWI Deviation from Normal(92–00)



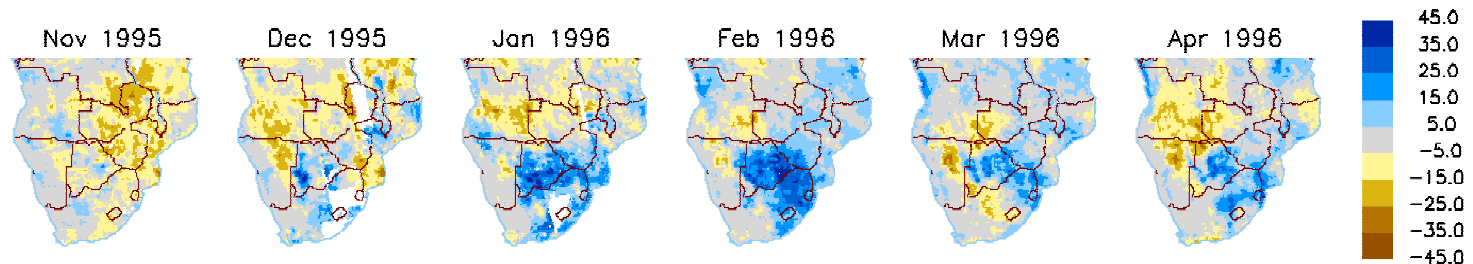
## Precipitation Deviation from Normal(92–00)



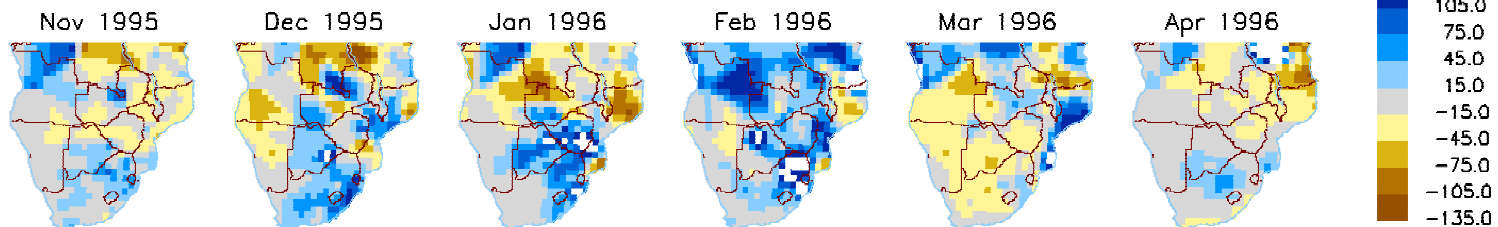
During the 1994/95 season, a blocking high-pressure system related to warm El Niño events kept southern Africa dry. Most of southern African countries suffered from severe droughts. In the north-western part of Zimbabwe, rainfall during the 1994/1995 season was near the lowest ever recorded. Cereal production fell to 45 percent of the long-term average. USAID reported that over six million people needed emergency assistance because of crop failures and food shortages throughout southern Africa.

# Floods in South Africa 1995/96

## SWI Deviation from Normal(92-00)



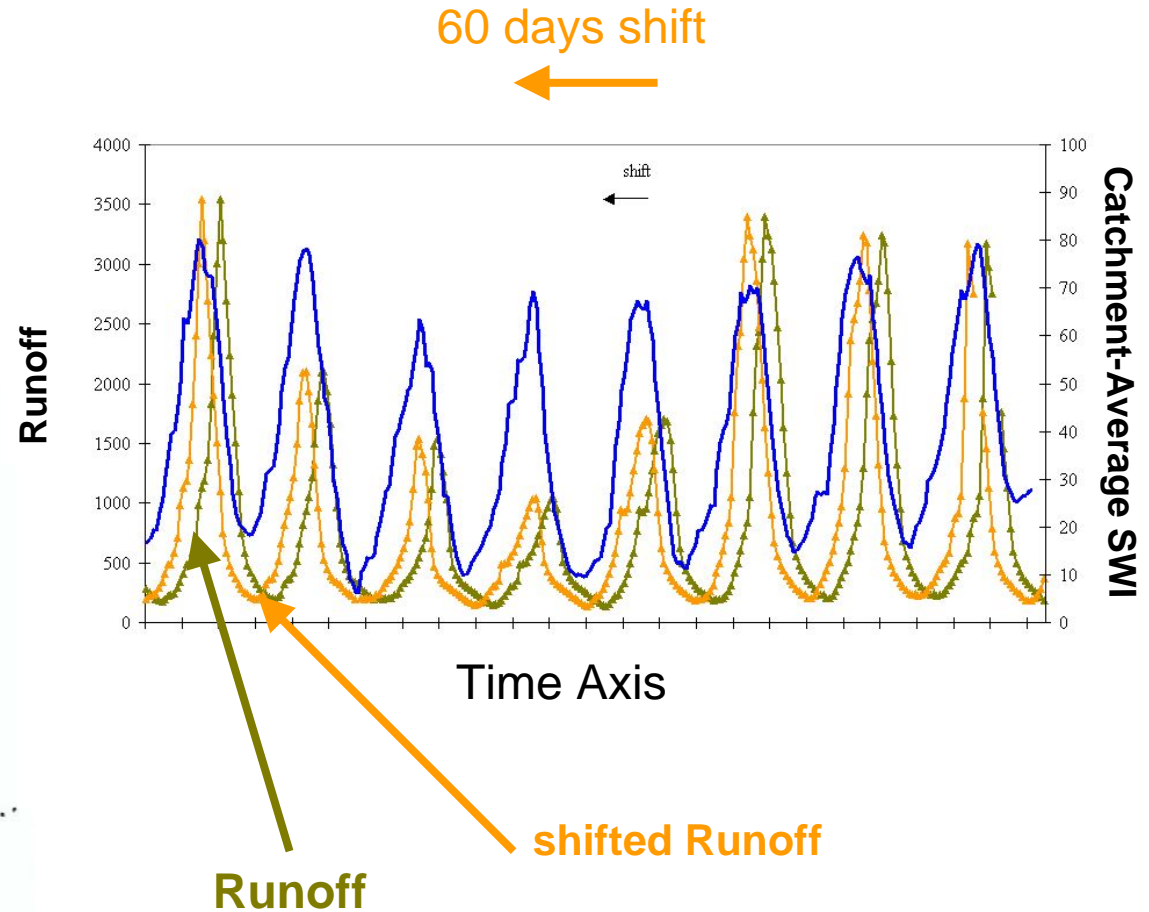
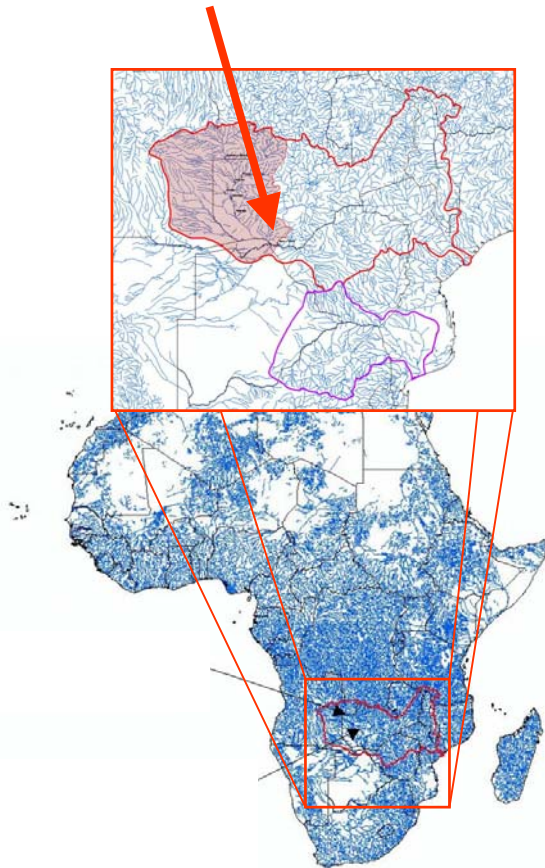
## Precipitation Deviation from Normal(92-00)



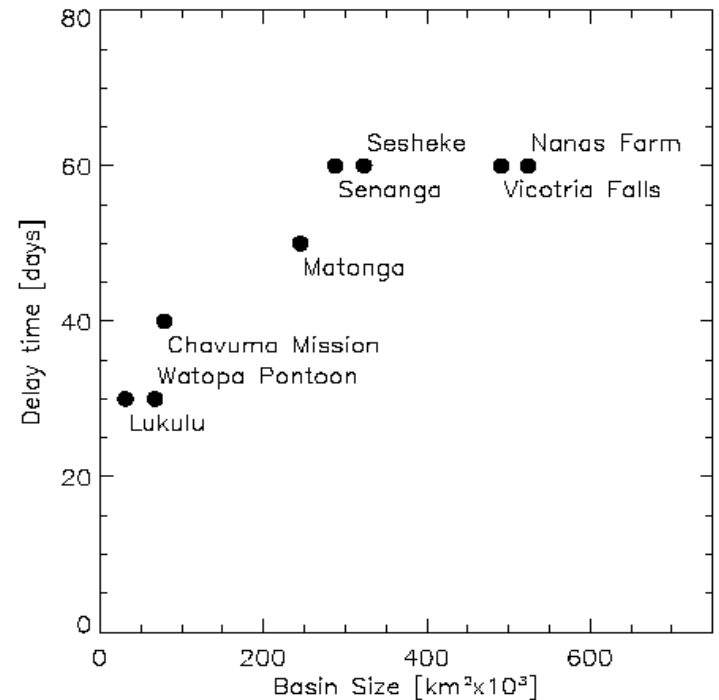
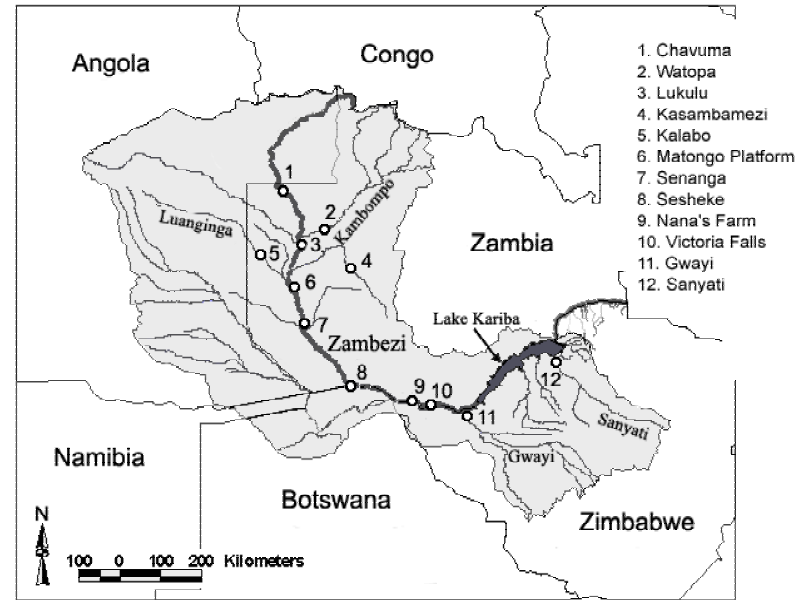
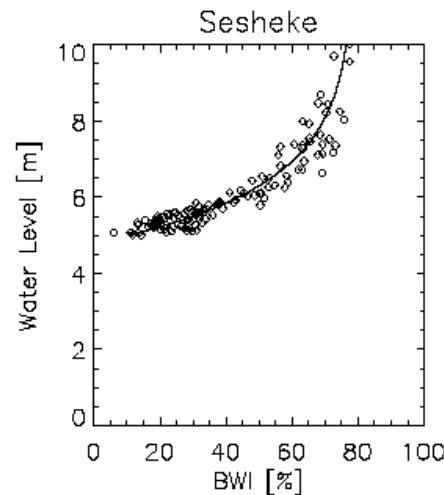
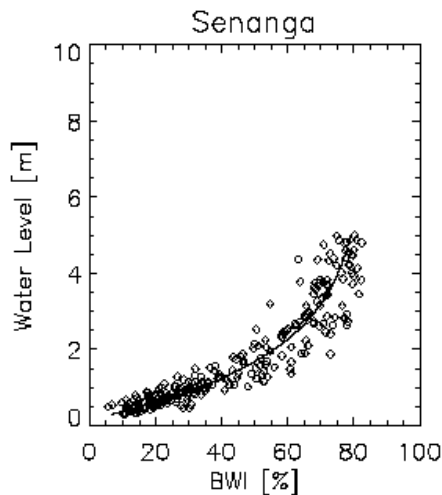
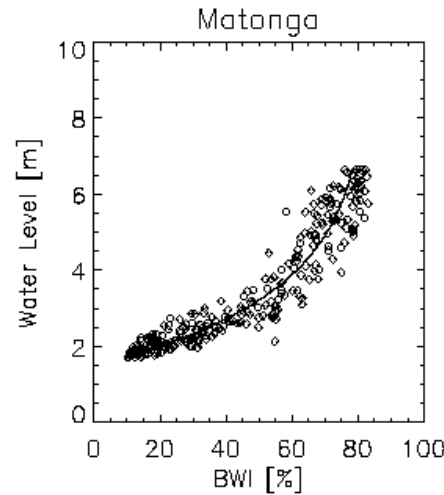
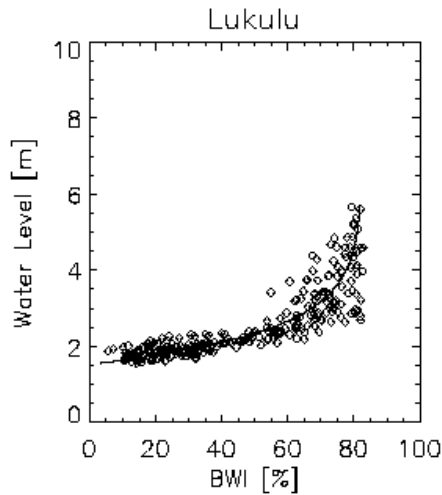
Contrary to the season 1994/95 in the season 1995/96, a progression of Atlantic lows led to a series of storms, bringing heavy rainfall to the area.. According to USAID the excessive rainfalls resulted in floods and consequently in damage to crops and property in the South African areas of Northern Transval and Eastern Cape Provinces and in Mozambique.

# Potential for Large-Scale Hydrologic Models

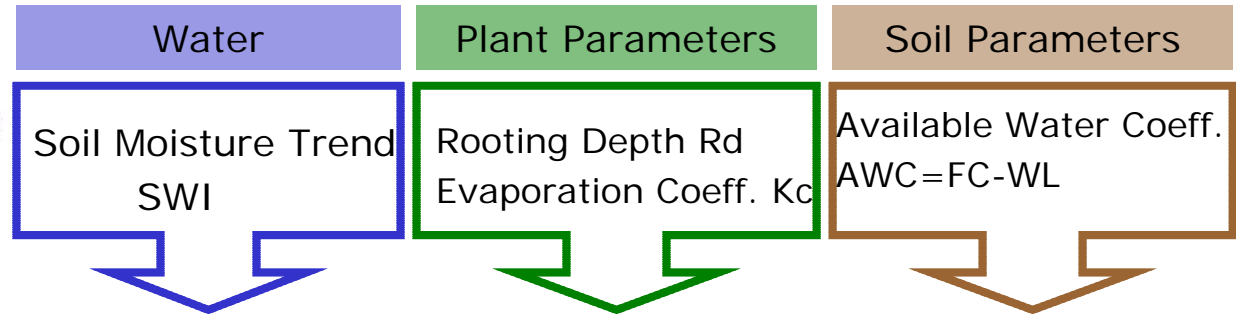
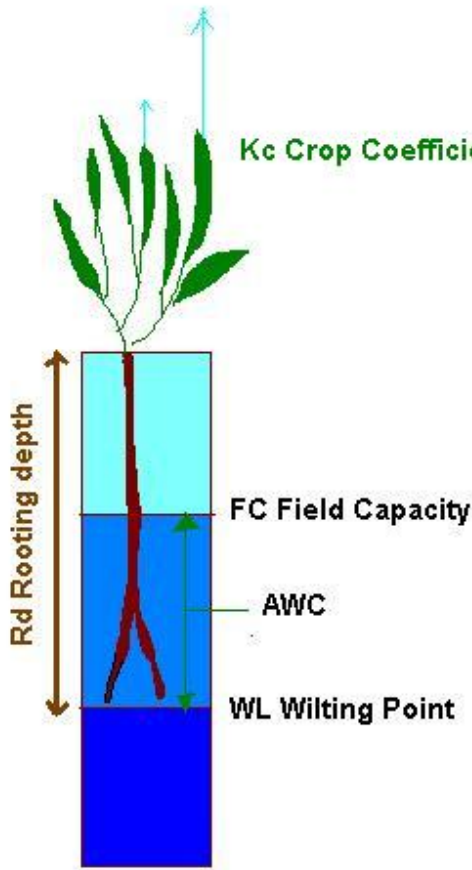
Sambesi – Nana's Farm



# Catchment Modelling – Case Study Zambezi River

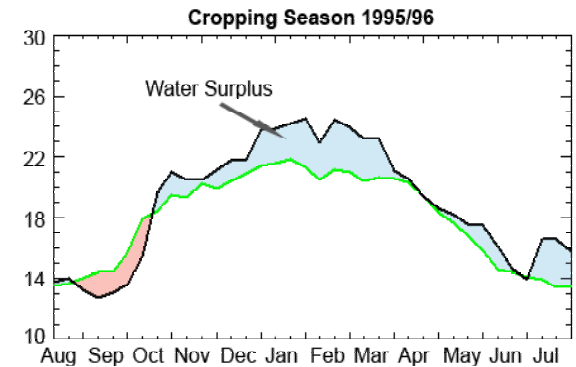
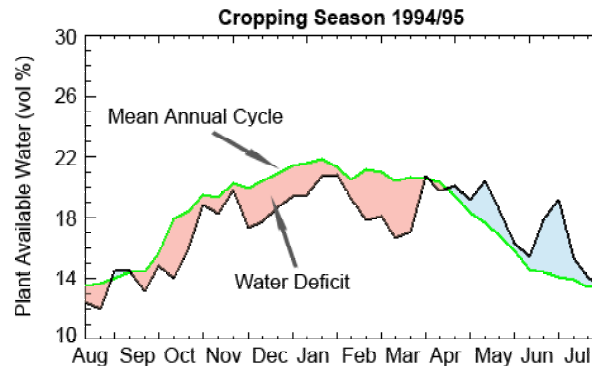


# Crop Performance Index



**Crop Performance Index**

$$CPI (\%) = ((SWI * Rd * AWC) - (Kc * AWC)) / (Kc * AWC) * 100$$

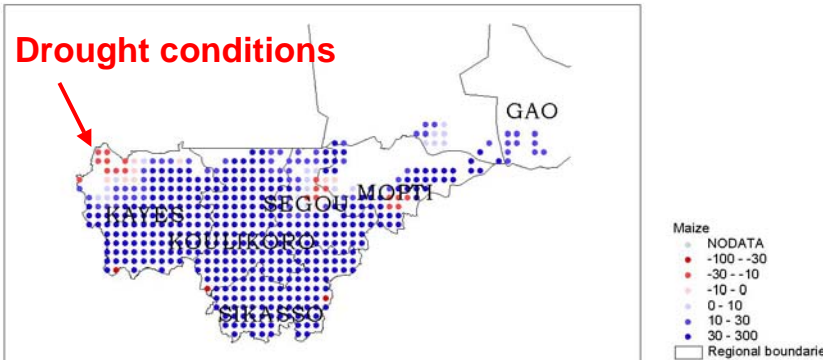


# Drought Indicators for Africa and China

## Mali

Drought conditions were confirmed by Malinese experts

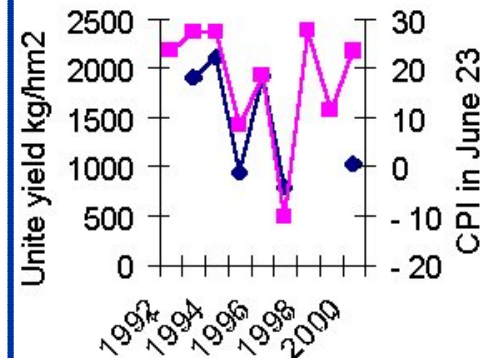
Plant growth conditions for Maize for the period 29-07 to 05-08



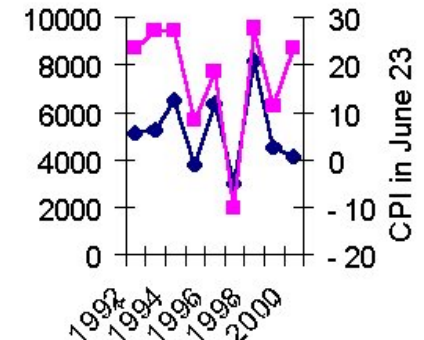
## China

Drought conditions were confirmed by statistics

Relation of proso millet yield with CPI in Ansai



Relation of corn yield with CPI in Ansai



## CONCLUSIONS:

- Simple yet powerful method
- CPI and actual yield correlate well
- Water shortage must be yield dominating factor
- Not applicable for irrigated crops

# Conclusions

- **Remote sensing is not just about land cover classification**
  - it is tool for monitoring geophysical parameters/processes
    - soil moisture, topography, vegetation height, biomass, evapotranspiration, etc.
- **Despite there has been yet few commercial success stories for satellite remote sensing, major advances are being made**
  - It is not always spatial resolution that counts
  - tremendous potential in hydrologic and agronomic applications
  - In collaboration with the user communities, new modelling approaches must be developed
    - Integration with in-situ observations and models (hydrology, agronomy, etc.)