

# REPLACEMENT PARTS MANUAL

# HEAT KING HK300

Mobile Glycol Heating System





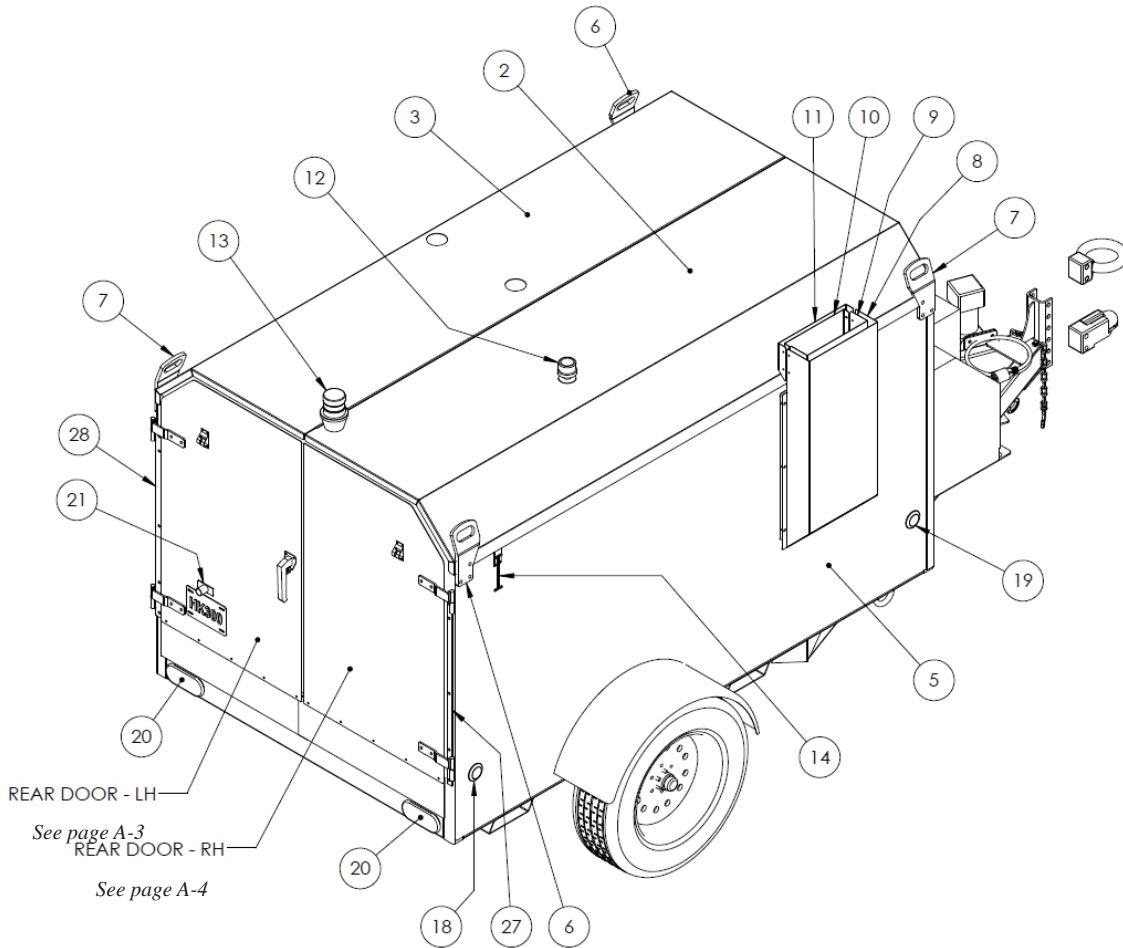
## Disclaimer

This manual is proprietary to Heat King Division of Tamarack Industries (hereafter “Heat King”), and may be revised from time to time without notice. Heat King disclaims any understanding to provide you with such revisions, if any. This manual is copyrighted with all rights reserved. No portion of this manual may be copied or reproduced by any means without the prior written consent of Heat King. While every precaution has been taken in the preparation of this document, Heat King assumes no liability to any party for any loss or damage caused by errors or omissions or by statements resulting from negligence, accident, or any other cause. Heat King further assumes no liability arising out of the application or use of any product or system described, herein; nor any liability for incidental or consequential damages arising from the use of this document. Heat King disclaims all warranties of merchantability of fitness for a particular purpose. Heat King reserves the right to make changes without further notice to any product or system described herein to improve reliability, function, or design.

# Page Index

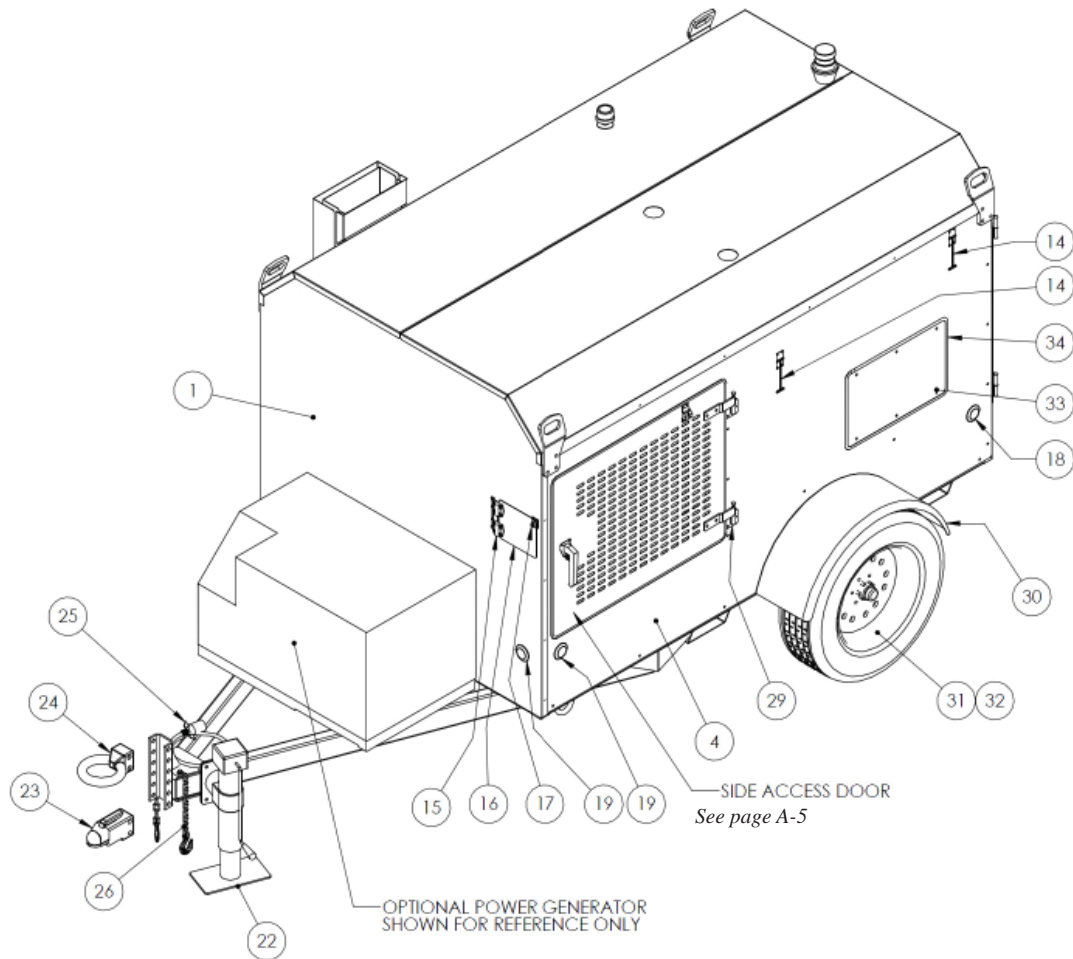
| Item Name                           | Page #                 |
|-------------------------------------|------------------------|
| <b>Trailer</b>                      | <b>Chapter A</b>       |
| Trailer Exterior Hardware           | A-1, A-2               |
| Side Access Door                    | A-3                    |
| Rear Door - Left Hand               | A-4                    |
| Rear Door - Right Hand              | A-5                    |
| <b>Pump Plate and Heater</b>        | <b>Chapter B</b>       |
| Pump Plate Assembly                 | B-1                    |
| Heating Coil Assembly               | B-2                    |
| Burner Assembly                     | B-3, B-4               |
| Circulation Pump Assembly,          | B-5, B-6               |
| Field Pump Assembly,                | B-7                    |
| Pump Assembly Breakdown             | B-8                    |
| Fuel Filter Assembly                | B-9                    |
| <b>Control Box</b>                  | <b>Chapter C</b>       |
| Control Box Assembly                | C-1                    |
| <b>Fuel Tank</b>                    | <b>Chapter D</b>       |
| Fuel Tank Assembly                  | D-1                    |
| <b>Glycol System</b>                | <b>Chapter E</b>       |
| Glycol Tank Assembly                | E-1, E-2               |
| Supply Manifold                     | E-3                    |
| Return Manifold                     | E-4                    |
| <b>Reel</b>                         | <b>Chapter F</b>       |
| Reel Assembly                       | F-1                    |
| <b>Electrical System Schematics</b> | <b>Chapter G</b>       |
| Panel Box Electrical Schematic      | G-1                    |
| Inside Trailer Electrical Schematic | G-2                    |
| Panel Door Electrical Schematic     | G-3                    |
| <b>Company Contact Information</b>  | <b>Back Cover Page</b> |

# Trailer Exterior Hardware, HK 300



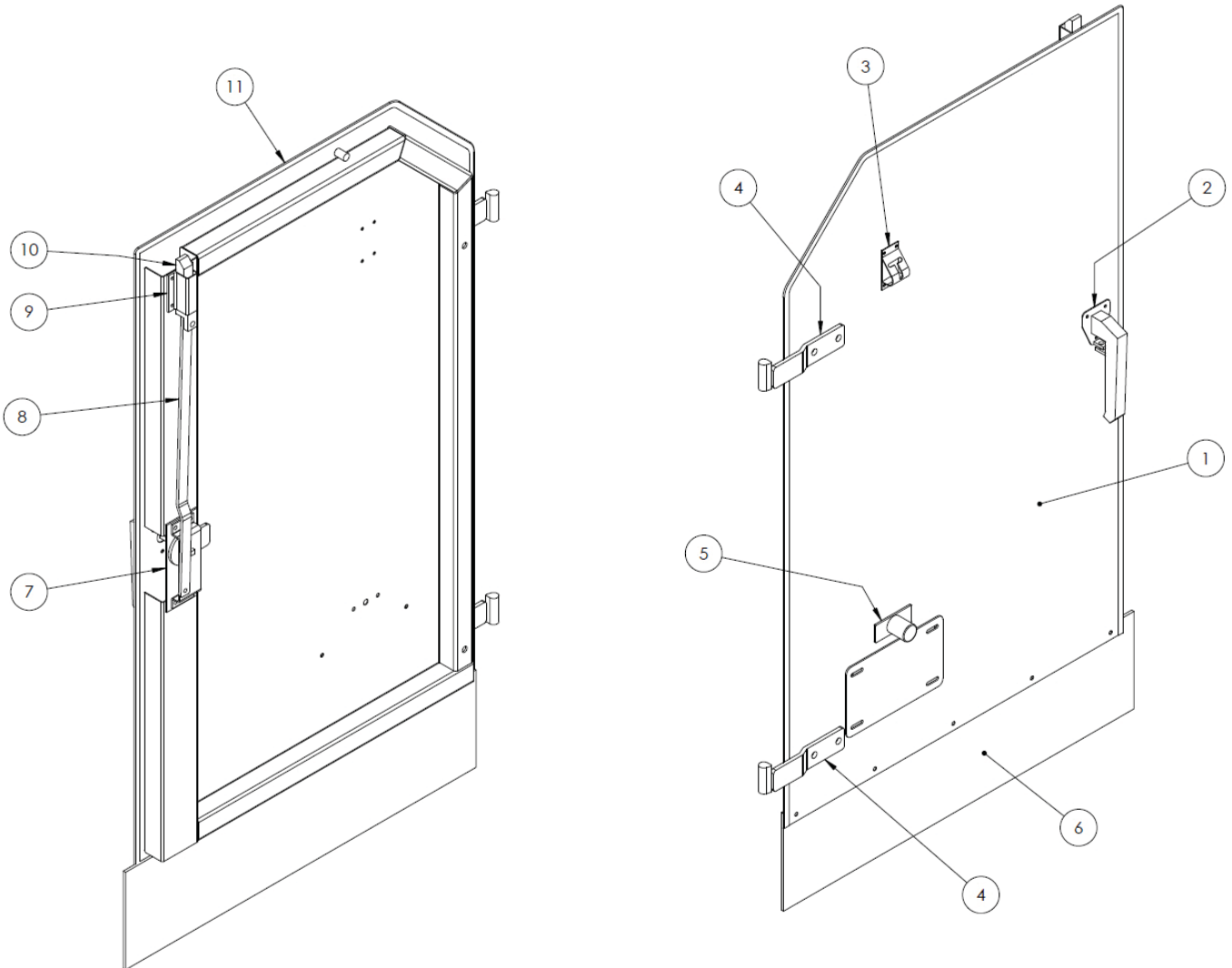
| Ref. | Part   | Description        | Qty. |
|------|--------|--------------------|------|
| 1    | 448097 | PANEL, FRONT       | 1    |
| 2    | 448170 | PANEL, ROOF        | 1    |
| 3    | 448133 | PANEL, ROOF        | 1    |
| 4    | 448171 | PANEL, SIDE        | 1    |
| 5    | 448134 | PANEL, SIDE        | 1    |
| 6    | 448204 | HOOK, LIFT, RHS    | 2    |
| 7    | 448206 | HOOK, LIFT, LHS    | 2    |
| 8    | 451111 | EXHAUST, GUARD     | 1    |
| 9    | 451110 | EXHAUST, TERMINAL  | 1    |
| 10   | 451113 | EXHAUST, TERMINAL  | 1    |
| 11   | 451112 | CAP, EXHAUST       | 1    |
| 12   | 445165 | FUEL TANK BREATHER | 1    |
| 13   | 446707 | STROBE LIGHT       | 1    |
| 14   | 448009 | DOOR KEEPER , 6"   | 3    |
| 15   | 448248 | HINGE              | 2    |
| 16   | 448243 | FUEL DOOR          | 1    |
| 17   | 451152 | FUEL DOOR HASP     | 1    |

# Trailer Exterior Hardware HK 300 - Cont'd



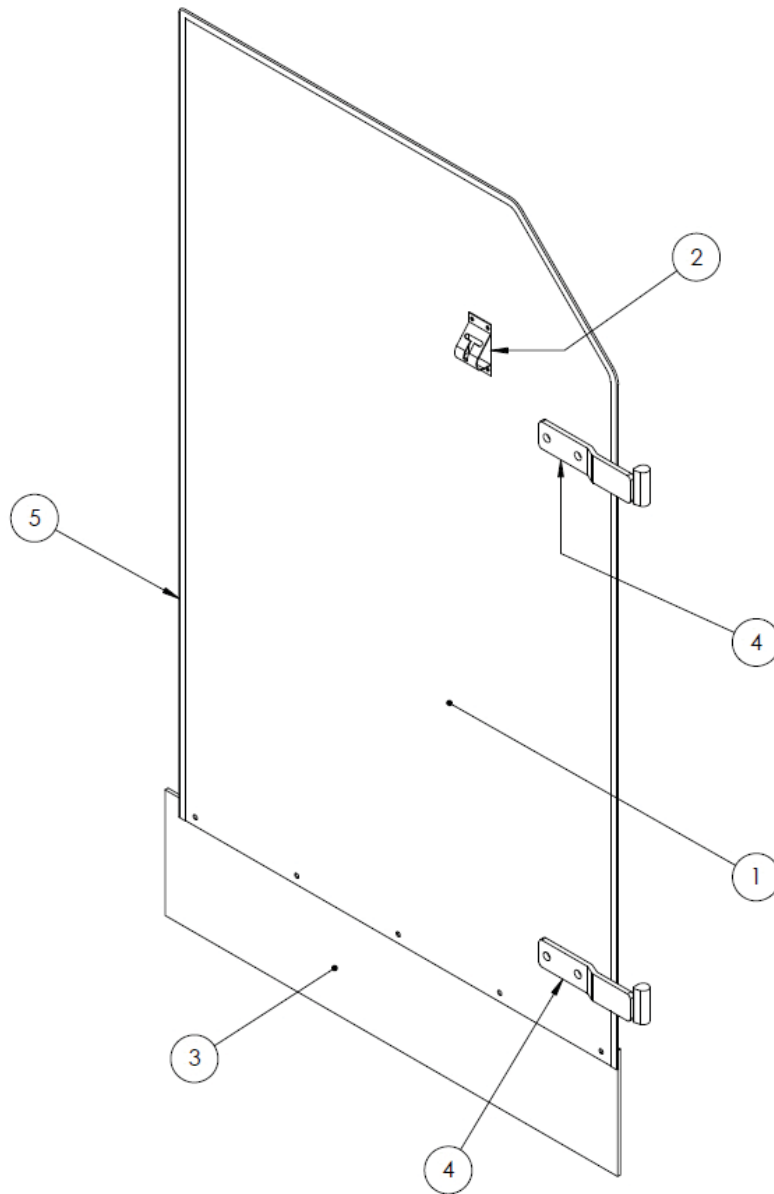
| Ref. | Part   | Description                       | Qty. |
|------|--------|-----------------------------------|------|
| 18   | 477008 | LAMP, RED, CLEARANCE 2"           | 2    |
| 19   | 477007 | LAMP, ORANGE, CLEARANCE 2"        | 4    |
| 20   | 477009 | LAMP, STOP                        | 2    |
| 21   | 448021 | LIGHT, LICENCE PLATE, HK          | 2    |
| 22   | 448004 | TRAILER JACK, 8000 LB             | 1    |
| 23   | 448003 | BALL COUPLER, 2-5/16"             | 1    |
| 24   | 449025 | PINTLE COUPLER                    | 1    |
| 25   | 448017 | CABLE, ARTIE RV w/7 Pin CONNECTOR | 1    |
| 26   | 448016 | CHAIN, SAFETY 3/8" x 30" GR 43    | 2    |
| 27   | 448213 | REAR DOOR HINGE ASSY. - RH        | 1    |
| 28   | 448212 | REAR DOOR HINGE ASSY. - LH        | 1    |
| 29   | 448191 | SIDE DOOR HINGE                   | 2    |
| 30   | 448002 | FENDER, 10.75 x 36                | 2    |
| 31   | 448001 | RIM AND TIRE ASSY. (225-75-R15)   | 2    |
| 32   | 448000 | AXLE ASSY.                        | 1    |
| 33   | 447380 | SERVICE PANEL                     | 1    |
| 34   | 447160 | SEAL, BULB                        | 1    |

# Rear Door Assembly - Left Hand, HK 300



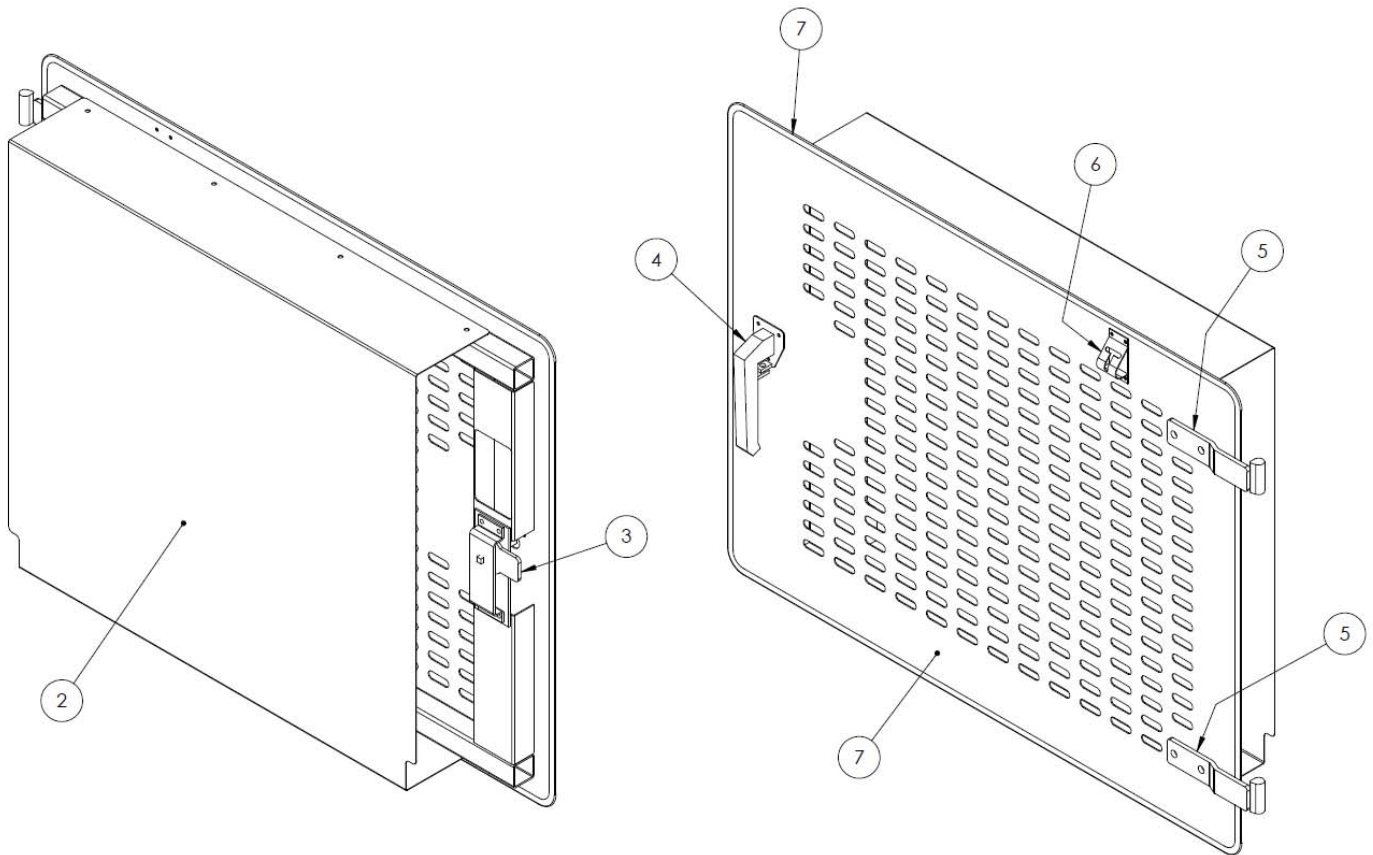
| Ref. | Part   | Description                 | Qty. |
|------|--------|-----------------------------|------|
| 1    | 448150 | 445155 DOOR REAR, LH        | 1    |
| 2    | 448006 | HANDLE, DOOR                | 1    |
| 3    | 448009 | KEEPER, DOOR , 6 IN         | 1    |
| 4    | 448178 | SIDE DOOR HINGE ASSY.       | 2    |
| 5    | 448021 | LIGHT, LICENCE PLATE        | 1    |
| 6    | 448011 | FLAP, 8 IN, REAR DOOR       | 1    |
| 7    | 448007 | LATCH, 3 POINT, CENTER CASE | 1    |
| 8    | 448093 | ROD                         | 1    |
| 9    | 448091 | CASE BOLT                   | 1    |
| 10   | 448092 | BOLT                        | 1    |
| 11   | 447160 | SEAL, BULB                  | 1    |

# Rear Door Assembly - Right Hand, HK 300



| Ref. | Part   | Description           | Qty. |
|------|--------|-----------------------|------|
| 1    | 448156 | REAR DOOR, RIGHT      | 1    |
| 2    | 448009 | KEEPER, DOOR , 6 IN   | 1    |
| 3    | 448011 | FLAP, 8 IN, REAR DOOR | 1    |
| 4    | 448178 | SIDE DOOR HINGE ASSY. | 2    |
| 5    | 447160 | SEAL, BULB            | 1    |

# Side Door Assembly, HK 300

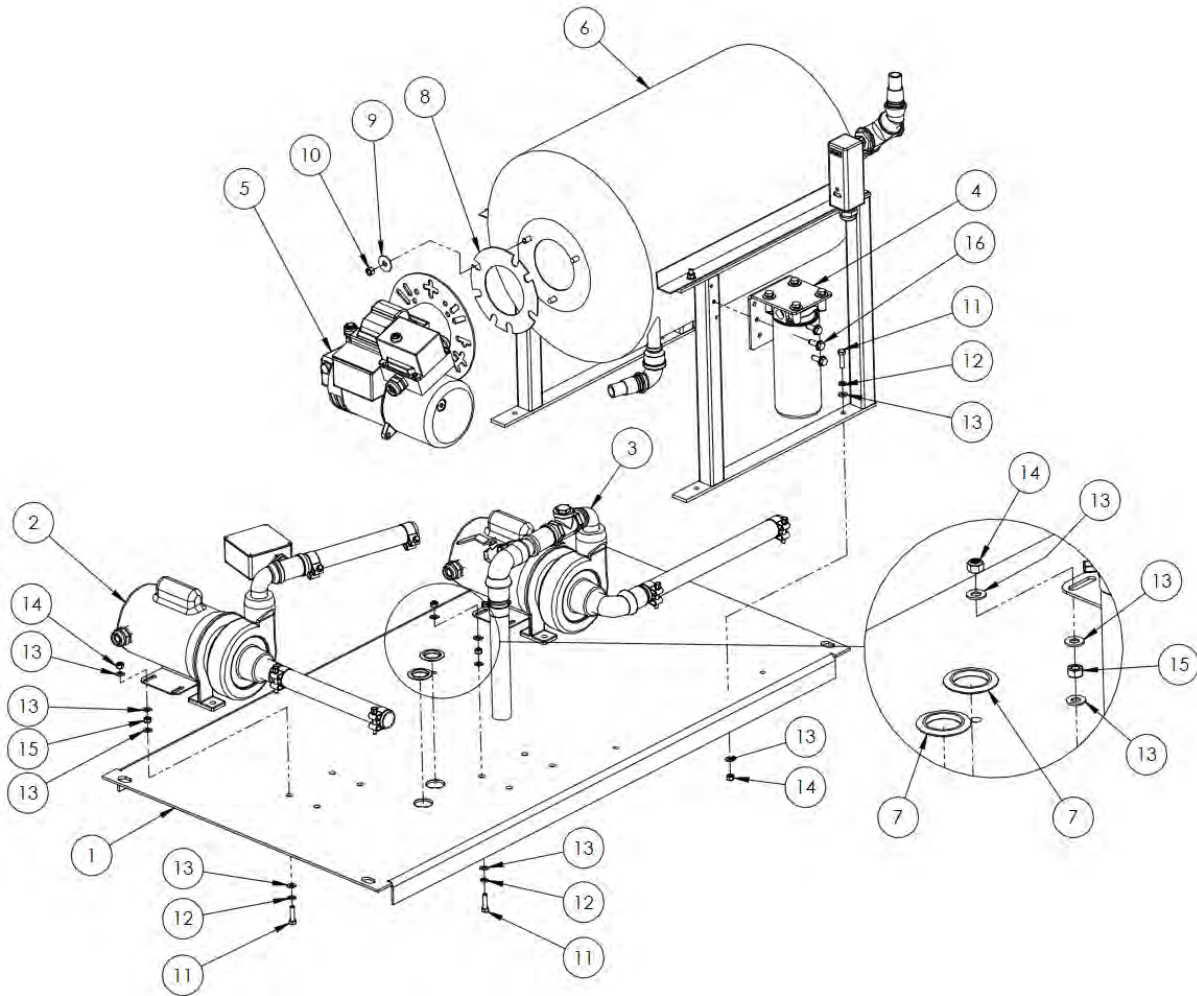


| Ref. | Part   | Description                 | Qty. |
|------|--------|-----------------------------|------|
| -    | 448157 | COMPLETE SIDE DOOR ASSY     | 1    |
| 1    | 448136 | PANEL, SIDE DOOR            | 1    |
| 2    | 448142 | GUARD WIND SHIELD           | 1    |
| 3    | 448007 | LATCH, 3 POINT, CENTER CASE | 1    |
| 4    | 448006 | HANDLE, DOOR                | 1    |
| 5    | 448178 | SIDE DOOR HINGE ASSY.       | 2    |
| 6    | 448009 | KEEPER, DOOR , 6 IN         | 1    |
| 7    | 447160 | SEAL, BULB                  | 1    |



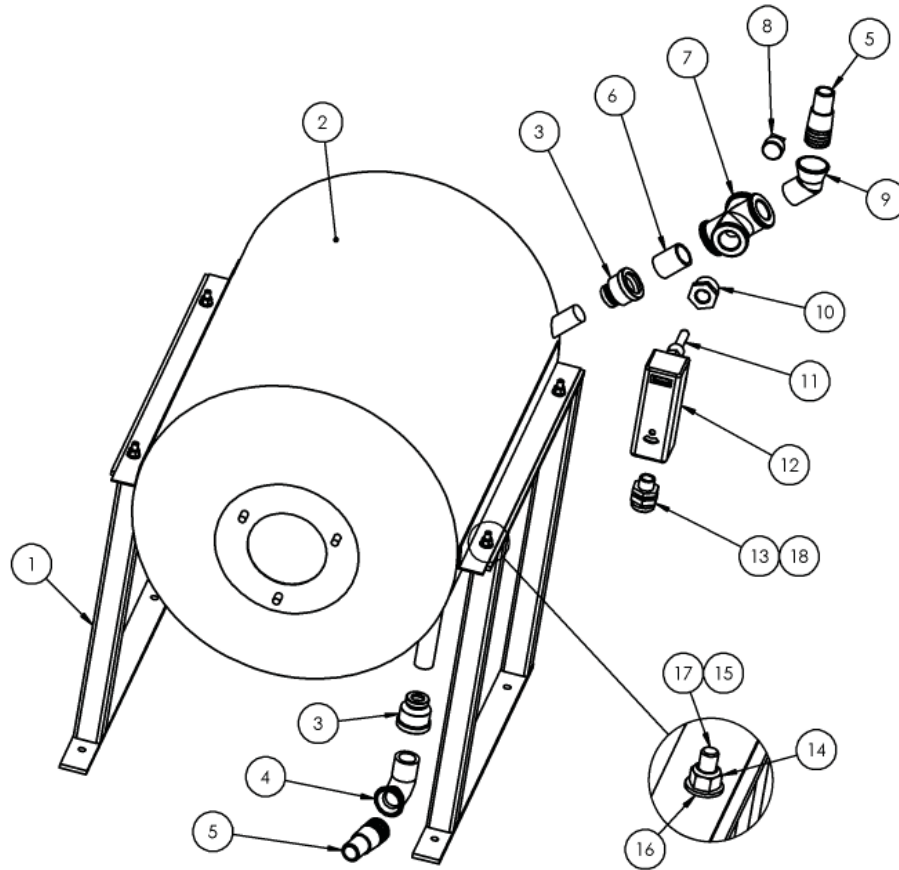


# Pump Plate Assembly, HK 300



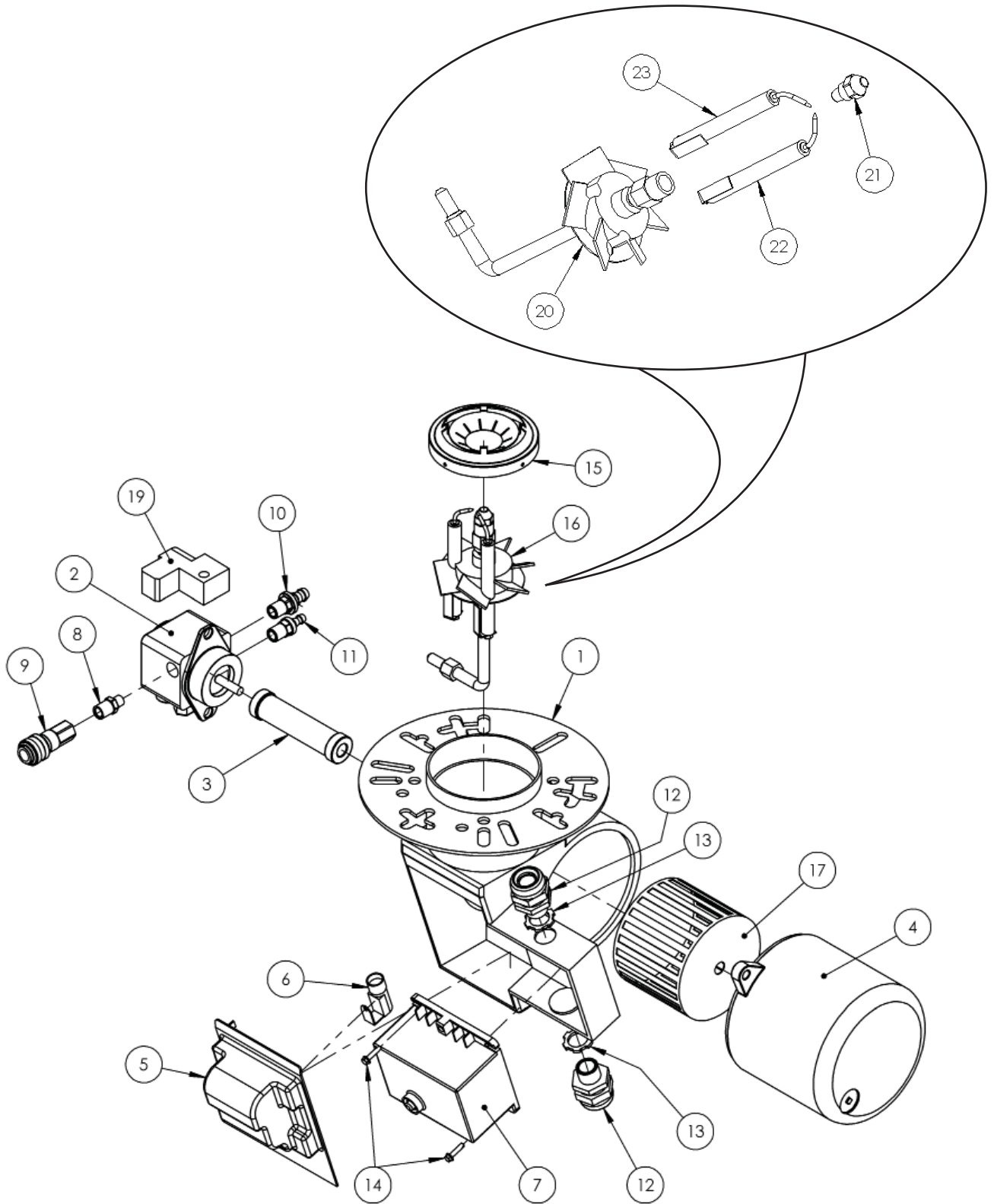
| Ref. | Part         | Description                               | Qty. |
|------|--------------|---|------|
| 1    | 448103       | PLATE, PUMP FLOOR, HK 300                 | 1    |
| 2    | See Page B-5 | CIRCULATION PUMP ASSEMBLY, HK 300         | 1    |
| 3    | See Page B-6 | FIELD PUMP ASSEMBLY, HK 300               | 1    |
| 4    | See Page B-8 | FUEL FILTER ASSEMBLY, HK 300              | 1    |
| 5    | 451320       | BURNER ASSEMBLY (See Page B-3)            | 1    |
| 6    | See Page B-2 | HEATING COIL ASSEMBLY, HK 300             | 1    |
| 7    | 440203       | BUSHING, SNAP-IN                          | 2    |
| 8    | 441136       | SEAL, GASKET                              | 1    |
| 9    | 174987       | WASHER, 3/8 FLAT, WIDE                    | 3    |
| 10   | 227830       | NUT, HEX, 3/8                             | 3    |
| 11   | 225990       | BOLT, HEX HEAD, 5/16 X 1-1/4              | 12   |
| 12   | 176220       | WASHER, 5/16, SPRING                      | 12   |
| 13   | 174990       | WASHER, FLAT, 5/16                        | 40   |
| 14   | 227831       | NUT, HEX, NYLON-INSERT, 5/16              | 12   |
| 15   | 227830       | NUT, HEX, 3/8                             | 8    |
| 16   | 228061       | BOLT, FLANGE HEAD, SELF-DRILLING, 3/8 X 1 | 3    |

# Heating Coil Assembly, HK 300

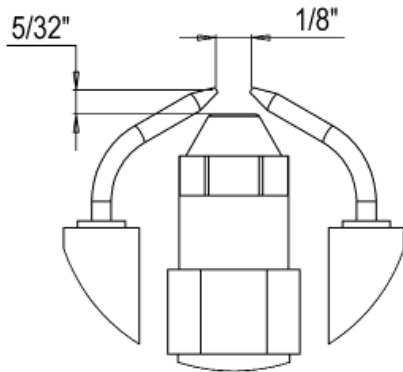


| Ref. | Part   | Description                     | Qty. |
|------|--------|---------------------------------|------|
| 1    | 451060 | STAND FRAME ASSEMBLY            | 2    |
| 2    | 451302 | ASSEMBLY, COIL, HK 150          | 1    |
| 3    | 444816 | BELL REDUCER, 1 x 1/2" GLVD     | 2    |
| 4    | 444820 | ELBOW, 1" 90D STREET GLVD       | 1    |
| 5    | 444822 | 1" GALV, HOSE BARB              | 2    |
| 6    | 444740 | 1" GALVANIZED CLOSE NIPPLE      | 1    |
| 7    | 444850 | CROSS, 1 x 1 x 1 GLVD           | 1    |
| 8    | 444866 | PLUG, 1" NPT GLVD               | 1    |
| 9    | 446827 | STREET ELBOW 1" 45 DEGREE GLVD  | 1    |
| 10   | 444817 | REDUCER BUSHING, 1" x 1/2" GLVD | 1    |
| 11   | 446543 | HIGH LIMIT AQUASTAT WELL        | 1    |
| 12   | 446542 | AQUASTAT, HIGH LIMIT HONELYWELL | 1    |
| 13   | 446260 | CONNECTOR, 1/2" STRESS RELIEF   | 1    |
| 14   | 225990 | BOLT, HEX HEAD, 5/16 x 1-1/4    | 8    |
| 15   | 174990 | WASHER, 5/16                    | 4    |
| 16   | 176220 | WASHER, 5/16, SPRING            | 4    |
| 17   | 227831 | NUT, HEX, NYLON-INSERT 5/16     | 4    |
| 18   | 112510 | NUT, LOCK CONDUIT 1/2           | 1    |

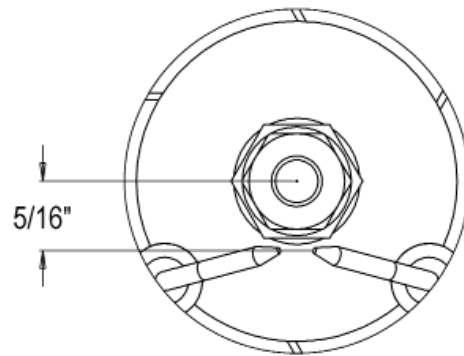
# Burner Assembly, HK 300



# Burner Assembly, HK 300 - Cont'd



**PARTIAL SIDE VIEW**



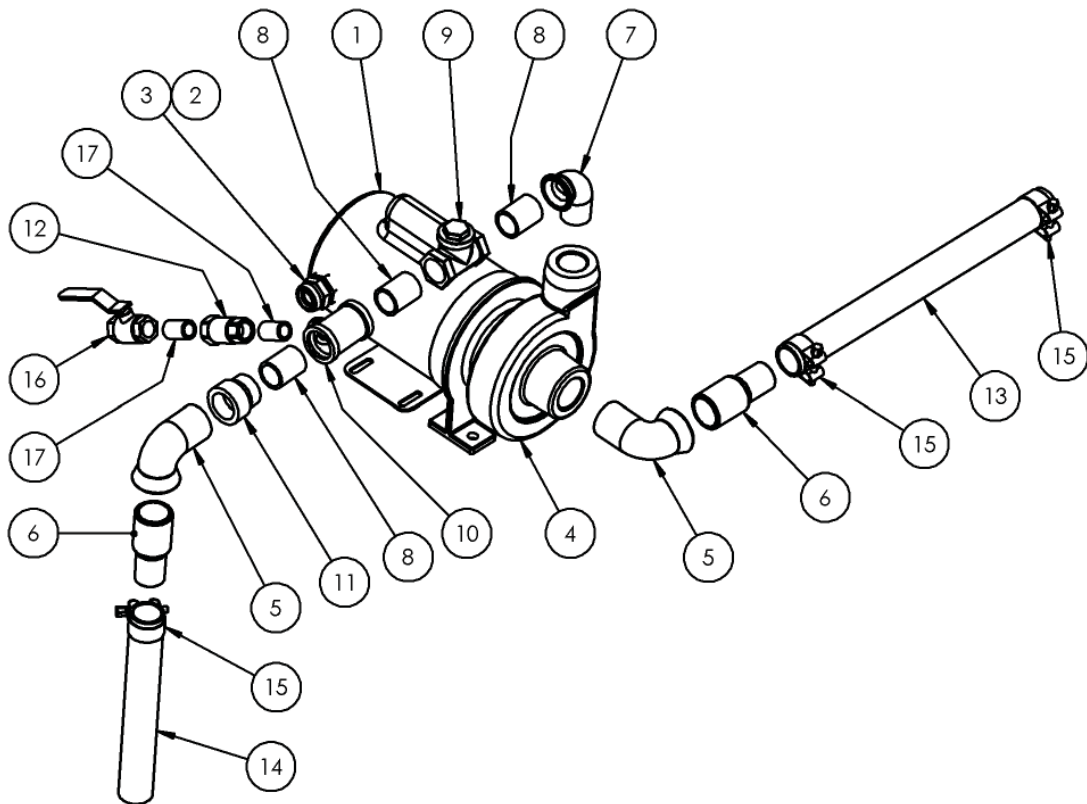
**PARTIAL TOP VIEW**

SETUP AT INSTALLATION OF ITEM 22 AND 23

| Ref. | Part   | Description                                 | Qty. |
|------|--------|---|------|
| 1    | 449048 | BURNER CHASSIS                              | 1    |
| 2    | 449001 | BURNER, FUEL PUMP 3450 RPM, 3 GPH           | 1    |
| 3    | 449032 | BURNER, FLEXIBLE COUPLING                   | 1    |
| 4    | 449024 | BURNER, FAN MOTOR                           | 1    |
| 5    | 449014 | TRANSFORMER, IGNITOR                        | 1    |
| 6    | 446491 | SENSOR, CAD CELL LEAD                       | 1    |
| 7    | 446490 | SENSOR, PRIMARY CONTROL RELAY               | 1    |
| 8    | 444814 | ADAPTER, 1/8 NPT x 1/4" MALE                | 1    |
| 9    | 444032 | DISCONNECT, 1/4" FEMALE QUICK               | 1    |
| 10   | 444021 | NIPPLE, 1/4 NPT x 3/8" BRSS HOSE            | 1    |
| 11   | 444042 | NIPPLE, 1/4 NPT x 1/4" BRSS HOSE            | 1    |
| 12   | 446260 | CONNECTOR, 1/2" STRESS RELIEF               | 2    |
| 13   | 112510 | NUT, LOCK CONDUIT 1/2                       | 2    |
| 14   | 162830 | 8-18 X 3/4 HWH SCREW                        | 2    |
| 15   | 446766 | BURNER, RETENTION HEAD                      | 1    |
| 16   | 444615 | BURNER, DRAWER ASSEMBLY - HK 150            | 1    |
| 17   | 449028 | BURNER, FAN SQUIRREL CAGE                   | 1    |
| 18   | 446768 | BURNER, AIR BAND                            | 1    |
| 19   | 446794 | SOLENOID, FUEL                              | 1    |
| 20   | 446615 | BURNER DRAWER, ALKOTA                       | 1    |
| 21   | 449053 | NOZZLE, FUEL, 1.0 GPH 80D A                 | 1    |
| 21*  | 449216 | NOZZLE, FUEL, 0.8 GPH 80D A (High Altitude) | 1    |
| 22   | 449003 | BURNER, ELECTRODE                           | 1    |
| 23   | 449030 | BURNER, ELECTRODE                           | 1    |

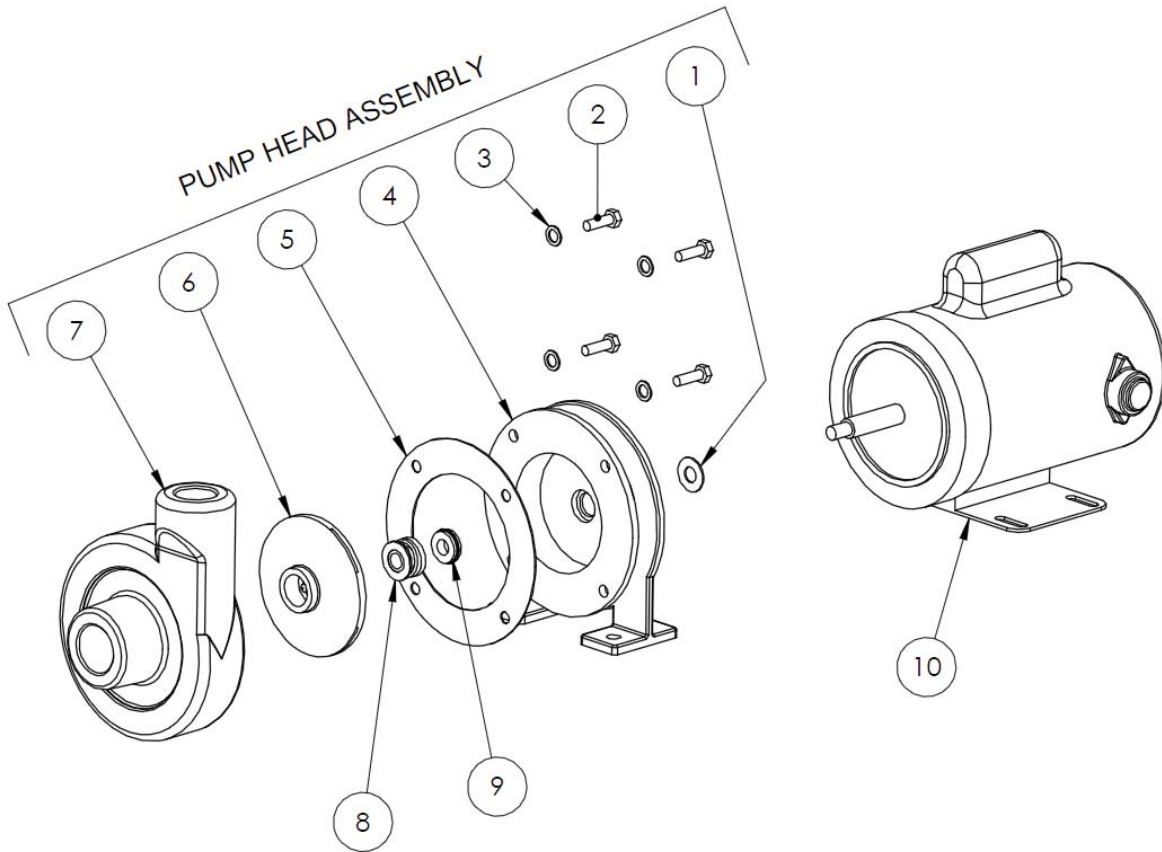


# Field Pump, HK 300



| Ref. | Part   | Description                     | Qty. |
|------|--------|---------------------------------|------|
| 1    | 219110 | MOTOR, 1/2 HP 115/230V          | 1    |
| 2    | 446260 | CONNECTOR, 1/2" STRESS RELIEF   | 1    |
| 3    | 112510 | NUT, LOCK CONDUIT 1/2           | 1    |
| 4    | 448045 | PUMPHEAD, 1/2 HP (See Page B-7) | 1    |
| 5    | 444250 | ELBOW, STREET 1 1/4" 90D GLVD   | 2    |
| 6    | 444330 | HOSE BARB, 1-1/4" GLVD          | 2    |
| 7    | 444820 | ELBOW, 1" 90D STREET GLVD       | 1    |
| 8    | 444740 | 1" GALVANIZED CLOSE NIPPLE      | 3    |
| 9    | 444811 | 1" BRASS SWING CHECK VALVE      | 1    |
| 10   | 444821 | 1" x 1" x 1/2" GALVANIZED TEE   | 1    |
| 11   | 446800 | BUSHING, REDUCER 1-1/4 x 1      | 1    |
| 12   | 444731 | VALVE, 1/2" BRASS IN-LINE CHECK | 1    |
| 13   | 442162 | HOSE, 1-1/4", SUCTION           | 1    |
| 14   | 446815 | HOSE, 1-1/4", 150 PSI           | 1    |
| 15   | 444810 | T-BOLT, 1" CLAMP                | 3    |
| 16   | 444120 | VALVE, BALL 1/2"                | 1    |
| 17   | 444440 | NIPPLE, 1/2" CLOSE GLVD         | 2    |

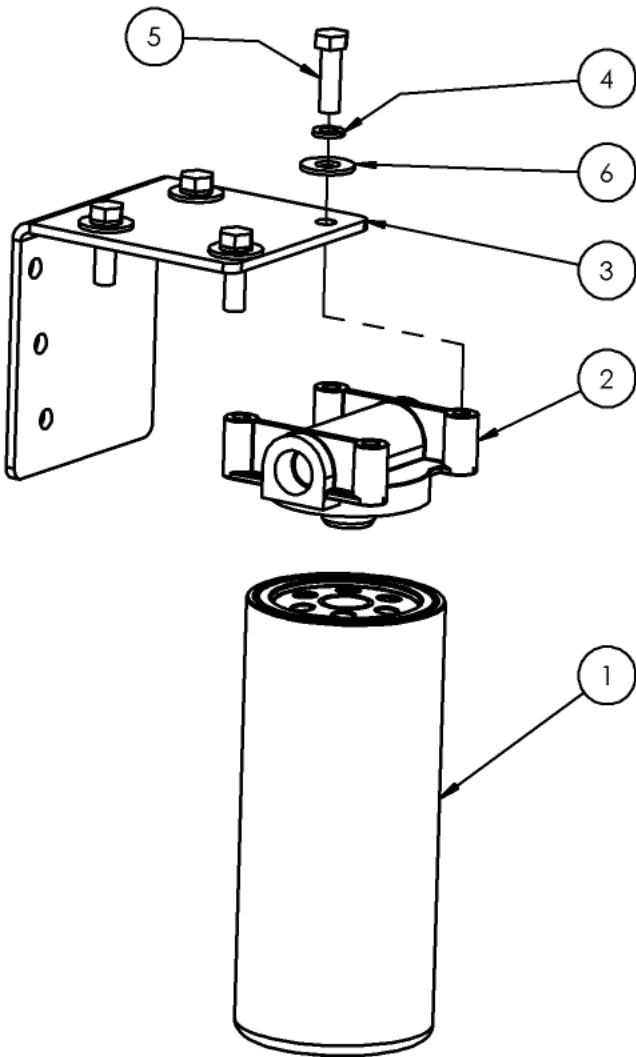
# Pump Assembly Breakdown, HK300



| Ref. | Part          | Description                                 | Qty. |
|------|---------------|---|------|
| --   | 448045 **     | PUMP HEAD ASSEMBLY, FAC-50-K                | 1    |
| 1    | 449002        | FINGER SEAL                                 | 1    |
| 2    | 225980        | BOLT, 5/16 UNC                              | 4    |
| 3    | 175500        | WASHER, 5/16                                | 4    |
| 4    | ---           | PUMP BODY, MOTOR SIDE                       | 1    |
| 5    | 449012        | GASKET, PUMP                                | 1    |
| 6    | ---           | PUMP Impeller                               | 1    |
| 7    | ---           | PUMP BODY, CAVITY SIDE                      | 1    |
| 8    | ---           | SEAL, MOTOR SIDE                            | 1    |
| 9    | ---           | SPRING SEAL                                 | 1    |
| 10   | 219110        | MOTOR, 1/2HP 1-115/230V                     | 1    |
|      | <b>449059</b> | <b>SEAL KIT</b> (Includes items: 8, and 9)  |      |
|      | **            | PUMP HEAD ASSEMBLY (Includes items: 1 to 7) |      |

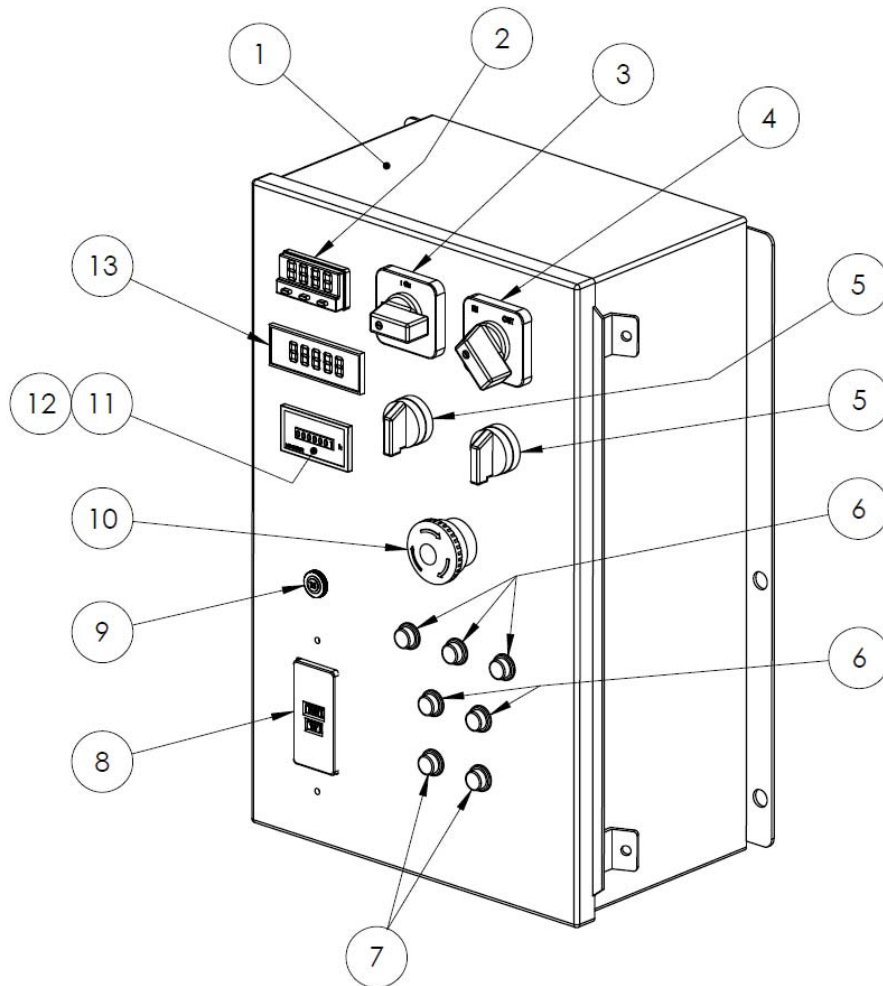


# Filter Assembly, HK300



| Ref. | Part   | Description            | Qty. |
|------|--------|------------------------|------|
| 1    | 445157 | FUEL FILTER            | 1    |
| 2    | 445156 | FUEL FILTER HEAD       | 1    |
| 3    | 446821 | BRACKET, FUEL FILTER   | 1    |
| 4    | 176220 | WASHER, 5/16, SPRING   | 4    |
| 5    | 226220 | BOLT, HEX HEAD 3/8 UNC | 4    |
| 6    | 174986 | WASHER, 3/8            | 4    |

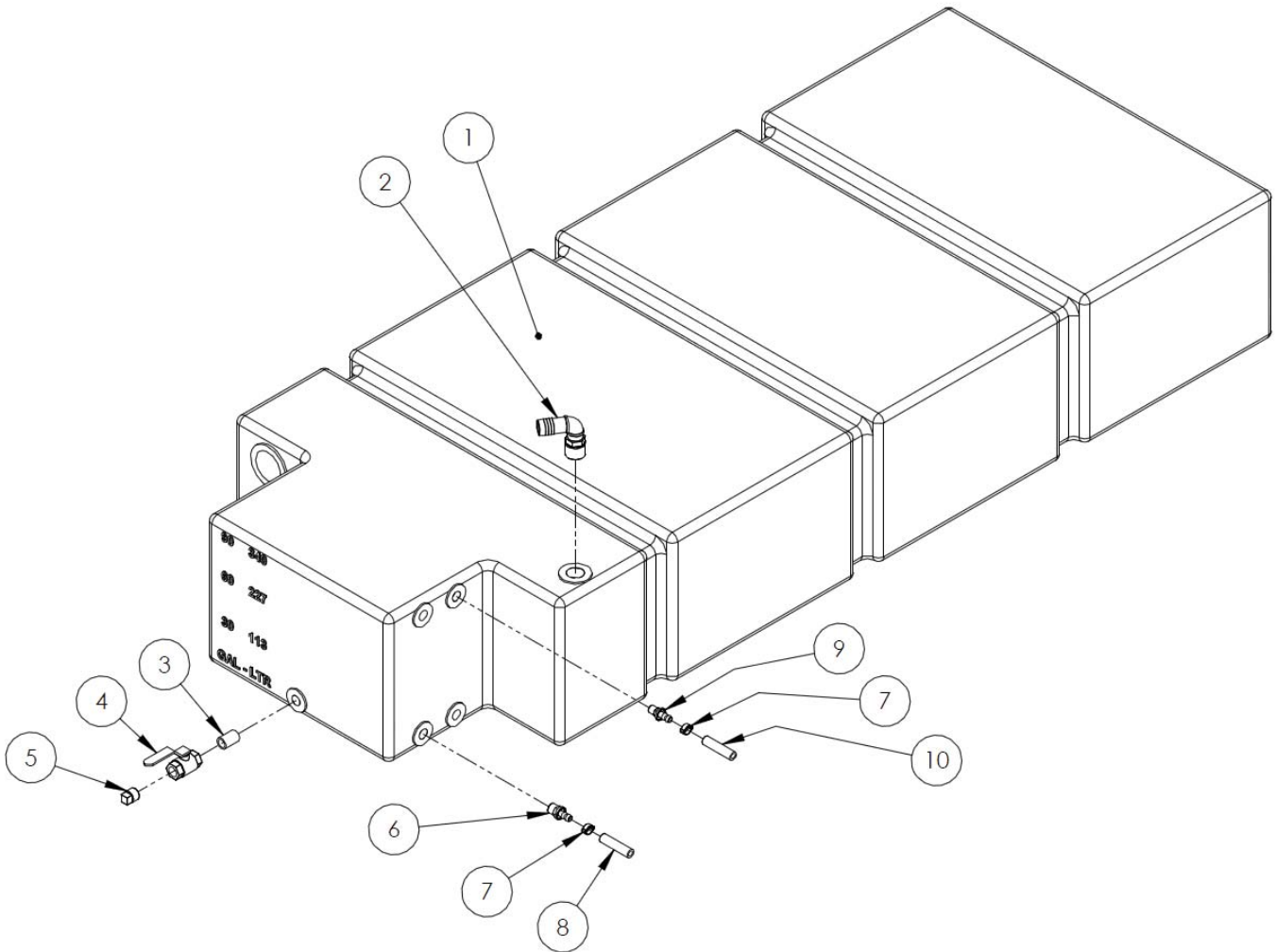
# Control Box Assembly, HK 300



| Ref. | Part   | Description             | Qty. |
|------|--------|-------------------------|------|
| 1    | 451350 | BOX, ELECTRICAL         | 1    |
| 2    | 450093 | TEMPERATURE CONTROLLER  | 1    |
| 3    | 446513 | SWITCH, CIRCUIT POWER   | 1    |
| 4    | 446514 | SWITCH, REEL DIRECTION  | 1    |
| 5    | 446517 | SWITCH                  | 2    |
| 6    | 446130 | LIGHT, INDICATOR, AMBER | 5    |
| 7    | 446140 | LIGHT, INDICATOR, RED   | 2    |
| 8    | 446110 | GROUND FAULT            | 1    |
| 9    | 446010 | CIRCUIT BREAKER, 15 AMP | 1    |
| 10   | 446527 | SWITCH, EMERGENCY STOP  | 1    |
| 11   | 446120 | HOUR METER              | 1    |
| 12   | 446125 | HOUR METER, FACE PLATE  | 1    |
| 13   | 446519 | RETURN READOUT          | 1    |



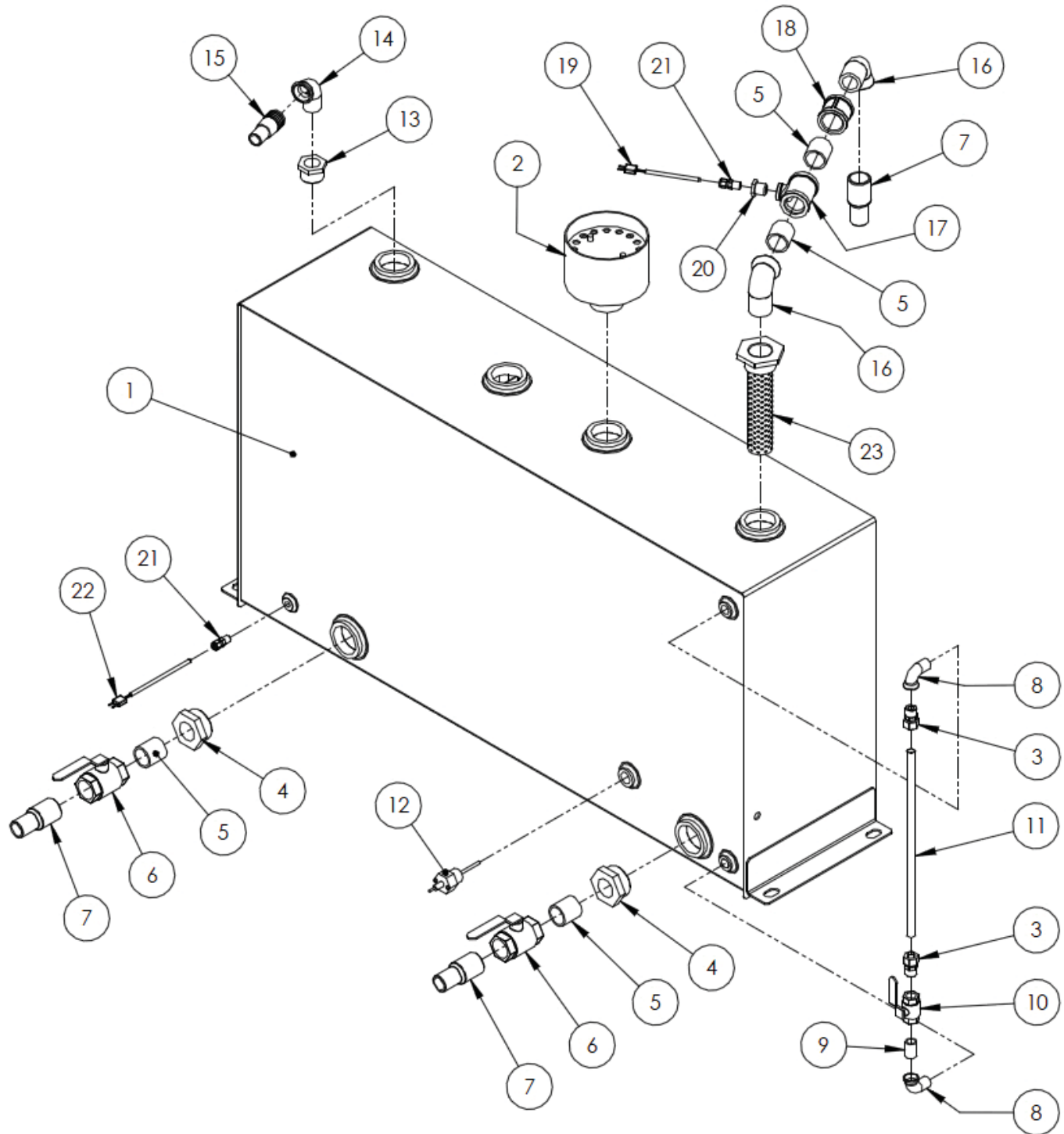
# Fuel Tank Assembly, HK 300



| Ref. | Part   | Description                       | Qty. |
|------|--------|-----------------------------------|------|
| 1    | 451150 | FUEL TANK, DIESEL                 | 1    |
| 2    | 444829 | ELBOW, 1" NPT X 1" 90 DEG. PVC    | 1    |
| 3    | 444440 | NIPPLE, 1/2 CLOSE, GLVD           | 1    |
| 4    | 444120 | VALVE, BALL 1/2"                  | 1    |
| 5    | 444083 | PLUG, 1/2" NPT, GLVD              | 1    |
| 6    | 444022 | NIPPLE, 3/8 NPT x 3/8", LOL BRSS  | 1    |
| 7    | 444825 | CLAMP, 3/8"                       | 2    |
| 8    | 449203 | HOSE, FUEL SUPPLY (10 FT. LENGTH) | 1    |
| 9    | 444021 | NIPPLE, 1/4 NPT x 3/8", BRSS HOSE | 1    |
| 10   | 449204 | HOSE, FUEL SYSTEM (10 FT. LENGTH) | 1    |

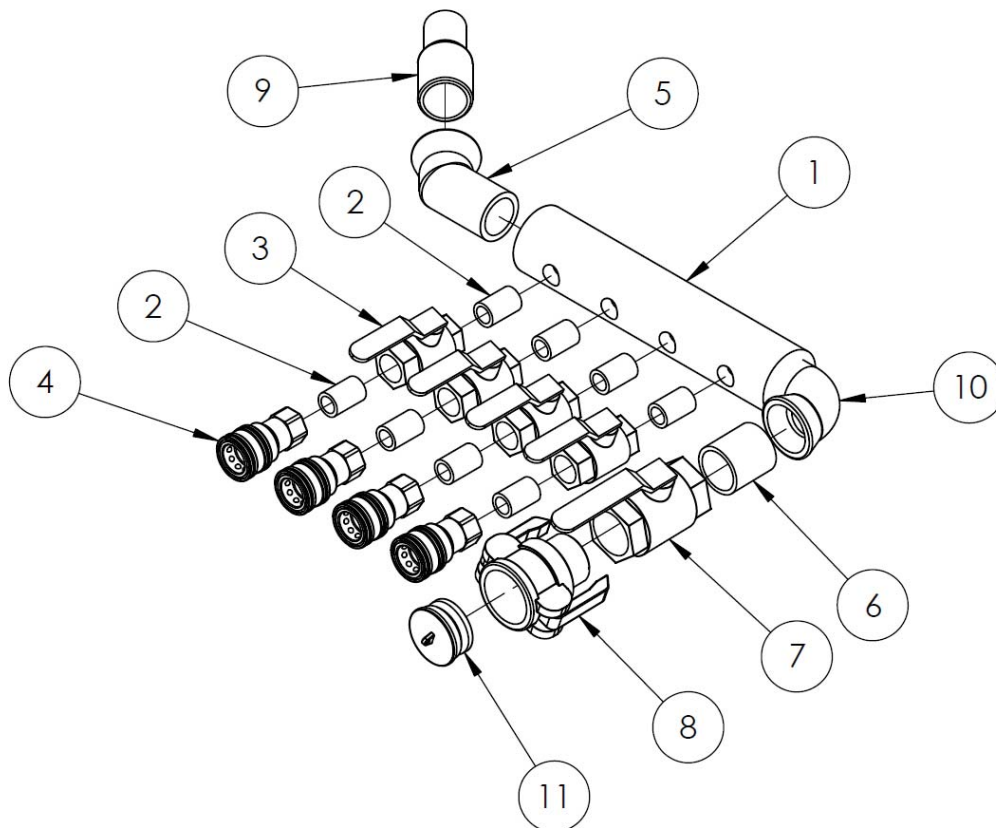


# Glycol Tank Assembly, HK 300





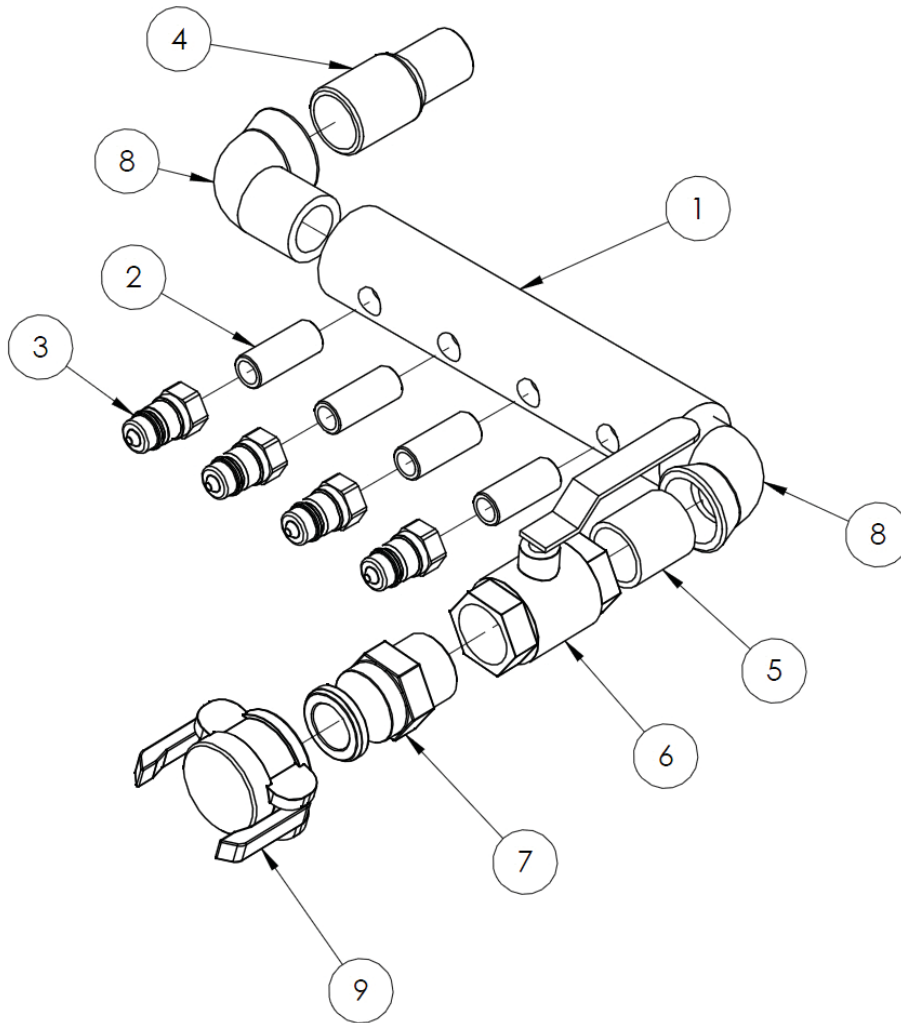
# Supply Manifold, HK 300



| Ref. | Part   | Description                        | Qty. |
|------|--------|------------------------------------|------|
| 1    | 451200 | MANIFOLD, 4 PLACE                  | 1    |
| 2    | 444440 | NIPPLE, 1/2 CLOSE, GLVD            | 8    |
| 3    | 444081 | VALVE, BALL 3/4 NPT, BRASS         | 4    |
| 4    | 444901 | QUICK CONNECT, 1/2, FEMALE         | 4    |
| 5    | 444750 | ELBOW, 1-1/4 X 45 DEG STREET, GLVD | 1    |
| 6    | 444480 | CLOSE NIPPLE, 1-1/4, GLVD          | 1    |
| 7    | 444110 | VALVE, BALL 1-1/4                  | 1    |
| 8    | 444751 | CAMLOCK, 1-1/4 NPT MAL X 1-1/4 FEM | 1    |
| 9    | 444330 | HOSE BARB, 1-1/4, GLVD             | 1    |
| 10   | 444250 | ELBOW, STREET 1-1/4 X 90 DEG, GLVD | 1    |
| 11   | 444086 | PLUG, 1-1/4, CAMLOCK, MALE         | 1    |

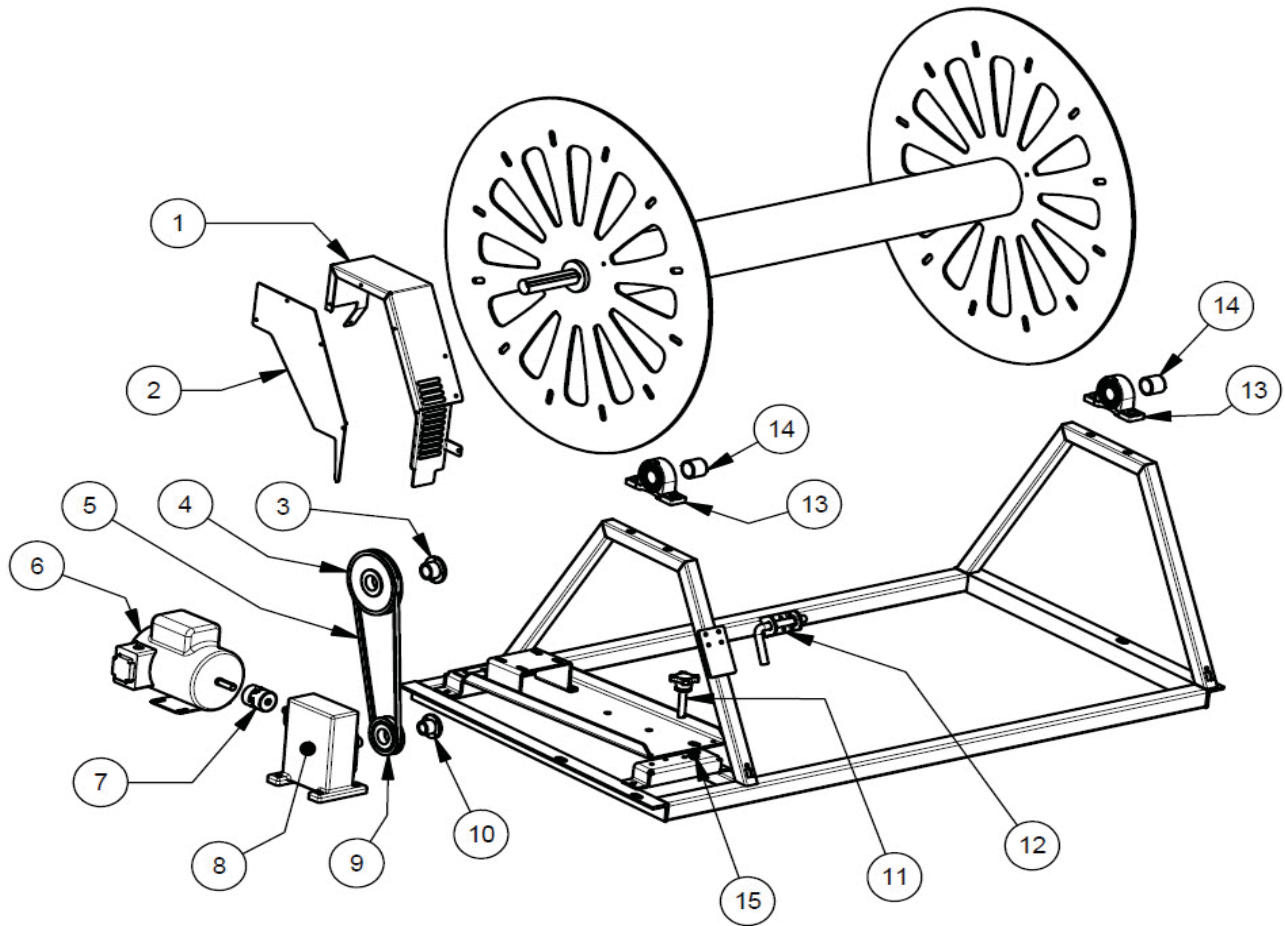


# Return Manifold, HK 300



| Ref. | Part   | Description                       | Qty. |
|------|--------|-----------------------------------|------|
| 1    | 451200 | MANIFOLD, 4 PLACE HK150           | 1    |
| 2    | 444805 | NIPPLE, 1/2 X 2, GLVD             | 4    |
| 3    | 444900 | QUICK CONNECT, 1/2, MALE          | 4    |
| 4    | 444330 | HOSE BARB, 1-1/4, GLVD            | 1    |
| 5    | 444480 | CLOSE NIPPLE, 1-1/4, GLVD         | 1    |
| 6    | 444110 | BALL VALVE, 1-1/4                 | 1    |
| 7    | 444754 | CAMLOCK, 1-1/4NPT X 1-1/4 MALE    | 1    |
| 8    | 444250 | ELBOW, STREET 1-1/4 X 90DEG, GLVD | 2    |
| 9    | 444087 | PLUG, 1-1/4, CAMLOCK, FEM         | 1    |

# Reel Assembly, HK 300

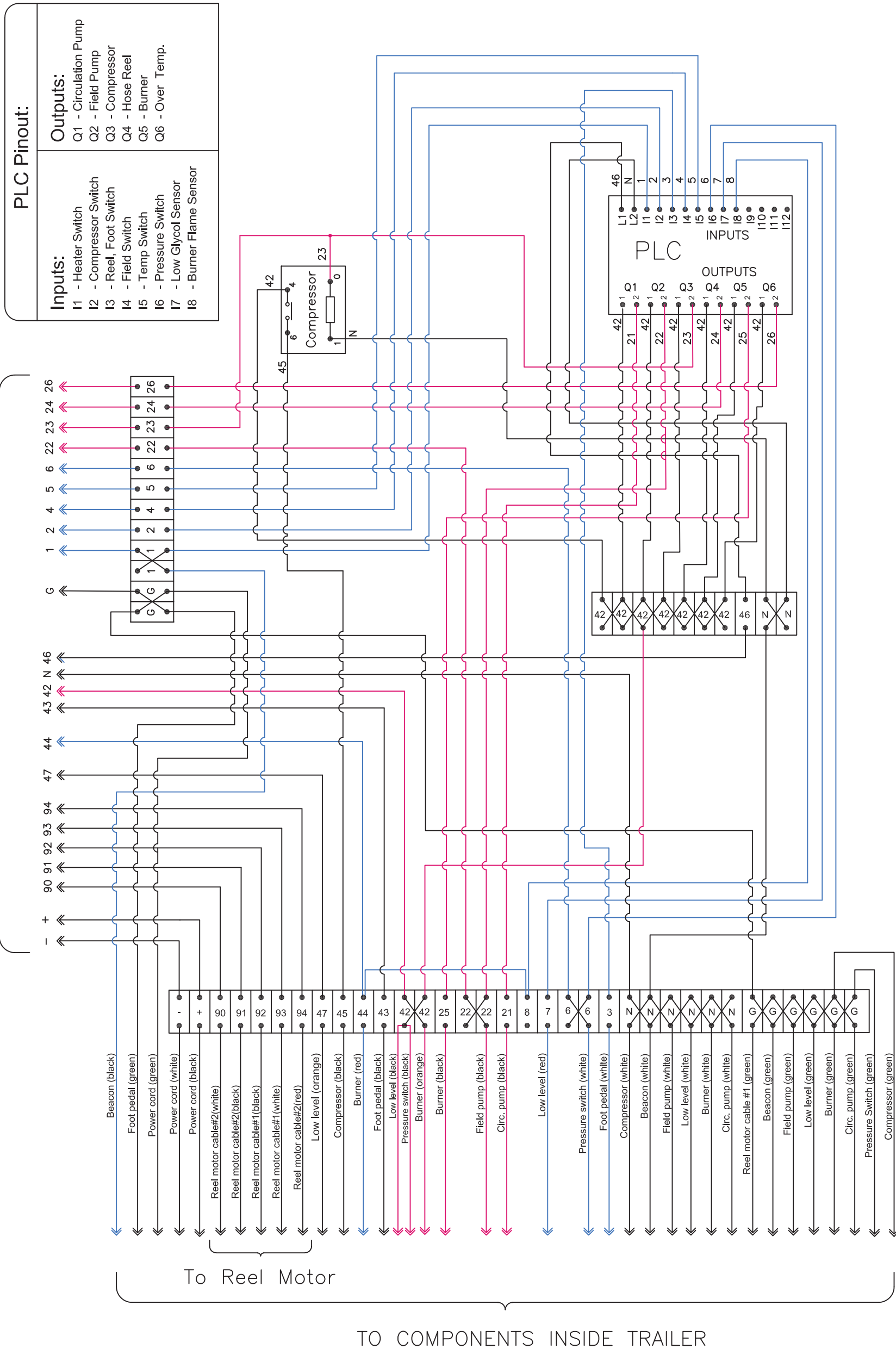


| Ref. | Part   | Description              | Qty. |
|------|--------|--------------------------|------|
| 1    | 448232 | BELT GUARD               | 1    |
| 2    | 448240 | BELT GUARD, ACCESS PANEL | 1    |
| 3    | 448263 | BUSHING, REEL SHAFT      | 1    |
| 4    | 448267 | PULLEY, REEL SHAFT       | 1    |
| 5    | 239592 | V-BELT                   | 1    |
| 6    | 219210 | MOTOR, 1/2 HP            | 1    |
| 7    | 448254 | COUPLING                 | 1    |
| 8    | 496644 | GEAR BOX                 | 1    |
| 9    | 448265 | PULLEY, GEAR BOX         | 1    |
| 10   | 448264 | BUSHING, GEAR BOX        | 1    |
| 11   | 448256 | KNOB, BELT TENSIONER     | 1    |
| 12*  | 700405 | REEL LOCK PIN            | 1    |
| 13   | 451309 | PILLOW BLOCK             | 2    |
| 14   | 451310 | BEARING INSERT           | 2    |
| 15   | 448257 | SPRING, BELT TENSIONER   | 1    |

*\*Please call 1 800 661 0304 for correct sizing*



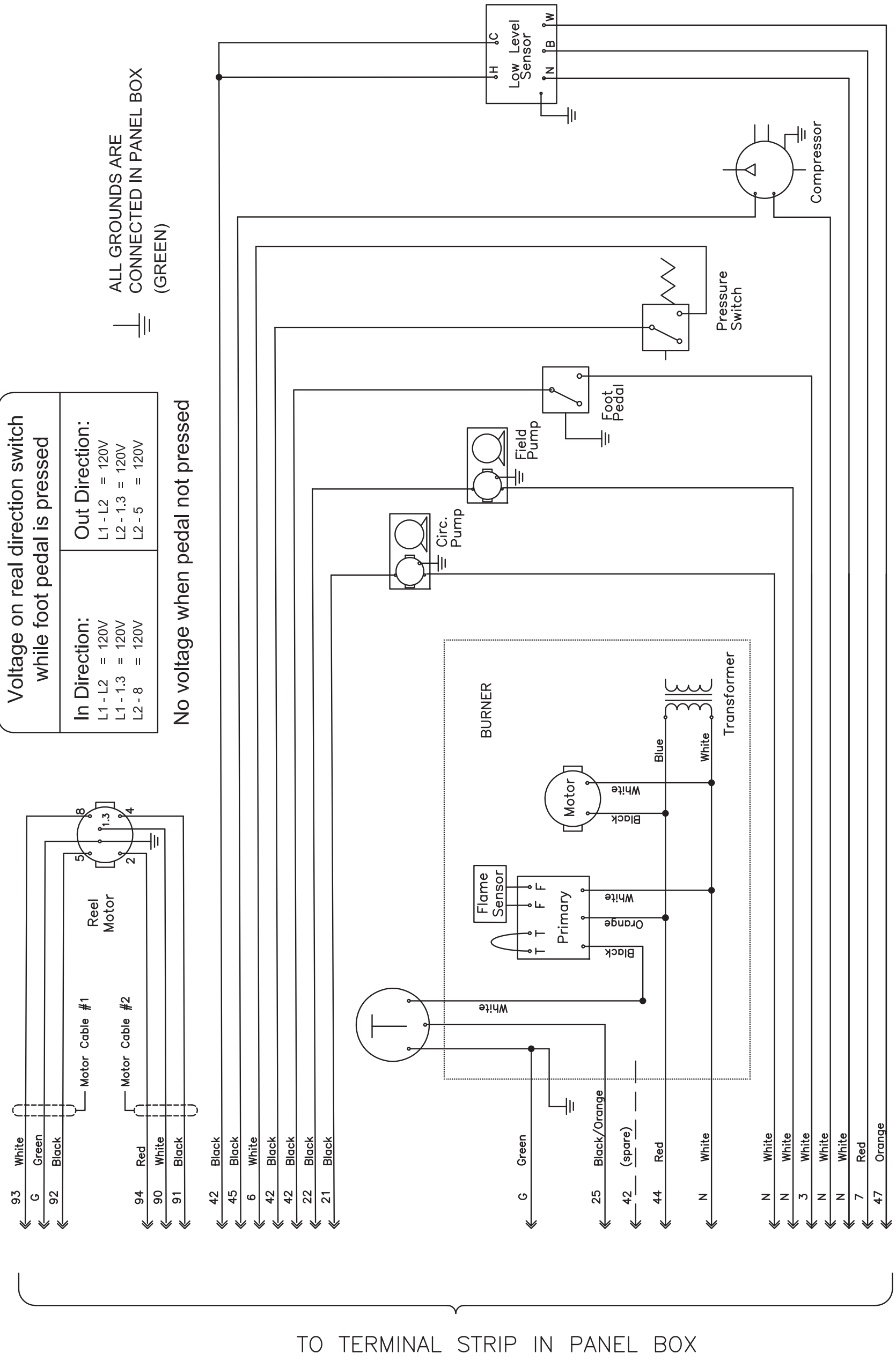
TO PANEL BOX DOOR



To Reel Motor

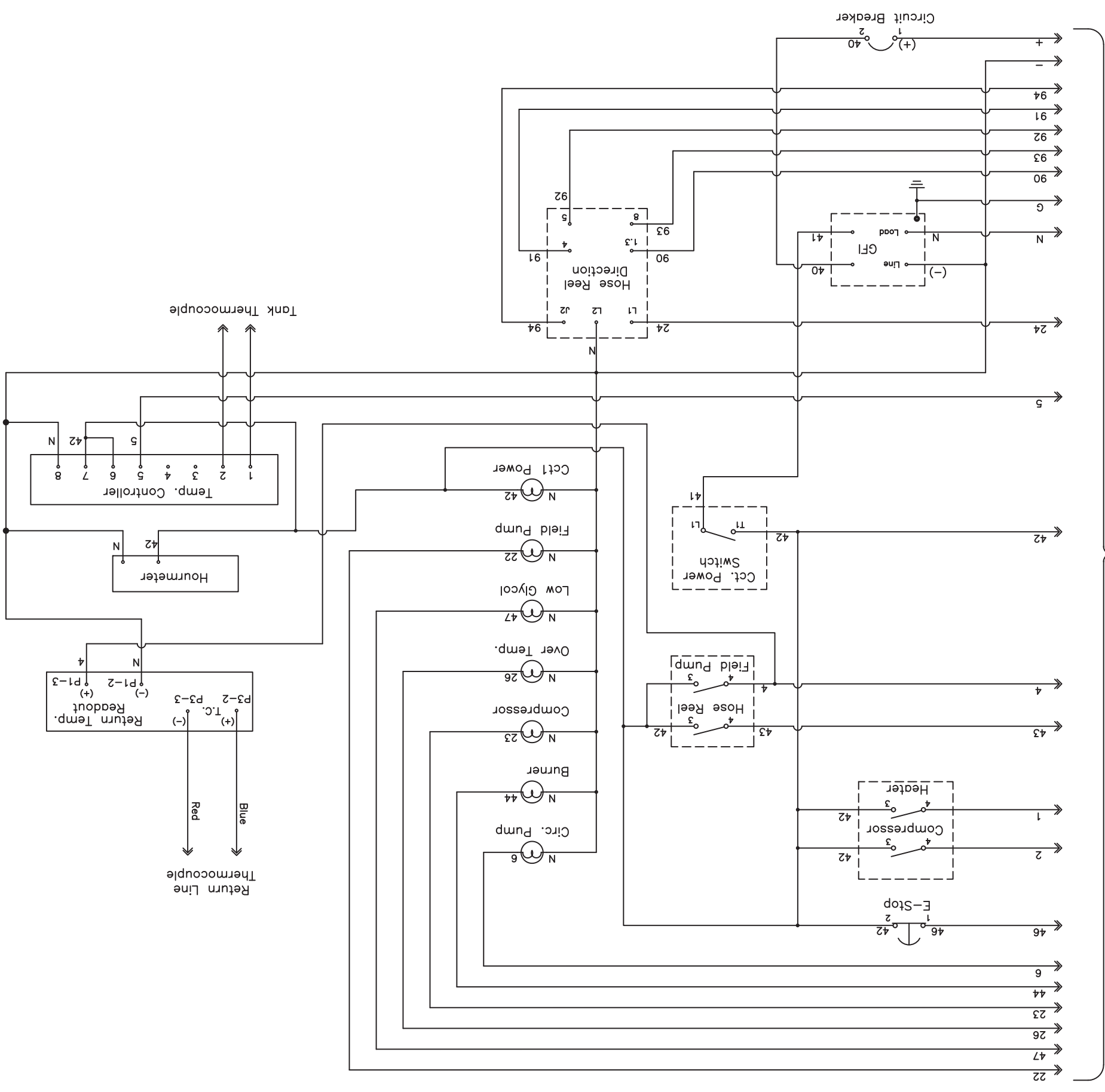
TO COMPONENTS INSIDE TRAILER

# HK300 PANEL BOX ELECTRICAL SCHEMATIC



# HK300 INSIDE TRAILER ELECTRICAL SCHEMATIC

# HK300 PANEL DOOR ELECTRICAL SCHEMATIC



TO PANEL BOX TERMINAL STRIPS



Product Brochure



Contact Us

# **HEAT KING**

Toll Free: 1-800-661-0304  
Phone: 204-885-5800  
Fax: 204-885-7557

P.O. Box 234 Station L  
Winnipeg, Manitoba R3H 0Z5  
Canada

