

REPLACEMENT PARTS SUITABLE FOR
THERMAL DYNAMICS®

TORCH	POWER SUPPLY	PAGE
PCH20/30/50/55/100	DYNAPAK 110™,PAK®2XT,PAK®3, PAK®5,PAK®10XR(PCH-100).....	45,46
PCH/M 10/25/38	Drag-Gun®,PakMaster®25,EconoPak®25.....	47
PCH/M 28/PCH-26	PakMaster®50XL,PakMaster®50XL Plus, EconoPak®50.....	48
PCH/M 35/40	Stak Pak®35,PakMaster®50.....	49
PCH/M75,76	PAKMASTER®75/75XL PLUS,100XL PLUS, EconoPak®100, Cutmaster™80XL™.....	50
PCH42/62/102	(various).....	51
PCH/M 51	PAK®3XR™,5XR™,5XT™,6XR™,625XR™, 750XR™,Dynapak 4Xi™,6Xi™.....	52
PCH/M 52	PAK®5XR™,6XR™,7XR™,8XR™,10XR™, 625XR™,750XR™,1000XR™,1250XR™.....	53
4B/4BT	PAK®5/10/22.....	54
PCH/M 6B	PAK®44,45.....	55
PCH/M 150	MERLIN®15XC.....	56
MAXIMIZER®300/ MERLIN®6000/ MERLIN®6000GST/ PCH/M 120	MERLIN®1000/3000/6000, PAK®15XC, PakMaster®150XL.....	57
PWH/M 2A/PWH/M 3A/ PWH/M 4A	ULTIMA™150.....	58-60
PWM 300	ULTIMA™150.....	61

Thermal Dynamics®, Dynapak110™, PAK®2XT, PAK®3, PAK®5, PAK®10XR, Drag-Gun®, PakMaster®25, PakMaster®50XL, PakMaster®50XL Plus, EconoPak®25, EconoPak®50, Stak Pak®35, PakMaster®50, PAKMASTER®75, PAKMASTER®75XL, PAKMASTER®75XL PLUS, PAKMASTER®100XL PLUS, PakMaster®150XL, CutMaster™80XL™, EconoPak®100, PAK®3XR™, PAK®5XR™, PAK®6XR™, PAK®625XR™, PAK®750XR™, PAK®1000XR™, PAC®5XT™, PAK®1250XR™, PAKMASTER®100, PAK®5, PAK®10, PAK®22, PAK®44, PAK®45, MERLIN®15XC, MAXIMIZER®300, MERLIN®6000, MERLIN®6000GST, MERLIN®1000, MERLIN®3000, MERLIN®6000, PAK®15XC, ULTIMA™ are registered trademarks of Thermal Dynamics Corp.

REPLACEMENT PARTS SUITABLE FOR
THERMAL DYNAMICS®

PCH-20 TORCH

Item	Part No	Ref. No.	Description	Std. Pkg	Item	Part No.	Ref. No	Description	Std. Pkg.
1.	T-0106	8-3214	Shield Cup	2	5.	T-0102	8-3220	TMT-20 Hand Torch	1
2.	T-0105	8-3218	Tip	10	6.	T-0108	8-0531	O-Ring	10
3.	T-0104	8-3233	Gas Distributor	10	NS	T-0107	8-1160	Handle with Switch	1
4.	T-0103	8-4259	Electrode	10					

PCH/M-30

Item	Part No	Ref. No.	Description	Std. Pkg	Item	Part No.	Ref. No	Description	Std. Pkg.
1.	T-0113	9-5500	Shield Cup	10	5.	T-0110	9-5512	TMT-30 Hand Torch	1
2.	T-0112	9-5501	Tip	10	5a.	T-0109	9-5509	TMT-30 Machine Torch	1
	T-0105	9-5581	Tip, Long	10	6.	T-0114	8-0530	O-Ring	10
3.	T-0104	9-5502	Gas Distributor	10	NS	T-0115	9-5505*	Spring	5
4.	T-0111	9-5503	Electrode	10	NS	T-0117	9-5522	Switch	1
	T-0103	9-5582	Electrode, Long	10	NS	T-0118	9-5523	Sheath	1

Item	Part No	Ref. No.	Description	Std. Pkg	Item	Part No.	Ref. No	Description	Std. Pkg.
1.	T-0814	9-5514	Handle	1	10.	T-0872	9-5515	Leads Sleeving, 25'	1
2.	T-0117	9-5522	Switch	1		T-0873	9-5516	Leads Sleeving, 50'	1
3.	T-0181	9-5523	Sheath	1	11.	T-0817	9-5517	Negative Lead, 25'	1
4.	T-0918	8-5008	Fitting, Torch End	1		T-0818	9-5518	Negative Lead, 50'	1
5.	T-0922	8-5015	Nut, Console End	1	12.	T-0819	9-5519	Control Cable, 25'	1
6.	T-0919	8-5010	Fitting, Console End	1		T-0820	9-5520	Control Cable, 50'	1
7.	T-1067	9-3295	Cable Clamp	1	13.	T-0807	4-5028	Torch Leads, 25'	1
8.	T-0864	9-3294	Control Cable Plug	1		T-0808	4-5029	Torch Leads, 50'	1
9.	T-0865	9-3296	Pin (for 9-3294)	1					

PCH-50

Item	Part No	Ref. No.	Description	Std. Pkg	Item	Part No.	Ref. No	Description	Std. Pkg.
1.	T-0130	8-5519	Crown Shield Cup	5	7.	T-0124	8-5506*	Collet	1
2.	T-0129	8-5505	Shield Cup	10	8.	T-0123	8-5504	O-Ring, inner	10
3.	T-0128	8-5507*	Tip	10	9.	T-0122	8-0533	O-Ring, Handle	10
4.	T-0127	8-5520	Liner w/O-Rings	1	10.	T-0121	8-5501	TMT-50 Hand Torch	1
5.	T-0126	8-5510	Sleeve	5	11.	T-0120	8-5503	Spring	5
6.	T-0125	8-5508	Electrode	10	12.	T-0119	8-5502*	Collet Button w/O-Ring	1

Item	Part No	Ref. No.	Description	Std. Pkg	Item	Part No.	Ref. No	Description	Std. Pkg.
1.	T-0835	8-5511	Handle	1	14.	T-0843	T-0843	Positive Lead, 25'	1
2.	T-0827	8-1780	Switch	1		T-0844	T-0844	Positive Lead, 50'	1
3.	T-0155	8-1322	Sheath	1	15.	T-0841	T-0841	Negative Lead, 25'	1
4.	T-0828	8-2069	Fitting, Torch End (+)	1		T-0842	T-0842	Negative Lead, 50'	1
5.	T-0889	8-5013	Ferrule (+)	1	16.	T-0845	T-0845	Control Cable, 25'	1
6.	T-0922	8-5015	Nut, Console End (+)	1		T-0846	T-0846	Control Cable, 50'	1
7.	T-0829	8-3034	Gland, Console End (+)	1	17.	T-1068	T-1068	Cable Clamp	1
8.	T-0824	8-0337	Ferrule, Torch End (-)	1	18.	T-0847	T-0847	Connector	1
9.	T-0823	8-0336	Nut, Torch End (-)	1	19.	T-0887	T-0887	Leads Sleeving, 25'	1
10.	T-0830	8-5009	Gland, Torch End (-)	1		T-0896	T-0896	Leads Sleeving, 50'	1
11.	T-0833	8-5014	Ferrule (-)	1	NS	T-0836	T-0836	Tip Wrench	1
12.	T-0892	8-5518	Nut, Console End (-)	1	NS	T-0837	T-0837	O-Ring Tool	1
13.	T-0919	8-5010	Gland, Console End (-)	1					

REPLACEMENT PARTS SUITABLE FOR
THERMAL DYNAMICS®

PCH-55 TORCH

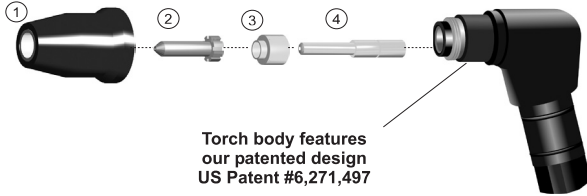
Item	Part No	Ref. No.	Description	Std. Pkg	Item	Part No.	Ref. No	Description	Std. Pkg.
NS	T-1168	9-5687	Shield Cup	10	NS	T-1171	9-5701	Torch Body	1
NS	T-1169	9-5722	Crown Shield Cup	10	NS	T-0122	8-0533	O-Ring	10
NS	T-1170	9-5700	Tip	10	NS	T-0153	9-5636	Handle	1
NS	T-0150	9-5633	Electrode	10	NS	T-0181	9-5522	Switch	1
NS	T-0151	8-5525	O-Ring	10	NS	T-0155	8-1322	Retaining Sheath	1

PCH/M-100 TORCH

Item	Part No	Ref. No.	Description	Std. Pkg	Item	Part No.	Ref. No	Description	Std. Pkg.
	T-0140	8-1101	Crown Shield Cup	5	T-0134	9-4340		Electrode	5
	T-0139	9-4345*	Shield Cup, Machine	5	T-0133	8-1106		Liner w/O-Ring	1
	T-0138	8-1100	Shield Cup, Hand	10	T-0132	9-4339		Gas Distributor w/O-Ring	1
	T-0137	9-4343	Tip, 35 Amp	5	T-0131	8-1108		Electrode Holder w/O-Rings	1
	T-0136	9-4342	Tip, 70 Amp	5	T-0142	8-0538		O-Ring, Handle	10
	T-0135	9-4341	Tip, 100 Amp	5	T-0141	8-0556		O-Ring, Cup	10

REPLACEMENT PARTS SUITABLE FOR
THERMAL DYNAMICS®

PCH-10 TORCH



Item	Part No	Ref. No.	Description	Std. Pkg	Item	Part No.	Ref. No	Description	Std. Pkg.
1.	T-0272	9-6003	Shield Cup	1	4.	T-0103	9-6006	Electrode	10
2.	T-2307	9-6099	Tip, 12 Amp	1	5.	T-0267**	9-5807DURA	Hand DURA Torch 70°	1
3.	T-0269	9-6007	Gas Distributor	5		T-1075	9-5808	Hand Torch 90°	1

PCH-25/38 TORCH

Item	Part No	Ref. No.	Description	Std. Pkg	Item	Part No.	Ref. No	Description	Std. Pkg.
1.	T-0272	9-6003	Shield Cup	1		T-1332	9-6507	Gas Distributor, Long Life	5
NS T-0273	9-6004		Shield Cup, Crown, *9-6003 Req	1	4.	T-0103	9-6006	Electrode, Air	10
2.	T-2320	9-6093	Tip	10		T-1333	9-6506	Electrode, Air, Long Life	10
	T-1334	9-4476	Tip, Cutting	10	5.	T-0267**	9-5807 DURA	Hand Torch (70)	1
	T-1331	9-6501	Tip, Drag, Long Life	10		T-1075	9-5808	Hand Torch (90)	1
3.	T-0269	9-6007	Gas Distributor	5					

ACCESSORIES



PCH-25/38 TORCH

Item	Part No	Ref. No.	Description	Std. Pkg	Item	Part No.	Ref. No	Description	Std. Pkg.
1.	T-1079	9-5857*	Split Holder Kit (90)	1	NS T-1901	2-0250		Torch, 70° W/ Leads, 12.5'	1
	T-1617	9-6259*	Split Holder (70)	1	NS T-1902	2-0251		Torch 70° W/ Leads, 25'	1
2.	T-0122	8-0533	O-ring	10	NS T-2900	2-0252		Torch 90° W/ Leads, 12.5'	1
3.	T-1040	9-5636-1	Handle W/ Switch	1	NS T-2901	2-0253		Torch 90° W/ Leads, 25'	1
4.	T-1619	4-6067	Leads 12.5'	1	NS T-0584	2-0380		Torch 70° W/ Leads, 12.5'	1
	T-1620	4-6068	Leads 25'	1	NS T-0583	2-0381		Torch 70° W/ Leads, 25'	1
NS T-1081	9-6103		Pip Wire Assy	1	NS T-0586	2-0382		Torch 90° W/ Leads, 12.5'	1
NS T-3470	KPT25		Spare Parts Kit	1	NS T-0585	2-0383		Torch 90° W/ Leads, 25'	1

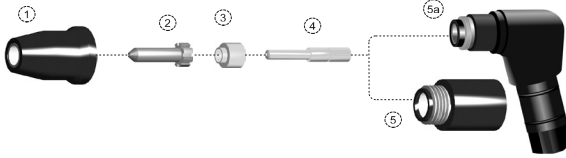
VERIFY POWER SUPPLY WHEN ORDERING

"UR" IS A UNIQUE DESIGN WHICH ENHANCES PERFORMANCE AND DIFFERS FROM OEM DESIGNS

THERMAL DYNAMICS® is a Registered Trademark of THERMAL DYNAMICS CORP. * OEM Manufactured Parts

**PCH/M28,
PCH-26 TORCHES**

**REPLACEMENT PARTS SUITABLE FOR
THERMAL DYNAMICS®**



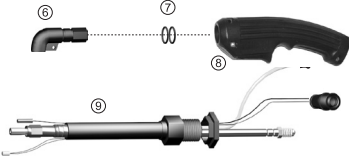
Torch body features our patented design US Patent #6,271,497

Item	Part No	Ref. No.	Description	Std. Pkg	Item	Part No.	Ref. No	Description	Std. Pkg.
1.	T-0272	9-6003	Shield Cup	1	3.	T-0269	9-6007	Gas Distributor	5
	T-0273	9-6004	Shield Cup, Crown,*9-6003 req'd	1		T-1332	9-6507	Gas Distributor, Long Life	5
	T-1328	9-6503	Shield Cup, Long Life	1	4.	T-0103	9-6006	Electrode	10
2.	T-0270	9-6000	Tip	10		T-1333	9-6506	Electrode, Long Life	10
	T-0271	9-6001	Tip, Drag	10	5.	T-0268	9-5809	Machine Torch	1
	T-1074	9-6002	Tip, Gouging	10	5a.	T-0267**	9-5807DURA	Hand DURA-Torch 70°	1
	T-2182	9-6502	Tip, Gouging, Long Life	10		T-1075	9-5808	Hand Torch 90°	1
	T-1329	9-6120	Tip, HD	10	NS	T-3471	KPT26	Parts Kit PCH26	1
	T-1330	9-6500	Tip, Stand Off, LongLife	10	NS	T-3472	KPT28	Parts Kit PCH28	1
	T-1331	9-6501	Tip, Drag, LongLife	10					

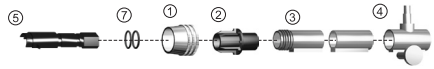
Note: PCH/M-28 uses only "LongLife" consumables.

ACCESSORIES

Hand Torch



Machine Torch



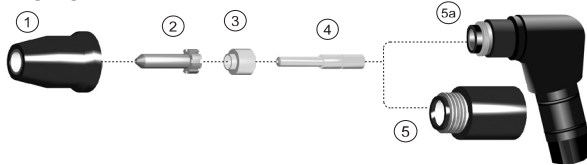
Item	Part No	Ref. No.	Description	Std. Pkg	Item	Part No.	Ref. No	Description	Std. Pkg.
1.	T-0157	8-4018	Nut	1		T-2888	4-6071	Torch Leads, 12.5'	1
2.	T-1076	8-4306*	Adaptor	1		T-0763	4-6072	Torch Leads, 25'	1
3.	T-1077	7-3207*	Mounting Tube	1	NS	T-0874	9-5636*	Handle	1
4.	T-0160	7-2827*	Pinion Assembly	1	NS	T-2141	9-1058*	Switch (for 9-5636)	1
5.	T-2272	9-6261*	Split Holder, Machine	1	NS	T-0155	8-1322*	Retaining Sheath	1
6.	T-1617	9-6259*	Split Holder, 70°	1	NS	T-2285	2-3501	Torch 70° w/ Leads 12.5'	1
	T-2284	9-6291*	Split Handle	1	NS	T-2286	2-3511	Torch 70° w/ Leads 25'	1
7.	T-0122	8-0533	O-Ring	10	NS	T-2287	2-3500	Torch 90° w/ Leads 12.5'	1
8.	T-1040	9-5636-1	Handle w/switch	1	NS	T-2288	2-3510	Torch 90° w/ Leads 25'	1
9.	T-2273	4-2895	Leads, Hand, 25'	1	NS	T-0734	2-5001	Torch 70° w/ Leads 25'	1
	T-2274	4-2999	Leads, Hand, 50'	1	NS	T-0735	2-5002	Torch 70° w/ Leads 50'	1
	T-2275	4-2997	Leads, Machine, 25'	1	NS	T-2892	2-5003	Torch 90° w/ Leads 25'	1
	T-2276	4-2998	Leads, Machine, 50'	1	NS	T-4551	2-5004	Torch 90° w/ Leads 50'	1

"UR" IS A UNIQUE DESIGN WHICH ENHANCES PERFORMANCE AND DIFFERS FROM OEM DESIGNS

THERMAL DYNAMICS® is a Registered Trademark of THERMAL DYNAMICS CORP. * OEM Manufactured Parts

**PCH/M-35, PCH/M-40
DURA-TORCH**

**REPLACEMENT PARTS SUITABLE FOR
THERMAL DYNAMICS®**

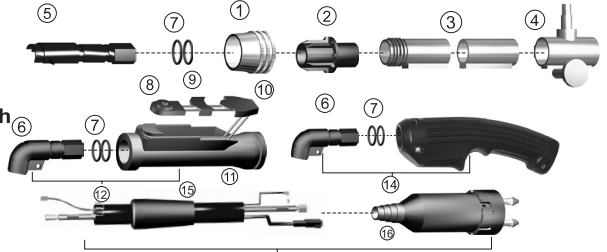


Torch body features
our patented design
US Patent #6,271,497

Item	Part No	Ref. No.	Description	Std. Pkg	Item	Part No.	Ref. No	Description	Std. Pkg.
1.	T-0272	9-6003	Shield Cup	1	T1331	9-6501		Tip, Drag, Long Life	10
	T-0273	9-6004	Shield Cup, Crown,*9-6003, Req'd	1	3.	T-0269	9-6007	Gas Distributor	5
	T-1328	9-6503	Shield Cup, Long Life	10		T-1332	9-6507	Gas Distributor, Long Life	5
2.	T-0270	9-6000	Tip	10	4.	T-0103	9-6006	Electrode	10
	T-1074	9-6001	Tip, Drag	10		T-1333	9-6506	Electrode, Long Life	10
	T-1329	9-6002	Tip, Gouging	10	5.	T-0268	9-5809	Machine Torch	1
	T-1330	9-6120	Tip, HD	10	5a.	T-1075	9-5808	Hand Torch 90°	1
	T-2182	9-6502	Tip Gouging, Long Life	10		T-0267**	9-5807DURA	Hand Dura Torch, 70°	1
	T-1331	9-6500	Tip, Stand Off, Long Life	10	NS	T-2216	KPT35	Parts Kit PCH35	1

ACCESSORIES Machine Torch

Hand Torch



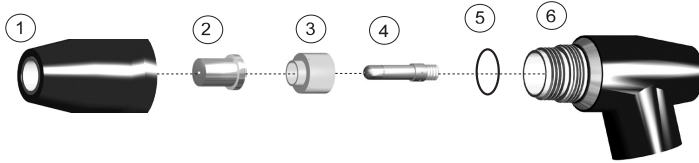
Item	Part No	Ref. No.	Description	Std. Pkg	Item	Part No.	Ref. No	Description	Std. Pkg.
1.	T-0157	8-4018	Nut	1	15.	T-1629	8-4304*	Boot	1
2.	T-1076	8-4306*	Adaptor	1	16.	T-1633	9-5836*	Quick Disconnect	1
3.	T-1077	7-3207	Mounting Tube	1	17.	T-1634	4-6023	Leads w/QD, 12.5'	1
4.	T-0160	7-2827*	Pinion Assembly	1		T-1635	4-6024	Leads w/QD, 25'	1
5.	T-1078	9-5858*	Split Holder, Machine	1		T-1636	4-6025	Leads w/QD, 50'	1
6.	T-1079	9-5857*	Split Holder, 90°	1		T-1921	2-6052	Torch 70° w/ Leads, 12.5' & QD	1
	T-1080	9-5856*	Split Holder, 70°	1		T-1922	2-6053	Torch 70° w/ Leads, 25' & QD	1
7.	T-0122	8-0533	O-Ring	1		T-1923	2-6054	Torch 70° w/ Leads, 50' & QD	1
8.	T-1622	8-4301*	Torch Switch	1		T-1924	2-6055	Torch 90° w/ Leads, 12.5' & QD	1
9.	T-1623	8-4302*	Switch Insert	1		T-1925	2-6056	Torch 90° w/ Leads, 12.5' & QD	1
10.	T-1624	8-4303*	Switch Closure	1		T-1926	2-6057	Torch 90° w/ Leads, 50' & QD	1
11.	T-1625	8-4305*	Handle	1	NS	T-2161	9-4531	PIP Assy	1
12.	T-1626	T-1626	Handle with switch	1	NS	T-1081	9-6103	PIP Wire Assy	1
13.	T-1040	9-5636-1	Handle	1	NS	T-4148	9-4522*	Positioning Tube Assembly	1
14.	T-1628	T-1628	Handle with switch	1	NS	T-4057	2-6009*	Machine Torch w/ 35' Leads, Phenolic Tube & Parts Kit	1

"UR" IS A UNIQUE DESIGN WHICH ENHANCES PERFORMANCE AND DIFFERS FROM OEM DESIGNS

THERMAL DYNAMICS® is a Registered Trademark of THERMAL DYNAMICS CORP. * OEM Manufactured Parts

PCH-75, PCH-76

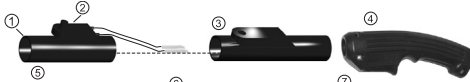
REPLACEMENT PARTS SUITABLE FOR THERMAL DYNAMICS®



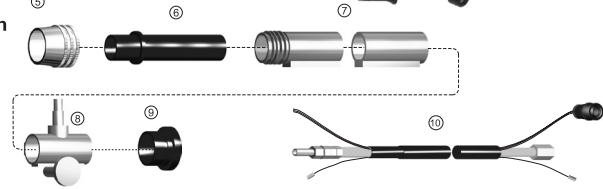
Item	Part No	Ref. No.	Description	Std. Pkg	Item	Part No.	Ref. No	Description	Std. Pkg.
1.	T-1609	8-7500	Shield Cap	1	3.	T-1611	8-7501	Gas Distributor	5
	T-1706	8-7507	Crown Shield Cup	1		T-1709	8-7508	Gouging Gas Distributor	5
	T-3761	8-7499	Crown Shield, Copper	1	4.	T-1612	8-7502	Electrode	1
	T-3487	8-7525*	Shield Cap	1	5.	T-1615	8-0532	O-Ring	10
2.	T-1610	8-7504	Tip, 55 Amp	5	6.	T-1613	8-7510	Torch Body 70°	1
	T-2535	9-7726	Tip, 60 Amp	5		T-1614	8-7511*	Torch Body 90°	1
	T-2534	9-7728	Tip, 80 Amp	5		T-2308	8-7512	Torch Body, Machine	1
	T-2126	8-7505	Tip, 70 Amp	5	NS	T-2183	9-7501*	Coil Spring	1
	T-1707	8-7503	Drag Tip, 35 Amp	5	NS	T-2875	KPT75	Parts Kit	1
	T-1708	8-7506	Gouging Tip	5					

ACCESSORIES

Hand Torch



Machine Torch

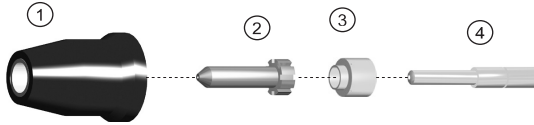


Item	Part No	Ref. No.	Description	Std. Pkg	Item	Part No.	Ref. No	Description	Std. Pkg.
1.	T-0874	9-5636*	Handle	1	T-0759	4-0010		Hand Leads, 100XL, Unshielded, 25'	1
2.	T-1710	9-7502	Switch	1		T-0755	4-0011	Hand Leads, 100XL, Unshielded, 50'	1
3.	T-0155	8-1322	Retaining Sheath	1	NS	T-1713	4-7502	Machine Leads, Unshielded, 25'	1
4.	T-1040	9-5636-1	Handle w/Switch	1	NS	T-1714	4-7503	Machine Leads, Unshielded, 50'	1
5.	T-0157	8-4018	Nut	1	NS	T-2896	2-0001	100XL Torch 70° w/25' Leads	1
6.	T-0875	9-5637*	Adapter	1	NS	T-2897	2-0002	100XL Torch 70° w/50' Leads	1
7.	T-0159	8-5005	Mounting Tube	1	NS	T-2898	2-0003	100XL Torch 90° w/25' Leads	1
8.	T-0160	7-2827*	Pinion Assembly	1	NS	T-2899	2-0004	100XL Torch 90° w/50' Leads	1
9.	T-0161	8-4204	Bushing	1	NS	T-2890	2-7501	75 Torch, 70° w/25' Leads	1
10.	T-3613	T-2952	Hand Leads, 12.5', Unshielded	1	NS	T-2891	2-7502	75 Torch, 70° w/50' Leads	1
	T-1711	4-7500	Hand Leads, Unshielded, 25'	1	NS	T-2919	4-7611	25' Leads	1
	T-1712	4-7501	Hand Leads, Unshielded, 50'	1	NS	T-2920	4-7612	50' Leads	1

VERIFY POWER SUPPLY WHEN ORDERING LEADS

REPLACEMENT PARTS SUITABLE FOR
THERMAL DYNAMICS®

PCH-42



Item	Part No	Ref. No.	Description	Std. Pkg	Item	Part No.	Ref. No	Description	Std. Pkg.
1.	T-0272	9-6003	Shield Cup	1		T-1331	9-6501	Drag Tip	10
	T-0273	9-6004	Shield Cup, Crown *9-6003 Req'd	1		T-2182	9-6502	Tip, Gouging	10
	T-1328	9-6503	Shield Cup, Long Life	1	3.	T-1332	9-6507	Gas Distributor	5
2.	T-4637	9-6504*	Drag Tip 20A	10	4.	T-4640	9-6542*	Electrode	5
	T-1330	9-6500	Standoff Tip	10					

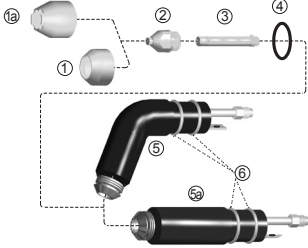
PCH-62

Item	Part No	Ref. No.	Description	Std. Pkg	Item	Part No.	Ref. No	Description	Std. Pkg.
1.	T-2876	9-8400*	Shield Cup	1		T-2938	9-8416	Gouging Tip, 40A	10
	T-2924	9-8415*	Torch Standoff Guide	1	3.	T-2877	9-8401	Gas Distributor, 40A	1
2.	T-2880	9-8411	Tip	10	4.	T-3721	9-8407*	Electrode	5
	T-3317	9-8412	Stand Off Tip, 40A	10		T-3720	9-8402*	Electrode	5

PCH-102

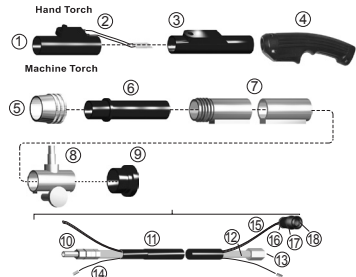
Item	Part No	Ref. No.	Description	Std. Pkg	Item	Part No.	Ref. No	Description	Std. Pkg.
1.	T-2912	8-7575*	Stand-off Guide	1		T-2126	8-7505	Tip 70 Amp	5
	T-1609	8-7500	Shield Cap	1		T-2534	9-7728	Tip 80 Amp	5
	T-2913	8-7496*	Shield Cap, Copper	1		T-1708	8-7506	Gouging Tip	5
	T-3487	8-7525*	Shield Cap	1	3.	T-1611	8-7501	Gas Distributor	5
	T-1706	8-7507	Castle Shield Cap	1		T-1709	8-7508	Gouging Gas Distributor	5
2.	T-1707	8-7503	Drag Tip, 35A	5	4.	T-3721	9-8407*	Electrode	5
	T-2535	9-7726	Tip 60 Amp	5		T-3720	9-8402*	Electrode	5

PCH/M-51 TORCH



ACCESSORIES

REPLACEMENT PARTS SUITABLE FOR THERMAL DYNAMICS®



Item	Part No	Ref. No.	Description	Std. Pkg	Item	Part No.	Ref. No	Description	Std. Pkg.
1.	T-0143	9-5630	Shield Cup	10	4.	T-0151	8-5525	O-Ring	10
	T-0144	8-2152	Shield Cup, SR	2	5.	T-0152	9-5635	TMT-51, Hand Torch	1
	T-0145	8-2151	Shield Cup, SR, Long	1		T-3790	9-4344*	Torch Head 90°	1
1a.	T-0146	8-5526	Crown Shield Cup	5	5a.	T-0156	9-5634	TMT-51, Machine Torch	1
	T-0147	8-5526-1	Crown Shield Cup, SR	1	6.	T-0122	8-0533	O-Ring	10
2.	T-0148	9-5631	Tip, .043	10	NS	T-0162	8-4053	Tip Wrench	1
	T-0148	9-5631UP	Tip, .043, Unplated	10	NS	T-0163	8-4025	Lubricant	1
	T-0149	9-5724	Tip, .078, Gouging	10	NS	T-0164	8-4220	Electrode Wrench	1
3.	T-0150	9-5633	Electrode	10	NS	T-3475	KPT51	Parts Kit PCH51	1
	T-2163	9-5633UP	Electrode, Unplated	10	T-2101	8-3146	O-Ring	10	

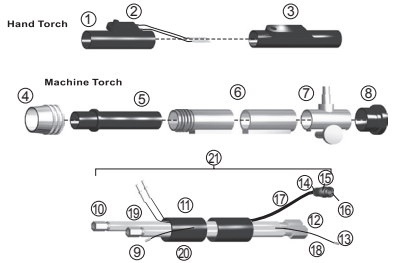
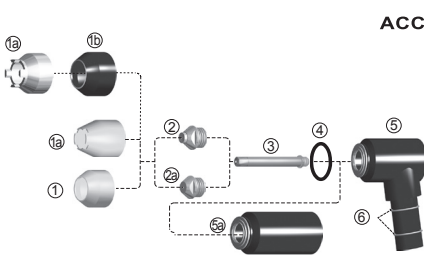
ACCESSORIES

Item	Part No	Ref. No.	Description	Std. Pkg	Item	Part No.	Ref. No	Description	Std. Pkg.
1.	T-0874	9-5636*	Handle	1	15.	T-0899	9-4276	Control Cable, 25'	1
2.	T-0181	9-5522	Switch	1		T-0900	9-4277	Control Cable, 50'	1
3.	T-0155	8-1322*	Retaining Sheath	1	16.	T-1067	9-3295*	Cable Clamp	1
4.	T-1040	9-5636-1	Handle w/Switch	1	17.	T-0864	9-3294	Plug	1
5.	T-0157	8-4018	Nut	1	18.	T-0865	9-3296	Pin	1
6.	T-0875	9-5637*	Adapter	1	19.	T-0856	4-2871	Hand Torch Leads, 12.5'	1
7.	T-0159	8-5005	Mounting Tube	1		T-0857	4-2874	Machine Torch Leads, 12.5'	1
8.	T-0160	7-2827*	Pinion Assy	1		T-0858	4-5030	Hand Torch Leads, 25'	1
9.	T-0161	8-4204	Bushing	1		T-0859	4-5031	Hand Torch Leads, 50'	1
10.	T-0821	8-3239	Fitting, Torch End	1		T-0860	4-5032	Machine Torch Leads, 25'	1
11.	T-0872	9-5515	Leads Sleeveing, 25'	1		T-0861	4-5033	Machine Torch Leads, 50'	1
	T-0873	9-5516	Leads Sleeveing, 50'	1	NS	T-0848	2-2860	Hand Torch w/25' Leads	1
	T-0862	8-6095	Shielded Sleeveing, 25'	1	NS	T-2893	2-2985	Hand Torch 70° w/ 25' leads	1
	T-0863	8-6096	Shielded Sleeveing, 50'	1	NS	T-0849	2-2861	Hand Torch w/50' Leads	1
12.	T-0866	9-4273	Negative Lead, 25'	1	NS	T-2894	2-2986	Hand Torch 70° w/ 50' leads	1
	T-0867	9-4274	Negative Lead, 50'	1	NS	T-0852	2-2864	Machine Torch w/25' Leads	1
13.	T-0822	8-3240	Fitting, Console End	1	NS	T-0853	2-2865	Machine Torch w/50' Leads	1
14.	T-0870	9-4279	Pilot Lead, 25'	1	NS	T-0854	2-2866	Hand Torch w/Parts	1
	T-0871	9-4280	Pilot Lead, 50'	1	NS	T-0855	2-2867	Machine Torch w/Parts	1

PCH-M-52 TORCH

**REPLACEMENT PARTS SUITABLE FOR
THERMAL DYNAMICS®**

ACCESSORIES

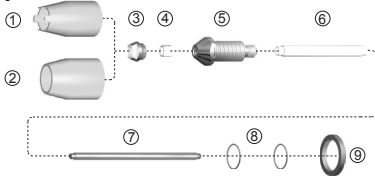


Item	Part No	Ref. No.	Description	Std. Pkg	Item	Part No.	Ref. No	Description	Std. Pkg.
1.	T-0166	9-5617	Shield Cup	10		T-0175	9-5709	Gouging Tip, 70 Amp	10
	T-0167	9-5712	Drag Shield Cup, SR	1	3.	T-0176	9-5619	Electrode, Air	10
1a.	T-0168	9-5694	Crown Shield Cup	10		T-1021	8-3331	Electrode, Air Plated	10
	T-0169	9-5694-1	Crown Shield Cup, SR	1		T-0177	9-5711	Electrode, Nitrogen	10
1b.	T-0186	9-5781	Shield Cup, Long, SR	1	4.	T-0151	8-5525	O-Ring	10
1c.	T-0188	9-5780	Shield Cup, Metal	1	5.	T-0178	9-5642	TMT-52, Hand Torch	1
2.	T-0170	9-5708	Tip, .059, 100 Amp	10	5a.	T-0179	9-5643	TMT-52, Machine Torch	1
	T-0187	9-5782	Tip, .052, 80 Amp	10	6.	T-0184	8-0021	O-Ring	10
	T-0171	9-5707	Tip, .047, 70 Amp	10	NS	T-0185	8-5130*	Heat Shield	1
	T-0172	9-5618	Tip, .043, 45 Amp	10	NS	T-0189	8-4007	Tip Wrench	1
	T-0173	9-5702	Tip, .031, 35 Amp	10	NS	T-0163	8-4025	Lubricant	1

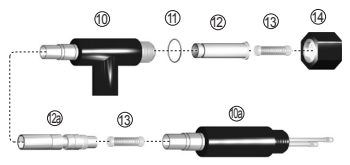
ACCESSORIES

Item	Part No	Ref. No.	Description	Std. Pkg	Item	Part No.	Ref. No	Description	Std. Pkg.
1.	T-0180	9-5644*	Handle	1	15.	T-0894	9-3294	Plug	1
2.	T-0181	9-5622	Switch	1	16.	T-0865	9-3296	Pin	1
3.	T-0182	8-4216*	Retaining Sheath	1	17.	T-0899	9-4276	Control Cable, 25'	1
4.	T-0157	8-4018	Nut	1		T-0900	9-4277	Control Cable, 50'	1
5.	T-0183	9-1901*	Adapter	1	18.	T-0870	9-4279	Pilot Lead, 25'	1
6.	T-0159	8-5005	Mounting Tube	1		T-0871	9-4280	Pilot Lead, 50'	1
7.	T-0160	7-2827*	Pinion Assembly	1	19.	T-0905	9-5664	Plasma Lead, 25'	1
8.	T-0161	8-4204	Bushing	1		T-0907	9-5665	Plasma Lead, 50'	1
9.	T-0914	8-4190	Fitting (-), Torch End	1	20.	T-0903	9-5662	Negative Lead, 25'	1
	T-0976	8-5085	Ferrule	1		T-0904	9-5663	Negative Lead, 50'	1
	T-0889	8-5013	Ferrule	1	21.	T-0876	4-5034	Hand Torch Leads, 25'	1
11.	T-0862	8-6095	Shielded Sleaving, 25'	1		T-0877	4-5035	Hand Torch Leads, 50'	1
	T-0863	8-6096	Shielded Sleaving, 50'	1		T-0878	4-5036	Machine Torch Leads, 25'	1
	T-0896	9-3035	Leads Sleaving, 50'	1		T-0879	4-5037	Machine Torch Leads, 50'	1
	T-0887	8-1498	Leads Sleaving, 25'	1		T-0881	4-5044	Shielded Leads, 50'	1
12.	T-0884	8-0339	Nut, Console End	1	NS	T-1374	2-2936	TMT-52 70' W/25' Leads	1
	T-0883	8-0338	Fitting, Console End	1	NS	T-1375	2-2937	TMT-52 70' W/50' Leads	1
13.	T-0924	8-7033	Fitting (-), Console End	1	NS	T-1376	2-2938	TMT-52 Mach W/25' Leads	1
	T-0892	8-5518	Nut, Console End	1	NS	T-1377	2-2939	TMT-52 Mach W/50' Leads	1
14.	T-1067	9-3295	Cable Clamp	1					

4B/4BT TORCH

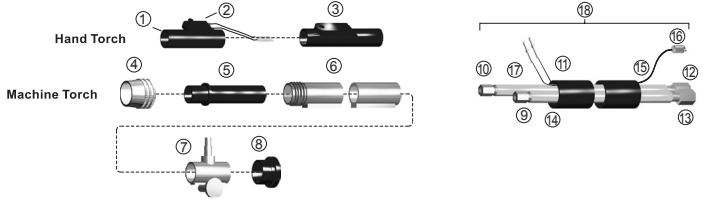


REPLACEMENT PARTS SUITABLE FOR THERMAL DYNAMICS®



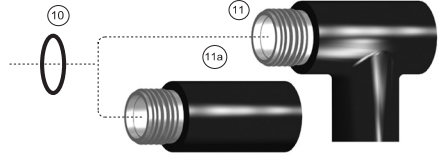
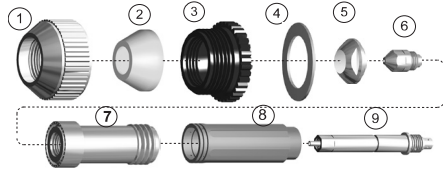
Item	Part No	Ref. No.	Description	Std. Pkg	Item	Part No.	Ref. No	Description	Std. Pkg.
1.	T-0212	8-4213	Crown Shield Cup	10	8.	T-0198	8-0554	O-Ring	10
2.	T-0211	8-4088	Shield Cup	10	9.	T-0197	8-4069	Gasket	5
3.	T-2110	8-4045	Shield Cap	10	10.	T-0195	8-4160*	PCH-4B Hand Torch, 70°	1
	T-0210	8-4173	Tip, .070, CCW	10	10a.	T-1026	8-4161*	Hand Torch, 90°	1
	T-0209	8-4170	Tip, .070	10		T-0196	8-4196	PCH-4BT Mach Torch	1
	T-0208	8-4171	Tip, .030, CCW	10	11.	T-0114	8-0530	O-Ring	10
	T-0207	8-4189*	Tip, .030	10	12.	T-0193	8-4156*	Collet	1
	T-0206	8-4212*	Tip, .046, CCW	10	12a.	T-2111	8-4049*	Collet, 4B, w/O-Ring	1
	T-0205	8-4211*	Tip, .046	10		T-0194	8-4197*	Collet, 4BT, w/O-Ring	1
	T-0204	8-4172*	Tip, .059, CCW	10	13.	T-0192	8-4050	Spring	1
	T-0203	8-4153	Tip, .059	10	14.	T-0191	8-4158	Back Cap	1
4.	T-0202	9-2421*	Gas Distributor	10	NS	T-0163	8-4025	Lubricant	1
5.	T-0201	8-4154	Liner, w/O-Ring	1	NS	T-0215	8-4157	Liner Wrench	1
6.	T-0200	8-4182	Sleeve	1	NS	T-0214	8-4198	Collet Wrench	1
7.	T-0199	8-4073	Electrode	5	NS	T-0213	8-4091	Tip Wrench	1

ACCESSORIES



Item	Part No	Ref. No.	Description	Std. Pkg	Item	Part No.	Ref. No	Description	Std. Pkg.
1.	T-0917	8-5007*	Handle	1	T-0922	8-5015	Nut	1	
2.	T-0916	8-4218	Switch Assy	1	13.	T-0924	8-7033	Fitting (-), Console End	1
3.	T-0915	8-4216*	Retaining Sheath	1	14.	T-0927	9-3265	Negative Lead, 25'	1
4.	T-0157	8-4018	Nut	1		T-0929	9-3267	Negative Lead, 50'	1
5.	T-0183	8-4184*	Adaptor	1	15.	T-0925	9-3107	Control Cable, 25'	1
6.	T-0159	8-5005	Mounting Tube	1		T-0926	9-3108	Control Cable, 50'	1
7.	T-0160	7-2827*	Pinion Assembly	1	16.	T-1069	9-3173*	Plug	1
8.	T-0161	8-4204	Bushing	1	17.	T-0928	9-3266	Positive Lead, 25'	1
9.	T-0914	8-4190	Fitting (-), Torch End	1		T-0930	9-3268	Positive Lead, 50'	1
	T-0923	8-5085	Ferrule (-)	5	18.	T-0908	4-2727	Hand Leads, 25'	1
10.	T-0918	8-5008	Fitting (+), Torch End	1		T-0909	4-2728	Machine Leads, 25'	1
	T-0921	8-5014	Ferrule (+)	5		T-0910	4-2729	Hand Leads, 50'	1
11.	T-0911	8-1001	Leads Sleeveing, 25'	1		T-1036	4-2730	Machine Leads, 50'	1
	T-0913	8-4033	Leads Sleeveing, 50'	1	NS	T-0912	8-1205	3" Shrink-On Tubing	1
12.	T-0919	8-5010	Fitting (+), Console End	1	NS	T-0920	8-5011*	Heat Shield	1

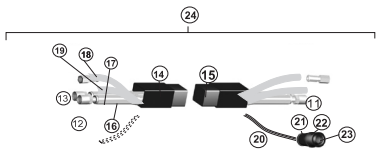
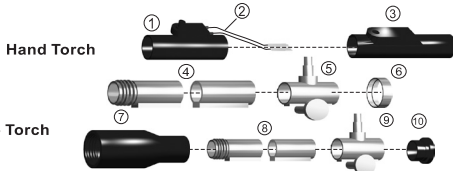
PCH/M-6B TORCH



REPLACEMENT PARTS SUITABLE FOR THERMAL DYNAMICS®

Item	Part No	Ref. No.	Description	Std. Pkg	Item	Part No.	Ref. No	Description	Std. Pkg.
1.	T-0233	8-6515	End Cap	1	8.	T-0221	8-6587	Gas Distributor, CCW	1
2.	T-0232	8-6514	End Piece	10		T-0220	8-6569	Gas Distributor	1
3.	T-0231	8-6581	Outer Insulator	1	9.	T-0219	8-6615	Electrode Holder	1
4.	T-0230	8-6512	Gasket	5	10.	T-0108	8-0531	O-Ring	1
5.	T-0229	8-6572	Tip, .125, 400 Amp	5	11.	T-0216	8-6584	6B Hand Torch 90°	1
	T-0228	8-6582	Tip, .113, 300 Amp	5		T-1423	8-6583	6B Hand Torch 70°	1
	T-0227	8-6575	Tip, .093, 200 Amp	5	11A.	T-0217	8-6577	6B Machine Torch	1
	T-0226	8-6648	Tip, .076, 150 Amp	5	NS	T-0163	8-4025	Lubricant	1
	T-0225	8-6580	Tip, .067, 100 Amp	5	NS	T-0236	8-6517	Liner/Tip Wrench	1
6.	T-0224	8-6586	Electrode, Lo-Amp	10	NS	T-0235	8-6573	Electrode Wrench	1
	T-0223	8-6578	Electrode	10	NS	T-0234	8-6574	Wrench, Electrode Holder	1
7.	T-0222	8-6571	Liner w/O-Ring	10	NS	T-2874	KPT6B	Spare Parts Kit	1

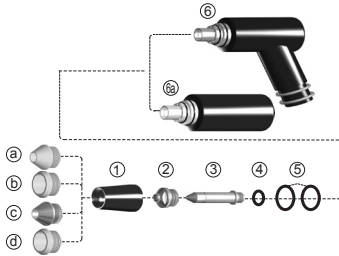
ACCESSORIES



Item	Part No	Ref. No.	Description	Std. Pkg	Item	Part No.	Ref. No	Description	Std. Pkg.
1.	T-0977	8-6519*	Handle	1	T-0987	9-2867		Plasma (Black) Hose, 50'	1
2.	T-0946	8-4219	Switch	1	20.	T-1071	8-0002	Control Cable, 25'	1
3.	T-0945	8-4217*	Switch Sheath	1		T-1072	8-0003	Control Cable, 50'	1
4.	T-0978	8-6521*	Mounting Tube, 2 1/4" Dia	1	21.	T-1067	9-3295	Cable Clamp	1
5.	T-0936	7-2828*	Pinion Assy, 2 1/4" Dia	1	22.	T-0864	9-3294	Plug	1
6.	T-0979	8-6522*	Bushing	1	23.	T-0865	9-3296	Pin	1
7.	T-0980	8-6566*	Adaptor, 1 3/8" Dia	1	24.	T-0932	4-2797	Hand Leads, 25'	1
8.	T-0159	8-5005	Mounting Tube, 1 3/8" Dia	1		T-0933	4-2799	Hand Leads, 50'	1
9.	T-0160	7-2827*	Pinion Assy, 1 3/8" Dia	1		T-0934	4-2725	Machine Leads, 25'	1
10.	T-0161	8-4204	Bushing	1		T-0933	4-2799	Machine Leads, 50'	1
11.	T-0924	8-7033	Fitting, Console End (+, -)	1	NS	T-0981	8-6614*	Heat Shield, Machine	5
12.	T-0983	8-7031	Fitting, Torch End (+)	1	NS	T-0981	8-6614*	Heat Shield, Machine	5
	T-0976	8-5085	Ferrule	5	NS	T-0982	8-7042*	Heat Shield, Hand	1
13.	T-0944	8-4190	Fitting, Torch End (-)	1	NS	T-2902	2-2744	Hand Torch 70° w/ 25' Leads	1
14.	T-0912	8-1205	Shrink-on, Tubing	1	NS	T-2903	2-2747	Hand Torch 70° w/ 50' Leads	1
15.	T-0940	8-1000	Leads Slewing, 25'	1	NS	T-2981	2-2789	Hand Torch 70° w/ 50' Leads	1
	T-0985	8-7051	Leads Slewing, 50'	1	NS	T-3404	2-2791	Hand Torch 90° w/ 50' Leads	1
16.	T-0990	9-2950	Negative (Green) Lead, 25'	1	NS	T-1907	2-2745	Hand Torch 90° w/ 25' Leads	1
	T-0991	9-2951	Negative (Green) Lead, 50'	1	NS	T-1905	2-2748	Hand Torch 90° w/ 50' Leads	1
17.	T-0988	9-2948	Positive (Blue) Lead, 25'	1	NS	T-1906	2-2749	Machine Torch w/ 50' Leads	1
	T-0989	9-2949	Positive (Blue) Lead, 50'	1	NS	T-1908	2-2792	Machine Torch w/ Leads 25'	1
18.	T-0941	8-1009	Secondary (Yellow) Lead, 25'	1	NS	T-1909	2-2793	Machine Torch w/ Leads 50'	1
	T-0942	8-1056	Secondary (Yellow) Lead, 50'	1	NS	T-4033	2-2741	Machine Torch w/ Parts & Mounting Tube	1
19.	T-0986	9-2866	Plasma (Black) Hose, 25'	1	NS	T-2121	8-6564*	Switch Sheath	1

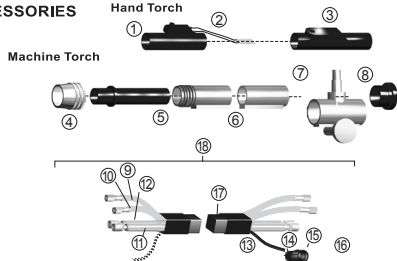
THERMAL DYNAMICS® is a Registered Trademark of THERMAL DYNAMICS CORP. * OEM Manufactured Parts

PCH/M-150 TORCH



REPLACEMENT PARTS SUITABLE FOR THERMAL DYNAMICS®

ACCESSORIES



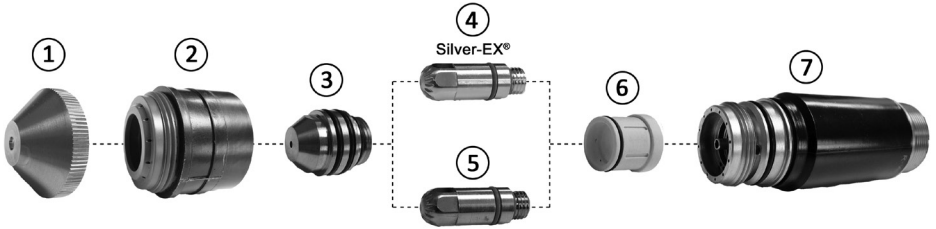
Item	Part No	Ref. No.	Description	Std. Pkg	Item	Part No.	Ref. No	Description	Std. Pkg.
1.	T-2172	9-5758-5	Plastic Bottom	1	T-0246	9-5753	Tip, .043 Oxy 50 Amp	5	
1a.	T-0237	9-5750	Shield Cup	1	T-0247	9-5767	Tip, .067 Nit 150 Amp	5	
	T-2950	9-5801*	Shield Cup	1	T-0248	9-5766	Tip, .052 Nit 100 Amp	5	
	T-1032	9-5750-1	Ceramic Taper Piece	1	T-4118	9-5756*	Tip, Gouging	5	
1b.	T-0238	9-5758	Shield Cup, Tip Exp.	1	T-0249	9-5765	Tip, .043 Nit 50 Amp	5	
	T-1024	9-5758-1	Ceramic Small Piece	1	3.	T-0253	9-5749	Electrode, Air	5
1c.	T-0239	9-5790	Shield Cup, Metal	1	T-0254	9-5754	Electrode, Nit, AR/H	5	
	T-2176	9-5790-1	Metal Front Piece	1	T-0255	9-5760	Electrode, Oxy	5	
1d.	T-0240	9-5774	Shield Cup, Gouging	1	4.	T-0263	8-0537	O-Ring, Small	10
	T-2173	9-5774-1	Ceramic Gouging Piece	1	5.	T-0264	8-0540	O-Ring, Large	10
2.	T-0241	9-5746	Tip, .070 Air 150 Amp	5	6.	T-2171	9-5743	TMT-150 Hand Torch, 70°	1
	T-0242	9-5747	Tip, .055 Air 100 Amp	5		T-0256	9-5744	TMT-150 Hand Torch, 90°	1
	T-0243	9-5748	Tip, .043 Air 50 Amp	5	6a.	T-0257	9-5745	TMT-150 Machine Torch	1
	T-0244	9-5751	Tip, .070 Oxy 150 Amp	5	NS	T-0265	8-7061	Tip Wrench	1
	T-0245	9-5752	Tip, .052 Oxy 100 Amp	5	NS	T-0266	8-5569	Electrode Wrench	1

ACCESSORIES

Item	Part No	Ref. No.	Description	Std. Pkg	Item	Part No.	Ref. No	Description	Std. Pkg.
1.	T-0973	9-1063*	Handle	1	15.	T-0864	9-3294	Plug	1
2.	T-0259	9-1246	Switch	1	16.	T-0865	9-3296	Pin	1
3.	T-0260	9-1064*	Retaining Sheath	1	17.	T-0940	8-1000	Leads Sleaving, 25'	1
4.	T-0261	8-2158*	Adapter, 1 3/8" Dia	1		T-0960	8-1058	Leads Sleaving, 50'	1
5.	T-1073	8-3322*	Adapter, 2 1/4" Dia	1		T-0963	8-5139	Shielded Sleaving, 25'	1
6.	T-1077	7-3207	Mounting Tube	1	18.	T-0954	4-2863	Hand Leads, 25'	1
7.	T-0160	7-2827*	Pinion Assembly	1		T-0955	4-2864	Hand Leads, 50'	1
8.	T-0161	8-4204	Bushing	1		T-0956	4-2865	Machine Leads, 25'	1
9.	T-0965	8-5565	Plasma Lead, 25'	1		T-0957	4-2866	Machine Leads, 50'	1
	T-0966	8-5566	Plasma Lead, 50'	1	NS	T-0948	2-2380	Hand Torch w/Parts	1
10.	T-0961	8-5135	Secondary Gas Hose, 25'	1	NS	T-0949	2-2382	Machine Torch w/Parts	1
	T-0962	8-5136	Secondary Gas Hose, 50'	1	NS	T-0950	2-2980	Machine Torch w/25' Leads	1
11.	T-0969	8-6139	Negative Lead, 25'	1	NS	T-0951	2-2981	Machine Torch w/50' Leads	1
	T-0970	8-6140	Negative Lead, 50'	1	NS	T-0952	2-2982	Hand Torch 70° w/25' Leads	1
12.	T-0971	8-6305	Coolant Return Hose, 25'	1	NS	T-0958	2-2978	Hand Torch 90° w/ 25' Leads	1
	T-0972	8-6306	Coolant Return Hose, 50'	1	NS	T-0953	2-2983	Hand Torch 70° w/50' Leads	1
13.	T-0967	8-5567	Control Cable, 25'	1	NS	T-0959	2-2979	Hand Torch 90° w/ 50' Leads	1
	T-0968	8-5568	Control Cable, 50'	1	NS	T-0165	7-3114*	Remote Control Assy	1
14.	T-1067	9-3295*	Cable Clamp	1					

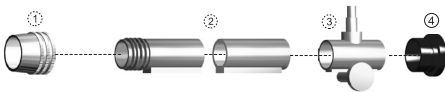
**MERLIN® 6000 & 6000GST
MAXIMIZER® 300**

**REPLACEMENT PARTS SUITABLE FOR
THERMAL DYNAMICS®**



Item	Part No	Ref. No.	Description	Std. Pkg	Item	Part No.	Ref. No.	Description	Std. Pkg.
1.	T-2289	20-1004	Shield Cup, 100-225A	1	T-10265	20-1010-UR		Electrode, Oxy, 100-225A	5
	T-2290	20-1005	Shield Cup, 300A	1	T-2293	20-1015		Electrode, Oxy, 50-100A	5
2.	T-2292	20-1002*	Shield Cup, Body	1	T-2294	20-1016		Electrode, Oxy, 150A	5
	T-3851	20-1030	Tip	5	T-2295	20-1017		Electrode, Oxy, 225A	5
3.	T-2303	20-1031	Tip, 100A	1	T-2300	20-1023		Electrode, N2, 50-300A	5
	T-2304	20-1032	Tip, 150A	5	T-0748	20-1025*		Electrode 100-300A ARH2	5
	T-2305	20-1033	Tip, 225A	5	6.	T-2301	20-0008	Gas Distributor, 50-225A	1
	T-2306	20-1034	Tip, 300A	5	T-2302	20-1009		Gas Distributor, 300A	1
4.	T-4913	20-1018-AG	Electrode, 50-225A, Silver-EX	1	7.	T-1693	9-6410	Torch Body	1
	T-4914	20-1021-AG	Electrode, 300A, Silver-EX	1	NS	T-4505	20-1028*	End Cap	1
5.	T-10264	20-1018-UR	Electrode, Air, 50-225A	5	NS	T-2971	20-1003	Shield Cap	1
	T-10264	20-1021-UR	Electrode, Air, 300A	5	NS	T-4539	20-1029*	Retaining Cap, Underwater	1

ACCESSORIES



Item	Part No	Ref. No.	Description	Std. Pkg.
1.	T-0261	8-2158*	Adapter	1
2.	T-1077	7-3207	Mounting Tube	1
3.	T-1060	7-2827*	Pinion Assembly	1

PCH/M-120 TORCH

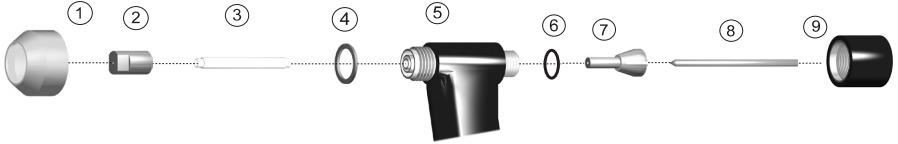
Item	Part No	Ref. No.	Description	Std. Pkg	Item	Part No.	Ref. No.	Description	Std. Pkg.
1.	T-3810	20-1226*	Crown Cup	1	3.	T-0569	20-1215	Gas Distributor	1
	T-4001	20-1227*	Shield Cup, Gouging	1	T-4002	20-1409*		Gas Distributor, Gouging	1
	T-0571	20-1225	Short Shield Cup	1	T-10263	20-1210-UR		Electrode	1
2.	T-0577	20-1222	Tip, .063, 120 Amp	5	T-4003	20-1404*		Electrode, Gouging	1
	T-0570	20-1221	Tip, .047, 70 Amp	5	NS	T-4116	20-1402*	Cooling Tube	1
	T-4004	20-1414*	Tip, Gouging	1	NS	T-4005	9-7831*	90° Torch Head	1
	T-0582	20-1220	Tip, .031, 35 Amp	5					

“UR” IS A UNIQUE DESIGN WHICH ENHANCES PERFORMANCE AND DIFFERS FROM OEM DESIGNS

THERMAL DYNAMICS®, MERLIN®, MAXIMIZER® are the Registered Trademarks of THERMAL DYNAMICS CORP. * OEM Manufactured Parts

PWH/M 2A WELDING TORCH

REPLACEMENT PARTS SUITABLE FOR THERMAL DYNAMICS®



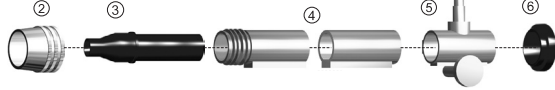
Item	Part No	Ref. No.	Description	Std. Pkg	Item	Part No.	Ref. No	Description	Std. Pkg.
1.	T-1482	8-2071	Shield Cup	5		T-1492	8-2027	Torch Head, 70°	1
2.	T-0776	8-3236*	Shield Cup, Ext.	10		T-1037	8-2028	Torch Head, 90°	1
	T-1483	8-2023	Tip, .046, 35A	10		T-1493	8-2097	Torch Head, Machine	1
	T-1484	8-2024	Tip, .062, 55A	10	6.	T-1494	8-2035	O-Ring	10
	T-1485	8-2025	Tip, .081, 75A	10	7.	T-1495	8-2039	Collet	1
	T-3937	8-2078*	Tip, Long, .022	10		T-0766	8-2041	Collet (.040)	1
	T-1486	8-2079	Tip, Long, .031	10	8.	T-1496	8-2033	Electrode	5
	T-1487	8-2080	Tip, Long, .046	10		T-0768	8-2044	Electrode (.040), Std.	10
	T-1488	8-2082	Tip, Long, .062	10		T-0767	8-2046*	Electrode, (.040), Ext.	10
	T-1489	8-2083	Tip, Long, .081	10		T-0769	8-2006*	Electrode, Ext. (.093)	10
3.	T-1490	8-2040	Gas Distributor	1	9.	T-1497	8-2032	Back Cap	1
4.	T-0770	8-2042	Gas Distributor (.040)	1		T-0765	8-2030	Back Cap, Extended	1
5.	T-1491	8-2036	Gasket	5					

ACCESSORIES

Hand Torch



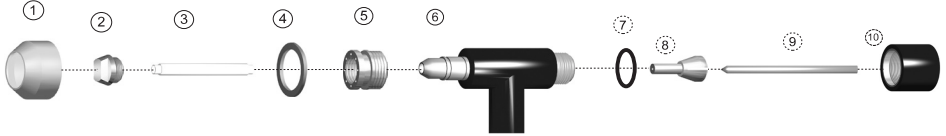
Machine Torch



Item	Part No	Ref. No.	Description	Std. Pkg	Item	Part No.	Ref. No	Description	Std. Pkg.
1.	T-1524	8-2026*	Handle	1	NS	T-8089	8-2021	Wrench/Gauge	1
2.	T-0157	8-4018*	Nut	1	NS	T-1531	2-2594	Machine Torch w/ Leads 25'	1
3.	T-1525	8-2063*	Sleeve	1	NS	T-0774	2-2840	Machine Torch w/12.5' Leads w/o QD	1
4.	T-0159	8-5005	Mounting Tube	1	NS	T-1532	9-2105	Negative Lead, Green, 12-1/2'	1
5.	T-0160	7-2827*	Pinion Assembly	1	NS	T-1533	8-1494	Negative Lead, Green, 25'	1
6.	T-0161	8-4204	Bushing	1	NS	T-1534	9-2107	Positive Lead, Red 12-1/2'	1
NS	T-1526	4-2539	Leads 12-1/2'	1	NS	T-1535	8-1495	Positive Lead, Red 25'	1
NS	T-1527	4-2585	Leads 25'	1	NS	T-1536	8-1074	Plasma Hose 12 1/2'	1
NS	T-1528	2-2443	Hand Torch 70° with 12-1/2' Leads	1	NS	T-1537	8-1496	Plasma Hose 25'	1
NS	T-4106	2-2100	Hand Torch 70° w/ 12.5' Leads & QD	1	NS	T-1520	8-1075	Shield Hose 12 1/2'	1
NS	T-1529	2-2505	Hand Torch 70° with 25' Leads	1	NS	T-1521	8-1497	Shield Hose 25'	1
NS	T-0772	2-2444	Hand Torch 90° w/ Leads 12.5'	1	NS	T-1446	8-3138	Sleeving 12 1/2'	1
NS	T-0775	2-2506	Hand Torch 90° w/ 25' Leads	1	NS	T-1447	8-3139	Sleeving 25'	1
NS	T-1530	2-2480	Machine Torch W/ 12-1/2' Leads	1					

REPLACEMENT PARTS SUITABLE FOR
THERMAL DYNAMICS®

PWH/M 3A WELDING TORCH



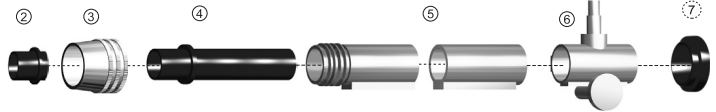
Item	Part No	Ref. No.	Description	Std. Pkg	Item	Part No.	Ref. No	Description	Std. Pkg.
1.	T-1505	8-3040	Shield Cup	1	T-1517	9-1811		Tip Long, .093, 130A	10
2.	T-0779	8-3035*	Shield Cup	10	3.	T-1518	9-2240	Gas Distributor	1
	T-1911	8-3038*	Shield Cup w/o Gas Lens	10	4.	T-1519	8-3057	Gasket	10
	T-1506	8-3052	Tip, .014, 10A	10	5.	T-1498	8-3059	Gas Diffuser	1
	T-1508	9-1782	Tip, .031, 30A	10	6.	T-1499	8-3030	Torch Head 70°	1
	T-1509	9-1783	Tip, .046, 50A	10		T-1036	8-3031	Torch Head 90°	1
	T-1510	9-1784	Tip, .062, 75A	10		T-1500	8-3032	Machine Torch Head	1
	T-1511	9-1785	Tip, .081, 100A	10	7.	T-1501	8-0527	O-Ring	10
	T-1512	9-1795	Tip, .093, 150A	10	8.	T-1502	9-1780	Collet	1
	T-1513	9-1788	Tip Long, .031, 10A	10	9.	T-1503	9-1747	Electrode	5
	T-1514	9-1789	Tip Long, .046, 20A	10		T-0778	8-2007	Electrode, Std. (.093)	5
	T-1515	9-1790	Tip Long, .062, 55A	10	10.	T-1504	9-1779	Back Cap	1
	T-1516	9-1791	Tip Long, .081, 75A	10		T-0777	9-1803	Electrode Cap, Extended	1

ACCESSORIES

Hand Torch



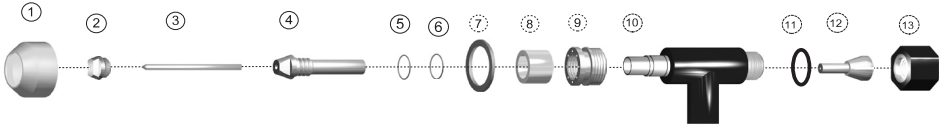
Machine Torch



Item	Part No	Ref. No.	Description	Std. Pkg	Item	Part No.	Ref. No	Description	Std. Pkg.
1.	T-1464	9-1757*	Handle	1	NS T-2868	2-2616		Hand Torch 180° w/ 12.5' Leads w/o QD	1
2.	T-1465	9-1778*	Sleeve	1	NS T-4170	2-2116		Hand Torch 180° w/ 25' Leads & QD	1
3.	T-0157	8-4018	Nut	1	NS T-1470	2-2531		Machine Torch W/12 1/2' Leads	1
4.	T-0183	9-1901*	Adapter	1	NS T-1471	2-2624		Machine Torch W/25' Leads	1
5.	T-0159	8-5005	Mounting Tube	1	NS T-3925	2-2117		Machine Torch w/ 25' Leads & QD	1
6.	T-0160	7-2827*	Pinion Assembly	1	NS T-1472	8-3028		Negative Lead 12-1/2'	1
7.	T-0161	8-4204	Bushing	1	NS T-1473	8-1499		Negative Lead 25'	1
NS T-1466	4-2615		Leads 12 1/2'	1	NS T-1474	8-3029		Positive Lead 12-1/2'	1
NS T-1467	4-2624		Leads 25'	1	NS T-1475	8-1500		Positive Lead 25'	1
NS T-1468	2-2527		Torch 70° W/12 1/2' Leads	1	NS T-1536	8-1074		Plasma Hose 12-1/2'	1
NS T-4885	2-2110		Torch 70° W/12 1/2' Leads & QD	1	NS T-1537	8-1496		Plasma Hose 25'	1
NS T-1469	2-2599		Torch 70° W/25' Leads	1	NS T-1520	8-1075		Shield Hose 12-1/2'	1
NS T-4181	2-2111		Hand Torch 90° w/ 12.5' Leads & QD	1	NS T-1521	8-1497		Shield Hose 25'	1
NS T-4013	2-2115		Hand Torch 90° w/ 25' Leads & QD	1	NS T-1446	8-3138		Sleeving 12-1/2'	1
NS T-2953	2-2623		Hand Torch 90° w/ 25' Leads w/o QD	1	NS T-1447	8-3139		Sleeving 25'	1
NS T-4031	2-2112		Hand Torch 180° w/ 12.5' Leads & QD	1	NS T-1810	9-1810		Wrench/ Gage	1

PWH/M 4A WELDING TORCH

REPLACEMENT PARTS SUITABLE FOR THERMAL DYNAMICS®

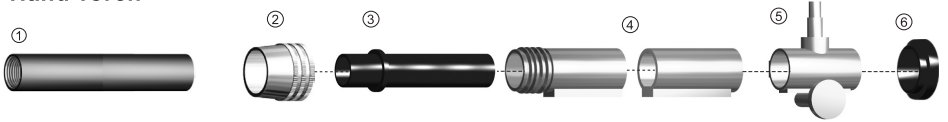


Item	Part No	Ref. No.	Description	Std. Pkg	Item	Part No.	Ref. No	Description	Std. Pkg.
1.	T-1449	8-4064	Shield Cup w/Lens	5	T-1303	8-4016		Offset Torch Head	1
2.	T-1450	9-1846	Tip, .046, 50 A	10	T-0075	8-4015		Torch Head 90°	1
	T-1451	9-1847	Tip, .062, 100 A	10	T-1461	8-4054		Machine Torch Head	1
	T-1452	9-1848	Tip, .093, 180 A	10	11.	T-1462	8-0530	O-Ring	10
	T-1453	9-1849	Tip, .125, 220 A	10	12.	T-1463	9-1876	Collet	1
3.	T-1454	9-1827	Electrode	5	13.	T-2861	9-5731	Collet 1/8	1
	T-2109	8-4029*	Electrode	10	NS	T-0191	8-4158	Back Cap	1
	T-2134	9-1834	Electrode, Extended	5	NS	T-2915	8-4002*	O-Ring Removal Tool	1
	T-2105	8-4011	Liner	1	NS	T-2916	8-4003*	O-Ring Installation Tool	1
4.	T-1455	8-4012-UR	Liner	1	NS	T-2144	9-1877	Electrode Cap, Ext.	1
5.	T-1456	8-0560	O-Ring	10	NS	T-1020	9-1890	Tip, .062, 100A, Ext.	10
6.	T-1457	8-0528	O-Ring	10	NS	T-2145	9-1891	Tip, .093, 125A, Long	10
7.	T-0197	8-4069	Gasket	5	NS	T-2355	9-1892	Tip, .125, 150A, Ext.	10
8.	T-1458	8-4024	Collar	1	NS	T-2146	9-2204	Gas Distributor	1
9.	T-1459	8-4040	Shield Cup Adaptor	1	NS	T-0780	9-5730	Gas Distributor	1
10.	T-1460	8-4014	Torch Head 70°	1					1

ACCESSORIES

Hand Torch

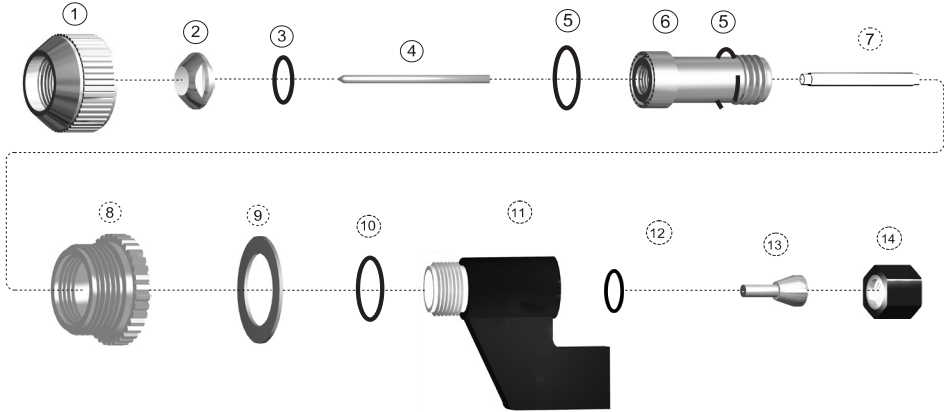
Machine Torch



Item	Part No	Ref. No.	Description	Std. Pkg	Item	Part No.	Ref. No	Description	Std. Pkg.
1.	T-0760*	9-5914	Handle	1	NS	T-1436	2-2482	Machine Torch w/ Leads 12.5'	1
2.	T-0157	8-4018	Nut	1	NS	T-4897	2-2122	Machine Torch w/ 12.5' Leads & QD	1
3.	T-0183*	9-1901	Adapter	1	NS	T-1437	2-2592	Machine Torch w/ 25' Leads	1
4.	T-0159	8-5005	Mounting Tube	1	NS	T-1438	9-2079	Negative Lead 12-1/2'	1
5.	T-0160*	7-2827	Pinion Assembly	1	NS	T-1439	8-1398	Negative Lead 25'	1
6.	T-0161	8-4204	Bushing	1	NS	T-1440	9-2081	Positive Lead 12-1/2'	1
NS	T-1432	4-2525	Leads 12-1/2'	1	NS	T-1441	8-1399	Positive Lead 25'	1
NS	T-1433	4-2544	Leads 25'	1	NS	T-1442	8-0142	Plasma Hose 12-1/2'	1
NS	T-1434	2-2821	Hand Torch 70° w/ 12-1/2' Leads	1	NS	T-1443	8-1505	Plasma Hose 25'	1
NS	T-4092	2-2120	Hand Torch 70° w/ 12.5' Leads & QD	1	NS	T-1444	9-3086	Shield Hose 12-1/2'	1
NS	T-1435	2-2820	Hand Torch 70° w/ 25' Leads	1	NS	T-1445	9-3088	Shield Hose 25'	1
NS	T-4562	2-2125	Hand Torch 70° w/ 12.5' Leads & QD	1	NS	T-1446	8-3138	Sleeving 12-1/2'	1
NS	T-4898	2-2121	Hand Torch 180° w/ 25' Leads & QD	1	NS	T-1447	8-3139	Sleeving 25'	1
NS	T-4899	2-2129	Hand Torch 180° w/ 25' Leads & QD	1	NS	T-0811	9-1873	Wrench / Gage	1
NS	T-1436	2-2803	Machine Torch w/ 12-1/2' Leads	1					

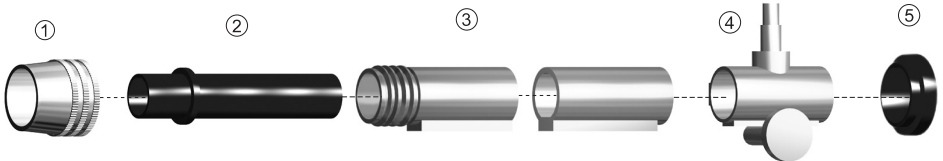
PMW 300 WELDING TORCH

REPLACEMENT PARTS SUITABLE FOR THERMAL DYNAMICS®



Item	Part No	Ref. No.	Description	Std. Pkg	Item	Part No.	Ref. No	Description	Std. Pkg.
1.	T-2360	8-4373	End Cap	1	7.	T-2365	8-6651	Insulating Sleeve	1
2.	T-2361	8-4370	Tip, .093, 200A	5	8.	T-2366	8-6652*	Shield Cup Diffuser	1
	T-2362	8-4371	Tip, .113, 250A	5	9.	T-0230	8-6512	Gasket	5
	T-2363	8-4372	Tip, .125, 300A	5	10.	T-0108	8-0531	O-Ring	10
3.	T-2152	9-2863	O-Ring	10	11.	T-2369	8-6649	Torch Body	1
4.	T-1454	9-1827	Electrode	5	12.	T-2082	8-0534	O-Ring	10
5.	T-1029	9-2956	O-Ring	10	13.	T-2367	8-6650	Collet	1
6.	T-2364	8-6509	Liner (includes 5 and 10)	1	14.	T-2368	8-6654*	Electrode Cap	1

ACCESSORIES MACHINE TORCH



Item	Part No	Ref. No.	Description	Std. Pkg	Item	Part No.	Ref. No	Description	Std. Pkg.
1.	T-0157	8-4018	Nut	1	NS T-1441	8-1399		Positive Torch Lead, 25 ft.	1
2.	T-0183	9-1901*	Adapter	1	NS T-1442	8-0142		Plasma Gas Hose, 12.5 ft.	1
3.	T-0159	8-5005	Mounting Tube	1	NS T-1443	8-1505		Plasma Gas Hose, 25 ft.	1
4.	T-0160	7-2827*	Pinion Assembly	1	NS T-1444	9-3086		Shield Gas Hose, 12.5 ft.	1
5.	T-0161	8-4204	Bushing	1	NS T-1445	9-3088		Shield Gas Hose, 25 ft.	1
NS T-1492	4-2525		Torch Leads, 12.5 ft.	1	NS T-0236	8-6517		Wrench	1
NS T-1493	4-2544		Torch Leads, 25 ft.	1	NS T-0813	8-6653*		Electrode Gage	1
NS T-1438	9-2079		Negative Torch Lead, 12.5 ft.	1	NS T-2866	2-2845		PMW300 w/ 12.5' Leads	1
NS T-1439	8-1398		Negative Torch Lead, 25 ft.	1	NS T-2867	2-2846		PMW300 w/ 25' Leads	1
NS T-1440	9-2081		Positive Torch Lead, 12.5 ft.	1					