

THE GUIDE TO DIAMOND ACQUISITION AND INVESTMENT

Report Date: 10 October 2012

Report No. 120917A1

Client: Mr. Bradley Gordon

Diamond Profile:

RB-1.75-2.00 CARATS G VS1-VS2

Contact Info

The Diamond Analyst

Address:

444 East 72nd Street
New York, NY 10028

Telephone:

561-452-1000

Fax:

646-478-9704

Email:

john@thediamondanalyst.com

Website:

www.thediamondanalyst.com

Dear Mr. Bradley Gordon,

Congratulations! You have selected the new standard for straightforward, insightful advice on diamond acquisition and investment. The Diamond Analyst and the Diamond Profile Report enclosed is a wealth of diamond expertise and industry experience customized for you to attain the best quality and value for this major investment of time and money.

Our commitment is to make your proposal a success.

Section I of the Diamond Profile Report delivers a customized diamond analysis and the knowledge you need to get the very best in quality and value in the pursuit of the perfect diamond for acquisition.

Section II is the Diamond Price Profile and has been carefully researched to provide you with the clearest picture of diamond prices ranges in this specific quality and carat weight across the globe.

After you have reviewed this valuable report on diamonds and diamond pricing and would like the opportunity for insider access to view and select the best quality and value for your dollars then please feel free to contact The Diamond Analyst for an appointment. Our years of diamond expertise include extensive capabilities in jewelry and ring design for a fully customized high-end experience at an exceptional value. For distinctive diamonds and designs from The Diamond Analyst call 561.452.1000 for an appointment or email John@TheDiamondAnalyst.com.

We hope that his valuable Diamond Profile Report guides you to buy with greater confidence knowing that your stone is both a gorgeous gem and a brilliant investment. After all, in love--and in investing--you should never settle for less than the best.

Sincerely,

John

The Diamond Analyst

Diamond Profile Report

DIAMOND SHAPE

Your selection of a Round Brilliant (RB) shape diamond produces the most light performance and brilliance factor as compared to other diamond shapes.

- Price: RB's are the highest priced shapes and make up 80% of all diamonds sold in all sizes.
- Quality: Table facet size plays a major role in creating the perception of diamond size and must match when pairing two RB's for stud earrings.
- Design: RB's look great when complemented by two accent diamonds like tapered baguettes or pear shapes but make sure they are not more two-thirds the diameter of the RB.

CUT

Quality of Manufacturing (QM) is determined by the manufacturer's ability to execute each facet group to the same angle in order to form identical shapes and a perfect Cut.

- Cut grade: A Very Good Cut grade provides you a discount on the price off an excellent grade without sacrificing the QM significantly.
- Key Factor: View the RB through the Table facet to confirm that the pavilion facets do not appear dark or less reflective and a sign that manufacturing is less than the ideal proportions.

CARATS WEIGHT

RB's of 1.75–2.00 carats will appear very similar in size and dimensions (7.8–8.2mm diameters). However, cost between 1.75 carats and 2.00 carats can vary by 25%. Diamond prices are not a linear curve. Carats weight is the major driver of diamond price and it's important to keep in mind the weight ceilings that make a significant impact on price.

- Key factor: Size matters but costs \$\$ so for this profile look at 1.70 to 1.85 carats weights to optimize the carat weight vs. cost relationship.

LAB REPORT

The two most well known is the Gemological Institute of America (GIA) and the smaller American Gem Society (AGS). The lab that grades your diamond affects what you pay for the diamond because the range applied to grading standards differs from lab to lab.

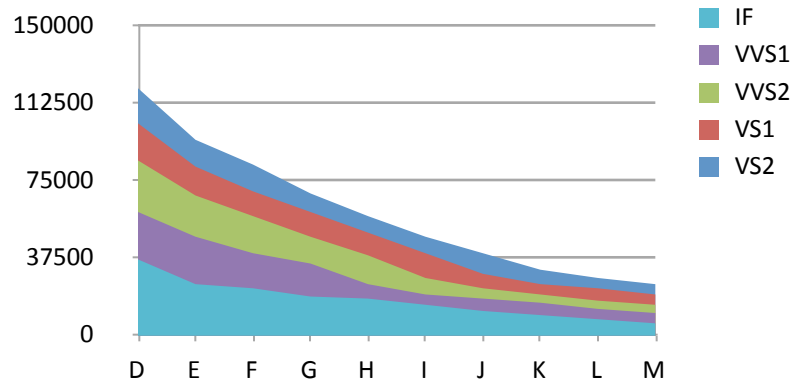
- Key factor: The DA recommends GIA graded diamonds or AGS graded diamonds.

COLOR GRADE

The Color grade you have selected is G. On the GIA Color grade scale a G Color is rated as near colorless. G Color graded diamonds are an excellent cost for quality option. Keep in mind that even within the G Color range there are differences and you should know how close to the lower quarter of the Color range you are purchasing.

- Key factor: When faced between selecting a slightly larger carat weight or a better Color grade, choose better Color, unless the carats weight is at a key carat weight ceiling.

The following chart highlights Color & Clarity vs. Cost for this diamond profile.



FLUORESCENCE

The grade that is acceptable to you is Faint. In this case the diamond might show a faint glow of blue or yellow when placed under ultra violet light found in a Lab or at a discothèque. Cool or not depending on your personal style but definitely pay less for any diamond with Fluorescence.

→ Key factor: In retail environments there is often a convenient lack of discussion about a diamond's Fluorescence grade but find it out because it impacts the cost.

CLARITY GRADE

The Clarity grade range you have selected VS1–VS2 is defined as Slightly Included on the GIA scale for Clarity. Confirm that the diamond's inclusion is not visible by the naked eye. There is a 10–15% impact on price between the VS1–VS2 Clarity grades even though there are only minor differences in quality.

→ Key factor: Select a VS2 and leave more money in your budget for a step up in Color grade.

→ Key factor: Inclusions that are not visible through the Table facet tend to cost more.

SYMMETRY GRADE

A Symmetry grade of Excellent to Very Good tells you that the diamond's facets are properly placed and well-manufactured. A Good Symmetry grade for a RB's signifies less than ideal manufacturing quality and should be discounted.

→ Key factor: Remember that a Symmetry grade above Good makes a minimal impact on price.

POLISH

Polish is the quality standard for how the finish of each facet's face appears under 10X magnification and requires a great deal of skill to identify the microscopic lines from the cutting wheel on each diamond facet.

→ Key factor: Unless the Polish grade for a RB is below Very Good, the Polish grade makes little discernable impact on appearance and cost.

DESIGN

Designs are a matter of personal preference but every design should be executed to excellence. There are thousands of styles to choose from to set a Round Brilliant diamond into a ring design but be sure to allow the brilliance of the diamond to be showcased by keeping the metal prongs and setting to a minimum without compromising the safety of the diamond.

Carats	Color	Clarity	Lab	Polish Grade	Symmetry Grade	Dimensions	Depth Percent	Table Percent	Flourescence	Total \$/Diamond
3.00ct	F	VS1	GIA	EX	EX	9.48x6.99x4.67	66.8	65	Faint	44805
3.00ct	F	VS1	GIA	EX	VG	9.25x7.06x4.84	68.6	61	None	46815
3.00ct	E	VS1	GIA	VG	VG	8.02x8.05x5.19	64.7	70	None	50520
3.00ct	D	VS1	GIA	GD	GD	9.07x7.95x4.98	62.6	72	None	64500
3.00ct	D	VVS2	GIA	EX	GD	9.37x6.98x4.82	69.1	63	None	68340
3.01	F	VS1	GIA	VG	VG	7.79x8.24x5.31	68.2	59	None	46317.88
3.01	F	VS1	GIA	GD	GD	10.22x6.71x4.60	68.6	75	None	50236.9
3.01	F	VS1	GIA	VG	GD	8.46x7.66x5.42	70.8	68	None	50236.9
3.01	F	VS1	GIA	EX	GD	8.93x7.04x4.88	69.3	65	None	50236.9
3.01	E	VS1	GIA	VG	VG	9.81x7.12x4.68	65.7	70	None	50688.4
3.01	E	VS1	GIA	GD	GD	6.85x9.49x4.91	71.7	67	None	54240.2
3.01	F	VS1	GIA	VG	GD	8.90x7.06x4.84	68.6	66	None	55462.26
3.01	F	VS1	EGL	VG	VG	9.74x7.02x4.84	68.9	65	None	55685
3.01	F	VS1	GIA	EX	GD	9.36x7.06x4.85	68.7	63	None	56768.6
3.01	E	VVS2	GIA	EX	VG	4.17x9.03x7.06	70.4	59	None	56955.22
3.01	D	VS1	AGS	VG	GD	9.74x7.29x4.70	64.5	70	None	57190
3.01	F	VS1	GIA	EX	VG	9.51x6.88x4.79	69.6	63	None	61825.4
3.01	E	VS1	GIA	VG	VG	9.12x7.48x4.89	65.4	67	None	62054.16
3.01	F	VS1	GIA	EX	GD	10.07x7.33x4.57	62.3	68	Medium	62457.5
3.01	F	VVS1	GIA	VG	VG	9.94x6.57x4.58	69.7	60	Faint	70253.4
3.01	D	VVS1	GIA	EX	EX	9.24x7.00x4.79	68.4	64	None	71066.1
3.01	D	VVS2	GIA	GD	GD	9.20x7.25x4.63	63.9	68	None	79548.28
3.01	D	IF	GIA	VG	GD	10.55x7.41x4.50	60.7	77	None	117618.76
3.02	F	VS1	GIA	EX	EX	9.30x7.28x4.86	66.8	67	Strong	40573.7
3.02	F	VVS2	GIA	EX	GD	8.82x7.22x5.11	70.8	63	None	47115.02
3.02	F	VS1	GIA	VG	EX	7.84x7.87x5.46	69.6	60	None	50403.8
3.02	E	VS1	GIA	EX	VG	7.42x8.80x5.12	69	67	Faint	50856.8
3.02	F	VS1	GIA	EX	VG	9.86x6.84x4.73	69.2	64	None	52397
3.02	F	VVS1	GIA	VG	GD	10.21x6.76x4.82	71.3	74	None	53007.04
3.02	F	VS1	GIA	VG	GD	10.25x7.20x4.49	62.4	66	None	56957.2
3.02	F	VVS1	GIA	EX	VG	9.91x7.14x4.65	65.1	67	None	57017.6
3.02	F	VVS2	GIA	VG	VG	9.78x6.90x4.84	70.1	67	Blue, Medium	57168.6
3.02	F	VS1	GIA	GD	GD	9.77x7.48x4.59	61.4	69	None	58267.88
3.02	E	VS1	GIA	VG	VG	10.57x7.04x4.46	63.4	70	Faint	61547.6
3.02	E	VVS2	GIA	VG	GD	9.38x7.34x4.89	66.6	68	None	62212
3.02	D	VS1	GIA	EX	EX	7.88x7.85x5.45	69.4	68	Faint	68705
3.02	E	VVS2	GIA	VG	VG	9.50x7.60x4.88	64.2	66	None	74116.84
3.03	F	VS1	GIA	EX	GD	8.66x7.20x5.07	70.4	66	Faint	52861.38
3.03	F	VS1	GIA	EX	GD	9.04x7.62x5.46	71.7	70	Faint	53858.25
3.03	F	VS1	GIA	VG	VG	10.23x6.66x4.66	70	57	None	57145.8
3.03	D	IF	GIA	VG	VG	10.34x7.40x4.02	54.32	67		153318
3.04	D	VS1	GIA	EX	EX	9.29x7.17x4.85	67.6	67	None	69160
3.05	F	VS1	GIA	GD	GD	8.60x7.49x5.28	68.4	62	None	53210.3
3.05	F	VS1	GIA	EX	VG	7.95x7.91x5.40	68.3	63	None	55537.45
3.05	F	VS1	GIA	VG	GD	10.05x7.13x4.69	65.8	62	Faint	57523

3.05	F	VS1	GIA	VG	VG	7.43x8.80x5.12	68.9	61	None	59508.55
3.05	F	VS1	GIA	VG	VG	8.24x9.18x4.92	59.7	67	None	62155.95
3.06	E	VVS2	GIA	EX	VG	7.14x9.65x4.84	67.8	69	None	63060.48
3.06	D	VVS2	GIA	GD	VG	7.04x10.55x4.50	63.9	66	None	86451.12
3.08	D	VVS2	GIA	EX	VG	10.67x6.41x4.64	72.4	68	None	82334.56
3.09	F	VS1	GIA	VG	VG	9.69x6.83x4.74	69.4	63	None	54254.22
3.09	D	VVS2	GIA	VG	EX	10.56x7.73x4.30	55.6	64	None	89177.4
3.10ct	E	IF	GIA	VG	GD	9.86x7.19x4.78	66.5	70	None	71749.5
3.12	E	VS1	GIA	EX	GD	9.58x7.06x5.07	71.8	71	None	74630.4
3.15	D	VS1	GIA	VG	VG	7.37x9.43x4.91	66.6	61	Medium	53550
3.15	E	VVS2	GIA	EX	GD	10.18x7.08x4.70	66.4	63	None	65447.55
3.15	D	VVS1	GIA	EX	EX	10.04x6.96x4.72	67.8	62	None	77033.25
3.16	F	VVS1	GIA	VG	VG	10.26x7.04x4.78	67.9	62	None	63920.48
3.2	F	VVS2	GIA	VG	VG	8.80x7.82x5.29	67.6	66	None	68544
3.21	F	VS1	GIA	VG	GD	8.43x8.07x5.49	68	64	Faint	61933.74
3.21	D	VVS2	GIA	EX	VG	9.73x7.07x4.80	67.9	64	None	69143.4
3.21	E	VS1	GIA	EX	VG	9.76x7.22x4.92	68.1	54	None	69207.6
3.21	D	VVS2	GIA	GD	GD	10.75x6.71x4.63	69	69	None	72147.96
3.27	E	VS1	GIA	VG	VG	9.58x7.67x4.98	64.9	73	Faint	82077
3.28	F	IF	GIA	EX	VG	8.17x9.69x4.94	60.5	69	None	61992
3.28	F	VVS1	GIA	EX	VG	8.17x9.69x4.94	60.5	69	None	63123.6
3.3	F	VS1	GIA	EX	EX	9.28x7.19x5.07	70.5	64	None	50325
3.3	D	VS1	GIA	EX	VG	11.07x6.81x4.72	69.3	70	None	75075
3.33	F	VVS2	GIA	EX	EX	9.45x7.59x5.19	68.4	64	None	75474.45
3.33	D	VS1	GIA	VG	VG	9.98x7.26x4.86	66.9	71	None	78255
3.33	D	VS1	GIA	EX	VG	9.96x7.29x4.99	68.4	71	None	88245
3.33	F	IF	GIA	EX	VG	9.79x7.60x5.01	65.9	68	None	100649.25
3.34	E	VVS2	GIA	VG	VG	10.25x7.36x4.59	62.4	60	None	87601.52
3.37	F	VVS1	GIA	VG	GD	10.73x7.03x4.66	66.9	64	Faint	103802.74
3.4	D	VS1	GIA	VG	VG	9.46x7.11x5.27		60	None	68850
3.4	E	VS1	GIA	VG	GD	10.54x7.17x4.84	67.5	72	None	72501.6
3.42	F	VS1	GIA	VG	VG	10.06x7.97x4.87	61.1	60	None	77805
3.42	E	VVS1	GIA	GD	GD	10.34x7.93x4.63	58.4	57	None	88851.6
3.47	F	VS1	GIA	VG	GD	7.64x9.86x5.27	69	69	Faint	66950.18
3.48	F	VVS2	GIA	EX	VG	9.35x7.94x5.41	68.1	62	Blue, Medium	67251
3.51	F	VVS2	GIA	VG	GD	11.33x7.53x4.47	59.4	68	None	70814.25
3.53	F	VVS1	GIA	GD	VG	10.42x7.52x4.94	65.7	64	None	96845.55
3.61	E	VVS2	GIA	VG	EX	10.26x8.09x5.10	63	68	None	101783.95
3.63	E	VVS2	GIA	EX	VG	10.39x7.27x4.93	67.8	62	None	98206.02
3.67	F	IF	GIA	GD	GD	10.45x7.51x5.15	68.6	70		87456.1
3.7	F	VVS2	GIA	VG	VG	8.45x8.31x5.73	69	69	None	83860.5
3.72	D	IF	GIA	EX	VG	10.53x7.59x4.80	63.2	67	None	188232
3.76	F	VS1	GIA	EX	EX	10.22x8.00x5.21	65.3	65	None	76625.04
3.9	E	VVS2	GIA	VG	VG	9.76x7.94x5.38	67.8	63	Faint	105576.9

Note: This Diamond Profile Report is intended to help you navigate the quality and cost parameters to find the sweet spot of value in your diamond acquisition with the perfect balance of diamonds' qualities for your budget. We hope that you have found this report valuable. If you have any further questions regarding diamonds or ring design, we welcome your email to john@thediamondanalyst.com or feel free to call at 561 452 1000. We recognize that you are about to invest a substantial sum of money and we want you to feel good and to understand how best to get the most value for your dollar. Please feel free to browse our jewelry design website www.alitheadesign.com for great ideas for distinctive diamonds and designs. Thank you.

Sample