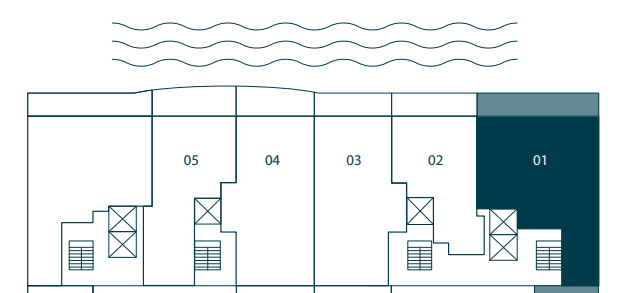


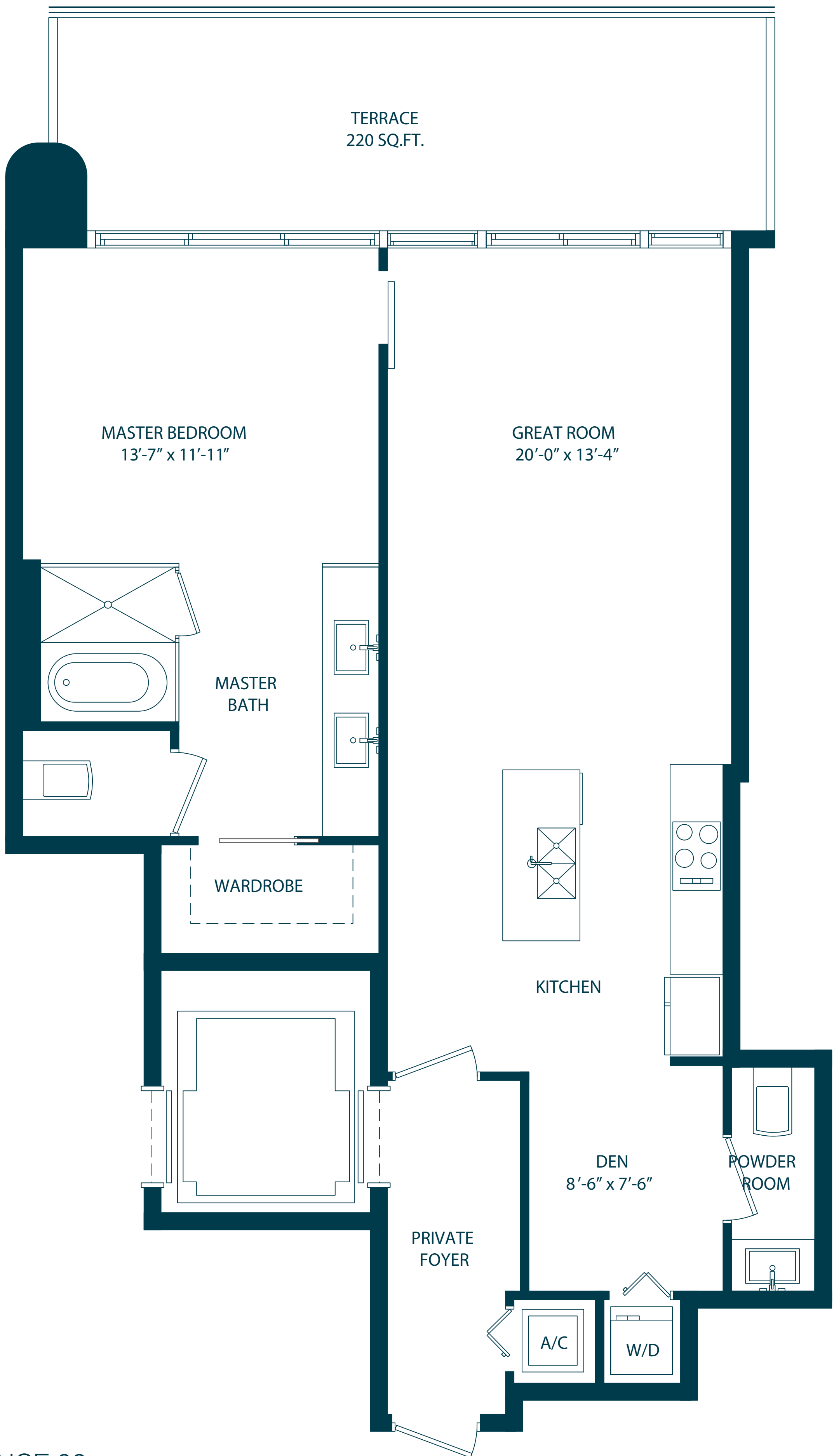


**RESIDENCE 01**  
**3 BEDROOMS / 3 1/2 BATHS**  
 LEVELS 12<sup>th</sup> TO 49<sup>th</sup>

A/C INTERIOR AREA	1,865 SQ.FT.	173.26 SQ.M.
TERRACE AREA	454 SQ.FT.	42.18 SQ.M.
TOTAL RESIDENCE	2,319 SQ.FT.	142.60 SQ.M.

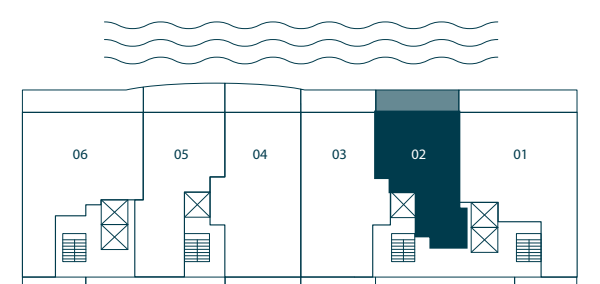


Stated dimensions are measured to the exterior boundaries of the exterior walls and the centerline of interior demising walls and in fact vary from the dimensions that would be determined by using the description and definition of the "Unit" set forth in the Declaration (which generally only includes the interior airspace between the perimeter walls and excludes interior structural components). For your reference, the area of the Unit, determined in accordance with those defined unit boundaries, is + or - 1,541 sq. ft. for unit 01. Note that measurements of rooms set forth on this floor plan are generally taken at the greatest points of each given room (as if the room were a perfect rectangle), without regard for any cutouts. Accordingly, the area of the actual room will typically be smaller than the product obtained by multiplying the stated length times width. All dimensions are approximate and may vary with actual construction, and all floor plans and development plans are subject to change.

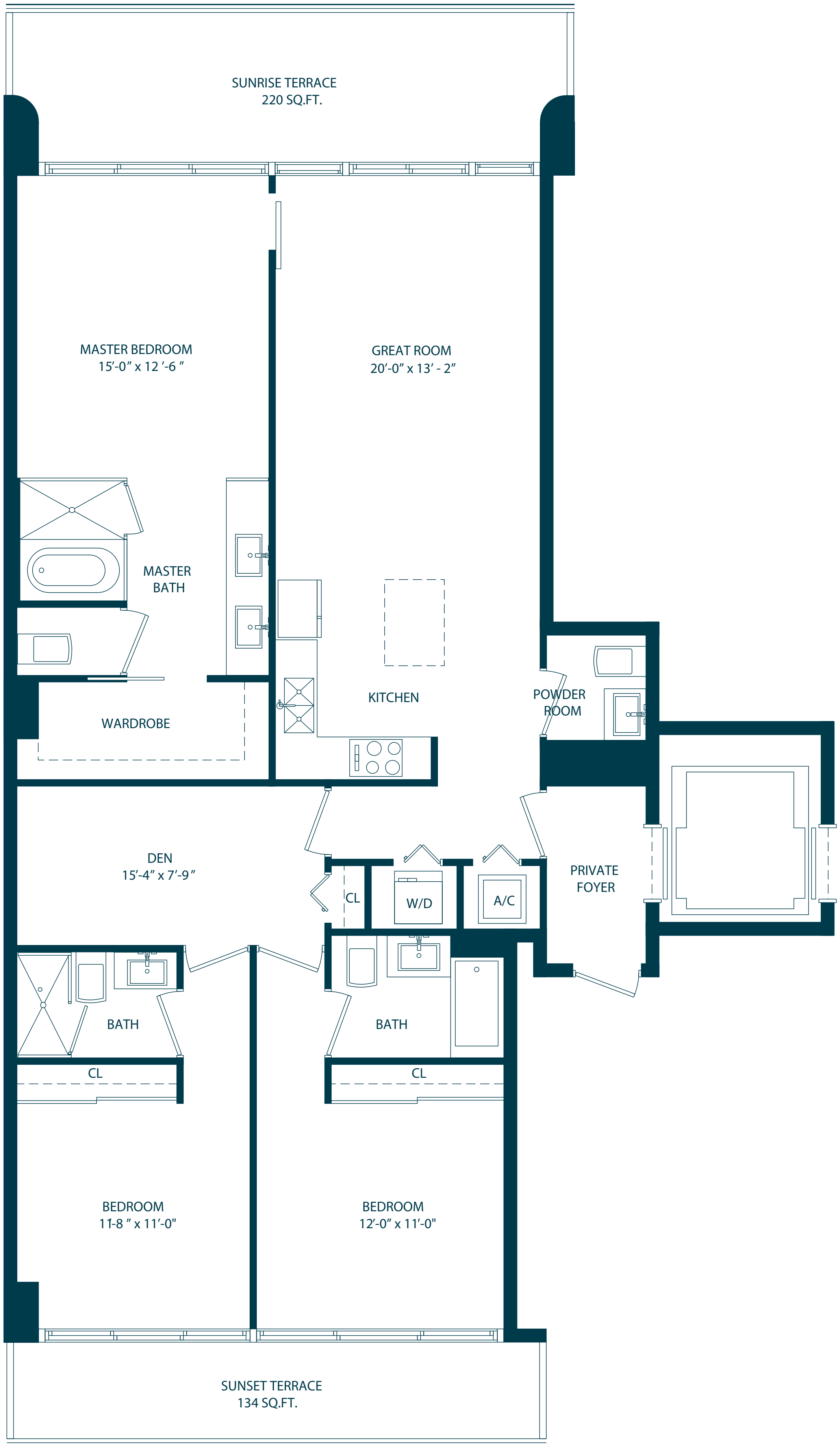


**RESIDENCE 02**  
**1 BEDROOM + DEN / 1 1/2 BATHS**  
 LEVELS 12<sup>th</sup> TO 49<sup>th</sup>

A/C INTERIOR AREA	1,124 SQ.FT.	104.42 SQ.M.
TERRACE AREA	220 SQ.FT.	20.43 SQ.M.
TOTAL RESIDENCE	1,344 SQ.FT.	124.85 SQ.M.



Stated dimensions are measured to the exterior boundaries of the exterior walls and the centerline of interior demising walls and in fact vary from the dimensions that would be determined by using the description and definition of the "Unit" set forth in the Declaration (which generally only includes the interior airspace between the perimeter walls and excludes interior structural components). For your reference, the area of the Unit, determined in accordance with those defined unit boundaries, is + or - 901 sq. ft. for unit 02. Note that measurements of rooms set forth on this floor plan are generally taken at the greatest points of each given room (as if the room were a perfect rectangle), without regard for any cutouts. Accordingly, the area of the actual room will typically be smaller than the product obtained by multiplying the stated length times width. All dimensions are approximate and may vary with actual construction, and all floor plans and development plans are subject to change.

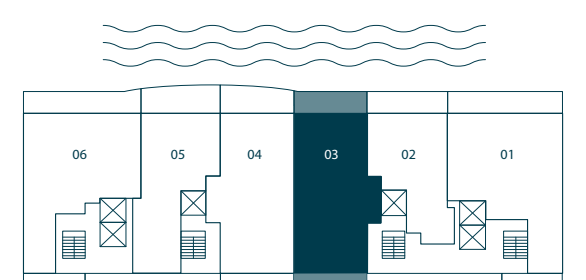


## RESIDENCE 03

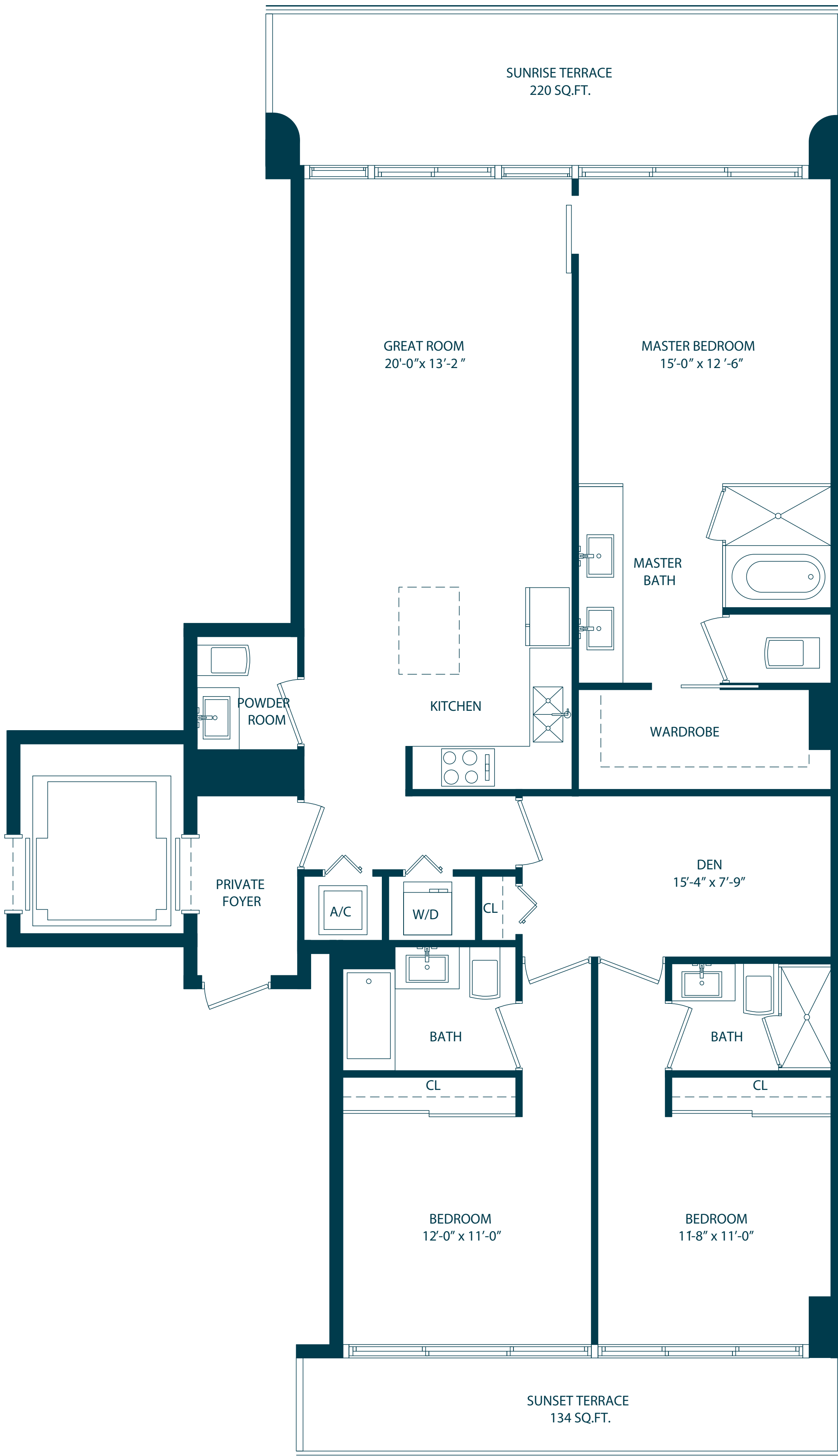
### 3 BEDROOMS + DEN / 3 1/2 BATHS

LEVELS 12<sup>th</sup> TO 49<sup>th</sup>

A/C INTERIOR AREA	1,681 SQ.FT.	156.17 SQ.M.
TERRACE AREA	354 SQ.FT.	32.88 SQ.M.
TOTAL RESIDENCE	2,035 SQ.FT.	189.06 SQ.M.

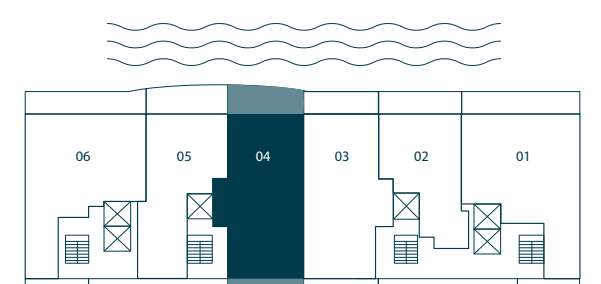


Stated dimensions are measured to the exterior boundaries of the exterior walls and the centerline of interior demising walls and in fact vary from the dimensions that would be determined by using the description and definition of the "Unit" set forth in the Declaration (which generally only includes the interior airspace between the perimeter walls and excludes interior structural components). For your reference, the area of the Unit, determined in accordance with those defined unit boundaries, is + or - 1,441 sq. ft. for unit 03. Note that measurements of rooms set forth on this floor plan are generally taken at the greatest points of each given room (as if the room were a perfect rectangle), without regard for any cutouts. Accordingly, the area of the actual room will typically be smaller than the product obtained by multiplying the stated length times width. All dimensions are approximate and may vary with actual construction, and all floor plans and development plans are subject to change.

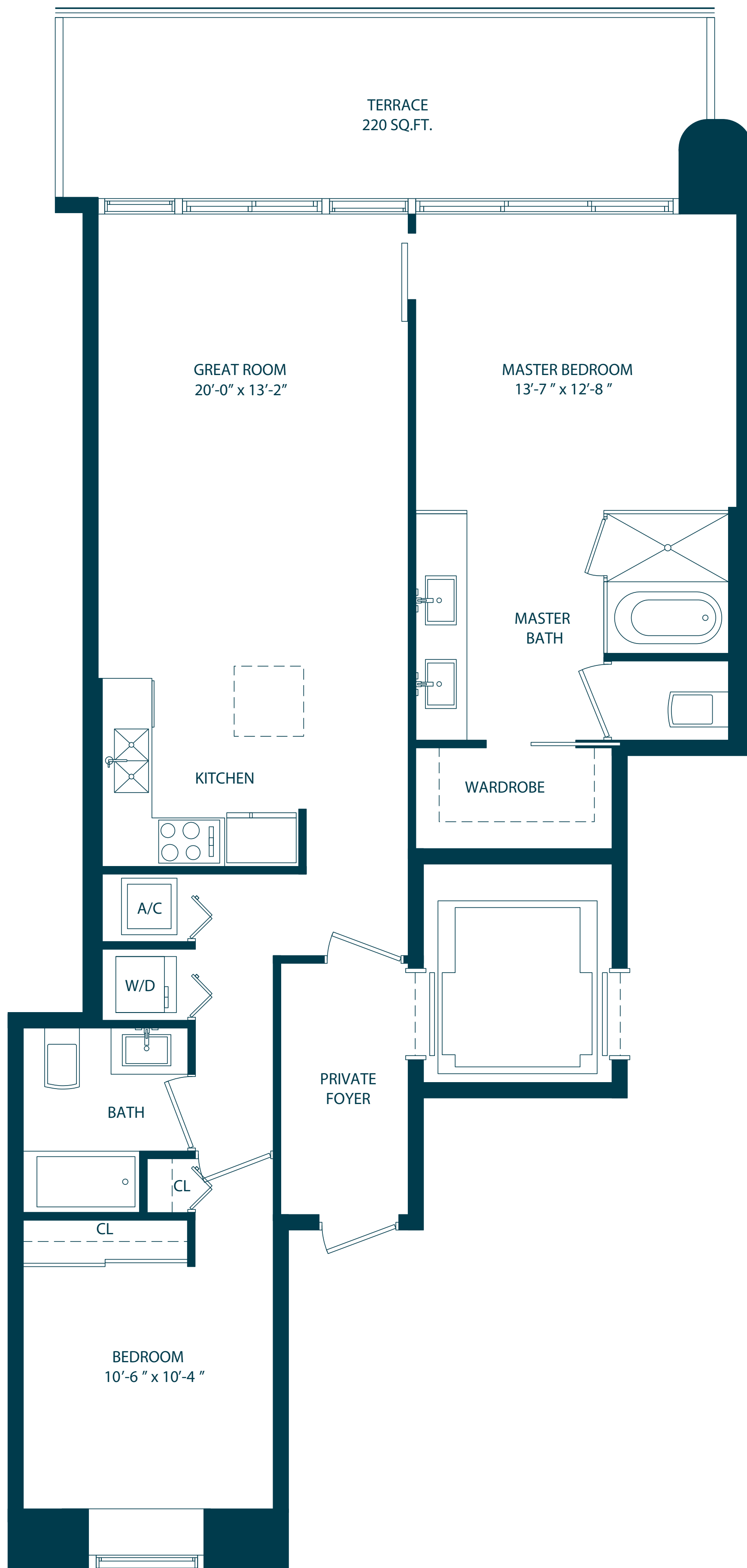


**RESIDENCE 04**  
**3 BEDROOMS + DEN / 3 1/2 BATHS**  
 LEVELS 12<sup>th</sup> TO 49<sup>th</sup>

A/C INTERIOR AREA	1,680 SQ.FT.	156.08 SQ.M.
TERRACE AREA	354 SQ.FT.	32.88 SQ.M.
TOTAL RESIDENCE	2,034 SQ.FT.	188.96 SQ.M.

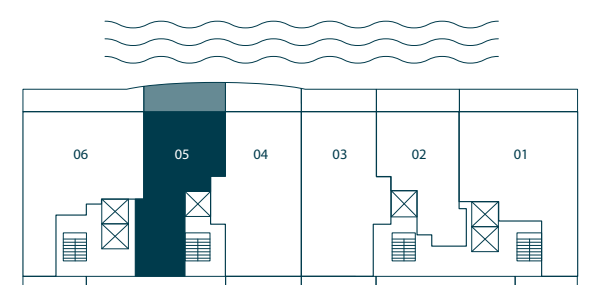


Stated dimensions are measured to the exterior boundaries of the exterior walls and the centerline of interior demising walls and in fact vary from the dimensions that would be determined by using the description and definition of the "Unit" set forth in the Declaration (which generally only includes the interior airspace between the perimeter walls and excludes interior structural components). For your reference, the area of the Unit, determined in accordance with those defined unit boundaries, is + or - 1,439 sq. ft. for unit 04. Note that measurements of rooms set forth on this floor plan are generally taken at the greatest points of each given room (as if the room were a perfect rectangle), without regard for any cutouts. Accordingly, the area of the actual room will typically be smaller than the product obtained by multiplying the stated length times width. All dimensions are approximate and may vary with actual construction, and all floor plans and development plans are subject to change.

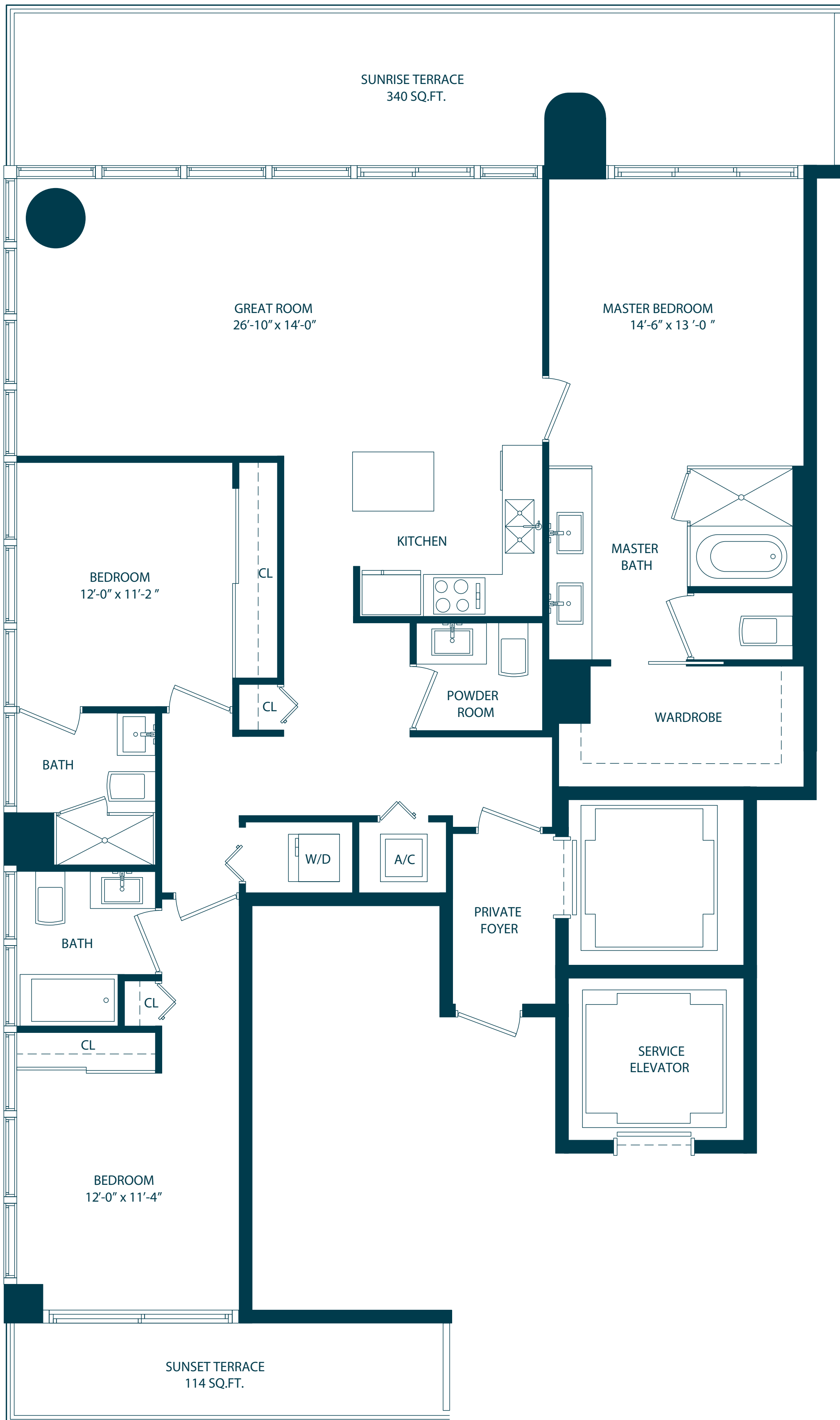


**RESIDENCE 05**  
**2 BEDROOMS / 2 BATHS**  
 LEVELS 12<sup>th</sup> TO 49<sup>th</sup>

A/C INTERIOR AREA	1,285 SQ.FT.	119.38 SQ.M.
TERRACE AREA	220 SQ.FT.	20.43 SQ.M.
TOTAL RESIDENCE	1,505 SQ.FT.	139.81 SQ.M.

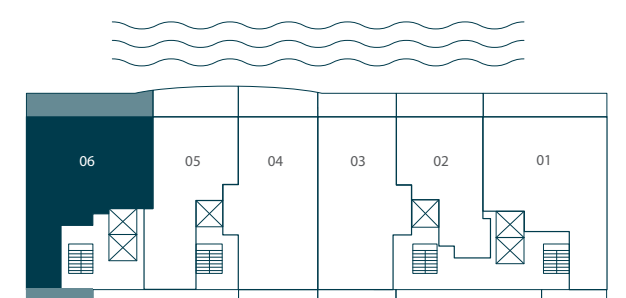


Stated dimensions are measured to the exterior boundaries of the exterior walls and the centerline of interior demising walls and in fact vary from the dimensions that would be determined by using the description and definition of the "Unit" set forth in the Declaration (which generally only includes the interior airspace between the perimeter walls and excludes interior structural components). For your reference, the area of the Unit, determined in accordance with those defined unit boundaries, is + or - 1,041 sq. ft. for unit 05. Note that measurements of rooms set forth on this floor plan are generally taken at the greatest points of each given room (as if the room were a perfect rectangle), without regard for any cutouts. Accordingly, the area of the actual room will typically be smaller than the product obtained by multiplying the stated length times width. All dimensions are approximate and may vary with actual construction, and all floor plans and development plans are subject to change.

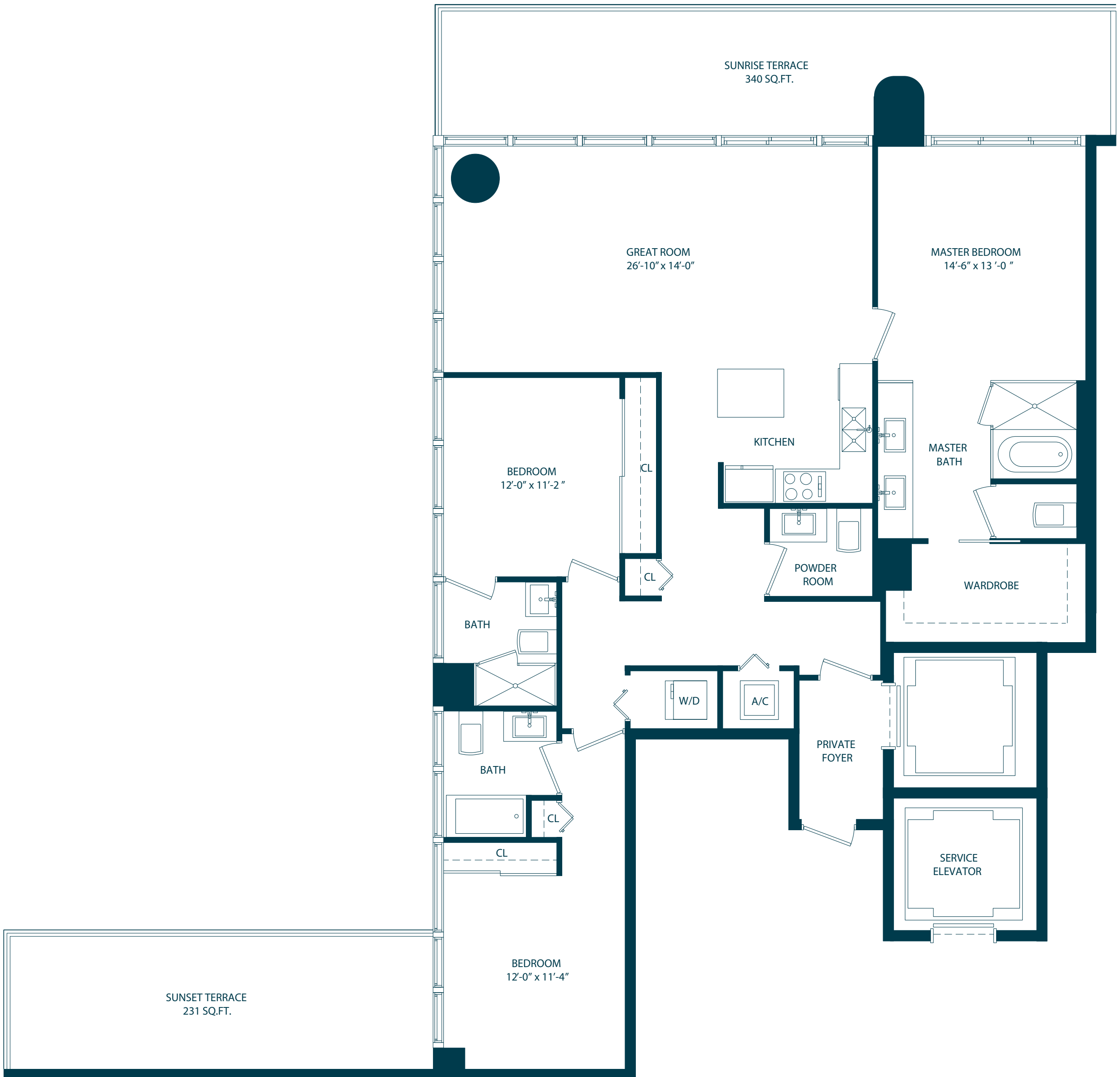


**RESIDENCE 06**  
**3 BEDROOMS / 3 1/2 BATHS**  
 LEVELS 12<sup>th</sup> TO 49<sup>th</sup>

A/C INTERIOR AREA	1,873 SQ.FT.	174.01 SQ.M.
TERRACE AREA	454 SQ.FT.	42.17 SQ.M.
TOTAL RESIDENCE	1,524 SQ.FT.	141.58 SQ.M.

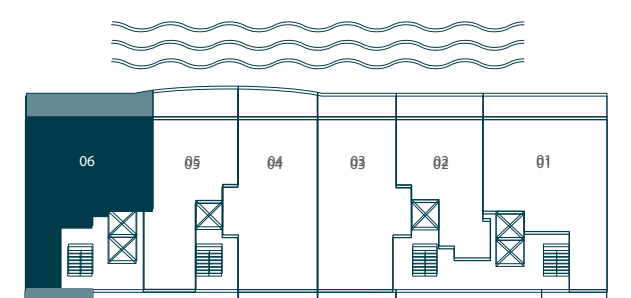


Stated dimensions are measured to the exterior boundaries of the exterior walls and the centerline of interior demising walls and in fact vary from the dimensions that would be determined by using the description and definition of the "Unit" set forth in the Declaration (which generally only includes the interior airspace between the perimeter walls and excludes interior structural components). For your reference, the area of the Unit, determined in accordance with those defined unit boundaries, is + or - 1,530 sq. ft. for unit 06. Note that measurements of rooms set forth on this floor plan are generally taken at the greatest points of each given room (as if the room were a perfect rectangle), without regard for any cutouts. Accordingly, the area of the actual room will typically be smaller than the product obtained by multiplying the stated length times width. All dimensions are approximate and may vary with actual construction, and all floor plans and development plans are subject to change.



**RESIDENCE 06-MOD**  
**3 BEDROOMS / 3 1/2 BATHS**  
 LEVELS 3<sup>rd</sup> TO 9<sup>th</sup>

A/C INTERIOR AREA	1,865 SQ.FT.	173.26 SQ.M.
TERRACE AREA	454 SQ.FT.	42.17 SQ.M.
TOTAL RESIDENCE	2,319 SQ.FT.	215.43 SQ.M.



Stated dimensions are measured to the exterior boundaries of the exterior walls and the centerline of interior demising walls and in fact vary from the dimensions that would be determined by using the description and definition of the "Unit" set forth in the Declaration (which generally only includes the interior airspace between the perimeter walls and excludes interior structural components). For your reference, the area of the Unit, determined in accordance with those defined unit boundaries, is + or - 1,530 sq. ft. for unit 06. Note that measurements of rooms set forth on this floor plan are generally taken at the greatest points of each given room (as if the room were a perfect rectangle), without regard for any cutouts. Accordingly, the area of the actual room will typically be smaller than the product obtained by multiplying the stated length times width. All dimensions are approximate and may vary with actual construction, and all floor plans and development plans are subject to change.