

SAN BERNARDINO COUNTY

AT YOUR SERVICE

RESIDENT GUIDE



RESIDENT GUIDE

WWW.SBCOUNTY.GOV
(888) 818-8988



A Letter from the County Board of Supervisors



1853
County of San Bernardino

**COUNTY OF
SAN BERNARDINO**
County Administrative Office
385 North Arrowhead Avenue
San Bernardino, CA 92415-0120
(909) 387-5418
FAX: (909) 387-5430

BOARD OF SUPERVISORS

Brad Mitzelfelt, Vice ChairFirst District
Janice RutherfordSecond District
Neil DerryThird District
Gary C. Ovitt,Fourth District
Josie Gonzales, ChairFifth District

A Letter from the County Board of Supervisors

Fellow Residents of San Bernardino County:

This *At Your Service Guide* is designed to put information about San Bernardino County's most frequently used government services in a convenient format that you can customize on the back cover with additional information of your own. Whether you're a long-time resident or new to the region, the guide's aim is to help you access everything from earthquake preparedness to pest control, from camping permits to wedding licenses.

San Bernardino County is growing. We've gained 300,000 new residents since the year 2000, and we expect another 300,000 to relocate by 2012. That's the equivalent of adding two cities the size of San Bernardino in little more than a decade.

Growth of that magnitude requires increased services — and effective tools to enable natives and newcomers alike to find information about where to turn for help. Not only is our county growing quickly, San Bernardino County is the largest county in the contiguous United States, so we have to spread services geographically farther than most counties and even some states — 24 cities and more than 20,000 square miles. We work to coordinate delivery of services with municipal governments as well, so you'll find general contact information for every city in the county included in these pages.

To make this guide as useful as possible, we talked with county residents and employees in focus groups. They helped us identify values and opportunities that make our county special. This guide draws on their suggestions in its organization, appearance, and the overriding theme: *At Your Service*.

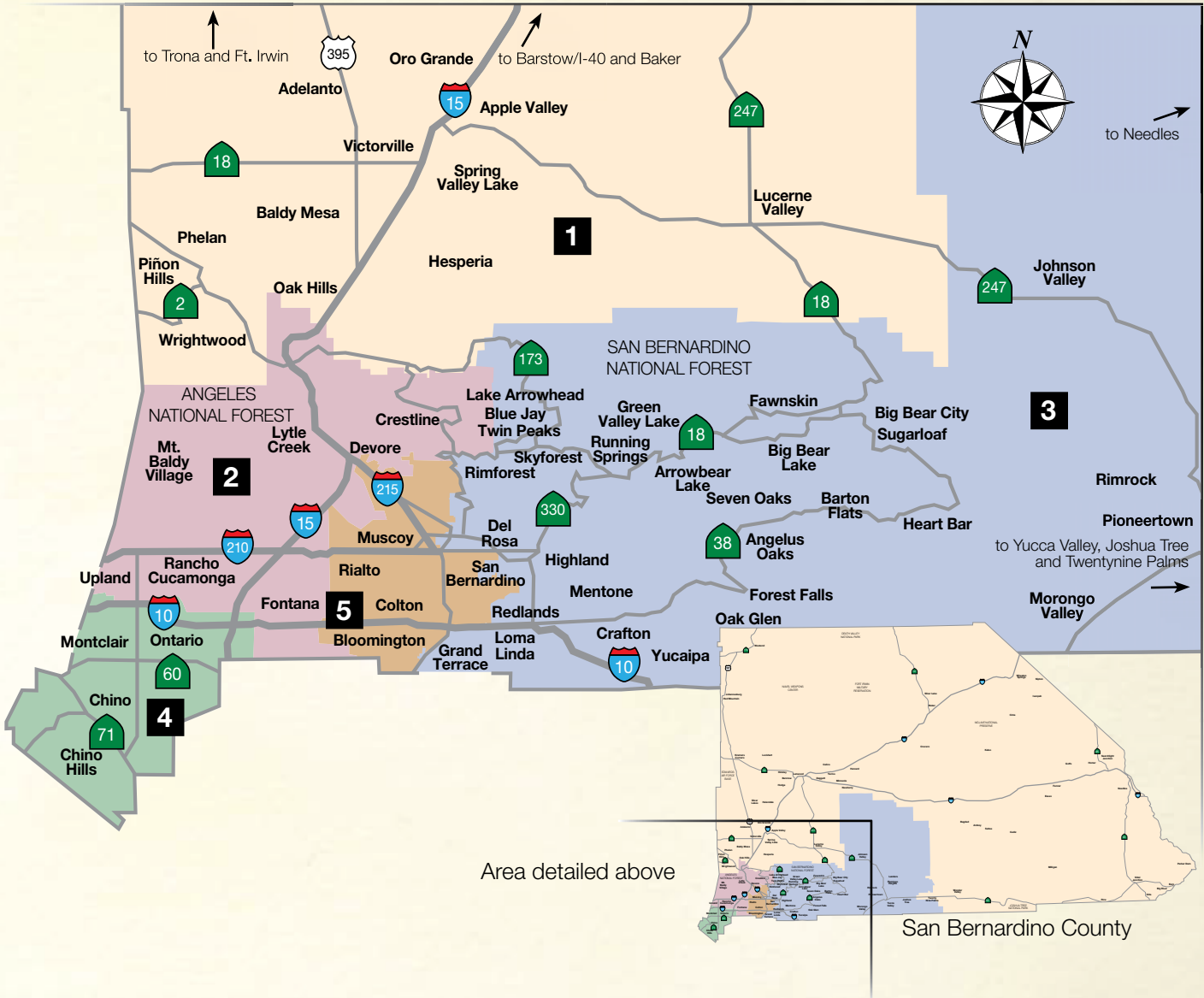
We've all experienced the splendor and spirit that makes this county great. With this guide I hope you will become equally familiar with the strength, expertise and responsiveness of your county government. The services we provide are intended to help San Bernardino County residents and our region achieve our full potential. Finally, even more information is available on the county's web site at www.sbcounty.gov. All of us who work for San Bernardino County government are here to help, and we're proud to be *At Your Service*.

The County Board of Supervisors

Table of Contents

County Supervisorial Districts & Supervisors . . .	1
County Org. Chart & County Facts	2
San Bernardino County Cities	3
Healthy Communities, Smart Growth and Green County	4
Public Safety	8
Arts Culture & Tourism	10
Economic Development & Business Services	13

San Bernardino County Supervisorial Districts



San Bernardino County Board of Supervisors



1
Brad Mitzelfelt, Vice Chair
 First District
 (909) 387-4830
 Hesperia
 (760) 955-5400
 Barstow
 (760) 256-4748



2
Janice Rutherford
 Second District
 (909) 387-4833
 Rancho Cucamonga
 (909) 945-4297



3
Neil Derry
 Third District
 (909) 387-4855
 Big Bear
 (909) 866-0140
 Yucca Valley
 (760) 228-5402



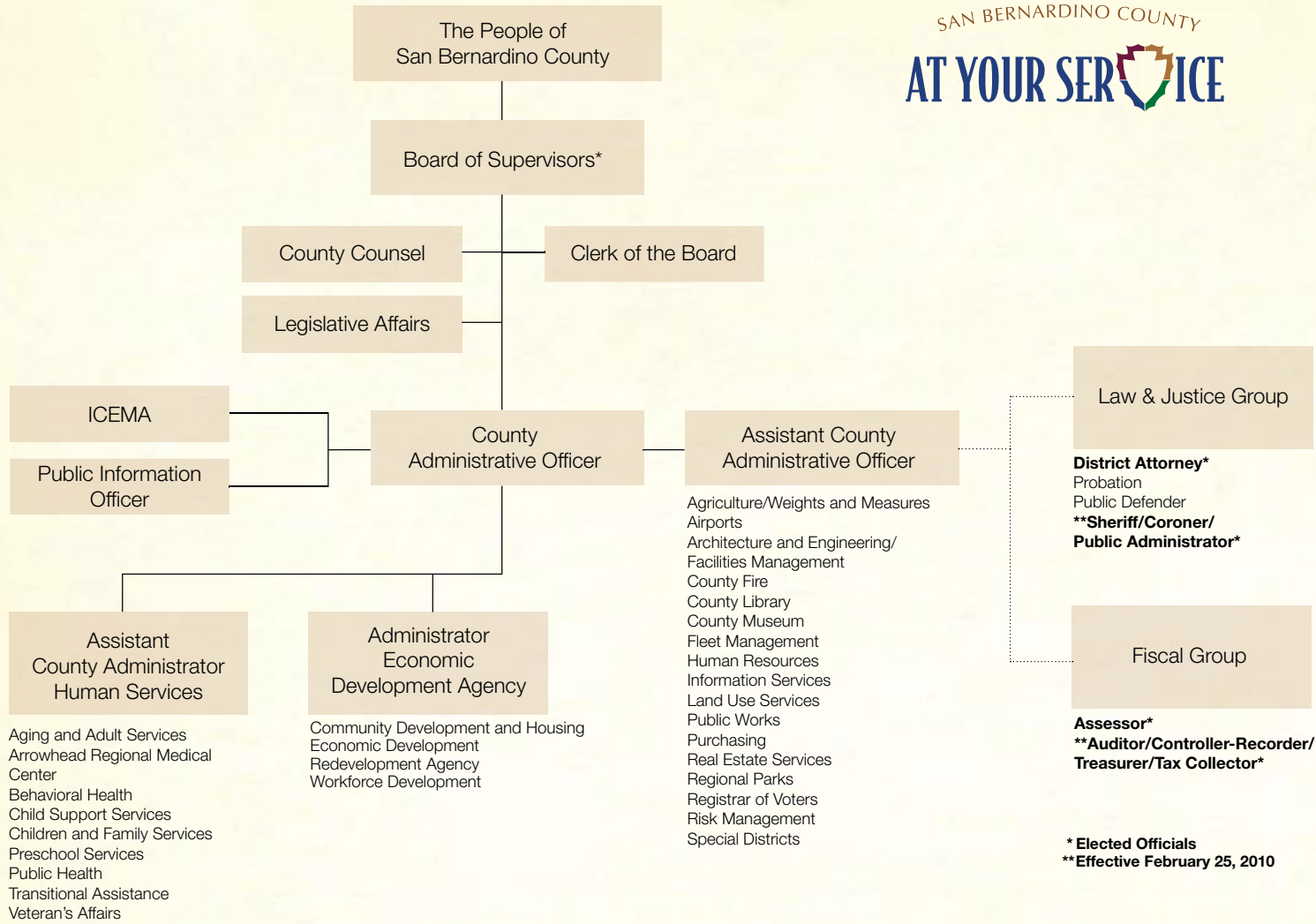
4
Gary C. Ovitt
 Fourth District
 (909) 387-4866
 Chino Hills
 (909) 465-1895



5
Josie Gonzales, Chair
 Fifth District
 (909) 387-4565

Find other elected representatives
www.sbcrov.com

San Bernardino County Organizational Chart



San Bernardino County Facts and Figures

SIZE: 20,160 square miles (largest county in the contiguous United States by area)

ELEVATION: Highest Elevation, Mt. San Geronio, 11,502 ft.

INCORPORATED CITIES: 24

POPULATION BY CITY

Incorporated City	Total 1/1/2008 Estimated Population
Adelanto	28,181
Apple Valley	70,092
Barstow	23,952
Big Bear Lake	6,256
Chino	82,670

Chino Hills	78,957
Colton	51,918
Fontana	188,498
Grand Terrace	12,543
Hesperia	87,820
Highland	52,503
Loma Linda	22,632
Montclair	37,017
Needles	5,807
Ontario	173,690
Rancho Cucamonga	174,308
Redlands	71,807
Rialto	99,767
San Bernardino	205,493

Twentynine Palms	27,966
Upland	75,137
Victorville	107,408
Yucaipa	52,063
Yucca Valley	21,268
Total Incorporated	1,757,753
Total Unincorporated	298,013
County Population Total	2,055,766

Source: State of California, Department of Finance, E-1: Population
 Estimate with Annual Percentage Change-
 January 1, 2007 and 2008.
 Sacramento, California, May 2008.

San Bernardino County Cities and Towns

Adelanto

11600 Air Expressway
Adelanto, CA 92301
(760) 246-2300
www.ci.adelanto.ca.us
District 1

Apple Valley

14955 Dale Evans Parkway
Apple Valley, CA 92307
(760) 240-7000
www.applevalley.org
District 1

Barstow

220 E. Mountain View St.
Barstow, CA 92311
(760) 256-3531
www.barstowca.org
District 1

Big Bear Lake

39707 Big Bear Blvd.
Big Bear Lake, CA 92315
(909) 866-5831
www.citybigbearlake.com
District 3

Chino

13220 Central Ave.
Chino, CA 91710
(909) 627-7577
www.cityofchino.org
District 4

Chino Hills

14000 City Center Dr.
Chino Hills, CA 91709
(909) 364-2600
www.chinohills.org
District 4

Colton

650 N. La Cadena Dr.
Colton, CA 92324
(909) 370-5099
www.ci.colton.ca.us
District 5

Fontana

8353 Sierra Ave.
Fontana, CA 92335
(909) 350-7600
www.fontana.org
Districts 2, 5

Grand Terrace

22795 Barton Rd.
Grand Terrace, CA 92313
(909) 824-6621
www.cityofgrandterrace.org
District 3

Hesperia

9700 Seventh Ave.
Hesperia, CA 92345
(760) 947-1000
www.cityofhesperia.us
District 1

Highland

27215 Base Line St.
Highland, CA 92346
(909) 864-6861
www.ci.highland.ca.us
District 3

Loma Linda

25541 Barton Rd.
Loma Linda, CA 92354
(909) 799-2800
www.ci.loma-linda.ca.us
District 3

Montclair

5111 Benito St.
Montclair, CA 91763
(909) 626-8571
www.ci.montclair.ca.us
District 4

Needles

817 Third St.
Needles, CA 92363
(760) 326-2113
www.cityofneedles.com
District 1

Ontario

303 East "B" St.
Ontario, CA 91764
(909) 395-2000
www.ci.ontario.ca.us
District 4

Rancho Cucamonga

10500 Civic Center Dr.
Rancho Cucamonga, CA 91730
(909) 477-2700
www.ci.rancho-cucamonga.ca.us
District 2

Redlands

35 Cajon St.
Redlands, CA 92373
(909) 798-7500
www.ci.redlands.ca.us
District 3

Rialto

150 S. Palm Ave.
Rialto, CA 92376
(909) 820-2525
www.rialtoqa.org
District 5

San Bernardino

300 North "D" St.
San Bernardino, CA 92418
(909) 384-5211
www.ci.san-bernardino.ca.us
Districts 3, 5

Twentynine Palms

6136 Adobe Rd.
Twentynine Palms, CA 92277
(760) 367-6799
www.ci.twentynine-palms.ca.us
District 1

Upland

460 N. Euclid Ave.
Upland, CA 91786
(909) 931-4100
www.ci.upland.ca.us
District 2

Victorville

14343 Civic Dr.
Victorville, CA 92393
(760) 955-5000
www.ci.victorville.ca.us
District 1

Yucaipa

34272 Yucaipa Blvd.
Yucaipa, CA 92399
(909) 797-2489
www.yucaipa.org
District 3

Yucca Valley

57090 Twentynine Palms Hwy.
Yucca Valley, CA 92284
(760) 369-7207
www.yucca-valley.org
District 3

LEGEND

District 1:

Brad Mitzelfelt (909) 387-4830

District 2:

Janice Rutherford (909) 387-4833

District 3:

Neil Derry (909) 387-4855

District 4:

Gary C. Ovitt (909) 387-4866

District 5:

Josie Gonzales (909) 387-4565



Healthy Communities, Smart Growth and Green County

Promoting healthy communities starts with the physical and mental health of our citizens. Smart growth means making wise choices about how and where we expand. It also means making wise choices about how and where we expand businesses, residential communities, agricultural and industrial activities. County government is focused on developing sustainable resources, including energy, to ensure long-term prosperity. Another priority is helping residents access educational resources and develop the competitive skills that will serve them well in the emerging economy.



**HEALTHY COMMUNITIES,
SMART GROWTH AND
GREEN COUNTY**

Basic Resident Information

EMERGENCY 911

Non-emergency health & social service referrals 211
 or call (888) 435-7565

Childcare	Food	Housing
Donations	Healthcare	Volunteering
Emergency Shelter	Homelessness	www.211sb.org

Assessor	(909) 387-8307
.	(877) 885-7654
<i>Exemptions, title transfers, other property and tax information</i>	
www.sbcounty.gov/assessor	
Assessment Appeals	(909) 387-4413
www.sbcounty.gov/assessmentappeals	
Auditor/Controller-Recorder	(909) 387-8322
.	(866) 227-3880
<i>Marriage licenses, fictitious business names, notary, other registrations, birth/death/marriage certificates, recording services</i>	
www.sbcounty.gov/acr	
Birth and Death Records	(909) 381-8990
<i>Vital Statistics Office: events occurring in current year and previous year</i>	

California Employment Development Department
Unemployment claims, search job listings, training opportunities
www.edd.ca.gov

California State Attorney General
Consumer protection
www.ag.ca.gov

Community Action Partnership (909) 723-1500
Food bank, motel vouchers, transportation, utility and weatherization assistance
www.capsbc.org

Community Development & Housing (909) 388-0800
Home ownership assistance, purchase, improvement, repair, emergency shelter, fair housing, tenant/landlord mediation
www.sbcounty.gov/eda/cdh

County Workforce Development Department (800) 451-JOBS
Job seeker services, job training assistance
www.csb-win.org

Foreclosure Assistance – HUD counseling (800) 569-4287
www.hud.gov/foreclosure/index.cfm

Inland Empire Economic Recovery Corporation (877) 418-7943
Foreclosure prevention, home buyer education assistance and seminars
www.ieerc.org

Office of Homeless Services. (909) 387-7448
www.sbcounty.gov/ohs

Public Administrator (909) 387-6249
Estate management for deceased without executors, estate property sales
www.mypublicadministrator.com

Registrar of Voters (909) 387-8300
www.sbcrov.com

Report Suspected Fraud or Abuse of County Resources (800) 547-9540
www.sbcounty.gov/acr/hotline.htm

Treasurer-Tax Collector. (909) 387-8308
Property tax bills and payment options, tax sales, mobile home tax clearance certificates, transient occupancy tax filings
www.mytaxcollector.com

Education

Colleges & Universities

Barstow College (760) 252-2411
www.barstow.edu

California State University, San Bernardino (909) 537-5000
www.csusb.edu

Chaffey College (909) 652-6000
www.chaffey.edu

Copper Mountain Community College (760) 366-3791
www.cmccd.edu

Crafton Hills College (909) 794-2161
www.craftonhills.edu

Loma Linda University (800) 422-4558
www.llu.edu

San Bernardino Community College District (909) 382-4000
www.sbccd.org

San Bernardino Valley College (909) 384-4400
www.valleycollege.edu

University of Redlands (909) 793-2121
www.redlands.edu

Victor Valley Community College. (760) 245-4271
www.vvc.edu

Preschool Services

Head Start: State Preschool Program. (909) 383-2000
www.sbcounty.gov/psd

San Bernardino County Superintendent of Schools

Kindergarten-12 (909) 888-3228
www.sbcss.k12.ca.us

Green County/Recycling

Air Quality

Report vehicles with excessive fumes. (800) CUTSMOG
www.aqmd.gov/

Agriculture/Weights and Measures

Consumer protection, pest control advice, farmers markets (800) 734-9459
www.sbcounty.gov/awm

Aging and Adult Services

- Serves 780,000 meals to seniors annually

Agriculture/Weights & Measures

- Verifies quality standards for more than 12,000,000 eggs annually
- Checks price accuracy on nearly 40,000 store items annually

Public Health

- Provides approximately 33,000 immunizations annually



Paper or plastic? Remember to say no to both. In 2008 the County seeded the community with more than 30,000 sturdy, reusable and recyclable Green County bags. Businesses countywide also offer reusable and recyclable bags in continuing support of residents efforts to reduce plastics consumption and waste wherever they can.

Green County

Go to: www.sbcounty.gov/greencountysb for information on: *Energy incentives, building fee waivers, Green Building Program, landscaping tips and rebate programs*

County Code Enforcement (800) 722-3181
Report abandoned vehicles, discarded debris, vegetation abatement and off-highway vehicle complaints
www.sbcounty.gov/landuseservices/code_enforcement

Green Building Program. (909) 387-4244
Priority inspections, accelerated plan review and fee waivers for projects meeting energy efficient standards

Landfill locations recycling/waste disposal info . . (909) 386-8701
www.sbcounty.gov/dpw/solidwaste

Household Hazardous Waste Disposal (800) 645-9228
Cleaners, batteries, oil, pool/lawn/pest products, paint, medications, electronic waste
www.sbcfire.org/hazmat/hhw.asp

Non-Hazardous Materials Exchange Service. . . (800) 722-8004
Find other users for materials that might otherwise be discarded into landfills
www.sbcountymax.org

Resident Assistance

Behavioral Health Services

Department call center, **24/7**: (888) 743-1478
 (909) 381-2420
www.sbcounty.gov/dbh/CrisisServices

Behavioral Health Clinics

Barstow Counseling Center (760) 256-5026
 Mesa Counseling Center, Rialto (909) 421-9200
 Needles Behavioral Health Center. (760) 326-9313
 Phoenix Community Counseling Center,
 San Bernardino (909) 387-7200
 Upland Community Counseling (909) 579-8100
 Victor Valley Behavioral Health (760) 955-1777
 Vista Community Counseling, Fontana (909) 854-3420

Children and Family Services

Child Abuse Hotline. (800) 827-8724

Children and Family Services Administration (909) 388-0242
www.sbcounty.gov/dcs

Barstow (760) 255-5400
 Needles (760) 326-9275
 Rancho Cucamonga (909) 945-3762
 Rialto (909) 421-7711
 San Bernardino (Carousel Mall) (909) 388-1900
 San Bernardino (Gifford St.). (909) 386-1100
 Victorville. (760) 243-6640
 Yucca Valley (760) 228-5300

Child Support Services

Department of Child Support Services (866) 901-3212
www.sbcounty.gov/dcss

Food Banks

Community Action Partnership Food Bank (909) 723-1580
www.capsbc.org/foodbank

Hospitals

ARMC (Arrowhead Regional Medical Center),
 Colton (909) 580-1000
 ARMC Family Health Centers (FHC) (909) 422-8029
 Arrowhead Fontana FHC (Fontana)
 Arrowhead McKee FHC (San Bernardino)
 Arrowhead Westside FHC (San Bernardino)
 Barstow Community Hospital (760) 256-1761
 Bear Valley Community Hospital, Big Bear Lake (909) 866-6501
 Chino Valley Medical Center (909) 464-8600
 Desert Valley Hospital, Victorville (760) 241-8000
 Kaiser Foundation Hospital, Fontana (909) 427-5000
 Loma Linda University Medical Center (909) 558-4000

Montclair Hospital Medical Center (909) 625-5411
 Mountains Community Hospital,
 Lake Arrowhead (909) 336-3651
 Redlands Community Hospital (909) 335-5500
 San Antonio Community Hospital, Upland (909) 985-2811
 San Bernardino Community Hospital (909) 887-6333
 St. Bernardine Medical Center (909) 883-8711
 St. Mary's Medical Center, Apple Valley. (760) 242-2311
 Victor Valley Community Hospital, Victorville (760) 245-8691

Public Health Department

Public Health Clinics (800) 782-4264
www.sbcounty.gov/pubhlth/

Appointment and Information Line (800) 722-4777

Adelanto	Hesperia	Redlands
Barstow	Joshua Tree	San Bernardino
Big Bear	Needles	
Fontana	Ontario	

Healthy San Bernardino County
Community health data and resources
www.healthysanbernardinocounty.org

Tuberculosis Clinic (800) 722-4794
 HIV/AIDS Clinic. (909) 383-3060

Restaurant Ratings

Restaurant Ratings (909) 884-4056
Food establishment complaints, recalls
www.sbcounty.gov/dehs

Senior Information & Assistance

Elder Abuse Hotline. (877) 565-2020

Department of Aging and Adult Services
www.sbcounty.gov/daas

Nutrition Programs General Information (800) 510-2020
 Public Guardian, Conservator (909) 798-8500

Senior Centers

Barstow Senior Center (760) 256-5023
 Big Bear Parks and Recreation (909) 584-0323
 Bonnie Baker Senior Citizens Club,
 Big River (760) 665-2667
 City of Montclair (909) 626-8571
 City of San Bernardino (909) 384-5434
 Crest Forest Senior Citizens' Club, Crestline (909) 338-5036
 Family Service Association,
 San Bernardino Valley and East End (951) 342-3057
 Hi-Desert Meals-On-Wheels (760) 245-7047
 Hinkley Citizens Club. (760) 253-4677
 Lucerne Valley Senior Center (760) 248-2248
 Steel Workers Oldtimers,
 San Bernardino Valley and West End (909) 829-0384

Transitional Assistance Department

Administration (909) 388-0245
www.sbcounty.gov/tad

CalWORKs, food stamps, Medi-Cal, general relief, cash aid, foster care, child care, social security-SSA/SSI

- Adelanto (760) 530-2900
- Barstow (760) 256-4374
- Colton (909) 421-3108
- Del Rosa (909) 475-8561
- Fontana (909) 356-3221
- Hesperia (760) 956-4697
- Needles (760) 326-9260
- Ontario (909) 933-6330
- Rancho Cucamonga (909) 945-0999
- Redlands (909) 335-0666
- San Bernardino, 4th St. (909) 252-4601
- San Bernardino, Massachusetts Ave. (909) 475-2074
- Twentynine Palms (760) 361-4636
- Victorville (760) 955-5840
- West End Medi-Cal Office (909) 458-9466
- Yucca Valley (760) 228-5372

Veteran Affairs

Administration (909) 387-5516
 (866) 4SB-VETS
www.sbcounty.gov/va

Women, Infants and Children (WIC) Services

WIC Services (800) 472-2321
Nutrition, education and food supplement
www.wicworks.ca.gov

Land Use

Land Use Services
Planning and building permits
www.sbcounty.gov/landuseservices

- Barstow (760) 256-4750
- Big Bear (909) 866-0170
- San Bernardino (909) 387-4131
- Twin Peaks (909) 336-0640
- Victorville (760) 843-4340
- Yucca Valley (760) 228-5430

Special Districts

- Sewer backup/stoppage, open manholes (760) 955-9885
- (800) 554-0565
- Street light outages (909) 387-5940



Arrowhead Regional Medical Center is a state-of-the-art, acute-care facility embracing advanced technology in all patient care. It is a Level II Trauma Center and the only Burn Center serving a four-county region. The Medical Center offers the latest in patient care by providing a full range of acute and psychiatric inpatient and outpatient services, and also offers primary care services at three off-campus community health centers.

Located immediately north of I-10 and Pepper Avenue in Colton, the main campus features an Omnitrans bus hub, making ARMC convenient and accessible to county residents.

Mass Transit

Barstow Area Transit (760) 256-0311/15
Omnitrans (800) 966-6428
www.omnitrans.org

MARTA (Mountain Area Regional Transit Authority)
 (909) 548-1111/13
www.marta.cc/

Metrolink (800) 371-5465
www.metrolinktrains.com

Morongo Basin Transit (800) 794-6282

Victor Valley Transit Authority (760) 948-3030

SANBAG (San Bernardino Associated Governments)
 (909) 884-8276
Freeway construction, transportation funding, freeway service patrol, call boxes, rideshare and rail crossings

Public Works

County Road System (909) 387-8063
Closures, operation, maintenance, improvements
www.sbcounty.gov/dpw/transportation

Department of Public Works (909) 387-8104
General Info: flood control, roads, traffic, solid waste
www.sbcounty.gov/dpw



Public Safety

Keeping every resident safe in California's largest county is a top priority and a geographic challenge. The San Bernardino County Fire Department protects more than 16,000 square miles — an area almost twice the size of the State of New Jersey — and the Sheriff's Department provides law enforcement to more than half of the county's 24 cities as well as all of the unincorporated areas. Below is the contact information for county offices that respond to disasters, offer emergency services, investigate crimes, administer justice and provide other public safety services.



EMERGENCY..... 911

WeTip hotline
www.wetip.com

Report suspicious activity/crime anonymous reporting

Hotlines:

- Crime (800) 78-CRIME
- Drugs (800) 47-DRUGS
- Arson (800) 47-ARSON
- Fraud (800) US-FRAUD
- CalTIP hotline: poachers & polluters (888) 334-2258
www.dfg.ca.gov/enforcement/caltip.aspx
- Child Abuse (800) 827-8724
www.sbcounty.gov/dcs
- Elder Abuse (877)-565-2020
hss.sbcounty.gov/daas
- Graffiti Removal (877) 442-2283

Law Enforcement

Coroner (909) 387-2978
www.sbcounty.gov/sheriff/coroner/about_coroner.asp

Courts

Traffic tickets and courts information
www.sbcounty.gov/courts/flash.asp

District Attorney (909) 387-8309
Consumer/insurance fraud, victim services, public integrity issues
www.sbcounty.gov/da

Family Violence Unit:

- Central Region (909) 387-6534
- West End (909) 945-4245
- Desert (760) 243-8643

Victim Services Unit:

- Central Region (909) 387-6540
- West End (909) 945-4241
- Desert (760) 951-3413

Jails (909) 350-2476
www.sbcounty.gov/sheriff/detentions/corrections.asp

Probation (909) 387-5874
www.sbcounty.gov/probation

Public Defender (909) 382-7639
www.sbcounty.gov/publicdefender

Sheriff (909) 387-3545
www.sbcounty.gov/sheriff

Public Safety Concerns

- Animal Care/Control (800) 472-5609
www.sbcounty.gov/acc
- Animals, dead on roadways (909) 387-8063
County Public Works
- Disaster preparedness (909) 386-8472
Public education and tips
www.sbcounty.gov
- Disaster Incident Information Line (909) 355-8800
- Fire Department (909) 387-5974
- Dispatch (909) 356-3805
www.sbcounty.gov
- Fish & Game Inland Desert Region (909) 484-0167
www.dfg.ca.gov/regions/6
- Hazmat (800) 33-TOXIC
www.sbcounty.gov/hazmat/index.asp
- Mosquito/Insect Control (909) 388-4600
www.sbcounty.gov/dehs/vectorcontrol
- Office of Emergency Services (909) 356-3998
www.sbcounty.gov/oes
- Pesticides, Pest Control Complaints (800) 734-9459
www.sbcounty.gov/awm/pestprevention
- Tree removal – hazardous/dead/dying (909) 336-7080
www.sbcounty.gov/dpw/land

Weather and Road Conditions

- California Highway Patrol (800) TELL CHP
www.chp.ca.gov
- CALTRANS/Highway Conditions (800) 427-ROAD
www.dot.ca.gov
- National Weather Service
www.nws.noaa.gov



Community Emergency Response Team

Following a major disaster, first responders who provide fire and medical services will almost certainly not be able to meet the overwhelming demand for these life-saving services. CERT classes are designed to give residents the knowledge and the skills they need to help themselves and their neighbors.

Residents interested in learning more about the CERT program may contact the Emergency Manager for their city or town, or, if in an unincorporated area, call (909) 356-3998 and ask for the CERT Coordinator.



QUICK FACTS

Sheriff-Coroner

- Dispatch Centers annually receive more than 1,100,000 calls
- Manages close to 6,000 inmates each day in county jails

District Attorney

- The DA filed 67,840 cases in 2009 and has the highest per capita state prison commitment rate in California

Probation

- Supervises over 20,000 adult and approximately 5,000 juvenile offenders in the community



Arts, Culture and Tourism

San Bernardino County boasts long-established artistic traditions. The Redlands Bowl Summer Music Festival premiered in 1923 and is the nation's oldest, continuous free classical music festival. New arts flourish too, thanks to capacity-building grants and programs. Our state-of-the-art libraries, museums, concert arenas and sports venues offer a broad menu of cultural and entertainment options. Primary arts, culture and tourism resources are listed below. For more detailed local information, check with your city or local chamber of commerce.



ARTS, CULTURE AND TOURISM

Entertainment

- Arrowhead Credit Union Ballpark, San Bernardino (909) 888-9922
www.arrowheadcreditunionpark.com/baseball
- Auto Club Speedway, Fontana (800) 944-7223
www.autoclubspeedway.com
- California Theatre, San Bernardino (909) 885-5152
www.theatricalarts.com
- Citizens Business Bank Arena, Ontario (909) 244-5500
www.cbbankarena.com
- Footlighters Theatre (909) 793-2909
www.redlandsfootlighters.org
- Mavericks Stadium, Adelanto (760) 246-6287
web.minorleaguebaseball.com
- Quakes Stadium, Rancho Cucamonga (909) 481-5000
www.rcquakes.com
- Redlands Bowl (909) 793-7316
www.redlandsbowl.org
- Redlands Symphony (909) 748-8018
www.redlandssymphony.com
- San Bernardino Symphony Orchestra (909) 381-5388
www.sanbernardinosophony.org
- San Manuel Amphitheater, Devore (909) 880-6500
www.sbcounty.gov/parks
- Victoria Gardens Cultural Center, Rancho Cucamonga
Lewis Family Playhouse (909) 477-2752
www.vgculturalcenter.com

Libraries

- County Librarian (909) 387-5720
www.sbcounty.gov/library/home
- County Branches:**
- Adelanto (760) 246-5661
- Apple Valley (760) 247-2022
- Barstow (760) 256-4850
- Big Bear Lake (909) 866-5571
- Bloomington (909) 877-1453
- Carter High School, Rialto (909) 854-4100, x28148
- Chino (909) 465-5280
- Chino Hills (909) 590-5380
- Crestline (909) 338-3294
- Fontana (909) 574-4500
- Grand Terrace (909) 783-0147
- Hesperia (760) 244-4898
- Highland (909) 425-4700
- Joshua Tree (760) 366-8615
- Kaiser High School, Fontana (909) 357-5900, x8029
- Lake Arrowhead (909) 337-3118
- Loma Linda (909) 796-8621

Lucerne Valley	(760) 248-7521
Mentone	(909) 794-0327
Montclair	(909) 624-4671
Needles	(760) 326-9255
Phelan Memorial	(760) 868-3053
Rialto	(909) 875-0144
Running Springs	(909) 867-3604
Summit High School, Fontana	(909) 357-5950, x3024
Trona	(760) 372-5847
Twentynine Palms	(760) 367-9519
Wrightwood	(760) 249-4577
Yucaipa	(909) 790-3146
Yucca Valley	(760) 228-5455



Citizens Business Bank Arena opened in October 2008. This state-of-the-art, 225,000-square-foot facility hosts Ontario Reign ice hockey and a variety of other sporting competitions, concerts, family shows, special events, and community activities as well as private events. The Arena can accommodate capacities of 11,089 for concerts, 9,736 for ice hockey and 10,832 for basketball. The venue is located in Ontario between Haven Avenue, Milliken Avenue and Fourth Street off the I-10 Freeway.



The Sam J. Racadio Highland Library and Environmental Learning Center opened in the spring of 2008 and was designed to meet LEED Gold Certification standards. The energy-efficient, 30,000-square-foot facility has a roof-mounted solar panel array and a 15,000-square-foot roof garden with drought-tolerant plantings. It is the only public library in California to provide and promote environmental education through an Environmental Learning Center.

The library also features a multimedia presentation area, conference room, wet lab, exhibit hall, animal exhibit, exhibit preparation room, and offices for environmental education staff.

QUICK FACTS

Regional Parks

- County parks cover 9,200 acres and contain more than 22 miles of trails
- Mojave Narrows Regional Park boasts over 15,000 species of wildlife and is the only wetland for habitat in the high desert

Movies filmed in San Bernardino County

- The Bucket List - filmed in Fontana (Auto Club Speedway)
- Iron Man - filmed in Fontana (California Steel Mill)
- Into The Wild - filmed in Needles (Moabi Regional Park)
- The Aviator - filmed in San Bernardino (San Bernardino International Airport)

Museums and Historic Places

- San Bernardino County Museum, Redlands . . . (909) 307-2669
www.sbcountymuseum.org
- Agua Mansa Pioneer Cemetery, Colton (909) 370-2091
- Asistencia, outpost of the Mission San Gabriel, Redlands (909) 793-5402
- John Rains House, Rancho Cucamonga (909) 989-4970
- Yorba and Slaughter Families Adobe, Chino . . . (909) 597-8332
- Yucaipa Adobe, Yucaipa (909) 795-3485

National Forests and Parks

- San Bernardino National Forest (909) 382-2600
www.fs.fed.us/r5/sanbernardino



Auto Club Speedway

The Redevelopment Agency works to expand economic opportunity in specific areas of the county. After the closure of the Kaiser Steel Mill in Fontana, the Agency redeveloped more than 3,400 acres, which include the Auto Club Speedway and several large industries, employing thousands. In use 200 days a year, the Speedway brings economic stimulus to the region, supporting local businesses, hotels, restaurants and shopping centers. In a single year of events, the Speedway pumps more than \$210 million into the regional economy.

The Redevelopment Agency continues to encourage economic growth by revitalizing various communities in the high desert, mountains, central and west-valley areas of the county.

- Mojave National Preserve. (760) 252-6100
www.nps.gov/moja
- Joshua Tree National Park (760) 367-5500
www.nps.gov/jotr

Regional Parks and Preserves

- Camping reservations, book online at www.sbcountyparks.com or contact the individual park to reserve picnic shelters or call (877) 38-PARKS*
- Big Morongo Canyon Preserve, Morongo Valley . . (760) 363-7190
 - Calico Ghost Town Regional Park, Yermo (800) TO-CALICO
 - Cucamonga-Guasti Regional Park, Ontario. (909) 481-4205
 - Glen Helen Regional Park, San Bernardino (909) 887-7540
 - Lake Gregory Regional Park, Crestline (909) 338-2233
 - Moabi Regional Park, Needles (760) 326-3831
 - Mojave Narrows Regional Park, Victorville (760) 245-2226
 - Mojave River Forks, Hesperia (760) 389-2322
 - Prado Regional Park, Chino (909) 597-4260
 - Yucaipa Regional Park, Yucaipa (909) 790-3127

State Parks

- www.parks.ca.gov/parkindex/results.asp
- Chino Hills (951) 780-6222
 - Providence Mountains (760) 928-2586
 - Silverwood Lake (760) 389-2281

Tourism

- California State/Inland Empire Welcome Center . . . (909) 891-1874
www.cwcinlandempire.com
- San Bernardino Convention and Visitors Bureau . . (800) 867-8366
www.san-bernardino.org

Market Nights

Seasonal

- Big Bear Lake, (Tues 8:30 am-1 pm). (760) 247-3769
- San Bernardino, Perris Hill Park, (Tues 6-9:30 pm) . (909) 844-7731
- Upland in Downtown, (Thurs 5-9 pm) (909) 949-4499

Year-round

- High Desert, Victor Valley College (Thurs 8 am-12 pm) (760) 247-3769
www.highdesertfarmersmarket.com
- Loma Linda on Barton Rd., (Sun 8 am-1 pm) (909) 799-2828
- Redlands on State St., (Thurs 6-9 pm) (909) 798-7629

QUICK FACTS

Airports

- Provides for the management, maintenance, and operation of six general aviation airports



Economic Development and Business Services

San Bernardino County offers one of the nation's most sophisticated transportation networks linking major markets across the nation and the Pacific Rim and providing a strong foundation for competitive businesses across an array of industries. Partner this foundation with the region's abundant workforce, educational opportunities, training programs, business incentives and overall quality of life, and you have a regional powerhouse able to weather temporary challenges and poised for structured expansion. San Bernardino resources are shovel-ready for the continued economic vitality of the region into the coming decades.



**ECONOMIC DEVELOPMENT
AND BUSINESS SERVICES**

Airports

County Airport System (909) 387-8810
www.sbcounty.gov/Airports

Apple Valley Baker Barstow-Daggett
Chino Needles Twentynine Palms

Ontario International Airport (909) 937-2700
www.lawa.org

San Bernardino International Airport (909) 382-4100
www.sbdairport.com

Southern California Logistics Airport, Victorville. . . (760) 243-1900
www.logisticsairport.com

Employment

CalJOBS — State
www.caljobs.ca.gov

California Employment Development Department
Jobs/training/UI claims
www.edd.ca.gov

Human Resources Job Line (909) 387-5611
www.sbcounty.gov/hr

JOBS
Workforce Development Department (800) 451-JOBS
Services to job seekers and businesses, job training assistance
www.csb-win.org

Employment Resource Centers

- Hesperia (760) 949-8526
- Rancho Cucamonga (909) 941-6500
- San Bernardino (909) 382-0440

Industry/Investments

Business Resources (909) 387-4700
www.OpportunityCA.us

Redevelopment Agency (909) 387-9804
www.sbcounty.gov/rda

Business Support

Architecture and Engineering (909) 387-5000
Solicit design services and bids for county construction projects
www.sbcounty.gov/ae

Clerk of the Board of Supervisors (909) 387-3841
Business licenses for entities operating in unincorporated areas of the county
www.sbcounty.gov/cob

Economic Development Agency. (909) 387-4700
www.OpportunityCA.us

Inland Empire Film Commission (951) 779-6700
Location research and film permits
www.filminlandempire.com

Purchasing (909) 387-2060
Manage purchase of goods and services: county mail, printing and surplus property
www.sbcounty.gov/purchasing

U.S. Small Business Administration (SBA). (800) 827-5722

Workforce Investment Assistance. (800) 451-5627
Employer services, employee recruitment, training, job fairs, labor market information
www.csb-win.org



Important Numbers At A Glance

EMERGENCY 911

- Non-emergency health & social service referrals . . . 211
- or (888) 435-7565
- Behavioral Health Call Center (888) 743-1478
- Child Abuse Hotline (800) 827-8724
- Domestic Violence (800) 799-7233
- Elder Abuse Hotline (877) 565-2020
- Illegal Dumping (800) 78-CRIME

Disaster Incident Information Line (909) 355-8800

Emergency Alert System (EAS) Radio Stations

- Big Bear Valley 93.3 FM KBHR
- High Desert 98.9 FM KHWY
- Morongo Basin, Joshua Tree 107.7 FM KCDZ
- Valley/High Desert 95.1 FM KFRG
- Victor Valley 102.3 FM KZXY
- CA Relay for TTY Users 7-1-1
- Mobile Device Access <http://m.sbcounty.gov>

211 Service provided by Inland Empire United Way

Space below for your own personal numbers and contact information.



Guía disponible en español en
WWW.SBCOUNTY.GOV
(888) 818-8988

