

ZCF100Ax/Cx

E350 series 2, 1-phase

User Manual



Date: 20.12.2011

File name: D000030875 E350 ZCF100Ax Cx 1-ph series 2 User Manual EN.docx

Revision history

Version	Date	Comments
a	19.01.2010	First edition
b	05.05.2010	New display list items, Combined sum integrated in channel configuration (section 1.6); SW-version presentation updated, Disconnecter tamper added, More detailed explanation of disconnecter icon, table of required measuring times updated, display status messages added, error and status code explanation extended, addressability added; restriction for SW-version ≤ M52 added "Meter display list" corrected (voltage, current, frequency, power items) Explanation efficiency registers updated Table Instantaneous Values updated Display status messages updated Meter tools added
c-f	06.09.2010	Minor formatting and text improvements
g	16.10.2010	Updating 1.8. Instantaneous values
h	09.12.2010	Section 5.2.5 Display sequence entirely updated (main and service display). Declaration of conformity replaced.
k	17.03.2011	Note about restrictions for meters with software versions M51 and M52 added in section 1.2 "Purpose of use". Section 1.3 "Advice" deleted (integrated into note in section 1.2).
m	01.06.2011	Section 2.3 "Safety Instructions" expanded with remark, that PE must not be switched with disconnecter and only "useful" tool have to be used; Section 5.2.7 "Error Display" modified; Remark about module data added in section 5.2.9; Content of section 5.2.12 "Error descriptions E350 Series 1 and Series 2" moved partly into functional description and partly to section 6.2 "Error Codes": Safety information about cleaning added in section 6.1 and modified in section 7.2.; Terminology changes: breaker → disconnecter, baud rate → transmission rate, baud → bps (bits per second); Minor formatting and text improvements.
n	20.12.2011	Section 1.6.3: Adapted to software version M54 (8 measurement channels) Section 5.2.9: New display item: Disconnecter tamper counter.

Nothing in this document shall be construed as a representation or guarantee in respect of the performance, quality or durability of the specified product. Landis+Gyr accepts no liability whatsoever in respect of the specified product under or in relation to this document. Subject to change without notice.

Table of contents

Revision history.....	2
Table of contents	3
Introduction	5
1 Description of Unit	6
1.1 General View	6
1.2 Purpose of Use	6
1.3 Field of Application.....	7
1.4 Characteristics	7
1.5 Type Designation	8
1.6 Measuring Principle	9
1.6.1 Overview	9
1.6.2 Signal Generation.....	9
1.6.3 Signal Processing.....	10
1.7 Instantaneous Values	11
1.8 Anti-Tampering and Tamper Prevention.....	11
1.9 Disconnecter	11
1.10 Software Tools	12
2 Safety.....	13
2.1 Safety Information	13
2.2 Responsibilities	13
2.3 Safety Instructions	14
2.4 Radio Interference	14
3 Mechanical Description	15
3.1 Housing.....	15
3.2 Face Plate.....	16
3.3 Connection Diagrams (examples).....	16
3.4 Dimensions	17
4 Installation/De-installation.....	19
4.1 Mounting the Meter	19
4.2 Connecting the Meter	20
4.3 Checking the Connections	21
4.4 Commissioning and Functional Check.....	22
4.5 Disconnecting the Meter	22
5 Operation.....	23
5.1 Control Elements	23
5.1.1 Display Button	23
5.1.2 Disconnecter Button	23
5.2 Liquid Crystal Display (LCD).....	24
5.2.1 Basic Layout.....	24
5.2.2 Explanation of LCD Elements.....	24
5.2.3 Displaying OBIS Codes	26
5.2.4 Display Definitions	26
5.2.5 Display Sequence	27
5.2.6 Display Check	30
5.2.7 Error Display	30
5.2.8 Text Messages on Display	30
5.2.9 Meter Display List – Available Items with OBIS Codes	31
5.2.10 Display Status Messages	33

5.2.11 Energy Efficiency Items in the Meter Display	33
5.3 Optical Test Output.....	34
5.4 Optical Interface	34
5.5 Data Readout	35
5.5.1 IEC 62056-21 Mode C	35
5.5.2 Readout Configuration	35
5.5.3 Readout Status Code (C.5.0).....	36
5.5.4 Data Readout Procedure via Optical Interface or AMR Module.....	37
5.5.5 Addressability of Meter.....	38
6 Service	39
6.1 Operating Faults	39
6.2 Error Codes	39
6.2.1 Structure of an Error Code	39
6.2.2 Error Code Descriptions.....	40
6.3 Repairing Meters	41
7 Maintenance	42
7.1 Meter Testing.....	42
7.1.1 Higher Register Resolution	42
7.1.2 Measuring Times.....	42
7.1.3 Optical Test Outputs	43
7.1.4 Connection to a Meter Testing Device	43
7.1.5 Creep Test	44
7.1.6 Starting Test.....	44
7.2 Cleaning	44
8 Decommissioning, Disposal	45
8.1 Decommissioning	45
8.2 Disposal.....	45
9 Annex: Declaration of Conformity.....	46

Introduction

Range of validity	<p>The present manual applies to the following meter versions:</p> <p>Single-phase Two-wire network</p> <ul style="list-style-type: none">• ZCF100AC and ZCF100AB for active energy (import and export)• ZCF100CC and ZCF100CB for active and reactive energy (import and export) <p>For a detailed explanation of the type designation see section 1.5.</p>
Purpose	<p>The user manual contains all information required for meter applications for the intended purpose. This includes:</p> <ul style="list-style-type: none">• Provision of knowledge concerning characteristics, construction and knowledge of meters• Information regarding possible dangers, their consequences and measures to prevent any danger• Details concerning the performance of all work throughout the service life of the meters (parameterisation, installation, commissioning, operation, maintenance, shutting down and disposal)
Target group	<p>The content of this user manual is intended for technically qualified personnel of energy supply companies, responsible for system planning, installation and commissioning, operation, maintenance, decommissioning and disposal of meters.</p>
Reference documents	<p>The technical data and functional description of the ZCF100 meters can be found in separate documents:</p> <ul style="list-style-type: none">• D000030926 "Technical Data ZCF100Ax/Cx series 2"• D000028645 "Functional Description ZxF100Ax/Cx series 2"

1 Description of Unit

1.1 General View



Fig. 1.1 General view of meter

1.2 Purpose of Use



Restrictions for meters with software versions M51 and M52:

The meters may not be used in networks with significant disturbances in the frequency range of 2 kHz to 150 kHz since the intended operating conditions of the meters according to the harmonised standards EN50470-1 and EN50470-3 assume no significant noise currents and voltages in this frequency range.

Such significant disturbances occur for instance in large photovoltaic systems (influence of the inverters with high emissions of extreme harmonics).

The ZCF100 meters record active and reactive energy consumption in all 1-phase 2-wire networks. They are directly installed in the supply line by the energy supply company and are read regularly for billing purposes.

The data is displayed on an LCD and is also available via optical interface and with an AMR Module via CS, PLC modem, GSM/GPRS modem, etc. When provided with transmission contacts, the meters can also be used as transmission contact meters for telemetry. The rates can be controlled internally or externally with control inputs (on the AMR Module).

With an AMR module, the meters can also be used to record counting pulses of other physical media (e.g. water or gas volumes) or to directly transmit values recorded by other measuring devices.

Any other application of these meters is regarded as abuse.

1.3 Field of Application

Basic series	The basic version provides energy registers for tariffication, a red test diode for active or reactive energy, an optical interface for meter reading and an interface for various communication forms. This interface is protected against fraud and is independent of the module suppliers. The exchangeable AMR Module is situated outside the calibration liability. The functionality of this meter is suitable for smaller consumers, e.g. for households.
Disconnecter (ZCF100xB only)	The function of the disconnecter is customer specific and is defined by the communication module. Possible uses: anti-tampering (e.g. disconnection in case of tampering with magnets), load limitation (fuse control), remote disconnect (e.g. in case of change of tenant), prepayment. The status of the disconnecter is displayed on the meter, but the disconnecter is controlled by the communication module. If you need detailed information on the functionality of your disconnecter, please consult the user manual of the communication module installed.
Extensions	<p>The basic series can be extended with various AMR Modules for additional functions and communications:</p> <ul style="list-style-type: none"> • Multirate import/export with external rate control • S0 pulse output • Communication via PLC, GSM/GPRS, or other media. <p>The meter functions which can be used in the system are defined by the module (e.g. a 2 rate module is not able to control 6 rates in the meter).</p> <p>Therefore, meter and module together define the functionality range which can be used.</p> <p>As the meter has a wide range of configuration possibilities, a specific behaviour can in some cases differ from the description below.</p>
Parameterisation	<p>The meters can be parameterised, i.e. specific parameters can be set with software, so that the meters can be supplied according to the specific wishes of the relevant utility.</p> <p>Retroactive modification of the parameters is not possible.</p> <p>The parameters stored in the meter are protected against unauthorised overwriting.</p> <p>Details about parameter settings can be found in the functional description.</p>

1.4 Characteristics

The meters have the following characteristics:

- Recording of active and reactive energy in all 4 quadrants (ZCF100Cx) or recording of active energy imported and exported (ZCF100Ax) with up to 6 rates
- Rate control performed via AMR module
- Data display on LCD
- Measuring elements in DFS technology (Direct Field Sensor) with excellent measuring characteristics, including flat load curve, high stability and good protection against interference.
- Active energy measurement accuracy: Classes 1 and 2 (IEC62053-21) and MID accuracy classes A and B (EN50470-3)

- Reactive energy measurement accuracy: Class 2 (IEC62053-23)
- Wide range measurement from starting current to maximum current
- Serial interface with optical input/output for automatic readout of data on the spot and for service functions
- AMR interface (connection to communication module) for meter reading and tariff control according to IEC 62056-21
- Storage of event information (e.g. power outages)
- Installation aids (e.g. phase voltages and direction of energy)
 - Presence of phase voltage (voltage value is displayed)
 - Visual output (creep indicator) on LCD
 - Display of energy direction
 - Power indication

1.5 Type Designation

	ZCF	1	10	A	B	e	F	s2
Network Type								
ZCF 1 phase 2 wire network								
Connection Type								
1 Direct connection								
Accuracy Class active energy								
10 Class 1 (IEC); B (MID)								
20 Class 2 (IEC); A (MID)								
Measured Quantities								
A Active energy								
C Active and reactive energy								
Additional Functionality								
C Meter with communication interface								
B Meter with communication interface and disconnector								
Rates								
e 1 rate								
d 2 rates								
t Multirate (up to 6 rates)								
Anti-tampering								
- No anti-tampering								
F Anti-tampering								
Version								
s2 Series 2								

The "e" for the 1-rate execution can be skipped in some executions.



The AMR Module is not part of this type designation, since it is a complete unit in itself. Users can change it without opening the calibration seal.

1.6 Measuring Principle

1.6.1 Overview

Inputs

The main meter inputs are:

- Phase connection (L1) and neutral for
 - energy measurement
 - power supply of the meter
 - PLC communication with communication modules
- Display button
- Disconnecter button (only if meter equipped with disconnecter)

Outputs

The main meter outputs (partly also inputs) are:

- LCD to display measured values and the corresponding OBIS code
- Optical test outputs (red, for active or for reactive energy)
- Optical interface for automatic data readout on site by means of a suitable HHT (Hand Held Terminal) (also input)
- Secured AMR Interface for automatic data readout through an AMR module, e.g. E35C module, with a PLC, GSM/GPRS, Ethernet or other medium (also input).

Power supply

The supply voltage for the meter electronics is taken from the Single-phase system. A voltage monitor guarantees a safety data storage in the event of a mains voltage failure and a correct start-up after the return of the voltage.

Memory

A non-volatile memory (EEPROM) contains the parameter set of the meter and secures the stored measurements against loss due to power failure.

1.6.2 Signal Generation

The measuring element, a DFS (Direct Field Sensor), registers the phase current with the magnetic field of the current loop and the phase voltage over a resistor divider. The analog/digital converters transform both signals into digital voltage and current data. This data is then multiplied by a digital multiplier to produce an energy proportional value which is then transferred into the energy registers (rate-dependent).

The microprocessor generates pulses for the test diode from the digital value according to the meter constant R.

1.6.3 Signal Processing

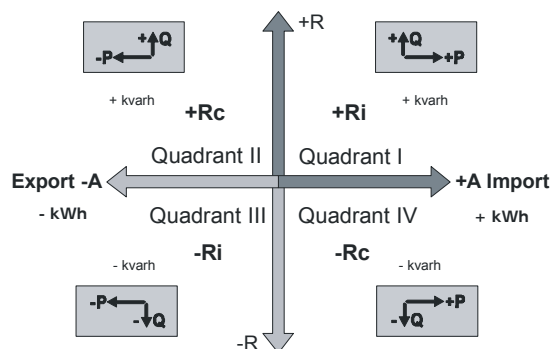
	The meter records active and reactive energy and can distinguish between energy import and export in up to 6 rates (depending on configuration).
Calibration	Calibration data is stored during the final testing of the meter.
Start detection	The microprocessor compares the measured power with the minimum starting power. The signals are only passed on if the minimum starting power is exceeded.
Measured quantities	<p>The following energy values can be measured and stored in the registers:</p> <ul style="list-style-type: none"> • Active energy A • Reactive energy R • Apparent energy S <p>+A and +R are the <i>imported</i> measured active and reactive energy, -A and -R the <i>exported</i> measured active and reactive energy.</p> <p>The combined values are the sum or the difference of the absolute values of +A and -A or +R and -R.</p> <p>The measurement of single quadrants can be configured too.</p> <p>Energy type: kWh, kvarh or kVAh</p> <p>Direction: Import, export, \pm reactive</p> <p>Instantaneous Values: Voltage, current, frequency, power factor</p>
Measurement channels	There are 8 independent measurement channels. One of the measured quantities can be assigned to each of this register.
Energy registers	<p>The measurement channels 1 to 6 have 6 rated registers and 1 total each, channel 7 and 8 have only 1 total register. 44 registers are therefore available in total.</p> <p>All registers work internally with 9 digits. The internal valence is Wh (Watt-Hours). They cannot be reset. At 999999999, a rollover to 0 takes place. The display and readout formats vary from the internal format.</p>
Rates	<p>The meter is designed for up to 6 rates. The assignment of the rate registers is done by means of parameterisation and is shown on the face plate.</p> <p>Rate control is performed by the external module.</p>
Rate control	With up to 2 rates, the rate switching is operated by the AMR Module directly or by control inputs. The rate switching for more than 2 rates can be operated only by the AMR module.
4-quadrant measurement	<p>The reactive energy ($\pm R_c$, $\pm R_i$) is allocated to the 4 quadrants as follows:</p> 

Fig. 1.2 4-quadrant measurement

Channel configuration To each of the 8 available channels a measured quantity can be assigned by parameterisation. The following table shows some of the most common measured quantities used:

Value	OBIS	Direction	Quadrant(s)	Unit
+A	1.8.0	Import	I + IV	kWh
–A	2.8.0	Export	II + III	kWh
+A + –A	15.8.0	Combined sum	I + II + III + IV	kWh
+R	3.8.0	Import	I + II	kvarh
+R	5.8.0	Import	I	kvarh
+R	6.8.0	Import	II	kvarh
–R	4.8.0	Export	III + IV	kvarh

1.7 Instantaneous Values

Instantaneous values are updated every second.

The following instantaneous values are available:

Measured value	Resolution	Start value	Max. value
Voltages L1, L2, L3	1 V	170 V	440 V
Currents I1, I2, I3	0.01 A	0.2 A	120 A
Frequency	0.1 Hz	47 Hz	53 Hz
Power Factor	0.1	-1	1
Power	0.01 kW	$I > 0.075 I_b$	I_{max}

If no value is available "----" can be shown (e.g. if in creep or value below start value).

1.8 Anti-Tampering and Tamper Prevention

E350 meters feature four optional anti-tampering functions:

- Detection of terminal cover opening
- Detection of DC magnetic field
- Sealable access lock to voltage connections
- Detection of Disconnector tampering (Disconnector meters only)

1.9 Disconnector

The ZxC100xB version of the E350 meter is equipped with a disconnector which is controlled via the communication module. Various functions can be implemented:

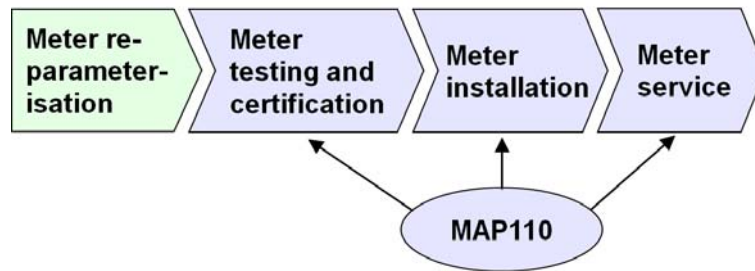
- disconnection if credit has been used up
- change to minimum power mode if credit has been used up
- disconnection if max. power has been exceeded over a specified time
- others

The disconnecter can either be controlled via the AMR module or manually with the disconnecter button on the meter's terminal cover (if parameterised accordingly, see also section 5.1.2 "Disconnecter Button").

1.10 Software Tools

Landis+Gyr meters are provided with optimum support by suitable software tools during all phases of their life cycle:

- The Landis+Gyr MAP110 service tool for customers is used for the test and installation of meters and for servicing work on the spot.



For the list of functions of MAP110 please see MAP-documentation and functional description of the E350.

2 Safety

This section describes the safety information used in this manual, outlines the responsibilities and lists the safety instructions to be observed.

2.1 Safety Information

Attention is drawn to dangers and their level (severity and probability) in this user manual in the following way:

**Definition of Danger**

For a possibly dangerous situation, which could result in severe physical injury or fatality.

**Definition of Warning**

For a possibly dangerous situation, which could result in minor physical injury or material damage.

**Definition of Note**

For general details and other useful information to simplify work.

All safety information also describes the type and source of the danger, its possible consequences and measures to counteract the danger.

2.2 Responsibilities

The owner of the meters is responsible that all persons engaged on work with meters:

1. Are competent and qualified in accordance with national regulations (see ISSA "Guideline for Assessing the Competence of Electrically Skilled Persons").
2. Have read and understood the relevant sections of the user manual.
3. Strictly observe the safety instructions (according to section 2.3) and the operating information in the individual sections.

In particular, the owner of the meters bears responsibility

- for the protection of persons,
- prevention of material damage
- and the training of personnel.

Landis+Gyr AG provides training courses for this purpose on specific equipment; please contact the relevant agent if interested.

2.3 Safety Instructions

The following safety instructions must be observed at all times:

- The meter connections must not be under voltage during installation or when opening. Contact with live parts is dangerous to life. The relevant main fuse should therefore be removed and kept in a safe place until the work is completed, so that other persons cannot replace it unnoticed.
- Local safety regulations must be observed.
- Protection earth connection must not be switched with the disconnector.
- Only "useful" tools have to be used. This means a screw driver has to have the correct size for the screws and the metallic part of a screw driver has to be insulated.
- The meters must be held securely during installation. They can cause injuries if dropped.
- Meters which have fallen, must not be installed, even if no damage is apparent, but must be returned for testing to the service and repair department responsible (or the manufacturer). Internal damage can result in functional disorders or short-circuits.
- The meters must on no account be cleaned with running water or with compressed air devices. Water penetrating can cause short-circuits.

2.4 Radio Interference



Possible radio interference in residential environments

This meter is normally a class B product. In combination with some communication modules it can become a Class A product. In a domestic environment, this may then cause radio interference, in which case the user may be required to take adequate measures.

3 Mechanical Description

3.1 Housing

The internal construction of the meter will not be described here, as the meter is sealed after calibration and verification.

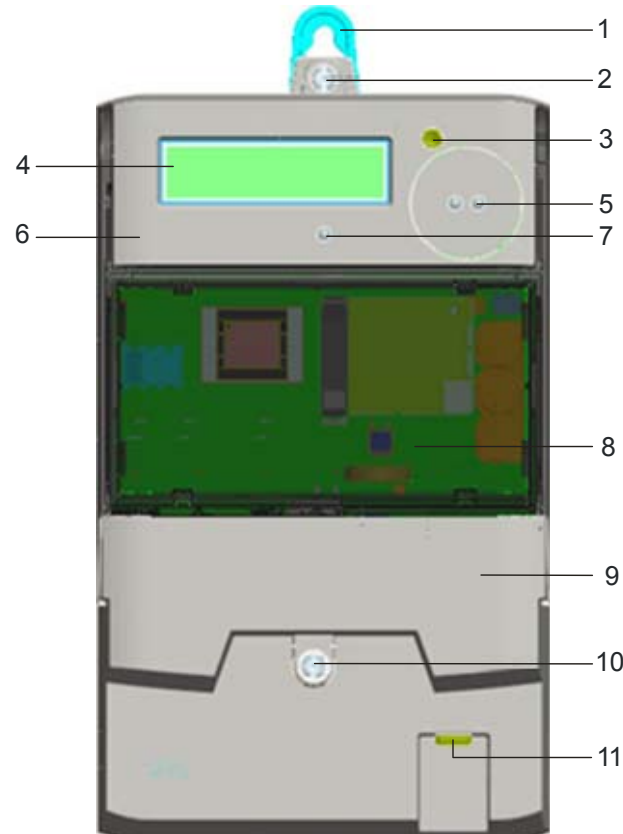


Fig. 3.1 Front view of meter

- 1 Suspension hanger in upper position
- 2 Suspension hanger in lower position
- 3 Display button
- 4 LCD
- 5 Optical interface
- 6 Front cover (face plate with laser marking, for details see Fig. 3.2)
- 7 Test diode (red)
- 8 AMR Module compartment
- 9 Terminal block cover
- 10 Screw with sealing point (manufacturer or utility seal)
- 11 Disconnect button

A terminal block with all connecting terminals is located under the terminal cover. On the terminal cover, a sealing point for an utility seal prevents unauthorised access to the phase connections and therefore help to avoid unrecorded power consumption.

3.2 Face Plate

The face plate (laser marking on front cover) shows customer specific meter information.

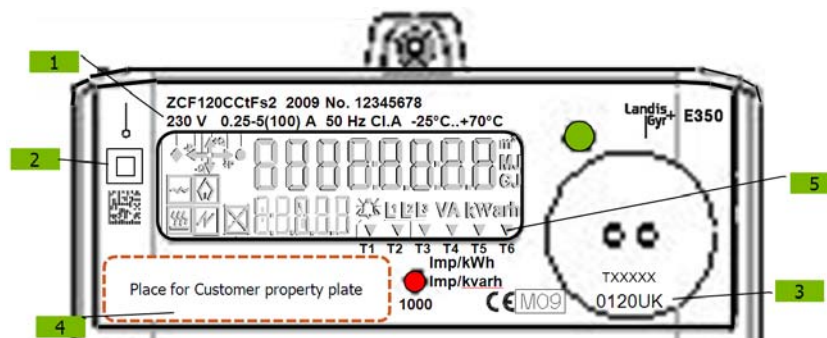


Fig. 3.2 Basic layout of face plate

- 1 Meter data
- 2 Double protection insulation symbol
- 3 Approval symbol, CE conformity symbol
- 4 Customer No. / Barcode / Ownership designation
- 5 Active rate

The display button and the display are fully described in section 5.

3.3 Connection Diagrams (examples)



Where to find relevant diagrams

The diagrams relevant for the installation are shown on the terminal cover normally.

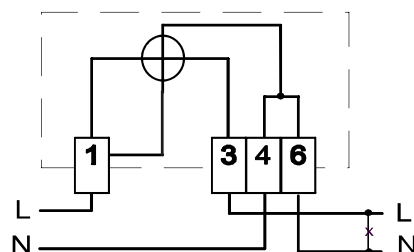


Fig. 3.3 Connection diagram ZCF100AC

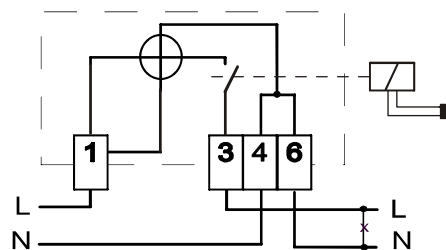


Fig. 3.4 Connection diagram ZCF100AB with disconnecter

3.4 Dimensions

The meter is only available with an extended terminal cover (see Fig. 3.5)

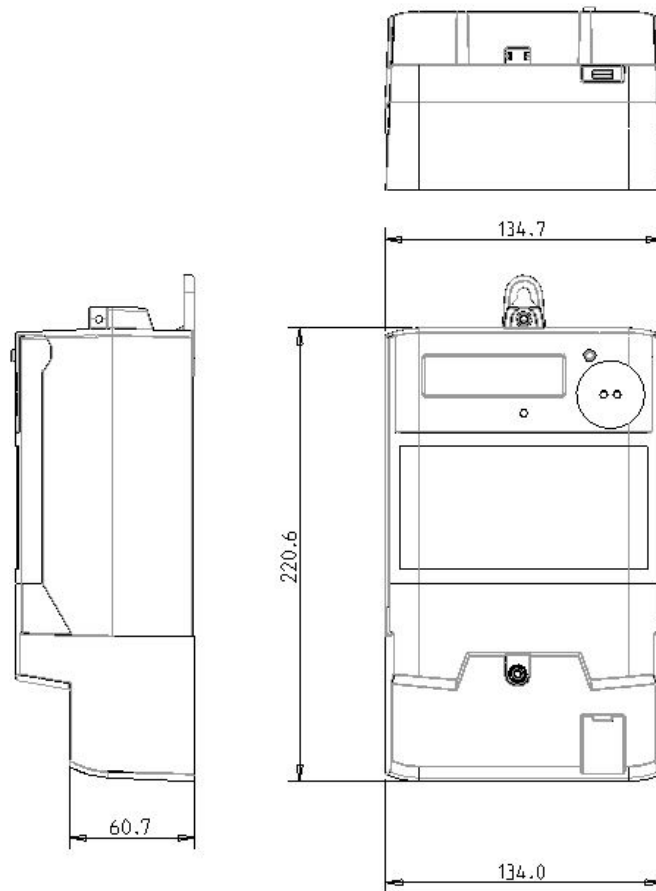


Fig. 3.5 Meter dimensions

The extended terminal cover offers increased safety since the phase and neutral connecting wires are protected underneath.

The suspension triangle complies with DIN standards.

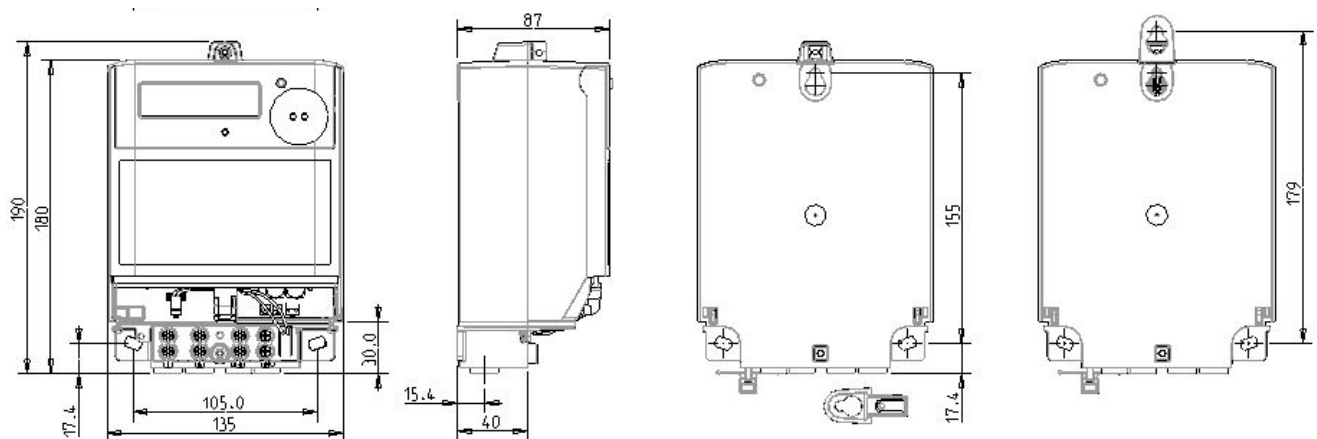


Fig. 3.6 Meter without terminal block cover

Terminals are available with an opening diameter of 8.5 mm and 9.5 mm.

Terminals with opening diameter of 8.5 mm and 9.5 mm have the same position on the terminal block.

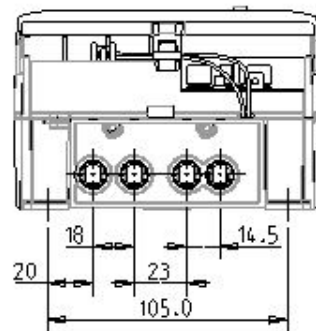


Fig. 3.7 Terminal layout and dimensions

4 Installation/De-installation

4.1 Mounting the Meter

The meter should be mounted as follows on the meter board or similar device provided for this purpose (see also section 3.4 "Dimensions"):

1. Find the correct position for the meter. Ensure there are no wires underneath the holes to be drilled.
2. Define the desired form of fixing (open or covered meter mounting).
3. Ensure with a phase tester or universal measuring instrument that the connecting wires are not live.

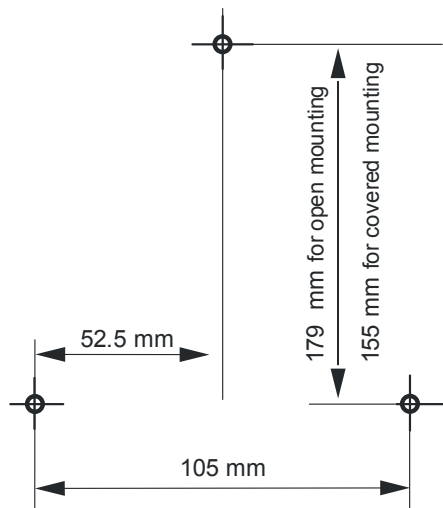


Fig. 4.1 Drilling plan

4. Mark the three fixing points (suspension triangle as shown in the drilling plan Fig. 4.1) on the mounting surface provided.
5. Drill the three holes.
6. Unscrew the meter terminal cover.
7. For open meter mounting insert the meter suspension eyelet – which is supplied in the terminal cover – into the corresponding opening at the rear side of the meter until the suspension eyelet engages (see Fig. 4.2).

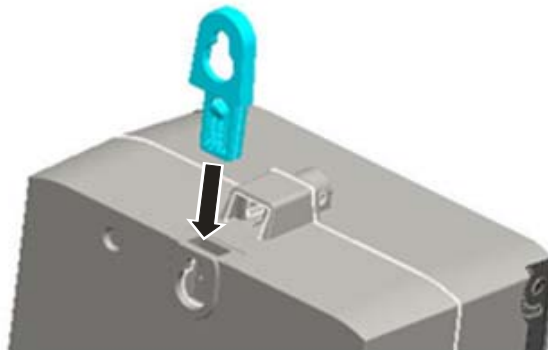


Fig. 4.2 Meter suspension eyelet

8. Fit the meter with 3 fixing screws on the mounting surface provided.

4.2 Connecting the Meter



Remove main fuse before connecting

The connecting wires at the place of installation must not be live when fitting the meter. Touching live parts is dangerous to life. Remove the corresponding main fuse and keep it in a safe place until work is completed, so that it cannot be replaced by anyone unnoticed.



Provide overcurrent protection

For ZCF100xB meters: As the disconnecter is not equipped with a thermal and/or short circuit protection device, it needs to be protected with an external fuse or overload switch.

For ZCF100xC meters: As the meter has no internal overcurrent protection and no method of disconnection from the mains, this must be provided by the end installation.

Connecting the phase and neutral connection line

1. Shorten the phase and neutral connecting wire to the required length and then strip them.
2. Insert the phase and neutral connecting wire into the corresponding terminals (the terminals are numbered as shown in the connection diagram) and tighten the terminal screws firmly (max. torque 3 Nm).

It is recommended to identify the beginning and end of the relevant conductors with a suitable test unit (e.g. buzzer) to ensure that the right consumer is connected to the meter output.

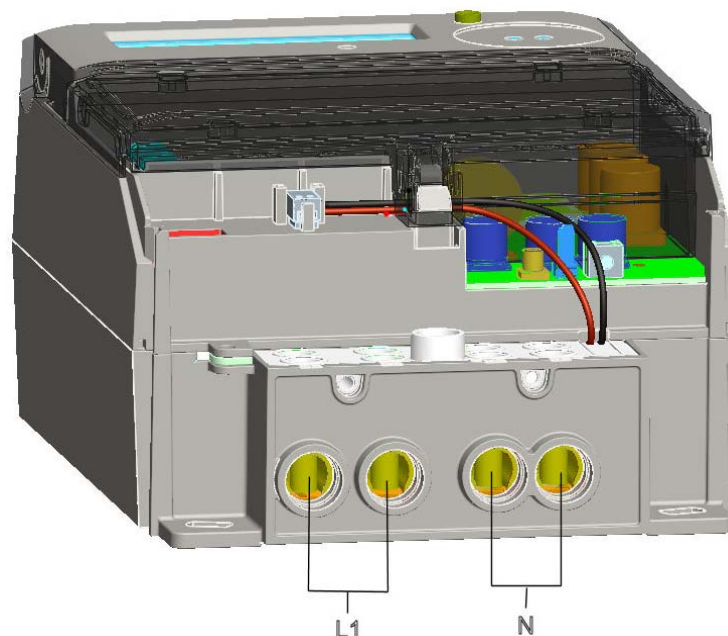


Fig. 4.3 Meter connections

With small conductor cross-sections (e.g. 4 mm²) the connecting line must be placed in the indentation (stamping) of the current loop, so that it cannot shift sideways when tightening the terminal screws. Ensure that the connecting line remains in the indentation when tightening.

Indentation (stamping) for smaller connection lines

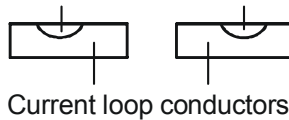


Fig. 4.4 Cross-section through current loop conductors



Insufficiently tightened screws

Insufficiently tightened screws of the connections can lead to increased power losses at the terminals and therefore to undesirable heating. A contact resistance of 1 mΩ causes a power loss of 6.4 W at 80 A!



Insulate to correct length

Touching live parts is dangerous to life. Shorten the stripped part of the connecting wire if bare wire is visible above the terminal edge.



Do not withdraw connecting wires with closed terminals

Never withdraw connecting wires with the terminal closed, since this could damage the terminal.

4.3 Checking the Connections

Before putting the meter into operation check (and correct, if necessary) the following points to ensure a correct connection:

1. Has the correct meter (identification number) been installed at the measuring point of the relevant consumer?
2. Is the calibration connection closed (sealable sliding piece inserted and sealed)?
3. Are the screws for the phase and neutral connection tightened well?
4. Are all inputs and outputs connected correctly? The house connection or consumer fuse wires must be present at the input (terminals 1, 4), those of the meter to the consumer at the output (terminals 3, 6).

Mount the terminal cover after a successful check of the connections, tighten its screws and seal it.

4.4 Commissioning and Functional Check



Do not touch live parts

The main fuse must be inserted to put the meter into operation and for the functional check. Without terminal cover there is a danger of contact with the terminals. Touching live parts is a danger to life.

The installed meter should be put into service and checked as follows:

1. Insert the corresponding main fuse. The meter is on.
2. Check whether the display appears correctly (no error message) and with no load connected that the anti-creep indicators are constantly on.
3. Connect a load and check whether the anti-creep indicator for active energy disappears.
4. Check whether the disconnecter (if present) works according to the functionality specified for your application.

4.5 Disconnecting the Meter



Remove main fuse before disconnecting

The connecting wires at the place of installation must not be live when removing the meter. Touching live parts is dangerous to life. The corresponding main fuse should be removed and kept in a safe place until work is completed, so that it cannot be replaced by anyone unnoticed.



For ZCF100xB: **Do not use the disconnecter as a main switch for disconnecting purposes!** The meter remains connected to the mains!

Remove the meter from the network as follows:

1. Switch off the voltage. The display goes off.
2. Remove the seal at the terminal cover.
3. Release and remove the terminal cover.
4. Ensure with a phase checker that the connecting wire has no voltage. If there is voltage, remove the main fuse.
5. Remove the connecting wires of the AMR Module, if available.
6. Loosen the terminal screws of the phase and neutral connecting wire with a suitable screwdriver and withdraw the wires from the terminals.
7. Fit a substitute meter as described in section 4.2 "Connecting the Meter" and the following sections, if necessary.

5 Operation

5.1 Control Elements

E350 meters have a display button on the front cover and a disconnect button on the terminal cover, if the meter is equipped with a disconnect.

Data acquisition is either made by reading the display or automatic readout via the optical interface. For this purpose, the optical head is placed on the marked position on the front cover of the meter and readout is performed with a handheld terminal (refer to section 5.5 "Data Readout").

5.1.1 Display Button

The display button is located on the front cover on the right of the LCD.

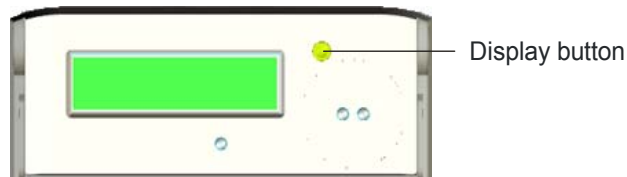


Fig. 5.1 Display button

By pressing the display button, the display mode or the displayed value can be changed (see section 5.2.4 "Display Definitions").

5.1.2 Disconnect Button

The disconnect button (option) is located on the terminal cover.

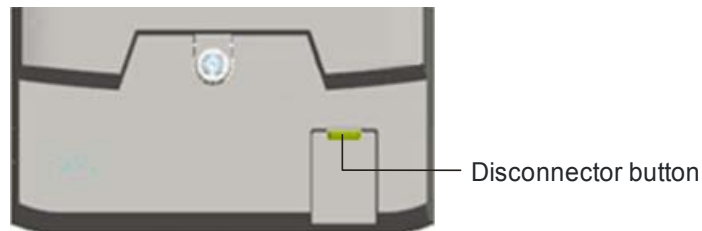


Fig. 5.2 Disconnect button

If the disconnect button is pressed, the disconnecter opens and/or closes depending on parameterisation, i.e. a closed disconnecter can always be opened with the disconnecter button whereas closing an open disconnecter needs an additional permission from the meter.

5.2 Liquid Crystal Display (LCD)

5.2.1 Basic Layout

The basic layout shows all indication possibilities of the LCD.



Fig. 5.3 Basic layout of LCD

- 1 Reactive anti-creep indication
- 2 Active energy direction indication (+P: import, -P: export)
- 3 Reactive energy direction indication (+Q: import, -Q: export)
- 4 Active anti-creep indication
- 5 Value field (eight 7 segment digits)
- 6 Unit indications
- 7 6 arrow symbols for rate indication
- 8 Phase voltage indication
- 9 Tamper alert indicator
- 10 Index field (five digits with 7, 8 or 11 segments)
- 11 Disconnect icon
- 12 Media icons (water, heating, gas, electricity)

5.2.2 Explanation of LCD Elements

For the purpose of this document, flashing LCD segments will be shown in grey colour.

Value field

8888.88.88

Up to 8-digit values can be displayed in the value field. The 7 segment digits are able to display numeric data or limited alpha numeric text. Additional decimal points and colons enhance the 7 segment digits. This allows the representation of values with decimal places as well as date and time formats.

Unit indications

VA kWArh m³ MJ GJ

With the unit indications below and on the right side of the value field the following units can be displayed: V, A, kWh, kVah, kVarh, kW, kVa, kVar, m³, MJ, GJ. The unit displayed indicates which register is being viewed.

Active energy direction indication

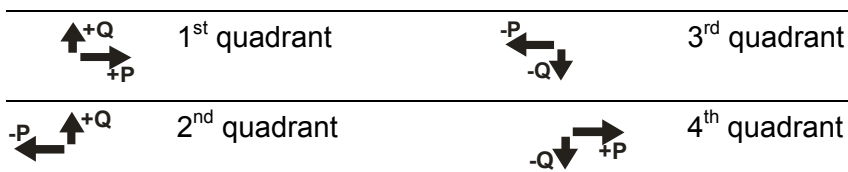
	positive active energy direction (imported from power company)
	negative active energy direction (exported to power company)

Reactive energy direction indication

	positive reactive energy direction
	negative reactive energy direction

Quadrant

Indicates in which quadrant the present measurement is made:

**Reactive anti-creep indication**

The reactive anti-creep indication (a diamond) shows that the kvarh registers have entered anti-creep mode. No energy is flowing through the meter (no reactive energy direction indicator displayed).

Active anti-creep indication

The active anti-creep indication (a circle) shows that the kWh registers have entered anti-creep mode. No energy is flowing through the meter (no active energy direction indicator displayed).

Media icons

The media icons represent the medium measured (from left to right water, gas, heating and electricity). The media icon displayed corresponds to group A of the OBIS identification code (see also section 5.2.3).

The electricity media icon is either **on** if data from the internal meter is displayed or is **flashing** if data from an external meter is displayed (automatically controlled). The water, gas and heating media icons are also flashing if data from an external source is displayed.

Disconnect icon

This icon indicates that the respective media (represented by the displayed media icon) is disconnected by the disconnecter.

Icon ON: Disconnecter open (circuit interrupted)
 Icon OFF: Disconnecter closed (circuit closed, current can flow)
 Icon flashing: Disconnecter open, can be closed locally (Push Button)

This operation is the preset. The operation will be controlled by the installed module. Please refer to the manual of the module for valid operation mode. Alternatively to this indication a display of the disconnecter status can be in the installed module and the display on the LCD can be disabled.

Tamper alert indicator

This icon is switched on when the meter has detected the tamper event parameterised (either terminal cover or strong magnetic field).

Phase voltage indication

The phase voltage indication is switched on if the phase voltage is present.

Arrow symbols

The 6 arrow symbols indicate the active rate as marked on the face plate. It can be parameterised whether the arrow symbol for the active rate is on or flashing.

Index field

Up to 5-digit indices are displayed in this field which define the value in the value field with groups **C**, **D** and **E** of the OBIS identification code (see following section).

Examples:

1.8.0 indicates that the status (group D = 8) of total (group E = 0) active energy import (group C = 1) is displayed in the value field.

0.9.1 indicates that the local time is displayed in the value field.

5.2.3 Displaying OBIS Codes

For OBIS (Object Identification System) the structure **A-B:C.D.E.F** applies. The individual groups have the following significance:

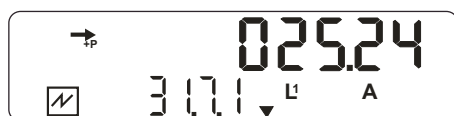
- A** Defines the medium, e.g. electricity, gas, heat or water-related data.
Group A is represented with the media icons.



- B** Group B is not shown on E350 meters (only channel 1 available).
- C** Defines the measured quantity, the abstract or physical data items related to the information source concerned, e.g. active power, reactive power, apparent power, power factor, current or voltage.
- D** Defines types, or the result of the processing of physical quantities according to various algorithms. The algorithms can deliver energy and demand quantities as well as other physical quantities.
- E** Defines the rates in use. For abstract data or for measurement results without rates, this value group can be used for further classification.
- F** Group F is not shown on E350 meters.

Representation example

OBIS identification code **1-1:31.7.1.0** (line current in phase L1) is represented as follows on the display:



Group A of the OBIS identification code is represented by the media icon for electricity, groups B and F are not displayed and groups C to E are represented as index value 31.7.1.

The line current in phase L1 is indicated with 25.24 A.

The active energy direction arrow +P, the phase voltage indication L1 and the arrow symbol of the current rate are also displayed.

5.2.4 Display Definitions

The meter can show various displays. Here are some examples.

**Note**

The number of digits and decimal places displayed can be parameterised (also whether leading zeros are to be displayed). The following examples show different settings.

Total active energy import**Mains frequency****Total reactive energy import****Status code****Active energy import rate 1****Phase fail counter****Active energy export rate 2****Manufacturer identification number****Line voltage****Water consumption****Total active energy****Heat consumption****Total power factor****Gas consumption**

5.2.5 Display Sequence

The previous section showed in detail the possible displays. The display sequences shown on any specific customer's product are set through parameterisation at the factory.

There are two display sequences:

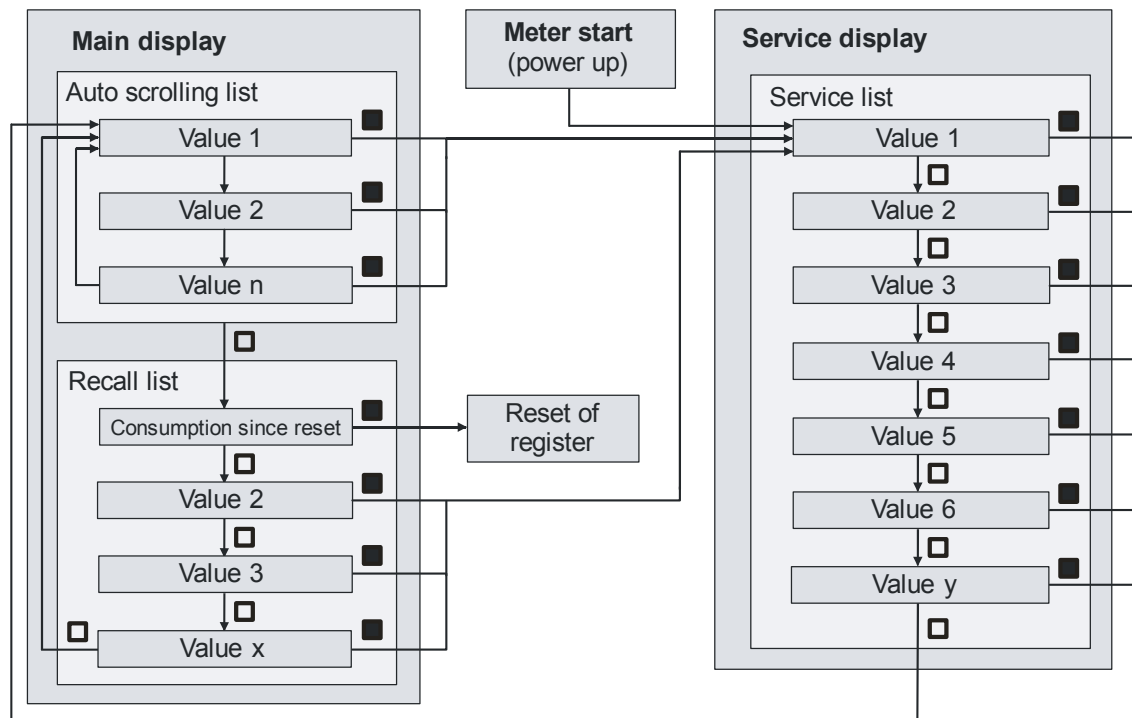
- **Main display** (with an auto scrolling list and a recall list)
- **Service display** (with the service list)

The main display can include up to 31 displays, the service display up to 63 displays (defined by parameterisation).

The parameters which have an influence on the display sequence must be defined in the configuration process.

These items are:

- Leading zeros can be enabled/disabled for registers
- Energy register displays can be defined with an integer part of 6 digits (in exceptional cases 5) and with 0, 1, 2 or 3 decimal places. Max 6 significant digits (left of the decimal point) are allowed. Max. 8 digits including decimal places are available.
- Active rate indication can be enabled or disabled
- Flashing decimal point to indicate that the meter is in the certification display sequence



□ = short press of display button (< 5 s) ■ = long press of display button (> 5 s)

Fig. 5.4 Overview display sequences

Power up

During power up the type and software version of the meter is displayed for 10 seconds.



The display contains:

- In the main field "100" and the characters to define whether it is an active or a combi meter respectively a meter with or without disconnector, e.g. 100 Ab, 100 AC, 100 bC, 100 bb.
- In the index field the software version, e.g. **21** for version M21 or with alternative format: **2300** for M23.0.0.

Then the service display appears for the parameterised start-up time. If the start-up time for the service display is zero, the display starts directly with the main display.

Service display

The service display allows tests to be carried out by allowing registers to be displayed at higher resolutions. It provides information to assist the installer during installation or during subsequent testing of the network status. The service display may also include data, which can give information about the state of the meter during work in the field or in the test facility.

The service display is accessed when the meter is first powered up and on a **long press** (more than 5 seconds) of the display button in the main display. Exception: If the display button is pressed long while the consumption since last reset is displayed, the register is reset instead.

The items in the service display (maximum 63) can be scrolled through with **short presses** (less than 5 seconds) of the display button. When the end of the sequence is reached, auto scrolling of the main display will start.

Main display

The number of displays (max. 31), their sequence, whether they are contained in the auto scrolling list or only in the recall list (all displays of the auto scrolling list appear also in the first part of the recall list) and the display duration for the items (between 1 and 15 seconds) can be parameterised. Up to 12 displays, under the control of the AMR module, can be included in the main display.

The **auto scrolling list** of the main display is displayed

- if the end of the service display or the recall list of the main display is reached,
- if the display button isn't pressed for a period, configurable at manufacturing, of between 5 and 60 minutes (default 30 minutes), or
- after a long press of the display button (more than 5 seconds) in the service display.

It shows the end-user the main consumption data, e.g. the status of rated registers and total registers, current instantaneous demand etc. After the last display in the auto scrolling list it starts again. If the number of displays in the auto scrolling list is set to 1, auto scrolling is switched off and the first display of the recall list is displayed continuously.

The **recall list** of the main display is accessed by a **short press** (less than 5 seconds) of the display button while the auto scrolling list is running.

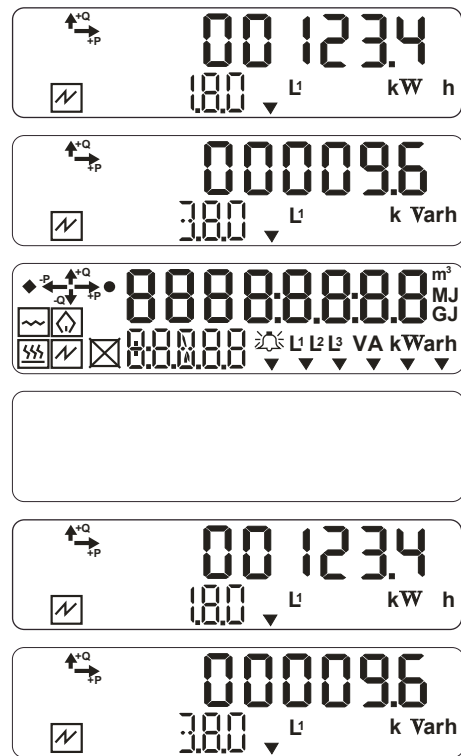
A **short press** moves the display to the next item in the recall list. Repeated short presses will scroll through to the end of the recall list, then "End" is displayed after which auto scrolling is resumed.

A **long press** (more than 5 seconds) in the main display will access the service display. Exception: If the display button is pressed long while the consumption since last reset is displayed, the register is reset instead.

Example

The following table shows a simple meter normal display sequence configuration. The value of the total active energy import register is assumed to be 000123456 Wh and that of the total reactive energy import register 000009876 Varh. The registers are set to show 6 digits with 1 decimal place. The leading zeros are not suppressed.

Displayed value
Total active energy import
Total reactive energy import
Display check (all segments on)
Empty display (all segments off)

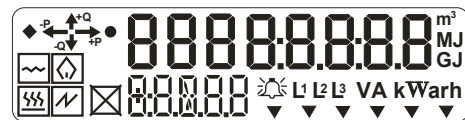


etc.

The meter first shows the total active energy import register as 00123.4 kWh, followed by the reactive energy import register as 00009.6 kvarh and all segments on and then all off. The display duration for each display can be set between 1 and 10 seconds, but not individually. This sequence is repeated until the meter is switched off or the recall list (short press of the display button) or the service display (long press of the display button) is entered.

5.2.6 Display Check

During the display check all segments of the display are on. Especially the index and value fields should be checked for missing segments.



5.2.7 Error Display

An error display can be included in a display sequence, but it also automatically turns up in case of a malfunction. The error code is based on a 32 bit value in which each bit, if set, indicates a particular error condition. In the following error display the error code "00002002" is composed of the two errors "00000002" and "00002000".



The error codes are described in section 6.2.2 "Error Code Descriptions".

5.2.8 Text Messages on Display

It is possible for the module to show information on the meter display. Possible items include Ids of connected devices, time. For this, the value and the index fields can be used. This information is available in the module documentation.

The following characters can be used in text messages:

Character	LCD	Character	LCD	Character	LCD
<SPACE>		A	<i>R</i>	N	<i>n</i>
– (minus)	-	B	<i>b</i>	O	<i>o</i>
_ (underscore)	-	C	<i>C</i>	P	<i>P</i>
0	<i>0</i>	D	<i>d</i>	Q	<i>q</i>
1	<i>1</i>	E	<i>E</i>	R	<i>r</i>
2	<i>2</i>	F	<i>F</i>	S	<i>S</i>
3	<i>3</i>	G	<i>G</i>	T	<i>t</i>
4	<i>4</i>	H	<i>h</i>	U	<i>u</i>
5	<i>5</i>	I	<i>i</i>	V	<i>U</i>
6	<i>6</i>	J	<i>J</i>	W	<i>U</i>
7	<i>7</i>	K	-	X	-
8	<i>8</i>	L	<i>L</i>	Y	<i>y</i>
9	<i>9</i>	M	<i>n</i>	Z	<i>2</i>



Display variations

Some characters might be displayed differently, depending on module and meter version.

Characters which can't be represented with the 7-segment-display will be replaced by an underscore (there are also meter versions with a slightly different character set. E.g. the characters that cannot be shown are represented with a lower "o").

5.2.9 Meter Display List – Available Items with OBIS Codes

OBIS code	Item
F.F	Error code (always first in the list)
C.1.0	Meter identification (8 character string)
0.0	Customer identification (16 char. string) (Readout)
0.0.1	Customer identification (characters 1-8) (Display)
0.0.2	Customer identification (characters 9-16)) (Display)
C.1.1	Manufacture identification (8 char. string)
C.90.1	IEC-address of meter
1.8.0	Total active energy import
1.8.X	Active energy import rate X (X = 1...6)
2.8.0	Total active energy export
2.8.X	Active energy export rate X (X = 1...6)

OBIS code	Item
3.8.0	Total reactive energy import
3.8.X	Reactive energy import rate X (X = 1...6)
4.8.0	Total reactive energy export
4.8.X	Reactive energy export rate X (X = 1...6)
32.7.0	Line voltage L1
31.7.1	Line current L1
36.7.0	Active energy L1
16.7.0	Total active energy
33.7	Power factor L1
151.7.0	Reactive energy L1
131.7.0	Total reactive energy
14.7.0	Mains frequency
82.8.2	DC field detection counter
82.8.1	Terminal cover removal counter
82.8.3	Disconnecter tamper counter
C.5.0	Status code (see section 5.5.3)
C.7.0	Power off counter
C.7.1	Phase fail counter L1
0.2.0	Software version
0.2.1	Parameter identification
C.2.0	Number of parameterisations
0.2.1	Scheme ID
All off	Blank display
All on	All segments on
5.8.0	Reactive Energy Q1
6.8.0	Reactive Energy Q2
7.8.0	Reactive Energy Q3
8.8.0	Reactive Energy Q4
9.8.0	Apparent Energy {+kVAh} (Q1+Q4)
10.8.0	Apparent Energy {-kVAh} (Q2+Q3)
15.8.0	Active Energy - Absolute Value [+A + -A] {+kWh}
16.8.0	Active Energy - Absolute Value [+A + -A] {+/-kWh}
130.8.0	Reactive Energy - Absolute Value [+R + -R] {+kVArh}
131.8.0	Reactive Energy - Absolute Value [+R + -R] {+/-kVArh}
132.8.0	Reactive Energy - Import [+R(Q1+Q4)] {kVArh(+)}
133.8.0	Reactive Energy - Export [-R(Q2+Q3)] {kVArh(-)}
36.7	Phase R kW
151.7	Phase R kVar
	4 Energy efficiency items (see section 5.2.11)
	Module data 1 - 12 (value and OBIS code will be sent by module)
	End of list

5.2.10 Display Status Messages

Depending from configuration the following messages can appear on the end of a display list:

Messages	Meaning
FF 00000000	Error detected (if error value FF > 0)
rEd	Reverse rotating field detected
td	Terminal cover removal detected
mFd	Strong magnet field tamper detected
btd	Disconnecter (breaker) tamper detected
VoltAGE Low	Voltage is lower than the configured threshold (standard value: 170 V)



Fig. 5.5 Sample: Message for magnet tamper detected

5.2.11 Energy Efficiency Items in the Meter Display

If configured appropriately the display can list 4 new (Software ≥ M52) items intended to allow the consumer to easily monitor energy flow:

Item	Display	Content	Remarks
Import Energy Meter	St1	Import Energy 1.8.0	Resettable
Export Energy Meter	St2	Export Energy 2.8.0	Resettable
24 Hour Energy Consumption	24 h	Import Energy 1.8.0 over last 24 h	Refresh every 5 min
1 Week Energy Consumption	1 w	Import Energy 1.8.0 over last week	Refresh every 1 hour

The resolution of these 4 displays is 1 W.

Import and Export Energy meter display:

These registers (St1 and St2) are counting energy permanently. The Import and the Export energy Meter values can be reset by applying a long button press whilst the register value is being displayed on the meter (working like a trip recorder in a car).

During power outage registers St1 and St2 are reset. These both registers start after recover of power with the values of the energy registers of import or export energy (St1: import, value register 1.8.0; St2: export, value Register 2.8.0)

24 hour and 1 week consumption registers:

These registers show the energy consumed during the last period of 1 week (24 h register: period of 1 day). The meter counts the time duration continuously but doesn't synchronise with a calendar clock.

Time during power outages is not included in the elapsed time measurements of the registers "24 Hour Energy Consumption" and "1 Week Energy Consumption".

E.g. for the 24 h register assume registration for 5 hours followed by 1 hour power outage. Then completion of the 24 h registration will complete 19 hours following the end of the outage ($5 \text{ h} + 19 \text{ h} = 24 \text{ h}$)

After resumption of power following an outage, the registers "24 Hour Energy Consumption" and "1 Week Energy Consumption" will display "0" until the first refresh occurs (i.e. after 5 min and 1 hour respectively).

5.3 Optical Test Output

The test diode is used for meter testing. It transmits visible red pulses equivalent to the currently measured value. The switching between active and reactive mode at combimeters is done by command. The number of pulses per time unit depends on the meter constant (as stated on the face plate). When registering energy the test diode will flash for example at a rate of 1 pulse per Wh or VARh of energy recorded (with a meter constant of 1000 pulses per kWh/kvarh). The pulse width is 10 ms.



Fig. 5.6 Optical test output and optical interface

5.4 Optical Interface

All meters have an optical communications port (see Fig. 5.6). If the AMR module supports this function, both meter and module can be accessed via optical port. In this case, the AMR module has to be addressed.

The optical interface allows reading the meter's registers and identity in the field using a suitable device (Hand Held Terminal or PDA). The readout list is in full accordance with the provisions of IEC62056-21. The optical port is normally closed, a wake up string is sent to the meter, which activates the readout list.

With this communication channel, software can be downloaded to the module. Additionally, an external user can send commands to the module and upload data from the module via the opto port. All communication is half-duplex, i.e. data can either be transmitted or received at any point in time.

If the module communicates with the opto port, the meter will not accept sign-ons from either the opto port or the AMR port. If the module wants to read the meter, it must terminate the opto port ↔ module communication.

The module communicates normally via dlms.

Access to module over optical port

Access to module over optical port of meter is possible with

`/?xxxxxxxx7214!`

where xxxxxxxx is the meter number.

Opening 7214 → 7 bit, even parity, 1 stop bit, 4800 bps

This can be used to read out the module over the optical meter interface or to set the TOU-table of the module.

5.5 Data Readout

The power supplier can read the meter data, particularly the energy consumption, locally in two ways:

- Reading the meter's LCD. Only the data shown in the display list can be recorded.
- Automatic data readout via the optical interface with the aid of an AMR Module (e.g. hand held terminal T3000). Further data are then accessible depending on the parameterisation (total registers etc.). Log corresponds to the provisions of IEC62056-21, a communication standard for meters.

5.5.1 IEC 62056-21 Mode C

The meter supports IEC 62056-21 mode C-a. This enables the reading of data from the meter in the data readout mode. After an initial sign-on sequence, the meter transmits its data to the HHT. This consists of a number of items which are set in the configuration. Each item is sent in ASCII with OBIS (IEC 62056-61) identifiers. Each identifier is on a separate line (separated by carriage return and line feed characters $\text{C}_{\text{R}}^{\text{L}}\text{F}$) and follows the format *Identifier (value*units)*.

The maximum transmission rate is 9600 bps. The response message identifies the software version and the IEC 62056-21 transmission rate mode used.

The meter provides also a manufacturer specific mode C-C, which delivers only a part of the read out list (start and end item are configurable during production). This can be used for fast read out for frequently required values.

5.5.2 Readout Configuration

The readout items, their order in the list, along with the number of decimal places for the registers, are specified in the configuration. The register sizes can have up to 6 integer digits and up to 3 decimal places. This is independent on the display configuration.

The readout list (similar to the display list) consists of a number of specified items. The customer specifies the readout sequence. This sequence is set at the factory. All items are identified with OBIS codes when read out.

Readout and display items

The items that can be placed in the readout list (in any order except for "Error code" which is always first in the list) are listed in section 5.2.9 "Meter Display List – Available Items with OBIS Codes" on page 31. Most of these items can be included in the read out list.

Readout error code (F.F)

The error code consists of 8 bits and describes the following:

Bit number	Allocation
0	Not used
1	MMI initialisation or communications failure
2	Error accessing EEPROM
3	Calibration data is corrupted
4	Not used
5	Error restoring energy registers
6	Data saved to EEPROM on power fail is corrupted
7	Not used



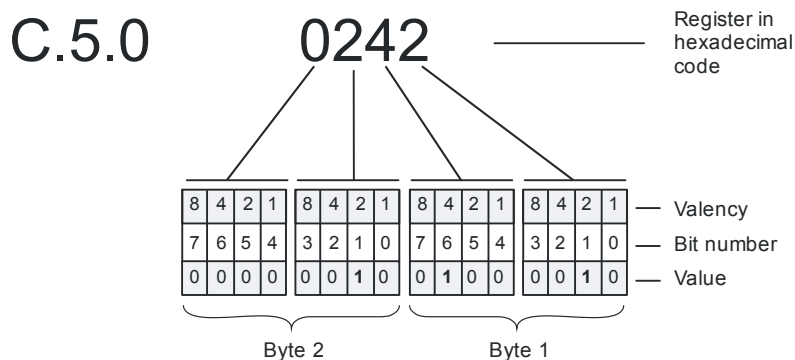
Valid for readout with E35C-modules! For other modules other codes could be delivered e.g. equal to error display values.

5.5.3 Readout Status Code (C.5.0)

The E350 devices feature along with universal device status symbol showed on display also a status register which shows the current status of the device. The readout status register C.5.0 consists of 16 bits (2 bytes) and describes the following:

Bit number	Allocation																												
0	Reverse (export) detect (cleared after readout)																												
1	Creep flag (set on product initialization and cleared when meter first registers energy)																												
2	L1 phase fail flag																												
3	L2 phase fail flag																												
4	L3 phase fail flag																												
5 to 7	Active rate (coded): <table><tr><th>bit 7</th><th>bit 6</th><th>bit 5</th><th>active rate</th></tr><tr><td>0</td><td>0</td><td>0</td><td>rate 1</td></tr><tr><td>0</td><td>0</td><td>1</td><td>rate 2</td></tr><tr><td>0</td><td>1</td><td>0</td><td>rate 3</td></tr><tr><td>0</td><td>1</td><td>1</td><td>rate 4</td></tr><tr><td>1</td><td>0</td><td>0</td><td>rate 5</td></tr><tr><td>1</td><td>0</td><td>1</td><td>rate 6</td></tr></table>	bit 7	bit 6	bit 5	active rate	0	0	0	rate 1	0	0	1	rate 2	0	1	0	rate 3	0	1	1	rate 4	1	0	0	rate 5	1	0	1	rate 6
bit 7	bit 6	bit 5	active rate																										
0	0	0	rate 1																										
0	0	1	rate 2																										
0	1	0	rate 3																										
0	1	1	rate 4																										
1	0	0	rate 5																										
1	0	1	rate 6																										
8	Strong magnetic DC field detected																												
9	Terminal cover removed																												
10	Disconnecter state (0 = open, 1 = closed)																												
11	Disconnecter tamper detected																												
12 to 15	reserved																												

The bits 8, 9 and 11 will be set as soon as a tamper event was registered. The bits will be reset only at power down (if configured) or by a reset signal over the optical or AMR-interface.



The status register is available to be read via communication (public or optical) or displayed on LCD in hexadecimal form.

Some meter configuration contains also a special code with is 4 bytes long. All reserved or not used bits are set to 0 by default.

5.5.4 Data Readout Procedure via Optical Interface or AMR Module

1. Start the AMR Module (according to the associated user manuals).
2. Connect the cable of the reader head to the Hand Held Terminal.
3. Place the reader head in the marked position on the face plate of the meter. The reader head is held magnetically.
4. Start the data readout with the Hand Held Terminal.
5. Remove the reader head from the meter again after readout.

Readout list (example)

The data read out are recorded in the form shown below. The scope and sequence of values in the readout list is determined by parameterisation.

Info flow	Readout list	Significance
→	/?! ^{C_RL_F}	Opening string (initial sign on)
←	/LGZ0ZCF100AC.MXX ^{C_RL_F}	Unit recognition for the specific manufacturer (no identification of data; MXX: SW version)
→	<ACK>0Z0 ^{C_RL_F}	Acknowledgement; Z: Transmission rate
←	<STX> F.F(00) ^{C_RL_F}	Start of text, Error message (readout flag)*
←	C.1.1(0000000074892473) ^{C_RL_F}	Meter identification number 1
←	1.8.0(000065.3*kWh) ^{C_RL_F}	Total active energy import
←	2.8.0(000003.5*kWh) ^{C_RL_F}	Total active energy export
←	1.8.1(000021.5*kWh) ^{C_RL_F}	Active energy import rate 1
←	1.8.2(00043.8*kWh) ^{C_RL_F}	Active energy import rate 2
←	2.8.1(000001.5*kWh) ^{C_RL_F}	Active energy export rate 1
←	2.8.2(00000.0*kWh) ^{C_RL_F}	Active energy export rate 2
←	C.5.0(02) ^{C_RL_F}	Status code (phase fail flag)
←	! ^{C_RL_F} <ETX><BCC>	End of text, Checksum

Fig. 5.7 Example of readout list

* Valid for readout with E35C-modules! For other modules other codes could be delivered e.g. equal to error display values.

<ACK>, <CR>, <LF>, <STX>, <ETX>, <BCC> ASCII character not visualised in the data readout list.

The code Z in the data readout acknowledge string identifies the required transmission rate for the data to follow:

Code Z	Transmission rate
0	300 bps
1	600 bps
2	1200 bps
3	2400 bps
4	4800 bps
5	9600 bps

5.5.5 Addressability of Meter

The meter monitors every communication request received over the optical port or the AMR-interface. The AMR-interface can be controlled by various inputs from the module (e.g. cs-interface-input).

With SW-versions M52 or higher the meter will react to the communication request only under either of the following conditions:

- If the request contains no address,
- If the address matches with the address of the meter.

The address of the meter is preset to the serial number of the meter.

For SW-versions prior to M52 the meters reacts only if the request contains no address.



If the meter is connected to a communication bus with several meters, the communication request must be started with address. Otherwise a communication conflict between the meters will occur.

6 Service

6.1 Operating Faults

If the LCD is not readable or the data readout does not work, the following points should be checked first:

1. Is the mains voltage present (main fuse intact)?
2. Is the maximum permissible ambient temperature not exceeded?
3. Is the optical interface and/or the liquid crystal display clean (not scratched, painted over, misted over or soiled in any way)?



Danger of short-circuits

Never clean soiled meters under running water or with high pressure devices. Water penetration can cause short-circuits. To remove normal dirt like dust a damp cloth is sufficient. If the meter is heavily soiled, it should be dismantled if necessary and sent to an authorised service centre, so that a new plastic viewing window can be fitted.

If none of the points listed is the cause of the fault, the meter should be disconnected, removed and sent to the responsible Landis+Gyr service centre (according to section 6.3 "Repairing Meters").

6.2 Error Codes

There are two kinds of errors: persistent and transient errors. Transient error codes are automatically reset at the next readout. The errors can also be cleared either using the formatted write command C150 or by power cycling the meter.



Note

The formatted write command C150 only clears the error flags in the error register, it does not eliminate the error.

Persistent error codes cannot be reset in the field. If the reason for the error persists, for example in the case of a component failure, power cycling will not clear the error. A meter showing a persistent error code must be considered unsafe for further use. Contact a Landis+Gyr Service Centre for support.

6.2.1 Structure of an Error Code

An error code is an eight digit value. Each digit of the error code represents four errors (i.e. four bits of the error register). The status of the four bits is shown in hexadecimal code, i.e. the single digits may show values between 0 (no error code set) and F (all four error codes set).



Error codes are added

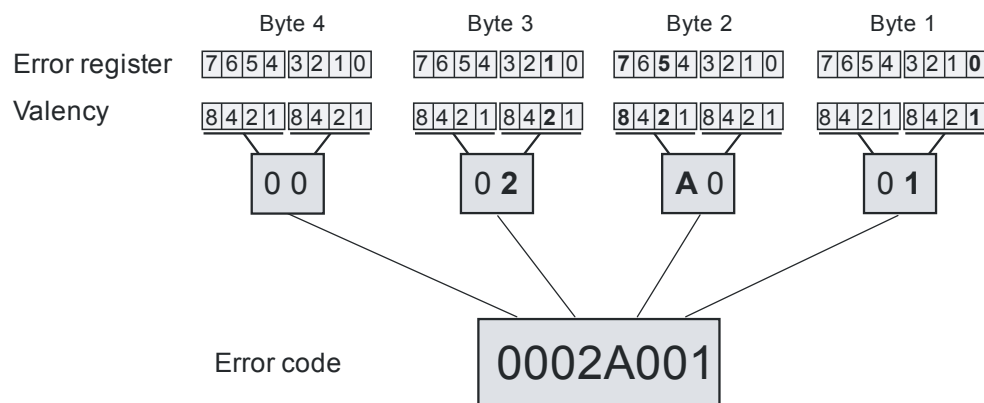
As all errors are shown in hexadecimal code, a single error can appear in various ways depending on the presence of other errors.

Example:

Two errors are shown as: F.F 00002001

Another two errors occur: F.F 00028000

The displayed error code reads: F.F 0002A001



6.2.2 Error Code Descriptions

The following error code descriptions apply for E350 series 2 meters.

Error code descriptions for E350 series 1 meters can be found in the functional description D000028645.

The allocation of the defined errors to the individual bits of the error register and the error code of the single errors is as follows:

Byte	Bit	Valency	Error code	Error code description
1	0	1	00 00 00 01	Insufficient time to complete power failure
	1	2	00 00 00 02	More than 32 consecutive attempts to communicate with, or initialise the MMI devices have failed
	2	4	–	Not used
	3	8	00 00 00 08	Reserved
	4	1	–	Not used
	5	2	–	Not used
	6	4	–	Not used
	7	8	00 00 00 80	Reserved
2	0	1	–	Not used
	1	2	–	Not used
	2	4	–	Not used
	3	8	–	Not used
	4	1	–	Not used
	5	2	00 00 20 00	Calibration value failed checksum*
	6	4	00 00 40 00	Power fail data failed checksum
	7	8	00 00 80 00	Failed checksum when restoring registers from EEPROM*

Byte	Bit	Valency	Error code	Error code description
3	0	1	–	Not used
	1	2	00 02 00 00	Error accessing EEPROM
	2	4	–	Not used
	3	8	00 08 00 00	Reserved
	4	1	–	Not used
	5	2	00 20 00 00	Reserved
	6	4	00 40 00 00	Error restoring energy registers
	7	8	00 80 00 00	Error saving energy registers
4	0	1	–	Not used
	1	2	–	Not used
	2	4	–	Not used
	3	8	–	Not used
	4	1	–	Not used
	5	2	–	Not used
	6	4	–	Not used
	7	8	80 00 00 00	Reserved

* These errors cannot be cleared using the formatted write command C150 or by power cycling the meter. Contact a Landis+Gyr Service Centre for support.

6.3 Repairing Meters

The following procedure should be adopted if a meter repair is necessary:

1. If installed, remove the meter (see section 4.5) and fit a substitute meter.
2. Describe the error found as exactly as possible and state the name and telephone number of the person responsible in case of inquiries. Please also state serial no. and complete type designation no.
3. Pack the meter to ensure it is not damaged during transport. Use the original packing, if available. Do not enclose any loose components.
4. Send the meter to an authorised service centre.

7 Maintenance

The meter is maintenance-free. The following points should be regularly checked:

- Is the meter dry and clean (particularly display and optical interface)?
- Is the meter in operation and serviceable (displayed data reasonable)?
- Are all seals undamaged?
- Is there an error recorded based on periodical internal self tests since the previous check (check on the display or readout list)?
- Have the values of the energy registers changed within reasonable limits since the last data readout (no unauthorised manipulations)?

Continue with section 6.3 "Repairing Meters" in case of irregularities.

7.1 Meter Testing

The meters are calibrated during manufacturing. A recalibration later on is not possible. Meter tests should be performed at periodic intervals according to the valid national regulations (either on all meters or on specific random samples). For this purpose, the meters must be removed as described in section 4.5 "Disconnecting the Meter" and replaced by a substitute meter for the duration of the test.

7.1.1 Higher Register Resolution

The meter features a *certification display sequence* which allows registers to be displayed with 3 decimal places. See 5.2.5 "Display Sequence".

This sequence is entered by pressing the display button for more than 5 s. It is left again if the display button is not pressed for a time between 0 and 30 minutes (default 30 minutes) determined by parameterisation.

Display example



This mode is used for accelerated product certification which can now be done with 0.5 kW in about 2 minutes. It is indicated by a flashing decimal point.

7.1.2 Measuring Times

For technical reasons higher measuring deviations can occur during short-term measurements. It is therefore recommended to use sufficiently long measuring times in order to achieve the required accuracy.

ZCF
U_n=230 V

Table of required measuring times:

Current [A]	Measuring uncertainty 0.2% cosφ=1	Measuring uncertainty 0.1% cosφ=1
0.2	70 s	4.5 min
0.5	20 s	45 s
≥1	20 s	20 s

7.1.3 Optical Test Outputs

The red test diode is positioned on the face plate. It supplies pulses with a value of 1 Wh of the import or export energy measured. This corresponds to a meter constant of 1'000 imp/kWh. For meter testing purposes, only the rising edge is decisive.

7.1.4 Connection to a Meter Testing Device

To test the meter, connect it to a dedicated testing device.

The meter uses a voltage jumper whereby a spring contact connects the voltage circuit of the meter to the phase terminal. By inserting a contact pin of 2.5 mm diameter, the voltage and current circuits of the meter are separated and the test voltage is connected via the contact pin. See Fig. 7.1.

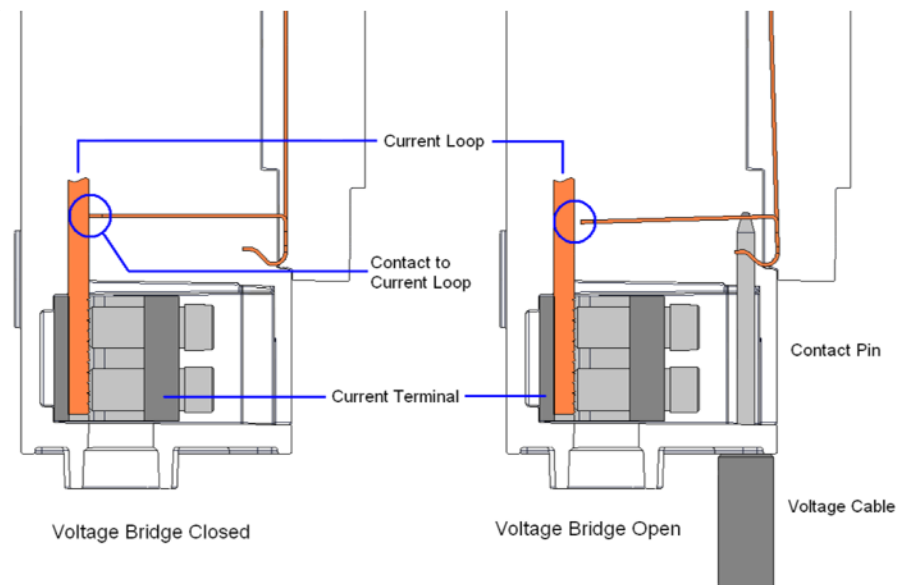


Fig. 7.1 Voltage jumper with test voltage connection

Procedure:

1. Connect the meter to the terminals of the testing device as shown in the meter connection diagram and according to the usual testing methods. Remove the access lock sliding piece, if present.
2. To connect the test voltage, use a connecting cable with a contact pin of 2.5 mm diameter and 40 mm length (± 1 mm). Insert this pin in the opening provided on the front of the terminal block, right above the measuring terminals.



Keep voltage cables free from voltage when inserting

Touching live contact pins can be fatal.

3. After testing, remove the cable (voltage-free!) from the terminal cover. The spring closes the contact and the voltage is connected again. Insert the access lock sliding piece again and, if necessary, seal it.

7.1.5 Creep Test

A test voltage U_p of $1.15 U_n$ is used for the creep test (no-load test) according to IEC 62053-21 (e.g. $U_p = 265 \text{ V}$ with $U_n = 230 \text{ V}$).

Procedure:

1. Disconnect the meter from the mains for at least 10 seconds.
2. Switch on the test voltage U_p and wait approx. 10 seconds. Both the active (circle) and the reactive (diamond) anti-creep indication must now be permanently on. The energy direction indicators are off.



7.1.6 Starting Test

Procedure:

1. Apply a load current of 0.1% of the base current I_b or, for MID-meters, of the reference current I_{ref} , e.g. 10 mA with $I_b = I_{ref} = 10 \text{ A}$, and the voltage U_n . The meter must remain in creep.



2. Increase the load current to 0.5% I_b (for MID: to 0.5% I_{ref}) (i.e. 50 mA with $I_b = I_{ref} = 10 \text{ A}$). The energy direction arrow must appear within 10 seconds and both anti-creep indications must disappear. The optical test output for active energy must start to flash.



7.2 Cleaning



Danger of short-circuits

Never clean soiled meters under running water or with high pressure devices. Water penetration can cause short-circuits. To remove normal dirt like dust a damp cloth is sufficient. If the meter is heavily soiled, it should be dismantled if necessary and sent to an authorised service centre, so that a new plastic viewing window can be fitted.

8 Decommissioning, Disposal

This section explains the disconnection of the meter from the system and its correct disposal.

8.1 Decommissioning

The procedure for disconnecting and removing the meter from the mains is described in section 4.5.

8.2 Disposal

Based on the data specified in environmental certificate ISO 14001, the components used in meters are largely separable and can therefore be taken to the relevant disposal or recycling point.



Disposal and environmental protection regulations

For the disposal of meters observe the local disposal and environmental protection regulations in effect without fail.

Components	Disposal
Printed circuit boards	Electronic waste: disposal according to local regulations.
Metal parts	Sorted and taken to collective materials disposal point.
Plastic components	Sorted and taken to recycling (regranulation) plant or if no other possibility to refuse incineration.

9 Annex: Declaration of Conformity



Declaration of conformity Déclaration de conformité Konformitätserklärung EXT075-2

Landis+Gyr⁺

We
Nous
Wir

Landis+Gyr Limited
1 Lysander Drive,
Northfields Industrial Estate,
Market Deeping, Peterborough
PE6 8FB. United Kingdom.

declare under our sole responsibility that the products
déclarons sous notre seule responsabilité que les produits
erklären in alleiniger Verantwortung, dass die Produkte

Product Name : E350

• Single phase static meter	Class index B	ZCF110A...s2
Compteur statique monophasé	Genauigkeitsklasse B	ZCF110C...s2
Statischer Einphasenzähler	Class index A	ZCF120A...s2
	Genauigkeitsklasse A	ZCF120C...s2

to which this declaration relates is in conformity with the requirements of the following directives
auxquels se réfèrent cette déclaration, sont conformes aux prescriptions des directives
auf die sich diese Erklärung bezieht, konform sind mit den Anforderungen der Richtlinien

• 2004/22/EC	Measuring Instruments Directive (MID)
• 2004/22/EG	Europäische Messgeräte-Richtlinie (MID)

The conformity was assessed in accordance with MID Module B+D and the following harmonised EN-standards
La conformité fut contrôlée selon MID Module B+D et les normes EN-harmonisées
Die Konformität wurde überprüft anhand MID Module B+D und der harmonisierten EN-Normen

• EN 50470-1: 2006	Electricity metering equipment (a.c.). General requirements, tests and test conditions. Metering equipment (class indexes A, B and C)
• EN 50470-3: 2006	Electricity metering equipment (a.c.). Particular requirements. Static meters for active energy (class indexes A, B and C)

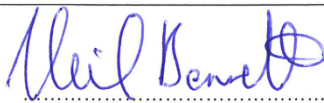
Number of EC-type examination certificate. Notified Body
Numéro du certificat de l'examen type EC. Organisme notifié
Nummer der EG-Baumusterprüfbescheinigung. Benannte Stelle

• T10244	NMi Certin B.V., (NB0122) Hugo de Grootplein 1,3314 EG Dordrecht, The Netherlands
-----------------	--

Number of quality system approval certificate. Notified Body
Numéro du certificat d'approbation du système de Qualité. Organisme notifié
Nummer des Zertifikates über die Anerkennung des Qualitätsmanagementsystems. Benannte Stelle

• GB07/72954	SGS United Kingdom Ltd., (NB0120) Systems & Services Certification, 202B Worle Parkway, Weston-super-Mare, BS22 6WA.UK
---------------------	---

Northfields
18 Mar 2010


Neil Bennett, Head of R&D,
E-Residential EMEA


Kevin Rayner, Quality & Process Manager

This explanation and the associated documents are deposited:
Cette explication et les documents correspondants sont déposés:
Diese Erklärung und die zugehörigen Unterlagen sind hinterlegt bei:

Bob Cox, Landis+Gyr

EXT075-2 c de en fr

Contact:

Landis+Gyr (Europe) AG
Theilerstrasse 1
CH-6301 Zug
Switzerland
Phone: +41 41 935 6000
www.landisgyr.com

