

# PAA

POLISH AMERICAN ASSOCIATION

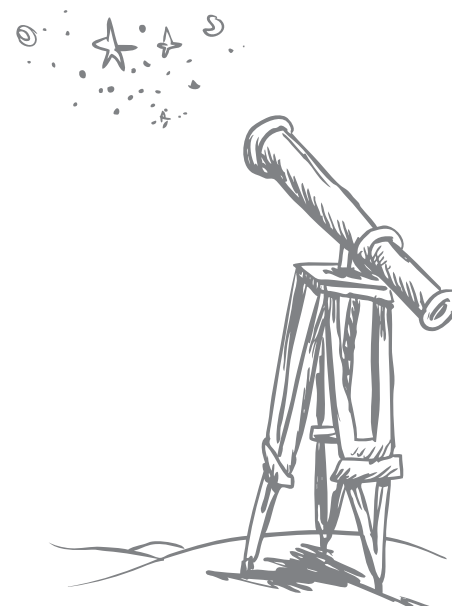
Resources for Changing Lives



# Table of Contents



Creating Pathways .....	4
Introducing Our Partners .....	5
Directors and Executive Management .....	6
Treasurer's Report .....	7
Combined Federal Campaign Contributors .....	8
Employee Participants.....	9
Contributors List .....	10
In-Kind Donors.....	12
Employees.....	13
Programs .....	14
Employment.....	15
Education.....	16
Immigration.....	17
Social Services .....	18
Supportive Services .....	19





The mission of the Polish American Association, a human service agency, is to serve the diverse needs of the Polish community in the Chicago metro area by providing resources for changing lives, with an emphasis on assisting immigrants.

#### **WE BELIEVE:**

- Each client of the PAA is a unique individual with different concerns and abilities and shall be treated with dignity, respect and trust
- PAA programs and services shall assist in the empowerment of people as individuals so that they may reach their full potential in all aspects of their lives
- PAA programs and services shall be most effective when a holistic approach is taken to individual needs
- PAA shall make every effort to respond to the unmet and well researched needs within the Polish community by providing programs and services not available elsewhere
- PAA shall advocate on behalf of those within the Polish community who may not be able to speak for themselves
- PAA shall foster linkages and collaborative efforts with other human service agencies and also within the extended Polish community, including persons most comfortable speaking either the English or Polish language



# Creating Pathways

Over the past 91 years, the Polish American Association has done amazing things! Through our 28 programs and services, we've unlocked the door to a better tomorrow and provided the resources for changing lives...

- to immigrants
- to individuals and families
- to children and the elderly
- to the hungry and the homeless
- to victims of domestic violence and the addicted
- to all who come to our doors for help

We stand ready to listen, to help and to offer a holistic, multi-faceted approach to help our clients and their families get through challenging times. As an agency, we also look forward to a bright tomorrow. One that includes:

- Fostering our new young leadership group toward assuming greater roles in the community
- Creating an alumni association for graduates of our school based learning programs
- New participant funded programs
- Developing more strategic partnerships
- Meeting the needs of new immigrants as our nation realizes immigration reform
- Further reducing our dependence on government funding

We approach our century of service with the same passion and commitment that has marked our 91 years as an agency.

As in the past, we rely on YOU. As you read this report, you will hear the voices of some of our community partners, the over 225 relationships that enable us to meet the needs of the underserved in our community.

We invite you not just to hear their voices but to join us. We have done amazing things together and together will we will unlock even more doors to a better tomorrow.

**Kenneth A. Berezewski**  
Chairman of the Board

**Magdalena Dolas**  
Interim Executive Director





This year's annual report celebrates the many ways in which the Polish American Association's programs and services have created pathways to a better future for our clients, the immigrants and underserved within the greater Chicago area.

Creating a pathway involves more than indicating a way to overcome difficulties, be it substance abuse, limited English skills, or workplace skills. Creating a pathway involves offering critical support and guidance to clients as they conquer the barriers which prevent them from reaching their full potential in all areas of their lives. Through our four program areas of Immigration, Clinical, Supportive, and Education/Employment Services, the PAA has assisted over 10,000 to create that pathway.

During FY'14, the PAA was able to continue to provide services and even expanded services from 28 to 30 programs in spite of continuing government funding cuts.

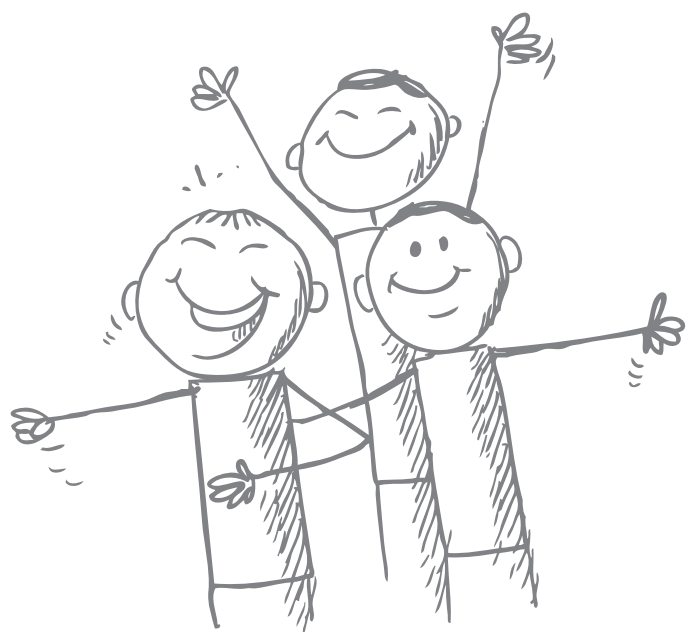
### **Our expanded services included**

- *Increased on-the-job training partnerships in our Employment Department*
- *The development of a program to help clients move into the IT field*

At the same time we created the position of a career navigator to assist clients in preparing for more skilled positions and inaugurated a supervised visitation program.

In achieving these goals we also increased our community partnerships and fostered new areas of funding.

# Introducing OUR PARTNERS



# DIRECTORS and EXECUTIVE MANAGEMENT



## **Chairman**

Kenneth A. Berezewski  
*Mayer Brown LLP*

## **Vice Chair**

Stephen Wrobel  
*Inland Bank & Trust*

## **Treasurer**

Gregory Kojak  
*Lincoln Park Financial  
Group, LLC*

## **Secretary**

Michael H. Traison  
*Miller Canfield Paddock  
and Stone, P.L.C.*

## **Interim**

## **Executive Director**

Magdalena Dolas

## **Directors**

Eva Jakubowski  
*Shop & Save*

Stanley W. Jozefiak  
*True Partners Consulting*

Adam Kamieniak  
*AND Agency*

Camille Kopielski  
*Chicago Public Schools  
(ret.)*

Geraldine Gedroic  
Lichterman  
*Keen Realty Management*

Conrad C. Nowak  
*Hinshaw & Culbertson LLP*

Barbara Bury Olendzki

Daniel G. Pikarski  
*Gordon & Pikarski*

Kasha Cianiara-  
Puharich  
*Integra Communications*

Izabela T. Roman, M.D.

Bogna Iwanowska-  
Solak  
*Oak Mill Bakery*

Daniel L. Stankoskey  
*ComEd*

Rev. Jason Torba  
*Saint Ferdinand Parish  
of the Archdiocese of  
Chicago*

Bozena Zweig

## **Honorary Directors**

Dan L. Boho  
*Hinshaw & Culbertson*

Roger F. Kovack  
*ComEd (ret.)*

Lawrence W. Leck

Thaddeus J.  
Makarewicz, Esq.  
*The Law Offices of  
Thaddeus J. Makarewicz*

Most Rev. Thomas J.  
Paprocki  
*Bishop of Springfield  
of Illinois*

Robert J. Paszczak  
*Wheaton Bank & Trust  
Company*

John J. Pikarski, Jr.  
*Gordon & Pikarski*

Andrew Przybylo  
*White Eagle Banquets*

Mitchell J. Wiet  
*Northwestern Memorial  
Hospital (ret.)*

Ernest R. Wish  
*WRM, Inc.*



# TREASURER'S REPORT

**EXPENSES 96.7%**

**SUPPORT SERVICES 3.3%**

**TOTAL NUMBER OF PAA PROGRAMS: UNDUPLICATED CLIENTS, 10,492**

**TOTAL NUMBER OF PEOPLE SERVED BY PAA: PROGRAMS, 29**

**TOTAL EXPENSES: \$4,966,091.00**

**INCREASE IN UNRESTRICTED NET ASSETS: \$263,147.00**

**INCREASE IN TEMPORARILY RESTRICTED NET ASSETS: \$93.00**

**INCREASE IN TOTAL NET ASSETS: \$263,240**

The Polish American Association is an Illinois non-profit corporation qualifying for tax-exempt status under section 501c(3) of the Internal Revenue Code. Revenues are received in the form of contributions from individuals, businesses and organizations; grants from foundations and corporations; contracts and grants from federal, state and local governments; and fees for program services. The 25 member volunteer board of directors is responsible for setting policy as well as oversight of the organization's operations including its finances. Financial statements are prepared monthly, reviewed and approved quarterly and audited on an annual basis. The condensed financial statements for the year ended June 30, 2013 appearing in this report were derived from audited financial statements. The full audited financial statements are available upon request.

Very Truly,  
**Gregory W. Kojak**  
Treasurer, Polish American Association



## Income:

Government Grants & Contracts 85.9%  
Contributions & Special Events 8.3%  
Program Service Fees 2.2%  
Foundations & Corporations 3.0%  
United Way 0.5%  
Other 0.1%

## Assets:

Current Assets \$1,699,245  
Property & Equipment \$847,545  
**Total Assets \$2,546,790.00**

## Liabilities & Net Assets:

Liabilities \$566,996  
Unrestricted Net Assets \$1,113,347  
Temporary Restricted Net Assets \$866.447  
**Total Liabilities & Net Assets \$2,546,790**

## Revenues:

Contributions & Special Events \$435,422  
United Way \$25,140  
Government Agencies \$4,493,860  
Corporate & Foundation Grants \$157,151  
Program Service Fees \$113,803  
Other Revenue \$3,862  
**Total Liabilities & Net Assets \$5,229,238.00**

## Program Services:

Education \$1,562,008.00  
Social Services \$1,004,641  
Employment \$303,694  
Homemakers \$1,632,326.00

## Supporting Services:

Management/Fundraising \$329,383.00



# Combined FEDERAL campaign CONTRIBUTORS

## Alaska

CFC of South Central  
Alaska Area

## Arizona

CFC of Maricopa County  
CFC of Phoenix of  
Maricopa County

## California

Greater Los Angeles CFC  
Metropolitan Arts  
Partnership CFC  
CFC Monterey and Santa  
Cruz Counties  
CFC of Sacramento

## Connecticut

Community Health  
Charities CFC

## Delaware

CFC of Delaware

## District of Columbia

CFC National Capitol Area

## Florida

Atlantic Coast CFC  
Central Florida CFC  
Greater Pensacola CFC  
CFC of Northeast Florida/  
Southeast Georgia  
Northwest Florida CFC  
Okaloosa-Walton  
Counties CFC  
Suncoast CFC  
UW of Brevard County

## Georgia

Central Savannah River  
Area CFC  
CFC for Costal Georgia  
UW of Metropolitan  
Atlanta CFC  
UW of Metropolitan  
Atlanta CFC  
UW of Middle Georgia  
CFC of Northeast Florida/  
Southeast Georgia  
Tri-Community CFC

## Hawaii

Hawaii Pacific CFC

## Illinois

AT&T Employee Giving UW  
Campaign  
Abbott Fund  
CFC of Chicago Area  
Lake County CFC  
UW of the Laurel Highlands

## Indiana

Federated Campaign  
Stewards

## Kentucky

CFC of North Central  
Kentucky, Forth Knox

## Louisiana

CFC of Central Louisiana

## Maine

CFC New Hampshire/  
Southern Maine CFC

## Maryland

CFC of Central Maryland  
Chesapeake Bay Area  
CFC

## Massachusetts

Action for Boston  
Community Development  
CFC for Southeastern  
Massachusetts

## Mississippi

CFC

## Missouri

Columbia Area CFC  
Fort Leonard Wood CFC  
Gateway CFC  
Heartland CFC

## Nebraska

Heart of the Midlands CFC

## Nevada

CFC of Southern Nevada  
#0560

## New Hampshire

CFC New Hampshire/  
Southern Maine CFC

## New Jersey

GE United Way Campaign  
Northern New Jersey CFC  
UnitedHealth Group  
Employee Giving  
Campaign

## New Mexico

Sun Country CFC

## New York

UW of Buffalo and Erie  
County CFC  
New York City CFC  
Greater Rome Area CFC  
North Country CFC  
Taconic Valley CFC

## North Carolina

CFC  
Greater NC Area CFC  
CFC of Onslow/  
Camp Lejeune  
CFC of Southeastern  
North Carolina

## North Dakota

North Dakota CFC

## Ohio

UW of the Greater Dayton  
Area  
CFC for Greater Cleveland  
CFC of Central Ohio

## Oklahoma

Fort Sill-Lawton CFC  
CFC of Oklahoma City

## Pennsylvania

CFC of Lebanon County  
InterMountain CFC  
Philadelphia Area CFC  
UW of Wyoming Valley  
CFC

## Texas

Abilene Area CFC  
Coastal Bend Area CFC  
UW of the Concho  
Valley CFC  
UW of Greater Houston  
CFC of the Texas  
Gulfcoast  
San Antonio Area CFC  
Gulf Coast CFC  
Sun Country CFC

## Utah

UW of Northern Utah for  
Utah CFC

## Virginia

Global Impact CFC  
Overseas  
CFC of South Hampton  
Roads  
UW Thomas Jefferson Area

## Washington

CFC of Island County  
CFC of Pierce, Thurston  
and Lewis Counties

## Wisconsin

CFC of Greater Wisconsin



ABM Lakeside, Inc  
A Abiding Care Inc.  
Aeorotek Commercial Staffing  
Advocate Health Center  
Alexian Brothers Medical Venter  
Advanced Specialty Lighting  
Amglo Kemlite Laboratories, Inc  
Andy's Deli  
Atlas Employment Services  
Away Staffing Agency  
Belmont Village Assisted Living  
Central Baptist Village  
Chicago Metro  
Chicago Workforce Center  
Churchill Cabinet Co.  
Conrad Chicago  
Council for Jewish Elderly  
Crowne Plaza Chicago Metro  
Czerwone Jabluszko Restaurant  
Day Spa – European Touch  
Days Inn Hotel  
Earth Stone  
Eastern Accents  
Eli's Cheesecake Co.  
Euro & Marble Granit Co.  
Finest Fashions, Inc  
Forest Villa Nursing Center  
Frensenius Medical Care  
Fresh Tech Maid Services  
Gottlieb Hospital  
Gate Gourmet  
GTN Construction  
Grot Tool & Manufacturing, Inc  
Harris Bank  
Hilton Worldwide  
Holiday Inn  
Home Depot  
Home Instead Senior Care

Imperial Service System, Inc  
Jewish United Fund  
Kmart  
Kimco Co.  
Lake Cook Health Care Center  
Lakeview Nursing & Rehabilitation Center  
Lowe's  
Lincolnwood Place & Senior Community  
Mail Terminal Services  
Manor Care Health Services  
Manufacturing Works  
Mecalux Inc  
M&R Printing and Equipment  
Med-Stop Inc  
Mercy Hospital  
Metropolitan Development Enterprise Inc  
Mid America Bank  
Mid West Maintenance, Inc  
Total Airport Services  
The Millard Group  
Multy Industries, Inc  
Norridge Health Care & Rehabilitation Center  
Oakton Pavilion Healthcare Facility  
Our Lady of the Resurrection Medical Center  
Peninsula Hotel  
Perfect Cleaning Service  
Prairie Packaging  
Premier Luxury Suites  
Prospect Airport Services Inc  
Schneider Transportation Co  
Staffmark Services  
Quality Janitors & Maintenance Co  
Quantum Foods, Inc  
Regency Nursing Home  
Remodeler's Supply Center

# Community EMPLOYMENT PROGRAM



Resurrection Life Center	United Wholesale, Inc. U.S. Cellular
Resurrection Medical Center	Vacant Propoerty Security
Search Inc	Villa Scalabrini Nursing & Rehabilitation Center
Scrub Professional Building Services	W Hotel City Center
Shop & Save Market	Water Saver Faucet Co
St. Paul's House & Health Care Center	West Suburban Medical Center
Summit Maintenance Co	WIC
Swing Master Corporation	Wolf Driving School
Synergy Home Care	
TCF Bank	
Total Airport Services	
Tukiendorf Training Institute	
United Feather & Down	

# CONTRIBUTORS List

Polish American Association is grateful to all whose contributions have helped us offer resources for changing lives. Donors listed in this report made contributions between July 1, 2013 and June 30, 2014. Due to space limitations, we cannot list donations of \$1-\$249, but we sincerely appreciate all contributions. Thank you for your generosity.

## **Copernicus Circle – \$25,000-\$49,999**

Bank of America, N.A.  
The McCormick Foundation  
The Smogolski Family Trust  
Mitchell & Fran Wiet

## **Maria Skłodowska Curie Circle – \$10,000-\$24,999**

Anonymous  
Karol Uryga-Nawarowski  
Foundation  
Northern Trust Charitable  
Foundation  
Arie & Bozena Zweig  
R.A. Zweig

## **Paderewski Circle – \$5,000-\$9,999**

Anonymous  
Chicago Society Foundation  
Geraldine Gedroic  
Lichterman  
Ted & Barbara Martin  
Leo P. Niemiec  
Nong Shim America, Inc.  
Dr. Izabela Roman

## **Conrad Circle – \$2,500-\$4,999**

Advocate Lutheran General  
Hospital  
Kenneth A. Berezewski  
BMO Harris Bank N.A.  
Grazyna Buda  
Fifth Third Bank  
Cezary & Eva Jakubowski  
Stanley Jozefiak  
Kasia's Deli, Inc.  
Camille Kopielski  
Krzysztof Koziol  
John Kulczycki  
North Shore Community Bank/  
Wintrust Commercia  
Oak Mill Bakery  
PROGRESSIVE Truck Driving  
Schools

Quantum Foods, Inc.  
Shop & Save  
Bogna & Walter Solak  
Tom Startek  
Star-Tech Glass, Inc.  
Stephen Wrobel  
Tukiendorf Training Institute  
Z Capital Partners

## **Chopin Circle – \$1,000-\$2,499**

Anonymous  
Brustin and Lundblad Ltd.  
Richard & Maria Ciesla  
Country Financial  
Cukierski & Kowal, L.L.C.  
DeHayes Family Foundation,  
Inc.  
Gordon & Pikarski  
Josh Herz  
Insurance Industry Charitable  
Foundation  
Integra Communications  
Clem F. Juris  
Eva & Adam Kamieniak  
Dr. Krystyna Kiel  
Emil J. & Marie D. Kochton  
Foundation  
Gregory Kojak  
Mario Machnicki  
Miller Canfield  
Bozena Nowicka McLees &  
John A. McLees  
Kenneth Olendzki  
Parkway Metal Products  
Patrick's Tavern  
Cynthia A. Piech  
Dan Pikarski  
John Pikarski, Jr.  
Polish Roman Catholic Union  
of America  
Kasha Cianciara-Puharich  
James R. Reynolds  
Rich's Foods & Liquors, Inc.  
Stanley & Grazyna Skoczen  
Sovereign Military Order of  
Malta (SMOM)

Jeanne M. Sowa & Craig  
Mitchell  
The Allstate Foundation  
Michael H. Traison  
William A. Panek &  
Association

## **Friends Circle – \$250-\$999**

Mary & Henry Anselmo  
Dr. Geraldine Balut Coleman  
Janusz Barsh  
Bart's Barber Shop  
Dan L. & Sheri Boho  
Drs. Nader & Mandan Bozorgi  
Joanne Brooks  
Frank & Darlene Czaja  
Kazimierz Chlebek  
Thomas P. Coffey  
Community Savings Bank  
Darpet, Inc.  
Joanna Dobecka Lember  
Marek Dygas  
Fairmont Care Centre  
Dr. Marek Gawrysz  
Ronald S. Gertzman  
Glenn Ellyn Bank & Trust—A  
Wintrust Community Bank  
Ela Golebiewska  
Lidia Greszta  
Jolanta Grocholski  
Michael Isaacs  
Jessica Jagielnik  
Jerzy Jakimiec  
Gary Kenzer  
Joanna Koson  
Walter Kotaba  
Carl Kubaszewski  
Christopher Kurczaba  
Lawrence J. Dyjak &  
Associates  
Lipschultz, Levine & Gray  
Mario Machnicki  
Patrick T. Madigan  
Barbara Majka  
Thaddeus J. Makarewicz  
Jerry Malachowski

Agnieszka Malicka  
Michalina Maliszewska  
Walukanis  
Marek & Grazyna  
Maneykowski  
Robert Martwick  
Dr. F. Massuda  
Dr. Jozef F. Mazurek  
MBB Enterprises of Chicago  
Conrad B. Miczko  
Montrose Deli & Cicero Deli,  
Inc.  
Conrad C. Nowak  
Daniel Primozić  
Property Consultants  
Andrew Przybylo  
Agnes Ptasznik  
Regency Rehabilitation  
Center, LLC  
Dr. Neil Rosenberg  
Salzeider Family Charity  
Chris Samulak  
Stanley & Barbara Siembida  
Nick & Nancy Sievers  
Stanley Skoczen  
Christian & Eliana Smaglinski  
Stephen Stabile  
Daniel & Jennifer Stankoskey  
Bogna & Walter Solak  
The Hon. Ray Suarez  
Stefan & Jolanta Szefer  
Taxes -The Financial Services  
Corp.  
Rev. Jason Torba  
Dr. Gregory A. Turowski  
Stanislaw Urbaniak  
Dr. Slawomir & Mira Urgacz  
Vitalidex Corp.  
The White Eagle  
Ernest R. Wish  
Dr. Jolanta Zakrzewska  
Anthony Zaskowski  
Clifford Zolna  
**Tributes**  
In the memory of  
Boleslaw Nowak  
Michael Traison

# PROGRAM Sponsors



## **Anonymous**

Supports Overall Operations

## **Bank of America Foundation**

Supports Programs for the Homeless Shelter, Food Pantry, and Benefits Outreach

## **Chicago Cook Workforce Partnership**

Supports Employment Services

## **Chicago Department of Community Development**

Supports Technical Assistance for Housing

## **Chicago Department of Families and Support Services**

Supports Services for the Homeless, Youth, Vocational Training, Job Placement, Assistance to Victims of Domestic Violence and Support Services for the Elderly

## **Chicago Department of Public Health**

Supports Substance Abuse Treatment

## **Chicago Society Foundation**

Supports Substance Abuse Counseling and Homeless Shelter

## **Circuit Court of Cook County, Adult Probation and Social Service Department**

Supports Domestic Violence Prevention

## **Community and Economic Development Association of Cook County**

Supports LIHEAP Program

## **Emil J. And Marie D. Kochton Foundation**

Supports Social Services and Child and Adolescence Counseling

## **Greater Chicago Food Depository**

Supports Food Pantry and Day Shelter for Homeless Men

## **Haymarket Center**

Supports Substance Abuse Treatment

## **Illinois Attorney General's Office**

Supports Assistance to Victims of Violent Crime

## **Illinois Coalition for Immigrant & Refugee Rights**

Supports the New American Initiative and Outreach and Interpretation Programs

## **Illinois Community College Board**

Supports English as a Second Language Instruction

## **Illinois Department of Commerce and Economic Opportunity**

Supports Job Training, Computer Training, and Employment Services for Underserved Populations

## **Illinois Department of Human Services**

Supports Substance Abuse Treatment and Prevention Programs, Assistance to Victims of Domestic Violence Programs, and Immigration Services

## **Illinois Department on Aging**

Supports Homemaker Assistance for Elderly and Disabled

## **Insurance Industry Charitable Foundation**

Supports Overall Operations

## **Karol Uryga-Narowski Foundation**

Supports Substance Abuse Treatment and Prevention Programs for Teens

## **McCormick Foundation (Chicago Tribune Charitable Trust)**

Supports Job Training and Economic Development

## **Northern Trust Charitable Trust**

Supports Overall Operations

## **Smogolski Family Charitable Trust**

Supports General Operations

## **Sovereign Military Order of Malta (SMOM)**

Supports Homeless Shelter





# IN-KIND Donors

ABT

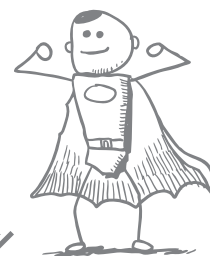
AND Agency LLC –  
Adam Kamieniak  
Elizabeth Adam Spa  
Mary Sendra Anselmo  
Vincent Archacki  
Archer Gold Jewelry  
Atlantis Jewelry  
Henryk Bajena  
Roger Beck Portraits  
Bobak's Sausage Company  
Bull's Eye Expedition Inc.  
Brookfield Zoo – Chicago  
Zoological Society  
Michael Cabonargi  
Chicago Bears  
Chicago Botanic Garden

Chicago Chocolate Tours  
Chicago Cubs  
Chicago White Sox  
Chicago Wolves  
Krystyna Ciura  
St. Constance Church  
Mary Beth Cook  
Jadwiga Cyparska  
Frank W. Czaja  
Benjamin W. DeHayes  
Javier Delgado  
Tidd Dorothy  
Mark Douglass  
Eagle Distributors Inc.  
Anita Eilmes  
Camille Einoder  
Galos Caves  
Agata Gaca  
Nancy Gacki  
Phylis Galuszka  
Marlene Garcia  
Rebecca Gilman  
Robert Groszek  
Marta Grzeskowiak  
Donald Gutowski  
Alfreda Halon  
Rhonda Hartline  
Ava Hernandez  
Paula Harris  
Michele Henrickson  
Enzo Incandela  
InterContinental Hotel  
Katarzyna Kaczmarczyk  
Jessica Jagielnik  
Jan Janiczek  
Krystyna Jankowska  
Maria Jaworska  
Maryla Jaworski  
Tori Jepson  
Jolly Inn – Stanislaw Chwala  
Johnnys Kitchen & Tap  
Mary Jordan  
Barbara Kasza  
Gary Kenzer  
Maria Klekowicz  
Gregory Kojak  
Maria Kolda  
Camille Kopielski  
Donna Kosarzecki  
Joanna Koson  
Teddie Kossof Salon  
and Spa  
Judy Kozlowski  
Kristen Kozlowski  
Krystyna Deli

Ksiegarnia Eva  
Paul Kusinski  
Michelle Kurzydowski  
Katarzyna Laczak  
Annette Lecinski  
Andrew Lenart  
Tori Lepson  
Lettuce Entertain You  
Entertainment  
Steven Levin  
Geraldine Gedroic  
Lichterman  
Lifeline Theater  
Lis Enterprises  
Lowell Foods – Conrad Lowell  
Krystyna Lukawska  
John Lyons  
Thaddeus S. Machnik  
Alicja Majewski  
Agnieszka Malicka  
Lou Malnati's  
Grazyna Maneykowski  
Courtney Marincsin  
Piotr Matejczyk  
Ted & Barbara Martin  
Theresa Mazurek  
Adam Metzger  
Karli Mays  
Migala Communications  
Corp.  
Barbara Modrzynska  
Monastero's Ristorante  
& Private Dining  
Montrose Food Mart & Deli  
Music Box Theater  
Hector Negrón  
Northlight Theater  
Nova Dental  
Conrad Nowak  
Nuns4Fun Entertainment, Inc.  
Oak Mill Bakery – Bogna  
& Walter Solak  
Zofia Oborska  
Old Warsaw  
Jacek Olejnik  
Pasta D'Arte  
PRP Wine International, Inc.  
Zenon Pajfer  
Katarzyna Pawlina  
Roman Piekosz  
Szczepan Piesiecki  
Stanislaw Polanski  
Polish Women's Alliance  
of America  
Andrzej Preger

Quantum Foods, Inc.  
– Edward B. Bleka  
Steve Rakowski  
Malgorzata Rama  
Agnieszka Rapacz  
Krista Reinfeldt  
Nelson Rivera  
Richard Rose  
Jose Saucedo  
Karen Schmidt  
John Schroeder  
Norman Schroeder  
Robert Shillin  
Shop & Save – Eva Jakubowski  
Teresa Sinkowski  
Jakub Siwec  
Marian Skawski  
Cheryl Sklar  
Jozef Slaby  
Joan E. Smuda  
Barbara Sobczak  
Aleksandra Stasiuk  
Agatha Stochmalski  
Janette Strzalka  
Thomas Surma  
Magdalena Suszczewicz  
Bozena Szczesna  
Magdalena Szpara  
UA Auto Transport Inc.  
U.S. Technologies, Inc.  
Chester Walkuski  
Dorota Wandachowski  
Marian Wasko  
Lottie Weinstein  
Kasia Wieselka  
The White Eagle  
Windy City Wedding Dance  
and Tommye Hiocchino  
Marek Wisniowski  
Ewa Witkos-Krynski  
Agnieszka Wojcik  
Ewa Wojtowicz  
Frank Lloyd Wright  
Foundation  
Stephen Wrobel  
Monica Zablocka  
Marta Zaborska  
Katarzyna Zielinski  
Arie & Bozena Zweig

# EMPLOYEES



Aleksandra H. Andrzejewska  
Alexandra Antonik  
Barbara Bagdzius  
Jolanta Baginska  
Renata Baginska  
Barbara Bargiel  
Malgorzata E. Batog  
Wieslawa Bieniewska  
Maria Bis  
Katarzyna E. Blando  
Henryka Blusiewicz  
Teresa Bobrowski  
Malgorzata M. Bodyziak  
Ewa M. Bogacz  
Halina Bozek  
Jadwiga Branicka  
Iwona Brzezinska  
Joanna Ceremon  
Malgorzata Chandler  
Halina Chmielowiec  
Barbara E. Chodorowska  
Zofia Chowaniec  
Elzbieta Chrzanowska  
Michal Chybowski  
Slawomir Czajkowski  
Elzbieta Czerwonka  
Agnieszka Dabrowiecka  
Aneta Dabrowski  
Angelika Danek  
Magdalena Dolas  
Kathy Drabczak  
Wioletta R. Drag  
Cecylia Dudzinski  
Mariana Dzis  
Anita Eilmes  
Dorota Felinska  
Danuta Franczyk  
Boguslawa Gadula  
Andrzej M. Gasienica  
Tadeusz Gaszcz  
Barbara Gawronska  
Mary A. Gembicki  
Daria Gicela  
Krystyna Gierczyk  
Teresa Glen  
Elzbieta Goc  
Robert D. Gols  
Barbara Gorla  
Dana Grymova

Ewa Grzybowski  
Krystyna Gurka  
Barbara Haniaczek  
Grazyna Hatala  
Ewa Hiszczynski  
Anna Iwanicka  
Jolanta Jablonski  
Urszula M. Jaronczyk  
Renata Jasniuk  
Anna Jastrzebska  
Maria S. Jaworska  
Malgorzata J. Jedeluk  
Sonji Jones  
Bianka A. Kaminska  
Janina Kapinos  
Ona Kastaniene  
Barbara Kasza  
Halina Klarich  
Ewa M. Klepaczek  
Maria Klim  
Wanda Klimecka  
Piotr J. Kochanowicz  
Zofia Kojtek  
Pawel M. Kolodziej  
Katherine A. Koptilin  
Krzysztof Koscielniak  
Zofia Koscielniak  
Barbara Kotarska  
Maria Kowal  
Teresa Kozłowska  
Miroslawa Krolikowska  
Marta T. Kromka-Brigagliano  
Maria Kruczek  
Magdalena Krzeminska  
Malgorzata Kurdziel  
Helena Kurek  
Adam Kusz  
Bozena Kwasna  
Gertruda Labedz-Monaco  
Katarzyna A. Lebiecz  
Maria Leja  
Stanislawa Les  
Eula Lewis  
Iwona M. Lippert  
Ewa Lisiewicz  
Sylvia Lisiewicz  
Christiane M. London  
Barbara Lukaszek  
Patrick T. Madigan

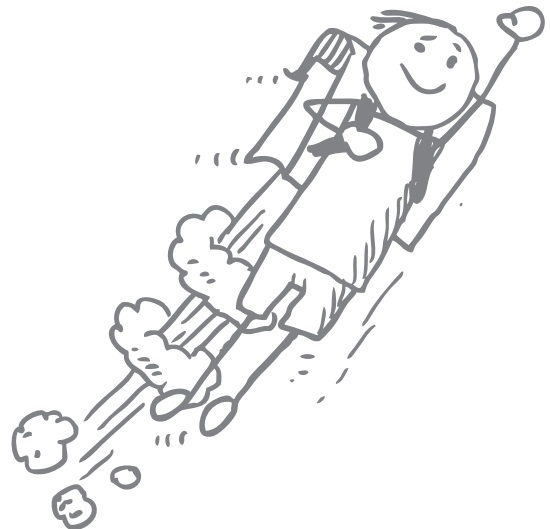
Genowefa C. Magiera  
Elzbieta Makowiecka  
Olena Malanii  
Janina C. Malewicz  
Irene Marasz  
Maria Maruszak  
Krystyna Mass  
Zofia Matachowska  
Agnieszka Meciwoda-Schmidt  
Ewa Z. Mikolajewska  
Radoslaw Misiarz  
Janina Molek  
Jadwiga Morzy  
Leokadia Mosio  
Jolanta Nicieja-Janczarek  
Malgorzata Olczak  
Halina Olejnik  
Misiarz Katarzyna Olejnik  
Teresa A. Palac  
Lidia Paliwoda  
Maria Palusinska  
Jadwiga Panfil  
Marta Pereyra  
Zofia L. Piekarczyk  
Urszula S. Piekarska  
Zbigniew Pienkowski  
Ludmila Pietraszek  
Barbara Pietrowski  
Mariola Pik  
Tomasz F. Pik  
Ryszarda Pluzyczka  
Malgorzata Popek  
Alicja Posniak  
Teresa Poznanski  
Katarzyna Przychodzen  
Katarzyna Rachwal  
Agata Radek  
Rodolfo F. Ranola  
Dorota Redlich-Lewandowska  
Astryda H. Reiter  
Jadwiga Rozanska  
Barbara A. Rusin  
Teresa Rusin  
Bozena Sajdak  
Eva Sikora-Cholewa  
Krystyna Sip  
Danuta E. Slodyczka-Florek  
Halina Smolenski  
Teresa Smrokowska

Kamila Smyk-Jaworski  
Agnieszka Sobczyk  
Barbara Sobecka  
Barbara Stadnicki  
Marta M. Stanczyk-Przybylska  
Krystyna M. Starunczak  
Franciszka Staszewski  
Agatha Stochmalski  
Bronislawa T. Stopka  
Ewa A. Susik  
Ewa Susman  
Bozena T. Swiatek  
Jozefa Swiatek  
Gaja A. Swierzowski  
Katarzyna E. Swigon  
Elzbieta Szopinska  
Alicja Szremska  
Marzenna Szwarc  
Paulina Szwarc  
Christopher Szykula  
Renata Teper  
Jadwiga Tomaszewski  
Dorota Trybula  
Maria Trzmielewska  
Bozena Uryga  
Ludwina Waksmundska  
Urszula Waksmundski  
Renata Waliszewska-Pakula  
Malgorzata Walkowska  
Boguslawa Wazydrag  
Elzbieta Wierzchon  
Krystyna Wiszowata  
Edyta Wojno  
Irena Wojtkowski  
Stanislawa Wojton  
Mirella R. Wolak  
Walentyna Wolska  
Dorota M. Zaghloul  
Grazyna Zajackowska  
Magdalena Zakrzewska  
Elzbieta Zaworski  
Bozena W. Zdralka  
Maria J. Zebrowski  
Daniela A. Zimnicka  
Krystyna Znorko  
Jack W. Zurowski  
Barbara Zych



# PROGRAMS

////////////////////  
**EMPLOYMENT**  
**EDUCATION**  
**IMMIGRATION**  
**SOCIAL SERVICES**  
**SUPPORTIVE SERVICES**



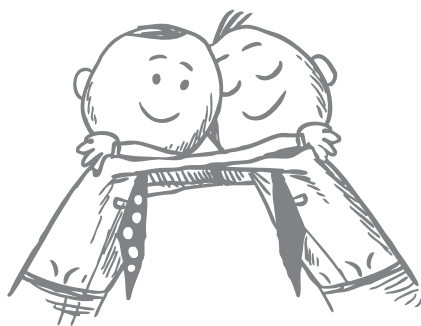
# Employment

Creating pathways to success can involve career counseling and training. The PAA helps individual in forging those pathway by offering them the tools, resources, programs and services which enable them achieve success. Since 1981, the PAA has successfully placed more than 10,000 individuals in full-time jobs. Since 1991, we have been certified by the Illinois Board of Education as a Private Business and Vocational School. Recently the PAA was named as being among the top ten Cook County agencies providing on the job training.

Our Employment Services are offered to both job seekers and providers at no charge. We maintain an extensive job bank and have a dedicated staff of job developers.

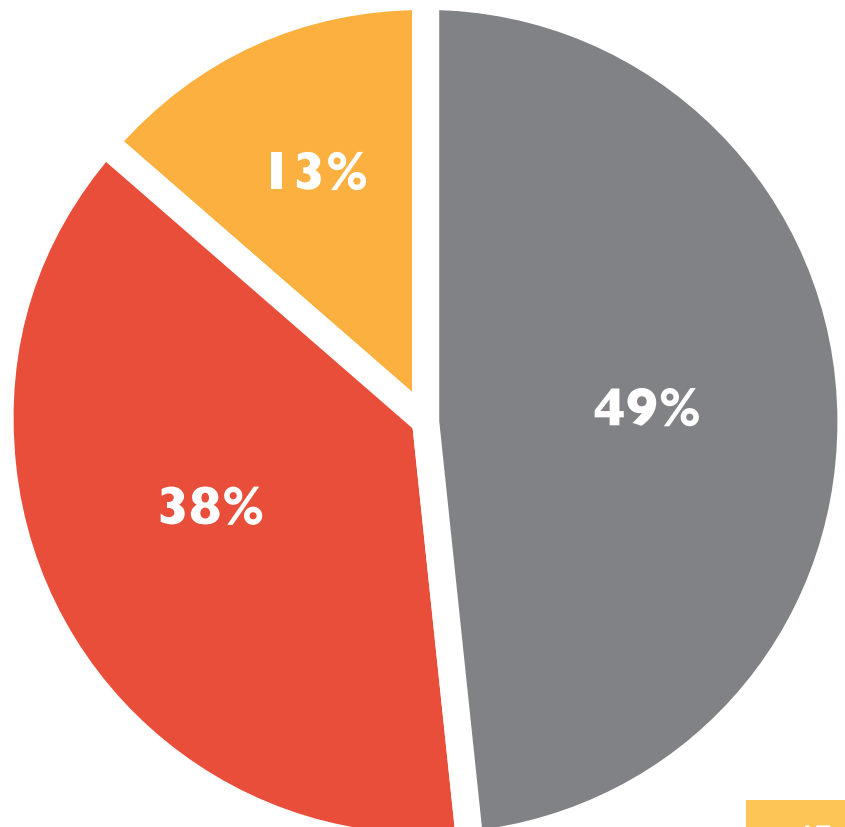
Additionally, the PAA offers resources on making career and job decisions. Our Career Counseling programs help individuals in their job search through individual guidance as well as seminars. In FY'14 we provided job counseling to over 500 individuals.

The PAA also offers classes for those wanting to enter careers in health care and office administration. In addition to vocational classes in office skills, we have well regarded programs in Certified Nursing Assistant (C.N.A.) and Physical Rehabilitation Aide (P.R.A.) training.



## Clients Served:

- Career Counseling
- Vocational Classes
- Employment Placement



15



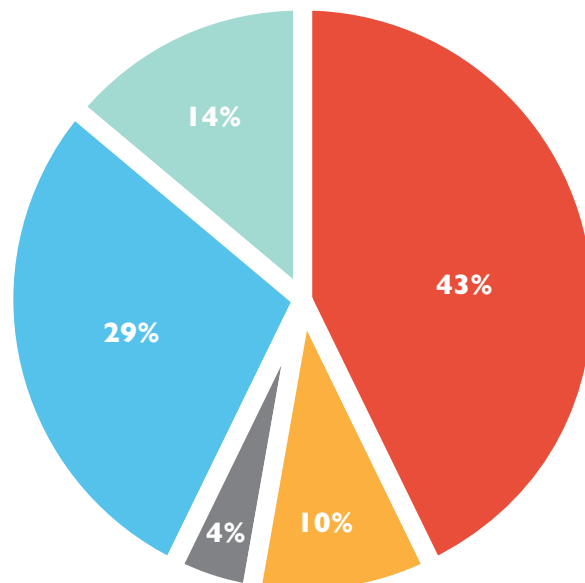
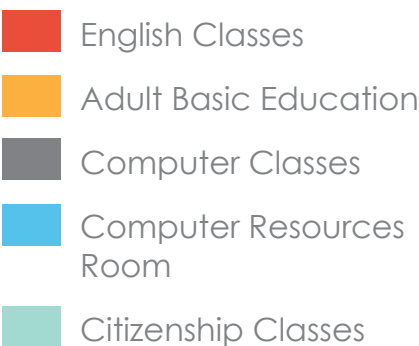
# Education

Creating pathways to success often requires acquiring further education, in particular improved job and language skills. For individuals with limited English language and computer competence, the PAA offers services and programs that enable them to develop those skills and create those pathways.

The PAA assists immigrants by offering English classes, preparation for U.S. Citizenship exams, and opportunities for enhancing their job skills. Through these programs and services, individuals are better able to compete within the job market and thus provide financial stability for themselves and their families.

During FY 2014, the PAA's Education and Employment programs provided over 1,000 individuals with courses in English as a Second Language (ESL) classes and literacy programs. We offered computer classes as well as computer resource labs, enabling individuals to develop and improve their computer skills, conduct job searches, create resumes, and use e-mail.

## Clients Served:





The pathways to success are created through U.S. Citizenship, through the freedom and opportunity offered by civic and economic integration. But obtaining U.S. Citizenship involves counseling and guidance during the process of application, documentation and citizenship classes. While it means overcoming linguistic and cultural obstacles, it is the pathway to success. For these individuals, PAA services can help them create that pathway.

In FY'14, the PAA's Immigration Services helped over 1700 clients. We are the only Polish agency accredited by the National Board of Immigration Appeals of the United States Citizenship and Immigration Services. The PAA Immigration Services staff provides accurate information on citizenship, hosts immigration workshops, and helps streamline the application process. They help clients prepare for the U.S. Citizenship exams, apply for citizenship, adjust immigration status, and complete necessary paperwork to reunite families.

PAA's Housing Resource Center provides individuals with information and services to enable immigrants to enter the home-buying market. Trained counselors provide clients with unbiased, bilingual information and counseling necessary to facilitate knowledgeable and thoughtful home-purchasing decisions as well as rudimentary financial advice.

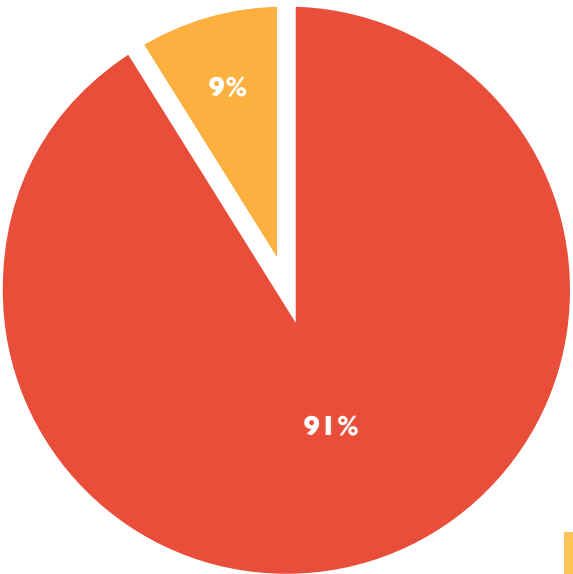
The Housing Resource Center also helps clients with problems such as landlord tenant conflict resolution, lock-outs, evictions, security deposits, retaliation, discrimination, gaining access to affordable housing for persons with special needs.

# Immigration



## Clients Served:

- Immigration Services
- Housing Resource Center



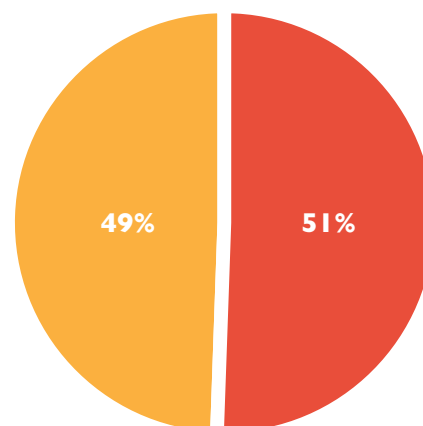
# SOCIAL SERVICES

Creating pathways to success often depend upon receiving supportive help and counseling. Civic and cultural integration to a new country and language are particularly stressful for recent immigrants and their families. Victims of domestic violence, substance abuse, and depression can feel especially alone and isolated. Youth who are coping with a new environment sometimes need assistance and counseling to navigate. Seniors with diminishing resources and support systems need help to maintain their independence and quality of life. For these individuals, PAA services can offer the necessary resources to help them successfully deal with their environment.

During FY 2014, the PAA provided professional support, advice, and assistance to over 4,000 clients through our social services programs. Those programs included crisis intervention; individual and family counseling; counseling and advocacy for victims of domestic violence; partner abuse intervention program; senior services programs; substance abuse treatment and counseling for youth; homemakers program for seniors and people with disabilities; food pantry; clothing closet; emergency energy and rental assistance; outreach and interpretation.

Through these programs, the PAA addressed serious problems affecting the Polish community. By providing holistic, linguistically and culturally sensitive programs and services, the PAA enabled its clients to progress beyond an abusive domestic situation, a crippling addiction, and debilitating mental illnesses as depression. For victims of domestic abuse, the PAA offers crisis intervention, information and referral, individual and group counseling, interpretation and translation, assistance in applying for public assistance and other financial resources including medical and legal advocacy. These programs allow the victims and their families to receive the support they need to escape a violent relationship and find the pathways to success.

Both young and old find assistance. The Homemaker and Senior services assisted elderly clients by providing compassionate professional care, opportunities for community, and essential health screenings. The PAA also offered programs for youth with counseling, substance abuse, and other services.



## Clients Served:

- General Counseling
- Victims of Domestic Violence Counseling/Partner Abuse Intervention

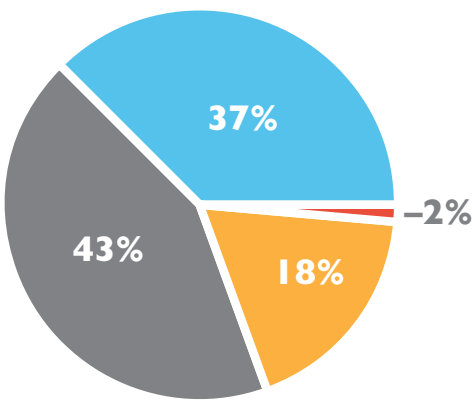


# SUPPORTIVE SERVICES

Creating pathways to success at times begin with providing individuals with the most basic of necessities, giving them access to food, shelter, and adequate health care. For those who lack those essentials, success in obtaining any degree of self-sufficiency seems impossible when facing the day to day struggle of existence. For these individuals, PAA services can help them go beyond their current difficulties and forge a pathway to success

This year, the PAA helped over 700 individuals and families with supplement food through our Food Pantry. Our Turning Point Homeless Shelter offered two daily hot meals, counseling services, and a supportive environment for 70 homeless men, providing them with the resources for changing their lives. Our low-income energy and rental assistance program enabled almost 1900 individuals and their families to maintain adequate housing and utilities.

- Clients Served:**
- Turning Point Homeless Shelter
  - Food Pantry
  - Low-Income Energy & Rent Assistance
  - Outreach & Interpretation
  - Homemaker Services for Seniors





*Resources for Changing Lives*

**Main Office**

3834 North Cicero Avenue  
Chicago, Illinois 60641  
773.282.8206

**Learning Center**

3815-3819 North Cicero Avenue  
Chicago, Illinois 60641  
773.282.1122

**South Side Office**

6276 West Archer Avenue  
Chicago, Illinois 60638  
773.767.7773

**WWW.POLISH.ORG**

Creative Development & Print  
**AND Agency**  
*www.andishere.com*

Copyright © 2015  
Polish American Association