

RETAIL FOR LEASE

# The District at Moreno Valley

HEACOCK AVE. AT 60 FREEWAY, MORENO VALLEY, CA 92557



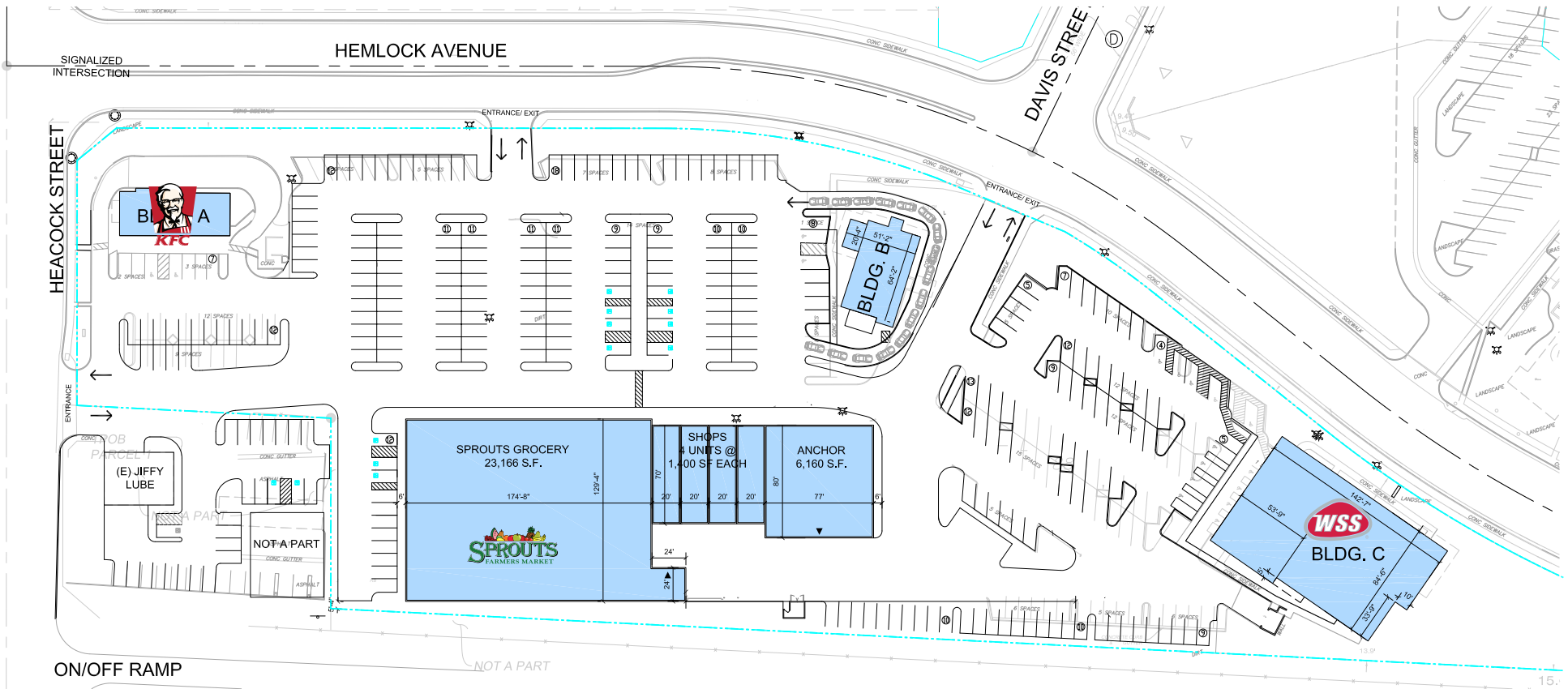
NEWMARK



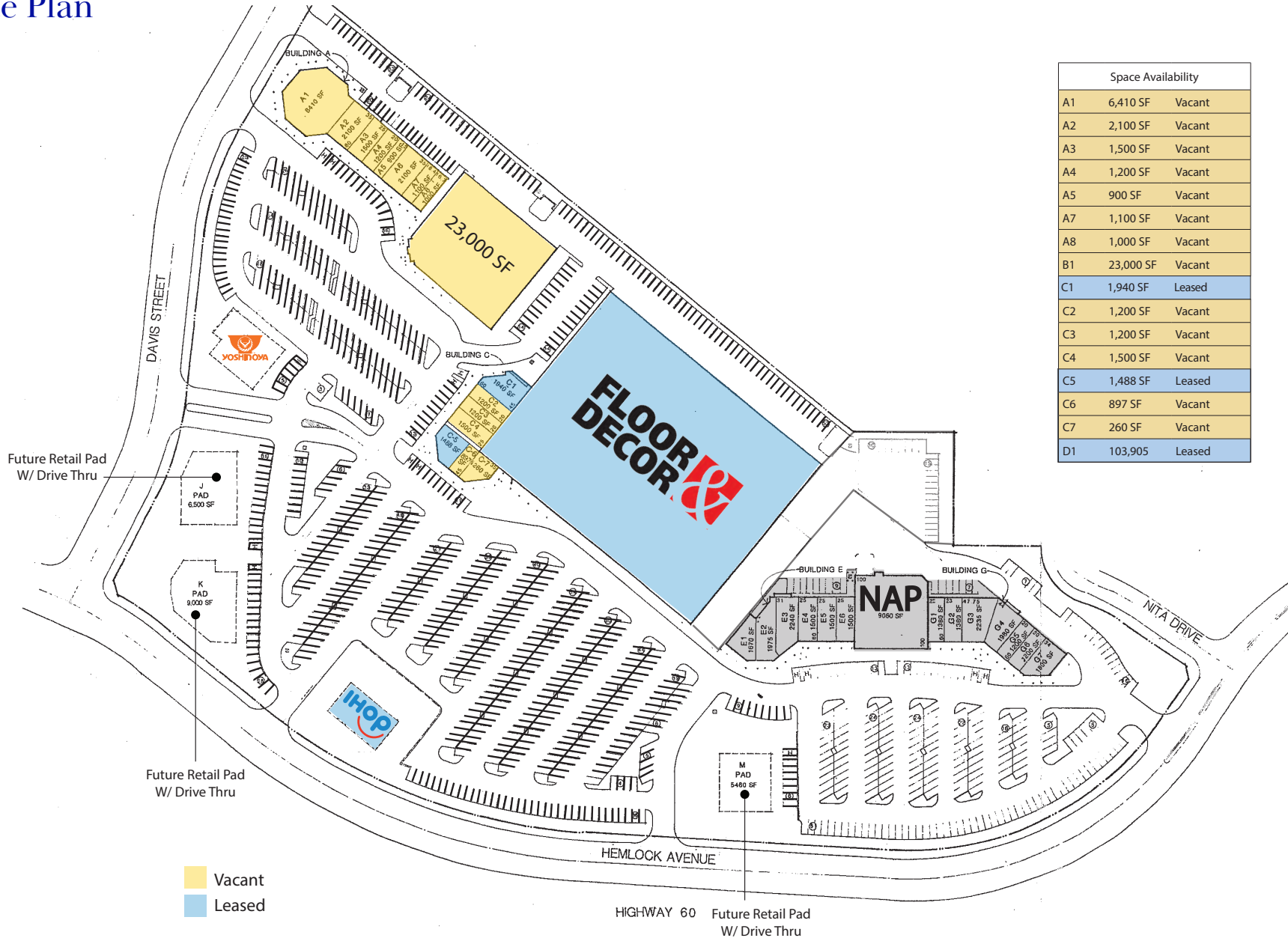
# Site Plan



# Site Plan



Site Plan





## Property Features

- Approx. 30 acre site with 2,500 feet of freeway frontage along Highway 60
- Close proximity to Moreno Valley Mall in the heart of regional retail trade area
- New freeway pylon sign
- Immediate access to the center off of Heacock St. and 60 Freeway
- Property renovation in progress
- New adjacent commercial business park under construction

### CONTACT

**Bryan Norcott**

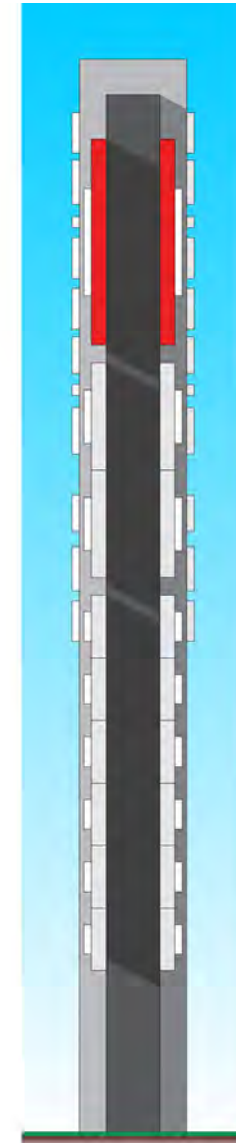
t 213-298-3595  
bryan.norcott@ngkf.com  
CA RE Lic. #01200077

**Dan Samulski**

t 949-608-2064  
dan.samulski@ngkf.com  
CA RE Lic. #01251771



Front View: Freeway Pylon A



Freeway End View: Freeway Pylon A

THE DISTRICT AT MORENO VALLEY

**DEMOGRAPHICS**

	1-MILE	3-MILE	5-MILE
POPULATION	21,749	143,974	220,472
AVERAGE HH INCOME	\$62,078	\$76,306	\$82,147

**TRAFFIC COUNTS**

HEACOCK STREET	33,500 CPD
60 FREEWAY	103,000 CPD



**BOOMING DAYTIME POPULATION**

NEIGHBORING CORPORATE FACILITIES:



**FURTHER DEMOGRAPHICS**

- Avg. population growth rate of over 5.04% annually
- Avg. household income of \$74,823 21,000+ households over \$75,000
- Over 50% of residents in white collar jobs and a highly educated workforce



**NEWMARK**

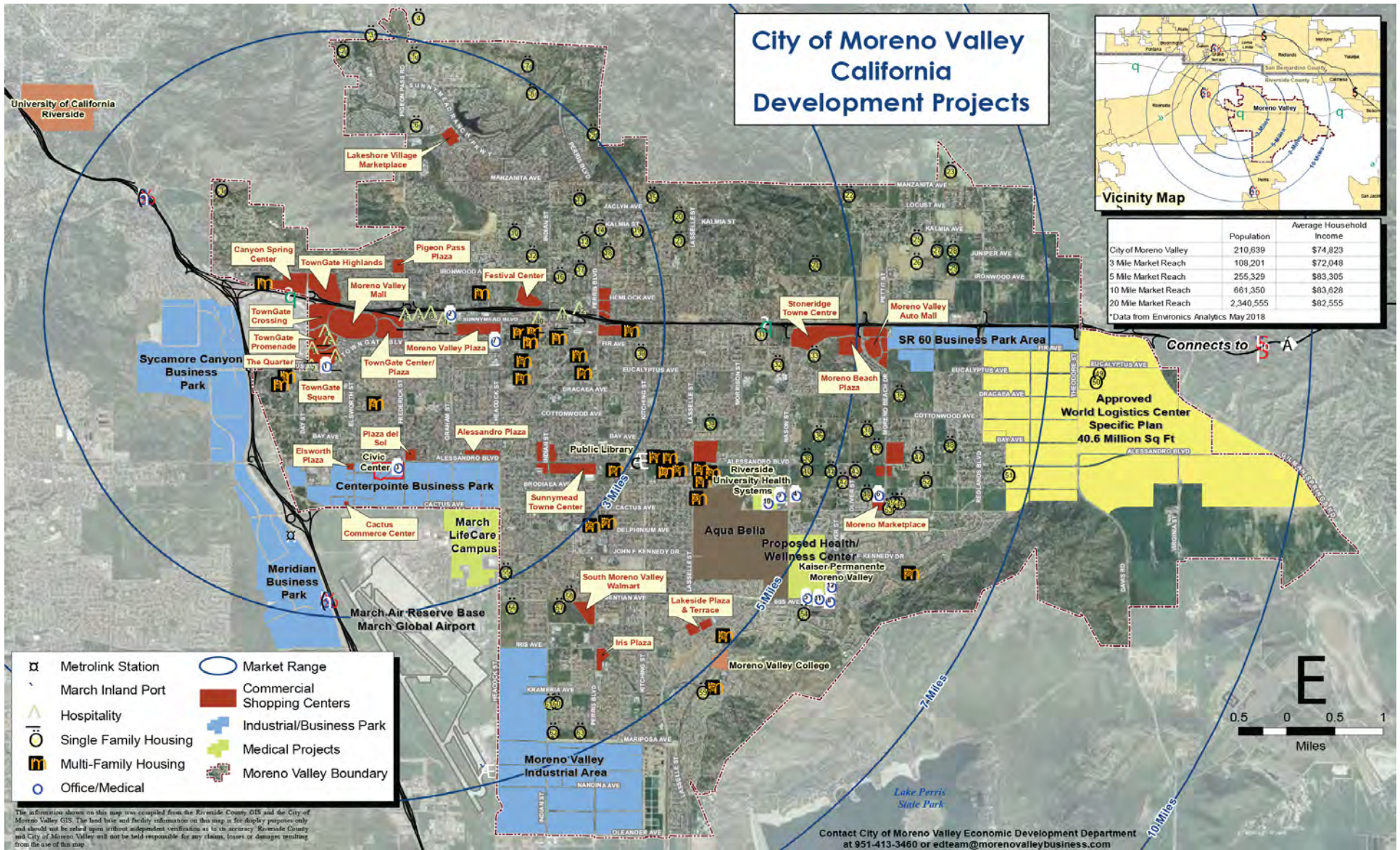


# Aerial





THE DISTRICT AT MORENO VALLEY





# THE DISTRICT AT MORENO VALLEY

## COMMERCIAL development

The City of Moreno Valley is a growing city with a bright future. Strategically located in the Inland Empire of Southern California, with a market area of over two million people and abundant developable land, savvy developers and retailers continue to choose Moreno Valley for growth and success. The City of Moreno Valley is dedicated to fostering new businesses and well-managed growth to create a superb quality of life. *Take a look at what's happening!*



## Commercial Centers

Center Name	Size (sq. ft.)	Traffic Counts (ADT)	
		East/West	North/South
TownGate Highlands	251,900	270,000	24,200
Moreno Valley Mall	1,200,000	270,000	38,000
Stoneridge Towne Centre	579,295	163,000	20,100
TownGate Center/Plaza	465,000	257,000	33,700
Moreno Beach Plaza	350,000	139,000	14,900
Moreno Valley Plaza	341,000	15,300	24,900
TownGate Square	136,000	16,200	38,000
TownGate Crossing	237,000	270,000	38,000
TownGate Promenade	200,000	270,000	36,000
Moreno Beach Marketplace	175,000	8,400	17,300
Lakeside Plaza & Terrace	143,000	18,800	13,300
Lakeshore Village	140,000	9,400	--
Alessandro & Lasselle	140,000	17,500	13,300
Moreno Marketplace	93,788	6,400	15,900
Its Plaza	87,120	18,800	29,300
Elsworth Plaza	30,000	27,700	--
Cactus Commerce Center	16,000	36,100	--
Festival Center	1,327,645	103,000	33,500

## Office/Medical

Map #	Name	Size (sq. ft.)
1	TownGate Square	170,000
2	Olivewood Plaza	22,758
3	Centerpointe Office Area	258,000
4	Moreno Valley Medical Plaza	217,000
5	Moreno Valley Medical Overlay Area	122,250
6	Renaissance Village	98,400
7	Riverside County Office Building	52,000
8	Fresenius Medical Care	12,000
9	Integrated Care Communities	44,000
10	Riverside University Health System Expansion	34,749
11	Kaiser Permanente Moreno Valley Emergency Room Expansion	8,500
12	Mainstreet Post-acute Care	57,000



## Industrial/Job Centers

Areas	Occupied/Leased (sq. ft.)	Available/Approved (sq. ft.)	Proposed (sq. ft.)
Centerpointe Business Park	4,164,577	1,529,382	464,900
Moreno Valley Industrial Area	12,062,022	5,911,961	2,138,594
SR-60 Business Park Area	2,620,887	2,128,498	--
Approved World Logistics Center	--	40,600,000	--
Meridian Business Park	--	--	--

Adjacent to the City of Moreno Valley, two business parks provide additional daytime population utilizing services within Moreno Valley.



## Hospitality Development

Map #	Hotel Name	# Guest Rooms
<b>TownGate Hotels:</b>		
1	Residence Inn	112
2	Holiday Inn Express	104
3	Fairfield Inn & Suites	106
4	Hampton Inn & Suites	115
5	Ayres Suites	127
<b>Sunnymead Area Hotels</b>		
6	La Quinta Inn & Suites	58
7	Travelers Inn	55
8	Country Inn & Suites	64
9	Comfort Inn	92
10	Econo Lodge	51
11	Holiday Inn Express Moreno Valley	153
12	Best Western Moreno Hotel & Suites	59



## RESIDENTIAL development

### New Single-Family Development: 4,672 Units

Map #	Tract	Builder/Applicant	# of Units	Status
1	33522	Kingsid Development	25	Approved
2	29343	Professor's Fund IV	58	Approved
3	32365	Waterman Investm Grp	78	In Process
4	31394	Pigeon Pass Ltd.	78	Approved
5	24203	KB Home	99	Under Construction
6	32515	Lennar Homes - Meadow Creek	148	Under Construction
7	32005	Red Hill Village, LLC	214	Approved
8	33388	SCH Development LLC	15	Approved
9	31592	KB Homes	139	Under Construction
10	32710	Issac Genah	6	Approved
11	32126	Salvador Torres	35	Approved
12	36761	Right Solutions, LLC	7	Approved
13	31621	Victoria Homes- "Skyline"	12	Plan Check
14	35806	Metric Homes	16	Under Construction
15	36983	Construction Specialist Group LLC	53	In Process
16	PEN17-0096	Manuel Ruiz	4	In Process
17	35956	Mr. Salcedo	2	In Process
18	31297	Randy McFarland	7	Approved
19	35262	FDC & Associates	3	In Process
20	31517	Winchester Associates	83	Approved
21	33436	Winchester Associates	105	Plan Check
22	34600	Wolverine Properties	26	Approved
23	31268	Guris Development	23	Approved
24	PA15-0039	Global Investment & DEV LLC	272	In Process
25	32460	Sussex Capital Group	58	Approved
26	33962	Pacific Scene Homes	31	Approved
27	32459	Sussex Capital Group	11	Approved
28	30411	Pacific Communities	24	Approved
29	30998	Pacific Communities	47	Approved
30	34043	RM3 Building and Development	12	Approved
31	33256	Pacific Communities	100	Under Construction
32	31305	RSI	87	Under Construction
33	36933	Beazer Homes	275	Under Construction
34	37060	Maciones Holdings	16	Approved
35	35823	Lansing Companies	562	In Process
36	34397	Winchester Associates	82	Approved
37	32408	Dev West Engineering	50	Approved
38	32645	Winchester Associates	54	Approved
39	31618	Frontier Homes	56	Under Construction
40	32548	Gabel, Cook and Associates	107	Approved
41	32218	Winchester Associates	63	Approved
42	32284	Joe Anderson	32	Approved
43	31590	Mike McKnight Planning Const	96	Approved
44	36882	Frontier Homes	40	Under Construction
45	PEN18-0080	Hakan Buvan	8	In Process
46	PEN18-0154	Michael De La Torre	6	In Process
47	37424	Sid Chan	7	In Process
48	36372	Mottagh Family Trust	25	In Process
49	36719	Kuo Ming Lee	34	In Process
50	35377	Michael Dillard	9	Approved
51	33222	26th Corp	235	In Process
52	PEN18-0053	Cantebury	45	In Process

53	36436	KB Homes	159	Under Construction
54	30268	Pacific Communities "High Pointe" and "Pacific Iris"	83	Under Construction
55	32556	Invermex, Inc.	32	Approved
56	34748	Rados	135	Approved
57	36760	Mission Pacific Land Co	221	Plan Check
58	22180	RSI	140	Under Construction
59	36401	Continental East Fund III, LLC Construction	92	Approved
60	PEN18-0042	Ada Deturcios	2	In Process
61	33024	Adam Wisler	8	Approved
62	32716	Bob Rogers	57	Approved
63	31442	SKG Pacific Enterprises Inc	63	Approved

## New Multi-Family Development: 2,960 Units

Map #	Tract	Builder/Applicant	# of Units	Status
1	35414	Oak Park Partners	266	Under Construction
2	PEN16-0064	Apollo III Dev Grp	18	In Process
3	PA15-0042	Latco SC Inc.	112	Under Construction
4	PA14-0027	Design Concepts	39	Plan Check
5	32215	Winchester Associates "Scottish Village"	194	Approved
6	33771	Jian Qiang Liu	12	Approved
7	PEN16-0066	Gal Choice Inv. Inc.	20	In Process
8	35663	Jimmy Lee	12	Approved
9	PEN16-0060	Frederick Homes	24	In Process
10	31814	Jesse Huizar	60	Approved
11	35369	Tason Myers Property	12	Approved
12	35769	Michael Chen	16	Approved
13	PA09-0006	Jim Nydam	15	Approved
14	35304	Jimmy Lee	12	Approved
15	PEN16-0039	Latco SC Inc.	272	Approved
16	34216	Creative Design Assoc.	39	Approved
17	35429	Creative Design Assoc.	58	Approved
18	35304	Jimmy Lee	24	Approved
19	34681	Perris Pacific Company	49	Approved
20	PEN17-0064	City of Moreno Valley "Boulder Ridge"	141	In Process
21	PA13-0006	Rancho Belago Developers, Inc.	141	Approved
22	PA15-0046	Rocas Grandes	426	Approved
23	PEN16-0123	MV Bella Vista GP, LLC	220	Approved
24	33607	Mo Ghiassi TL Group	52	Approved
25	36708	Nova Homes	122	Approved
26	32142	GHA	62	Approved
27	36401	Continental East	125	In Plan Check
28	PEN16-0130	ROCIII CA Belago, LLC	417	Approved

*In Process = not yet approved by Planning Commission  
Approved = Planning Commission approval  
Plan Check = Approved plus construction documents in review  
Under Construction*



951.413.3460  
edteam@morenovalleybusiness.com  
www.morenovalleybusiness.com



---

# The District At Moreno Valley

HEACOCK AVE. AT 60 FREEWAY, MORENO VALLEY, CA 92557

---

*For More Information Contact:*

**Bryan Norcott**

*Executive Vice President*

bryan.norcott@ngkf.com

t 213-298-3595

CA RE Lic. #01200077

**Dan Samulski**

*Senior Managing Director*

dan.samulski@ngkf.com

t 949-608-2064

CA RE Lic. #01251771

**DTLA Office**

700 S. Flower St., Suite 2500

Los Angeles, CA 90017

**Irvine Office**

18401 Von Karman Ave., Suite 150

Irvine, CA 92612

Corporate License #01355491

The information contained herein has been obtained from sources deemed reliable but has not been verified and no guarantee, warranty or representation, either express or implied, is made with respect to such information. Terms of sale or lease and availability are subject to change or withdrawal without notice.