

SILHOUETTE[®] HEADWALL



RETHINKING
THE HORIZONTAL HEADWALL



CLINICAL BENEFITS

- Standard Silhouette provides up to 10' of services and equipment management capabilities
- Integrated Channels for equipment management and storage management
- Organizes the bedside environment to provide more clinical function. Clinical Accessories such as Diagnostic Equipment, Monitors, storage systems and more attach directly to the headwall.
- Ergonomic placement of electrical services and medical gas outlets
- Clinical design flexibility
- Designed for High and Low Acuity

THE SILHOUETTE®

A THOUGHTFUL SOLUTION FOR THE BEDSIDE ENVIRONMENT.

SECTIONAL / SPLIT SILHOUETTE®



SINGLE TIER SILHOUETTE®

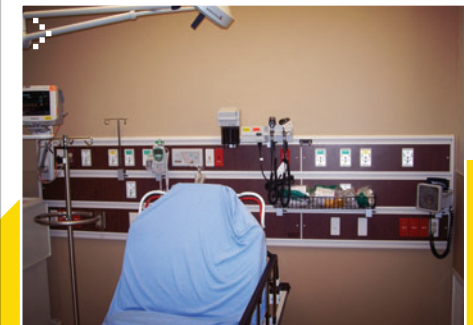
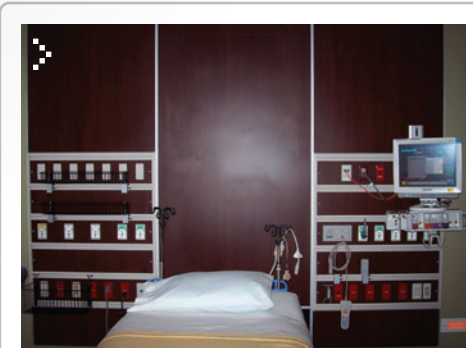


DOUBLE TIER SILHOUETTE®



APPLICATIONS

- INTENSIVE CARE AREAS
- PACU
- NICU
- ED/TRAUMA
- PATIENT ROOMS



ROOM EXAMPLES

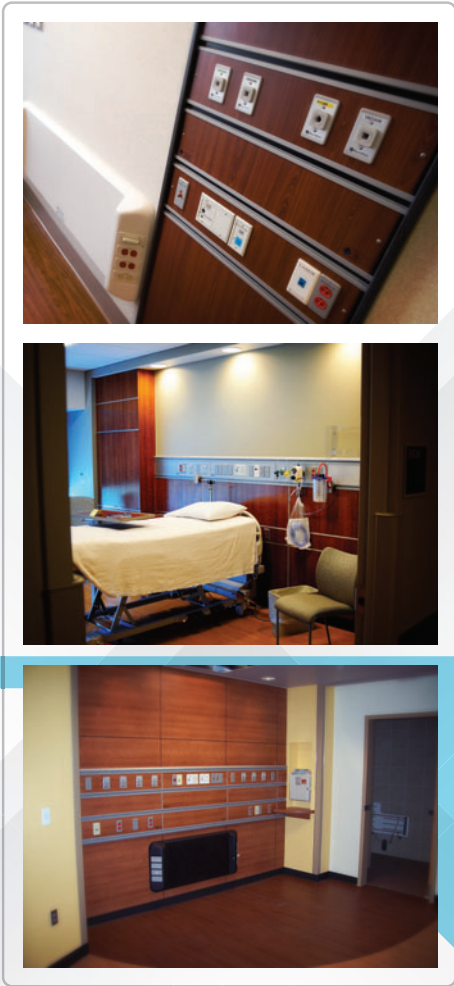


AESTHETIC DESIGN

The Silhouette® unites clinical function with aesthetic design to increase productivity for the nursing staff. The Silhouette® will contribute to any interior design scheme with a wide variety of laminate choices.

PANEL SYSTEM OPTION

Create a unique look for your facility by adding panel walls.



ROOM EXAMPLES





➤ INSTALLATION

PRODUCT FEATURES

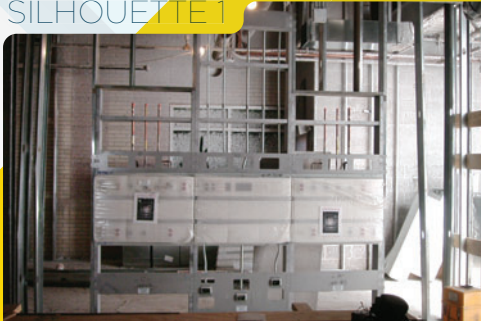
- **SILHOUETTE 1**
Horizontal Headwall pre-piped and wired with specified studs attached
- SILHOUETTE 3**
Horizontal Headwall pre-piped and wired with no studs attached, header only
- The Silhouette is recessed into the wall, only protruding 1.25 inches from the wall
- Provisions for nurse call and code blue button
- Integrated Channel for Equipment Management - Powder Coated Finish



INSTALLATION OPTIONS

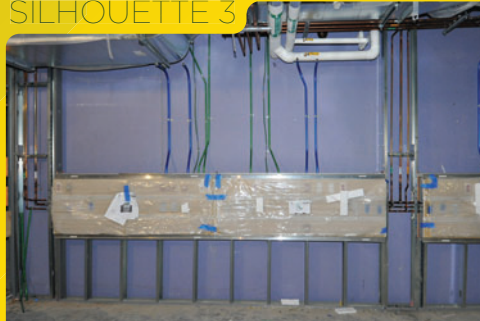
For ease of installation and to provide contractors with the best option that fits the needs of each room, Modular Services Company offers two different installation options.

SILHOUETTE 1



The Silhouette 1 is delivered to the job site in three vertical sections, with an integral rough-in designed to reduce installation time. The vertical sections interlock easily and are completely pre-wired with service connections terminating above the accessible ceiling line.

SILHOUETTE 3



The Silhouette 3 is installed into a framed opening in the stud wall. Jobsite personnel insert the headwall into the opening, drop service provisions to the unit, and make service connections. After required verifications, drywall (and additional wall covering if required) is installed. The housing is secured to the rough-in frame, and the trim kit is installed.



WHAT WE DO

Modular Services Company is a medical products design company that creates, manufactures and services advanced prefabricated products: Medical Headwalls, Footwalls, Sinkwalls, Fixed/Movable Columns, Movable Boom Systems and more. Our products are designed to be user-centric and meaningful. We strive to increase functionality for the clinical staff in the bedside environment. We offer smart, high design/aesthetic options for the design team and manufacture systems that make construction of the patient space both simple and efficient.

For more information about Modular Services Company and the products we create, please visit www.modularservices.com.

500 E Britton Rd • Oklahoma City, OK 73114 • 800.687.0938 • FAX 405.528.0368 • www.modularservices.com

© Modular Services Company. ALL RIGHTS RESERVED

DCN# 70-1014 - Rev. 01/2015

