

TODAY'S SCHEDULE

HR	7:30 – 7:39
Period 6	7:42 – 8:33
Period 5	8:36 – 9:32
RESOURCE	9:35 – 10:10
Period 4	10:13 – 11:07
Period 3	11:10 – 12:04
LUNCH	12:04 – 12:34
Period 2	12:37 – 1:31
Period 1	1:34 – 2:30

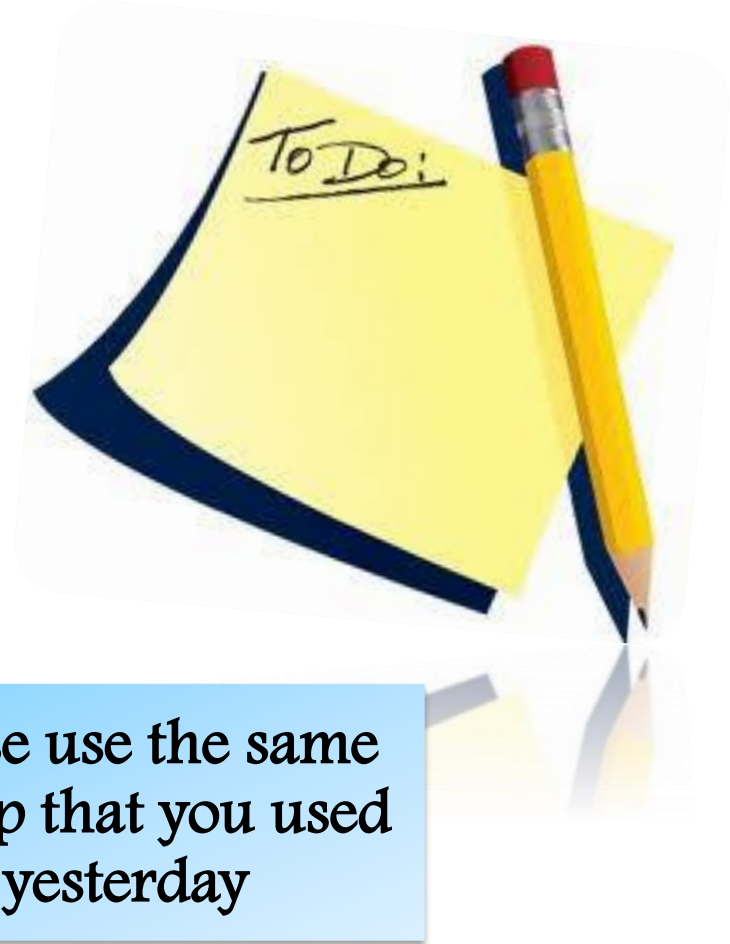
Thursday, May 19, 2016 **To Do Today:**

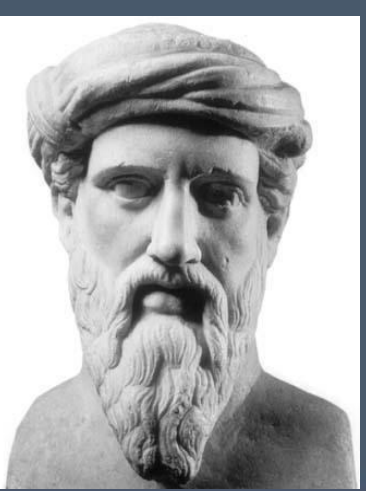
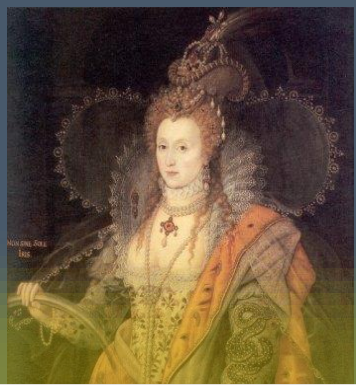
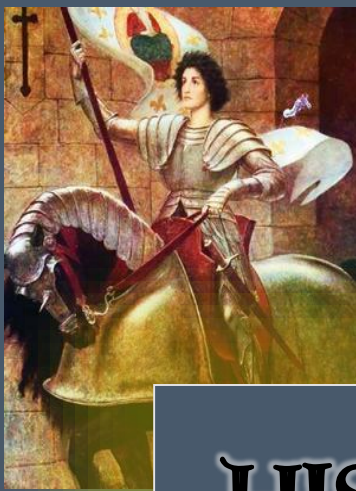
Review **Visual Aid**
Information
and **Speech** Information

Begin working
on a rough draft
of your speech

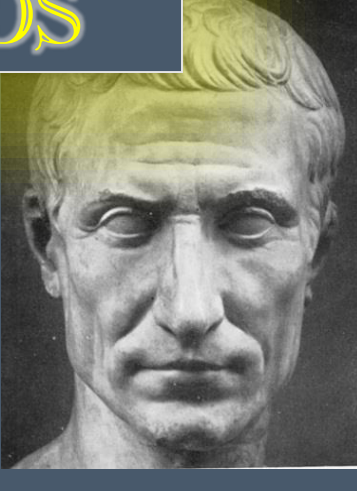
Continue to add
to your research
if you have to

Please use the same
laptop that you used
yesterday





HISTORICAL
PERSON
OF THE
YEAR
VISUAL AIDS



VISUAL AID CRITERIA

The Central Bucks rubric for the *Historical Person District Assessment* states: (in order to be “Advanced”)

- **Visual aid, props, and costume are appropriate and exhibit exceptional quality and effort.**
- **Use of visual aid, props, and costume significantly enhance the presentation.**

Therefore, not only must your visual be well made, you must also somehow incorporate it into your speech! (*Explain it; refer to it, use it somehow. Don't just put it up behind you and ignore it!*)

WHAT WOULD MAKE A GOOD VISUAL AID?

HERE ARE SOME EXAMPLES

- A poster/trifold that displays all of your accomplishments
- A Power Point presentation with one slide per major section of your speech (*Intro, Background, Accomplishments, Impact, Conclusion*) Power Points should be no longer than 5 slides!
- A diagram illustrating an invention you created
- A flow chart that shows your family tree and how you became King or Queen
- A map or series of maps showing locations you refer to in your speech

Check out the two “William Shakespeare” Power Points on Mr. Saska’s District Assessment page to see a “good” example and a “bad” example

APPROPRIATE VISUALS

ARE:

Tools to enhance your speech

Meant to include a small amount of text

Meant to help the audience to gain a better understanding of your impact/accomplishments

Meant to be used somehow in your speech

ARE NOT:

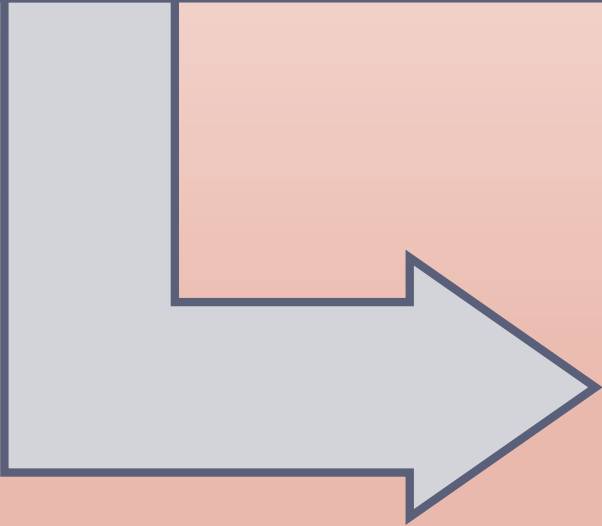
PowerPoints of your entire speech

All words

Supposed to serve as the “background” of your speech

You must use your visual during your presentation

IMPORTANT



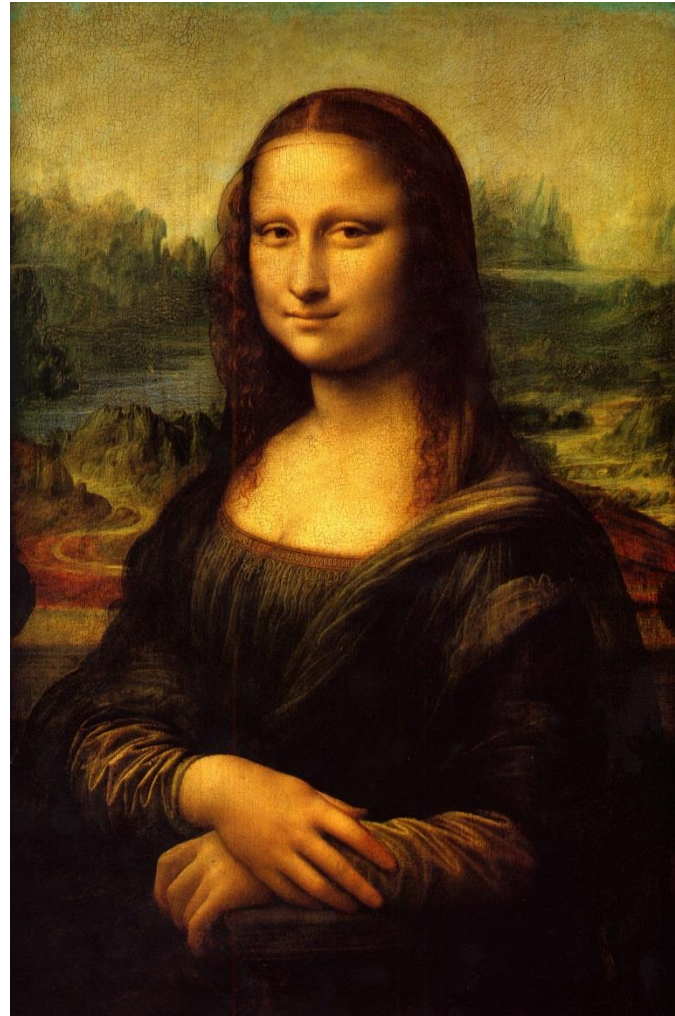
Example: If your visual is a map, refer to it and show important locations, don't just have it sitting behind you

Is this slide good or bad? Why?

DA VINCI'S ACCOMPLISHMENTS

◎ The Mona Lisa

- Painted in 1503-1506
- One of da Vinci's greatest works



Da Vinci's Accomplishments

- The *Mona Lisa* (*La Gioconda* or *La Joconde*) is a half-length portrait of a woman by the Italian artist Leonardo da Vinci, which has been acclaimed as "the best known, the most visited, the most written about, the most sung about, the most parodied work of art in the world.
- The painting, thought to be a portrait of Lisa Gherardini, the wife of Francesco del Giocondo, is in oil on a poplar panel, and is believed to have been painted between 1503 and 1506. It was acquired by King Francis I of France and is now the property of the French Republic, on permanent display at the Musée du Louvre in Paris since 1797. The ambiguity of the subject's expression, which is frequently described as enigmatic, the monumentality of the composition, the subtle modeling of forms and the atmospheric illusionism were novel qualities that have contributed to the continuing fascination and study of the work



Is this slide good or bad? Why?

THE SPEECH

- Must be 3 to 5 minutes long~ *You will lose points if you are under 3 minutes or over 5 minutes!*
- The objective is to persuade the audience that you are the most significant figure in history
- It must be written in the first person
- You must turn in a typed copy of your speech before you present
- You may use index cards during your presentation
- Note: A typical 3 minute speech is about 4 pages double spaced, size 12 font

Check out the example speech on Abraham Lincoln on Mr. Saska's website to get an idea of how a finished speech should look

THE SPEECH

Your speech should be organized into the following sections:

INTRODUCTION

BACKGROUND

ACHIEVEMENTS

IMPACT

CONCLUSION