



# Reykjavik

*Carol Sunday*

**Finished Size:**

7" palm circumference, to fit a woman.

**Gauge:**

32 sts and 38 rows = 4" in St st.

**Yarn:**

Sunday Knits 3 ply yarns including: Nirvana (merino & cashmere), Angelic (merino & angora), Eden (merino), and/or Brigadoon (merino tweed):

1 skein (246 yd / 225 m per 50 g) each of: main color for hand (MC-1) and contrasting color (CC)

1 mini skein (99 yd / 90 m per 20 g) each of: main color for cuff (MC-2) and highlight color (HC) for Latvian braid.

Substitute any wool or wool blend yarn that works well to gauge.

**Needles:** Size 2 / 2.75 mm: set of 4 or 5 double-pointed (dpn) or circular needles. Adjust needle size if necessary to obtain the correct gauge.

**Notions:** Stitch markers, stitch holder, tapestry needle.

**Skills needed:** Reading charts, stranded colorwork.

**Pattern includes:** Written instructions, colorwork pattern in charted format only.

Classic nordic mittens with Icelandic inspiration and Latvian braids.  
The thumb shaping is part welt, part flap for a lovely fit.



**Construction:** Mittens are worked in the round from cuff to top.

# Reykjavik

## INSTRUCTIONS FOR MITTENS

CUFFS (work the same for both mittens)

**With** CC CO 56 sts. Distribute sts over 3 or 4 dpns, pm, join for working in the round.

**Work** St st for 8 rnds.

**Latvian braid** - next 3 rnds

**1st braid rnd:** \*K1 in MC-1, k1 in CC; rep from \* to end.

**2nd braid rnd:** With both strands in front \*p1 in HC, hold HC strand up towards needle tips bringing CC strand up from underneath, p1 in CC, hold CC strand up towards needle tips bringing HC strand up from underneath; rep from \* to end. Note: the 2 strands will become rather tightly twisted by the end of this round, but will unwind as the next round is worked.

**3rd braid rnd:** With both strands in front \*p1 in HC, hold HC strand down away from needle tips bringing CC strand up from the top, p1 in CC, hold CC strand down away from needle tips bringing HC strand up from the top; rep from \* to end.

**Next rnd:** With MC-2 knit to end.

**Next rnd:** Knit to last 2 sts, k2tog. 55 sts.

**Beg** at Rnd 1 work Right Cuff Chart for right mitten and Left Cuff Chart for left mitten, reading from right to left.

Cont with chart through Rnd 4.

**Rnd 5:** K1, LLI, k23, LLI, knit to end. 57 sts.  
Work chart Rnds 6-20.

**Next rnd:** With MC-2 knit to end.

**Right mitten only:**

**Next rnd:** K2tog, knit to end. 56 sts.

**Left mitten only:**

**Next rnd:** Knit to last 2 sts, k2tog. 56 sts.

**Both mittens:**

**Next 3 rnds:** Work Latvian braid as for bottom of cuff.

**Next 2 rnds:** With MC-1 knit to end.

## RIGHT MITTEN - HAND

**Beg** on Rnd 1, in MC-1 and CC work Right Hand Chart followed by Right Thumb Chart.

**Work** chart Rnds 2-3.

**Rnd 4:** Work hand chart; following thumb chart M1-R, work to last st, M1-L. 58 sts.

**Cont** to work charts through Rnd 24 inc'ing for thumb where indicated by M1-R on the right and M1-L on the left. 72 sts.

**Rnd 25:** Work hand chart only.

**Rnd 26:** Following hand chart k1 (St 1), place 21 thumb sts on holder or waste yarn, CO 5 sts using backward loop method and following chart Sts 2-6 while twisting strands between CO sts, join and work chart Sts 7-56. 56 sts rem on needles.

**Cont** to work hand chart through Rnd 59.

**Rnd 60:** Work Sts 1-25, k2tog in St 26, pm, knit Sts 28-56. 55 sts.

**Next rnd - Dec Rnd:** Following chart ssk (St 2 this rnd), work to 2 sts before m, k2tog (St 25 this rnd), k1 (St 28 every rnd), k2tog (St 30 this rnd), work to last 3 sts, ssk, k1. 4 sts dec'd.

**Rnds 62-69:** Work as for Dec Rnd.

**Place** Sts 38-46 on one needle and the rem sts on a second needle for grafting.

**Cut** MC-1 to 24" / 60 cm and with tapestry needle and using Kitchener stitch graft top front to back beg with St 56 and ending with St 28.

## RIGHT MITTEN - THUMB

**Place** 21 thumb sts on needle and work Right Thumb Chart Rnd 25 over 21 sts; cont with chart pick up and knit 2 sts between thumb welt and cast-on edge, pick up and knit 6 sts along cast-on edge, pick up and knit 2 sts between cast-on edge and thumb welt. 31 sts.

**Work** thumb chart through Rnd 43.

**Rnd 44:** Cont in chart k7, ssk, k3, k2tog, cont in chart to end. 29 sts.

**Rnd 45:** \*K1 in MC-1, [ssk, k1, k2tog] in CC; rep from \* 3 more times; k1 in MC-1, [ssk, k2] in CC. 20 sts.

**Rnd 46:** \*K1 in CC, [k2tog, k1] in MC-1; rep from \* 4 more times. 15 sts.

**Rnd 47:** With MC-1 k2tog, k1, k2tog, ssk, [ssk, k2tog] twice. 8 sts.

**Cut** MC-1 strand to 24" / 60 cm, thread MC-1 onto tapestry needle and run through each st purlwise leaving sts on needles, draw strand inside and secure; cut CC strand, draw inside and secure.

## LEFT MITTEN - HAND

**Beg** on Rnd 1, in MC-1 and CC work Left Thumb chart followed by Left Hand chart.

**Work** chart Rnds 2-3.

**Rnd 4:** Following thumb chart M1-R, work 5, M1-L; work Left Hand chart. 58 sts.

**Cont** to work charts through Rnd 23 inc'ing for thumb where indicated by M1-R on the right and M1-L on the left. 70 sts.

**Rnd 24:** Work thumb and hand charts through St 51, place 21 thumb sts on holder or waste yarn, CO 5 sts using backward loop method and following chart Sts 52-56 while twisting strands between CO sts. 56 sts rem on needles.

**Rnd 25:** Join with rem of hand and work Sts 2-57.

**Cont** to work hand chart through Rnd 59.

**Rnd 60:** Knit Sts 2-29, pm, knit Sts 30-55, k2tog in St 56. 55 sts.

**Next rnd - Dec Rnd:** Following chart k1, ssk (St 4 this rnd), work to 2 sts before m, k2tog (St 28 this rnd), k1 (St 30 every rnd), k2tog (St 32 this rnd), knit to last 3 sts, ssk. 4 sts dec'd.

**Rnds 62-69:** Work as for Dec Rnd.

**Place** Sts 12-20 on one needle and the rem sts on a second needle for grafting.

**Cut** MC-1 to 24" / 60 cm and with tapestry needle and using Kitchener stitch graft top front to back beg with St 2 and ending with St 30.

## LEFT MITTEN - THUMB

**Following** Left Thumb Chart Rnd 25 and beg where left hand front meets thumb welt, pick up and knit 2 sts between welt and cast-on edge, pick up and knit 6 sts along cast-on edge, pick up and knit 2 sts between cast-on sts and welt, place 21 thumb sts on needle and work over last 21 sts of chart. 31 sts. **Work** thumb chart through Rnd 43.

**Rnd 44:** Knit chart Sts 1-16, ssk, k3, k2tog, cont in chart to end. 29 sts.

**Rnd 45:** [K2, k2tog] in CC; \*k1 in MC-1, [ssk, k1, k2tog] in CC; rep from \* 3 more times; k1 in MC-1. 20 sts.

**Rnd 46:** \*[K1, k2tog] in MC-1, k1 in CC; rep from \* 4 more times. 15 sts.

**Rnd 47:** With MC-1 [ssk, k2tog] twice, k2tog, ssk, k1, ssk. 8 sts.

**Cut** MC-1 strand to 24" / 60 cm, thread MC onto tapestry needle and run through each st purlwise leaving sts on needles, draw strand inside and secure; cut CC strand, draw inside and secure.

## ABBREVIATIONS

beg: begin(ning)

BO: bind off

CC: contrasting color

CO: cast on

cont: continue

dec: decrease

dpn(s): double-pointed needle(s)

HC: highlight color

inc('ing): increase('ing)

k: knit

k2tog: knit 2 stitches together (1 stitch decreased)

LLI: left lifted increase - with left-hand needle, pick up stitch 2 rows below stitch just worked, and knit into it (1 stitch increased)

m: marker

M1-L: make 1 left slant - with left needle tip, lift strand between needles from front to back, knit lifted loop through the back (1 stitch increased)

M1-R: make 1 right slant - with left needle tip, lift strand between needles from back to front, knit lifted loop through the front (1 stitch increased)

MC: main color

p: purl

pm: place marker

rep: repeat

rnd(s): round(s)

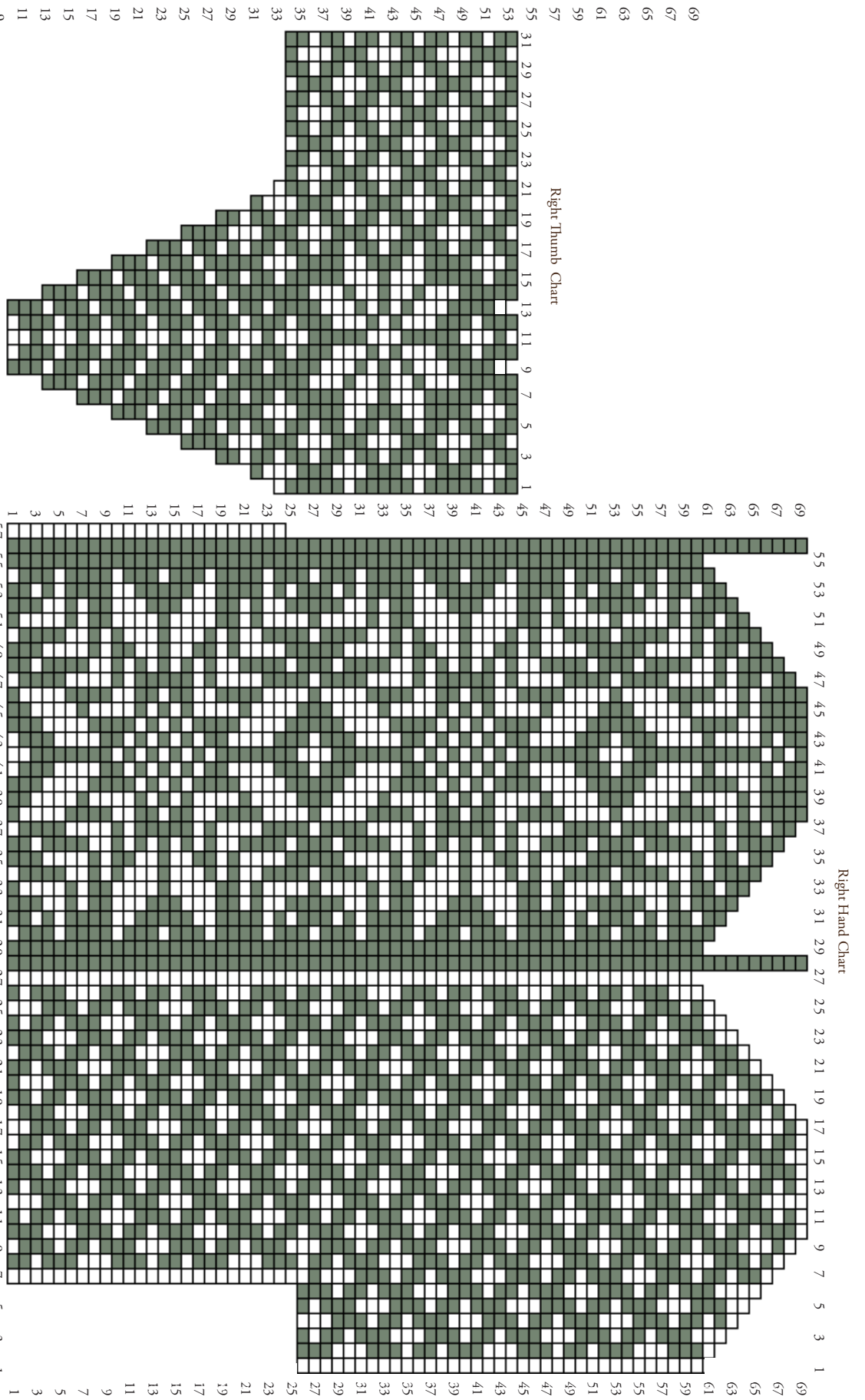
ssk: slip 2 knitwise individually, insert left needle knitwise into 2 slipped stitches, knitting those 2 stitches together (1 stitch decreased)

st(s): stitch(es)

St st: stockinette st

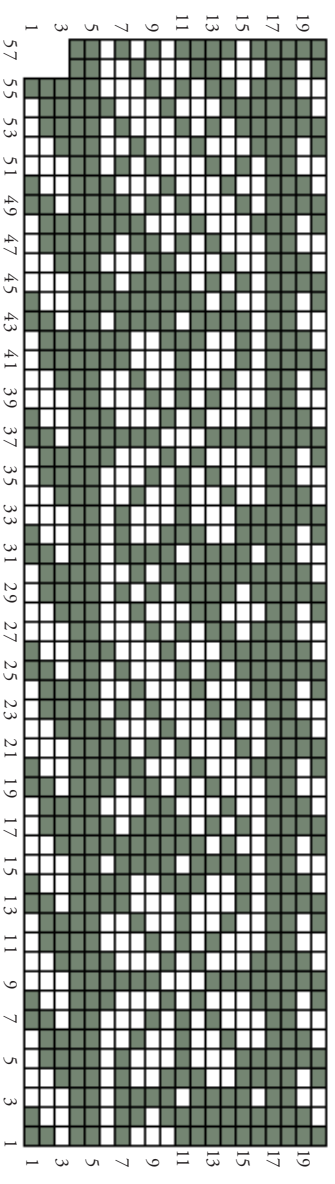
for more information contact

Sunday Knits  
240 Lovesee Rd  
Roscoe, IL 61073  
carol@sundayknits.com  
www.sundayknits.com

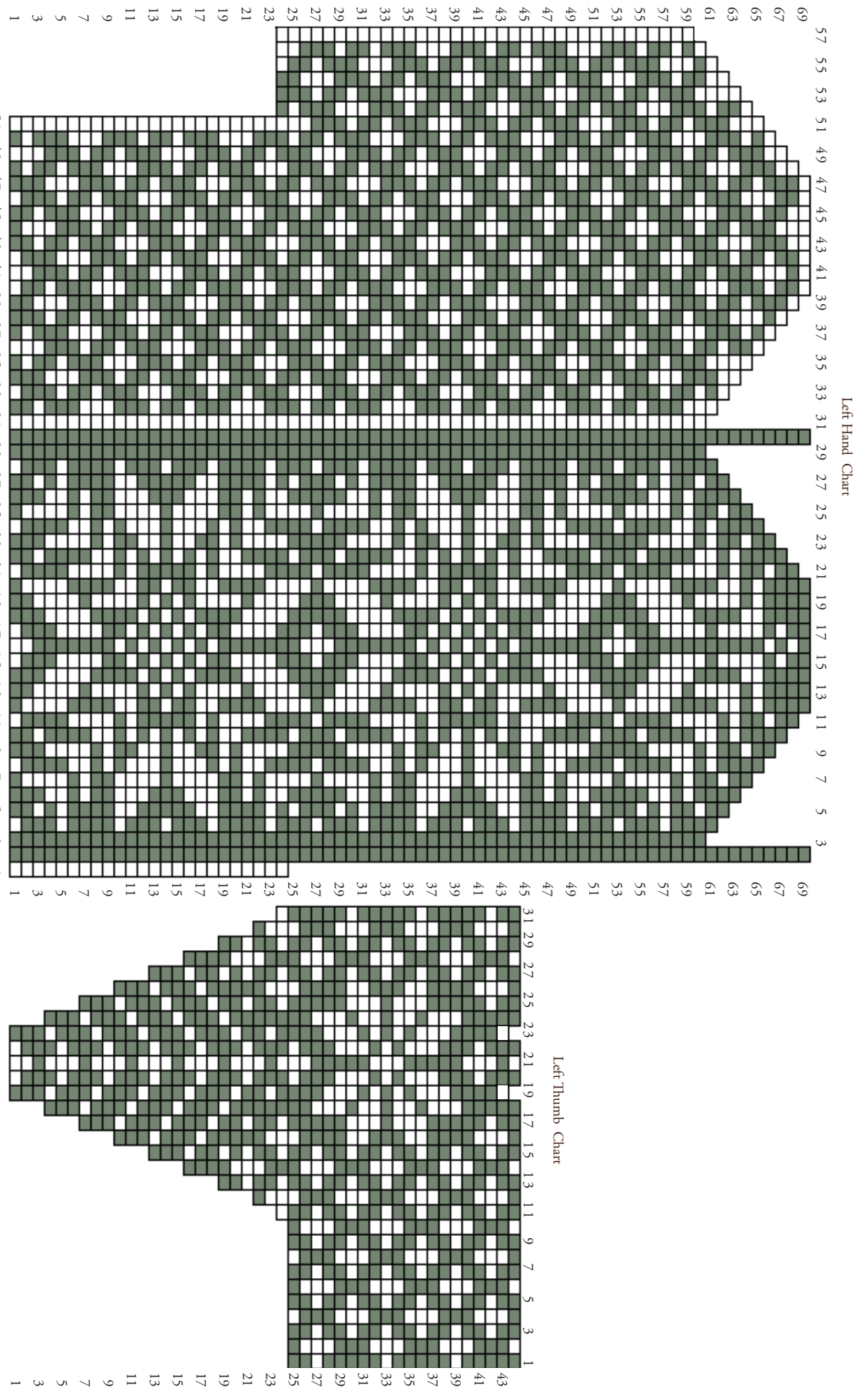


- Key
- MC
  - CC

Note: Read charts from right to left.







Reykjavik design and photography by Carol Sunday. Edited by Sandra Whittaker. Modeled by Rebekah Smith.