

IN-HOUSE



PRODUCTION

Phone (702) 631-4748

RIGGING CATALOG
2014

Catalog 6-14

www.ihplabor.com

6620 W. Arby Ave, Las Vegas, NV 89118

ABOUT US AND OUR SERVICES

Founded in 2001, In-House Production, (IHP) started as a Labor Provider, providing qualified labor for Trade Shows, Industrials, Theatres, Conventions, Construction and Outdoor Events. Keeping with its roots as a labor provider, IHP has become a leading, manufacturer, distributor, rigging and staging rental house, providing products and solutions in the Las Vegas area. Combined together (our IHP Labor Service and IHP's Rigging & Staging Rental Solutions) we have all your needs under one roof.



IHP carries some of the top named brands, such as: *Total Structures, Tomcat, Fiber-Tech Round Slings, Chicago Hardware, CM Rigging Products, AMC Fabrication Hardware, DBI-Sala and UltraSafe Fall Protection, CM and Chain Master Chain Hoists, Skjonberg, Applied Electronics, Show Distributions Motor Controls Grip Lock System, and The Light Source (mega-couplers)* to name a few. IHP believes in using Domestic rigging hardware products whenever available.

Within our shop, we are able to design, layout and build those special rigging and staging custom parts. We have the space to erect, and test, before taking the piece/s to the job-site for final installation. Working with certified welders and structural engineers, we are able to make your vision a reality!

SEE WHAT WE HAVE TO OFFER



6620 W. Arby Ave.
Las Vegas, NV 89118
(702) 631-4748 www.ihplabor.com

INDEX

Symbols

A

Aircraft Cable 26
Aluminum
 I-Beam 23
 Trolley 23
AMC Fabrication, Inc.. *See*
 also Pulleys; *See also* Trolley

B

Base Weights 15, 16
Beam Clamps. *See* Rigging
Block Division, Inc.. *See* Pulleys

C

Chain Hoist
 Chain Master 20
 Columbus McKinnon 20
 Manual Chain Hoist 21
 Ratchet Lever Hoist (Come-A-Long) 21
Chain Motor Control 34
 Pendant 33
Chairs
 Chairs. *See* Staging, Chairs
Cheeseboro 18
Clamps 36
 Mega 25
 Pro-Banner 36. *See* Specialty Rigging
 Pro-Pipe 36. *See* Specialty Rigging
 Pro-Safety 36. *See* Specialty Rigging
 Pro-Screen 36. *See* Specialty Rigging

CMI Corporation. *See* Pulleys
Custom Fabrication 47-48
 Arbor Assist Change-Over Winch 48
 Furniture Dolly, Dolly 40, 47, 52
 Hanging TV Stand 48
 Heavy Duty Stackable Storage 47

D

Display Systems
 Pipe & Drape 45
Dolly
Catalog 6-14

Furniture Dolly 40
Heavy Duty Dolly 40
Stand Up Truss Dolly 40
Truss Stacker and Dolly 40

E

Electrical
 Cable
 Fly Cable 32
 Cam-Lock Adapters 29
 Power Distribution 30, 31

F

Furniture Dolly 40
Furniture Dolly, Dolly 40, 47, 52

G

Gallager Staging
 GBLOCKS 16
Griplock System 35

H

Imagineering 49, 50, 51, 52, 53, 54

J

K

L

M

Music Stand 43

N

Nutech Industries. *See* Power Distribution

O

P

Pear-Forged Carbon Steel Rings.
 See Rigging Hardware
Pipe Pecker 19
Power Distribution 30
Pulleys 28

Q

R

Rescue Systems, Inc.. *See* Pulleys
Rigging
 AirWall 25
 Beam Clamps 24
 Hardware 22
 Pulleys 28
 Slings
 Aircraft Cable 26
 GAC Flex 27
 Polyester Round Sling 27

S

Sand Bags 43
Scaffold
 Leveling Jack 39
Screw Pin Anchor Shackles.
 See Rigging Hardware
Skjonberg Controls, Inc.
 See Chain Motor Control
SMC Russ Anderson. *See* Pulleys
Specialty Rigging 36
 Pro-Pipe 36
 Pro-Safety 36
 Pro-Screen 36
STAC Chain. *See* Rigging Hardware

Staging

Chairs 42
Click-Pipe 46
Dolly 40
Platforms 37
 Casters 37
 Kick Rail and Bracket 38
 Legs 37
 Railings 38
 Skirting 38
 Stairs 39

Tools 44

 Cross Grid Connector 44
 Grid Pipe/Spreader Pipe 44
 Pipe Clamp 44
 Rope Lock 44

Steel

 Pipe 18, 19

T

Trolley 23
Truss
 12" x 12" 5
 Black Ladder Truss 5
 Black Truss 5
 Ground Support

 Base Plates 15
 Illustration 16, 17
 Tower 14
 Tower Head Block 6
 Tower Hinge 14
Plated Aluminum 5
Plated Aluminum Corner Block 5
Round Circle
 Black 11
 Silver 11
Steel Articulating Hinge 7
Steel Corner Block 7
Steel Wedge 7
20.5" x 20.5" Medium Duty Aluminum Angled Corner Block 9
Pickup Bar 12
Round Circle
 Silver 11
Steel Pickup Bar 12
Truss Hanger 13
Pre-Rig 10
 26" x 30" Plated
 93" Long Section 10
 Corner Block 10
Specialty Items
 20.5" x 20.5" Hinge 9
 Gallager Staging GBLOCKS 16
 Grapple 13
 Steel Enclosed Concrete Filled Base Plate Weights 16
 Truss Adapter 9
 Truss Sleeve Block 9
V-Tower 4

U

V

V-Tower. *See* Truss, V-Tower

W

Wardrobe Rack 42

X

Y

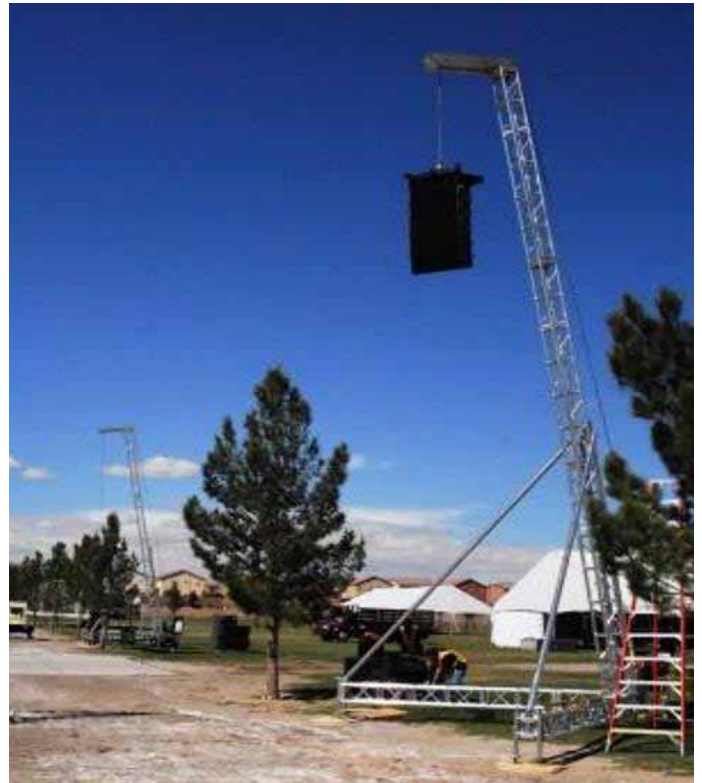
Z



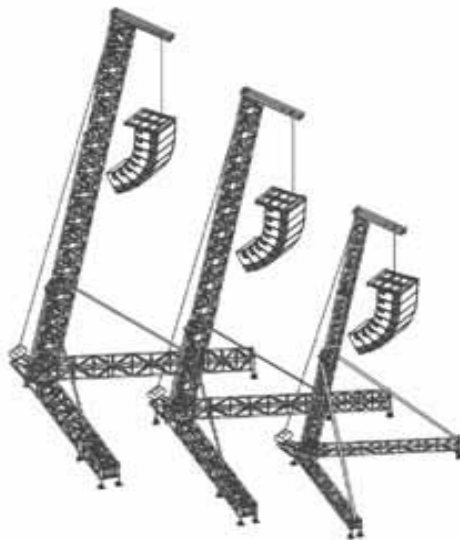
SKY HOOK TOWER

TOTAL STRUCTURES V-TOWER

When that special day arrives and you absolutely have to hang something; Speaker, Video Wall, Truss, or You name it, and the only thing to hang from is "AIR", what do you do - **call In-House Production.**



SKY-HOOK is **In-House Production's** solution for suspending your product anywhere and we mean anywhere: pools, parks, yards, convention space, lakes, rivers, race tracks, deserts, orchards, ball parks... **Anywhere!**



Total Structures Designed V-Tower (Sky-Hook) as a single point lifting device. Main design is to lift Audio Array Speakers, or any speaker cabinet, or a number of other lifting uses, to a height of 30'. Sky-Hook has 3 designed lifting points. Closest pick-point to the tower can lift **1,800lb.**, middle pick-point can lift **1,500lb.**, and the farthest pick-point out can lift **1,200 lb.** wind loads up to 35 mph (with standard set-up).

Complete Kits, for each 30' Tower are available on a 3 day or weekly basis. Ask about additional requirements for setup.

Please contact our IHP Specialist for pricing and availability.

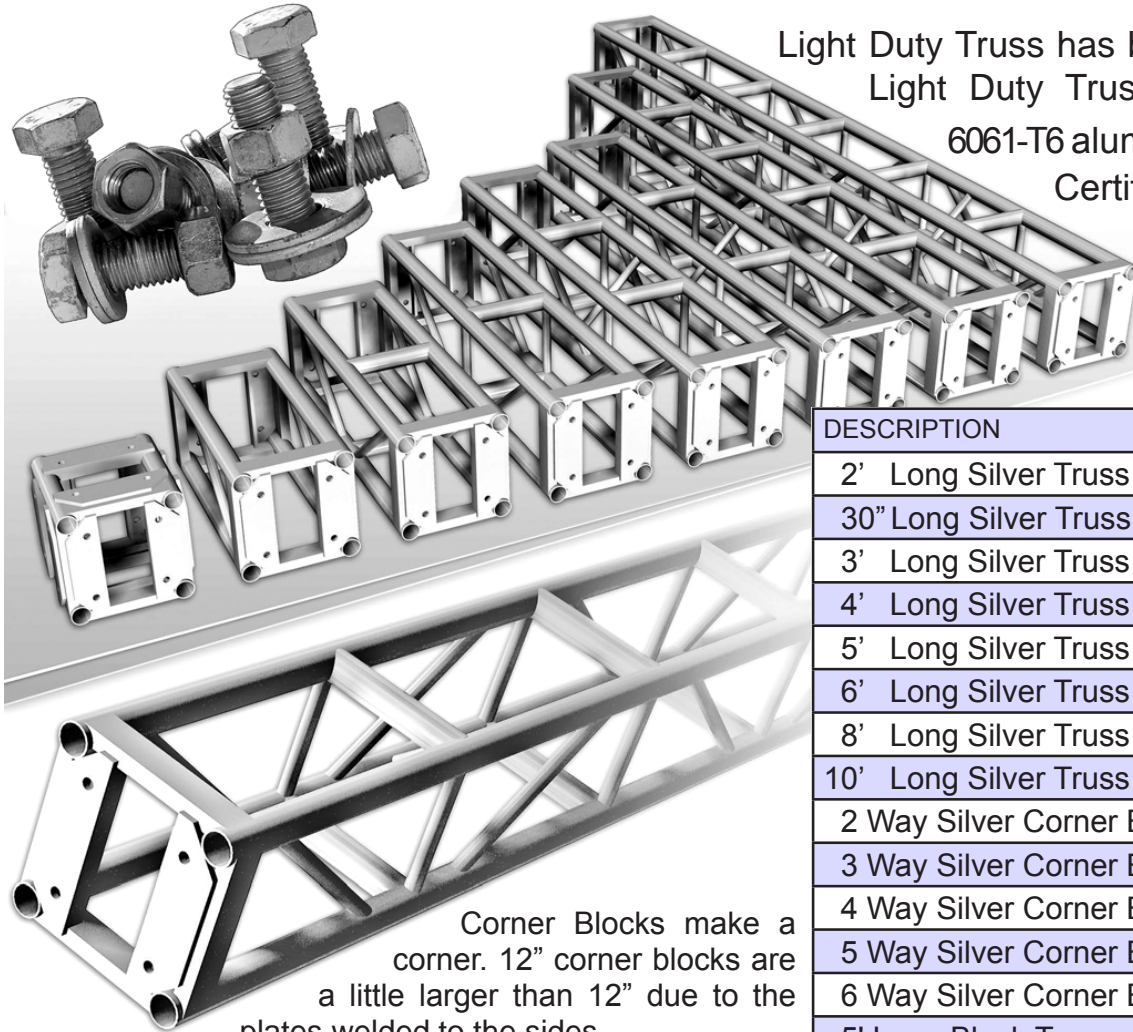


6620 W. Arby Ave.
Las Vegas, NV 89118
(702) 631-4748 www.ihplabor.com

Truss

12"x12" Light Duty

Light Duty Truss has bolt connections.
Light Duty Truss is made with
6061-T6 aluminum. Maximum
Certified span is 40'.
Uniform Load
at 40' is 933
Pounds.



Corner Blocks make a
corner. 12" corner blocks are
a little larger than 12" due to the
plates welded to the sides.

DESCRIPTION	ITEM NO.
2' Long Silver Truss	R520001
30" Long Silver Truss	R520070
3' Long Silver Truss	R520010
4' Long Silver Truss	R520020
5' Long Silver Truss	R520030
6' Long Silver Truss	R520040
8' Long Silver Truss	R520050
10' Long Silver Truss	R520060
2 Way Silver Corner Block	R510000
3 Way Silver Corner Block	R510001
4 Way Silver Corner Block	R510010
5 Way Silver Corner Block	R510020
6 Way Silver Corner Block	R510030
5' Long Black Truss	R520030B
6' Long Black Truss	R520040B
8' Long Black Truss	R520050B
10' Long Black Truss	R520060B
4 Way Black Corner Block	R510020B
5' Long Black Ladder Truss	
10' Long Black Ladder Truss	

ALLOWABLE LOADS

NOTE: THE MAXIMUM LOAD PER ONE SIDE OF THE TRUSS (SEE ELEVATION (A)) SHALL NOT EXCEED ONE-HALF OF THE TABULATED LOAD ON THIS TABLE.

SPAN ft (m)	MAXIMUM ALLOWABLE UNIFORM LOAD (w)			MAXIMUM ALLOWABLE POINT LOADS (P)					
	LOAD lbs/ft	LOAD lbs (kg)	MAX DEFL. in.	LOAD lbs (kg)	MAX DEFL. in.	LOAD lbs (kg)	MAX DEFL. in.	LOAD lbs (kg)	MAX DEFL. in.
10 (3.05)	472	4720 (2141)	0.69	2710 (1229)	0.68	1744 (791)	0.70	1110 (503)	0.73
20 (6.1)	115	2300 (1043)	0.70	1206 (547)	0.61	888 (403)	0.73	633 (287)	0.73
30 (9.14)	60	1800 (816)	1.66	880 (399)	1.35	600 (272)	1.53	428 (194)	1.59
40 (12.2)	31	1240 (562)	2.73	580 (263)	2.12	442 (200)	2.66	308 (140)	2.58

- NOTES:
- 1) THE DESIGN OF THE ALUMINUM TRUSS ON THIS DRAWING IS BASED ON THE REQUIREMENTS OF THE CHAPTER 20 - ALUMINUM - CBC 2007.
 - 2) FABRICATION AND ERECTION OF THE ALUMINUM TRUSS SHALL COMPLY WITH THE GUIDELINES OF THE SECTION 6 OF ALUMINUM DESIGN MANUAL 2005.
 - 3) ALL MEMBERS SHALL BE ALUMINUM ALLOY 6061-T6 TEMPER.
 - 4) THE FILLER ALLOY FOR WELDING SHALL BE IN COMPLIANCE WITH MIN 5554 WELDING RODS.
 - 5) FOR THE LOAD CAPACITY OF THE TRUSS FOR 10', 20', 30' & 40' SPANS, SEE TABLE (C).
 - 6) ALL BOLTS WITH STANDARD WASHERS SHALL CONFORM TO SAE J429 GRADE 8.




[Industry-Compatible]



[2" X 0.125" Main Tube]

Truss

12 x 12


 6620 W. Arby Ave.
 Las Vegas, NV 89118
 (702) 631-4748 www.ihplabor.com

HEAD BLOCKS

The Head Block bolts to the top of the tower and allows the chain from the Chain Hoist to run over the top of the tower and down to the Truss. The block is 36" long with 2 grooved wheels.



Sky Hook Head Block has 3 positions, depending on the size of load to be picked up.



DESCRIPTION	ITEM NO.
Head Block for 12" x 12" Tower	R510400
Sky Hook Adjustable Head Block	R520200



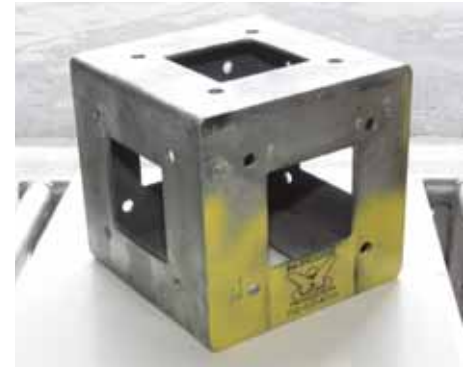
6620 W. Arby Ave.
Las Vegas, NV 89118
(702) 631-4748 www.ihplabor.com

Truss

12" x 12" Connections

12" X 12" STEEL CORNER BLOCK

Steel Corner Block are designed to be exactly 12" x 12" with 6 sides to bolt 12" x 12" truss to.



DESCRIPTION	ITEM NO.
Steel Corner Block	R520315

12" X 12" STEEL WEDGE



12" x 12" Light Duty steel wedge is available in two different angles.

DESCRIPTION	ITEM NO.
45 Degree Wedge	R510080
22.5 Degree Wedge	R510081



12" X 12" STEEL ARTICULATING HINGE



12" x 12" Light Duty Steel Hinge can be used to join 12" x 12" Truss at any angle between 90 degrees to 125 degrees.

DESCRIPTION	ITEM NO.
Steel Articulating Hinge	R520375

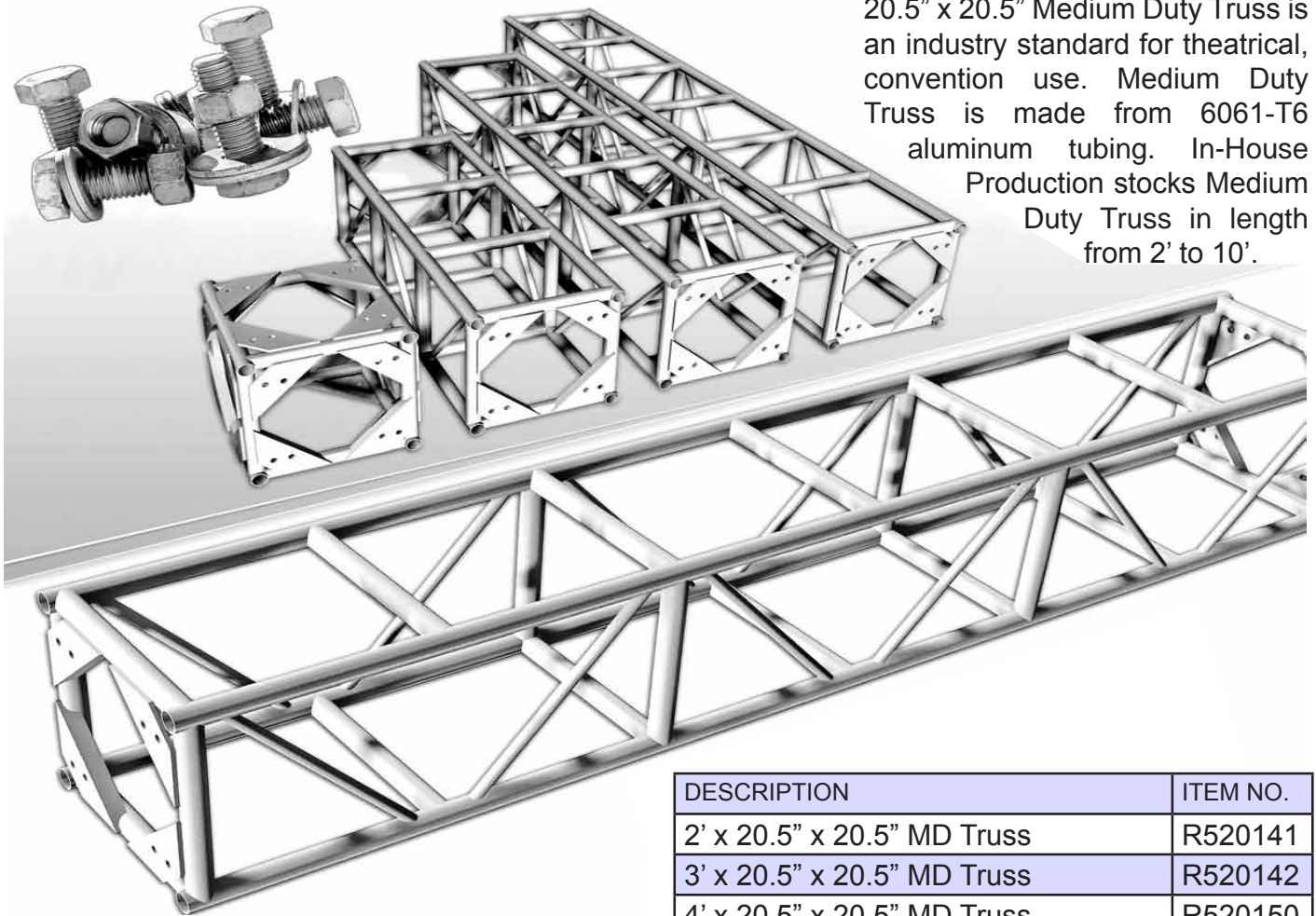
Truss

20-1/2" X 20-1/2" Medium Duty



6620 W. Arby Ave.
Las Vegas, NV 89118
(702) 631-4748 www.ihplabor.com

20.5" x 20.5" Medium Duty Truss is an industry standard for theatrical, convention use. Medium Duty Truss is made from 6061-T6 aluminum tubing. In-House Production stocks Medium Duty Truss in length from 2' to 10'.



DESCRIPTION	ITEM NO.
2' x 20.5" x 20.5" MD Truss	R520141
3' x 20.5" x 20.5" MD Truss	R520142
4' x 20.5" x 20.5" MD Truss	R520150
5' x 20.5" x 20.5" MD Truss	R520160
6' x 20.5" x 20.5" MD Truss	R520161
8' x 20.5" x 20.5" MD Truss	R520170
10' x 20.5" x 20.5" MD Truss	R520180

ALLOWABLE LOADS FOR TRUSSES BEING ERRECTED AS SHOWN ON ELEVATION VIEW									
NOTE: 1) THE MAXIMUM LOAD PER ONE SIDE OF THE TRUSS (SEE ELEVATION (A)) SHALL NOT EXCEED ONE-HALF OF THE TABULATED LOAD ON THIS TABLE									
2) MAX POINT LOAD ATTACHED TO THE MEMBER (B) CAN NOT EXCEED 2100 LBS.									
SPAN ft (m)	MAXIMUM ALLOWABLE UNIFORM LOAD (w)			MAXIMUM ALLOWABLE POINT LOADS (P)					
	LOAD lbs/ft	LOAD lbs (kg)	MAX DEFL. in	LOAD lbs (kg)	MAX DEFL. in	LOAD lbs (kg)	MAX DEFL. in	LOAD lbs (kg)	MAX DEFL. in
10 (3.05)	840	8400 (3810)	0.14	4745 (2152)	0.14	3450 (1565)	0.16	2270 (1030)	0.17
20 (6.1)	230	4600 (2087)	0.42	2306 (1046)	0.35	1729 (784)	0.43	1153 (523)	0.40
30 (9.14)	105	3150 (1429)	0.87	1510 (684)	0.72	1120 (508)	0.88	810 (367)	0.84
40 (12.2)	55	2200 (998)	1.52	1080 (490)	1.22	800 (363)	1.51	540 (245)	1.44
50 (15.2)	35	1750 (794)	2.49	820 (372)	1.96	580 (263)	2.29	420 (191)	2.37

- NOTES:**
- 1) THE DESIGN OF THE ALUMINUM TRUSS ON THIS DRAWING IS BASED ON THE REQUIREMENTS OF THE CHAPTER 20 - ALUMINUM - CBC 2007.
 - 2) FABRICATION AND ERECTION OF THE ALUMINUM TRUSS SHALL COMPLY WITH THE GUIDELINES OF THE SECTION 6 OF ALUMINUM DESIGN MANUAL 2005.
 - 3) ALL MEMBERS SHALL BE ALUMINUM ALLOY 6061-T6 TEMPER.
 - 4) THE FILLER ALLOY FOR WELDING SHALL BE IN COMPLIANCE WITH MIN 5554 WELDING RODS.
 - 5) FOR THE LOAD CAPACITY OF THE TRUSS FOR 10', 20', 30' & 40' SPANS, SEE TABLE (C).
 - 6) ALL BOLTS WITH STANDARD WASHERS SHALL CONFORM TO SAE J429 GRADE 8.

20.5" x 20.5" Medium Duty Corner Blocks allows the designer to make corners from a 2 way to 6 ways. Corners bolt to the end of Medium Duty Truss with 5/8" Grade bolts and nuts. Medium Duty Corner is made from 6061-T6 aluminum Tubing.

DESCRIPTION	ITEM NO.
2 Way Corner Block	R510040
3 Way Corner Block	R510041
4 Way Corner Block	R510050
5 Way Corner Block	R510060
6 Way Corner Block	R510061



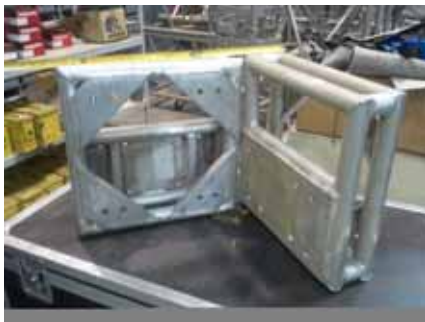
6620 W. Arby Ave.
Las Vegas, NV 89118
(702) 631-4748 www.ihplabor.com

Truss Speciality Items

20.5" X 20.5" HINGE

Join two sections of 20.5" x 20.5" Aluminum Plated Truss at any desired angle.

DESCRIPTION	ITEM NO.
20.5" x 20.5" MD Hinge	R510071



TRUSS ADAPTER

This Truss adapter connects 12" x 12" Light Duty Truss to 20-1/2" x 20-1/2" Medium Duty Truss.

The adapter weighs 6lb.

DESCRIPTION	ITEM NO.
Truss Adapter	R510090

ALUMINUM ANGLED CORNER BLOCK

The Medium Duty angled Corner Block is used to join sections of 20.5" x 20.5" Medium Duty Truss at a fixed 45 degree angle.

DESCRIPTION	ITEM NO.
45 Degree Angle MD Corner	R510082



12" x 12" Tower Truss slides inside medium Duty truss.


TRUSS SLEEVE BLOCK

The Medium Duty Truss Sleeve Block guides the Medium Duty Truss attached as it is raised in a Ground Support System. Ground Support System uses 12" x 12" Towers. A Sleeve Block also serves as a 4 way Corner Block.

DESCRIPTION	ITEM NO.
MD Sleeve Block	R510140

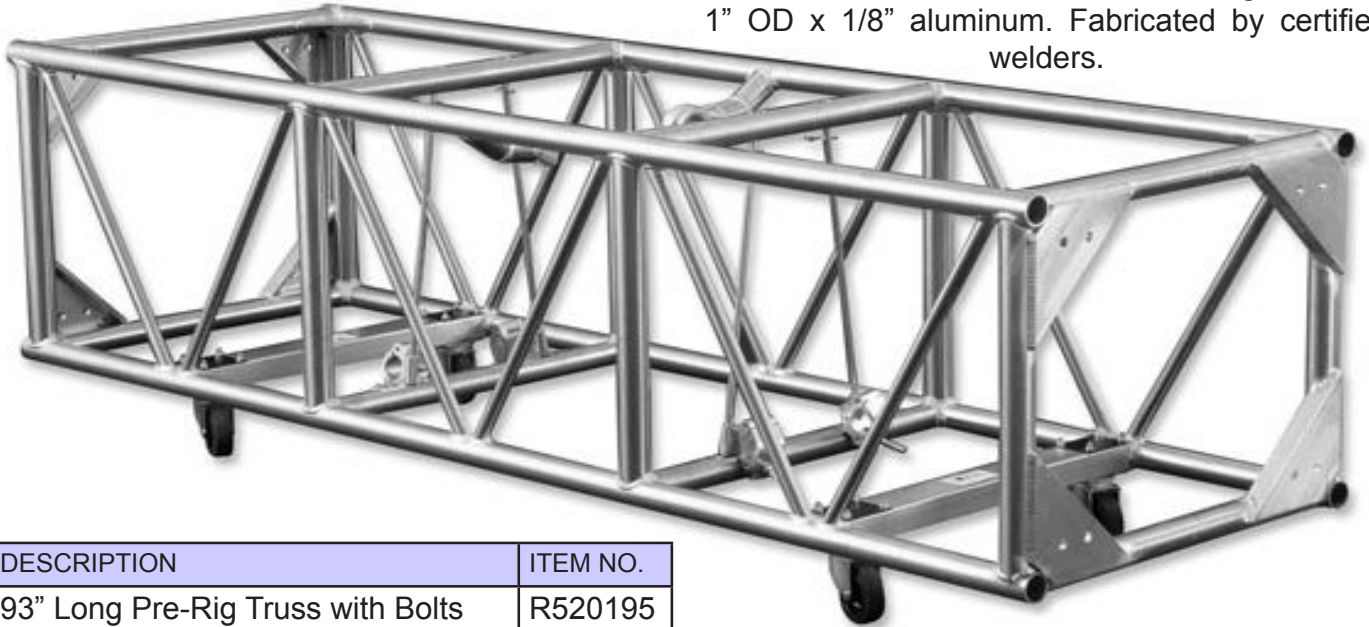
Truss

Pre-Rig


 6620 W. Arby Ave.
 Las Vegas, NV 89118
 (702) 631-4748 www.ihplabor.com

DOUBLE HUNG PRE-RIG TRUSS 26" X 30" PLATED

Standard length is 93". Equipped with bolts, main cords are 2" OD x 1/8" aluminum. Diagonals are 1" OD x 1/8" aluminum. Fabricated by certified welders.



DESCRIPTION	ITEM NO.
93" Long Pre-Rig Truss with Bolts	R520195

DOUBLE HUNG PRE-RIG TRUSS 26" X 30" PLATED CORNER BLOCK

Bolts to Double Hung Pre-Rig Truss. Main cords are 2" OD x 1/8" aluminum. Diagonals are 1" OD x 1/8" aluminum. Fabricated by certified welders.



DESCRIPTION	ITEM NO.
Pre-Rig 26" x 30" Corner Block	R510155



6620 W. Arby Ave.
Las Vegas, NV 89118
(702) 631-4748 www.ihplabor.com

Truss Speciality Items

SILVER CIRCLE TRUSS

12" X 12"
CIRCLES



PLATED 12" X 12" and 20.5 X 20.5" Aluminum Circle Truss. Four evenly sized pieces make the full circle. The 20.5" Truss has a total of eight evenly sized truss pieces.

You can rent parts or pieces of the circle truss for that Special Arch or Stretched Arch. Just add different lengths of straight truss to create the look you need. This can be done on both the 12" and 20.5" silver truss. Add wheels and you have a rolling Arch for that special entrance. **What would your design be?**

DESCRIPTION	ITEM NO.
12" x 12" Outside Diameter 10', Plated Conn.	R520210
12" x 12" Outside Diameter 22', Plated Conn.	R520220

BLACK CIRCLE TRUSS

We have 3 complete Black Circle Truss. Our two smaller ones are 12" X 12" and are either 10' or 20' outside diameter. These two use spigoted connections. Our larger diameter circle (27'), is a 12" triangle with plated connections.

All hardware supplied to connect sections together.


12" X 12"
AND
12" TRIANGLE
CIRCLES

DESCRIPTION	ITEM NO.
Outside Diameter 10', 4 Sections, Black, Spigot Conn.	R520240
Outside Diameter 20', 8 Sections, Black, Spigot Conn.	R520242
Outside Diameter 27', 8 Sections, Black Triangle Truss	R520246



Truss

Speciality Items


 6620 W. Arby Ave.
 Las Vegas, NV 89118
 (702) 631-4748 www.ihplabor.com

PICK UP BAR

Pick-Up Bar for 20.5" x 20.5" Truss, with multiple shackle holes simplifies leveling the Truss when the loading is uneven.

DESCRIPTION	ITEM NO.
Pick-up Bar	R510380



TRUSS STEEL PICK-UP BAR

The Steel Pick-Up Bar allows the Chain Hoist to mount within the Truss when lifting Medium Duty 20-1/2" x 20-1/2" Truss. It is built from steel and a 1" bolt with two Cheeseboro Clamps for aluminum Truss.

DESCRIPTION	ITEM NO.
Steel Pick-Up Bar	R510390



MEDIUM DUTY CHAIN GUIDE

Chain Guide for 20.5" x 20.5" Truss. Used to keep the chain in the center of the truss when lifting the Truss from the bottom Cords. White bushing protects chain from wear.

DESCRIPTION	ITEM NO.
Pick-up Bar	R510380





6620 W. Arby Ave.
Las Vegas, NV 89118
(702) 631-4748 www.ihplabor.com

Truss Speciality Items

TRUSS GRAPPLE

The Grapple allows you to make in-line 90 degree connections between similar Trusses anywhere along a perpendicular primary Truss. The load capacity of the in-line Truss will carry 75 percent of the manufacturer's load rating. The primary Truss must have point load calculations taken into consideration when using.



**Used for Cantilevering of Truss
Is Not Recommended.**

DESCRIPTION	ITEM NO.
Pair of 20-12" Grapple	R510350
Pair of 30" Grapple	R510351
Pair of 12" Aluminum Grapple	R510352
Pair of 12" Steel Grapple	R510353

TRUSS HANGER

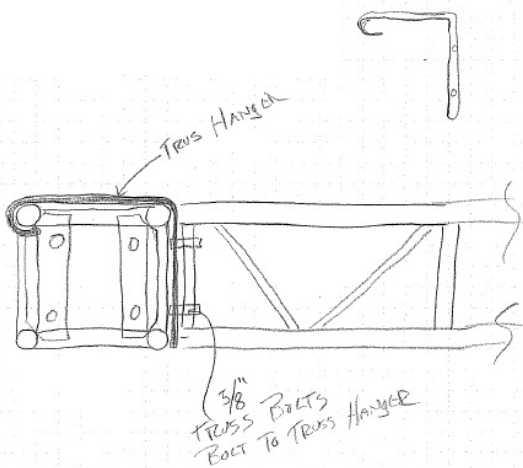


Steel Truss Hangers are designed to be used instead of plated Corner Blocks or replace Truss Grapples. Steel Truss Hangers lay on the top cord of truss and hang over the edge. Not having to dodge diagonal tube, as with Grapples. Steel Truss Hangers are rated at 100 percent of the truss you are hanging from. Also no spacers are required when hanging inside Truss anywhere.

Shown on the left is an example of a hanger connection.



DESCRIPTION	ITEM NO.
Truss Hanger 20.5" (Shown)	R510275
Truss Hanger 12"	R510266



Truss Hanger Installation

1. Hook Truss Hanger on Truss and lay over.
2. Bolt New Truss to Truss Hanger.
3. 2 Truss Hangers attach to end of Truss.
4. $\frac{3}{8}$ " Truss Bolts used to bolt Truss Hanger to end of Truss.
5. Load rating is 100% of the Truss hanging from.

Truss

12 x 12 Ground Support



6620 W. Arby Ave.
Las Vegas, NV 89118
(702) 631-4748 www.ihplabor.com



12" X 12" TOWER

Tower Truss is designed for a compression load. It is built with thicker tubing and diagonals on 3 sides to prevent twisting from the downward force.

DESCRIPTION	ITEM NO.
2' x 12" x 12" Tower	R520079
30" x 12" x 12" Tower	R520140
3' x 12" x 12" Tower	R520080
4' x 12" x 12" Tower	R520090
5' x 12" x 12" Tower	R520100
6' x 12" x 12" Tower	R520110
8' x 12" x 12" Tower	R520120
10' x 12" x 12" Tower	R520130

12" X 12" TOWER HINGE AND OUTRIGGERS



For Ground a Support System, the Tower Outriggers extend the base for stability. Illustrated to the left, consist of an Adjustable Base Plate, 4 Out Riggers, 4 Diagonal Braces from Outrigger to Truss, and 4 Scaffold Leveling Jacks.

DESCRIPTION	ITEM NO.
12" x 12" Tower Leveler (X) Base Plate	R510151
Outrigger Support Bar Straight	R510153
Diagonal Brace	R510155
IHP Custom Truss Outrigger Bracket	R510157
Scaffold Leveling Jack	R460199

OUTRIGGERS

Add Outriggers to any size truss, anywhere, anyplace, with IHP Custom Truss Outrigger Bracket.

Even a single pipe can be made to stand vertically with the use of our outriggers.

With our combination of parts, and your Imagination, We can we build it for You!

Close up Detail,



Close up.



Complete View.

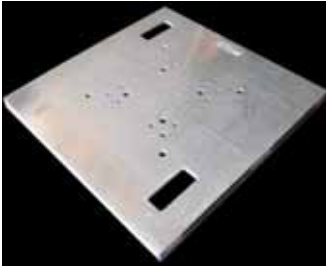




6620 W. Arby Ave.
Las Vegas, NV 89118
(702) 631-4748 www.ihplabor.com

Truss Ground Support

BASE PLATES



Aluminum Base Plate ↙

1/2" x 30" x 30" Aluminum Plate is welded to 1" x 2" Rectangle Aluminum Tubing.
Fit's both 12" x 12" and 20.5" x 20.5" Truss.
Total Weight 51 lb.



Steel Base Plate →

Steel Base Plate is 24" or 42" Square and is Constructed from 2" x 2" x 1/4 wall tubing and 2" x 2" x 1/4" angle.
Fit's both 12" x 12" and 20.5" x 20.5" Truss.
Total Weight of 24" x 24" is 55 lb.
Total Weight of 42" x 42" is 67.5 lb.



Leveling Base Plate ↑

Leveling Base adjust for uneven floor and Fit's 12" x 12" Tower Truss.
Total Weight 150 lb.

DESCRIPTION	ITEM NO.
Aluminum Base Plate	R510100
Steel Base Plate 12" x 12"	R510108
Steel Base Plate 42" x 42"	R510110
12" x 12" Tower Leveler (R-A) Base Plate	R510150
12" x 12" Tower Leveler (R-S) Base Plate	R510151

(R-A) Round Aluminum, (R-S) Round Steel



BASE WEIGHTS




Small Concrete base weight, per half, is 567 lb. (shown)
Large Concrete base weight, per half, is 764 lb.

When additional stability is required we have 2 sizes of base weights that fit around the truss and sit on our steel Base plates.

DESCRIPTION	ITEM NO.
Small Concrete Base Weight 567 lb.	R999004
Large Concrete Base Weight 764 lb.	R999005

Truss

Ground Support


 6620 W. Arby Ave.
 Las Vegas, NV 89118
 (702) 631-4748 www.ihplabor.com

STEEL ENCLOSED CONCRETE FILLED BASE PLATE WEIGHTS

When greater stability is required, IHP has 3 Base Plates to meet your needs.

We make a Black Painted Steel Enclosed Concrete Filled 36" x 36" x 12" Base Plate that weighs in at 1300 lbs.

- Steel Center Top is $\frac{3}{8}$ " Steel Plate made for bolting both 12" and 20.5" Plated Truss.
- $\frac{5}{8}$ " Grade 8 Nuts are Part of the $\frac{3}{8}$ " Steel Bolt Plate.
- Center Hole in the Steel Center Top accepts 1- $\frac{1}{4}$ " Acme Thread.
- Removable 10,000 lbs. Rated Swivel 360°, Pivot 180° Forged Steel Lifting Ring. Can be used for Tie-Downs or!
- Schedule 40 Round Pipe on all 4 corners to accept Scaffold Screw Jacks.
- Recessed Bottom Corners in Base Plate for "0" starting point while leveling.
- Center Fork Lift Pocket opening for easy moving and stacking.

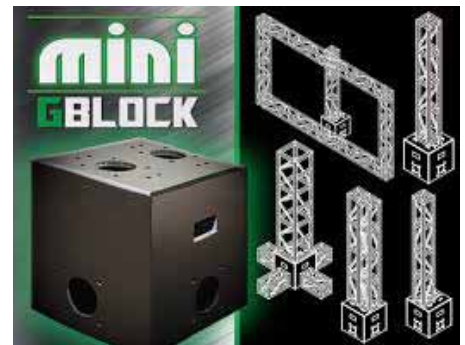


DESCRIPTION	ITEM NO.
10,00 lbs. Rated Swivel Lifting Ring	R999001
1,300 lbs. "LR"-Base Plate (accepts Lifting Ring)	R999002
1,300 lbs. "A"-Base Plate (access)	R999003
3,500 lbs. Original G-BLOCK™	R999008
1,400 lbs. mini G-BLOCK™	R999007
Leveling Jack	R460199

Also in stock, **G-BLOCKS™** from "Gallager Staging".



- The Original **G-BLOCK™** is 36" x 36" x 36" and Weighs 3,500 lbs.
- The **mini G-BLOCK™** is 24" x 24" x 24" and Weighs 1,400 lbs.
- Black Powder Coated.
- Compatible with commonly used stage trussing.

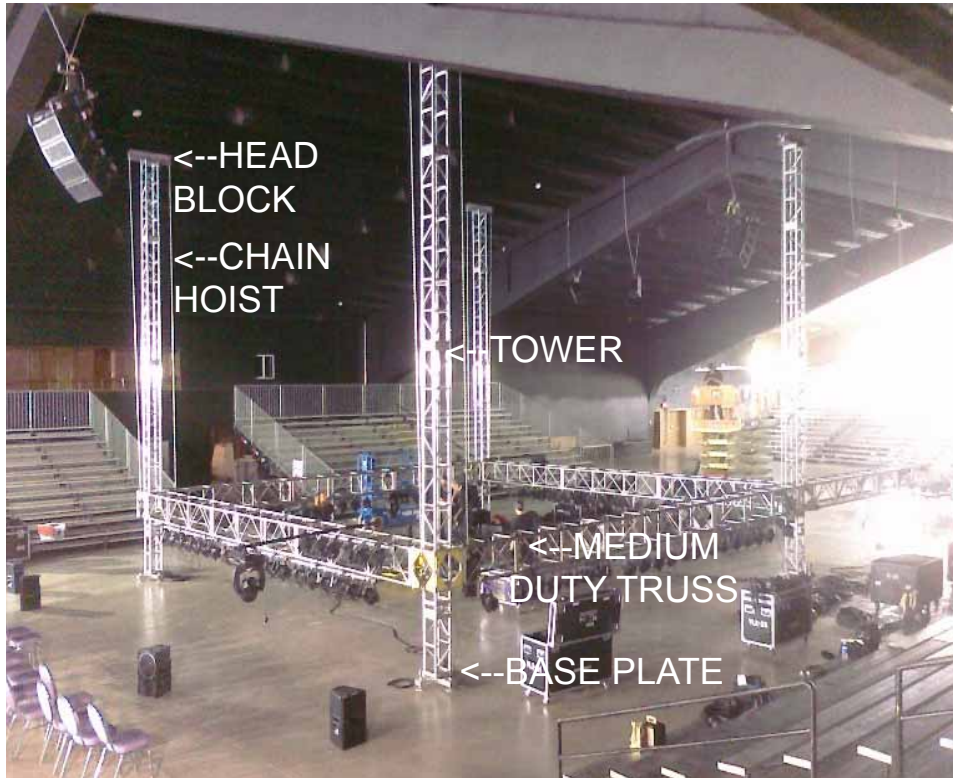




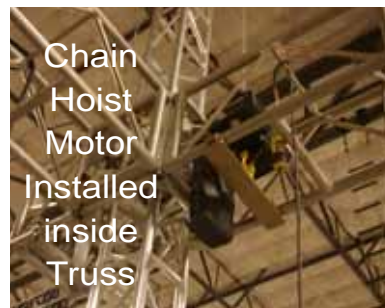
6620 W. Arby Ave.
Las Vegas, NV 89118
(702) 631-4748 www.ihplabor.com

Truss

12x12 Ground Support




This is an example of an Ground Support, which can be used inside or outside. This design is used where there is no structure to hang from. In this photo the Ground Support was used for lighting around a boxing ring. Starting from the bottom: 4 adjustable Base Plates with Out-Riggers (added after picture when Truss is higher than hinge), 4 - 12" x 12" Tower Truss (can be heights from 20' to 34'), 4 - 20.5" Sleeve Blocks that go around the 12" Tower Truss (hoist and 20.5" Truss attach to sleeve block), 20.5" x 20.5" Medium Duty Truss (can go up to 45' x 45' inside square), 4 - Chain Hoists to lift Sleeve Block up or down Tower Truss, 4 - Head Blocks (used to run chain from Chain Hoist over top of Truss Tower). The Chain Hoists work together and climb up the Tower Truss.



One can hang Lighting, Video, Audio, Props, Drapes or sets from Ground Support. This is one design of what can be done with the Ground Support System.

Truss

Speciality Items


 6620 W. Arby Ave.
 Las Vegas, NV 89118
 (702) 631-4748 www.ihplabor.com

CHEESEBORO

Alternately spelling known as "cheeseboro" or cheesborough, cheese-burger, burgers, scaffold clamp, or pipeclamps. A device for connecting 2 pipe or tubing together for added hanging points. Comes in three styles: Single with (bolt or eye nut), Rigid (fixed at straight or 90°), and Swivel. Pipe-Clamps made from two materials, forged steel and machined aluminum. The steel and aluminum Pipe-Clamps fit 1.25", 1.5", and 2" O.D. round pipe, aluminum and tubing.

Aluminum Pipe-Clamps available in black.

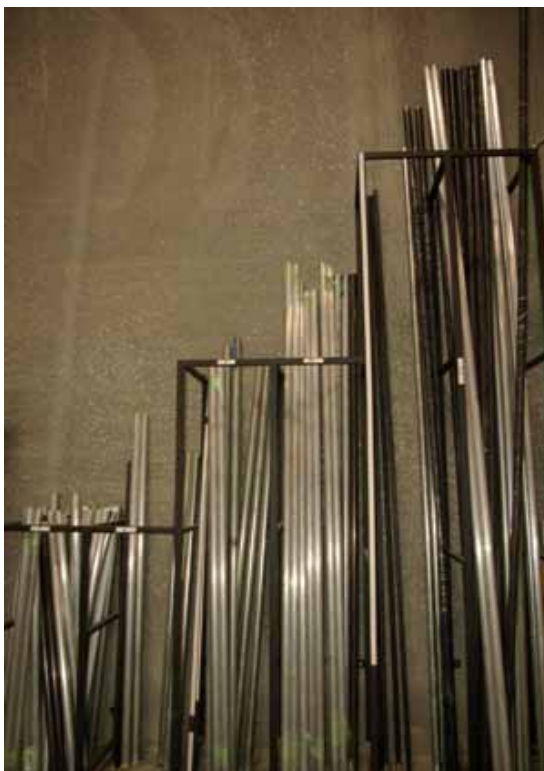
Working load limit aluminum - 750 lb.

Working load limit steel 1,100 lb.



DESCRIPTION	ITEM NO.
Swivel Clamp	R510190
Single Clamp	R510191
90 Degree Fixed Coupler	R510192

PIPE



Round galvanized Pipe, black Pipe, aluminum Pipe and round and square tubing available for rent or sale. Pipes come with or without threaded ends. Sizes run from 1" to 2" pipe or tubing with larger or smaller sizes available upon request. Lengths run from 3' to 21'. One (1") mechanical tubing available from 1' to 10' in Length.

Listed Below is the Black Steel. Also Available in the same lengths is Aluminum Tubing.

DESCRIPTION	ITEM NO.
21' Long 1-1/2" #40 Pipe Steel/Black	R350001
20' Long 1-1/2" #40 Pipe Steel/Black	R350002
15' Long 1-1/2" #40 Pipe Steel/Black	R350003
12' Long 1-1/2" #40 Pipe Steel/Black	R350004
10' Long 1-1/2" #40 Pipe Steel/Black	R350005
8' Long 1-1/2" #40 Pipe Steel/Black	R350006
6' Long 1-1/2" #40 Pipe Steel/Black	R350007
5' Long 1-1/2" #40 Pipe Steel/Black	R350008
4' Long 1-1/2" #40 Pipe Steel/Black	R350009
3' Long 1-1/2" #40 Pipe Steel/Black	R350010



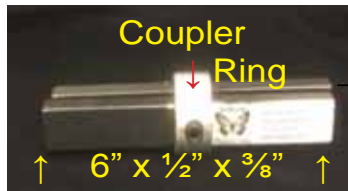
6620 W. Arby Ave.
Las Vegas, NV 89118
(702) 631-4748 www.ihplabor.com

Truss
Speciality Items

PIPE PECKER

INTERNAL PIPE COUPLER

Provides a secure, smooth joint when connecting 2 pipes together. Can be Steel or Aluminum, Pipe or Tubing. Couplers made for 1-1/4" - 1-1/2" Pipe or 2" Tubing. Perfect for long Banners or Hand Rails. Can be used to add a header curtain to a truss to mask truss spot and/or rigging hardware for a finished Theatrical Look.



Quickly joins two pipes together without drilling or threading for permanent or temporary installations. The coupler is the same diameter as the pipe for a flush appearance. We can provide additional ring sizes to match your needs. Install by loosening the set screw with a 1/4" Hex Key to open the splice. Insert the coupler completely into both pipes and tighten the set screw.



These examples show the Pipe Pecker with Truss Corner Blocks and a Header Pipe that could mask the top of the Truss or be used to hang a show teaser or Banner above Your Stage.



DESCRIPTION	ITEM NO.
6" Long Coupler	R350060
8" Long Coupler	R350061
1-1/2" Pipe 2 Way Coupler	R357070
1-1/2" Pipe 3 Way Coupler	R357071

Chain Hoist



6620 W. Arby Ave.
Las Vegas, NV 89118
(702) 631-4748 www.ihplabor.com

CHAIN MASTER CHAIN HOIST - 1 TON

Single Brake or Double Brake 1 Ton Hoist 3 Phase. Chain Motor rental price includes and comes with 2-10 foot and 1-20 foot (Eye to Eye) 3/8" steel Slings, 1 STAC Chain, 5-5/8" Shackles, 100' Fly Cable, Controller, Pendant, 100' Controller Power Cable.



DESCRIPTION	ITEM NO.
1 Ton Double Break 78' Chain 16 FPM	R150040
1 Ton Single Break 78' Chain 16 FPM (120lb.)	R150050
1 Ton Double Break 100' Lift 32 FPM	R150091
1/4 Ton 3 Phase 80' Lift Chain 20 FPM (50lb. with Bag and Chain)	R150001
1/4 Ton Double Reeve to 1/2 Ton 40' Lift Chain 10 FPM (50lb.)	R150100

COLUMBUS MCKINNON CM CHAIN HOIST

Chain Motor rental price includes and comes with 2-10' and 1-20' (Eye to Eye) 3/8" Steel Slings, 1 STAC Chain, 5-5/8" Shackles, 100' Fly Cable, Controller, Pendant, 100' Controller Power Cable.

DESCRIPTION	ITEM NO.
1 Ton 75' Chain 16 FPM	R150070
1/2 Ton 40' Chain 16 FPM	R150020





6620 W. Arby Ave.
Las Vegas, NV 89118
(702) 631-4748 www.ihplabor.com

RIGGING

Chain Hoist

RM SERIES II MANUAL CHAIN HOISTS



Available Capacity
3/4 TON TO 3 TON
RLP PREMIUM MANUAL
LEVER PULLER

In-House Production stocks the Manual Lever Puller in the 3/4 Ton and 1-1/2 Ton capacity with multiple chain length.

We also stock the Chain Hoist in the 1 Ton, 2 Ton, and 3 Ton capacity.

Others sizes available by special order.



Available Capacity
1/2 Ton to 3 Ton

RM Series II Manual Chain Hoist meets or exceeds international standards, including ASME B30.16.

DESCRIPTION	Hook Travel	Chain Pull	ITEM NO.
1 Ton Hand Chain Hoist	40'	40'	R430110
1 Ton Hand Chain Hoist	10'	10'	R430120
2 Ton Hand Chain Hoist	10'	10'	R430130
3/4 Ton Lever Operated Hoist	10'		R430140
3/4 Ton Lever Operated Hoist	13'		R430150
3/4 Ton Lever Operated Hoist	16'		R430160
1-1/2 Ton Lever Operated Hoist	6'		R430170
2 Ton Maasdam Cable Puller	6'		R250300

RATCHET LEVER HOIST (COME-A-LONG)



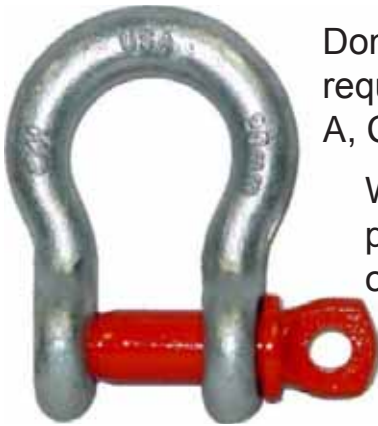
MAASDAM POW'R-PULL

2 Ton Cable Puller
Model #: 144SB-6
Weight: 8.75lbs.

Cable Length: 12'.
Cable Lift: 6'.
Cable Diameter: 3/16".
Leverage: 30:1



SCREW PIN ANCHOR SHACKLES



Domestic Screw Pin Anchor Shackles meet the performance requirements of Federal Specification RR-C271D Type IVA, Grade A, Class 2.

Working load limit permanently shown on every Shackle.

DESCRIPTION	Working Load Limit	ITEM NO.
1/4" Shackle	1,000 lb.	R440001
3/8" Shackle	2,000 lb.	R440030
1/2" Shackle	4,000 lb.	R440010
5/8" Shackle	6,500 lb.	R440050
3/4" Shackle	9,500 lb.	R440020

Other sizes available on request

PEAR-FORGED CARBON STEEL RINGS

Pear Links are made of Carbon Steel, Quenched, Tempered, and Drop Forged. These weld less sling links are individually proof tested at 2 times working load limit.

DESCRIPTION	Working Load Limit	ITEM NO.
3/8 inch Forged Pear Ring	1,800lb.	R330010
1/2 inch Forged Pear Ring	2,900lb.	R330001
5/8 inch Forged Pear Ring	4,200lb.	R330020

Other sizes available on request.



Warning

Improper use or care of all rigging equipment, can result in bodily injury or property damage.

SPECIAL THEATRICAL ALLOY CHAIN

CM Special Theatrical Alloy Chain (STAC) is used for theatrical rigging applications where bridle adjustable is required. Made from heat treated alloy steel to provide long life, each link is proof tested to assure weld and material integrity. The 4:1 design factor meets NACM/GR80 standards for strength. Pieces are tagged with grade, reach, size and working load limit for positive easy identification.

The link accepts shackles up to 3/4". **WLL 12,000lbs.**



DESCRIPTION	ITEM NO.
1/2" x 3' STAC Grade 80 w/Cert Tag	R430080
1/2" x 5' STAC Grade 80 w/Cert Tag	R430090

Other sizes available on request.



6620 W. Arby Ave.
Las Vegas, NV 89118
(702) 631-4748 www.ihplabor.com

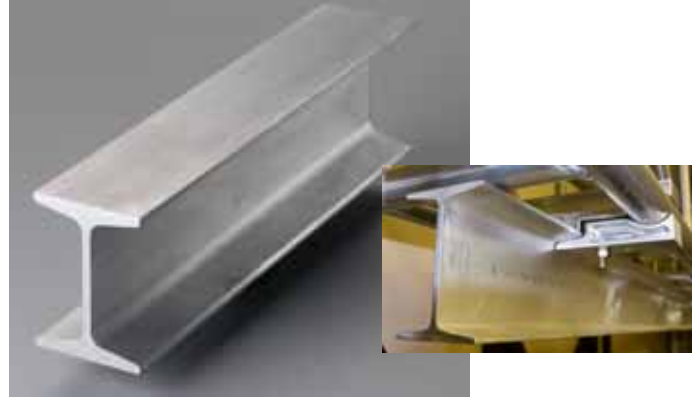
Rigging I-Beam

Aluminum American Standard I-Beam

ASTM B221-08 6061-T6

DESCRIPTION	ITEM NO.
5' Long 6" x 3"	R510240
10' Long 6" x 3"	R510230
15' Long 6" x 3"	R510220
25' Long 6" x 3"	R510210

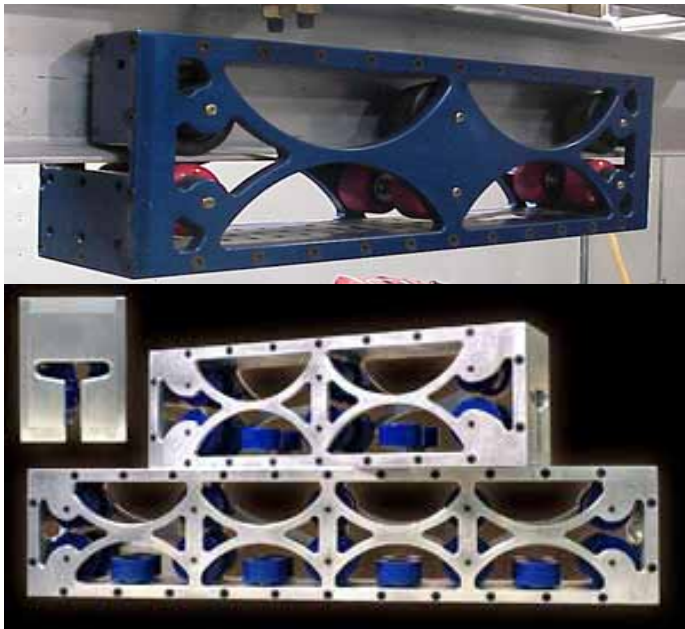
Other sizes available on request



ALUMINUM I-BEAM TROLLEY

Our heavy-duty trolley system uses 6" x 3" aluminum I-Beam. The trolleys come in 12", 24", and 36". Each trolley includes a mounting surface with dozens of grid-spaced 3/8" threaded holes. This allows the trolley to carry virtually anything.

DESCRIPTION	ITEM NO.
2' Long Aluminum Trolley	R430001
3' Long Aluminum Trolley	R430010



STEEL HOIST TROLLEY



1/2 Ton

1 and 2 Ton

Simple, rugged, built for trouble-free service and ease of operations across a wide range of Steel I-Beam applications.

DESCRIPTION	ITEM NO.
1/2 Ton Steel Trolley	R430020
1 Ton Steel Trolley	R430030
2 Ton Steel Trolley	R430031

RIGGING

Beam Clamps



6620 W. Arby Ave.
Las Vegas, NV 89118
(702) 631-4748 www.ihplabor.com



This style Beam Clamp is used to attach to a standard I-Beam flange for overhead lifting and rigging applications. Adjustable to fit a wide range of flange widths. Built-in suspension bar for easy attachment to load. Steel construction, painted black.

This style Beam I-Clamp is available in 3 Rated capacities.

DESCRIPTION	ITEM NO.
1 Ton 2,000 lb. Load Rated	R160010
2 Ton 4,000 lb. Load Rated	R160011
3 Ton 6,000 lb. Load Rated	R160012
5 Ton 10,000 lb. Load Rated	R160013

NEVADA I-BEAM CLAMP

The Nevada I-Beam Clamp attaches a Shackle to a standard Aluminum 6 x 3.33" I-Beam I-Beam flange for overhead lifting and rigging applications. It can be used to hang I-Beam track from an → overhead lifting point.

DESCRIPTION	ITEM NO.
Nevada I-Beam Clamp	R160030



I-BEAM HANGER

This hanger attaches I-Beam Track and Trolley (rigging page number 20) below Medium Duty 20-1/2" Truss. Safely transferring the weight carried on the I-Beam and Trolley to the top of the Truss. A threaded adjustment pulls the I-Beam tight to the Truss.

DESCRIPTION	ITEM NO.
I-Beam Hanger	R160031



← This style Beam Clamp attaches Unistrut® steel framing to standard I-Beam flanges

DESCRIPTION	ITEM NO.
1-5/8 Channel Unistrut® to I-Beam Clamp	R540090
3-1/4 Channel Unistrut® to I-Beam Clamp	R540091

Warning Improper use or care of all rigging equipment, can result in bodily injury or property damage.



6620 W. Arby Ave.
Las Vegas, NV 89118
(702) 631-4748 www.ihplabor.com

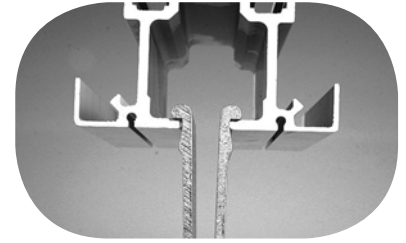
Rigging

Air Wall Hangers

MEGA-AIRWALL HANGERS



The Mega-Airwall Hanger will fit a wide variety of air wall tracks. The Mega Airwall Hanger engages



the airwall track for the full length of the hanger giving twice the length of metal to metal connection.

The Mega Airwall Hanger will also fit Unistrut® style channel.

The Mega Airwall Hanger 7" is 750 lb. load rated.
The Mega Airwall Hanger 4" is 500 lb. load rated.

DESCRIPTION	ITEM NO.
Mega 7" Airwall Hanger, 750 lb. Load Rated	R160038
Mega 4" Airwall Hanger, 500 lb. Load Rated	R160039

GENERAL AIRWALL HANGERS

A Forged Eye for installation in Airwall Track. The color code of green (correct) red (incorrect) instantly shows the installer that the track piece is correctly positioned. Fits certain Airwall Tracks.



DESCRIPTION	ITEM NO.
General Airwall Hanger	R160037

Rigging

Slings



6620 W. Arby Ave.
Las Vegas, NV 89118
(702) 631-4748 www.ihplabor.com

AIRCRAFT CABLE SLINGS

Slings are made with flemish eyes and heavy duty thimbles.
Thimble Eyes will accept a 5/8" Shackle.
Length is Eye to Eye



Load Ratings for 1/4" Cable

- Vertical Rating at 0.65 Ton,
- Choke Rating at 0.48 Ton,
- Basket Rating at 1.3 Ton.

Load Ratings for 3/8" Cable

- Vertical Rating at 1.4 Ton,
- Choke Rating at 1.1 Ton,
- Basket Rating at 2.9 Ton.

DESCRIPTION	ITEM NO.
1/4" x 100' Spool	R120200
1/4" x 250' Spool	R120202
1/4" x 500' Spool	R120204
1/4" x 100' Spool (Black)	R120208
1/4" x 250' Spool (Black)	R120210
1/4" x 500' Spool (Black)	R120212
1/4" x 5' Steel Sling	R120403
1/4" x 10' Steel Sling	R120408
1/4" x 15' Steel Sling	R120413
1/4" x 20' Steel Sling	R120418
1/4" x 30' Steel Sling	R120428

DESCRIPTION	ITEM NO.
3/8" x 16" Steel Sling Dogbone	R120420
3/8" x 2' Steel Sling Dogbone	R120422
3/8" x 3' Steel Sling	R120424
3/8" x 5' Steel Sling	R120428
3/8" x 5' Steel Sling with Hose	R120429
3/8" x 8' Steel Sling	R120434
3/8" x 10' Steel Sling	R120438
3/8" x 10' Steel Sling with Hose	R120439
3/8" x 15' Steel Sling	R120448
3/8" x 20' Steel Sling	R120458
3/8" x 24' Steel Sling	R120478
3/8" x 30' Steel Sling	R120478
3/8" x 50' Steel Sling	R120516



Load Ratings for 1/2" Cable

- Vertical Rating at 2.5 Ton,
- Choke Rating at 1.9 Ton,
- Basket Rating at 5.1 Ton.

DESCRIPTION	ITEM NO.
1/2" x 2' Steel Sling	R120622
1/2" x 5' Steel Sling	R120628
1/2" x 10' Steel Sling	R120638
1/2" x 20' Steel Sling	R120658
1/2" x 30' Steel Sling	R120678

Warning

Improper use or care of any equipment, can result in bodily injury or property damage.



ROUND SLINGS

POLYESTER ROUND SLINGS

A round sling is made up of nylon strands inside a polyester cover, that is capable of heavy weight loads. Their load capacity is about the same, but a Polyester Round Sling must usually be backed up with a wire safety due to fire code.



GAC FLEX

A round sling made up of strands of galvanized aircraft cable inside a polyester cover that is capable of heavy weight loads. A GAC Flex is almost identical to a Polyester Round Sling, except that a Polyester Round Sling uses nylon fibers rather than aircraft cable. Since a GAC Flex is made from wire it requires no safety backup.

- Vertical Rating at 5,300lb.
- Choke Rating at 4,200lb.
- Basket Rating at 10,600lb.

DESCRIPTION	ITEM NO.
2' Round Polyester Sling	R660020
3' Round Polyester Sling	R660021
6' Round Polyester Sling	R660024
9' Round Polyester Sling	R660027
12' Round Polyester Sling	R660030

DESCRIPTION	ITEM NO.
3' GAC Flex	R660001
6' GAC Flex	R660004
9' GAC Flex	R660007

Warning

Improper use or care of any equipment, can result in bodily injury or property damage. Do not exceed rated capacity.

Round Sling covers come in colors for identification. Round Slings used in the entertainment industry are Black, but have the rating of a green Sling. The color rating code (as shown in the table below) is on the identifying tag instead of the polyester cover color.

Color	Inches	LBS/FT	Vertical	Choker	Basket
Purple	0.60	0.30	2,600	2,100	5,200
Green (Black)	0.80	0.40	5,300	4,200	10,600
Yellow	1.00	0.50	8,400	6,700	16,800
Tan	1.20	0.60	10,600	8,500	21,200
Red	1.30	0.80	13,200	10,600	16,400
White	1.40	0.90	16,800	13,200	33,600
Blue	1.55	1.20	21,200	16,400	42,400
Orange	1.75	1.50	25,000	21,200	50,000

Rigging

Sheaves and Pulleys

IN-HOUSE PRODUCTION 6620 W. Arby Ave.
Las Vegas, NV 89118
(702) 631-4748 www.ihplabor.com



SMC/Russ Anderson



Rescue Systems, Inc.



AMC Fabrication, Inc.

DESCRIPTION	ITEM NO.
SMC-Single Axle, Ball Bearing, Stainless Steel, Aluminum, 4" Sheave for 5/8" Rope	R120600
SMC-Single Axle, Ball Bearing, Stainless Steel, Aluminum, 2" Sheave for 5/8" Rope	R120610
CMI-Double Axle, Ball Bearing, Stainless Steel, Steel, 2" Sheave for 1/2" Rope	R120620
Block Division 03048-2, 2-1/2" Sheave, for 1/4" cable	R120630

Block Division, Inc.



CMI Corporation



CMI Corporation





6620 W. Arby Ave.
Las Vegas, NV 89118
(702) 631-4748 www.ihplabor.com

Electrical Cam-Lock Adapters

DOUBLE FEMALE CAM-LOCK ADAPTER

Female-Female, Multi-Way Connector, Double, 400 Amp Max., 16 Series Taper Nose, Commercial Grade, ECT Cam-Type Connector

Colors available

- Black,Red,Blue
- White,Green



DESCRIPTION	ITEM NO.
Green Female-Female Turnaround	R200090
White Female-Female Turnaround	R200091
Black Female-Female Turnaround	R200092
Red Female-Female Turnaround	R200093
Blue Female-Female Turnaround	R200094

DOUBLE MALE CAM-LOCK ADAPTER

Male-Male, Multi-Way Connector, Double, 400 Amp Max., 16 Series Taper Nose, Commercial Grade, ECT Cam-Type Connector

Colors available

- Black,Red,Blue
- White,Green



DESCRIPTION	ITEM NO.
Green Male-Male Turnaround	R200095
White Male-Male Turnaround	R200096
Black Male-Male Turnaround	R200097
Red Male-Male Turnaround	R200098
Blue Male-Male Turnaround	R200099

TAPPING T CAM-LOCK ADAPTER

Male-Female-Female, Multi-Way Connector, Tapping Tee, 400 Amp Max., 16 Series Taper Nose, Commercial Grade, ECT Cam-Type Connector

Colors available

- Black,Red,Blue
- White,Green



DESCRIPTION	ITEM NO.
Green Double Female Splitter	R200100
White Double Female Splitter	R200101
Black Double Female Splitter	R200102
Red Double Female Splitter	R200103
Blue Double Female Splitter	R200104

PARALLING T CAM-LOCK ADAPTER

Female-Male-Male, Multi-Way Connector, Tapping Tee, 400 Amp Max., 16 Series Taper Nose, Commercial Grade, ECT Cam-Type Connector

Colors available

- Black,Red,Blue
- White,Green



DESCRIPTION	ITEM NO.
Green Double Male Splitter	R200105
White Double Male Splitter	R200106
Black Double Male Splitter	R200107
Red Double Male Splitter	R200108
Blue Double Male Splitter	R200109

Electrical

Power Distribution



6620 W. Arby Ave.
Las Vegas, NV 89118
(702) 631-4748 www.ihplabor.com

CAM-LOCK TO TAIL



Standard 3 phase 4 wire (No Neutral) bare end to Cam-Lock Connectors.

DESCRIPTION	ITEM NO.
Bundle of Green, Black, Red, Blue, Bare end to Cam-Lock Connectors	R200175

50' 4/0 CAM-LOCK TO CAM-LOCK CABLE ←

Available as a kit or individually with standard color Cam-Lock Connectors. Also available in 25' or 100' lengths.

DESCRIPTION	ITEM NO.
50' Kit - Green, White, Black, Red, Blue	R200120
50' Green	R200150
50' White	R200160
50' Black	R200170
50' Red	R200140
50' Blue	R200130



NUTECH INDUSTRIES, INC.

TEMPORARY POWER DISTRIBUTION
The clear view panels are made of high impact, non-corrosive, non-conductive polycarbonate enclosures which are smaller in size and lighter in weight than older conventional panels.

DESCRIPTION	ITEM NO.
AV1 - MTR - IHP CONTROLLER, 9-20A 110V, 3 PER PHASE + PHASE CONNECTOR	R190001



6620 W. Arby Ave.
Las Vegas, NV 89118
(702) 631-4748 www.ihplabor.com

Electrical Power Distribution

5 PIN HUBBELL

TEMPORARY POWER DISTRIBUTION
A Hubbell 60 Amp HBL560P9W or 100 Amp HBL5100P9W connector to Cam-Lock connectors.

Overall length is approximately 5'.



DESCRIPTION	ITEM NO.
5 Pin Hubbell to Cam-Lock	R200202



4 PIN HODGE

TEMPORARY POWER DISTRIBUTION
A Hubbell HBL560PS1W connector to Cam-Lock connectors.

Overall length is approximately 5'.



DESCRIPTION	ITEM NO.
4 Pin Hodge to Cam-Lock	R200180



50 AMP TWOFER



TEMPORARY POWER DISTRIBUTION
Two Hubbell CS8364C CA style receptacles to 1 Hubbell CS8365C locking plug. The overall length of the TwoFer is 3'.


R210260

DESCRIPTION	ITEM NO.
50 Amp Twofer	R200080



Hubbell
CS8364C CA Style

Electrical Cable

IN-HOUSE 6620 W. Arby Ave.
 Las Vegas, NV 89118
PRODUCTION
 (702) 631-4748 www.ihplabor.com

FLY CABLE

Fly Cable connects between chain hoist and controller. In-House Production stocks lengths from 25' to 100' for both Chain Master and Columbus McKinnon configurations.



Fly Cable for Chain Master Hoists is a 14-4 cable with a Hubbell male connector HBL2421, and a Hubbell female connector HBL2423.

DESCRIPTION	ITEM NO.
25' CM Cable	R210039
50' CM Cable	R210040
75' CM Cable	R210050
100' CM Cable	R210060
25' MC Cable	R210070
50' MC Cable	R210080
75' MC Cable	R210090
100' MC Cable	R210100

Fly Cable for Columbus McKinnon Hoists is a Multipin (7pin "soco") and used on all CM Chain Hoists.

DESCRIPTION	ITEM NO.
10' CM/7 Pin Cable	R210001
25' CM/7 Pin Cable	R210002
50' CM/7 Pin Cable	R210003
75' CM/7 Pin Cable	R210004
100' CM/7 Pin Cable	R210005





6620 W. Arby Ave.
Las Vegas, NV 89118
(702) 631-4748 www.ihplabor.com

Electrical Controller Pendants

CHAIN HOIST MOTOR CONTROLLER PENDANT

Hand held Pendant for both CM and MC, with or without 50' Lead Cable, also Pendant 100' Extension.



Chain Master

R180010



Chain Master
R180050



R180009



R180011

DESCRIPTION	ITEM NO.
16 Way CM Motor Control Pendant	R180011
8 Way CM Motor Control Pendant	R180052
4 Way CM Motor Control Pendant	R180012
8 Way ML Motor Control Pendant	R180053
100' CM Pendant Extension	R180033
50' CM Pendant Extension	R630001
100' ML Pendant Extension	R180034
CM Motor Pickles	R180060
MC Motor Pickles	R180066



R180012

CM Pickle R180060



Chain Master
Pendant Extension
R180034



Electrical

Chain Motor Control



6620 W. Arby Ave.
Las Vegas, NV 89118
(702) 631-4748 www.ihplabor.com

Pelican Case Portable Hoist Controller

Specifications:

- Three phase (208V) configuration
- Dual microprocessor design (main unit & hand held remote)
- Full magnetic circuit breaker protection
- From 4 to 32 hoists
- Power & phase indicators

Enclosure options:

- Lightweight rolling Pelican case
- Suitcase style ATA case
- Rolling distro style ATA case

Remote features:

- Individual "Bump" pushbuttons
- Processor independent E-stop system
- Red-Green direction LED indicators
- 50' and 100' 6 pin XLR data cable standard

Connector options:

- Multipin (7 pin "soco")



Columbus McKinnon

DESCRIPTION	ITEM NO.
Columbus Mckinnon Portable Controller	R180310



DESCRIPTION	ITEM NO.
8 Way CM Motor Control	R180020
4 Way CM Motor Control	R180140
8 Way ML Motor Control	R180130





6620 W. Arby Ave.
Las Vegas, NV 89118
(702) 631-4748 www.ihplabor.com

Griplock® System Pro-Lock/Pro-Grip

Pro-Lock/Pro-Grip Cable Grippers

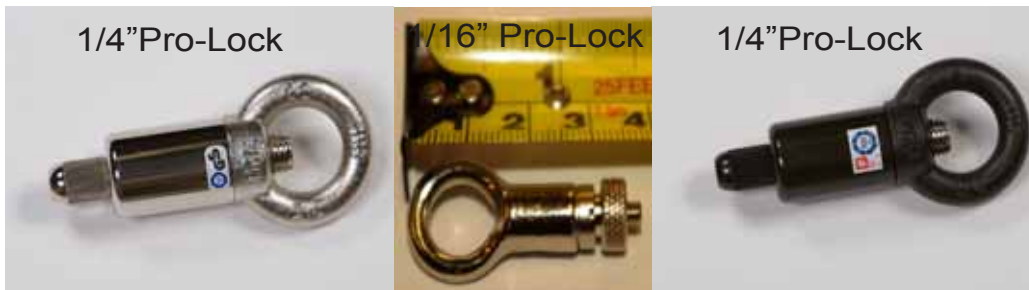


1/8" Pro-Lock

In-House Production stocks the Pro-Lock and Pro-Grip for both **Sale** and **Rental**. These devices permit unlimited adjustment in height. Type 15 uses 1/16" cable, Type 30 uses 1/8" cable, Type 50 uses 3/16" cable, and Type 80 uses 1/4" cable.



3/16" Pro-Lock



1/4" Pro-Lock

1/16" Pro-Lock

1/4" Pro-Lock

Pro-Grip Cable Grippers

Use the same Wire Sizes as Pro-Locks and attach to Snap Rings, Forks, Screen Clamps, Banner Clamps. Their use is limited to the rating of the wire/Grip/Clamp combination.



1/8"

Pro-Grip

1/16"

Pro-Grip



1/8" Snap Hook

1/4" Pro-Grip w/Fork

CABLE SIZE 7*9 or 7*19	DESCRIPTION	Type	WWL 1:5 RATIO	ITEM NO.
1/8"	Pro-Lock	30-RI-V6B-B (Black)	225 lb.	R410020
1/8"	Pro-Lock	30-RI-V6-S (Silver)	225 lb.	R410030
1/8"	Pro-Grip	30-3816e-V6s	225 lb.	R420010
1/16"	Pro-Lock	15-RI-S	60 lb.	R410060
1/16"	Pro-Grip	15-1420-S	60 lb.	
3/16"	Pro-Lock	50-R1-V6B (Black)	500 lb.	R410090
3/16"	Pro-Lock	50-RI-V3 (Silver)	500 lb.	R410070
3/16"	Pro-Grip	50-M12e-V3 (Silver)	500 lb.	
3/16"	Pro-Grip	50-M12e-V6B (Black)	500 lb.	
1/4"	Pro-Lock	80-RI-V6B (Black)	700 lb.	R410040
1/4"	Pro-Grip	80-M20e-V6B (Black)	700 lb.	

Not all available item numbers are shown.

Specialty Rigging

Banner, Drape, and Screen



6620 W. Arby Ave.
Las Vegas, NV 89118
(702) 631-4748 www.ihplabor.com



Pro-Banner Clamp

For 1" Click-Pipe or EMT, threaded for 1/4"-20, also a **Heavier Version** threaded for 3/8"-20. The working load limit for this clamp is 350lb. The actual load limit is based on the attachment's WLL.

Aluminum R160130
Black R160100



Pro-Safety Clamp

For Hanging Click-Pipe using Quick Links, Cable Loops, Carabiner, etc. WWL 75lbs. Available in both aluminum and black finish.



Click-Pipe

In addition to our Click-Pipe Kit, (Page 43), individual components are available for sale or rent.



Aluminum R160290
Black R160300

Pro-Pipe or Truss To Telerod

Used to hang pocketed Drape with Telerod (pipe and drape) to 1-1/2" stage batten pipe (1-1/2" schedule 40 black steel pipe) or aluminum Truss. Available in both aluminum and black finish.

Aluminum R160310
Black R160320



R160060 R160050
R160090 R160080

Pro-Screen Clamps (2 Models)

For 1" and 1-1/4" Fast-Fold Screen hanging applications, also fits steel or aluminum square tubing of the same sizes. The clamps are threaded for 3/8" x 16 external threads and are also sold with our Pro-Grip for 1/8" aircraft cable with full up and down adjustment.

Can also be used with a Forged Eye.



R160040
R160070



6620 W. Arby Ave.
Las Vegas, NV 89118
(702) 631-4748 www.ihplabor.com

STAGING

Platform/Legs/Wheels

STAGE-DECK PLATFORMS

Forkable Stage-Deck platforms are constructed using steel Truss frame with high quality 3/4" plywood tops. Standard deck can be used with 4 or 6 legs. Legs are made from 1-1/2" galvanized steel pipe. Decks are connected to each other by bolting through pre-drilled holes along each edge. Hand and Kick Rails are available.

DESCRIPTION	ITEM NO.
4' x 8' x 6" Deck	R370070
4' x 4' x 6" Deck	R370030
4' x 6' x 6" Deck	R370032
4' x 2' x 6" Deck	R370010
2' x 8' x 6" Deck	R370050
1' x 8' x 6" Deck	R370040
1' x 4' x 6" Deck	R370001
6' x 6' x 6" Deck	R370071



STAGE-DECK LEGS

Galvanized Steel Leg with adjustable foot.

The listed height includes platform thickness. The adjustment range available for uneven floors is from 0 to 6" in height.



DESCRIPTION	ITEM NO.
6" High Leg	R360006
12" High Leg	R360012
14" High Leg	R360014
16" High Leg	R360016
20" High Leg	R360020
24" High Leg	R360024
30" High Leg	R360030
36" High Leg	R360036
48" High Leg	R360048
60" High Leg	R360060

STAGE DECK CASTERS

These locking or non-locking 4 or 6" wheels replace Platform Legs to provide a rolling platform.

DESCRIPTION	ITEM NO.
Wheel Plate for Platform with 8" rise	R670023
Wheel Plate for Platform with 12" rise	R670023
Wheel Plate for Platform with 16" rise	R670023
Wheel Plate for Platform with 24" rise	R670023
Wheel Plate for Platform with 30" rise	R670023
Wheel Plate for Platform with 36" rise	R360211

In addition to our standard heights, custom heights are available. Offset and locking wheels are also available.



STAGING

Platform/Skirts/Rails



6620 W. Arby Ave.
Las Vegas, NV 89118
(702) 631-4748 www.ihplabor.com

PLATFORM SKIRTING

Black Pleated 8' or 4' wide.
Pleated Skirting has Velcro™ to attach to platform and additional sections of skirting.

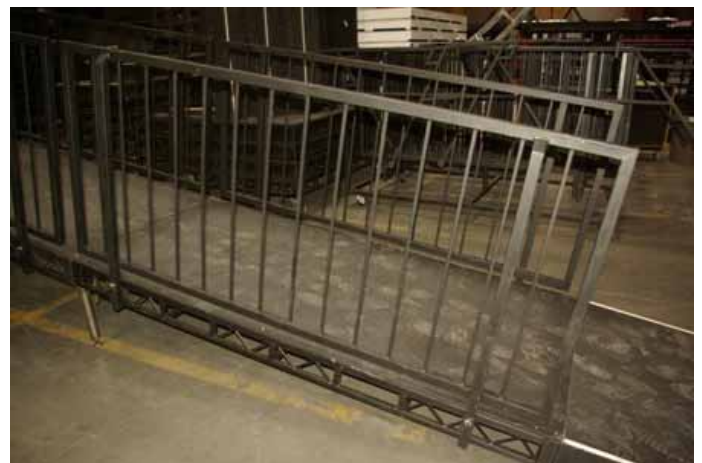


DESCRIPTION	ITEM NO.
4' Wide by 6" High	R371406
4' Wide by 12" High	R371412
4' Wide by 16" High	R371416
4' Wide by 2' High	R371424
4' Wide by 3' High	R371436
4' Wide by 4' High	R371448
4' Wide by 6' High	R371472
8' Wide by 6" High	R371806
8' Wide by 12" High	R371812
8' Wide by 16" High	R371816
8' Wide by 2' High	R371824
8' Wide by 3' High	R371836
8' Wide by 4' High	R371848
8' Wide by 6' High	R371872

STAGE-DECK RAILINGS

Deck rails bolt to Platforms, Ramps, and Stairs, for both looks, and safety. All rails are 41-1/2" high and meet all standards.

DESCRIPTION	ITEM NO.
8' Railing with 41.5" Vertical Bars	R360500
4' Railing with 41.5" Vertical Bars	R360520
3' Railing with 41.5" Vertical Bars	R360530
2' Railing with 41.5" Vertical Bars	R360540
8' Railing with 8' Horizontal Bars	R360510



PLATFORM KICK RAILS

In-House Production custom built kick rail bracket is designed to use 1" square tubing. The brackets bolt to the open edge of our Stage-Decks (the platform). They also provide a chair stop or keep items from rolling off platforms when our decks are used for orchestra setups.

Fits Stage-Deck



Kick Rail Bracket

DESCRIPTION	ITEM NO.
8' Long 1" Square Tubing	R360550
4' Long 1" Square Tubing	R360560
2' Long 1" Square Tubing	R360570
Kick Rail Bracket	R360590



6620 W. Arby Ave.
Las Vegas, NV 89118
(702) 631-4748 www.ihplabor.com

STAGING

Stairs/Steps/Jacks

STEEL FRAME STEPS

Single section stairs and railings for 4' high Stage-Deck platforms.

DESCRIPTION	ITEM NO.
5 Step 4' Rise	R370120



WOOD PLATFORM STEPS



Hand Rails are available upon request

DESCRIPTION	ITEM NO.
1 Step 35" x 24"	R370080
2 Step 24" x 16"	R370085
3 Step 36" x 24"	R370090
4 Step 48" x 32"	R370100
4 Step 48" x 29"	R370099
8 Step 95.5" x 64", 3 piece Set	R370110

SCAFFOLD LEVELING JACK

Welded Base Plate

This leveling Jack is made of all steel and has a 5" x 5" welded base plate. It is 24" tall with 18" of adjustment. The threaded shaft is 1-3/8" diameter.

Can be used with Stage-Deck Platform Legs to take the work out of Leveling Platforms, Truss, or anything on uneven ground.

DESCRIPTION	ITEM NO.
Leveling Jack	R460199



STAGING

Dollies



6620 W. Arby Ave.
Las Vegas, NV 89118
(702) 631-4748 www.ihplabor.com

HEAVY DUTY DOLLY



3' x 4' with 8" wheels.
These Dollies are rated at 3,000lb. capacity.

DESCRIPTION	ITEM NO.
Heavy Duty Dolly	R600000

FURNITURE DOLLY

Carpeted surfaces protect finishes. 3" x 1" swivel caster and a heavy-duty hardwood frame can handle up to 500lb.

DESCRIPTION	ITEM NO.
Furniture Dolly	R600020



FURNITURE DOLLY, DOLLY



Furniture Dolly, Dolly is designed to stack and keep track of Convention/Furniture Dollies. They hold up to 16 Dollies, keeping them organized, and from falling over at show site, or in your warehouse. Custom Built Dollies for Sale or Rent. Our color is Yellow. What is your Color?

DESCRIPTION	ITEM NO.
Furniture Dolly, Dolly	R600021



6620 W. Arby Ave.
Las Vegas, NV 89118
(702) 631-4748 www.ihplabor.com

STAGING Dollies

STAND UP TRUSS DOLLY

The Heavy Duty Steel Dolly with 8" wheels is adapted to bolt square 12" x 12", 20.5" x 20.5", Truss.

Example: a large screen or backdrop, an arch, a goalpost, a light tree, or whatever you can imagine can be rolled into place and removed with ease.

These Dolly's are rated at 3,000 lb.



DESCRIPTION	ITEM NO.
3' x 4' Dolly with Brackets for 12" x 12" Truss	R510174

TRUSS STACKERS AND DOLLY

4' x 4' Dolly provides non-slip transport of Truss. The Separator holds Truss apart when stacking Truss.

Separator can be used with 12" or 20.5" Truss.

Dolly can also be used with or without transport Truss Separator.

Adding a 4' x 4' plywood top to this dolly, it can be used for product display and transport.



12" or 20.5" Truss Separator



Double Sided

DESCRIPTION	ITEM NO.
Dolly with Separator	R510170
12" x 12" Separator	R510171
20.5" x 20.5" Separator	R510172

STAGING

Accessories



6620 W. Arby Ave.
Las Vegas, NV 89118
(702) 631-4748 www.ihplabor.com

WARDROBE RACK

Z-Frame

This garment rack has a 5' Z-Frame base and 5' uprights. The load capacity is 350lb, enough to hold a rack full of your heaviest garments. It comes with 4" professional grade, swivel casters with non-marring rubber wheels, and two wheel brakes for extra safety. The Z base is powder coated safety orange for a durable finish. The hang bar and uprights are chrome plated steel.



DESCRIPTION	ITEM NO.
Z-Frame Wardrobe Rack	R230001

CHAIRS



Swirl backed, metal construction padded chair, in white, or black, for Artist use on stage.

White Metal Chair with white seat pad, with 4 lifting points to Fly Performer.



DESCRIPTION	ITEM NO.
White, Padded Swirl Back Cast Chair	R320610
Black, Padded, Swirl Back Cast Chair	R320611
White, Metal, Flying Chair	R320600



6620 W. Arby Ave.
Las Vegas, NV 89118
(702) 631-4748 www.ihplabor.com

STAGING

Accessories



MANHASSET SYMPHONY MUSIC STAND

The Manhasset's Model No. 48, Symphony Music Stand desk is 20", wide by 12-1/2" high with a 2-1/4" lip. The height of this music stand varies infinitely from 26" to 48" (lip to floor), with a maximum overall height of 60-1/2".

DESCRIPTION	ITEM NO.
Music Stand M#48	R320010

SAND BAGS


Approximate weight 30lb.

In House Production Sand Bags are made from black canvass, measuring 16" x 15". These double pocket bags with a handle can be used wherever additional weight is required to prevent tipping or rolling of stage equipment.

DESCRIPTION	ITEM NO.
Sand Bags	R320101



STAGING TOOLS

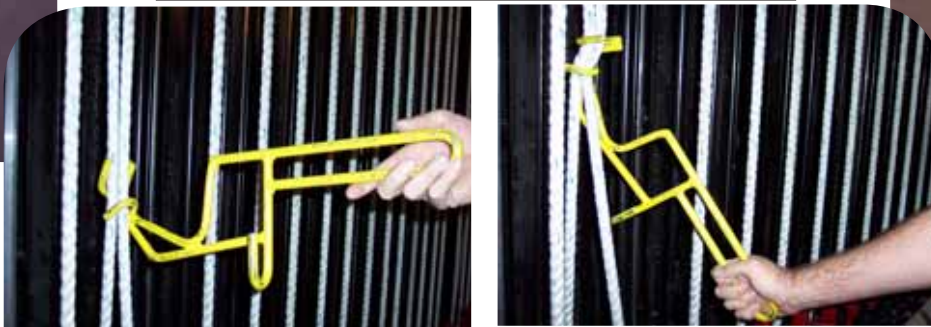

 6620 W. Arby Ave.
 Las Vegas, NV 89118
 (702) 631-4748 www.ihplabor.com



Rope Lock

A simple, safe tool to replace the “snub knot” and be sure the arbor and pipe do not move while loading or unloading the counter weight. Like a “snub knot, this tool can be used to control movement with an imbalance. The maximum imbalance must not exceed 75lb.

DESCRIPTION	ITEM NO.
Rope Lock	R160250



Available in both left or right hand versions.



Cross Grid Connector

Provides a rigid low profile connection for assembling pipe grids of 1-1/2” schedule 40 pipe. Pipes can be added or removed in place, without sliding them in from the ends. Half of the assembly can also be used to secure a 1-1/2” schedule 40 pipe to any flat surface.

DESCRIPTION	ITEM NO.
Cross Grid Connector	R160202

Pipe Clamp

Provides a secure connection to 1-1/2” schedule 40 pipes when suspended from a working or static grid.

DESCRIPTION	ITEM NO.
Pipe Clamp	R160270



Grid Pipe/Spreader Pipe

Simple tool to hang a heavy load from a steel theater grid. This 4” x 4’ pipe spans the grid steel allowing a Round or Cable Sling to hang between grid slats and distributes weight to the grid without risk of chafing or cutting the Round or Cable Sling.

DESCRIPTION	ITEM NO.
Grid Pipe/Spreader Pipe	R160280



6620 W. Arby Ave.
Las Vegas, NV 89118
(702) 631-4748 www.ihplabor.com

DISPLAY SYSTEMS

Pipe & Drape

Exhibit Booth Pole and Drape

In-House Production has your exhibit booth needs with our selection of Pole and Drape components. We stock black 4' x 8', 10', or 12' Banjo Cloth - Flame Resistant (this material is widely used in the trade show industry, has a woven texture surface and a shine to it.) This material is also available in yellow.

Standard uprights available from stock are 12' and two piece adjustable from 12' to 16'.

DESCRIPTION	ITEM NO.
Telescopic Drape Support 8'-14'	R340040
Telescopic Drape Support 6'-10'	R340041
Adjustable Upright 8' - 14'	R340050
Adjustable Upright 6' - 10'	R340051
Standard Base Plate	R340065
18" x 18" Base Plate w/2"x6" w/Pin	R340060
P&D Blue 12' x 4.5' Commando	R340090
P&D Black Duvetyn 12' x 4.5'	R340070

Adjustable Upright

2 PIECE MODELS

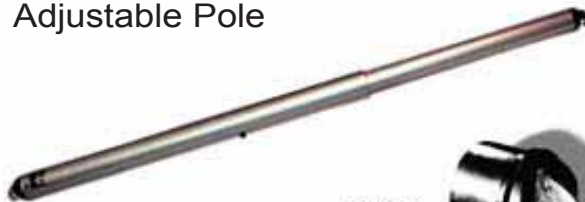
1-5/8" Tube

3 PIECE MODELS

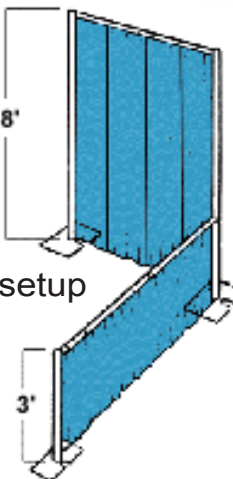
1-13/16" Tube

2" Tube requires 2" diameter pin

Adjustable Pole



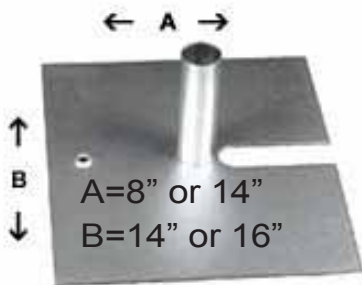
HOOK DESIGN



Sample Booth setup

Deep hook design minimizes accidental removal from uprights. Low profile will not snag drapes during installation or removal.

Stacking Base Plate



24"x 24" Base Plate

DISPLAY SYSTEMS

Clic-Pipe



6620 W. Arby Ave.
Las Vegas, NV 89118
(702) 631-4748 www.ihplabor.com

CLIC-PIPE ALL-IN-ONE KITS



Click-Pipe
Examples

IMAGINE
all the possibilities with
CLIC-PIPE!

DESCRIPTION	ITEM NO.
300 Piece CLIC-PIPE Kit	R170143

Individual components are for sale

Click-Pipe

Is constructed from 1" OD 16 Gage Steel Mechanical Tubing and is drilled to accept the locking pin of 10" long insert.

Click-Pipe is available in standard lengths: 6"; 1'; 2'; 3'; 4'; 5'; and 10'; All other lengths are custom made.



Applications

- Match pipe length to banner when hanging banners
- Save time over threaded connections
- Quickly snap together bottom pipe length to fit drops
- Quick booth frames
- Custom projection screen frames
- Create quick change room

IMAGINE
all that you can do with
CLIC-PIPE!

Nunchucks



22.5 Maximum Degree Adjustable Angles
Specialty designed and constructed hinged fittings allow your designer the ability to hang or construct rigid frames and angled pipe for your banners, drapery, signs or screens.



6620 W. Arby Ave.
Las Vegas, NV 89118
(702) 631-4748 www.ihplabor.com

CUSTOM FABRICATION

FURNITURE DOLLY, DOLLY



Furniture Dolly, Dolly is designed to stack and keep track of Convention/Furniture Dollies. They hold up to 16 Dollies, keeping them organized, and from falling over at the show site, or in your warehouse.

Custom Built Dollies for Sale or Rent.
Our color is Yellow.
What is your Color?




HEAVY DUTY STACKABLE STORAGE

Heavy Duty Stackable Storage bins available, in stock sizes, or custom sizes on request. We use these to store our Rigging Hardware, Store your Rigging, Sandbags, Electrical or Whatever Parts you may need to store. These bins have clearance to permit Forklift or Pallet Jack Handling.

Heavy Duty Stackable Storage Bins are made from 1-1/2" x 1-1/2" x 065 tubes with wire mesh welded to sides. Front is lowered for ease of access into bin.



CUSTOM FABRICATION

 6620 W. Arby Ave.
Las Vegas, NV 89118
(702) 631-4748 www.ihplabor.com

CUSTOM FABRICATION

The items shown on this page represent some of the engineering our specialists have developed to help our clients with their needs.

TV Stand, Designed to Hang Large Dolby Monitor

In-House Production Fabricated this TV Stand to hang a large Dolby Monitor.
Our Experts can make **anything** you need for that perfect presentation.



Arbor Assist, Change-Over Winch



Originally designed for the Lance Burton Theater to provide a safe method to assist and control the in-balance of the Counterweight Arbor during the load-in and load- out process. The Chain Hoist can be connected to any Counterweight Arbor.

The weight of chain in the air (approximately 1lb. per foot) must be considered in balancing the Arbor and flown scenery weight. The unbalanced weight is factored into the 2,000 lb. capacity of this winch.



6620 W. Arby Ave.
Las Vegas, NV 89118
(702) 631-4748 www.ihplabor.com

IMAGINEERING

At your next Party, you want a **LARGE VIDEO SCREEN** above the crowd. In-House Production has the equipment and expertise to hang a Video Wall anywhere!



In-House Production has the equipment and expertise to provide Staging and Ground Support Systems. We provide the Rigging and Staging, you provide the "Talent".



IMAGINEERING

IN-HOUSE 6620 W. Arby Ave.
PRODUCTION Las Vegas, NV 89118
(702) 631-4748 www.ihplabor.com



In-House Production Shop/Warehouse





6620 W. Arby Ave.
Las Vegas, NV 89118
(702) 631-4748 www.ihplabor.com

IMAGINEERING



MACHO-MACHO TRUSS

Newest addition to our available Truss sizes.



Global RallyCross LV Start Line

This picture is just one example of what can be done with our Extra Heavy Duty Macho-Macho Truss. This addition to our Inventory will compliment your Grand Event.

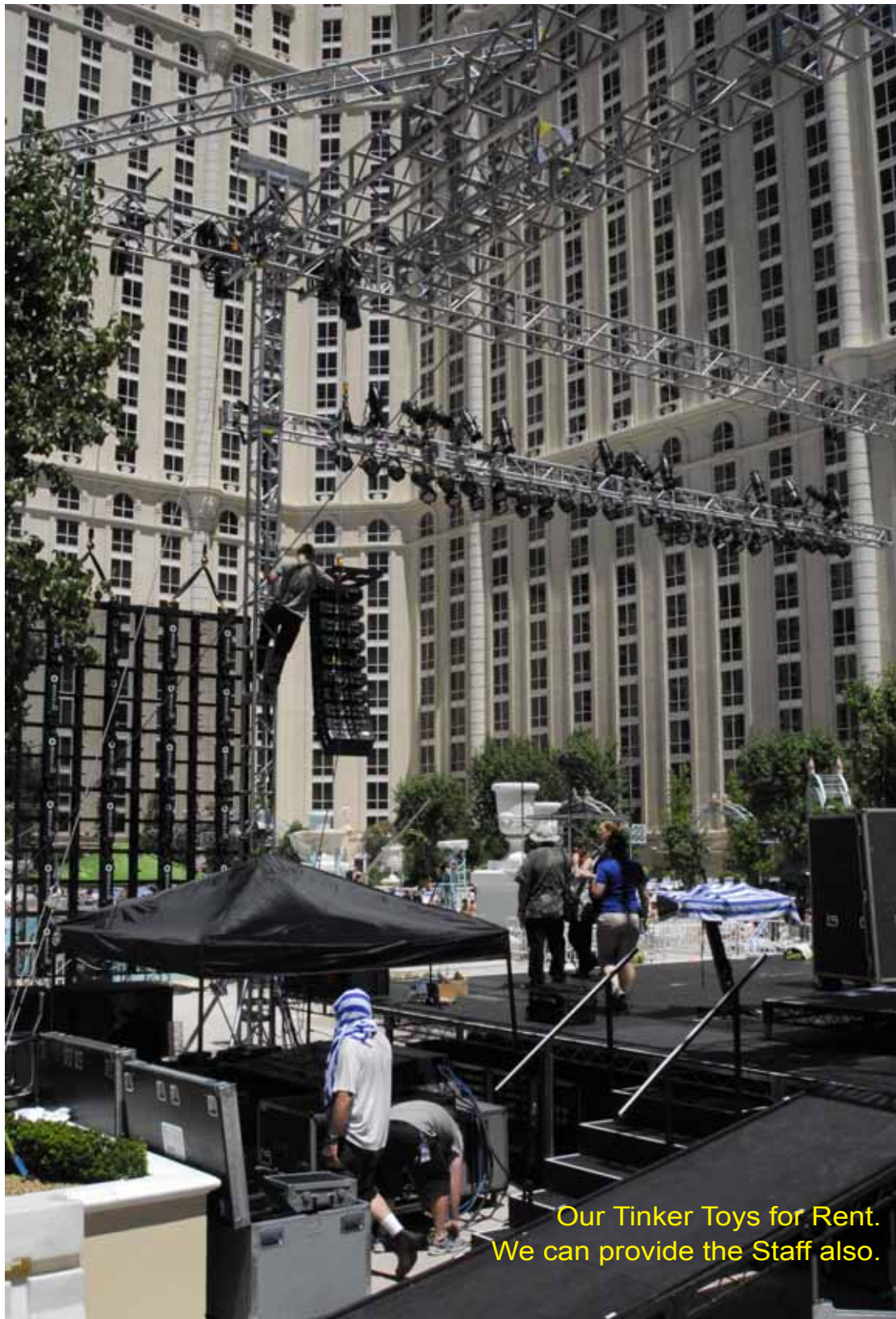
94' Clear Span
15' to bottom of Truss
Tower is 30" Square by 20' Tall,
Truss sections are 36" Square by 10' long





6620 W. Arby Ave.
Las Vegas, NV 89118
(702) 631-4748 www.ihplabor.com

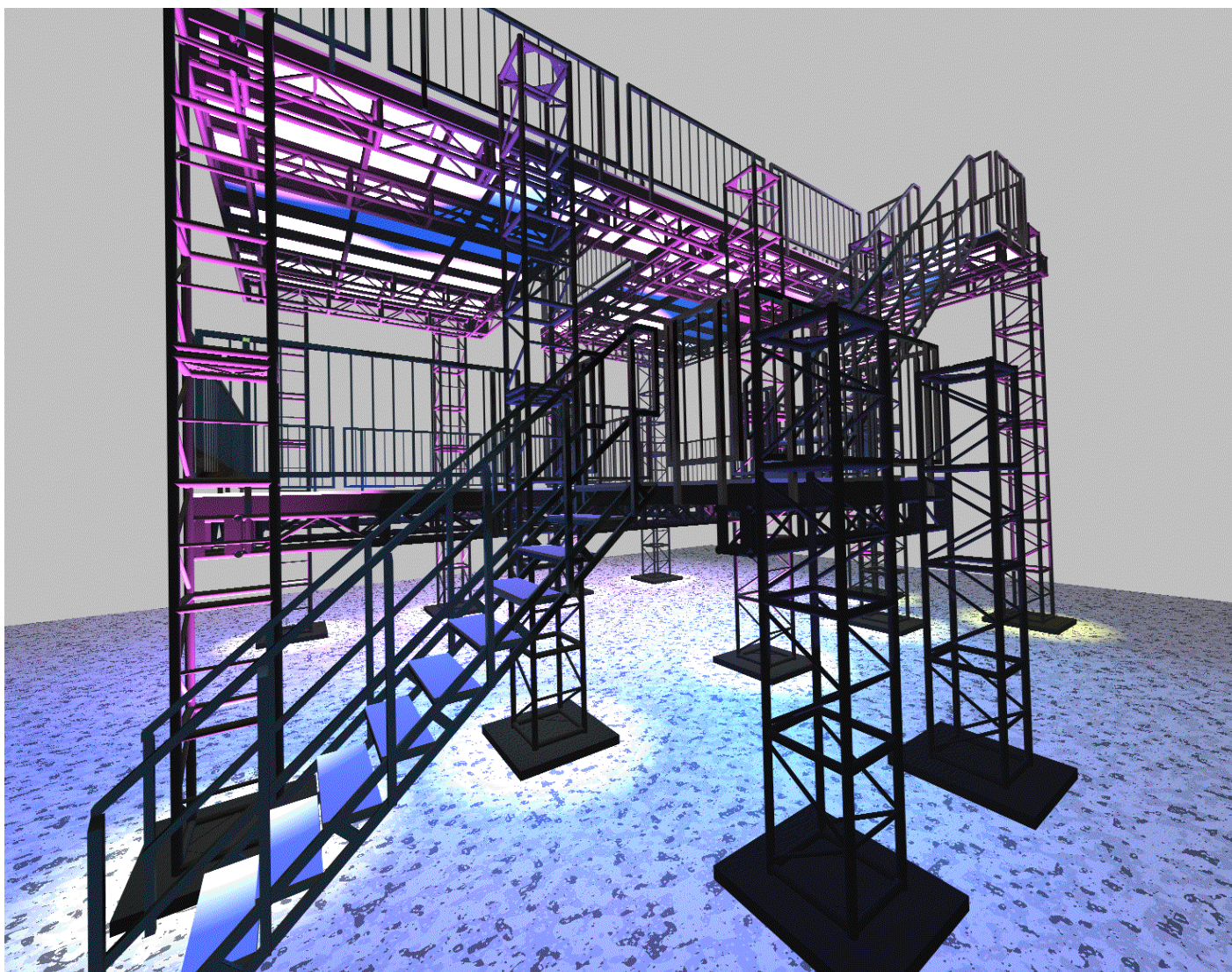
IMAGINEERING



Our Tinker Toys for Rent.
We can provide the Staff also.



IDEAS!



In-House Production, Truss and Platforms are like Tinker Toys to kids.
What combination do you desire?



BOOM-LIFT



FORKLIFT

SCISSOR-LIFT



Have
**IN-HOUSE
PRODUCTION**
do your OSHA
Compliance Lift Training

OSHA Compliance Lift
Trainers
available for
Classes & Seminars
for individuals, groups &
companies.

RENTAL & SALES

MATERIAL HANG SYSTEMS

Banner Poles
Banner Pole Clamps
Telerod Truss Clamps



RIGGING HARDWARE

Truss / Chain Motors
Lighting / Staging
Sheaves / Clamps



www.inplabor.com

IN-HOUSE



PRODUCTION



Call us for your

**Stage Labor, Payroll Support,
Rental Supply**

Phone (702) 631-4748, Toll Free (888) 631-4748

www.ihplabor.com

6620 W Arby Ave, Las Vegas, NV 89118