

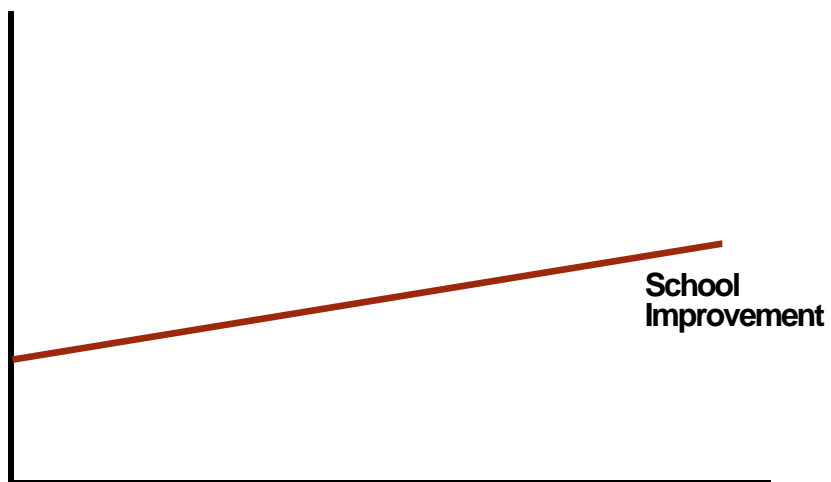


International Center for
Leadership in Education

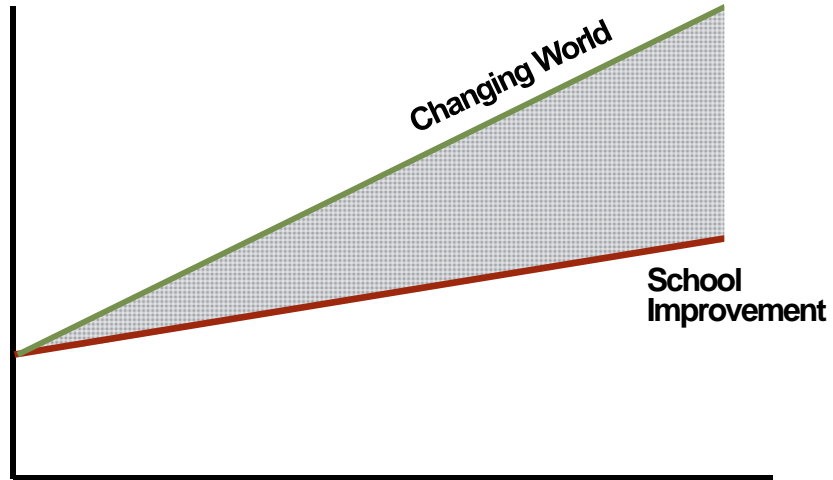
Rigor and Relevance for ALL Students

Bill Daggett
Founder and Chairman
October 22, 2015

Growing Gap

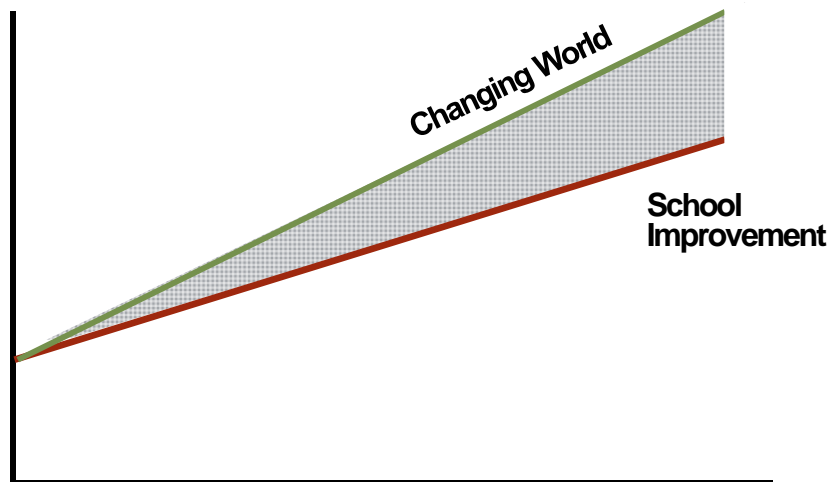


Growing Gap

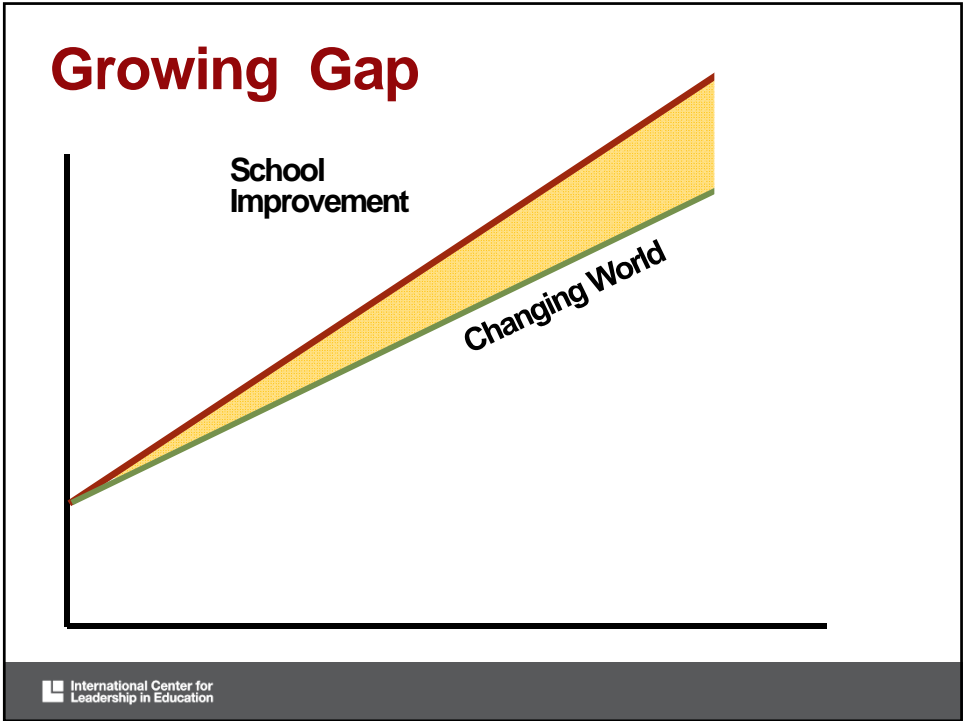


International Center for
Leadership in Education

Growing Gap



International Center for
Leadership in Education



1. Knowledge in one discipline
 2. Application within discipline
 3. Application across disciplines
 4. Application to real-world predictable situations
 5. Application to real-world unpredictable situations
-
- International Center for Leadership in Education

Two Approaches to School Improvement



 International Center for Leadership in Education

Two Approaches to School Improvement

Fixed Mindset

Growth Mindset

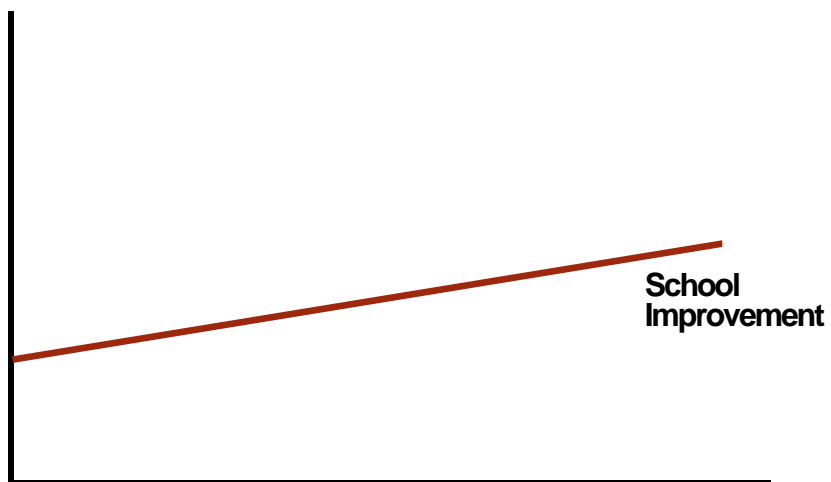


 International Center for Leadership in Education

Fixed Mindset

International Center for
Leadership in Education

Fixed Mindset

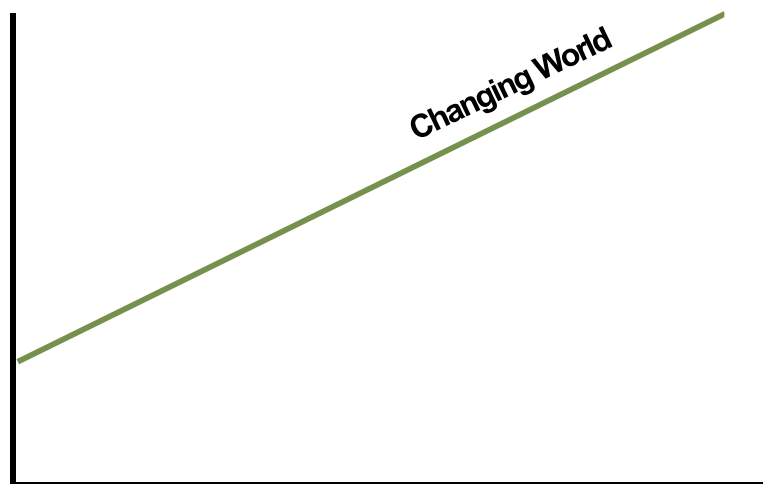


International Center for
Leadership in Education

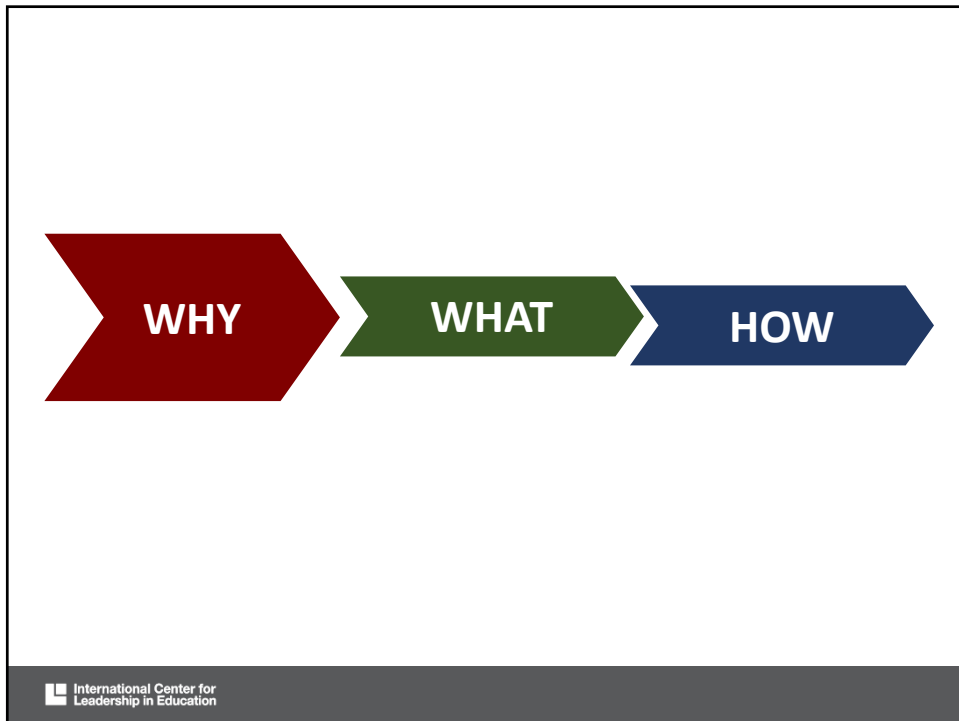
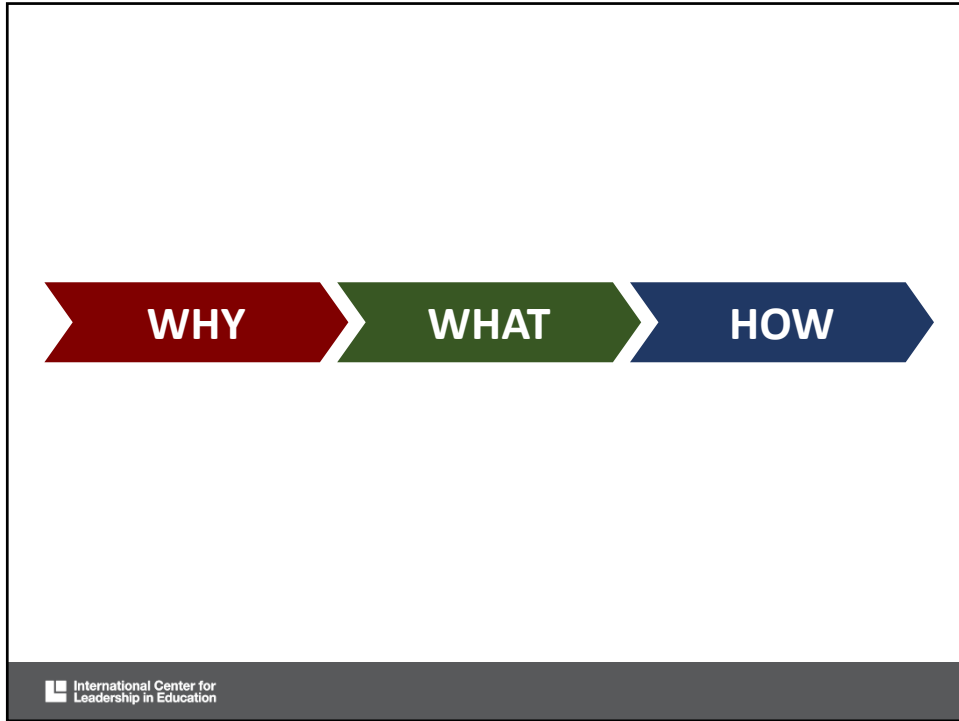
Growth Mindset

 International Center for
Leadership in Education

Growth Mindset



 International Center for
Leadership in Education



Powerpoint, Notes, and More Information

VISIT:

<http://leadered.com/billdaggett>

OR SCAN:



iphone

Pencil Budget

The Order of Things Have Changed

Uber- The world's largest taxi company, owns
no vehicles

Facebook- The world's most popular media
owner, creates no content

Alibaba- The world's most valuable retailer,
has no merchandise

Airbnb- The world's largest accommodation
provider, owns no real estate

But schools are still schools!

Emerging Trends

Web

- 1.0 – Informational



Web

- 1.0 – Informational
 - Google



Web

- 1.0 – Informational
- 2.0 – Relational



Web

- 1.0 – Informational
- 2.0 – Relational
- 3.0 – Anticipatory



Web

- 1.0 – Informational
- 2.0 – Relational
- 3.0 – Anticipatory
 - Artificial Intelligence



Web

- 1.0 – Informational
- 2.0 – Relational
- 3.0 – Anticipatory
 - Artificial Intelligence
 - Deep Data Mining



Web

- 1.0 – Informational
- 2.0 – Relational
- 3.0 – Anticipatory
 - Artificial Intelligence
 - Deep Data Mining
 - Google > Ads

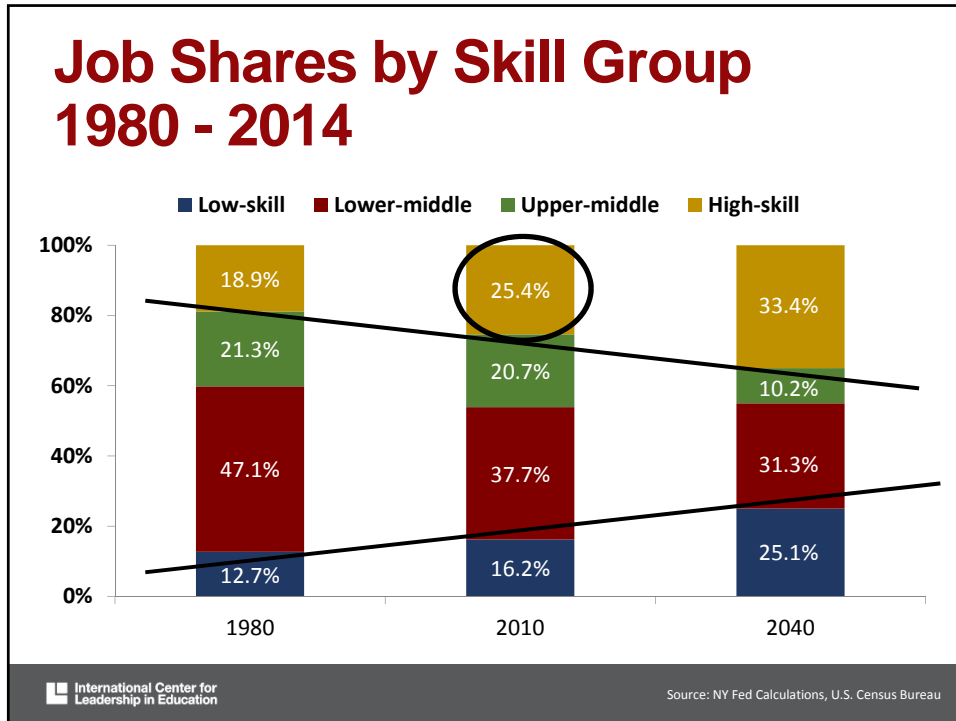


Web

- 1.0 – Informational
- 2.0 – Relational
- 3.0 – Anticipatory
 - Artificial Intelligence
 - Deep Data Mining
 - Google > Ads
 - Gmail > Ads

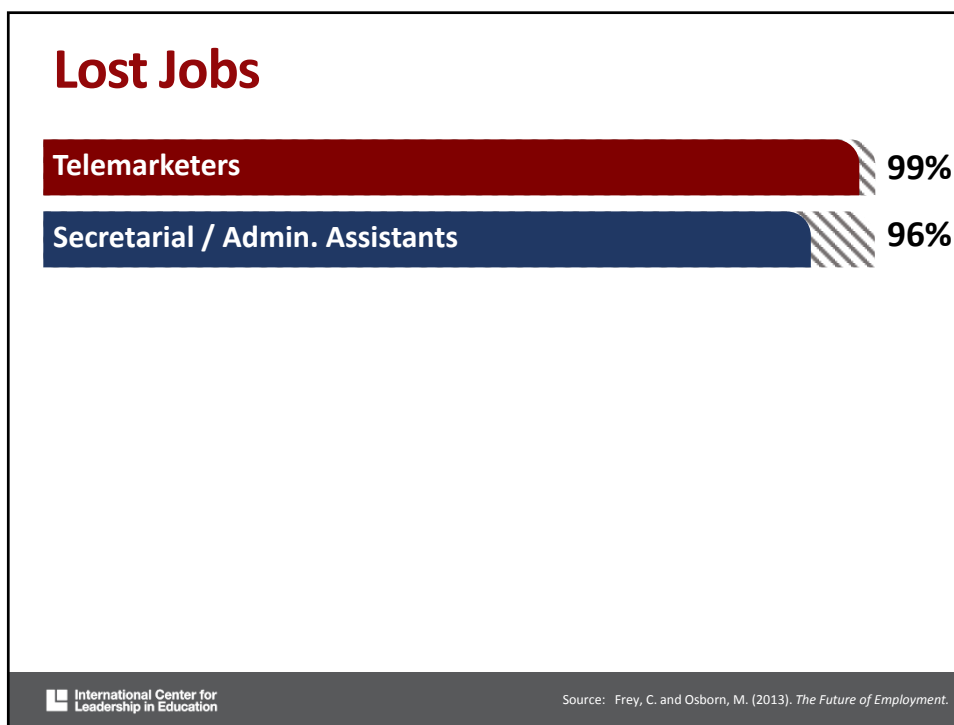


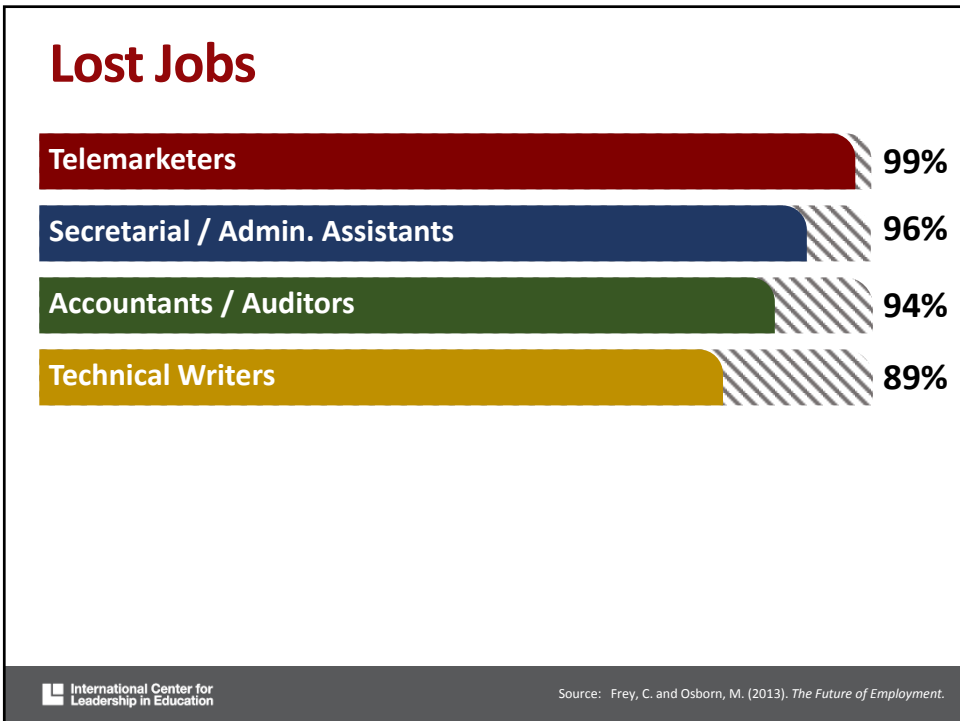
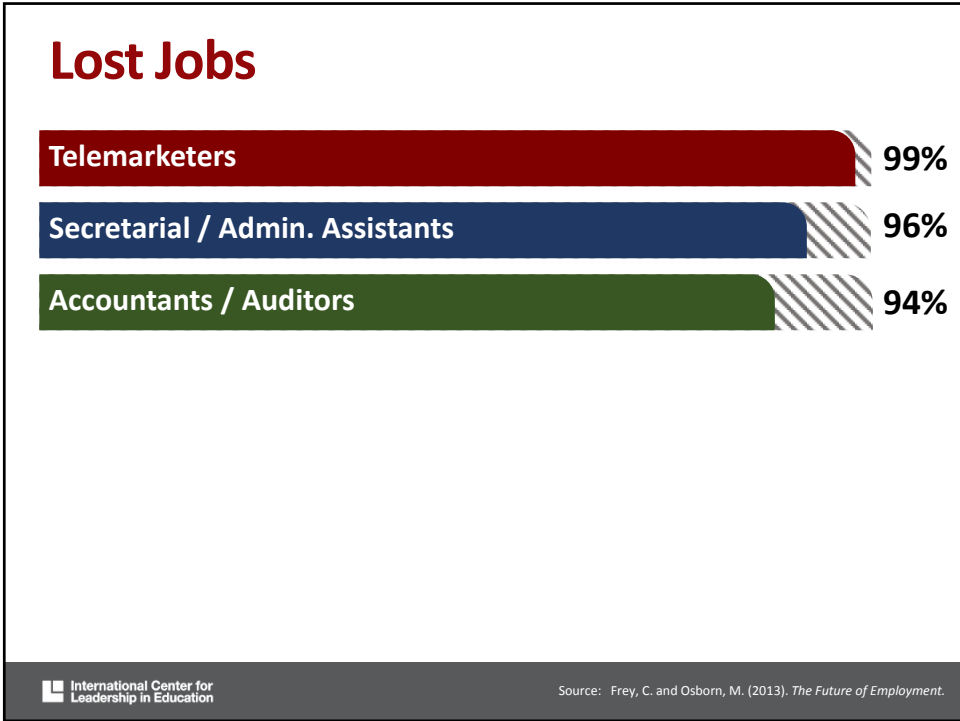
Career Ready

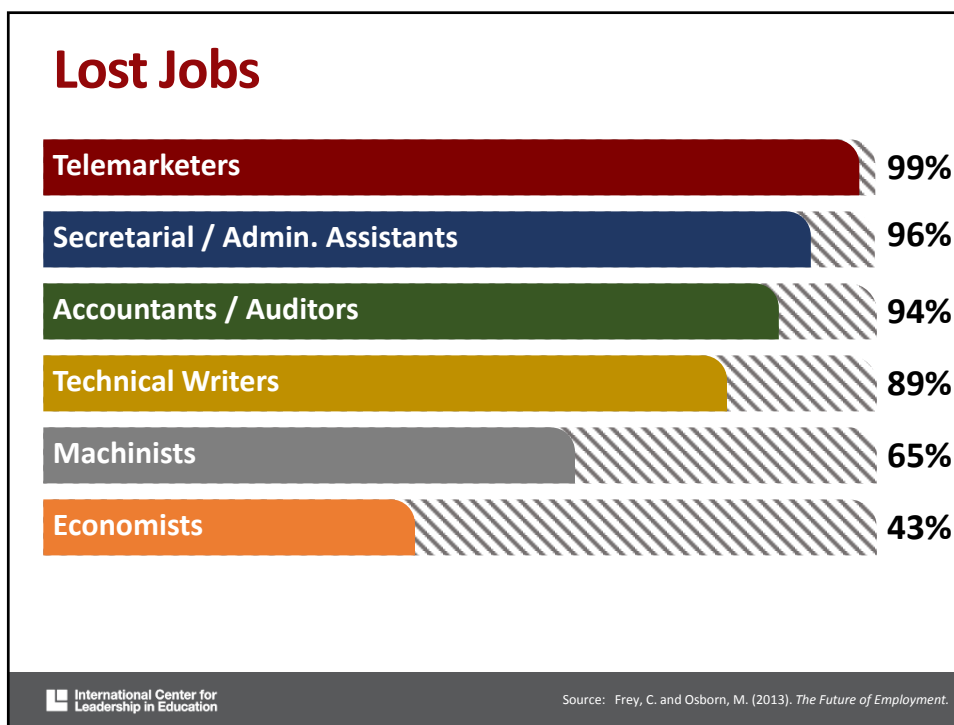
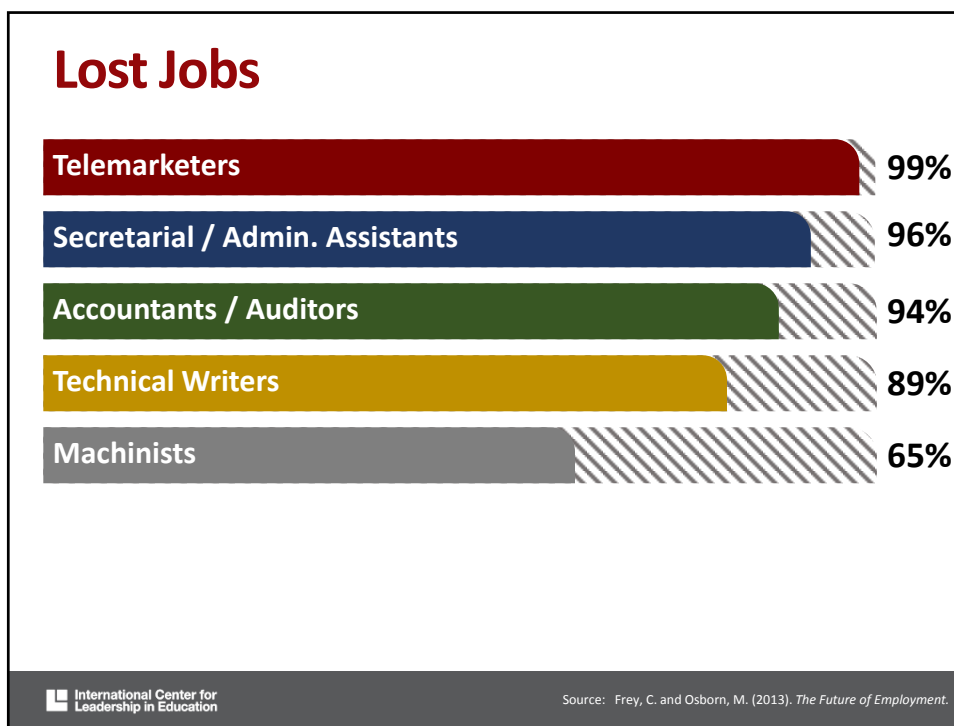


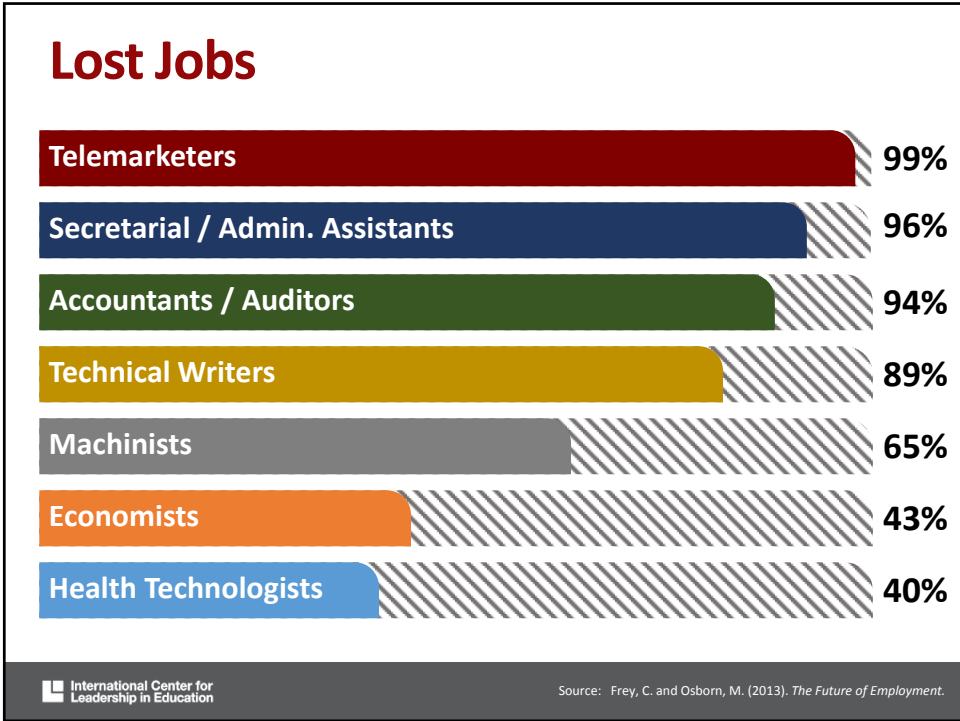
Lost Jobs

International Center for Leadership in Education









13 Million Americans Are Unemployed

**BUT 3.8 Million Jobs in the U.S.
Remain Unfilled**

International Center for Leadership in Education

Your Major Matters A LOT

 International Center for
Leadership in Education

Bachelor's Degrees

1. Business

2. General Studies

3. Social Science and History

4. Psychology

5. Health Professions

6. Education

7. Visual and Performing Arts

8. Engineering and Technology

9. Communications and
Journalism

10. Computer and Information
Science

 International Center for
Leadership in Education

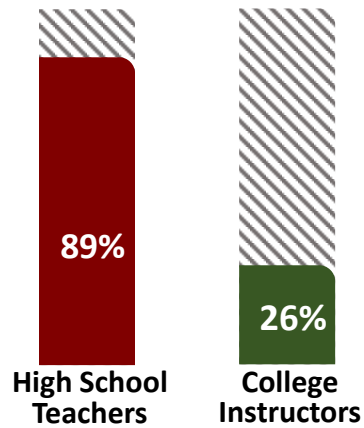
Source: National Center for Education Statistics

Bachelor's Degrees



College Ready

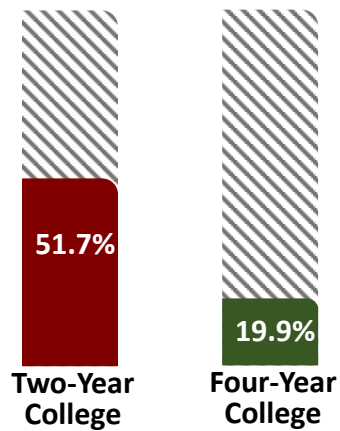
College Freshmen Well- or Very Well-Prepared



International Center for
Leadership in Education

Source: http://www.highereducation.org/reports/college_readiness/gap.shtml

Freshmen Needing Remediation



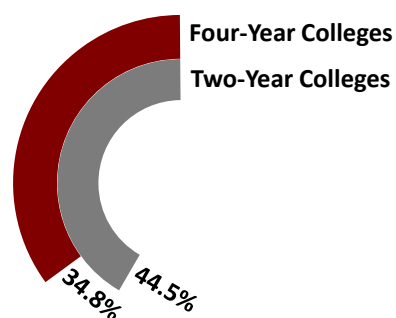
International Center for
Leadership in Education

Source: http://www.highereducation.org/reports/college_readiness/gap.shtml

College Dropout Rate

2014

First to Second Year



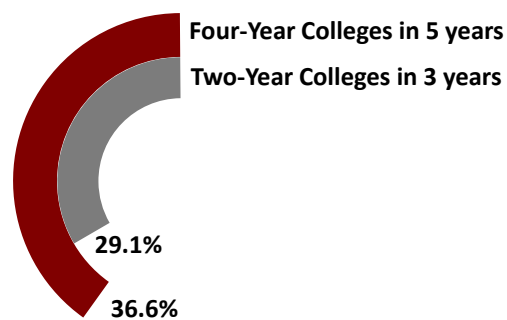
 International Center for Leadership in Education

Source: <http://www.air.org/sites/default/files/downloads/report/AIR-CALDER-Understanding-the-College-Dropout-Population-Jan14.pdf>

Average Graduation Rate

1983 - 2014

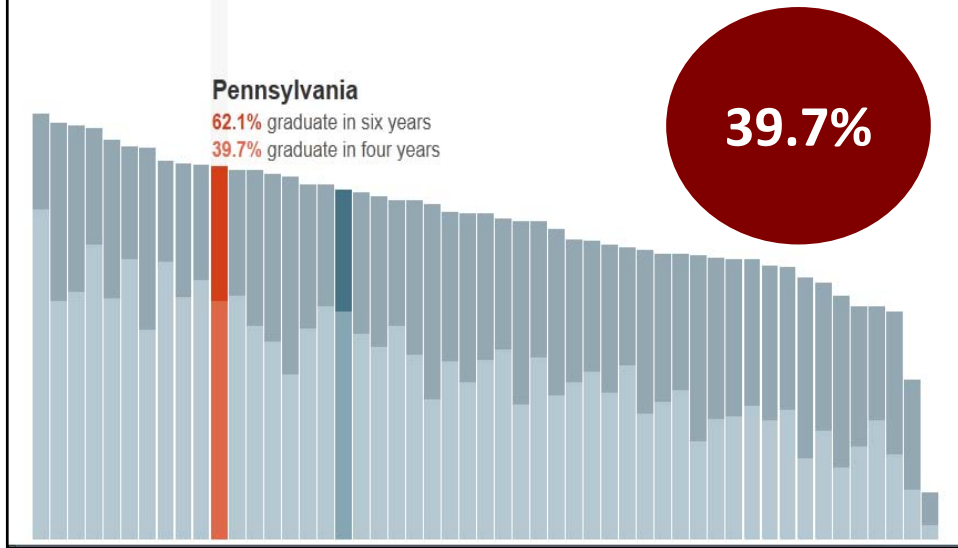
1983 - 2014



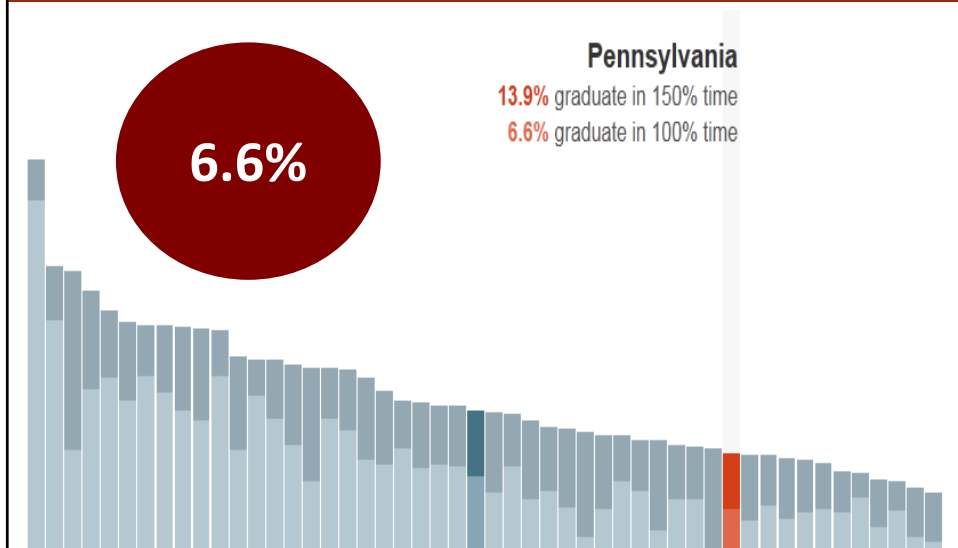
 International Center for Leadership in Education

Source: <http://www.air.org/sites/default/files/downloads/report/AIR-CALDER-Understanding-the-College-Dropout-Population-Jan14.pdf>

Pennsylvania 4 Year Public College



Pennsylvania 2 Year Public College



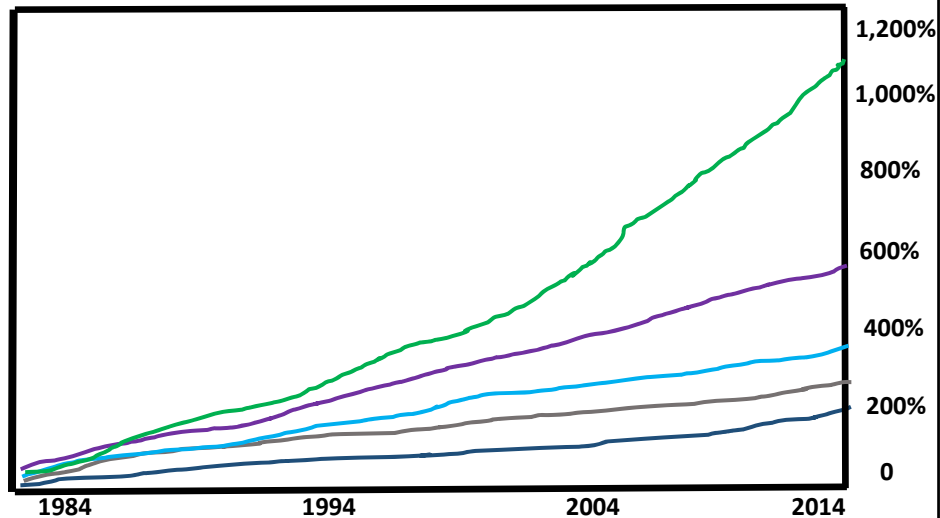
College tuition rates have increased, on average, at twice the rate of inflation in the past 17 years.

International Center for Leadership in Education

Source: ACT

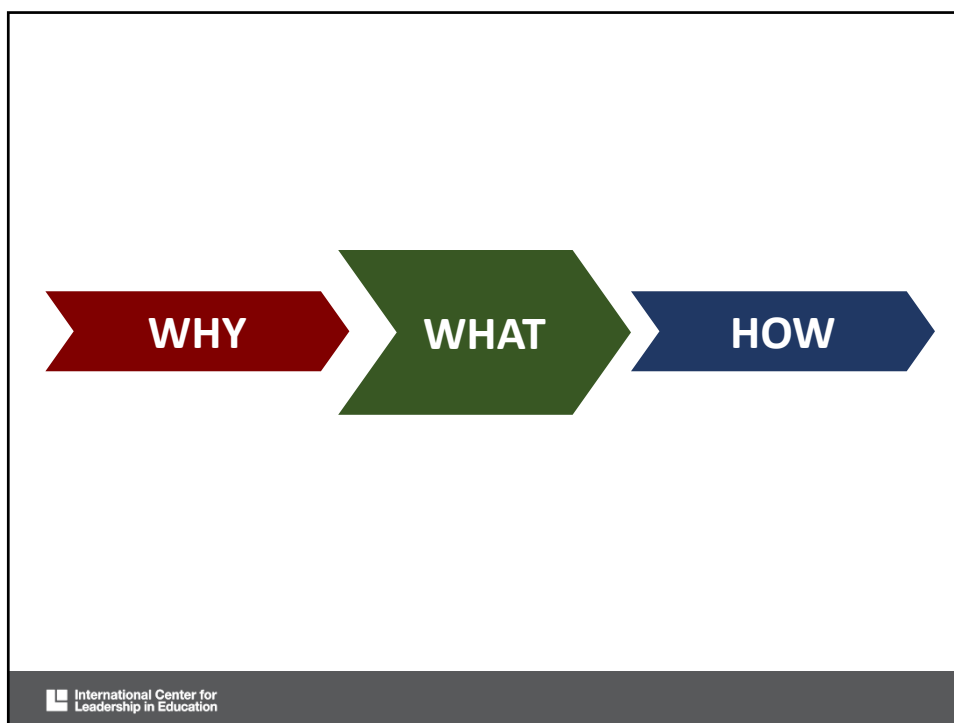
Percent Change Since January 1984

- College
- Medicare
- Shelter
- Consumer Price Index
- Food



International Center for Leadership in Education

Source: Insert Here



Rigor and Relevance for ALL Students

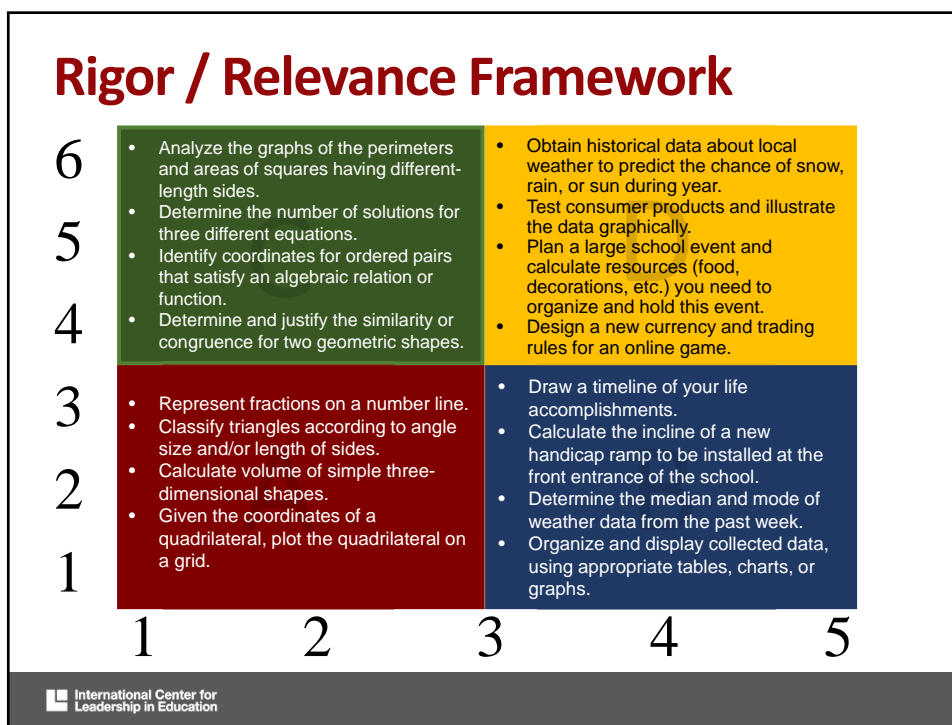
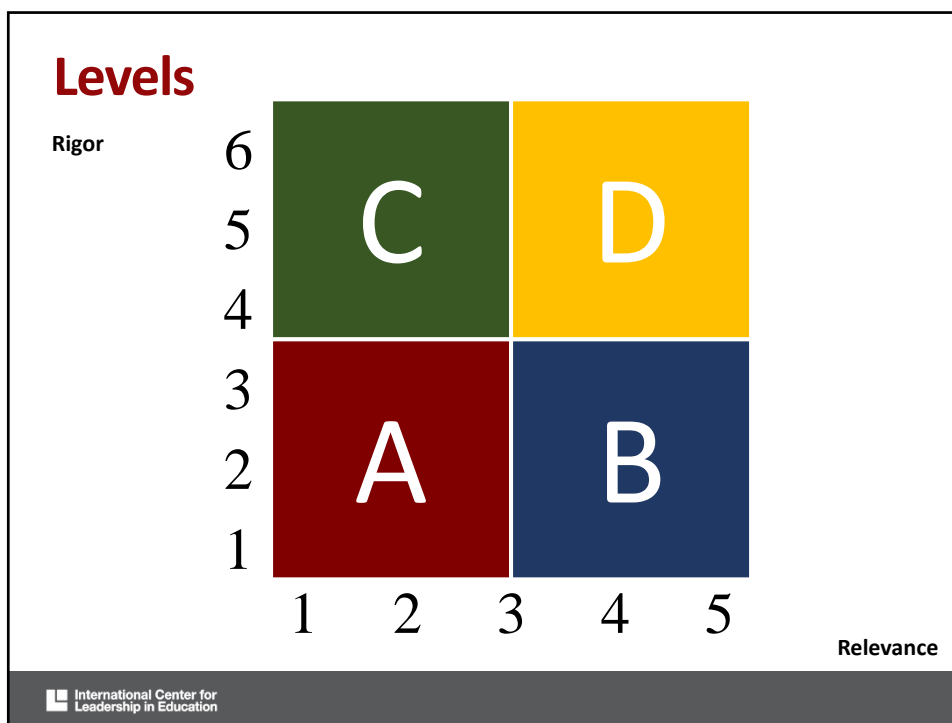
International Center for Leadership in Education

Application Model

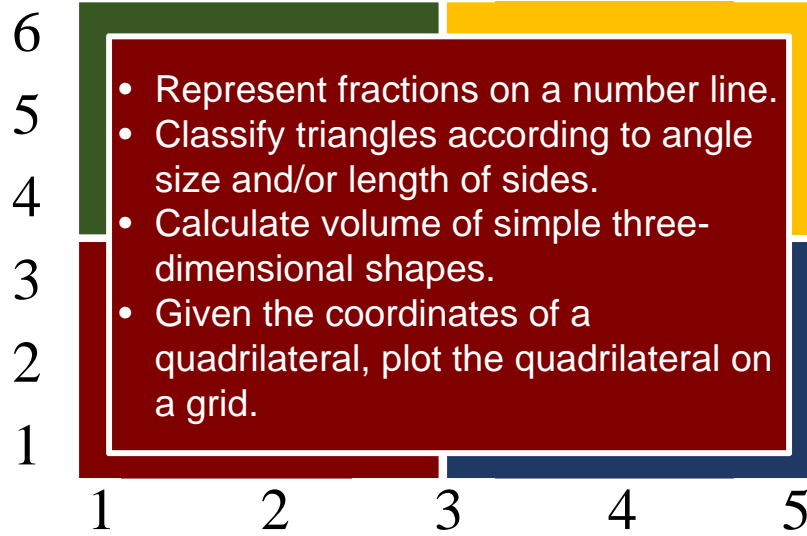
1. Knowledge in one discipline
2. Application within discipline
3. Application across disciplines
4. Application to real-world predictable situations
5. Application to real-world unpredictable situations

Knowledge Taxonomy

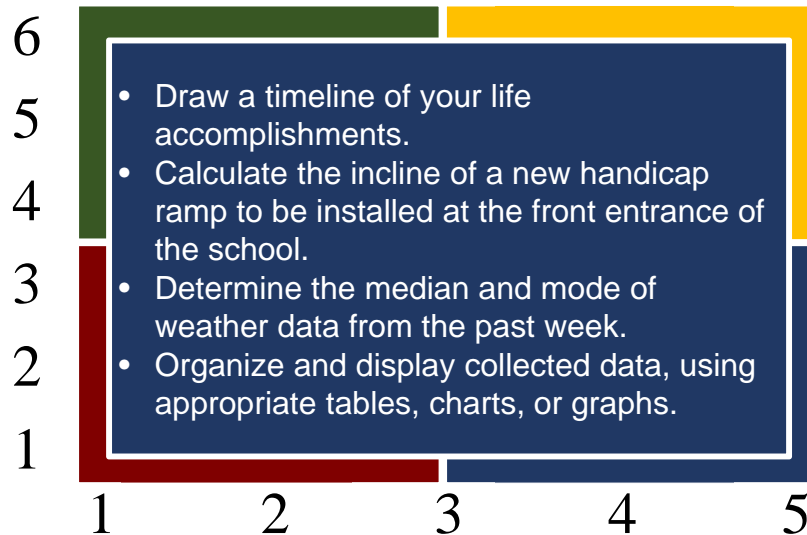
1. Remembering
2. Understanding
3. Applying
4. Analyzing
5. Evaluating
6. Creating

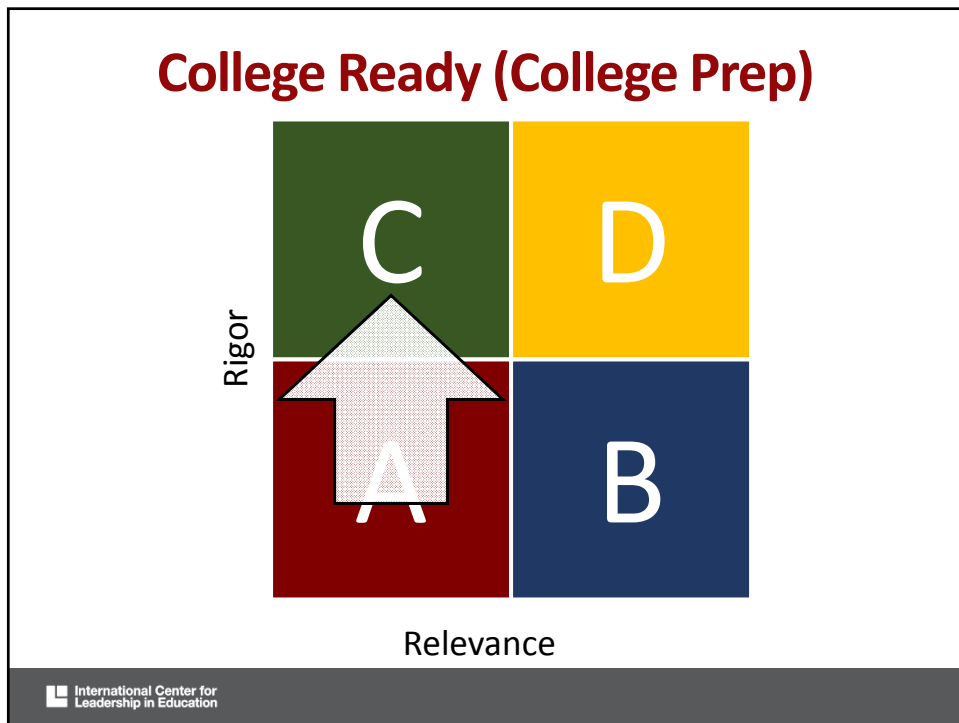
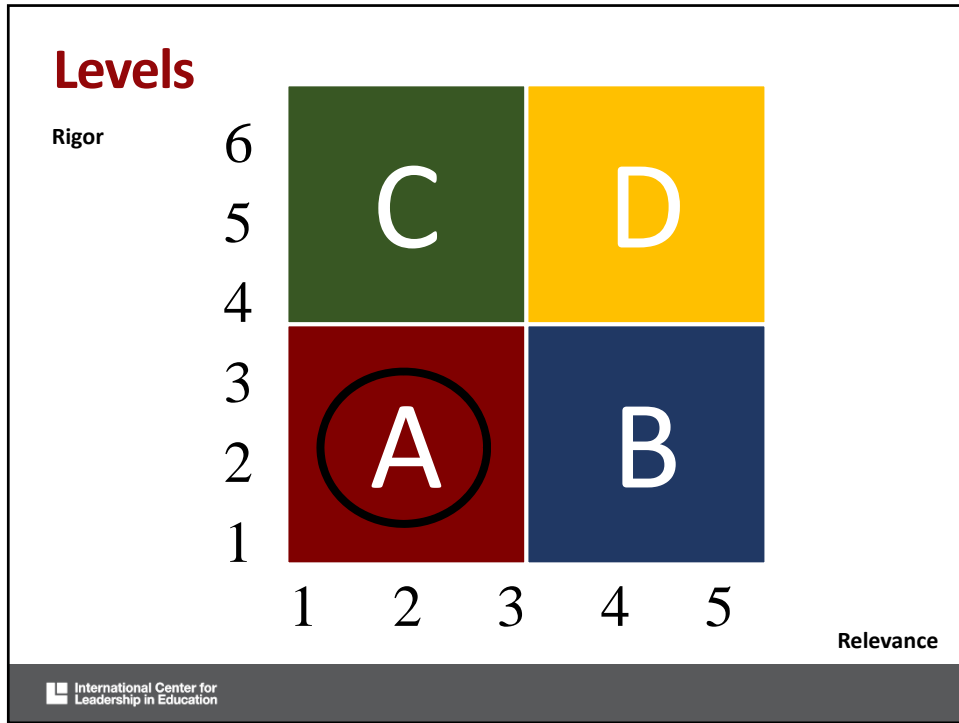


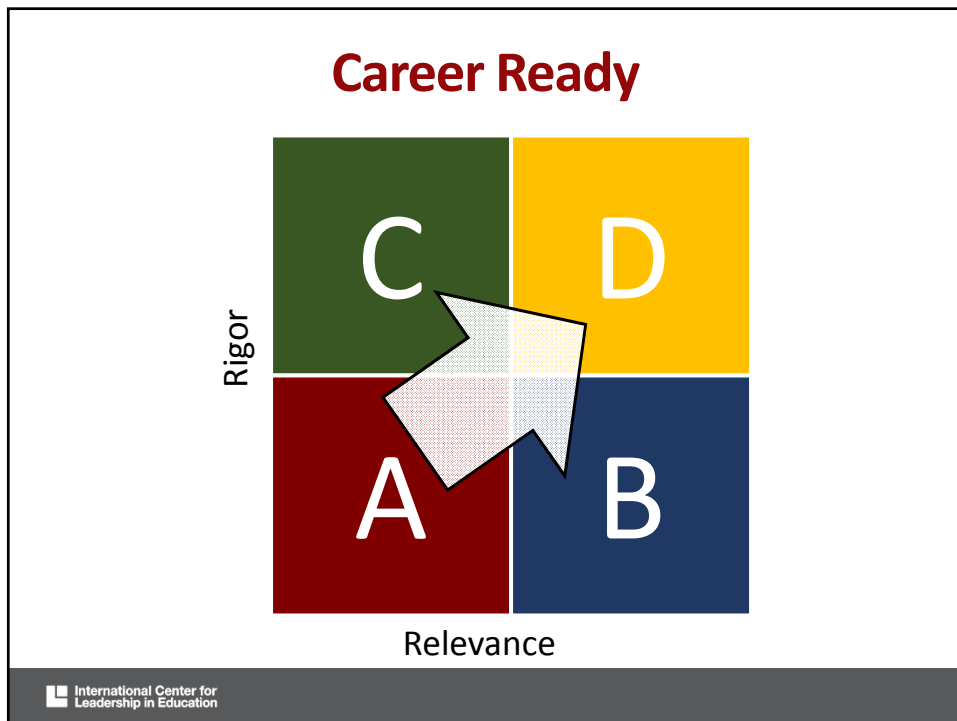
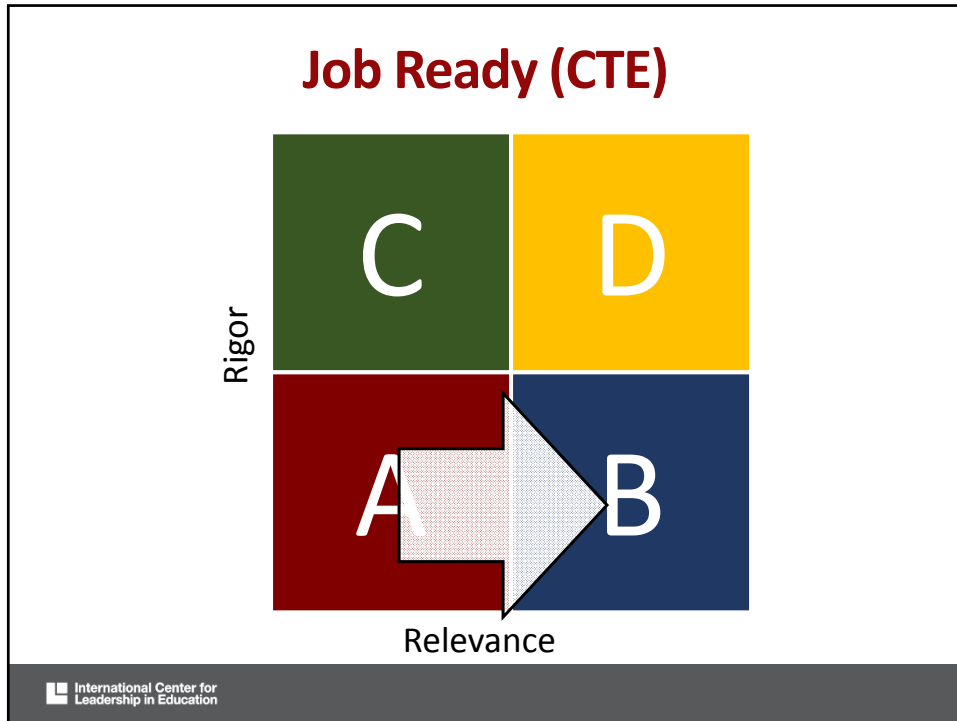
Rigor / Relevance Framework

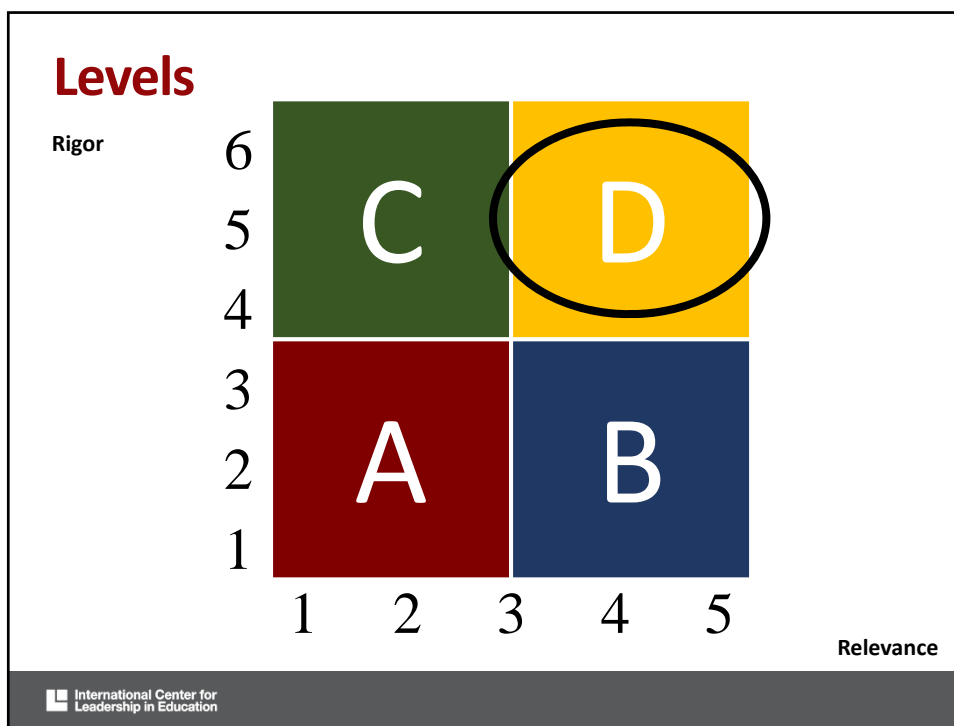


Rigor / Relevance Framework





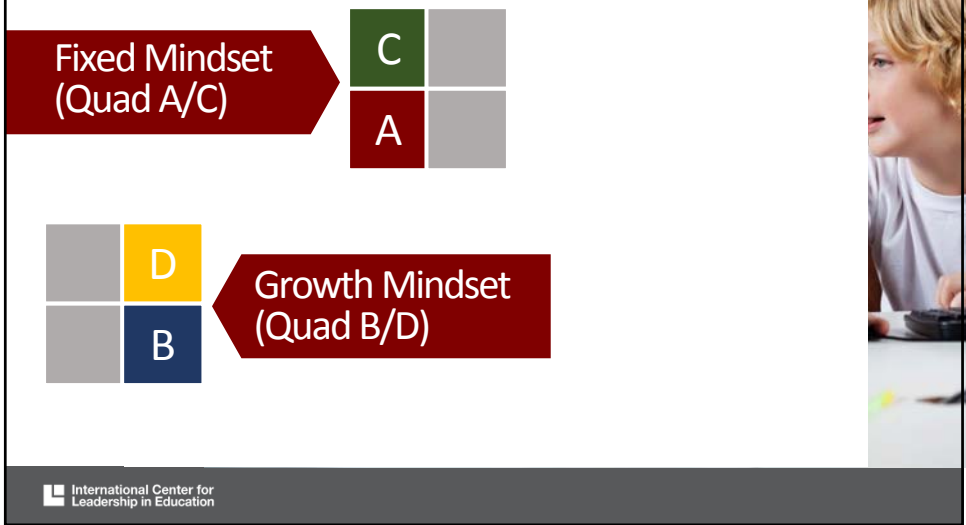




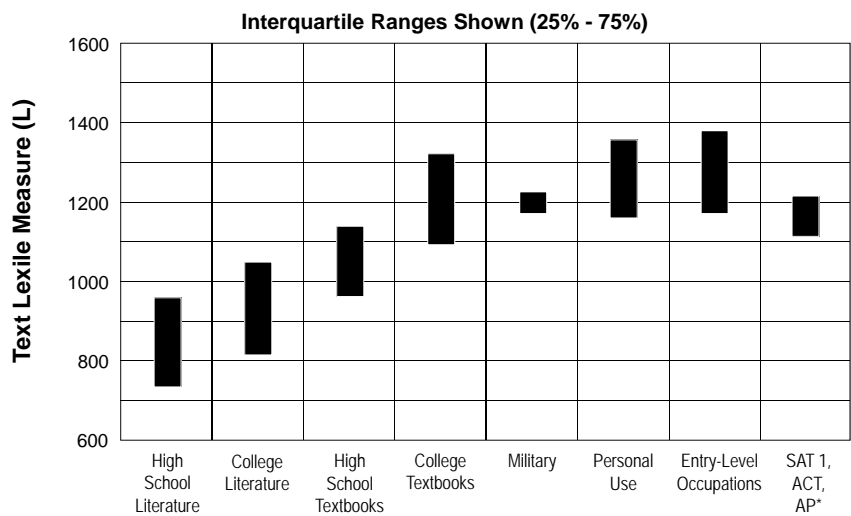
Two Approaches to School Improvement

International Center for Leadership in Education

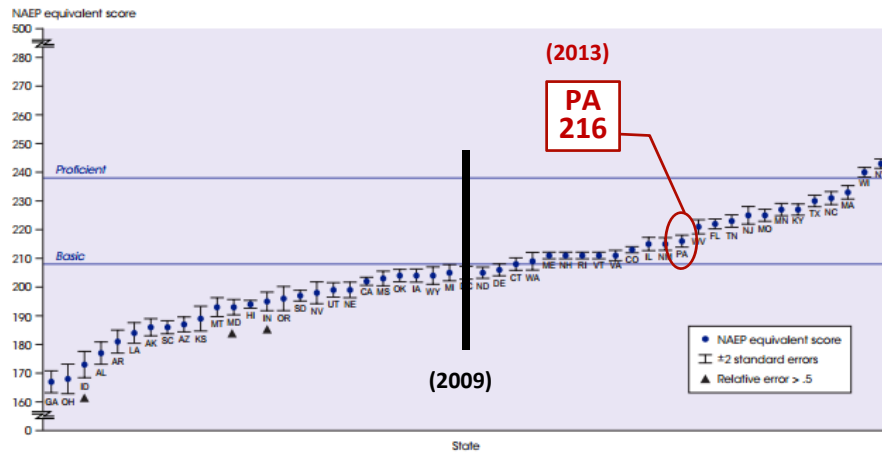
Two Approaches to School Improvement



Reading Study Summary



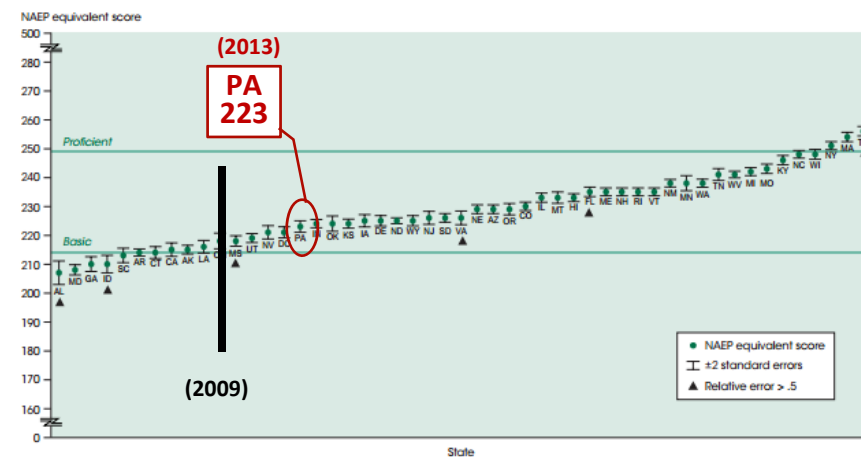
Grade 4 Reading Pennsylvania



SOURCE: U.S. Department of Education, Institute of Education Sciences, National Center for Education Statistics, National Assessment of Educational Progress (NAEP), 2013 Reading Assessment.

International Center for Leadership in Education

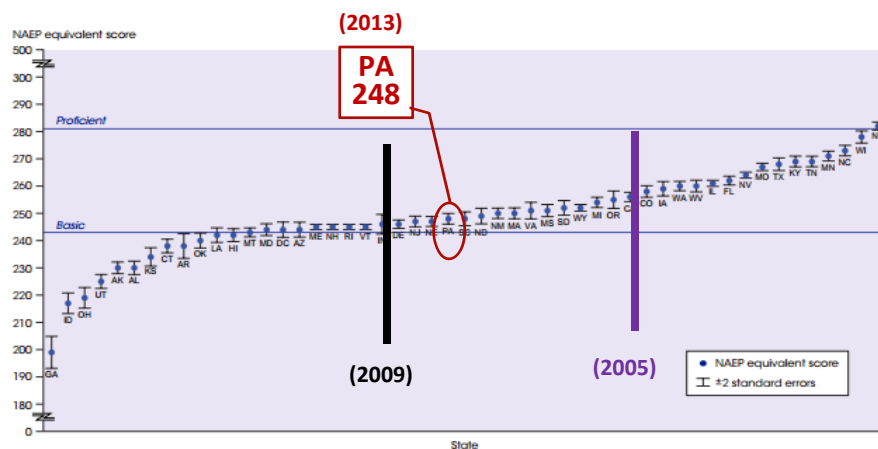
Grade 4 Math Pennsylvania



SOURCE: U.S. Department of Education, Institute of Education Sciences, National Center for Education Statistics, National Assessment of Educational Progress (NAEP), 2013 Mathematics Assessment.

International Center for Leadership in Education

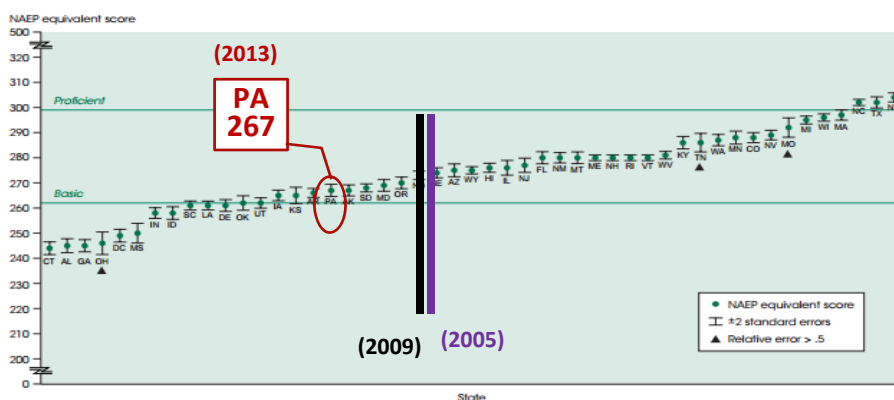
Grade 8 Reading Pennsylvania



SOURCE: U.S. Department of Education, Institute of Education Sciences, National Center for Education Statistics, National Assessment of Educational Progress (NAEP), 2013 Reading Assessment.

International Center for Leadership in Education

Grade 8 Math Pennsylvania



NOTE: California and Virginia were not included because the states do not assess general mathematics in grade 8.

SOURCE: U.S. Department of Education, Institute of Education Sciences, National Center for Education Statistics, National Assessment of Educational Progress (NAEP), 2013 Mathematics Assessment.

International Center for Leadership in Education

Digital Literacy

Tools/Applications/Systems

Digital Literacy

Tools/Applications/Systems

Digital Footprint/Tattoo

Digital Footprint



Facebook



Snapchat



Instagram



Vine

Digital Tattoo

Digital Footprint




College
Admission

Digital Footprint



College
Admission



Applying
for a Job

Digital Footprint

College Admission

Applying for a Job

Boyfriend/
Girlfriend
(their parents)

Digital Literacy

Tools/Applications/Systems

Digital Footprint/Tattoo

Vetting of Sources

Digital Literacy

Tools/Applications/
Systems

Vetting of
Sources

Digital
Footprint/Tatoo



WHY

WHAT

HOW

Fundamental Shift

Those Schools that pull students out of Art, Music, Physical Education, and CTE for remediation have a fixed (A/C) mindset

Fundamental Shift

Schools that drive academics into Art, Music, Physical Education, and CTE – as well as – drive Art, Music, Physical Education and CTE into academics have a growth (B/D) mindset

Practices

- Looping
- Department Chairs
- Professional Learning Communities
- Reading
- Writing Intensive
- Career Pathways
- 1/3
- Digital Delivery

Technology has transformed
how children play and interact.
It has transformed the
workplace they will enter,
but it has not transformed
how we educate them.

Gamification

Gaming is increasingly
being built based upon
brain research

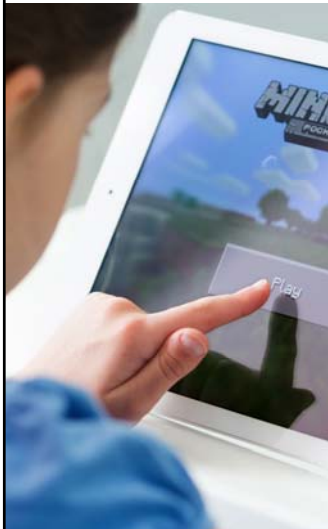
Gamification



Engaging

International Center for Leadership in Education

Gamification



Engaging

Personalized

International Center for Leadership in Education

Gamification



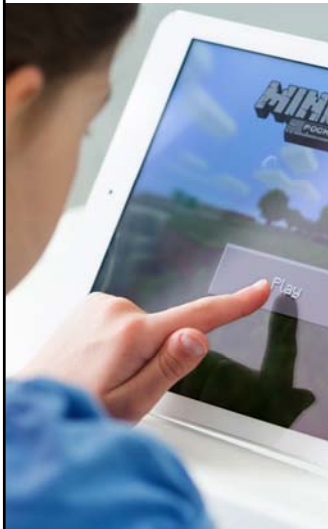
Engaging

Personalized

Built on Growth Model

International Center for Leadership in Education

Gamification



Engaging

Personalized

Built on Growth Model

Tied to Standards

International Center for Leadership in Education

Gamification



- Engaging
- Personalized
- Built on Growth Model
- Tied to Standards
- Merging with Online Providers

International Center for Leadership in Education

Districts Need a Gamification, Online, and Digital Literacy Policy and Plan

International Center for Leadership in Education

Stride Academy

 International Center for
Leadership in Education

Stride Academy/USNH

 International Center for
Leadership in Education

Practices

- Constant Search for Innovative Best Practices
- Redefined Community

Networked Communities

Social media is creating a new sense of 'community' tied together by common interests and not physical proximity to each other

**If we teach today's students
as we taught yesterday's,
we rob them of tomorrow.**

John Dewey

**On a scale of 1 to 5, rate
each of the following:**

The educators in my district are predominantly at:

(Fixed Mindset) 1 2 3 4 5 (Growth Mindset)

The parents in our district are predominantly at:

(Fixed Mindset) 1 2 3 4 5 (Growth Mindset)

The general community in our district are predominantly at:

(Fixed Mindset) 1 2 3 4 5 (Growth Mindset)

To prepare students for success in the world beyond school, we collectively need to have a:

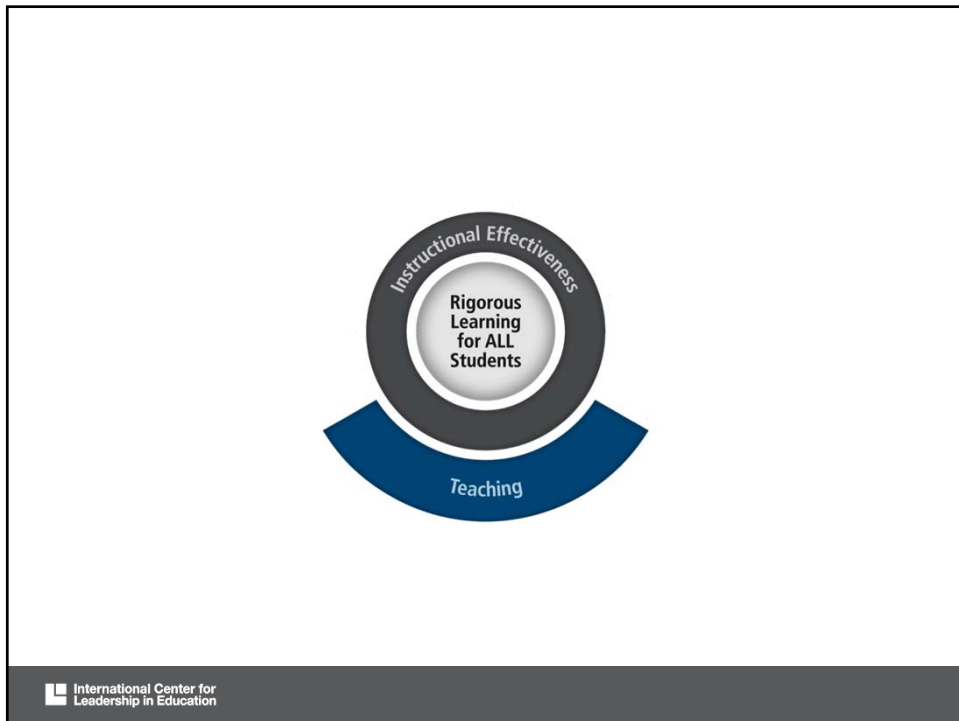
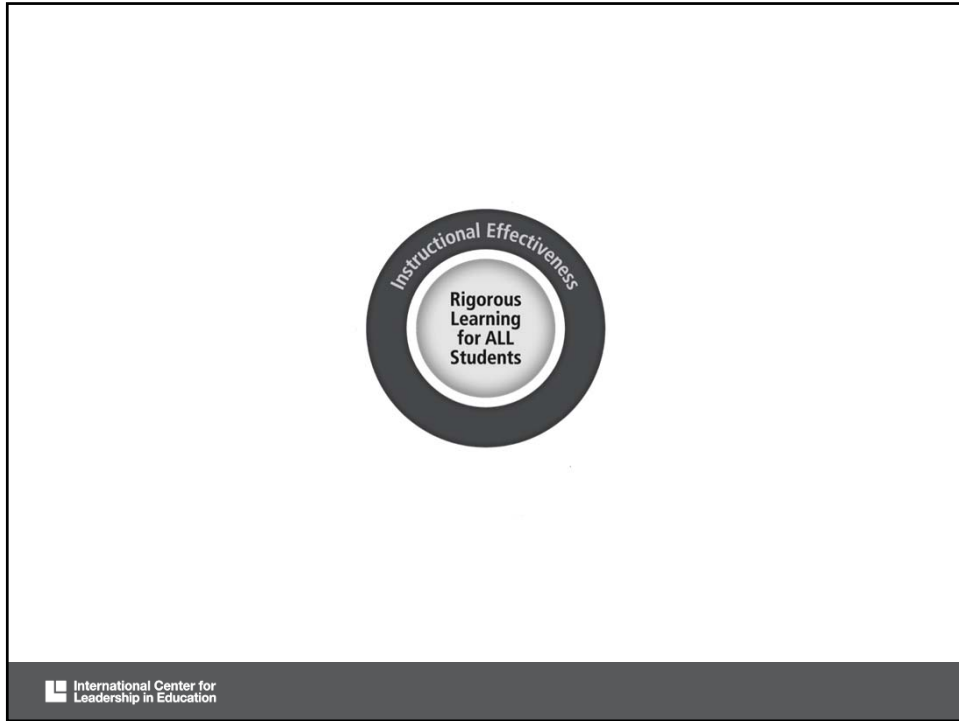
(Fixed Mindset) 1 2 3 4 5 (Growth Mindset)

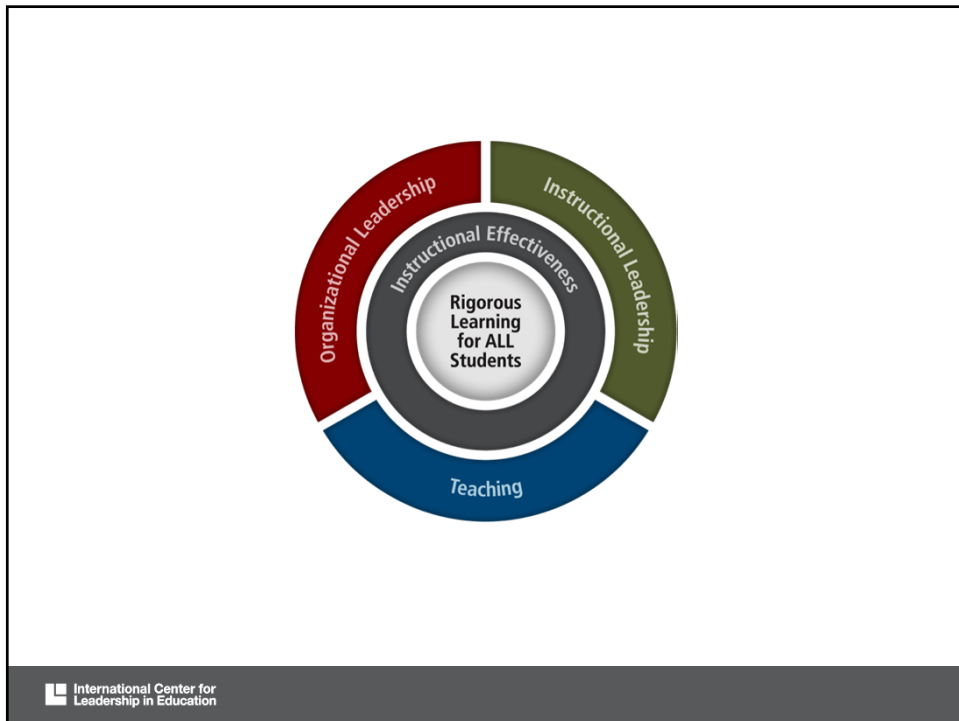
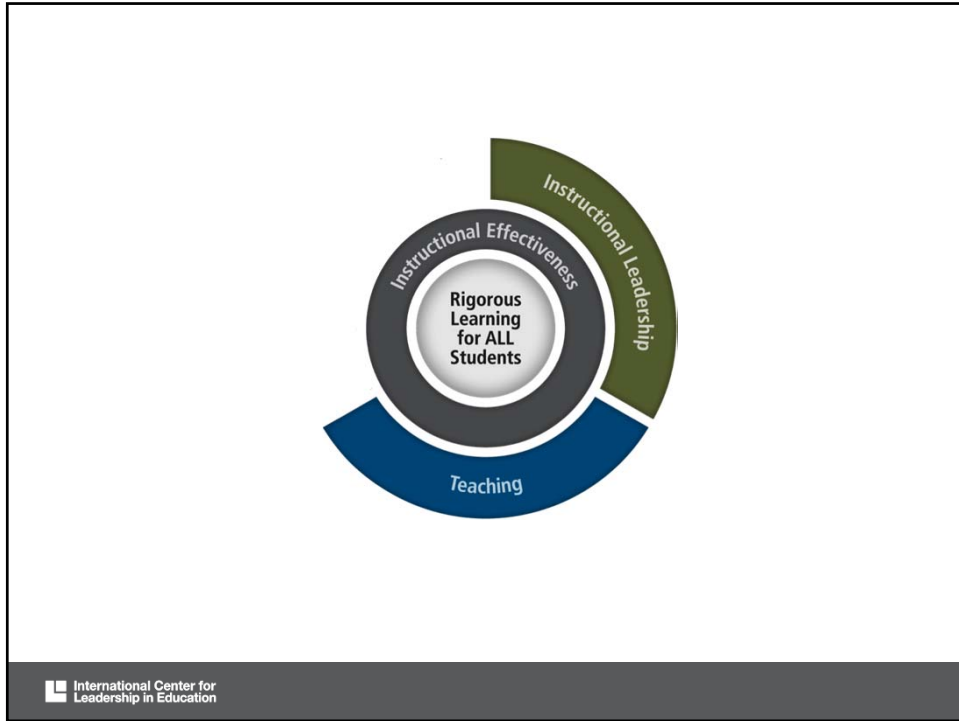
Systemwide Focus

 International Center for
Leadership in Education



 International Center for
Leadership in Education





Recommendations

Recommended Action Items



Create 20-Day Plans

Recommended Action Items






Create 20-Day Plans



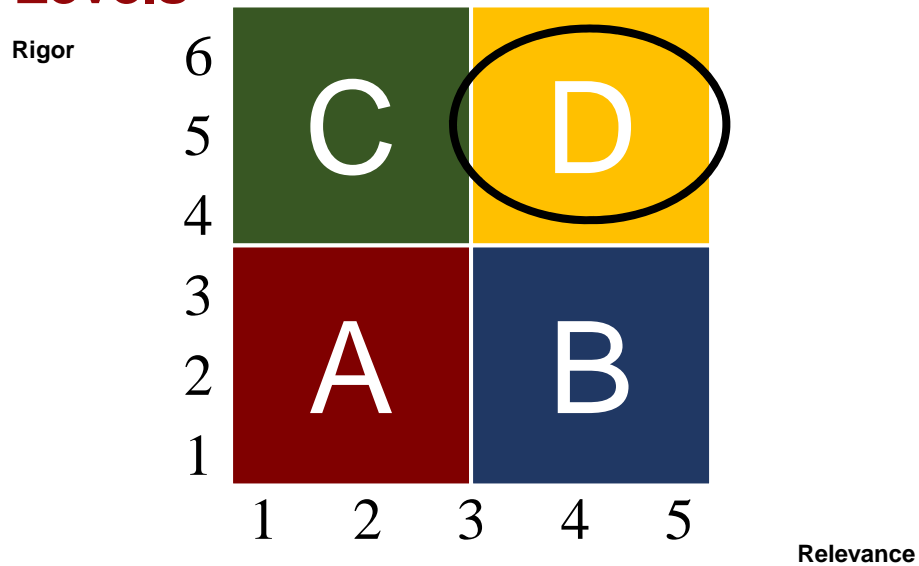
Create a Culture – Establish a Vision

Identify specific actions that should be taken to create a culture that will lead our schools to better prepare students for their future.

Recommended Action Items





-  Create 20-Day Plans
-  Create a Culture – Establish a Vision
-  Quad D Instruction

Levels



Do we need to do an instructional practices assessment in our schools? If yes, what would be most important to include in the assessment?

Recommended Action Items

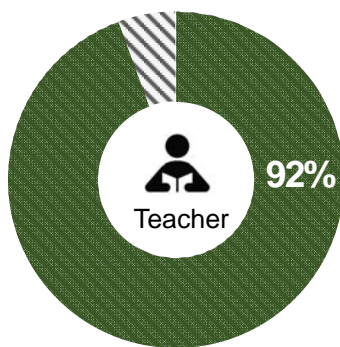
-  Create 20-Day Plans
-  Create a Culture – Establish a Vision
-  Quad D Instruction
-  Measuring What Matters

Survey Tools for Measuring What Matters

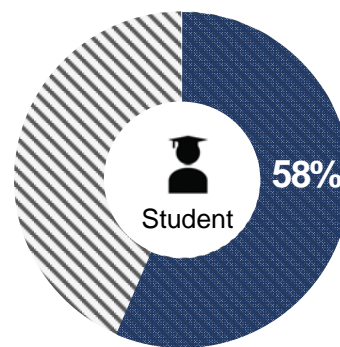


International Center for Leadership in Education

Teacher vs. Student Comparison



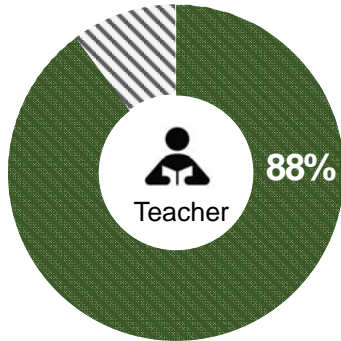
Students can apply what I am teaching to their everyday lives.



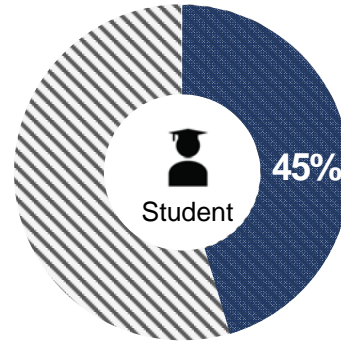
I can apply what I learn to my everyday life.

International Center for Leadership in Education

Teacher vs. Student Comparison

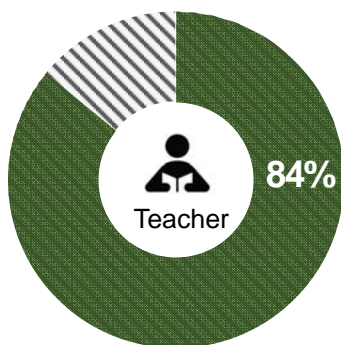


Students in my classroom engage in hands-on activities.

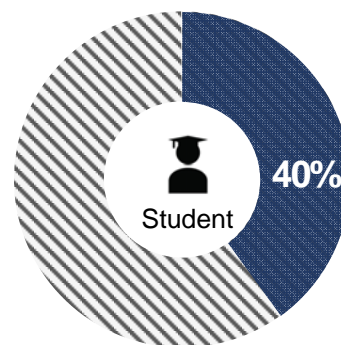


We do lots of hands-on activities in my classes.

Teacher vs. Student Comparison

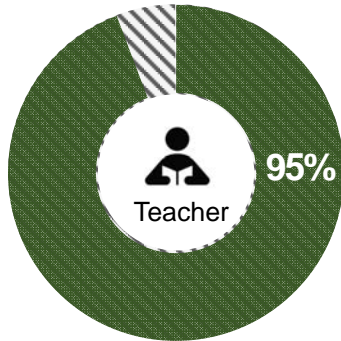


I make learning exciting for my students.

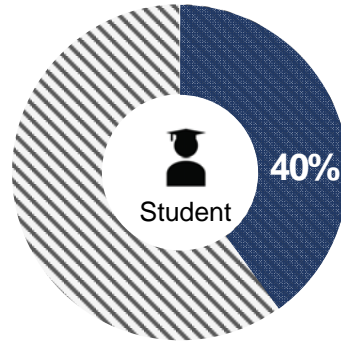


My teachers make learning exciting.

Teacher vs. Student Comparison

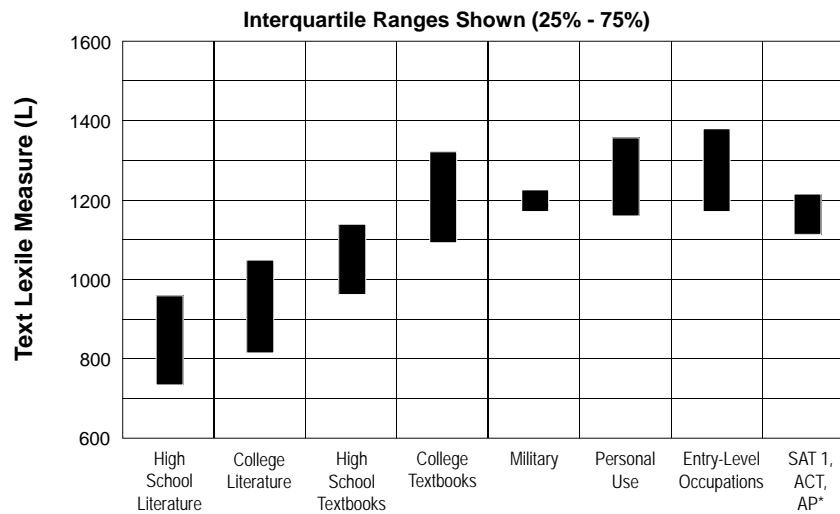


I recognize students when they demonstrate positive behavior in school.



Good citizenship is rewarded in this school.

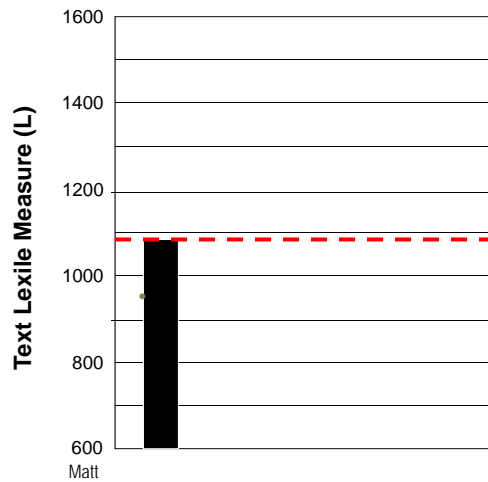
Reading Study Summary



Student Profile

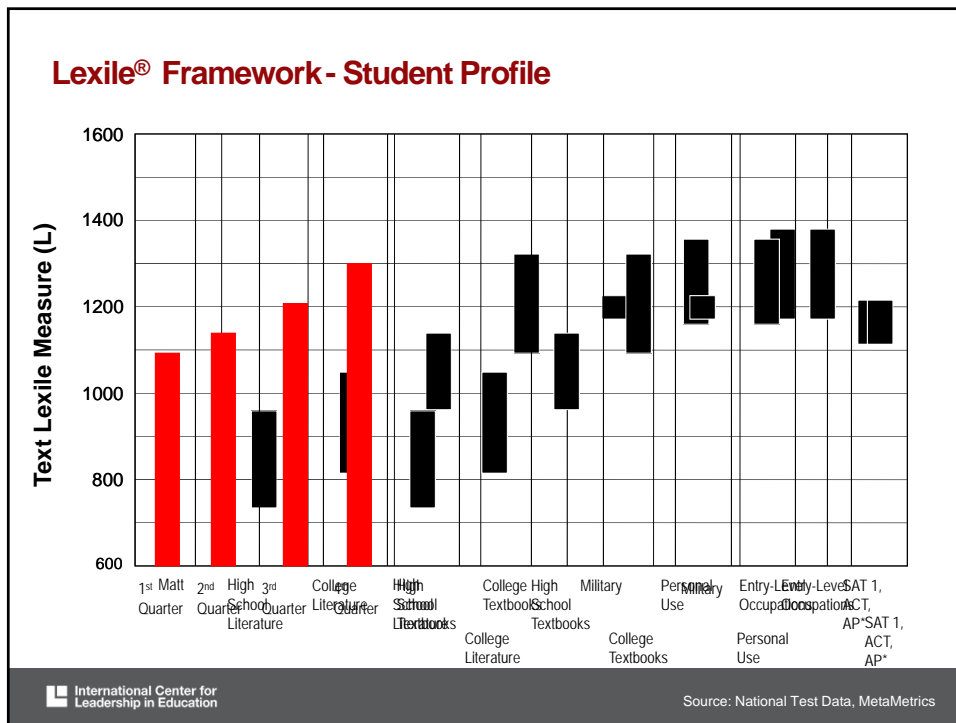
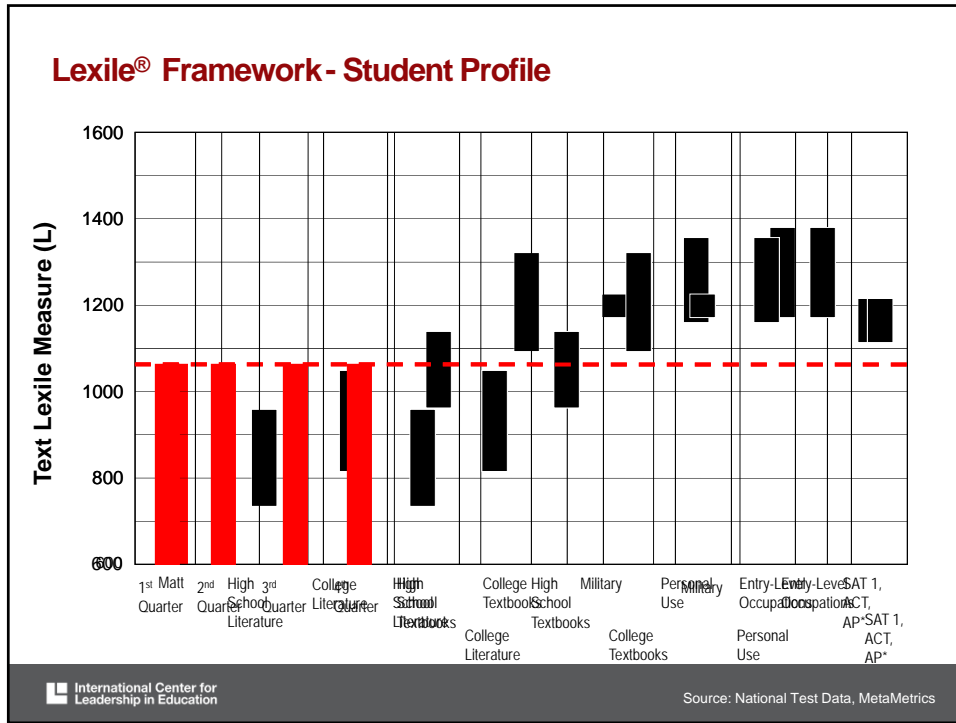
International Center for Leadership in Education

Lexile® Framework- Student Profile Matt - Age 15, Grade 10, Lexile 1090, GPA 3.0



International Center for Leadership in Education

Source: National Test Data, MetaMetrics



Are we measuring and reporting what matters most? If not what else should we measure and report?

Recommended Action Items



Professional Learning

What professional development needs exist in our district?

Recommended Action Items



Professional Learning



Leadership Development/Executive Coaching

Should we bring in executive coaches from the nation's most rapidly improving schools to help coach us on successful practices they have found most beneficial?

Recommended Action Items



Professional Learning



Leadership Development/Executive Coaching



2016 Model Schools Conference

JOIN US NEXT YEAR IN ORLANDO

24TH ANNUAL
**MODEL SCHOOLS
CONFERENCE**
JUNE 26-29, 2016 • ORLANDO

The only conference that
highlights the nation's **most**
rapidly improving schools

**EARLY REGISTRATION
SAVINGS!**
REGISTER TODAY!
www.modelschoolsconference.com



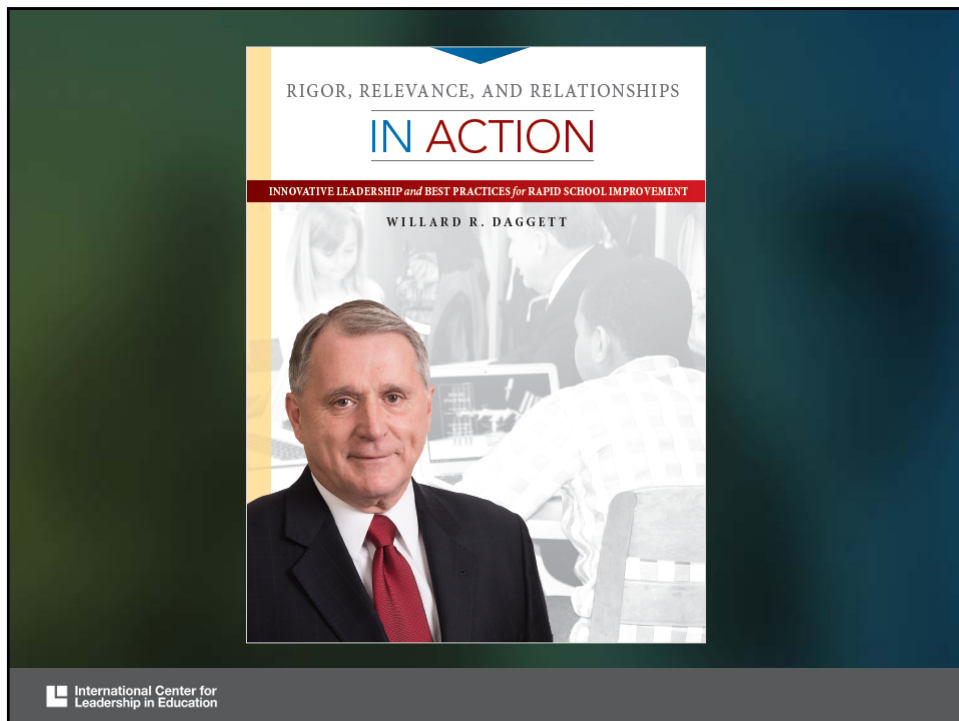
 International Center for
Leadership in Education


RIGOR, RELEVANCE, AND RELATIONSHIPS

IN ACTION

INNOVATIVE LEADERSHIP *and* BEST PRACTICES *for* RAPID SCHOOL IMPROVEMENT

WILLARD R. DAGGETT



 International Center for
Leadership in Education

Powerpoint, Notes, and More Information

VISIT:

<http://leadered.com/billdaggett>

OR SCAN:

