

RMFT 2.5 What's New July 2011

RepliWeb-MFT is a comprehensive managed file transfer solution that allows organizations to govern all aspects of A2A, Host, and Ad-Hoc file transfer processes. RMFT enables security policy enforcement, guaranteed and accelerated transfers, process automation, and audit across each stage of the file transfer process.

RMFT 2.5 introduces major new features, especially in the areas of security and management - several of which are the result of customer requests - as well as improvements to existing features. The new FTP feature eases management by enabling FTP sites and folders to be created and managed directly from the RMFT Management Console, thereby providing a single point of control for all corporate file transfers. FTP Audit provides a detailed and filterable record of all FTP folder events. The new File Encryption feature makes RMFT even more secure by enabling PGP encryption of package files residing on RMFT Server. Custom Active Directory Queries allow query-based synchronization of Active Directory users. Admin Notes allows administrators to add notes to *any* RMFT entity such as recording what modifications were made on a specific date.

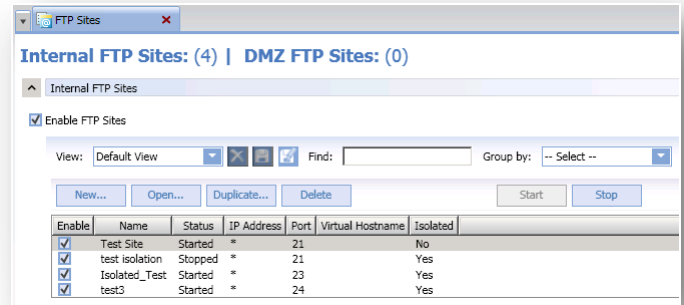
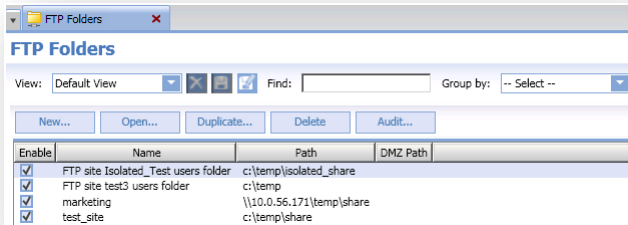
Performance enhancements mean that RMFT is now even more responsive during heavy load. For more information about a particular feature, please refer to the *RMFT Administrator's Guide*.

Key features include:

- **FTP Management** – Enables authorized RMFT entities to upload/download files to the RMFT Server machine using FTP protocol. According to their permissions, users may also be able to delete files/folders and create new folders using any FTP Client.
- **FTP Audit** – Provides a record of all FTP folder events including uploads, downloads and folder creation.
- **File Encryption** – Provides an additional layer of security by enabling PGP encryption of package files residing on RMFT Server.
- **Custom Active Directory Queries** – Custom queries can be used to synchronize users based on specific criteria such as only synchronizing users with an email address.
- **Admin Notes** – Enables RMFT administrators to keep a record of modifications made to RMFT entities.
- **SharePoint File Metadata Push** – In addition to the actual file, it is now possible to push file metadata (i.e. column information) to SharePoint Sites.
- **Web Customization** – Easily changeable themes for improved corporate branding.

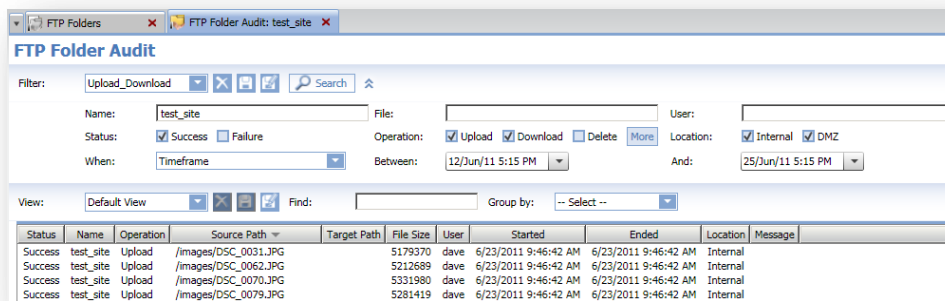
FTP Management

Sites and Folders – This version includes the ability to create and manage FTP sites and folders via RMFT Manager. Authorized users will be able to perform supported operations (upload, download, delete, rename and new folder creation) using any FTP Client, according to their folder access permissions. The optional user isolation feature prevents users from viewing or overwriting other users' content by restricting users to their own home directory.




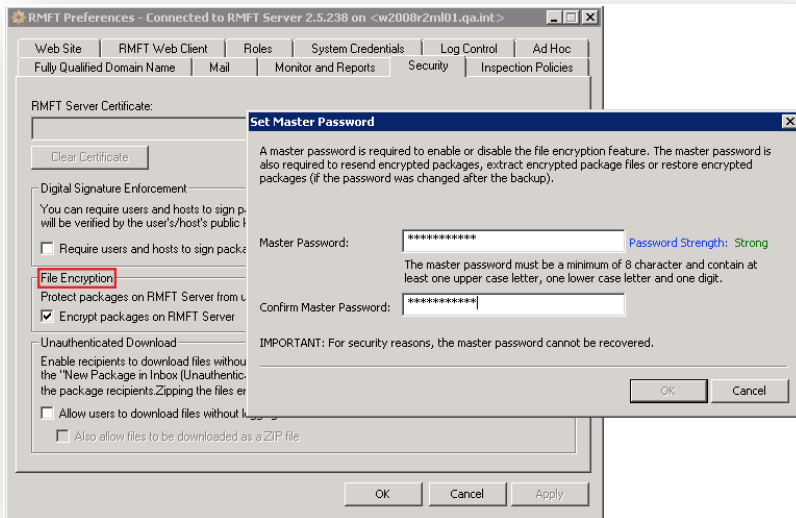
Note: This feature requires IIS 7.5 with FTP 7.5 to be installed on the internal and/or DMZ RMFT Server machines.








Audit – The FTP Folder Audit provides a detailed record of FTP folder activity such as uploads, downloads and file deletion. The list of events can be filtered using various criteria including timeframe, user, file name, operation type and more. Audit information can either be accessed from the User context menu (to see operations performed by a specific user) or from the FTP Folder context menu (to see all operations for a specific folder).



File Encryption

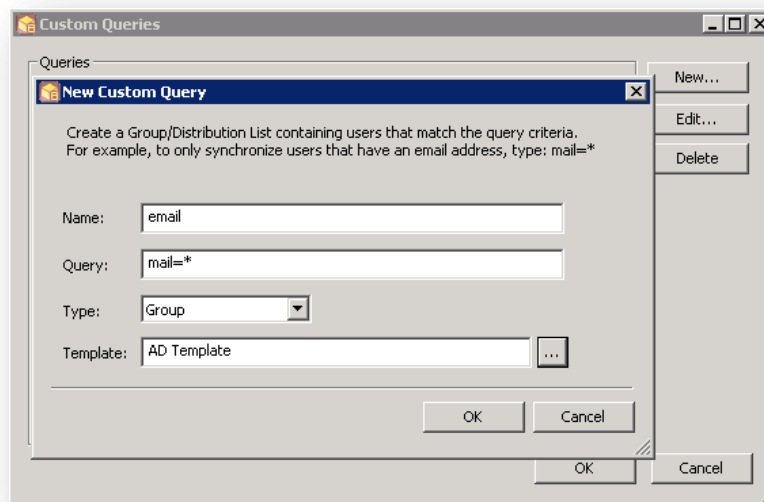
The option to encrypt package files on the RMFT Server machine has been added. The File Encryption feature is protected by a master password, which must be entered when turning the feature on or off or when performing administrative actions on encrypted files. Encrypted packages are indicated by a  icon in the Package Monitor.



Status	Resent	Encrypted by Server	From
			dave
			dave
			dave

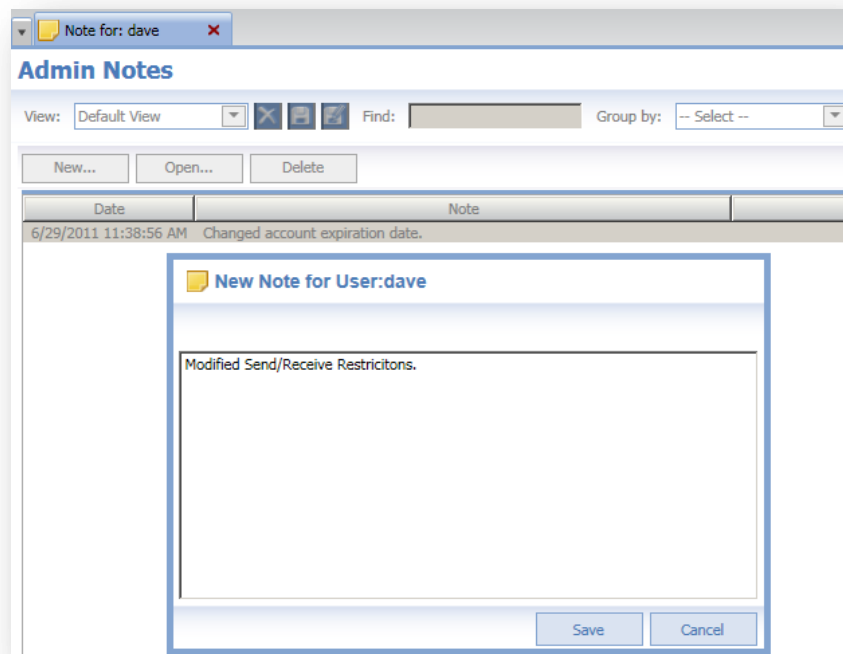
Custom Active Directory Queries

Custom queries can be used to synchronize Active Directory users according to specific criteria such as only synchronizing users with an email address. Custom queries offer a good way of preventing non-user accounts from being synchronized and can be used independent of or in addition to group synchronization.



Admin Notes

Admin Notes provide administrators with a quick and convenient way of recording changes made to RMFT entities (Users, Hosts, Inspection Policies, etc.). Notes can be easily added and managed by simply right-clicking an entity and selecting **Add note** or **Manage notes** from the context menu.

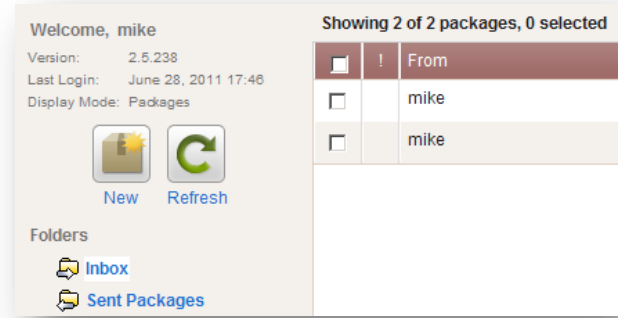
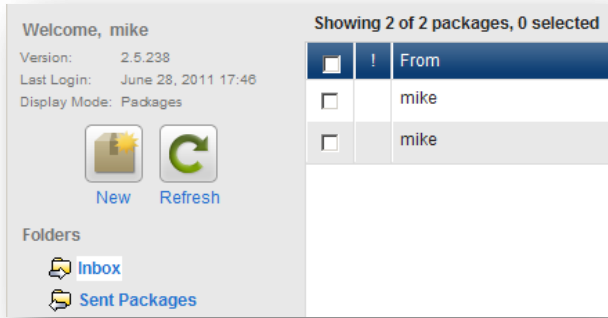


SharePoint File Metadata Push

In addition to the actual file, it is now possible to push file metadata (i.e. information related to the file) to SharePoint Sites, thereby preserving the context of the source files. The metadata is extracted from a specially formatted XML file that contains the names of existing columns (on the SharePoint site) and the information that each column should display. The metadata file can either be prepared manually before the transfer or prepared on-the-fly using a pre-packaging process.

RMFT Web Client Themes

A choice of seven different themes allows organizations to customize RMFT Web Client to match their corporate colors or simply according to personal preference.



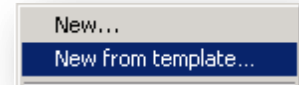
Web Services

RMFT Web Services has been extended to include the following functionality:

- FTP site and folder creation
- FTP audit
- Package forwarding
- Zipping package files before sending to recipients
- Ability to create an authenticated download link

Other Features

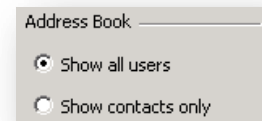
New User from Template – New user accounts can be created from predefined templates. This offers a convenient way of quickly creating multiple user accounts with the same settings.



Customizable Columns – The ability to hide or show columns in the Monitoring Views (Packages, Scheduled Jobs, Active/Completed Jobs, etc.) and Entity Lists (Hosts, Users, etc.) has been added, thereby enabling Administrators to choose which columns to display according to importance.

Active/Completed Jobs			
Job Name	RT Group	Parent ID	
Expiration/Notification Manager	RTGR_20110605014408...		1
Expiration/Notification Manager	RTGR_20110605014408...		1
Expiration/Notification Manager	RTGR_20110605014408...		1

Restricted Address Book – An option has been added to the user account settings that allows administrators to determine whether all users should be visible in the user's address book or only users to whom the user sends packages.



Exposed User Details – Personal details of exposed internal users can now be exposed to external users. This will allow external users to more easily locate internal users in their address book (by specifying the exposed details as search criteria).

Expose	Field
<input checked="" type="checkbox"/>	First Name
<input checked="" type="checkbox"/>	Last Name
<input type="checkbox"/>	Job Title
<input type="checkbox"/>	Department
<input type="checkbox"/>	Company

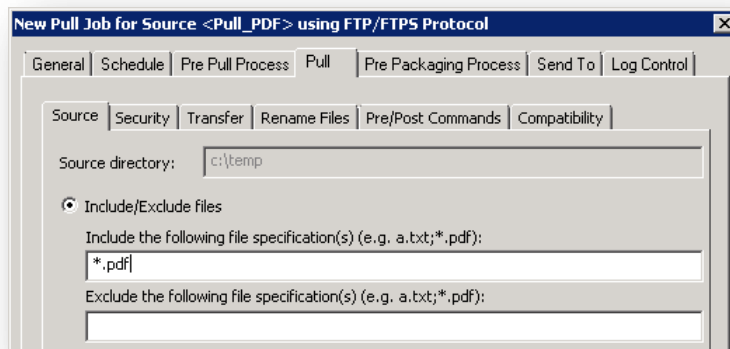
Medium Load Reporting – Medium load reporting joins the existing heavy load reporting feature. RMFT Server maintains responsiveness by automatically activating load control when the number of active Jobs reaches a predefined threshold. RMFT will report to Windows Event Viewer if Medium Load control is active for longer than a predefined time period. After the initial report, it will continue reporting at regular predefined intervals until Medium Load control is deactivated (which will also be reported). The default reporting intervals can be changed by editing the [Load Control] section in ~\RepliWeb\RMFT\scheduler\config\server.conf

Package Resend – The package resend feature has been expanded to include the following functionality:

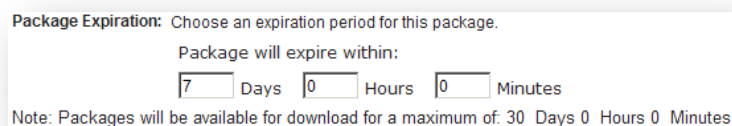
- **Resent Indication** - A resend icon indicating which packages have been resent
- **Multiple Resend** - The ability to resend several packages simultaneously.

Packages					
Status	Resent	Encrypted by Server	From	To	Subject
			dave	jane;	[Resent by the RMFT Administrator]Large Files
			dave	jane;	[Resent by the RMFT Administrator]Large Files
			dave	jane;	[Resent by the RMFT Administrator]Large Files
			dave	jane;	[Resent by the RMFT Administrator]Large Files
			dave	jane;	[Resent by the RMFT Administrator]Large Files
			dave	jane;	[Resent by the RMFT Administrator]Large Files

Exclude/Include Files – Administrators can now specify which files to include/exclude from the transfer. This feature has been added to the following protocols: **FTP/FTPS, SMB, and SFTP.**



Maximum Package Expiration –The maximum package expiration period (defined on RMFT Server) has been added as read-only information to RMFT Web Client's 'Package Expiration' option. Users who want to change the expiration period when sending a package will now be aware that they cannot exceed the maximum expiration period.



Package Processing Statistics – The status bar now shows the number of packages displayed in the Package Monitor as well as their completion status. The number of expired packages will also be shown if the **Show Expired** option is enabled.

Packages: 5 Completed: 5 (Success: 5, Warning: 0, Error: 0, Aborted: 0) Expired: 1 RMFT Health: 