



**RODALE**  
INSTITUTE™



Mary and Roy





# Rodale Institute Wedding Package

## Wedding Package Includes:

- ✿ 6-hour venue rental
- ✿ Access to our vast 333-acre farm, located minutes from Kutztown, PA
- ✿ Multiple ceremony sites like the apple orchard, garden pavilion and tree grove
- ✿ Access to our Theater, next to the Garden Store, for use as a bridal suite
- ✿ Access to groom suite in the sunroom
- ✿ Exclusive access to our rustic stone bank barn for your reception
- ✿ 3 days for setup, wedding and clean-up: Friday, Saturday and Sunday
- ✿ On-site parking
- ✿ On-site security personnel
- ✿ Exclusive use of the property for the entire weekend
- ✿ Your choice of vendors

## Furnishings Provided:

- ✿ 8' rectangular tables: 34
- ✿ 15 8' solid wood farm tables
- ✿ Mahogany chiavari chairs

## Wedding Package Fee:

- ✿ \$6,200
- ✿ Weddings run May through October

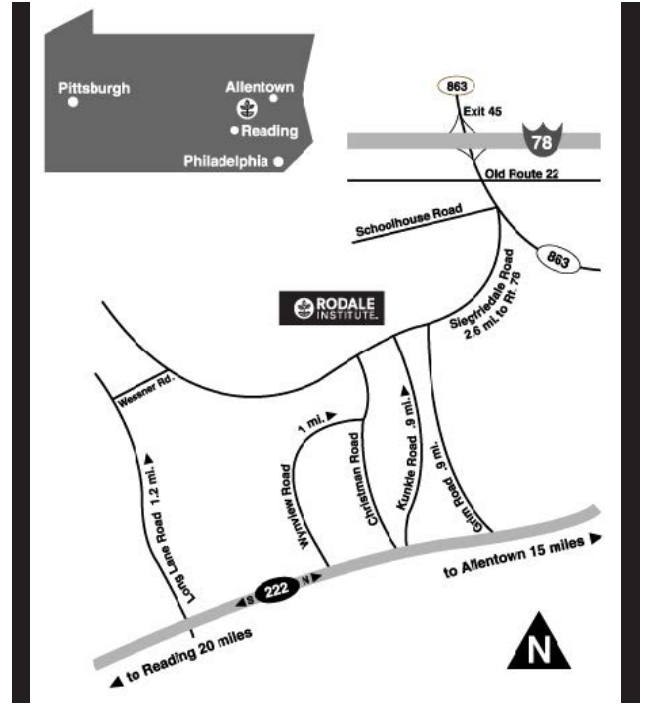


# Take A Tour!

## Tour Availability:

Eager to see more? Visit us at Rodale Institute to fall in love with your dream wedding venue! We'd love to take you on a tour of our one-of-a-kind property. Based in Kutztown, PA, we're conveniently located within easy driving distance of the Lehigh Valley, Philadelphia, New York City, New Jersey, Baltimore, Washington, D.C. and more! Please contact us to schedule a date and time for your tour.

*An aerial view of our sprawling 333-acre farm.*

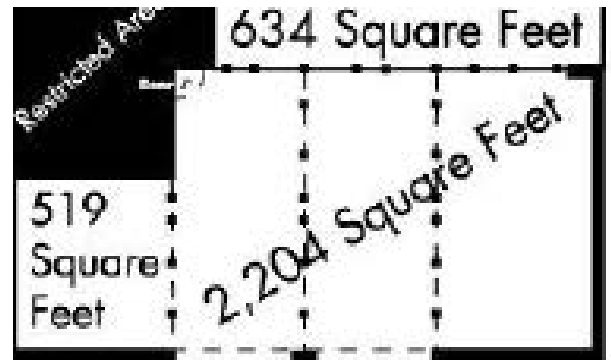
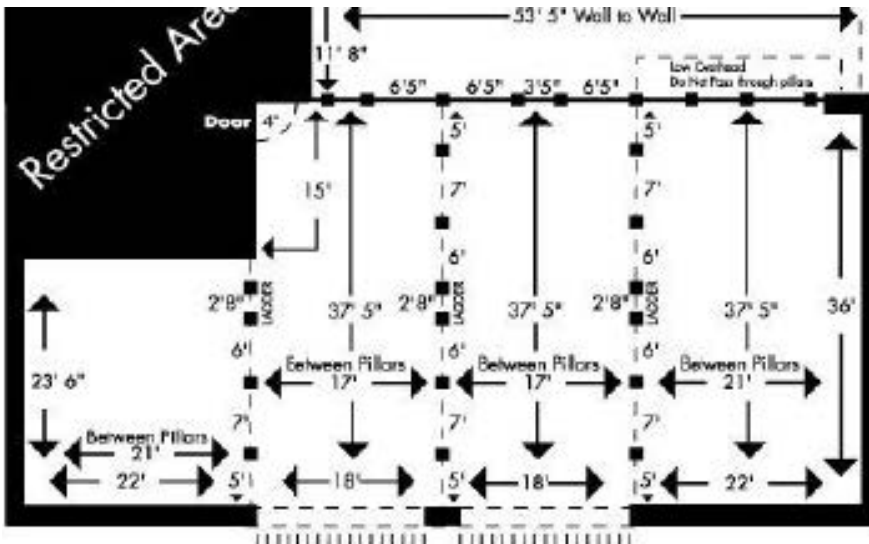


## Barn Layout

### Rodale Barn Second Level

1/152.5 Scale in Millimeters

2 millimeters to 1 foot  
Scale in Millimeters



# The Word On Rodale

When you've been around as long as Rodale Institute, you're bound to get some feedback.

Here are some of our favorite testimonials from our satisfied visitors and couples.

“Very beautiful property. The barn for our reception was simply charming!”



Janine Collette Photography



Lauren Fair Photography

“At Rodale Institute, organic idyllic views of pastoral rolling hills are embellished by apple orchards and lush gardens around every corner.

The weeping willow tree cradles the springfed pond for a perfect outdoor ceremony, and the rustic, 19th-century barn is stunning for a reception.”

“When we found Rodale Institute...we knew right away that this was the perfect place to host our guests.”



Lauren Fair Photography



# All the Information You Need

## Timeline For Set Up and Tear Down:

**FRIDAY:** The wedding party is encouraged to set up between the hours of 9am and 6pm. During this time, rental item delivery and wedding rehearsal may take place. **RODALE STAFF DOES NOT SET UP THE LAYOUT FOR YOUR WEDDING.** While we do place the amount of chairs, tables and/or benches you request in their respective ceremony/reception venue, it is your responsibility to set them up to your liking.

**SATURDAY:** Set up and use of prep spaces (for bridal party and groomsmen only) may begin no earlier than 10am; all personal belongings must be removed from said spaces by 6pm. Wedding and reception can last up to 6 hours, ending no later than 10pm. All food/waste must be removed from the barn immediately after the reception (responsibility of caterers/bartenders).

**SUNDAY:** Wedding clean up may take place between 10am and 1pm. You are responsible for removing all personal belongings from the barn (decorations, food, furniture, etc.). Anything left behind will be disposed of.

**MONDAY:** Rental items must be removed between the hours of 8am and 4pm.

## Catering:

If you decide not to use one of our recommended caterers, we ask that your caterer of choice schedules an appointment to visit our property. Because of our unique venue, it is important that he/she understands what he/she will require for the day. Caterers must submit a \$250 cleaning deposit to Rodale Institute and are responsible for removal of all waste. Upon inspection and approval following the event, that deposit will be refunded.

## Payment:

We require a 50% deposit and signed agreement in order for your date to be considered reserved. The rest of the payment is due before the day of your wedding. You can pay by Visa/MasterCard, check or cash. Please, make all checks out to Rodale Institute.

## Prep Spaces:

Prep spaces are available for both the bridal party and groomsmen beginning at 10 AM the day of the wedding. The bridal party has access to the Theater, while the groomsmen may use the sunroom. All personal belongings must be removed by 6 PM.

## Smoking:

We offer a designated smoking area located on the gravel path at the bottom of the barn entrance. Signs will be posted indicating the smoking section. Smoking is prohibited elsewhere on the farm.

## Weather:

Rodale Institute is not liable for any inclement weather. Should the situation arise, the ceremony may be held in the barn.

## Security:

As per Rodale Institute policy, we have a security guard on site from 6-10pm.

## Lighting:

Our barn includes several “Christmas” style white string lights along the exposed beams and a symmetrical display of the larger “carnival” bulb style lights in between the exposed rafters. The white string lights will start about 7ft up the beams and the larger white bulbs will be hanging in between the “sections” of the barn. Due to insurance liability, we cannot permit you to climb ladders to remove/add lights inside the barn.

## Decorations:

The creation of any holes in the barn or any structure on the farm is strictly prohibited—no nails, staples, pins, screws, etc.



Lauren Fair Photography



Mary and Roy



Matt Robinson

## DJ/band location:

There are 3 locations for the DJ and one location for a band. One of the DJ areas is equipped with 3 separate 20 amp circuits to accommodate the needs of live bands. (See barn layout for more information).

## Certified bartenders:

We require a copy of the bartender's valid certification.

## Rehearsal on the farm:

Dinner rehearsals on the farm are not included in the venue rental fee. The farm must be cleared on Friday evenings by 6pm. In order for you to use the farm in the evening, staff must also be present, which makes this a separate event that we must charge for.

As an alternative, we suggest you plan a daytime rehearsal. You may bring in some pizzas or sandwiches for lunch and have a picnic on the farm. This is a great opportunity for you to get help setting up for the wedding! We can provide self-guided walking tour maps for your guests to check out the farm; this way you can set up, rehearse, hang out with your family/friends during the day (when you can actually see our fantastic farm), and have everything finished by 6pm.

## Samantha Jay Photography





# Preferred Wedding Vendors

Rodale Institute is a destination for inspiration—a nonprofit dedicated to pioneering organic agriculture through research and outreach. We are a unique venue located on a 333-acre organic farm. Our preferred vendors love our farm and we have teamed up to provide the best experience for our wedding couples.



## Catering

### **Seedling & Sage**

215-885-2037

mmcdevitt@seedlingandsage.com

seedlingandsage.com

### **Devine Dining**

484-441-3663

Devinedining610@icould.com

Devinecaterer.com

### **KCK Catering and Events**

908-914-1769

cassandra@kckcatering.com

www.kckcatering.com

### **Simply Smooth Catering**

610-434-3900

laurin@simplysmooth.com

www.simplysmooth.com

## Design

### **Allium Design**

978-884-7712

sarahpetryk@gmail.com

www.alliumfloraldesign.com

### **CK Designs and Special Events**

610-657-1096

Ckdesigns64@yahoo.com

### **Mark Kintzel Design**

610-554-7639

makintzel@gmail.com

www.markkintzel.com

### **Rodale Institute**

hand-picked flowers from the farm

weddings@rodaleinstitute.org

## Equipment/Furniture

### **Action Party Rentals**

610-435-8900

www.actionpartyrentals.com

### **Fox & Finch Vintage Rentals**

610-554-1207

thefoxandthefinch@gmail.com

www.thefoxandthefinch.com

### **Knights Rental**

610-376-8429

customerservice@knightsrental.com

www.knightsrental.com

## Photography

### **Colin Coleman**

814-312-3553

info@colincolemanphoto.com

### **Janine Collette Photography**

908-463-0036

www.janinecollettephotography.com

### **Lauren Fair Photography**

610-389-1738

www.laurenfairphotography.com

### **Mary and Roy Photography**

us@maryandroy.com

www.maryandroy.com

### **Miana Jun Photo**

www.mianajun.com

info@mianajun.com

### **Andrea Krout Photography**

610-945-7059

hello@andreakrout.com

www.andreakrout.com

### **Nina Lily Photography**

267-374-7882

christina@ninalilyphotography.com

www.ninalilyphotography.com

## Entertainment

### **Evans Entertainment**

267-476-9982

info@evansdj.com

www.evansweddingproductions.com

### **Scratch Weddings**

1-866-955-8580

www.scratchweddings.com

### **Wesley Works**

610-928-2000

contact@wesleyworks.com

www.wesleyworks.com

### **CD Entertainment**

610-944-5565

cdedjpa@ptd.net

www.cdentertainmentdjs.net

## Hotels

### **Hilton Garden Inn**

610-398-6686

### **Holiday Inn**

610-391-1000 ext. 2445

### **Homewood Suites**

610-336-4860

### **Hampton Inn Kutztown**

484-641-8800



**RODALE**  
INSTITUTE™



## “Healthy Soil, Healthy Food, Healthy People”

Thank you for considering Rodale Institute for your wedding venue. As a 70-year-old non-profit, we know how important this moment is for you. As you plan your big day, here is a brief background on our family here at Rodale Institute and what we do.

Founded in 1947 by J.I. Rodale, Rodale Institute has paved the way for organic farming practices around the world. We have scientifically researched, documented and shared the benefits of organic farming for human and environmental health. We are committed to developing a system of organic agriculture that will improve every aspect of growing and eating food.

As a research farm, we conduct carefully monitored experiments to determine the best practices for organic agriculture. As an educational institution, we share our discoveries with people around the world. And, most importantly, as a certified organic farm, our in-house research team develops brand-new farming techniques that we use to grow organic crops.

610-683-1400

[RodaleInstitute.org](http://RodaleInstitute.org)

611 Siegfriedale Road, Kutztown, PA 19530

?

## Did You Know?

- The brick-and-mortar Garden Store on the Rodale Institute farm was built in 1906 and served local families as a one-room schoolhouse until 1945. Children attended school there from first through eighth grade, the level at which most students finished their formal education. Over the years, the schoolhouse building has housed migrant workers, served as a storage area, and showcased an educational exhibit. It has been the home of our store since the late 1980s.
- Rodale Institute is home to the longestrunning side-by-side comparison of organic versus conventional agriculture in the country! Established in 1981, our Farming Systems Trial collects data on yields, energy use, soil health, water use, profitability and much more. This data is used by farmers and scientists around the world!
- Rodale Institute’s Demonstration Garden was established in 1974 to display basic sustainable organic gardening methods. Our focus is to regenerate and maintain soil health and fertility without the use of harmful chemicals. Healthy soil is the foundation for human and environmental health, and when you see the beauty and bloom of the plants in our garden, it’s easy to understand the connection between healthy soil, healthy food, and healthy people.
- Our sister company, Rodale Inc., produces many national health and wellness magazines. As a result, our farm is often used for photoshoots for popular publications like Prevention, Organic Life Magazine, Men’s Health, Runner’s World and more!