

ROLLER CATALOG



Omni Metalcraft corp.

TABLE OF CONTENTS

GENERAL INFORMATION	PAGE	CONTENT	PAGE
Tube Sizes and Material	4	5-9/16"	43
Axle Retention and Material	4	6"	43
Construction	4	6-1/2"	44
Bearing Features and Lubrication	4	8"	44
Sprocket Information	4		
Groove Information	5	TAPERED ROLLERS	
Load Capacity Reference	5	1"	47-49
Taper Specific Information	5-6		
Customizing Rollers	6-7	STAINLESS STEEL AND PVC ROLLERS	
Stainless Steel Roller Information	8-9		
Bearing Selection Guide	10	1"	52
Coatings and Sleeves	11	1.9"	53-54
Gravity Roller Quote Sheet	12	1-1/2"	55
Sprocketed Roller Quote Sheet	13	2-1/2"	56
Grooved Roller Quote Sheet	14		
Tapered Roller Quote Sheet	15	SPROCKETED ROLLERS	
		1.9"	60
STRAIGHT ROLLERS		2"	62
1"	18	2-1/2"	63
1-1/4"	18	2-9/16"	64
1-3/8"	19-21	3-1/2"	65
1-5/8"	22	4"	67
1-3/4"	22	5"	68
1-7/8"	23		
1.9"	24-26	GROOVED ROLLERS	
1-1/2" pipe	27	1-3/8"	72
2"	28-29	1-7/8"	75
2-1/4"	30	1.9"	76
2-1/2"	31-33	2"	78
2-9/16"	34	2-1/2"	80
3"	35		
3-1/2"	36-37	FRAMESAVER ROLLERS	
4"	38-40	1-7/8" - 2"	84
4-1/4"	41		
5"	42	POLY RIB ROLLERS	
		1.9" - 2-1/2"	88

Omni Metalcraft Corp. offers thousands of tube, axle, and bearing combinations for gravity and powered applications. This Roller Catalog, which focuses on our expansive offering of standard, pre-engineered rollers, can be used for guidance when selecting standard rollers. For custom roller applications, please contact Omni Metalcraft's Roller Division. We appreciate your business and hope that you find this catalog useful.

For more information, contact one of our customer service representatives.

GENERAL INFORMATION

TUBE SIZES AND MATERIAL OPTIONS

- Tube diameters range from 1" to 8"
- Tube is specified by the Outer Diameter (OD) and tube wall thickness
- Pipe is specified by the Inner Diameter (ID) and a schedule number that represents wall thickness
- Roller tubes are available in the following materials:
 - Mild (low carbon) steel
 - Galvanized steel
 - Stainless steel
 - Aluminum
 - PVC (pipe)
 - Industrial steel pipe

AXLE RETENTION AND MATERIAL OPTIONS

- Axles up to 3/4" (dia or hex) are available with the spring or cotter pin retention
- Axles larger than 3/4" (dia or hex) are not available with the spring retention
- Round axles 3/4" dia and larger are available with D-end retention
- Axles, springs and cotter pins are available in carbon steel and stainless steel
- Other retention styles are available upon request

CONSTRUCTION

Crimped / Swaged – Tube material is formed down over the bearing to hold it in place. Bearings installed in this manner are non-replaceable.

Counter Bored / Press Fit – Tube is counter bored to the correct inside diameter for the bearing to be press fit. Bearings installed in this manner are replaceable.

BEARING FEATURES

(reference Bearing Selection Guide page 10)

Seals – Keep contaminants out while helping retain grease within the bearing. Seals are made of Teflon®, felt, rubber, nylon and Mylar® depending on the bearing type.

Shields – Keep contaminants out. Can be used in conjunction with a seal. Generally made of steel.

Labyrinth Seals – A series of interlocking passageways in the bearing housing to help prevent leakage.

Ball Retainer – Holds ball bearings evenly spaced. Makes for a quieter bearing and improves bearing life.

Set-Screws – Locks the inner race onto the axle.

Flanged – Flanges are located on the outer race of the bearing. Flanges create a fixed bearing extension from the end of the tube. Flanged bearings cannot be recessed into tubes.

Unflanged – Bearings that have a cylindrical body that can be pressed completely into a tube if needed.

BEARING LUBRICATION

O (Oiled) – Generally used in gravity applications requiring a low coefficient of friction. Temperature range of standard oil is 0° to 200° F.

GP (Grease Packed) – Generally used in powered applications. Temperature range of standard grease is -10° to 225° F. Also suitable for humid applications.

Regreaseable – Same features as GP bearings, but include a drilled inner race or an extended back closure to accept more grease through a fitting located on the end of the axle without being removed from the roller. The frame thickness of the conveyor is required to determine regrease hole location.

GENERAL SPROCKET INFORMATION

(reference quote sheet drawing page 13)

- Sprockets available on all roller sizes with 11 gauge or thicker tube wall
- Standard sprockets are A-plate for 40, 50, 60 and 80 series chain
- Other sizes and styles are available upon request
- Sprockets can be placed anywhere along the length of the tube provided they are clear of the bearing and will not cause chain interference

GENERAL GROOVE INFORMATION

(reference quote sheet drawing page 14)

- Grooves available on 1-3/8", 1-5/8", 1-7/8", 1.9", 2" and 2-1/2" OD rollers
- 5/16" narrow grooves are made for 3/16" dia belt. Narrow grooves can be placed as close as 5/8" from center of groove to center of groove.
- 1/2" wide grooves are made for 1/4" dia belt. Wide grooves can be placed as close as 1" from center of groove to center of groove.
- Grooves can be placed anywhere along the length of the tube provided they are clear of the bearing and are set at least to the minimum centers noted above.

CONVEYOR ROLLER SELECTION FOR A GIVEN LOAD

Consider only 2/3 of the rollers under the product when calculating required roller capacity because conveying surfaces are not typically perfectly flat.

Roller Diameter and Axle	Maximum Product Weight (lbs)
1" OD - 5/16 hex	300
1 3/8" OD - 5/16 hex	600
1.9" OD - 7/16 hex	1,500
2-1/2" OD - 11/16 hex	3,500
3-1/2" OD - 1-1/16 hex	6,000
3-1/2" OD - 1-7/16 dia	10,000
4" OD - 1-7/16 dia	15,000
5" OD - 1-11/16 dia	25,000

The above guidelines assume "0" shock load and are not applicable for 3 or more lanes. When calculating load capacity for rollers in fork lift loading areas, Omni Metalcraft Corp. recommends tripling the required roller capacity due to shock loading.

TAPER SPECIFIC INFORMATION

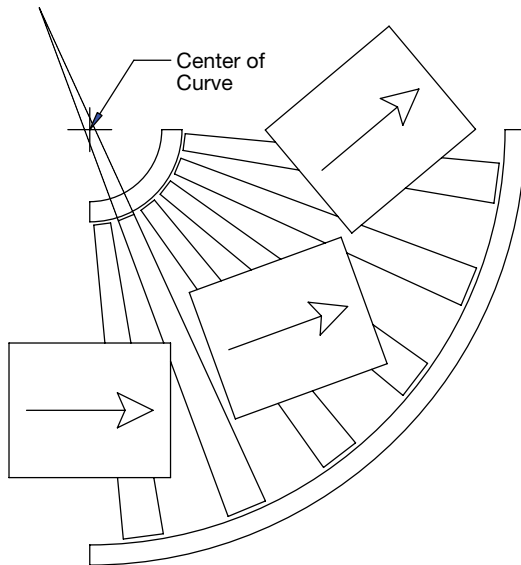
Omni has a line of pre-engineered tapered rollers to meet your conveyor curve application needs. This section is specifically devoted to information unique to tapered rollers.

Tapered rollers are used in gravity or powered conveyor turns. Tapered rollers are designed to match the inside radius of the

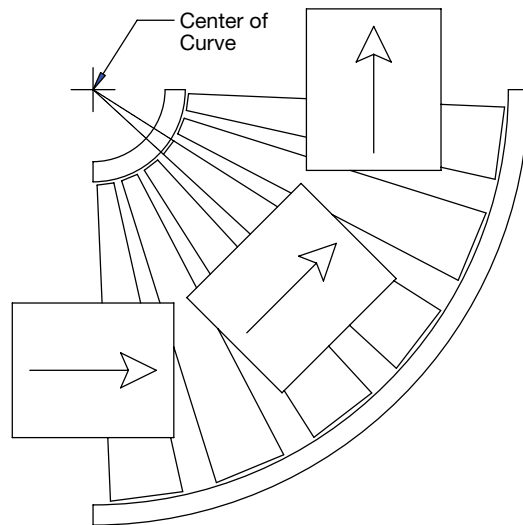
Example Equation

300 lbs. capacity roller x 3 rollers = 900 lbs.

900 lbs. x 2/3 Rule = 600 lbs. load capacity per 3 rollers



- If the taper rate is not true for a given curve then the product will become skewed around the curve.



- If the taper rate is true it increases the likelihood of maintaining leading edge product orientation through the curve.

TAPER SPECIFIC INFORMATION (CONTINUED)

TAPER ROLLER TUBE SIZES AND MATERIAL OPTIONS

- Two standard taper tube sizes both available in mild steel and galvanized steel
- 1-1/2" OD to 1" OD x 18 Ga wall with a flat section at the large end (1/2" to 4-1/2" of flat depending on BF)
- 2-1/2" OD to 1-11/16" OD x 14 Ga wall with a flat section at the large end (1/2" to 8-11/16" of flat depending on BF)

TAPER ROLLER AXLE RETENTION AND MATERIAL OPTIONS

- 1-1/2" OD to 1" OD tapers are standard with 5/16" hex axles
- All larger tapers are standard with 7/16" hex axles
- All tapers are available in spring or cotter pin retention
- Other retention styles and axle sizes are available upon request

TAPER ROLLER SPROCKET INFORMATION

(reference quote sheet drawing page 11)

- Sprockets available standard on 2-1/2" OD to 1-11/16" OD tapers
- Standard sprockets are A-plate for 40 and 50 series chain
- Sprockets are placed on the large OD end as a standard. Sprockets can be placed anywhere along the length of the tube provided they are clear of the bearing and will not cause chain interference.

TAPER ROLLER GROOVE INFORMATION

(reference quote sheet drawing page 11)

- Narrow grooves are available on 1-1/2" OD to 1" OD and 2-1/2" OD to 1-11/16" OD tapers
- Wide grooves are only available on 2-1/2" OD to 1-11/16" OD tapers
- Grooves can only be placed on the tapered section of the roller provided they are clear of the bearing and are no more than 3-3/4" inches from the end of the tube

CUSTOMIZING ROLLERS

Flanges – Flanges can be welded to the tube to guide the product. Standard flanges are available for 1.9", 2-1/2", 2-9/16" and 3-1/2" OD rollers. Other sizes may be available upon request.

Center Support Puck – Center support pucks can be installed in a roller to provide extra roller capacity at longer lengths. Pucks are available for most axles 11/16" hex and smaller.

Ultrax Sleeves – Loose fitting Ultrax sleeves installed over sprocketed rollers are designed to be able to spin on the roller surface for low pressure accumulation applications.

Boss – Steel plate designed to fit in the ID of the tube. As a standard, these plates are recessed into the tube and welded in place. The plate is designed to fit the corresponding bearing or to be welded directly to the axle.

Heat Treat – All heavy-wall rollers (11 Ga and thicker) are available with a hardened tube surface. This provides extra resistance to surface wear and dents. Omni has two different heat treat standards. They are dependent on the length of the roller.

- Rollers up to 60" will be to a Rockwell C 58-62 Hardness with a Case Depth of .018"-.022"
- Rollers 60" to 84" will be to a minimum of Rockwell C 40 Hardness with a Case Depth of .035"
- Special heat treat specifications may be available

FINISHES

■ **Zinc Plating** – All mild steel roller tubes and axles are available in one of our two standard zinc plating colors; gold or silver/clear. Zinc plating is a highly corrosion resistant finish with aesthetic appeal. Other types of material plating may be available.

■ **Powder Coat** – A paint application process where a powder material is applied to the surface of the roller using an electrostatic charge. The applied powder is then heat cured to form a smooth, very durable finish. Available in a clear coat or any of Omni's color options.

■ **Sand Blasting** – Can be used to give a matte/non-reflective finish to the tube

SPECIAL ODS (STRAIGHT ROLLERS)

- Standard press fit bearings can be used with special OD tubes
- Bearings can be press fit directly into the tube if the tube wall is of sufficient thickness
- If the bearings do not fit directly into the tube a boss can be used
- Neither design option can be used with crimp style bearings

SPECIAL ODS (TAPER ROLLERS)

Special large end and/or small end ODs can be manufactured upon request depending on the roller construction.

- Tapers can start as large as 5" OD and go down to 1" OD
- Special tapers can be manufactured as true tapers to fit most radii
- Special tapers can be made with no flat on the large end
- Some special tapers are available with grooves. This is determined based on the size and length of the taper tube.

WELD-OVER TAPER SHELL

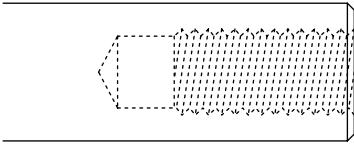
These tapered tubes are designed to fit over a straight roller and be welded in place. It is recommended that the small end of the taper is a minimum of 1/4" larger than the straight roller OD

AXLE MACHINING

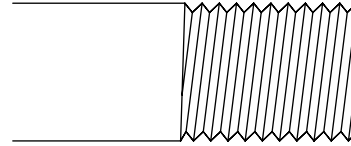
Omni can provide optional axle retention/machining. Page 7 are some of the axle machining options that are available. (enlarged to show detail)

AXLE MACHINING OPTIONS

Drill and Tap (Female Thread)



Threaded (Male Thread)



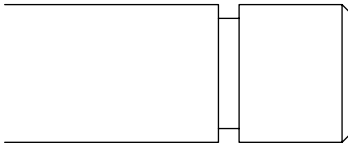
Milled Flat



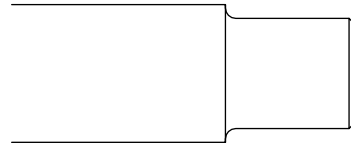
Milled Slot



Snap Ring Groove



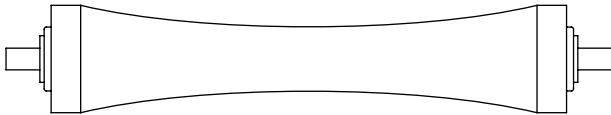
Turn Down



SPECIAL TUBE CONSTRUCTION

Omni can provide special tube construction for many different applications. Below are some of the different tube construction options that are available.

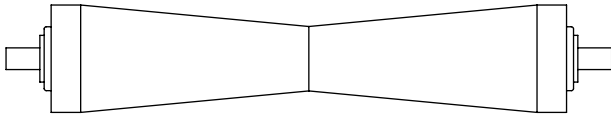
Concave Roller



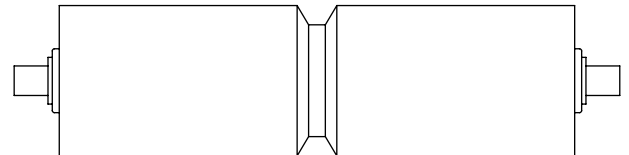
Sprocketed Hub



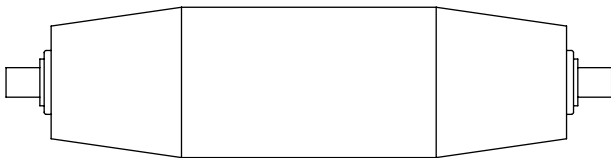
Bow-Tie Roller



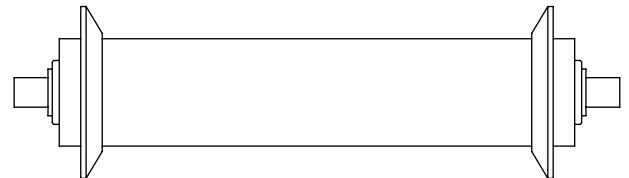
V-Groove Hub



Trapezoidal Crown



Flanges



STAINLESS STEEL ROLLER INFORMATION

Premium Class (P-Class)

P-class rollers are made from all stainless steel components and are intended for use in frequent washdown, high corrosive and food processing applications.

- Manufactured with 304 stainless steel, mill finish materials (unless otherwise noted)
- Stainless steel or polymer roller bearings
- Washdown rated
- Stainless steel sprockets and fasteners
- FDA/USDA approved materials
- Continuous MIG welds
- Rollers with thru-bore bearings are NOT water-tight; liquid may become trapped inside

Additional Options

- Polished stainless steel finishes
- 316 stainless steel materials
- Special "water-tight" roller designs utilizing blind bore bushings



Deluxe (D-Class)

D-class rollers are made of combinations of corrosion-resistant material and carbon steel materials. They are intended for use in occasional washdown and low corrosive applications.

- Standard roller designs (zinc plated, galvanized, PVC, stainless steel or aluminum tubing)
- General purpose roller bearings
- General purpose sprockets and chain
- Zinc plated fasteners
- Rollers with thru-bore bearings are NOT water-tight; liquid may become trapped inside



Surface Finishes Available

Mill Finish – Mill Finish also known as unpolished finish is the standard finish for rollers unless otherwise requested by the customer. A mill finish is a bright, smooth, semi-reflective and non-directional finish. Exact visual appearance can vary based on different grades and thicknesses of stainless steel. Pitting, scratches, welds and tool marks may be visible on the surface. These blemishes cannot be blended to recreate an original mill finish appearance. These areas will remain blemished unless additional surface finishing operations are performed.



Glass Bead Blasted Finish – Glass bead blasting produces a bright uniform matte or frosted finish with low reflectivity and no directionality. It reduces glare from shiny stainless steel while retaining a smooth feel. Although the surface has a consistent look it may contain pits and scratches. The maximum surface roughness is Ra of 125 micro-inches.



Sand Blasted Finish – Sand blasting, similar to glass bead blasting, uses a more abrasive medium. This produces a duller and less smooth finish than glass bead blasting. The surface may contain pits and scratches.



Polished Finish – Also known as brushed or satin finish. A polished finish is the result of additional mechanical operations which include grinding, polishing and buffing that are intended to change the appearance and condition of stainless steel metal surfaces. The most common stainless steel cosmetic polished finish is described as a No. 4 finish. It is a bright, uni-directional finish with a visible "grain" which prevents mirror reflection. It is obtained by finishing with a 120-150 mesh abrasive, following initial grinding with coarser abrasives and has a surface roughness with a maximum Ra of 32 micro-inches. Areas where welds and tool marks were cleaned up can be blended or repaired by using the same or similar polishing methods that were used to create the original polished finish. Sprocketed rollers can only be polished on the effective width.



STAINLESS STEEL ROLLER INFORMATION (CONTINUED)

Bushings (Roll End Bearings)

Bushings, or Roll End Bearings, can be used in place of traditional ball bearings in rollers. In applications with speeds less than 150 FPM they offer many advantages.

- No moving parts to break down
- No lubrication to be washed away or dry out
- Equivalent load capacity to ball bearings
- Fit in any tube size or tube material
- Can be custom built for uncommon tube and axle size combinations
- Blind bore designs with stub axles for "water-tight" rollers
- Free-draining designs
- Available in a wide variety of materials



Based on the material they are made from bushings can be used in many applications.

- Sanitary and food applications
- High temperature applications (up to 550° F)
- Low temperature applications (down to -50° F)
- Excessively abrasive dust or debris applications
- Underwater applications
- Corrosive environments

BEARING SELECTION GUIDE

WHY THIS BEARING?

		Capacity	Speeds	Conveyor Types	Environment	Noise Level
	<p>Plastic</p> <ul style="list-style-type: none"> • Lowest capacity • No lubrication required • Capable of operating submerged in liquid • Not for use with high speeds or powered conveyor • Ideal for washdown with harsh detergents • Molded plastic bodies and stainless steel balls 	Low	Low	Light Duty Gravity Conveyor	Corrosive Wet	High
	<p>Unground Crimped (Non-Precision)</p> <ul style="list-style-type: none"> • Most cost effective • Lowest coefficient of friction, easiest to turn • Zinc plated for mild corrosion resistance • Not for use with high speeds • Stamped metal housing with very loose tolerances • Full complement of balls which are not separated 	Low	Low	Gravity and Lineshaft Conveyor	Mild	High
	<p>Unground Press Fit (Non-Precision)</p> <ul style="list-style-type: none"> • More capacity than crimped • Can be replaced for longer roller life • More sealing options available • Zinc plated for mild corrosion resistance • Stamped metal housing with very loose tolerances • Full complement of balls which are not separated 	Medium	Medium	Gravity and Powered Conveyor	Mild	High
	<p>Semi-Precision</p> <ul style="list-style-type: none"> • More capacity than unground • Capable of higher speeds than unground • Superior seals over unground • Can be replaced for longer roller life • Machined metal housings with tighter tolerances • Ball retainer keeps the balls separated and evenly spaced 	Medium High	Medium High	Heavy Duty Gravity and Powered Conveyor	Dirty	Medium
	<p>Poly Housed ABEC style (Precision)</p> <ul style="list-style-type: none"> • Most common ABEC style • Most cost effective ABEC style • Highest possible speeds • Long service life • Better seals than semi-precision 	Medium	Highest	High Speed Powered Conveyor	Mild	Low
	<p>All Metal and Insert ABEC style (Precision)</p> <ul style="list-style-type: none"> • All metal parts • Best seals and shields available • Highest capacity possible • Can be replaced for longer roller life • Insert bearings feature set-screws to lock onto axle and prevent side-to-side movement • High quality steel, heat treated to uniform hardness and ground to a micro finish • Tightest tolerances available 	Highest	High	Heavy Duty Powered and Gravity Conveyor	Very Dirty	Low
	<p>Framesaver (Precision)</p> <ul style="list-style-type: none"> • Same benefits as Poly Housed ABEC • Uses tapered hex stub axle design • Axle fits tightly in worn frame holes • Prevents additional frame wear • Metal or plastic axles available 	Medium	High	High Speed Powered Conveyor	Mild	Lowest
	<p>Bushings</p> <ul style="list-style-type: none"> • No moving parts to wear out • Uncommon sizes available • Long service life • Heavy duty capacity at slow speeds • High temp materials available • Abrasion resistant material available • Food grade materials available 	High	Low	Powered Conveyor	All	Medium

*The information provided on this bearing guide is for general reference only. There are many exceptions and we encourage you to contact our qualified staff to answer any questions you may have.

For more detailed drawings and additional bearings reference our Bearing Index.

COATINGS AND SLEEVES

Range	Durometer: Comparable To	Cost effective, generic coating. Not recommended for non-marking applications.	Used for food and non-marking applications.	Most durable	Economical, replaceable and suitable for numerous material handling applications.*
HIGHER Harder, more resistant to cutting and tearing	95A: Solid Fork Lift Tires			95A Orange Millable Urethane (MAX TEMP = 212°F) Most durable of all compounds	
				95A Black Millable Urethane (MAX TEMP = 212°F) Same as above except black in color. Not suitable for non-marking applications.	
	90A: Phone Cord	90A Black Aquaflex (MAX TEMP = 275°F) Most common black rubber compound		90A Orange Millable Urethane (MAX TEMP = 212°F) Mid-range urethane compound	90A Green Urethane (MAX TEMP = 185°F) Most durable sleeve option
	80A: Shoe Heel	80A Black Neoprene (MAX TEMP = 250°F) Meets some specific food grade requirements	80A Off-White Nitrile (MAX TEMP = 230°F) Most durable food grade compound	80A Orange Millable Urethane (MAX TEMP = 212°F) Mid-range urethane compound (available in red also)	83A Orange Urethane (MAX TEMP = 185°F) Most common for roller coverings (available in black also)
LOWER Softer, better cushion for product protection, reduces noise and more grip for driving force	70A: Running Shoe Sole	70A Black Carboxylated Nitrile (MAX TEMP = 275°F) Most common pulley lagging		70A Black Millable Urethane (MAX TEMP = 212°F) Softest urethane compound Common for pulley laggings	
	65-60A: Car Tire Tread	65A Black Aquaflex (MAX TEMP = 275°F) Most common soft black rubber			
		60A Black Neoprene (MAX TEMP = 250°F) Most commonly used in glass handling	60A Off-White Carboxylated Nitrile (MAX TEMP = 275°F) Mid-range food grade compound		60A Gray Vinyl (MAX TEMP = 160°F) Higher chemical resistance than urethane sleeves
		60A Black SBR (MAX TEMP = 220°F) Softest back rubber compound	60A Off-White Neoprene (MAX TEMP = 250°F) Same durometer as above but different chemical resistances		
40A: Pencil Eraser		40A Tan Natural Rubber (MAX TEMP = 212°F) Softest of all compounds			



*Installation tool available. Contact one of our customer service representatives for more information.

ADDITIONAL OPTIONS AVAILABLE

TAPERED URETHANE SLEEVES

- Convert standard straight rollers into tapered rollers

GROOVES

- Multiple patterns available

PROFILES

- Concave, convex, crowned, bow-tie and tapered



Red Urethane Coated 6" Rollers



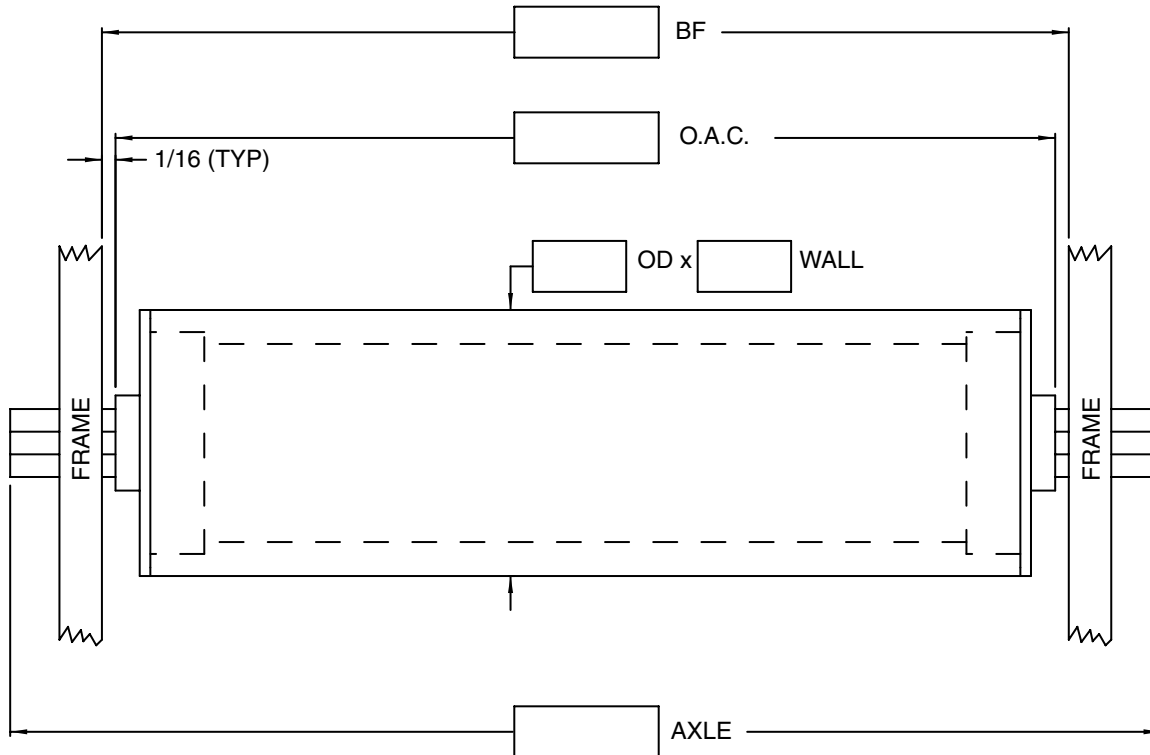
Machined Bow-Tie Profile Millable Urethane Coated Rollers

GRAVITY ROLLER QUOTATION WORKSHEET

Company: _____ Date: _____
 Contact: _____ Quote Due: _____ Desired Delivery: _____
 Phone No.: _____ Contact Email: _____ State: _____
 Omni Sales Contact: _____ Quote #: _____

Quantity: _____ Type of Bearing: _____
 Between Frame Width (BF): _____ Axle Size: _____ (Hex or Round)
 Overall Cone (OAC) (if roller is not in frame): _____ Axle Length: _____ (or Standard)
 Roller Diameter: _____ Pin Retained: _____
 Wall Thickness (Gauge): _____ Spring Retained: _____
 Tube Material/Finish: _____ Load Capacity Required: _____

Note: Between Frame (BF) is the distance between the frames of the conveyor. The BF measurement is needed to ensure proper fit into the conveyor. If the roller is not in the conveyor provide the Overall Cone, the length of the roller from bearing tip to bearing tip. (See our Roller Measurement Guide for more information) Utilize the drawing below to depict more detailed specifications.



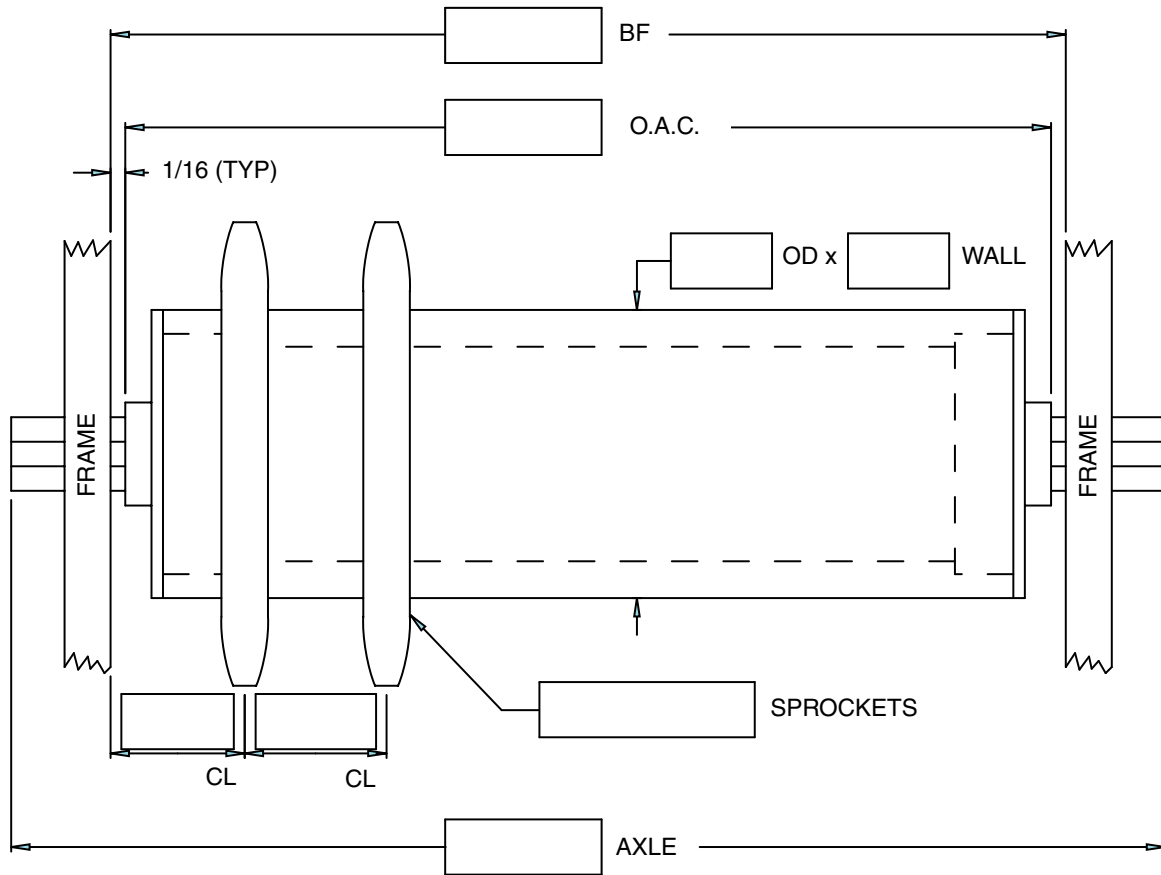
Proposal Drawing Required: Yes No

SPROCKETED ROLLER QUOTATION WORKSHEET

Company: _____ Date: _____
 Contact: _____ Quote Due: _____ Desired Delivery: _____
 Phone No.: _____ Contact Email: _____ State: _____
 Omni Sales Contact: _____ Quote #: _____

Quantity: _____ Axle Size: _____ (Hex or Round)
 Between Frame Width (BF): _____ Axle Length: _____ (or Standard)
 Overall Cone (OAC) (if roller is not in frame): _____ Pin Retained: _____
 Roller Diameter: _____ Spring Retained: _____
 Wall Thickness (Gauge): _____ Sprocket Size: _____
 Tube Material/Finish: _____ Load Capacity Required: _____
 Type of Bearing: _____

Note: Between Frame (BF) is the distance between the frames of the conveyor. The BF measurement is needed to ensure proper fit into the conveyor. If the roller is not in the conveyor provide the Overall Cone, the length of the roller from bearing tip to bearing tip. (See our Roller Measurement Guide for more information) Utilize the drawing below to depict more detailed specifications.



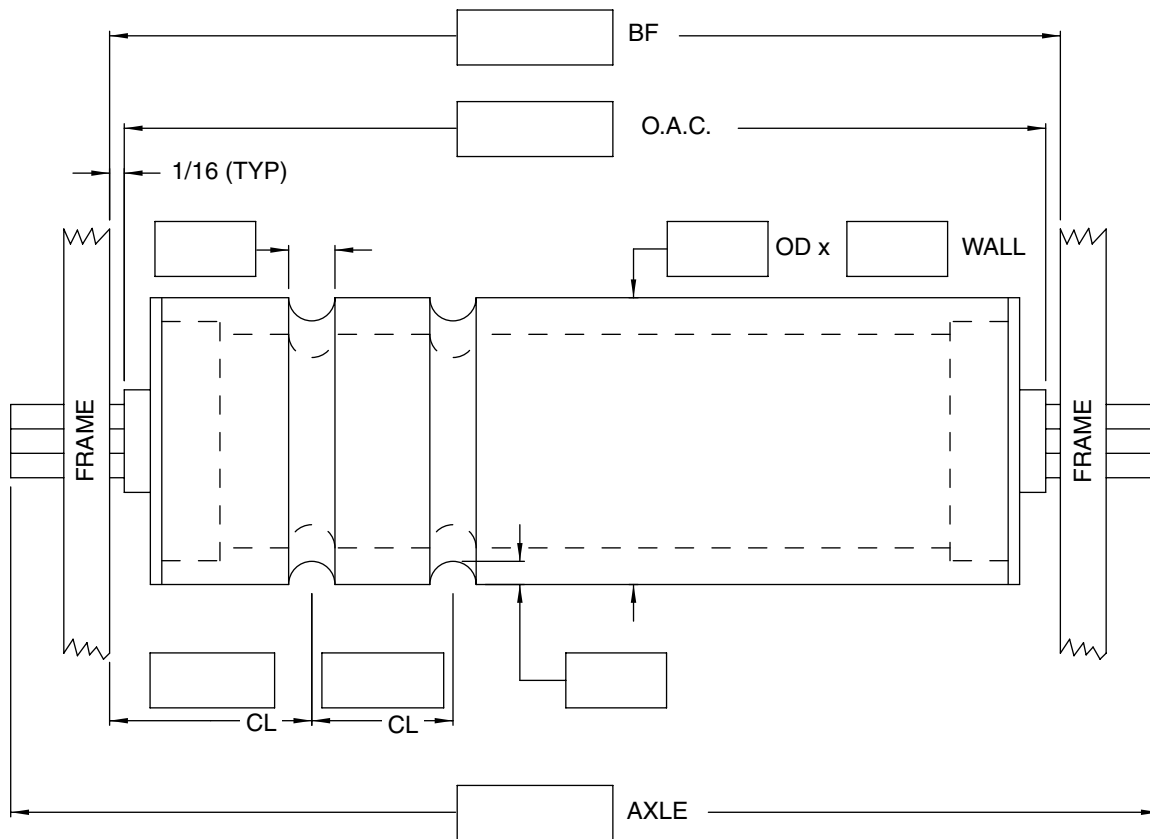
Proposal Drawing Required: Yes No

GROOVED ROLLER QUOTATION WORKSHEET

Company: _____ Date: _____
 Contact: _____ Quote Due: _____ Desired Delivery: _____
 Phone No.: _____ Contact Email: _____ State: _____
 Omni Sales Contact: _____ Quote #: _____

Quantity: _____ Axle Size: _____ (Hex or Round)
 Between Frame Width (BF): _____ Axle Length: _____ (or Standard)
 Overall Cone (OAC) (if roller is not in frame): _____ Pin Retained: _____
 Roller Diameter: _____ Spring Retained: _____
 Wall Thickness (Gauge): _____ Groove Center Line: _____
 Tube Material/Finish: _____ Load Capacity Required: _____
 Type of Bearing: _____

Note: Between Frame (BF) is the distance between the frames of the conveyor. The BF measurement is needed to ensure proper fit into the conveyor. If the roller is not in the conveyor provide the Overall Cone, the length of the roller from bearing tip to bearing tip. (See our Roller Measurement Guide for more information) Utilize the drawing below to depict more detailed specifications.



Proposal Drawing Required: Yes No

TAPERED ROLLER QUOTATION WORKSHEET

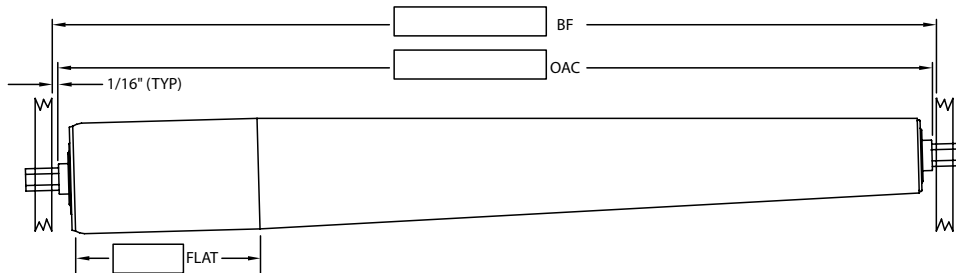
Company: _____ Date: _____
 Contact: _____ Quote Due: _____ Desired Delivery: _____
 Phone No.: _____ Contact Email: _____ State: _____
 Omni Sales Contact: _____ Quote #: _____

Quantity: _____ Axle Size: _____ (Hex or Round)
 Between Frame Width (BF): _____ Axle Length: _____ (or Standard)
 Overall Cone (OAC) (if roller is not in frame): _____ Pin Retained: _____
 Roller Diameter at Small End: _____ Spring Retained: _____
 Roller Diameter at Large End: _____ Groove Center Line: _____ (if applicable)
 Wall Thickness (Gauge): _____ Sprocket Size: _____ (if applicable)
 Tube Material/Finish: _____ Flat Length: _____ (if applicable)
 Type of Bearing: _____ Load Capacity Required: _____

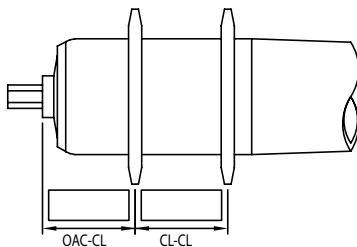
Note: Between Frame (BF) is the distance between the frames of the conveyor. The BF measurement is needed to ensure proper fit into the conveyor. The BF dimension allows 1/16" clearance between the extension on the bearing and the side frame at each end. If the roller is not in the conveyor provide the Overall Cone, the length of the roller from bearing tip to bearing tip. (See our Roller Measurement Guide for more information) Utilize the drawings below to depict more detailed specifications.

The small diameter end of a taper is meant to be installed higher in the frame than the large diameter end. The top of the tapered surface of the tube should be horizontal. The locations of features like sprockets, grooves, tapered shells and flats should be measured from the nearest bearing tip or OAC. Measurements should always be parallel with the axle to ensure proper location.

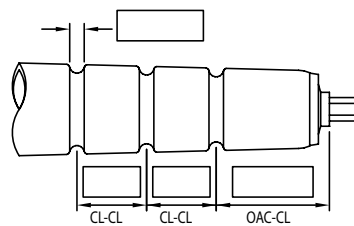
GRAVITY TAPER



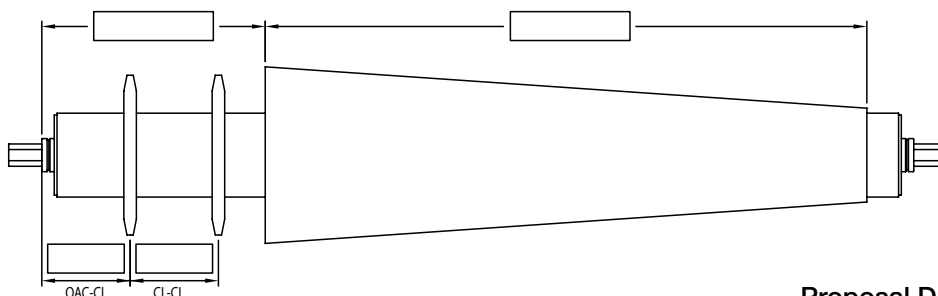
POWER TAPER



GROOVED TAPER



WELD-OVER POWER TAPER



Proposal Drawing Required: Yes No

STRAIGHT ROLLERS

1" Dia x 16 Ga
 1" Dia x 14 Ga
 1-1/4" Dia x 16 Ga

STRAIGHT Roller

Standard Specifications

1" OD x 16 Ga

Tube Material	Axle Size	Bearing Grade	Bearing Assembly	Bearing Protection	Bearing Part Number	Style	Features	Roller Part Number	
								Spring Retained	Pin Retained
Mild Steel	1/4" Dia.	Unground	Press Fit	Open	102245-O	1	N/A	29933	N/A
	5/16" Dia.				102272-O			38246	29934
Galvanized Flo-Coat	5/16" Hex				102152-O			20747	20677
								44983	N/A

1" OD x 14 Ga

Mild Steel	1/4" Dia.	Unground	Press Fit	Open	102245-O	1	N/A	28479	N/A
		ABEC		Shielded	102149 (O)	2		45435	
	5/16" Dia.	Unground		Open	102272-O	1		38247	28480

1-1/4" OD x 16 Ga

Mild Steel	5/16" Hex	Unground	Press Fit	Open	102043-O	3	N/A	43539	43538
				Sealed	102046-GP			43541	43540
	3/8" Hex			Open	102176-O			43543	43542
				7/16" Hex	102126-O			43545	43544



Load Capacity

BEARINGS	(BF) Between Frame											
	6	9	12	15	18	21	24	27	30	33	36	39
102245-O	60	60	59	59	59	59	51	43	37	31	25	20
102149	171	110	81	63	50	41	34	28	23	18	14	10
102272-O 102152-O	60	60	59	59	59	59	59	59	58	58	58	58
102043-O	149	149	149	149	148	137	117	101	88	77	67	58
102046-GP	149	149	149	149	140	117	100	86	75	65	57	49
102176-O	149	149	149	149	148	148	148	148	147	142	126	112
102126-O	149	149	149	149	148	148	148	148	147	147	147	138

STRAIGHT Roller

1-3/8" Dia x 18 Ga

Standard Specifications

1-3/8" OD x 18 Ga

Tube Material	Axle Size	Bearing Grade	Bearing Assembly	Bearing Protection	Bearing Part Number	Style	Features	Roller Part Number	
								Spring Retained	Pin Retained
Aluminum	1/4" Dia.	Unground	Crimped	N/A	115901-O	1	N/A	25898	N/A
Galvanized Flo-Coat		ABEC		Shielded	114234-O	2		25904	
	Unground	N/A		102228-O	1	42411			
	ABEC	Shielded		114233-O	2	N/A	26356	28740	
				114231-GP			42373	42374	
5/16" Hex	ABEC	Shielded		114231-GP	2	N/A	42369	42370	

STYLE ONE



STYLE TWO



Load Capacity

BEARINGS	(BF) Between Frame											
	6	9	12	15	18	21	24	27	30	33	36	39
115901-O	94	93	74	58	47	39	32	27	23	19	15	12
114234-O	142	114	83	65	53	44	37	31	26	22	18	14
102228-O 102228-GP	120	119	119	119	119	119	107	92	80	70	61	53
114233-O 114231-GP	295	294	252	198	162	136	117	101	88	77	67	58

1-3/8" Dia x 16 Ga

STRAIGHT Roller

Standard Specifications

1-3/8" OD x 16 Ga

Tube Material	Axle Size	Bearing Grade	Bearing Assembly	Bearing Protection	Bearing Part Number	Style	Features	Roller Part Number	
								Spring Retained	Pin Retained
Mild Steel	1/4" Dia.	Unground	Crimped	Open	115901-O	1	N/A	27829	N/A
	1/4" Hex				102178-O			39622	28481
	5/16" Dia.				102241-O			37819	28482
					102228-O			11439	28468
	5/16" Hex	Semi-Precision	Press Fit	Sealed and Shielded	102274-O	2		38113	41511
		ABEC	Crimped	Shielded	114231-GP	3		41509	41510
Galvanized Flo-Coat	7/16" Hex	Unground	Press Fit	Open	110528-O	4	37974	37975	
	1/4" Dia.	Semi-Precision		Sealed and Shielded	111692-O	2		40124	
	5/16" Hex	ABEC	Crimped	Shielded	102274-GP		3	44845	N/A
					114233-O	42387		42388	
					114231-GP	42383		42384	

STYLE ONE



STYLE TWO



STYLE THREE



STYLE FOUR



Load Capacity

BEARINGS	(BF) Between Frame											
	6	9	12	15	18	21	24	27	30	33	36	39
111692-O	129	82	59	46	36	29	24	19	15	12		
102178-O	94	93	80	62	50	42	35	29	25	20	17	13
102241-O	94	93	93	93	93	86	73	63	54	47	40	34
102228-O	120	119	119	119	119	118	106	92	80	69	60	52
102274-O	288	251	184	144	117	98	83	71	61	52	44	37
102274-GP												
114233-O	295	294	252	198	162	136	116	100	87	76	66	57
114231-GP												
110528-O	395	395	395	394	394	394	341	299	264	235	210	186

STRAIGHT Roller

1-3/8" OD x 3/16"

Standard Specifications

1-3/8" OD x 3/16" Wall

Tube Material	Axle Size	Bearing Grade	Bearing Assembly	Bearing Protection	Bearing Part Number	Style	Features	Roller Part Number	
								Spring Retained	Pin Retained
Mild Steel	5/16" Hex	Unground	Press Fit	Open	102043-O	1	N/A	28485	28486
				Sealed	102046-GP			22708	28487
				Sealed and Shielded	113365-O	45129		45128	
		Semi-Precision	Crimped	Shielded	113365-GP	2		45131	45130
					114233-O			3	42401
					114231-GP	42397			42398
	3/8" Dia. 3/8" Hex 7/16" Hex 1/2" Dia.	Unground	Press Fit	Open	102173-GP	1	38186	28488	
					102176-O		38188	28489	
					102126-O		24934	24935	
					102172-GP		37948	28490	

STYLE ONE



STYLE TWO



STYLE THREE



Load Capacity

BEARINGS	(BF) Between Frame														
	6	9	12	15	18	21	24	27	30	33	36	39	42	45	48
102043-O	149	148	148	147	147	135	115	98	85	73	63	53	45	37	29
102046-GP	149	148	148	147	138	115	98	83	72	61	52	44	37	30	23
113365-O 113365-GP	287	249	182	142	115	95	80	67	57	48	40	32	25	19	12
114233-O 114231-GP	294	293	250	196	160	134	113	97	84	72	62	53	44	36	29
102173-GP	149	148	148	147	146	146	145	145	144	144	143	134	117	102	87
102176-O	149	148	148	147	147	146	145	145	144	138	122	107	94	82	62
102126-O	149	148	148	147	147	146	145	145	144	144	143	142	142	138	104
102172-GP	149	148	148	147	146	146	145	145	144	144	143	142	142	141	141

1-5/8" OD x 14 Ga
 1-3/4" OD x 10 Ga

STRAIGHT Roller

Standard Specifications

1-5/8" OD x 14 Ga

Tube Material	Axle Size	Bearing Grade	Bearing Assembly	Bearing Protection	Bearing Part Number	Style	Features	Roller Part Number	
								Spring Retained	Pin Retained
Mild Steel	5/16" Hex	Unground	Press Fit	Open	102145-O	1	N/A	29893	30257
	3/8" Hex				102180-O			38187	29894
	7/16" Hex				102052-O			29895	30258
		Sealed	102053-GP	40073	40072				
	ABEC	Crimped	Shielded	114235-GP	2	42647		42648	
1/2" Dia.	Unground	Press Fit	Open	102181-O	1	37947	29896		

1-3/4" OD x 10 Ga

Tube Material	Axle Size	Bearing Grade	Bearing Assembly	Bearing Protection	Bearing Part Number	Style	Features	Spring Retained	Pin Retained
								40075	40074
Mild Steel	5/16" Hex	Unground	Press Fit	Open	102145-O	1	N/A	40077	40076
	3/8" Hex				102180-O			28510	28511
	7/16" Hex				102052-O			28534	28535
		Sealed	102053-GP	43211	43210				
	ABEC	Crimped	Shielded	114235-GP	2	40079		40078	
1/2" Dia.	Unground	Press Fit	Open	102181-O	1				

STYLE ONE



STYLE TWO



Load Capacity

BEARINGS	(BF) Between Frame																								
	6	9	12	15	18	21	24	27	30	33	36	39	42	45	48	51	54	57	60	63	66	69	72	75	78
102145-O	228	226	196	153	124	103	87	75	64	55	47	39	32	26	20										
102180-O	289	288	288	287	263	221	189	164	143	126	111	97	85	74	63	54	44	35	27	18					
102052-O 102053-GP	289	288	288	287	287	286	285	276	245	218	195	174	156	138	122	107	93	80	66	54	41	29			
114235-GP	524	523	521	506	414	349	301	262	231	205	182	163	145	129	115	101	89	77	65	54	43	33	22		
102181-O	289	288	288	287	287	286	285	284	284	283	280	252	227	204	183	163	145	127	110	94	78	62	47	32	

STRAIGHT Roller

1-7/8" OD x 13 Ga

Standard Specifications

1-7/8" OD x 13 Ga

Tube Material	Axle Size	Bearing Grade	Bearing Assembly	Bearing Protection	Bearing Part Number	Style	Features	Roller Part Number	
								Spring Retained	Pin Retained
Mild Steel	1/4" Dia.	Unground	Crimped	Open	102188-O	1	N/A	28502	
	5/16" Dia.				102259-O			38184	28503
	5/16" Hex				102248-O			40082	40081
	3/8" Dia.				102293-O			37972	40083
	3/8" Hex				102292-O			40085	40084
					115899-O			17438	17439
		102279-O	37979	37980					
	7/16" Hex	ABEC	Crimped	Shielded	114208-O	2		42255	42254
				Sealed	114135-GP			42251	42250
			Press Fit	Sealed and Shielded	114209-GP	3		42253	42252
					114621-GP	3		43501	43502
	1/2" Dia.	Unground	Crimped	Open	102255-O	1		40087	40086

STYLE ONE



STYLE TWO



STYLE THREE



Load Capacity

BEARINGS	(BF) BETWEEN FRAME																									
	6	9	12	15	18	21	24	27	30	33	36	39	42	45	48	51	54	57	60	63	66	69	72	75	78	81
102188-O	167	132	96	75	60	49	41	34	28	22	18	13														
102259-O	269	269	223	175	143	119	101	87	75	64	55	46	39	31	25											
102248-O	269	269	268	215	176	147	126	108	93	81	70	60	51	42	34											
102293-O	269	269	268	268	267	254	218	189	165	145	128	112	98	85	73	62	51	40	30	20						
102292-O	269	269	268	268	267	267	266	234	205	181	160	142	125	110	95	82	69	57	45	34						
115899-O																										
115899-GP	269	269	268	268	267	267	266	266	266	265	265	264	251	225	201	179	158	138	120	101	84	67	50	33		
102279-O																										
114621-GP	681	680	618	485	398	335	288	250	220	194	171	152	134	117	102	88	75	62	49	37						
102255-O	269	269	268	268	267	267	266	266	266	265	265	264	264	263	263	262	237	211	187	163	140	118	97	76	55	34

1.9" OD x 16 Ga

STRAIGHT Roller

Standard Specifications

1.9" OD x 16 Ga

Tube Material	Axle Size	Bearing Grade	Bearing Assembly	Bearing Protection	Bearing Part Number	Style	Features	Roller Part Number	
								Spring Retained	Pin Retained
Mild Steel	1/4" Dia. 5/16" Dia. 5/16" Hex 3/8" Dia. 3/8" Hex	Unground	Crimped	Open	102188-O	1	N/A	28491	
					102259-O			41530	41529
					102248-O			28494	28495
					102293-O			37973	30502
					102292-O			38185	28497
	115899-O	23616		24877					
	102279-O	37977		37978					
	7/16" Hex	ABEC		Shielded	114208-O	2		42199	42198
				Sealed	114135-GP			42070	42069
				114209-GP	42197			42196	
1/2" Dia.	Unground	Open	102255-O	1	37818	28429			
7/16" Hex	ABEC	Open	115899-O		45072	41528			
			115899-GP		26157	45071			
		Shielded	114208-O	2	42203	42202			
		114135-GP	42072		42071				
Sealed	114209-GP	3	42201	42200					
1/2" Dia.	Unground	Open	102255-O	1	45378	45379			
			115899-GP		45030	N/A			
			114135-GP		45369				
7/16" Hex	ABEC	Shielded	114135-GP	2	45370				
			114209-GP		45416				



Load Capacity

BEARINGS	(BF) BETWEEN FRAME																									
	6	9	12	15	18	21	24	27	30	33	36	39	42	45	48	51	54	57	60	63	66	69	72	75	78	81
102188-O	167	133	97	75	61	50	42	35	29	24	19	15														
102259-O	269	269	224	176	144	120	102	88	76	66	56	48	41	33	27											
102248-O	269	269	269	216	177	148	127	109	95	82	72	62	53	44	37											
102293-O	269	269	269	268	268	255	219	190	167	147	129	114	100	87	75	64	53	43	33	23						
102292-O	269	269	269	268	268	268	267	235	207	183	162	143	127	112	97	84	72	60	48	36						
115899-O 115899-GP 102279-O	269	269	269	268	268	268	267	267	267	267	266	266	253	227	203	181	161	141	122	104	87	70	53	36		
102255-O	269	269	269	268	268	268	267	267	267	267	266	266	266	265	265	265	239	214	189	166	143	121	100	79	58	38
114208-O 114135-GP 114209-GP	501	500	498	485	398	336	289	253	223	198	177	158	142	127	113	100	89	77	67	56	46	36	27			
116028-GP	599	599	592	466	382	322	277	241	212	187	166	147	130	115	100	87	74	62	50	38	27	16				

STRAIGHT Roller

1.9" OD x 12 Ga

Standard Specifications

1.9" OD x 12 Ga

Tube Material	Axle Size	Bearing Grade	Bearing Assembly	Bearing Protection	Bearing Part Number	Style	Features	Roller Part Number	
								Spring Retained	Pin Retained
Mild Steel	7/16" Hex	Unground	Crimped	Shielded	115899-GP	1	N/A	44540	44541
		ABEC			114135-GP	2		44896	N/A

STYLE ONE



STYLE TWO



Load Capacity

BEARINGS	(BF) Between Frame																							
	6	9	12	15	18	21	24	27	30	33	36	39	42	45	48	51	54	57	60	63	66	69	72	75
115899-GP	269	269	269	268	268	268	267	267	267	267	266	266	253	227	203	181	161	141	122	104	87	70	53	36
114135-GP	501	500	498	485	398	336	289	253	223	198	177	158	142	127	113	100	89	77	67	56	46	36	27	

1.9" OD x 9 Ga

STRAIGHT Roller

Standard Specifications

1.9" OD x 9 Ga

Tube Material	Axle Size	Bearing Grade	Bearing Assembly	Bearing Protection	Bearing Part Number	Style	Features	Roller Part Number		
								Spring Retained	Pin Retained	
Mild Steel	7/16" Hex	Unground	Press Fit	Labyrinth Shield	102051-O	1	N/A	11386	11379	
			Crimped	Sealed	102051-GP			44897	N/A	
		Semi-Precision	Press Fit	Sealed and Shielded	113500-GP	2	Regreaseable	42026		
			Press Fit	Sealed and Shielded	102155-GP			3	25275	25274
		ABEC	Crimped	Sealed	Shielded	114208-O	4	N/A	42219	42218
					Sealed	114135-GP			42215	42214
	Press Fit		Sealed and Shielded	Sealed	114209-GP	42217	42216			
				Sealed and Shielded	114621-GP	5	43499	43500		
	5/8" Dia.	3/4" Dia.	Press Fit	Sealed	102187-GP	6	N/A		28508	
					102186-GP				28509	
Galvanized Flo-Coat	7/16" Hex	Unground	Press Fit	Labyrinth Shield	102051-O	1	N/A	44898	39486	
			Crimped	Sealed	102155-GP			3	45349	45350
		Semi-Precision	Press Fit	Sealed and Shielded	Shielded	114208-O	4	N/A	42225	42224
					Sealed	114135-GP			42221	42220
		ABEC	Crimped	Sealed	Sealed	114209-GP	42223	42222		
					Press Fit	Sealed and Shielded	114621-GP	5	43505	43506



Load Capacity

BEARINGS	(BF) Between Frame															
	6	12	18	24	30	36	42	48	54	60	63	66	72	78	84	90
102051-O 102051-GP	299	297	296	295	292	231	184	146	113	83	69	55	29			
113500-GP	602	598	473	343	264	208	166	131	101	74	61	49	25			
102155-GP	565	518	331	238	181	140	108	81	57	35	25					
114208-O 114135-GP 114209-GP	500	497	396	286	219	173	137	107	82	59	49	38				
114621-GP	681	616	396	286	217	168	130	98	70	44	32					
102187-GP	700	700	700	564	436	348	281	228	183	143	124	106	71			
102186-GP	700	700	700	700	700	700	616	514	429	355	322	290	230	174	120	

STRAIGHT Roller 1-1/2 Aluminum Pipe (1.9" OD)

Standard Specifications

1-1/2 Aluminum Pipe (1.9" OD)

Tube Material	Axle Size	Bearing Grade	Bearing Assembly	Bearing Protection	Bearing Part Number	Style	Features	Roller Part Number	
								Spring Retained	Pin Retained
SCH 40 Aluminum (T6-6061)	7/16" Hex	Unground	Press Fit	Open	102051-O	1	N/A	27369	N/A
		ABEC	Crimped	Shielded	114208-O	2		42290	
				Sealed	114135-GP			42289	
				114209-GP	42288				

STYLE ONE



STYLE TWO



Load Capacity

BEARINGS	(BF) Between Frame															
	6	12	18	24	30	36	42	48	54	60	63	66	72	78	84	90
102051-O	300	299	299	298	296	236	190	153	121	92	78	65	40			
114208-O																
114135-GP	501	498	398	289	223	177	143	114	90	68	58	48	28			
114209-GP																

2" OD x 16 Ga
 2" OD x 14 Ga
 2" OD x 11 Ga

STRAIGHT Roller

Standard Specifications

2" OD x 16 Ga

Tube Material	Axle Size	Bearing Grade	Bearing Assembly	Bearing Protection	Bearing Part Number	Style	Features	Roller Part Number	
								Spring Retained	Pin Retained
Mild Steel	7/16" Hex	Unground	Crimped	Open	115902-O	1	N/A	27493	27492

2" OD x 14 Ga Rollers

Mild Steel	7/16" Hex	Unground	Press Fit	Open	102040-O	2	N/A	27422	27421
------------	-----------	----------	-----------	------	----------	---	-----	-------	-------

2" OD x 11 Ga Rollers

Mild Steel	11/16" Hex	ABEC	Press Fit	Shielded	112798-O	3	N/A	28515	28516
------------	------------	------	-----------	----------	----------	---	-----	-------	-------



Load Capacity

BEARINGS	(BF) Between Frame													
	6	12	18	24	30	36	42	48	54	60	66	72	78	84
115902-O	259	259	258	257	257	256	252	203	160	122	86	52		
102040-O	379	378	378	340	262	208	166	133	103	77	53	30		
112798-O	700	700	700	700	700	700	700	659	516	414	338	280	235	158

STRAIGHT Roller

2" x 7 Ga

Standard Specifications

2" OD x 7 Ga

Tube Material	Axle Size	Bearing Grade	Bearing Assembly	Bearing Protection	Bearing Part Number	Style	Features	Roller Part Number	
								Spring Retained	Pin Retained
Mild Steel	7/16" Hex	ABEC	Crimped	Shielded	114208-O	1	N/A	42275	42274
					114135-GP			42273	42272
			Sealed	114209-GP	42271	42270			
			Press Fit	Sealed and Shielded	114621-GP	2		43503	43504

STYLE ONE



STYLE TWO



Load Capacity

BEARINGS	(BF) Between Frame															
	6	12	18	24	30	36	42	48	54	60	63	66	72	78	84	90
114208-O																
114135-GP	500	496	395	285	217	170	134	104	79	56	45	34				
114209-GP																
114621-GP	680	615	395	284	215	166	128	96	67	41						

2-1/4" OD x 13 Ga 2-1/4" OD x 15/32" Wall

STRAIGHT Roller

Standard Specifications

2-1/4" OD x 13 Ga

Tube Material	Axle Size	Bearing Grade	Bearing Assembly	Bearing Protection	Bearing Part Number	Style	Features	Roller Part Number	
								Spring Retained	Pin Retained
Mild Steel	5/16" Hex	Unground	Crimped	Open	44832-O	1	N/A	28519	28520
	3/8" Hex				44834-O			38181	28521
					102311 (O)			11502	11498
	7/16" Hex	ABEC		102312	2	11517		11499	
		Unground		Labyrinth Shields	114734-GP	2		43638	43637
		ABEC		Open	44836-O	1		37945	28512
	1/2" Dia.			Labyrinth Shields	114735-GP	2		43640	43639

2-1/4" OD x 5/32" Wall

Mild Steel	5/8" Hex	Unground	N/A	N/A	102047-O	3	N/A	13731	13730
------------	----------	----------	-----	-----	----------	---	-----	-------	-------



Load Capacity

BEARINGS	(BF) Between Frame															
	6	12	18	24	30	36	42	48	54	60	63	66	72	78	84	90
44832-O	227	196	124	87	64	47	33	20								
44834-O	289	288	263	189	143	111	85	64	45	27						
102311 102312	289	288	287	286	276	218	174	139	108	80	67	54	29			
114734-GP	510	470	300	216	164	127	98	74	52	33	24					
44836-O	289	288	287	286	285	284	252	204	163	127	110	94	63	33		
114735-GP	599	598	421	305	233	183	144	113	85	60	48	36				
102047-O	448	446	444	443	441	439	437	436	418	350	319	289	234	183	134	87

STRAIGHT Roller

2-1/2" OD x 14 Ga

Standard Specifications

2-1/2" OD x 14 Ga

Tube Material	Axle Size	Bearing Grade	Bearing Assembly	Bearing Protection	Bearing Part Number	Style	Features	Roller Part Number	
								Spring Retained	Pin Retained
Mild Steel	5/16" Hex	Unground	Crimped	Open	44833-O	1	N/A	28522	28523
	3/8" Hex				44835-O			38183	28524
					102309 (O)			11519	11523
	7/16" Hex	ABEC		Sealed	102310	11520		11524	
					114197-GP	42336		42335	
	1/2" Dia.	Unground		Open	44837-O	1		38180	28525
	5/8" Hex	ABEC	Sealed	114198-GP	2	42332		42331	
	11/16" Hex			114199-GP		42328		42327	

STYLE ONE



STYLE TWO



Load Capacity

BEARINGS	(BF) Between Frame																
	6	12	18	24	30	36	42	48	54	60	66	72	78	84	90	96	102
44833-O	227	196	124	87	64	47	33	21									
44835-O	289	288	263	189	143	111	85	64	45	27							
102309 102310	289	288	287	286	276	218	175	139	108	80	54	30					
114197-GP	441	438	352	254	195	153	122	96	73	53	35						
44837-O	289	288	287	286	285	284	252	204	164	128	94	63	33				
114198-GP	599	598	597	596	595	594	572	480	405	340	283	231	183	137	93	50	
114199-GP	599	598	597	596	595	594	593	592	591	523	444	373	307	246	187	131	76

Standard Specifications

2-1/2" OD x 11 Ga

Tube Material	Axle Size	Bearing Grade	Bearing Assembly	Bearing Protection	Bearing Part Number	Style	Features	Roller Part Number				
								Spring	Pin	D-End		
Mild Steel	5/16" Hex	Unground	Crimped	Open	44833-O	1	N/A	28526	28527	N/A		
	3/8" Hex				44835-O			38182	28528			
	7/16" Hex				102309 (O)			11522	11525			
		102310	11521	11526								
	1/2" Dia.	Unground	Press Fit	Open	102249-O	2		40398	40399			
			ABEC	Crimped	Sealed	114193-GP		3	42304		42303	
	5/8" Hex	Unground			Press Fit	Open		44837-O	1		37944	28530
			ABEC	Crimped		Sealed		102195-O	2		37943	28531
	11/16" Hex	Unground			Press Fit	Open		102054-GP	5		28532	26430
			Labyrinth Shield	102055-GP		11547		11581				
			Shot Guard	102056-GP		11548		11582				
			Sealed	45404-GP		6		Regreaseable	N/A		11583	
		Semi-Precision	Unground	Press Fit	Sealed	102041-GP		4	N/A		39620	39621
						102229-GP			Regreaseable		15678	15677
						102139-GP		N/A	42027		21331	
						114196-GP			23417		23418	
						116029-GP			42294		42293	
						114128-GP			7		45380	45381
	3/4" Dia.	Unground	Press Fit	Sealed and Shielded	114128-GP	7		42050	42049			
				Open	102273-GP	2		N/A	29931			
				Sealed	102194-GP	4		Regreaseable	N/A		28533	
				Sealed and Shielded	45394-GP	9		N/A	N/A		N/A	45382
	3/4" Hex	Unground	Press Fit	Open	102268-GP	2		N/A	42077		29935	
				Sealed and Shielded	45395-GP	9		N/A	N/A		N/A	45383
1" Dia.	ABEC	Unground	Press Fit	Sealed and Shielded	45395-GP	9	N/A	N/A	45383			



Load Capacity - see following page

STRAIGHT Roller

2-1/2" OD x 11 Ga

Standard Specifications

2-1/2" OD x 11 Ga

Tube Material	Axle Size	Bearing Grade	Bearing Assembly	Bearing Protection	Bearing Part Number	Style	Features	Roller Part Number	
								Spring Retained	Pin Retained
Galvanized Flo-Coat	5/16" Hex	Unground	Crimped	Open	44833-O	1	N/A	45025	N/A
	3/8" Hex				44835-O			45026	
	7/16" Hex				102309 (O)			44989	
		Sealed	102310	44988					
	7/16" Hex	ABEC	Press Fit	Open	102249-GP	2		44991	44990
				Sealed	114193-GP	3		44993	44992
	1/2" Dia.	Unground	Crimped	Open	44837-O	1		42322	42321
	5/8" Hex			Press Fit	Sealed	102130-GP		4	45027
		ABEC	Crimped	Sealed	114195-GP	3		45028	
	11/16" Hex	Unground	Press Fit	Open	102054-GP	5		42316	42315
				Sealed	102041-GP	4		40978	42465
	3/4" Dia.	Unground	Press Fit	Open	114196-GP	3		42464	42463
					102273-GP	2		42310	42309
									N/A

Load Capacity

BEARINGS	(BF) Between Frame																		
	6	12	18	24	30	36	42	48	54	60	66	72	78	84	90	96	102	108	112
44833-O	227	195	123	86	62	44	30												
44835-O	289	287	262	187	141	108	82	60	41	23									
102309 102310	289	287	286	284	274	216	171	135	104	76	49	24							
102249-O 102249-GP	506	503	400	289	221	173	137	107	81	58	36								
44837-O	289	287	286	284	283	281	249	201	160	123	89	58	27						
102195-O	700	700	560	407	313	249	200	160	127	97	69	43							
102130-GP	700	700	700	700	589	486	407	341	285	235	190	148	108	70	32				
102054-GP	649	647	646	644	642	641	639	638	636	635	633	579	477	383	292	205	119	35	
102055-GP	649	647	646	644	643	641	640	638	636	626	531	445	366	292	222	153	87		
102056-GP	649	647	646	644	643	641	640	638	636	626	531	445	366	292	22	153	87		
45404-GP	700	700	700	700	700	700	678	572	485	412	347	290	237	187	139	93			
102041-GP 102229-GP	700	700	700	700	700	700	700	612	520	441	373	311	255	201	151	102	54		
102273-GP	700	700	700	700	700	700	700	700	700	599	506	421	342	267	194	124	54		
102194-GP	609	607	606	604	603	601	600	598	597	588	501	423	351	284	220	159	99	41	
102268-GP	700	700	700	700	700	700	700	700	700	700	584	493	420	361	278	196	116	52	
102139-GP	700	700	700	700	700	700	700	700	700	593	489	394	305	220	137	56			
114193-GP	441	437	350	252	192	150	118	92	69	49	30								
114195-GP	599	597	596	594	593	591	569	477	401	336	278	226	177	130	86	42			
114196-GP	599	597	596	594	593	591	590	588	587	518	439	367	301	239	180	123	68		
116029-GP	700	700	700	700	615	493	402	329	268	215	167	122	79	38					
114128-GP	700	700	700	700	700	700	700	700	700	593	489	393	304	219	137				
45394-GP	700	700	700	700	700	700	578	481	400	331	269	213	159	108					
45395-GP	700	700	700	700	700	700	700	700	700	700	638	537	457	392	339	278			

Bearing Styles pictured on page 32

2-9/16" OD x 7 Ga

STRAIGHT Roller

Standard Specifications

2-9/16" OD x 7 Ga

Tube Material	Axle Size	Bearing Grade	Bearing Assembly	Bearing Protection	Bearing Part Number	Style	Features	Roller Part Number			
								Spring Retained	Pin Retained		
Mild Steel	1/2" Dia.	Unground	Press Fit	Open	102195-O	1	N/A	37942	29936		
	102054-GP				2	11436		11433			
	102055-GP			Regreaseable		11435		11434			
	11/16" Hex			Press Fit	Shot Guard	45404-GP	3	N/A	N/A	11444	22685
						102041-GP	4		13597	13596	
	11/16" Hex			Press Fit	Sealed	102229-GP		1	Regreaseable	N/A	28537
						102194-GP	29937				
	11/16" Hex			Press Fit	Semi-Precision	Sealed	102273-GP	5	N/A	23419	23420
							102139-GP			42052	42051
	11/16" Hex			Press Fit	ABEC	Sealed and Shielded	114128-GP	5	N/A	23419	23420
							114128-GP			42052	42051



Load Capacity

BEARINGS	(BF) Between Frame																
	6	12	18	24	30	36	42	48	54	60	66	72	78	84	90	96	102
102195-O	713	708	558	404	310	244	195	154	120	89	61	34					
102054-GP	648	646	643	641	639	636	634	632	630	627	625	569	468	372	281	192	106
102055-GP	648	646	643	641	639	637	634	632	630	619	523	436	357	282	210	141	74
102056-GP	648	646	643	641	639	637	634	632	630	619	523	436	357	282	210	141	74
45404-GP	847	845	843	840	838	811	673	566	478	404	339	281	227	176	128		
102041-GP	848	846	844	841	839	837	721	606	513	434	365	302	245	191	139	89	41
102229-GP	608	606	604	601	599	597	594	592	590	580	492	413	341	273	209	147	87
102194-GP	848	846	843	841	839	836	834	832	813	694	590	497	412	332	256	182	111
102273-GP	2224	2222	2219	1910	1496	1214	1005	840	703	586	481	385	295	209	126		
102139-GP	2224	2222	2219	1910	1496	1214	1005	840	703	586	481	385	295	209	126		
114128-GP	2799	2790	2595	1910	1496	1214	1005	840	703	586	481	385	295	209	126		

STRAIGHT Roller

3" OD x 11 Ga

Standard Specifications

3" OD x 11 Ga

Tube Material	Axle Size	Bearing Grade	Bearing Assembly	Bearing Protection	Bearing Part Number	Style	Features	Roller Part Number		
								Spring	Pin	D-End
Mild Steel	11/16" Hex	Unground	Press Fit	Sealed	45150-GP	1	N/A	45258	45259	N/A
		ABEC		Sealed and Shielded	45149-GP	2		45256	45257	
	1" Dia.				45396-GP	3		N/A	N/A	45384
		45397-GP		45385						



Load Capacity

BEARINGS	(BF) Between Frame																		
	6	12	18	24	30	36	42	48	54	60	66	72	78	84	90	96	102	108	
45150-GP	848	847	845	843	841	839	723	609	516	438	369	307	250	197	146	96	48		
45149-GP	2798	2789	2595	1911	1497	1215	1007	843	707	590	485	390	300	215	133				
45396-GP	1906	1900	1525	1112	865	698	575	477	397	327	265	208	155	103	54				
45397-GP	4081	4072	4059	3225	2529	2065	1730	1472	1264	1091	941	808	687	575	470	369	272	178	

3-1/2" OD x 7 Ga

STRAIGHT Roller

Standard Specifications

3-1/2" OD x 7 Ga

Tube Material	Axle Size	Bearing Grade	Bearing Assembly	Bearing Protection	Bearing Part Number	Style	Features	Roller Part Number			
								Spring	Pin	D-End	
Mild Steel	7/16" Hex	Unground	Press Fit	N/A	45173-GP	1	N/A	45262	45263	N/A	
	5/8" Hex			Sealed	45207-GP			28540	28541		
	11/16" Hex				31439 (GP)			13948	13947		
					45208-GP			Regreaseable	N/A		40810
	3/4" Dia.	ABEC		Sealed and Shielded	44881-GP	2	N/A	44882	44883		
		Unground		N/A	45171-GP	1		N/A	45260		45386
	3/4" Hex	ABEC		Sealed and Shielded	116030-GP	3	Bosses		N/A		45387
		1" Dia.		Unground	N/A	45172-GP	1		N/A		45261
	1-1/16" Hex	Unground	Press Fit	Sealed and Shielded	113124 (GP)		Bosses		N/A	45387	
				Sealed	45053-GP	4	N/A	45055	N/A		
		Semi-Precision		45077-GP	45076						
		ABEC		Sealed and Shielded	45054-GP			45059			



Load Capacity

BEARINGS	(BF) Between Frame																							
	6	12	18	24	30	36	42	48	54	60	66	72	78	84	90	96	102	108	114	120	126	132	138	144
45173-GP	504	499	394	282	212	163	125	93	66	41														
45207-GP	847	844	841	838	719	578	474	393	326	268	217	170	126	84	44									
31439 45208-GP	847	844	841	838	835	831	714	599	504	424	354	291	232	177	125	74								
44881-GP	1997	1994	1991	1906	1491	1208	998	832	695	576	470	373	282	196	111									
45171-GP	847	844	841	838	834	831	828	825	804	684	580	485	399	318	241	167	95							
116030-GP	1903	1896	1519	1105	857	689	564	465	383	312	249	190	136	83										
45172-GP	847	844	841	838	834	831	828	825	822	818	735	624	522	428	338	252	169	88						
113124	4078	4068	4053	3218	2521	2056	1719	1460	1251	1076	924	790	668	555	448	346	248	152						
45053-GP	1203	1200	1197	1194	1190	1187	1184	1181	1178	1174	1171	1168	1165	1162	1158	1155	1152	1027	912	771	600	432	267	104
45077-GP	4127	4124	4121	4118	4114	3418	2875	2462	2132	1860	1629	1427	1246	1081	929	786	650	519	392	268	146			
45054-GP	4791	4780	4764	4742	4134	3385	2847	2437	2111	1841	1612	1412	1233	1070	919	777	642	513	387	264				

STRAIGHT Roller

3-1/2" OD x .300 Wall

Standard Specifications

3-1/2" OD x .300" Wall

Tube Material	Axle Size	Bearing Grade	Bearing Assembly	Bearing Protection	Bearing Part Number	Style	Features	Roller Part Number		
								Pin	D-End	
Mild Steel	1" Hex	Unground	Press Fit	Sealed	102314-GP	1	N/A	31444	N/A	
	1-1/16" Hex				102061-GP			11530		
					102086-GP		Regreaseable	22683		
		Semi-Precision			102101-GP	N/A	17319			
					Regreaseable	39631				
	1-1/8" Hex	ABEC			Sealed and Shielded	114249-GP	3	N/A		43621
	27949	28545								
	1-3/16" Dia.	Unground		Sealed	102197-GP	1	Regreaseable	N/A		28546
	1-7/16" Dia.	ABEC		Sealed and Shielded	45466-GP	3	N/A			45467
					24862					23238

STYLE ONE



STYLE TWO



STYLE THREE



Load Capacity

BEARINGS	(BF) Between Frame																							
	6	12	18	24	30	36	42	48	54	60	66	72	78	84	90	96	102	108	114	120	126	132	138	144
102314-GP	1201	1196	1191	1186	1181	1176	1171	1165	1160	1155	1150	1145	1140	1135	1130	1090	924	766	613	464	319	175		
102061-GP 102086-GP	1201	1196	1191	1186	1181	1176	1171	1165	1160	1155	1150	1145	1140	1135	1130	1124	1119	1093	910	733	560	391	161	
102101-GP	4126	4120	4115	4110	4105	3408	2863	2448	2117	1843	1609	1405	1222	1056	902	757	619	486	357	231	107			
114249-GP	4791	4777	4759	4736	4125	3374	2834	2423	2095	1823	1592	1389	1209	1044	891	747	611	479	351	227				
27949	6985	6968	6945	6915	6878	6726	5741	5004	4432	3909	3466	3084	2748	2447	2172	1919	1682	1457	1243	1036	836	635		
102197-GP	2496	2491	2485	2480	2475	2470	2465	2460	2455	2450	2444	2439	2263	2013	1785	1575	1378	1192	1015	844	678	516	356	
45466-GP	6055	6050	6045	6040	6035	6029	5204	4481	3911	3445	3053	2715	2418	2151	1909	1685	1476	1278	1089	906	730	557	387	
24862	7995	7990	7985	7980	7975	6823	5812	5058	4475	4009	3628	3311	3043	2682	2316	2016	1767	1559	1382	1231	1100	986	887	799

Standard Specifications

4" OD x 10 Ga

Tube Material	Axle Size	Bearing Grade	Bearing Assembly	Bearing Protection	Bearing Part Number	Style	Features	Roller Part Number	
								Pin	D-End
Mild Steel	3/4" Dia.	ABEC	Press Fit	Sealed	116030-GP	1	Bosses	NA	45388
	1" Dia.				113124 (GP)				45389
	1-1/8" Hex			Sealed and Shielded	27956 (GP)	2	N/A	28548	N/A
	1-3/16" Dia.				27957 (GP)			N/A	28549
	1-3/8" Dia.				45104-GP				45112
	1-7/16 Dia.				45103-GP				45111

STYLE ONE



STYLE TWO



Load Capacity

BEARINGS	(BF) Between Frame																							
	6	12	18	24	30	36	42	48	54	60	66	72	78	84	90	96	102	108	114	120	126	132	138	144
116030-GP	1902	1894	1518	1105	857	689	585	467	385	314	251	194	138	87										
113124	4077	4067	4053	3218	2521	2057	1720	1461	1253	1078	927	793	671	559	452	351	253	158						
27956	6987	6972	6951	6923	6081	5043	4305	3754	3326	2984	2705	2472	2275	2106	1959	1723	1516	1343	1196	1071	885	691	501	313
27957	6057	6054	6052	6049	6046	5079	4332	3774	3342	2997	2715	2481	2282	2112	1942	1721	1514	1318	1131	951	777	607	439	274
45104-GP	7997	7995	7992	7821	6187	5116	4358	3794	3358	3010	2726	2490	2290	2119	1970	1751	1540	1363	1213	1085	975	879	795	722
45103-GP																								

STRAIGHT Roller

4" OD x 1/4" Wall

Standard Specifications

4" OD x 1/4" Wall

Tube Material	Axle Size	Bearing Grade	Bearing Assembly	Bearing Protection	Bearing Part Number	Style	Features	Roller Part Number	
								Pin	D-End
Mild Steel	1-1/8" Hex	ABEC	Press Fit	Sealed and Shielded	45102-GP	1	N/A	45110	N/A
	1-3/16" Dia.				45101-GP			N/A	45109
	1-3/8" Dia.				27955			N/A	28550
	1-7/16" Dia.				24864			N/A	45106

STYLE ONE



Load Capacity

BEARINGS	(BF) Between Frame																							
	6	12	18	24	30	36	42	48	54	60	66	72	78	84	90	96	102	108	114	120	126	132	138	144
45102-GP	6985	6968	6945	6915	6878	6834	5895	5080	4437	3910	3467	3085	2749	2448	2174	1920	1683	1459	1245	1038	838	642	450	260
45101-GP	6055	6050	6045	6040	6035	6030	5203	4481	3911	3445	3053	2715	2418	2152	1910	1686	1477	1279	1090	908	731	558	389	222
27955	7995	7990	7985	7980	7975	7970	6808	5926	5243	4699	4254	3884	3571	3303	3070	2727	2396	2119	1884	1683	1510	1352	1122	898
24864	7995	7990	7985	7980	7975	7970	6808	5926	5243	4699	4254	3884	3571	3303	3070	2727	2396	2119	1884	1683	1510	1360	1228	1112

4" OD x 1/2" Wall

STRAIGHT Roller

Standard Specifications

4" OD x 1/2" Wall

Tube Material	Axle Size	Bearing Grade	Bearing Assembly	Bearing Protection	Bearing Part Number	Style	Features	Roller Part Number	
								Pin	D-End
Mild Steel	1-1/16" Hex	Unground	Press Fit		102086-GP	1	Regreaseable	28551	N/A
		Semi-Precision			102101-GP	2	28552		
	1-1/8" Hex	ABEC		Sealed and Shielded	27949	3	N/A	28553	
					27951			N/A	28554
	1-3/8" Dia.	24862		N/A	N/A				24875
								N/A	N/A

STYLE ONE



STYLE TWO



STYLE THREE



Load Capacity

BEARINGS	(BF) Between Frame																							
	6	12	18	24	30	36	42	48	54	60	66	72	78	84	90	96	102	108	114	120	126	132	138	144
102086-GP	1198	1188	1179	1170	1160	1151	1142	1132	1123	1114	1104	1095	1086	1076	1067	1057	1048	1019	832	650	473	299		
102101-GP	4122	4113	4103	4094	4085	3384	2834	2415	2079	1801	1563	1355	1168	997	839	690	548	411	277					
27949	6981	6961	6933	6898	6857	6809	5866	5047	4399	3868	3420	3034	2694	2388	2110	1852	1610	1382	1163	952	748	548	350	
27951	7992	7983	7973	7964	7955	7945	7936	7172	6275	5547	4939	4419	3966	3564	3201	2869	2563	2276	2004	1746	1498	1257	1024	795
24862	7992	7983	7973	7964	7955	7945	7936	7927	7536	6672	5953	5340	4806	4334	3910	3523	3166	2834	2521	2223	1939	1664	1398	1101

STRAIGHT Roller

4-1/4" OD x 1/4" Wall
4-1/4" OD x 7/16" Wall

Standard Specifications

4-1/4" OD x 1/4" Wall

Tube Material	Axle Size	Bearing Grade	Bearing Assembly	Bearing Protection	Bearing Part Number	Style	Features	Roller Part Number	
								Pin	D-End
Mild Steel	1-3/16" Dia.	ABEC	Press Fit	Sealed and Shielded	27957	1	N/A	N/A	28555

4-1/4" OD x 7/16" Wall

Mild Steel	1-1/4" Hex	Unground	Press Fit	Sealed	102205-GP	2	N/A	28033	N/A
	1-7/16" Dia.	ABEC		Sealed and Shielded	24864-GP	1	N/A	N/A	28556

STYLE ONE



STYLE TWO



Load Capacity

BEARINGS	(BF) Between Frame																							
	6	12	18	24	30	36	42	48	54	60	66	72	78	84	90	96	102	108	114	120	126	132	138	144
27957	6055	6050	6044	6039	6034	6028	5200	4478	3907	3440	3048	2710	2413	2146	1904	1680	1470	1272	1083	900	723	550	380	213
102205-GP	4493	4484	4475	4466	4457	4448	4439	4430	4421	4412	4098	3657	3272	2929	2619	2334	2070	1822	1587	1363	1146	936	731	530
24864	7992	7983	7975	7966	7957	7948	7939	7930	7539	6676	5957	5344	4811	4339	3915	3529	3173	2841	2528	2231	1947	1673	1407	1148

5" OD x 1/4" Wall 5" OD x 3/4" Wall

STRAIGHT Roller

Standard Specifications

5" OD x 1/4" Wall

Tube Material	Axle Size	Bearing Grade	Bearing Assembly	Bearing Protection	Bearing Part Number	Style	Features	Roller Part Number	
								Pin	D-End
Mild Steel	1-7/16" Dia.	ABEC	Press Fit	Sealed and Shielded	45082-GP	1	N/A	N/A	45083
	80A20 Spkts				45084				
	1-1/2" Hex				45081-GP		N/A	45086	
	1-11/16" Dia.				45080-GP		80A20 Spkts	N/A	45087
									45088

5" OD x 3/4" Wall

Mild Steel	1-7/16" Dia.	ABEC	Press Fit	Sealed and Shielded	24864 (GP)	1	N/A	N/A	24876
	80A20 Spkts				38784				
	1-1/2" Hex				27953 (GP)		N/A	28557	N/A
	1-11/16" Dia.				26838 (GP)		80A20 Spkts	N/A	26837
									41889

STYLE ONE



Load Capacity

BEARINGS	(BF) Between Frame																							
	6	12	18	24	30	36	42	48	54	60	66	72	78	84	90	96	102	108	114	120	126	132	138	144
45082-GP	7994	7988	7982	7975	7969	7963	7956	7950	7557	6696	5980	5369	4839	4370	3948	3565	3211	2882	2571	2277	1995	1724	1460	1204
45081-GP	10186	10179	10173	10167	10160	10154	10148	9511	8431	7567	6861	6272	5774	5346	4975	4650	4362	4106	3831	3437	3097	2802	2543	2316
45080-GP	10186	10179	10173	10167	10160	10154	10148	9672	8558	7670	6945	6343	5834	5398	5021	4690	4398	4138	3905	3508	3159	2855	2591	2358
24864	7986	7969	7952	7935	7918	7901	7884	7867	7468	6597	5870	5249	4707	4227	3795	3401	3037	2697	2376	2071	1778	1496	1222	955
27953	10176	10159	10142	10125	10108	10091	10074	10057	10040	10023	10006	9526	8608	7798	7074	6417	5815	5256	4733	4239	3769	3319	2884	2462
26838	10176	10159	10142	10125	10108	10091	10074	10057	10040	10023	9762	8792	7954	7218	6562	5971	5430	4931	4466	4028	3613	3218	2838	2471

STRAIGHT Roller

5-9/16" OD x 3/4" Wall
 6" OD x 3/8" Wall
 6" OD x 3/4" Wall

Standard Specifications

5-9/16" OD x 3/4" Wall

Tube Material	Axle Size	Bearing Grade	Bearing Assembly	Bearing Protection	Bearing Part Number	Style	Features	Roller Part Number	
								Pin	D-End
Mild Steel	1-1/2" Hex	ABEC	Press Fit	Sealed and Shielded	27958 (GP)	1	N/A	28558	N/A
	1-11/16" Dia.				27959 (GP)			N/A	28559

6" OD x 3/8" Wall

Mild Steel	1-15/16" Dia.	ABEC	Press Fit	Sealed and Shielded	45067-GP	1	N/A	N/A	45069
	2-7/16" Dia.				45068-GP				45070

6" OD x 3/4" Wall

Mild Steel	1-15/16" Dia.	ABEC	Press Fit	Sealed and Shielded	27960 (GP)	1	N/A	N/A	28561
	2-7/16" Dia.				27962 (GP)				28562
	2-15/16" Dia.				102203-GP				2

STYLE ONE



STYLE TWO



Load Capacity

BEARINGS	(BF) Between Frame																							
	6	12	18	24	30	36	42	48	54	60	66	72	78	84	90	96	102	108	114	120	126	132	138	144
27958	10174	10155	10136	10116	10097	10078	10058	10039	10020	10001	9981	9497	8576	7764	7037	6378	5774	5213	4688	4192	3719	3267	2830	2406
27959	10174	10155	10136	10116	10097	10078	10058	10039	10020	10001	9735	8762	7922	7184	6526	5932	5389	4888	4421	3981	3564	3166	2784	2414
45067-GP	10919	10908	10897	10885	10874	10863	10851	10840	10829	10818	10806	10795	10784	10772	10491	9802	9195	8654	7961	7316	6710	6137	5592	5071
45068-GP	16328	16317	16305	16294	16283	16272	16260	16249	16238	16141	14606	13333	12258	11340	10545	9850	9237	8692	8204	7765	7367	7005	6664	6076
27960	10912	10891	10870	10849	10828	10807	10786	10765	10744	10723	10702	10681	10660	10639	10618	10076	9246	8486	7784	7129	6513	5931	5376	4844
27962	16321	16300	16279	16258	16237	16216	16195	16174	16153	16132	16111	16090	16069	16048	16027	16006	15219	14317	13509	12781	12121	11521	10954	9981
102203-GP	54068	54047	54026	54005	53984	45929	38968	33825	29869	26729	24176	22057	20271	18744	17423	16268	15249	14343	13533	12803	12141	11539	10988	10023

6-1/2" OD x 1" Wall 8" OD x 1" Wall

STRAIGHT Roller

Standard Specifications

6-1/2" OD x 1" Wall

Tube Material	Axle Size	Bearing Grade	Bearing Assembly	Bearing Protection	Bearing Part Number	Style	Features	Roller Part Number	
								Pin	D-End
Mild Steel	2-7/16" Dia.	ABEC	Press Fit	Sealed and Shielded	27962 (GP)	1	N/A	N/A	28564
	2-15/16" Dia.				102203-GP	2			28565

8" OD x 1" Wall

Tube Material	Axle Size	Bearing Grade	Bearing Assembly	Bearing Protection	Bearing Part Number	Style	Features	Pin	D-End
3-7/16" Dia.	102204-GP	2	28571						

STYLE ONE



STYLE TWO



Load Capacity

BEARINGS	(BF) Between Frame																							
	6	12	18	24	30	36	42	48	54	60	66	72	78	84	90	96	102	108	114	120	126	132	138	144
27962	16316	16287	16257	16228	16198	16169	16140	16110	16081	16052	16022	15993	15963	15934	15905	15875	15849	15817	15787	15758	15153	14078	13067	12111
102203-GP	54063	54033	54004	53975	53945	53916	53887	48466	42798	38300	34643	31609	29051	26864	24972	23318	21859	20562	19402	18356	17410	16547	15759	15035
27965		20502	20465	20427	20390	20352	20315	20278	20240	20203	20166	20128	20091	20053	20016	19979	19941	19904	19866	19829	19792	19754	19717	19680
102204-GP		78334	78230	78101	77948	77770	77568	77341	71342	63827	57725	52670	48412	44776	41634	38889	36472	34325	32405	30677	29114	27692	26393	25200



TAPERED ROLLERS

1-1/2" OD to 1" OD x 18 Ga

TAPERED Roller

Standard Specifications

1-1/2" OD to 1" OD x 18 Ga Tapered

Tube Material	Axle Size	Bearing Grade	Bearing Assembly	Bearing Protection	Bearing Part Number	Style	Features	Roller Part Number		
								Pin	D-End	
Mild Steel	1/4" Dia.	Unground	Open	102245-O	115934-O	1	N/A	45265	N/A	
					102152-O		102175-O	3 Grooves		45267
	5/16" Hex			102245-O	115934-O		N/A	28743	28744	
				102152-O	102175-O		3 Grooves	29836	29837	
Zinc Plated	1/4" Dia.	Unground	Open	102245-O	115934-O	1	N/A	45264	N/A	
					102152-O		102175-O	3 Grooves		45266
	5/16" Hex			102245-O	115934-O		N/A	40342		N/A
				102152-O	102175-O		3 Grooves	40343		

STYLE ONE



Load Capacity

BEARINGS	(BF) Between Frame																		
	10	11	12	13	14	15	16	17	18	19	20	21	22	23	24	25	26	27	28
102245-O / 115934-O	79	71	64	58	53	49	45	42	39	36	33	31	29	27	25	23	22	20	19
Flat Length	1	2	3	5/8	1-5/8	2-5/8	3-5/8	1-3/8	2-3/8	3-3/8	1	2	3	4	1/2	1-1/2	2-1/2	3-1/2	4-1/2
102152-O / 102175-O	100	100	100	100	100	100	100	100	100	100	100	100	98	92	88	83	79	75	71
Flat Length	1	2	3	5/8	1-5/8	2-5/8	3-5/8	1-3/8	2-3/8	3-3/8	1	2	3	4	1/2	1-1/2	2-1/2	3-1/2	4-1/2

TAPERED Roller

2-1/2" OD to
1-11/16" OD x 14 Ga

Standard Specifications

2-1/2" OD to 1-11/16" OD x 14 Ga Tapered

Tube Material	Axle Size	Bearing Grade	Bearing Assembly	Bearing Protection	Bearing Part Number	Style	Features	Roller Part Number	
								Pin	D-End
Mild Steel	7/16" Hex	Unground	Open	102052-O	102309	1	N/A	28697	28698
			Sealed	102053-GP	102310		3 Grooves	28108	28107
							40A22 Sprockets	38450	38448
		ABEC	Shielded	114235-GP	114203-GP	2	50A17 Sprockets	38449	38447
							N/A	43177	43178
			Sealed and Shielded	114092-GP	114091-GP		40A22 Sprockets	43198	43199
Zinc Plated	7/16" Hex	Unground	Sealed	102053-GP	102310	1	N/A	41817	N/A
							3 Grooves	41815	
		ABEC	Shielded	114235-GP	114203-GP	2	N/A	43181	43182
							2 Grooves	43190	43191
							3 Grooves	43186	43187

STYLE ONE



STYLE TWO



Load Capacity

BEARINGS	(BF) Between Frame													
	13	15	17	19	21	23	25	27	29	31	33	35	37	39
102052-O / 102309 102053-GP / 102310	288	287	287	287	286	286	286	285	285	265	245	227	210	195
Flat Length	2-11/16	1/2	2-1/2	4-1/2	7/8	2-7/8	4-7/8	1-5/8	3-5/8	5-5/8	2-5/32	4-5/32	6-5/32	8-5/32
114235-GP / 114203-GP	438		375	331	296	267	242	221	203	187	172	159	147	136
Flat Length	2-15/32	3/4	2-9/32	4-9/32	21/32	2-21/32	4-21/32	1-13/32	3-13/32	5-13/32	1-15/16	3-15/16	5-15/16	7-15/16
114092-GP / 114091-GP	308		227	199		159	144		119	109	99	91	83	76
Flat Length	2-13/16		2-5/8	4-5/8		3	5		3-3/4	5-3/4	2-9/32	4-9/32	6-9/32	8-9/32

STAINLESS STEEL AND PVC ROLLERS

1" OD 16 Ga
 1" Sch Pipe (1.315" OD)
 1-3/8" OD 16 Ga

STAINLESS STEEL and PVC Roller

Standard Specifications

1" OD x 16 Ga

Tube Material	Axle Size	Bearing Material	Bearing Grade	Bearing Assembly	Bearing Protection	Bearing Part Number	Style	Features	Roller Part Number	
									Spring	Pin
Stainless Steel	1/4" Dia. Mild Steel	Zinc Plated	Unground	Press Fit	Open	102245-O	1	N/A	45289	N/A
	5/16" Hex Mild Steel					102152-O			45290	N/A

1" SCH Pipe (1.315" OD)

SCH 40 PVC	5/16" Hex Stainless Steel	Plastic	Plastic	Press Fit	Open	114625	2	N/A	43460	43459
------------	---------------------------	---------	---------	-----------	------	--------	---	-----	-------	-------

1-3/8" OD x 16 Ga

Stainless Steel	5/16" Hex Stainless Steel	Stainless Steel	Semi-Precision	Press Fit	Sealed and Shielded	113141-O	3	N/A	42007	42008
-----------------	---------------------------	-----------------	----------------	-----------	---------------------	----------	---	-----	-------	-------

STYLE ONE



STYLE TWO



STYLE THREE



Load Capacity

BEARINGS	(BF) Between Frame											
	6	9	12	15	18	21	24	27	30	33	36	39
102245-O	60	60	59	59	59	56	47	40	34	28	23	18
102152-O	60	60	59	59	59	59	59	59	58	58	58	58
114625	80	80	68	54	44	37	30	23	18	15	12	10
114131-O	182	181	171	133	108	90	76	65	55	47	40	33

STAINLESS STEEL and PVC Roller

1.9" OD x 16 Ga

Standard Specifications

1.9" OD x 16 Ga

Tube Material	Axle Size	Bearing Material	Bearing Grade	Bearing Assembly	Bearing Protection	Bearing Part Number	Style	Features	Roller Part Number		
									Spring	Pin	
Stainless Steel	7/16" Hex Stainless Steel	Plastic	Plastic	Press Fit	Open	115178	1	N/A	44509	44510	
		Zinc Plated	Unground	Crimped		115902-GP			2	44476	44477
		Stainless Steel			115971-O	3	45269			45271	
					ABEC		115971-GP		45273	45274	
											114210-GP

STYLE ONE



STYLE TWO



STYLE THREE



Load Capacity

BEARINGS	(BF) Between Frame											
	6	12	18	24	30	36	42	48	54	60	66	72
115178	137	137	136	136	135	134	134	133	132	110	75	42
115902-GP	259	259	258	257	257	256	233	186	145	109	74	42
115971-O 115971-GP	279	279	278	277	277	264	211	169	132	98	67	37
114210-GP	376	373	369	269	207	164	131	103	80	59	39	20

1.9" OD x 11 Ga

STAINLESS STEEL and PVC Roller

Standard Specifications

1.9" OD x 11 Ga

Tube Material	Axle Size	Bearing Material	Grade	Assembly	Protection	Bearing Part Number	Style	Features	Spring	Pin
Stainless Steel	7/16" Hex Mild Steel	Zinc Plated Mild Steel	Unground	Press Fit	Labyrinth Shield	102051-O	1		28781	28782
						102155-GP				45272
	7/16" Hex Stainless Steel	Stainless Steel	Semi-Precision	Sealed and Shielded	110244-GP	2	40A18 Sprockets	44995	44994	
								50A15 Sprockets	44997	44996
								60A13 Sprockets	44999	44998
	ABEC	Crimped	Sealed	114210-GP	3			42269	42268	
								45188		



Load Capacity

BEARINGS	(BF) Between Frame											
	6	12	18	24	30	36	42	48	54	60	66	72
102051-O	299	298	297	296	293	232	186	148	115	85	58	32
102155-GP	566	518	332	239	182	141	109	83	59	38		
110244-GP	283	282	281	280	214	166	129	97	69	43	18	
114210-GP	376	372	368	267	205	161	127	99	76	54	34	

STAINLESS STEEL and PVC Roller

1-1/2" Sch Pipe
(1.9" OD)

Standard Specifications

1-1/2" PVC Pipe (1.9" OD)

Tube Material	Axle Size	Bearing Grade	Bearing Assembly	Bearing Protection	Bearing Part Number	Style	Features	Roller Part Number	
								Spring	Pin
SCH 40 PVC (White, Unlettered)	1/4" Dia. Stainless Steel	Plastic	Press Fit	Open	114275	1	N/A	45099	N/A
	7/16" Hex Stainless Steel				114624	2		43462	43461
SCH 80 PVC (Grey, Lettered)	7/16" Hex Mild Steel	Unground	Press Fit	Open	102051-O	3	N/A	28783	28784
								44546	44547

STYLE ONE



STYLE TWO



STYLE THREE



Load Capacity

TUBE	BEARINGS	(BF) Between Frame									
		6	12	18	24	30	36	42	48	54	60
SCH 40 PVC	115275	80	80	54	38	27	18	11			
	114624	80	80	79	79	63	44	32	23	18	14
SCH 80 PVC	102051	300	163	107	79	62	44	31	23	17	13
		300	206	135	100	79	55	39	29	22	17

2-1/2" OD x 11 Ga

STAINLESS STEEL and PVC Roller

Standard Specifications

2-1/2" OD x 11 Ga

Tube Material	Axle Size	Bearing Material	Bearing Grade	Bearing Assembly	Bearing Protection	Bearing Part Number	Style	Features	Roller Part Number	
									Spring	Pin
Stainless Steel	7/16" Hex Stainless Steel	Stainless Steel	ABEC	Crimped	Sealed	114238-GP	1	N/A	42415	42414
									Zinc Plated	Unground
		11/16" Hex Mild Steel	Mild Steel	Semi-Precision	Press Fit	Sealed and Shielded	112896-GP		3	40A22 Sprockets
	50A17 Sprockets							40514		40513
	60A15 Sprockets							40516		40515
	N/A							45268		45270
		44889	44888							
		40A22 Sprockets	44891	44890						
	11/16" Hex Stainless Steel	Stainless Steel	Unground	Semi-Precision	Sealed	115970-GP	4	N/A	44889	44888
									Sealed and Shielded	114416-GP
60A15 Sprockets			44895	44894						
ABEC			Crimped	Sealed	114237-GP	1	N/A	42413	42412	



Load Capacity

	(BF) Between Frame																	
	6	12	18	24	30	36	42	48	54	60	66	72	78	84	90	96	102	108
114238-GP	330	327	323	235	178	139	109	84	62	42	24							
102054-GP	649	647	646	644	642	641	639	638	636	635	633	544	459	385	294	207	122	37
112896-GP	1349	1344	1300	946	736	594	490	408	340	282	231	183	139	97	56			
115970-GP	849	847	846	844	843	812	674	568	480	406	341	282	228	177	128	80	34	
114416-GP	699	697	696	694	692	691	612	510	425	351	285	225	168	114	61			
114237-GP	599	597	596	594	593	591	590	588	563	477	401	333	270	211	154	99	45	

SPROCKETED ROLLERS

1.9" OD x 9 Ga

SPROCKETED Roller

Standard Specifications

1.9" OD x 9 Ga

Tube Material	Axle Size	Bearing Grade	Bearing Assembly	Bearing Protection	Bearing Part Number	Style	Features	Spring	Pin	
Mild Steel	7/16" Hex	Unground	Press Fit	Labyrinth Shield	102051-GP	1	40A18 Spkts	38209	38208	
							50A15 Spkts	38211	38210	
							60A13 Spkts	38732	38733	
Galvanized Flo-Coat		Semi-Precision		Unground	Labyrinth Shield	102051-GP	1	40A18 Spkts	44912	44911
								50A15 Spkts	44914	44913
								60A13 Spkts	44916	44915
Galvanized Flo-Coat	Semi-Precision	Unground	Sealed and Shielded	102155-GP	2	40A18 Spkts	39749	39748		
						50A15 Spkts	39751	39750		
						60A13 Spkts	39753	39752		

STYLE ONE



STYLE TWO



Load Capacity

BEARINGS	(BF) Between Frame												
	6	12	18	24	30	36	42	48	54	60	63	66	72
102051-GP	299	297	296	295	292	231	184	146	113	83	69	55	29
102155-GP	565	518	331	238	181	140	108	81	57	35	25		

SPROCKETED Roller

1.9" OD x 9 Ga

Standard Specifications

1.9" OD x 9 Ga

Tube Material	Axle Size	Bearing Grade	Bearing Assembly	Bearing Protection	Bearing Part Number	Style	Features	Spring	Pin	D-End
Mild Steel	7/16" Hex	ABEC	Crimped	Shielded	114135-GP	1	40A18 Spkts	42570	42571	N/A
							50A15 Spkts	42574	42575	
							60A13 Spkts	42578	42579	
			Sealed	114209-GP	40A18 Spkts	42572	42573			
					50A15 Spkts	42576	42577			
					60A13 Spkts	42580	42581			
	Press Fit	Sealed and Shielded	114621-GP	2	40A18 Spkts	43507	43508			
					50A15 Spkts	43509	43510			
					60A13 Spkts	43511	43512			
3/4" Dia.	Press Fit	Sealed	102186-GP	3	40A18 Spkts	N/A	N/A	39757		
					50A15 Spkts			39758		
					60A13 Spkts			39759		
Galvanized Flo-Coat	7/16" Hex			Sealed and Shielded	114621-GP	2	40A18 Spkts	44918	44917	N/A
							50A15 Spkts	44920	44919	
							60A13 Spkts	44922	44921	

STYLE ONE



STYLE TWO



STYLE THREE



Load Capacity

BEARINGS	(BF) Between Frame														
	6	12	18	24	30	36	42	48	54	60	63	66	72	78	84
114135-GP 114209-GP	500	497	396	286	219	173	137	107	82	59	49	38			
114621-GP	681	616	396	286	217	168	130	98	70	44	32				
102187-GP	700	700	700	700	700	700	616	514	429	355	322	290	230	174	120

2" OD x 7 Ga

SPROCKETED Roller

Standard Specifications

2" OD x 7 Ga

Tube Material	Axle Size	Bearing Grade	Bearing Assembly	Bearing Protection	Bearing Part Number	Style	Features	Spring	Pin
Mild Steel	7/16" Hex	ABEC	Press Fit	Sealed and Shielded	114621-GP	1	40A18 Spkts	43513	43514
	11/16" Hex				102191-GP		2	50A15 Spkts	43515
	7/16" Hex	ABEC	Press Fit	Sealed and Shielded	114621-GP	1	40A18 Spkts	37821	37820
							50A15 Spkts	37823	37822

STYLE ONE



STYLE TWO



Load Capacity

BEARINGS	(BF) Between Frame														
	6	12	18	24	30	36	42	48	54	60	63	66	72	78	84
114621-GP	680	615	395	284	215	166	128	96	67	41					
102191-GP	700	700	700	700	700	700	700	700	596	492	444	398	311	229	151

SPROCKETED Roller

2-1/2" OD x 11 Ga

Standard Specifications

2-1/2" OD x 11 Ga

Tube Material	Axle Size	Bearing Grade	Bearing Assembly	Bearing Protection	Bearing Part Number	Style	Features	Spring	Pin
Mild Steel	11/16" Hex	Unground	Press Fit	Shot Guard	45404-GP	1	40A21 Spkts	N/A	43406
							40A22 Spkts		43407
							50A17 Spkts		43408
							60A15 Spkts		43409
				Sealed	102041-GP	2	40A20 Spkts	45123	45122
							40A21 Spkts	43626	43625
							40A22 Spkts	38735	38734
							50A17 Spkts	37614	27285
		60A15 Spkts	37615				27284		
		Semi-Precision	102139-GP				3	40A20 Spkts	45125
				40A21 Spkts	43628	43627			
				40A22 Spkts	42058	42057			
				50A17 Spkts	37617	29131			
				60A15 Spkts	37616	29130			
Galvanized Flo-Coat	11/16" Hex			ABEC	Press Fit	Sealed and Shielded		114128-GP	3
		40A21 Spkts	43370				43369		
		40A22 Spkts	42038				42037		
		50A17 Spkts	42040				42039		
		60A15 Spkts	42042				42041		
		40A21 Spkts	44924				44923		
		40A22 Spkts	44926				44925		
		50A17 Spkts	44928				44927		
		60A15 Spkts	44930				44929		
		40A21 Spkts	44932				44931		
		40A22 Spkts	44934				44933		
		50A17 Spkts	44936				44935		
		60A15 Spkts	44938				44937		

STYLE ONE



STYLE TWO



STYLE THREE



Load Capacity

BEARINGS	(BF) Between Frame																	
	6	12	18	24	30	36	42	48	54	60	66	72	78	84	90	96	102	108
45404-GP	700	700	700	700	700	700	678	572	485	412	347	290	237	187	139	93		
102041-GP	700	700	700	700	700	700	700	612	520	441	373	311	255	201	151	102	54	
102139-GP	700	700	700	700	700	700	700	700	700	593	489	394	305	220	137	56		
114128-GP	700	700	700	700	700	700	700	700	700	593	489	393	304	219	137			

2-9/16" OD x 7 Ga

SPROCKETED Roller

Standard Specifications

2-9/16" OD x 7 Ga

Tube Material	Axle Size	Bearing Grade	Bearing Assembly	Bearing Protection	Bearing Part Number	Style	Features	Spring	Pin
Mild Steel	11/16" Hex	Unground	Press Fit	Shot Guard	45404-GP	1	40A21 Spkts	N/A	43410
							40A22 Spkts		43411
							50A17 Spkts		43412
							60A15 Spkts		43413
				Sealed	102041-GP	2	40A21 Spkts	44909	45012
							40A22 Spkts	38737	38736
							50A18 Spkts	37619	27287
							60A15 Spkts	37618	27286
		Semi-Precision	Press Fit	Sealed and Shielded	114128-GP	3	80A13 Spkts	38738	38739
							40A22 Spkts	42060	42059
							50A18 Spkts	38728	38730
							60A15 Spkts	38729	38731
							40A21 Spkts	43374	43373
							40A22 Spkts	42044	42043
							50A18 Spkts	42046	42045
							60A15 Spkts	42048	42047
80A13 Spkts	44910	45013							

STYLE ONE



STYLE TWO



STYLE THREE



Load Capacity

BEARINGS	(BF) Between Frame																
	6	12	18	24	30	36	42	48	54	60	66	72	78	84	90	96	102
45404-GP	847	845	843	840	838	811	673	566	478	404	339	281	227	176	128		
102041-GP	848	846	844	841	839	837	721	606	513	434	365	302	245	191	139	89	41
102139-GP	2224	2222	2219	1910	1496	1214	1005	840	703	586	481	385	295	209	126		
114128-GP	2799	2790	2595	1910	1496	1214	1005	840	703	586	481	385	295	209	126		

SPROCKETED Roller

3-1/2" OD x 7 Ga

Standard Specifications

3-1/2" OD x 7 Ga

Tube Material	Axle Size	Bearing Grade	Bearing Assembly	Bearing Protection	Bearing Part Number	Style	Features	Pin
Mild Steel	1-1/16" Hex	Unground	Press Fit	Sealed	45053-GP	1	60A20 Spkts	45056
							80A16 Spkts	45057
							100A13 Spkts	45058
		Semi-Precision		Sealed and Shielded	45054-GP	2	60A20 Spkts	45075
							80A16 Spkts	45074
							60A20 Spkts	45060
		ABEC	80A16 Spkts	45061				
			60A20 Spkts	45062				
			100A13 Spkts	45062				

STYLE ONE



STYLE TWO



Load Capacity

BEARINGS	(BF) Between Frame																							
	6	12	18	24	30	36	42	48	54	60	66	72	78	84	90	96	102	108	114	120	126	132	138	144
45053-GP	1203	1200	1197	1194	1190	1187	1184	1181	1178	1174	1171	1168	1165	1162	1158	1155	1152	1027	912	771	600	432	267	104
45077-GP	4127	4124	4121	4118	4114	3418	2875	2462	2132	1860	1629	1427	1246	1081	929	786	650	519	392	268	146			
45054-GP	4791	4780	4764	4742	4134	3385	2847	2437	2111	1841	1612	1412	1233	1070	919	777	642	513	387	264				

3-1/2" OD x .300 Wall

SPROCKETED Roller

Standard Specifications

3-1/2" OD x .300" Wall

Tube Material	Axle Size	Bearing Grade	Bearing Assembly	Bearing Protection	Bearing Part Number	Style	Features	Pin	D-End	
Mild Steel	1-1/16" Hex	Unground	Press Fit	Sealed	102061-GP	1	60A20 Spkts	31285	N/A	
							80A16 Spkts	38740		
		Semi-Precision			102101-GP	2	60A20 Spkts	30085		
							80A16 Spkts	39050		
		ABEC			114249-GP		60A20 Spkts	43363		
							80A16 Spkts	43364		
	1-1/8" Hex			100A13 Spkts	43365					
		27949		3	60A20 Spkts	40747				
					80A16 Spkts	40749				
	1-3/16" Dia.	Unground		Sealed	102197-GP	1	60A20 Spkts	N/A		39258
							80A16 Spkts			39259
	1-7/16" Dia.	ABEC		Sealed and Shielded	24862	3	60A20 Spkts			39261
80A16 Spkts			39262							

STYLE ONE



STYLE TWO



STYLE THREE



Load Capacity

BEARINGS	(BF) Between Frame																							
	6	12	18	24	30	36	42	48	54	60	66	72	78	84	90	96	102	108	114	120	126	132	138	144
102061-GP	1201	1196	1191	1186	1181	1176	1171	1165	1160	1155	1150	1145	1140	1135	1130	1124	1119	1093	910	733	560	391		
102101-GP	4126	4120	4115	4110	4105	3408	2863	2448	2117	1843	1609	1405	1222	1056	902	757	619	486	357	231				
114249-GP	4791	4777	4759	4736	4125	3374	2834	2423	2095	1823	1592	1389	1209	1044	891	747	611	479	351	227				
27949	6985	6968	6945	6915	6878	6726	5741	5004	4432	3909	3466	3084	2748	2447	2172	1919	1682	1457	1243	1036	836	635		
102197-GP	2496	2491	2485	2480	2475	2470	2465	2460	2455	2450	2444	2439	2263	2013	1785	1575	1378	1192	1015	844	678	516	356	
24862	7995	7990	7985	7980	7975	6823	5812	5058	4475	4009	3628	3311	3043	2682	2316	2016	1767	1559	1382	1231	1100	986	887	799

SPROCKETED Roller

4" OD x 1/4" Wall

4" OD x 1/2" Wall

Standard Specifications

4" OD x 1/4" Wall

Tube Material	Axle Size	Bearing Grade	Bearing Assembly	Bearing Protection	Bearing Part Number	Style	Features	D-End
Mild Steel	1-7/16" Dia.	ABEC	Press Fit	Sealed and Shielded	24864	1	60A22 Spkts	45107
							80A17 Spkts	45108

4" OD x 1/2" Wall

Mild Steel	1-7/16" Dia.	ABEC	Press Fit	Sealed and Shielded	24862	1	60A22 Spkts	38781
							80A17 Spkts	38782

STYLE ONE



Load Capacity

BEARINGS	(BF) Between Frame																							
	6	12	18	24	30	36	42	48	54	60	66	72	78	84	90	96	102	108	114	120	126	132	138	144
45053-GP	7995	7990	7985	7980	7975	7970	6808	5926	5243	4699	4254	3884	3571	3303	3070	2727	2396	2119	1884	1683	1510	1360	1228	1112
45077-GP	7992	7983	7973	7964	7955	7945	7936	7927	7536	6672	5953	5340	4806	4334	3910	3523	3166	2834	2521	2223	1939	1664	1398	1101

5" OD x 1/4" Wall
 5" OD x 3/4" Wall

SPROCKETED Roller

Standard Specifications

5" OD x 1/4" Wall

Tube Material	Axle Size	Bearing Grade	Bearing Assembly	Bearing Protection	Bearing Part Number	Style	Features	D-End
Mild Steel	1-7/16" Dia.	ABEC	Press Fit	Sealed and Shielded	45082-GP	1	80A20 Spkts	45084
	1-11/16" Dia.				45080-GP		80A20 Spkts	45088

5" OD x 3/4" Wall

Tube Material	Axle Size	Bearing Grade	Bearing Assembly	Bearing Protection	Bearing Part Number	Style	Features	D-End
Mild Steel	1-7/16" Dia.	ABEC	Press Fit	Sealed and Shielded	24864	1	80A20 Spkts	38784
	1-11/16" Dia.				26838		80A20 Spkts	41889

STYLE ONE



Load Capacity

BEARINGS	(BF) Between Frame																							
	6	12	18	24	30	36	42	48	54	60	66	72	78	84	90	96	102	108	114	120	126	132	138	144
45082-GP	7994	7988	7982	7975	7969	7963	7956	7950	7557	6696	5980	5369	4839	4370	3948	3565	3211	2882	2571	2277	1995	1724	1460	1204
45080-GP	10186	10179	10173	10167	10160	10154	10148	9672	8558	7670	6945	6343	5834	5398	5021	4690	4398	4138	3905	3508	3159	2855	2591	2358
24864	7986	7969	7952	7935	7918	7901	7884	7867	7468	6597	5870	5249	4707	4227	3795	3401	3037	2697	2376	2071	1778	1496	1222	955
26838	10176	10159	10142	10125	10108	10091	10074	10057	10040	10023	9762	8792	7954	7218	6562	5971	5430	4931	4466	4028	3613	3218	2838	2471

GROOVED ROLLERS

Standard Specifications

1-3/8" OD x 18 Ga

Tube Material	Axle Size	Bearing Grade	Bearing Assembly	Bearing Protection	Bearing Part Number	Style	Features	Spring	Pin
Galvanized Flo-Coat	5/16" Hex	Unground	Crimped	Open	102228-GP	1	1 Groove	28122	29190
							2 Grooves	28123	29191
		ABEC		Shielded	114231-GP	2	1 Groove	42375	42377
							2 Grooves	42376	42378

STYLE ONE



STYLE TWO



Load Capacity

BEARINGS	(BF) Between Frame											
	6	9	12	15	18	21	24	27	30	33	36	39
102228-GP	120	119	119	119	119	119	107	92	80	70	61	53
114231-GP	295	294	252	198	162	136	117	101	88	77	67	58

GROOVED Roller

1-3/8" OD x 16 Ga

Standard Specifications

1-3/8" OD x 16 Ga

Tube Material	Axle Size	Bearing Grade	Bearing Assembly	Bearing Protection	Bearing Part Number	Style	Features	Spring	Pin	
Mild Steel	5/16" Hex	Unground	Crimped	Open	102228-GP	1	1 Groove	29192	29194	
				Shielded	114231-GP	3	2 Grooves	29193	29195	
ABEC		Press Fit	Sealed and Shielded	102274-GP	2	1 Groove	42355	42353		
						2 Grooves	42356	42354		
Galvanized Flo-Coat		5/16" Hex	Semi-Precision	Crimped	Shielded	114231-GP	3	1 Groove	38573	N/A
								2 Grooves	38572	
	ABEC		Press Fit	Sealed and Shielded	102274-GP	2	1 Groove	42389	42391	
							2 Grooves	42390	42392	

STYLE ONE



STYLE TWO



STYLE THREE



Load Capacity

BEARINGS	(BF) Between Frame											
	6	9	12	15	18	21	24	27	30	33	36	39
102228-GP	120	119	119	119	119	118	106	92	80	69	60	52
102274-GP	288	251	184	144	117	98	83	71	61	52	44	37
114231-GP	295	294	252	198	162	136	116	100	87	76	66	57

1-3/8" OD x 3/16" Wall

GROOVED Roller

Standard Specifications

1-3/8" OD x 3/16" Wall

Tube Material	Axle Size	Bearing Grade	Bearing Assembly	Bearing Protection	Bearing Part Number	Style	Features	Spring	Pin
Mild Steel	5/16" Hex	Unground	Press Fit	Sealed	102046-GP	1	1 Groove	29196	29198
				2 Grooves		29197	29199		
		Semi-Precision		Sealed and Shielded	113365-GP	2	1 Groove	43766	N/A
				2 Grooves		43767			
		ABEC	Crimped	Shielded	114231-GP	3	1 Groove	42403	42405
							2 Grooves	42404	42406

STYLE ONE



STYLE TWO



STYLE THREE



Load Capacity

BEARINGS	(BF) Between Frame														
	6	9	12	15	18	21	24	27	30	33	36	39	42	45	48
102046-GP	149	148	148	147	138	115	98	83	72	61	52	44	37	30	23
113365	287	249	182	142	115	95	80	67	57	48	40	32	25	19	12
114231-GP	294	293	250	196	160	134	113	97	84	72	62	53	44	36	29

GROOVED Roller

1-7/8" OD x 13" Ga

Standard Specifications

1-7/8" OD x 13 Ga

Tube Material	Axle Size	Bearing Grade	Bearing Assembly	Bearing Protection	Bearing Part Number	Style	Features	Spring	Pin
Mild Steel	7/16" Hex	Unground	Crimped	Open	115899-GP	1	1 Groove	37345	37347
				Shielded	114135-GP		2 Grooves	37346	37348
		ABEC		Sealed	114209-GP	2	1 Groove	42259	42258
							2 Grooves	42264	42263
		Press Fit	Sealed and Shielded	114621-GP	4	1 Groove	43519	43518	
						2 Grooves	43521	43520	

STYLE ONE



STYLE TWO



STYLE THREE



Load Capacity

BEARINGS	(BF) Between Frame																							
	6	9	12	15	18	21	24	27	30	33	36	39	42	45	48	51	54	57	60	63	66	69	72	75
115899-GP	269	269	268	268	267	267	266	266	266	265	265	264	251	225	201	179	158	138	120	101	84	67	50	33
114135-GP 114209-GP	501	499	498	485	397	335	288	251	222	197	175	157	140	125	111	98	86	75	64	53	43	33	23	
114621-GP	681	680	618	485	398	335	288	250	220	194	171	152	134	117	102	88	75	62	49	37				

1.9" OD x 16 Ga

GROOVED Roller

Standard Specifications

1.9" OD x 16 Ga

Tube Material	Axle Size	Bearing Grade	Bearing Assembly	Bearing Protection	Bearing Part Number	Style	Features	Spring	Pin			
Mild Steel	7/16" Hex	Unground	Crimped	Open	115899-GP	1	1 Groove	28105	37343			
							2 Grooves	28106	37344			
Galvanized						ABEC	Shielded	114135-GP	2	1 Groove	37824	N/A
										2 Grooves	37825	
Galvanized Flo-Coat		ABEC		Sealed	114209-GP	2	1 Groove	42075	42073			
							2 Grooves	42076	42074			
Galvanized Flo-Coat		Unground		Open	115899-GP	1	1 Groove	42206	42204			
							2 Grooves	42207	42205			
		ABEC		Shielded	114135-GP	2	1 Groove	45371	N/A			
							2 Grooves	45372				
	Sealed		114209-GP	2	1 Groove	45413						
					2 Grooves	45414						
1 Groove	45417											
2 Grooves	45418											

STYLE ONE

STYLE TWO



Load Capacity

BEARINGS	(BF) Between Frame																							
	6	9	12	15	18	21	24	27	30	33	36	39	42	45	48	51	54	57	60	63	66	69	72	75
115899-GP	269	269	269	268	268	268	267	267	267	267	266	266	253	227	203	181	161	141	122	104	87	70	53	36
114135-GP 114209-GP	501	500	498	485	398	336	289	253	223	198	177	158	142	127	113	100	89	77	67	56	46	36	27	

GROOVED Roller

1.9" OD x 9 Ga

Standard Specifications

1.9" OD x 9 Ga

Tube Material	Axle Size	Bearing Grade	Bearing Assembly	Bearing Protection	Bearing Part Number	Style	Features	Spring	Pin
Mild Steel	7/16" Hex	Unground	Press Fit	Labyrinth Shield	102051-GP	1	1 Groove	37349	37351
				2 Grooves	37350		37352		
		Semi-Precision	Press Fit	Sealed and Shielded	102155-GP	2	1 Groove	39861	39859
				2 Grooves	39862		39860		
		ABEC	Crimped	Shielded	114135-GP	3	1 Groove	42231	42230
					2 Grooves		42239	42238	
				Sealed	114209-GP		1 Groove	42233	42232
					2 Grooves		42241	42240	
		Press Fit	Sealed and Shielded	114621-GP	5	1 Groove	43527	43526	
			2 Grooves	43529		43528			
Galvanized Flo-Coat	7/16" Hex	Unground	Press Fit	Labyrinth Shield	102051-GP	1	1 Groove	44884	39487
				2 Grooves	44474		39488		
		ABEC	Crimped	Shielded	114135-GP	3	1 Groove	42235	42234
					2 Grooves		42243	42242	
				Sealed	114209-GP		1 Groove	42237	42236
					2 Grooves		42245	42244	
		Press Fit	Sealed and Shielded	114621-GP	5	1 Groove	43523	43522	
			2 Grooves	43525		43524			



Load Capacity

BEARINGS	(BF) Between Frame												
	6	12	18	24	30	36	42	48	54	60	63	66	72
102051-GP	299	297	296	295	292	231	184	146	113	83	69	55	29
102155-GP	565	518	331	238	181	140	108	81	57	35	25		
114135-GP 114209-GP	500	497	396	286	219	173	137	107	82	59	49	38	
114621-GP	681	616	396	286	217	168	130	98	70	44	32		

2" OD x 16 Ga

GROOVED Roller

Standard Specifications

2" OD x 16 Ga

Tube Material	Axle Size	Bearing Grade	Bearing Assembly	Bearing Protection	Bearing Part Number	Style	Features	Spring	Pin
Mild Steel	7/16" Hex	Unground	Crimped	Open	115902-GP	1	1 Groove	37353	37355
							2 Grooves	37354	37356

2" OD x 14 Ga

Tube Material	Axle Size	Bearing Grade	Bearing Assembly	Bearing Protection	Bearing Part Number	Bearing Style	Features	Spring	Pin
Mild Steel	7/16" Hex	Unground	Press Fit	Open	102040-GP	2	1 Groove	37357	37359
							2 Grooves	37358	37360



Load Capacity

BEARINGS	(BF) Between Frame											
	6	12	18	24	30	36	42	48	54	60	66	72
115902-GP	259	259	258	257	257	256	252	203	160	122	86	52
102040-GP	379	378	378	340	262	208	166	133	103	77	53	30

GROOVED Roller

2" OD x 7 Ga

Standard Specifications

2" OD x 7 Ga

Tube Material	Axle Size	Bearing Grade	Bearing Assembly	Bearing Protection	Bearing Part Number	Style	Features	Spring	Pin	
Mild Steel	7/16" Hex	ABEC	Crimped	Shielded	114135-GP	1	1 Groove	42281	42280	
				Sealed	114209-GP		2 Grooves	42286	42285	
				Press Fit	Sealed and Shielded	114621-GP	2	1 Groove	42279	42278
								2 Grooves	42284	42283
			1 Groove	43531	43530					
			2 Grooves	43533	43532					



Load Capacity

BEARINGS	(BF) Between Frame												
	6	12	18	24	30	36	42	48	54	60	63	66	72
114135-FP 114209-GP	500	496	395	285	217	170	134	104	79	56	45	34	
114621-GP	680	615	395	284	215	166	128	96	67	41			

Standard Specifications

2-1/2" OD x 11 Ga

Tube Material	Axle Size	Bearing Grade	Bearing Assembly	Bearing Protection	Bearing Part Number	Style	Features	Spring	Pin	
Mild Steel	11/16" Hex	Unground	Press Fit	Open	102054-GP	1	1 Groove	37365	37367	
							2 Grooves	37366	37368	
			Sealed	102041-GP	2	1 Groove	37361	37363		
						2 Grooves	37362	37364		
		ABEC	Crimped	Press Fit	Sealed and Shielded	114196-GP	3	1 Groove	42556	42557
								2 Grooves	42558	42559
			Press Fit	Sealed and Shielded	114128-GP	4	1 Groove	42641	42642	
							2 Grooves	42643	42644	



Load Capacity

BEARINGS	(BF) Between Frame																	
	6	12	18	24	30	36	42	48	54	60	66	72	78	84	90	96	102	108
102054-GP	649	647	646	644	642	641	639	638	636	635	633	579	477	383	292	205	119	35
102041-GP	700	700	700	700	700	700	700	612	520	441	373	311	255	201	151	102	54	
114196-GP	599	597	596	594	593	591	590	588	587	518	439	367	301	239	180	123	68	
114128-GP	700	700	700	700	700	700	700	700	700	593	489	393	304	219	137			

FRAMESAVER ROLLERS

FRAMESAVER Roller

Framesaver Rollers

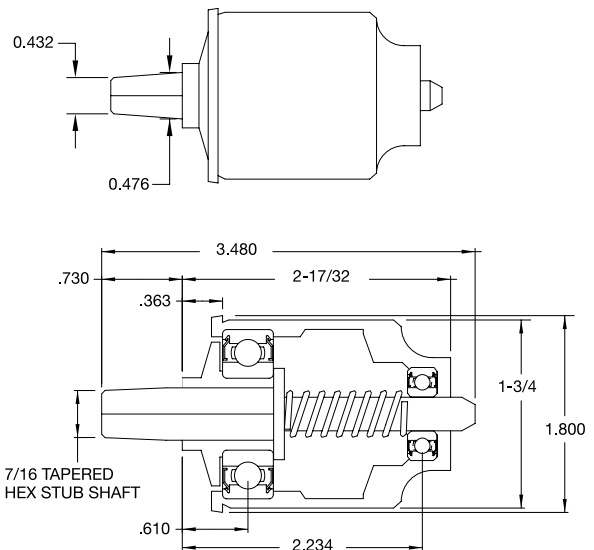
Tube Material	Features	Roller
1-7/8" OD x 13 Ga Mild Steel		42256
	1 Groove	42262
	2 Grooves	42267
1.9" OD x 16 Ga Mild Steel		42208
1.9" OD x 16 Ga Galvanized		42210
	1 Groove	42212
	2 Grooves	42213
1.9" OD x 9 Ga Mild Steel		42226
	1 Groove	42246
	2 Grooves	42247
1.9" OD x 9 Ga Galvanized Flo-Coat		42228
	1 Groove	42248
	2 Grooves	42249
1-1/2" SCH 40 Aluminum Pipe (T6-6061, 1.9" OD)		42291
		42276
2" OD x 7 Ga Mild Steel		42276
	1 Groove	42282
	2 Grooves	42287



Load Capacity

TUBE	(BF) Between Frame														
	12	18	24	30	36	42	48	54	60	63	66	72	78	84	90
1-7/8" OD x 13 Ga	208	207	207	206	205	204	203	202	201	201	200	192	160		
1.9" OD x 16 Ga	209	208	208	207	206	206	205	204	204	192	174	144	120		
1.9" OD x 9 Ga	207	206	205	203	202	201	199	198	197	196	195	194	193	191	169
1-1/2" Pipe (1.9" OD)	209	209	208	208	207	207	206	174	139	125	113	93	78	66	56
2" OD x 7 Ga	207	205	203	202	201	200	198	196	195	193	191	189	188	186	184

Framesaver rollers feature a spring-loaded, 7/16" hex, stub shaft. The hex stub shaft tapers from larger than 7/16" at the base to slightly smaller at the end. The tapered shaft allows for a tight fit into an existing frame mounting slot that might be slightly worn. The tapered shaft, when mounted properly, creates a tight fit and reduces the possibility of bounce and wear of the conveyor frame. Using Framesaver rollers during operation greatly extends the life of the conveyor frame.



POLY-RIBBED ROLLERS

POLY-RIBBED Roller

Poly-Ribbed Rollers

Tube Material	Axle	Bearings	Hub Features	Spring	Pin
1.9 OD x 16 Ga Galvanized Flo-Coat	7/16" Hex	115991-GP & 114135-GP	Plastic Hub	45375	NA
2-1/2" OD x 11 Ga Mild Steel	11/16" Hex	114128-GP	Metal Sheave	45376	45377
		116156 & 115128-GP	Low-Profile Metal Hub	45512	NA



Load Capacity

TUBE	(BF) Between Frame												
	12	18	24	30	36	42	48	54	60	66	72	78	84
1.9" OD x 16 Ga	598	518	378	292	232	187	150	118	89	62	37		
2.5" OD x 11 Ga	700	700	700	700	700	607	504	417	343	276	214	156	100

Poly-Ribbed rollers and belts create greatly enhanced driving force compared to typical grooved rollers with O-ring belts. They are capable of larger loads at higher speeds yet maintain a low profile, quiet operation, and easy maintenance.

Poly-Ribbed Rollers and belts offer a much cleaner and quieter operation with greatly reduced maintenance costs unlike the typical CDLR counter part.

Convert an existing CDLR conveyor into a Poly-Ribbed Roller Driven conveyor with ease using our welded metal sheave manufactured to fit inside existing CDLR chain guards. The larger diameter sheave increases surface contact on the belt, compared to the low-profile hub, for even greater driving force.

OmniMetalcraftcorp.

P.O. Box 352 ■ Alpena, Michigan 49707
Phone 989.358.7000
Fax 989.358.7020
info@omni.com
www.omni.com