



**GRIMME**  
Irrigation Systems

POTATO TECHNOLOGY  
ROOTCROP TECHNOLOGY  
VEGETABLE TECHNOLOGY  
IRRIGATION TECHNOLOGY

**GRIMME**  
Irrigation Systems

# PARTS & SUPPORT

2018 EDITION





# CONTENTS

<b>IVECO Pump Spares &amp; Grimme Reel Spares</b> .....	<b>04</b>
<b>Hook &amp; Latch Systems</b> .....	<b>05</b>
Genuine TVF .....	05
Genuine Raesa .....	07
Galvanised Fittings .....	09
<b>Lever Lock (Bauer Type)</b> .....	<b>11</b>
<b>Manufacturing Components (Steel &amp; Aluminium)</b> .....	<b>12</b>
<b>Layflat Hose</b> .....	<b>13</b>
<b>Accessories</b> .....	<b>15</b>
Know your hooks? .....	16
Storz .....	17
<b>Grimme Irrigation Equipment: Product Information</b> .....	<b>18</b>
Primus Range .....	18
Irrigation Pumpsets .....	21
Fuel Bowser .....	22
Layflat Reeler .....	23
<b>Contact Details: Grimme Irrigation Centres</b> .....	<b>24</b>

## CAN'T FIND WHAT YOU'RE LOOKING FOR?

Our catalogue is designed as a quick reference guide to the world of fittings and associated parts that are commonly used in the agricultural and amenity industries.

Our full range of parts however extends to cover many more aspects of our industry.

Our specialist Irrigation Centres are able to supply **Parts** and **Service** for all popular Irrigation systems, and include the following types of equipment and manufacturers:

**Murphy Engine Control • Caprari Pumping Technology • Malleable Iron Fittings  
Solid Set and PVC Pipe Systems • Irrigation Reel Drive Chains and Bearings  
Komet and Nelson Rain Guns, Sprinkler Systems • Irrigation Reel Turbine Spare Parts.**



## IVECO PUMP-SET ENGINE SPARES

### FUEL FILTER

**IVECO N45** GK900.00166

### ENGINE OIL FILTER

**IVECO N45** GK900.01001

### AIR FILTER

**IVECO N45** GK900.01002

### WATER PUMP BELT

**IVECO N45** GK900.01003

### AIR FILTER INNER

**IVECO N45** GK900.01004

### FUEL LIFT PUMP

**IVECO N45** GK900.01005



## GENUINE CAPRARI PUMP SPARES



### TAPER BORE NOZZLES

**101/140** GK900.00490

**18mm**

**101/140** GK900.00491

**20mm**

**101/140** GK900.00492

**22mm**

**101/140** GK900.00493

**24mm**

**140 26mm** GK900.00494

**140 28mm** GK900.00495

**140 30mm** GK900.00496

**140 32mm** GK900.00497



### PRIMERS & SPARES

**Manual** GK900.00359

**Priming Pump**

**Manual Priming** GK900.00360

**Pump Diaphragm**

**Manual Priming** GK900.00361

**Pump Spindle**

**Exhaust Primer** GK900.00403



### CAPRARI PUMPS

**MEC-MG** GK900.00900

**80-4/3A**

**MEC-MG** GK900.00902

**100HT/2A**

## GENUINE TVF



**REDUCER**

**5" M x 4" F** GK900.00164

---



**ELBOW 90 DEGREE**

**4" M x 4" F** GK900.00722

**5" M x 5" F** GK900.00723

---



**ELBOW 45 DEGREE**

**4" M x 4" F** GK900.00720

**5" M x 5" F** GK900.00721

---



**MALE HOSETAIL**

**4" M x 4"** GK900.00736

**5" M x 4"** GK900.00176

**5" M x 5"** GK900.00737

---



**FEMALE HOSETAIL**

**4" F x 4"** GK900.00718

**5" F x 4"** GK900.00139

**5" F x 5"** GK900.00719

---



**SIDE TEE**

**4" F x F x M** GK900.00709

**5" F x F x M** GK900.00710

---



**END PLUG**

**4" Male** GK900.00725

**5" Male** GK900.00726

---



**INCREASER**

**4" M x 5" F** GK900.00165

---



**VALVE ELBOW**

**4" In x 4" Out** GK900.00706

**4" In x 5" Out** GK900.00096

**5" In x 5" Out** GK900.00708

**Replacement Latch Hook** GK900.00100

---



**9 METRE MAIN LINE PIPE**

**4" M x F**

**5" M x F**

## GENUINE TVF



### BSP THREADED MALE COUPLING

4" Threaded GK900.00728  
5" Threaded GK900.00729

---



### BSP THREADED FEMALE COUPLING

4" Threaded GK900.00730  
5" Threaded GK900.00731

---



### FLANGED MALE COUPLING

100mm x 4" GK900.00079  
100mm x 5" GK900.00080  
125mm x 5" GK900.00081

---



### WELD ON FEMALE COUPLING

4" F Coupling GK900.00715  
5" F Coupling GK900.00716

---



### WELD ON MALE COUPLING

4" M Coupling GK900.00711  
5" M Coupling GK900.00712

---



### FLANGED FEMALE COUPLING

100mm x 4" GK900.00085  
100mm x 5" GK900.00086  
125mm x 5" GK900.00087

---



### RUBBER SEALS

4" Seal GK900.00703  
5" Seal GK900.00704  
6" Seal GK900.00705

---



### VALVE INSERT

4" M x 4" F x 4" T GK900.00738  
5" M x 5" F x 4" T GK900.00739

---



### VALVE INSERT PARTS

**Rubber Hydrant Valve Pad**  
4" Valve Pad GK900.00732  
5" Valve Pad GK900.00733

### Brass Hydrant Spindle

3" x 4" GK900.00734  
**Valve Spindle**  
5" x 6" GK900.00735  
**Valve Spindle**

## **GENUINE RAESA** (Wright Rain / TVF compatible)

Unsure of your type of Hook and Latch style? Talk to our specialists at your local Irrigation Centre.



**REDUCER**

- 3" M x 2" F**    GK900.00166
  - 4" M x 3" F**    GK900.00167
  - 5" M x 4" F**    GK900.00168
- 



**ELBOW 90 DEGREE**

- 3" M x 3" F**    GK900.00147
  - 4" M x 4" F**    GK900.00148
  - 5" M x 5" F**    GK900.00149
- 



**ELBOW 45 DEGREE**

- 3" M x 3" F**    GK900.00143
  - 4" M x 4" F**    GK900.00144
  - 5" M x 5" F**    GK900.00145
- 



**MALE HOSETAIL**

- 3" M x 3"**      GK900.00174
  - 4" M x 4"**      GK900.00175
  - 5" M x 5"**      GK900.00177
- 



**END TEE**

- 3" M x F x F**    GK900.00102
  - 4" M x F x F**    GK900.00103
  - 5" M x F x F**    GK900.00104
- 



**SIDE TEE**

- 3" F x F x M**    GK900.00106
  - 4" F x F x M**    GK900.00107
  - 5" F x F x M**    GK900.00108
- 



**END PLUG**

- 2" Male Plug**    GK900.00150
- 3" Male Plug**    GK900.00151
- 4" Male Plug**    GK900.00152
- 5" Male Plug**    GK900.00153



**VALVE ELBOW**

- 3" In x 3" Out**    GK900.00092
- 4" In x 3" Out**    GK900.00093
- 4" In x 4" Out**    GK900.00095
- 5" In x 5" Out**    GK900.00097
- 4" In x 4" Out Threaded**    GK900.00094
- Replacement Latch Hook**    GK900.00100



**FEMALE HOSETAIL**

- 3" F x 3"**      GK900.00137
  - 4" F x 4"**      GK900.00138
  - 5" F x 5"**      GK900.00140
- 



**9 METRE MAINLINE PIPE**

- 4" M x F**      GK900.00071
- 5" M x F**      GK900.00072

## GENUINE RAESA (Wright Rain / TVF compatible)

Unsure of your type of Hook and Latch style? Talk to our specialists at your local Irrigation Centre.



### BSP THREADED MALE COUPLING

<b>4" Threaded</b>	GK900.00155
<b>5" Threaded</b>	GK900.00156



### BSP THREADED FEMALE COUPLING

<b>4" Threaded</b>	GK900.00158
<b>5" Threaded</b>	GK900.00159



### WELD ON FEMALE COUPLING

<b>4" F Coupling</b>	GK900.00134
<b>5" F Coupling</b>	GK900.00135



### WELD ON MALE COUPLING

<b>4" M Coupling</b>	GK900.00111
<b>5" M Coupling</b>	GK900.00112
<b>6" M Coupling</b>	GK900.00113



### RUBBER SEALS

<b>4" Seal</b>	GK900.00074
<b>5" Seal</b>	GK900.00075
<b>6" Seal</b>	GK900.00076



### VALVE INSERT PARTS

<b>Rubber Hydrant Valve Pad</b>	
<b>4" Valve Pad</b>	GK900.00162
<b>5" Valve Pad</b>	GK900.00163
<b>Brass Hydrant Spindle</b>	
<b>3" x 4"</b>	GK900.00171
<b>Valve Spindle</b>	
<b>5" x 6"</b>	GK900.00172
<b>Valve Spindle</b>	



### VALVE INSERT

<b>3" M x 3" F x 3" T</b>	GK900.00470
<b>4" M x 4" F x 3" T</b>	GK900.00178
<b>4" M x 4" F x 4" T</b>	GK900.00179
<b>5" M x 5" F x 4" T</b>	GK900.00180
<b>6" M x 6" F x 4" T</b>	GK900.00181



## **GALVANISED** (Farmland / Javelin / Irrifrance compatible)

A Range of quality Hook and Latch fittings available in Galvanised Steel suitable for use with Farmland, Javelin and Irrifrance Systems.



**RE**

**4" M x 3" F** GK900.00007

**5" M x 4" F** GK900.00008

---



**ELBOW 90 DEGREE**

**4" M x 4" F** GK900.00030

**5" M x 5" F** GK900.00031

---



**ELBOW 45 DEGREE**

**4" M x 4" F** GK900.00055

**5" M x 5" F** GK900.00056

---



**MALE HOSETAIL**

**4" M x 4"** GK900.00014

**5" M x 5"** GK900.00015

---



**WELD ON FEMALE END**

**4" F End** GK900.00018

**5" F End** GK900.00019

---



**WELD ON MALE END**

**4" Male End** GK900.00026

**5" Male End** GK900.00027

---



**FEMALE HOSETAIL**

**4" F x 4"** GK900.00047

**5" F x 5"** GK900.00048

**5" F x 4"** GK900.00049

---



**VALVE ELBOW**

**4" In x 4" Out** GK900.00037

**FARMLAND VALVE ELBOW PARTS**

**Valve Elbow** GK900.00040

**Stem Seal**

**4" Valve** GK900.00510

**Elbow Clamp**

---



**END PLUG**

**4" Male Plug** GK900.00051

**5" Male Plug** GK900.00052

---



**INCREASER**

**4" M x 5" F** GK900.00010

---



**VALVE INSERT**

**5" M x 5" F** GK900.00034  
**x 4" T**

---



**RUBBER SEALS**

**4" Seal** GK900.00022

**5" Seal** GK900.00023

---

## **GALVANISED** (Bauer Type)

Lever Lock Couplings offer secure, positive connection manufactured from Galvanised Steel.



### **MALE HOSETAIL (W/O RING)**

<b>4" M x 4"</b>	GK900.00194
<b>5" M x 5"</b>	GK900.00195
<b>6" M x 6"</b>	GK900.00196



### **FEMALE HOSETAIL**

<b>4" F x 4"</b>	GK900.00199
<b>5" F x 5"</b>	GK900.00200
<b>6" F x 6"</b>	GK900.00201



### **ELBOW 90 DEGREE**

<b>4" M x 4" F</b>	GK900.00225
<b>5" M x 5" F</b>	GK900.00226
<b>6" M x 6" F</b>	GK900.00227



### **ELBOW 45 DEGREE**

<b>4" M x 4" F</b>	GK900.00222
<b>5" M x 5" F</b>	GK900.00223



### **BSP THREADED MALE COUPLING**

<b>4" Threaded</b>	GK900.00241
--------------------	-------------



### **SIDE TEE**

<b>4" F x M x M</b>	GK900.00230
<b>5" F x M x M</b>	GK900.00231



### **FEMALE END CAP**

<b>3" End Cap</b>	GK900.00215
<b>3 1/2" End Cap</b>	GK900.00216
<b>4" End Cap</b>	GK900.00217
<b>5" End Cap</b>	GK900.00218
<b>6" End Cap</b>	GK900.00219



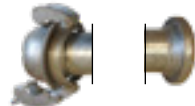
### **FOOTVALVE C/W STRAINER**

<b>4" Footvalve ROUND HOLES</b>	GK900.00188
<b>5" Footvalve ROUND HOLES</b>	GK900.00189
<b>6" Footvalve ROUND HOLES</b>	GK900.00190
<b>4" Footvalve SLOTTED HOLES</b>	GK900.00450
<b>5" Footvalve SLOTTED HOLES</b>	GK900.00451
<b>6" Footvalve SLOTTED HOLES</b>	GK900.00452



### **MALE END CAP**

<b>3 1/2" End Cap</b>	GK900.00204
<b>4" End Cap</b>	GK900.00205
<b>5" End Cap</b>	GK900.00206
<b>6" End Cap</b>	GK900.00207



### **6 METRE MAINLINE PIPE**

<b>4" M x F</b>	GK900.00210
<b>5" M x F</b>	GK900.00211
<b>6" M x F</b>	GK900.00212

## **GALVANISED** (Bauer Type)

Lever Lock Couplings offer secure, positive connection manufactured from Galvanised Steel.



### **WELD ON MALE COUPLING (ALUMINIUM)**

<b>4" M End</b>	GK900.00265
<b>5" M End</b>	GK900.00266
<b>6" M End</b>	GK900.00267



### **WELD ON FEMALE COUPLING (ALUMINIUM)**

**LeverLock/Bauer**

<b>4" F End</b>	GK900.00270
<b>5" F End</b>	GK900.00271
<b>6" F End</b>	GK900.00272



### **FLANGED COUPLINGS**

<b>100mm x 4" M L/L</b>	GK900.00500
<b>100mm x 4" M L/L</b>	GK900.00504
<b>125mm x 5" M L/L</b>	GK900.00505



### **O RINGS**

<b>3" Ring</b>	GK900.00283
<b>3 1/2" Ring</b>	GK900.00284
<b>4" Ring</b>	GK900.00285
<b>5" Ring</b>	GK900.00286
<b>6" Ring</b>	GK900.00287



### **WELD ON MALE COUPLING**

<b>3" M End</b>	GK900.00234
<b>3 1/2" M End</b>	GK900.00235
<b>4" M End</b>	GK900.00236
<b>5" M End</b>	GK900.00237
<b>6" M End</b>	GK900.00238



### **WELD ON FEMALE COUPLING**

<b>3" F End</b>	GK900.00258
<b>3 1/2" F End</b>	GK900.00259
<b>4" F End</b>	GK900.00260
<b>5" F End</b>	GK900.00261
<b>6" F End</b>	GK900.00262

### **O-RING PERROT**

<b>2.5"</b>	GK900.00551
<b>3"</b>	GK900.00552
<b>4"</b>	GK900.00553



### **LEVER RING**

<b>3" Ring</b>	GK900.00275
<b>3 1/2" Ring</b>	GK900.00276
<b>4" Ring</b>	GK900.00277
<b>5" Ring</b>	GK900.00278
<b>6" Ring</b>	GK900.00279



### **VALVE INSERT**

<b>4" M x 4" F x 4" T</b>	GK900.00243
<b>5" M x 5" F x 4" T</b>	GK900.00244



### **INCREASER**

<b>4" F x 5" M L/L</b>	GK900.00560
------------------------	-------------

## STEEL & ALUMINIUM

We stock a large range of components in both Steel and Aluminium to help you create bespoke Irrigation Solutions. Many items are not listed here, just call us for more details.



### STEEL WELD-ON HOSETAIL

- 3" Hoesetail GK900.00251
- 3 1/2" Hoesetail GK900.00252
- 4" Hoesetail GK900.00253
- 5" Hoesetail GK900.00254
- 6" Hoesetail GK900.00255



### STEEL PLATE FLANGE

- 80mm Flange GK900.00290
- 100mm Flange GK900.00291
- 125mm Flange GK900.00292
- 150mm Flange GK900.00293
- 200mm Flange GK900.00294



### REDUCER

- 4" x 3" Adaptor GK900.00297
- 5" x 4" Adaptor GK900.00298
- 6" x 4" Adaptor GK900.00299
- 6" x 5" Adaptor GK900.00300
- 8" x 6" Adaptor GK900.00301



### 90 DEGREE STEEL ELBOW

- 4" GK900.00455
- 5" GK900.00456
- 6" GK900.00457



### THREADED TUBE

- 4" GK900.00336
- 5" GK900.00337
- 6" GK900.00338



### 45 DEGREE STEEL ELBOW

- 4" GK900.00460
- 5" GK900.00461
- 6" GK900.00462



### FLANGED HYDRANT TOP

- 4" 100mm GK900.00090
- 5" 125mm GK900.00091



### STEEL PIPE 6M

- 4" Pipe GK900.00304
- 5" Pipe GK900.00305
- 6" Pipe GK900.00306



### PLATE FLANGE (ALUM)

- 100mm GK900.00320
- 125mm GK900.00321

### WELD-ON HYDRANT TOP

- 4" GK900.00129
- 5" GK900.00130

### THREADED HYDRANT TOP

- 3" GK900.00127



### REDUCER (ALUM)

- 4" x 5" Adaptor GK900.00315

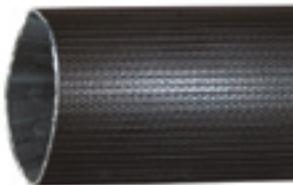


### WELD ON HOSETAIL (ALUM)

- 3" Hoesetail GK900.00123
- 4" Hoesetail GK900.00124
- 5" Hoesetail GK900.00125

## HILCOFLEX AGRO LAYFLAT HOSE

Outstanding abrasion-resistance properties, even on difficult ground surfaces



### HILCOFLEX AGRO

3"	GK900.00384
4"	GK900.00385
5"	GK900.00386

<b>Colour</b>	Black
<b>Jacket lining</b>	High-tenacity polyester, reinforced design. Polyamide/polyester; circular woven.
<b>Rubberised lining &amp; jacket</b>	Very high-grade NBR/PVC compound, extruded through the weave in a special one-step production process. Additives in the compound guarantee outstanding resistance to ageing and ozone.
<b>Specification</b>	Standard length 100/200 m
<b>Pressures</b>	Specifications apply only to the hose (medium water, 20°C). The potential working pressure may be lower than specified above for hose lines with couplings due to the nominal pressure of the couplings or the type of assembly. For compressed air, the maximum working pressure is 25% of the burst pressure.
<b>Application</b>	Irrigation (especially pivot systems), liquid manure distribution, slurry and waste-water distribution, transport hose for watering and drainage
<b>Temperature</b>	Continuous use -20°C to +80°C (water), Temporary up to +100°C (water)

Bore size Inch	Weight in g/m	Wall strength in mm	Working pressure in bar/psi	Working pressure max in bar/psi	Bursting pressure in bar/psi	Breaking strength in kg
2	600	3,3	16/230	20/290	50/725	3.900
2 4/7	750	3,3	16/230	20/290	50/725	6.300
3	900	3,3	16/230	20/290	50/725	8.800
3 1/2	1200	3,4	16/230	20/290	50/725	10.900
4	1350	3,5	16/230	20/290	50/725	12.400
4 1/2	1450	3,7	15/220	18/260	45/655	12.400
5	1700	3,9	15/220	18/260	45/655	17.000
6	1950	3,9	14/205	17/245	42/610	17.900
7	2900	4,5	14/205	17/245	42/610	24.000
8	3500	4,5	10/145	12/175	30/435	26.900
10	4200	5,2	10/145	12/175	30/435	43.200

## OROFLEX LAYFLAT HOSE

Premium quality, high pressure layflat hose.



<b>Colour</b>	Yellow nitrile rubber. Black colour on request
<b>Cover</b>	Nitrile rubber
<b>Lining</b>	Nitrile rubber
<b>Reinforcement</b>	High tenacity circular woven through the weave polyester/polyamide jacket
<b>Specification</b>	Fully complies to BS 6391 Supplied in coils of up to 200 metres
<b>Remarks</b>	Pressure data given is for water media. Air applications have a lower pressure rating. PLEASE CONSULT WITH SALES OFFICE FOR EXACT AIR PRESSURE DATA.
<b>Application</b>	Air, water, sludge/slurry, drag hoses. Compressed air breaker hoses. Used as a by-pass on temporary lines discharging hydrocarbons with an aromatic content not exceeding 40%
<b>Special Features</b>	Non-conductive. Can be used with repair sleeves for extra long service life.
<b>Temperature</b>	-25°C to +80°C. Intermittantly to 100°C

### OROFLEX

3" / 4" / 5" hose sizes available

ID Inch	ID mm	Wall mm	Coil size m	WP bar/psi	Bend radius mm	End pull Kg	Weight/M/ Gr?mt	Availability
2	51	2.8	60	21/315	1200	1500	640	**
2 1/2	63	2.8	60	17/250	1250	1750	750	**
2 3/4	70	3	60	17/250	1300	1900	800	**
3	76	3.2	200	17/250	1300	2600	950	*
4	102	4	200	17/250	1700	3780	1300	*
5	127	4	200	17/250	2000	5980	1900	*
6	152	4	200	17/250	2000	7280	2450	**
7	178	4	200	17/250	2100	8800	2600	**
8	203	4.5	60	13/200	2250	9320	3300	**
10	252	4.5	60	9/135	3000	13800	4000	**
12	305	5	60	8/120	3300	16800	5500	**

\* Usually ex-stock

\*\* 4 weeks

## ACCESSORIES

Full range of accessories for all types of systems.



### STEEL MAINLINE PIPE FILTER

4" Conical	GK900.00120
5" Conical	GK900.00121



### GREY SUCTION HOSE

4" Hose/m	GK900.00004
5" Hose/m	GK900.00005
6" Hose/m	GK900.00006



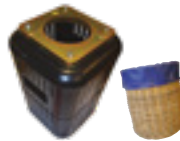
### BLACK SUCTION HOSE

5" Hose/m	GK900.00394
6" Hose/m	GK900.00395



### BOLT-UP HOSE CLAMPS

92 – 97mm	GK900.00376
104 – 112mm	GK900.00377
113 – 121mm	GK900.00378
122 – 130mm	GK900.00379
131 – 139mm	GK900.00380
140 – 148mm	GK900.00381
162 – 174mm	GK900.00382



### BASKET / INLET STRAINERS

Small Wicker	GK900.00364
3" – 6" Suction Lines	
Large Wicker	GK900.00365
5" – 8" Suction Lines	
4" Plastic	GK900.00366
5" Plastic	GK900.00367
6" Plastic	GK900.00368



### BAND-IT STRAP

5/8" x 30M Cassette	GK900.00372
1/2" Strap/m x Cassette	GK900.00390
5/8" Strap/m x Cassette	GK900.00373
3/4" x 30 M Cassette	GK900.00374
3/4" Strap/m Cassette	GK900.00375



### GLAND PACKINGS

6.5mm Ring	GK900.00001
8mm Packing x Metre	GK900.00400
10mm Gland x Metre	GK900.00401



### BAND-IT HOSE FASTENINGS

Band-It Clamping Tool	GK900.00369
1/2" Buckle	GK900.00389
5/8" Buckle	GK900.00370
3/4" Buckle	GK900.00371

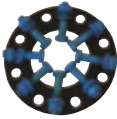


### WATER METERS

80mm Analogue	GK900.00410
100mm Analogue	GK900.00413
125mm Analogue	GK900.00414

## ACCESSORIES

Full range of accessories for all types of systems.



### FLANGE GASKET KITS (NP16-4504 FLANGE)

80mm	GK900.00417
100mm	GK900.00418
125mm	GK900.00419
150mm	GK900.00420



### FLANGE GASKETS (NP16-4504 FLANGE)

80mm	GK900.00421
100mm	GK900.00422
125mm	GK900.00423
150mm	GK900.00424
200mm	GK900.00425
Single	



### IN-LINE VALVES

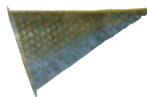
6" Wheel Operated Gate Valve	GK900.00406
------------------------------	-------------

### BUTTERFLY VALVES

4" Butterfly Check Valve	GK900.00407
5" Butterfly Check Valve	GK900.00408

### AIR ELIMINATION VALVES

Air Elimination	GK900.00409
-----------------	-------------



### STEEL HOSE REEL FILTER

4" Filter	GK900.00247
5" Filter	GK900.00248



### REPLACEMENT VALVE ELBOW LATCH HOOK

Replacement Latch Hook	GK900.00100
------------------------	-------------



### GALVANISED HOOK

2"- 3"- 4" x 6mm Hook	GK900.00116
5"- 6"- 8" x 10mm Hook	GK900.00117



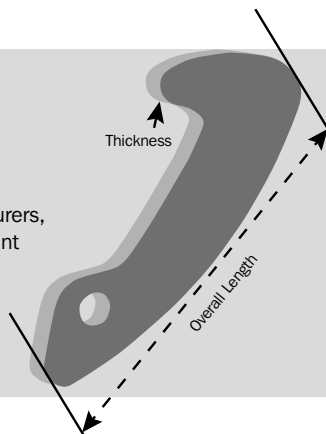
### REPLACEMENT HOOK AND BAND PARTS

#### Wright Rain Specific

4" Band	GK900.00324
5" Band	GK900.00325
4" Hook	GK900.00326
5" Hook	GK900.00327
Spacer Piece	GK900.00328
Hook Spring	GK900.00329

## KNOW YOUR HOOKS?

Hook length and thickness can vary between manufacturers, affecting the fit. It is important to describe your hook type accurately when ordering Hook and Latch components.





# STORZ



**STORZ FEMALE BSP**

- 110A - 3"** GK900.00602
- 110A - 4"** GK900.00601
- 110A - 5"** GK900.00603
- 125 - 4"** GK900.00604
- 125 - 5"** GK900.00605
- 150 - 6"** GK900.00606



**STORZ HOSETAIL**

- 110A - 100mm** GK900.00611
- 110A - 110mm** GK900.00612
- 110A - 125mm** GK900.00613
- 125 - 125mm** GK900.00600
- 160 - 150mm** GK900.00614



**STORZ FEMALE BSP SWIVEL**

- 110A - 3"** GK900.00615
- 110A - 4"** GK900.00616
- 125 - 4"** GK900.00617
- 125 - 5"** GK900.00618
- 150 - 6"** GK900.00619



**STORZ MALE BSP**

- 110A - 4"** GK900.00607
- 110A - 5"** GK900.00608
- 125 - 5"** GK900.00609
- 150 - 6"** GK900.00610



**STORZ FLANGE**

- 110A - DN80** GK900.00627
- 110A - DN100** GK900.00628
- 125 - DN125** GK900.00629
- 150 - DN150** GK900.00630



**STORZ MALE BSP SWIVEL**

- 110A - 3"** GK900.00620
- 110A - 4"** GK900.00621
- 125 - 5"** GK900.00622
- 150 - 6"** GK900.00623



**STORZ REDUCER**

- 125 - 110A** GK900.00624
- 150 - 110A** GK900.00625
- 150 - 125** GK900.00626



**STORZ BLANKING CAP**

- 110A** GK900.00631
- 125** GK900.00632
- 150** GK900.00633

## PRIMUS RANGE: STANDARD EQUIPMENT

**50mm towing eye with extra long drawbar and integrated hydraulic jack.** 100mm square front jack stand with securing pin.



**Single axle chassis – Standard**  
Track width 2.25m fitted with 15.0 – 55 R17 tyres.



**Hydraulic rotation on turntable.**  
Controlled by valve block at the front of the machine.



**Layflat hose storage winder.** Front mounted – Supplied with 7m of 4” hose (customer to specify hydrant size and fitting type).



**Double inlet water feed pipe with electronic shut off valve.**  
Bauer 4”/HK108 fittings.



**Pressure switch.** System requires 2 Bar minimum operating pressure to open shut off valve.



**Inline filter.** Filter to prevent stones reaching the turbine.



**Turbine mounted to 4 speed Comer gearbox.** Electronically controlled bypass valve to regulate retraction speed.



**High quality PTO winding handle.**  
Cast aluminium handle with steel shaft.



**Pressure gauge.** Gauge mounted after turbine to give accurate information.



**Reinforced smooth walled drum.**  
Extra strong smooth walled drum prevents damage to the PE hose.



**Heavy duty backstop.** Backstop keeps tension on hose during retraction and transport – easily replaced if ever damaged.



**Special PE Hose (Egeplast).**  
Constant 10mm wall thickness up to 500m – between 500m and 600m wall thickness 12.3mm.



**Precision hose guide section.**  
Precision machined scroll shaft with extra wide scroll casing; hose is supported by steel rollers.



**Grimme 2-KR Computer control panel.** Fast programming of data – 12V battery, battery charger and 4.0W solar panel included.



**Gun trolley lifts with rear support legs.** 8.2mm thick legs on 3000 II range, linkage between lift frame and feet.



**Offset gun trolley – 3 wheels, 100mm box chassis.** Adjustable track width up to 2.25m, straight pull out bar, ground clearance 1.6m.



**Komet Twin TWIN 140 Variangle rain gun.** Nozzles supplied 22mm, 24mm and 26mm as standard. (from 2017 onwards).



**Road lighting kit with marker boards.** Lighting kit to be mounted on gun trolley.



**Track Width Adjustment** by winding jack – for road transport 150cm – 200cm.



**PRIMUS 2800 II**

Ø mm Outside	Length m	Wall-Thickness mm
110	400	10.0
110	460	10.0
110	490	10.0



1



2

**PRIMUS 3000 II**

Ø mm Outside	Length m	Wall-Thickness mm
110	500	10.0
110	550	10.0*
110	600	10.0*
110	630	10.0*

\*Any length above 500m first section on hose on drum is 12.3mm wall thickness

**Image 1.** Primus 2800 II (400–490m)

**Image 2.** Primus 3000 II (500–630m)

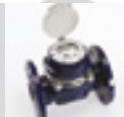
**Other sizes available 300m up to 850m – Contact Technical Sales**

**PRIMUS RANGE: AVAILABLE OPTIONS**

**Remote start/stop phone system.** GSM Modem in combination with 2 KR-H panel – can be retrofitted.



**Inline flow meter 3"**



**Swinging beam axle.** Four wheel chassis inc. 15.0/55 R17 Tyres.



**Signal light.** Flashes to indicate when 30m of hose remains on drum and at the end of the run.



**Additional storage box for accessories.** Side mounted box for additional storage of fittings.



**Hydraulic brakes.** Brakes fitted to one axle – hydraulically operated (special order).



**Price reduction for no gun trolley.** No gun trolley or lift frame supplied – for use with boom irrigator.



**Air Compressor.** Atlas Copco compressor hydraulically driven from tractor hydraulics to drain reel of water.



**3 point linkage towing out bar.** Tractor mounted frame with centre and offset pulling points for trolley and booms.



**Fully automatic hydraulic hitch.** With hydraulic and electrical connection for road transport.



## PRIMUS RANGE: BENEFITS OF GRIMME CONTROL PANEL



**Competitor:**  
Nortoft Based  
System

Features	Standard	Phone	Competitor:	
	2KR	2KR-H	PR-7	PR10-12
Regulation of rewinding speed	✓	✓	✓	✓
Pre-irrigation timer	✓	✓	✓	✓
Post-irrigation timer	✓	✓	✓	✓
4 programmable speed zones	✓	✓		✓
Irrigation run timer	✓	✓		✓
Automatic start by time	✓	✓		✓
Display of Stop Time	✓	✓		✓
Display of remaining hose length on working screen	✓	✓		✓
Voltage display	✓	✓	✓	✓
Pressure switch – low pressure monitoring	✓	✓	✓	✓
Activation of signal light at end of run	✓	✓		✓
GSM plug in mobile modem facility	✓			✓
GSM Modem		✓		
Information of operating pressure by SMS		✓		
Information and adjustment of rewinding speed by SMS		✓		
Retrofitting of GSM Modem	✓			✓
Software upgrade facility to latest version	✓	✓		

## PRIMUS RANGE: FEATURES

Features	2800II	3000II	Shared
Drawbar Assembly			✓
Front Jack Support			✓
Wheels and tyres			✓
Inlet water pipe			✓
Turbine and gearbox			✓
Inlet union elbow and drum	✓	✓	
Scroll shaft and housing			✓
Chassis	✓	✓	
Gun trolley and lift frame			✓
Computer controller and full electronics			✓
Shut off linkage assembly			✓

## IRRIGATION PUMPSETS: STANDARD EQUIPMENT

**Two wheel chassis.** 12.5/80 – 15.3 Wheels and tyres with mudguards.



**Removable towing eye hitch.** Security feature – included front levelling jack.



**Iveco Tier 3 125hp Engine.** 4 cylinder turbo charged engine.



**Caprari flange mounted pump.** Standard; MG MEC 80-4/3A. Special Option; MG MEC 100/2A.



**Engine & water monitoring with built in safety shut down systems.** Monitoring of high & low water flows along with oil & temperature sensing.



**Digital pressure controller.** Sets operating parameters.



**Water meter with pulse output.** Externally mounted 4" flow meter monitoring for high and low flow rates.



**Non-return valve.** Pump protection against anti-siphoning and water surging.



**Semi automatic electric primer.** Suction primer kit which will automatically hold prime until engine is started.



**Super silent acoustic canopy with door locks – rated at 71dB @ 1m.** Ensures quiet operation.



**Light inside canopy with fully opening doors for maximum access.** Wide opening doors without pillars for maximum access.



**Separate storage area inside canopy.** Large lockable area in front of radiator for storage of fittings.



**Fully bunded 1750L fuel tank.** Fully welded and tested tank – in excess of 110% bund holding capacity.



**Fuel tank level indicator.** Internally mounted mechanical fuel gauge.



### MG MEC 80-4/3A

Engine HP	Flowrate M <sup>3</sup>	Pressure Bar	No. of Reels
125	115	10.7	2

### MG MEC 100/2A (SPECIAL ORDER OPTION)

Engine HP	Flowrate M <sup>3</sup>	Pressure Bar	No. of Reels
125	209	11.9	3

## IRRIGATION PUMPSETS: AVAILABLE OPTIONS

**Additional hand primer kit.** Allows operator to prime if battery has low charge.



**Remote auto start/stop system by text.** Includes automatic suction primer, remote start/stop and text notification.



**Suction & layflat hoses.** 5" suction hose for 80-4/3A pump and 6" for 100/2A. Foot valve included and choice of delivery hose fittings.



**Datag.** Additional security marking to aid with identification after a theft.



## FUEL BOWSER: STANDARD EQUIPMENT

**50mm ball hitch with over-run brakes.** Lockable ball hitch with integrated swivelling jockey wheel assembly.



**Twin axle chassis.** Rubber Indespension axle units with braked hubs.



**165 R13 wheels and tyres.** Integrated full length mudguards.



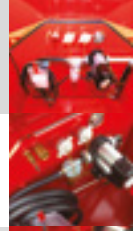
**Road lighting kit.** Full lighting board including number plate holder and light.



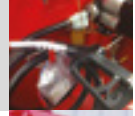
**1000L / 220 Gallon fuel tank.** Fully bunded and sealed unit conforming to ADR, IBC and UN regulations – VOCA tested.



**Lockable storage areas.** Front mounted storage area housing pump, hose and battery (battery supplied separately).



**80L/min fuel pump.** High quality 12V 80 Litre/min fuel pump and 10 micron fuel filter.



**6m long fuel hose.** Auto shut off fuel delivery nozzle.



**Grimme red colour.** Durable paint finish with Grimme logos on side and rear of bowzers.



**Additional rear storage tank for AdBlue.** 220 Litre capacity.

## FUEL BOWSER: AVAILABLE OPTIONS

**Fuel flow meter.** Additional inline mechanical fuel flow meter – manual reset.



## LAYFLAT REELER: STANDARD EQUIPMENT

### 3 Point linkage tractor mounted.

Unit can be mounted on the front and rear of the tractor.



**Removable drum.** Quick release, interchangeable drum; just 2 securing pins hold drum in position.



### Galvanised chassis and drum.

Durable and rust resistant finish.



**Guidance arm.** Hydraulically controlled guidance arm to aid with neat hose layering – extends for field work.



### Hydraulic winding of the drum.

Hydraulic motor mounted on the winder and controlled by the tractor's oil flow.



### Roller frame.

Steel rollers help with neat layering and water removal.



**Gear driven drum.** Positive drive to the drum – wide cast steel gear fitted on the drum.



**Safety shut off bar.** Safety trip bar to stop drum winding in the case of over filling drum.



Hose capacity 700m of 4" or up to 550m of 5" (number of coupling and coupling type may reduce total capacity)

## LAYFLAT REELER: AVAILABLE OPTIONS

**Additional drum.** For storing extra hose – unit is quickly interchanged by releasing 2 securing pins.



**Layflat hose.** 4" and 5" available lengths up to 100m carried in stock.



### Separating plates.

Additional plates allow for different hose configurations to be installed.



**Storz coupling.** Robust no leak coupling, will flow through guidance arm roller frame, available in 4" & 5"



# YOUR LOCAL GRIMME IRRIGATION CENTRES

## **Grimme – Swineshead**

Boston, Lincolnshire PE20 3PS

**Telephone:** 01205 821491

---

## **Grimme – Shrewsbury**

Shropshire SY1 3TB

**Telephone:** 01743 443665

---

## **Grimme – York**

Dunnington, York YO19 5PA

**Telephone:** 01904 481648

---

## **Grimme – Fife**

Glenrothes, Fife KY6 2RU

**Telephone:** 01592 631291

---

**OUT OF HOURS SUPPORT – CALL JUST ONE NUMBER**

# 0330 124 3553

The contents are intended to assist type illustration & recognition. Actual parts supplied rely on accurate information and specifications provided by the customer and the availability of parts or suitable alternatives for different manufacturers' systems.

Grimme accepts no responsibility for any damage caused as a result of system installation by the customer.

