



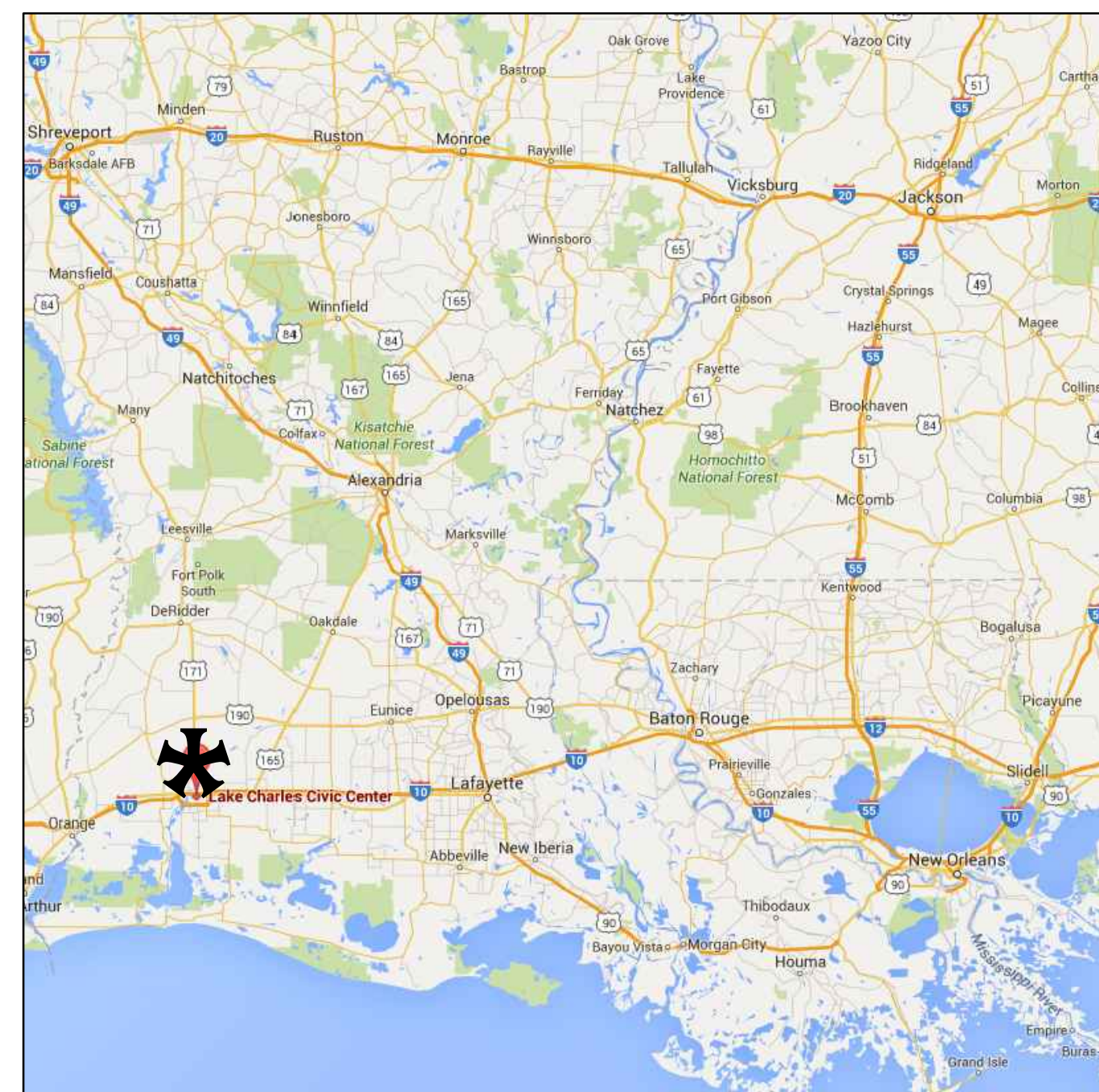
# ROSA HART THEATRE REPAIRS

## LAKE CHARLES CIVIC CENTER RIGGING REPLACEMENT

900 LAKESHORE DRIVE  
LAKE CHARLES, LOUISIANA 70601

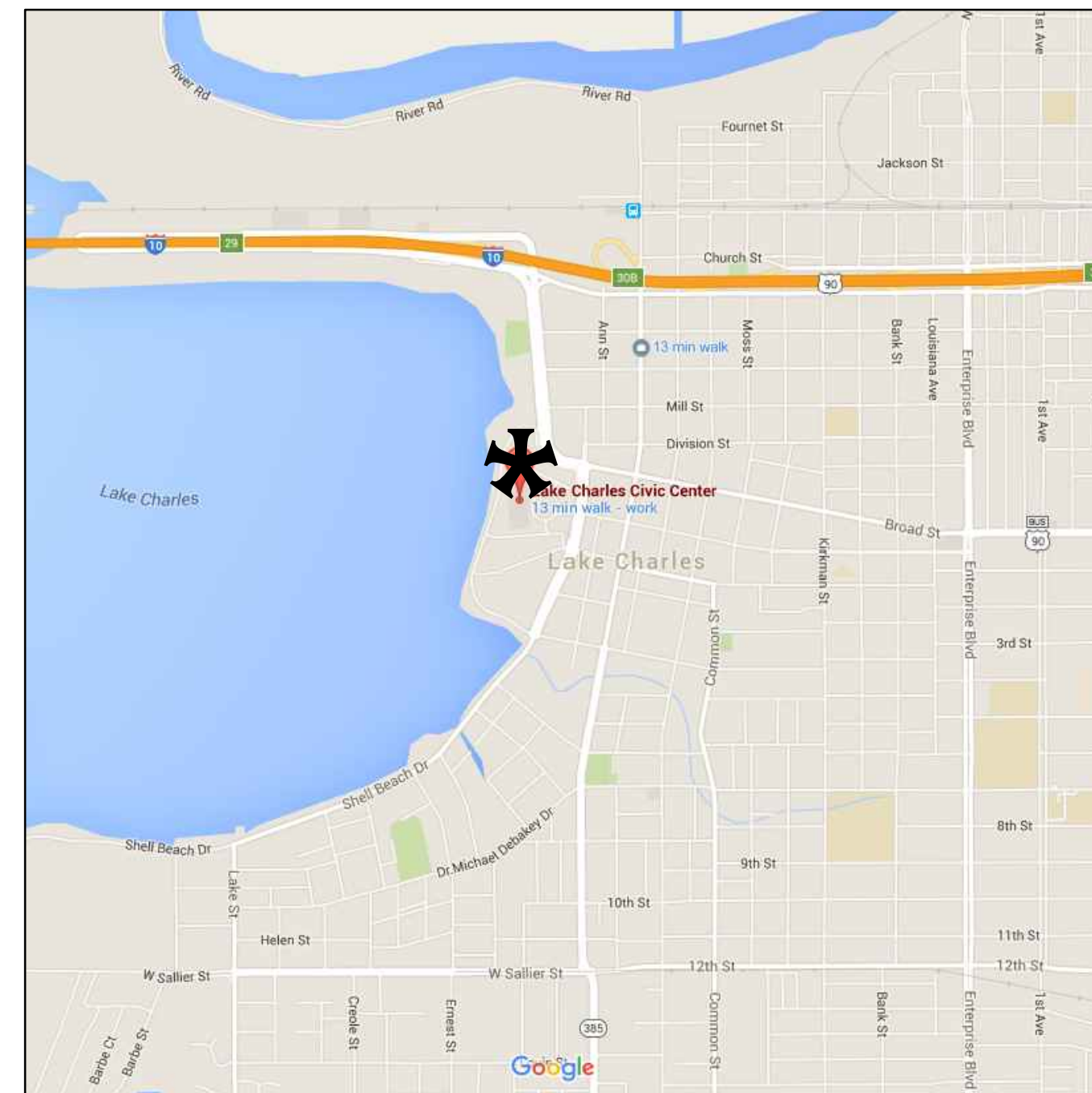


CITY OF LAKE CHARLES  
MAYOR - NICHOLAS HUNTER



1 LOCATION MAP

N.T.S.



2 VICINITY MAP

N.T.S.

APRIL 2020  
CITY # CP9778

### SHEET INDEX

A0.0	COVER SHEET / PROJECT INFORMATION
TR101	BATTEN LAYOUT PLAN VIEW
TR102	RIGGING SCHEDULE
TR103	RIGGING SCHEDULE 2
TR201	UTILITY BATTEN ELEVATION
TR202	ELECTRIC ELEVATION
TR203	FIRE CURTAIN
TR301	RIGGING DETAILS
TR302	RIGGING-FIRE CURTAIN DETAILS

DATE  
APRIL 2020

**MOSS ARCHITECTS, INC.**  
A Professional Corporation  
3225 MANLY BLVD  
LAKE CHARLES, LA 70601  
RICHARD A. STEEN, AIA, ARCHITECT  
D. RAVELLE REED, AIA, ARCHITECT  
KYLE W. BENNETT, ASSOCIATE AIA  
SCOTT MANINO, EI  
(337) 433-8166 - PHONE  
(337) 433-8167 - FAX  
WWW.MOSSARCHITECTS.COM



ROSA HART THEATRE REPAIRS  
RIGGING REPLACEMENT  
900 LAKE SHORE DRIVE  
LAKE CHARLES, LOUISIANA 70601  
COVER SHEET / PROJECT INFORMATION

A<sup>0.0</sup>  
SHEET

Federal copyright laws protect the intellectual property of designers by giving copyright protection to plans and designs. The use of these plans and specifications shall be restricted to the original site for which they were prepared and publication thereof is expressly limited to such use. Reproduction, publication, or reuse by any method, in whole or in part, is prohibited. Plans cannot be modified or redrawn without the copyright owner's written approval. Title to the plans and specifications remain with Schuler Shook without prejudice.

THIS DRAWING INDICATES GENERAL LAYOUT AND DESIGN OF STAGE AND LIGHTING SYSTEMS. REVIEW BY A QUALIFIED ENGINEER IS NECESSARY TO ASSURE SAFETY AND CODE COMPLIANCE.

**ROSA HART THEATRE**  
**REPAIR PROJECT - RIGGING**  
 900 Lakeshore Dr,  
 LAKE CHARLES, LA 70601

REVISION	DATE
△	
△	
△	
△	
△	

DATE: 10 APRIL 2019

SCALE: AS NOTED

DRAWN BY:

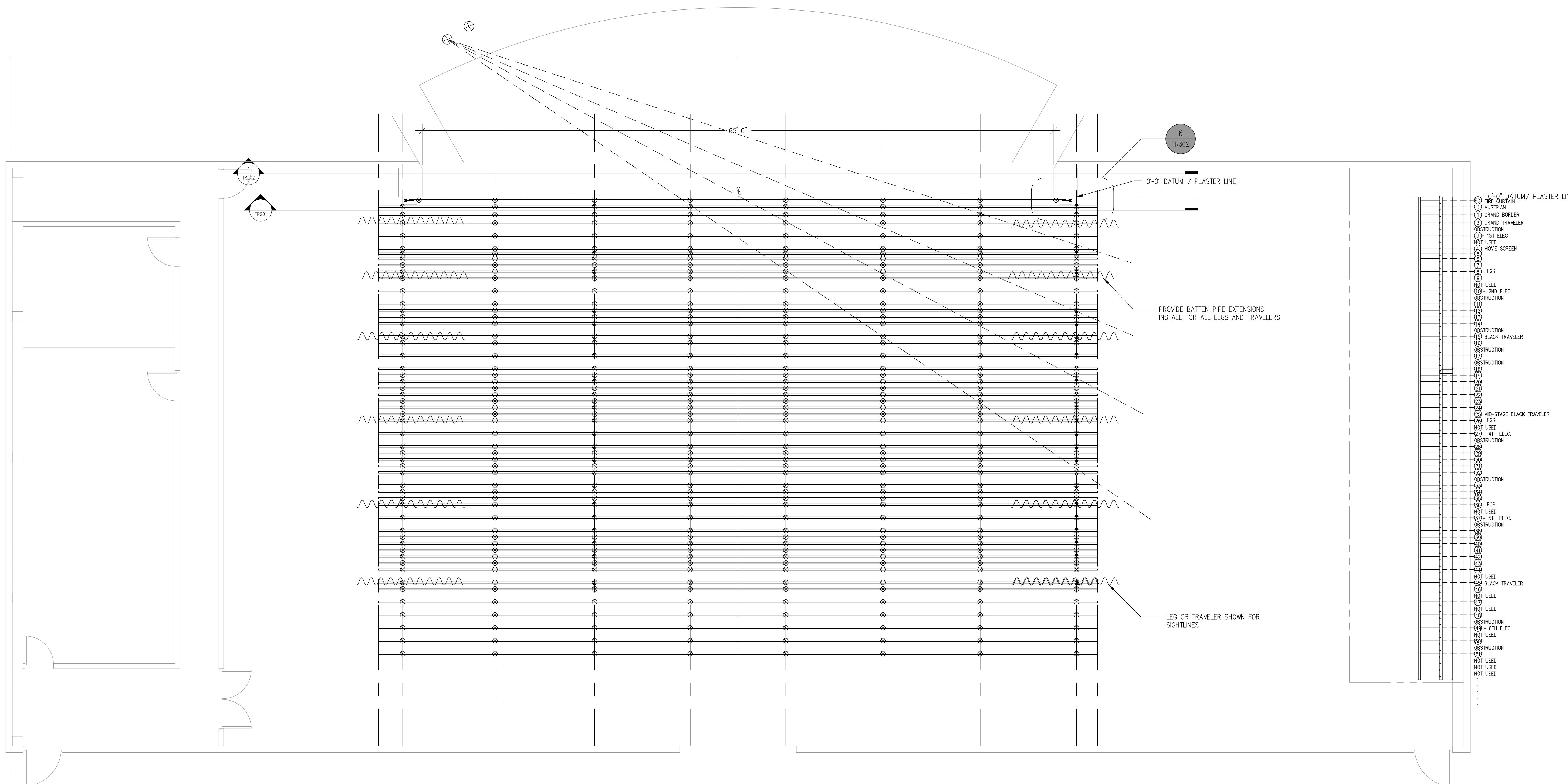
APPROVED BY: KHC

PROJECT #: 1842.00

**BATTEN LAYOUT  
 PLAN VIEW**

01/29/2018

**TR101**



1 PLAN - BATTEN LAYOUT  
 SCALE: 3/16" = 1'-0"

DRAWINGS ARE DIAGRAMMATIC. VERIFY ALL DIMENSIONS.

C:\Users\kcomrad\Documents\Dallas\T-1005 O-R\Rosa Hart Theatre Rigging Renovation-Lake Charles LA-1842\Drawings\CD\TR-xx\_200303-Rev2-Bound.dwg, 5/5/2020 12:57:37 PM

Federal copyright laws protect the intellectual property of designers by giving copyright protection to plans and designs. The use of these plans and specifications shall be restricted to the original site for which they were prepared and publication thereof is expressly limited to such use. Reproduction, publication, or reuse by any method, in whole or in part, is prohibited. Plans cannot be modified or redrawn without the copyright owner's written approval. Title to the plans and specifications remain with Schuler Shook without prejudice.

THIS DRAWING INDICATES GENERAL LAYOUT AND DESIGN OF STAGE AND LIGHTING SYSTEMS. REVIEW BY A QUALIFIED ENGINEER IS NECESSARY TO ASSURE SAFETY AND CODE COMPLIANCE.

**ROSA HART THEATRE**  
**REPAIR PROJECT - RIGGING**  
 900 Lakeshore Dr,  
 LAKE CHARLES, LA 70601

SET NO.	ARBOR SLOT	REVISED DESCRIPTION	LOCATION FROM DATUM	PERMANENT BATTEN LENGTH	BATTEN TYPE	SUSPENSION	LOW TRIM	HIGH TRIM <sup>5</sup>	PAYLOAD (NOT INCLUDING DEAD LOAD)	NEW HEAD BLOCK	NEW LOFT BLOCK	SHEAVES PER BATTEN	ARBOR LENGTH* (AS REQ.)	ARBOR TYPE (SEE SPEC FOR ALTERNATE)	COMMENTS
		DATUM LINE	0'0"												DISTANCE SHOWN ARE MEASURED FROM THE UPSTAGE EDGE OF PROSCENIUM
FC	A1	FIRE CURTAIN	0'-4"	AS. REQ.		MOTORIZED									LINE SHAFT
B	A2	AUSTRIAN (ROMAN) GRAND CURTAIN (RED - MOTORIZED WATERFALL)	1'-0" (1'-0" ARBOR)			MOTORIZED			1000	12"	8"	8	7'-8" OR AS REQ.	FRONT LOADING ARBOR	ADJUST BATTEN SPACING FOR LS B, 1, 2, & 3(1ST ELECTRIC) & 4 & 5 TO PROVIDE AS MUCH CLEARANCE AS POSSIBLE FOR DRAPERIES TO OPERATE.
1	A3	GRAND BORDER (RED)	1'-10" (1'-8" ARBOR)	74'-0"	1	COUNTERWEIGHT	4'-0"	61'-0"	1,000	12"	8"	8	7'-8"	FRONT LOADING ARBOR	ADJUST BATTEN SPACING FOR LS B, 1, 2, & 3(1ST ELECTRIC) & 4 & 5 TO PROVIDE AS MUCH CLEARANCE AS POSSIBLE FOR DRAPERIES TO OPERATE.
2	A4	GRAND TRAVELER (RED - HOUSE CURTAIN)	2'-8" (2'-4" ARBOR)	74'-0"	1	COUNTERWEIGHT	4'-0"	61'-0"	1,000	12"	8"	8	7'-8"	FRONT LOADING ARBOR	ADJUST BATTEN SPACING FOR LS B, 1, 2, & 3(1ST ELECTRIC) & 4 & 5 TO PROVIDE AS MUCH CLEARANCE AS POSSIBLE FOR DRAPERIES TO OPERATE.
	A5	OUTRIGGER PIPES OBSTRUCTION	3'-0"												
3	A6	1ST ELECTRIC	4'-0" (3'-8" arbor)	74'-0"	2	COUNTERWEIGHT	4'-0"	54'-6"	2,000	12"	8"	8	9'-9" TO 12'-0" (DEPENDING ON TYPE)	FRONT LOADING ARBOR	ADJUST BATTEN SPACING FOR LS B, 1, 2, & 3(1ST ELECTRIC) TO PROVIDE AS MUCH CLEARANCE AS POSSIBLE FOR DRAPERIES TO OPERATE. MINIMUM 16" CLEARANCE FOR ELECTRIC ON EACH SIDE.
X	A7	BLANK SPACE (NOT USED)	4'-4"					61'-0"							
4	A8	MOVIE SCREEN	5'-4" (5'-0" ARBOR)	74'-0"	1	COUNTERWEIGHT	4'-0"	61'-0"	1,000			8			ADJUST BATTEN SPACING FOR LS B, 1, 2, & 3(1ST ELECTRIC) & 4 & 5 TO PROVIDE AS MUCH CLEARANCE AS POSSIBLE FOR DRAPERIES TO OPERATE.
5	A9	UTILITY	5'-10" (5'-8" ARBOR)	74'-0"	1	COUNTERWEIGHT	4'-0"	61'-0"	1,000	12"	8"	8	7'-8"	FRONT LOADING ARBOR	ADJUST BATTEN SPACING FOR LS B, 1, 2, & 3(1ST ELECTRIC) & 4 & 5 TO PROVIDE AS MUCH CLEARANCE AS POSSIBLE FOR DRAPERIES TO OPERATE.
6	A10	UTILITY	6'-4"	74'-0"	1	COUNTERWEIGHT	4'-0"	61'-0"	1,000	12"	8"	8	7'-8"	FRONT LOADING ARBOR	
7	A11	BORDER (BLACK)	7'-0"	74'-0"	1	COUNTERWEIGHT	4'-0"	61'-0"	1,000	12"	8"	8	7'-8"	FRONT LOADING ARBOR	
8	A12	LEGS 1 (BLACK)	7'-8"	74'-0"	1	COUNTERWEIGHT	4'-0"	61'-0"	1,000	12"	8"	8	7'-8"	FRONT LOADING ARBOR	
9	A13	UTILITY	8'-4"	74'-0"	1	COUNTERWEIGHT	4'-0"	61'-0"	1,000	12"	8"	8	7'-8"	FRONT LOADING ARBOR	
X	A14	BLANK SPACE (NOT USED)	9'-0"												
10	A15	2ND ELECTRIC	9'-8"	74'-0"	2	COUNTERWEIGHT	4'-0"	54'-6"	2,000	12"	8"	8	9'-9" TO 12'-0" (DEPENDING ON TYPE)	FRONT LOADING ARBOR	
X	A16	OUTRIGGER PIPES OBSTRUCTION	10'-4"					61'-0"							
11	A17	UTILITY	11'-0"	74'-0"	1	COUNTERWEIGHT	4'-0"	61'-0"	1,000	12"	8"	8	7'-8"	FRONT LOADING ARBOR	
12	A18	UTILITY	11'-8"	74'-0"	1	COUNTERWEIGHT	4'-0"	61'-0"	1,000	12"	8"	8	7'-8"	FRONT LOADING ARBOR	
13	A19	UTILITY	12'-4"	74'-0"	1	COUNTERWEIGHT	4'-0"	61'-0"	1,000	12"	8"	8	7'-8"	FRONT LOADING ARBOR	
14	A20	BORDER (BLACK)	13'-0"	74'-0"	1	COUNTERWEIGHT	4'-0"	61'-0"	1,000	12"	8"	8	7'-8"	FRONT LOADING ARBOR	
X	A21	OBSTRUCTION	13'-8"												
15	A22	DOWNSTAGE TRAVELER (BLACK)	14'-4"	74'-0"	1	COUNTERWEIGHT	4'-0"	61'-0"	1,000	12"	8"	8	7'-8"	FRONT LOADING ARBOR	
16	A23	UTILITY	15'-0"	74'-0"	1	COUNTERWEIGHT	4'-0"	61'-0"	1,000	12"	8"	8	7'-8"	FRONT LOADING ARBOR	
X	A24	OBSTRUCTION AT GRID	15'-8"												
17	A25	3RD ELECTRIC	16'-4"	74'-0"	2	COUNTERWEIGHT	4'-0"	54'-6"	2,000	12"	8"	8	9'-9" TO 12'-0" (DEPENDING ON TYPE)	FRONT LOADING ARBOR	
X	A26	OUTRIGGER PIPES OBSTRUCTION	17'-0"												
18	A27	UTILITY	17'-8"	74'-0"	1	COUNTERWEIGHT	4'-0"	61'-0"	1,000	12"	8"	8	7'-8"	FRONT LOADING ARBOR	
19	A28	UTILITY	18'-4"	74'-0"	1	COUNTERWEIGHT	4'-0"	61'-0"	1,000	12"	8"	8	7'-8"	FRONT LOADING ARBOR	
20	A29	UTILITY	19'-0"	74'-0"	1	COUNTERWEIGHT	4'-0"	61'-0"	1,000	12"	8"	8	7'-8"	FRONT LOADING ARBOR	
21	A30	UTILITY	19'-8"	74'-0"	1	COUNTERWEIGHT	4'-0"	61'-0"	1,000	12"	8"	8	7'-8"	FRONT LOADING ARBOR	
22	A31	UTILITY	20'-4"	74'-0"	1	COUNTERWEIGHT	4'-0"	61'-0"	1,000	12"	8"	8	7'-8"	FRONT LOADING ARBOR	
23	A32	UTILITY	21'-0"	74'-0"	1	COUNTERWEIGHT	4'-0"	61'-0"	1,000	12"	8"	8	7'-8"	FRONT LOADING ARBOR	
24	A33	BORDER (BLACK)	21'-8"	74'-0"	1	COUNTERWEIGHT	4'-0"	61'-0"	1,000	12"	8"	8	7'-8"	FRONT LOADING ARBOR	
25	A34	MID-STAGE TRAVELER (BLACK)	22'-4"	74'-0"	1	COUNTERWEIGHT	4'-0"	61'-0"	1,000	12"	8"	8	7'-8"	FRONT LOADING ARBOR	
26	A35	LEGS 2 (BLACK)	23'-0"	74'-0"	1	COUNTERWEIGHT	4'-0"	61'-0"	1,000	12"	8"	8	7'-8"	FRONT LOADING ARBOR	
X	A36	BLANK SPACE (NOT USED)	23'-8"												
27	A37	4TH ELECTRIC	24'-4"	74'-0"	2	COUNTERWEIGHT	4'-0"	54'-6"	2,000	12"	8"	8	9'-9" TO 12'-0" (DEPENDING ON TYPE)	FRONT LOADING ARBOR	
X	A38	OUTRIGGER PIPES OBSTRUCTION	25'-0"	74'-0"				61'-0"							

REVISION	DATE
△	
△	
△	
△	
△	

DATE: 10 APRIL 2019

SCALE: AS NOTED

DRAWN BY:

APPROVED BY: KHC

PROJECT #: 1842.00

**RIGGING SCHEDULE**

01/29/2018

**TR102**

C:\Users\kcomrad\Documents\Dallas-T-1085 O-R\Rosa Hart Theatre Rigging Renovation-Lake Charles, LA-1842\Drawings\CD\TR-xx\_200303-Rev2-Bound.dwg, 5/15/2020 12:57:39 PM

Federal copyright laws protect the intellectual property of designers by giving copyright protection to plans and designs. The use of these plans and specifications shall be restricted to the original site for which they were prepared and publication thereof is expressly limited to such use. Reproduction, publication, or reuse by any method, in whole or in part, is prohibited. Plans cannot be modified or redrawn without the copyright owner's written approval. Title to the plans and specifications remain with Schuler Shook without prejudice.

THIS DRAWING INDICATES GENERAL LAYOUT AND DESIGN OF STAGE AND LIGHTING SYSTEMS. REVIEW BY A QUALIFIED ENGINEER IS NECESSARY TO ASSURE SAFETY AND CODE COMPLIANCE.

**ROSA HART THEATRE**  
**REPAIR PROJECT - RIGGING**  
**900 Lakeshore Dr,**  
**LAKE CHARLES, LA 70601**

28	A39	UTILITY	25'-8"	74'-0"	1	COUNTERWEIGHT	4'-0"	61'-0"	1,000	12"	8"	8	7'-8"	FRONT LOADING ARBOR
29	A40	UTILITY (PREFERRED NOT TO USE BECAUSE OF MOVIE SCREEN CLEARANCE)	26'-4"	74'-0"	1	COUNTERWEIGHT	4'-0"	61'-0"	1,000	12"	8"	8	7'-8"	FRONT LOADING ARBOR
30	A41	MOVIE SCREEN	27'-0"	74'-0"	1	COUNTERWEIGHT	4'-0"	61'-0"	1,000	12"	8"	8	7'-8"	FRONT LOADING ARBOR
31	A42	BLANK (DO NOT USE BECAUSE OF CLEARANCE TO MOVIE SCREEN)	27'-8"	74'-0"	1	COUNTERWEIGHT	4'-0"	61'-0"	1,000	12"	8"	8	7'-8"	FRONT LOADING ARBOR
32	A43	DROP (BLACK)	28'-4"	74'-0"	1	COUNTERWEIGHT	4'-0"	61'-0"	1,000	12"	8"	8	7'-8"	FRONT LOADING ARBOR
X	A44	OBSTRUCTION	29'-0"											
33	A45	UTILITY	29'-8"	74'-0"	1	COUNTERWEIGHT	4'-0"	61'-0"	1,000	12"	8"	8	7'-8"	FRONT LOADING ARBOR
34	A46	UTILITY	30'-4"	74'-0"	1	COUNTERWEIGHT	4'-0"	61'-0"	1,000	12"	8"	8	7'-8"	FRONT LOADING ARBOR
35	A47	BORDER (BLACK)	31'-0"	74'-0"	1	COUNTERWEIGHT	4'-0"	61'-0"	1,000	12"	8"	8	7'-8"	FRONT LOADING ARBOR
36	A48	LEGS 3 (BLACK)	31'-8"	74'-0"	1	COUNTERWEIGHT	4'-0"	61'-0"	1,000	12"	8"	8	7'-8"	FRONT LOADING ARBOR
X	A49	BLANK SPACE (NOT USED)	32'-4"											
37	A50	5TH ELECTRIC	33'-0"	74'-0"	2	COUNTERWEIGHT	4'-0"	54'-6"	2,000	12"	8"	8	9'-9" TO 12'-0" (DEPENDING ON TYPE)	FRONT LOADING ARBOR
X	A51	OUTRIGGER PIPES OBSTRUCTION	33'-8"											
38	A52	UTILITY	34'-4"	74'-0"	1	COUNTERWEIGHT	4'-0"	61'-0"	1,000	12"	8"	8	7'-8"	FRONT LOADING ARBOR
39	A53	UTILITY	35'-0"	74'-0"	1	COUNTERWEIGHT	4'-0"	61'-0"	1,000	12"	8"	8	7'-8"	FRONT LOADING ARBOR
40	A54	UTILITY	35'-8"	74'-0"	1	COUNTERWEIGHT	4'-0"	61'-0"	1,000	12"	8"	8	7'-8"	FRONT LOADING ARBOR
41	A55	UTILITY	36'-4"	74'-0"	1	COUNTERWEIGHT	4'-0"	61'-0"	1,000	12"	8"	8	7'-8"	FRONT LOADING ARBOR
42	A56	CYC (BLUE)	37'-0"	74'-0"	1	COUNTERWEIGHT	4'-0"	61'-0"	1,000	12"	8"	8	7'-8"	TRADITIONAL ROD ARBOR
43	A57	SCRIM (WHITE)	37'-8"	74'-0"	1	COUNTERWEIGHT	4'-0"	61'-0"	1,000	12"	8"	8	7'-8"	FRONT LOADING ARBOR
44	A58	CYC (WHITE)	38'-4"	74'-0"	1	COUNTERWEIGHT	4'-0"	61'-0"	1,000	12"	8"	8	7'-8"	FRONT LOADING ARBOR
X	A59	BLANK SPACE (NOT USED)	39'-0"	74'-0"	1	COUNTERWEIGHT	4'-0"	61'-0"	1,000	12"	8"	8	7'-8"	FRONT LOADING ARBOR
45	A60	UPSTAGE TRAVELER (BLACK) (END OF HOUSE MARLEY FLOOT)	39'-8"											
46	A61	UTILITY	40'-4"	74'-0"	1	COUNTERWEIGHT	4'-0"	61'-0"	1,000	12"	8"	8	7'-8"	FRONT LOADING ARBOR
X	A62	BLANK SPACE (NOT USED)	41'-0"											
47	A63	UTILITY	41'-8"	74'-0"	1	COUNTERWEIGHT	4'-0"	61'-0"	1,000	12"	8"	8	7'-8"	FRONT LOADING ARBOR
X	A64	UTILITY OR NOT USED	42'-4"											
48	A65	BORDER (BLACK)	43'-0"	74'-0"	1	COUNTERWEIGHT	4'-0"	61'-0"	1,000	12"	8"	8	7'-8"	FRONT LOADING ARBOR
X	A66	OBSTRUCTION AT GRID	43'-8"											
49	A67	6TH ELECTRIC	44'-4"	74'-0"	2	COUNTERWEIGHT	4'-0"	54'-6"	2,000	12"	8"	8	9'-9" TO 12'-0" (DEPENDING ON TYPE)	FRONT LOADING ARBOR
X	A68	BLANK SPACE (NOT USED)	45'-0"											
50	A69	UTILITY	45'-8"	74'-0"	1	COUNTERWEIGHT	4'-0"	61'-0"	1,000	12"	8"	8	7'-8"	FRONT LOADING ARBOR
X	A70	OUTRIGGER PIPES OBSTRUCTION	46'-4"											
51	A71	BLACK OUT	47'-0"	74'-0"	1	COUNTERWEIGHT	4'-0"	61'-0"	1,000	12"	8"	8	7'-8"	FRONT LOADING ARBOR
X	A72	BLANK SPACE (NOT USED)	47'-8"											
X	A73	BLANK SPACE (NOT USED)	48'-4"											
X	A74	BLANK SPACE (NOT USED)	49'-0"											
		UPSTAGE WALL												

REVISION DATE

△	
△	
△	
△	
△	

DATE: 10 APRIL 2019

SCALE: AS NOTED

DRAWN BY:

APPROVED BY: KHC

PROJECT #: 1842.00

**RIGGING SCHEDULE 2**

01/29/2018

**TR103**

Federal copyright laws protect the intellectual property of designers by giving copyright protection to plans and designs. The use of these plans and specifications shall be restricted to the original site for which they were prepared and publication thereof is expressly limited to such use. Reproduction, publication, or reuse by any method, in whole or in part, is prohibited. Plans cannot be modified or redrawn without the copyright owner's written approval. Title to the plans and specifications remain with Schuler Shook without prejudice.

THIS DRAWING INDICATES GENERAL LAYOUT AND DESIGN OF STAGE AND LIGHTING SYSTEMS. REVIEW BY A QUALIFIED ENGINEER IS NECESSARY TO ASSURE SAFETY AND CODE COMPLIANCE.

**ROSA HART THEATRE**  
**REPAIR PROJECT - RIGGING**  
 900 Lakeshore Dr,  
 LAKE CHARLES, LA 70601

REVISION	DATE
▲	
▲	
▲	
▲	
▲	

DATE: 10 APRIL 2019

SCALE: AS NOTED

DRAWN BY:

APPROVED BY: KHC

PROJECT #: 1842.00

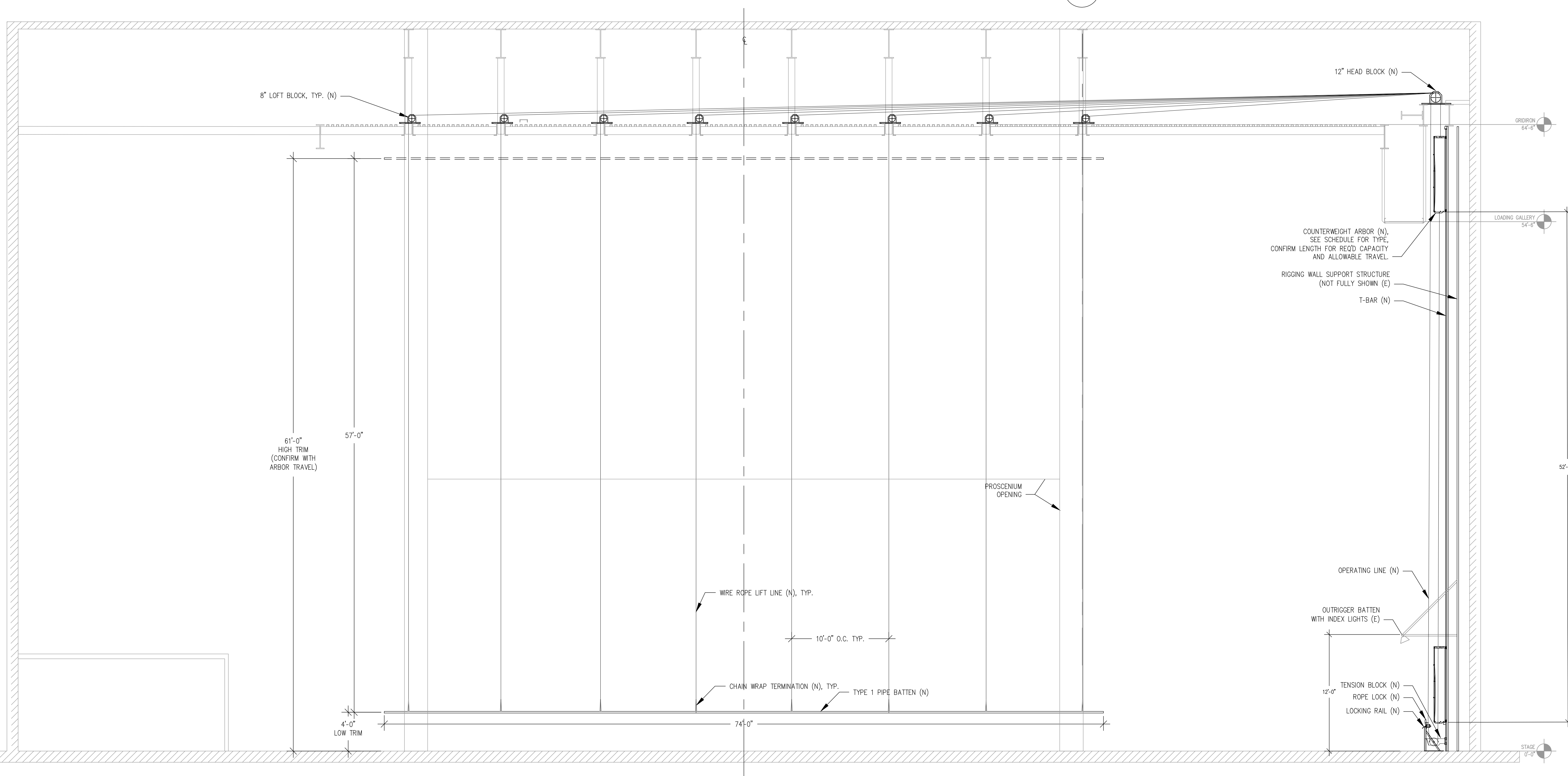
**UTILITY BATTEN ELEVATION**

01/29/2018

**TR201**



2 RIGGING WALL EXISTING WALL BATTEN PHOTO  
 SCALE: NTS



1 ELEVATION - UTILITY BATTEN (BATTEN TYPE 1)  
 SCALE: 3/16\"/>

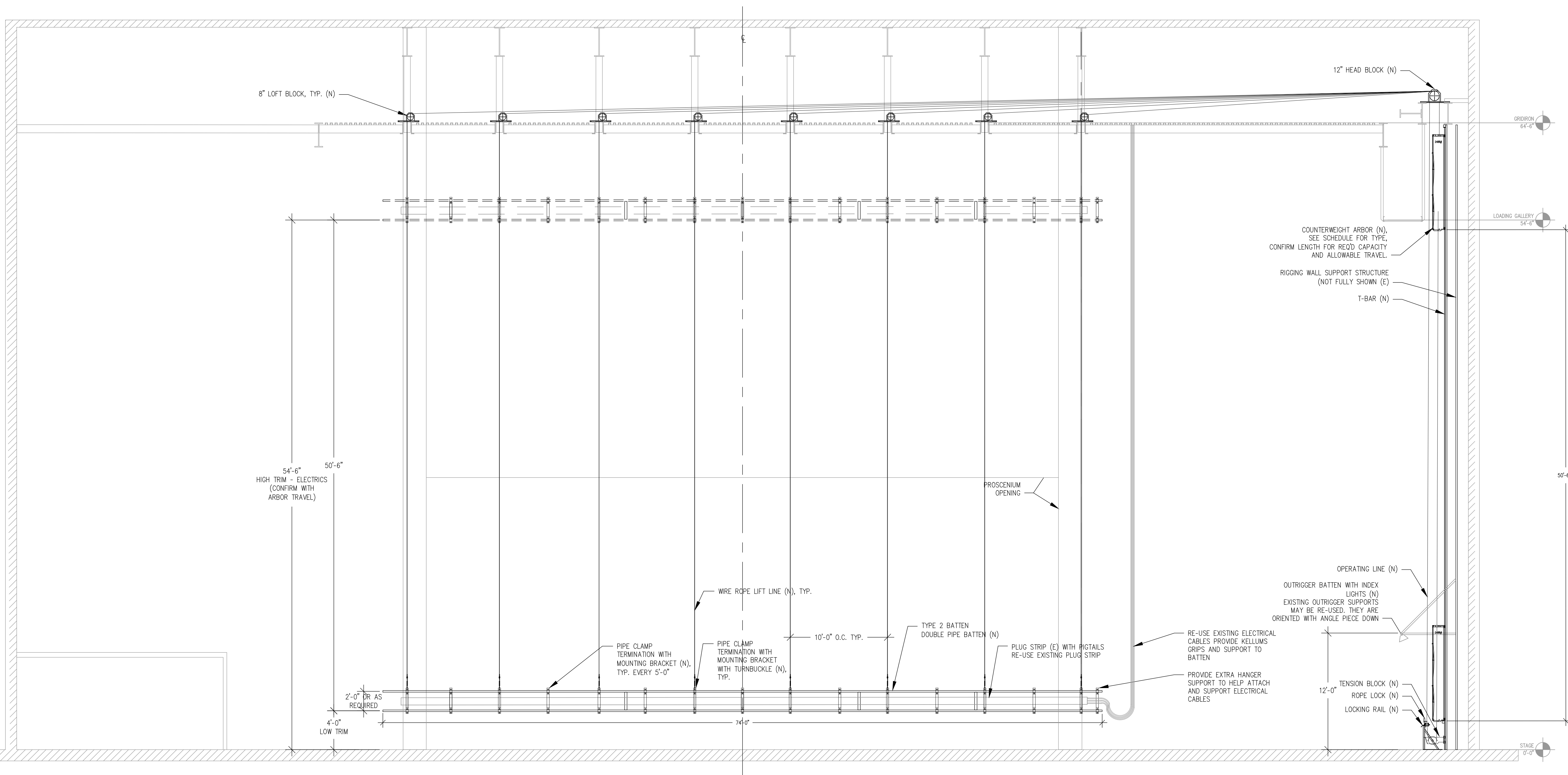
DRAWINGS ARE DIAGRAMMATIC. VERIFY ALL DIMENSIONS.

C:\Users\kconrad\Documents\Drawings\Lake Charles LA-1842\Drawings\CD\TR-xx\_200303-Rev2-Bound.dwg, 5/5/2020 12:57:49 PM

Federal copyright laws protect the intellectual property of designers by giving copyright protection to plans and designs. The use of these plans and specifications shall be restricted to the original site for which they were prepared and publication thereof is expressly limited to such use. Reproduction, publication, or reuse by any method, in whole or in part, is prohibited. Plans cannot be modified or redrawn without the copyright owner's written approval. Title to the plans and specifications remain with Schuler Shook without prejudice.

THIS DRAWING INDICATES GENERAL LAYOUT AND DESIGN OF STAGE AND LIGHTING SYSTEMS. REVIEW BY A QUALIFIED ENGINEER IS NECESSARY TO ASSURE SAFETY AND CODE COMPLIANCE.

**ROSA HART THEATRE**  
**REPAIR PROJECT - RIGGING**  
 900 Lakeshore Dr,  
 LAKE CHARLES, LA 70601



REVISION DATE

REVISION	DATE
△	
△	
△	
△	
△	

DATE: 10 APRIL 2019

SCALE: AS NOTED

DRAWN BY:

APPROVED BY: KHC

PROJECT #: 1842.00

ELECTRIC  
 ELEVATION

01/29/2018

TR202

1 ELEVATION - ELECTRIC BATTEN (TYP.)  
 SCALE: 3/16" = 1'-0"

DRAWINGS ARE DIAGRAMMATIC. VERIFY ALL DIMENSIONS.

Federal copyright laws protect the intellectual property of designers by giving copyright protection to plans and designs. The use of these plans and specifications shall be restricted to the original site for which they were prepared and publication thereof is expressly limited to such use. Reproduction, publication, or reuse by any method, in whole or in part, is prohibited. Plans cannot be modified or redrawn without the copyright owner's written approval. Title to the plans and specifications remain with Schuler Shook without prejudice.

THIS DRAWING INDICATES GENERAL LAYOUT AND DESIGN OF STAGE AND LIGHTING SYSTEMS. REVIEW BY A QUALIFIED ENGINEER IS NECESSARY TO ASSURE SAFETY AND CODE COMPLIANCE.

**ROSA HART THEATRE**  
**REPAIR PROJECT - RIGGING**  
 900 Lakeshore Dr,  
 LAKE CHARLES, LA 70601

REVISION	DATE
▲	
▲	
▲	
▲	
▲	

DATE: 10 APRIL 2019

SCALE: AS NOTED

DRAWN BY:

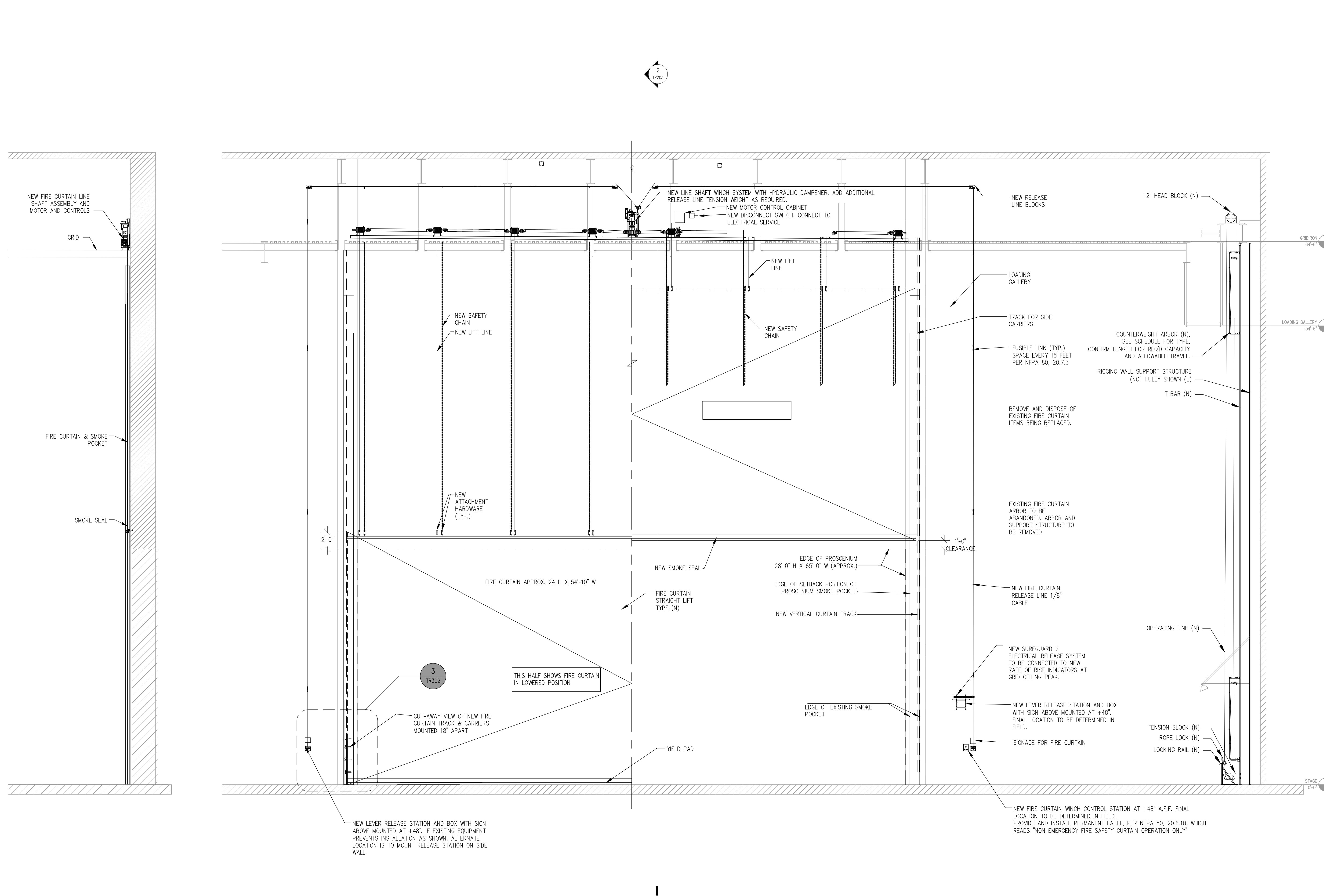
APPROVED BY: KHC

PROJECT #: 1842.00

FIRE CURTAIN

01/29/2018

TR203



Federal copyright laws protect the intellectual property of designers by giving copyright protection to plans and designs. The use of these plans and specifications shall be restricted to the original site for which they were prepared and publication thereof is expressly limited to such use. Reproduction, publication, or reuse by any method, in whole or in part, is prohibited. Plans cannot be modified or redrawn without the copyright owner's written approval. Title to the plans and specifications remain with Schuler Shook without prejudice.

THIS DRAWING INDICATES GENERAL LAYOUT AND DESIGN OF STAGE AND LIGHTING SYSTEMS. REVIEW BY A QUALIFIED ENGINEER IS NECESSARY TO ASSURE SAFETY AND CODE COMPLIANCE.

**ROSA HART THEATRE**  
**REPAIR PROJECT - RIGGING**  
 900 Lakeshore Dr,  
 LAKE CHARLES, LA 70601

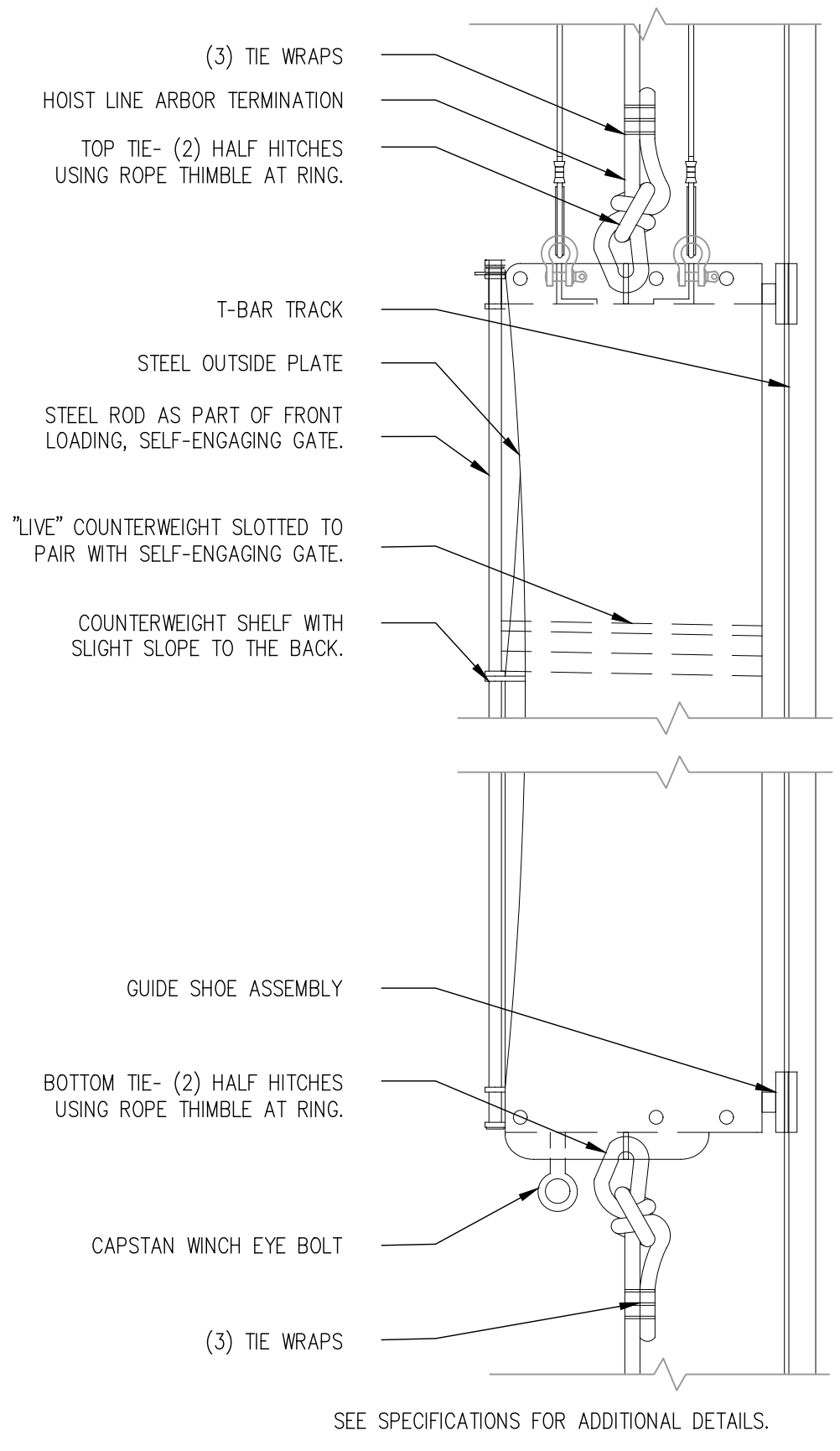
REVISION	DATE
△	
△	
△	
△	
△	

DATE: 10 APRIL 2019  
 SCALE: AS NOTED  
 DRAWN BY:  
 APPROVED BY: KHC  
 PROJECT #: 1842.00

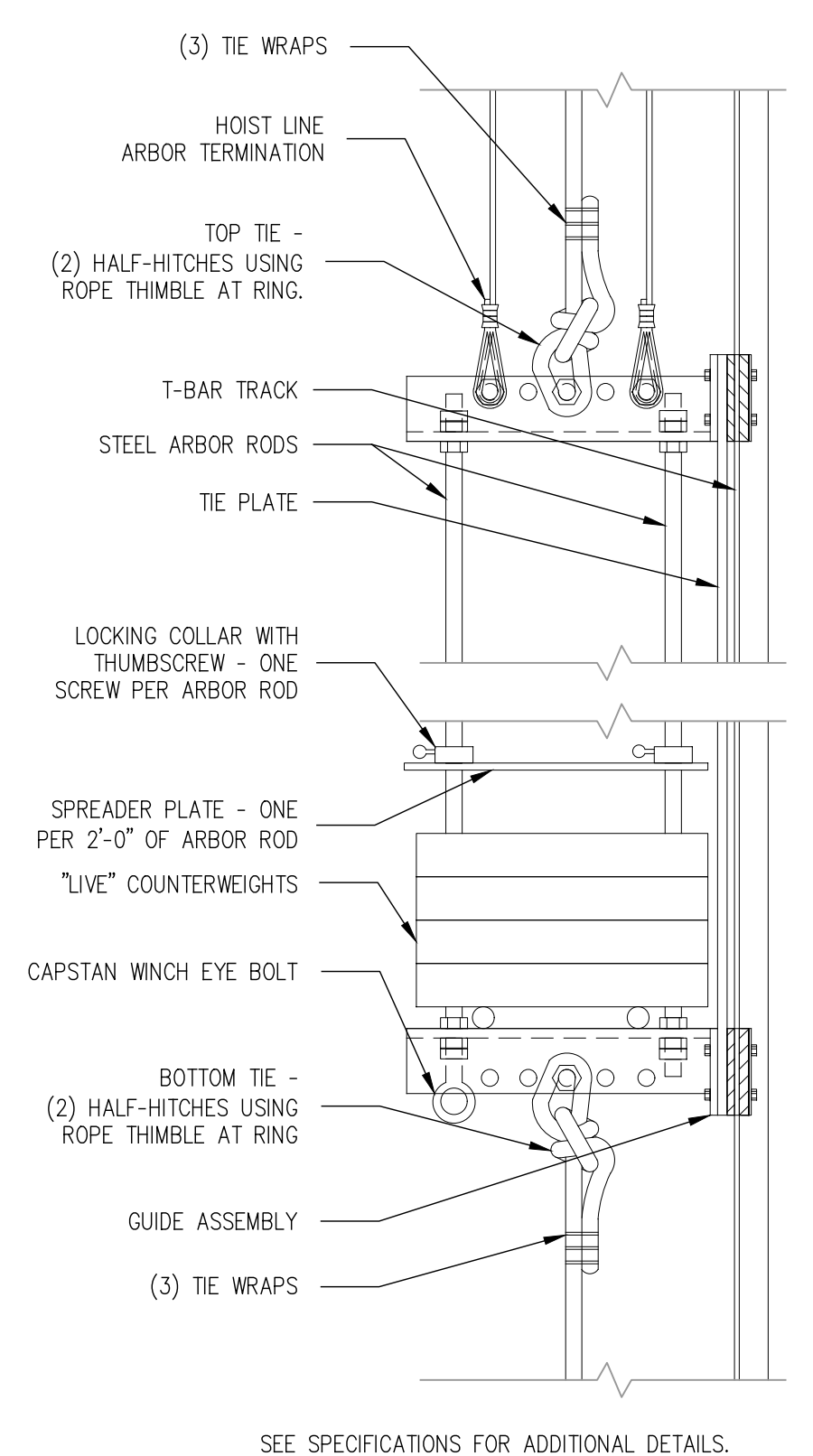
RIGGING  
 DETAILS

01/29/2018

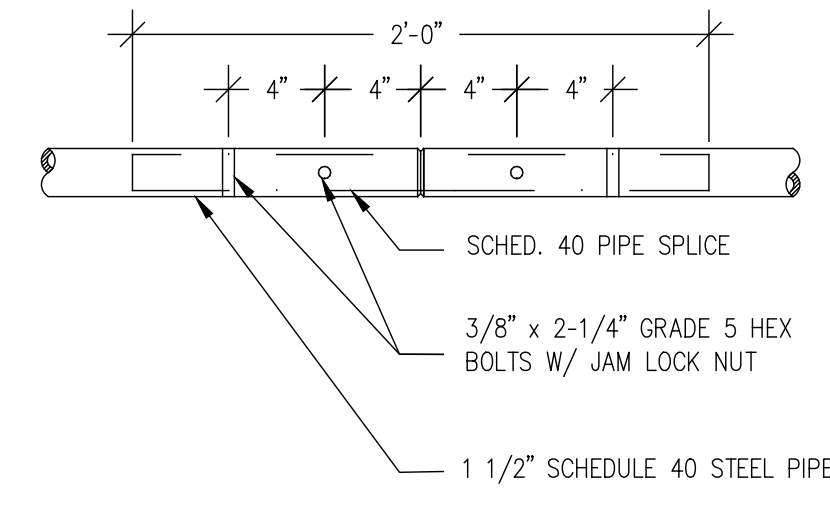
TR301



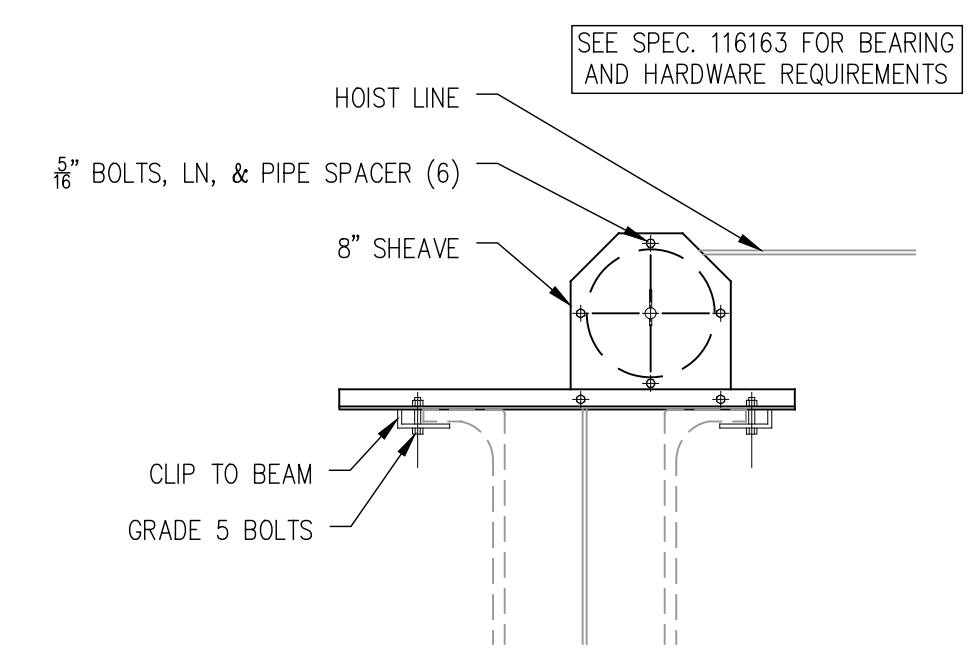
8 DETAIL - FRONT LOADING ARBOR  
 SCALE: 1-1/2" = 1'-0"



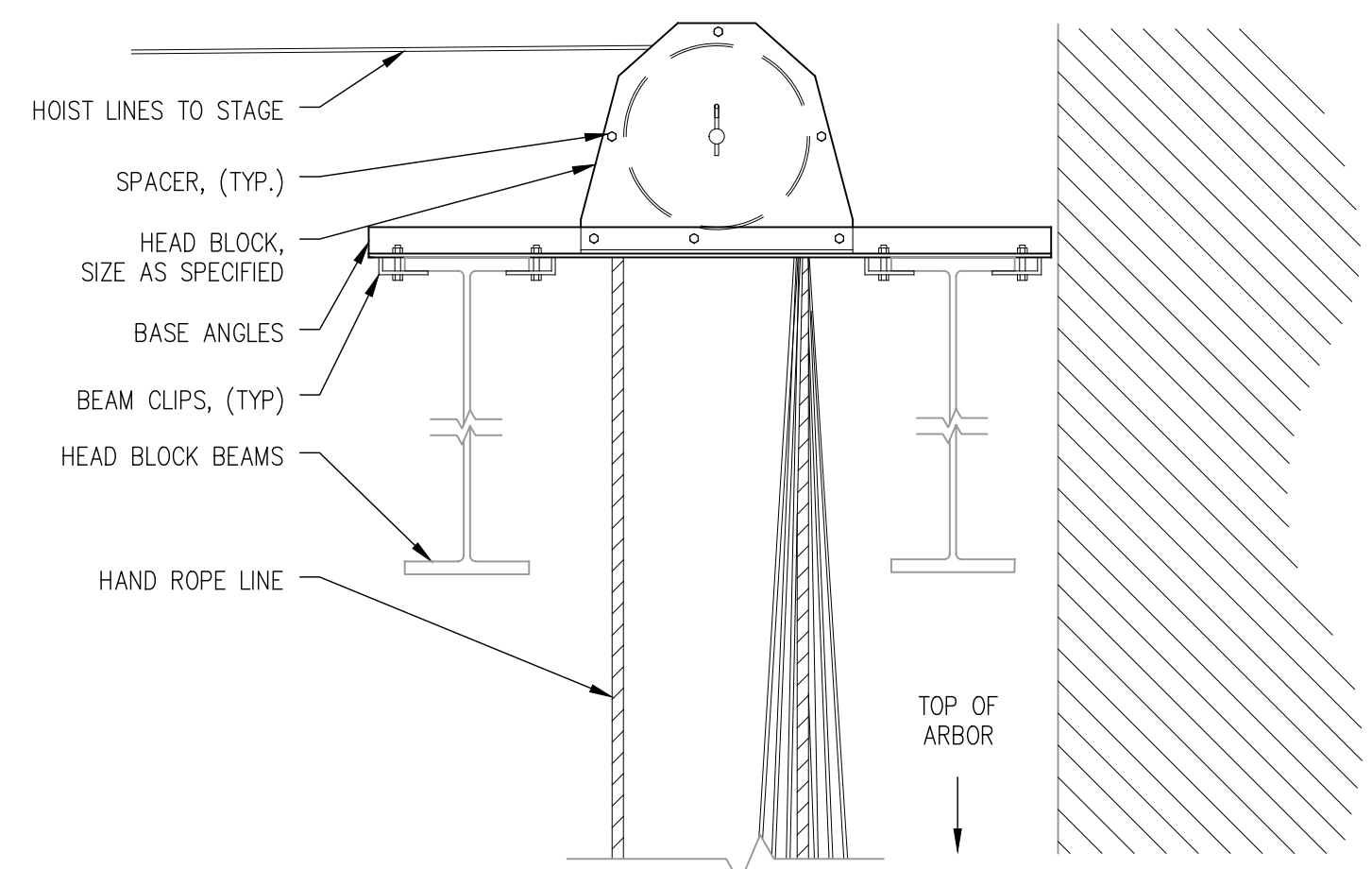
7 DETAIL - ROD ARBOR  
 SCALE: 1-1/2" = 1'-0"



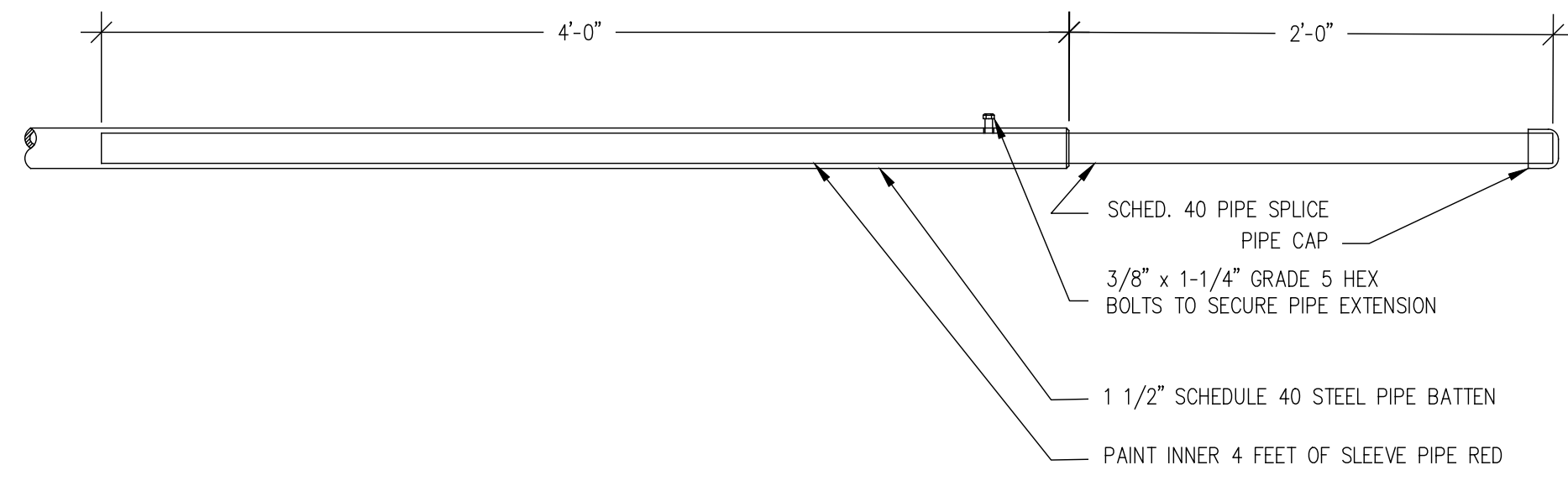
6 DETAIL - BATTEN SPLICE  
 SCALE: 1-1/2" = 1'-0"



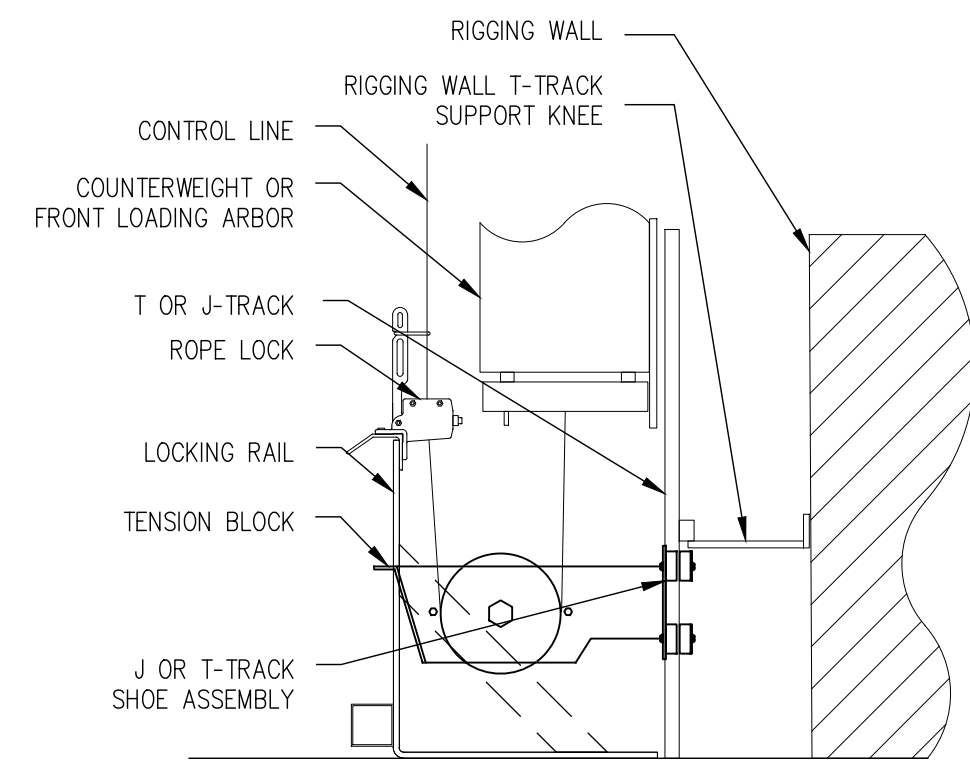
5 DETAIL - LOFT BLOCK  
 SCALE: 1" = 1'-0"



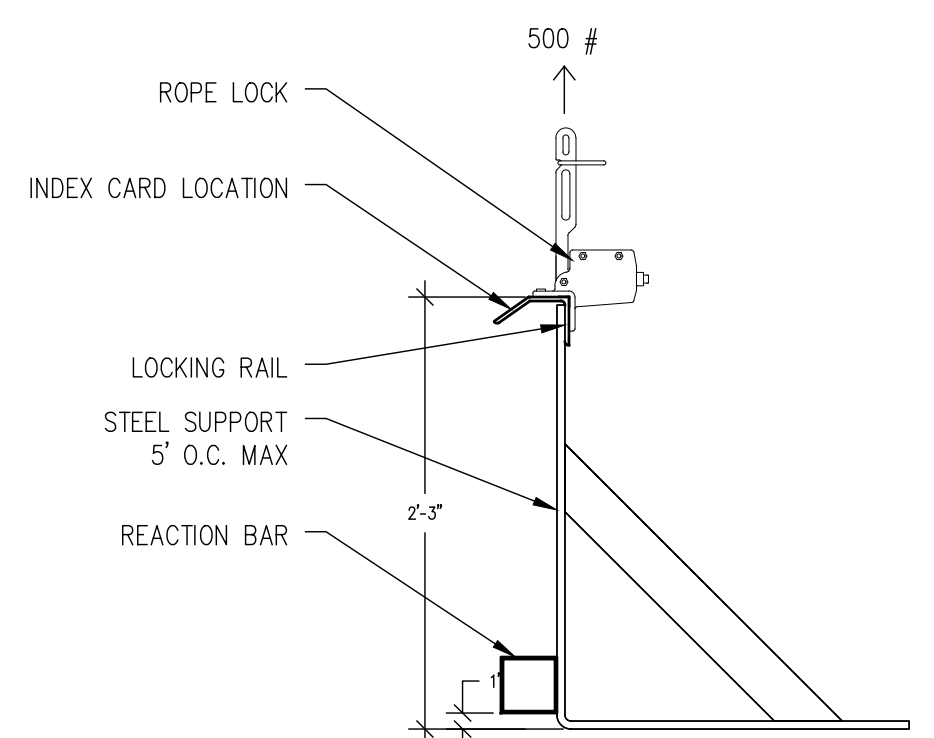
4 DETAIL - HEAD BLOCK  
 SCALE: 1" = 1'-0"



3 DETAIL - PIPE BATTEN EXTENSION  
 SCALE: 1" = 1'-0"



2 DETAIL - TENSION BLOCK  
 SCALE: 3/4" = 1'-0"



1 DETAIL - LOCKING RAIL  
 SCALE: 1" = 1'-0"

C:\Users\kcomrad\Documents\Dallas T-1\JOBS O-R\Rosa Hart Theatre Rigging Renovation-Lake Charles LA-1842\Drawings\CD\TR-xx\_200303-Rev2-Bound.dwg, 5/15/2020 12:58:05 PM



Federal copyright laws protect the intellectual property of designers by giving copyright protection to plans and designs. The use of these plans and specifications shall be restricted to the original site for which they were prepared and publication thereof is expressly limited to such use. Reproduction, publication, or reuse by any method, in whole or in part, is prohibited. Plans cannot be modified or redrawn without the copyright owner's written approval. Title to the plans and specifications remain with Schuler Shook without prejudice.

THIS DRAWING INDICATES GENERAL LAYOUT AND DESIGN OF STAGE AND LIGHTING SYSTEMS. REVIEW BY A QUALIFIED ENGINEER IS NECESSARY TO ASSURE SAFETY AND CODE COMPLIANCE.

**ROSA HART THEATRE**  
**REPAIR PROJECT - RIGGING**  
**900 Lakeshore Dr,**  
**LAKE CHARLES, LA 70601**

REVISION DATE


DATE: 10 APRIL 2019

SCALE: AS NOTED

DRAWN BY:

APPROVED BY: KHC

PROJECT #: 1842.00

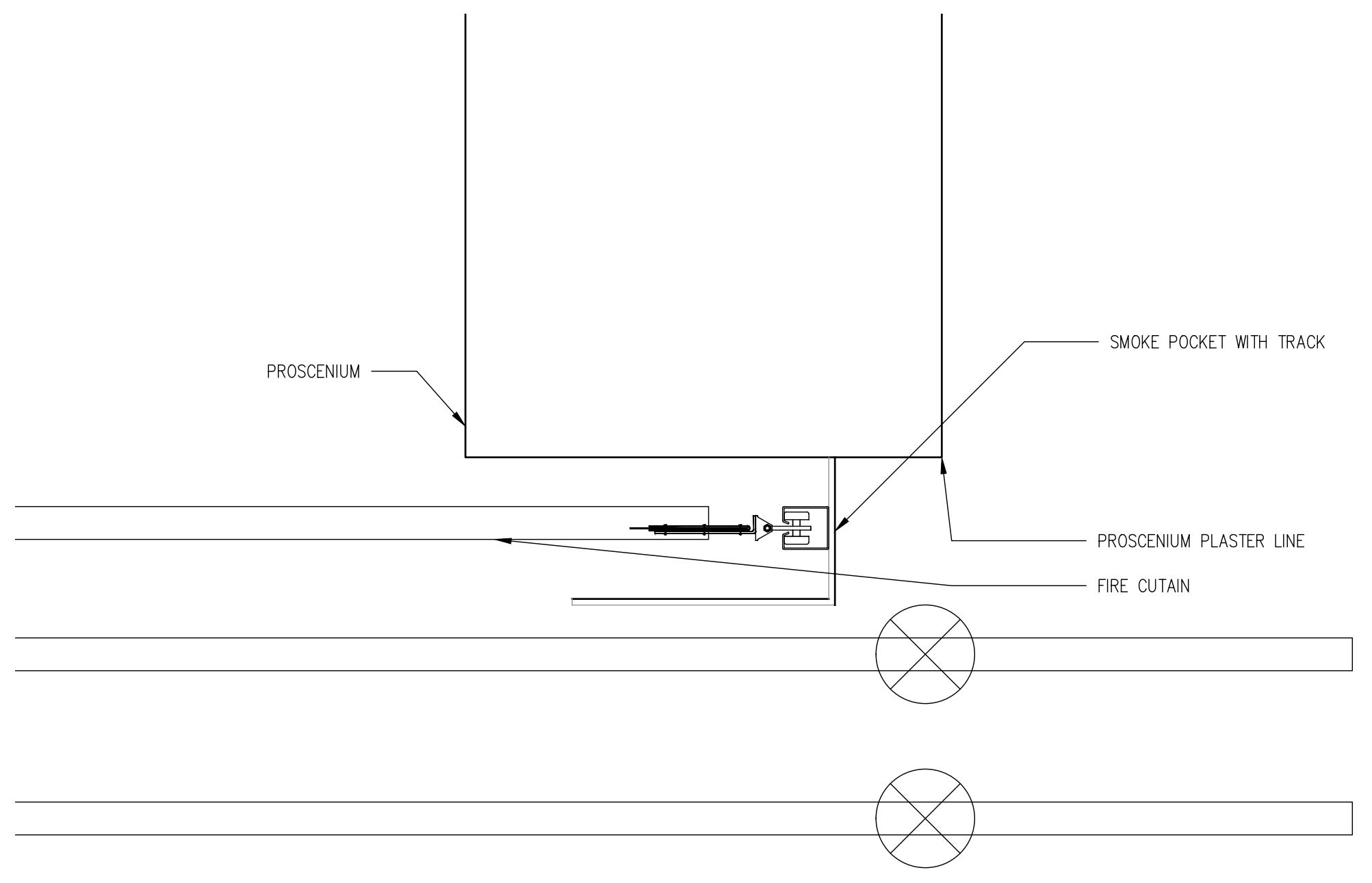
**RIGGING - FIRE CURTAIN DETAILS**

01/29/2018

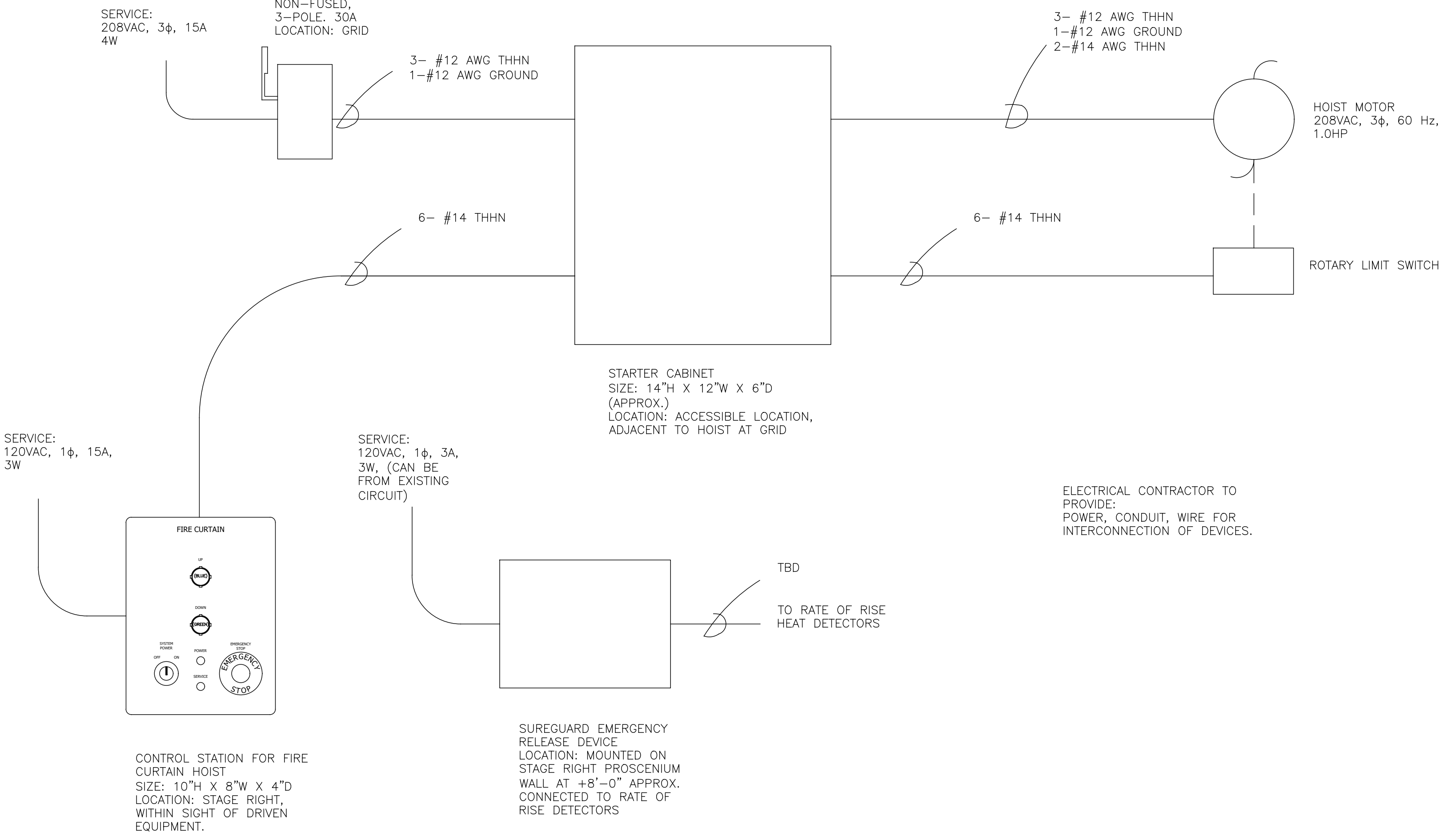
**TR302**

ELECTRICAL CONTRACTOR / INSTALLER NOTES:  
 PROVIDE RATE OF RISE HEAT DETECTORS, RANGE AS SPECIFIED BY NFPA 80, AND COMPATIBLE WITH BUILDING ALARM SYSTEM AND SUREGUARD (PROVIDED BY FIRE CURTAIN INSTALLER). PROVIDE COMPONENTS AND CONNECTED TO SUREGUARD. ARRANGE COMMISSIONING AND TESTING. COORDINATE DEVICE AND CONDUIT INSTALLATION WITH THE RIGGING CONTRACTOR. (PROVIDE OWNER WITH INFORMATION TO CONNECT TO BUILDING ALARM.)

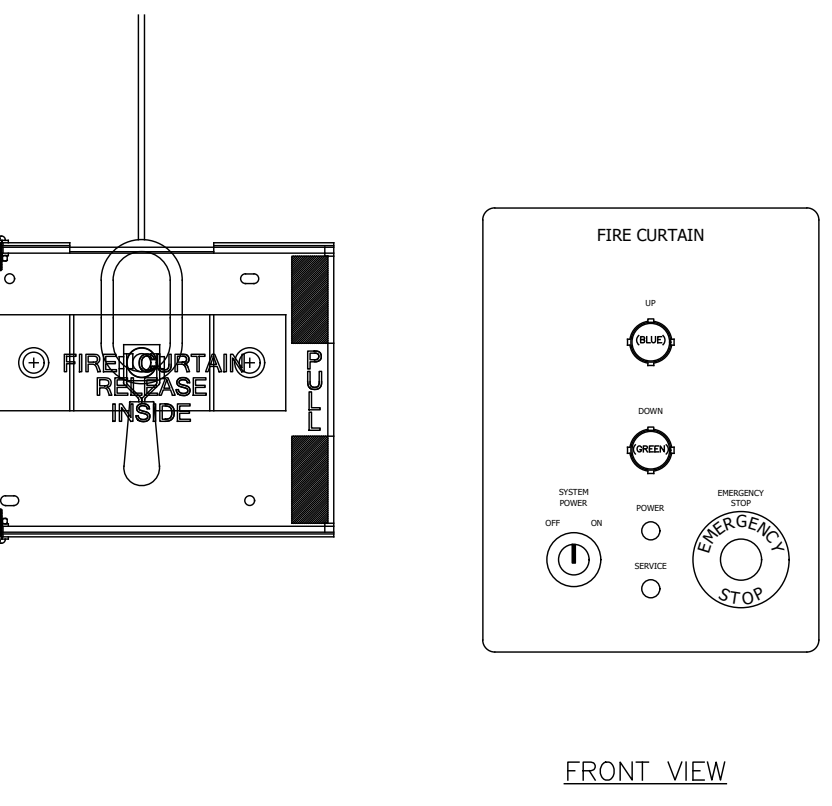
- ELECTRICAL NOTES:
1. PROVIDE ONE 200, 208V, 3 WIRE CIRCUIT FROM EXISTING PANELBOARD, TO A GRID LOCATION DESIGNATED BY THE FIRE CURTAIN INSTALLER AND CONNECTED TO A NON-FUSED DISCONNECT: 3-#12 EMT, 3/2" = #12 GROUND.
  2. PROVIDE ONE 30A, 3-POLE, 250V NON-FUSED DISCONNECT, NEMA 1 ENCLOSURE, AT THE GRID ADJACENT TO THE FIRE CURTAIN EQUIPMENT. VERIFY LOCATION WITH RIGGING INSTALLER.
  3. PROVIDE ONE 20A, 3-POLE CIRCUIT BREAKER FOR THE NEW CIRCUIT AT THE PANELBOARD.
  4. PROVIDE ON 3/2" EMT CONTROL CONDUIT FROM THE GRID CONTROL PANEL TO THE WINCH CONTROL STATION ON THE STAGE RIGHT WALL. (CONDUCTOR SIZE BY FIRE CURTAIN INSTALLER.)



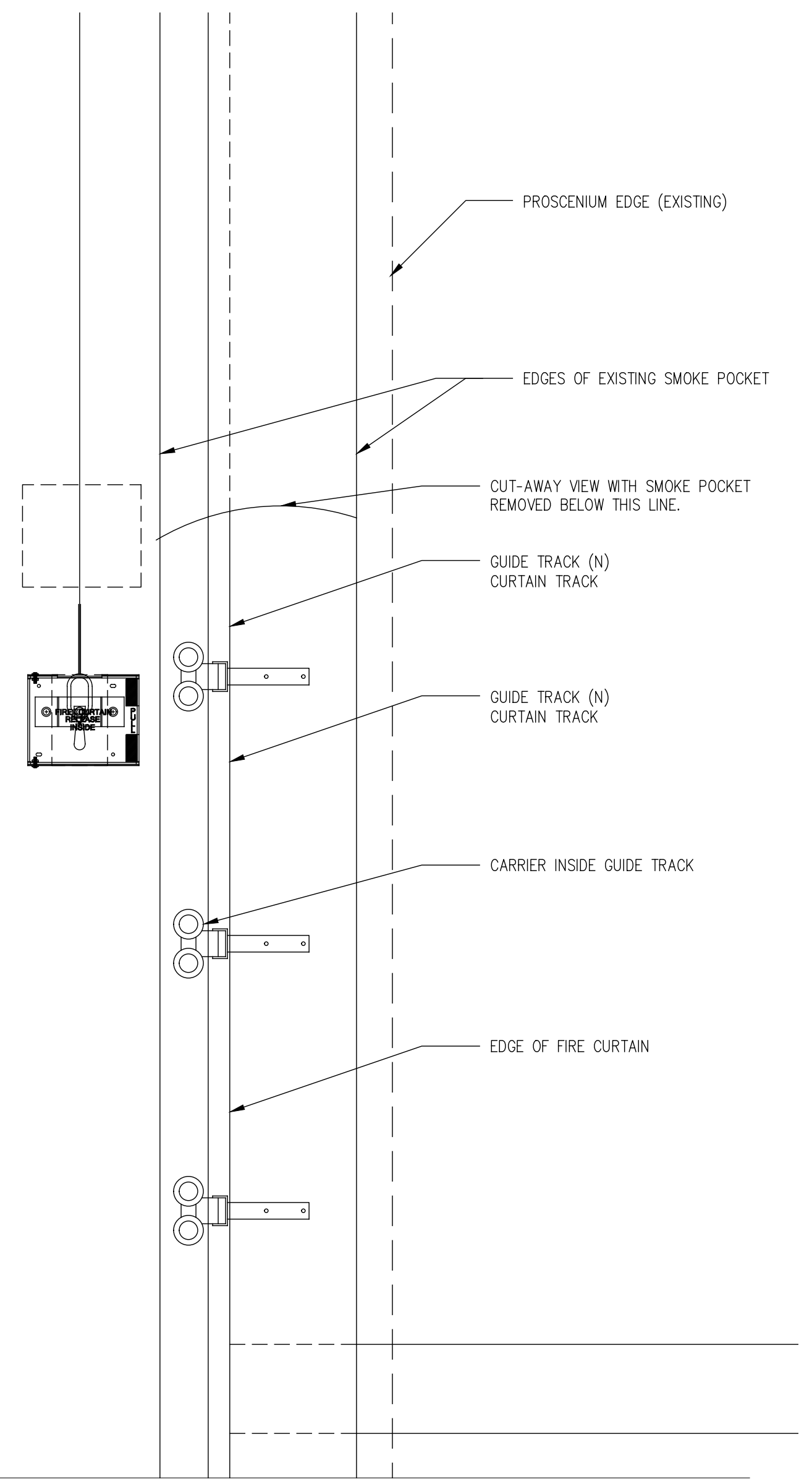
**6 PLAN OF SMOKE POCKET - STAGE RIGHT**  
 SCALE: 1-1/2" = 1'-0"



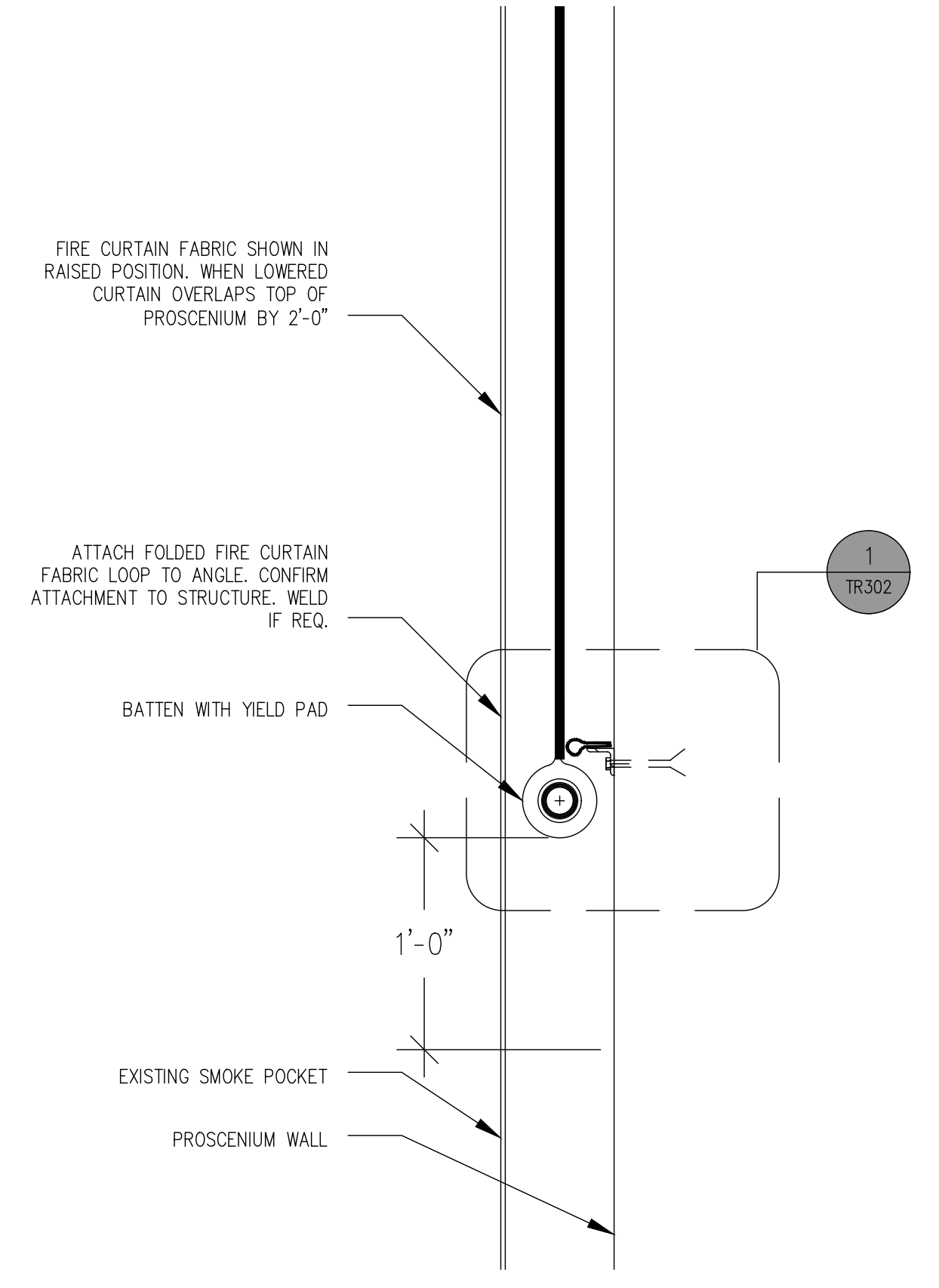
**5 FIRE CURTAIN POWER AND CONTROL RISER**  
 SCALE: NTS



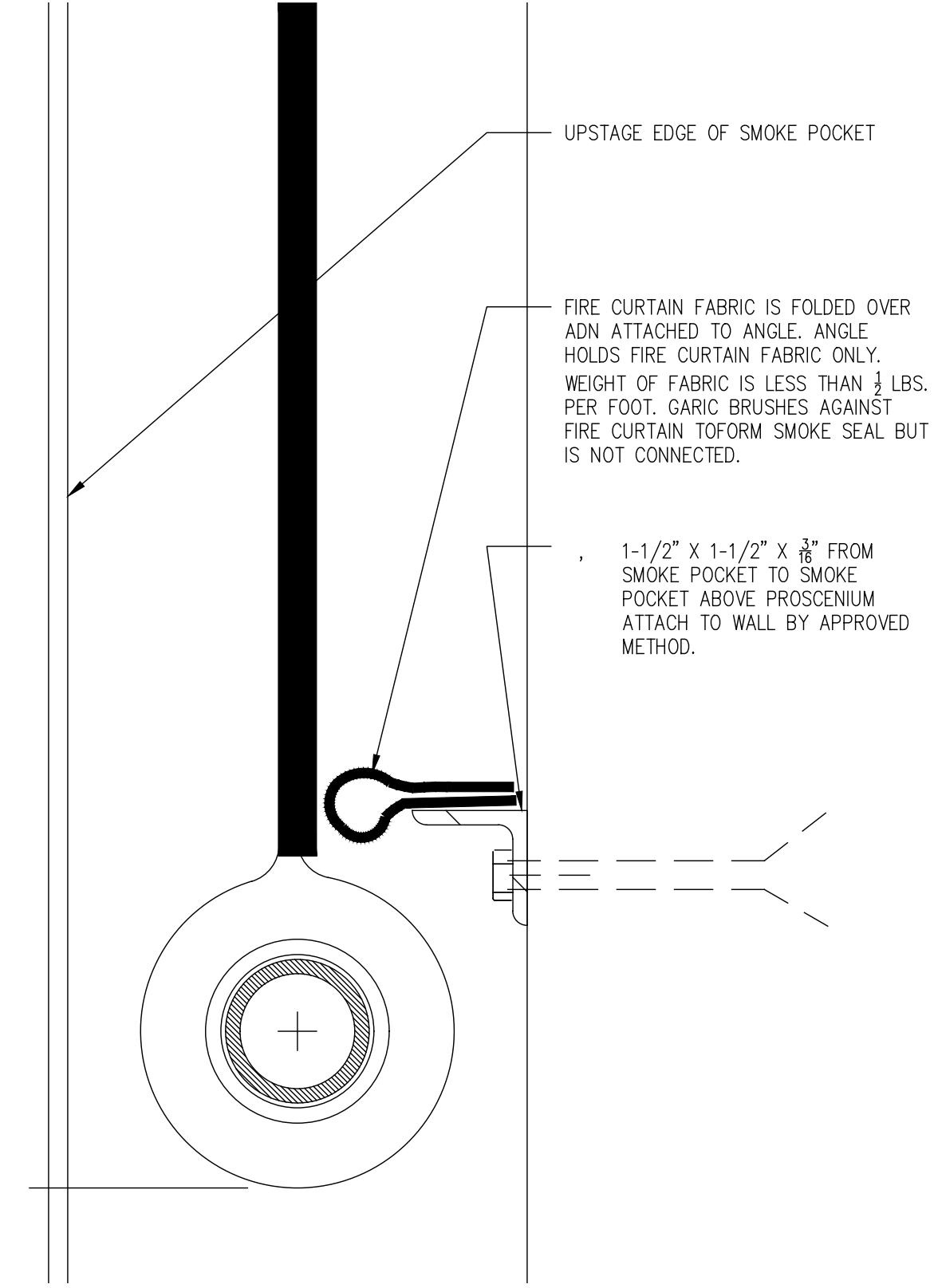
**4 RELEASE LEVER AND WINCH CONTROL STATION**  
 SCALE: 3" = 1'-0"



**3 CUT-AWAY ELEVATION OF SMOKE POCKET**  
 SCALE: 1-1/2" = 1'-0"



**2 SMOKE SEAL DETAIL**  
 SCALE: 1 1/2" = 1'-0"



**1 DETAIL - SMOKE SEAL**  
 SCALE: 6" = 1'-0"