



PRESENTS

CATCH A DREAM  
FOUNDATION



Bass Classic



• **May 3, 2015** •  
**Ross Barnett Reservoir**

# A SPECIAL THANK YOU

Thanks to the sponsors and anglers in the  
5th Annual Catch-A-Dream Foundation Bass Classic.

## CATCH • A • DREAM FOUNDATION BOARD OF DIRECTORS

### Life Members

Peggy Brady Pierce  
Bruce Brady, Jr.  
Dr. Marty Brunson  
Jimmy Bullock  
Darrell Daigre

### Term Members

Philip Barrett  
Cliff Covington  
Bill Sugg  
Harry Dendy

### Associate Members

Johnny Morris  
Sammy Slaughter

## Reminders

- Be sure your boat is ready when you approach the ramp.
- Stay with your lot; no crossovers.
- Do not block the ramp.
- Turn your lights off.
- Moor your boat in the assigned mooring area.
- Show your boat number card at blast-off.
- Turn in your boat number card at weigh-in.

## Weigh-In Times

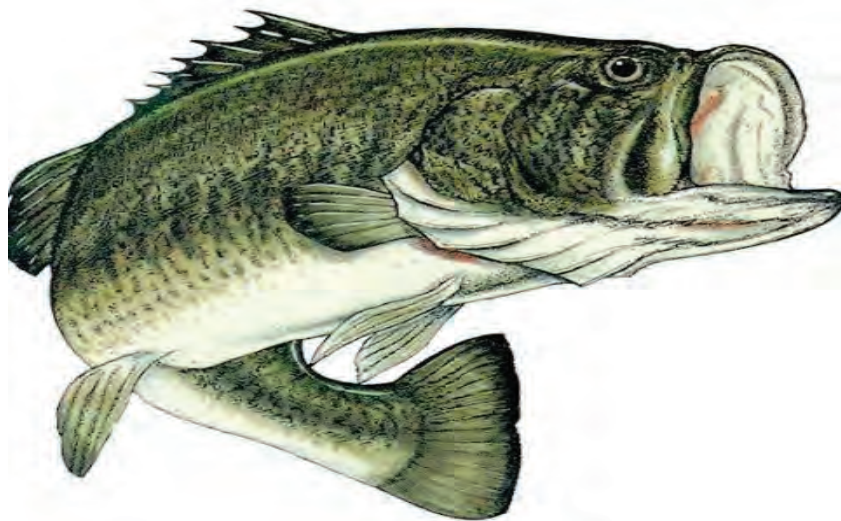
BOATS	WEIGH-IN TIME
1 — 50	3:00 p.m.
51 — 100	3:15 p.m.
101 — 150	3:30 p.m.
151 — 200	3:45 p.m.
201 — 250	4:00 p.m.
251 — 300	4:15 p.m.

**BEST WISHES**  
to  
**Catch-A-Dream**  
for  
**A HIGHLY SUCCESSFUL**  
**2015 Bass Classic**

From



In emergencies, dial 911.



***C G M Bass Tournaments***  
***David & Charlotte Mace***  
***601-750-4157 or 601-750-4158***  
**[www.cgmbasstournaments.com](http://www.cgmbasstournaments.com)**

# RULES AND REGULATIONS

- 1. RULES:** The following rules of this Tournament will remain unchanged. Interpretation of these rules shall be left exclusively to the Tournament Rules Committee. The decision of the judges and tournament officials shall be final in all matters.
- 2. PARTICIPANTS AND ELIGIBILITY:** ALL contestants must have a valid Mississippi fishing license. Must be 16 years of age or older unless fishing with parent or guardian (Grandparent, etc.) OR as an entrant in the Buddy Division, and must be accompanied by adult to registration. Proof of age to the satisfaction of tournament officials is responsibility of prospective competitor. A properly completed and signed official application form and the \$125.00 early bird entry fee **MUST BE POST MARKED or submitted on-line by April 24, 2015**. All entries post marked or submitted on-line after this date will be \$150.00 (see tournament schedule). **TAKE OFF NUMBERS WILL BE ASSIGNED IN THE ORDER THAT REGISTRATION AND PAYMENT IS RECEIVED.** "Safety" Teams must consist of two members of a Fire and or Law Enforcement Agency or retired from such. Proof will be required. "Buddy" teams must consist of one adult and one youth under the age of sixteen (16) on the date of the tournament. "Couples" teams must consist of two (2) adults (age 16 or over), one (1) male and one (1) female. The Tournament Committee reserves the right to discontinue acceptance of applications prior to the deadline and also the right to extend the acceptance date. Refund of entrance fee will be made only if PROPER notification is made prior to the deadline. .
- 3. REGISTRATION:** A Representative from each team must register in person at the time and place prescribed on the schedule of events. Tournament officials shall present all tournament credentials at that time. Registration will be limited to the first 300 boats.
- 4. SAFETY:** Safe boating conduct must be observed at all times by all tournament competitors. Caution and safety on the morning start must be observed. Each competitor is required to wear a Coast Guard approved chest-type life preserver. This preserver must be worn at any time the combustion engine is operating. The preserver must be strapped, snapped or zippered securely and maintained in that condition until the competitor reaches his fishing location and the combustion engine is shut off. Violation of this rule shall be reason for immediate disqualification.
- 5. SPORTSMANSHIP:** Competitors are expected to follow high standards of sportsmanship, courtesy, safety and conservation. Maximum courtesy must be practiced at all times, especially with regard to boating and angling in the vicinity of non-competitors who may be on tournament waters. Drunkenness by any competitor during the tournament will not be tolerated and shall be cause for automatic disqualification from this tournament. No alcoholic beverages or drugs other than prescription shall be allowed in the boats or at the weigh-in. Having a non-contestant sit on a hole for you will not be tolerated. Cell phones and other electronic communication devices cannot be used by competitors for the purpose of locating or catching fish during tournament hours. Any infraction of these fundamental sporting principles may be deemed cause for disqualification. All contestants must obey all Mississippi game laws and Ross Barnett Reservoir rules at all times (No Wake Zones, etc.) Any citation will be grounds for disqualification.
- 6. TACKLE AND EQUIPMENT:** Only artificial lures may be used. No "live bait" or "prepared bait" will be permitted, with the exception of pork strips, rinds, etc. Only ONE casting, spincasting or spinning rod and reel may be used at any one time. All other types prohibited. Other rigs as specified above may be in boat ready to use, however, only ONE is permitted in use at any given time. All bass must be caught live and in a conventional sporting manner.
- 7. BOAT AND MOTOR:** ALL BOATS MUST BE EQUIPPED WITH SOME TYPE OF IGNITION KILL SWITCH. Fishing boats may be used that are 14 feet or more in length. Any motor, 10 horsepower or greater, may be used. A smaller motor, gas or electric, may be used for slow maneuvering. Trolling as a method of fishing is prohibited.
- 8. BASIC BOAT EQUIPMENT:** Every boat must have all required Coast Guard safety equipment. The horsepower of the outboard engine must not exceed the U.S. Coast Guard rating for the individual boat.
- 9. BOAT IDENTIFICATION:** Each boat will be given, prior to day's start, a colored ribbon that **MUST** remain on your boat until the weigh-in **AND** a Boat Number ID card. The ribbon must be displayed on the boat at all times during the tournament, and the ID card must be turned in at weigh-in.
- 10. PERMITTED FISHING LOCATIONS:** Fishing on the tournament waters is permitted anywhere except within 50 yards of another competitor's boat which was first anchored. No such anchored boat shall permit selected competitors to fish within the 50-yard circle claimed by him, to the exclusion of any other competitor. All angling must be done from boat. Contestant must not depart boat to land fish. Boat must remain in tournament waters during tournament day. Contestants must leave and return to official checkpoint by boat. Both competitors must remain in boat at all times except in case of dire emergency. Trailering of boats during tournament hours is prohibited, unless tournament officials are notified and boat is checked before it is removed from the lake and again before it is re-launched and a new ribbon is issued.
- 11. OFFICIAL CHECKPOINT:** There shall be only one official point for checkout in the morning, and check-in that afternoon and this point shall be designated at the registration. At the time of checkout, all competitors and their boats shall be in full conformance with all rules set forth by Tournament Committee and must take off in numerical order and be recognized by launch master or the days catch will not be counted; at check-in, all boats shall identify themselves by means of a number and proceed immediately to the designated weigh-in area.
- 12. SCORING:** Tournament standings, auxiliary awards and final winners shall be determined by the pound and ounce weight of each competitor's catch during the tournament. Only Largemouth or Spotted Bass will be weighed. The limit shall be 5 of the above species and varieties. At no time shall a competitor have more than the limit described above. Tournament officials will conduct checks for violation of this provision, and in the event a competitor has reduced more than the above-described limits to possession, shall cull the largest bass first, down to the limit described. Only bass as described above which measure 12 inches or longer shall be presented for weigh-in. Bass presented for weigh-in which fail to measure 12 inches shall accrue penalties. Bass presented for weigh-in which fail to measure 12 inches shall accrue penalties at the rate of one pound for each bass and the loss of that fish. Any bass that appears to have been mangled, mashed, mauled or otherwise altered will be weighed and credited only at the discretion of tournament officials. There will be a 4 oz. penalty for each dead fish weighed in.
- 13. LATE PENALTY:** Competitors who are not in the official checkpoint area as described in Rule 11 at the appointed time shall be penalized 1 pound of the total weight of his catch, including any weight to be counted toward a "lunker award," for each one (1) minute he is late. Any competitor more than 15 minutes late shall lose all credit for that day's catch. There will be no excuse for tardiness, and in no case shall a competitor be allowed to make up "lost time." After proper recognition at the check-in point, competitors will be allowed ample time to proceed to the weigh-in site; however, all fishing must cease upon check-in. After tournament begins, fishing is prohibited except during tournament hours. Exact starting and check-in time will be announced at the registration.
- 14. TIES:** A Tie will be decided at the discretion of the Tournament Committee. The presentation of trophy or plaque shall be decided by a flip of the coin.
- 15. CARE OF FISH:** Fish should be kept in good condition in live-wells in those boats so equipped. All live fish deemed in good condition will be returned to the lake. All others will be donated as selected by tournament officials.
- 16. PROTESTS:** All protests must be submitted in writing to tournament officials before the scales are closed.
- 17. POLYGRAPH:** All contestants, winners and non-winners are subject to a polygraph test. The results of said polygraph will be final and grounds for disqualification. Failure to submit to a polygraph test will result in immediate disqualification.
- 18. OBSERVERS:** The tournament committee shall reserve the right to place an observer in any competitor's boat during tournament hours for any reason and without explanation.

# REMINDERS

## Bass Classic Text Alerts

Keep up with what's happening as the tournament approaches and catch the latest weights each hour during the **Lucky Cast** contest via text messaging. Simply subscribe to **Bass Classic Text Alerts** and you'll stay informed! We will use this as the official communication method during the tournament not only for **Lucky Cast**, but also for other safety/emergency or communication needs.

To Subscribe: Send a text message to 95577 and enter the keyword CATCH. It's easy and it's FREE!

## Special Divisions

1. **Buddy Team Division** – Teams must consist of 1 adult and 1 youth under the age of 16 (as of tournament day.) Gender does not matter in this division.
2. **Couples Team Division** – Teams must consist of 1 adult male and 1 adult female.
3. **Safety Team Sidepot** – This has been renamed to **Safety Team Division**.
4. A team may enter only **ONE** of the three special divisions.

## Boat Number Cards

Each boat is issued a laminated Boat Number Card to be displayed at Blast-off and returned at Weigh-in.



# LUCKY CAST BIG BASS CONTEST

The **Lucky Cast Big Bass Contest** is back! ONE LUCKY CAST could land you some big bucks. **Lucky Cast** “levels the playing field” and makes it possible for ANYONE to take home extra cash and prizes without having to outfish the “big boys and girls” for the Overall top weights. It is SIMPLE – the largest fish weighed in each period wins, so YOU may be the lucky boat with the biggest fish during any given 2-hour period; or maybe for all 3 time periods!

- Official time periods are: Blast-off - 8 am; 8 am – 10:00 am; 10:00 am – noon.
- Fish may be weighed in at any time during the 2 hour periods, but must be weighed prior to the end of the respective time period.
- Boats submitting fish may return to the lake to continue fishing until final weigh-in time.
- Any fish checked in will automatically count toward the weigh-in total (limit 5 fish) for the respective boat at the end of the day, and is immediately returned to the lake by Staff.
- Boats may enter only 1 fish during each 2-hour period, but are eligible to win in more than 1 time period. An individual fish may be weighed only once, and will be entered into the competition for the time period in which it is weighed.
- Anglers can subscribe to the NEW **Bass Classic Text Alerts** to receive frequent text message updates on current top weights for the designated time periods.
- 1st Place in each time slot wins \$350; 2nd place wins \$150 and 3rd place wins merchandise.
- This is independent of the Overall Big Bass Side Pot.

# CATCH-A-DREAM

A program for youth with precious little time to lose!

The Catch-A-Dream mission is to provide not only the opportunity to “catch an outdoor dream,” but also, spiritual encouragement that is often so badly needed by these children and youth. It is this very message of hope, as promised in Isaiah 40:31, that we seek to instill in these children and their families. We use hunting and fishing as opportune tools to expose these children to the “..wonders of God..” that await them in “The High Country,” as they spend time in the outdoors, away from the bleak and sterile world of medical facilities, treatments and hospital gowns, but in the presence of The Creator who is the Author of real hope.

On each trip, these children and their families, are surrounded by outdoors-minded people who understand that these children are often “...sick and tired of being sick and tired!” A volunteer Catch-A-Dream host accompanies each family. Together with outfitters and local volunteers, hosts facilitate the dream experience; love and nurture the children; establish the strong personal relationships that inevitably are forged in the lodge, on the stream or in the woods; often become their best friends; and remain a part of their families long after the dream trip has concluded. As one volunteer has eloquently stated, “We can’t change the whole world; but we can change someone’s whole world for at least a short period!” Many parents have confirmed that the mission is consistently accomplished!

Catch-A-Dream becomes aware of a child’s wish through referrals, which are accepted from parents and guardians or medical and social work professionals. Eligibility requirements are simple: the child must be a U.S. or Canadian resident, age 18 or under, suffer from a physician-certified life-threatening illness, and must not have previously been granted a hunting or fishing trip by a non-profit organization or program.

As a non-profit, charitable Foundation, Catch-A-Dream is dependent upon charitable contributions and fundraising events. Basic funding comes from the generosity of donors who have caught the vision. A significant portion of the cost of each dream trip is covered by in-kind contributions from the many partner outfitters and outdoors enthusiasts who donate the hunting and fishing opportunities and become an integral part of each child’s wish experience.

Catch-A-Dream has served over 500 families to date. We have granted outdoor adventures for children from 45 different states, ranging in age from 4 to 18 years. Trips have encompassed destinations from deep in the Gulf of Mexico to the interior of Alaska and have included whitetails, mule deer, elk, caribou, sheep, bear, wolf, bison, alligator and turkey hunts as well as snapper, mackerel, shark, halibut, cod, marlin, wahoo, salmon, trout, bass, catfish and bluegill fishing.

For additional information, to make a contribution or to refer a child, contact Catch-A-Dream at 662-324-5700, 2485 Ennis Road, Starkville, MS 39759, or visit our website at [www.catchadream.org](http://www.catchadream.org). Catch The Vision!



# Kroger

Proud Sponsor Of



Experience the vibrant flavors of local and fresh! Whether you're experimenting with a new recipe or spicing up an old favorite, you'll find all the fresh, delicious produce you need at your friendly neighborhood Kroger.

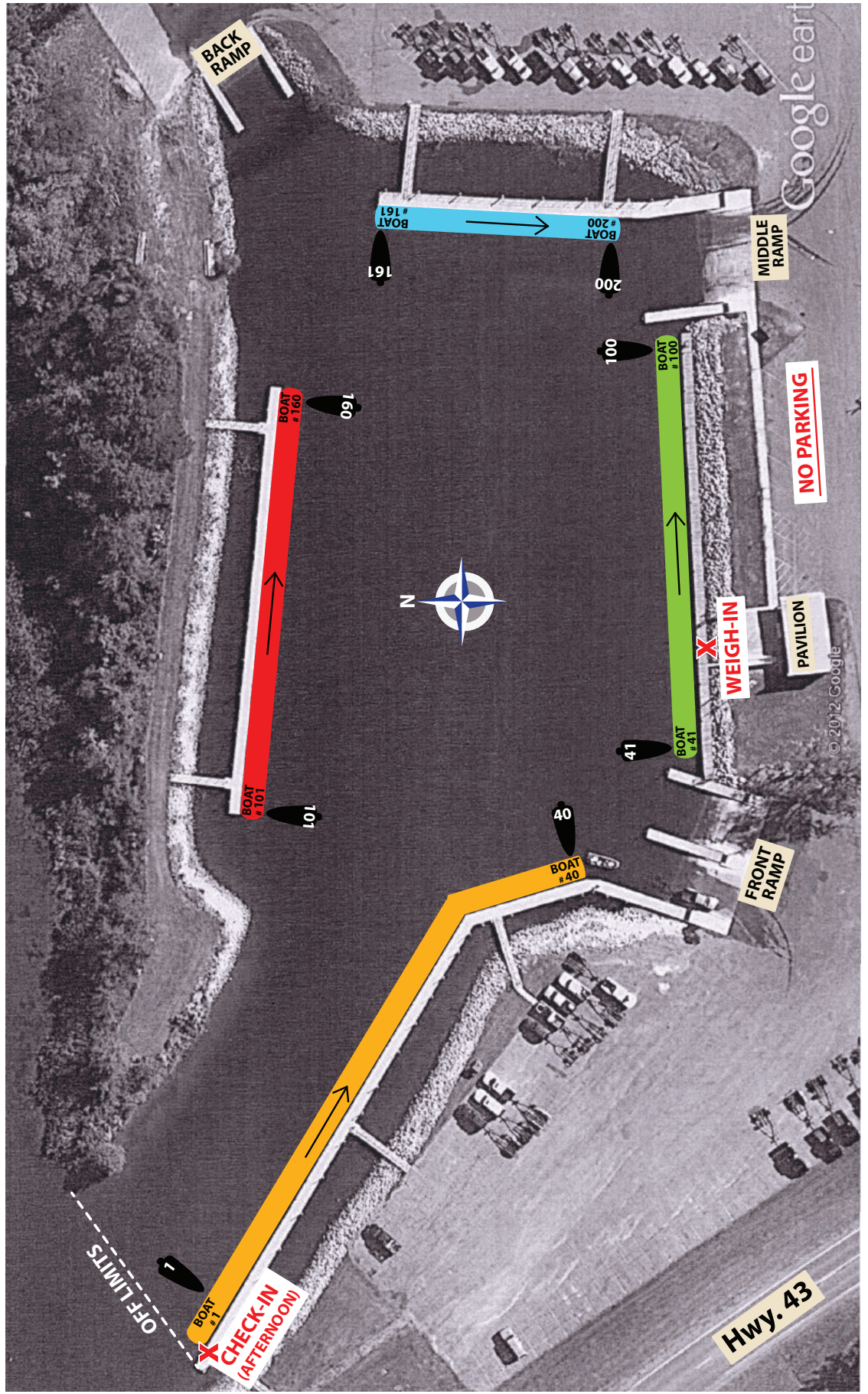


Great food.  
Low prices.



# BOAT MOORING LOCATION

Location subject to change (last boat numbers) at Saturday night meeting (To Be Announced.)





We're proud to support the  
2015 Catch-A-Dream Bass Classic



Specializing in Petroleum Transport

Don Cliburn

P.O. Box 368  
Star, MS 39167

601-845-6170  
1-800-844-0170  
Fax 601-845-8083



**FBC  
RICHLAND**  
"Believing, Belonging, Becoming"  
1102 Highway 49 South  
Richland, MS 39218  
601-939-1715  
www.fbcrichland.org



**GOLDIES  
EXPRESS**

3313 Pemberton Blvd. • Vicksburg, Mississippi 39180

**USDA Choice Meats**

Steaks, Catfish, BBQ Ribs,  
Chicken, Sausage, Burgers

SEAT LIFT CHAIRS | RESPIRATORY | MOBILITY SERVICES | SLEEP APNEA



**H**OMETOWN  
MEDICAL  
*Improving Quality of Life*

Flowood | Vicksburg

601.634.6363 | [www.hometownmedicalms.com](http://www.hometownmedicalms.com)



**The Tomato Place**  
3229 Hwy 61 South  
Vicksburg, MS 39180  
601-661-0040

[www.thetomatoplace.com](http://www.thetomatoplace.com) facebook/thetomatoplace

# **COLLISION RECON. INVESTIGATIONS, INC.**

Thanks for being Safety Team Sponsor  
Catch-A-Dream Bass Classic 2015

**THANKS**  
TO OUR FOOD SPONSORS!





Our reputation for quality, excellence and an attitude of cooperation is driven by highly motivated, loyal and dedicated employees.

**Magnolia Tree Service  
Baker Engineering  
Deviney Construction  
Deviney Equipment**

For more information contact  
Project Development:

*Brian Clegg • Bruce Deviney • Tommy Crosby*

### Deviney Utility Services

Post Office Box 6717 • Jackson, Mississippi 39282  
Phone: 601-372-3121 • 1-800-222-8038 • Fax: 601-372-8611  
[www.deviney.com](http://www.deviney.com)

**House of  
Representatives**



**Mississippi**

**Herb Frierson**  
*Appropriations, Chairman*

*District 106  
Lamar and Pearl River Counties*

*12 Trailwood Lane  
Poplarville, MS 39470*

*Bus (601) 795-6285  
Home (601) 795-1675  
hfrierson@house.ms.gov*



### JOHNSTONE SUPPLY

[www.johnstonesupply.com](http://www.johnstonesupply.com)

**EDDIE COLE**  
Branch Manager

520 Highway 80 West, Jackson, MS 392014

Cell: (602) 955-2535  
eddie.cole@johnstone-ms.com

Phone: (601) 948-4335  
Fax: (601) 948-4341

# PRIZE LIST

1ST.....	\$4000
2ND.....	\$2500
3RD.....	\$1350
4TH.....	\$1000
5TH.....	\$950
6TH.....	\$900
7TH.....	\$850
8TH.....	\$800
9TH.....	\$750
10TH.....	\$700
11TH.....	\$650
12TH.....	\$600
13TH.....	\$550
14TH.....	\$500
15TH.....	\$450
16TH.....	\$400
17TH.....	\$350
18TH.....	\$300
19TH.....	\$275
20TH.....	\$250
21ST.....	\$225
22ND.....	\$200
23RD.....	\$175
24TH.....	\$150
25TH.....	\$125

## SAFETY TEAM DIVISION

1ST.....	\$500	4TH....	PRIZES
2ND.....	\$300	5TH....	PRIZES
3RD.....	\$200		

Prizes for safety teams will be awarded to the highest finishing teams consisting of two Firefighters and/or law enforcement officers.

# Thank you for helping make the Catch-A-Dream Bass Classic a success!



Avanti Travel  
Bank of Yazoo  
Caruthers Air Conditioning  
& Heating, LLC  
Caruthers Marine  
Collision Recon. Investigation, Inc.  
FAB-TEK

Hunting Hearts Inc.  
MDWFP/Turcotte Range  
Mississippi Farm Bureau  
Mobile Mini  
Hal and Linda Parker  
Performance Outboards, Unlimited  
Plano Molding

Premier League Lures  
Raymond James Investments  
Seal Digging  
Service Printers Inc.  
Tri-State Doors  
USIC  
Winchester

**A GOOD CAUSE  
DESERVES A**

*helping  
hand.*

**I'm proud to support Catch a Dream Foundation.**

Together, we can make a difference in our community.

**Jess W. Hinton, CLU**

**(601) 939-4865**

Pearl

[jesshinton@allstate.com](mailto:jesshinton@allstate.com)

[allstateagencies.com/jesshinton](http://allstateagencies.com/jesshinton)



**Allstate**<sup>®</sup>

You're in good hands.



PROUD TO PRESENT THE

**2015**

**CATCH • A • DREAM**

**F O U N D A T I O N**

**Bass Classic**

Join us on Facebook for special offers and promotions exclusive to our *Fanpage Followers Only!*

 Bass Pro Shops - Pearl, MS

[www.facebook.com/bpspearl](http://www.facebook.com/bpspearl)



Scan with your Smartphone and give us a LIKE

# NO-COST ON THE JOB TRAINING FOR HIRING NEW EMPLOYEES

Vocational Rehabilitation and Vocational Rehabilitation for the Blind can compensate a business for the wages paid during the training of a new employee.

*\*\*The business will be eligible for all applicable tax credits once the trainee has been employed for at least 120 hours.*



For more information, contact -

Lou Ellen McDonald  
lemcdonald@mdrs.ms.gov  
601.853.5390



## **Randy Ates Agency**

101 Avalon Court, St. A, Brandon near Spillway

**601-992-6000**

## **Ricky Nations Agency**

604 Highway 80 West, Clinton

**601-925-0102**



## **PERFORMANCE OUTBOARDS UNLIMITED, LLC**

4269 Hwy 43 North  
Brandon, Mississippi 39047  
601.829.0606

Owned/Operated  
Kenny Churchill  
Myron Watson

Factory Authorized Mercury and  
Yamaha Parts & Service

# Reel Worthwhile

By Marty Brunson, CEO

*“Catch-A-Dream never sleeps.”* That’s a quip often heard by our staff and volunteers, but seldom by the general public. I often make the comment in the context of our “inner circles” to help remind all of us, including me, that we are involved in something of great importance, and that we have an equally great responsibility to be accountable and responsive.

We also talk about something that authors Ken Blanchard and Sheldon Bowles call “**The Spirit of the Squirrel**,” their term for a concept called “**Worthwhile Work**” - *Work that makes a difference not only in your own life, but also in the lives of others.*” As Blanchard explains, squirrels stay busy doing what squirrels do; they gather nuts, eat a few, and bury the rest for a later time. Funny thing about those buried nuts, though, is that the squirrels never retrieve most of them! And some of those buried nuts germinate and sprout new trees – oaks, pecans, hickories, walnuts, beeches, you name it – new forests are born because squirrels stay busy! In fact, Blanchard says that the Spirit of the Squirrel (Worthwhile Work) actually fulfills God’s plan for the forest.

At Catch-A-Dream, we believe this concept applies equally to people; that is, as we demonstrate the Spirit of the Squirrel by doing worthwhile work (which makes a difference not only in our lives, but in the lives of other people) we are fulfilling God’s plan for OTHER people (the “forest.”) Thus, “Catch-A-Dream never sleeps” because we are, truly, involved in “**Worthwhile Work**” making a difference in our own little patch of forest.

I coined the “never sleep” phrase because the lives of the people we know, those who support us, and those we serve, don’t necessarily operate on a time clock schedule. One place where that is abundantly evident is the call logs on our telephones; we get a

lot of calls and they are not always within the 8-5 timeframe. Regardless of the time or the day, we consider them all important. Often a particular call is etched in my memory not solely for the content of the conversation, but for the timing, or the setting in which I found myself when the call came in.

One of those memorable calls occurred about dark on Sunday, November 16, 2014 as I was driving north on US Highway 45 passing through Egypt, MS. I had left home an hour earlier and was making good time toward my destination in west Tennessee for a couple days of muzzle-loading for whitetails with a good friend. Yes, a long awaited couple days OFF to re-charge my own batteries; yes, Sunday night, off-hours and office closed; yes, not scheduled back in the office until Thursday but, alas ... Catch-A-Dream never sleeps, right?! And how so ever important that call turned out to be.

*“My name is Chase Koestler. We know each other from a few years back when I was a guide at Tara Wildlife; I’m now the property manager at a place called Henderson Island, which you may know as ‘Willow Point,’”* the young man said. *“Yes, Chase I remember you. How can I help?”* The words he relayed next set in motion an amazing series of events, leading to a highly remarkable and significant climax in late January 2015. *“The owners of the island asked me to contact you to see if Catch-A-Dream would allow us to provide a hunt for a child. This is something our leadership has been talking about for a year or two now, but this week-end something happened to make us realize we should have called you sooner.”*

After a brief, poignant pause, Chase continued, *“We lost one of our members this week-end, and we’d like to host an annual Catch-A-Dream hunt in his memory. Would you be willing to speak with one of the owners about this possibility? He’ll be*



available to speak with you after the funeral tomorrow.”

What I did not yet know is that Friday afternoon, November 14, Johnny Johnson, President of Johnson Construction in Brandon, MS, a prominent businessman, highly regarded and successful off-shore tournament fisherman, devoted husband, father, and “Papaw,” and a staunch founding member of the Henderson Island Hunting Club, left camp with bow in hand, headed to a favorite climbing tree for an afternoon vigil that would never occur. He did not return to camp, and a couple hours after dark Chase and Dr. Elliott Nipper, Johnny’s good friend and a co-owner of the Island, found Johnny with bow in hand and climbing stand still strapped on his back, the victim of an apparent heart attack at age 58.

Elliott and I talked many times over the next few weeks, and laid a plan for what would be the first Johnny Johnson Memorial Hunt for Catch-A-Dream. This would be our first experience with the Henderson Island group, so there was much for them and for us to learn about each other. But this particular hunt was clearly destined to occur. Brian Chisholm in our office worked hard to identify the “right fit” child for this location, and soon John Robert “JR” Irby from Neshoba County, MS was headed to Henderson Island. The timing was perfect for our friends from Drury Outdoors to capture the entire adventure on camera, and the hunt will air in Summer 2015 on their show *Natural Born*.

It quickly became clear that this group had caught what we call “The Vision” and had pulled out all stops to make this “very special hunt in memory of a very special man” not just successful, but truly unforgettable. You’ll have to wait for the episode to air to get the enthralling “details” of the hunt and adventure, which in itself was “out da box!” but for now there is a bigger picture message.



JR Irby and friends at Henderson Island

You see, Johnny’s lovely and gracious wife, Melanie, shared that Johnny’s nickname was “**Worthless**,” and that his renowned offshore boat was named “**Reel Worthless**.” From what I’ve learned, Johnny was anything BUT the personification of his nickname. His Worthwhile Work (and Play) impacted many people in his 58 years. He left amazing work, fishing, and hunting legacies, all of which are now honored through the annual hunt at Henderson Island. I’m told Johnny would have reveled in the opportunity to interact with JR and his family, and that he would have been “in his element.” But, in a very real way, he WAS there, and he will continue to impact lives through future hunts. I suspect Johnny would likely chuckle at the thought, but if he were still with us, I’d be compelled to suggest that he re-name that boat to “**Reel Worthwhile**” because he, and his friends at Henderson Island, truly have demonstrated the **Spirit of the Squirrel** in a mighty way.

Residential

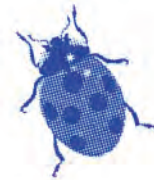
Commercial



# J & P Pest Control Inc.

Chinch Bugs to Cockroaches ... Your Bugs are *Our* Problem  
(Licensed Bonded)

(601) 824-1039



Mosquito Misting

Landscape Maintenance

*“The Tournament thanks its media sponsors.”*



Jackson's Country Music Station



**bfac.com**<sup>®</sup>  
mobile solutions to grow your business

# Clarion Ledger

# SMITH MARINE

109 Conestoga Rd, Ridgeland - Next to Shucker's Oyster Bar



**ONSITE SERVICE TRUCK AVAILABLE**



**DON'T TRUST YOUR BOAT TO JUST ANYONE!!**



**BOATS, MOTORS, REPAIRS - 25+ YRS**

**EXPERIENCED CERTIFIED TECHNICIANS**

YAMAHA, EVINRUDE

JOHNSON, VOLVO

**www.smithmarinesales.com 601-856-3959**

Mississippi's First and Foremost Bank for Businesses and Professionals.



Jackson Office



Ridgeland Office



Jackson: 1300 Meadowbrook Rd. • Jackson, MS 39211 • 601-709-7777

Ridgeland: 600 Concourse, Suite 150, 1076 Highland Colony Parkway • Ridgeland, MS 39157 • 601-790-2770

www.firstcommercialbk.com • Member FDIC

# COUPLES DIVISION

The Couples Teams  
(adult male & adult female)  
that finishes with the highest weights  
will be awarded  
**CASH & PRIZES**



Thanks to all sponsors,  
participants and volunteers  
who make the 2015 Catch-A-  
Dream Bass Classic possible!

**KEEP THE VISION!!**

Isaiah 40:31

Marty and Janice Brunson



We proudly support  
the Catch-A-Dream  
Bass Classic

# BUDDY TEAM DIVISION

Buddy Teams must be composed of one  
Adult and 1 child age 15 or younger.

**CASH PRIZES**

sponsored by



# ANOTHER TOURNAMENT TO HELP CATCH-A-DREAM!

**Pickwick Lake Catch-A-Dream Bass Classic**  
Pickwick Landing State Park, Counce, TN  
Saturday, May 30, 2015



FOR MORE INFORMATION CONTACT: TONY BROWNING (662) 231-5613

**HUNTING HEARTS, INC.**



**JOHN 14:1**

PROUD TO SUPPORT  
**CATCH • A • DREAM**  
**F O U N D A T I O N**

*"Touching One Child at a Time"*

## T . K. BYRNE

Attorney at Law  
601-925-9482

PO Box 181  
Clinton, MS 39060

604 Hwy 80 West, Suite M  
Fax: 601.925-9486

Email:  
tkbyrnelaw@gmail.com

Website:  
www.tkbyrnelawoffice.com

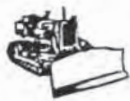
TRACY HIPPI



METAL FLAKE  
WRECK DAMAGE  
BOAT REPAIR  
DETAILING  
BOTTOM PAINT  
TRANSOMS  
FLOORS

2206 HWY 471  
BRANDON, MS 39047

(601)829-4101  
Fax(601)829-9012  
Email aquafiberglass@gmail.com  
www.aquafiberglass.com



Bulldozer  
Dirt Work - Clay Gravel  
Backhoe



**MUIRHEAD CONSTRUCTION**  
405 Muirhead Rd., Vicksburg MS 39180

**RONNIE MUIRHEAD**  
Owner

601-638-6917  
Truck: 601-529-6845



**Mike Cashion, CAE**  
Executive Director

130 Riverview Drive, Suite C, Flowood, MS 39232-8908  
(601) 420-4210 • 1-800-898-0343 • Fax (601) 608-0226  
email: mikecashion@msra.org • website: www.msra.org

## RIVER CITY Roll-Offs, LLC

405 Muirhead Road  
Vicksburg, MS 39180  
C: 601-529-6845  
O: 601-638-6917  
F: 601-638-6917  
C: 601-831-1750  
Ronnie Muirhead, Owner



James D. Burnett  
President  
Phone (601) 638-6731  
Fax (601) 638-6760

MID-SOUTH LUMBER  
& SUPPLY, INC.  
4925 Highway 61 South  
Vicksburg, MS 39180



# mipa

MISSISSIPPI INDEPENDENT PHARMACIES ASSOCIATION

**Robert H. Dozier**  
Executive Director

4209 Lakeland Drive | Suite 399 | Flowood, MS 39232  
tel 601.957.0007 | fax 601.957.0043 | cell 601.331.6507  
rh.dozier@mipa.ms | www.mipa.ms



Mississippi State Senate

SENATOR TOMMY A. GOLLOTT

New Capitol - Room 408  
P. O. Box 1018  
Jackson, MS 39215-1018  
Office: (601) 359-2886  
Fax: (601) 359-2889

235 Bayview Avenue  
Biloxi, MS 39530  
Office: (228) 432-0097  
Fax: (228) 432-0083

e-mail: dramsdell@senate.ms.gov

**§ SharpeSolutions** LLC

Government Relations

**Suzanne S. Sharpe**

President

ssharpe@sharpewise.com

120 N. Congress St., Suite 902  
Jackson, MS 39201  
601.326.9473 Phone  
601.941.2730 Cell  
601.326.9471 Fax

*Responsive Service. Strategic Advice.*

**CAPITOL AG SERVICES, INC.**

Harry Dendy, President

Service to agriculture:

Legislative affairs • Special projects • Meeting coordination

604 Highway 80 West  
Suite P-5  
Post Office Box 122  
Clinton, Mississippi 39060

cell (601) 260-5917

email: [hdendy@hughes.net](mailto:hdendy@hughes.net)

**TAMMRA CASCIO**

tcascio@hscbpa.com

Mailing Address Phone: 601.351.9444  
P.O. Box 16955 Cell: 601.940-0656  
Jackson, MS 39236-6955 Fax: 228.762.7589

**HSCB** HEIDELBERG STEINBERGER  
COLMER & BURROW  
ATTORNEYS



Mississippi Wildlife Federation  
Proudly Supports

**CATCH • A • DREAM**  
FOUNDATION

and "The Vision!"



**THE CLAY FIRM**

Stephen Clay

BETH@CLAYFIRM.COM | WWW.CLAYFIRM.COM

625 NORTH STATE STREET, SUITE 201  
PO BOX 217 | JACKSON, MS 39205-0217  
T 601.973.0559 | F 601.354.0597 | C 601-479-1119



**Mississippi  
Manufactured  
Housing**

Bus. 601-939-8820  
Fax 601-939-7988

**ASSOCIATION**

*Jennifer Hall*  
Executive Director

1001 Airport Road • Jackson, MS 39232  
Post Office Box 320369 • Jackson, MS 39232-0369  
jenhall@msmmha.com  
www.msmmha.com

**Sage Advice, Inc.**

GOVERNMENTAL AFFAIRS

**AL SAGE, PRESIDENT**



451 Northpark Drive, Suite B  
Ridgeland, MS 39157  
Mail: P.O. Box 959  
Ridgeland, MS 39158

Cellular (601) 506-2650  
Fax (601) 510-9581  
ilobbym@segeadvicems.com



**CAPITOL PARTNERS**

GOVERNMENT RELATIONS - CONSULTING

**Steve Simmons**

P.O. Box 4385  
Brandon, MS 39047

Mobile: 601.278.7160  
Steve@CapitolPartners-MS.com

[www.CapitolPartners-MS.com](http://www.CapitolPartners-MS.com)

OFFICE 601-352-4528  
FAX 601-354-0461



CELL 601-209-7268  
mnhartley@gmail.com

### *Buddy Medlin & Associates*

Government Affairs

P.O. BOX 24087 • 1009 N. WEST STREET • JACKSON, MISSISSIPPI 39202-4087  
MATT HARTLEY



**Charlie Smith**

Director

Legislative Affairs and Leadership Development  
**DEPARTMENT OF HUMAN SERVICES**

P.O. Drawer 352  
Jackson, MS 39205

Ph: (601) 359-4511  
Cell: (769) 233-3791  
charlie.smith@mdhs.ms.gov

### **Ted Thompson** Thompson & Associates

Government Relations  
814 North President St.  
Jackson, MS 39202

Phone: (601) 354-7969  
Fax: (601) 352-3896  
Cell: (601) 613-8686  
E-mail: ted@thompsonandassociatesllc.com



Mississippi Petroleum Marketers  
and Convenience Stores Association

MISSISSIPPI PETROLEUM MARKETERS  
& CONVENIENCE STORES ASSOCIATION 601-353-1624  
MISSISSIPPI PROPANE GAS ASSOCIATION 601-354-4077

Philip Chamblee  
Executive Director

Philip@mpmcsa.com

Fax: 601-353-5561  
P.O. Drawer 3859  
Jackson, MS 39207-3859  
MPMCSA@mpmcsa.com

**Joel L. Yelverton**  
Principal Consultant

**Yelverton Consulting**  
Government Relations & Advocacy

113 Green Oak Cove  
Clinton, MS 39056  
601-573-1135

website: www.yelvertonconsulting.com  
email: joel.yelverton@yelvertonconsulting.com  
Services Offered: Local and State Lobbying, Public Policy  
Consultancy & Professional Association Management



3315 Washington St Vicksburg MS 39180

**Joey Simmons Jr, Owner**

601-636-6993 ph.

601-638-4156 fax

sales@caruthersmarine.com



**CORNERSTONE**  
GOVERNMENT AFFAIRS

**CAMILLE SCALES YOUNG**  
Vice President

188 East Capitol Street, Suite 910 • Jackson, Mississippi 39201  
Tel: 601.292.7251 Direct: 601.292.7252  
Mobile: 601.594.0945 • cyoung@cgagroup.com  
www.cgagroup.com

I support the Catch-A-Dream Foundation

# Richard Brown



RANDY WRIGHT  
OWNER

RHONDA WRIGHT  
OWNER

## Goldie's TRAIL BAR-B-QUE

*Serving True Pit Bar-B-Que Meats*

RANDY WRIGHT, Jr., Mgr.      2430 South Frontage Rd.  
BUS. 601-636-9839              Vicksburg, MS 39180  
CATERING AVAILABLE



SAM LANE  
SENIOR VICE PRESIDENT

PHONE (601) 709-2375

e-mail: slane@firstcommercialbk.com

P O BOX 12868  
JACKSON, MS 39236

1300 MEADOWBROOK ROAD  
JACKSON, MS 39211

FAX (601) 366 8733

www.firstcommercialbk.com

## TOP DOLLAR PAWN & GUN, INC.

3421 Washington Street  
Vicksburg, MS 39180 - 601-636-7445



TV's - VCR's  
Guns - Knives - Jewelry  
Cash Loans On Anything of Value

JOAN TREMAINE  
Co-Owner

## WARREN COUNTY Waste Control, LLC

3921 Jeff Davis Road  
Vicksburg, MS 39180

Billing Address:  
405 Muirhead Road  
Vicksburg, MS 39180

O: 601-638-6917  
F: 601-638-6917  
C: 601-529-6845  
C: 601-831-1750  
Ronnie Muirhead, Owner



STATE OF MISSISSIPPI  
DEPARTMENT OF AGRICULTURE AND COMMERCE

CINDY HYDE-SMITH  
COMMISSIONER

121 N. Jefferson St.  
Jackson, MS 39201

MISSISSIPPI

(601) 359-1100  
Fax (601) 354-7710  
cindyhs@mdac.ms.gov

The  
Echols  
GROUP  
WHEN RESULTS MATTER



Donna Echols, Ph.D., ABD

Mississippi Lobbyist

dechols@TheEcholsGroup.com

601.991.0023 (office)

601.291.6064 (cell)

Special thanks to our  
Banquet Host  
**Mississippi  
Trade Mart**

Fox  
Law  
Group

Sara Fox

Office 601.825.6111

www.foxlawgroup.ms

Post Office Box 310 • Brandon, MS 39043-0310

I-20 at Highway 80/276 Maxey Drive

Special thanks to our  
Official Lure Companies



Proud to support the  
2015 Catch-A-Dream Bass Classic



# FRIENDS & FAMILIES

Recently we received a special note from one of our CADF families from Tennessee

Dear Catch-A-Dream,

Our family is so grateful for the wonderful trip you provided for our daughter, Kristyn, back in December. To this day she cannot stop talking about her trip and the experience she had “catching” her white-tailed deer at “Lake X” in central Florida. All the folks involved, including Brian and Jay, made the dream an experience of a lifetime!! The entire time Kristyn was treated like a “queen” and the rest of the family was taken care of as well! It was truly an amazing getaway where the whole family could forget about everything for four days! The peace and tranquility of this place called “Lake X” was just so soothing. You knew you were in God’s country!

The deer meat was delicious and the collage picture just beautiful! Kristyn looks at all the pics and just smiles ear to ear while saying that was the best time of her life! At one point before the trip we were worried that Kristyn would not feel well enough to go. She had been in the hospital for about four days having a round of chemo; she was very weak, tired and having pain. To be so far away from home and her hospital was very worrisome for us.

But God was with us and she felt good the day we left on the trip and the entire time! It was definitely meant to be! Since we returned from the trip Kristyn has been in and out of the hospital, had proton beam radiation treatment, and more chemo. She continues to fight this battle each and every day. We keep the faith and know it’s in God’s hands.

From the bottom of our hearts – we thank you for all you’ve done for Kristyn and our family. We are truly blessed!

With love from Tennessee,  
Jim, Renata, Kristyn, Meghann and Katelyn



Kristyn, age 15, from Tennessee, with a “hoss” of a Sunshine State whitetail harvested on her recent Catch-A-Dream hunt in central Florida.





*Catch-A-Dream* grants once-in-a-lifetime hunting and fishing experiences to children across North America, age 18 and younger who suffer from a life-threatening illness, at a time when these children need to know that hope, does, indeed, exist.

## A Program for Youth with Precious Little Time to Lose!

To learn how you can support *Catch-A-Dream* through a tax deductible contribution of funds, in-kind goods and services, outfitting and guide services, or to refer a child whose outdoor dream we can help come true, contact us:

Catch-A-Dream Foundation  
2485 Ennis Rd, Starkville, MS 39759



**VISIT:**

**[www.catchadream.org](http://www.catchadream.org)**

**EMAIL:**

**[info@catchadream.org](mailto:info@catchadream.org)**



**CATCH • A • DREAM**  
**F O U N D A T I O N**

*The Catch-A-Dream Foundation is a 501 (c)(3) tax-exempt charitable organization. All contributions to the Catch-A-Dream Foundation are tax deductible to the extent allowed by law.*