



## ROSTA Mounts in Timber Industry

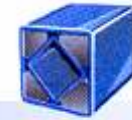
### **Situation:**

In its product range, ROSTA has tensioning and suspension elements which are outstanding for the rough working conditions in the timber industry. Modern wood processing requires high equipment performance and reliability – that's where ROSTA fits in.

**ROSTA offers endurance and performance for your equipment!**

These absolutely maintenance-free elements are ideal for impact absorption, shaker suspensions and belt and chain tensioning.





## ROSTA Mounts in Timber Industry

### Log and Board Handling

Automated log handling assures the material supply of all downstream processes. During conveying, sorting and positioning of logs **violent impact forces** occur.

The ESL elements **absorb high energies** and prevent structure and product from being damaged.

Due to the simple and robust construction of the ROSTA elements they last typically for the lifetime of the machine.







## ROSTA Mounts in Timber Industry

### Log Feeding to Sawmill or Wood Chipper

Feed mechanism of sawmills and wood chippers have to cope with different sizes and shapes of logs and are stressed by shock loads.

Chain drives need a constant tensioning in order to distribute the force over the length of the chain, thus to assure the longest possible chain life.

The ROSTA tensioner SE with its progressive characteristic and dampening qualities suits perfect for this application.





## ROSTA Mounts in Timber Industry

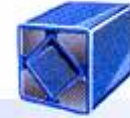
### Wood Chipper Drive

This wood chipper is being fed with different waste wood and rootstocks. The power draw of the motor fluctuates with the peaks in workload and hardness of the wood.

The harsh working conditions required frequent belt changes due to belt overstress and incorrect tensioning. Now with the ROSTA Motorbase in place an automatic tensioning of the belt and a compensation of inertia peaks has been achieved.







## ROSTA Mounts in Timber Industry

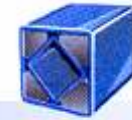
### Hold Downs and Aligning Rollers for Molding Cutters and Edge Wrapping Machines

Progressive spring characteristic

Dampening thus do not bounce

Hold downs with a ROSTA design are highly effective, simple and consist of the lowest number of parts possible.





## ROSTA Mounts in Timber Industry

### Efficient Shaker Conveyors (single mass – crank driven)

Shaker suspensions with ROSTA elements are fully maintenance free and ensure a long lasting stable, silent and calm operation in a rough environment.

Easy and cost saving assembly and aligning of rocker arms. No breakages, no wear, no downtime.

Highly efficient single mass shaker conveyors for accelerations up to 1.7 g and with ROSTA accumulators for up to 2.2 g or trough lengths above 12m.





## ROSTA Mounts in Timber Industry

### Smooth Shaker Conveyors (natural frequency shaker)

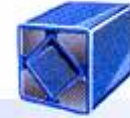
For high acceleration forces or long trough designs, shakers can be equipped with ROSTA accumulators.

Resonance shaker with ROSTA run close to its resonance frequency. They allow for high productivity by having a simple design and reduced energy consumption.

With ROSTA accumulators added to the shaker design, operation is possible for up to 2.2 g or trough-lengths above 12m.







## ROSTA Mounts in Timber Industry

### High Performance Shaker Conveyors (2 mass)

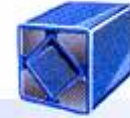
Extremely fast transport speeds ask for accelerations higher than 2.2 g. Therefore, reaction forces of the trough have to be compensated.

ROSTA's double suspension rockers are built for high performance conveyors with a two-mass system. The elements guarantee smooth and reliable operation at high speeds.

A large number of international shaker equipment manufacturers trust on ROSTA elements when it comes to cost effectiveness, performance and endurance.







## ROSTA Mounts in Timber Industry

### Long Lasting Gyratory-Sifter Suspensions

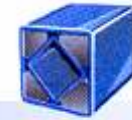
Free standing or hanging sifters are operated in dusty and sometimes abrasive environments – the suspensions have to be heavy duty!

AK-mounts from ROSTA have proven reliable and efficient for hanging sifter designs as well as for demanding free standing, crank driven applications.

No lubrication is needed. The cardanic joints from ROSTA are friction and maintenance free.

Vibrations and shocks are being absorbed by this unique universal joint design.





## ROSTA Mounts in Timber Industry

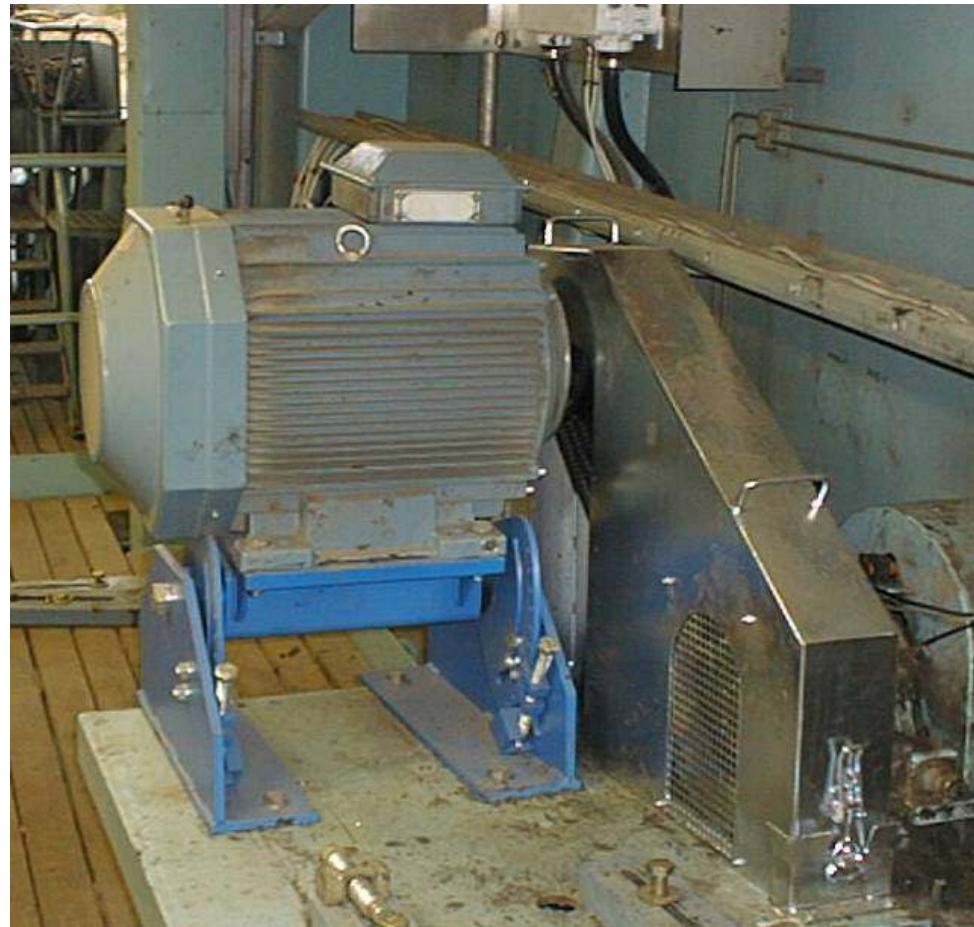
### **Self Tensioning Drive Systems for Friction-Belt Transmissions**

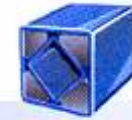
Automatic compensation of v-belt elongation. Assuring optimum force transmission over the entire life span of the belts.

The ROSTA motor base controls the starting torque and avoids belt overstretching. Shocks and vibrations are being absorbed.

The customer benefits from reduced machine down time, a maintenance free tensioning system and quick and easy belt replacement.

ROSTA leads to cost saving!





## ROSTA mounts in Wood Industry

### Customer benefits in applying ROSTA rubber suspensions on wood processing equipment:

- Wide assortment of standardized devices, available from stock (complete torque- and size gradation)



- very long lifespan, rugged design, built for the wood industry
- weatherproof design, highly corrosion-resistant and resistant to dust and dirt
  - no maintenance or lubrication required







## ROSTA Mounts in Wood Industry

### Market leaders count on ROSTA:



Germany, D-57647 Hirtscheid



Germany, D-57642 Alpenrod



Germany, D-56472 Dreisbach



Italy, 31047 Ponte di Piave



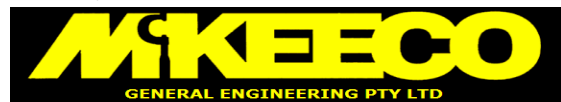
Germany, D-88212 Ravensburg



Italy, 38087 - Roncone



France, 51300 HAUSSIGNEMONT



Australia, Lismore NSW 2480