

BISCO

PRODUCT SPOTLIGHT

# REVEAL<sup>®</sup>

*HD Bulk*



NEW

PRODUCT

REVEAL<sup>®</sup>

HD Bulk



1-800-247-3368 • [www.bisco.com](http://www.bisco.com)

Rx Only

# TABLE OF CONTENTS

## ADHESIVES/ETCHANTS

All-Bond Universal® .....	1
Universal Primer™ .....	2
Select HV® Etch w/BAC, Uni-Etch® w/BAC, Etch-37™ w/BAC .....	3

## FLOWABLES/LINER

TheraCal LC® .....	4
--------------------	---

## CEMENTS

eCEMENT® .....	5
Duo-Link Universal™ .....	6
TheraCem® .....	7

## COMPOSITES

REVEAL HD® Bulk .....	8
-----------------------	---

## CORE MATERIALS

Core-Flo™ DC & Core-Flo™ DC Lite .....	9
--	---

## TECHNIQUE

Porcelain Veneer Cementation .....	10
Post Cementation & Core Build-up .....	11
Intraoral Repairs-Porcelain, PFM or PFZr .....	12
Bulk Fill Composite Placement .....	13
Conventional Cementation of Metal/PMF/Zirconia Crowns (Retentive Preps) .....	14
Bonded Cementation of Inlays/Onlays, Bridges, Crowns (Short/Tapered Preps) .....	15

# All-Bond Universal<sup>®</sup>

## Light-Cured Dental Adhesive

All-Bond Universal is the culmination of over 30 years of adhesive research at BISCO. As a universal adhesive it can be used with both direct and indirect restorations and is formulated to be compatible with light-, dual- and self-cured materials. The versatility of All-Bond Universal makes it an indispensable part of any dental practice.

The First  
TRULY  
UNIVERSAL  
Dental  
Adhesive



### Clinical Significance:

Other single bottle, universal adhesives may need more than 1 bottle for indirect restorations, but with ALL-Bond Universal, NO activator is required

### UNIQUE BENEFITS

- Not technique sensitive; use on wet, dry, or moist tooth structure
- Impressive bond strength to ALL substrates
- Ideal chemical balance for both total- and self-etch adhesion from one bottle
- Virtually no post-operative sensitivity
- No activator required

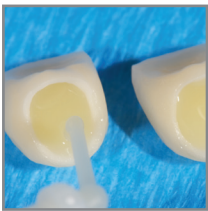
Dentistry courtesy of Tyler Lasseigne, DDS, CDT



1. Apply Z-Prime™ Plus



2. Apply All-Bond Universal



3. Apply Duo-Link Universal™

### ORDERING INFORMATION

#### Bottle

All-Bond Universal Standard Kit B-72020K  
All-Bond Universal (6ml) B-7202P

#### Unit-Dose Packages

All-Bond Universal Unit-Dose (50pk) B-73050K  
All-Bond Universal Unit-Dose (100pk) B-73100K



See pages 10, 13, and 15 to reference technique.





# Universal Primer™

## Dual-Cured Adhesive

Universal Primer is a low film thickness, dual-cured adhesive/primer designed for the dentist who prefers not to light cure the adhesive layer under indirect restorations.

### UNIQUE BENEFITS

- Can be used with total-etch, self-etch, or selective-etch techniques
- Clinical evaluation confirms the ease-of-use, with virtually no post-operative sensitivity
- Low film thickness (<5µm)
- No light-curing necessary when used with dual-cure or self-cure restorative material

### Clinical Significance:

A dual-cured adhesive designed to be used without having to cure the adhesive layer under indirect restorations

### ORDERING INFORMATION

Universal Primer  
Part A & B Set (6ml ea.)      B-4110P

Dentistry courtesy of Ross Nash, DDS, FAACD



1. Tooth preparation



2. Apply Universal Primer



3. Apply Duo-Link Universal™



4. Final restoration

See pages 10, 11 and 15 to reference technique.



# Select HV<sup>®</sup> Etch w/BAC, Uni-Etch<sup>®</sup> w/BAC, Etch-37<sup>™</sup> w/ BAC

## Phosphoric Acid Etchants with Benzalkonium Chloride (BAC)

SELECT HV ETCH is a 35% high-viscosity phosphoric acid etchant with BAC. It is specifically formulated for pin-point placement to etch enamel when using a self-etch adhesive.

UNI-ETCH w/BAC and ETCH-37 w/BAC are 32% and 37% semi-gel phosphoric acid etchants with BAC. They are specifically formulated to be easily applied to larger surface areas and rinsed cleanly with no residue.



### Clinical Significance:

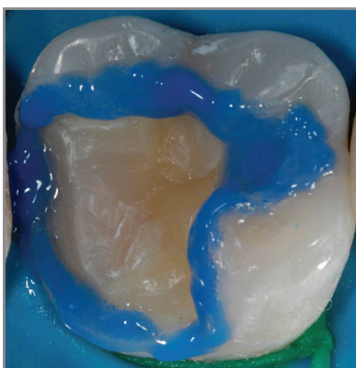
For etching tooth structure prior to bonding

### UNIQUE BENEFITS

- Contains benzalkonium chloride (BAC), an antimicrobial agent. In-vitro research shows it is effective against *Streptococcus mutans*<sup>1</sup>.

*NOTE: Inclusion of BAC has not been shown to correlate with a reduction in secondary decay in patients. In-vivo clinical studies to evaluate the effects of BAC on oral bacteria or caries have not been performed.*

Dentistry courtesy of Dr. Michael Morgan



Select HV Etch w/BAC demonstrating pin-point placement on enamel

### ORDERING INFORMATION

#### Select HV Etch w/BAC

Bulk Syringe Kit	E-59200K
Bulk Syringe Refill (30ml)	E-59160P
4 Syringe Package (5g ea.)	E-59110P

#### Uni-Etch w/BAC

Bulk Syringe Refill (30ml)	E-56621P
4 Syringe Package (5g ea.)	E-5502EBM
Bulk Bottle (30g)	E-5637EB

#### Etch-37 w/BAC

Bulk Syringe Refill (30ml)	E-56741P
4 Syringe Package (5g ea.)	E-5503EBM
Bulk Bottle (30g)	E-5638EB



<sup>1</sup> Dr. Daniel Chan, University of Texas Health Science Center at San Antonio Dental School. Residual Effect of 1 and 2% Benzalkonium Chloride Incorporated into an Etchant on the Susceptibility of *Actinomyces viscosus* T14V. 1993



## Clinical Significance:

The proprietary formulation of TheraCal LC consists of tri-calcium silicate particles in a hydrophilic monomer that provides significant calcium release\* making it a stable and durable material as a liner

## TheraCal LC<sup>®</sup>

### Resin-Modified Calcium Silicate Pulp Protectant/Liner

TheraCal LC is a light-cured resin modified calcium silicate designed to protect and seal the pulp for both direct and indirect pulp capping procedures.

#### UNIQUE BENEFITS

- Calcium release stimulates<sup>1\*</sup> hydroxyapatite and secondary dentin bridge formation<sup>2,3</sup>
- Alkaline pH promotes healing<sup>2,4</sup>
- Forms a protective seal<sup>5,7,8</sup>
- Protects and insulates the pulp<sup>5,6</sup>
- Moisture tolerant<sup>1</sup> and radiopaque – can be placed under restorative materials and cements

## ORDERING INFORMATION

TheraCal LC 4-Syringe Pack    H-33014P  
TheraCal LC Syringe (1g)    H-3301P

Dentistry courtesy of Dr. Ross Nash



1. Distal-occlusal caries present on an asymptomatic mandibular first premolar



2. Incomplete excavation of caries leaving affected dentin without exposing the pulp



3. Direct placement of TheraCal LC as an indirect pulp cap on entire pulpal floor



4. 1 mm layer of TheraCal LC after light-cure for 20 seconds

See page 13 to reference technique.



\* Bisco has, on file, the calcium release data for TheraCal LC.

1. Gandolfi MG, Siboni F, Prati C. Chemical-physical properties of TheraCal, a novel light-curable MTA-like material for pulp capping. International Endodontic Journal. 2012 Jun;45(6):571-9.  
2. ADA definitions for direct and indirect pulp capping at: [www.ada.org/en/publications/cdt/glossary-of-dental-clinical-and-administrative-terms](http://www.ada.org/en/publications/cdt/glossary-of-dental-clinical-and-administrative-terms)  
3. Apatite-forming Ability of TheraCal Pulp-Capping Material, M.G. GANDOLFI, F. SIBONI, P. TADDEI, E. MODENA, and C. PRATI J Dent Res 90 (Spec Iss A):abstract number 2520, 2011 ([www.dentalresearch.org](http://www.dentalresearch.org))  
4. Okabe T, Sakamoto M, Takeuchi H, Matsushima K (2006) Effects of pH on mineralization ability of human dental pulp cells. Journal of Endodontics 32, 198-201.  
5. Sangwan P; Sangwan A; Duhan J; Rohilla A. Tertiary dentinogenesis with calcium hydroxide: a review of proposed mechanisms. Int Endod J. 2013; 46(1):3-19  
6. Selcuk SAVAS, Murat S. BOTSALI, Ebru KUCUKYILMAZ, Tugrul SARI. Evaluation of temperature changes in the pulp chamber during polymerization of light-cured pulp-capping materials by using a VALO LED light curing unit at different curing distances. Dent Mater J. 2014;33(6):764-9.  
7. Cantekin K. Bond strength of different restorative materials to light-curable mineral trioxide aggregate. J Clin Pediatr Dent. 2015 Winter;39(2):143-8.  
8. Mechanical Properties of New Dental Pulp-Capping Materials Over Time. M. NIELSEN, R. VANDERWEELE, J. CASEY, and K. VANDEWALLE, USAF, JBSA-Lackland, TX, J Dent Res 93(Spec Iss A): 495, 2014 ([www.dentalresearch.org](http://www.dentalresearch.org))

# eCEMENT®

## Adhesive Cementation System for Lithium Disilicate Restorations

The eCEMENT system is indicated for the luting of lithium disilicate (e.g. IPS e.max®\*) veneers, inlays, onlays, crowns, bridges and all CAD/CAM blocks and pressable ingots.

### UNIQUE BENEFITS

- > Universal and versatile
- > Easy removal of excess cement
- > Low film thickness
- > Radiopaque

Your One Kit For Lithium Disilicate Restorations

(e.g. IPS e.max®\*)



### Clinical Significance:

The eCEMENT kit offers the clinician a convenient, all in one approach to cementing IPS e.max®\* indirect restorations with eCEMENT light-cured and dual-cured cements, Porcelain Primer, All-Bond Universal®, Porcelain Etchant and Select HV® Etch

Courtesy of Adamo E. Notarantonio, DDS



1. Apply All-Bond Universal



2. Remove excess cement



3. Final restorations

See page 10 and 15 to reference technique.

\*IPS e.max is a registered trademark of IVOCLAR VIVADENT, Inc.  
eCEMENT is a registered trademark of BISCO, Inc.  
There is no sponsorship, affiliation or connection between BISCO, Inc. and IVOCLAR VIVADENT, Inc

### ORDERING INFORMATION

System Kit	C-52400K
A1 LC Syringe (4.5g)	C-52010P
Translucent LC Syringe (4.5g)	C-52120P
Milky Bright LC Syringe (4.5g)	C-52230P
Universal DC Dual-Syringe (8g)	C-52340P





# CEMENTS



Highly radiopaque  
with easy clean-up

## Clinical Significance:

Extremely high degree of conversion in both light- and self-cured modes ensures a strong, long lasting restoration

# Duo-Link Universal™

## Resin Luting Cement

The Duo-Link Universal Kit is an adhesive cement system that contains all the components needed for cementation of indirect restorations\*, including primers for restoration treatment.

### UNIQUE BENEFITS

- Highly radiopaque with easy clean-up
- Ideal for all CAD/CAM restorations

## ORDERING INFORMATION

System Kit with All-Bond Universal	A-19620K
System Kit with Universal Primer	A-19710K
Universal Dual-Syringe (8g)	A-19030P
Milky White Dual-Syringe (8g)	A-197MWP

Courtesy of Darren D. Simpson, DDS



1. Duo-Link Universal dispensed on the crown



2. All-Bond Universal® applied, air dried, and light cured.



3. Restoration seated. Excess cement peeled away



4. Final restoration

See page 15 to reference technique.

\*It is recommended to use BISCO's CHOICE™ 2 for veneer cementation.



Duo-Link Universal Kit with All-Bond Universal

Dental **PRODUCT SHOPPER**

**BEST PRODUCT**

THE DENTAL ADVISOR  
2014 PREFERRED PRODUCTS  
++++ 1/2

THE DENTAL ADVISOR  
++++ 1/2  
www.dentaladvisor.com

THE FUTURE IS HERE with the  
“NEXT GENERATION CEMENT”

# TheraCem®

## Self-Adhesive Resin Cement

TheraCem is a dual-cured, calcium and fluoride-releasing, self-adhesive resin cement indicated for luting crowns, bridges, inlays, onlays and posts (prefabricated metal/non-metal/fiber posts).

### UNIQUE BENEFITS

- Continuous calcium and fluoride release<sup>1</sup>
- Transitions from acidic to alkaline pH in minutes<sup>2</sup>
- Specially formulated to allow for quick and easy clean-up
- A high degree of conversion ensures a higher physical strength
- Easy to identify on radiographs for quick and effective diagnosis
- Easy auto-mix, dual-syringe provides a consistent mix for immediate delivery



### Clinical Significance:

Delivers a strong bond to zirconia and most substrates with no priming or etching required

Courtesy of Joseph Kim DDS, JD, FAGD, FICOI



1. Cleaned and prepared tooth.

2. TheraCem is used



3. TheraCem being cleaned up

4. Inspected margins

### ORDERING INFORMATION

Natural  
Dual-Syringe (8g)

D-46311P



See page 14 to reference technique.

1. Gleave CM, Chen L, Suh BI. Calcium & fluoride recharge of resin cements. Dent Mater. 2016 (32S):e26.  
2. New Self-adhesive Resin Cement With Alkaline pH. Chen L, Gleave C, Suh B, J Dent Res96(A):#286, 2017.



## REVEAL HD® Bulk

### Light-Cured Bulk Fill Composite

REVEAL HD Bulk is optimized to allow for easier, faster posterior restorations by combining superior levels of handling, placement, and depth of cure. The exceptional ease-of-use allows for simple and convenient placement of the composite in the prep, while the category-leading depth of cure ensures a solid restoration from the top-down so you can cure with confidence.

### Clinical Significance:

Confidently and predictably cure in 5-6 mm increments\*, utilizing the desired bulk-filling technique to save time while still ensuring a high-quality restoration.

### UNIQUE BENEFITS

- Category-leading depth of cure (5-6 mm increments)\*
- Exceptional radiopacity (4.0 mm Al)
- Superior compressive strength (370 MPa)
- Optimized handling and polishability via HD Filler Technology

### ORDERING INFORMATION

REVEAL HD Bulk  
Unit-Dose Kit H-93030K

REVEAL HD Bulk  
Syringe Kit H-93010K

#### REVEAL HD Bulk Unit-Dose (25 pk)

A1 H-9332A1P

A2 H-9332A2P

A3 H-9332A3P

B1 H-9332B1P

#### REVEAL HD Bulk Unit-Dose (50 pk)

A1 H-9334A1P

A2 H-9334A2P

A3 H-9334A3P

B1 H-9334B1P

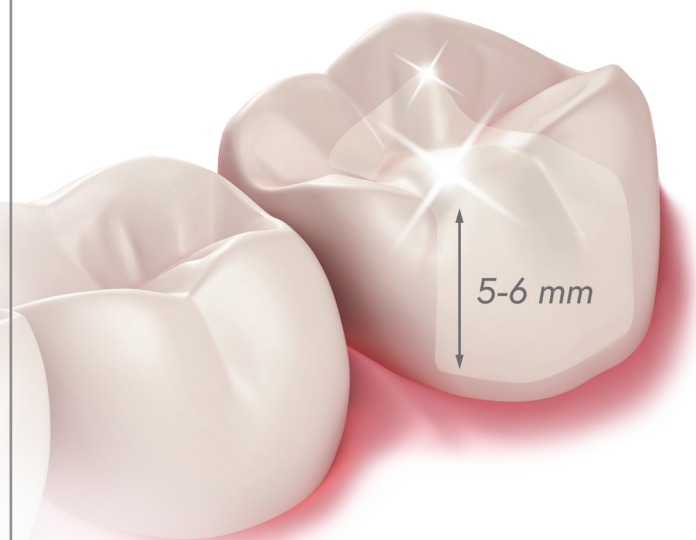
#### REVEAL HD Bulk Syringe (3g)

A1 H-931A1P

A2 H-931A2P

A3 H-931A3P

B1 H-931B1P



See page 13 to reference technique.

\*Varies based on the shade selected.



# CORE-FLO™ DC / CORE-FLO™ DC Lite

Dual-Cured Core Build-Up Material

CORE-FLO DC and CORE FLO DC Lite are dual-cured, fluoride-containing core materials that are ideal for core build-ups, post cementation and as a dentin replacement material.

## UNIQUE BENEFITS

- High compressive & flexural strength
- Stackable (Core-Flo DC) or self-leveling (Core-Flo DC Lite) for optimal handling
- Easy to prepare – cuts like dentin
- All-in-one procedure: cement post to core build-up
- Radiopaque



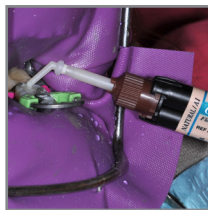
## Clinical Significance:

Dual-cured, flowable or low viscosity, core materials save time when cementing posts and building the core

Dentistry courtesy of Dr. Jack D Griffin Jr.



1. Enamel etched with Select HV® Etch



2. Core-Flo DC Lite applied after use of Universal Primer™



3. Core-Flo DC Lite placed

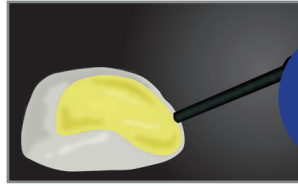
See page 11 to reference technique.

## ORDERING INFORMATION

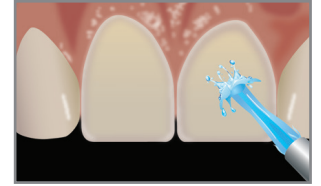
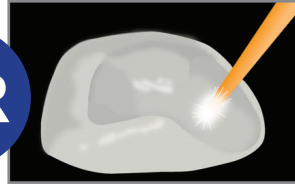
<b>Core-Flo DC Lite</b>	
System Kit with Universal Primer	AB-17410K
Natural/A1 Dual-Syringe (8g)	A-17801P
Opaque White Dual-Syringe (8g)	A-17803P
<b>Core-Flo DC</b>	
System Kit with Universal Primer	M-23412K
Natural/A1 Dual-Syringe (8g)	A-23011P
Opaque White Dual-Syringe (8g)	A-23012P



# Porcelain Veneer Cementation\*



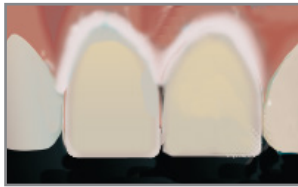
OR



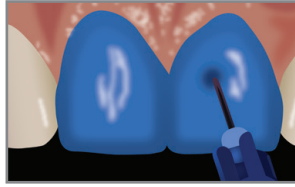
1. Prepare the internal surface of the restoration as instructed by the laboratory:

- a. Porcelain/Lithium Disilicate:  
If needed, etch the veneer with hydrofluoric acid (4% **Porcelain Etchant** or 9.5% **Porcelain Etchant**) according to the manufacturer's instructions.
- b. Apply a thin coat of silane (**Porcelain Primer**) to the internal surface. Wait for 30 seconds, or dry with (warm) air.

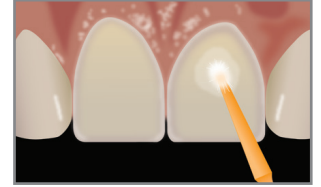
2. Remove the temporary restorations and clean the preps with **Cavity Cleanser™** and pumice slurry. Rinse thoroughly.



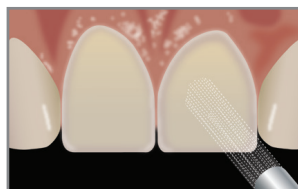
3. Try in the restorations using the corresponding shade of water-soluble try-in paste (**CEMENT® Try-In** or **Choice 2™ Try-In Paste**). Remove the veneers and either clean with etchant (**Uni-Etch® w/BAC** or **Select HV® Etch w/BAC**) and rinse thoroughly, or ultrasonicate in water or alcohol for 2-3 minutes. Dry the restorations.



4. Isolate. Etch preps with **Uni-Etch w/BAC** or **Select HV Etch w/BAC** for 15 seconds, then rinse thoroughly.



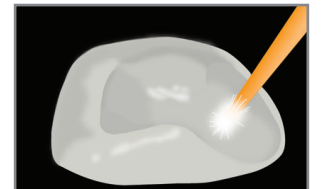
5. Dispense **Universal Primer™** & mix (or **All-Bond Universal®**) in a mixing well. Apply 2 separate coats, agitating each coat for 10-15 seconds.



6. Gently air dry until there is no visible movement of the adhesive. Then thoroughly air dry with greater air pressure. The surface should appear shiny, otherwise apply additional coats.



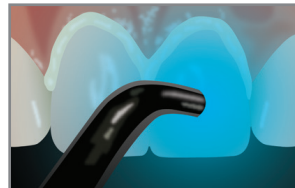
7. Light cure for 10 seconds.



8. Apply a thin layer of HEMA-free resin (**Porcelain Bonding Resin**) to the internal surface of the veneer. Do NOT light cure.



9. Using a light-cured resin cement (**CEMENT LC** or **Choice 2**), fill the internal surface of the restoration with the cement.

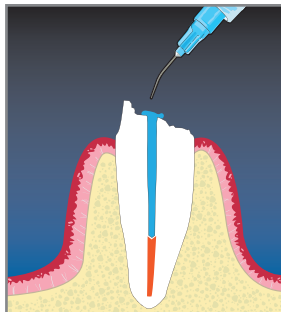


10. Seat with gentle, passive pressure and light-cure for 2-3 seconds to tack the veneer into place. Remove excess cement, then light cure each veneer for 40 seconds.

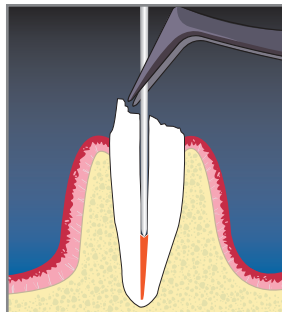
\* Refer to instructions for complete details.

See page 5 for more product information.

# Post Cementation & Core Build-up\*



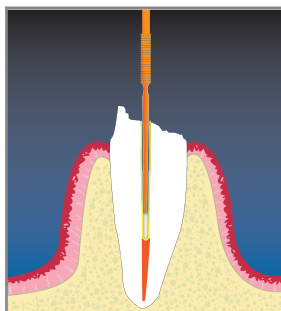
1. If using the TOTAL-ETCHING TECHNIQUE, etch the canal with Uni-Etch® w/BAC or Select HV® Etch w/BAC for 15 seconds. If using the SELF-ETCHING TECHNIQUE, proceed to the next step.



2. Clean and irrigate. Rinse canal with water. Remove excess water with a brief burst of air and paper point(s) to remove any pooled water from the canal.



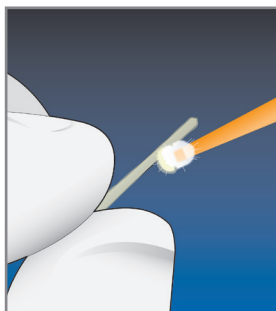
3. Dispense Universal Primer™. Mix adhesive.



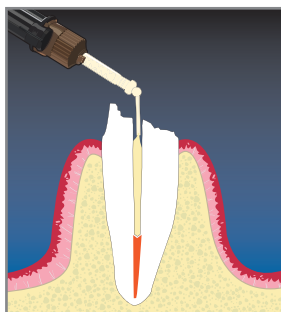
4. With an endodontic brush, apply and scrub 2 separate coats of Universal Primer into the canal. Remove excess pooling of material with paper points and light suction. Strongly air dry.



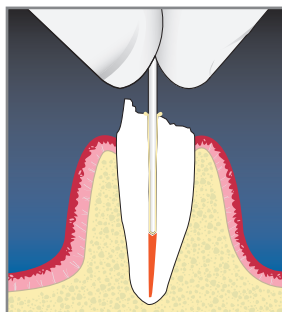
5. Determine the post length according to the manufacturer's instructions.



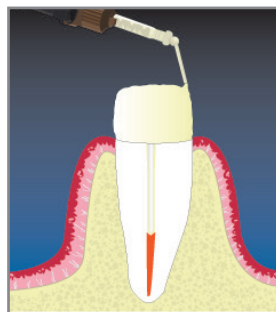
6. Coat the post with Universal Primer. Air dry.



7. Inject Core-Flo™ DC or Core-Flo™ DC Lite into the canal.



8. Coat the apical end of the post with Core-Flo DC or Core-Flo DC Lite. Seat the post into the canal gently.



9. Continue to express Core-Flo DC or Core-Flo DC Lite around the post and build up the core to the desired height and shape. Remove the excess material and light cure for 40 seconds.

\* Refer to instructions for complete details.

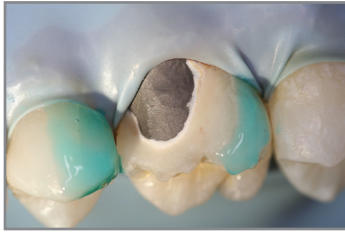
See page 9 for more product information.



# Intraoral Repairs

## Porcelain, PFM or PFZr\*

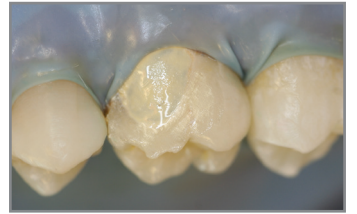
1. Isolate the area to be repaired. Remove the glaze and bevel (45 degrees) the porcelain around the area to be repaired. Sandblast or abrade with a coarse diamond bur. Rinse with water and air dry.



2. Place **Barrier Gel** on the gingival tissue and porcelain to protect areas where etching is not desired.

3. Apply **9.5% Porcelain Etchant** to the dry porcelain surface for 90 seconds. Suction the etchant with high volume evacuation, then rinse with water and air dry. The etched porcelain should appear dull and frosty.

4. Clean the etched porcelain with **Uni-Etch® w/ BAC** or **Select HV® w/BAC** and agitate for 20 seconds to remove any salts. Rinse and dry thoroughly.



5. Apply 1 coat of silane (**Porcelain Primer** or **Bis-Silane™**) to the etched porcelain and allow to dwell for 30 seconds. Dry with (warm) air syringe.

6. Apply 1 coat of **Z-Prime™ Plus** to the exposed metal/zirconia/alumina and dry with an air syringe for 3-5 seconds.

7. If metal masking is required, dispense one drop each of **Catalyst & Base** onto a mixing pad and mix with a brush tip. Apply a thin coat of **Opaquer** only to the metal surface. Allow to self cure, or light cure for 5 seconds.



8. Apply a thick layer of **Porcelain Bonding Resin** to the repair site. Spread a hybrid composite (**Aelite™ All-Purpose Body**) evenly over the surface and light cure, finish/polish.

9. Place **Bis-Cover™ LV** to seal and glaze the composite.

\* Refer to instructions for complete details.

Visit [bisco.com](http://bisco.com) to learn more about BISCO's Intraoral Repair Kit.

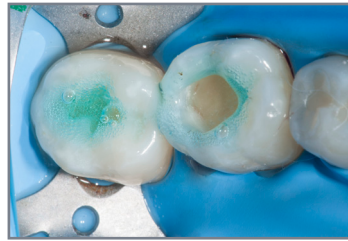
# Bulk Fill Composite Placement Technique\*

Select the desired type of shade of **REVEAL HD®** Bulk composite while the tooth is still moist.



1. Clean the preparation with a slurry of pumice and water or **Cavity Cleanser™**. Rinse and dry the preparation.

Optional: When preparation is close to the pulp or pulp is exposed place up to 1 mm of **TheraCal LC®** onto visibly moist cavity floor. Light cure for 20 seconds.



2. Optional: Etch with **Uni-Etch w/BAC** or **Select HV Etch w/BAC** for 15 seconds, then rinse thoroughly.



3. Apply 2 coats of **All-Bond Universal®**, scrubbing for 10-15 seconds per coat (do not air dry or light cure between coats). Air dry for 10 seconds to evaporate solvent. Light cure for 10 seconds.



4. Using the selected shade, place **REVEAL HD Bulk** in one 5-6 mm\*\* layer and light-cure.

Optional: **REVEAL HD Bulk** can be used as a base under all light-activated restorative composites and used in a layering technique if desired.



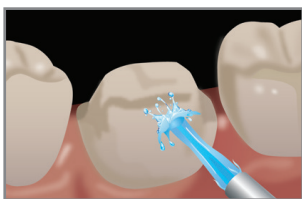
5. Adjust occlusion, finish and polish.

\* Refer to instructions for complete details.

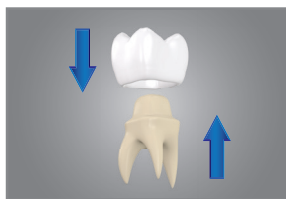
\*\* Varies based on the shade selected.

See page 8 for more product information.

# Conventional Cementation of Metal/PFM/Zirconia Crowns (retentive preps)\*



1. Remove temporary restoration and clean prep with pumice and water. Rinse thoroughly and dry.

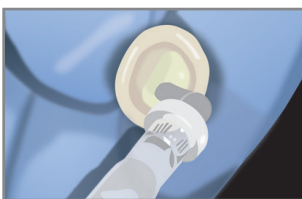


2. Try-in (to check occlusion and fit). After try-in, thoroughly rinse the restoration with water spray and dry.



3. Cover all bonded surfaces of the restoration with a layer of **ZirClean™**. Allow 20 seconds for the cleaning action of **ZirClean** to take effect, then thoroughly rinse with water spray and dry.

NOTE: Sandblast internal surface of restoration if necessary.



4. Dispense **TheraCem®** into the internal surface of the restoration. Seat the restoration with gentle passive pressure and remove any excess cement.

HINT: To aid in the removal of excess cement, initially light-cure the margins for 2-3 seconds.



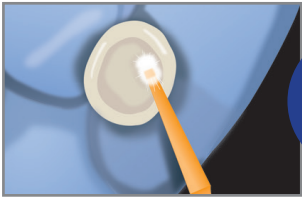
5. Light cure for 20-30 seconds, or allow to self cure.

\* Refer to instructions for complete details.

See page 7 for more product information.



# Bonded Cementation of Inlays/Onlays, Bridges, Crowns (short/tapered preps)\*



OR

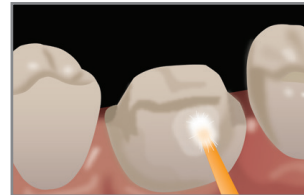
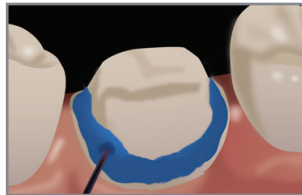
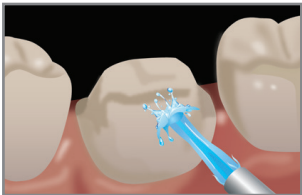


1. Prepare the internal surface of the restoration as instructed by the laboratory:

a. Porcelain/Lithium Disilicate:  
Apply a thin coat of silane (**Porcelain Primer**) to the internal surface. Wait for 30 seconds, or dry with (warm) air.

b. Metal/Zirconia/Indirect Composite: Apply one coat of **Z-Prime™ Plus** to the internal surface of the restoration and air dry for 3-5 seconds.

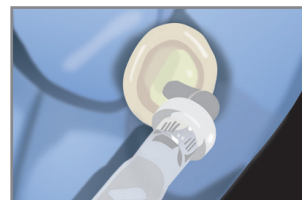
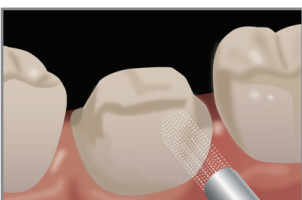
2. Try-in the restoration, then clean the internal surface with (**Uni-Etch® w/BAC/ Select HV® Etch w/BAC**) etchant. Rinse thoroughly.



3. Remove the temporary restoration and clean the prep with **Cavity Cleanser™** and pumice slurry. Rinse thoroughly.

4. If prep includes enamel, selectively etch enamel with **Select HV® Etch w/BAC** for 15 seconds, suction then rinse thoroughly.

5. Dispense **Universal Primer™** and mix (or **All-Bond Universal®**) in a mixing well. Apply 2 separate coats, agitating each coat for 10-15 seconds.



\* Refer to instructions for complete details.

6. Gently air dry until there is no visible movement of the adhesive. Then thoroughly air dry with greater air pressure. The surface should appear shiny, otherwise repeat step 5. Light cure for 10 seconds.

7. Using a dual-cured resin cement (**Duo-Link Universal™** or **zCement® Dual-Cure**), fill the internal surface of the restoration and/or the prep with the cement. Seat with gentle, passive pressure and remove excess cement while holding restoration in place. Allow the cement to self-cure, or light-cure each surface of the tooth for 40 seconds.

See pages 2, 3, 5, and 6 for more product information.

Visit [www.bisco.com](http://www.bisco.com) to learn more about BISCO products.

## ADHESIVES

### [Universal Adhesive \(Self-Etch or Total-Etch\)](#)

All-Bond Universal®

Universal Primer™

### [Self-Etch Adhesive](#)

All-Bond SE®

### [Total-Etch Adhesives](#)

All-Bond 3®

All-Bond 2®

One-Step® & One-Step® Plus

### [Supportive Products](#)

Aqua-Prep™ F

Cavity Cleanser™

ZirClean™

## SEMI-GEL ETCHANTS

Select HV® Etch w/BAC

Etch-37™ w/BAC

Uni-Etch® w/BAC

## COMPOSITES

AELITE™ Aesthetic Enamel

AELITE™ All-Purpose Body

AELITE™ LS Posterior

AELITEFLO™ & AELITEFLO™ LV

BisFil™ 2B

Characterization Tints

Reveal®

REVEAL HD® Bulk

### [Supportive Products](#)

Fortify™

Modeling Resin

## ESTHETIC SEALANT & LIQUID POLISH

BisCover™ LV

## INSTRUMENTS

NB Composite Instruments

## CEMENTATION

Choice™ 2  
Duo-Link Universal™

eCEMENT®

TheraCem®

### Supportive Products

Intraoral Repair Kit

Porcelain Etchant

Porcelain Primer/Bis-Silane™

ZirClean™

Z-Prime™ Plus

## POST & CORE

Core-Flo™ DC

Core-Flo™ DC Lite

D.T. Light-Post®

D.T. Light-Post® Illusion® X-RO®

Light-Core™

## PROVISIONAL MATERIALS

Pro-V®

## PULP CAPPING/LINING MATERIAL

TheraCal LC®

Federal law restricts these devices to sale by or on the order of a licensed Dentist.  
Not all products are available in all countries.





BISCO DENTAL PRODUCTS  
1100 W. Irving Park Rd.  
Schaumburg, IL 60193, USA  
1-800-247-3368 • [www.bisco.com](http://www.bisco.com)

Rx Only

MC-52161CA

Visit us at [www.bisco.com](http://www.bisco.com) for a complete product catalog.