

# Rya by Fibre ⚡ood



# Rya by Fibre Mood



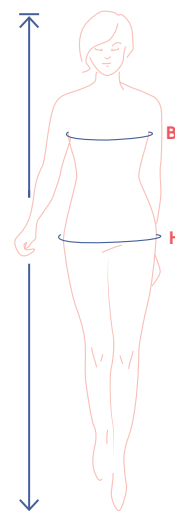
XS - XXXL

Rya is an oversized overshirt. And while the shirt may be long, the time it takes to make this pattern isn't. Follow our instructions, choose a fabric that's easy to work with and the sewing will be a breeze. But it gets better! Rya is basically two garments in one – a long overshirt for over jeans or leggings, or a casual jacket for over a dress or trousers with a tank top. Whatever your fashion plans are, this creation is crazy comfy, with handy hidden side seam pockets and chest patch pockets with flaps.



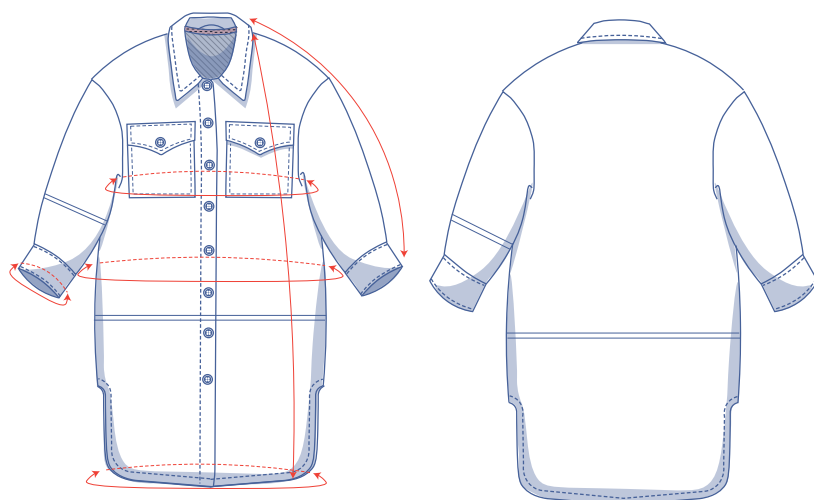
## size chart (in inches)

size	XS		S		M		L		XL		XXL		XXXL		
	0	2	4	6	8	10	12	14	16	18	20	22	24	26	28
body height	5'24"	5'38"	5'45"	5'48"	5'51"	5'54"	5'58"	5'61"	5'64"	5'64"	5'64"	5'64"	5'64"	5'64"	5'64"
B (bust)	29.9	31.5	33.1	34.6	36.2	37.8	39.4	40.9	43.3	45.7	48	50.4	52.8	55.1	57.5
H (hips)	33.9	35.4	37	38.2	39.4	40.6	41.7	42.9	45.3	47.2	49.2	51.2	53.1	55.1	57.1



Choose your size based on your bust measurement. If your hip measurements are wider than those in the size chart, check the hip measurements in the chart below to see if there's enough room or whether the pattern needs to be altered. It's easy to do. Simply trace the line of the one size instead of the other.

## pattern measurements (in inches)



== shorten or lengthen the pattern here

This chart's measurements are the pattern measurements based on the fabric type and serve as a reference. Ease has been added to the width measurements (in addition to the exact body measurements) for a more comfortable fit. Rya is designed to be oversized. Depending on the preferred cut, you could decide to go a size smaller or larger than the recommended size.

Compare the stated lengths to the measured or desired lengths. **Lengthen** or **shorten** the shirt and/or sleeves by cutting the pattern pieces at the indicated double lines. Then either increase the distance between the cut pieces by the desired amount (to lengthen), or overlap the pieces (to shorten). Make sure that the CF and CB lines and the side seams are always straight.

size	XS	S	M	L	XL	XXL	XXXL
length	45.1	45.6	46	46.8	47.9	48.9	49.5
sleeve length*	27.7	28.4	29	29.7	30.4	31.1	31.8
bust	44	47.2	50.3	53.5	57.4	62.1	66.8
hips	43.1	46.3	49.4	52.7	56.7	61.6	66.3
hem circumference	42.2	45.4	48.5	51.9	55.8	60.7	65.5
cuff circumference	12.6	13	13.4	13.8	14.2	14.6	15

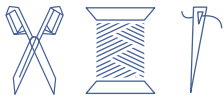
\*\*Including the shoulder length and cuff.

### IMPORTANT

Adjust the amount of fabric to be used based on these alterations.



## notions



- Thread
- Iron-on interfacing: max. 1.2 yd
- Lining fabric: max. 2/5 yd
- Buttons (Ø 7/8"): 10
- Double fold bias tape (width 1/4"): see table
- Fabric: see table

bias tape		XS	S	M	L	XL	XXL	XXXL
neckline	yd	0.51	0.52	0.52	0.53	0.54	0.54	0.55
chest pocket (2x)	yd	0.23	0.23	0.23	0.23	0.23	0.23	0.23
hem	yd	2	2.09	2.18	2.27	2.38	2.52	2.65
<b>total</b>	yd	<b>2.97</b>	<b>3.07</b>	<b>3.16</b>	<b>3.26</b>	<b>3.38</b>	<b>3.52</b>	<b>3.66</b>

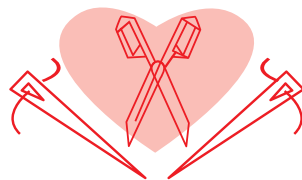
fabric		XS	S	M	L	XL	XXL	XXXL
fabric width 43"	yd	3 1/2	3 1/2	3 1/2	4 1/4	4 1/2	4 3/4	4 3/4
fabric width 55"	yd	2 1/2	2 3/4	2 3/4	3 1/4	3 1/4	3 1/4	3 1/2

The corresponding fabric layout can be found on page 6 of these sewing instructions.

**fabric advice** Rya works well in all kinds of different fabrics, from woven jacquard, to felt and flannel, etc.



# Proud to be #Sewista



## pattern pieces & seam allowances (in inches)

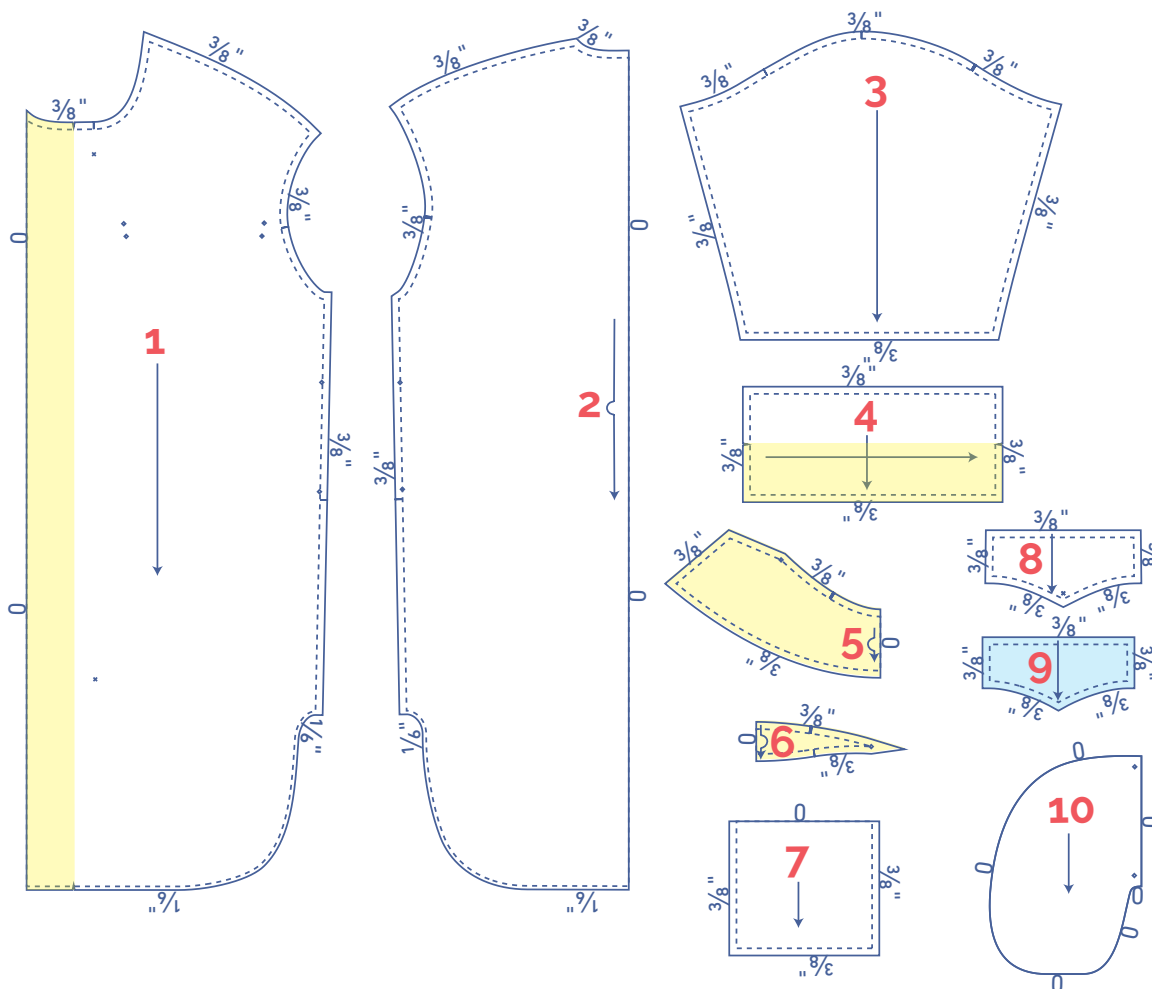
To sew the garment as described in the instructions, you need to draw the illustrated seam allowances around the paper pattern pieces before cutting them out. If you are using a PDF pattern, the pattern can be printed with or without seam allowances.

To find out more, check out the [video](#).

1. front: 2x
2. back: 1x on fabric fold
3. sleeve: 2x
4. cuff: 2x
5. collar: 2x on fabric fold
6. collar band: 2x on fabric fold
7. chest pocket: 2x
8. flap: 2x
9. flap lining: 2x
10. pocket: 4x

**IMPORTANT**

The pieces highlighted in light yellow have iron-on interfacing attached to the wrong side.

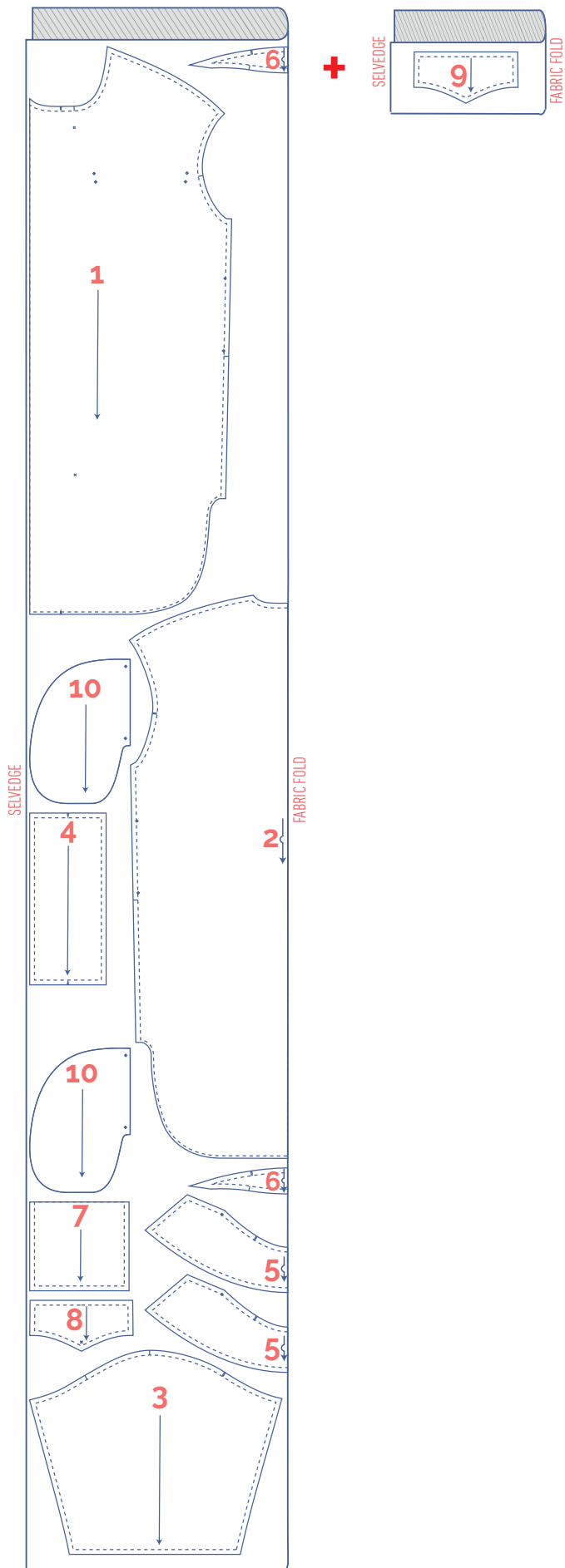


**TIP!** If you are using a thick fabric, the pocket pieces (10) can be cut from lining.

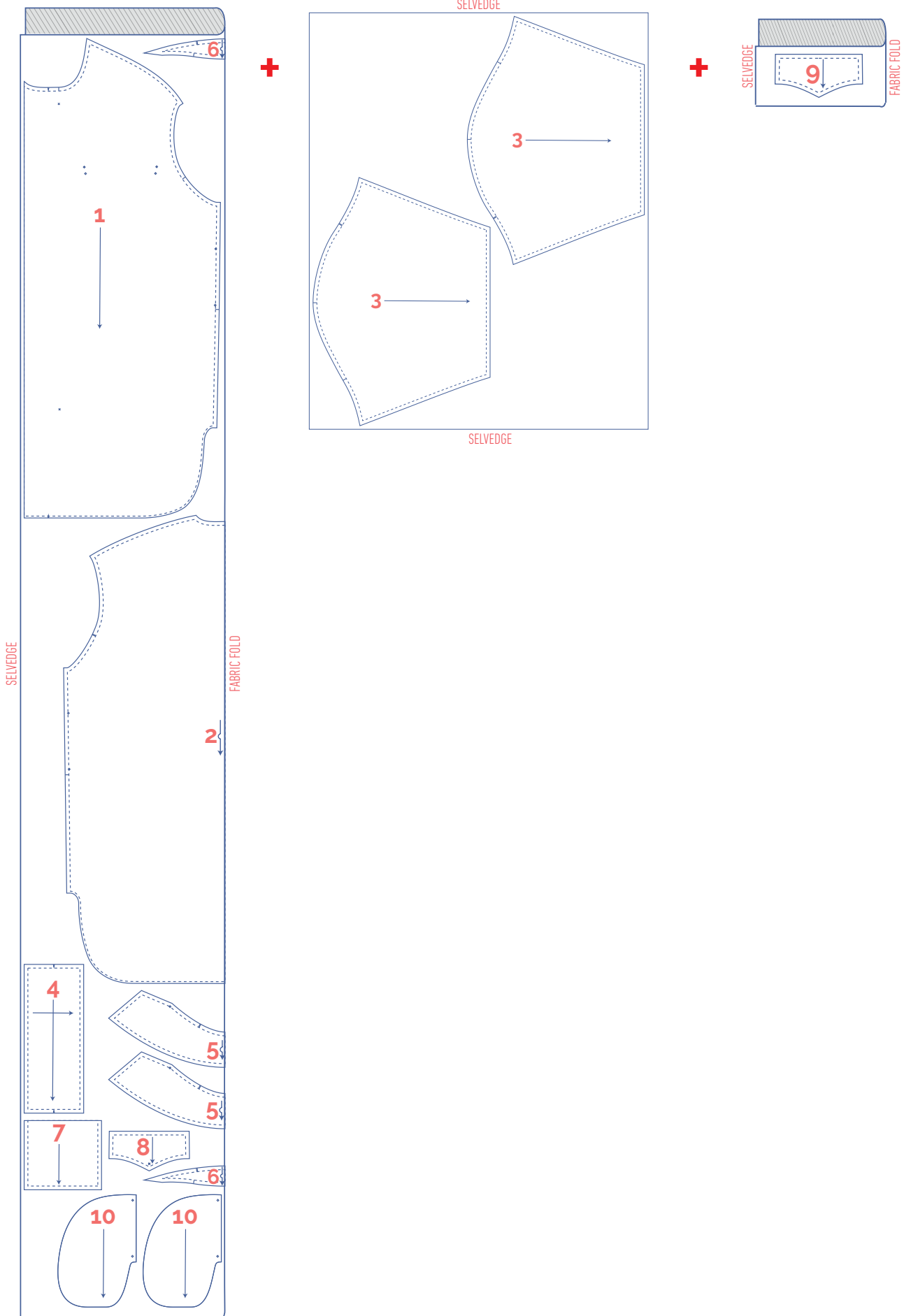
	material type
	fabric
	iron-on interfacing
	lining

**fabric layout – solid fabrics**  
**fabric width 43"**

XS - M



L - XXXL

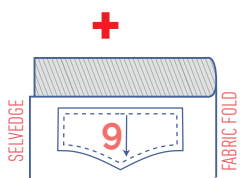
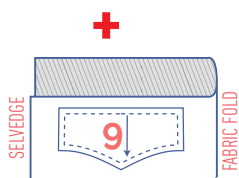
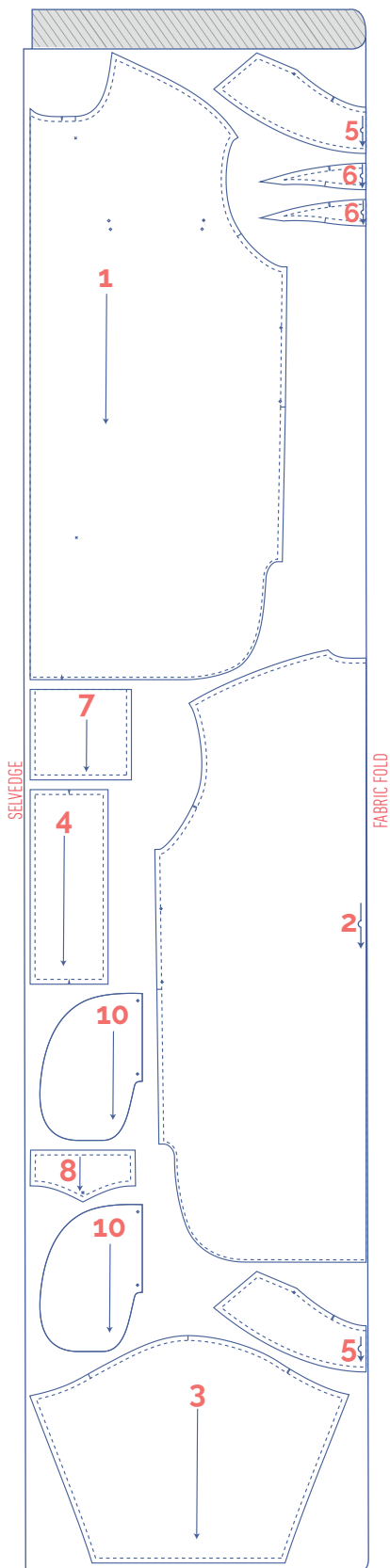
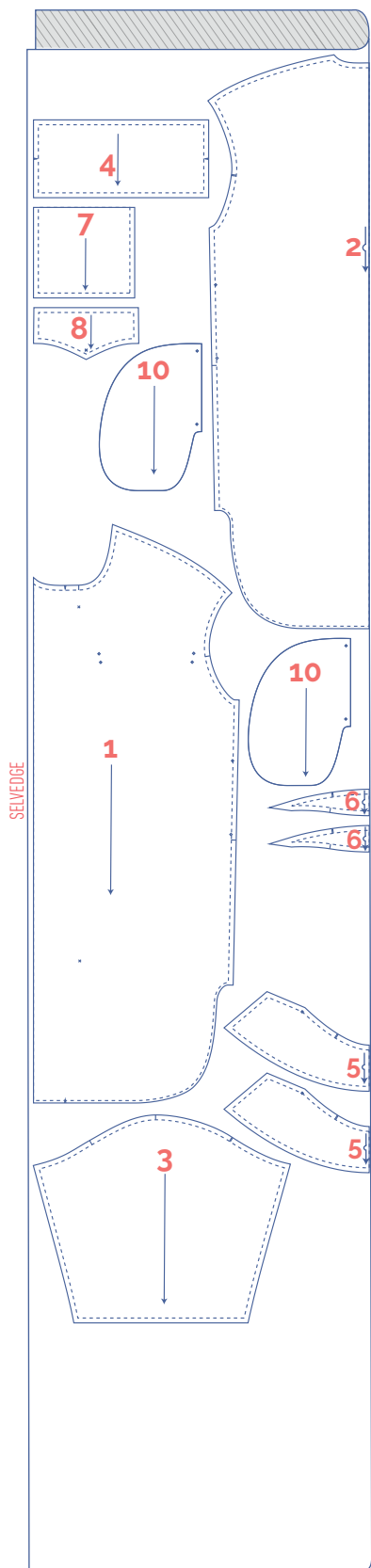


# fabric layout – solid fabrics

## fabric width 55"

XS - M

L - XXXL



### marking pattern pieces



Notch the pattern paper and fabric at the following points

| single notch

|| double notch

V V notch



Mark the following points using marking thread

◇ centre point

X snap/button

↪ buttonhole



# sewing instructions



The method used to finish the seams depends on the fabric used. The pieces are always sewn together with the right sides of the fabric facing, unless stated otherwise.

F front

B back

LF left front

CF centre front

CB centre back

 right side

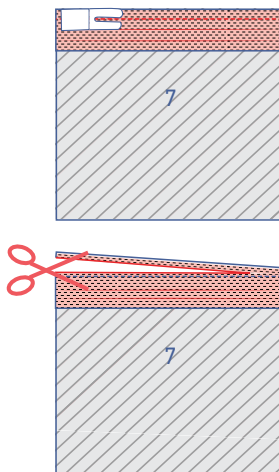
 wrong side

 lining right side

 lining wrong side

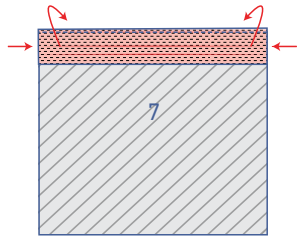
 iron-on interfacing

 bias tape

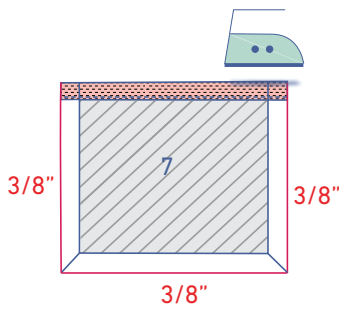
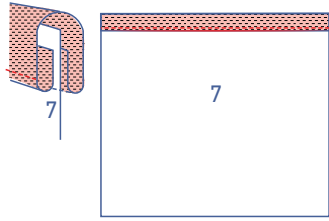


**1**

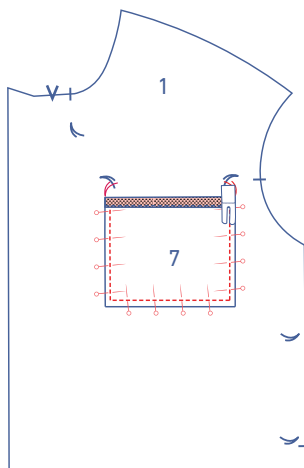
Finish the top of the chest pocket (7) as follows: pin the unfolded bias tape for the pocket to the wrong side of the chest pocket and sew into place along the first fold line. Trim the seam allowance if necessary.



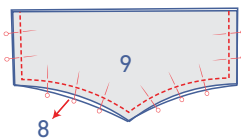
Fold the bias tape over towards the right side of the chest pocket along the centre fold line. Tuck the raw edge under at the last fold line, and place the last fold line over previous stitching and sew into place right next to the edge.



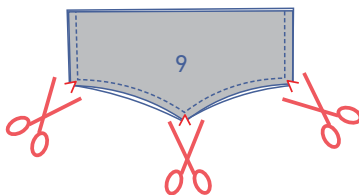
Press the rest of the pocket ends  $\frac{3}{8}$ " over towards the wrong side.



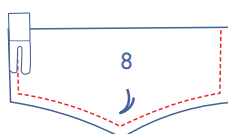
Pin the pocket to the front (1) where indicated. Sew into place at presser foot width.



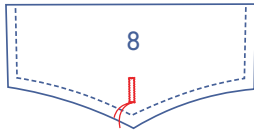
Pin and sew the indicated edges of the flap pieces (8) and flap lining (9) together.



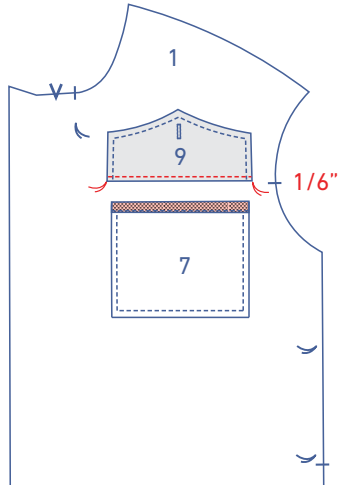
Trim the seam allowance from the tips.



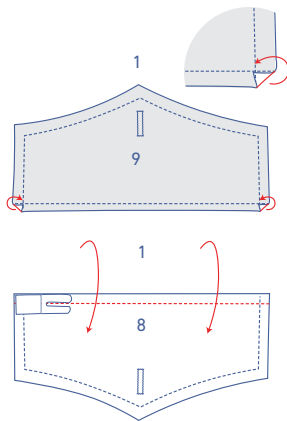
Turn the right way out. Topstitch at presser foot width from the edge.



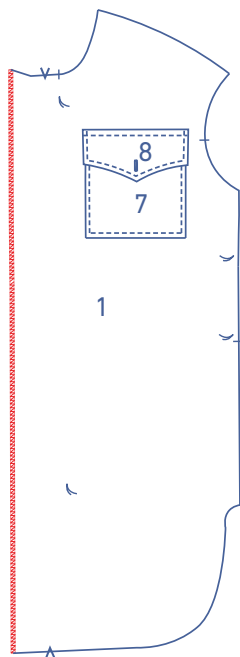
Make a vertical buttonhole where indicated.



Match the raw edges of the flap to the marking threads highlighted in red. The flap should be facing up. Sew into place at 1/6".

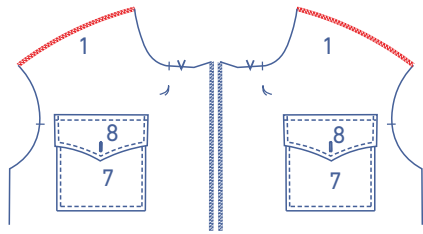


Fold the corners in and fold the flap down. Sew into place at presser foot width.

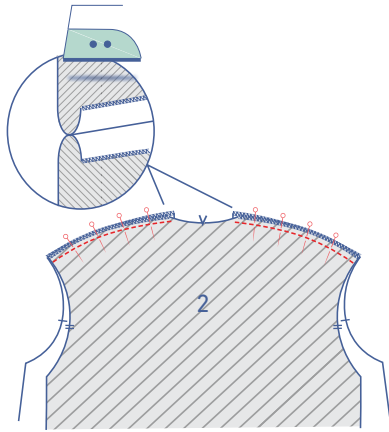
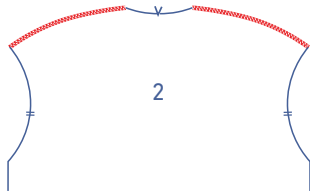


## 2

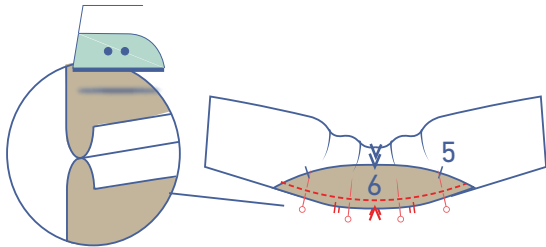
Overlock the indicated part of the front at the CF.



Finish the shoulder seams of the front and back (2) with overlock stitching.

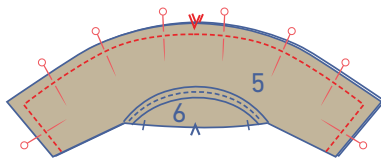


Pin and sew the shoulder seams together and press the seam allowance open.

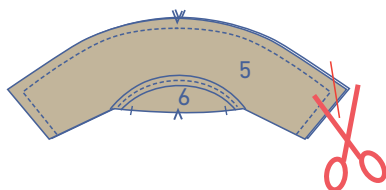


### 3

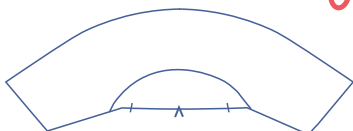
Pin and sew 1 collar (5) to 1 collar band (6) with the notches matching. Press the seam allowance open.

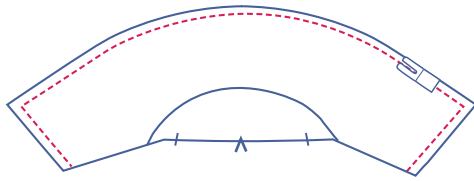


Pin and sew the contours of the collars to each other, except for the bottom.

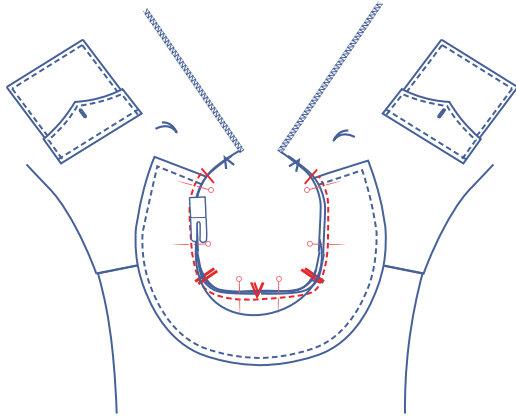


Trim the seam allowance from the corners. Turn the right way out.

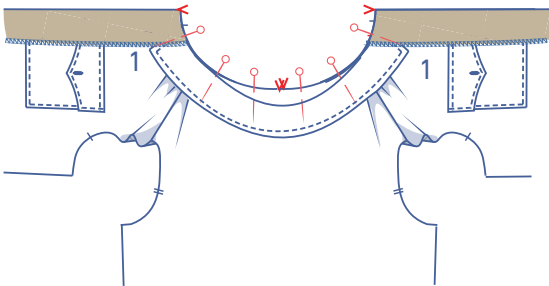




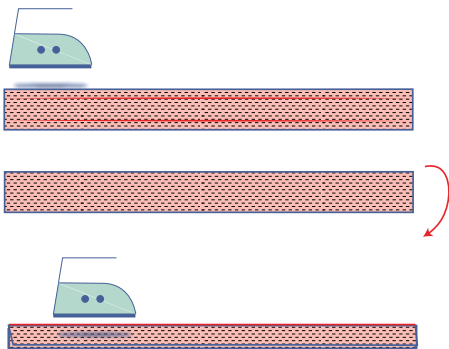
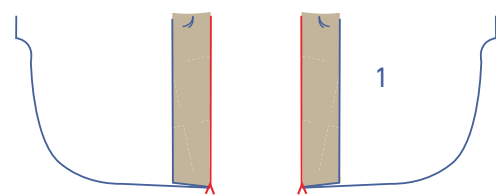
Topstitch all the way around at presser foot width from the edge.



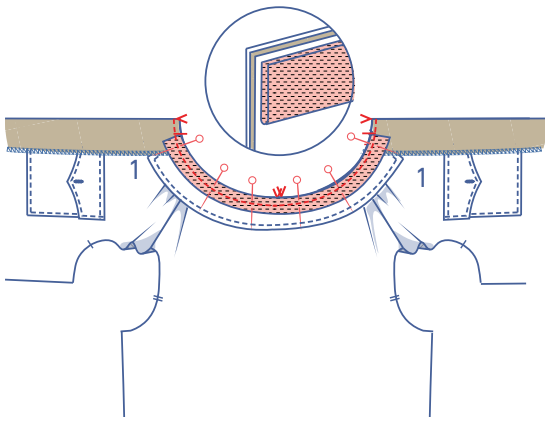
Pin both raw edges of the bottom of the collar + collar band to the neckline along the right side of the garment, matching the V notches. The finished ends of the collar should match the single CF notches, while the notches on the collar band should be even with the shoulder seams, and both V notches indicating the CB should match.



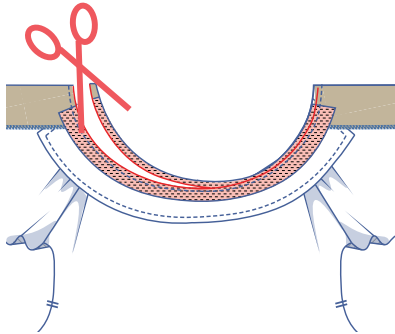
At the V notches at the top and bottom, fold the interfaced facing of the front over towards the right side (the collar should now be sandwiched between the front and the facing). Pin into place.



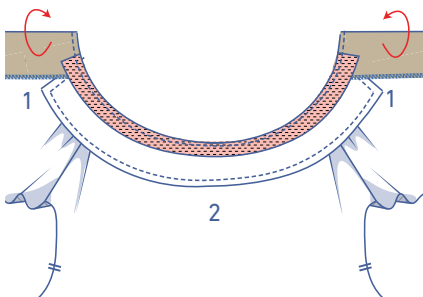
Open out the pre-pressed fold lines of the neckline bias tape and press flat. Next, press the bias tape in half lengthwise with the wrong sides of the fabric touching.



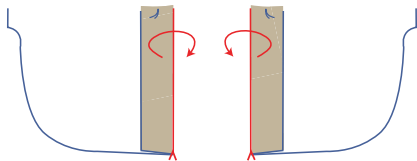
Line up the unfinished raw edges of the bias tape with the neckline. The bias tape should be at the top of the collar and the folded interfaced part of the front. Pin and sew the neckline together.



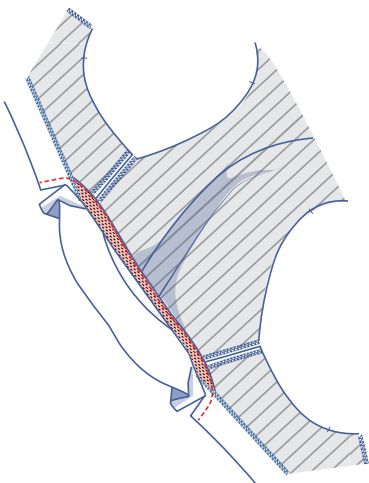
Trim the seam allowance a little.

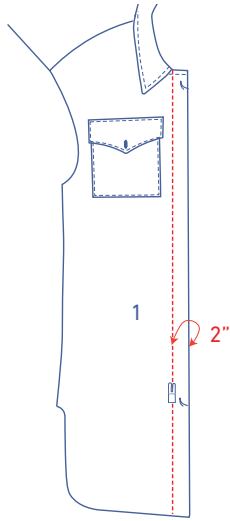


Turn the interfaced side onto the wrong side at the V notches on the top and bottom. Fold the bias tape over the seam allowance of the neckline.

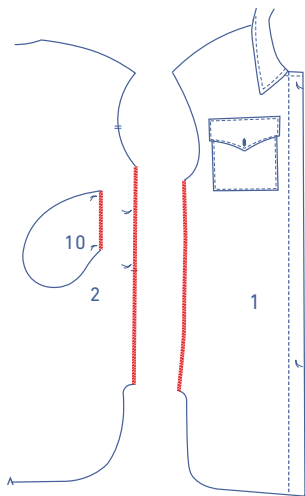


Sew the bias tape into place right next to the fold line. Continue stitching up to the CF.



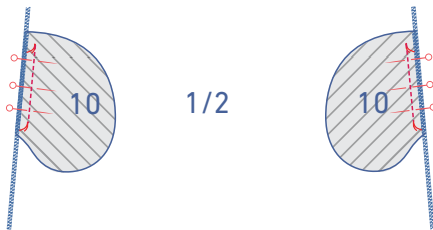


Sew the facing into place at 2" from the folded edge.

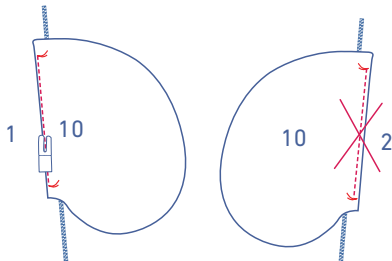


## 4

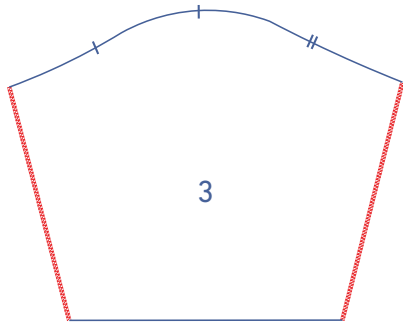
Finish the straight end of the pocket pieces (10) and the side seams (front and back) with overlock stitching.



Pin the straight edge of the pocket to the side seam of the front and back with marking threads matching. Sew into place between the marking threads.

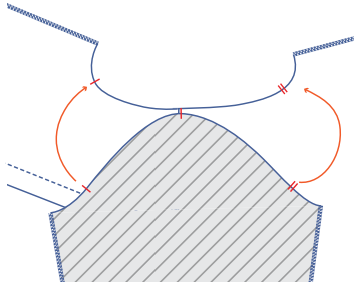


Fold the pocket of the front and the seam allowance over and sew the pocket to the seam allowance underneath. (You will omit this step for the pocket of the back.)

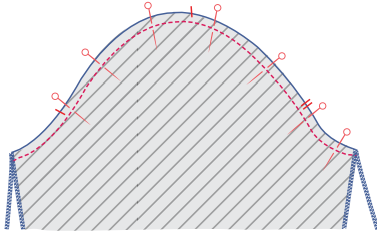


## 5

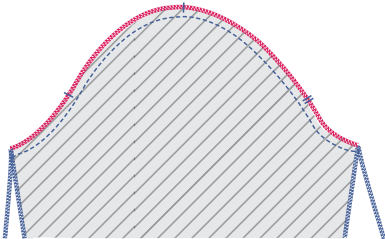
Finish the sides of the sleeve (3) with overlock stitching.



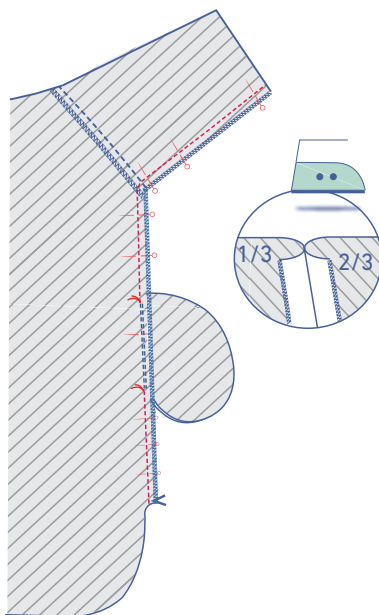
Pin and sew the sleeve cap to the armhole, matching the notches. The single notch indicates the front, the double notch indicates the back, and the top notch on the sleeve aligns with the shoulder seam.



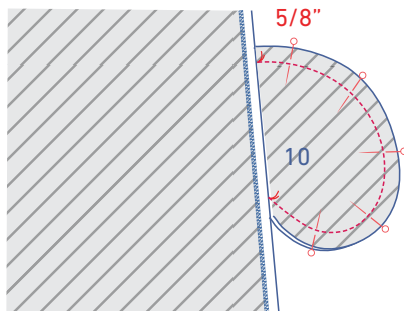
Finish the raw edges together with overlock stitching.



Next, pin and sew the underarm and side seams. Sew into place right up to the marking thread that marks the top of the pocket opening. Now, stitch from the next marking thread up to the hem. Press the seam allowance open.





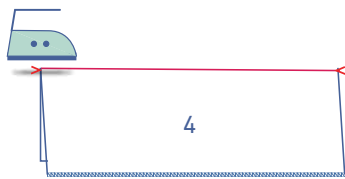


Pin both pocket pieces together and sew into place at  $\frac{5}{8}$ ". Move the seam allowances of the front and back out of the way so that you can sew up to the marking threads.

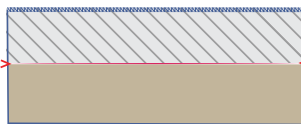


## 6

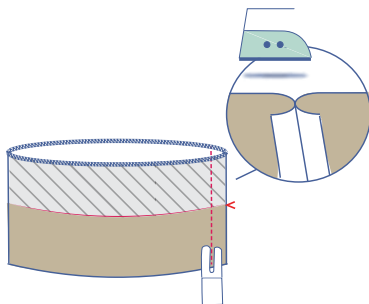
Finish the long end of the cuff (4) with overlock stitching.



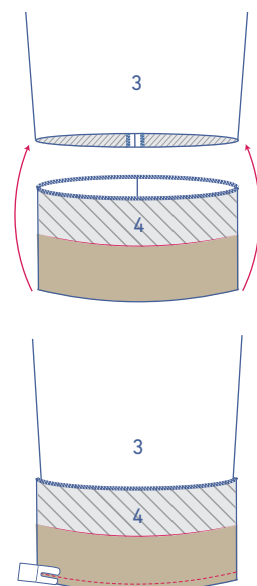
Fold the cuff (4) in half lengthwise with the wrong sides of the fabric touching to create a fold line. Open back out.

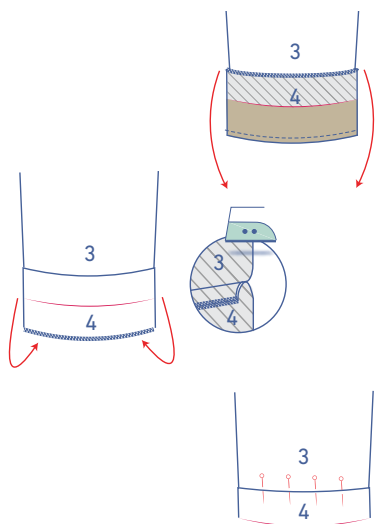


Fold the cuff in half crosswise with the right sides of the fabric facing. Pin and sew the short ends closed. Press the seam allowance open.

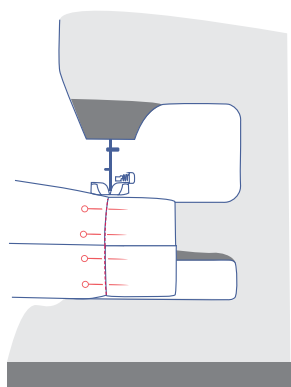


Slide the cuff over the sleeve and ensure the unfinished cuff edge (i.e. not overlocked) aligns with the raw edge of the sleeve. Pin and sew into place.

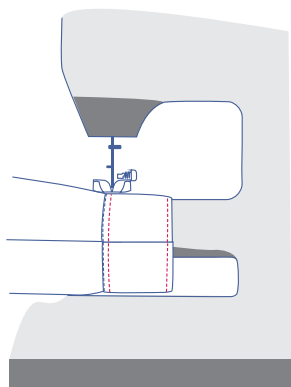




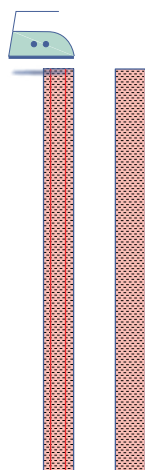
Fold the cuff down at the pre-pressed fold line so the overlapped edge is on the wrong side of the sleeve. Press the seam allowance towards the cuff. Lay the cuff neatly flat and pin into place on the right side of the garment.



Stitch the cuff into place all the way around along the lapped seam.

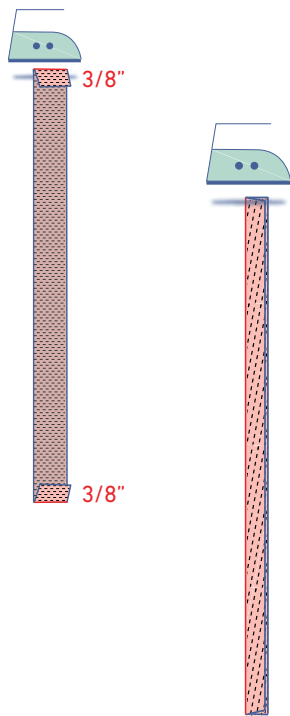


Topstitch at presser foot width from the lapped seam and edgestitch along the bottom of the cuff.



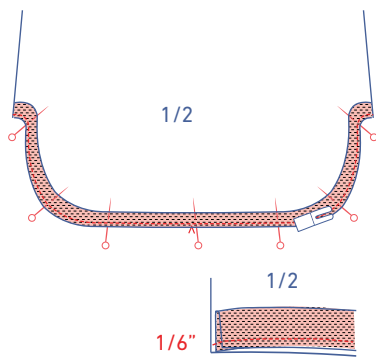
## 7

Open the bias tape for the hemline all the way out and press.

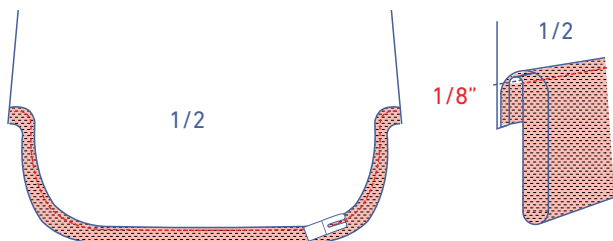


Press the short ends  $\frac{3}{8}$ " over towards the wrong side.

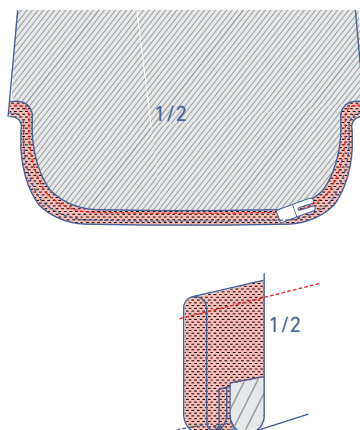
Press the bias tape in half lengthwise with the wrong sides of the fabric facing.



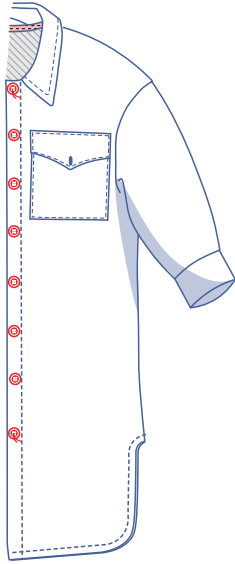
Pin and sew the raw edges of the bias tape to the hem along the right side of the garment.



Fold the bias tape and the seam allowance to the side and sew the bias tape into place right next to the seam through all layers (= bias tape + underlying seam allowance).

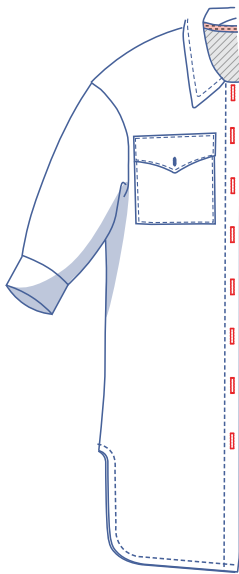


Fold the bias tape all the way over to the wrong side and edgestitch into place.

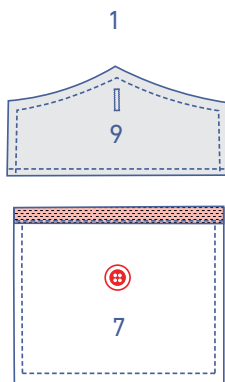


## 8

Sew the buttons onto the LF. The top and bottom buttons have been marked on the pattern. Divide the distance between these 2 buttons evenly to determine the location of the other buttons.



Make vertical buttonholes in the RF.



Sew the buttons to the chest pockets to match the buttonholes on the flaps.