

# Sky Park Business Center

9210 & 9265 Sky Park Court, San Diego, CA 92123

[Home](#)

[Project Features](#)

[Site Plans](#)

[Floor Plans](#)

[Location](#)

[Amenities Aerial](#)

[Contact](#)



# Sky Park Business Center

9210 & 9265 Sky Park Court, San Diego, CA 92123

[Home](#)

[Project Features](#)

[Site Plans](#)

[Floor Plans](#)

[Location](#)

[Amenities Aerial](#)

[Contact](#)

Suite	Size	Available	Rate
<b>9210 Sky Park Court</b>			
Suite 220	4,738 SF	Now	\$1.95 + Util.
<b>9265 Sky Park Court</b>			
Suite 250	6,085 SF	Now	\$1.95 + Util.
* Suite 250 is divisible			

## PROJECT FEATURES:

- » Newly remodeled common areas and upgraded mechanical infrastructure
- » Highly visible building top and monument signage available
- » Efficient and functional existing improvements which can be modified to suit specific tenant requirements
- » 3.8/1000 parking ratio plus abundant on street parking
- » Common area shower and locker facilities
- » On-site deli located at 9265 Sky Park Court with additional eating establishments located within walking distance
- » High image, 2-story office buildings totaling approximately 83,405 square feet
- » Two building project situated in a prestigious cul-de-sac location
- » Public transportation located within short walking distance
- » Central to all San Diego amenities and business services – hotels, restaurants, airports and retail
- » Hands-on ownership with the ability to accommodate long and short term tenant requirements



**ROB MERKIN**  
Lic. 00881080  
+1 858 546 4629  
rob.merkin@cbre.com

**MATT NICKELS**  
Lic. 01432593  
+1 858 646 4707  
matt.nickels@cbre.com

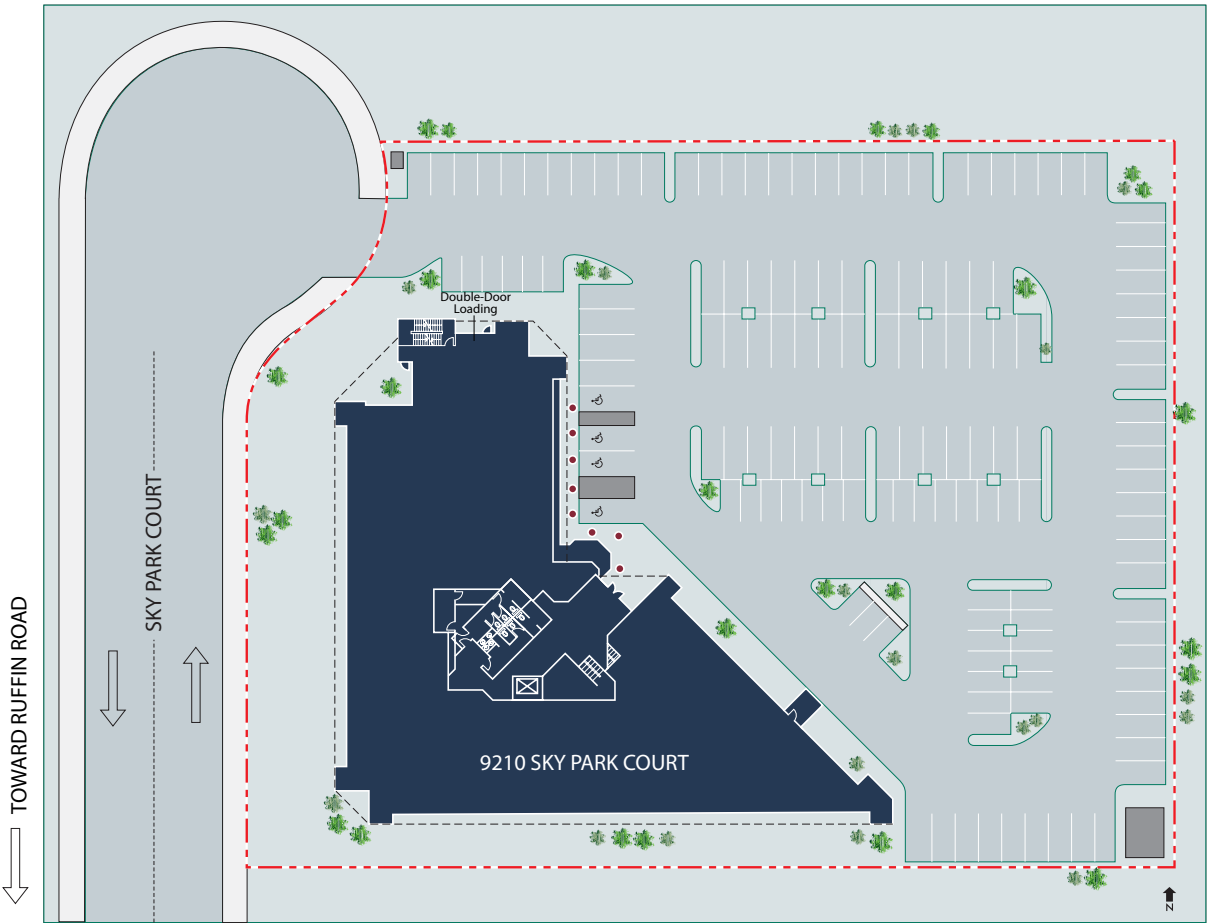


# Sky Park Business Center

9210 & 9265 Sky Park Court, San Diego, CA 92123

- [Home](#)
- [Project Features](#)
- [Site Plans](#)
- [Floor Plans](#)
- [Location](#)
- [Amenities Aerial](#)
- [Contact](#)

← Toward 9265 Sky Park



**ROB MERKIN**  
Lic. 00881080  
+1 858 546 4629  
rob.merkin@cbre.com

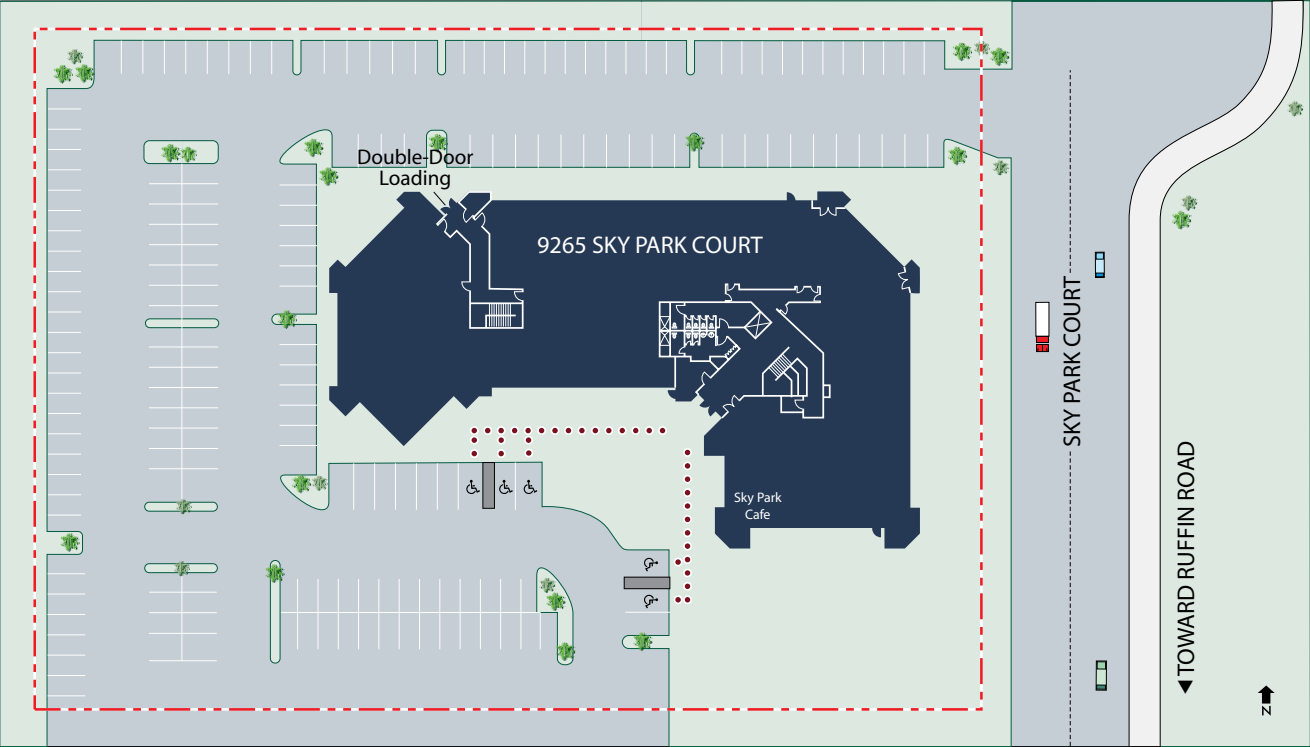
**MATT NICKELS**  
Lic. 01432593  
+1 858 646 4707  
matt.nickels@cbre.com



# Sky Park Business Center

9210 & 9265 Sky Park Court, San Diego, CA 92123

- [Home](#)
- [Project Features](#)
- [Site Plans](#)
- [Floor Plans](#)
- [Location](#)
- [Amenities Aerial](#)
- [Contact](#)



Toward 9210 Sky Park →



**ROB MERKIN**  
Lic. 00881080  
+1 858 546 4629  
rob.merkin@cbre.com

**MATT NICKELS**  
Lic. 01432593  
+1 858 646 4707  
matt.nickels@cbre.com

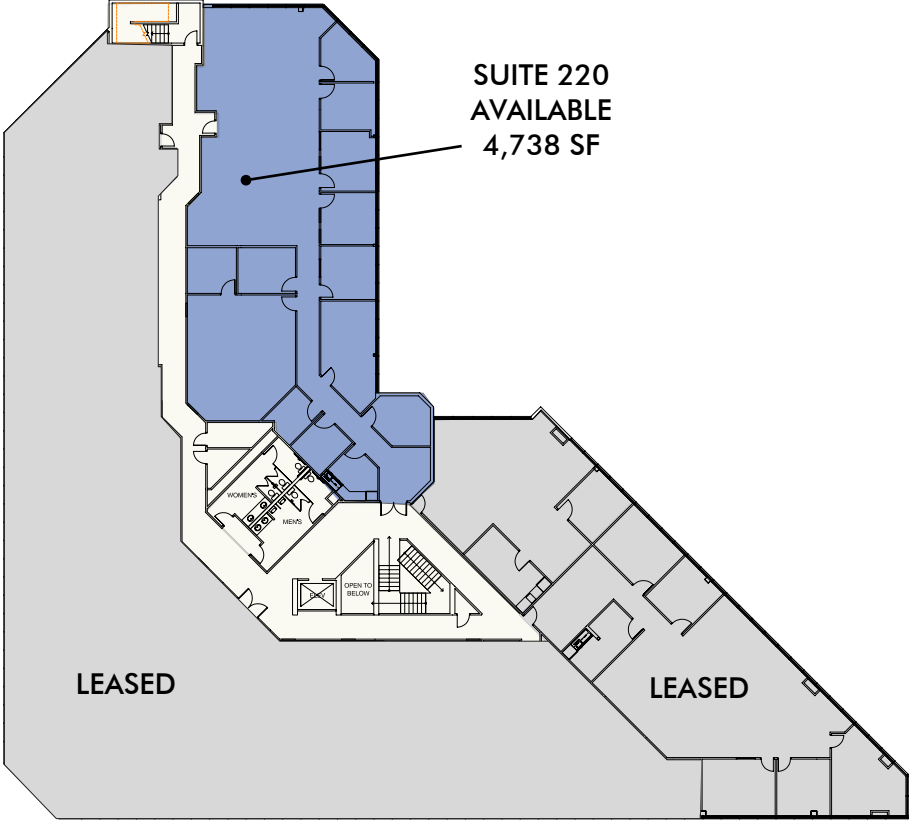


# Sky Park Business Center

9210 & 9265 Sky Park Court, San Diego, CA 92123

- [Home](#)
- [Project Features](#)
- [Site Plans](#)
- [Floor Plans](#)
- [Location](#)
- [Amenities Aerial](#)
- [Contact](#)

## 9210 SKY PARK COURT



**2ND FLOOR - 9,371 SF (DIVISIBLE)  
AVAILABLE IN INCREMENTS OF 1,507 SF, 3,126 SF, 4,738 SF  
OR A COMBINATION THEREOF**



**ROB MERKIN**  
Lic. 00881080  
+1 858 546 4629  
rob.merkin@cbre.com

**MATT NICKELS**  
Lic. 01432593  
+1 858 646 4707  
matt.nickels@cbre.com



# Sky Park Business Center

9210 & 9265 Sky Park Court, San Diego, CA 92123

[Home](#)

[Project Features](#)

[Site Plans](#)

[Floor Plans](#)

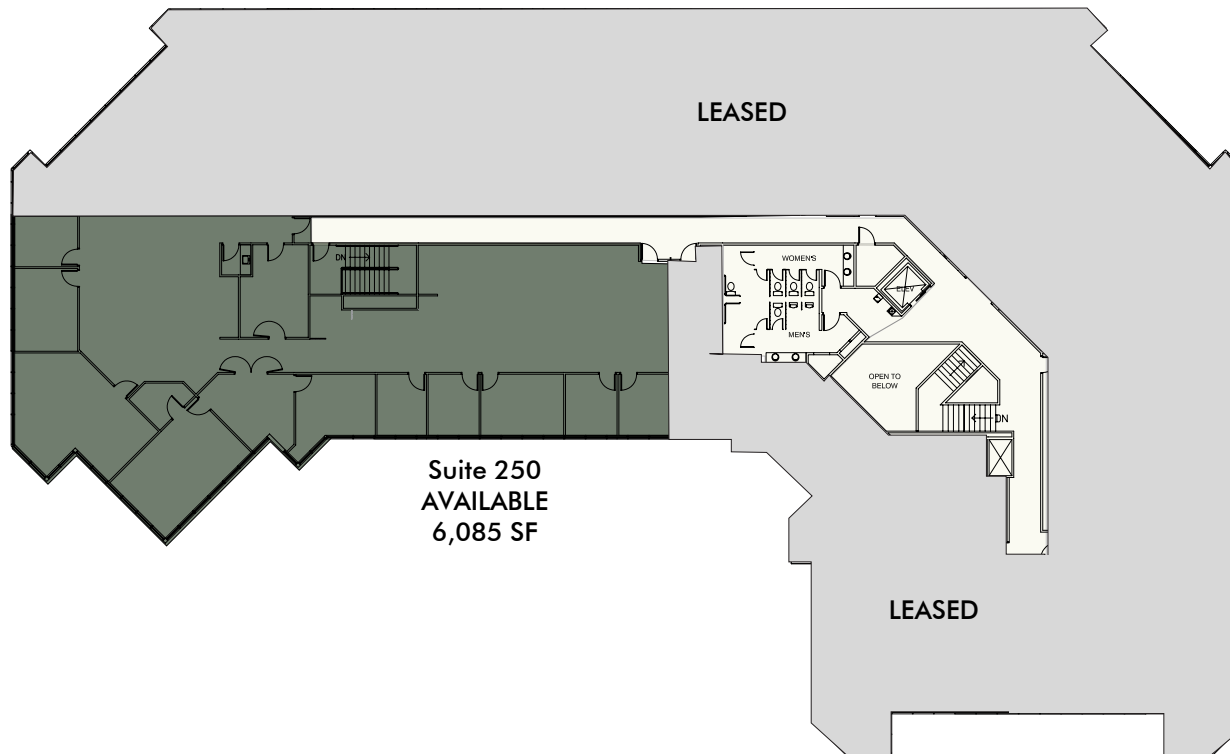
[Location](#)

[Amenities Aerial](#)

[Contact](#)

## 9265 SKY PARK COURT

**2ND FLOOR  
SUITE 250 - 6,085 SF  
(DIVISIBLE)**



**ROB MERKIN**  
Lic. 00881080  
+1 858 546 4629  
rob.merkin@cbre.com

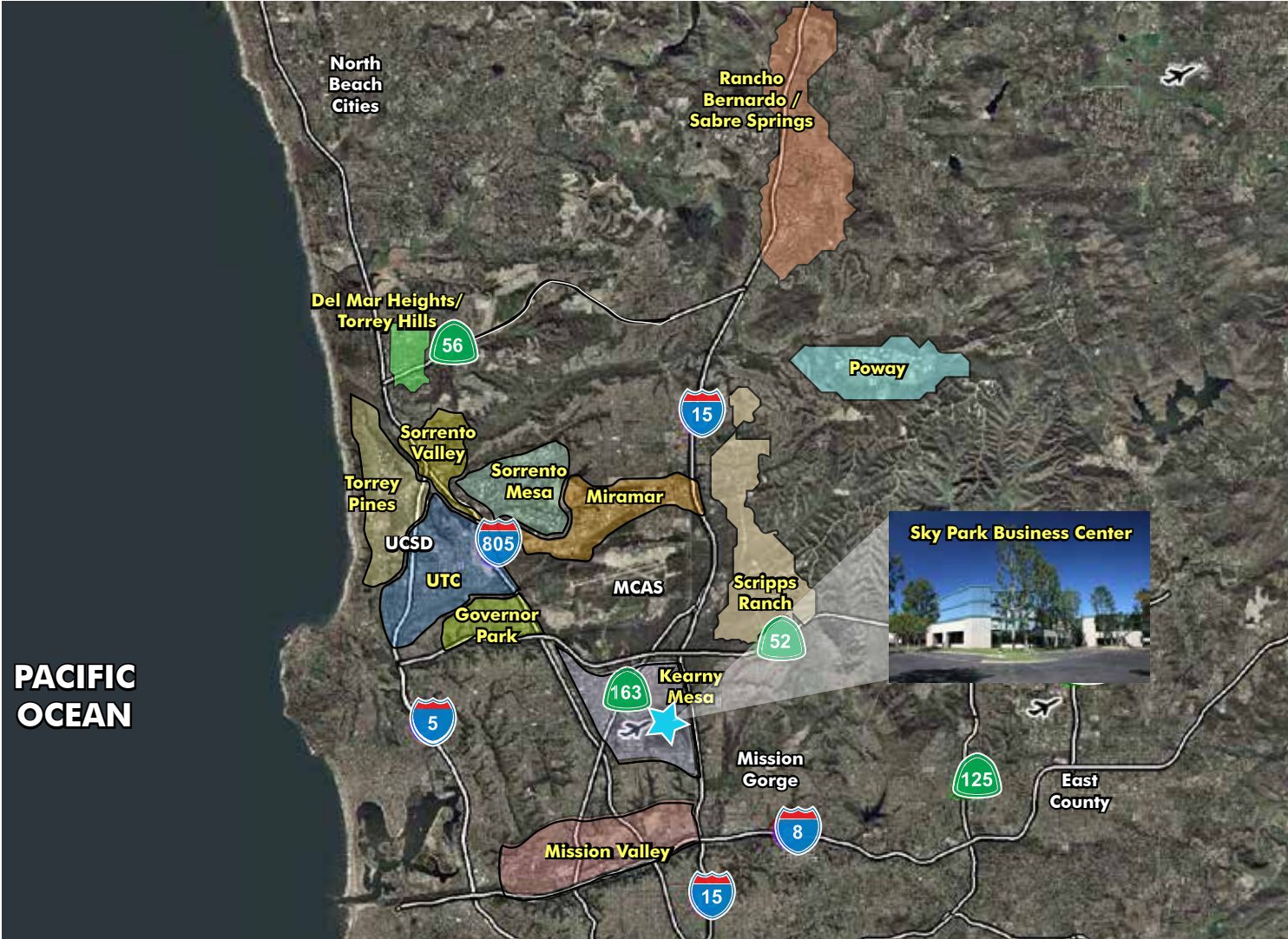
**MATT NICKELS**  
Lic. 01432593  
+1 858 646 4707  
matt.nickels@cbre.com



# Sky Park Business Center

9210 & 9265 Sky Park Court, San Diego, CA 92123

- [Home](#)
- [Project Features](#)
- [Site Plans](#)
- [Floor Plans](#)
- [Location](#)
- [Amenities Aerial](#)
- [Contact](#)



**ROB MERKIN**  
Lic. 00881080  
+1 858 546 4629  
rob.merkin@cbre.com

**MATT NICKELS**  
Lic. 01432593  
+1 858 646 4707  
matt.nickels@cbre.com



# Sky Park Business Center

9210 & 9265 Sky Park Court, San Diego, CA 92123

- [Home](#)
- [Project Features](#)
- [Site Plans](#)
- [Floor Plans](#)
- [Location](#)
- [Amenities Aerial](#)
- [Contact](#)



- San Diego Spectrum**
- ARCO • Boll Weevil • Butcher Shop
  - California Coast Credit Union • Carl's Jr.
  - Cort Furniture Rental • County Assessor's Office
  - Denny's • Dlux Cleaners • Filippi's • H & R Block
  - Jack in the Box • La Salsa • Marriott • McDonald's
  - Nextel • North Island Credit Union • Panda Express
  - Red Brick Pizza • Robeks • Ruby's Cafe
  - San Diego Municipal Courthouse • Starbucks
  - Subway • Taco Bell • The Spice Cafe • Togo's
  - US Bank • Wells Fargo • Wendy's • YMCA



**ROB MERKIN**  
 Lic. 00881080  
 +1 858 546 4629  
 rob.merkin@cbre.com

**MATT NICKELS**  
 Lic. 01432593  
 +1 858 646 4707  
 matt.nickels@cbre.com





# Sky Park Business Center

9210 & 9265 Sky Park Court, San Diego, CA 92123

[Home](#)

[Project Features](#)

[Site Plans](#)

[Floor Plans](#)

[Location](#)

[Amenities Aerial](#)

[Contact](#)

FOR FURTHER INFORMATION, PLEASE CONTACT:

## ROB MERKIN

Lic. 00881080

+1 858 546 4629

[rob.merkin@cbre.com](mailto:rob.merkin@cbre.com)

## MATT NICKELS

Lic. 01432593

+1 858 646 4707

[matt.nickels@cbre.com](mailto:matt.nickels@cbre.com)

CBRE, Inc.

4365 Executive Drive, Suite 1600

San Diego, California 92121

+1 858 546 4600

+1 858 546 4697 fax

[www.cbre.com](http://www.cbre.com)

## ABOUT OMNINET

Omninet Capital, LLC, is a diversified investment firm specializing in commercial real estate. The Omninet team is composed of experienced real estate operators and currently manages over 4 million square feet of commercial space across the country.

Omninet's mission is to provide each of its tenants a seamless tenancy so they are free to focus on the success of their own business. As a privately owned company with hands-on principals, Omninet has the ability to provide tenants with direct access to its senior management team. This ensures its tenants a fast response time with a personal touch.

© 2014 CBRE, Inc. The information contained in this document has been obtained from sources believed reliable. While CBRE, Inc. does not doubt its accuracy, CBRE, Inc. has not verified it and makes no guarantee, warranty or representation about it. It is your responsibility to independently confirm its accuracy and completeness. Any projections, opinions, assumptions or estimates used are for example only and do not represent the current or future performance of the property. The value of this transaction to you depends on tax and other factors which should be evaluated by your tax, financial and legal advisors. You and your advisors should conduct a careful, independent investigation of the property to determine to your satisfaction the suitability of the property for your needs. CBRE and the CBRE logo are service marks of CBRE, Inc. and/or its affiliated or related companies in the United States and other countries. All other marks displayed on this document are the property of their respective owners. Photos herein are the property of their respective owners and use of these images without the express written consent of the owner is prohibited.



**ROB MERKIN**

Lic. 00881080

+1 858 546 4629

[rob.merkin@cbre.com](mailto:rob.merkin@cbre.com)

**MATT NICKELS**

Lic. 01432593

+1 858 646 4707

[matt.nickels@cbre.com](mailto:matt.nickels@cbre.com)

