

# S450 | S510 | S530

SKID STEER LOADERS K-Series M-Series R-Series

Europe



***One Tough Animal***

# ONE TOUGH ANIM

---

## ► OUR MISSION

We empower operators to accomplish more, while working in the toughest conditions and tightest situations. When our customers have the will, we provide the way.

# INTRODUCTION



## ► ABOUT BOBCAT

In 1958, Melroe Manufacturing Company introduced a compact front-end loader that evolved quickly into the M400, the world's first true skid steer loader. The company soon adopted what became the world-famous 'Bobcat' brand – and its success paved the way for the global compact equipment industry we know today.

## ► INNOVATION CENTER IN DOBŘÍŠ

New technologies and machines are rigorously tested to take on the toughest jobs.



## ► BOBCAT TODAY

With over 60 years of experience in manufacturing and continuously improving the world's most popular loaders, we've shipped over 1 million machines to the market. Our loaders are synonymous with high performance, reliability and unmatched comfort.





# BUILT AROUND THE OPERATOR

## ► SUPERIOR POWER IN A COMPACT PACKAGE

The Bobcat M-Series provide a best-in-class mix of performance and portability with future-proof Stage V engines, ensuring high levels of operator comfort, intuitive controls and maximum uptime thanks to their robust construction.

Pressurized enclosed cab with heating and air conditioning

ROPS/FOPS protection

Selectable Joystick Controls

High-flow option

Hydraulic power Bob-Tach™ option

Over 100 attachments for any kind of job  
**P.16**

Bucket positioning



## ► COMPACT SIZE

Easy to transport and able to work even in the tightest spaces.



## ► UNMATCHED COMFORT

Pressurized cab to keep dust out, optional air conditioning and several seat options.

**P.8**



#### ► MAXIMUM UPTIME

A reliable, time-proven design and easy maintenance thanks to 60 years of innovation.

**P.10**



#### ► POWER AND EFFICIENCY

Easy operation and low fuel consumption thanks to high torque engines.

**P.7**







# PERFORMANCE



## ► HIGH PERFORMANCE AT YOUR FINGERTIPS

Thanks to advanced features such as high-flow for using a variety of attachments, auto ride control for increased comfort and less spillage, or reverse fan for work in dusty environments.

## ► NEW STAGE V ENGINES

Combining high power with compact size, the new Bobcat Stage V engines redefine expectations thanks to 37% higher torque at lower RPM, fast recovery from overload, less noise and low fuel consumption.



# LIFT PATTERNS TO MATCH YOUR NEEDS

## ► RADIAL

A cost-effective option, ideal for ground-level attachments with basic lift capability for everyday jobs.



## ► VERTICAL

Higher lift, increased forward reach at maximum height, and greater lift capacity for demanding applications and environments.

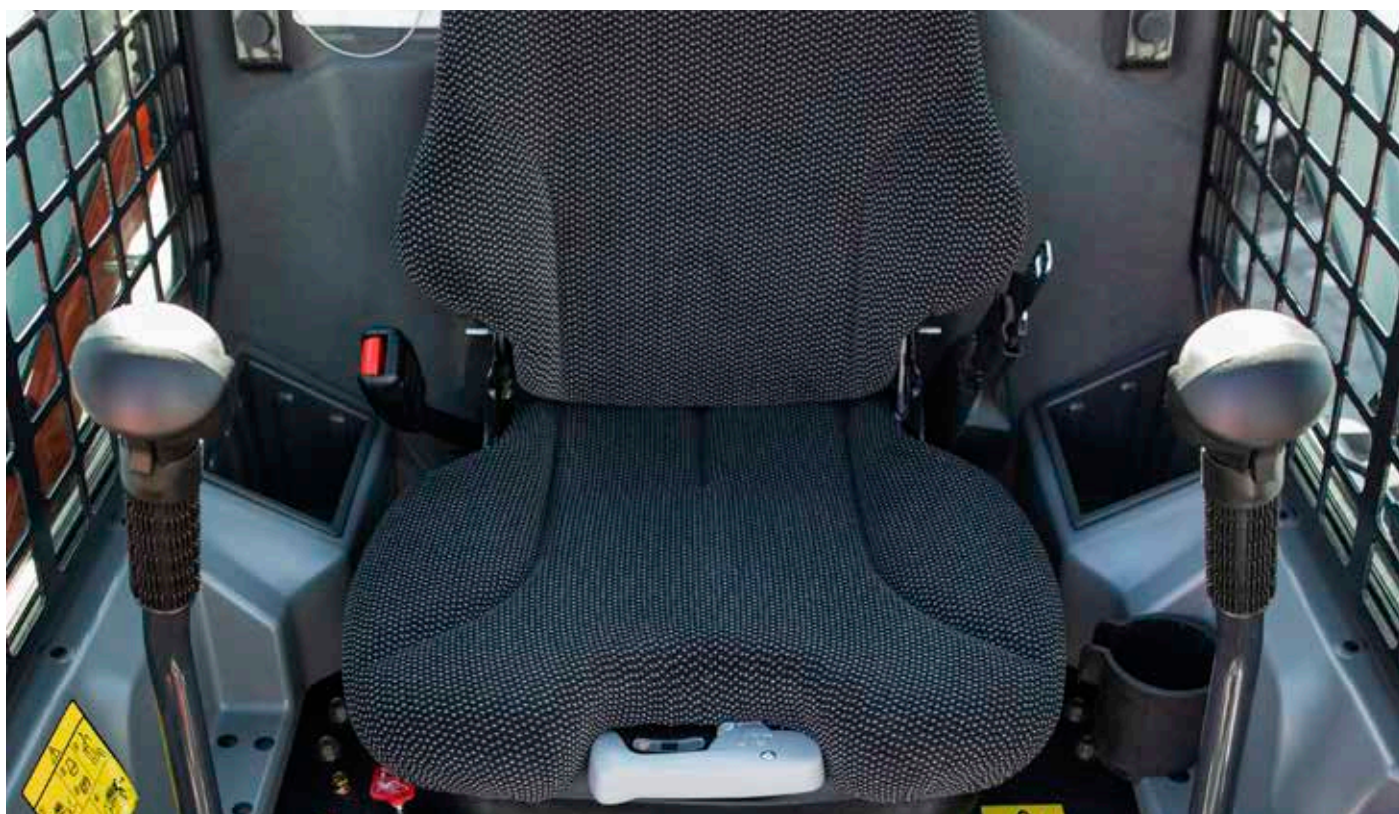


# STEP INSIDE



## ► PRESSURIZED CAB

Bobcat loaders come with a pressurized cab as standard, making sure that dust and dirt are kept out. With storage space and a 12V charger, this easy-to-clean cab is built to make tough jobs comfortable.



## ► IN ALL WEATHER CONDITIONS



Stay comfortable and focused on the job all year round with direct cab temperature control.

## ► DELUXE DASHBOARD



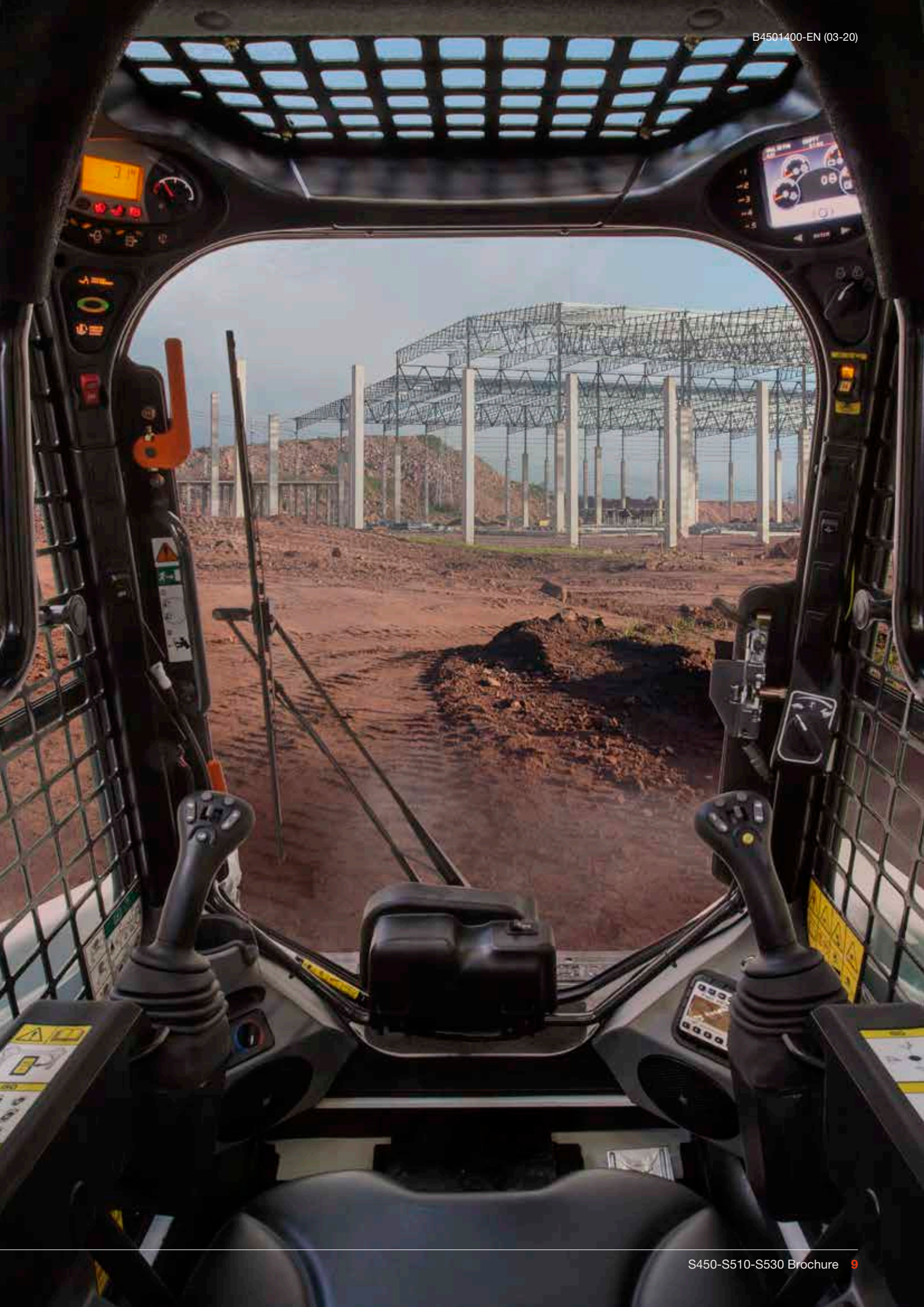
Intuitive control panel and keyless ignition as standard.

## ► PERFECT SEAT



Stay comfortable all day with ergonomic, easily adjustable seats with suspension options.







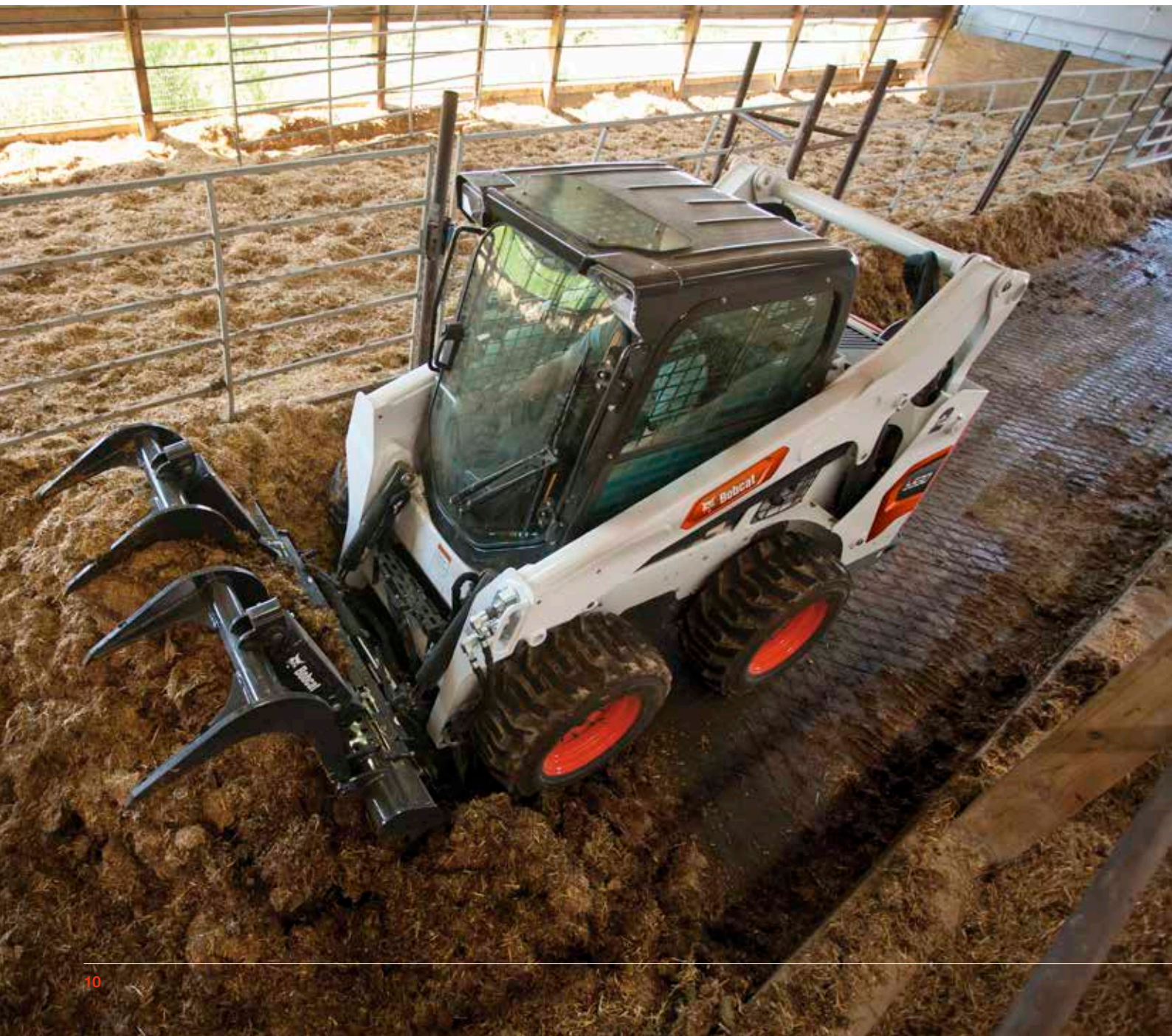
# BUILT TO LAST

## ► IMPROVED UPTIME

Bobcat loaders rely on a range of features that help minimize maintenance and protect your machine: self-diagnostics, machine shutdown protection, battery run-down protection, cold weather protection and other features. What's more, M-Series skid steer loaders feature the industry's only maintenance-free chain case, which further reduces maintenance and gives you added peace of mind.

## ► EXTENDED SERVICE INTERVALS

Improve efficiency and reduce your operating costs thanks to extended service intervals. Bobcat recommends first service after 500 hours of operation – up to 10x the industry standard.







### ► MACHINE IQ

BOBCAT® Machine IQ Wireless Communications enhances the support for your Bobcat machine.

- Durable built-in monitoring electronics
- Data are available to our machine monitoring specialist
- Maintenance is optimized for your business
- Data-driven services maximize uptime

### ► STANDARD WARRANTY

Bobcat Company develops every machine to the highest standards of quality and durability. That's why our standard warranty provides 24 months or 2000 operating hours (whichever occurs first) of coverage.

# THERE'S NO TIME FOR DOWNTIME. STAND UP TO THE HARSHEST CONDITIONS. DAY AFTER DAY.



### ► PROTECTION PLUS EXTENDED WARRANTY

Get peace of mind with a Protection Plus® extended warranty. Providing the same level of protection as the standard warranty, Protection Plus also reflects different customer needs and expectations by offering a choice of durations and annual operating hours. According to your needs, you can benefit from the coverage for up to 5 years or 6000 engine hours. And Protection Plus is transferrable – so it will likely increase your machine's resale value.



### ► BOBCARE

A long-running machine starts with proper planned maintenance. And it helps protect against repair costs and unplanned failures when you're counting on your machine to work.

- Avoid risk by preventing major repairs and complete failures.
- Accomplish more by reducing downtime and increasing your productivity and profitability.

## S450

### ► PUNCHES WELL ABOVE ITS WEIGHT

With a tipping load of 1308 kg, the S450's compact frame at only 1488 mm wide and 1976 mm high belies its power. The smallest loader with air conditioning on the market offers radial lift for versatility in any situation.



## S530

### ► THE POWER TO TACKLE ANY JOB

With a powerful 2600 RPM/41 kW engine, a tipping load of 1823 kg and a 3023 mm lift height, the S530 gives you the confidence to take even the most demanding jobs head-on. The vertical lift and high-flow option mean that you always have the situation under control.





# CHOOSE YOUR ANIMAL

## S510

### ► THE ALL-ROUNDER

The S510 is a perfect fit for an everyday, multi-purpose loader thanks to its 1703 kg tipping point, while remaining compact in size and transportable at 1643 mm wide and 1972 mm tall. A high-flow option and radial lift further increase its flexibility.



### ► CONQUER ANY CHALLENGE



# STANDARD EQUIPMENT



Heavy-duty tires

## ► FOR ALL MACHINES

- 10 × 16.5, 10-ply, heavy-duty tires
- Automatically activated glow plugs
- Auxiliary hydraulics: variable flow/maximum flow
- Bob-Tach™ frame
- Bobcat Interlock Control System (BICS)
- CE certification
- Cushioned lift and tilt cylinders
- Deluxe instrument panel
- Deluxe operator cab
- Electrically activated proportional front auxiliary hydraulics
- Engine/hydraulics system shutdown
- Keyless start with password capability
- Lift arm support
- Machine IQ (telematics)
- Noise reduction kit
- Operating lights, front and rear
- Operating manual
- Parking brake
- Seat bar
- Seat belt
- Spark arrester
- Suspension seat

## ► FOR S510 & S530

- Hydraulic bucket positioning (including ON/OFF switch)

\*Roll Over Protective Structure (ROPS) – meets requirements of SAE-J1040 and ISO 3471; Falling Object Protective Structure (FOPS) – meets requirements of SAE-J1043 and ISO 3449, Level I



# OPTIONS

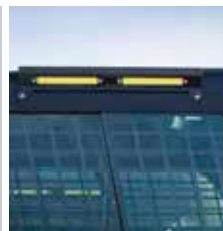
OPTIONS			
	S450	S510	S530
2 Speed		•	•
4-point Lift	•	•	•
Attachment control	•	•	•
Backup alarm	•	•	•
Beacon	•	•	•
Bucket positioning	•	•	•
Cloth suspension seat	•	•	•
Custom paint color	•	•	•
Deluxe cab with side windows	•	•	•
Deluxe enclosed cab with heating	•	•	•
Deluxe enclosed cab with HVAC	•	•	•
Engine compartment seal		•	•
FOPS II	•	•	•
Front axle counterweight	•	•	•
Headlight guard	•	•	•
Heavy-duty offset tires		•	•
High flow		•	•
Industrial flex tires	•	•	•
Joystick controls		•	•
Joystick controls with 2 Speed	•		
Led side lights		•	•
Manual controls	•	•	•
Power Bob-Tach™	•	•	•
Radio	•	•	•
Rear auxiliary hydraulic	•	•	•
Rear camera with display	•	•	•
Rear counterweight	•	•	•
Rear window wiper	•	•	•
Reversing fan	•	•	•
Ride control	•	•	•
Road option	•	•	•
Severe duty tires	•	•	•
Single-point lift	•	•	•
Solid flex tires	•	•	•
Special applications front door	•	•	•
Strobe	•	•	•
Super float tires		•	•
Tail light guard	•	•	•
Versatile duty tires	•	•	•
Water tank	•	•	•

## ► PERSONALIZE YOUR MACHINE

Sometimes, we all want to add a specific functionality or a personal touch to the machine. Choose from a list of comprehensive options and customize your loader to your heart's content!



Severe duty tires



Led lights



Road kit



Selectable Joystick Controls



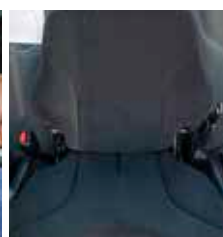
HVAC



Rear camera



Radio



Cloth suspension seat



High-flow auxiliary hydraulics



Forestry kit



Counterweight kit



Beacon

# MULTI-TOOL CARRIER

## BOBCAT ATTACHMENTS

Get more versatility and efficiency with Bobcat® attachments and implements.

- The largest choice of attachments in the industry.
- Match performance to your Bobcat machine.
- Work harder with stronger components and construction.
- Rest easy with the 12-month warranty on every genuine Bobcat attachment.

Actual attachment compatibility may vary based on different machine configurations. Contact your dealer for actual attachment compatibility.



Angle Brooms



Box Blades



Breakers



Brush Saws



Combination Buckets



Concrete Mixers



Drop Hammers



Grapples, Industrial



Landplanes



Augers



Landscape Rakes



Laser Graders



Pallet Forks, Hydraulic



Root Grapples



# MULTI-TOOL CARRIER



Remote Control



Tillers



Snow Blades



Tree Transplanters



Stump Grinders



Scrapers

## TOP SELECTION OF ATTACHMENTS

	S450	S510	S530
Angle Brooms	•	•	•
Augers	•	•	•
Backhoes	•	•	•
Bale Forks	•	•	•
Box Blades		•	•
Breakers	•	•	•
Brushcat™ Rotary Cutters	•	•	•
Brush Saws	•	•	•
Combination Buckets	•	•	•
Concrete Mixers	•	•	•
Construction / Industrial Buckets	•	•	•
Diggers	•	•	•
Dozer Blades	•	•	•
Drop Hammers		•	•
Dumping Hoppers	•	•	•
Fertilizer and Grain Buckets	•	•	•
Flail Cutters	•	•	•
General Purpose (GP) Bucket	•	•	•
Graders	•	•	•
Grapples, Industrial	•	•	•
Landplanes	•	•	•
Landscape Rakes	•	•	•
Laser Equipment	•	•	•
Low Profile Buckets	•	•	•
Mixing Buckets		•	•
Mowers – non CE	•	•	•
Pallet Forks	•	•	•
Planer	•	•	•
Planer, Self Leveling		•	•
Remote Control	•	•	•
Root Grapples	•	•	•
Scarifiers	•	•	•
Scrapers	•	•	•
Skeleton Buckets	•	•	•
Snow & Light Material Buckets	•	•	•
Snow Blades, Pushers, V-blades	•	•	•
Sod Layers	•	•	•
Soil Conditioners	•	•	•
Spreaders	•	•	•
Steel Tracks		•	•
Stump Grinders		•	•
Sweepers	•	•	•
Tillers	•	•	•
Tree Transplanters		•	•
Trench Compactors		•	•
Utility Forks	•	•	•
Vibratory Rollers	•	•	•
Wood Chippers	•	•	•

# SPECIFICATIONS

SPECIFICATIONS			
	S450	S510	S530
MACHINE RATING			
Tipping load (ISO 14397-1)	1308 kg	1703 kg	1823 kg
Rated operating capacity (ISO 14397-1)	654 kg	851 kg	911 kg
Pump capacity std flow (at pump RPM)	63.20 L/min	64.70 L/min	64.70 L/min
Pump capacity high-flow (at pump RPM)	–	101.10 L/min	101.10 L/min
System relief at quick couplers	22.4-23.1 MPa	23.8-24.5 MPa	23.8-24.5 MPa
Travel speed	11.4 km/h	11.8 km/h	11.8 km/h
Travel speed (high - option)	14.8 km/h	17.3 km/h	17.3 km/h
Lift arm path	Radial	Radial	Vertical
DIMENSIONS			
Length with standard bucket	3172 mm	3378 mm	3378 mm
Width over standard bucket	1575 mm	1727 mm	1727 mm
Height with operator cab	1976 mm	1972 mm	1972 mm
Height to bucket hinge pin	2781 mm	2908 mm	3023 mm
Wheelbase	900 mm	1082 mm	1082 mm
ENGINE			
Make / Model	Bobcat 2.4L, 97/68 EC Stage V	Bobcat 2.4L, 97/68 EC Stage V	Bobcat 2.4L, 97/68 EC Stage V
Fuel	Diesel	Diesel	Diesel
Cooling	Liquid	Liquid	Liquid
Power at 2600 RPM (ISO 14396)	36.5 kW	41.0 kW	41.0 kW
Torque at 1800 RPM (ISO 14396)	182.2 Nm	204.0 Nm	204.0 Nm
Number of cylinders	4	4	4
Displacement	2393 cm <sup>3</sup>	2392 cm <sup>3</sup>	2392 cm <sup>3</sup>
Fuel tank capacity	53.80 L	93.70 L	93.70 L
WEIGHTS			
Operating weight*	2436 kg	2816 kg	2952 kg
Shipping weight	2221 kg	2431 kg	2581 kg
ENVIRONMENTAL			
Operator LpA (98/37 & 474-1)	86 dB(A)	86 dB(A)	86 dB(A)
Noise level LwA (EU Directive 2000/14/EC)	98 dB(A)	98 dB(A)	98 dB(A)
Whole body vibration (ISO 2631-1) High speed	0.78 ms <sup>-2</sup>	0.78 ms <sup>-2</sup>	0.86 ms <sup>-2</sup>
Whole body vibration uncertainty	0.39 ms <sup>-2</sup>	0.39 ms <sup>-2</sup>	0.43 ms <sup>-2</sup>
Hand-arm vibration (ISO 5349-1) High speed	1.29 ms <sup>-2</sup>	1.29 ms <sup>-2</sup>	1.31 ms <sup>-2</sup>
FORCES			
Lift breakout force	1416 daN	1978 daN	1662 daN
Tilt breakout force	1807 daN	2080 daN	2122 daN
Push force	1866 daN	2377 daN	–
CYCLE TIMES			
Raise lift arms	2.5 s	3.6 s	3.6 s
Lower lift arms	2.0 s	3.6 s	2.7 s
Bucket rollback	1.5 s	1.7 s	1.8 s
Bucket dump	1.8 s	2.5 s	2.5 s

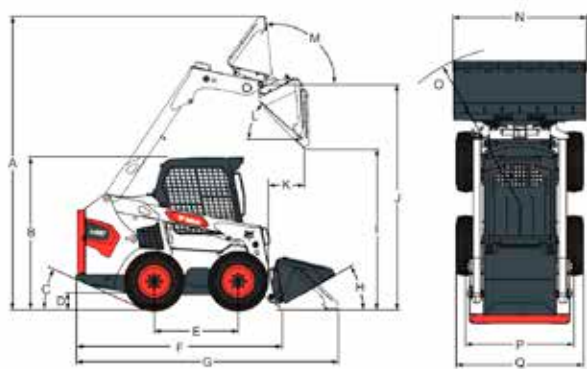
\*Base machine with bucket, operator and full fuel tank

Certain specifications are based on engineering calculations and are not actual measurements. Specifications are provided for comparison purposes only and are subject to change without notice. Specifications for your individual Bobcat equipment will vary based on normal variations in design, manufacturing, operating conditions, and other factors. Pictures of Bobcat units may show other than standard equipment.



# SPECIFICATIONS

## DIMENSIONS



	S450	S510	S530		S450	S510	S530
A	3558	3787	3901	K	587	467	828
B	1976	1972	1972	L	40°	42°	42°
C	23°	24.2°	24.2°	M	91°	97°	97°
D	214	185	185	N	1575	1727	1727
E	900	1082	1082	N	–	1575	1575
F	2499	2657	2657	N	–	1880	1880
G	3172	3378	3378	O	1940	2032	2024
H	26°	30°	30°	P	–	1374	1374
I	2157	2205	2319	Q	1488	1643	1643
J	2781	2908	3023	Q'	–	1520	1520

Unit: mm

\*Machine width with Heavy-duty offset tires.

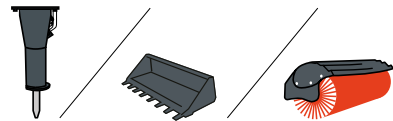




# FINANCING OPTIONS

► **24, 36, 48, OR 60-MONTH FINANCING\***  
Improve your cashflow by taking advantage of 24, 36, 48 or 60-month financing programs starting from 0% interest. Ask your dealer for the financing offers available.

# 150 ATTACHMENTS 63 MACHINES 1 TOUGH ANIMAL

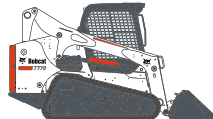


## ► DESIGNED TO DO MORE

Bobcat offers the widest range of attachments for all your needs in Construction, Landscaping, Agriculture, Road, Material Handling and Forestry.



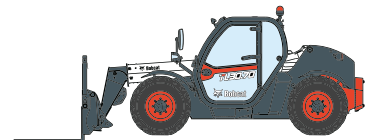
**SKID STEER  
LOADERS**



**COMPACT TRACK  
LOADERS**



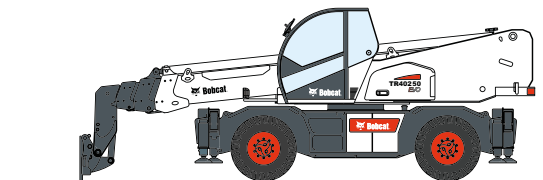
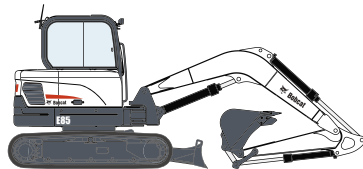
**MINI TRACK  
LOADERS**



**TELEHANDLERS**



**COMPACT EXCAVATORS**



**ROTARY TELESCOPIC HANDLERS**



# Bobcat®

#### Bobcat is a Doosan Company.

Doosan is a global leader in construction equipment, power & water solutions, engines, and engineering proudly serving customers and communities for more than a century. | Bobcat and the Bobcat logo are registered trademarks of Bobcat Company in the United States and various other countries.  
©2020 Bobcat Company. All Rights Reserved.

\*Financing options may vary by country and dealer. Always ask your dealer about currently available financing options. Terms and conditions may apply.

