

SABER™ SERIES

Standard Issue Military-/Industrial-Grade LCD Monitors

Housed in rugged military-grade enclosures, **SABER SERIES** LCD monitors are built to endure harsh conditions, whether on the battlefield or the factory floor. They are in compliance with military standards. The workhorse of the monitor world, the Saber's configuration flexibility has kept in constant production for three decades. Options are varied and numerous.

The wide viewing angles and fast response times serve only to enhance the brilliant, colorful images. A protective glass overlay, with double-sided antiglare etch coatings, guards your LCD investment and diffuses surface glare.

The low power units are designed to operate from a single +12 Vdc regulated source. Customers can provide their own power supply, request a custom supply, or choose one of our specially-designed AC switching supplies, many featuring power factor correction.



Saber PanelMount 19.0 901E custom built to be in compliance with multiple military requirements

STANDARD FEATURES

- » 6.5" to 24.0" LCDs (Rack Mount: 10.4" to 20.1")
- » VGA (640 x 480) to 4K UHD (3840 x 2160) resolution
- » Support for most video inputs, including:
 - › ARGB
 - Separate
 - Composite
 - Sync-On-Green
 - › Composite
 - NTSC
 - DVI-D
 - HDMI
- » **Panel mount, rack mount, VESA mount/standalone** enclosure configurations available
 - › All-metal construction is lightweight yet rugged enough to endure harsh environments
- » Built to meet many military standards, including:
 - › MIL-DTL-901, MIL-STD-810, MIL-STD-167, MIL-STD-461
 - › UL 60950 & FCC Class A Certification

AVAILABLE OPTIONS

- » Support for SECAM, PAL, RS-170, DisplayPort
- » High brightness levels, including brightness dimming control
- » NVIS-compatible displays in compliance with MIL-STD-3009
- » Numerous display enhancements, including:
 - › Touch screens: capacitive, resistive, more
 - › Optical bonding for increased display clarity and shatter resistance
 - › Extended operating and storage temperature range
- » VESA mounting arms and pedestals
- » Remote control via serial/Ethernet
- » Variety of AC-DC power inputs

SABER LCD MONITORS

6" DISPLAY (Popular models listed—alternate configurations available upon request)

Properties	06V-105 ¹	06V-9005 ¹	06X-103 ¹	06X-9004 ¹
Size (diagonal)	6.5"	6.5"	6.5"	6.5"
Viewing Area (W x H)	5.22" x 3.91"	5.22" x 3.91"	5.20" x 3.90"	5.20" x 3.90"
Resolution (pixels)	640 x 480	640 x 480	1024 x 768	1024 x 768
Number of Colors	16.2 Million	16.7 Million	16.7 Million	16.7 Million
Luminance (0° maximum)	700 Nits	600 Nits	650 Nits	650 Nits
Contrast (maximum)	1000:1	800:1	500:1	500:1
Response Time (rise/decay)	15/10 ms	3/15 ms	6/19 ms	6/19 ms
Viewing Angle (horizontal – L/R)	±80°	±80°	±80°	±80°
Viewing Angle (vertical – U/D)	±70°	±80°	+80°/-60°	+80°, -60°
Shock ²	50 G, 20 ms ½ Sine Wave	54 G, 11 ms ½ Sine Wave	54 G, 11 ms ½ Sine Wave	54 G, 11 ms ½ Sine Wave
Vibration ²	1.5 G (10–200 Hz)	2.0 G (5–100 Hz)	2.0 G (5–100 Hz)	2.0 G (5–100 Hz)
Temperature, Operating	-30° to 85°C	-30° to 80°C	-20° to 70°C	-20° to 70°C
Temperature, Storage	-30° to 85°C	-30° to 80°C	-30° to 80°C	-30° to 80°C
Humidity, Operating	5% to 95% RH Non-condensing	5% to 95% RH Non-condensing	10% to 90% RH Non-condensing	5% to 95% RH Non-condensing
Humidity, Storage	5% to 95% RH Non-condensing	5% to 95% RH Non-condensing	10% to 90% RH Non-condensing	5% to 95% RH Non-condensing
Case Dimensions (H x W x D) ^{3,4}				
Saber Standalone			7.50" x 9.25" x 1.43"	
Saber PanelMount			6.25" x 8.25" x 3.07"	
Construction			5052-H32 Aluminum	
Finish			Black Matte Powder Coat	
Mounting (Saber Standalone only)			VESA Standard, 75 mm, 4 Places, Rear	
Weight, Operating ⁵			7 Pounds	
Weight, Shipping ⁵			12 Pounds	
Power Input (default)			+12 Vdc	



The compact Saber PanelMount 6.5 easily fits in space-constrained environments

Screenshot courtesy of David Mark

SABER LCD MONITORS

8" DISPLAY (Popular models listed—alternate configurations available upon request)

Properties	08S-166 ¹	08S-166-DUAL ¹	08S-9007 ¹	08X-917 ¹
Size (diagonal)	8.4"	8.4" (x2)	8.4"	8.4"
Viewing Area (W x H)	6.71" x 5.03"	6.71" x 5.03"	6.71" x 5.03"	6.71" x 5.03"
Resolution (pixels)	800 x 600	800 x 600	800 x 600	1024 x 768
Number of Colors	16.2 Million	16.2 Million	16.7 Million	16.7 Million
Luminance (0° maximum)	450 Nits	450 Nits	800 Nits	600 Nits
Contrast (maximum)	600:1	600:1	800:1	1000:1
Response Time (rise/decay)	20/10 ms	20/10 ms	3/15 ms	13/12 ms
Viewing Angle (horizontal – L/R)	±80°	±80°	±80°	±88°
Viewing Angle (vertical – U/D)	+80°/-60°	+80°/-60°	±80°	±88°
Shock ²	50 G, 20 ms ½ Sine Wave	50 G, 20 ms ½ Sine Wave	54 G, 11 ms ½ Sine Wave	54 G, 11 ms ½ Sine Wave
Vibration ²	1.5 G (10–200 Hz)	1.5 G (10–200 Hz)	2.0 G (5–100 Hz)	2.0 G (5–100 Hz)
Temperature, Operating	-30° to 85°C	-30° to 85°C	-30° to 80°C	-20° to 70°C
Temperature, Storage	-30° to 85°C	-30° to 85°C	-30° to 80°C	-30° to 80°C
Humidity, Operating	10% to 90% RH Non-condensing	10% to 90% RH Non-condensing	10% to 90% RH Non-condensing	10% to 90% RH Non-condensing
Humidity, Storage	10% to 90% RH Non-condensing	10% to 90% RH Non-condensing	10% to 90% RH Non-condensing	10% to 90% RH Non-condensing
Case Dimensions (H x W x D) ^{3,4}				
Saber Standalone	7.50" x 10.50" x 1.48"	N/A	7.50" x 10.50" x 1.48"	7.50" x 10.50" x 1.48"
Saber PanelMount/PanelMount Dual	9.50" x 11.25" x 2.50"	8.72" (5U) x 17.75" x 3.87"	9.50" x 11.25" x 2.50"	9.50" x 11.25" x 2.50"
Saber RackMount Dual	N/A	8.72" (5U) x 17.75" x 3.87"	N/A	N/A
Construction	5052-H32 Aluminum			
Finish	Black Matte Powder Coat			
Mounting (Saber Standalone only)	VESA Standard, 75 mm, 4 Places, Rear			
Weight, Operating ⁵	9 Pounds	12 Pounds	9 Pounds	9 Pounds
Weight, Shipping ⁵	14 Pounds	17 Pounds	14 Pounds	14 Pounds
Power Input (default)	+12 Vdc			



The Saber RackMount 8.4 Dual features 2 displays with separate video inputs, and dual fans for cool operation

Screenshots courtesy of Cpl. Alisha Grezlik & Galyna Andrushko/Shutterstock

SABER LCD MONITORS

10" DISPLAY (Popular models listed—alternate configurations available upon request)

Properties	10V-212
Size (diagonal)	10.4"
Viewing Area (W x H)	8.31" x 6.24"
Resolution (pixels)	640 x 480
Number of Colors	262,144
Luminance (0° maximum)	500 Nits
Contrast (maximum)	1500:1
Response Time (rise/decay)	14/9 ms
Viewing Angle (horizontal – L/R)	±88°
Viewing Angle (vertical – U/D)	±88°
Shock ²	200 G, 2 ms ½ Sine Wave
Vibration ²	1.5 G (10–200 Hz)
Temperature, Operating	-30° to 80°C
Temperature, Storage	-30° to 80°C
Humidity, Operating	10% to 90% RH Non-condensing
Humidity, Storage	10% to 90% RH Non-condensing
Case Dimensions (H x W x D) ^{3, 4}	
Saber Standalone	9.50" x 11.63" x 2.50"
Saber PanelMount	10.00" x 12.00" x 3.00"
Saber RackMount	10.00" x 12.00" x 3.00"
Construction	5052-H32 Aluminum
Finish	Black Matte Powder Coat
Mounting (Saber Standalone only)	VESA Standard, 75 mm & 100 mm, 4 Places (x2), Rear
Weight, Operating ⁵	11 Pounds
Weight, Shipping ⁵	16 Pounds
Power Input (default)	+12 Vdc

Custom-designed for the U.S. Air Force, the Saber PanelMount 10.4 features a custom bezel with 12 function buttons



Screenshot courtesy of Pexels/Pixabay

SABER LCD MONITORS

12" DISPLAY (Popular models listed—alternate configurations available upon request)

Properties	12S-304
Size (diagonal)	12.1"
Viewing Area (W x H)	9.69" x 7.26"
Resolution (pixels)	800 x 600
Number of Colors	16.2 Million
Luminance (0° maximum)	600 Nits
Contrast (maximum)	1500:1
Response Time (rise/decay)	13/12 ms
Viewing Angle (horizontal – L/R)	±89°
Viewing Angle (vertical – U/D)	±89°
Shock ²	200 G, 2 ms ½ Sine Wave
Vibration ²	1.5 G (10–300 Hz)
Temperature, Operating	-30° to 70°C
Temperature, Storage	-30° to 80°C
Humidity, Operating	20% to 90% RH Non-condensing
Humidity, Storage	10% to 90% RH Non-condensing
Case Dimensions (H x W x D) ^{3, 4}	
Saber Standalone	9.00" x 14.00" x 2.04"
Saber PanelMount	11.00" x 14.00" x 3.00"
Saber RackMount	8.47" x 13.50" x 2.50"
Construction	5052-H32 Aluminum
Finish	Black Matte Powder Coat
Mounting (Saber Standalone only)	VESA Standard, 75 mm & 100 mm, 4 Places (x2), Rear
Weight, Operating ⁵	13 Pounds
Weight, Shipping ⁵	18 Pounds
Power Input (default)	+12 Vdc



Photo courtesy of Samchai Kangkamsri

SABER LCD MONITORS

15" DISPLAY (Popular models listed—alternate configurations available upon request)

Properties	15X-408	15X-409	15X-989	15D-479
Size (diagonal)	15.0"	15.0"	15.0"	15.6"
Viewing Area (W x H)	11.97" x 8.98"	11.97" x 8.98"	11.97" x 8.98"	13.55" x 7.62"
Resolution (pixels)	1024 X 768	1024 x 768	1024 x 768	1920 x 1080
Number of Colors	16.7 Million	16.2 Million	16.7 Million	16.7 Million
Luminance (0° maximum)	400 Nits	400 Nits	600 Nits	400 Nits
Contrast (maximum)	600:1	700:1	600:1	700:1
Response Time (rise/decay)	6/2 ms	5.7/2.3	3/5 ms	8 ms (total)
Viewing Angle (horizontal – L/R)	±80°	±80°	±80°	±80°
Viewing Angle (vertical – U/D)	±80°	+60°/-80°	±80°	±70°
Shock ²	30 G, 11 ms ½ Sine Wave	50 G, 20 ms ½ Sine Wave	30 G, 11 ms ½ Sine Wave	50 G, 20 ms ½ Sine Wave
Vibration ²	1.0 G (5–100 Hz)	1.5 G (10–200 Hz)	1.0 G (5–100 Hz)	1.5 G (10–200 Hz)
Temperature, Operating	-20° to 70°C	-30° to 85°C	-20° to 70°C	-10° to 70°C
Temperature, Storage	-30° to 85°C	-30° to 85°C	-30° to 80°C	-20° to 70°C
Humidity, Operating	8% to 90% RH Non-condensing	8% to 90% RH Non-condensing	8% to 90% RH Non-condensing	8% to 95% RH Non-condensing
Humidity, Storage	8% to 90% RH Non-condensing	8% to 90% RH Non-condensing	8% to 90% RH Non-condensing	5% to 95% RH Non-condensing
Case Dimensions (H x W x D)^{3,4}				
Saber Standalone		11.22" x 14.22" x 1.99"		TBD
Saber PanelMount		12.50" x 15.00" x 2.50"		TBD
Saber RackMount		12.50" x 15.00" x 2.35"		TBD
Construction	5052-H32 Aluminum			
Finish	Black Matte Powder Coat			
Mounting (Saber Standalone only)	VESA Standard, 75 mm & 100 mm, 4 Places (x2), Rear			
Weight, Operating ⁵	15 Pounds			
Weight, Shipping ⁵	20 Pounds			
Power Input (default)	+12 Vdc			



The Saber Standalone Solar 15.0 features dedicated buttons for high brightness and standard luminance, capacitive touch screen, speaker and quick release VESA mounting bracket



Screenshot courtesy of Mass Communication Specialist 3rd Class Connor Loessin

SABER LCD MONITORS

17" DISPLAY (Popular models listed—alternate configurations available upon request)

Properties	17W-510	17W-956 ⁶	17D-524
Size (diagonal)	17.0"	17.0"	17.3"
Viewing Area (W x H)	13.30" x 10.64"	13.30" x 10.64"	15.03" x 8.46"
Resolution (pixels)	1280 x 1024	1280 x 1024	1920 x 1080
Number of Colors	16.7 Million	16.7 Million	16.7 Million
Luminance (0° maximum)	350 Nits	930 Nits	400 Nits
Contrast (maximum)	1000:1	810:1	600:1
Response Time (rise/decay)	3.5/1.5 ms	3.5/1.5 ms	37/3 ms
Viewing Angle (horizontal – L/R)	±85°	±85°	±80°
Viewing Angle (vertical – U/D)	±85°	±85°	+60°/-80°
Shock ²	50 G, 20 ms ½ Sine Wave	50 G, 20 ms ½ Sine Wave	50 G, 20 ms ½ Sine Wave
Vibration ²	1.5 G (10–200 Hz)	1.5 G (10–200 Hz)	1.5 G (10–200 Hz)
Temperature, Operating	-30° to 85°C	-30° to 85°C	0° to 70°C
Temperature, Storage	-30° to 85°C	-30° to 85°C	-20° to 70°C
Humidity, Operating	8% to 90% RH Non-condensing	8% to 90% RH Non-condensing	5% to 95% RH Non-condensing
Humidity, Storage	8% to 90% RH Non-condensing	8% to 90% RH Non-condensing	5% to 95% RH Non-condensing
Case Dimensions (H x W x D) ^{3, 4}			
Saber Standalone	12.18" x 16.23" x 2.22"	12.18" x 16.23" x 2.22"	13.625" x 19.50" x 2.75"
Saber PanelMount	13.50" x 16.00" x 2.69"	13.50" x 16.00" x 2.69"	12.00" x 18.00" x 2.75"
Saber RackMount	13.50" x 16.00" x 2.56"	13.50" x 16.00" x 2.56"	10.22" x 17.00" x 3.00"
Construction	5052-H32 Aluminum		
Finish	Black Matte Powder Coat		
Mounting (Saber Standalone only)	VESA Standard, 75 mm & 100 mm, 4 Places (x2), Rear		
Weight, Operating ⁵	16 Pounds		
Weight, Shipping ⁵	21 Pounds		
Power Input (default)	+12 Vdc		



The Saber PanelMount 17.0 can be configured with an unpainted perforated rear enclosure for natural cooling. This rugged unit also features a resistive touch screen for improved HMI interaction.

Screenshot courtesy of Christian Lagerek/Shutterstock

SABER LCD MONITORS

19" DISPLAY (Popular models listed—alternate configurations available upon request)

Properties	19W-701	19W-993 ⁶
Size (diagonal)	19.0"	19.0"
Viewing Area (W x H)	14.81" x 11.85"	14.81" x 11.85"
Resolution (pixels)	1280 x 1024	1280 x 1024
Number of Colors	16.7 Million	16.7 Million
Luminance (0° maximum)	350 Nits	1000 Nits
Contrast (maximum)	1000:1	700:1
Response Time (rise/decay)	3.6/1.4 ms	3.6/1.4 ms
Viewing Angle (horizontal – L/R)	±85°	±85°
Viewing Angle (vertical – U/D)	±80°	±80°
Shock ²	50 G, 20 ms ½ Sine Wave	50 G, 11 ms ½ Sine Wave
Vibration ²	1.5 G (10–200 Hz)	1.5 G (10–300 Hz)
Temperature, Operating	0° to 50°C	-30° to 85°C
Temperature, Storage	-20° to 60°C	-30° to 85°C
Humidity, Operating	5% to 90% RH Non-condensing	8% to 90% RH Non-condensing
Humidity, Storage	5% to 90% RH Non-condensing	8% to 90% RH Non-condensing
Case Dimensions (H x W x D) ^{3, 4}		
Saber Standalone	15.00" x 17.75" x 2.66"	
Saber PanelMount	14.25" x 17.00" x 3.35"	
Saber RackMount	14.25" x 17.00" x 4.80"	
Construction	5052-H32 Aluminum	
Finish	Black Matte Powder Coat	
Mounting (Saber Standalone only)	VESA Standard, 75 mm & 100 mm, 4 Places (x2), Rear	
Weight, Operating ⁵	19 Pounds	
Weight, Shipping ⁵	24 Pounds	
Power Input (default)	+12 Vdc	

With a front bezel over ½" thick, this Saber PanelMount Solar/NVIS 19.0 is ready for the toughest of tasks. On the bezel face is a membrane keypad with buttons for switching from sunlight readable luminance to an NVIS-compatible screen.



Screenshot courtesy of Cmdr. Tom Lalor/Wikimedia

SABER LCD MONITORS

20" DISPLAY (Popular models listed—alternate configurations available upon request)

Properties	20U-845
Size (diagonal)	20.1"
Viewing Area (W x H)	16.06" x 12.05"
Resolution (pixels)	1600 x 1200
Number of Colors	16.7 Million
Luminance (0° maximum)	260 Nits
Contrast (maximum)	1000:1
Response Time (rise/decay)	30 ms (total)
Viewing Angle (horizontal – L/R)	±85°
Viewing Angle (vertical – U/D)	±85°
Shock ²	50 G, 6 ms ½ Sine Wave
Vibration ²	1.0 G (58–500 Hz)
Temperature, Operating	0° to 50°C
Temperature, Storage	-25° to 60°C
Humidity, Operating	5% to 90% RH Non-condensing
Humidity, Storage	5% to 90% RH Non-condensing
Case Dimensions (H x W x D) ^{3, 4}	
Saber Standalone	15.30" x 21.70" x 2.50"
Saber PanelMount	16.30" x 19.50" x 4.00"
Saber RackMount	15.50" x 17.63" x 3.25"
Construction	5052-H32 Aluminum
Finish	Black Matte Powder Coat
Mounting (Saber Standalone only)	VESA Standard, 100 mm & 200 mm, 4 Places (x2), Rear
Weight, Operating ⁵	21 Pounds
Weight, Shipping ⁵	26 Pounds
Power Input (default)	+12 Vdc

The Saber Standalone Solar 20.1 is equipped with a rear-mounted power supply and VESA mounting bracket



Screenshot courtesy of Senior Airman Greg L. Davis/wikimedia

SABER LCD MONITORS

22" DISPLAY (Popular models listed—alternate configurations available upon request)

Properties	22D-813	22D-987 ⁶
Size (diagonal)	21.5"	21.5"
Viewing Area (W x H)	18.77" x 10.56"	18.77" x 10.56"
Resolution (pixels)	1920 x 1080	1920 x 1080
Number of Colors	16.7 Million	16.7 Million
Luminance (0° maximum)	300 Nits	1040 Nits
Contrast (maximum)	5000:1	7430:1
Response Time (rise/decay)	20/5 ms	20/5 ms
Viewing Angle (horizontal – L/R)	±89°	±89°
Viewing Angle (vertical – U/D)	±89°	±89°
Shock ²	50 G, 20 ms ½ Sine Wave	50 G, 20 ms ½ Sine Wave
Vibration ²	1.5 G (10–200 Hz)	1.5 G (10–200 Hz)
Temperature, Operating	0° to 60°C	0° to 60°C
Temperature, Storage	-20° to 60°C	-20° to 60°C
Humidity, Operating	5% to 90% RH Non-condensing	10% to 90% RH Non-condensing
Humidity, Storage	5% to 90% RH Non-condensing	10% to 90% RH Non-condensing
Case Dimensions (H x W x D) ^{3, 4}		
Saber Standalone		14.25" x 21.75" x 3.00"
Saber PanelMount		14.00" x 22.00" x 3.00"
Saber RackMount		N/A
Construction		5052-H32 Aluminum
Finish		Black Matte Powder Coat
Mounting (Saber Standalone only)		VESA Standard, 100 mm & 200 mm, 4 Places (x2), Rear
Weight, Operating ⁵		24 Pounds
Weight, Shipping ⁵		29 Pounds
Power Input (default)		+12 Vdc



The Saber Standalone NVIS 21.5 is compatible with night vision goggles via the NVIS button on the monitor bezel. This rugged VESA mount unit includes a capacitive touch screen and internal power supply.



Screenshot courtesy of designprojects/Adobe Stock

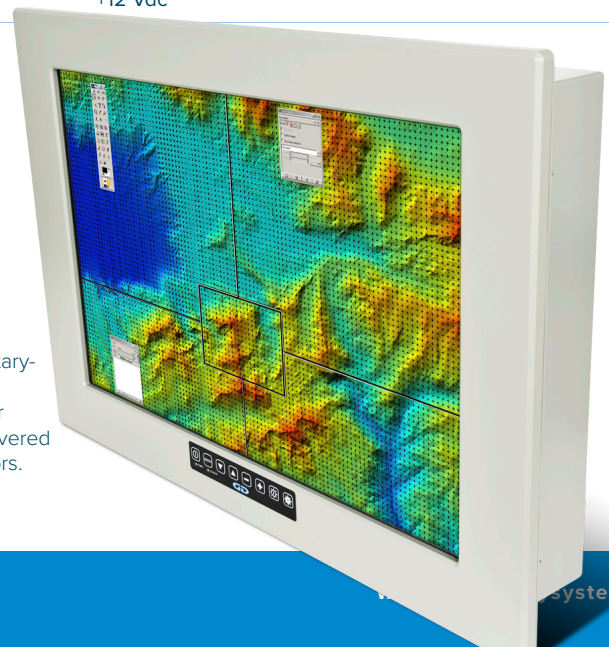
SABER LCD MONITORS

24" DISPLAY (Popular models listed—alternate configurations available upon request)

Properties	24D-819	24D-9014	24K-848
Size (diagonal)	24.0"	24.0"	23.8"
Viewing Area (W x H)	20.92" x 11.77"	20.92" x 11.77"	20.75" x 11.67"
Resolution (pixels)	1920 x 1080	1920 x 1080	3840 x 2160
Number of Colors	16.7 Million	16.7 Million	1.07 Billion
Luminance (0° maximum)	300 Nits	900 Nits	300 Nits
Contrast (maximum)	3000:1	3340:1	1000:1
Response Time (rise/decay)	16/9 ms	16/9 ms	9.5 ms (total)
Viewing Angle (horizontal – L/R)	±89°	±89°	±89°
Viewing Angle (vertical – U/D)	±89°	±89°	±89°
Shock ²	50 G, 20 ms ½ Sine Wave	50 G, 20 ms ½ Sine Wave	50 G, 11 ms ½ Sine Wave
Vibration ²	1.5 G (10–200 Hz)	1.5 G (10–200 Hz)	1.5 G (10–300 Hz)
Temperature, Operating	0° to 50°C	0° to 50°C	0° to 50°C
Temperature, Storage	-20° to 60°C	-20° to 60°C	-20° to 60°C
Humidity, Operating	5% to 90% RH Non-condensing	5% to 90% RH Non-condensing	20% to 90% RH Non-condensing
Humidity, Storage	5% to 90% RH Non-condensing	5% to 90% RH Non-condensing	10% to 90% RH Non-condensing
Case Dimensions (H x W x D) ^{3, 4}			
Saber Standalone	15.25" x 24.25" x 3.00"	15.25" x 24.25" x 3.00"	15.25" x 23.75" x 3.00"
Saber PanelMount	15.94" x 21.90" x 3.00"	15.94" x 21.90" x 3.00"	15.94" x 21.90" x 3.00"
Saber RackMount	N/A	N/A	15.94" x 21.90" x 3.00"
Construction	5052-H32 Aluminum		
Finish	Black Matte Powder Coat		
Mounting (Saber Standalone only)	VESA Standard, 100 mm & 200 mm, 4 Places (x2), Rear		
Weight, Operating ⁵	25 Pounds		
Weight, Shipping ⁵	30 Pounds		
Power Input (default)	+12 Vdc		



The Saber PanelMount 24.0 is a military-spec COTS monitor. The display has an optically bonded vandal shield for durability, while the rear features louvered vents and mil-spec circular connectors.



SABER LCD MONITORS

VIDEO CONTROLLER^{7, 8}

Properties	117	121	125	132	135
Maximum Resolution @ Vertical Frequency	1920 x 1200 WUXGA @ 60 Hz	1920 x 1200 WUXGA @ 60 Hz	3840 x 2160 4K UHD @ 30, 60 Hz	1440 x 900 WXGA+ @ 60 Hz	1920 x 1200 WUXGA @ 60 Hz
Video Inputs Supported ^{9, 10}	ARGB, DVI-D, HDMI	ARGB, Composite, DVI-I, S-Video	DisplayPort, DVI-I, HDMI (x3)	ARGB, DVI-D	ARGB, Composite, DVI-D, HDMI

VIDEO STANDARDS SUPPORTED⁹

Analog Computer Video	Digital Computer Video	Composite (Live) Video	HD Video
ARGB, RGB, Separate Sync, Composite Sync, Sync-On-Green, DVI-A, RS-343A (Optional), STANAG 3350 A / B / C (Optional)	DVI-D, HDMI	NTSC, PAL, SECAM, RS-170, S-Video, CCTV	HD-SDI, HDMI

CALIBRATION

Properties	117	121	125
Interface	On-screen Displays Navigated by 8-button Membrane Pad	On-screen Displays Navigated by 8-button Membrane Pad	On-screen Displays Navigated by 8-button Membrane Pad
Functions	Brightness, Contrast, Saturation, Backlight Brightness, Input Signal, Aspect Size (Scaling), Image Position (Horizontal & Vertical), Utilities	Brightness, Contrast, Saturation, Hue, Sharpness, Backlight Brightness, Input Signal, Aspect Size (Scaling), Image Position (Horizontal & Vertical), Utilities	Volume, Brightness, Contrast, Saturation, Hue, Sharpness, Backlight Brightness, Display Mode, Input Signal, Aspect Size (Scaling), Information
Advanced	Picture-In-Picture (PIP), PIP Size, PIP Position, PIP Transparency, Auto Picture Setup, Auto Color Gain, Wide Screen Mode Detection, Manual Clock/Phase, Auto Source Seek, Auto Power Off, Video Standard, OSD (Position, Timeout, Language [English, Spanish, French, German, Chinese], Transparency, Display Input), Image Freeze, Image Zoom & Pan, Color Temperature, Hot Keys, Backlight Setup	Picture-In-Picture (PIP), PIP Size, PIP Position, PIP Transparency, Auto Picture Setup, Auto Color Gain, Wide Screen Mode Detection, Manual Clock/Phase, Auto Source Seek, Auto Power Off, Video Standard, OSD (Position, Timeout, Language [English, Spanish, French, German, Chinese], Transparency, Display Input), Image Freeze, Image Zoom & Pan, Color Temperature, Hot Keys, Backlight Setup, Image Orientation (Normal, Horizontal Flip, Vertical Flip, Rotate)	Image Rotate, Color Temperature, Gamma, Color Effect, Color Format, OSD (Position, Timeout, Language, Transparency, Rotate, Border Width, Border Color), Picture-In-Picture (PIP), Picture-By-Picture (PBP)

Properties	132	135
Interface	On-screen Displays Navigated by 8-button Membrane Pad	On-screen Displays Navigated by 8-button Membrane Pad
Functions	Brightness, Contrast, Sharpness, Backlight Brightness, Input Signal, Aspect Size (Scaling), Image Position (Horizontal & Vertical), Gamma, Utilities	Brightness, Contrast, Sharpness, Hue, Saturation, Backlight Brightness, Input Signal, Aspect Size (Scaling), Image Position (Horizontal & Vertical), Utilities
Advanced	OSD (Language, Position, Timeout, Transparency), Image Auto Adjust, Color Auto Adjust, Auto Source Seek, Clock, Phase, Color Temperature, Backlight Dimming, Backlight Frequency, Backlight Invert	OSD (Language, Timeout, Transparency), Clock, Phase, Color Temperature, Auto Color Gain, Auto Picture Setup, Auto Source Seek, Auto Power On/Off, Image Orientation, Hot Keys, Backlight Invert, Backlight Dimming, Backlight Frequency, Audio Volume

SABER LCD MONITORS

I/O CONNECTORS

Power (DC)	On/Standby (DC)	Analog Video	Composite Video (Optional)	DisplayPort (Optional)	DVI (Optional)	HDMI (Optional)	Serial/Touch Screen (Optional)	Audio (Optional)
2W2 D-sub. ¹¹	LED on Membrane Pad	High Density 15-pin Socket	BNC Socket	DisplayPort	DVI-D / DVI-I	HDMI, Type A	DE-9, Socket	3.5 mm Headphone Jack

OPTIONS & ACCESSORIES

General Digital provides an ample selection of options and accessories to complement your LCD monitor. A partial listing of popular choices is provided below. Please visit our Web site for more choices, or inquire with a Sales Engineer to discuss your specific requirements. Note that nearly all options and accessories are ordered separately, at additional cost.

DISPLAY OVERLAY (Popular choices listed—contact General Digital for additional selections)

DO Option No.	Description
00	None
02	Clear Float Glass, Antiglare Etch Two Sides
04	Clear Float Glass, Antireflective Coating Two Sides
21	Vandal Shield, Polycarbonate or Acrylic
23	Vandal Shield, Clear Float Glass, Antiglare Etch Two Sides, 2 Panes Bonded (Laminated) Together (Not Bonded to LCD)
24	Vandal Shield, Soda Lime Glass, Chemically Strengthened (Tempered), Antireflective Coating Two Sides
35	Capacitive Touch Screen, Ideal Etch
51	Resistive Touch Screen
65	Resistive Touch Screen, 5-Wire, with Laminated ITO Glass

Saber Standalone 24.0 equipped with optional speaker and panel mount adaptor



Screenshot courtesy of GaudiLab /Shutterstock

SABER LCD MONITORS

OPTIONS & ACCESSORIES

POWER SUPPLY¹² (Popular choices listed—contact General Digital for additional selections)

PS Option No.	Input Voltage Range	Output					Frequency Range	Line Entry Module/ Filter	Power Factor Correction
		6.5"–12.1"	15.0"–19.0"	20.1"–21.5"	23.8"	24.0"			
EP01 (Rear Mount)	85–264 Vac	50 W/+12 Vdc	50 W/+12 Vdc (15" Only)	—	—	—	47–63 Hz	Yes	0.95
EP02 (Rear Mount)	85–264 Vac	—	75 W/+12 Vdc	—	—	75 W/ +24 Vdc	47–63 Hz	Yes	0.95
EP03 (Rear Mount)	85–264 Vac	—	100 W/+12 Vdc	—	—	—	47–63 Hz	Yes	0.95
EP07 (Rear Mount)	85–264 Vac	—	—	—	—	150 W/ +12 Vdc	47–63 Hz	Yes	0.99
IA04 (Internal)	85–132, 170–264 Vac	—	—	100 W/+12 Vdc	—	—	47–63 Hz	Yes	—
IP14 (Internal)	85–264 Vac	—	—	—	75 W/ +24 Vdc	—	47–63 Hz	Yes	0.99
SA30 (Separate)	90–264 Vac	66 W/+12 Vdc	—	—	—	—	47–63 Hz	—	—
SP31 (Separate)	90–264 Vac	100 W/+12 Vdc	100 W/+12 Vdc	100 W/+12 Vdc	—	—	47–63 Hz	—	0.95
90-186 ¹³ (Separate)	90–264 Vac	66 W/+12 Vdc	—	—	—	—	47–63 Hz	—	—
0092 (none)	+12 Vdc	Filtering and regulation provided by customer (default selection)							

MISCELLANEA

NVIS Compatibility	Night Vision displays in compliance with MIL-STD-3009
Sunlight Readable LCDs	High Brightness displays to 1000+ nits
Optical Enhancements	Bonding of filter and display using indice-matched optical materials; Brightness- and contrast-enhancing films and laminations
Power Supplies	AC and DC supplies; Various input ranges, input frequencies; Separate or attached; Power Factor Correction; AC and DC power cables
Video Accessories	Video cables; Signal extenders; Picture-In-Picture (PIP); Picture-By-Picture (PBP); NTSC PAL SECAM RS-170 S-Video DisplayPort DVI-D HD-SDI SD-SDI HDMI HD Component Support
Remote Control	IR or Serial calibration/control interface
Customization	Custom mechanical and electrical modifications; Custom finishing; Custom software and performance modifications; Private labeling



Four Saber Standalone 21.5 monitors ready for duty in a flight simulator

FOOTNOTES

- 1 Displays smaller than 10" are not available in rack mount configuration (except the Dual 8" Display model).
- 2 Shock and Vibration data reflect parameters for baseline industrial monitors. Military-grade monitors could sustain even greater shock and vibration levels. Please inquire with a Sales Engineer for more information.
- 3 Standard base enclosure dimensions listed. For a control drawing with complete dimensions, please contact a Sales Engineer.
- 4 An attached power supply will add 2"-2.5" to the overall depth of the unit.
- 5 Add 2 pounds to the weight when a separate power supply is included.
- 6 This model has been designed and tested to be in NVIS compliance with MIL-STD-3009. Inquire with a Sales Engineer about obtaining other night vision goggle-compatible models.
- 7 Maximum video resolution listed. Speak with a Sales Engineer for a complete list of available resolutions.
- 8 Dual 8" Display models utilize two video controller boards.
- 9 Primary video inputs listed. Speak with a Sales Engineer about other video modes supported.
- 10 Although the video controllers can support multiple video inputs, space limitations may prevent access to certain connectors or routing of certain cables. Discuss your requirements with a Sales Engineer to devise a configuration that best suits your needs.
- 11 Default connector; specific configuration may require a different connector type.
- 12 Includes 6'7" AC power cable.
- 13 Must be ordered as a separate line item.

 **GENERAL DIGITAL**
An SBA Small Business Concern

60 Prestige Park Road

East Hartford, Connecticut 06108

Phone 860.282.2900 | Toll-Free 800.952.2535

E-mail gdc_info@generaldigital.com



DISCLAIMER

Information contained in this document is proprietary to General Digital Corporation and is current as of publication date. This document may not be modified in any way without the express written consent of General Digital. Product processing does not necessarily include testing of all parameters. General Digital reserves the right to change the configuration and performance of the product and to discontinue product at any time. **The appearance of U.S. Department of Defense (DoD) visual information does not imply or constitute DoD endorsement.**

© 2021 General Digital Corporation

All product names are trademarks of their respective companies.

999-0903-054r5