



Cargo Handling Systems



SOLVING YOUR CARGO HANDLING CHALLENGES

www.saco.aero



We take care!

SACO AIRPORT EQUIPMENT CARGO HANDLING SOLUTIONS

With air traffic predicted to grow at an average rate of 8% per year, and in some areas even up to 20%, the amount of air cargo flow around will also increase tremendously. As a result, companies involved with air cargo face growing challenges on how to organise this and how to get cargo from and to their customers safely and on time. For this, SACO backed by more than 50 years of experience, offers ULD handling solutions ranging from basic systems for manual manoeuvring to fully mechanised and automated systems.

Based in Mierlo, The Netherlands, SACO designs, manufactures and supplies

turnkey Cargo Handling Equipment and Systems. Due to the modular design of SACO's units, it is easy to move, modify, extend and upgrade an existing system in phases when cargo volumes grow. Users can adjust investments to their needs.

Full after sales support, tailor made maintenance solutions and 24-hours service ensure a high performance standard throughout the system's entire life span.

SACO's systems have been successfully supplied and commissioned in many European countries, but also in India, Indonesia, Russia, U.S.A., U.A.E., Canada, Curaçao, Rwanda, and Ethiopia.



SACO IS MEMBER OF:

Netherlands Airport
Technology



The International Air Cargo Association





CORPORATE BACKGROUND

SACO is fully owned by and incorporated into SMA BV based in The Netherlands. SMA BV has its origin in 1966 and has evolved into an internationally oriented organisation with multiple divisions. The core activities of the company - construction, manufacturing, supply and assembly of steel and machine constructions – are sub-divided in five divisions. SACO enjoys the advantages of having a flat organization with short and direct communication lines, whereas SACO is also able to handle large projects requiring extensive manpower and project management.

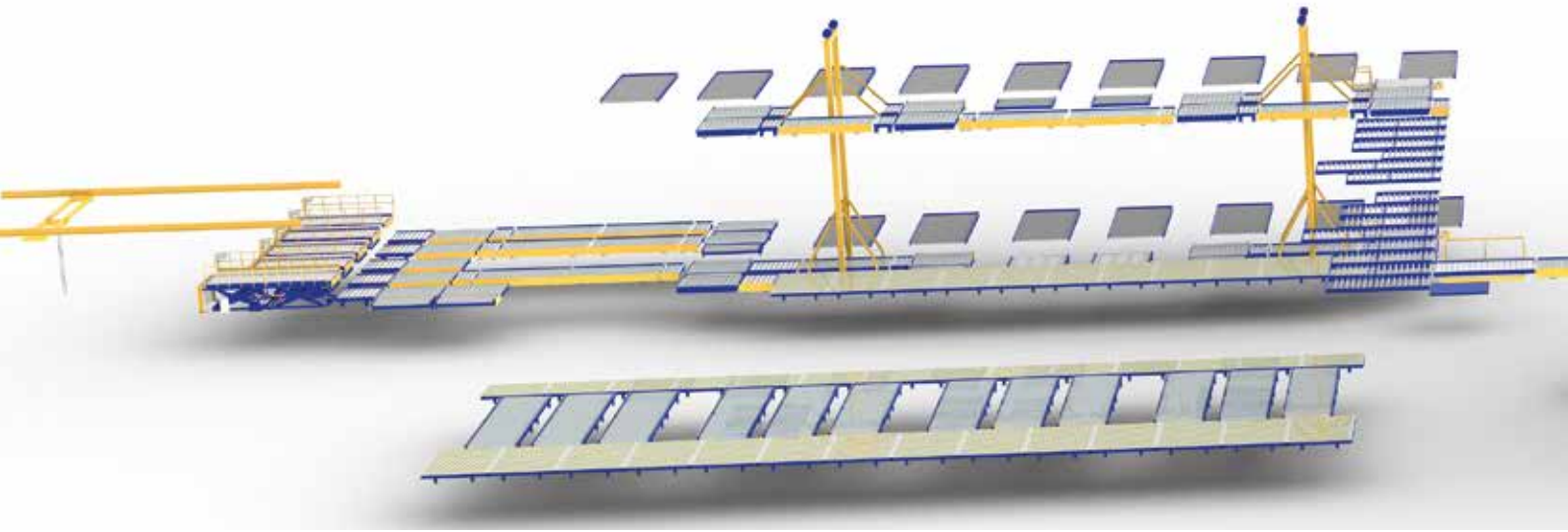
PRODUCT PORTFOLIO

SACO's portfolio includes extensive solutions for the handling of air cargo ULD's (pallets and containers). Ranging from conveyor decks, truck docks, dolly docks, build-up / break-down workstations, weighing systems, multi-level storage systems incorporating (elevating) transfer vehicles, to SACO's slave pallets system for additional flexibility.

SACO's turnkey approach enables the supply of cost effective integrated hardware and software solutions for the control and management of air cargo handling and storage systems. This can vary from a standard PLC control system to overall Material Handling Software and management ITsystems.

REFERENCES

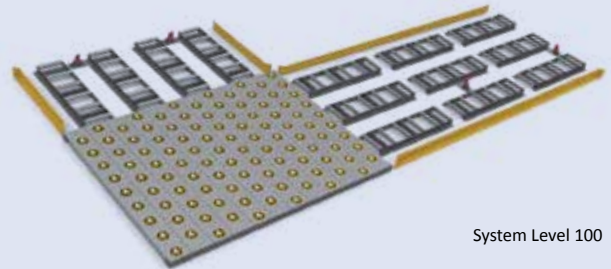




SYSTEM LEVEL 100

- System height: 100 mm
- Components:
- Roller track - units with 3 or 6 rollers
 - Ball deck
 - Castor deck
 - Pallet stop - single / double
 - Side guides

Budget cargo handling system, for manual manoeuvring of ULD's.

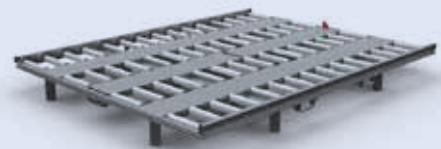


System Level 100

SLAVE PALLET SYSTEM

- System height: 270 mm
- Components:
- Pallet Master ride-on,
 - alternatively Pallet Master pedestrian
 - Slave Pallet - 10ft NEP / WEP - Open / closed
 - Slave Pallet Ball deck - 10ft
 - Slave Pallet Castor deck - 10ft

Flexible cargo handling system, for handling of ULD's.



Slave Pallet open - 10ft NEP

SLAVE PALLET SYSTEM - PALLET MASTER

- Turning circle: Radius 3,200 mm
- Lift capacity: 8,000 kg
- Lift stroke: 185 - 550 mm, to enable docking of slave pallets to conveyors at 508 mm.

*Pallet Masters for manoeuvring of ULD's on slave pallets
Battery powered with 48 VAC system.*



Pallet Master ride-on

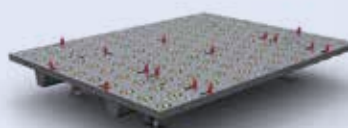


Pallet Master pedestrian

SYSTEM LEVEL 508 - MANUAL

- System height: 508 mm
- Components:
- Roller deck-10ft / 15ft / 20ft NEP / 10ft WEP
 - Ball deck - 10ft
 - Castor deck - 10ft
- Options:
- Pallet stops
 - Weighing System

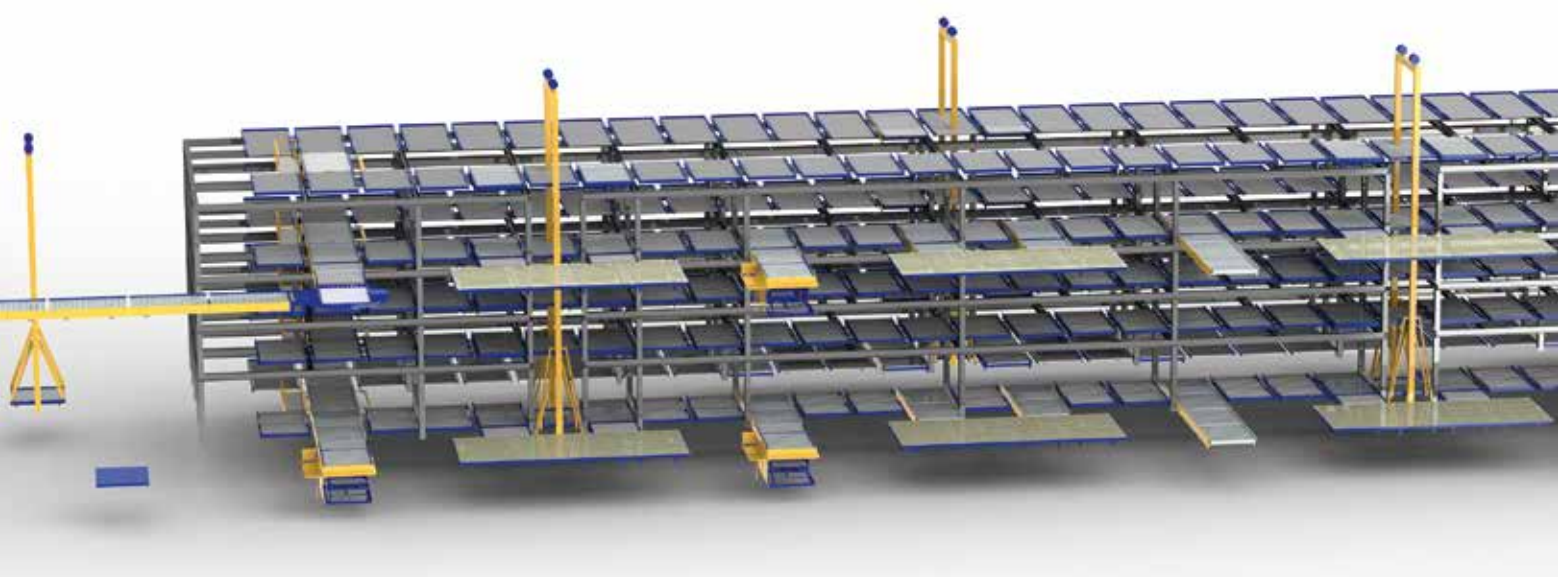
Cargo handling system, for manual manoeuvring of ULD's at Dolly height.



L508 - Castor deck 10ft



L508 - Roller deck 10ft WEP



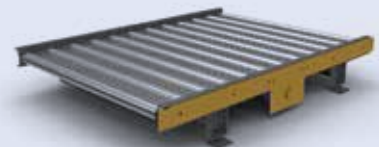
SYSTEM LEVEL 508 - POWERED

System height: 508 mm

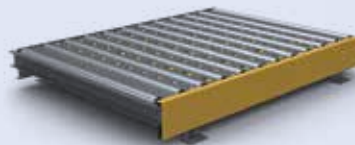
- Components:
- Motor powered roller deck – 10ft / 20ft NEP / 10ft WEP
 - Right Angle deck - 10ft
 - Turn table with Motor powered roller deck or Right angle deck - 10ft

- Options:
- Manual or powered pallet stops
 - Weighing System

Cargo handling system, for automated handling of ULD's at Dolly height.



Motor powered roller deck 10ft NEP



Right Angle deck 10ft



Turn Table – Right angle deck

TRUCK DOCKS

Operating height: 508 - 1,608 mm

Available sizes: 10ft / 15ft / 20ft NEP

- Available decks:
- Motor powered roller deck
 - Roller deck
 - Ball deck
 - Castor deck
 - Drive-over deck

- Options:
- Operator platform
 - Heavy duty rising roller barrier
 - Side shift
 - Weighing system
 - Winch
 - Container rotation section

Truck docks for loading and unloading ULD's to and from trucks.



Truck Dock - 20ft NEP

DOLLY DOCKS

Operating height: 508 mm

Available sizes: 10ft / 15ft / 20ft NEP / 10ft WEP

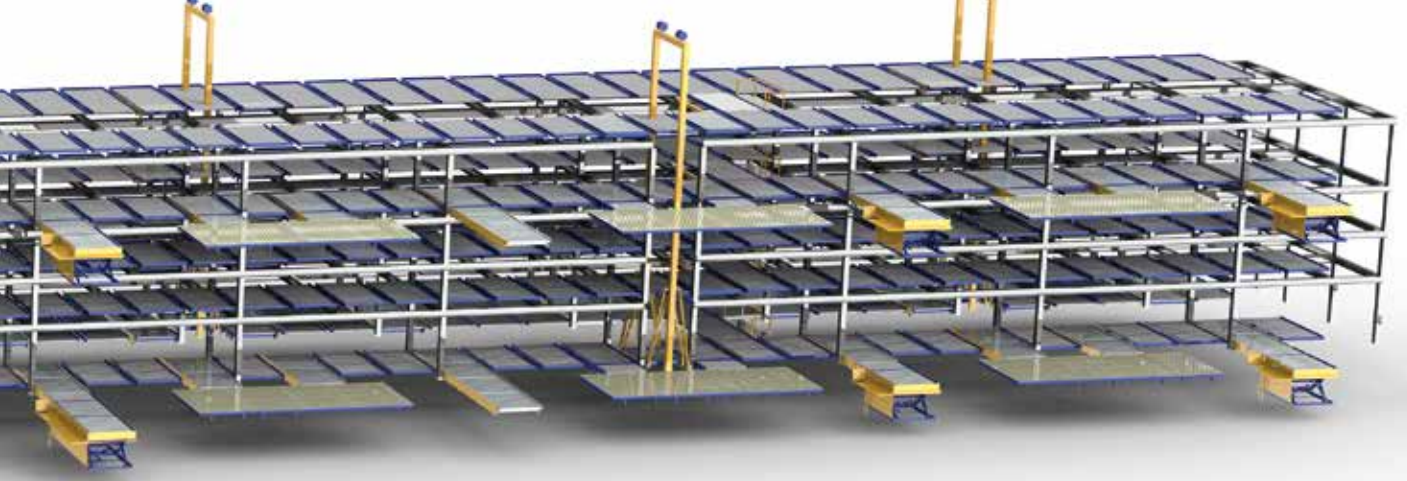
- Available decks:
- Motor powered roller deck
 - Roller deck
 - Ball deck
 - Castor deck

- Options:
- Scissor lift
 - Heavy duty protection barrier
 - Side shift
 - Weighing system

Dolly docks for loading and unloading ULD's to and from dollies.



Dolly dock – 10ft NEP



We take care!

BUILD-UP BREAK-DOWN WORK STATIONS

- Operating height: 508 mm above floor level
 1,400 mm below floor level
- Available sizes: 10ft / 15ft / 20ft / 2 x 10ft NEP / 10ft WEP
- Available decks:
- Motor powered roller deck
 - Roller deck
 - Ball deck
 - Castor deck
 - Flat steel deck
 - Drive-over deck
- Options:
- Weighing system

BUBD Work stations for the build-up and break-down of ULD's.



Build-up Break-down Work station – 20ft NEP

TRANSFER VEHICLES (TV)

- Operating height: 508 mm
- Available sizes: 10ft / 15ft / 20ft / 10ft WEP
- Options:
- TVU; Transfer Vehicle prepared to enable upgrading to a 2-level ETV
 - Weighing system
 - Automatic or semi-automatic operation

Transfer Vehicles for automatically receiving, holding and transferring ULD's in a single level storage deck system.



Transfer Vehicle – 20ft NEP

ELEVATING TRANSFER VEHICLES (ETV)

- | | | |
|-------------------|-----------------------|-----------|
| Typical operating | 1 st level | 508 mm |
| Heights: | 2 nd level | 4,008 mm |
| | 3 rd level | 7,508 mm |
| | 4 th level | 11,008 mm |
- Available sizes: 10ft / 15ft / 20ft / 10ft WEP
- Options:
- Weighing system
 - Automatic or semi-automatic operation

Elevating Transfer Vehicles for automatically receiving, holding and transferring ULD's in a multi level storage deck system.

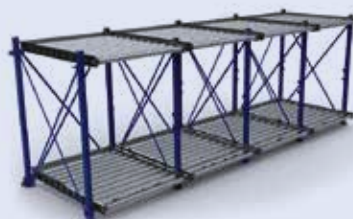


Elevating Transfer Vehicle 10ft NEP

FRICION POWERED ROLLER DECKS

- Operating height: 508 mm
- Available sizes: • 10ft / 15ft / 20ft NEP / 10ft WEP

Friction powered roller decks for storage of ULD's are installed in single level or multi-level racking structures.

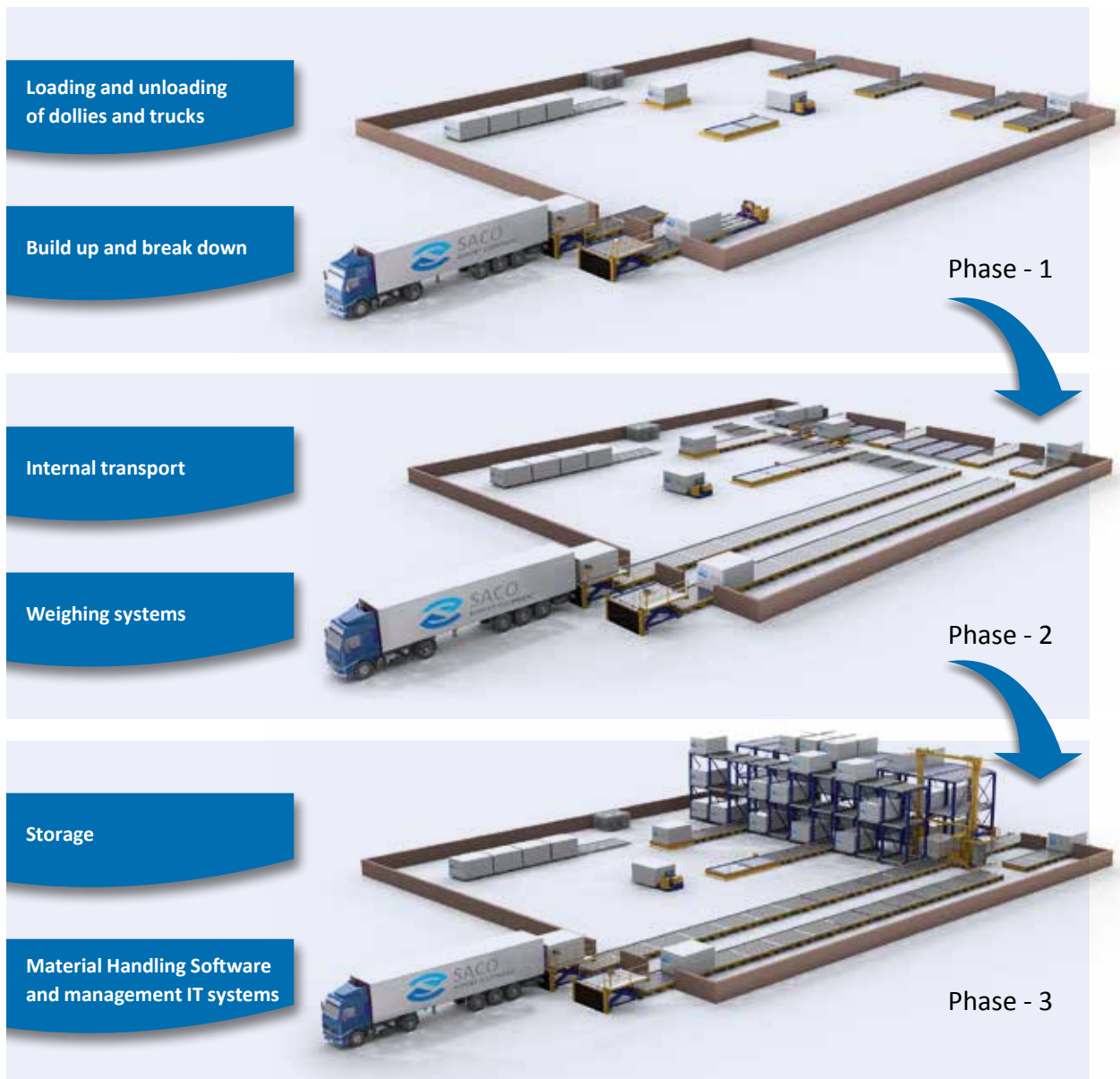


Friction powered roller deck 10ft NEP



We take care!

SACO, your turn key supplier for a wide range of applications and investment plans.
As cargo volumes grow, let your system evolve through phases with SACO's modular equipment design.





GENERAL AIR CARGO

Based on 5 decades of relevant experience, SACO has a full set of handling equipment available to configure any solution that may be required.

This includes storage and conveyor decks, truck docks, dolly docks, workstations, scissor lifts, ULD hoists, (elevating) transfer vehicles ((E)TV's, pallet masters / slave pallets, Depending on the required capacity, ULD storage systems can be based on ETV's or on the Lift & Run principle incorporating multiple TV's and hoists.





ULD Handling and storage solutions

POSTAL AND EXPRESS PARCEL

Speed and flexibility are of the essence with Postal and Express Parcel handling. SACO has developed a reliable set of standard equipment for ULD handling dedicated for this sector. This is mainly based on modular castor decks, roller decks, truck docks, and integrated weighing systems.



PERISHABLE AIR CARGO

The handling of perishables such as flowers, fruits, vegetables, fish, meat, and medicines etc. requires special attention. Not only is this related to keeping the cool chain intact, or segregation and storage in independent temperature controlled conditions, but also the handling equipment is to be suited for the ambient conditions and dedicated handling requirements.





- References
- Local Sales & Service

Your local representative:

Please visit the website for contact details of your local representative:
www.saco.aero



Industrieweg 2
NL-5731 HR Mierlo

P.O. Box 47
NL-5730 AA Mierlo

T +31 (0)492 430 059
F +31 (0)492 432 713

info@saco.aero
www.saco.aero

a division of SMA BV