

STANDARD EDITION

SD&A

Sage Data & Analytics

Level up your Business Intelligence with this powerful toolkit for Sage 300cloud users



Sage Data & Analytics Standard Edition



SD&A is a powerful BI toolkit for 300cloud users that delivers actionable business intelligence to drive increased revenues, cost savings, and competitive advantage.

Business Intelligence, tailored for you...

SD&A gives you a full suite of pre-packaged, customizable and easy-to-use reports and data visualizations, right out of the box. No programming or coding required!

...based on the best technology:

SD&A is hosted and managed on Microsoft Azure, supported with in-product maintenance and automated upgrades, and backed by our service provider's data security programs. Cloud-hosted and browser-based, SD&A is accessible on mobile, tablet or desktop.

...now and for the future:

Straight away, SD&A will save the average Sage 300cloud user more time on report preparation. You'll get a 360-degree view of your business today, and a decision-making infrastructure that will scale with your business as it evolves.



SD&A Standard features

BI in-a-box

Visualize, interpret and action data from your Sage ERP with SD&A's extensive range of BI resources: reports, dashboards, statements, analytics, and more. They're all available to browse in this eBook.

Automated data management

Quickly gather data from your Sage ERP – including all your customizations – as well as all your other data sources: from your CRM to legacy databases, from Excel spreadsheets to your online analytics...

SaaS flexibility

Pay only for the data warehousing you need with up to 10Gb of online storage for the portions of your financial data that support your reporting and analytical insights. Enjoy full functionality without the headaches of hardware, resourcing, or complex configurations.



SD&A Standard benefits

Instant insight

Interactive sales dashboards, graphical cashflow analysis, detailed and trusted P&L reports... all of this and more is available right out of the box.

Access on-the-go

Enjoy mobile access through a responsive web application, optimized for any desktop or mobile device.

Time savings

With SD&A hosted and managed in the cloud (via the Microsoft Azure platform), maintenance and upgrades are fully automated, allowing you to focus on day-to-day business rather than infrastructure management or version upgrades.



Start your BI journey today with SD&A Standard Edition



SD&A Standard Edition gets your organization's BI journey off to a flying start. You get an out-of-the-box solution that can very quickly and easily be configured to your own business requirements.

It covers all of the areas you report on regularly – plus many you may not have yet considered! SD&A will connect to your instance of Sage 300cloud and be up and running – and allowing you to monitor and view every area of your business – right from day one.

Skip to Page 8 to browse the many BI resources that are included in SD&A. These standardized, best-practice reports, dashboards, metrics, and analytics are perfect for getting your business intelligence journey started quickly and can be further customized with help from your local Sage partner.

Here's what's included in SD&A's Standard Edition

Auto-refreshed, cloud-based reporting with three pre-built modules

- General Ledger
- Accounts Receivable
- Accounts Payable

Ready-made, out-of-the-box analytics

- Six dashboards
- 11 reports
- 55 charts
- 75 KPIs

Access for your team

- Five BI consumer (report reader) seats
- One BI designer (report author) seat

Data from across your organization

- Cloud storage of up to 10GB active financial data
- Covering data from up to two companies
- With one scheduled refresh per day

Help when you need it

- Maintenance and support
- Tailored courses on Sage University

Easy, predictive billing

- A single annual fee
- Includes hosting

Technical checklist

All editions of Sage Data & Analytics also include the following as standard:

- Support for every Sage 300cloud edition
- Automated company consolidation
- Friendly data model
- Incremental load support
- Embedded AOM dictionary for metadata extraction (names, keys, relationships) *
- Automated Optional Fields support*

Data model

- Multi-Segment extraction
- Customizable General Ledger account mapping
- Support for Source account groups, types, and a Common Chart of accounts
- Customizable data security and governance

Analytics

- Multi-company consolidation
- Collaborative platform
- Report distribution by email

* Available for Sage 300cloud only.

Add-ons

Talk to your local Sage sales partner about add-ons and consultancy to assist with customization and configuration.

1. Data Model Design
2. Data source connections
3. Data storage
4. Additional BI designer seats
5. Additional BI consumer seats



Your Standard Edition BI resources

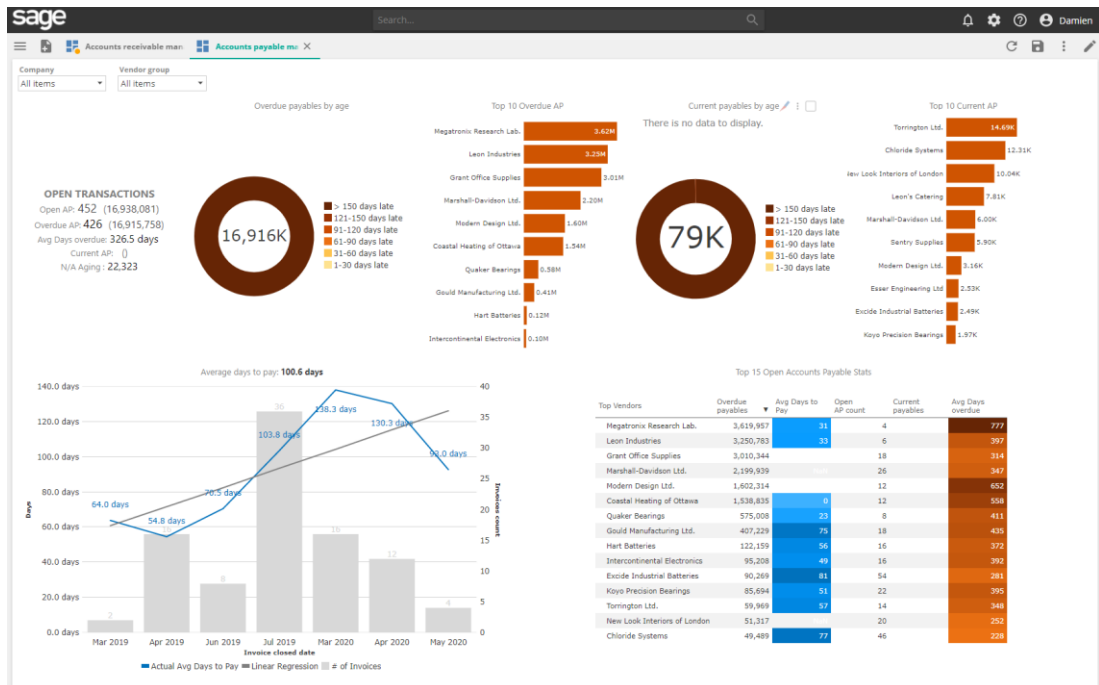


Across the following pages, we'll explore the many dashboards, analytics, and visualisations included in the Standard Edition of Sage Data & Analytics.

- **Accounts Payable manager dashboard**
- **Accounts Receivable manager dashboard**
- **Chief Financial Officer dashboard**
- **Income Statement dashboard**
- **Cash Flow dashboard**
- **Expenses Analysis dashboard**
- **Statement of Profit or Loss**
- **Statement of Financial Position (Balance Sheet)**
- **Trial Balance**



Accounts Payable Manager Dashboard



This dashboard includes the following resources:

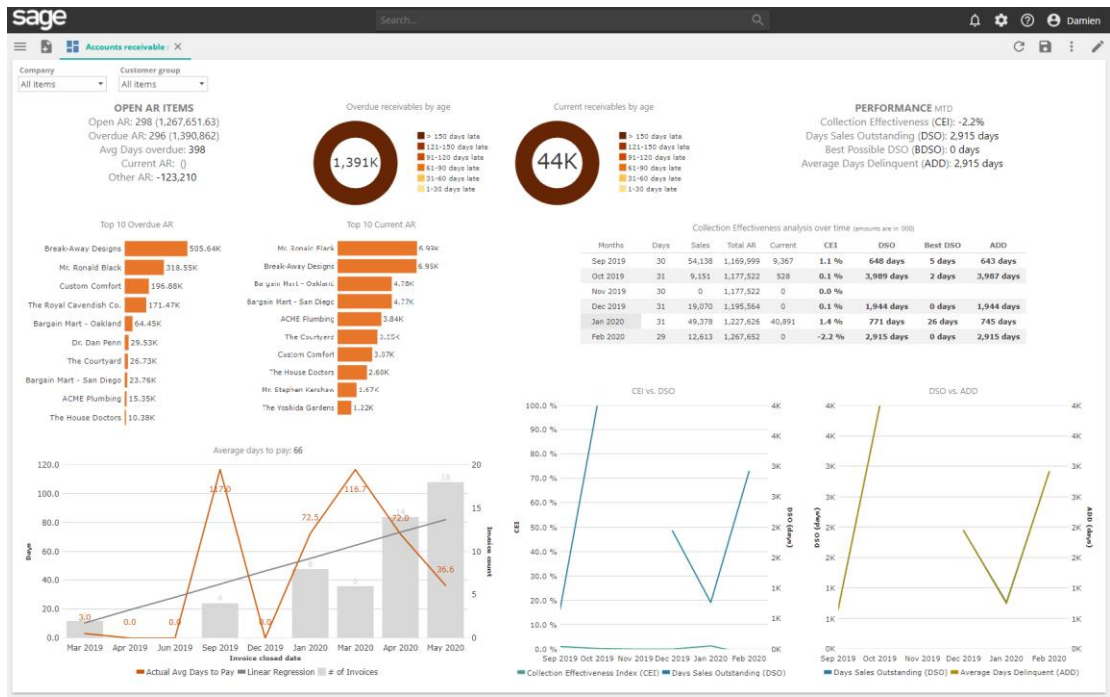
Key metrics to get you started include:

- Open transactions card
- Overdue payables by age
- Top 10 overdue AP
- Top 10 suppliers with largest overdue AP
- Current payables by age
- Top 10 current AP
- Top 10 suppliers with largest AP balance not paid
- Average days to pay
- Top open accounts payable
- Top 15 overdue suppliers

- Avg Days overdue
- Avg days to pay
- Avg amnt / invoice



Accounts Receivable Manager Dashboard



This dashboard includes the following resources:

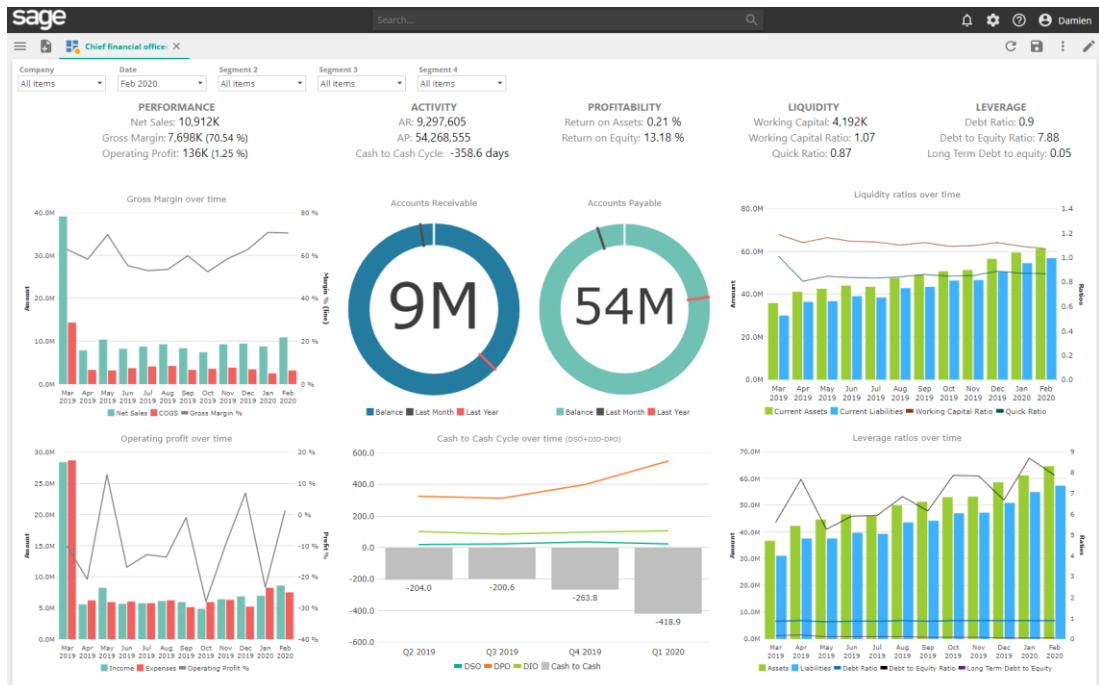
Key metrics to get you started include:

- Open AR items card
- Overdue receivables by age
- Current receivables by age
- Performance MTD card
- Top 10 overdue AR
- Top 10 customers by overdue AR
- Top 10 current AR
- Top 10 customers by AR not past due
- Collection Effectiveness analysis over time
- Average days to pay
- Collection Effectiveness Index (CEI) vs. Days Sales Outstanding (DSO)
- DSO vs Average Days Delinquent (ADD)

- Avg Days overdue
- Avg days to pay
- Collection Effectiveness (CEI)
- Days Sales Outstanding (DSO)
- Best Possible DSO (BDSO)
- Average Days Delinquent
- Average Days Delinquent (ADD)



Chief Financial Officer Dashboard

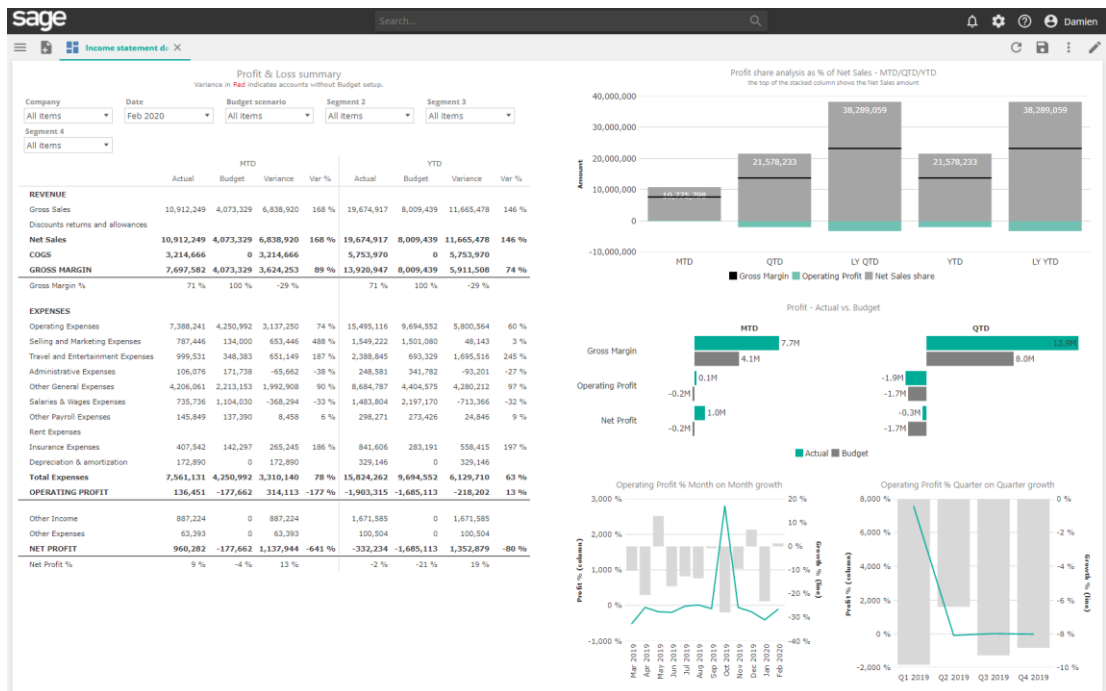


This dashboard includes the following resources:

Key metrics to get you started include:

- Performance card; Activity card
- Profitability card
- Liquidity card; Leverage card
- Gross Margin over time
- AR gauge, AP gauge
- Liquidity ratios over time
- Operating Profit over time
- Cash to Cash Cycle over time
- Profitability ratios over time
- Leverage ratios over time
- Gross margin
- Operating Profit; OP%
- Cash to Cash Cycle
- Return on Assets
- Return on Equity
- Working Capital
- Working Capital Ratio
- Quick Ratio; Debt Ratio
- Debt to Equity Ratio
- Long term Debt to Equity Ratio
- DSO, DIO, DPO

Income Statement Dashboard



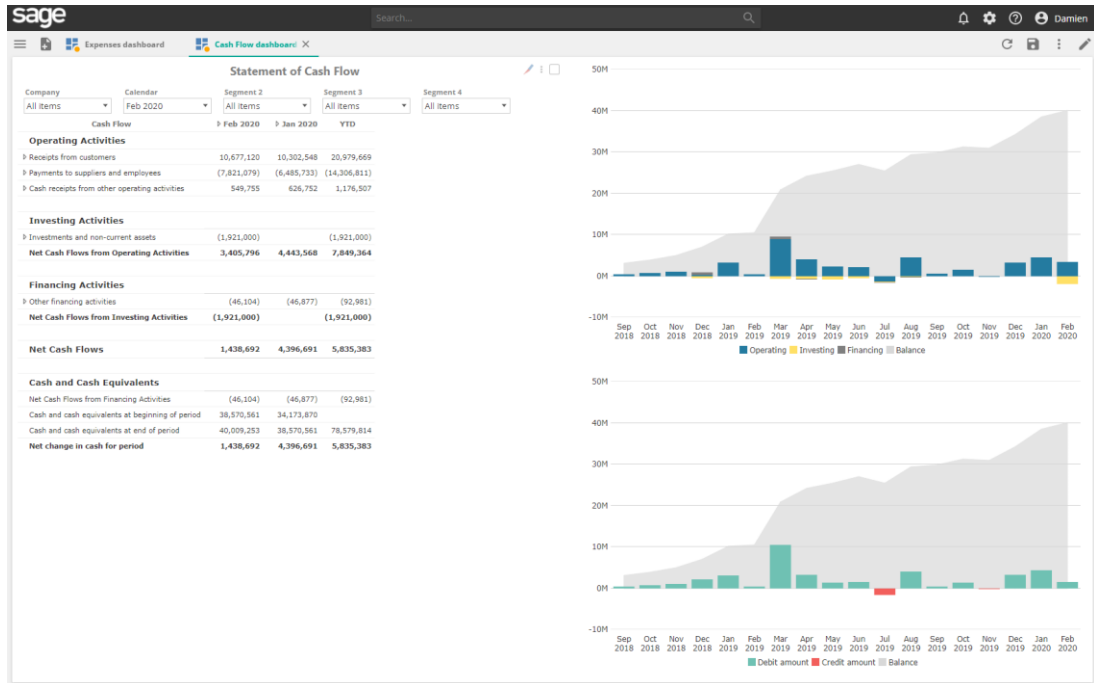
This dashboard includes the following resources:

- Income Statement
- Profit share analysis as % of Net Sales
- Profit – Actual vs. Budget
- Operating Profit % Month on Month growth
- Operating Profit % Quarter on Quarter growth

Key metrics to get you started include:

- Gross margin
- Operating Profit
- Operating Profit %
- EBITDA; EBITDA %
- EBIT; Net Profit
- Net Profit %
- Net Sales share
- Operating Profit MoM Growth
- Operating Profit QoQ growth

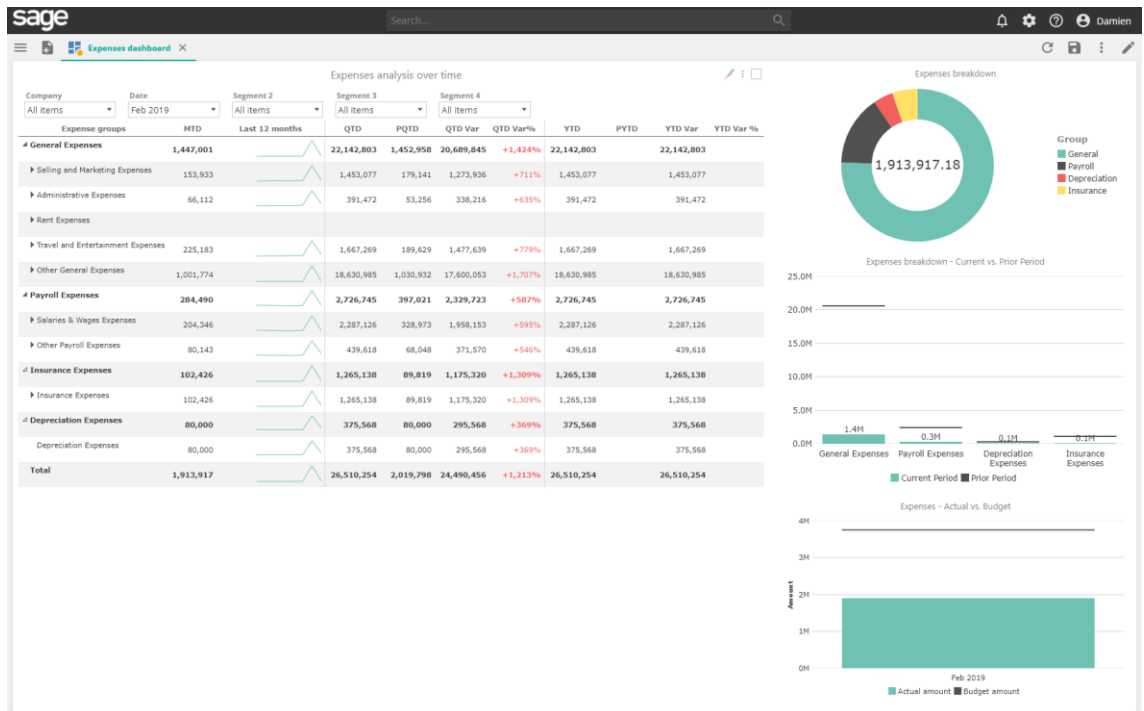
Cash Flow Dashboard



The Cash Flow dashboard is the main dashboard for monitoring all your operational, investing and financing cash flows. SD&A automatically classifies your chart of accounts into account types and cash flow categories, so you don't have to build custom reports. Cash flows can be analyzed by increase/decrease, categories, and dimensions over time.



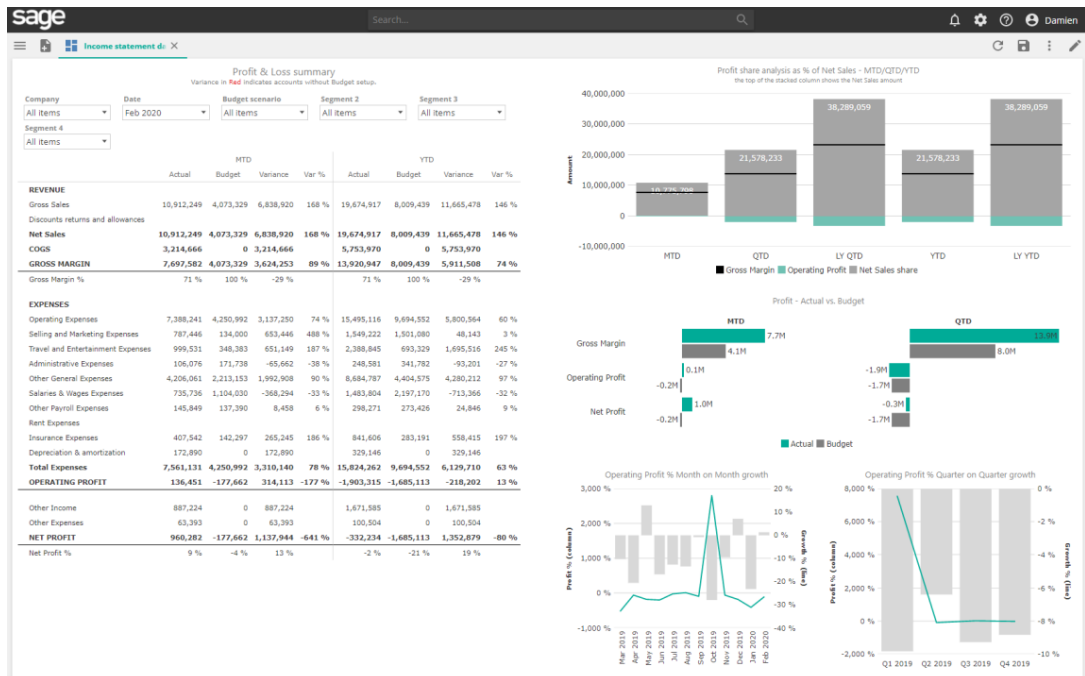
Expenses Analysis Dashboard



Analyze your businesses' expenses by category over time and at a glance. Determine the biggest expenses and find outliers that represent opportunities to optimize your costs.

SD&A automatically categorizes your expense accounts into its own account categories, and lets you expand and drill through to see the underlying expense transactions.

Statements and Reports



Statement of Profit or Loss (Income Statement)

As pictured here.

Statement of Financial Position (Balance Sheet)

Also include, this report returns opening balance, net movement, and closing balance for the selected period

Trial Balance

Also included, the Trial Balance report returns opening and closing balances for a selected period by account.