



IDENTITY **CheckUP**

Sample Report for
ACME Corporation

February 2017

Table of Contents

1	Identity CheckUP Summary	2
1.1	Summary of Overall Condition	4
1.2	Summary of Recommendations	4
2	Detailed Findings	7
2.1	IdentityIQ Infrastructure.....	7
2.1	Review Applications, Connectors, Correlations, Provisioning.....	10
2.2	Review Aggregation Schedules and Refresh Times	11
2.3	Review Object Attribute and other Configuration Definitions	12
2.4	Review Email Server configuration	12
2.5	Review SSO and Pass-Through Authentication Configuration	12
2.6	Review Defined Certifications in the System”	13
2.7	Review HR feed and Manager Hierarchy Items.....	13
2.8	Review LCM Configurations.....	13
2.9	Review Exported XML Artifacts and Source Control.....	13
2.10	Review Role Configuration and Role Mining Results.....	14
2.11	Review Load Balancer Configuration and SSL Setups.....	14
2.12	Review Configuration Settings	14
2.13	IdentityIQ Rule Results	14
2.14	Database Performance Tests Rule Results	14
3	Document Revision History	16
4	Appendix: Additional Context	17
4.1	Database Table Sizing	17
4.2	Splitting up of the Identity Refresh Task	18

Table of Figures

Figure 1 – Current Architecture	7
Figure 2 – Recommended Architecture	7

SAMPLE

1 Identity CheckUP Summary

SailPoint conducted an Identity CheckUP review of ACME Corporation’s IdentityIQ deployment. The purpose of an IdentityIQ CheckUP is to:

- Review an IdentityIQ deployment and identify ways to improve performance, stability, scalability, and maintainability
- Highlight best practices applicable to ACME’s IdentityIQ deployment

This report details the findings from that review.

1.1 Summary of Overall Condition

The IdentityIQ environment at ACME is in a somewhat unhealthy condition. It is an implementation that been in production for several years and it does not have the latest patch applied nor has it been upgraded to SailPoint’s latest version in over a year. SailPoint recommends that 2 more servers be dedicated to batch processing in the production environment to allow the nightly aggregations and refresh tasks to complete prior to the start of everyday business activities. The additional servers will also ensure that certifications can run without affecting the UI performance.

Hardware specifications are acceptable for the size of IdentityIQ deployment at ACME. They are within the recommended size in terms of core but not adequate in terms of number of servers and memory size. While there are always areas within the solution that can be improved, it is clear that ACME is making the right decisions to build a successful Identity and Access Management program where the business sees value from the product. This deployment of IdentityIQ will be poised for long-term success once the recommended changes reported here are implemented.

1.2 Summary of Recommendations

There are a number of improvement recommendations that SailPoint has made in this report that will help improve the existing deployment of IdentityIQ at ACME Corporation. Some of these recommendations are prioritized in the table below.

Table 1 - Prioritized Recommendations

Priority	Description	Status	Priority
Stay up to date on current versions and patches of IdentityIQ	Try to stay as close to the current patch level and version as possible. Each patch and upgrade offer significant feature and performance enhancements. 7.0 offers an enhanced UI for ease of use and modernization.	Not Started	High
Create Site-Specific Encryptions Keys	The Data Encryption chapter (Chapter 8) in the IdentityIQ Administration Guide will step you through this process. We will discuss this in our Identity CheckUP report review call to enable your team to make the necessary updates. https://community.sailpoint.com/docs/DOC-2031	Not Started	High

Review and implement performance recommendations	The Performance Management Guide should be reviewed. Based on what we saw during the onsite analysis of the ACME environment, particular attention should be paid to ensuring the Java Recommendations section is followed closely as this will have a significant improvement on the performance of the ACME environment. https://community.sailpoint.com/docs/DOC-4561	Not Started	High
Follow JVM Best Practices	The current JVM settings for the UI servers do not allow efficient throughput due to the low Heap allocation. Below is a link to our Java JVM memory tuning guide. Please ensure that the UI and task server recommendations configured in the ACME environment match the specifications for a Large deployment as called out in the guide. https://community.sailpoint.com/docs/DOC-6252	Not Started	High
Add additional servers to production	Add 2 additional servers for dedicated batch processing.	Not Started	High
Replace older versions of jar files that ship standard with IdentityIQ	We recommend replacing the jdbc drivers that come with the IdentityIQ package with latest versions from the vendor. These drivers can be downloaded here .	Completed	High
Investigate large table row counts on certain database tables	The key tables for this exercise at ACME are spt_process_log and spt_audit_event. See section 4.1 for the specific details around these tables.	Not Started	High
Correct configuration and definition of aggregation schedules and refresh tasks	Several of the aggregation tasks have a number of options set, such as "Promote managed attributes" & "Disable optimization of unchanged accounts", which are known to contribute to performance degradation, causing long aggregation times.	Started	High
Enable delta / partitioned aggregation for each application that supports it	This configuration change will be an "easy win" to provide better system performance and opens new possibilities in terms of task schedules; more frequent aggregations can lead to data that is more accurate in the system. As more applications are added to the system, task tuning is critical to maintaining a healthy system.	Started	High
Address database performance	The database performance test is reporting results below SailPoint recommendations with respect to application server to database commit and latency times. Ideally this numbers should be aiming for 9m for 1k, 17m for 4k and 20m for 8k. ACME is currently reporting 14m for 1k, 22m for 4k, and 28m for 8k.	Not Started	High
Determine the need for identity snapshots	Identity snapshots are expensive to take and keep on the system. They are currently being used for certain processes, but data can be persisted in other ways that could be more efficient. Review with your internal team what is required and stop taking unnecessary snapshots.	Not Started	High
Understand the aging Work Items and Workflow Cases	There are several hundred Work Items and Workflow Cases older than 30 days. These are large objects in the database and can cause non-performant behavior. If the Work Item/Workflow Case is not valid, clean up.	Not Started	Medium

Use log4j to print debug messages on rules and workflows	System.out.println is still used to print debug messages in production. This results in performance degradation. SailPoint highly recommends that ACME replace them by implementing log4j for debugging.	Not Started	Medium
Service Accounts management	SailPoint's recommendation is to have an owner attribute and have it linked to an identity who will be responsible for the account. We noticed quite a few service accounts that are not set up this way. We recommend cleaning this up to comply with the best practice design implementation.	Not Started	Medium
Add index entries to the Identity attributes hibernate file	Only 5 index entries were defined in the Identity Hibernate file. Need to add the missing 7 entries.	Completed	Medium
Implement SSL configuration	SailPoint recommends that ACME configure SSL for the end user population.	Not Started	Medium
Customization rule	Improve performance by optimizing/eliminating the loop logic being used to exclude account groups.	Not Started	Medium
Improve certification performance by selecting the right options	Options such as including policies and roles can slow down the generation of certifications. Use these options in different certifications or sparingly.	Not Started	Medium
Use backgrounded workflows for JML processes	Keeping a JML workflow, initiated by the Process Events option in the refresh, can cause locking and other unintended problems. Setting these processes to run in the background will allow the refresh to finish appropriately.	Not Started	Medium
Clean up null parent IDX issues	IDX issues involving a null parent are typically harmless to the operation of the system. However, they are records on the database that are orphaned and ultimately not needed. We recommend you remove these.	Not Started	Low
Implement SailPoint Services Standard Build Process	ACME will benefit immediately when they begin to follow best practices with respect to using the Services Standard Build process. This will improve testing of new IdentityIQ settings in sandbox/test environments and then "promoting" those tested and approved settings to the production environment.	Not Started	Low
Use a valid Workgroup as the default Work Item owner	Several Work Items are owned by spadmin. That Identity should not be used since the Work Item queue is most likely not monitored.	Not Started	Low
Review applications schema	SailPoint recommends that ACME check to see if all the attributes on the schemas are necessary and remove the ones that are not needed.	Not Started	Low
Indexes rebuilt	SailPoint recommends that database indexes be rebuilt at least weekly.	Not Started	Low
Fundamentals training for at least two team members	With the recent turnover at ACME, the new ACME operational staff will greatly benefit from sending at least two resources to SailPoint's "Fundamentals of IdentityIQ Implementation" training class.	Not Started	Low

2 Detailed Findings

2.1 IdentityIQ Infrastructure

This section documents findings from comparing the current hardware sizing and IdentityIQ installation against the SailPoint recommendations as described in:

- Product documentation for the IdentityIQ release in use by ACME Corporation
- IdentityIQ Hardware Sizing Guide (<https://community.sailpoint.com/docs/DOC-4685>)
- Performance Optimization Checklist (<https://community.sailpoint.com/docs/DOC-1965>)
- Performance Management Guide (<https://community.sailpoint.com/docs/DOC-4561>)

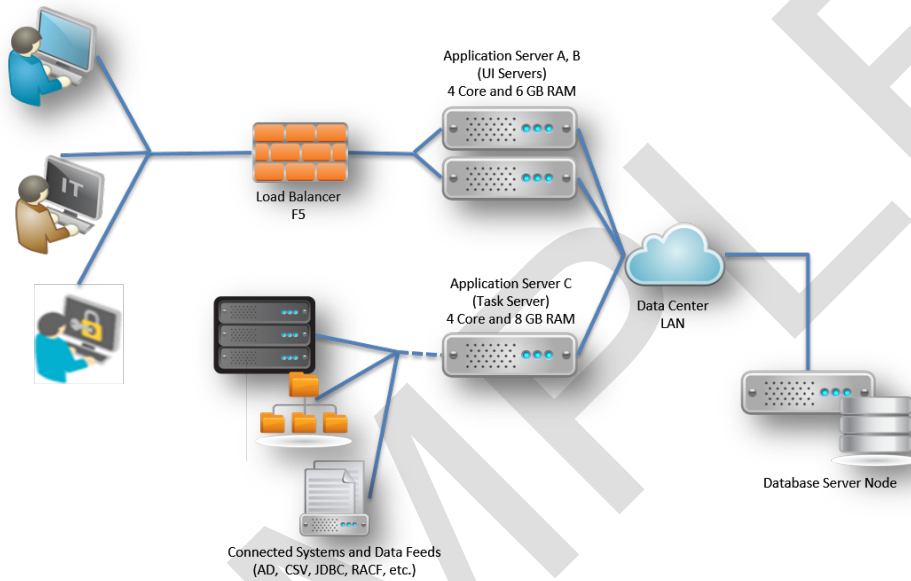


Figure 1 – Current Architecture

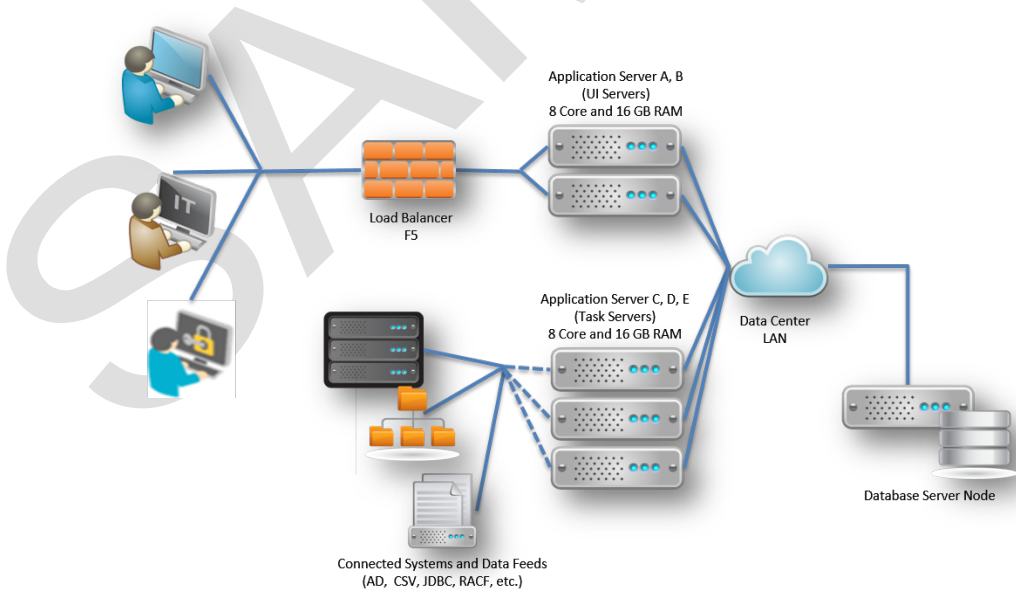


Figure 2 – Recommended Architecture

2.1.1 Environment Information

This information is used to compare the current hardware sizing and IdentityIQ installation against the SailPoint performance recommendations.

Sizing Questionnaire	Response
IdentityIQ version and patch level (6.xpn)	6.4p4
Java Platform (Sun, Oracle or IBM JDK 6/7)	Oracle Java 1.8.0_74-b02
JDBC Driver version	SQL Server 4.0
Systems Setup and Configuration	
Application server used (Tomcat/WebLogic/WebSphere) and version	Apache Tomcat
Operating System information (Windows, Linux, etc.) and version	Red Hat Linux
JVM settings	UI: -Xms512m -Xmx6144m -XX:MaxPermSize=512m Task: -Xms512m -Xmx8192m -XX:MaxPermSize=512m
Database Engine (Oracle/MySQL/MS SQL Server) and version	SQL Server 2012
Number of UI and Task servers	2 UI / 1 Task
Physical memory	UI: 6GB Task: 8GB
Number of CPUs	4 Cores
CPU chipset	64-bit
Disk type and size	50 GB Virtual
Is heap set for large pages?	No
Is JVM set for large pages?	Yes
Is garbage collection policy set?	Yes
If VM server, is memory ballooning disabled?	No
If VM server, are resources dedicated to IIQ & not shared?	Shared
Database Information	
Is the DB shared or dedicated? (If shared it could lead to slowness)	Dedicated
Hardware Specification for Database Server (Physical/Virtual)	Virtual
If running on VM, are resources shared?	No
Memory size	64GB RAM
OS type	Linux
Total sessions	32767
Database table space size	IdentityIQ tablespace size is 77.5 GB Overall database size is 287 GB
Database physical storage size	2.5TB
Number of CPUs and threads	8 CPU, 50 threads (cost threshold for parallelism)
How often are statistics run	Weekly

How often are indexes rebuilt?	Monthly
What is the percentage of identity deletion and creation per month?	25
RAM available to the Server, or any configuration parameters of the server	SQL consumes 62GB RAM
Network Topology	
Is IdentityIQ co-located with its database server? (It must be) <ul style="list-style-type: none"> • Same building • Same LAN segment preferred • No intervening firewalls • No remotely hosted DB “services” 	IdentityIQ co-located with its database server in same Location & LAN. No firewall intervention between APP and DB No remotely hosted DB services
Round-trip ping time from IIQ app server to the DB (300µs not ms or less)	0.600ms average SailPoint recommends a latency between application servers and database servers of 0.3ms (300µs) or lower for 1K packets.
Traceroute	Trace route test not performed.
Database and webservers using the same subnet	No
Latency between webservers and database	Web Server cannot communicate with Database server
Latency between webservers and browser	N/A
Latency between database and load balancer	DB does not utilize VIP
Load balancer protocol	http
Number of connectors? (Https and HTTPS?)	
Browsers used (Internet Explorer/Firefox/Chrome) and version	Internet Explorer

Recommendation	Description	Status	Priority
Add additional server to production	Add 2 additional servers for dedicated batch processing.	Not Started	High
Review and implement performance recommendations	The performance optimization of the environment is not optimal for the size of the IdentityIQ deployment and should be adjusted to comply with the recommended sizing. The Performance Management Guide should be reviewed. Pay special attention to the Java Recommendations section and implement the recommendations outlined. https://community.sailpoint.com/docs/DOC-4561	Started	High
Follow JVM Best Practices	The current JVM settings for the UI servers may not allow efficient throughput due to the low Heap allocation. https://community.sailpoint.com/docs/DOC-6252	Not Started	High
Replace older versions of jar files that ship standard with IdentityIQ	We recommend replacing the jdbc drivers that come with the IdentityIQ package with latest versions from the vendor.	Completed	High

Indexes rebuilt	SailPoint recommends that indexes be rebuilt at least weekly.	Not Started	Low
Clean up IDX issues	IDX issues can be harmful to processes, upgrades and patches. Make sure to clean those frequently. Ideally, fix the cause of IDX corruption.	Not Started	High

2.1.1.1 Database Table Size

The database table row counts seem normal to slightly high for this size system. The standout table row counts include the spt_process_log and spt_audit_event tables. Refer to the Database Table Sizing section in the Appendix for more details on these tables.

2.1.1.2 Database Performance Tests Rule Results

The database performance test is not reporting great results with respect to application server to database commit and latency times. These could be an indicator of future performance degradation. See Database Performance Tests Rule Results.

2.1 Review Applications, Connectors, Correlations, Provisioning

This section summarizes the applications configured and the findings related to those applications.

Application	Connector Type	Rules implemented & line count	Provisioning Type	# of accounts	Recommendations
Active Directory	LDAP	Customization Rule Line Count: 34	Direct	250,000	Optimize/eliminate the loop logic being used to exclude account groups.

Area Reviewed	Notes
Quantity, type and configuration of applications	4 Applications, 1 Active Directory, 3 JDBC
Correlation logic for identities, service accounts, manual correlations	The large number of uncorrelated accounts is due to Service Account identities.
Review BuildMap / Customization rules	Conducted code review on Customization rules; logic is quite simple, however there is loop logic being performed to exclude some of the AD groups that is affecting AD aggregation performance.
Direct Provisioning	N/A
Indirect Provisioning	Work Items are not being created during certification remediation, as a result administrators are not being notified that there is an action pending to fulfil the revocation.
Application Schema	A review of schema items showed correctly configured schemas for ACME fields and attributes. Configuration is mostly out of the box; one caveat is that out of the box Active Directory schemas do have a large number of unnecessary attributes.

Recommendation	Description	Status	Priority
Optimize Customization rule logic	Improve performance by optimizing/eliminating the loop logic being used to exclude account groups.	Not Started	Medium
Indirect Provisioning	During this visit the GROUP_PROVISIONING and PROVISIONING fetatureStrings were removed from the AD application configuration so that certification remediation triggers manual action work items.	Completed	Medium
Service Accounts management	Recommendation is to have an owner attribute and have it linked to an identity who will be responsible for the account, the current state does not present an optimal model to manage Service Accounts. Service Accounts Best Practices (https://community.sailpoint.com/docs/DOC-4980) IdentityIQ best practices for managing Service Accounts. Service Accounts Webinar.zip (https://community.sailpoint.com/docs/DOC-2124)	Not Started	Medium
Review applications schema	SailPoint recommends that ACME checks to see if all of the attributes on the schemas are necessary and remove the ones that are not needed.	Not Started	Low

2.2 Review Aggregation Schedules and Refresh Times

This section summarizes the aggregation and refresh processing in ACME Corporation's IdentityIQ installation and related findings.

Each application should be aggregated regularly and run without errors. Refresh Identity Cube should be run after an aggregation cycle and should run without errors. Use of partitioning, delta processing, multiple refresh threads, and parallel aggregation is recommended to improve aggregation & refresh times.

Area Reviewed	Notes
Account aggregations	At the time of inspection, the failure rate is around 60%.
Identity refresh	The error and warning rate is high compared to success rate.
Overall data load schedule	Applications are aggregated in a concurrent manner; however due to several of the aggregation tasks having options, that are known to contribute to performance degradation, ACME has grouped their nightly tasks to run in multiple cycles and each takes about 12 hours to complete.

Recommendation	Description	Status	Priority
Correct configuration and definition of aggregation schedules and refresh tasks	SailPoint provided best practices when defining these tasks. We also talked through optimized aggregation and refresh configuration, and why ACME should remove all options not necessary for the business, such as "Promote managed attributes" & "Disable optimization of unchanged accounts", which are known to contribute to performance degradation. They were removed during this visit, and in combination with adding 8G of RAM, <u>the aggregation times have been reduced from 12 hours per daily sequential task to 2 hours.</u> Going forward ACME will be able to run all aggregation and refresh tasks nightly.	Started	High

Enable delta / partitioned aggregation for each application which supports it	This configuration change will be an “easy win” to provide better system performance and open up new possibilities in terms of task schedules – more frequent aggregations can lead to data that is more accurate in the system. As more applications are added to the system, task tuning is critical to maintaining a healthy system.	Not Started	High
--	---	-------------	------

2.3 Review Object Attribute and other Configuration Definitions

A small number of Identity extended attributes have been defined for items that come from the various data feeds.

Area Reviewed	Notes
Identity attributes	7 Identity attributes are defined and showed in the identity attributes tab.
Account attributes	ACME is not using this feature.
Bundle attributes	ACME is not using this feature.
ManagedAttribute attributes	ACME is not using this feature.
Application attributes	ACME is not using this feature.
Link attributes	Link attributes are defined and no concern has been raised as to how they are configured.
UIConfig object content	The UIConfig changes today are performed via the debug pages which can easily break the UI configuration and cause problems across upgrades. Upgrades will erase any configuration changes that are not exported prior to applying the upgrade.
SystemConfiguration object content	ACME has not make changes to this configuration object.

Recommendation	Description	Status	Priority
XML configuration objects	SailPoint recommends ACME to use the setting importAction="merge" in the UIConfig and system Configuration XML files. Adding this tag and only specifying the modified attributes over the factory default configuration will make these configuration files more resilient for patches and upgrades.	Not Started	Low

2.4 Review Email Server configuration

The ACME email server is configured to send email using SMTP. This feature appears to be configured in accordance with best practices.

2.5 Review SSO and Pass-Through Authentication Configuration

Area Reviewed	Notes
Pass-through authentication	Has pass-through authentication implemented to their AD Domain
SSO Authentication	ACME does not have SSO implemented

2.6 Review Defined Certifications in the System”

How many cert groups: 1230

Cert Items: 175518

ACME has an archive/pruning strategy

2.7 Review HR feed and Manager Hierarchy Items

The HR data is appropriately aggregated and working correctly.

Area Reviewed	Notes
Orphan accounts	7,500 uncorrelated accounts found.
Manager Hierarchy	The authoritative source includes management hierarchy information. This feature was verified as operating correctly.

Recommendation	Description	Status	Priority
Remediate orphan accounts	HR data should be improved so that an attribute might be used to determine whether a record contains a Person/Non-Person data, to avoid having Person accounts wrongly added to applications uncorrelated buckets. Remediating this can improve aggregation performance by reducing the number of links added to the uncorrelated buckets.	Not Started	Medium

2.8 Review LCM Configurations

Area Reviewed	Notes
LCM Configuration	Lifecycle Manager is not used at ACME.

2.9 Review Exported XML Artifacts and Source Control

Area Reviewed	Notes
Build and deployment process	ACME’s build and deployment process is non-existent. Source control is not utilized.

Recommendation	Description	Status	Priority
Implement Services Standard Build	ACME will benefit when they begin to follow best practices with respect to using the Services Standard Build process. This will improve testing of new IIQ settings in a sandbox/test environment and then “promoting” those tested and approved settings to the production environment.	Not Started	Medium
Use a source code control system like SVN	Maintaining source manually is error prone and difficult to control properly.	Not Started	Medium
Upgrade & patches	Details on how to keep the IdentityIQ implementation up-to-date are in the Best Practices - Deployment, Migration, Upgrade, and Artifact Management.pdf in Compass	Not Started	Medium

2.10 Review Role Configuration and Role Mining Results

ACME is not currently using roles.

2.11 Review Load Balancer Configuration and SSL Setups

Area Reviewed	Notes
Load balancer configuration	ACME does not have a Load-balancer.
SSL configuration	ACME not using SSL.

Recommendation	Description	Status	Priority
Implement SSL configuration	SailPoint recommends that ACME configures SSL for the end user population.	Not Started	Medium

2.12 Review Configuration Settings

Area Reviewed	Notes
Audit Configuration	ACME does have auditing enabled for events. SailPoint recommendation is to prune the audit events in a timely manner.
Object Expirations	Object retention policies are in place.
Identity Snapshot Granularity and Lifespan	Implemented.
Log4j Settings	Using RollingFileAppender. System.out.println is being used to print log messages.

Recommendation	Description	Status	Priority
Class Actions	It is recommended that auditing actions be enabled for highly sensitive objects such as Application, Role, UIConfig, Rule, etc.). Actions on most classes should be monitored in production to track unauthorized changes made in production.	Not Started	High
Eliminate use of log4j to print debug messages on rules and workflows	Ensure that System.out.println is not used to print debug messages in production. This can contribute to performance degradation. SailPoint highly recommends that ACME replaces them by implementing log4j for debugging.	Not Started	Medium
Audit Configuration	Use a merge file for the AuditConfig.	Not Started	Low

2.13 IdentityIQ CheckUP Rule Results

[HC Rule Output]

2.14 Database Performance Tests Rule Results

The database performance test is not reporting great results with respect to application server to database commit and latency times. Ideally this numbers should be aiming for 9m for 1k, 17m for 4k and 20m for 8k.

```
> rule "IIQDB Performance Test"
IdentityIQ Database Performance Test
IdentityIQ Version: 6.2p6 dc490da-20150511-114420
DB Performance Test Rule version: 20151218
Executed from Host: IFWIDA01
Executed on Date: 2016-10-03 10:33:44.758
HashMap data sets allocated.
Meter Generate-IIQDB-Test-DataSets: 1 calls, 65556 milliseconds, 65556 minimum, 65556 maximum, 65556 average, top five [65556]
Meter IIQDB-Test-DataSet-1k-All: 1 calls, 12955 milliseconds, 12955 minimum, 12955 maximum, 12955 average, top five [12955]
Meter IIQDB-Test-DataSet-1k-Item: 1000 calls, 12936 milliseconds, 6 minimum, 156 maximum, 12 average, top five [156,131,113,105,98]
Meter IIQDB-Test-DataSet-4k-All: 1 calls, 26976 milliseconds, 26976 minimum, 26976 maximum, 26976 average, top five [26976]
Meter IIQDB-Test-DataSet-4k-Item: 1000 calls, 26951 milliseconds, 17 minimum, 174 maximum, 26 average, top five [174,153,130,113,113]
Meter IIQDB-Test-DataSet-8k-All: 1 calls, 36820 milliseconds, 36820 minimum, 36820 maximum, 36820 average, top five [36820]
Meter IIQDB-Test-DataSet-8k-Item: 1000 calls, 36811 milliseconds, 20 minimum, 254 maximum, 36 average, top five [254,231,192,174,165]
Completed cleanup of DB Performance Test records: 32642 msec.
Success
```

SAMPLE

3 Document Revision History

Revision Date	Written/Edited By	Comments
12/12/2016	[Author Name]	First Draft
12/15/2016	[Author Name]	AS Team Review
12/17/2016	[Author Name]	Changes made based on feedbacks from AS team

SAMPLE

4 Appendix: Additional Context

4.1 Database Table Sizing

There are a number of IdentityIQ tables that have no automatic pruning functionality.

spt_identity_request	represents the active and completed access requests in the system. These contain summary information of the workflows that were initiated in the system.
spt_process_log	represents the monitoring and metering of workflow executions. Turn off workflow monitoring if the workflow metering metrics are not being used.
spt_request	represents the active and completed requests in the system. These contain information on operations executed by the Request Processor. Older version of IdentityIQ did not delete request objects from the system after execution, but now typically they are.
spt_identity_snapshot	represents the identity snapshots of access at the configured interval. This feature is typically not used and should not be turned on unless required.
spt_provisioning_request	represent incomplete provisioning requests. The number of incomplete provisioning requests should be monitored and should remain close to 0. Old objects should be investigated and could indicate non-functional behavior.
spt_syslog	These are the SysLog entries and typically represent exceptions and errors in the system. The entries should be investigated and corrected so that the SysLog can correctly indicate when the system is truly having issues. Ideally this table would be empty.
spt_task_result	Represent the results from running tasks such as aggregations and identity refresh. Task results also include reports and role mining results and can be quite large. These should be pruned regularly.
spt_workflow_case	Workflows in process. If workflow case numbers begin to increase and they are not associated to active work items, they need to be investigated as to why the object still exists in the system. These objects are fairly large XML objects and can cause database performance issues with respect to transaction logs and database backups. These performance issues can happen during the Perform Identity Request Maintenance task execution.
spt_audit_event	The audit events. These should be archived (or transferred to a data warehouse for historical reporting) and pruned regularly.
spt_identity_archive	Represents previous states of "Identity" objects in the IdentityIQ system. Rows in this table correspond to instances of the sailpoint.object.IdentityArchive API object. The rows in this table contain XML serializations of sailpoint.object.Identity objects that are used during workflow trigger evaluation. Data in the spt_identity_archive is deleted only when the corresponding Identity (spt_identity) row is deleted. There is no regular task in IdentityIQ that removes records from this table that does not immediately replace the removed row with a newer row. https://community.sailpoint.com/docs/DOC-4973

4.2 Splitting up of the Identity Refresh Task

The Identity Refresh Task is generally split in to multiple tasks so that a minimal number of options are executed in each task. As more options are chosen in a single refresh task, the execution time is extended. Refresh task partitioning should be enabled or the number of refresh threads should be increased.

Here are some examples of different Identity Refresh Task configurations.

An identity related refresh task includes the options:

- Refresh Manager Status
- Refresh Identity Attributes
- Process Events

A role related refresh task includes the options:

- Refresh Identity Entitlements for all links (use this option with care)
- Refresh assigned, detected roles and promote additional entitlements

A refresh task that is related to other items includes the options:

- Promote managed attributes
- Refresh role metadata for each identity

A provisioning refresh task includes the options:

- Provision assignments
- Synchronize attributes

Each refresh task should be executed against the appropriate identities. This is often only the identities aggregated from an authoritative source. The filter required for this is “correlated == true”.

PLEASE NOTE:

THIS REPORT IS INTENDED AS A SAMPLE. EXACT CONTENTS OF YOUR FINAL REPORT WILL VARY AND WILL BE SPECIFIC TO YOUR ENVIRONMENT AND IDENTITYIQ INSTALLATION.

IF YOU HAVE ANY QUESTIONS REGARDING THIS SAMPLE REPORT OR IF YOU WOULD LIKE TO SPEAK TO US ABOUT A CHECKUP, PLEASE CLICK THE LINK BELOW.

<https://www.sailpoint.com/identity-health-check/>

SAMPLE