

ANNUAL
**SPRINGLAKE ANGUS
& GUESTS SALE**

FRIDAY
APRIL 3RD
6 PM CT

Where the Legacy of RR Rito 707 Continues!



SLA BG Rito 707
Reg# 17427713

SLA RR Rito 707 6014
Reg# 18512529



115 HEAD

2 YEAR OLD BULLS
YEARLING BULLS
YEARLING HEIFERS
OPEN & BRED COWS

Located at the SpringLake Angus Center!
50475 887 RD Lynch NE 68746



Gene, Kelcey and Teal Timperley



Gene and Kelcey Timperley, owners
50077 888th Road
Lynch, NE 68746
Gene & Kelcey home phone, (402) 569-3442
Gene cell, (402) 336-7951
Kelcey cell, (402) 394-1880
sprnglake@threeriver.net
www.springlakeangus.com

We would like to welcome you to our 8th Annual production sale and thank all of you that have supported us over the last half a century. We would not be here if it weren't for your support.

We have tried to stay true to the Angus breed, looking at the overall picture instead of just focusing on one trait within today's breeding. If the beef industry is going to survive in today's world, we have to look at the big picture, not just the trait of the month. Here at SpringLake Angus, we have bred for the table because we think the final product is the most important. We believe it's not always the biggest, but the fastest gaining on feed, % hung and Prime and the one thing nobody talks about: taste. Today's world consists of fake and imported meat which is why it is more important than ever to have a superior product for the consumer. SpringLake Angus has been selling direct to our customers for years and they always tell us that they can't eat store bought beef after eating ours. We strive to produce feeder cattle that gain quickly, grade Prime or Choice and taste so good the customer comes back for more. The Rito bloodline has done that for us.

SALE GUESTS

BRUMFIELD ANGUS FARMS

Frank Brumfield
1238 W Montana St
Chicago, IL 60614
(312) 391-6116
fbrumfield@fsb-companies.com

GRABER'S ANGUS FARM

David Graber
9258 E 500 N
Montgomery, IN 47558
dgraber77@gmail.com
(812) 444-9293

LOST RIVER CATTLE COMPANY

Roger Robinson
1 E 500 N
Orleans, IN 47452
boilermaker@netsurfusa.net
(812) 797-1421

SCIOTO VALLEY ANGUS

Dean Knepp
35487 St Rt 683
McArthur, OH 45651
sciotovalleyangus@gmail.com
(812) 571-2415

SALE DAY PHONE:
(402) 569-3442

AUCTIONEER:



Matt Lowery
(308) 750-6119

SALE MANAGER:

American Angus Hall of Fame - (816) 532-0811



Tom Burke
(816) 853-2697



Kurt Schaff
(816) 520-6447



Jeremy Haag
(816) 516-1309

Buyers unable to attend the sale may send their bids to the Sale Manager, Regional Manager, Field Representatives or Auctioneer.

LIVESTOCK PUBLICATION REPRESENTATIVES:

Drew Feller, Angus Journal - (402) 841-4215
Galen Gerdes, Special Assignment - (308) 380-0302
Chris Beutler, Midwest Messenger - (402) 380-8244
Dallas Woltermath, Consultant - (308) 390-6400

SALE SITE:

SpringLake Angus Center
50475 887th Road
Lynch, NE 68746

AIR TRANSPORTATION: Private planes are served at landing strip in O'Neill, Nebraska. Commercial flights are available in Sioux City, Iowa; Omaha, Nebraska; and Sioux Falls, South Dakota.

ACCOMMODATIONS:

Lodging is available in nearby O'Neill, Nebraska.
Contact SpringLake for assistance.

TERMS AND CONDITIONS: Cattle will sell under the suggested Terms and Conditions of the American Angus Association (http://www.angus.org/Pub/suggested_sale_terms.pdf).

All bulls selling for \$2,500 or more will be covered 100% (less \$1500 for salvage value) if they are injured during their first breeding season and not able to return to service during that first breeding season. Breeding season is defined as the 90-day period following the first turnout of bulls. 100% of the value of the injured bull, minus the salvage value, will be given as credit in a future sale or towards a replacement bull, if one is available. All injured bulls must be diagnosed by a veterinarian. Please notify us as soon as possible should any injury occur and prior to the bull being sold for salvage. All claims must be made by September 1, 2020. SpringLake and partners retain 1/3 semen interest in all bulls selling, unless otherwise noted.

SUPPLEMENTAL INFORMATION: A supplemental sheet will be available sale day with complete and up-to-date information. Announcements from the auction block take precedence over sale book information. All registered lots are AM, NH, CA, M1, D2, DD, OH and OS free unless otherwise noted.

HERD HEALTH: All cattle will be accompanied by proper health certificates for immediate shipment.

TRUCKING: Truckers believed to be reliable will be available to assist you in shipping your purchases. All bulls purchased out-of-state require a Trich test prior to pickup or delivery. Free delivery in Nebraska and adjacent states or \$300 trucking credit per head outside of that area.

LIVESTOCK MORTALITY INSURANCE: To properly insure your investment, James Bessler will be available to assist you with mortality insurance. (815) 762-2641

SALE PREVIEW AND FOOD AND REFRESHMENTS: The cattle will be available to view at the sale site beginning Thursday afternoon.

Food and Refreshments will be available Thursday evening and Friday.

ONLINE BIDDING: Online bidding is available through DV Auction.

DVAuction
Broadcasting Real-Time Auctions

Visit the Angus Journal Web site, www.angus.org and view this sale book online. References: American Angus Association®, AHIR®, AngusSource®, CAB®, Pathfinder®. EPDs current as of March 7, 2020. Updated EPDs can be viewed online at www.angus.org. The American Angus Association does not generate nor endorse \$C numerical ranks (versus percentile rankings) until \$C numerical ranks are officially released.

SLA CARCASS STATS

If numbers are what you like to look at when deciding the future of your cattle business, then SpringLake Angus has some REAL (not scanned or adjusted) numbers for you.

SpringLake Angus sold 100 drug free, hormone free and all natural steers @ 530# to Jim Dinklage through Superior Livestock Auction in August 2013 with a 10/31/13 delivery date. The steers were taken off the cow and shipped to O'Neill Feeders in O'Neill, NE. They were fed a normal drug free, hormone free, all natural feed ration. Of the 100 steers, 97 stayed all natural, drug and hormone free and were sent to Creekstone in Kansas at 14-15 months of age where they were slaughtered June 26, 2014. Fifteen SpringLake Angus herd sires were represented and the steers ALL went 100% Prime or Choice. SpringLake Angus thinks this is the actual numbers that we should be striving for:

**SpringLake
Angus:**

100% Prime and Choice
23.7% Prime
76.3% Choice
0.0% Select

**National
Averages:**

51% Prime and Choice
49% Choice
49% Select

More SpringLake stats: Yield Grade Avg. 3.24, Back Fat Avg. 0.58, Ribeye Area Avg. 12.74, Standing Wt. Avg. 1245.74#, Hanging Carcass Wt. Avg. 791.25#, Dress % Avg. 64.00%.

There were no discounts for light or heavy carcasses. The top steer dressed prime and hung 72.15% and that is what SpringLake Angus and Friends are working towards. We are in the seedstock business and this is where we can make the biggest impact in the future of cattle for the registered or commercial cattleman. As the year progresses, please compare these numbers to other programs, promotions and the national average and we think the more you do, the more impressed you will become. As most cattle end up on the grid, do you think SpringLake Angus and Friends genetics could move you towards 100% Prime and Choice? The REAL numbers show it's working for us.

\$EN BREED AVERAGES:

Current Sires -5.50
Current Dams -3.14

Non-Parent Bulls -6.94
Non-Parent Cows -6.83

Many of the cattle in this sale have high ranked \$EN (\$Energy) values as compared to breed average.

Cow Energy Value (\$EN), expressed in dollars savings per cow per year, assesses differences in cow energy requirements as an expected dollar savings difference in daughters of sires. A larger value is more favorable when comparing two animals (more dollars saved on feed energy expenses). Components for computing the cow \$EN savings difference include lactation energy requirements and energy costs associated with differences in mature cow size.

The SLA sale cattle are bred for fertility, longevity/functionality (good feet and legs, calving ease and docility) and \$EN to perform on grass in low input environments. Their genetics provide an opportunity for breeders to once again emphasize these traits in their herds and improve returns on investment.

Note: DMI EPD is an expression of transmitting ability of dry matter intake.



RR Rito 707

Born more than 50 years ago, RR Rito 707 established himself as a common denominator in most performance bloodlines that continue to be prevalent in the Angus breed today. He dominated the 1968 PIC Bull Test at Stanford, Montana, as the top yearling weight and top gaining bull with a gain ratio of 129 and sold two-thirds interest for \$5,000 as the top-selling bull to the American Breeders Service and Pioneer Beef Cattle, in his very first progeny test group of 27 steers recorded a gain ratio of 111 and graded USDA Choice. He continues to compile impressive progeny weaning and yearling ratios of 105 along with productive daughters in production who post a collective progeny weaning ratio of 102. His influential sons include the Pathfinder Sires known as Rito 149, Rito 72 and F0203, as well as the great breeding bull Rito 707 of Ideal 3407 7075.



Rito 707 of Ideal 3407 7075

This dominating sire from the timeless Rito performance lineage has established himself as a true breed legend and a powerful breeding bull, perhaps unlike any other ever identified. Rito 7075 is fortified with a solid performance pedigree, tracing 39 times to the legendary Pathfinder Sire RR Rito 707, and 53 times to Rito N Bar, an original Certified Meat Sire. His progeny displays exceptional muscle density, masculinity, natural rib shape and overall dimension with fleshing ability, foot quality and enhanced breed character. This SpringLake featured sire has left a strong influence of daughters in the SpringLake program. His progeny and descendants have highlighted more than a decade of successful sales at Schaff Angus Valley, include his noted sons, SAV Resource 1441, SAV Renown 3439, SAV Recharge 3436, SAV Registry 2831, SAV 707 Rito 9969 and SAV Eliminator 9105.



SAV RESOURCE 1441



SAV RENOWN 3439



SAV SENSATION 5615



SAV CLASSIFIED 3427



SAV UNIVERSAL 4038

SPRINGLAKE REFERENCE SIRES



SAV RAINDANCE 6848



BALDRIDGE COLONEL C251



BASIN PAYWEIGHT 1682



COLEMAN CHARLO 0256



TEX PLAYBOOK 5347



HA COWBOY UP 5405



BROOKING BANK NOTE 4040



SPRING COVE RENO 4021



VAR LEGEND 5019



SAV CUTTING EDGE 4857



PA VALOR 201



TEHAMA TAHOE B767



SAV PIONEER 7301



PLATTEMERE WEIGH UP K360



JINDRA ACCLAIM

SPRINGLAKE REFERENCE SIRES



BUBS SOUTHERN CHARM AA31



CONNEALY CONFIDENCE PLUS



QUAKER HILL RAMPAGE 0A36



BR MIDLAND



CONNEALY CAPITALIST 028



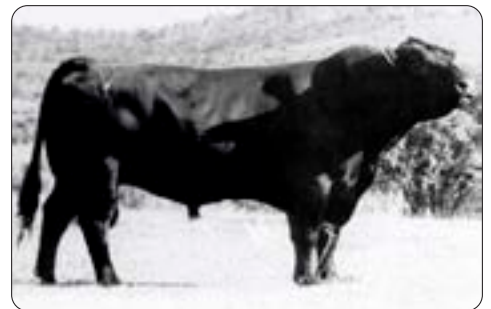
HOOVER NO DOUBT



RITO REVOLT W2



GEORGE OF SWIFTBROOK



SHOSHONE VIKING GD60



MARDA BLACKSMITH 683



GAFFNEY GAME CHANGER 371



HOLDER'S SPECIAL DUTY 3533



3F EPIC 4631



RB TOUR OF DUTY 177



RB ACTIVE DUTY 010

SPRINGLAKE AND GUESTS 3-YEAR-OLD BULLS



G A F ACTIVE DUTY 4-2918 - Lot 4



G A F TOUR OF DUTY 990 - Lot 5

4 G A F Active Duty 4-2918
 Birth Date: 1-25-2017 Bull +18920821 Tattoo: 2918

| | |
|------|--------|
| CW | I+35 |
| MB | I+.30 |
| \$W | I+.39 |
| RE | I+.001 |
| \$EN | FAT |
| -16 | I+.001 |

#*LCC New Standard
 RB Active Duty 010
 #+16718300 +*BA Lady 6807 305
 #DHD Traveler 6807
 GAF Forever Lady 2911-4
 +*18296319 +*Southern Forever Lady 2911

#Bon View New Design 1407
 LCC Sunset K3118
 #Vermilion Dateline 7078
 +GD Lady Hi Flyer 302
 #QAS Traveler 23-4
 #Bemindful Maid DHD 0807
 #Traveler 124 GDAR
 +SAF Forever Lady 6011

A three-year-old son of the now-deceased Pathfinder Sire RB Active Duty 010.

This bull is from the embryo program from a donor dam backed by the Forever Lady family and the Pathfinder Sires DHD Traveler 6807 and Traveler 124 GDAR.

| BE PD | WE PD | YE PD | MILK |
|-------|-------|-------|------|
| I+2.2 | I+55 | I+99 | I+22 |

6 G A F Rito 7075-7117
 Birth Date: 1-17-2017 Bull +18923531 Tattoo: 7117

| | |
|------|--------|
| CW | I+27 |
| MB | I-.02 |
| \$W | I+.51 |
| RE | I+.011 |
| \$EN | FAT |
| +0 | I+.011 |

#RR Rito 707
 Rito 707 of Ideal 3407 7075
 +13066860 Ideal 3407 of 1418 076
 #SAV Pioneer 7301
 GAF Lass 116
 +*18296290 *GAF Bushwacker Lass

Rito N Bar
 Eriskay of Rollin Rock 3
 #Ideal 1418 of 8103 4286
 Ideal 076 of 692 8375
 #*SAV Final Answer 0035
 SAV Blackbird 5297
 #BCC Bushwacker 41-93
 +WCC Lass H305

A three-year-old bull by the great breeding bull Rito 707 of Ideal 3407 7075.

The donor dam is backed by the Pathfinder Sires SAV Pioneer 7301 and BCC Bushwacker 41-93, backed by the herd sire producing Lass family.

| BE PD | WE PD | YE PD | MILK |
|-------|-------|-------|------|
| I+1.9 | I+48 | I+85 | I+19 |

5 G A F Tour of Duty 990 [DDF]
 Birth Date: 9-5-2016 Bull +*18903544 Tattoo: 9901

| | |
|------|-------|
| CW | +53 |
| MB | +1.00 |
| \$W | +79 |
| RE | +76 |
| \$EN | FAT |
| -44 | -.010 |

#*Werner War Party 2417
 RB Tour Of Duty 177
 #+16984170 +*BA Lady 6807 305
 #*LCC New Standard
 RB Lady Standard 308-990
 +*16400058 +*BA Lady 6807 308

#*Connealy Onward
 +BAAR USA Lady Jaye 489
 #Vermilion Dateline 7078
 +GD Lady Hi Flyer 302
 #Bon View New Design 1407
 LCC Sunset K3118
 #DHD Traveler 6807
 +GD Lady Hi Flyer 302

This three-year-old bull was produced

from a dam who combines a progeny birth ratio of 96 with a progeny weaning ratio of 109 on four natural calves and a progeny yearling ratio of 110 on one head.

This bull is sired by the one-time EPD record-breaker RB Tour of Duty 177 who led the breed for annual registrations.

This bull is linebred through the maternal sisters BA Lady 6807 308 and BA Lady 6807 305.

| BE PD | WE PD | YE PD | MILK |
|-------|-------|-------|------|
| +3.0 | +66 | +120 | +45 |

7 SVA Universal 016
 Birth Date: 2-22-2017 Bull *18805634 Tattoo: 016

| | |
|------|-------|
| CW | +33 |
| MB | +1.16 |
| \$W | +58 |
| RE | +69 |
| \$EN | FAT |
| -9 | -.025 |

#*SAV International 2020
 SAV Universal 4038
 +*17921462 *SAV Blackcap May 4136
 #SAV Pioneer 7301
 KF Pioneer's Sue
 17759547 Double O Eventress R33

#*SAV Harvester 0338
 #*SAV Emblynette 5483
 #SAV 8180 Traveler 004
 #*SAV May 2397
 #*SAV Final Answer 0035
 SAV Blackbird 5297
 #Bon View New Design 878
 Double O Eventress N7

A three-year-old son of the \$200,000 SAV Universal 4038.

The dam of this bull is sired by the \$65,000 Genex Pathfinder Sire SAV Pioneer 7301.

The grandam is by the ABS Global Pathfinder Sire Bon View New Design 878 who twice led the breed for annual registrations.

| BE PD | WE PD | YE PD | MILK |
|-------|-------|-------|------|
| +3.1 | +58 | +101 | +26 |

SPRINGLAKE AND GUESTS 2-YEAR-OLD BULLS



BAF-GAF PAYWEIGHT 8693 - Lot 8



SAV BLACKCAP MAY 1234 - Dam of Lots 8-9, 32-33, 43, 64 and 95.

8 BAF-GAF Payweight 8693

| | | |
|---|---------------------------|------------|
| Birth Date: 3-12-2018 Bull +19374495 Tattoo: 8693 | | CW |
| #*Basin Payweight 006S | | I+58 |
| Basin Payweight 1682 | | MB |
| #*17038724 21AR O Lass 7017 | | I+.31 |
| #SAV Net Worth 4200 | #Vermilion Payweight J847 | \$W |
| SAV Blackcap May 1234 | +Basin Lucy 3829 | RE |
| *16928558 *SAV Blackcap May 4136 | #HARB Pendleton 765 JH | +76 I+.50 |
| | 21AR O Lass F24A | \$EN FAT |
| | #SAV 8180 Traveler 004 | -16 I+.040 |
| | +SAV May 2410 | |
| | #SAV 8180 Traveler 004 | |
| | #*SAV May 2397 | |

The first of two flush brothers produced in the embryo program by the popular Pathfinder Sire Basin Payweight 1682.

The donor dam is the second top-selling cow of the 2019 Graber Sale and she is the result of mating the \$117,500 Pathfinder Sire SAV Net Worth 4200 with the all-time world record income-producing cow SAV Blackcap May 4136.

| BE PD | WE PD | YE PD | MILK |
|-------|-------|-------|------|
| I+3.0 | I+70 | I+121 | I+29 |

9 BAF-GAF Payweight 8764

| | | |
|---|---------------------------|------------|
| Birth Date: 3-12-2018 Bull +19374494 Tattoo: 8764 | | CW |
| #*Basin Payweight 006S | | I+58 |
| Basin Payweight 1682 | | MB |
| #*17038724 21AR O Lass 7017 | | I+.31 |
| #SAV Net Worth 4200 | #Vermilion Payweight J847 | \$W |
| SAV Blackcap May 1234 | +Basin Lucy 3829 | RE |
| *16928558 *SAV Blackcap May 4136 | #HARB Pendleton 765 JH | +76 I+.50 |
| | 21AR O Lass F24A | \$EN FAT |
| | #SAV 8180 Traveler 004 | -16 I+.040 |
| | +SAV May 2410 | |
| | #SAV 8180 Traveler 004 | |
| | #*SAV May 2397 | |

This flush brother to the previous bull is from the mating of Basin Payweight 1682 with SAV Blackcap May 1234. The granddam has generated more than \$10 million in progeny sales-to-date including a long line of prominent sons and daughters.

| BE PD | WE PD | YE PD | MILK |
|-------|-------|-------|------|
| I+3.0 | I+70 | I+121 | I+29 |

10 LRCC 441 Resource F20

| | | |
|--|------------------------|------------|
| Birth Date: 1-24-2018 Bull +19583165 Tattoo: F20 | | CW |
| +Rito 707 of Ideal 3407 7075 | | I+44 |
| SAV Resource 1441 | | MB |
| #*17016597 *SAV Blackcap May 4136 | | I-.06 |
| #*Coleman Juneau 044 | #RR Rito 707 | \$W |
| Coleman Donna 441 | Ideal 3407 of 1418 076 | RE |
| *17864502 *Coleman Donna 183 | #SAV 8180 Traveler 004 | +60 I+.74 |
| | #*SAV May 2397 | \$EN FAT |
| | #*OCC Juneau 807J | -13 I+.025 |
| | +*Coleman Donna 714 | |
| | N Bar Shadow X4124 | |
| | +KMK Donna J311 | |

| BE PD | WE PD | YE PD | MILK | BW | 205 |
|-------|-------|-------|------|----|-----|
| I+2.2 | I+63 | I+112 | I+21 | 88 | N/A |

First of two flush brothers produced in the embryo program by the Genex Pathfinder Sire SAV Resource 1441.

The donor dam is the result of mating the Pathfinder Sire Coleman Juneau 044 with the noted donor Coleman Donna 183.

11 LRCC 441RESOURCE F21

| | | |
|--|------------------------|------------|
| Birth Date: 1-24-2018 Bull +19583166 Tattoo: F21 | | CW |
| +Rito 707 of Ideal 3407 7075 | | I+44 |
| SAV Resource 1441 | | MB |
| #*17016597 *SAV Blackcap May 4136 | | I-.06 |
| #*Coleman Juneau 044 | #RR Rito 707 | \$W |
| Coleman Donna 441 | Ideal 3407 of 1418 076 | RE |
| *17864502 *Coleman Donna 183 | #SAV 8180 Traveler 004 | +60 I+.74 |
| | #*SAV May 2397 | \$EN FAT |
| | #*OCC Juneau 807J | -13 I+.025 |
| | +*Coleman Donna 714 | |
| | N Bar Shadow X4124 | |
| | +KMK Donna J311 | |

| BE PD | WE PD | YE PD | MILK | BW | 205 |
|-------|-------|-------|------|----|-----|
| I+2.2 | I+63 | I+112 | I+21 | 69 | N/A |

This flush brother to the previous bull is by the now-deceased Genex Pathfinder Sire SAV Resource 1441 from a donor dam who is double-bred to the Donna family.

The dam is also the granddaughter of the Pathfinder Sires OCC Juneau 807J and N Bar Shadow X4124.

SPRINGLAKE AND GUESTS 2-YEAR-OLD ANGUS BULLS



CHAMPION HILL GEORGINA 6240 - Grandam of Lots 12, 67, 68 and 69.

12 SVA Classified 024

| | | |
|---|------------------------------|------|
| Birth Date: 1-13-2018 Bull +*19114572 Tattoo: 024 | | CW |
| *SAV First Class 0207 | #SAV Net Worth 4200 | +57 |
| SAV Classified 3427 | #SAV Duke Girl 7348 | MB |
| +*17635321 *SAV Blackcap May 4136 | #SAV 8180 Traveler 004 | +17 |
| | #SAV May 2397 | \$W |
| | #SAV Net Worth 4200 | RE |
| *SAV Momentum 9274 | +SAV Emblynette 3301 | +56 |
| Champion Hill Georgina 8455 | #SAV Mandan 5664 | +52 |
| +*17689603 +Champion Hill Georgina 6240 | +CHAMPION HILL Georgina 3842 | \$EN |
| | | FAT |
| | | -19 |
| | | +025 |

This bull from the embryo program is sired by SAV Classified 3427 from Champion Hill Georgina 8455 who is backed by the noted sires SAV Momentum 9274 and SAV Mandan 5664.

The grandam is a successful champion stemming from the National Western Grand Champion Female Champion Hill Georgina 3842.

13 SVA Classified 042

| | | |
|--|------------------------|------|
| Birth Date: 3-13-2018 Bull *19114597 Tattoo: 042 | | CW |
| *SAV First Class 0207 | #SAV Net Worth 4200 | +43 |
| SAV Classified 3427 | #SAV Duke Girl 7348 | MB |
| +*17635321 *SAV Blackcap May 4136 | #SAV 8180 Traveler 004 | +05 |
| | #SAV May 2397 | \$W |
| | #SAV 8180 Traveler 004 | RE |
| #SAV 004 Predominant 4438 | SAV Emblynette 1182 | +64 |
| Champion Hill Juanada 8273 | *N Bar Emulation EXT | +24 |
| +*17293925 OCC Juanada 775C | OCC Juanada 709V | \$EN |
| | | FAT |
| | | -2 |
| | | +008 |

This son of SAV Classified 3427

was produced from a donor dam who is a product of the historic Champion Hill program by the Accelerated Genetics Pathfinder Sire SAV 004 Predominant 4438.

The grandam is the famous OCC Juanada 775C who was the top-selling cow of a past OCC sale.



OCC JUANADA 775C - Grandam of Lot 13.

14 SVA Pioneer 035

| | | |
|---|--------------------------|------|
| Birth Date: 2-18-2018 Bull +*19114571 Tattoo: 035 | | CW |
| *SAV Final Answer 0035 | #Sitz Traveler 8180 | +34 |
| SAV Pioneer 7301 | SAV Emulous 8145 | MB |
| #15688392 SAV Blackbird 5297 | #+Boyd New Day 8005 | -12 |
| | SAV Blackbird 1082 | \$W |
| | #+*GAR Grid Maker | RE |
| #SAV Bismarck 5682 | SAV Abigale 0451 | +53 |
| Champion Hill Cheyenne 8316 | #SAV Free Spirit 8164 | \$EN |
| +*17404691 +Champion Hill Cheyenne 7785 | +Craft Cheyenne 1397-581 | FAT |
| | | -6 |
| | | -018 |

This two-year-old bull is backed by the Genex

Pathfinder Sires SAV Pioneer 7301 and SAV Bismarck 5682.

The donor dam is backed by generations of females from the championship producing Cheyenne family.

15 LRCC 1010 Rampage F22

| | | |
|---|---------------------------|--------|
| Birth Date: 3-3-2018 Bull +19586148 Tattoo: F22 | | CW |
| #MCC Daybreak | #+Boyd New Day 8005 | I+40 |
| Quaker Hill Rampage 0A36 | #MCC Miss Focus 134 | MB |
| +*16925771 +*QHF Blackcap 6E2 of 4V16 4355 | Ideal 4355 of 0T26 2440 | I+27 |
| | *QHF Blackcap 4V16 of 1H8 | \$W |
| | Rito N Bar | RE |
| #RR Rito 707 | Eriskay of Rollin Rock 3 | +49 |
| SLA Madame Pride 1010 | #SAV 8180 Traveler 004 | \$EN |
| +17338758 +SAV Madame Pride 4312 | SAV Madame Pride 8264 | FAT |
| | | -3 |
| | | I-.023 |

A son of the one-time EPD record-breaker Quaker Hill Rampage 0A36 who led the breed for annual registrations.

The donor dam is the Lot 1 cow of the 2017 SpringLake Sale from the mating of the legendary performance sire RR Rito 707 with the \$40,000 SAV Madame Pride 4312.

16 LRCC Midland 902

| | | |
|---|---------------------------|--------|
| Birth Date: 2-27-2018 Bull +19376028 Tattoo: F1 | | CW |
| #Twin Valley Precision E161 | #GAR Precision 1680 | I+22 |
| BR Midland | +WCC Blackcap C9 | MB |
| #13898124 BR Royal Lass 7036-19 | #SAF Neutron | I+39 |
| | #SAF Royal Lass 7036 | \$W |
| | #Connealy Dateline | RE |
| #Connealy Frontline | #Pleasant Pill of Conanga | +29 |
| Leachman TR Blackcap 340 | #Leachman Express | \$EN |
| +14474476 Leachman Blackcap 1079 | Leachman Blackcap 9006 | FAT |
| | | +6 |
| | | I+.023 |

A two-year-old son of the \$202,000 Midland Bull Test all-time record-seller BR Midland.

This bull is from the famous Leachman Blackcap family, produced from a donor dam by the Pathfinder Sire Connealy Frontline.

17 SLA Shoshone Viking 8023

| | | |
|--|--------------------------|--------|
| Birth Date: 3-1-2018 Bull +19364066 Tattoo: 8023 | | CW |
| #Franchester of Wye | #Conan of Wye | I+4 |
| Shoshone Viking GD60 (RTF) | Friona of Wye | MB |
| #8805991 Shoshone Wendy D60 | #Schebrook Shoshone | I+30 |
| | CAR Chancellor 3548 | \$W |
| | Rito N Bar | RE |
| #RR Rito 707 | Eriskay of Rollin Rock 3 | +15 |
| SLA GAF Barbara 707 2024 | #Sitz Alliance 6595 | \$EN |
| +*17454608 BZ Miss Sitz Wacker 46 | SAF Miss Bushwacker 40B2 | FAT |
| | | +20 |
| | | I+.029 |

A two-year-old son of the Pathfinder Sire Shoshone Viking GD60 who is the \$50,000 one-time Midland Bull Test record-seller.

This maternal brother to Lots 2 and 3 is from a donor dam by the legendary performance sire RR Rito 707.

SPRINGLAKE AND GUESTS 2-YEAR-OLD BULLS



SLA ACTIVE DUTY 3625 8011 - Lot 18



IDEAL 3625 OF 878 1356 - Pathfinder
Dam of Lot 18 and grandam of Lot 57.

18 SLA Active Duty 3625 8011

| | | | | | | | |
|--------------------------|------|---------------------------|------|--------------------------|-----|--------|--|
| Birth Date: 2-26-2018 | | Bull +19381714 | | Tattoo: 8011 | | CW | |
| #*LCC New Standard | | #Bon View New Design 1407 | | LCC Sunset K3118 | | I+42 | |
| RB Active Duty 010 | | #Vermilion Dateline 7078 | | +GD Lady Hi Flyer 302 | | MB | |
| #*16718300 | | +*BA Lady 6807 305 | | #B/R New Design 036 | | I+.19 | |
| #Bon View New Design 878 | | Bon View Gammer 85 | | Ideal 6442 of 8103 351 | | \$W | |
| Ideal 3625 of 878 1356 | | +Ideal 1356 of 6442 4465 | | +Ideal 4465 of 6807 4286 | | RE | |
| #14578537 | | | | | | +52 | |
| | | | | | | I+.40 | |
| | | | | | | \$EN | |
| | | | | | | -21 | |
| | | | | | | FAT | |
| | | | | | | I+.022 | |
| BEPD | WEPD | YEPD | MILK | BW | 205 | | |
| +1.3 | +56 | +105 | +24 | 76 | 522 | | |

This two-year-old son of the now-deceased RB Active Duty 010 has an individual birth ratio of 94 combined with an individual weaning ratio of 102.

The Pathfinder Dam records progeny weaning and yearling ratios of 107 on five natural calves and a progeny ribeye ratio of 106 on 13 head and she traces to the feed-efficiency matriarch Ideal 4465 of 6807 4286.

20 SLA Rito Revolt W2 809

| | | | | | | | |
|----------------------------|------|------------------------------|------|------------------------------|-----|-------|--|
| Birth Date: 2-26-2018 | | Bull +19372398 | | Tattoo: 809 | | CW | |
| #RR Rito 707 | | Rito N Bar | | Eriskey of Rollin Rock 3 | | I+13 | |
| Rito Revolt W2 | | Ideal 8103 of Eldo 5110 5213 | | Ideal 7394 Super X 5189 5275 | | MB | |
| #13203938 | | Ideal 089 of 8103 7394 | | #*N Bar Emulation EXT | | I+.05 | |
| #Leachman Right Time | | Leachman Erica 0025 | | #DHD Traveler 6807 | | \$W | |
| FairView Lady Traveler X85 | | BCC Lady Traveler 13B 93 | | Concar Sarah 8078 | | RE | |
| #16965812 | | | | | | +33 | |
| | | | | | | I+.16 | |
| | | | | | | \$EN | |
| | | | | | | +12 | |
| | | | | | | FAT | |
| | | | | | | I+0 | |
| BEPD | WEPD | YEPD | MILK | BW | 205 | | |
| +2.0 | +35 | +57 | +22 | 84 | 474 | | |

This two-year-old son of Rito Revolt W2 was produced in the embryo program at Fairview Ranch in Montana where his dam served as a valuable donor and recorded a progeny weaning ratio of 105 on two natural calves.

Seven maternal sisters post a collective progeny weaning ratio of 104.

19 SLA Rito Revolt 802 8048

| | | | | | | | |
|-----------------------|------|------------------------------|------|------------------------------|--|--------|--|
| Birth Date: 3-10-2018 | | Bull +*19325964 | | Tattoo: 8048 | | CW | |
| #RR Rito 707 | | Rito N Bar | | Eriskey of Rollin Rock 3 | | I+16 | |
| Rito Revolt W2 | | Ideal 8103 of Eldo 5110 5213 | | Ideal 7394 Super X 5189 5275 | | MB | |
| #13203938 | | Ideal 089 of 8103 7394 | | #SAF Focus of ER | | I+.25 | |
| #*Mytty In Focus | | Mytty Countess 906 | | #DHD Traveler 6807 | | \$W | |
| RB Lady Focus 303-827 | | +GD Lady Hi Flyer 302 | | | | +39 | |
| #16130656 | | | | | | I+.13 | |
| | | | | | | \$EN | |
| | | | | | | +2 | |
| | | | | | | FAT | |
| | | | | | | I+.010 | |
| BEPD | WEPD | YEPD | MILK | | | | |
| I+1.5 | I+40 | I+69 | I+22 | | | | |

A two-year-old son of Rito Revolt W2 from the Lady Prideva family.

The donor dam is a flush sister to the dam of the ABS Global sire RB Resolute 1844.



SLA RITO REVOLT 802 8048 - Lot 19

SPRINGLAKE AND GUESTS 2-YEAR-OLD BULLS



SLA RR RITO 6014 8107 - Lot 21

21 **SLA RR Rito 6014 8107**
 Birth Date: 3-30-2018 Bull 19361610 Tattoo: 8107

| | |
|-----|--------|
| CW | I+21 |
| MB | I+.11 |
| RE | I+.07 |
| FAT | I+.021 |

| | |
|------|-----|
| \$W | +35 |
| \$EN | -1 |

| | | | | | |
|------|------|------|------|----|-----|
| BEPD | WEPD | YEPD | MILK | BW | 205 |
| +3.5 | +45 | +78 | +23 | 89 | 474 |

#RR Rito 707
 SLA RR Rito 707 6014
 +*18512528 #Ideal 3625 of 878 1356
 +*SLA Twister 602 508
 SLA Tahlia 71 771 508 9152
 17012363 +SLA Tahlia 71 771 605

Rito N Bar
 Eriskay of Rollin Rock 3
 #Bon View New Design 878
 +Ideal 1356 of 6442 4465
 #Da Es Ro Twister 0627
 +Rito 707 of Ideal 3407 602
 #GDAR Traveler 71
 +Rito 707 of Ideal 089 7071

A high-indexing two-year-old bull with an individual weaning ratio of 112.

The dam of this bull records a progeny weaning ratio of 116 on seven calves, tracing to a full sister to Rito Revolt W2.

22 **SLA Rito 707 6014 885**
 Birth Date: 3-26-2018 Bull 19364068 Tattoo: 885

| | |
|-----|-----|
| CW | N/A |
| MB | N/A |
| RE | N/A |
| FAT | N/A |

| | |
|------|-----|
| \$W | +23 |
| \$EN | +14 |

| | | | | | |
|------|------|------|------|----|-----|
| BEPD | WEPD | YEPD | MILK | BW | 205 |
| +2.8 | +35 | +60 | +19 | 86 | 514 |

#RR Rito 707
 SLA RR Rito 707 6014
 +*18512528 #Ideal 3625 of 878 1356
 SLA Emblazon 301 523 720
 SLA Mulben Pride 720 48
 18601248 SLA Mulben Pride 515

Rito N Bar
 Eriskay of Rollin Rock 3
 #Bon View New Design 878
 +Ideal 1356 of 6442 4465
 SLA 775 Emblazon 103 301
 SLA Lisa Rito O 062 033 523
 #OCC Anchor 771A
 SL Ru 428 R 807

This two-year-old grandson of RR Rito 707 records an individual weaning ratio of 105.

The dam has a progeny birth ratio of 96 combined with a progeny weaning ratio of 113 on three calves.

23 **SLA Rito 707 205 888**
 Birth Date: 3-26-2018 Bull 19364065 Tattoo: 888

| | |
|-----|-----|
| CW | N/A |
| MB | N/A |
| RE | N/A |
| FAT | N/A |

| | |
|------|-----|
| \$W | +23 |
| \$EN | +14 |

| | | | | | |
|------|------|------|------|----|-----|
| BEPD | WEPD | YEPD | MILK | BW | 205 |
| +2.4 | +34 | +56 | +18 | 80 | N/A |

#RR Rito 707
 SLA BG Rito 707
 +*17427713 +*Sinclair Lady 5E73 4465
 +SLA Retro 7012 of 9805 771
 SLA Blackwood Lady 930
 16601213 SLA Promptress B 815 16 555

Rito N Bar
 Eriskay of Rollin Rock 3
 #N Bar Explosion TNT
 +Ideal 4465 of 6807 4286
 #Papa Durabull 9805
 +Rito 707 of Ideal 089 7071
 SLA Harley 88R 775 106
 SL PPD 82R B 815

A grandson of RR Rito 707 sired by SLA BG Rito 707. The dam has a progeny weaning ratio of 115 on one calf.

24 **Fisher Rito Ideal 5010 F89**
 Birth Date: 3-15-2018 Bull 19361611 Tattoo: F89

| | |
|-----|-----|
| CW | N/A |
| MB | N/A |
| RE | N/A |
| FAT | N/A |

| | |
|------|-----|
| \$W | +28 |
| \$EN | +5 |

| | | | | | |
|------|------|------|------|----|-----|
| BEPD | WEPD | YEPD | MILK | BW | 205 |
| +3.8 | +43 | +75 | +20 | 90 | N/A |

+Rito 707 of Ideal 3407 7075
 SLA Rito of Ideal 5010
 +*18252216 SLA Texas Rose 7105 Tex 1128
 +*SLA Twister 602 508
 Fisher Jillian F601 F95
 19324877 Fisher Jillian 005 F42 F601

#RR Rito 707
 Ideal 3407 of 1418 076
 DCC Ideal 277 of 2172 0216
 SL Morticia 2
 #Da Es Ro Twister 0627
 +Rito 707 of Ideal 3407 602
 Connealy Mayor 898
 Fisher Jillian 005 K21 F42

This grandson of Rito 707 of Ideal 3407 7075 is backed by generations of SpringLake breeding. The dam is sired by a son of Da Es Ro Twister 0627.

25 **Fisher Jetliner 22B F83** [OHP]
 Birth Date: 3-5-2018 Bull 19324878 Tattoo: F83

| | |
|-----|-----|
| CW | N/A |
| MB | N/A |
| RE | N/A |
| FAT | N/A |

| | |
|------|-----|
| \$W | +13 |
| \$EN | +15 |

| | | | | | |
|------|------|------|------|----|-----|
| BEPD | WEPD | YEPD | MILK | BW | 205 |
| +1.9 | +26 | +52 | +18 | 82 | N/A |

+*SLA Jetliner 707 602 608
 SLA Jetliner 22B
 +18776048 +SH Lady 2P61 6051
 SLA C PR 7118 911 418
 Fisher Lady 0010 418 F97
 18022948 +SLA Evelyn D806 4452 0010

#Jetliner 707 of Conanga
 +Rito 707 of Ideal 3407 602
 #+*Rito 111 of 2536 Rito 616
 +Sinclair Lady 2P61 4465
 +Springlake Realm 809 1466
 SL C Prompter Cinderella
 #*N Bar Prime Time D806
 +Ideal 4452 of 6807 5103

A descendent of the famous Pathfinder Sire Jetliner 707 of Conanga. This bull stems from Jorgensen cows in multiple lines of his pedigree.

26 **B A F Complete 418**
 Birth Date: 3-26-2018 Bull 19389442 Tattoo: 418

| | |
|-----|-----|
| CW | N/A |
| MB | N/A |
| RE | N/A |
| FAT | N/A |

| | |
|------|-----|
| \$W | +49 |
| \$EN | -6 |

| | | | |
|------|------|------|------|
| BEPD | WEPD | YEPD | MILK |
| I+.9 | I+40 | I+73 | I+34 |

WTR 837 Hoosier WarParty 215
 SCF War Party M43M
 17881727 Tuckers Lady Blackbird 612
 #*Summitcrest Complete 1P55
 GAR Complete 3271
 +17057037 +GAR Predestined 438
 +GAR Yield Grade 2254

#*Werner War Party 2417
 +WTR 903 Miss Traveler 837
 SydGen Mandate 8128
 TFF Lady Blackbird 107
 #CF Right Design 1802
 Summitcrest Elba 1M17
 #*GAR Predestined
 +GAR Yield Grade 2254

A descendent of the Select Sires bull Werner War Party 2417. The dam was produced in the GAR embryo program and she has a progeny weaning ratio of 99 on two calves.

27 **B A F Beth 518**
 Birth Date: 4-5-2018 Bull 19389441 Tattoo: 518

| | |
|-----|-----|
| CW | N/A |
| MB | N/A |
| RE | N/A |
| FAT | N/A |

| | |
|------|-----|
| \$W | +43 |
| \$EN | -3 |

| | | | |
|-------|------|------|------|
| BEPD | WEPD | YEPD | MILK |
| I+2.0 | I+42 | I+75 | I+28 |

WTR 837 Hoosier WarParty 215
 SCF War Party M43M
 17881727 Tuckers Lady Blackbird 612
 +GAR 5050 New Design 5529
 SCF G Beth T500
 17945925 Graham Beth 16

#*Werner War Party 2417
 +WTR 903 Miss Traveler 837
 SydGen Mandate 8128
 TFF Lady Blackbird 107
 #+GAR New Design 5050
 +GAR Objective 407
 Fintry of Graham 32786
 Graham Maid H38

Another descendent of the Select Sires bull Werner War Party 2417. This bull stems from a maternal grandam produced in the Graham herd in Georgia.

SPRINGLAKE AND GUESTS FALL YEARLING BULLS



SVA CHARLO 052 - Lot 28



SVA CHARLO 053 - Lot 29



SVA Charlo 052

Birth Date: 9-9-2018 Bull 19387203 Tattoo: 052

#*OCC Paxton 730P
Coleman Charlo 0256
#*16879074 +Bohi Abigale 6014
+*SAV Classified 3427
Champion Hill Blackbird 9044
#*18496432 *SAV Blackbird 5296

+OCC Focus 813F
OCC Blackbird 736K
#Sitz Traveler 8180
SAV Abigale 6062
*SAV First Class 0207
*SAV Blackcap May 4136
#*Boyd New Day 8005
SAV Blackbird 1082

| | |
|------|--------|
| CW | I+37 |
| MB | I+27 |
| \$W | RE |
| +67 | I+.70 |
| \$EN | FAT |
| +1 | I+.012 |

| | | | |
|-------|------|------|------|
| BEPD | WEPD | YEPD | MILK |
| I+2.0 | I+56 | I+97 | I+29 |

A royally-bred herd sire prospect by the Accelerated Genetics Pathfinder Sire Coleman Charlo 0256. The dam was produced in the embryo program of the historic Champion Hill herd and she is the result of mating SAV Classified 3427 with the Champion Hill foundation donor SAV Blackbird 5296 who produced an impressive array of champions and top-sellers.



SVA Raindance 055

Birth Date: 10-4-2018 Bull 19390182 Tattoo: 055

#*Coleman Charlo 0256
SAV Raindance 6848
#*18578965 *SAV Blackcap May 4136
+*SAV Recharge 3436
SVA Georgina 009
#*18673383 +Champion Hill Georgina 7786

#*OCC Paxton 730P
+Bohi Abigale 6014
#SAV 8180 Traveler 004
#*SAV May 2397
+Rito 707 of Ideal 3407 7075
*SAV Blackcap May 4136
SAV Birthstone 8258
+CHAMPION HILL Georgina 2175

| | |
|------|--------|
| CW | I+44 |
| MB | I-.04 |
| \$W | RE |
| +60 | I+.76 |
| \$EN | FAT |
| -17 | I-.014 |

| | | | |
|-------|------|-------|------|
| BEPD | WEPD | YEPD | MILK |
| I+1.5 | I+60 | I+113 | I+24 |

This son of the popular ST Genetics sire SAV Raindance 6848 from a dam by the Select Sires bull SAV Recharge 3436, making this bull linebred to SAV Blackcap May 4136. The dam of this bull is a maternal sister to Lot 29.



SVA Charlo 053

Birth Date: 9-14-2018 Bull 19387204 Tattoo: 053

#*OCC Paxton 730P
Coleman Charlo 0256
#*16879074 +Bohi Abigale 6014
SAV Birthstone 8258
Champion Hill Georgina 7786
#16795830 +CHAMPION HILL Georgina 2175

+OCC Focus 813F
OCC Blackbird 736K
#Sitz Traveler 8180
SAV Abigale 6062
#*SAV Bismarck 5682
+SAV Emblynette 4408
+Champion Hill Tecumseh
LLA Georgina 419

| | |
|------|--------|
| CW | I+20 |
| MB | I+.39 |
| \$W | RE |
| +55 | I+.48 |
| \$EN | FAT |
| +11 | I+.039 |

| | | | |
|------|------|------|------|
| BEPD | WEPD | YEPD | MILK |
| I+.5 | I+46 | I+83 | I+24 |

This son of the Accelerated Genetics Pathfinder Sire Coleman Charlo 0256 traces to the legendary LLA Georgina 419. The dam records a progeny birth ratio of 96 combined with a progeny weaning ratio of 101 and she was produced in the embryo program at Champion Hill.



SVA Universal 051

Birth Date: 9-7-2018 Bull +19391098 Tattoo: 051

#*SAV International 2020
SAV Universal 4038
#*17921462 *SAV Blackcap May 4136
#*SAV Bismarck 5682
Champion Hill Cheyenne 8316
#*17404691 +Champion Hill Cheyenne 7785

#*SAV Harvester 0338
#*SAV Emblynette 5483
#SAV 8180 Traveler 004
#*SAV May 2397
#*SAV Grid Maker
SAV Abigale 0451
#SAV Free Spirit 8164
+Craft Cheyenne 1397-581

| | |
|------|--------|
| CW | I+41 |
| MB | I-.08 |
| \$W | RE |
| +56 | I+.94 |
| \$EN | FAT |
| -17 | I-.027 |

| | | | |
|-------|------|-------|------|
| BEPD | WEPD | YEPD | MILK |
| I+3.7 | I+64 | I+109 | I+21 |

A son of the proven performance sire SAV Universal 4038 from a donor dam produced at Champion Hill by the Genex Pathfinder Sire SAV Bismarck 5682. This bull is from a family that has produced numerous champions.

SPRINGLAKE AND GUESTS FALL YEARLING BULLS



G A F BLACKSMITH 5152-8152 - Lot 34

34 G A F Blacksmith 5152-8152

Birth Date: 10-8-2018 Bull # 19674514 Tattoo: 8152

| | | | |
|----------------------------------|--|----------------------------|------|
| #*Connealy Black Granite | | #*Connealy Consensus 7229 | CW |
| Marda Blacksmith 683 | | #Eura Elga of Conanga 9109 | +45 |
| *18460820 *SAV Blackcap May 3092 | | #*AAR Ten X 7008 SA | MB |
| | | *SAV Blackcap May 1443 | +45 |
| | | #*SAV Harvester 0338 | \$W |
| | | *SAV International 2020 | +69 |
| | | #*SAV Emblynette 5483 | RE |
| | | #*SAV Net Worth 4200 | +77 |
| | | SAV Elba 1094 | \$EN |
| | | | FAT |
| | | | -20 |
| | | | +009 |

A product of the Elba family sired by the top-selling bull of a National Western Angus Sale. The dam is the result of mating SAV International 2020 with a daughter of the famous SAV Elba 1094.

| BE PD | WE PD | YE PD | MILK |
|-------|-------|-------|------|
| +3.6 | +70 | +114 | +25 |

32 G A F Cutting Edge 1234-16

Birth Date: 12-16-2018 Bull # 19666160 Tattoo: 16

| | | | |
|----------------------------------|--|------------------------|------|
| #*SAV Harvester 0338 | | #*SAV Heritage 6295 | CW |
| SAV Cutting Edge 4857 | | *SAV Emblynette 7749 | +55 |
| *17923290 #SAV Blackcap May 5530 | | #BCC Bushwacker 41-93 | MB |
| | | SAV May 7238 | +37 |
| | | #SAV 8180 Traveler 004 | \$W |
| | | *SAV Net Worth 4200 | +54 |
| | | *SAV May 2410 | RE |
| | | #SAV 8180 Traveler 004 | +38 |
| | | *SAV Blackcap May 4136 | \$EN |
| | | #SAV May 2397 | FAT |
| | | | -28 |
| | | | +035 |

A December bull produced in the embryo program by the powerful performance sire SAV Cutting Edge 4857.

This bull is triple-bred to the Blackcap May family from the featured donor SAV Blackcap May 1234 who was the second top-selling cow of the 2019 Graber Sale and daughter of the world record income-producing cow SAV Blackcap May 4136.

| BE PD | WE PD | YE PD | MILK |
|-------|-------|-------|------|
| +7.4 | +68 | +122 | +31 |

35 G A F Cowboy Up 43-843

Birth Date: 7-18-2018 Bull 19373571 Tattoo: 843

| | | | |
|-----------------------------------|--|--------------------------|------|
| *HA Outside 3008 | | #*KG Solution 0018 | CW |
| HA Cowboy Up 5405 | | #*HA Ever Lady 1575 | +45 |
| *18286467 #*HA Blackcap Lady 1602 | | #Sitz Upward 307R | MB |
| | | HA Blackcap Lady 5515 | +26 |
| | | #*Connealy Onward | \$W |
| | | Sitz Henrietta Pride 81M | +49 |
| | | #SAV Net Worth 4200 | RE |
| | | VDAR Miss Wix 1107 | +62 |
| | | | \$EN |
| | | | FAT |
| | | | -23 |
| | | | -026 |

| BE PD | WE PD | YE PD | MILK | BW | 205 |
|-------|-------|-------|------|-----|-----|
| +2.3 | +64 | +118 | +18 | N/A | 676 |

A son of the \$350,000 HA Cowboy Up 5405 from the time-tested Miss Wix family.

The dam is backed by the Pathfinder Sires Sitz Upward 307R and SAV Net Worth 4200.

33 Sutherland's Proclaim 1234

Birth Date: 9-15-2018 Bull # 19411166 Tattoo: 1234

| | | | |
|--|--|---------------------------|------|
| *Jindra 3rd Dimension | | #*Jindra Double Vision | CW |
| Jindra Acclaim | | Jindras Sapphire J 417 | +72 |
| *17972810 +Jindra Blackbird Lassy 1111 | | #*Connealy Impression | MB |
| | | Jindras Enchantress J 102 | +37 |
| | | #SAV 8180 Traveler 004 | \$W |
| | | *SAV May 2410 | +64 |
| | | #SAV 8180 Traveler 004 | RE |
| | | *SAV Blackcap May 4136 | +68 |
| | | #SAV May 2397 | \$EN |
| | | | FAT |
| | | | -43 |
| | | | +0 |

A fall yearling bull by the widely used Jindra Acclaim produced from the Graber foundation donor SAV Blackcap May 1234.

The record income-producing maternal grandam is the dam of a long line of prominent sons and top-selling daughters.

| BE PD | WE PD | YE PD | MILK | BW | 205 |
|-------|-------|-------|------|-----|-----|
| +3.4 | +75 | +140 | +24 | N/A | 650 |

36 LRCC Playbook 222L

Birth Date: 8-21-2018 Bull 19642000 Tattoo: F30

| | | | |
|---------------------------------------|--|------------------------------|------|
| *Basin Payweight 1682 | | #*Basin Payweight 006S | CW |
| TEX Playbook 5437 | | 21AR O Lass 7017 | N/A |
| *18414912 *Rita 1C43 of 9M26 Complete | | #*Summitcrest Complete 1P55 | MB |
| | | *Rita 9M26 of Rita 5F56 Pred | N/A |
| | | #*SS Objective T510 0T26 | \$W |
| | | *Rita 3540 of 021 Rito 111 | +68 |
| | | #Gardens Expedition | RE |
| | | Basin Lucy 5278 | \$EN |
| | | | FAT |
| | | | +0 |
| | | | N/A |

A son of the popular Select Sires bull Tex Playbook 5437.

This bull stems from a Pathfinder grandam and traces to the \$90,000 valued Basin Lucy 5278.

| BE PD | WE PD | YE PD | MILK |
|-------|-------|-------|------|
| -.2 | +59 | +100 | +31 |



SAV BLACKCAP MAY 1234 - Dam of Lots 8-9, 32-33, 43, 64 and 95.

37 LRCC Playbook 1108

Birth Date: 8-22-2018 Bull 19641990 Tattoo: F31

| | | | |
|---------------------------------------|--|------------------------------|------|
| *Basin Payweight 1682 | | #*Basin Payweight 006S | CW |
| TEX Playbook 5437 | | 21AR O Lass 7017 | N/A |
| *18414912 *Rita 1C43 of 9M26 Complete | | #*Summitcrest Complete 1P55 | MB |
| | | *Rita 9M26 of Rita 5F56 Pred | N/A |
| | | #B/R New Design 036 | \$W |
| | | *GAR Ext 4206 | +61 |
| | | #Bon View New Design 1407 | RE |
| | | Basin Lucy 178E | \$EN |
| | | | FAT |
| | | | N/A |
| | | | N/A |

Another son of the Select Sires bull Tex Playbook 5437 tracing to the high income-producing Basin Lucy 178E.

The grandam is a full sister to a number of top-selling females.

| BE PD | WE PD | YE PD | MILK |
|-------|-------|-------|------|
| +1.4 | +53 | +93 | +33 |

SPRINGLAKE AND GUESTS YEARLING BULLS



GAF SOUTHERN CHARM 6303-9018 - Lot 38



GAF Southern Charm 6303-9018

Birth Date: 3-1-2019 Bull Reg.No.Pdg. Tattoo: 9018



GAF Southern Charm 6303-9040

Birth Date: 3-5-2019 Bull +19674255 Tattoo: 9040

*Silveiras Conversion 8064
BUBS Southern Charm AA31
*17853196
*Hickory Hill Erica 009
#*RB Active Duty 010
GAF Blackcap May 4136-6303
*18907075 *SAV Blackcap May 4558

#*BT Crossover 758N
+EXG Saras Dream S609 R3
#*Connealy Stimulus 8419
Hickory Hill Erica TA32
#*LCC New Standard
+*BA Lady 6807 305
#*SAV Registry 2831
*SAV Blackcap May 4136

| | |
|------|--------|
| | CW |
| | I+56 |
| | MB |
| | I+.49 |
| \$W | RE |
| +71 | I+.82 |
| \$EN | FAT |
| -26 | I+.010 |

| | | | | | |
|-------|------|-------|------|----|-----|
| BEPD | WEPD | YEPD | MILK | BW | 205 |
| I+3.6 | I+77 | I+133 | I+23 | 84 | N/A |

A pair of flush brothers by the popular Bubs Southern Charm AA31. The donor dam is the result of mating RB Active Duty 010 with a full sister to both SAV Seedstock 4838 and SAV Sensation 5615.



GAF Southern Charm 9022

Birth Date: 3-6-2019 Bull Reg.No.Pdg. Tattoo: 9022



GAF Southern Charm 7647-9032

Birth Date: 3-6-2019 Bull +19674251 Tattoo: 9032

| | | | |
|-------|-------|-------|--------|
| BEPD | WEPD | YEPD | MILK |
| I+3.7 | I+78 | I+134 | I+24 |
| CW | MB | RE | FAT |
| I+55 | I+.42 | I+.73 | I+.020 |
| \$W | \$EN | | |
| +72 | -34 | | |



GAF Southern Charm 7647-9036

Birth Date: 3-8-2019 Bull +19674252 Tattoo: 9036

*Silveiras Conversion 8064
BUBS Southern Charm AA31
*17853196
*Hickory Hill Erica 009
#*RB Active Duty 010
GAF Blackcap May 4136-7647
*18907079 *SAV Blackcap May 4549

#*BT Crossover 758N
+EXG Saras Dream S609 R3
#*Connealy Stimulus 8419
Hickory Hill Erica TA32
#*LCC New Standard
+*BA Lady 6807 305
+Rito 707 of Ideal 3407 7075
*SAV Blackcap May 4136

| | |
|------|--------|
| | CW |
| | I+55 |
| | MB |
| | I+.42 |
| \$W | RE |
| +72 | I+.73 |
| \$EN | FAT |
| -34 | I+.020 |

| | | | |
|-------|------|-------|------|
| BEPD | WEPD | YEPD | MILK |
| I+3.7 | I+78 | I+134 | I+24 |

Bred much like Lots 38 and 39, these sons of Bubs Southern Charm AA31 were produced from a donor dam who is a result of mating RB Active Duty 010 with a full sister to both SAV Seedstock 4838 and SAV Sensation 5615.

SpringLake & Guests Angus Sale



SAV BLACKCAP MAY 4558 - Grandam of Lots 38, 39 and 83.



GAF Southern Charm 1234-9029

Birth Date: 3-4-2019 Bull +19666752 Tattoo: 9029

*Silveiras Conversion 8064
BUBS Southern Charm AA31
*17853196
*Hickory Hill Erica 009

#*BT Crossover 758N
+EXG Saras Dream S609 R3
#*Connealy Stimulus 8419
Hickory Hill Erica TA32
#SAV 8180 Traveler 004
+SAV May 2410
#SAV 8180 Traveler 004
#*SAV May 2397

| | |
|------|--------|
| | CW |
| | I+53 |
| | MB |
| | I+.54 |
| \$W | RE |
| +69 | I+.83 |
| \$EN | FAT |
| -21 | I+.021 |

#SAV Net Worth 4200
SAV Blackcap May 1234
*16928558 *SAV Blackcap May 4136

| | | | |
|-------|------|-------|------|
| BEPD | WEPD | YEPD | MILK |
| I+4.2 | I+70 | I+118 | I+28 |

An exciting prospect from an embryo mating by Bubs Southern Charm AA31 with the second top-selling cow of the 2019 Graber Sale.

The dam is the last natural calf from the all-time world record income-producing cow SAV Blackcap May 4136 and she is a maternal sister to a long line of prominent sires and top-selling females.



SAV BLACKCAP MAY 4549 - Grandam of Lots 40, 41, 42, 47 and 58.

SPRINGLAKE AND GUESTS YEARLING BULLS



G A F LEGEND 4514-9514 - Lot 45

A son of the ST Genetics sire VAR Legend 5019 from a donor dam by the ABS Global sire KCF Bennett Absolute, stemming from the Pasture View foundation donor RB Lady Standard 305-02. Maternal sisters sold for \$17,000, \$14,000 and \$12,500.



RB LADY ABSOLUTE 02-4514
- Dam of Lots 45 and 46.

45 G A F Legend 4514-9514

| | | |
|--|-------------|-------------|
| Birth Date: 2-21-2019 Bull +*19666317 Tattoo: 9514 | | CW |
| **AAR Ten X 7008 SA | | +70 |
| **Deer Valley Rita 0308 | | MB |
| **SydGen CC&7 | | +57 |
| **Sitz Henrietta Pride 643T | | \$W |
| **SAV Final Answer 0035 | | RE |
| Thomas Miss Lucy 5152 | | +74 |
| **LCC New Standard | | +86 |
| **BA Lady 6807 305 | | \$EN |
| *RB Lady Standard 305-02 | | FAT |
| | | -46 |
| BEPD | WEPD | YEPD |
| +1.5 | +78 | +147 |
| | | MILK |
| | | +25 |

46 G A F Reno 4514-9843

| | | |
|--|-------------|-------------|
| Birth Date: 3-16-2019 Bull +*19666170 Tattoo: 9843 | | CW |
| **Summitcrest Complete 1P55 | | +61 |
| **Summitcrest Princess 0P12 | | MB |
| **CCA Emblazon 702 | | +46 |
| Spring Cove Liza 721 | | \$W |
| **SAV Final Answer 0035 | | RE |
| Thomas Miss Lucy 5152 | | +80 |
| **LCC New Standard | | +82 |
| **BA Lady 6807 305 | | \$EN |
| | | FAT |
| | | -39 |
| BEPD | WEPD | YEPD |
| +1.9 | +71 | +126 |
| | | MILK |
| | | +34 |



GAF RENO 4514-9843 - Lot 46

This bull from the embryo program is by the rare Spring Cove Reno 4021 from a donor dam who has one daughter in production who weaned her first calf with a ratio of 105. The grandam is the \$120,000 valued RB Lady Standard 305-02.



RB LADY STANDARD 305-02 -
Grandam of Lots 45 and 46.

SPRINGLAKE AND GUESTS YEARLING BULLS



JJR BLACKCAP MAY 622 -
Dam of Lot 47.



SAV BLACKCAP MAY 4549 -
Grandam of Lot 47.



G A F PAYWEIGHT 165-9392 - Lot 51

47 GAF Confidence Plus 9254

| | | | |
|--|--|-------------|------------|
| Birth Date: 3-28-2019 Bull +*19577052 Tattoo: 9254 | | CW | |
| *#Connealy Confidence 0100 | | +69 | |
| Connealy Confidence Plus | | MB | |
| *17585576 Elbanna of Conanga 1209 | | +10 | |
| *#SAV International 2020 | | \$W | RE |
| JJR Blackcap May 622 | | +83 | +80 |
| *#18786589 +*SAV Blackcap May 4549 | | \$EN | FAT |
| *SAV Blackcap May 4136 | | -21 | -008 |

| | | | |
|-------------|-------------|-------------|-------------|
| BEPD | WEPD | YEPD | MILK |
| +2.4 | +76 | +136 | +29 |

This bull from the embryo program is by the former Genex sire Connealy Confidence Plus from a powerful donor dam who sold one-half interest as one of the top-selling females of the National Western Foundation Female Sale. The grandam is a full sister to both SAV Seedstock 4838 and SAV Sensation 5615.

51 G A F Payweight 165-9392

| | | | |
|---|--|-------------|------------|
| Birth Date: 2-2-2019 Bull +*19666167 Tattoo: 9392 | | CW | |
| *#Basin Payweight 006S | | +52 | |
| Basin Payweight 1682 | | MB | |
| *#17038724 21AR O Lass 7017 | | +50 | |
| *#Deer Valley All In | | \$W | RE |
| FWY Rita 165 of 6108 | | +91 | +68 |
| *#18305063 +*DRMCTR 111 Rita 6108 | | \$EN | FAT |
| *Vermilion Payweight J847 | | -17 | -018 |
| +Basin Lucy 3829 | | | |
| #HARB Pendleton 765 JH | | | |
| 21AR O Lass F24A | | | |
| *#AAR Ten X 7008 SA | | | |
| +*Deer Valley Rita 0274 | | | |
| *#Rito 111 of 2536 Rito 616 | | | |
| +*DRMCTR 2908s Design 2802 | | | |

| | | | |
|-------------|-------------|-------------|-------------|
| BEPD | WEPD | YEPD | MILK |
| +9 | +73 | +129 | +34 |

A blending of Basin Payweight 1682 and Deer Valley All In. The donor dam is a maternal sister to a long line of top-sellers tracing to the high income-producing cow DRMCTR 111 Rita 6108. A maternal brother sells as Lot 52.

48 SLA Playweight 107-9034

| | | | |
|---|--|-------------|------------|
| Birth Date: 3-5-2019 Bull +*19684144 Tattoo: 9034 | | CW | |
| *#Basin Payweight 006S | | +35 | |
| Basin Payweight 1682 | | MB | |
| *#17038724 21AR O Lass 7017 | | +35 | |
| *#RR Rito 707 | | \$W | RE |
| SLA Madam Pride 107 | | +57 | +16 |
| +*17312803 +*SAV Madame Pride 4312 | | \$EN | FAT |
| #Vermilion Payweight J847 | | +12 | +045 |
| +Basin Lucy 3829 | | | |
| #HARB Pendleton 765 JH | | | |
| 21AR O Lass F24A | | | |
| Rito N Bar | | | |
| Eriskay of Rollin Rock 3 | | | |
| #SAV 8180 Traveler 004 | | | |
| SAV Madame Pride 8264 | | | |

| | | | |
|-------------|-------------|-------------|-------------|
| BEPD | WEPD | YEPD | MILK |
| +1.3 | +51 | +86 | +22 |

This son of the popular ABS Global sire Basin Payweight 1682 was produced from a donor dam who is from the successful mating by the Pathfinder Sire RR Rito 707 with the \$40,000 SAV Madame Pride 4312. Two maternal sisters post a collective progeny weaning ratio of 106.

52 G A F Valor 165-9501

| | | | |
|--|--|-------------|------------|
| Birth Date: 1-29-2019 Bull +*19666168 Tattoo: 9501 | | CW | |
| *#B/R New Day 454 | | +60 | |
| PA Valor 201 | | MB | |
| *#17326601 +*COR Blackcap 6224 Z38 Midlnd | | +64 | |
| *#Deer Valley All In | | \$W | RE |
| FWY Rita 165 of 6108 | | +69 | +1.10 |
| *#18305063 +*DRMCTR 111 Rita 6108 | | \$EN | FAT |
| *#Boyd New Day 8005 | | -23 | -070 |
| B/R Ruby 1224 | | | |
| #BR Midland | | | |
| +VT 1407 New Design Z38 | | | |
| *#AAR Ten X 7008 SA | | | |
| +*Deer Valley Rita 0274 | | | |
| *#Rito 111 of 2536 Rito 616 | | | |
| +*DRMCTR 2908s Design 2802 | | | |

| | | | |
|-------------|-------------|-------------|-------------|
| BEPD | WEPD | YEPD | MILK |
| +1.9 | +73 | +137 | +22 |

This son of the rare PA Valor 201 is a maternal brother to Lot 51 from a donor dam by Deer Valley All In. The grandam has produced a multitude of top-selling progeny to rank her among the breed's high income-producing cows.

49 SLA RM Payweight 908

| | | | | | | | |
|---|--|-------------|-------------|-------------|-------------|------------|-------------|
| Birth Date: 2-20-2019 Bull +*19684132 Tattoo: 908 | | BEPD | WEPD | YEPD | MILK | BW | 205 |
| | | +1.3 | +64 | +109 | +27 | 76 | N/A |
| | | CW | MB | RE | FAT | \$W | \$EN |
| | | +41 | +42 | +34 | +019 | +73 | -13 |

50 SLA RM Payweight 9030

| | | | |
|---|--|-------------|------------|
| Birth Date: 3-5-2019 Bull +*19684133 Tattoo: 9030 | | CW | |
| *#Basin Payweight 006S | | +41 | |
| Basin Payweight 1682 | | MB | |
| *#17038724 21AR O Lass 7017 | | +42 | |
| *#Connealy Capitalist 028 | | \$W | RE |
| RB Lady Capitalist 09-5118 | | +73 | +34 |
| *#18291585 +*RB Lady Standard 305-09 | | \$EN | FAT |
| *#Vermilion Payweight J847 | | -13 | +019 |
| +Basin Lucy 3829 | | | |
| #HARB Pendleton 765 JH | | | |
| 21AR O Lass F24A | | | |
| *#SAV Final Answer 0035 | | | |
| Prides Pita of Conanga 8821 | | | |
| *#LCC New Standard | | | |
| +*BA Lady 6807 305 | | | |

A pair of flush brothers by Basin Payweight 1682 from a donor dam by Connealy Capitalist 028, stemming from a full sister to RB Active Duty 010.



DRMCTR 111 RITA 6108 - Grandam of Lots 51 and 52.

SPRINGLAKE AND GUESTS YEARLING BULLS



SLA BALDRIDGE COLONEL 917 - Lot 53



RB LADY PARTY 192-305 - Grandam of Lot 54.



RB LADY PARTY 167-305 - Grandam of Lot 55.

53 SLA Baldrige Colonel 917
 Birth Date: 2-28-2019 Bull +*9666442 Tattoo: 9017

| | |
|------|--------|
| CW | I+34 |
| MB | I+50 |
| \$W | RE |
| +56 | I+.70 |
| \$EN | FAT |
| -22 | I-.046 |

+baldrige Xpand x743
 Baldrige Colonel C251
 +*18493773 *Baldrige Isabel Y69

#*Hoover Dam
 Baldrige Queen S87
 #*Styles Upgrade J59
 +Baldrige Isabel T935
 #*SAV Final Answer 0035
 Prides Pita of Conanga 8821
 #*LCC New Standard
 +*BA Lady 6807 305

| | | | | | |
|-------|------|-------|------|-----|-----|
| BEPD | WEPD | YEPD | MILK | BW | 205 |
| I+1.7 | I+62 | I+110 | I+20 | 100 | N/A |

A son of the \$580,000 all-time record-selling bull in Nebraska Angus history.
 The donor dam is the result of mating Connealy Capitalist 028 with a full sister to RB Active Duty 010.
 A full sister to the dam sold for \$15,000 and their maternal sister sold for \$75,000.

55 G A F Cowboy up 6108- 9033
 Birth Date: 3-6-2019 Bull +*1968978 Tattoo: 9033

| | |
|------|--------|
| CW | I+56 |
| MB | I+.03 |
| \$W | RE |
| +53 | I+.63 |
| \$EN | FAT |
| -31 | I-.032 |

*HA Outside 3008
 HA Cowboy Up 5405
 *18286467 #*HA Blackcap Lady 1602

#*KG Solution 0018
 #*HA Ever Lady 1575
 #Sitz Upward 307R
 HA Blackcap Lady 5515
 #QAS Traveler 23-4
 Rachel Rito 813 GDAR
 #+*Werner War Party 2417
 +*BA Lady 6807 305

| | | | |
|-------|------|-------|------|
| BEPD | WEPD | YEPD | MILK |
| I+3.1 | I+65 | I+122 | I+21 |

The result of mating the \$350,000 HA Cowboy Up 5405 with a daughter of the legendary Pathfinder Sire Traveler 124 GDAR.
 The \$300,000 valued grandam is a full sister to RB Tour of Duty 177.

54 G A F Colonel 439-9185
 Birth Date: 4-6-2019 Bull +*19651220 Tattoo: 9185

| | |
|------|------|
| CW | +60 |
| MB | +74 |
| \$W | RE |
| +67 | +74 |
| \$EN | FAT |
| -40 | +007 |

+baldrige Xpand x743
 Baldrige Colonel C251
 +*18493773 *Baldrige Isabel Y69

#*KCF Bennett Absolute
 Gaffney Lady Party 439
 +*18120712 +*RB Lady Party 192-305

| | | | |
|------|------|------|------|
| BEPD | WEPD | YEPD | MILK |
| +1.5 | +74 | +139 | +22 |

This son of the \$580,000 Baldrige Colonel C251 is from a \$31,000 donor dam.
 The grandam is the \$152,000 top-selling female of the 2015 National Western Foundation Female Sale and she is a full sister to RB Tour of Duty 177.

56 G A F Cowboy Up 1273-9140
 Birth Date: 4-4-2019 Bull +*19658844 Tattoo: 9140

| | |
|------|------|
| CW | +67 |
| MB | +28 |
| \$W | RE |
| +74 | +78 |
| \$EN | FAT |
| -28 | +011 |

*HA Outside 3008
 HA Cowboy Up 5405
 *18286467 #*HA Blackcap Lady 1602

#*KG Solution 0018
 #*HA Ever Lady 1575
 #Sitz Upward 307R
 HA Blackcap Lady 5515
 #CRA Bextor 872 5205 608
 #+TC Blackbird 4034
 #*Connealy Onward
 +Riverbend Blackbird 4301

| | | | |
|------|------|------|------|
| BEPD | WEPD | YEPD | MILK |
| +3.5 | +85 | +140 | +17 |

A grandson of the high income-producing Sandpoint Blackbird 8809 who has produced a multitude of top-sellers at Vintage Angus Ranch.
 This son of the \$350,000 HA Cowboy Up 5405 is from a donor dam by TC Aberdeen 759.



G A F COLONEL 439-9185 - Lot 54



RB LADY STANDARD 305-09 - Grandam of Lots 49, 50, 53, 60 and 84-90.



SANDPOINT BLACKBIRD 8809 - Grandam of Lot 56.

SPRINGLAKE AND GUESTS YEARLING BULLS

57 SLA Charlo 7075 934

Birth Date: 3-8-2019 Bull Reg.No.Pdg. Tattoo: 934

| | | | |
|----|------|---|--------|
| \$ | CW | D | CW |
| | +20 | | I+38 |
| | MB | | MB |
| | +36 | | I+.01 |
| | RE | | RE |
| | +57 | | I+.47 |
| | FAT | | FAT |
| | +058 | | I+.011 |

#*OCC Paxton 730P
Coleman Charlo 0256
#*16879074 +Bohi Abigale 6014

+Rito 707 of Ideal 3407 7075
SLA Ideal Lady 3625 303
+19640171 #Ideal 3625 of 878 1356

| | | | | | | | | | |
|----|------|------|------|------|---|-------|------|------|------|
| \$ | BEPD | WEPD | YEPD | MILK | D | BEPD | WEPD | YEPD | MILK |
| | -1 | +51 | +91 | +26 | | I+1.8 | I+51 | I+95 | I+22 |

| | | | | | |
|----|-----|------|---|-----|------|
| \$ | \$W | \$EN | D | \$W | \$EN |
| | +81 | +14 | | +48 | -8 |

A son of the Accelerated Genetics Pathfinder Sire Coleman Charlo 0256 from a dam by the great breeding bull Rito 707 of Ideal 3407 7075.
The Pathfinder grandam records progeny weaning and yearling ratios of 107 on five natural calves and a progeny ribeye ratio of 106 on 13 head.



SLA RM RENOWN 9014 - Lot 60

58 SLA RM Special Duty 9021

Birth Date: 3-2-2019 Bull Reg.No.Pdg. Tattoo: 9021

| | | | |
|----|-------|---|-------|
| \$ | CW | D | CW |
| | +42 | | +66 |
| | MB | | MB |
| | +51 | | -24 |
| | RE | | RE |
| | +60 | | +57 |
| | FAT | | FAT |
| | -.040 | | +.008 |

#*LCC New Standard
Holder's Special Duty 3533
#*17742154 +*BA Lady 6807 305

#*RB Active Duty 010
GAF Blackcap May 4136-7647
#*18907079 +*SAV Blackcap May 4549

| | | | | | | | | | |
|----|------|------|------|------|---|------|------|------|------|
| \$ | BEPD | WEPD | YEPD | MILK | D | BEPD | WEPD | YEPD | MILK |
| | +1.7 | +71 | +125 | +25 | | +4.3 | +88 | +154 | +19 |

| | | | | | |
|----|-----|------|---|-----|------|
| \$ | \$W | \$EN | D | \$W | \$EN |
| | +69 | -38 | | +68 | -54 |

A son of the ORigen sire Holder's Special Duty 3533 from a donor dam by RB Active Duty 010.
The grandam has a progeny weaning ratio of 106 on one natural calf along with a progeny ribeye ratio of 112 on three head and she is a full sister to SAV Seedstock 4838 and SAV Sensation 5615.

60 SLA RM Renown 9014

Birth Date: 2-28-2019 Bull Reg.No.Pdg. Tattoo: 9014

| | | | |
|----|------|---|-------|
| \$ | CW | D | CW |
| | +47 | | +29 |
| | MB | | MB |
| | -10 | | +.20 |
| | RE | | RE |
| | +95 | | +44 |
| | FAT | | FAT |
| | +015 | | -.032 |

+Rito 707 of Ideal 3407 7075
SAV Renown 3439
#*17633839 +*SAV Blackcap May 4136

#RR Rito 707
Ideal 3407 of 1418 076
#SAV 8180 Traveler 004
#*SAV May 2397
#*SAV Final Answer 0035
Prides Pita of Conanga 8821
#*LCC New Standard
+*BA Lady 6807 305

| | | | | | | | | | |
|----|------|------|------|------|---|------|------|------|------|
| \$ | BEPD | WEPD | YEPD | MILK | D | BEPD | WEPD | YEPD | MILK |
| | +2.8 | +72 | +128 | +21 | | +2.0 | +61 | +98 | +21 |

| | | | | | | | |
|----|-----|------|---|-----|------|-----|-----|
| \$ | \$W | \$EN | D | \$W | \$EN | BW | 205 |
| | +71 | -21 | | +57 | -23 | 105 | N/A |

A product of the embryo program backed by SAV Renown 3439 and Connealy Capitalist 028.
The grandam is a full sister to RB Active Duty 010 and to a number of top-selling females including the \$175,000 RB Lady Standard 305-890.

59 SLA RM Special Duty 9010

Birth Date: 2-21-2019 Bull +19684068 Tattoo: 9010

| | |
|----|--------|
| \$ | CW |
| | I+39 |
| | MB |
| | I+.40 |
| | RE |
| | +63 |
| | I+.43 |
| | FAT |
| | -24 |
| | I+.010 |

#*LCC New Standard
Holder's Special Duty 3533
#*17742154 +*BA Lady 6807 305

#*SAV International 2020
Linz Elba 8969-5152
+18837029 +SAV Elba 8969

| | | | | | | |
|----|------|------|------|------|----|-----|
| \$ | BEPD | WEPD | YEPD | MILK | BW | 205 |
| | +1.6 | +62 | +106 | +26 | 85 | N/A |

This son of the ORigen sire Holder's Special Duty 3533 was produced from a donor dam by SAV International 2020.
The grandam is a proven donor from the mating of SAV Net Worth 4200 with SAV Elba 1094.

61 SLA RM Capitalist 921

Birth Date: 2-25-2019 Bull Reg.No.Pdg. Tattoo: 921

| | | | |
|----|------|---|--------|
| \$ | CW | D | CW |
| | +29 | | I+64 |
| | MB | | MB |
| | +32 | | I-.02 |
| | RE | | RE |
| | +45 | | I+.89 |
| | FAT | | FAT |
| | +024 | | I-.024 |

#*SAV Final Answer 0035
Connealy Capitalist 028
#*16752262 Prides Pita of Conanga 8821

+*SAV Regard 4863
WMS Blackcap May 702
+18899866 #*SAV Blackcap May 8980

| | | | | | | | | | |
|----|------|------|------|------|---|------|------|------|------|
| \$ | BEPD | WEPD | YEPD | MILK | D | BEPD | WEPD | YEPD | MILK |
| | +2 | +57 | +99 | +18 | | +6.1 | +76 | +130 | +27 |

| | | | | | |
|----|-----|------|---|-----|------|
| \$ | \$W | \$EN | D | \$W | \$EN |
| | +61 | -7 | | +61 | -34 |

A son of the Select Sires Pathfinder Sire Connealy Capitalist 028 from a donor dam by the Genex sire SAV Regard 4863.
The Pathfinder grandam produced the \$55,000 ST Genetics sire SAV Ground Breaker 4239.



SLA RM SPECIAL DUTY 9010 - Lot 59



SLA RM CAPITALIST 921 - Lot 61

SPRINGLAKE AND GUESTS YEARLING BULLS



G A F ACTIVE DUTY 7397-926 - Lot 62



SAV MAY 2397 - Pathfinder grandam of Lots 62, 63 and 82.

62 G A F Active Duty 7397-926

| | | | | | | | |
|------------------------------|--|---------------------------|--|-----------------------|--|-------------|--|
| Birth Date: 3-9-2019 | | Bull +*19670672 | | Tattoo: 926 | | CW | |
| #*LCC New Standard | | #Bon View New Design 1407 | | LCC Sunset K3118 | | +47 | |
| RB Active Duty 010 | | #Vermilion Dateline 7078 | | #RR Rito 707 | | MB | |
| #*16718300 | | +*BA Lady 6807 305 | | +GD Lady Hi Flyer 302 | | +06 | |
| | | | | \$W | | RE | |
| +Rito 707 of Ideal 3407 7075 | | #SAF 598 Bando 5175 | | SAV May 7238 | | +63 +.46 | |
| WMS Blackcap May 7397 | | | | | | \$EN | |
| +*18889604 | | #*SAV May 2397 | | | | -30 +.031 | |

This bull from the embryo program is sired by the now-deceased RB Active Duty 010 who is a maternal brother to RB Tour of Duty 177.
The donor dam is a full sister to SAV Blackcap May 1782 and a maternal sister to SAV Blackcap May 4136 stemming from the Pathfinder Dam SAV May 2397.

| | | | |
|-------------|-------------|-------------|-------------|
| BEPD | WEPD | YEPD | MILK |
| +1.0 | +65 | +116 | +23 |

64 G A F Banknote 1234-9312

| | | | | | | | |
|-------------------------|--|-------------------------|--|---------------------------------|--|-------------|--|
| Birth Date: 1-29-2019 | | Bull +*19666166 | | Tattoo: 9312 | | CW | |
| #*Connealy Earnan 076E | | #*Connealy Consensus | | +*Brazilia of Conanga 3991 839A | | +46 | |
| Brooking Bank Note 4040 | | #*SAV Final Answer 0035 | | EA Rose 738 | | MB | |
| *18069951 | | *EA Rose 918 | | #SAV 8180 Traveler 004 | | +15 | |
| | | | | \$W | | RE | |
| #SAV Net Worth 4200 | | #SAV 8180 Traveler 004 | | +SAV May 2410 | | +58 +.68 | |
| SAV Blackcap May 1234 | | #SAV 8180 Traveler 004 | | #*SAV May 2397 | | \$EN | |
| *16928558 | | *SAV Blackcap May 4136 | | | | -5 +.015 | |

This bull from the embryo program is from the mating of Brooking Bank Note 4040 with SAV Blackcap May 1234.
The dam from the mating of the three-quarter siblings SAV Net Worth 4200 and SAV Blackcap May 4136.

| | | | |
|-------------|-------------|-------------|-------------|
| BEPD | WEPD | YEPD | MILK |
| +5.4 | +74 | +115 | +15 |

63 SLA RM Game Changer 9023

| | | | | | | | | | |
|----------------------------|--|----------------------------|--|--------------|--|--------------|--|-------------|--|
| Birth Date: 3-2-2019 | | Bull Reg.No.Pdg. | | Tattoo: 9023 | | \$ CW | | D CW | |
| #*Connealy Confidence 0100 | | Connealy Tobin | | +46 | | +53 | | | |
| Gaffney Game Changer 371 | | Becka Gala of Conanga 8281 | | MB | | MB | | | |
| +*17805944 | | *RB Lady Standard 305-890 | | +54 | | -.02 | | | |
| | | | | RE | | RE | | | |
| #*SAV International 2020 | | #*SAV Emblynette 5483 | | +1.06 | | +.44 | | | |
| Gaffney May 5555 | | #*SAF 598 Bando 5175 | | FAT | | FAT | | | |
| +*18513821 | | #*SAV May 2397 | | SAV May 7238 | | -.004 | | +.065 | |

| | | | | | | | |
|----------------|-------------|--------------|-------------|---------------|-------------|-------------|-------------|
| \$ BEPD | WEPD | YEPD | MILK | D BEPD | WEPD | YEPD | MILK |
| -1.2 | +56 | +101 | +35 | +5.7 | +69 | +107 | +33 |
| \$ \$W | \$EN | D \$W | \$EN | BW | 205 | | |
| +76 | -2 | +71 | -21 | 85 | N/A | | |

A son of the Select Sires bull Gaffney Game Changer 371 produced from a dam with progeny weaning and yearling ratios of 108 and 116, respectively, on her first natural calf.
The Pathfinder grandam has produced a multitude of outstanding progeny including SAV Brave 8320, SAV Angus Valley 1867 and a long line of noted females.

65 SLA Billy Martin 915 [OHP]

| | | | | | | | | | |
|------------------------|--|-------------------------------|--|-------------|--|--------------|--|-------------|--|
| Birth Date: 2-20-2019 | | Bull Reg.No.Pdg. | | Tattoo: 915 | | \$ CW | | D CW | |
| #*Tehama Upward Y238 | | #Sitz Upward 307R | | +42 | | N/A | | | |
| Tehama Tahoe B767 | | +*Tehama Elite Blackbird T735 | | MB | | MB | | | |
| +*17817177 | | *Tehama Mary Blackbird Y684 | | +83 | | N/A | | | |
| | | | | RE | | RE | | | |
| +SLA RR Rito 7075 3015 | | #Rito 707 of Ideal 3407 7075 | | +77 | | N/A | | | |
| SLA Mulben Pride 724 | | *Miss Wix 5027 of 124 | | FAT | | FAT | | | |
| 18992294 | | SLA Excel Pride 924 5129 | | +0.17 | | N/A | | | |

| | | | | | | | |
|----------------|-------------|--------------|-------------|---------------|-------------|-------------|-------------|
| \$ BEPD | WEPD | YEPD | MILK | D BEPD | WEPD | YEPD | MILK |
| -8 | +75 | +127 | +28 | +3.4 | +29 | +58 | +23 |
| \$ \$W | \$EN | D \$W | \$EN | \$W | \$EN | | |
| +90 | -10 | +17 | +12 | | | | |

A son of the Select Sires bull Tehama Tahoe B767.
The dam is a granddaughter of Rito 707 of Ideal 3407 7075.

SPRINGLAKE AND GUESTS YEARLING BULLS



SVA RAINDANCE 057 - Lot 66

66 SVA Raindance 057
 Birth Date: 1-12-2019 Bull 19390187 Tattoo: 057

| | |
|------|--------|
| CW | I+46 |
| MB | I+.26 |
| \$W | RE |
| +65 | I+.64 |
| \$EN | FAT |
| -9 | I+.004 |

#*Coleman Charlo 0256 #*OCC Paxton 730P
 SAV Raindance 6848 +Bohi Abigale 6014
 +*18578965 *SAV Blackcap May 4136 #SAV 8180 Traveler 004
 #*SAV May 2397
 *SAV First Class 0207 #SAV Net Worth 4200
 Champion Hill Lucy 8209 #*SAV Duke Girl 7348
 +17261687 +Champion Hill Lucy 5619 #SAV Peacemaker 3179
 +Champion Hill Lucy 3062

| | | | |
|-------|------|-------|------|
| BEPD | WEPD | YEPD | MILK |
| I+2.0 | I+54 | I+100 | I+33 |

A January yearling son of the popular ST Genetics sire SAV Raindance 6848.

The dam records a progeny birth ratio of 91 combined with a progeny weaning ratio of 108 on her first calf, and she is a product of the embryo program at Champion Hill from the cow family that produced SAV Final Answer 0035.



SVA 012 PIONEER 069 - Lot 71

71 SVA 012 Pioneer 069
 Birth Date: 3-18-2019 Bull 19548214 Tattoo: 069

| | |
|------|--------|
| CW | I+27 |
| MB | I+.49 |
| \$W | RE |
| +53 | I+.46 |
| \$EN | FAT |
| -11 | I+.020 |

#SAV Pioneer 7301 #*SAV Final Answer 0035
 SVA Pioneer 012 SAV Blackbird 5297
 *18805422 +*Champion Hill Blossom 8756 *Champion Hill Blossom 8081
 #Sitz Upside 547W #Sitz Upward 307R
 Blackcap SS B107 Sitz Emma 27T
 17857657 Blackcap SSX7 SS Insight T20
 Blackcap SS U50

| | | | |
|------|------|------|------|
| BEPD | WEPD | YEPD | MILK |
| I+.1 | I+48 | I+91 | I+27 |

A grandson of the Genex Pathfinder Sire SAV Pioneer 7301.

Two maternal sisters post a collective progeny weaning ratio of 104.

67 SVA Sensation 059
 Birth Date: 2-10-2019 Bull +19388678 Tattoo: 059

68 SVA Sensation 060
 Birth Date: 2-16-2019 Bull +19388679 Tattoo: 060

69 SVA Sensation 063
 Birth Date: 2-18-2019 Bull +19388681 Tattoo: 063

| | |
|------|--------|
| CW | I+40 |
| MB | I+.25 |
| \$W | RE |
| +47 | I+.58 |
| \$EN | FAT |
| -18 | I+.004 |

#*SAV Registry 2831 +Rito 707 of Ideal 3407 7075
 SAV Sensation 5615 SAV Madame Pride 0075
 +*18258149 *SAV Blackcap May 4136 #SAV 8180 Traveler 004
 #*SAV May 2397
 *SAV Momentum 9274 #SAV Net Worth 4200
 Champion Hill Georgina 8455 #SAV Emblynette 3301
 +17689603 +Champion Hill Georgina 6240 #*SAV Mandan 5664
 +CHAMPION HILL Georgina 3842

| | | | |
|-------|------|------|------|
| BEPD | WEPD | YEPD | MILK |
| I+2.2 | I+50 | I+91 | I+25 |

A group of three flush brothers sired by the record-selling SAV Sensation 5615 from a donor dam produced in the Champion Hill herd by SAV Momentum 9274.

The grandam is a former champion from the National Western Grand Champion Female Champion Hill Georgina 3842.

70 SVA 012 Pioneer 071
 Birth Date: 3-25-2019 Bull 19548215 Tattoo: 071

| | |
|------|--------|
| CW | I+29 |
| MB | I+.08 |
| \$W | RE |
| +47 | I+.70 |
| \$EN | FAT |
| -17 | I+.006 |

#SAV Pioneer 7301 #*SAV Final Answer 0035
 SVA Pioneer 012 SAV Blackbird 5297
 *18805422 +*Champion Hill Blossom 8756 *Champion Hill Blossom 8081
 #*SAV International 2020 #*SAV Harvester 0338
 YAF May 6315 #*SAV Emblynette 5483
 18676271 +Champion Hill May 8378 #*SAV Resource 1441
 +Champion Hill May 6735

| | | | |
|-------|------|------|------|
| BEPD | WEPD | YEPD | MILK |
| I+3.4 | I+54 | I+96 | I+24 |

A grandson of the proven Pathfinder sires SAV Pioneer 7301 and SAV International 2020 backed with Champion Hill influence.

72 G A F Titus 165-973
 Birth Date: 4-1-2019 Bull +*19665872 Tattoo: 973

| | |
|------|------|
| CW | +65 |
| MB | +68 |
| \$W | RE |
| +74 | +77 |
| \$EN | FAT |
| -28 | +023 |

*Byergo Black Magic 3348 *Silveiras Conversion 8064
 Byergo Titus 6340 *Byergo Elia Cupcake 5900
 *18818214 #Byergo Miss Elia 2834 Byergo Big Time 8728
 Byergo Miss Elia 8756
 #*EXAR Denver 2002B #*EXAR Upshot 0562B
 Dean's Queenie B165 +Exar Royal Lass 1067
 +*18155901 +Roden RL Queenie 70527 #*E&B 1680 Precision 1023
 #*GAR Ext 916

| | | | |
|------|------|------|------|
| BEPD | WEPD | YEPD | MILK |
| +1.3 | +75 | +138 | +23 |

This bull from the embryo program is by the ABS Global sire Byergo Titus 6340.

The donor dam is from the \$102,000 Roden RL Queenie 70527 who produced daughters selling for \$72,000, \$100,000 and for a \$600,000 valuation.



G A F TITUS 165-973 - Lot 72

SPRINGLAKE AND GUESTS YEARLING BULLS



MAJESTY 8182 OF 7365 4465 - Grandam of Lot 75.

75 SLA DL Rito 6014 Z96

| | | | | | | | |
|-----------------------------|------|-----------------------------|------|------------------------------|------|--------------------------|------|
| Birth Date: 3-1-2019 | | Bull Reg.No./Pdg. | | Tattoo: 6014 | | \$ CW | D CW |
| #RR Rito 707 | | Rito N Bar | | +26 | | +22 | |
| SLA RR Rito 707 6014 | | Erickay of Rollin Rock 3 | | MB | | MB | |
| +*18512528 | | #Ideal 3625 of 878 1356 | | +05 | | +02 | |
| | | #Bon View New Design 878 | | RE | | RE | |
| | | +Ideal 1356 of 6442 4465 | | +12 | | +08 | |
| | | #Emulation N Bar 5522 | | FAT | | FAT | |
| AOA Ideal Lady 0840 EXT TVA | | N Bar Primrose 2424 | | +028 | | +024 | |
| +16715375 | | +*Majesty 8182 of 7365 4465 | | Ideal 7365 Super X 5189 5180 | | +Ideal 4465 of 6807 4286 | |
| \$ BEPD | WEPD | YEPD | MILK | D BEPD | WEPD | YEPD | MILK |
| +3.1 | +41 | +74 | +19 | +1.4 | +38 | +67 | +22 |
| \$ | \$W | \$EN | | D | \$W | \$EN | |
| | +29 | +10 | | | +36 | +5 | |

A grandson of the Pathfinder Sires RR Rito 707 and N Bar Emulation EXT. The grandams were both produced at Jorgensen Ranches.

73 SVA Classified 061

| | | | | | | |
|------------------------|--|----------------------------|--|-------------|--|--------|
| Birth Date: 2-17-2019 | | Bull 19387208 | | Tattoo: 061 | | CW |
| #SAV First Class 0207 | | #SAV Net Worth 4200 | | I+41 | | MB |
| SAV Classified 3427 | | #*SAV Duke Girl 7348 | | I+.21 | | RE |
| +*17635321 | | #SAV 8180 Traveler 004 | | +59 | | I+.35 |
| *SAV Blackcap May 4136 | | #+SAV May 2397 | | \$EN | | FAT |
| AF Right Answer 3029 | | #Connealy Right Answer 746 | | -10 | | I+.010 |
| SVA Elba CD4 | | JJD Maria 6037 | | | | |
| 18198641 | | SAV North Dakota 7451 | | | | |
| *McClarnon Elba 3168 | | Mc Clarnon Elba 368 | | | | |

A yearling son of the Champion Hill featured sire SAV Classified 3427. The dam is a granddaughter of Connealy Right Answer 746 and SAV North Dakota 7451.

74 SVA INT 066

| | | | | | | |
|------------------------------|--|------------------------------|--|-------------|--|--------|
| Birth Date: 3-12-2019 | | Bull 19548216 | | Tattoo: 066 | | CW |
| #*SAV International 2020 | | #*SAV Harvester 0338 | | I+30 | | MB |
| Champion Hill Int 2020 5825 | | #*SAV Emblynette 5483 | | I+.09 | | RE |
| +*18242648 | | #SAV Bismarck 5682 | | +62 | | I+.56 |
| *Champion Hill Cheyenne 8316 | | +Champion Hill Cheyenne 7785 | | \$EN | | FAT |
| #*Connealy Confidence 0100 | | Connealy Tobin | | -5 | | I+.037 |
| SVA Eventress C01 | | Becka Gala of Conanga 8281 | | | | |
| +*18198643 | | #SAV Pioneer 7301 | | | | |
| KF Pioneer's Sue | | Double O Eventress R33 | | | | |

A grandson of SAV International 2020 and Connealy Confidence 0100. The sire was produced at Champion Hill.

76 SLA Bubba T124-933 [OHP]

| | | | | | | | |
|-------------------------|------|-------------------------|------|-----------------------------|------|-------|------|
| Birth Date: 3-6-2019 | | Bull Reg.No./Pdg. | | Tattoo: 933 | | \$ CW | D CW |
| #Traveler 124 GDAR | | #OAS Traveler 23-4 | | +28 | | N/A | |
| Mr 124 of 1107-3008 | | Rachel Rito 813 GDAR | | MB | | MB | |
| +*16993131 | | Vermilion Dateline 7078 | | +16 | | N/A | |
| | | +VDAR Miss Wix 5027 | | RE | | RE | |
| | | #Traveler 124 GDAR | | +37 | | N/A | |
| | | VDAR Miss Wix 1107 | | FAT | | FAT | |
| SLA Blackwood Lady 5149 | | +Rito 707 of Ideal | | +022 | | N/A | |
| 18270841 | | SLA Blackwood Lady 99 | | Lady Val of BJ Dominator SL | | | |
| \$ BEPD | WEPD | YEPD | MILK | D BEPD | WEPD | YEPD | MILK |
| +2.9 | +44 | +84 | +22 | +1.3 | +21 | +44 | +18 |
| \$ | \$W | \$EN | | D | \$W | \$EN | |
| | +33 | -10 | | | +9 | +15 | |

This bull is double-bred to the legendary Pathfinder Sire Traveler 124 GDAR. The dam records a progeny weaning ratio of 107 on two calves.

77 SLA Traveler 124 3625 999

| | | | | | | | |
|---------------------------|------|---------------------------|------|-------------|------|-------|------|
| Birth Date: 4-12-2019 | | Bull Reg.No./Pdg. | | Tattoo: 999 | | \$ CW | D CW |
| #Traveler 124 GDAR | | #OAS Traveler 23-4 | | +25 | | +18 | |
| SLA GAF T124 5033 | | Rachel Rito 813 GDAR | | MB | | MB | |
| +*18156071 | | #Bon View New Design 878 | | +24 | | +34 | |
| | | +Ideal 1356 of 6442 4465 | | RE | | RE | |
| | | SLA C PR 7118 911 418 | | +32 | | +11 | |
| | | SLA Rito 4H T011 907 267 | | FAT | | FAT | |
| SLA Realm 911 418 267 663 | | #RR Traveler 5204 | | +026 | | +010 | |
| SLA Blueblood Lady 2111 | | SLA Ariel 24H 748 707 137 | | | | | |
| 17775932 | | SLA Ariel 5204 137 302 | | | | | |
| \$ BEPD | WEPD | YEPD | MILK | D BEPD | WEPD | YEPD | MILK |
| +1.5 | +44 | +85 | +29 | -.1 | +31 | +57 | +14 |
| \$ | \$W | \$EN | | D | \$W | \$EN | |
| | +46 | -6 | +18 | | +11 | BW | 205 |
| | | | | | | 78 | 441 |

A grandson of the legendary Pathfinder Sire Traveler 124 GDAR. This bull is backed by generations of SpringLake breeding.



This ranch sign, made in 1962 by Gene and Delbert Timperley, is posted on the barn at the original SpringLake homestead.

78 SLA Bobby Murcer 978 [OHP]

| | | | | | | | |
|------------------------------|------|------------------------------|------|----------------------------|------|-------|------|
| Birth Date: 3-29-2019 | | Bull 19640172 | | Tattoo: 978 | | \$ CW | D CW |
| SLA Valor 038 224 BM 401 297 | | SLA Realm 911 418 267 663 | | N/A | | N/A | |
| SLA Rito Excel 297 596 | | SLA Valor 038 0010 224 BM | | MB | | MB | |
| 18270843 | | +SLA Retro 7012 of 9805 771 | | N/A | | N/A | |
| | | SLA Vanessa O 7071 9106 | | \$W | | RE | |
| | | +Rito 707 of Ideal 3407 7075 | | +28 | | N/A | |
| | | SLA JJ 926N 775 8111 021 | | \$EN | | FAT | |
| SLA Eline Erica 5198 | | +*SLA Twister 602 508 | | +10 | | N/A | |
| 18443648 | | SLA Eline Erica 169 | | SLA Miss Lucky 544 041 775 | | | |
| BEPD | WEPD | YEPD | MILK | BW | YEPD | MILK | |
| +2.5 | +42 | +70 | +16 | 83 | 205 | 428 | |

This bull records an individual weaning ratio of 111 from a dam with a progeny weaning ratio of 102 on two calves. This bull is backed by generations of SpringLake breeding.

SPRINGLAKE AND GUESTS SUMMER/FALL BULL CALVES



G A F RENO 758-9228 - Lot 79



BALDRIDGE ISABEL B758 - Dam of Lots 79 and 80.

79 G A F Reno 758-9228

| | | |
|--|-----------------------------|--------------|
| Birth Date: 7-15-2019 Bull +*19651569 Tattoo: 9228 | | CW |
| #*KM Broken Bow 002 | #*Summitcrest Complete 1P55 | +54 |
| Spring Cove Reno 4021 | #Summitcrest Princess OP12 | MB |
| *17926446 *Spring Cove Liza 021 | #*CCA Emblazon 702 | +52 |
| | Spring Cove Liza 721 | \$W |
| #*Styles Upgrade J59 | #Sitz Upward 307R | RE |
| Baldrige Isabel B758 | Plainview Lassie 71B | +86 |
| +*18060644 +Baldrige Isabel T935 | #Baldrige Kaboom K243 KCF | +81 |
| | +Baldrige Isabel P4527 | \$EN |
| | | FAT |
| | | -37 |
| | | -.028 |

This July bull calf is by the rare Spring Cove Reno

4021 from a donor dam who has the distinction of being a full sister to the high income-producing Baldrige Isabel Y69.

Baldrige Isabel Y69 has produced a multitude of top-sellers including the \$580,000 Baldrige Colonel C251 as well as Baldrige Isabel E080 who sold one-half interest for \$135,000 as the top-selling Lot 1 cow of the 2019 Graber Sale where her son sold one-half interest for \$225,000.

| | | | |
|-------------|-------------|-------------|-------------|
| BEPD | WEPD | YEPD | MILK |
| +1.7 | +77 | +134 | +32 |

80 G A F No Doubt 758-999

| | | |
|--|-----------------------------|--------------|
| Birth Date: 10-31-2019 Bull +*19651838 Tattoo: 999 | | CW |
| #*Mogck Bullseye | #MOGCK Sure Shot | +63 |
| Hoover No Doubt | Mogck Mary 1255 | MB |
| *17882682 *Miss Blackcap Ellston J2 | #*SydGen CC&7 | +59 |
| | #Miss Blackcap Ellston D154 | \$W |
| #*Styles Upgrade J59 | #Sitz Upward 307R | RE |
| Baldrige Isabel B758 | Plainview Lassie 71B | +66 |
| +*18060644 +Baldrige Isabel T935 | #Baldrige Kaboom K243 KCF | +71 |
| | +Baldrige Isabel P4527 | \$EN |
| | | FAT |
| | | -31 |
| | | -.005 |

This October bull calf is a maternal brother to Lot 79 produced from a full sister to the high income-producing Baldrige Isabel Y69.

This son of the rare Hoover No Doubt has a maternal sister in production who weaned her first calf with a ratio of 106.

| | | | |
|-------------|-------------|-------------|-------------|
| BEPD | WEPD | YEPD | MILK |
| +5.0 | +80 | +137 | +21 |



BALDRIDGE ISABEL Y69
- Full sister to the dam of Lots 79 and 80.



BALDRIDGE ISABEL E080 -
Produced from a full sister to the dam of Lots 79 and 80.



G A F NO DOUBT 758-999 - Lot 80

SPRINGLAKE AND GUESTS SUMMER BULL CALVES



G A F NO DOUBT 165-9699 - Lot 81



DEAN'S QUEENIE B165 - Dam of Lots 72 and 81.

81 G A F No Doubt 165-9699

| | | |
|---|-----------------------------|--------------|
| Birth Date: 7-3-2019 Bull +*19658856 Tattoo: 9699 | | CW |
| #* Mogck Bullseye | #MOGCK Sure Shot | +60 |
| Hoover No Doubt | Mogck Mary 1255 | MB |
| +*17882682 | *Miss Blackcap Ellston J2 | +54 |
| #* EXAR Denver 2002B | #Miss Blackcap Ellston D154 | \$W |
| Dean's Queenie B165 | *EXAR Upshot 0562B | +60 |
| +*18155901 | +Exar Royal Lass 1067 | RE |
| +Roden RL Queenie 70527 | #*E&B 1680 Precision 1023 | +94 |
| | #*GAR Ext 916 | \$EN |
| | | FAT |
| | | -18 |
| | | -.004 |

This maternal brother to Lot 72 is from the featured donor Dean's Queenie B165 whose maternal sisters have sold for \$72,000, \$100,000 and for a \$600,000 valuation. The grandam sold for \$102,000.

| | | | |
|-------------|-------------|-------------|-------------|
| BEPD | WEPD | YEPD | MILK |
| +2.1 | +66 | +120 | +20 |

82 G A F No Doubt 7397-934

| | | |
|--|-----------------------------|-------------|
| Birth Date: 7-1-2019 Bull +*19670769 Tattoo: 934 | | CW |
| #* Mogck Bullseye | #MOGCK Sure Shot | +48 |
| Hoover No Doubt | Mogck Mary 1255 | MB |
| +*17882682 | *Miss Blackcap Ellston J2 | +38 |
| #* EXAR Denver 2002B | #Miss Blackcap Ellston D154 | \$W |
| Dean's Queenie B165 | *RR Rito 707 | +59 |
| +*18155901 | Ideal 3407 of 1418 076 | RE |
| +Roden RL Queenie 70527 | #*SAF 598 Bando 5175 | +89 |
| | SAV May 7238 | \$EN |
| | | FAT |
| | | -29 |
| | | +030 |

The result of mating the rare Hoover No Doubt with a daughter of the great breeding bull Rito 707 of Ideal 3407 7075, stemming from the Pathfinder Dam SAV May 2397. The dam is a full sister to the dam of the \$800,000 SAV Elation 7899.

| | | | |
|-------------|-------------|-------------|-------------|
| BEPD | WEPD | YEPD | MILK |
| +1.2 | +61 | +116 | +25 |



G A F NO DOUBT 7397-934 - Lot 82

83 G A F Weigh Up 6303-9499

| | | |
|--|---------------------------|--------------|
| Birth Date: 5-19-2019 Bull +*19677008 Tattoo: 9499 | | CW |
| #Sitz Upward 307R | #*Connealy Onward | +56 |
| Plattmereg Weigh Up K360 | Sitz Henrietta Pride 81M | MB |
| +*16692552 | #GAR Retail Product | +41 |
| #*RB Active Duty 010 | Barbara of Plattmereg 311 | \$W |
| GAF Blackcap May 4136-6303 | *LCC New Standard | +74 |
| +*18907075 | *BA Lady 6807 305 | RE |
| +SAV Blackcap May 4558 | *+SAV Registry 2831 | +82 |
| | *SAV Blackcap May 4136 | \$EN |
| | | FAT |
| | | -18 |
| | | -.042 |

A son of the now-deceased Pathfinder Sire Plattmereg Weigh Up K360 from a dam by the now-deceased Pathfinder Sire RB Active Duty 010. The grandam is a full sister to both SAV Seedstock 4838 and SAV Sensation 5615.

| | | | |
|-------------|-------------|-------------|-------------|
| BEPD | WEPD | YEPD | MILK |
| +1 | +67 | +123 | +26 |



G A F WEIGH UP 6303-9499 - Lot 83

SPRINGLAKE AND GUESTS BLACKCAP MAY FAMILY



GAF SOUTHERN CHARM 7414-9039 - Lot 92



SAV BLACKCAP MAY 8980 - Pathfinder
grandam of Lots 44, 61 and 92-93.

92 GAF Southern Charm 7414-9039

| | | | | |
|----------------------------|--------------------------|--------------|------|--------|
| Birth Date: 3-12-2019 | Cow +19666737 | Tattoo: 9039 | | |
| *Silveiras Conversion 8064 | ##BT Crossover 758N | | CW | I+42 |
| BUBS Southern Charm AA31 | +EXG Saras Dream S609 R3 | | MB | I+.60 |
| *17853196 | *Connealy Stimulus 8419 | | \$W | RE |
| | Hickory Hill Erica TA32 | | +68 | I+.69 |
| | *AAR Ten X 7008 SA | | \$EN | FAT |
| *SAV Ten Speed 3022 | #SAV Madame Pride 1134 | | -23 | I+.016 |
| WMS Blackcap May 7414 | #SAV 8180 Traveler 004 | | | |
| *18904939 | ##SAV May 2397 | | | |

A daughter of the popular Bubs Southern Charm

AA31 from a dam by the proven Genex sire SAV Ten Speed 3022. The dam is a maternal sister to the \$55,000 ST Genetics sire SAV Ground Breaker 4239, stemming from the Pathfinder Dam SAV Blackcap May 8980.

| BE PD | WE PD | YE PD | MILK |
|-------|-------|-------|------|
| I+2.8 | I+66 | I+115 | I+28 |

93 SLA RM Blackcap May 912

| | | | | |
|-------------------------|-----------------------------|-------------|------|--------|
| Birth Date: 2-20-2019 | Cow Reg.No.Pdg. | Tattoo: 912 | | |
| ##SAV Final Answer 0035 | #Sitz Traveler 8180 | | CW | D CW |
| Connealy Capitalist 028 | SAV Emulous 8145 | | +29 | I+64 |
| *16752262 | #CRA Bextor 872 5205 608 | | MB | MB |
| | Prides Pita of Conanga 8821 | | +32 | I-.02 |
| | Prides Trav of Conanga 6499 | | RE | RE |
| | ##SAV Resource 1441 | | +45 | I+.89 |
| *SAV Regard 4863 | ##SAV Blackcap May 5530 | | FAT | FAT |
| WMS Blackcap May 702 | #SAV 8180 Traveler 004 | | +024 | I-.024 |
| +18899866 | ##SAV Blackcap May 8980 | | | |

| \$ | BE PD | WE PD | YE PD | MILK | D | BE PD | WE PD | YE PD | MILK |
|----|-------|-------|-------|------|---|-------|-------|-------|------|
| | +2 | +57 | +99 | +18 | | +6.1 | +76 | +130 | +27 |

| \$ | \$W | \$EN | D | \$W | \$EN | BW | 205 |
|----|-----|------|---|-----|------|----|-----|
| | +61 | -7 | | +61 | -34 | 79 | N/A |

A blending of the Select Sires Pathfinder Sires Connealy Capitalist 028 and the Genex sire SAV Regard 4863.

The Pathfinder grandam is a full sister to the all-time world record income-producing cow.

94 SLA RM May 5555 9026

| | | | | |
|---------------------------|----------------------------|--------------|-------|------|
| Birth Date: 3-3-2019 | Cow Reg.No.Pdg. | Tattoo: 9026 | | |
| *Connealy Confidence 0100 | Connealy Tobin | | CW | D CW |
| Gaffney Game Changer 371 | Becka Gala of Conanga 8281 | | +46 | +53 |
| *17805944 | *LCC New Standard | | MB | MB |
| | *RB Lady Standard 305-890 | | +54 | -.02 |
| | *BA Lady 6807 305 | | RE | RE |
| | *SAV International 2020 | | +1.06 | +44 |
| Gaffney May 5555 | ##SAV Emblynette 5483 | | FAT | FAT |
| *18513821 | ##SAF 598 Bando 5175 | | -.004 | +065 |
| | SAV May 7238 | | | |

| \$ | BE PD | WE PD | YE PD | MILK | D | BE PD | WE PD | YE PD | MILK |
|----|-------|-------|-------|------|---|-------|-------|-------|------|
| | -1.2 | +56 | +101 | +35 | | +5.7 | +69 | +107 | +33 |

| \$ | \$W | \$EN | D | \$W | \$EN | BW | 205 |
|----|-----|------|---|-----|------|----|-----|
| | +76 | -2 | | +71 | -21 | 82 | N/A |

This daughter of the Select Sires bull Gaffney Game Changer 371 was produced from a donor dam by the \$400,000 SAV International 2020.

The Pathfinder grandam has produced a multitude of successful progeny including the all-time world record income-producing cow.



SPRINGLAKE AND GUESTS ET FEATURES



SAV BLACKCAP MAY 1234 - Dam of Lots 8-9, 32-33, 43, 64 and 95.

95 Confirmed Unsexed ET Pregnancy

Due Date: 10-10-2020
 #LCC New Standard
 RB Active Duty 010
 #*16718300 +*BA Lady 6807 305
 #SAV Net Worth 4200
 SAV Blackcap May 1234
 *16928558 +*SAV Blackcap May 4136
 #Bon View New Design 1407
 LCC Sunset K3118
 #Vermilion Dateline 7078
 +GD Lady Hi Flyer 302
 #SAV 8180 Traveler 004
 +SAV May 2410
 #SAV 8180 Traveler 004
 #*SAV May 2397

| | | | | | | | | | |
|----|------|------|------|------|----|------|------|------|------|
| \$ | BEPD | WEPD | YEPD | MILK | \$ | BEPD | WEPD | YEPD | MILK |
| | +1.7 | +65 | +116 | +19 | | +5.3 | +73 | +123 | +26 |
| \$ | SW | | SEN | | \$ | SW | | SEN | |
| | +59 | | -27 | | | +64 | | -28 | |

The result of mating the now-deceased RB Active Duty 010 with the featured donor SAV Blackcap May 1234.
 The dam sold one-half interest as the second top-selling cow of the 2019 Graber Sale.
 The grandam is the all-time world record income-producing cow.



COLEMAN LADY 003 - Dam of Lot 96.

96 Confirmed Unsexed ET Pregnancy

Due Date: 10-10-2020
 #RR Rito 707
 Rito 707 of Ideal 3407 7075
 +13066860 Ideal 3407 of 1418 076
 #OCC Emblazon 854E
 Coleman Lady 003
 +16584257 +Bohi Lady 1165
 Rito N Bar
 Eriskay of Rollin Rock 3
 #Ideal 1418 of 8103 4286
 Ideal 076 of 692 8375
 #DHD Traveler 6807
 Dixie Erica of CH 1019
 #*N Bar Emulation EXT
 +Ideal 4465 of 6807 4286

| | | | | | | | | | |
|----|------|------|------|------|----|------|------|------|------|
| \$ | BEPD | WEPD | YEPD | MILK | \$ | BEPD | WEPD | YEPD | MILK |
| | +1.6 | +52 | +90 | +16 | | +1 | +56 | +92 | +19 |
| \$ | SW | | SEN | | \$ | SW | | SEN | |
| | +45 | | +2 | | | +59 | | +4 | |

An embryo mating by the great breeding bull Rito 707 of Ideal 3407 7075.
 The donor dam records a progeny weaning ratio of 110 and a progeny yearling ratio of 105 on two natural calves and she is from the mating of the \$55,000 OCC Emblazon 854E with Bohi Lady 1165 who sold one-half interest for \$170,000 to top the 2010 Coleman Fall Sale and went on to be the top-selling Lot 1 cow of the 2010 Jocko Valley Dispersal where she sold one-half interest for \$55,000.

95R SLA Cee Cee & 7 602

Birth Date: 1-7-2011 Cow #16963936 Tattoo: 1002
 #SAF Connection
 SydGen CC&7
 #*15330743 SydGen Forever Lady 4087
 #RR Rito 707
 Rito 707 of Ideal 3407 602
 +12762322 Ideal 3407 of 1418 076
 #SVF Gdar 216 LTD
 #SAF Royal Queen 5084
 #*SydGen 1407 Corona 2016
 +SAF Forever Lady 8292
 Rito N Bar
 Eriskay of Rollin Rock 3
 #Ideal 1418 of 8103 4286
 Ideal 076 of 692 8375

| | | | | | | | | | |
|----|------|------|-------|------|----|------|------|-------|------|
| \$ | BEPD | WEPD | YEPD | MILK | \$ | BEPD | WEPD | YEPD | MILK |
| | +2.4 | +45 | +83 | +24 | | +4.2 | +53 | +103 | +15 |
| \$ | SW | | SEN | | \$ | SW | | SEN | |
| | +42 | | +1.53 | | | +5 | | -0.25 | |

The registered Angus recipient dam of Lot 95.
 This cow is from an embryo mating by SydGen CC & 7 with a now-deceased SpringLake donor who is a full sister to Rito 707 of Ideal 3407 7075.

96R SLA Barbara 612 [OHP]

Birth Date: 2-12-2016 Cow #18566955 Tattoo: 612
 #RR Rito 707
 SLA AOA Prince 8182 of RR707
 +*17427699 +*Majesty 8182 of 7365 4465
 +Rito 707 of Ideal 3407 7075
 SLA Zaire Bando 775 7103
 15538423 SL Sarah Lee Cupcake 4 FB27
 Rito N Bar
 Eriskay of Rollin Rock 3
 +Ideal 4465 of 6807 4286
 #RR Rito 707
 Ideal 3407 of 1418 076
 Bando 4A15 of 1B1 5C30
 Sarah Lee Cupcake SL3

| | | | | | | | | | |
|----|------|------|-------|------|----|-----|-----|--------|--|
| \$ | BEPD | WEPD | YEPD | MILK | \$ | BW | 205 | | |
| | +3.2 | +36 | +60 | +12 | | 88 | 524 | | |
| \$ | SW | | SEN | | \$ | SW | | SEN | |
| | +14 | | +1.18 | | | +18 | | -0.005 | |

The registered Angus recipient dam of Lot 96.
 This cow records a progeny weaning ratio of 107 on one calf and she is double-bred to RR Rito 707.

97 SLA RM Elba 8969-906

Birth Date: 2-6-2019 Cow Reg.No.Pdg. Tattoo: 906
 #MCC Daybreak
 Quaker Hill Rampage A036
 +*16925771 +*QHF Blackcap 6E2 of 4V16 4355
 #*SAV International 2020
 Linz Elba 8969-5152
 +18837029 +SAV Elba 8969
 #Boyd New Day 8005
 #MCC Miss Focus 134
 Ideal 4355 of 0T26 2440
 *QHF Blackcap 4V16 of 1H8
 #*SAV Harvester 0338
 #*SAV Emblynette 5483
 #SAV Net Worth 4200
 SAV Elba 1094

| | | | | | | | | | |
|----|------|------|------|------|----|------|------|------|------|
| \$ | BEPD | WEPD | YEPD | MILK | \$ | BEPD | WEPD | YEPD | MILK |
| | +2.6 | +82 | +139 | +20 | | +3.2 | +56 | +94 | +27 |
| \$ | SW | | SEN | | \$ | SW | | SEN | |
| | +81 | | -33 | | | +58 | | -10 | |

A feature from the embryo program by the one-time EPD record-breaker Quaker Hill Rampage A036 who led the breed for annual registrations.
 The dam by SAV International 2020 traces to SAV Elba 1094.



SLA RM ELBA 8969-906 - Lot 97

SPRINGLAKE AND GUESTS HEIFERS



FISHER JOYCE F95 - Lot 102

98 **SLA Eline Erica 929** [OHP]
 Birth Date: 3-1-2019 Cow 19655835 Tattoo: 929

| | |
|------|-----|
| CW | N/A |
| MB | N/A |
| RE | N/A |
| FAT | N/A |
| \$W | +34 |
| \$EN | +5 |

| | | | | | |
|------|------|------|------|----|-----|
| BEPD | WEPD | YEPD | MILK | BW | 205 |
| +2.8 | +44 | +70 | +19 | 82 | 475 |

#RR Rito 707
 SLA Rito 707 2X30 1011
 +*17304492 +N Bar Enchantress SCC 2X30

SLA Eline Erica 333
 SLA Eline Erica 783
 18992319 SLA Missy 06 508 587 953

Rito N Bar
 Eriskay of Rollin Rock 3
 #*N Bar Emulation EXT
 +N Bar Enchantress 4908
 +Rito Revolt W2
 SLA Raina 25R Tex 1147
 +*SLA Twister 602 508
 SLA Missy 122R 0 9100 6 587

This granddaughter of RR Rito 707 records an amazing individual weaning ratio of 138 as her dam's first calf.

99 **SLA Blackbird 9152 967**
 Birth Date: 3-23-2019 Cow 19655834 Tattoo: 967

| | |
|------|--------|
| CW | I+23 |
| MB | I+17 |
| RE | I+.22 |
| FAT | I+.003 |
| \$W | +34 |
| \$EN | -2 |

| | | | | | |
|------|------|------|------|----|-----|
| BEPD | WEPD | YEPD | MILK | BW | 205 |
| +3.0 | +40 | +68 | +24 | 85 | 384 |

#RR Rito 707
 SLA RB RR Rito 609
 +*18528039 +*RB Lady Standard 305-077

+*SLA Twister 602 508
 SLA Tahlia 71 771 508 9152
 17012363 +SLA Tahlia 71 771 605

Rito N Bar
 Eriskay of Rollin Rock 3
 #*LCC New Standard
 +*BA Lady 6807 305
 #Da Es Ro Twister 0627
 +Rito 707 of Ideal 3407 602
 #GDAR Traveler 71
 +Rito 707 of Ideal 089 7071

This granddaughter of RR Rito 707 has an individual weaning ratio of 113 from a dam with a progeny weaning ratio of 116 on seven calves.

100 **SLA Excel Pride 273 914** [OHP]
 Birth Date: 2-20-2019 Cow 19655833 Tattoo: 914

| | |
|------|-----|
| CW | N/A |
| MB | N/A |
| RE | N/A |
| FAT | N/A |
| \$W | +24 |
| \$EN | +11 |

| | | | | | |
|------|------|------|------|----|-----|
| BEPD | WEPD | YEPD | MILK | BW | 205 |
| +2.3 | +38 | +61 | +15 | 82 | 481 |

#RR Rito 707
 Rito Revolution W3
 +13203939 Shanigan 652 Ideal 6145 385

+*SLA Twister 602 508
 SLA Excel Pride 273
 17767167 SLA Excel Pride 924

Rito N Bar
 Eriskay of Rollin Rock 3
 Shanigan 385 of Ideal 8152
 Rito 157 of Ideal 558
 #Da Es Ro Twister 0627
 +Rito 707 of Ideal 3407 602
 SLA Harlan 775 H8 728
 Sarah Lee 3 JB SL

This granddaughter of RR Rito 707 has an individual weaning ratio of 122 from a dam with a progeny weaning ratio of 115 on two calves.

101 **SLA Elbina Elba 988** [OHP]
 Birth Date: 4-8-2019 Cow 19668433 Tattoo: 988

| | |
|------|-----|
| CW | N/A |
| MB | N/A |
| RE | N/A |
| FAT | N/A |
| \$W | +13 |
| \$EN | +17 |

| | | | | | |
|-------|------|------|------|----|-----|
| BEPD | WEPD | YEPD | MILK | BW | 205 |
| I+2.2 | I+28 | I+48 | I+15 | 75 | N/A |

SLA Valor 038 224 BM 401 297
 SLA Rito Excel 297 596
 18270843 SLA Blueblood Lady 9135

+*SLA Jetliner 707 602 608
 SLA Elbina Elba 1102
 17177151 Candace Marie

SLA Realm 911 418 267 663
 SLA Valor 038 0010 224 BM
 +SLA Retro 7012 of 9805 771
 SLA Vanessa 0 7071 9106
 #Jetliner 707 of Conanga
 +Rito 707 of Ideal 3407 602
 Rito Big Shot
 Bonnie Rita

An April heifer backed by generations of SpringLake breeding.

102 **Fisher Joyce F95** [OHP]
 Birth Date: 2-28-2019 Cow Reg.No.Pdg. Tattoo: F95

| | |
|------|-------|
| CW | N/A |
| MB | N/A |
| RE | N/A |
| FAT | N/A |
| \$W | +26 |
| \$EN | +0.28 |

| | | | | | | | |
|------|------|------|------|------|------|------|------|
| BEPD | WEPD | YEPD | MILK | BEPD | WEPD | YEPD | MILK |
| +3.1 | +41 | +74 | +19 | +1.9 | +42 | +75 | +16 |
| \$W | \$EN | \$W | \$EN | BW | MILK | | |
| +29 | +10 | +28 | +6 | 84 | 461 | | |

#RR Rito 707
 SLA RR Rito 707 6014
 +*18512528 #Ideal 3625 of 878 1356

SLA Realm 911 418 267 663
 Fisher Joyce F51
 19324882 Fisher Joyce F310

Rito N Bar
 Eriskay of Rollin Rock 3
 #Bon View New Design 878
 +Ideal 1356 of 6442 4465
 SLA C PR 7118 911 418
 SLA Rito 4H T011 907 267
 Fisher Elmer 2191 775 F74
 Fisher Joyce 010 241 F73

A granddaughter of RR Rito 707 from a dam who records a progeny weaning ratio of 123 on one calf.

103 **Fisher Jillian F91**
 Birth Date: 2-17-2019 Cow Reg.No.Pdg. Tattoo: F91

| | |
|------|-------|
| CW | I+22 |
| MB | I+18 |
| RE | I+.22 |
| FAT | I+.22 |
| \$W | +26 |
| \$EN | +0.28 |

| | | | | | | | |
|------|------|------|------|------|------|------|------|
| BEPD | WEPD | YEPD | MILK | BEPD | WEPD | YEPD | MILK |
| +3.1 | +41 | +74 | +19 | +1.9 | +38 | +67 | +20 |
| \$W | \$EN | \$W | \$EN | BW | MILK | | |
| +29 | +10 | +32 | +7 | 86 | 466 | | |

#RR Rito 707
 SLA RR Rito 707 6014
 +*18512528 #Ideal 3625 of 878 1356

+*SLA Da Es Ro Twister 602 801
 Fisher Jillian F25
 19324884 Fisher Jillian 005 F42 F601

Rito N Bar
 Eriskay of Rollin Rock 3
 #Bon View New Design 878
 +Ideal 1356 of 6442 4465
 #Da Es Ro Twister 0627
 +Rito 707 of Ideal 3407 602
 Connealy Mayor 898
 Fisher Jillian 005 K21 F42

This granddaughter of RR Rito 707 is from a dam with a progeny weaning ratio of 117 on one calf.

104 **Fisher Jillian F93** [OHP]
 Birth Date: 2-21-2019 Cow Reg.No.Pdg. Tattoo: F93

| | |
|------|-------|
| CW | N/A |
| MB | N/A |
| RE | N/A |
| FAT | N/A |
| \$W | +26 |
| \$EN | +0.28 |

| | | | | | | | |
|------|------|------|------|------|------|------|------|
| BEPD | WEPD | YEPD | MILK | BEPD | WEPD | YEPD | MILK |
| +3.1 | +41 | +74 | +19 | +1.2 | +30 | +54 | +19 |
| \$W | \$EN | \$W | \$EN | BW | MILK | | |
| +29 | +10 | +22 | +13 | 84 | 461 | | |

#RR Rito 707
 SLA RR Rito 707 6014
 +*18512528 #Ideal 3625 of 878 1356

SLA Comic W05 of Cedric W417
 Fisher Jillian F49
 19325919 Fisher Jillian F93

Rito N Bar
 Eriskay of Rollin Rock 3
 #Bon View New Design 878
 +Ideal 1356 of 6442 4465
 Cedric of Wye UMF 8998
 SLA Darby W417 of W07 W813
 SLA C PR 7118 911 418
 Fisher Jillian 005 K21 F42

This granddaughter of RR Rito 707 is from a dam with a progeny weaning ratio of 117 on one calf.

105 **Fisher Elaine F98** [OHP]
 Birth Date: 3-19-2019 Cow 19668872 Tattoo: F98

| | |
|------|--------|
| CW | I+16 |
| MB | I+19 |
| RE | I+.12 |
| FAT | I+.020 |
| \$W | +21 |
| \$EN | +14 |

| | | | | | | | |
|------|------|------|------|------|------|------|------|
| BEPD | WEPD | YEPD | MILK | BEPD | WEPD | YEPD | MILK |
| +2.3 | +38 | +61 | +15 | +1.8 | +30 | +52 | +19 |

#RR Rito 707
 SLA BG Rito 707
 +*17427713 +*Sinclair Lady 5ET3 4465

+Ideal 443 of Shadow 4465 DGT
 Fisher Elaine F34
 18349274 SLA Elaine 038 224 241 F558

Rito N Bar
 Eriskay of Rollin Rock 3
 #N Bar Explosion TNT
 +Ideal 4465 of 6807 4286
 N Bar Shadow X4124
 +Ideal 4465 of 6807 4286
 SLA Excel 6H 87 241
 SLA Valor 038 0010 224

This granddaughter of RR Rito 707 is from a dam with a progeny weaning ratio of 104 on two calves.

Thanks for attending
 this sale.

Our cuts are everything you can think of. We have ribeyes, t-bones, sirloins, fillets, New York strips, minute steaks, roasts and of course ground hamburger. We sell everything by the pound.

Hamburger - \$4.50/lb



T-Bones - \$9.50/lb



Roasts - \$4.50/lb



New York Strip - \$9.50/lb



Ribeyes - \$9.50/lb



Minute Steaks - \$4.50/lb



Sirloins - \$9.50/lb



Pick what you want and order by the box or buy in bulk! We are selling whole, halves, or quarters of a beef for \$5.25/lb. The total price depends on the weight of the animal. For example, a quarter of processed beef can weigh 80 to 90 pounds. With a quarter you get approximately 6-8 ribeyes, 6-8 t-bones, 3-4 sirloins, 16-18 minute steaks, 3 chuck roasts, 2 arm roasts, 1 sirloin tip roast, 1 rump roast, and 30-50 pounds of hamburger. We are also willing to switch pieces out best to our capabilities if you would like more or less of a certain cut. This type of order would cost approximately \$400 to \$500.

To order:

call (402) 569-3442,
 call or text (402) 394-1880,
 call or text (402) 336-7873,
 email sprnglake@threeriver.net or sprnglakearts@gmail.com,
 or find us on Facebook <https://www.facebook.com/SpringLake.Angus/>
 or our website www.springlakeangus.com

Why buy SpringLake Angus beef?

A buyer's guide to beef products.





Sale Managers
TOM BURKE, KURT SCHAFF, JEREMY HAAG

AMERICAN ANGUS HALL OF FAME
at the WORLD ANGUS HEADQUARTERS
Box 660, Smithville, MO 64089-0660.
Phone: (816) 532-0811
Fax: (816) 532-0851
E-mail angushall@angushall.com
www.angushall.com

PSRT
FIRST-CLASS
U.S. POSTAGE
PAID
St. Joseph, MO
Permit #2017

SPRINGLAKE ANGUS BEEF



SPRINGLAKE ANGUS BEEF FOR SALE
USDA INSPECTED, ALL NATURAL, DRUG AND HORMONE FREE, PASTURE TO PLATE.