



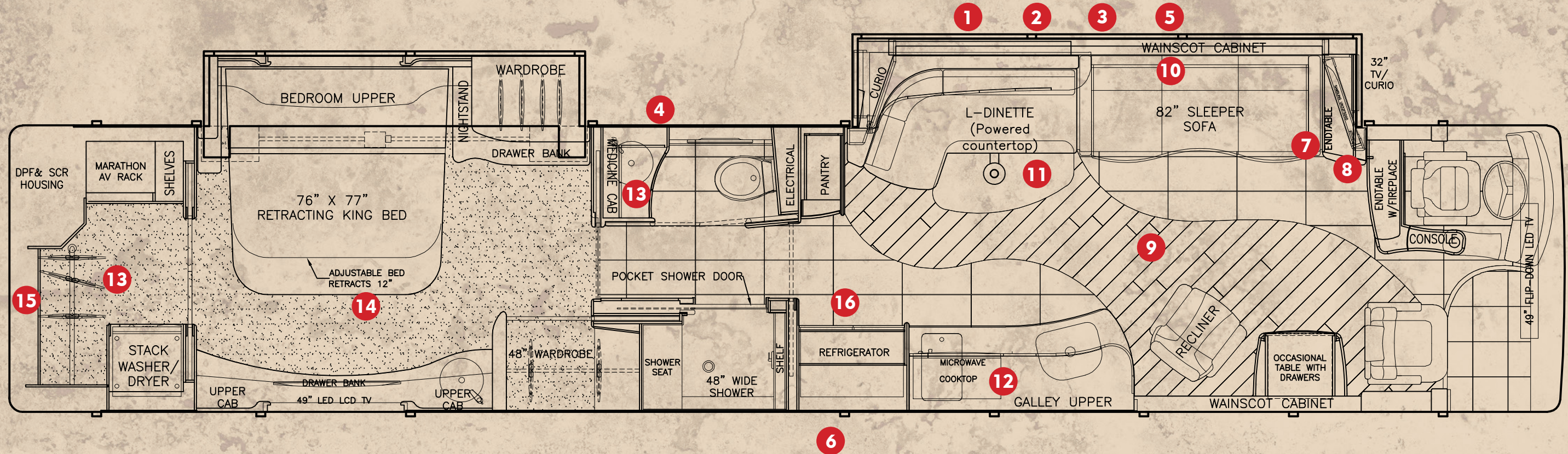
# 2019 SHOW COACH #1285

PREVOST | X3-45 | DOUBLE SLIDE





# Marathon's New Floor Plan



## 1 Paint

- One of a kind per coach.
- 8 to 10 coats of clear.
- Cut and buff finish.
- Special effects including: soft shadows, blends, candy, pearls, textures and more.

## 2 90 ft of Girard Nova Awnings

- ### 3 20K generator
- Sound proofing.
  - Air bag mounts.
  - Easy roll out access.

## 4 Plumbing Bay

- Water manifold with control over each fixture.

- One water line between the fixture and manifold to reduce the chance of leaks.
- Crestron interface for monitoring tank levels.
- Freedom Plus Sewer System.

## 5 Wiring

- Designed by a team of engineers.
- Labeled Wago aircraft style wiring connections.
- Complete wiring diagrams.
- To code and beyond.
- Access at all wiring junctions.
- Every wire labeled at both ends.

## 6 Entertainment bay

- 4K TV.
- Sound bar with subwoofer.

- Motorized mount.

## 7 Crestron

- iPad interface.
- Magnetic iPad mounts.
- Control over: HVAC, audio/video, blinds, lights, tank levels, power levels and more.
- Remote access through smart phone app.
- Fully customizable.

## 8 Audio/Video

- 4K system.
- Two satellite dishes with three receivers.
- Top rated components.
- Fully engineered system.
- Commercial grade WiFi.

## 9 Flooring

- Under floor heating.
- Solid Eucalyptus Wood Planking throughout coach.
- Stone Inlay in Salon.

## 10 Sofa

- Custom built in-house.
- Choice of standard, pull-out bed or air mattress.
- Choice of 2 different backings.

## 11 Dinette

- Hidden storage.
- Motorized table top.
- Leatherette table top to prevent dish sliding

## 12 Galley

- Dishdrawer.
- 2 point connection on all fixtures.
- Sub-Zero fridge.
- Fisher Paykel Microwave.

## 13 Bathrooms

- Handmade glass sinks.
- Larger shower.
- Pocket shower door.
- Privacy glass in bedroom.

## 14 Bedroom

- Folding bed that also retracts.
- Custom mattress.
- Custom bedding.

## 15 Wiring

- Designed by a team of engineers.
- Labeled Wago, cage clamp technology, aircraft style wiring connections.
- Complete wiring diagrams.
- To code and beyond.
- Access at all wiring junctions.
- Every wire labeled at both ends.

## 16 Appliance Cabinet

- Miele Coffee/Esspresso Center
- Multi-functional Speed Oven
- Wine Cooler
- Pantry Storage







# 2019 Marathon Coach #1285

PREVOST X3-45 DOUBLE SLIDE

**RETAIL: \$2,143,766**

- Marble with Wood Plank in Wave Design
- Solid Surface Bayside Edge Treatment (Contrasting Color)
- Deluxe Decor Package for Interior
- 49" Samsung 4K LED TV in Bedroom
- Pop-up GPS dash monitor
- Under Floor Heating System under Marble
- Fireplace Insert in Salon

## CHASSIS SPECIFICATIONS

- Volvo D13 500HP engine
- 304 Surgical grade stainless steel construction
- Fully integrated structure including walls, ceiling, front and back
- Allison 4000MHR transmission
- Transmission retarder
- Volvo (D.I.D.) driver information display controls
- Driver's air conditioning
- Thermopane windows
- Valid manufacturing slide-outs
- Electronic stability program
- Xenon low beam headlamps
- Tire pressure monitoring system with LED dash display
- Trueline auto leveling system
- 89" coach interior height (X3-45)
- Side view mirrors with integrated turn signals

## WINDOW TREATMENTS

- Cockpit window treatments
  - Electric front windshield, driver and entrance door
  - Pleated privacy shades with remote control
- Salon/dinette window treatments with remote control
  - Electric window coverings
  - Designer choice window valance treatments
  - Solid surface window sills
- Bedroom window treatments with remote control
  - Electric window coverings
  - Designer choice window valance treatments
  - Solid surface window sills

## CABINETRY/FINISH SPECIFICATIONS

- Galley and dinette upper display cabinets with acrylic fronts, mirror interiors, and LED lighting: Floorplan specific
- Laminated, fabric lined cabinets with radius bends throughout interior
- Headerless air powered style pocket doors
- Bamboo, dovetail drawer boxes throughout

## COCKPIT SPECIFICATIONS

- Deep lacquer instrument dash panels and leather wrapped dash
- Entry storage step
- Stone or porcelain entry and landing
- Polished stainless sidewalls
- Custom dash matching handrails
- Wood and leather steering wheel with cruise, retarder and blind controls
- New motorized co-pilot seat footrest/platform

## FLOOR COVERING

- Multiple flooring options and patterns available
  - Material selections include: Stone, wood planking, porcelain tile and carpet
  - Under-floor radiant heating for stone and porcelain tile flooring

## FURNITURE

- ISRI leather pilot seat with air suspension and three point seat belt
- 28" wide leather co-pilot seat
- Massage units in pilot and co-pilot seats
- Custom built sleeper sofas by Marathon
- King size bed standard on all floorplans including:
  - Motorized slide/tilt mechanism for 12"

- additional aisleway and enhanced TV viewing
  - Laminated latex king size mattress
- Updated L-shaped dinette with "hidden" seat back storage

## INTERIOR LIGHTING

- Flush 12V LED spotlighting with accent matched frames
- Master light switches at entrance and bedroom
- Soft start fade on/off lighting control
- RGB infinite color LED ceiling accent lighting
- Warm white LED counter top accent lighting throughout

## APPLIANCES

- Electric cook top with cover
- GE Advantium Speedcook microwave/convection oven
- 15 cubic foot refrigerator with automatic travel lock
- "Dishdrawer" dishwasher with automatic travel lock
- Pre-wired, pre-plumbed and pre-vented for stacked washer/dryer

## EXTERIOR SPECIFICATIONS

- Custom design paint scheme including seven to 10 layers of clear coat
- Automatic awnings with custom roof caps
- Two curbside LED patio lights
- Custom polished stainless steel trim package on rear engine door
- Polished stainless steel rub rails and custom front grill



### **UNDERBELLY, UTILITY AND ENGINE BAYS**

- Euro/American car tow package
- Entertainment center with motorized swing-out, 4K ultra high definition TV
- 120V air compressor
- Four Zip Dee folding chairs in custom holder

### **AIR CONDITIONING/HEATING**

- Four 15,000 BTU roof air conditioning/heat pump systems, with heat strips, thermostatically controlled and hidden vent system
- Diesel fired 55,000 BTU furnace (hydronic system) with four heat exchangers
- Four 120V AC electric heaters with remote thermostats
- Marathon climate control system

### **POWER MANAGEMENT**

- 20KW turbo-charged generator on a roll-out with pressure regulated air bag mounts
- Two 4,000W, 24V inverter/chargers
- House battery system includes six 4D house batteries and one isolated group 24 generator battery
- "Auto-gen" battery charging system
- Three 24V/150Amp alternators. One for chassis and two for house battery charging
- Battery charger in engine bay. Maintains chassis batteries during long term storage
- Electric shore cord reel with remote, 50-amp power cord
- Internal "Jump Start" capabilities between house and chassis batteries

### **ELECTRICAL**

- TechLink® "intelligent" electrical system with integrated modem for remote diagnostic service capability

- Solid core conductor wire for 120V system
- LED blown fuse indicators

### **AUDIO/VIDEO**

- AM/FM tuner with station and band information displayed on Crestron screens
- Stationary satellite antenna system with two DirecTV HD receivers; one with DVR
- Surround sound speaker system with sub woofer
- 4K ultra high definition LED TVs throughout: 49" in salon, 49" in bedroom, 49" in bay
- Two Blu-ray DVD/CD players
- In-motion satellite antenna system with one DirecTV receiver
- HDMI digital media switcher capable of handling 4K ultra high definition signals
- Crestron AV control system with three Apple iPads. Includes lighting, shades and climate controls
- Smart phone control of coach resources
- XM/Sirius satellite radio tuner with song/artist information on Crestron screens
- Marathon's exclusive "theater" button for one touch control of lights, blinds and AV equipment

### **COMMUNICATION/ INFORMATION SYSTEMS**

- Garmin, voice prompted GPS mapping system with pilot touch screen control
- TechLink® status screens displayed on Crestron panels
- Burglar alarm with two remote key fob activators including motorized deadbolt operation
- Power loss indicators, smoke and CO detectors
- Rear and side view cameras
- 9" dash mounted Crestron touch screen for AV, camera and coach system control

and display

- Web based smart phone (iPhone only) remote control of select coach features and viewing of interior camera

### **PLUMBING**

- Two, 10.5 gallon water heaters with two heat sources and plumbed in series
- Seamless, non-corroding, polyethylene water and holding tanks with electric black and grey dump valves and Freedom Plus® automatic sewer system
- Temperature sensing shower mixer valve
- Two high output 12V water pumps

### **CEILING STYLES**

- Salon/galley/bedroom "tiered" style ceilings with LED color wash accent lighting
- Multiple ceiling patterns available
- Sculpted, overlaid, vinyl or leatherette (for easy cleaning) wrapped panels with backlit LED panels
- Multiple ceiling lighting options available

### **MISCELLANEOUS**

- Toll free 800 number for after hours service information
- Exclusive Marathon Coach Club membership
- Bumper-to-bumper two-year full warranty
- New "frameless" glass shower doors with residential grade, accent matching hardware
- Marathon exclusive artisan glass vanity sinks in multiple patterns and colors
- Pre-connected 50 foot fresh water hose on motorized reel
- Fresh water "auto-fill" system

**Marathon Coach Oregon**  
**800-234-9991**

**Marathon Coach Texas**  
**800-448-8881**

**Marathon Coach Florida**  
**800-437-8295**

[www.marathoncoach.com](http://www.marathoncoach.com)