



SAMFORD

SORORITY LIFE

PURPOSEFUL • FAITHFUL • REAL



SORORITY LIFE AT SAMFORD IS LIKE NO OTHER COMMUNITY. SORORITIES & FRATERNITIES AT SAMFORD ARE PURPOSEFUL — WE SERVE OUR COMMUNITY & GIVE TO RIGHTEOUS CAUSES BECAUSE THAT'S WHAT SAMFORD IS ABOUT.

CONTENTS

- 3** Welcome
- 4** Sorority Life at Samford
- 5** Financial Information
- 7** Recruitment Info
- 11** 9 Things We Wish We Would Have Known
- 12** What to Expect
- 13** Executive Board
- 14** Rho Gammas
- 14** Potential New Member Bill of Rights
- 15** Greek Speak
- 16** Letters of Recommendation
- 17** Recruitment Week
- 19** Meet Our Chapters
- 25** Notes



WELCOME

We are so excited you decided to go through Panhellenic Recruitment! Sorority life at Samford means finding a community that fosters growth in all areas of your life. Through sorority life you have the opportunity to be involved in philanthropy events, sisterhood activities, socials and campus events like Step Sing and Homecoming. We encourage you to go through this process with an open mind and a positive attitude. We truly hope you enjoy this experience!

**Sincerely,
Samford University Panhellenic Executive Board**



SORORITY LIFE AT SAMFORD

The sorority and fraternity community at Samford University is made up of 15 registered sororities and fraternities organized within three governing councils. Forty-five percent of the undergraduate student body is Greek at Samford. Joining a Panhellenic sorority will allow you to be a part of this larger community that is strongly connected to Samford and the Birmingham community.

National Panhellenic Conference

The National Panhellenic Conference (NPC) was created in 1902 to promote sorority unity. Today there are 25 national fraternal organizations affiliated with NPC which are represented across the United States and Canada.

When you join one of the seven NPC sororities at Samford, you also become a member of the Panhellenic Council that has over 1,000 members making us the largest women's organization on campus! Panhellenic is the serving and governing body for the six NPC sororities as well as one associate sorority, Delta Xi Phi, Multicultural Sorority, Inc. Panhellenic promotes equality and establishes guidelines governing membership recruitment, social activities, publicity, and member responsibilities.

SORORITY CHAPTERS

- + Alpha Delta Pi
- + Alpha Omicron Pi
- + Chi Omega
- + Delta Delta Delta (Colonizing Fall 2016)
- + Delta Xi Phi Multicultural Sorority, Inc.
- + Phi Mu
- + Zeta Tau Alpha

FALL 2015 CHAPTER GPAS

- + All Panhellenic New Members: 3.45
- + Greek Women: 3.37
- + All University Women: 3.34
- + All University: 3.22



+ FINANCIAL INFORMATION

Chapter fees fund various activities and events of the organization such as academic programs, socials, service events, national dues, and lifetime membership. The ranges provided include dues to the local chapter and to the national sorority headquarters.



REQUIRED FEES

- + New Member Fall Semester **\$725.00 / \$850.00**
- + New Member Spring Semester **\$400.00 / \$600.00**
- + Active Member Fall & Spring **\$500.00 / \$700.00**
- + Semesterly Fee to Samford Greek Life **\$75.00**

ADDITIONAL FEES

Additional costs throughout the semester may include:

- + T-shirts
- + Social Events
- + Gifts, Merchandise

Please note when you become a new member of a sorority, you are affiliating with the national organization. If at any time you decide to disaffiliate or relinquish your membership, you may still be held responsible for fees or payments required to fulfill your contract with the organization.

During formal recruitment, a potential member should ask sorority members about financial obligations and payment options. Scholarships are provided through the national headquarters or foundation. Seek detailed information on the national website to learn more. Each sorority sets its own fees and payment schedule.



RECRUITMENT INFO

Formal recruitment involves 5 National Panhellenic Conference sororities at Samford. A woman is eligible to participate in recruitment and join a sorority if she is enrolled at the university and has been granted full-time status. She must not be a new member or initiated member of any other National Panhellenic Conference sorority.



ABOUT RECRUITMENT

Visit www.samford.edu/greeklife/recruitment to register online and upload your resume, photo, and unofficial transcript. Pay the \$100.00 registration fee before August 1st online or the registration fee will increase to \$125.00. The payment process is the very last step of the online registration form. Mail in checks are not accepted.

REGISTRATION TIMELINE

1. \$100.00 if paid online by 11:59pm on July 31
2. \$125.00 if paid online by 11:59pm on August 31
3. Registration ends at 11:59pm on August 31

RECRUITMENT AT A GLANCE

May 1 - Registration opens

August 1 - Registration increases from \$100.00 to \$125.00

August 29 - First day of classes

August 31 - Recruitment 101 (Required)

August 31 - Registration closes at 11:59pm

September 6 & 7 - Philanthropy Round

September 8 & 9 - Sisterhood Round

September 10 - Preference Round

September 11 - Bid Day



RECRUITMENT INFO

**+ REGISTER FOR
RECRUITMENT
AT SAMFORD.
EDU/GREEKLIFE/
RECRUITMENT**

**+ ATTEND
RECRUITMENT
101 ON
AUGUST 31**

MEETINGS WITH RECRUITMENT GUIDES

For each round of recruitment you will begin your day by meeting with your recruitment guide group. This is the time when you will receive your schedule of the day. Due to time limitations, it may be advisable for you to dress for the recruitment events prior to attending this meeting. Your Rho Gamma will communicate what is best for you.

CHAPTER SELECTION

After you have attended all of the events on your schedule, you will participate in chapter selection. This process should be completed immediately after your last event without making any stops to change clothes or make phone calls. You will use this time to select the chapter(s) you would like to visit again the next day. This selection will be submitted on a computer in a nearby computer lab after which you may return to your residence hall.

RECRUITMENT CONTACT & SILENCE POLICIES

Panhellenic has strict policies throughout the summer which restrict contacting and being contacted by women currently in sororities at Samford. The following rules apply to any female interested in joining a Panhellenic sorority.

- + Potential new members (PNMs) may not attend any organized sorority function outside of formal recruitment events.
- + No oral or written invitations can be made to potential new members by a sorority member or representative (alumnae or other) to attend any activity or social function. However, contact can be made with an alumnae in regards to seeking a recommendation letter.
- + PNMs may not be contacted in any way by active or alumnae members. This includes telephone calls, letters, Facebook messages, snapchats, and any other social media communication. No gifts of any kind should be exchanged.
- + PNMs are not allowed to be present at any fraternity activities throughout the summer.
- + Attendance at fraternity parties is not allowed during recruitment in August.

Strict silence is enforced between the time of the last preference event on Saturday, September 10 until the end of Bid Day on Sunday, September 11. Any contact made between a sorority member (active or alumnae) is strictly forbidden and will lead to dismissal from the recruitment process.



9 THINGS

We Wish We Would Have Known Going Through Recruitment

- + Not everyone has the perfect schedule.
- + Each day is a new day. The chapter you loved one day might not be your favorite the next. Just because you didn't enjoy a chapter at the beginning of the week doesn't mean you should rule them out completely. There is a reason they still want you to attend events!
- + The chapter women are just as nervous about talking to you as you are about talking to them.
- + Don't prepare your answers. You'll rush your responses and will have less to say. Thinking on the fly allows for more genuine conversations.
- + Look for the women who share similar values as you, not the women you want to be like.
- + Stay true to yourself. The harder you try to be like the women in the chapter event you are attending, the harder it will be for you to find your fit.
- + Dress in what makes you feel comfortable. Don't try to wear a new outfit, shoes, or hairdo the day of an event. The more confident you are in your appearance, the more your genuine personality will shine through.
- + Wear comfortable shoes, bring a hair tie, and know you will sweat a little, but remember that everyone is in the same boat.
- + Throughout this whole process, remember this is YOUR recruitment and YOUR decision—not your mom's, sister's, aunt's, roommate's, or anyone else's choice. Sometimes it is okay to turn off your phone.



WHAT TO EXPECT

As A New Member

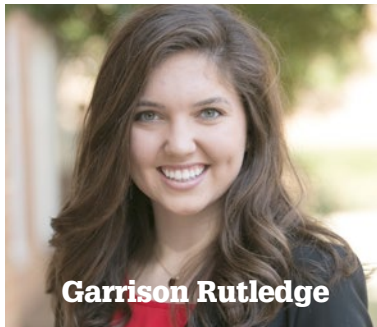
As a new member, your first year will be geared toward getting acclimated with your sorority and Samford. After Bid Day, you will be required to attend regular new member meetings until your initiation. Each chapter has a different program specifically designed for the new members. The meetings will educate you about the history, tradition and rituals of your chapter. The meetings will be led by a new member educator, a woman in the chapter whose responsibility is to guide you through your new member education and initiation.

Your chapter may host a new member retreat, which will give you an opportunity to bond with your new member class. In addition, some chapters will invite you over for meals throughout the week to get to know current members of the chapter. Often, the chapters will invite you immediately to attend regular events such as social functions, philanthropies, Panhellenic-sponsored events, and community engagement opportunities.

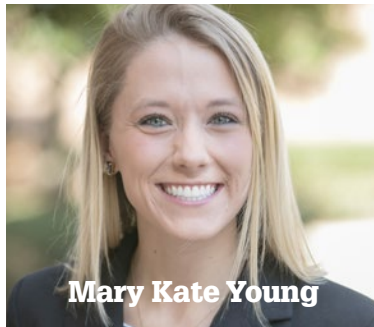


PANHELLENIC EXECUTIVE BOARD

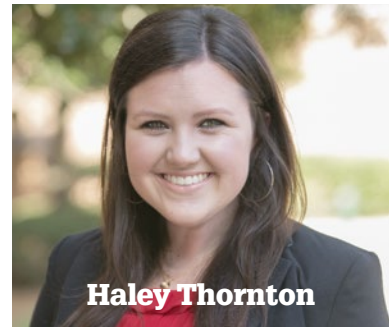
Samford University Panhellenic Executive Board is comprised of 6 women from different chapters in the campus community. Each woman is elected to perform a specific job enhancing the community as a whole. Samford Panhellenic keeps sorority members informed of upcoming events and fosters relationships with women in different organizations through weekly council meetings. The Panhellenic Council Executive Board also strives to create and maintain relationships with the two other Greek councils on campus.



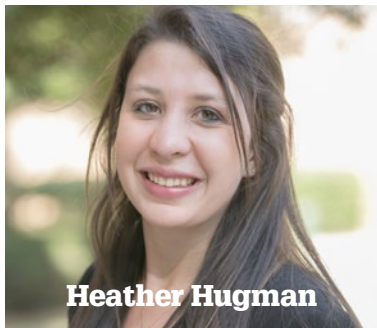
Garrison Rutledge



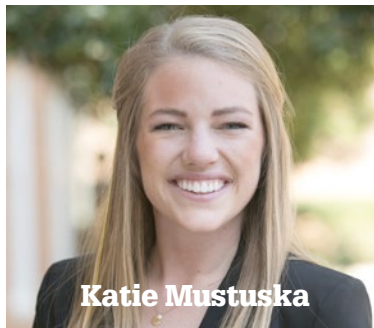
Mary Kate Young



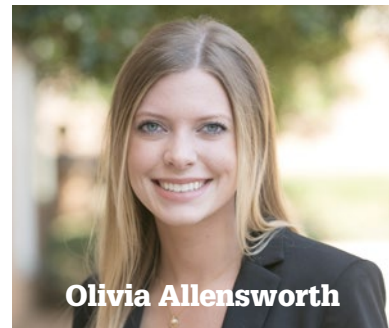
Haley Thornton



Heather Hugman



Katie Mustuska

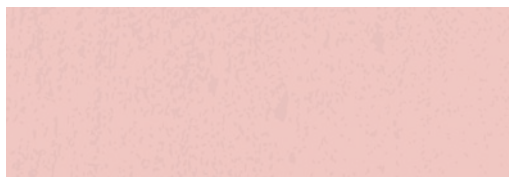


Olivia Allensworth

RHO GAMMAS

Women participating in formal recruitment will be assigned to a recruitment group led by two recruitment guides. Recruitment guides are women from the Greek community who disaffiliate from their chapters during recruitment week to help potential new members navigate recruitment. They will not be able to reveal their sorority membership. Since the recruitment guides are disaffiliated these women will be able to answer any questions you may have throughout the week of recruitment in order to help you decide which sorority is the best fit for you. These women went through a competitive application and interview process and were selected for their leadership abilities, peer counseling skills and enthusiasm for the recruitment process. Our amazing recruitment guides dedicate their recruitment week to be your listener, guide, and friend.

My Rho Gammas' names and cell phone numbers



Potential New Member Bill of Rights

- 1 The right to ask questions and receive true objective answers from Rho Gammas and sorority members.
- 2 The right to have and express opinions to recruitment guides.
- 3 The right to have unbreakable confidentiality when sharing information with recruitment guides.
- 4 The right to make one's own choices and decisions and accept full responsibility for the results of the decision.
- 5 The right to have a positive, safe, and enriching recruitment and new member experience.

If at any time you feel you are not being treated according to the bill of rights stated above, contact your rho gamma. With your permission, your rho gamma will inform the Panhellenic Council of the issue and take immediate and appropriate action to rectify the situation.

GREEK SPEAK

ACTIVE: a woman who has been formally initiated by her sorority.

ALUMNA: a sorority member who graduated and is no longer an active member of a collegiate chapter.

BID: an invitation to join a sorority.

BID DAY: the last day of recruitment, when potential new members receive bids to join chapters and become new members.

CHAPTER: a local membership unit of a sorority.

COB (Continuous Open Bidding): an informal membership recruitment process during which bids may be extended and accepted at any time during the school year other than during primary recruitment. However not all chapters participate in COB.

IFC (Interfraternity Council): the governing body of 5 for men's fraternities at Samford, most of which are part of the North American Interfraternity Conference.

LEGACY: a prospective member whose relative is an initiated member of a sorority (different NPC organizations vary in defining which relationships confer legacy status).

MRABA (Membership Recruitment Acceptance Binding Agreement): a document from NPC signed by a PNM immediately following preference rounds, which states her membership preferences in descending order. This binding agreement states the PNM would be willing to accept a bid from any sorority she lists on her preference card, and will not be eligible to accept a bid from another chapter until the next formal recruitment period.

NPC (National Panhellenic Conference): an organization composed of 26 national and international women's fraternities, of which 6 have chapters at Samford.

NPHC (National Pan-Hellenic Council): the governing body of the nine historically African-American fraternities and sororities, three of which have chapters at Samford.

PHILANTHROPY: an event or program where participants raise money for an organization.

PNM (Potential New Member): a woman participating in the sorority recruitment process (you!).

LETTERS OF RECOMMENDATION

Recommendations are letters or statements from a sorority alumna recommending a potential new member for membership. The alumna member will provide a brief description of the prospective member and explain why that woman would be an asset to the specific chapter. It is also important to note that a recommendation does not guarantee a potential new member an invitation to events during recruitment week, nor does it guarantee membership in that sorority.

Samford University has 5 nationally-recognized NPC-affiliated sororities participating in fall 2016 formal recruitment and one new sorority colonizing this fall. The recommendation process varies among the sororities, but alumnae will be familiar with their own sorority's requirements. While it is common to send multiple recommendations to one sorority from separate alumnae, it is unnecessary to exceed more than two. Letters of recommendation are not required to participate in fall formal recruitment, however, some chapters do find it helpful in getting to know a woman. While it is not required, the Panhellenic Council encourages you to get one for each sorority.

Although there is no official deadline for when letters of recommendation must be received, all alumnae are encouraged to mail them directly to the addresses below no later than August 15 to ensure that they are received prior to the start of recruitment.

STEP 1: HOW DO I CONTACT AN ALUMNA?

The easiest way to contact an alumna to write you a letter is to start asking among your friends and family. Ask your neighbors, your friends' mothers, your mother's friends, and your teachers at school. If they are not members of a sorority, they may be able to put you in contact with someone who is.

Another option is to contact an Alumnae Panhellenic Association in your area for assistance with securing a recommendation. The alumnae member writing the letter should know her sorority's forms are available through the national office and website.

STEP 2: MAILING

The alumna writing your recommendation letter should mail it directly to Samford's Greek Life Office at the address listed below

**Office of Greek Life
Attention: Sorority Name
800 Lakeshore Drive
Birmingham, AL 35229**



RECRUITMENT WEEK **Round by Round**

RECRUITMENT 101

Wednesday, August 31, 6 p.m., Reid Chapel

What happens: This is the time where you will meet your rho gamma and the panhellenic recruitment team. All information about the entire week's schedule will be covered and you will receive your t-shirt to wear for philanthropy round. Each consecutive day will begin with meeting your rho gamma at your designated location to review your daily schedule. Your rho gammas will provide your schedule to you each day and thoroughly communicate what you need to know.

What to wear: Casual attire on August 31. As the week continues you will want to dress for your recruitment events prior to your meeting with rho gamma.

PHILANTHROPY ROUND

Tuesday, September 6 and Wednesday, September 7

Event Length: 30 minutes each

What happens: This round of events focuses on each sorority's community service and philanthropy. You may attend all six sororities, including Delta Delta Delta. At each chapter you will visit, you will watch a philanthropy video and learn more about how to give back as a sorority woman. Chapters will provide information about their philanthropic events and community service partnerships.

What to wear: Grey recruitment t-shirts (given out at Recruitment 101), shorts and comfortable flats or sandals are suggested.

SISTERHOOD ROUND

Thursday, September 7 and Friday, September 8 | Event length: 40 minutes each

What happens: This round of events focuses on each sorority's sisterhood. You may attend a maximum of four events during this round. At each chapter you visit, a sisterhood video will be shown and you will have the opportunity to learn more about everyday life in the sorority. Chapters will provide information about social, sisterhood, and other events held throughout the year.

What to wear: Comfortable day time dress or skirt, comfortable sandals, wedges, or flats. NO denim or flip flops.

PREFERENCE ROUND

Saturday, September 10 | Event Length: 50 minutes each

What happens: This round is the most formal and personal round throughout the recruitment process. You may attend up to two events this day. This round focuses on the core values of sorority life, including sisterhood, friendship, and ritual. This is your last opportunity to interact with chapter members.

What to wear: Attire is a dressier than daytime dresses but not a cocktail or formal. Choose something that shows your personality if you were having a fun ladies night out.

BID DAY

Sunday, September 11 | Start Time: 4 p.m.

What happens: All potential new members who have received a membership invitation will gather in the Reid Center to receive their sorority bid. Then the chapters, rho gammas, and new members will unite on the quad. New members are invited back to the sorority house to participate in fun activities and group photos taken in front of each house. Bid day activities vary by chapter.

What to wear: Comfortable shorts and sandals or flats.



ALPHA DELTA PI

Kappa Chapter

Nickname: A-D-Pi

National Website: alphadeltapi.org

Local Website: samfordadpi.com

Founded: May 15, 1851 Wesleyan
Female College, Macon, GA

Samford Founded: 1910

New Member Program: 10 weeks

Mascot: Lion

Flower: Woodland Violet

Symbol: Diamond

Colors: Azure Blue & White

Motto: We live for each other

Philanthropy:

The Ronald McDonald House

Facebook: ADPiSamford

Twitter: @ADPiSamford

Instagram: @ADPiSamford



ALPHA OMICRON PI

Rho Delta Chapter

Nickname: A-O-Pi

National Website: alphaomicronpi.org

Local Website: samfordaoii.wix.com/samfordaoii

Founded: January 2, 1897 Barnard College,
New York, NY

Samford Founded: 1995

New Member Program: 6 weeks

Mascot: Panda

Flower: Red Rose

Symbol: Sheaf

Color: Cardinal

Motto: Exceed the Expectation

Philanthropy: Childhood Arthritis

Facebook: AOIIRhoDelta

Twitter: @SamfordAOII

Instagram: @SamfordAOII





CHI OMEGA

Zeta Zeta Chapter

Nickname: Chi-O

National Website: chiomega.com

Local Website: chiomegazetazeta.com

Founded: April 5, 1895 University of Arkansas, Fayetteville, AR

Samford Founded: Zeta Zeta Chapter, 1963

New Member Program: 10 weeks

Mascot: Owl

Flower: White Carnation

Symbol: Skull & Crossbones

Colors: Cardinal & Straw

Motto: Hellenic Culture & Christian Ideals

Philanthropy: Make a Wish Foundation

Facebook: [ChiOmegaZetaZeta](https://www.facebook.com/ChiOmegaZetaZeta)

Twitter: [@ChiOmega_ZZ](https://twitter.com/ChiOmega_ZZ)

Instagram: [@chiomega_zz](https://www.instagram.com/chiomega_zz)



DELTA DELTA DELTA

Epsilon Xi Chapter

Nickname: Tri Delt(a)

National Website: www.tridelta.org

Local Website: www.samford.tridelta.org

Founded: November 27, 1888 Boston University, Boston, MA

Samford Founded: Fall 2016

New Member Program: 8 weeks

Mascot: Dolphin

Flower: Pansy

Symbol: Trident, Pearl, Pine Tree

Colors: Silver, Gold, and Blue

Motto: Let us steadfastly love one another

Philanthropy: St. Jude's Children's Research Hospital

Facebook: SamfordTriDelta

Instagram: @samfordtridelta

Twitter: @SamfordTriDelta

COMING TO
CAMPUS
THIS FALL



PHI MU

Alpha Gamma Chapter

Nickname: Phi Mu

National Website: phimu.org

Local Website: samford.phimu.org

Founded: March 4, 1852 Wesleyan
Female College, Macon, GA

Samford Founded: 1924

New Member Program: 8 weeks

Mascot: Lion

Flower: Rose Carnation

Symbol: Quatrefoil

Colors: Rose & White

Motto: Les Soeurs Fideles,
The Faithful Sisters

Philanthropy: Children's Miracle
Network Hospitals

Facebook: [phimuag](https://www.facebook.com/phimuag)

Twitter: [@PhiMuAG](https://twitter.com/PhiMuAG)

Instagram: [@phimuag](https://www.instagram.com/phimuag)



ZETA TAU ALPHA

Delta Psi Chapter

Nickname: Zeta, ZTA

National Website: zetataualpha.org

Local Website: samford.zetataualpha.org

Founded: October 15, 1898 State Female
Normal School, Farmville, VA

Samford Founded: 1965

New Member Program: 6 weeks

Mascot: Strawberry

Flower: White violet

Symbol: Five Point Crown

Colors: Turquoise Blue, Steel Gray

Motto: Seek the Noblest

Philanthropy: Breast Cancer

Awareness and Education

Facebook: ZTADeltaPsi

Twitter: @ZTADeltaPsi

Instagram: @ztadeltapsi



ALPHA DELTA PI NOTES

.....

.....

.....

.....

.....

ALPHA OMICRON PI NOTES

.....

.....

.....

.....

.....

CHI OMEGA NOTES

.....

.....

.....

.....

.....

DELTA DELTA DELTA NOTES

.....

.....

.....

.....

PHI MU NOTES

.....

.....

.....

.....

ZETA TAU ALPHA NOTES

.....

.....

.....

.....

FOLLOW US & STAY CONNECTED!



/SAMFORDGREEKS



SAMFORDGREEKS



@SAMFORDGREEKS



GREEKLIFE
@SAMFORD.EDU



@SAMFORDGREEKS

For more information, visit

[SAMFORD.EDU/GREEKLIFE](https://www.samford.edu/greeklife)



Samford University is an Equal Opportunity Institution that complies with applicable law prohibiting discrimination in its educational and employment policies and does not unlawfully discriminate on the basis of race, color, sex, age, disability, veteran status, genetic information, or national or ethnic origin.

