

# Samsung Fisheye Viewer

## User Guide

V1.00

2013-11-25

### Copyright

©2013 Samsung Techwin Co., Ltd. All rights reserved.

### Trademark

 **SAMSUNG TECHWIN** and *iPOLiS* are logos of Samsung Techwin Co., Ltd.

All other trademarks and trade names presented in this document are the property of their respective holders.

### Restriction

Copyright 2013 © Samsung Techwin Co., Ltd. All rights reserved. Do not copy, distribute, or reproduce any part of this document without written approval from Samsung Techwin Co., Ltd.

### Disclaimer

Samsung Techwin Co., Ltd. has made every effort to ensure the completeness and accuracy of this document, but makes no guarantees regarding the information contained herein. All responsibility for proper and safe use of the information in this document lies with users. Samsung Techwin Co., Ltd. may revise or update this document without prior notice.

### Contact Information

SAMSUNG TECHWIN Co., LTD.

Samsungtechwin R&D Center, 701, Sampyeong-dong, Bundang-gu, Seongnam-si, Gyeonggi-do, Korea, 463-400

TEL: +82-70-7147-8740~60 FAX: +82-31-8018-3745

<http://developer.samsungtechwin.com>

SAMSUNG TECHWIN AMERICA Inc.

100 Challenger Road Ridgefield Park, New Jersey, 07660 U.S.A.

SAMSUNG TECHWIN EUROPE LTD.

2nd Floor, No. 5 The Heights, Brooklands, Weybridge, Surrey, KT13 0NY, U.K.



# Table of Contents

Samsung Fisheye Viewer (SFV) Description.....	3
Key Features.....	3
Installation.....	4

# Samsung Fisheye Viewer (SFV) Description

The Samsung Fisheye Viewer (SFV) plug-in can be run in several instances of XProtect® Smart Client by dragging and dropping it into a view, and thereby creating a number of virtual cameras only limited by the performance of the PC running XProtect® Smart Client. The fisheye video stream is recorded in the Milestone XProtect® Recording Server, and play back of the recorded video gives the same possibilities for dewarping of the stream similar to the live view situation

## Key Features

The SFV plug-in supports several features as follow;

- Video stream from Samsung Techwin fisheye cameras can be dewarped into a number of virtual cameras in XProtect® Smart Client.
- Different view types can be selected in the dewarping plug-in window in XProtect® Smart Client.

In case of Ceiling or Ground mode, examples of view types include '360 overview', 'Double panorama view', 'Quad view', 'Single rectangle view', and '360 overview + 3 Rectangle view'. In case of Wall mode, examples of view types include '360 overview', 'Single panorama view', and 'Single panorama view + 2 Rectangle view'.

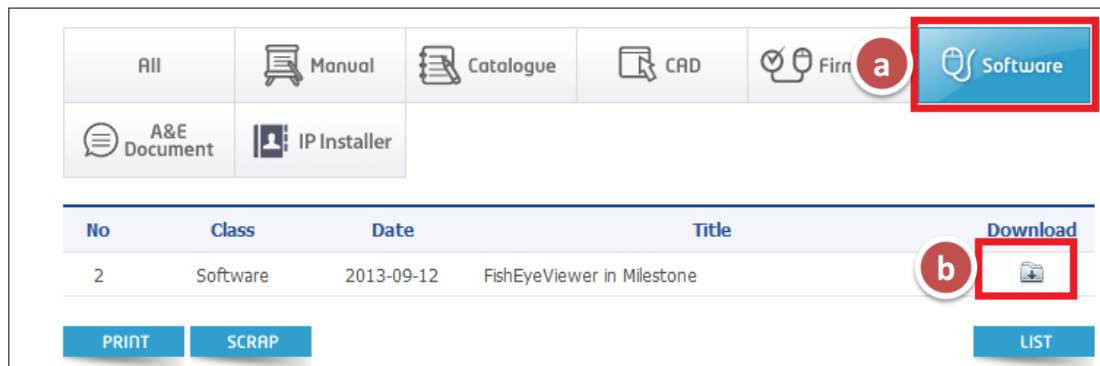
- The fisheye video stream can be recorded and dewarped again when playing back video for later investigations.

# Installation

## Procedure

**Step 1.** Download plug-in from Website:  
[http://www.samsungsecurity.com/product/product\\_view.asp?idx=6930&cid=83&cvl=0#FL080000](http://www.samsungsecurity.com/product/product_view.asp?idx=6930&cid=83&cvl=0#FL080000)

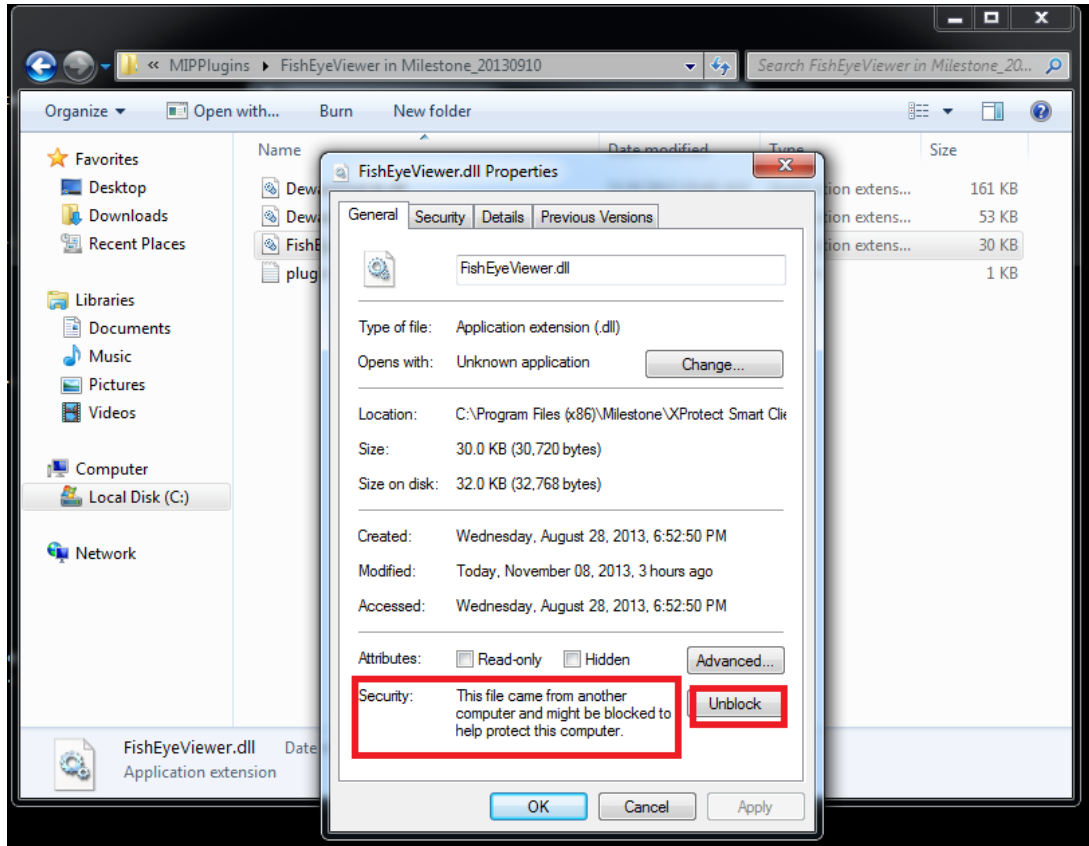
- a. Go to the **Software** tab and you can find a FishEyeViewer in Milestone.
- b. Please download the zip file and save it on your local PC.



**Step 2.** Extract zip folder to the following location:  
**C:\Program Files (x86)\Milestone\XPProtect Smart Client\MIPPlugins**

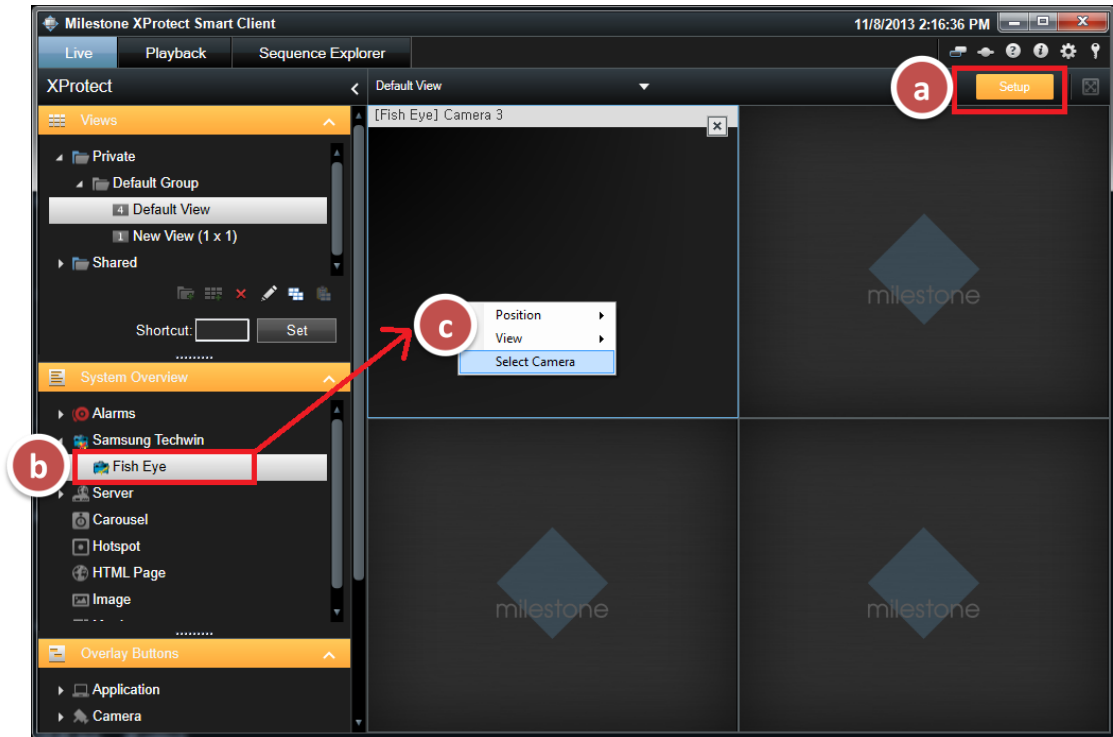
**Step 3.** Navigate inside the SFV plug-in folder and go to each DLL file and unblock it.

If an application has been copied from the web, it is flagged by Windows as being a web application, even if it resides on the local computer. If you do not unblock it you will not be able to load the plug-in because of this Windows security feature.



**Step 4.** Launch the Milestone Xprotect Client.

- a. Click **Setup** and go to **System Overview**.
- b. Expand **Samsung Techwin** node and drag the **Fish Eye** module into a view of the grid.
- c. Right click on the view and select camera.



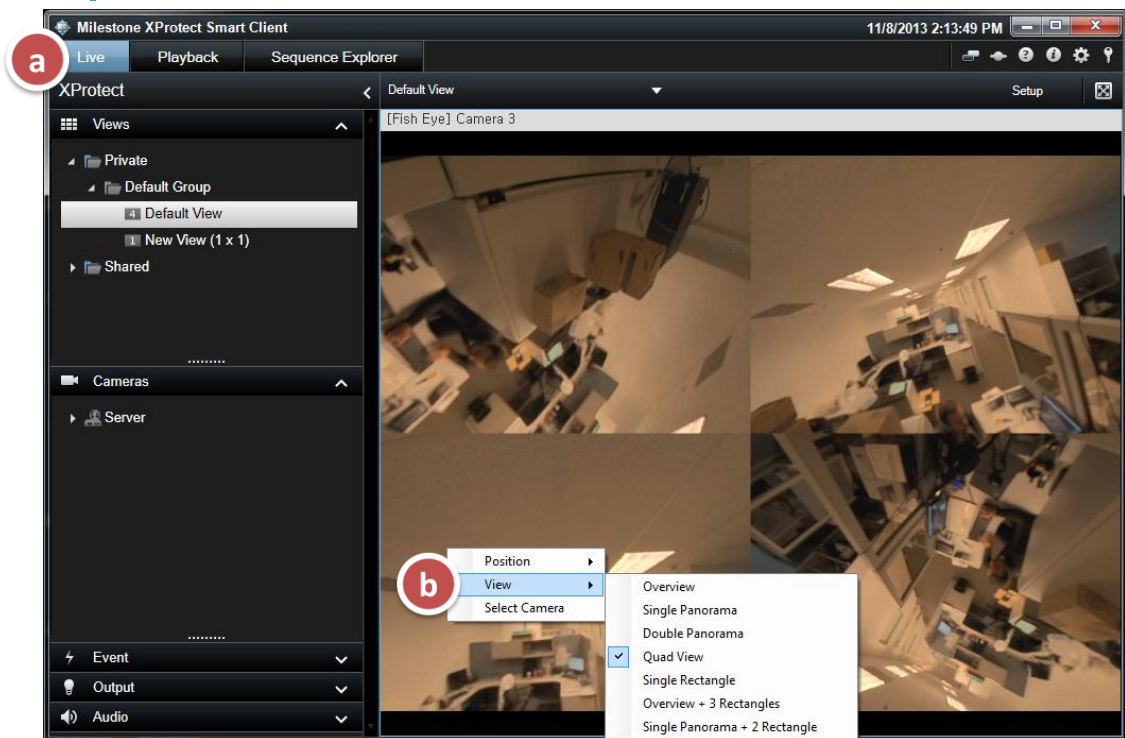
**Step 5.** Select the Camera from the recording server.

- a. Click out of setup again to go into the normal live view.
- b. Right click on the view and select the mounting position (Wall, Ceiling, or Ground) and **View** (Overview, Panorama, Quad...etc).

**Note**

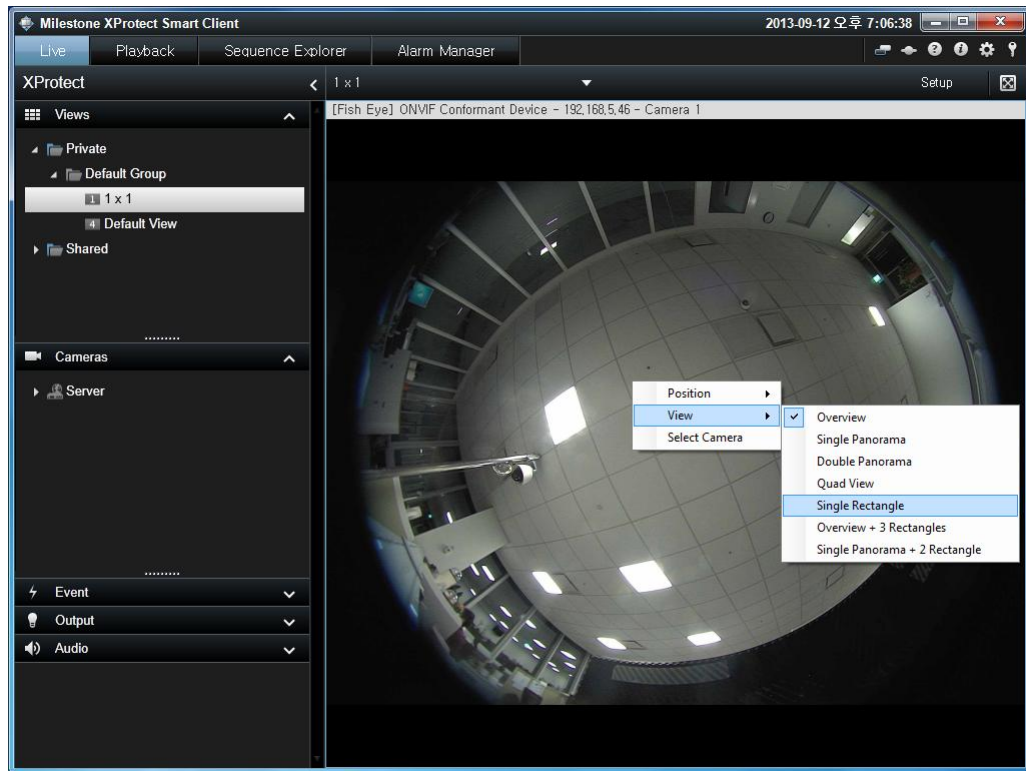
Some views are restricted depending on mounting position.

Ex: Single Panorama is only available for Wall mount and not ceiling but you can use double panorama for ceiling mount.



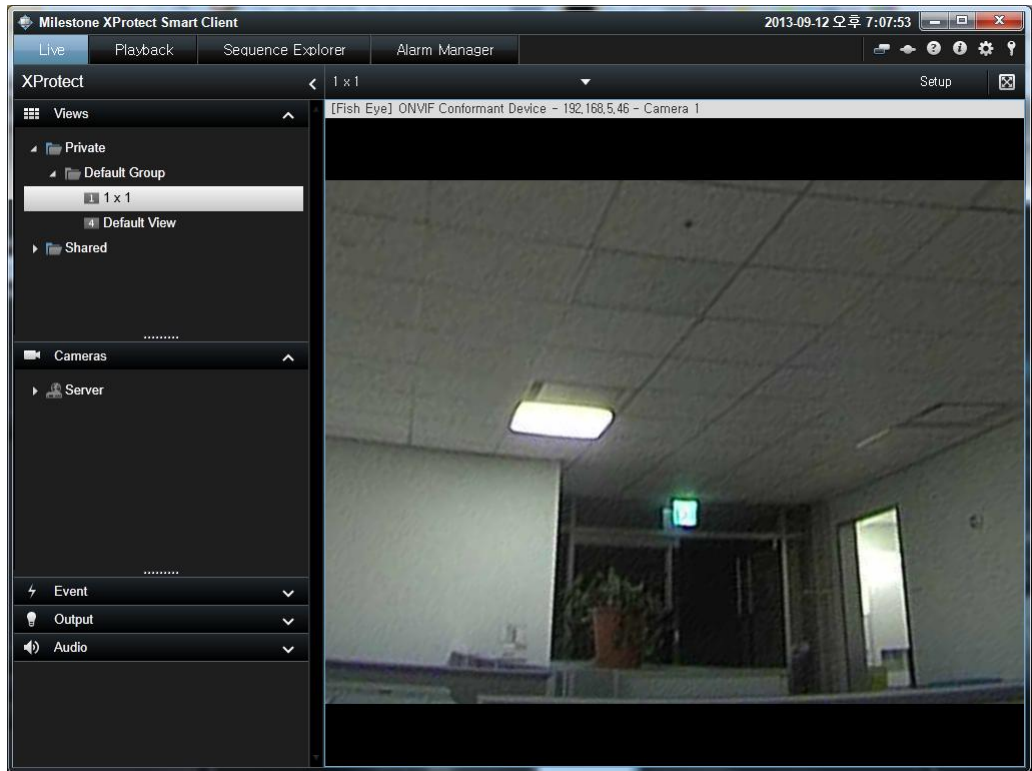
- Usage Examples

- Camera Position & View Mode settings (through mouse right click)

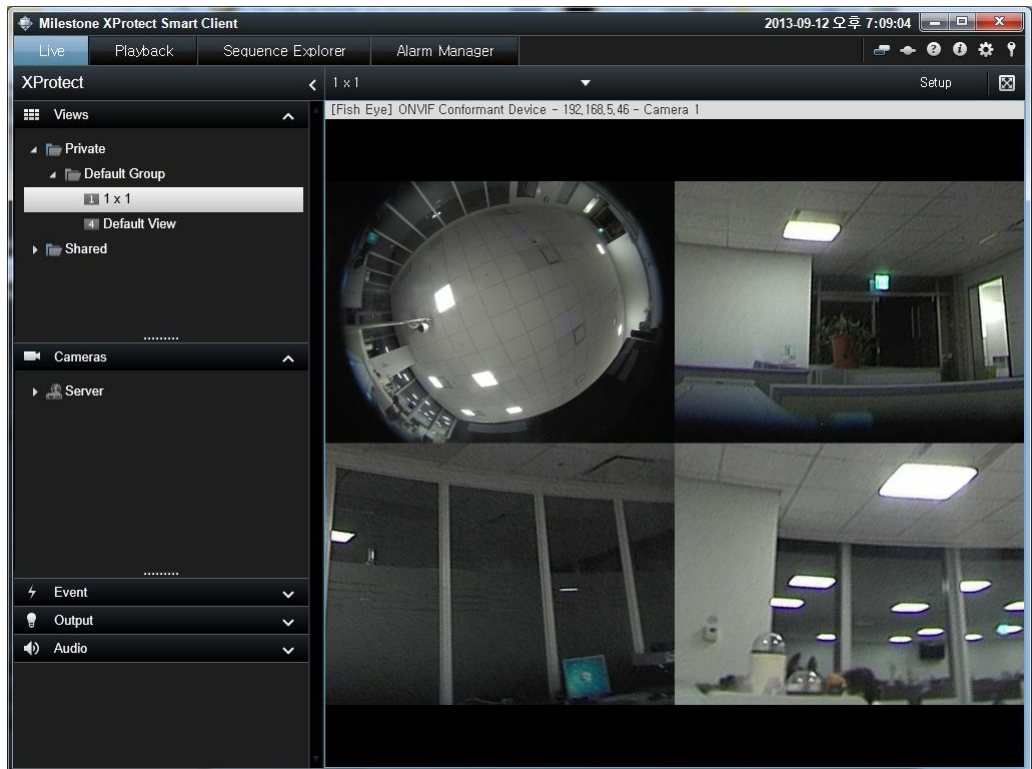




- Single Rectangle mode in live video



- Overview + 3 Rectangle mode in live video



- Double Panorama mode in playback

