

SAP Analytics Cloud | Planning

Product Strategy & Roadmap

Product Management Planning & Analytics, SAP
September 2022

Legal disclaimer

The information in this presentation is confidential and proprietary to SAP and may not be disclosed without the permission of SAP. This presentation is not subject to your license agreement or any other service or subscription agreement with SAP. SAP has no obligation to pursue any course of business outlined in this document or any related presentation, or to develop or release any functionality mentioned therein. This document, or any related presentation and SAP's strategy and possible future developments, products and or platforms directions and functionality are all subject to change and may be changed by SAP at any time for any reason without notice. The information in this document is not a commitment, promise or legal obligation to deliver any material, code, or functionality. This document is provided without a warranty of any kind, either express or implied, including but not limited to, the implied warranties of merchantability, fitness for a particular purpose, or non-infringement. This document is for informational purposes and may not be incorporated into a contract. SAP assumes no responsibility for errors or omissions in this document, except if such damages were caused by SAP's willful misconduct or gross negligence.

All forward-looking statements are subject to various risks and uncertainties that could cause actual results to differ materially from expectations. Readers are cautioned not to place undue reliance on these forward-looking statements, which speak only as of their dates, and they should not be relied upon in making purchasing decisions.

Why xP&A

Analysts' View

- 1 Disruption has become the norm. For businesses to adapt, they need to plan and respond in a more **agile, cross-functionally aligned, and accurate** manner.

“...As a result, most companies will adopt a planning strategy integrating or aligning Financial Planning & Analysis (FP&A) with at least one operational planning area like Supply Chain.”
(Gartner)

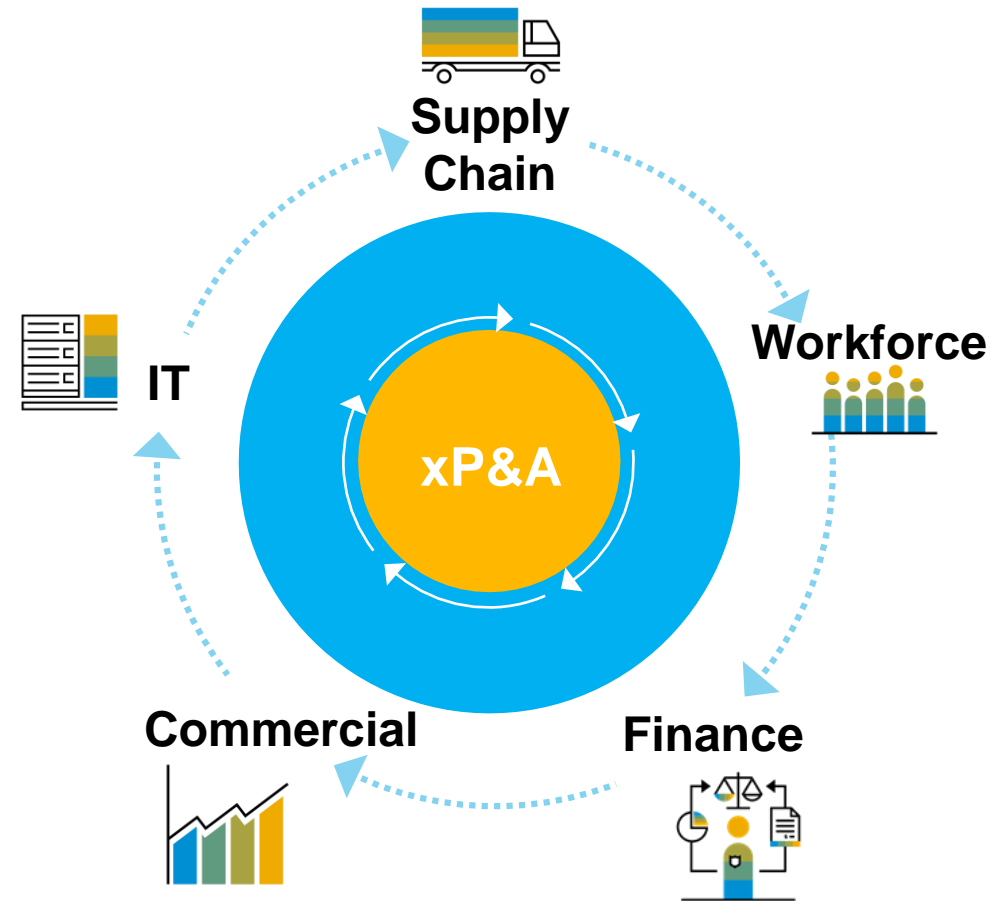
- 2 **Our Customers are Asking for it**

Our customers want to perform end-to-end enterprise planning with seamless data integration and a single user experience.

- 3 **SAP as a vehicle towards xP&A**

SAP's best of breed planning solutions assist companies on their journey to enterprise wide planning

Enable seamless planning across LOBs.



SAP Analytics Cloud



Analytics Catalog
Centralized Portal



Mobile App
iOS & Android



Digital Boardroom

Stories

Analytic Applications

MS Office Integration



Business Intelligence

Data Exploration
Dashboards & Visualizations
Enterprise Reporting



Augmented Analytics

Conversational Analytics
Automated Analytics
Predictive Analytics



Enterprise Planning

Planning and Forecasting
Collaboration and Workflows
Predictive Planning



PLATFORM SERVICES

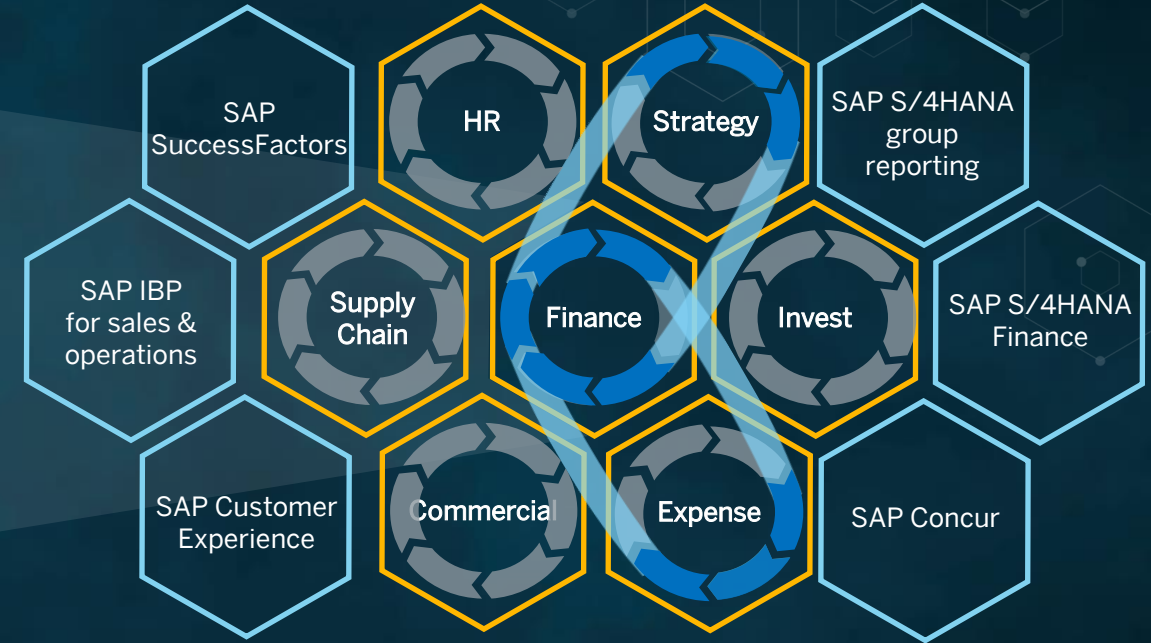
Data Connectivity
Data Preparation
Data Modeling

Content Translation
Lifecycle Mgmt
Auditing & Monitoring

Scheduling
Collaboration
APIs and SDKs

Extended Planning and Analysis

steered by SAP Analytics Cloud



1 **Strong planning capabilities** to create powerful planning solutions within the company

2 **Link operational and financial planning** to improve alignment and performance

3 **Integrate with enterprise applications** for one source of the truth

Extended Planning and Analysis

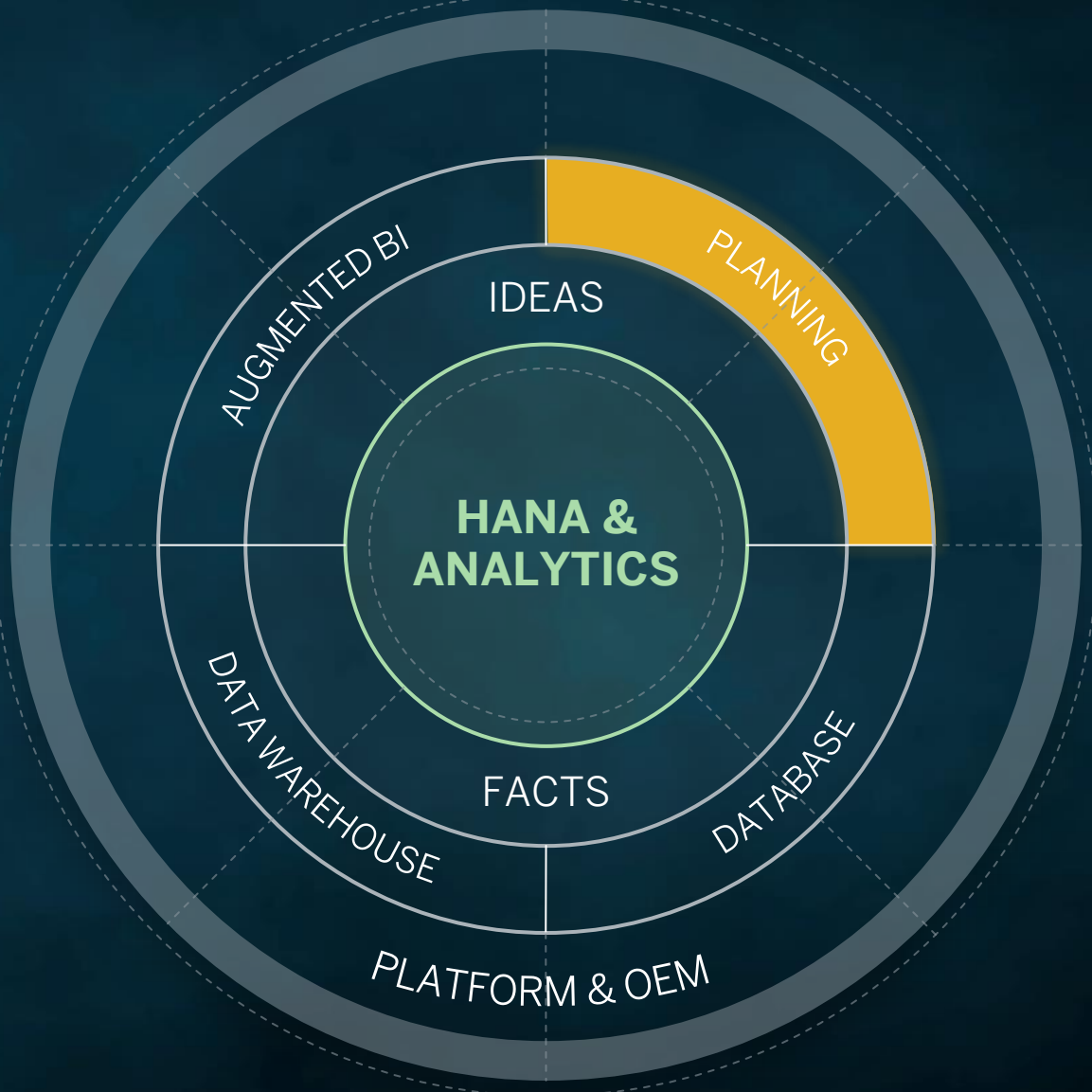
enabled by best in breed LOB planning solutions



Finance and Supply chain alignment

- Optimized supply and inventory plans
- Supply aligned with demand
- Financially validated to strategy and profitability targets

Roadmap Planning



Planning – Investment Areas



Business Technology Platform

Deep integration with DWC working towards replication-free planning



Advanced Planning features & Flexible Modeling

Extension of multi-actions for automation, flexible time, data first and multi-language on New Model, and more insights into Data Actions



Integrate predictive forecasts with planning

Automation and scheduling, increased transparency & trust



Enhance Workflow Support

Conditional dependencies, enhanced mass creation and bulk edit



Industry specific Business Content

Operational Sales Planning
Supply Chain roll-out and further content packages

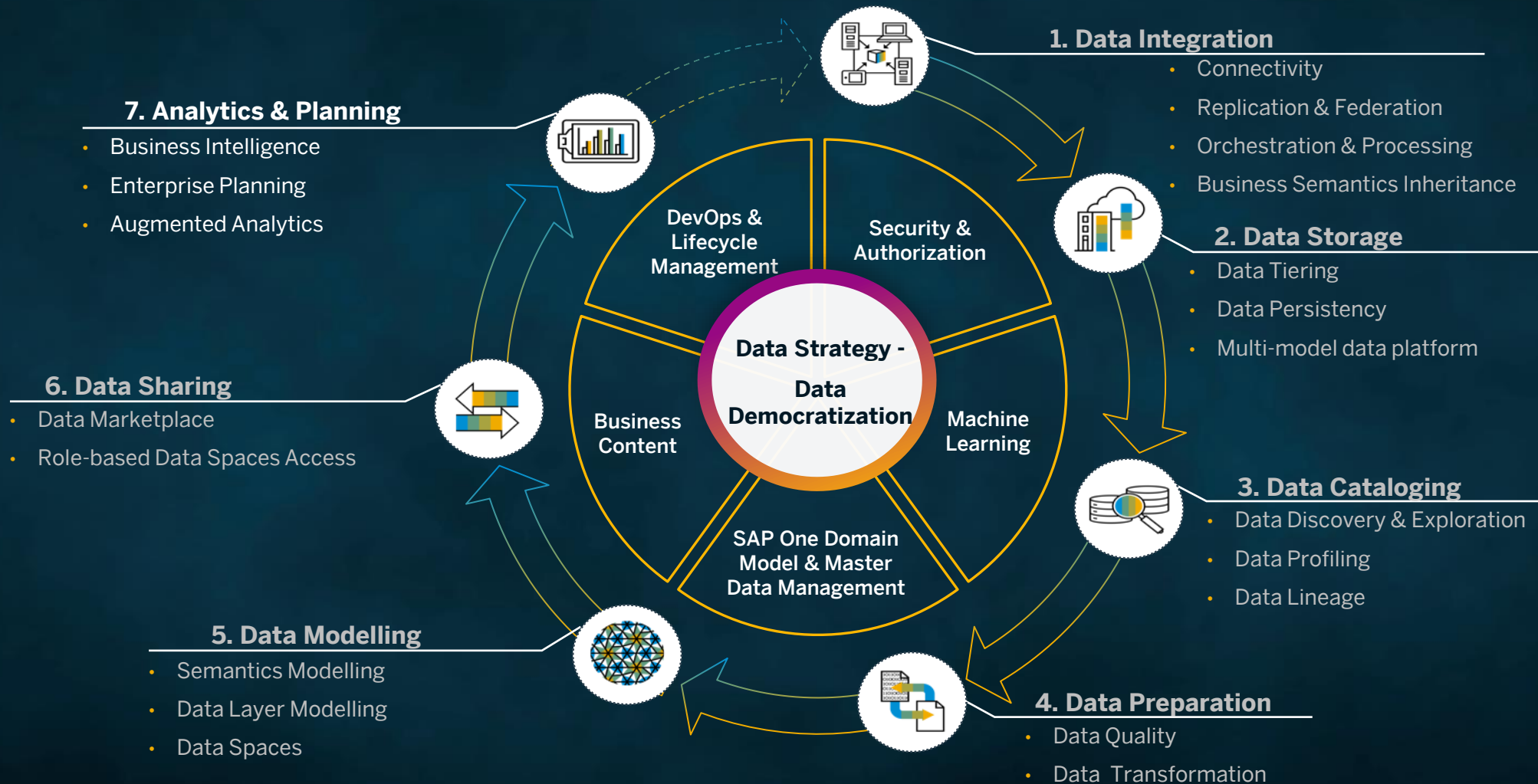


SAP Analytics Cloud Excel add-in for Office 365

Support of planning features with Data Actions, new lines, commenting, and more. Extension of reporting features

Data-to-Value Solution Path

Data Democratization: Bring Autonomy and Value to the Entire Business



Growing Together: SAP Data Warehouse Cloud & SAP Analytics Cloud

Common Data Foundation

Analytics-as-a-Service

Planning-as-a-Service

Today

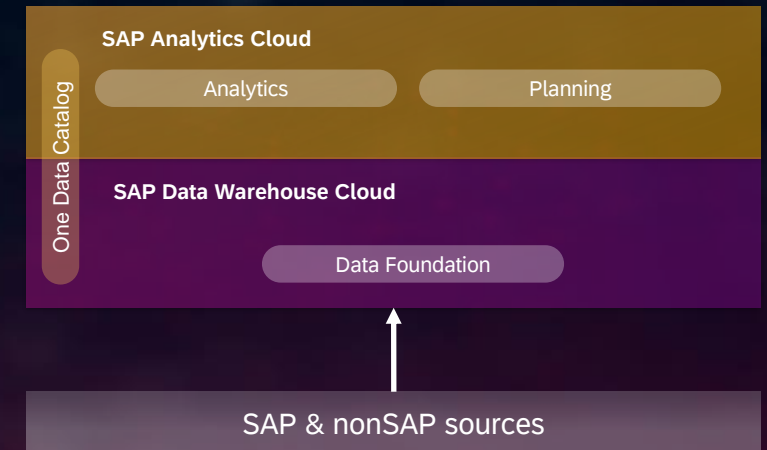
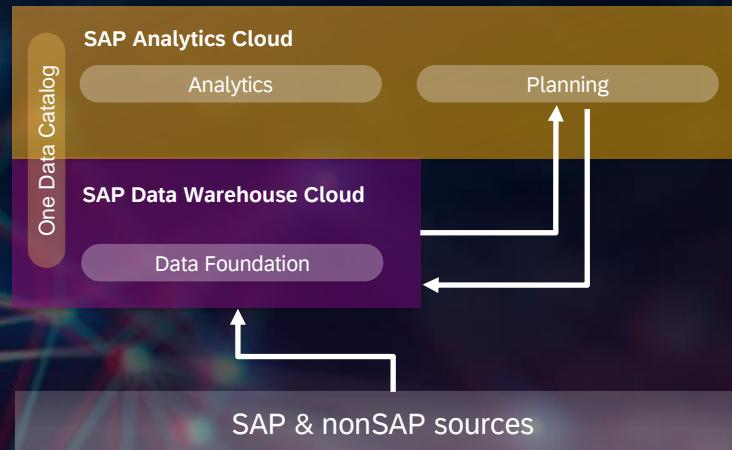
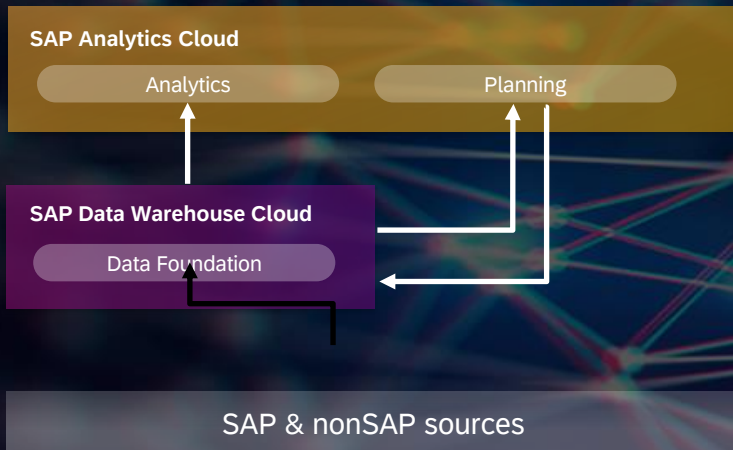
Q1.2023*

2023*

DWC as common data foundation with live access for analytics and bi-directional integration for planning

DWC Models to become a native & integrated model type in SAC. One Catalog across DWC & SAC

Streamlining planning and analysis with reduced modelling efforts



Planning-as-a-Service

Real-time plan data for analytics on Data Warehouse Cloud.
Real-time actual data for planning in SAP Analytics Cloud.



Real-time
Steering



Continuous
automated planning
on live internal &
external data



Planning on
semantically
enriched LoB
data



Simplified
model and data
maintenance

Benefits for SAC Customers

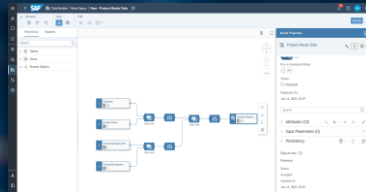
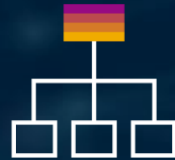
Key Areas where DWC adds value to SAC

Connectivity & Integration



- Connect to a wide range of cloud and on-premise sources
- Easily access external data via **SAP Data Marketplace**

Self Service Modeling



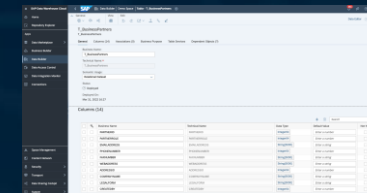
- Self Service data modeling for business and IT
- **Spaces** to access and share models within zones of trust

Business Semantics



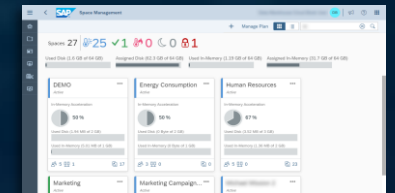
- Enriched semantical information can be leveraged by SAC
- Easy retrieval and creation of business semantics

Advanced Data Management



- Support of ETL processes via **Data Flows**
- Extend with **BW Bridge** for cloud-only data warehousing

Governance & Operations



- Scalable, secured and governed storage for enterprise data
- **One Data Catalog** with company-wide metadata and lineage

Unified Story – Design

Company Overview

Finance

- Operating Profit
Current Quarter, in mEUR (% YoY Growth)
1,868 (+2%)
- Total Revenue
Current Quarter, in mEUR (% YoY Growth)
7,112 (+6%)

Sales & Marketing

- OnPremise Forecast
Current Quarter, in mEUR (% YoY Growth)
979 (-11%)
Verbal
- Cloud Bookings Forecast
Current Quarter, in mEUR (% YoY Growth)
1,825 (+32%)
Verbal

Data Insights

- Data Quality
Current Quarter
91%
- Data Operations
Satisfaction in %
95%

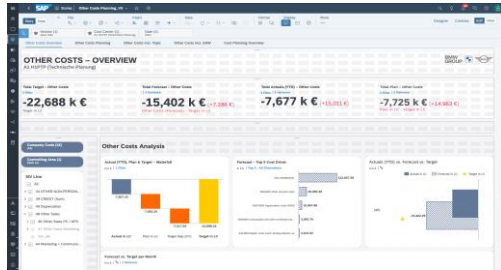
SAP vs. External Market Performance
SAP Growth vs. GDP Growth

Builder Styling

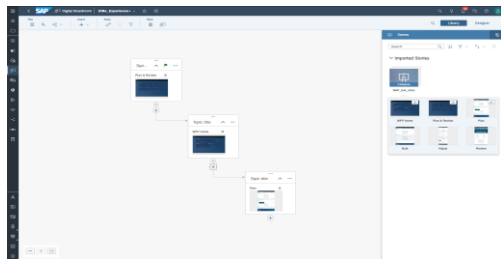
- Data Source: SAP Financials
- Chart Type: 22 Numeric Point
- Measures: Operating Profit
- Color: [Color palette]
- Filters: Company Code (SAP SE)

Unified Story – One Tool For All

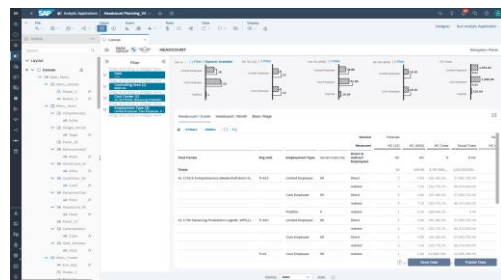
Vision



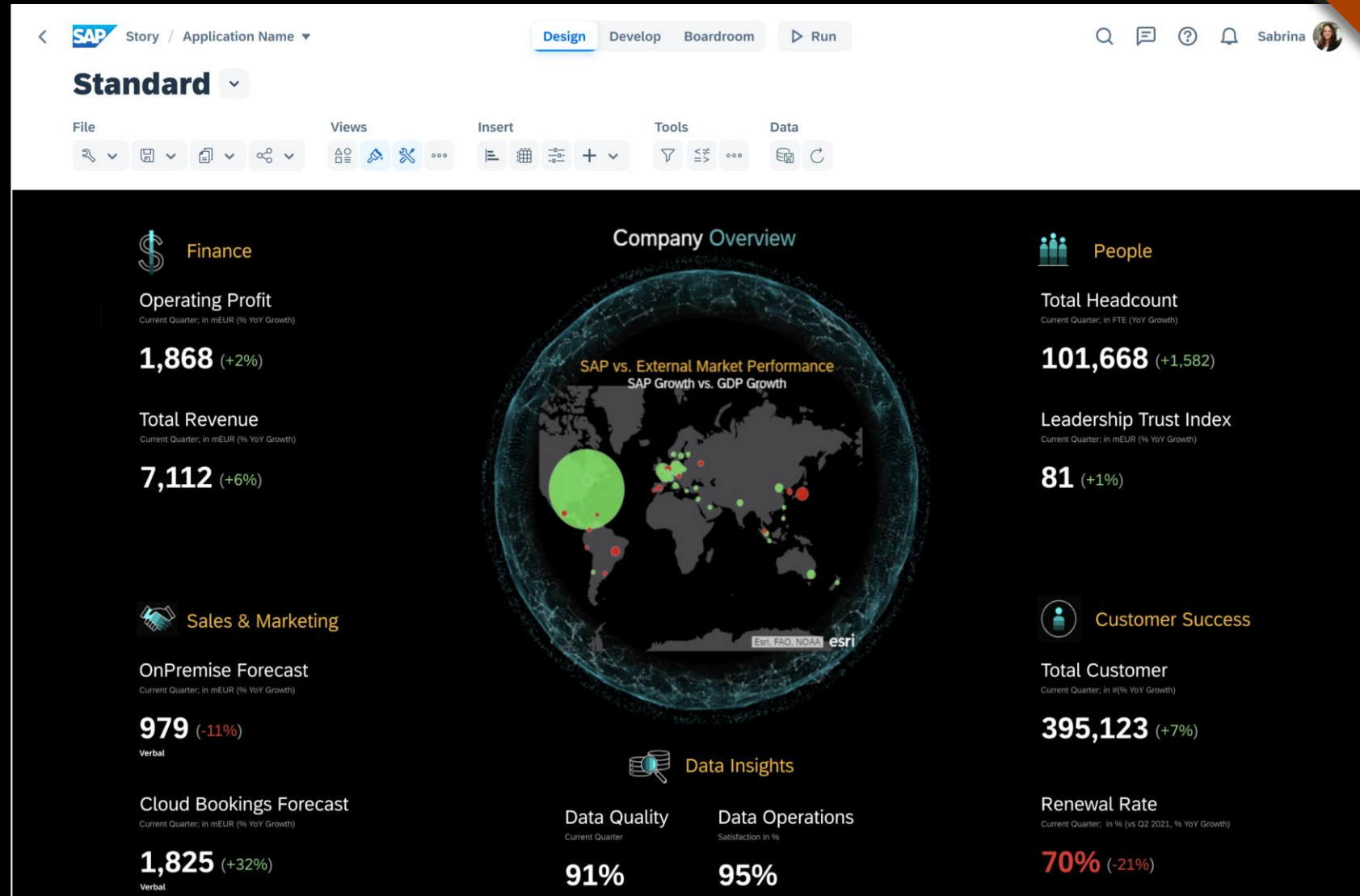
Story Builder



Digital Boardroom



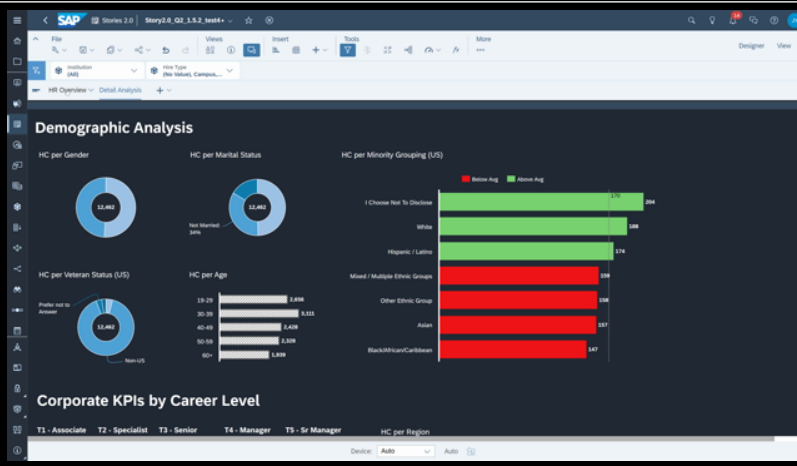
Analytic Application



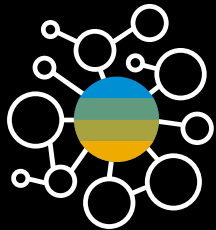
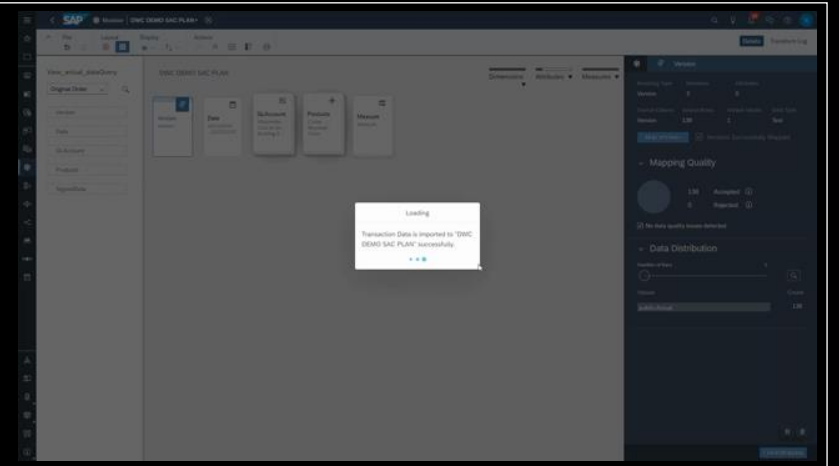
Demos



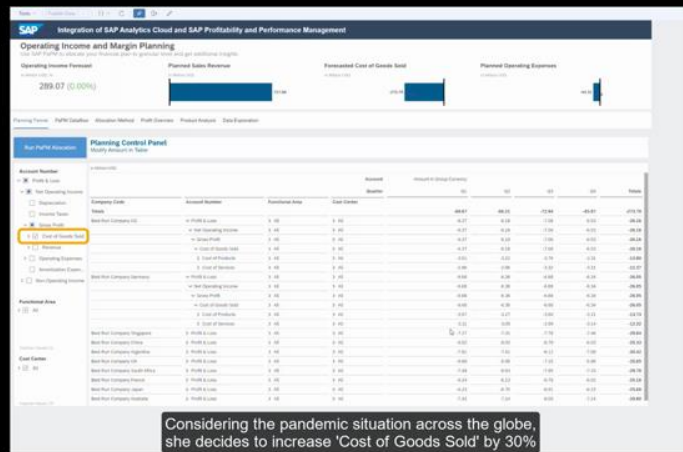
Unified
Convergence of Story
and Analytics Designer



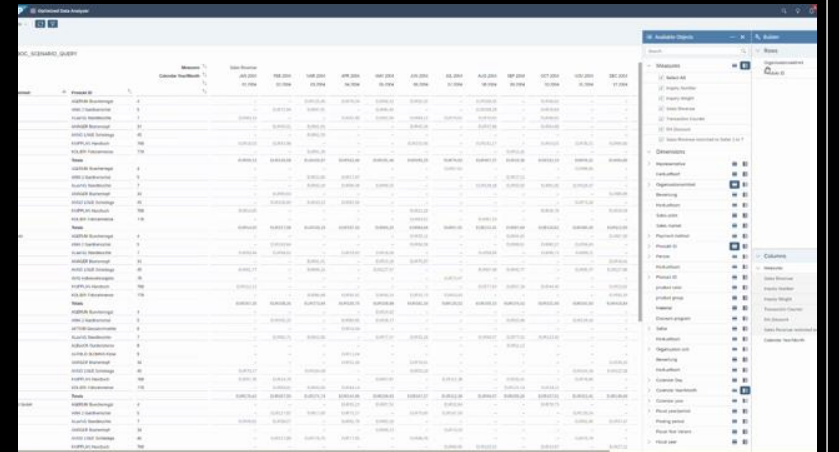
SAC DWG
Integration



PaPM Prototype

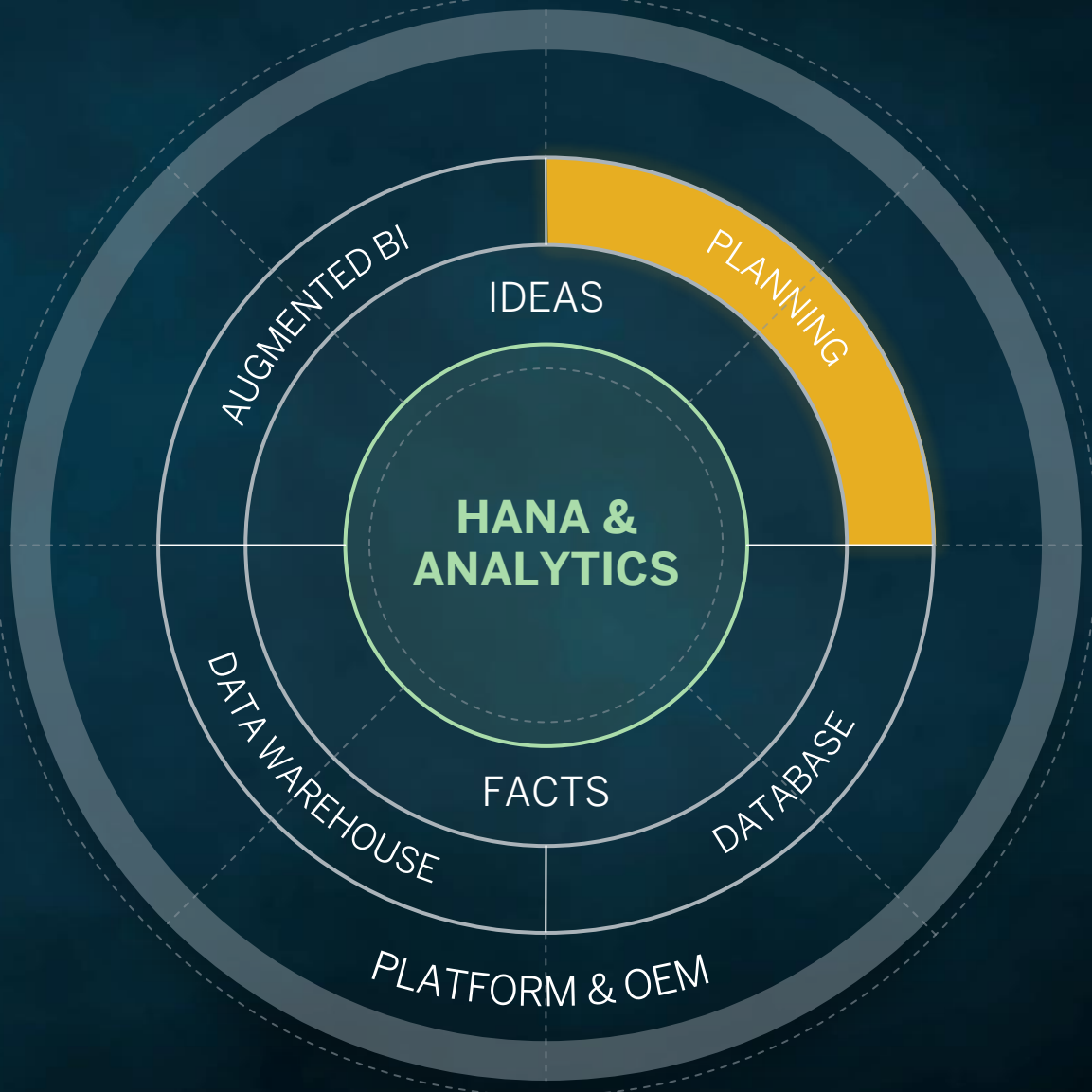


Data Analyzer Update
Accelerated Data Analyzer as THE one exploration experience



Recent Innovations

Planning



SAP Analytics Cloud in 2022

Executing our Strategy

2022 Feature Highlights



Planning Process: task dependencies



Planning: Fluid Data Entry



Data Integration: Improved BW-live & Performance



Multi Actions: Smart Predict and Data Integration



MS Add-in: Cell-based formulas



Collaboration: Bursting of publications with authorizations



Modeling: Flexible Time Dimension



New Business Content: CX Planning



Planning: Data Action Debugger



Story 2.0: Convergence of DiBo, Story and App Design



Platform: SAC DWC Integration



Collaboration: Dimension Comments



Data Exploration: Data Analyzer



Platform: open API for data Export



Story: Optimized design mode





Data Import with Multi Actions

Advanced Planning

Dedicated step type for executing data import jobs

Ability to trigger import across multiple models at the same time using a single scheduled item

The screenshot displays the SAP Multi Action Designer interface. The main workspace shows a vertical flowchart with the following steps: 'Begin', 'Data Import 2', 'MilkProduction_Planning', 'Publish', and 'Untitled'. A 'Data Import Step' configuration panel is open on the right, showing fields for 'Step Name', 'Model' (set to 'MILK_PRODUCTION'), and 'Import Job'. A dropdown menu for 'Import Job' is expanded, listing 'MILKPRODUCTION', 'Delta Import', 'CV_MILKPRODUCTION', and 'Import Job 1'. A 'Preferences' panel is also visible, showing the 'Name' as 'Multi Action Demo_Data Import' and 'Description' as 'Demo Case'.

Job list based on specific import jobs defined in the Data Management tab for the specific model being referenced

Trigger external API with Multi Actions

Advanced Planning

Orchestrate planning workflows end to end also across external systems

Workflow

Step 1: Publish the data in SAC (Version Management Step)

Step 2: PaPM Calculation (API Step)

Step 3: Import Data from PaPM to SAC (Data Import Step)

```

    graph TD
      Begin[Begin] --> Publish[Publish data]
      Publish --> Calculation[Trigger PAMP Calculation]
      Calculation --> Import[Import PAMP data into SAC]
    
```

DEMO_Submit Data in SAC and PAMP PRO_4

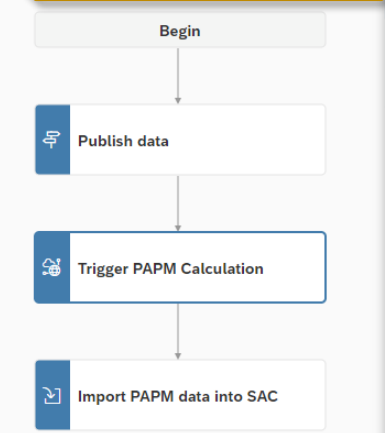
Source SAC Model - Exporting data to PaPM

Account	Company Code	Cost Center	Functional Area	Group Currency	Acc
HSL	0001	FAC	ADM	USD	400

TargetModel_Data from PAMP_PRO4

ACCOUNT	BUDAT	RACCT	RBUKRS	RCNTR	RFAREA
---------	-------	-------	--------	-------	--------

Trigger public HTTP API of remote application via multi actions.



API Step

Configure

API Step

Step Name:

HTTP API Connection:

Generic API settings

API URL:

Method:

Default Header Fields:

+ Add Header Field

Body:

```

    1 {
    2   "procTemplateId": "PRO_3_",
    3   "procId": "",
    4   "envId": "ITE",
    5   "version": "0003",
    6   "activity": "A001",
    7   "postRunAction": null,
    8   "parameters": {"items": []},
    9   "selections": {"items": []}
    10 }
    
```

Extended Planning & Analysis SAP Road Map Explorer

The screenshot displays the SAP Road Map Explorer interface. At the top, there is a navigation bar with 'SAP Road Map Explorer' and tabs for 'Products', 'Processes', 'Industries', and 'My Road Maps'. A search bar shows 'Enterprise Plan...' and '35 Road Map Items'. Below the navigation, there are filters for 'Products', 'Industries', and 'Focus Topics', along with a 'Current - Latest' button and a 'Save' button.

The main content area is divided into three columns representing different quarters:

- Q2 2022 (CURRENT):** 16 Road Map Items. Includes items like 'Advanced Formula - define member-set condition based on an unequal...', 'Data Actions - ability to abort pending actions', 'Data Export - open API for data export (general availability)', 'Data Integration - bi-directional transfer with SAP Data Warehouse...', 'Modeling - Flexible Time handling', 'Multi Actions - public dimension parameter for multi-model scenarios', 'Plan Entry - data entry disaggregation respecting data locks', 'Plan Entry - fluid data entry (general availability)', 'Plan Process Management - additional task wizard features', 'Plan Process Management - assignee support for automatic calendar tasks', 'Plan Process Management - conditional dependencies and...', 'Plan Process Management - improved management of child tasks', 'Planning Publish&Leave dialog in analytics applications', and 'SAP Business Planning and Consolidation (SAP BPC) - live...'.
- Q3 2022:** 10 Road Map Items. Includes items like 'Data Actions - ability to abort running pending actions', 'Data Actions - extended API for analytical applications', 'Modeling - multi-language master data', 'Multi Actions - data acquisition step type', 'Plan Entry - display leaves only and local filter support in a table for...', 'Plan Process Management - multi-select for calendar tasks', and 'Predictive planning - Forecast on business calendars'.
- Q4 2022:** 8 Road Map Items. Includes items like 'Commenting - support for model-based calculated accounts or...', 'Data Action - integration of allocation design time', 'Import from a CDI data source for SAP S/4HANA into a model for SAP...', 'Modeling - New Model (on-going enhancements Q4/2022)', 'Modeling - recursive calculations for stories and model formulas', 'Plan Entry - calculated and restricted measures respect data locking of...', 'Plan Process Management - bulk editing for calendar tasks', and 'Planning Process Management - integrated list and gantt view'.

Each item card includes a title, a star icon, and a 'SAP Analytics Cloud' label. Some items are marked as 'Future Release'.

Current Planning Roadmap

+ SAC Add-in for Office 365

Thank you.

Follow us



www.sap.com/contactsap

© 2020 SAP SE or an SAP affiliate company. All rights reserved.

No part of this publication may be reproduced or transmitted in any form or for any purpose without the express permission of SAP SE or an SAP affiliate company.

The information contained herein may be changed without prior notice. Some software products marketed by SAP SE and its distributors contain proprietary software components of other software vendors. National product specifications may vary.

These materials are provided by SAP SE or an SAP affiliate company for informational purposes only, without representation or warranty of any kind, and SAP or its affiliated companies shall not be liable for errors or omissions with respect to the materials. The only warranties for SAP or SAP affiliate company products and services are those that are set forth in the express warranty statements accompanying such products and services, if any. Nothing herein should be construed as constituting an additional warranty.

In particular, SAP SE or its affiliated companies have no obligation to pursue any course of business outlined in this document or any related presentation, or to develop or release any functionality mentioned therein. This document, or any related presentation, and SAP SE's or its affiliated companies' strategy and possible future developments, products, and/or platforms, directions, and functionality are all subject to change and may be changed by SAP SE or its affiliated companies at any time for any reason without notice. The information in this document is not a commitment, promise, or legal obligation to deliver any material, code, or functionality. All forward-looking statements are subject to various risks and uncertainties that could cause actual results to differ materially from expectations. Readers are cautioned not to place undue reliance on these forward-looking statements, and they should not be relied upon in making purchasing decisions.

SAP and other SAP products and services mentioned herein as well as their respective logos are trademarks or registered trademarks of SAP SE (or an SAP affiliate company) in Germany and other countries. All other product and service names mentioned are the trademarks of their respective companies.

See www.sap.com/copyright for additional trademark information and notices.