

# SAP BusinessObjects Dashboards

SAP BusinessObjects Dashboards

SAP Crystal Dashboard Design

SAP Crystal Server 2011

SAP BusinessObjects Edge Business Intelligence (BI)

SAP BusinessObjects business intelligence (BI) solutions

# SAP BusinessObjects Dashboards: Objectives

---



At the end of this course, you will be able to:

- Describe SAP BusinessObjects Dashboards including:
  - Key capabilities
  - Top differentiators
  - Benefits
- Effectively demonstrate sample dashboards

# SAP Dashboard Solutions

---

This course applies to:

- SAP BusinessObjects Dashboards
- SAP Crystal Dashboards, departmental edition

# Why Do Customers Need Dashboards?

## Issue

## Solution

Spreadsheets are static and aren't compelling



Create simple and engaging interactive models

Need a comprehensive view of your data



Dashboards provide a comprehensive view of business performance

Discussions take place in real time : static data isn't conducive



Do on-the-fly analysis with visual components like gauges, sliders and dials

Limited IT resources



Anyone who can use Excel can create stunning visualizations with little training

Numerous, disparate data sources



SAP BusinessObjects Dashboards connect to any ODBC or XML data source

# BI Market Needs

## Organizations need to extend the use of BI

Aberdeen Group "CIO report that top pressure on BI solutions is to improve BI ease-of-use and to deliver to BI more users"

Unisphere Research cites "lack of training as the biggest obstacle to making better use of BI"

## Customers find dashboards removes end-user BI adoption barriers

Visual, intuitive, requires no training, flexible design to match business requirements

2008 TDWI Survey: "Respondents cited many factors that accelerate BI usage, including delivering data through a dashboard (46%)"

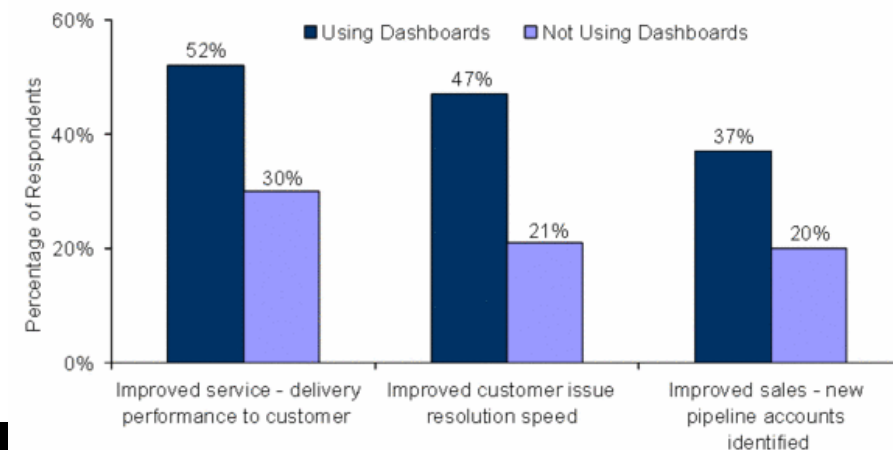
## Customers find dashboards increase operational efficiency

Removes silos, aligns organizations on common KPIs

Day to day decision making of front-line employees

Improve customer, partner, supplier ecosystem

**Dashboard Users Drive Performance Enhancements**

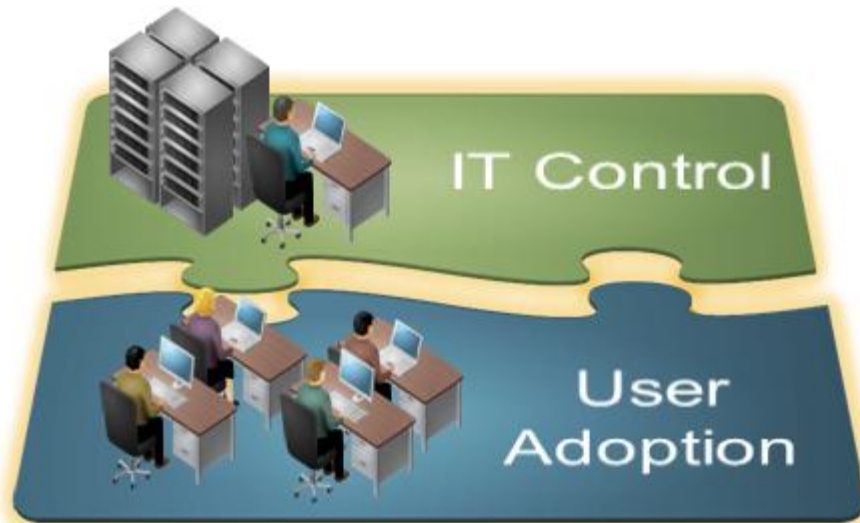


# Product Investments

## SAP BusinessObjects Dashboards 4.0

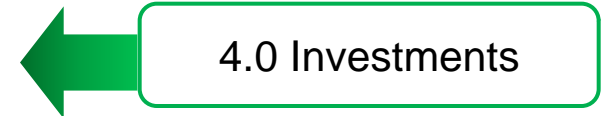
Dashboards flash based front-end removes adoption hurdles for casual, operational users

Dashboards 4.0 completes the solution by providing IT the features required to roll-out large scale dashboard solution



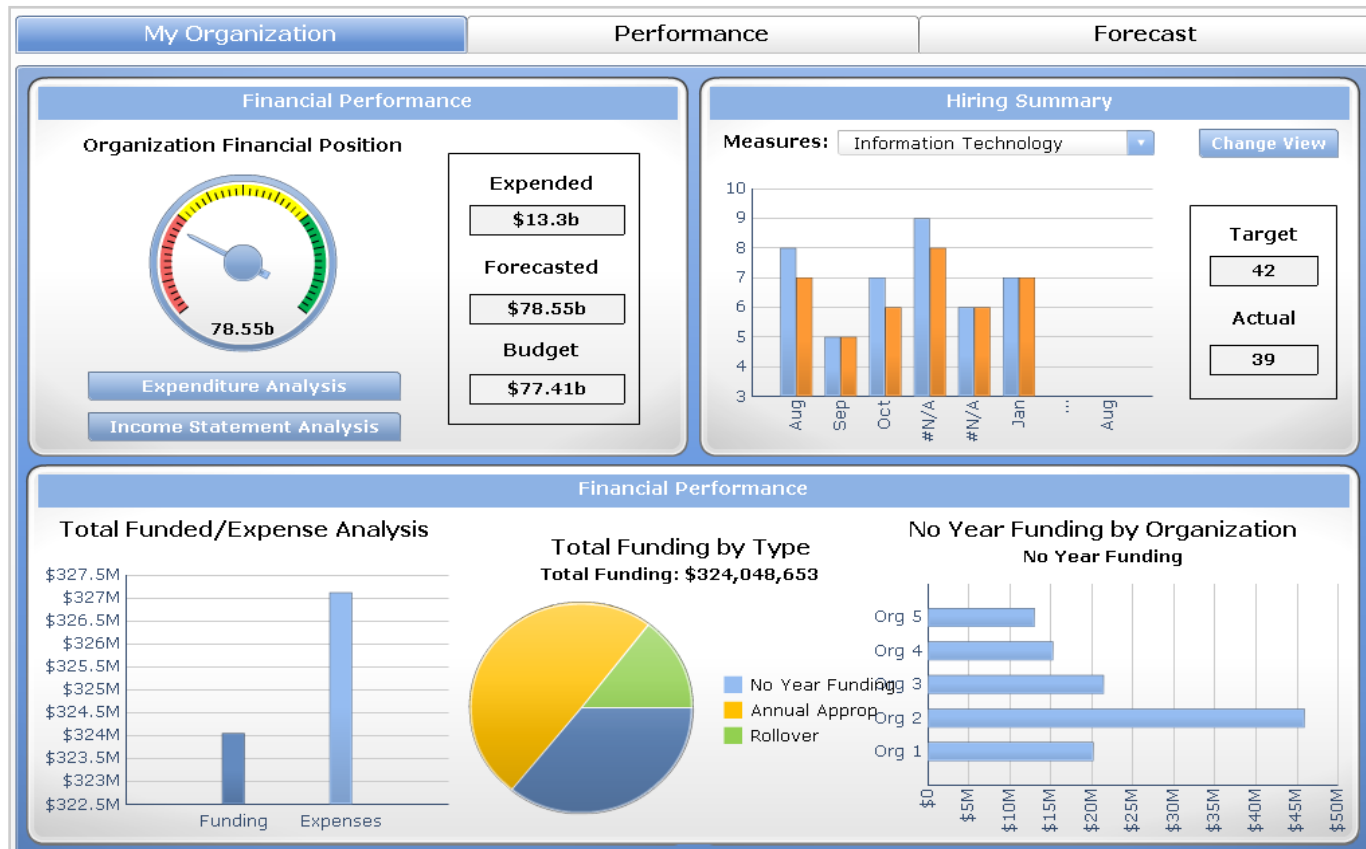
Costs  
Scalability  
Monitoring

Easy to use  
Visual  
Interactive



# SAP BusinessObjects Dashboards

See your business clearly



# What is SAP BusinessObjects Dashboards?

SAP® BusinessObjects™ Dashboards is a drag and drop visualization tool designed to create interactive analytics for powerful, personalized dashboards



## Who is it for?



Business User



Content Designer

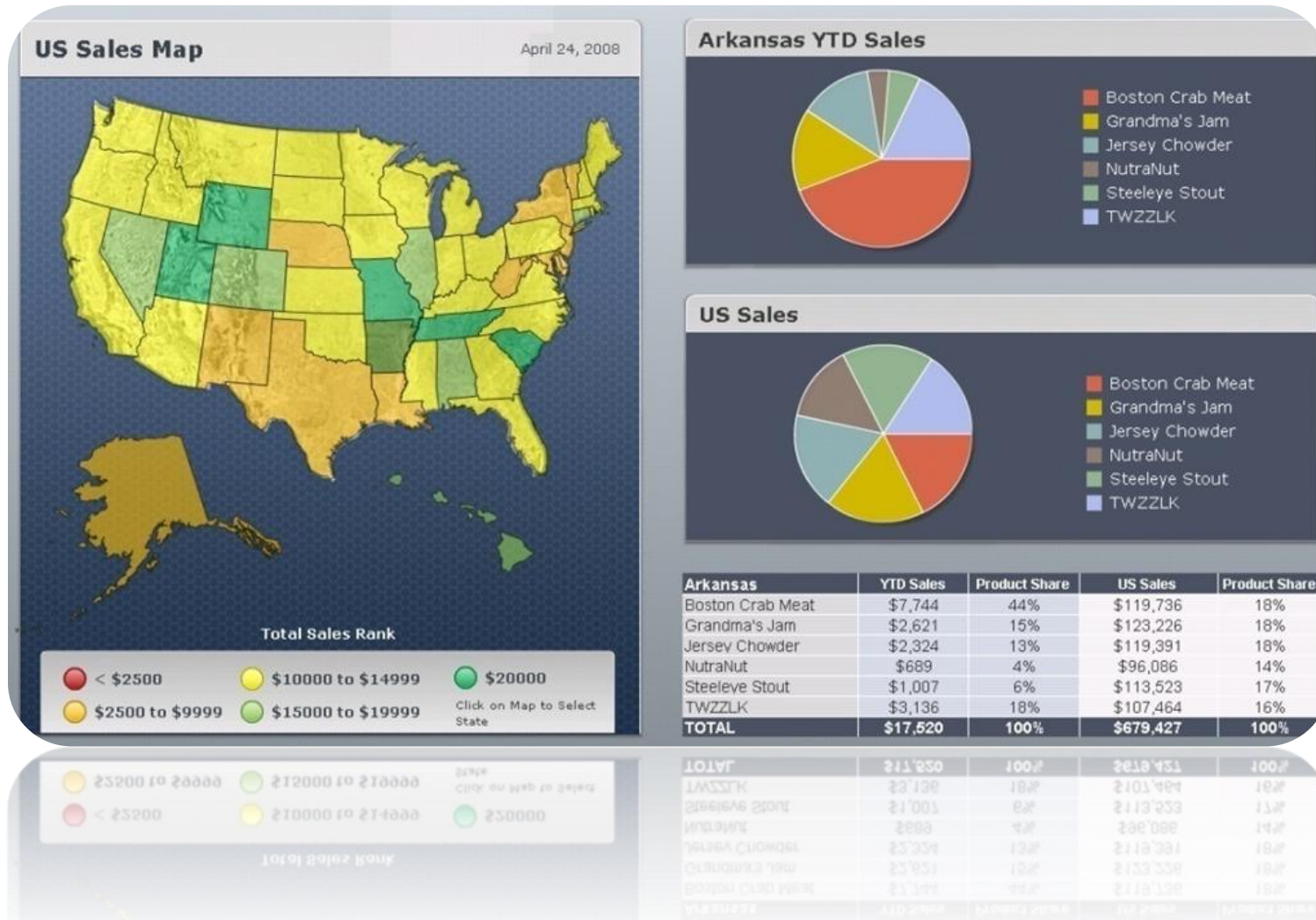


## What is it for?

- **Experience unparalleled interactivity** in dashboards for any user
- **Gain unrivaled flexibility** from design, deployment to sharing of dashboards
- **Design inspirational dashboards** that make it easy for every user to be better at what they do



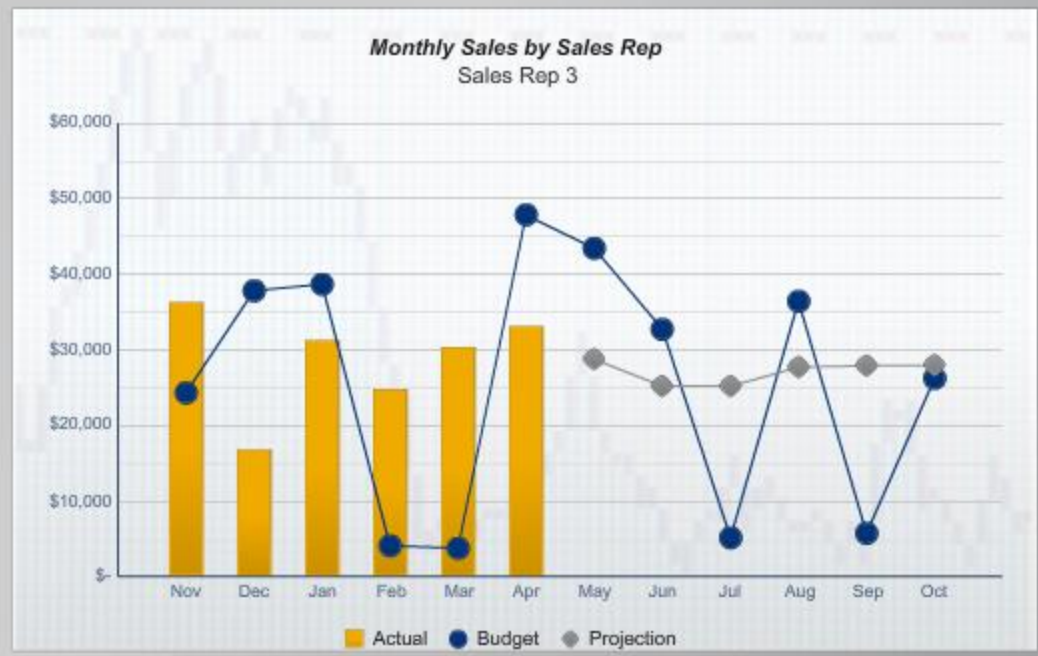
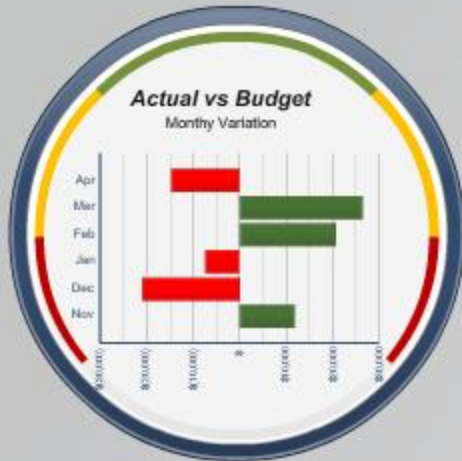
# Provide the Big Picture





# MONTHLY SALES DASHBOARD

Choose A Sales Rep:

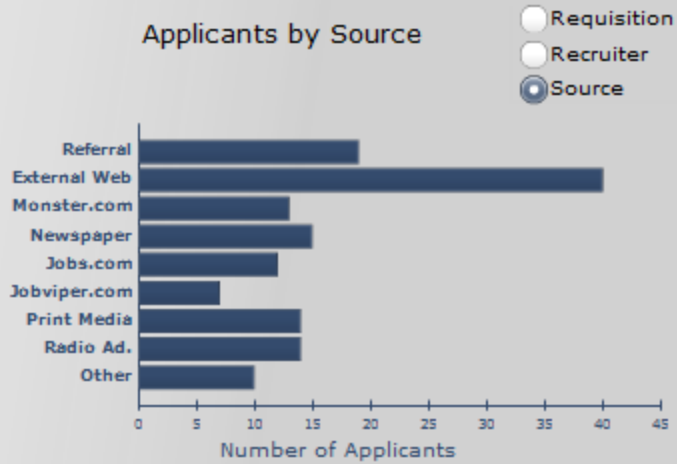


Year to Date Sales	Year to Date Budget	Difference
\$172,756	\$156,695	16,060.36

Built Using SAP Crystal Presentation Design  
Copyright SAP 2010. All Rights Reserved

## Applicant Overview

### Applicants by Source



## Requisition Overview

### Detailed Information

By Requisition

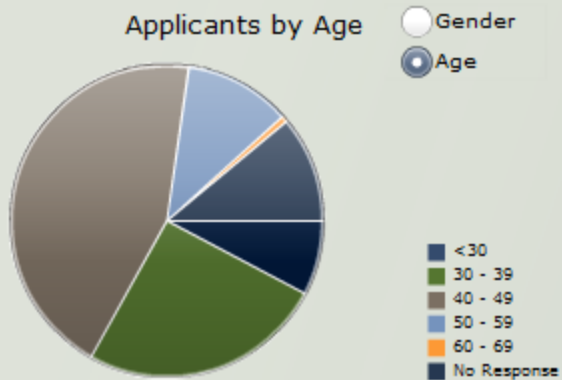
Financial Analyst

By Recruiter

Ellen Recruiter

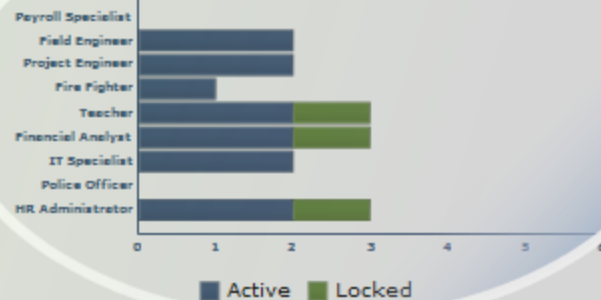
Requisition	Recruiter	Applicant	Gender	Status
Financial Analyst	Ellen Recruiter	Barbara Gleason	Female	Active
Financial Analyst	Ellen Recruiter	Franz Hertz	Male	Active
Financial Analyst	Ellen Recruiter	Hans Braun	Male	Active
Financial Analyst	Ellen Recruiter	Lisa Marks	Female	Active

### Applicants by Age



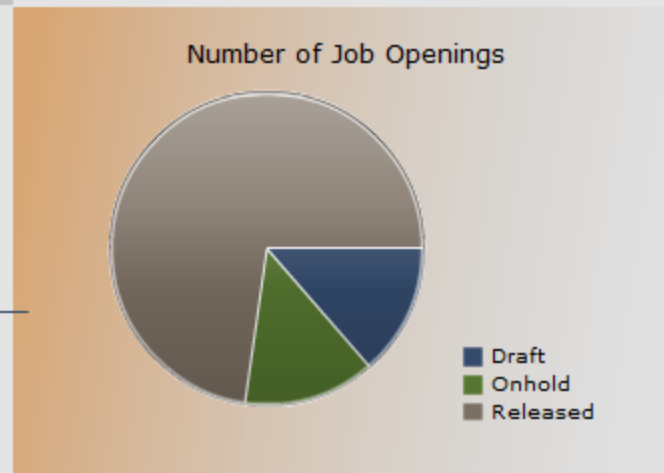
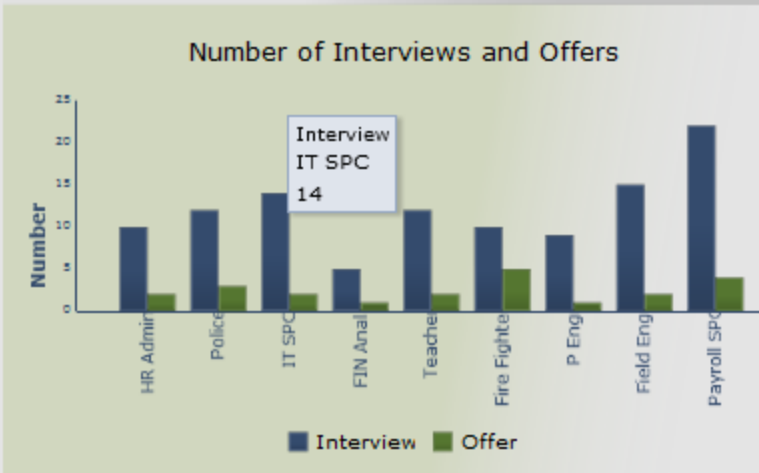
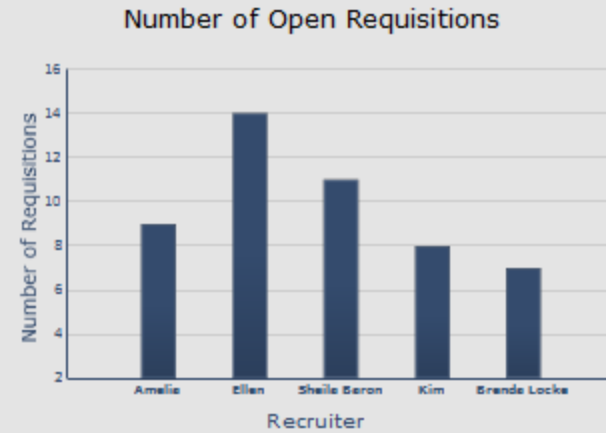
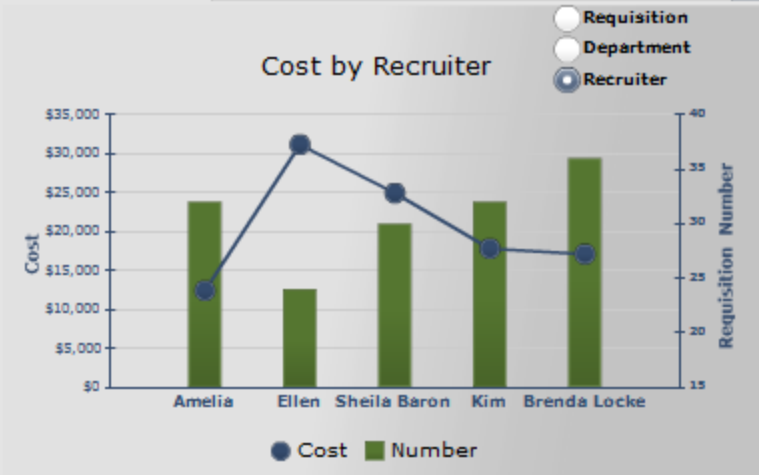
### Applicant EEO Information

By Age - <30



Applicant Overview

Requisition Overview

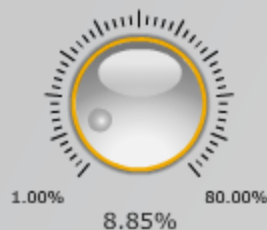


Graph

Table

Income Statement	FY2010	FY2009
<b>Revenues</b>		
Gross Sales	\$12,518	\$11,500
Sales Return & Allowances	\$618	\$500
Net Sales	\$11,899	\$11,000
Cost of Goods Sold	\$5,446	\$5,550
Gross Profit	\$6,453	\$5,450
Selling Expenses	\$2,191	\$1,900
General & Admin.	\$2,504	\$1,099
Operating Income	\$1,759	\$2,451
Other Income / Expenses	\$12	\$25
Income Before Interest & Taxes	\$1,771	\$2,476
Interest Expenses & Taxes	\$779	\$990
Net Income	\$992	\$1,486

Gross Sales Growth Rate



As a % of Sales



# Concept: Create a Dashboard

---

## Concept - Create a dashboard

Dashboards provides an interface that enables you to quickly and easily build and publish your dashboards.

In this tutorial, you will review the elements that make up the interface for Dashboards.



# Dashboard Templates

**Supply Chain Dashboard**

**Warehousing**  
Inventory Turns

Click to select metric

Hide Metric Definition

Items considered accurate if the actual on-hand quantity matches the perpetual inventory quantity.

Legend:  Cur,  Last

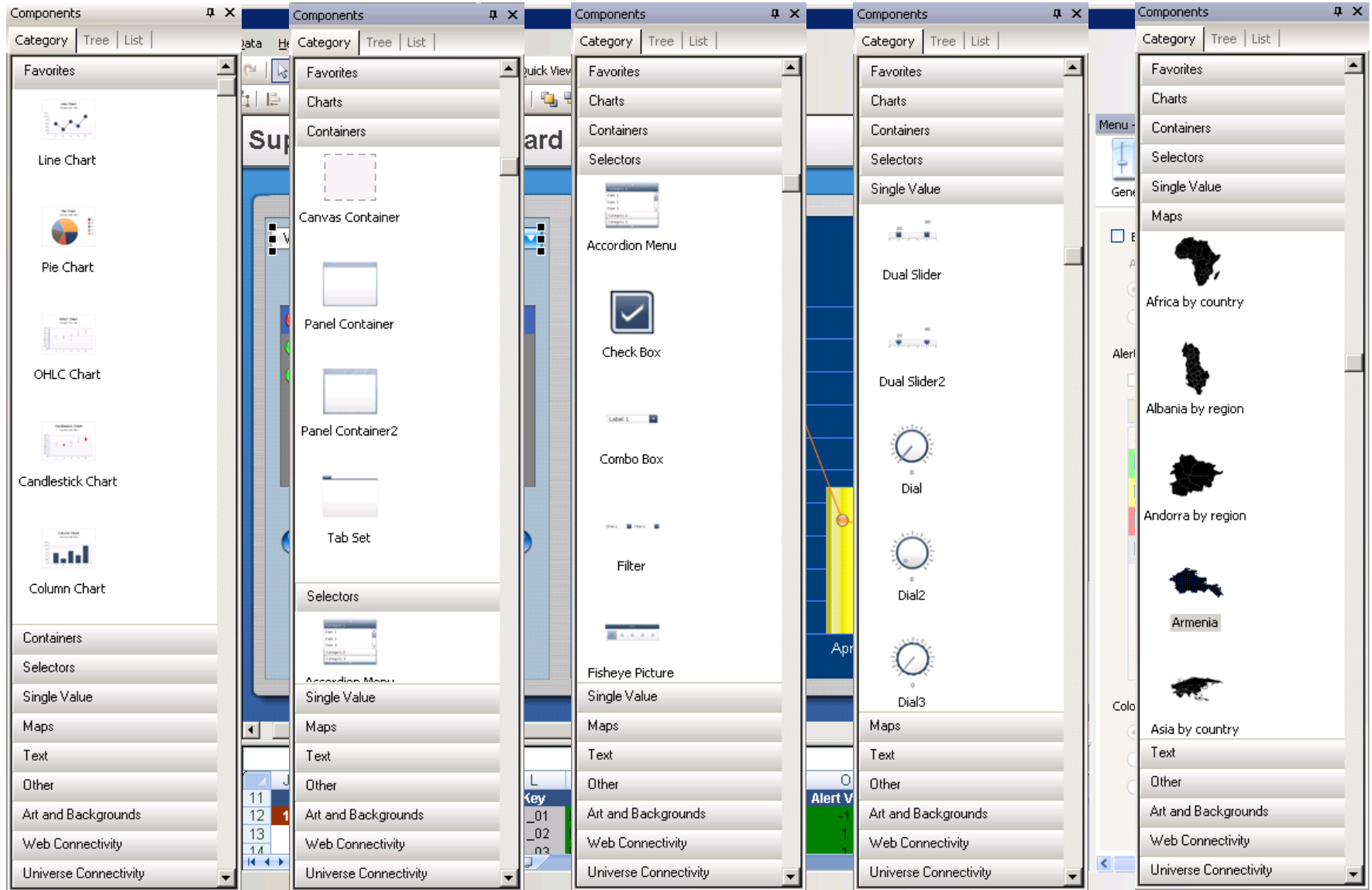
Month	Inventory Turns (Last)
Jan	1.5
Feb	1.0
Mar	1.5
Apr	1.0
May	0.9
Jun	1.2
Jul	1.3
Aug	1.3
Sep	1.4
Oct	1.1
Nov	1.5
Dec	1.0

Category	Key	KPIs	Metric Value	Alert Value
1 Warehousing	1_01	Inventory Accuracy	95%	-1
	1_02	Inventory Turns	7	1
	1_03	Defects Per MILL Opps	1	1
	1_04			
	1_05			

Dashboard Canvas

Dashboard Spreadsheet

# Dashboard Components





# Concept: Use Selectors

---

## Overview

Selectors enable you to set up your dashboards so that users can select what data they want to view in display components like charts.

In this tutorial, you will review how to configure a selector.



# Concept: Set Up Alerts

---

## Overview

Dashboards enables you to configure your components to alert you when specific thresholds have been met with color coding that displays as part of the components in your dashboard.

In this tutorial, you will review the steps involved in setting up alerts for a component.



# User Auditing and System Monitoring

## SAP BusinessObjects Dashboards 4.0

### Audit events

- Dashboard User: View, refresh, prompt, logon, logout
- Dashboards Designer: create, delete, modify

### Server monitoring metrics include

- Processing time, cache size & hits, requests (served, queued, failed), connections, threads, data transfers,...

#### CENTRAL MANAGEMENT CONSOLE

Monitoring

Dashboard | Metrics | **Watchlist** | Probes | Alerts

Show: All (20) | New | Edit | Copy | Dis... | Delete | Email ... | Add to Favorites | Det...

Status	Watches	Type
	BCP.WebIntelligenceProcessingServer Watch	
	Dashboard Processing Server CPU	

**Dashboard Processing Server CPU Metrics**

Expand All | Desynchronize Time Axes

DashboardDesignProcessingSe...	194	Live: 17 août 2010 00:55 to 17 août...
DashboardDesignCacheServer....	608	Live: 17 août 2010 00:54 to 17 août...
DashboardDesignCacheServer....	194	Live: 17 août 2010 00:54 to 17 août...

#### CENTRAL MANAGEMENT CONSOLE

Auditing

Off | Minimal

**Set Events**

**Common Events**

- View
- Refresh
- Prompt
- Create
- Delete
- Modify
- Save
- Search
- Edit
- Run
- Deliver
- Retrieve
- Logon
- Logout
- Trigger

# BI Platform Integration

## SAP BusinessObjects Dashboards 4.0

### New data processing layer

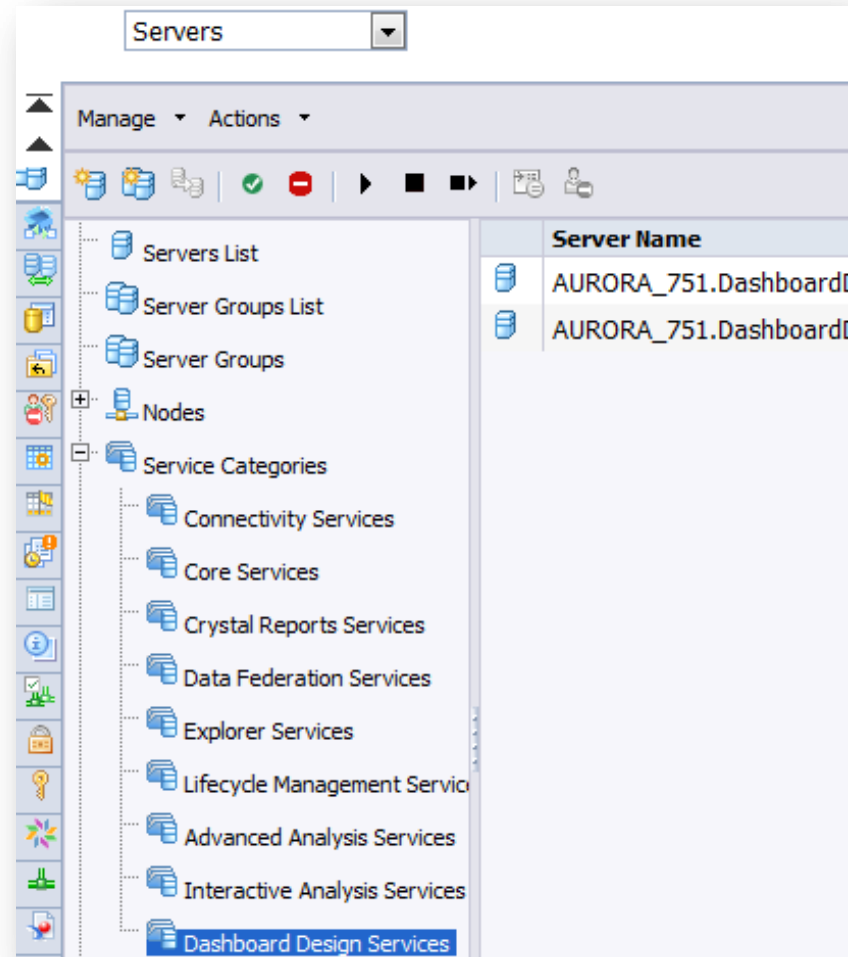
- Semantic layer structure
- Enterprise scalability
- Full BI platform integration

### CMC/CCM Management

- Add/remove servers
- Specify server groups
- Manage server status

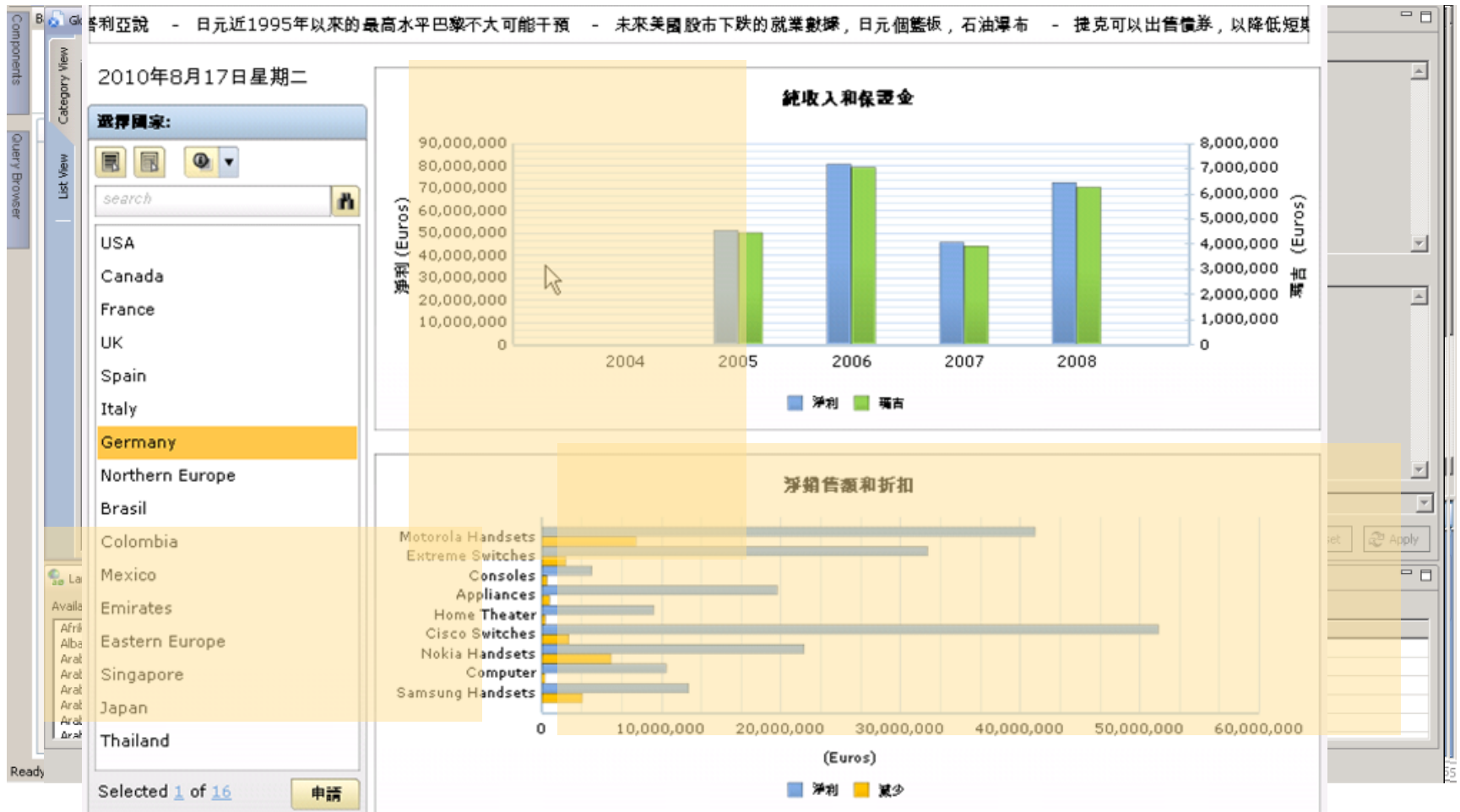
### Performance Tuning

- Cache server options
- Processing job settings



# Multi-lingual Dashboards

## SAP BusinessObjects Dashboards 4.0



# Common Semantic Layer Integration

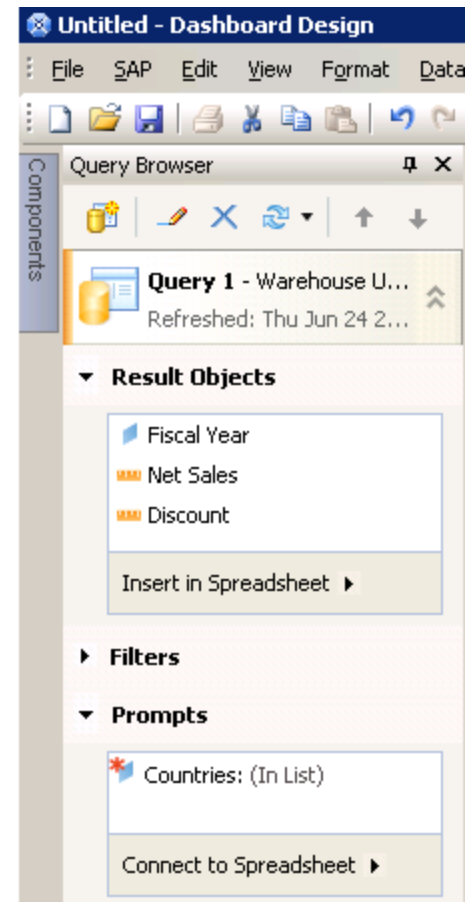
## SAP BusinessObjects Dashboards 4.0

### Simplify authoring of dashboards

- Query panel in Dashboards Designer
- Direct binding of Universe objects to visualizations
- Prompt selector to leverage prompt defined in Universe
- Separation of roles between data experts and dashboard authors

### Next Generation Semantic Layer

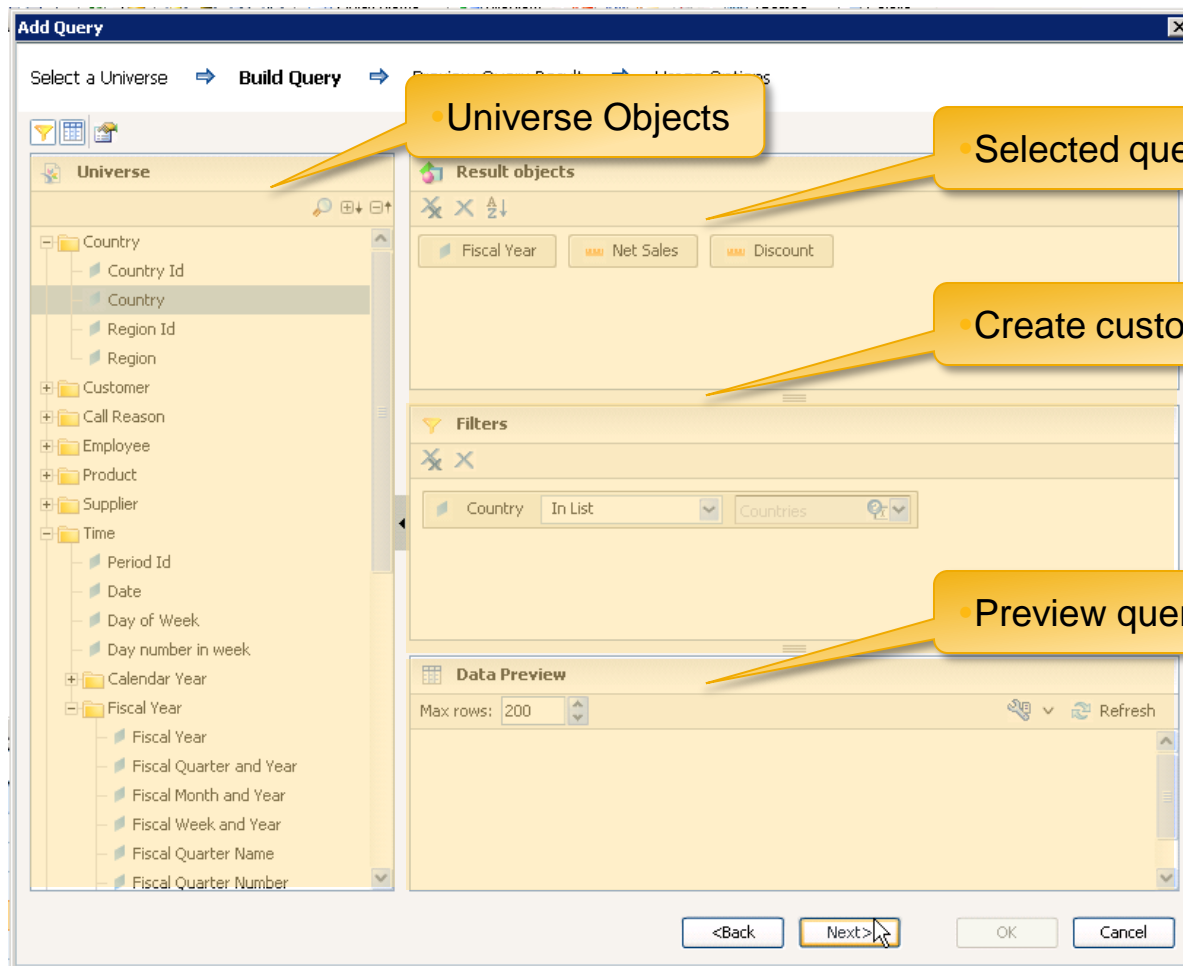
- Consistent access to data between clients and across sources
- One abstraction layer for all data sources



*Query Browser Panel  
in Dashboards Designer*

# Universe Integration in Dashboards Designer

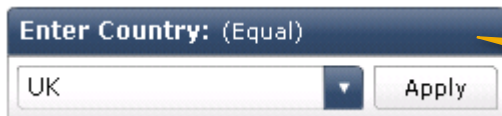
## SAP BusinessObjects Dashboards 4.0



# Prompt Selector

## SAP BusinessObjects Dashboards 4.0

- Auto-prompt based on the prompt data type and whether it is single or multi value prompt, or cascading list of values
- Directly uses the available List of Values
- Search or page through list of values, as well as, show or hide selected values

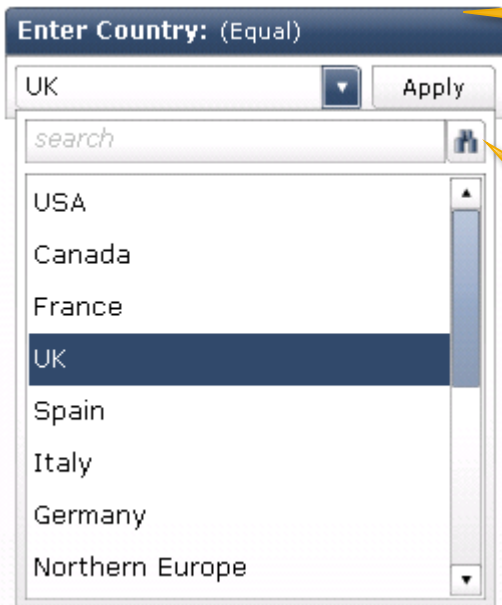


Enter Country: (Equal)

UK [v] Apply

• Single value

Multiple select (in list) from list of values



Enter Country: (Equal)

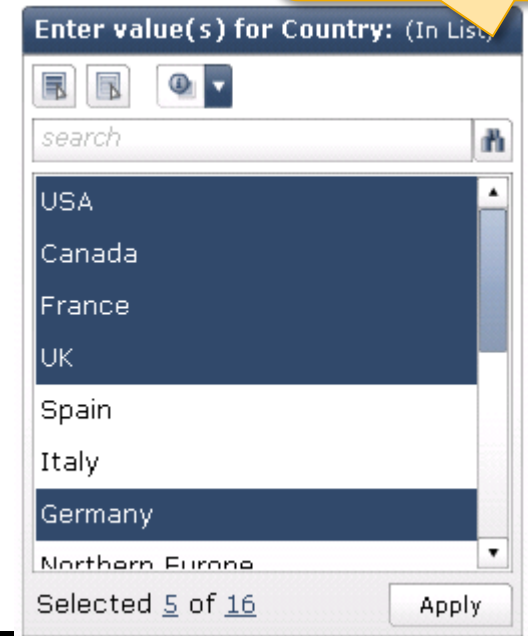
UK [v] Apply

search [m]

- USA
- Canada
- France
- UK
- Spain
- Italy
- Germany
- Northern Europe

Single value showing list of values

• Search or page through list of values



Enter value(s) for Country: (In List)

[m] [v] [i]

search [m]

- USA
- Canada
- France
- UK
- Spain
- Italy
- Germany
- Northern Europe

Selected 5 of 16 Apply



# Binding Universe Objects to Charts

## SAP BusinessObjects Dashboards 4.0

The screenshot displays the SAP BusinessObjects Dashboard Design interface. The main window shows a 'Gross Sales' bar chart with the following data series:

Region	Gross Sales
Asia PAC	~280,000,000
EEMEA	~80,000,000
Europe	~480,000,000
Latin America	~180,000,000
North America	~350,000,000

The configuration panel on the right, titled 'Column Chart 1', shows the following settings:

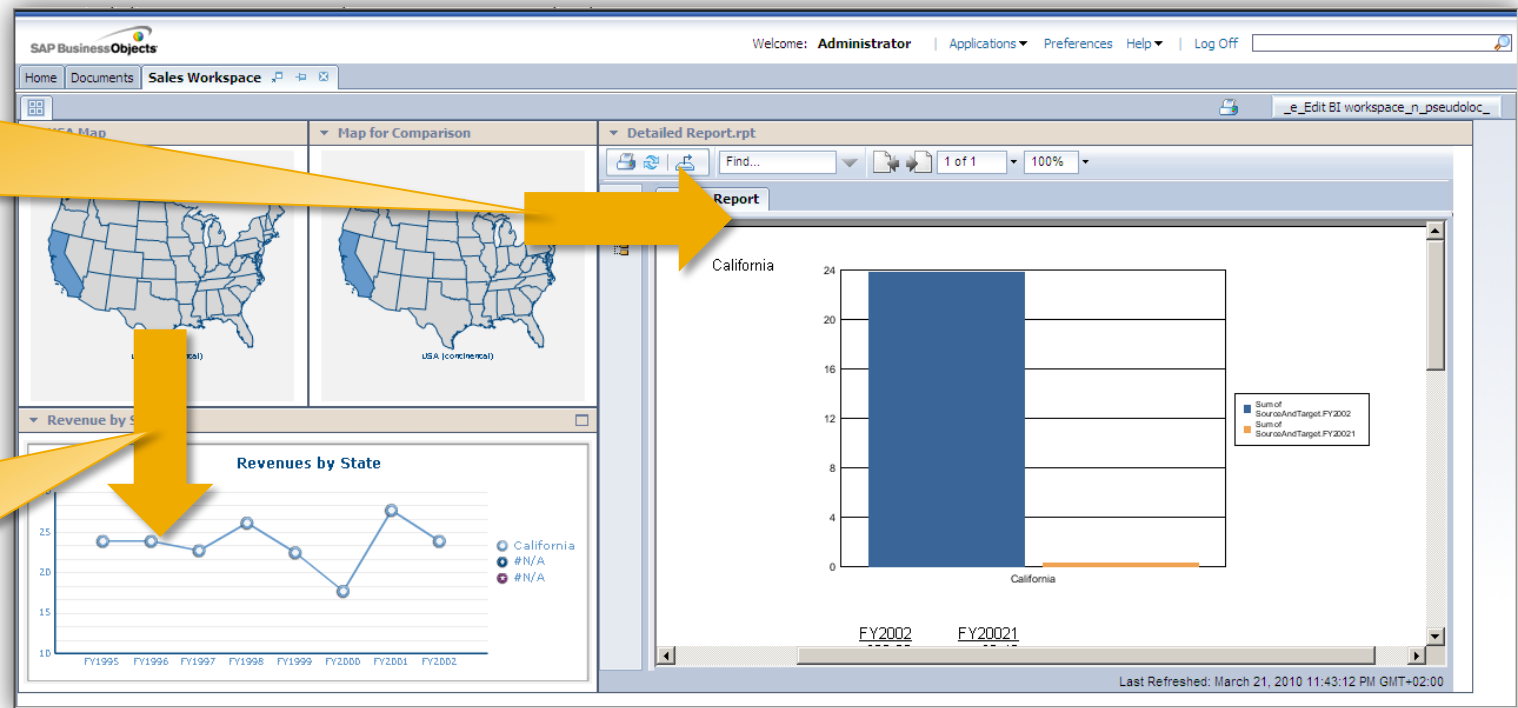
- Category (X) Axis: [Empty]
- Value (Y) Axis: [Empty]
- Secondary Value (Y) Axis: [Empty]
- Data:  By Range,  By Series
- Region (selected): Name: Region, Values(Y): Query 1: Gross Sales, Plot Series On:  Primary Axis,  Secondary Axis
- Category Labels(X): Query 1: Region

Yellow arrows indicate the binding process: one arrow points from the 'Gross Sales' object in the 'Result Objects' list to the chart, and another points from the 'Region' object in the 'Result Objects' list to the 'Category Labels(X)' field in the configuration panel.

# Contextual Drill Down in BI Workspaces

## SAP BusinessObjects Dashboards 4.0

- BI Workspaces replaces Dashboard Builder
- Improved and easier content linking capabilities
- Inter-Portlet Communication (IPC)



# The Content Linking Interface

## SAP BusinessObjects Dashboards 4.0

- **BI Workspaces: A new “content linking” interface through a visual editor**
  - Graphical view of links between modules
  - Exposes linking meta-data (prompts, range names, filters)
  - Only linkable modules are displayed

The screenshot shows the 'Content Linking' interface in SAP BusinessObjects Dashboards 4.0. It features a visual editor with four modules: 'USA Map', 'Detailed Report.rpt', 'Map for Comparison', and 'Revenue by State'. Lines connect the modules, with a '1' in a circle indicating a link. Below the editor is a table for 'Available connections' and 'Parameters mapping'.

Available connections			Parameters mapping	
	Analytics	Ports	Source Parameter	Target Parameter
Source	USA Map	XCELSIUS_OUT	StateName	Enter SourceAmount:
Target	Detailed Report.rpt	PROMPT_IN		
Source	USA Map	XCELSIUS_OUT		
Target	Revenue by State	XCELSIUS_IN		
Source	Map for Comparison	XCELSIUS_OUT		
Target	Revenue by State	XCELSIUS_IN		

Buttons: Hide Table, Zoom: 100%

# Key Capabilities

## SAP BusinessObjects Dashboards



### Key Capabilities

- Drag and drop dashboard designer with prebuilt templates
- Library of easy to understand visualization components for every business user
- Flexible deployment options including portals, SAP and BusinessObjects BI platforms, MS Office applications, and PDFs
- Static or live data via multiple data connectivity options
- Real-time enabled dashboards through direct integration with SAP BusinessObjects Event Insight

# Differentiators and Benefits

## SAP BusinessObjects Dashboards



### Top Differentiators

- Flexible dashboard output options
- Library of visualization components and templates for designing interactive dashboards



### Benefits

- **Flexibility for IT and business users** – With ability to create dashboards with many data sources and then publish in user friendly outputs and environments
- **Quicker deployment and adoption** – With most commonly used visualizations that business users will understand and templates for quick deployment

# SAP BusinessObjects Dashboards (Editions)



## SAP BusinessObjects Dashboards

- Enterprise solution for creating dashboards

## SAP BusinessObjects Dashboards Interactive Viewing

- Enterprise license for viewing dashboards

## SAP Crystal Dashboard Design products

- Solution sold through SAP partners, resellers, distributors and the e-Store

### *Description*

- Includes connectivity to the SAP BusinessObjects Business Intelligence platform and SAP Netweaver BW, Business Suite.

- Intended for users who view and interact with dashboards but do not create them.

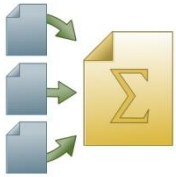
- Includes connectivity to live databases and Excel data, but not to SAP BusinessObjects Business Intelligence platform or SAP Netweaver BW or any SAP environments.

# Dashboard Edition Comparison

	SAP Crystal Dashboard Design Starter package		SAP BusinessObjects Dashboards
	SAP Crystal Dashboard Design Departmental	Dashboard Viewing option	
Basic data presentation components	<input checked="" type="checkbox"/>		<input checked="" type="checkbox"/>
Export to Adobe PDF and PPT	<input checked="" type="checkbox"/>		<input checked="" type="checkbox"/>
Dashboard creation components and export to Web and Adobe Flash, AIR	<input checked="" type="checkbox"/>		<input checked="" type="checkbox"/>
Live, refreshable data connections	Unlimited		Unlimited
Connectivity to Adobe LiveCycle Data Services	<input checked="" type="checkbox"/>		<input checked="" type="checkbox"/>
IBM WebSphere, MSFT SharePoint and Reporting Services integration	<input checked="" type="checkbox"/>		<input checked="" type="checkbox"/>
Crystal Reports Server connectivity and platform integration including Live Office support	<input checked="" type="checkbox"/>		<input checked="" type="checkbox"/>
Viewing rights for dashboards connected to live data sources		<input checked="" type="checkbox"/>	<input checked="" type="checkbox"/>
Deploy dashboards to more than 100 named users			<input checked="" type="checkbox"/>
Deploy dashboards to SAP BusinessObjects Edge and SAP BusinessObjects BI Platform			<input checked="" type="checkbox"/>
Access SAP ERP and SAP BW data			<input checked="" type="checkbox"/>

# SAP BusinessObjects Dashboards: Summary

---



You should now be able to

- Describe SAP BusinessObjects Dashboards including:
  - Key capabilities
  - Top differentiators
  - Benefits
- Effectively demonstrate sample dashboards



# Additional Resources

---



For more information on topics discussed in this course, see the following references:

- SAP User Interface Guidelines for Dashboard Design (documentation)
- Sample Dashboards
  - Additional Dashboard Samples  
<http://www.sdn.sap.com/irj/boc/xcelcius-samples>
  - Public Web Sites
    - [Dashboard tutorials](#)
    - [SAP BusinessObjects Dashboards](#)
    - [SAP Crystal Dashboard Design](#)



**Thank You!**