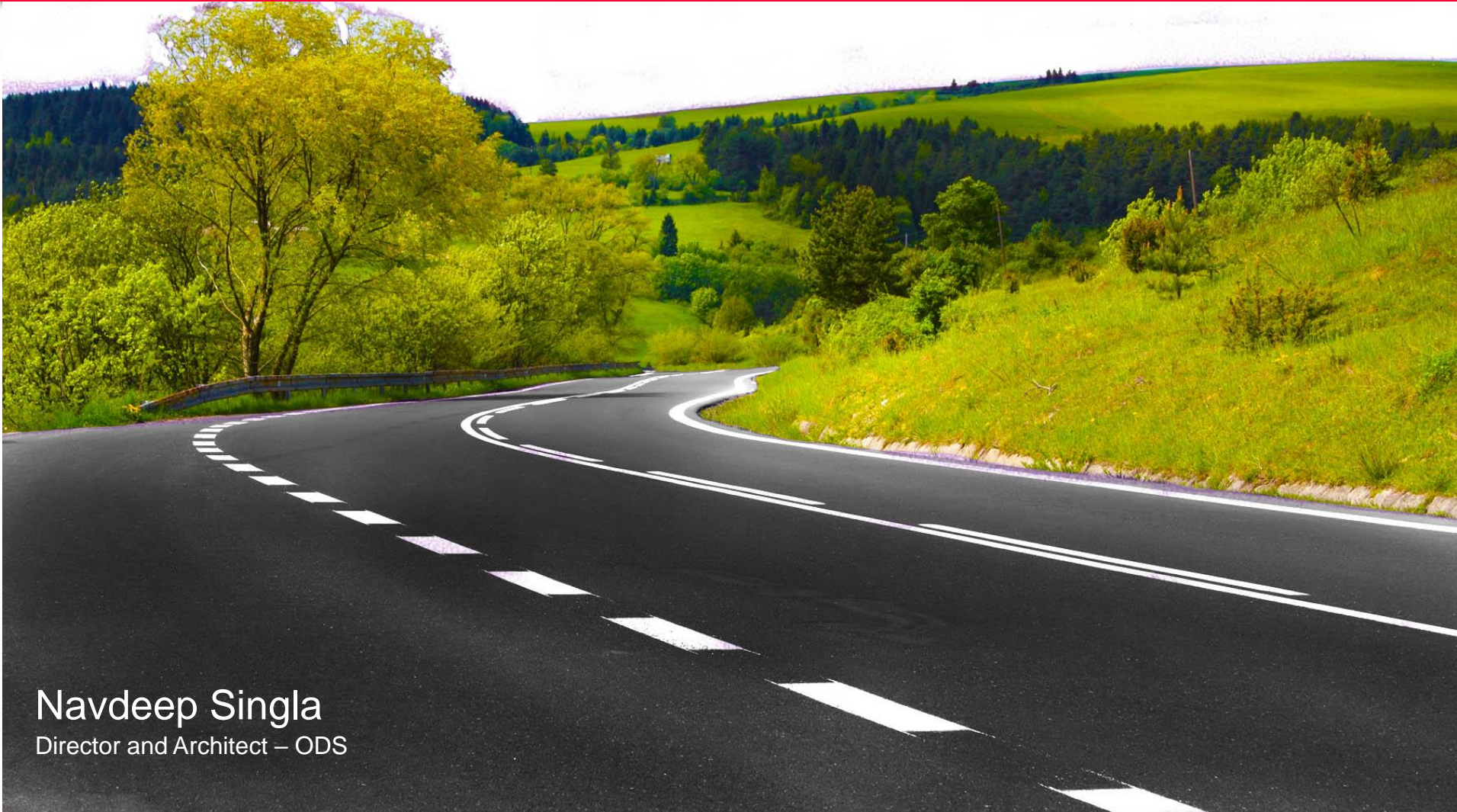


# SAP Mobile Asset Management & Field Service Roadmap



Navdeep Singla  
Director and Architect – ODS

**Right Technology, Right Design, Right Price**



# ODS Disclaimer



Views and opinions expressed in this presentation and webinar are entirely of ODS and in no way represent view and opinions of SAP. ODS assumes no responsibility and shall not be liable for any damages whatsoever in connection with any decision taken on the back of this material.

# SAP Disclaimer



## Legal disclaimer

The information in this presentation is confidential and proprietary to SAP and may not be disclosed without the permission of SAP. This presentation is not subject to your license agreement or any other service or subscription agreement with SAP. SAP has no obligation to pursue any course of business outlined in this document or any related presentation, or to develop or release any functionality mentioned therein. This document, or any related presentation and SAP's strategy and possible future developments, products and or platforms directions and functionality are all subject to change and may be changed by SAP at any time for any reason without notice. The information in this document is not a commitment, promise or legal obligation to deliver any material, code or functionality. This document is provided without a warranty of any kind, either express or implied, including but not limited to, the implied warranties of merchantability, fitness for a particular purpose, or non-infringement. This document is for informational purposes and may not be incorporated into a contract. SAP assumes no responsibility for errors or omissions in this document, except if such damages were caused by SAP's willful misconduct or gross negligence.

All forward-looking statements are subject to various risks and uncertainties that could cause actual results to differ materially from expectations. Readers are cautioned not to place undue reliance on these forward-looking statements, which speak only as of their dates, and they should not be relied upon in making purchasing decisions.



# Agenda



- 1 About Us – 5 min
- 2 Value proposition of MAM and FS : 10 min
- 3 SAP Roadmap at a glance : 10 min
- 4 SAP Work Manager roadmap in detail : 10 min
- 5 SAP Asset Manager – what we know : 5 min
- 6 SAP CRM Service Manager – brief update : 5 min
- 7 Q & A : 15 min



# About Us

Mission – Right Technology, Right Design, Right Price



- Niche IT consultancy providing Enterprise Mobility solutions and services.
- Years of experience rolling out Mobile Asset Management and Field Service solutions like SAP MAM, Syclo Work Manager, and bespoke build.



## Enterprise Mobility Strategy

- Proven Methodology
- Customer Specific
- Paint the bigger picture
- Delivery with direction



## Packaged Applications

- Syclo Work Manager, SAP MAM, FieldReach etc.
- Rapid Deployment Solutions available
- Fixed Price and Timeline



## Custom Build

- Using any mobile platform.
- UX driven design
- Expertise in offline mobile apps
- Opportunity to co-innovate.



## SAP Fiori and Personas

- Web enable your SAP systems
- Responsive design
- Simplified user experience



## Enterprise Mobility Management

- SAP Mobile Secure
- Integrated with Fiori cloud edition
- App wrapping using 3rd party plugins



# Value proposition of MAM and FS – 1/2

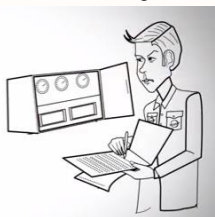
Boost Your Productivity, Workplace Safety and Reliability



Asset Management



Field Surveys



Factory Rounds



Field Technician

## Use Cases – Mobile Workforce

Relevant  
Information in  
the field

Integration  
with backend

Data capture  
and Updates  
on Device

Real time quality  
data for better  
decision making

## Requirements

**SAP customers have experienced these types of improvements in their workforce:**<sup>2</sup>

Safety incidents reduced to near **zero**

Work capacity increased by **10 to 20%**



Labor productivity increased by up to **50%**

Idle time and overtime reduced by **40 to 60%**

Rework reduced by **15 to 20%**

**In respect to their assets, SAP customers have seen these kinds of improvements:**<sup>2</sup>

Downtime and production delays reduced by **20 to 30%**

Preventable failures reduced by up to **90%**

Maintenance backlog reduced by up to **60%**

Inventory carrying costs reduced by **5 to 10%**

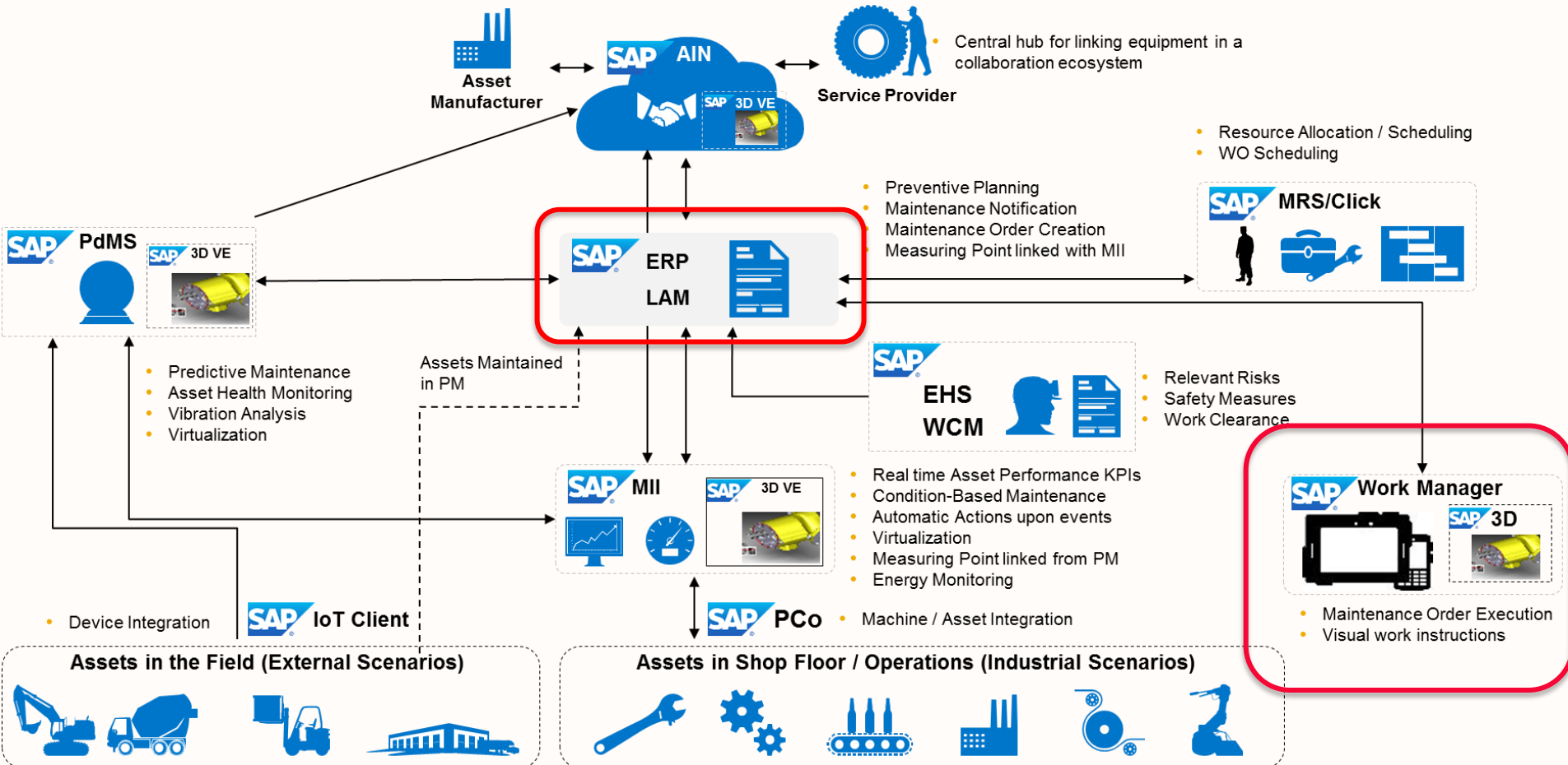


## Business Benefits



\* SAP Customer Reference Statistics

# EAM Lifecycle



# Journey so far



2012

- SAP acquires Syclo
- SAP Work Manager becomes roadmap solution for MAM/MAU

2013

- Work Manager 6.0 released on SMP 2.3
- Service Manager 4.0 released on SMP 2.3

2014

- Work Manager 6.1 and 6.2 released
- New innovations delivered e.g. OpenUI, GIS integration, Visual Enterprise integration etc.
- Service Manager 4.1 & 4.2 released

2015

- Work Manager 6.3 released
- Service Manager 4.3 released

2016

- S/4 HANA compatibility announced
- Work Manager 6.4 released
- Service Manager 4.4 release planned



# Roadmap at a glance



## SAP Work Manager

2016

- SAP Work Manager 6.4 available on-premise or in the cloud either on HCP or HEC.

2017

- Continuous Enhancements for Work Manager released 6.5 (TBC)

2020

- Continuous Enhancements for Work Manager 6.x released (TBC)

2022

- End of Maintenance for Agency platform and associated applications

## SAP Asset Manager

2016

- SAP Apple partnership announced

2017

- 1<sup>st</sup> release of SAP Asset Manager
- S/4 HANA only
- iOS only
- HCP based

2020

- Maturing SAP Asset Manager for iOS.
- Potential Android and Windows OS
- S/4 HANA only

2022

- Continuous Enhancements for Asset Manager released (TBC)



# What's new in SAP Work Manager 6.3 and 6.4



## SAP Work Manager 6.3

- Ability to update Equipment and Functional Location data
- Geo tagging Work Order/Notification/Equipment/Functional Location
- Create notification from Equipment or Functional Location
- View measurement reading history related
- View Work Order history related to an Equipment or Functional Location
- Attachment support for locally created Work Orders and Notifications
- Ability to edit Business Partner contact details
- [SAP video](#)

## SAP Work Manager 6.4

- Available in the cloud as a subscription based service
- UI5 Open UI control to help customers extend SAP Work Manager in a device agnostic manner.
- Inbound transaction queue support to help backend team manage transaction errors. This is useful to allow technician to carry on with his work and not get stuck due to one error in the application.
- Share devices between multiple users.
- Support for van/vehicle stock management to enable more granular inventory management.
- [SAP blog](#)

# SAP Work Manager Roadmap



## Today

- Manage work orders, notifications and timesheets
- LAM and inspections rounds
- Attachment, SSO and multiple languages
- ESRI ArcGIS integration
- SAP Visual Enterprise integration
- SAP ERP Customer Service component
- Crew management component
- Vehicle Stock component
- Meter management
- SAP HEC and HCP support
- SAP S/4 on-premise support

## Planned Innovations

- Support for Rounds management
- Vehicle Stock Enhancements
- New OS version support
- Security enhancements
- Support for Windows 10 Pro (WPF client only)
- Continuous technical and functional improvements

## Future Direction

- IoT connectivity
- Predictive maintenance
- Work order / asset reports
- Dynamic forms
- SAP EH&S integration
- SAP Quality Management integration
- User preferences and personalization
- Additional industry specific processes
- Work Clearance Management (WCM) support



# SAP Asset Manager



SAP Asset Manager is a new mobile application leveraging the digital core with SAP S/4HANA as well as HANA Cloud Platform as the IoT platform for managing work orders, notifications, condition monitoring, material consumption, time management and failure analysis. It supports the highly skilled workers who maintain enterprise assets to perform their job with complex information and business logic that is always available whether they are connected to the network or working in offline environments.

## Key capabilities

### Access to different sources of enterprise data and capabilities

Provides timely, relevant, and accurate information such as asset health, inventory, maintenance, and safety checklists

### Ready-to-use, extensible iOS native app – integrated with native features and services

Enables the worker to be more productive and seamlessly take advantage of the iOS ecosystem

### Intuitive UI: SAP Fiori (for iOS design language)

Provides context-rich visualization and actionable insights

### Mobile-enabled processes integrated with enterprise systems

Enables easy and timely execution of end-to-end asset management on the go

This is the current state of planning and may be changed by SAP at any time.





# SAP Asset Manager Roadmap



## Today

- See Announcement : [Apple & SAP Partner to Revolutionize Work on iPhone & iPad](#)

## Planned Innovations

- Manage work orders, notifications and timesheets
- SAP HANA Cloud Platform support
- SAP S/4HANA on-premise support
- SAP Fiori for iOS User Interface
- Robust Offline Functionality
- Attachment handling
- Single Sign On Support
- ESRI ArcGIS integration

## Future Direction

- Android and Windows Client Support
- LAM & rounds
- SAP MRS integration
- Utilities meter management)
- Push
- Vehicle Stock
- Social Integration
- Crew Reporting
- Classification viewing/editing
- IoT integration
- AIN integration



# SAP CRM Service Manager



With the SAP CRM Service Manager mobile application, you can maximize efficiency and effectiveness of your field technicians by providing them real-time access to relevant information and tools. The app connects to the SAP Customer Relationship Management (SAP CRM) application and enables status updates, last-minute changes, and accurate data capturing to help achieve higher first-time fix rates.

## Business Value

- Improve first-time problem resolution
- Streamline communications between field & office
- Meet SLA compliance
- Lower inventory carrying cost and wasted travel
- Increase customer satisfaction and revenue
- Minimize lost revenue and shorten billing cycles

## Use Cases

- Enables workers to manage service orders and create confirmations with signature capture
- Record status, materials, problems, actions, expenses, customer signatures and more
- View customer data, equipment, install base listings, entitlements, contracts and service history
- Vehicle stock management
- Leverage GIS/GPS for directions

**SAP's industry leading mobile app for service order management to get the job done right**



# SAP CRM Service Manager Roadmap



## Today

- Service Order Management
- Service Warranty and Contract
- Resource Planning
- Confirmation enhancements and Surveys
- Calendar Integration, Maps and directions
- Inbound Transaction Management
- Attachments , Single Sign On support
- ESRI ArcGIS Integration
- SAP Visual Enterprise Integration
- Vehicle Stock

## Planned Innovations

- Continuous technical and functional improvements in 2016

## Future Direction

- Windows 10 support
- SAP HANA Cloud Platform Support
- Predictive Service



# Possible Next Steps and Q & A



- Any queries related to Enterprise Mobility and this roadmap
- Free enterprise mobility discovery workshop
- Demo/PoC of SAP Work Manager, CRM Service Manager, and Inventory Manager
- Free surgery to explore how you can enhance your existing SAP EAM footprint

[info@ondevice.co.uk](mailto:info@ondevice.co.uk)

[www.ondevice.co.uk](http://www.ondevice.co.uk)