

# SAP Analytics

November 2017

# Solutions



Business Intelligence

# SAP Analytics Approach

## Multiple BI styles ...

- ❑ Enterprise reporting
- ❑ Data discovery
- ❑ Predictive analytics
- ❑ Self-service BI
- ❑ Dashboarding

## ... Sharing common services

- ❑ Data access and quality
- ❑ Security of platform
- ❑ User security rights
- ❑ Scheduling and bursting

**Without separate implementations, hardware,  
support schedules, and contracts**



# SAP Lumira 2.x

A **PLATFORM** for trusted data discovery, data visualization, and storytelling

SAP Lumira **quickly** helps business people of **all skills** to ...

- Gain insights from trusted enterprise data sources **AND** personal data
- Enhance those insights through interactive visualizations, self-generated stories, **OR** tailored analysis applications
- Share those stories and applications via desktop, browsers, and mobile devices



# SAP Lumira 2.x

A **PLATFORM** for trusted data discovery, data visualization, and storytelling (cont.)

Lumira,  
discovery edition



Lumira,  
designer edition



Lumira Server



BI Platform





# SAP Lumira 2.x

A **PLATFORM** for trusted data discovery, data visualization, and storytelling (cont.)

## Business Users...

- ❑ Acquire, manipulate, merge, and mash all kinds of data, online or offline
- ❑ Explore and analyze
- ❑ Create and share stories



## Designers & Developers...

- ❑ Full control of application look and feel and user interaction
- ❑ Create shared UI elements
- ❑ Cost-effective management of large corporate BI deployments

- 
- ❑ Add-On installation to the BI Platform
    - ❑ 4.1 SP8+ OR
    - ❑ 4.2 SP2+
  - ❑ Hosts the execution runtime of Discovery stories and Designer applications



- ❑ Users/Consumers can access SAP Lumira documents from the BI Launchpad and...
  - ❑ Interact with data
  - ❑ Create and share personal views
  - ❑ Export data
  - ❑ Publish/print

# Optimized Access to Governed, Secure Data



SAP BW



Universe (UNX)\*\*



SAP HANA

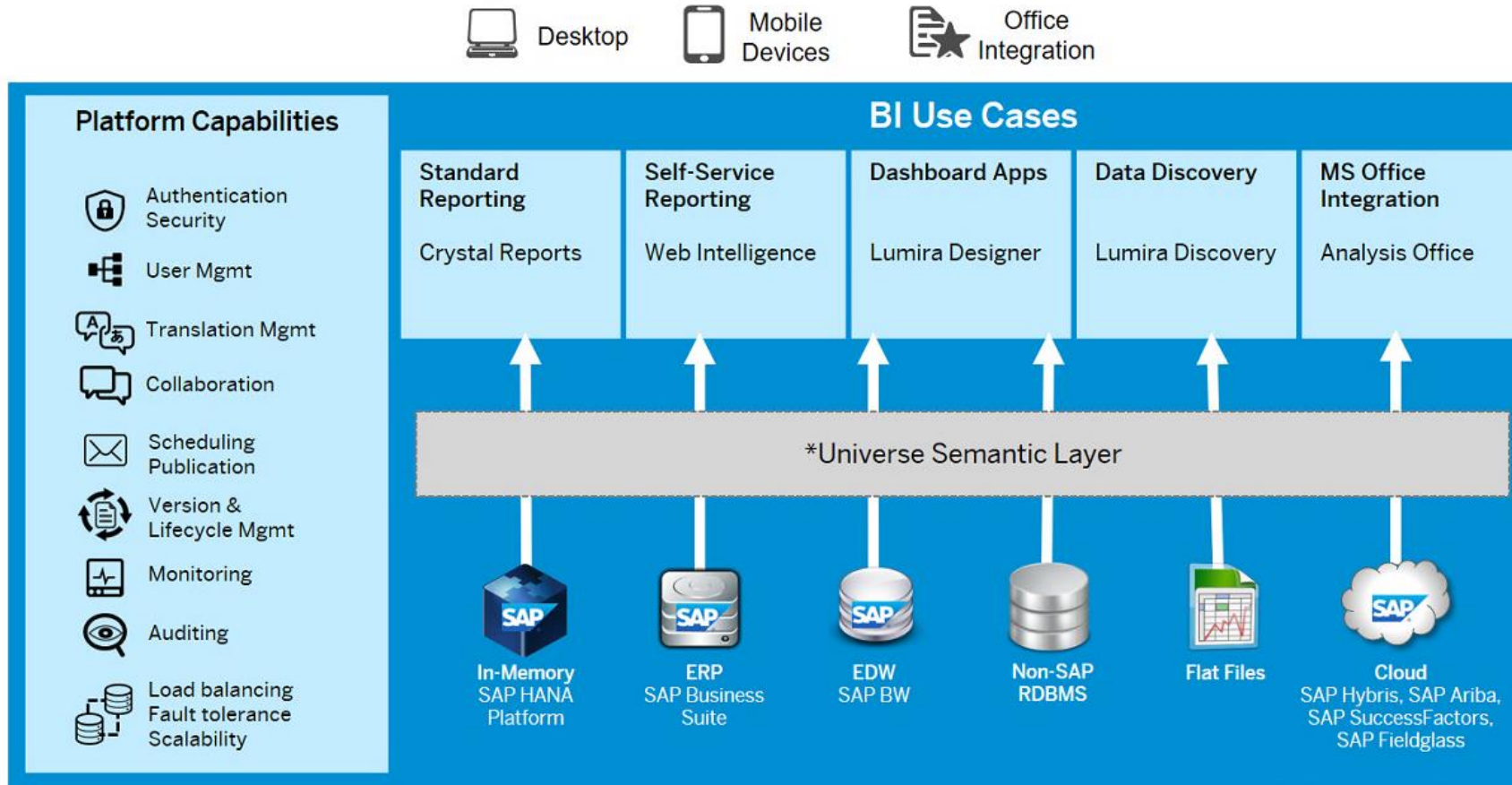
## SAP BusinessObjects BI Platform

Live access with high fidelity

No duplicate extracts with different numbers

Focus on business transformation not data extraction

# BI Platform



\*Not required



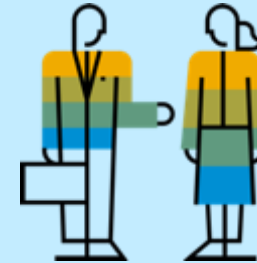
# SAP Lumira 2.x



**Bridge** business and IT



**Optimized access to governed** secure data



**Simplify** the user and administration experience

# Wrap-Up and Resources





# Key Links for more information

<b>SAP Lumira</b>	<b>SAP Lumira Main Site:</b>	<a href="http://saplumira.com">http://saplumira.com</a>
	<b>SAP Community Network, BI Community:</b>	<a href="https://www.sap.com/products/analytics/business-intelligence-bi.html">https://www.sap.com/products/analytics/business-intelligence-bi.html</a>
	<b>SAP Lumira Official Product Tutorials:</b>	<a href="http://scn.sap.com/docs/DOC-26507">http://scn.sap.com/docs/DOC-26507</a>
	<b>SAP Lumira Extensions:</b>	<a href="https://www.sapappcenter.com/">https://www.sapappcenter.com/</a>
	<b>SAP Lumira Blog:</b>	<a href="https://blogs.sap.com/">https://blogs.sap.com/</a>
	<b>SAP Lumira Enablement:</b>	<a href="http://scn.sap.com/docs/DOC-55921">http://scn.sap.com/docs/DOC-55921</a>
	<b>SAP Lumira Roadmap*:</b>	<a href="https://www.sap.com/products/roadmaps.html">https://www.sap.com/products/roadmaps.html</a>
	<b>Register for SAP Lumira 2.0 Newsletter:</b>	<a href="http://info.sapdigital.com/LUM-NSLTR-REG.html">http://info.sapdigital.com/LUM-NSLTR-REG.html</a>
	<b>Top 10 Customer Stories</b>	<a href="http://blog-sap.com/analytics/2015/02/18/top-10-dataviz-customer-stories-with-saplumira/">http://blog-sap.com/analytics/2015/02/18/top-10-dataviz-customer-stories-with-saplumira/</a>
<b>Provide</b>	<b>SAP Idea Place</b>	<a href="https://ideas.sap.com">https://ideas.sap.com</a>
<b>Feedback</b>	<b>Influence programs*</b>	<a href="http://service.sap.com/influence">http://service.sap.com/influence</a>
	<b>SAP User Groups</b>	<a href="http://www.sapusergroups.com/">http://www.sapusergroups.com/</a>

\* Requires login credentials to the SAP Service Marketplace