



RAMS
BUILDING A BETTER WORLD



Sarovar

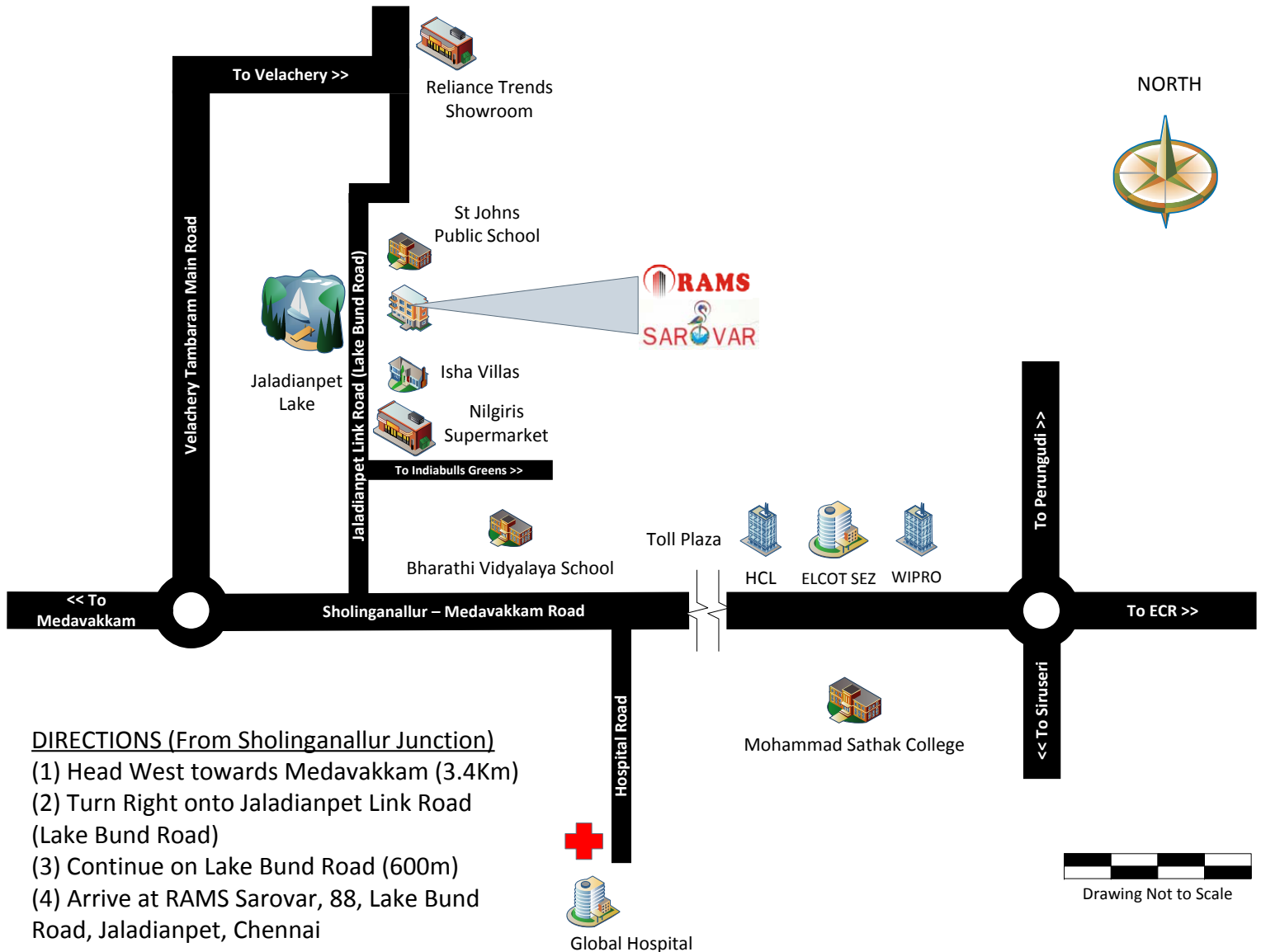
Luxury Apartments @ Jaladianpet

PAGE	CONTENT DESCRIPTION
2	Project Summary
3	Location Map
4	Site Layout
5	Building Elevation
6	Floor Plan (Block – A)
7	Floor Plan (Block – B)
8	Floor Plan (Block – C)
9	Floor Plan (Block – D)
10	Floor Plan (Block – E)
11	Floor Plan (Block – F)
12	Floor Plan (Block – G)
13	RAMS General Apartment Specifications
14	RAMS Detailed Electrical Specifications

RAMS 'Sarovar'

PROJECT SUMMARY

Address	88, Jaladianpet Link Road (Lake Bund Road), Jaladianpet, Chennai	
Nearest Landmarks	<ul style="list-style-type: none">• St Johns School (100m)• Nilgiris Supermarket @ Jaladianpet (200m)• Bharathi Vidyalaya School (800m)• Global Hospital (1.5 Km)• HCL Special Economic Zone (3 Km)• Mohamed Sathak College (3.4 Km)• Sholinganallur Junction (3.8 Km)	
Project Details	<ul style="list-style-type: none">• 7 Blocks• Stilt + 2 floors• 42 Units	
Common Amenities	<ul style="list-style-type: none">• Backup Power• Gym• Covered Car Park• Landscaping• Rainwater Harvesting• Sump• Borewell• Gated Community with 24x7 Security	
Apartment Types	2BHK	730 to 1070 sqft
	3BHK	1170 to 1820 sqft
Apartment Price Range	46 lacs to 1.05 crores	
Floor Plans	Also available online @ www.ramsbuilders.com	
Contact Us	61 (28) Poes Garden Chennai 600 086 India M: +91 98417 47262 / 98840 55522 O: +91 44 24992856 / 2866	
Email	info@ramsbuilders.com	

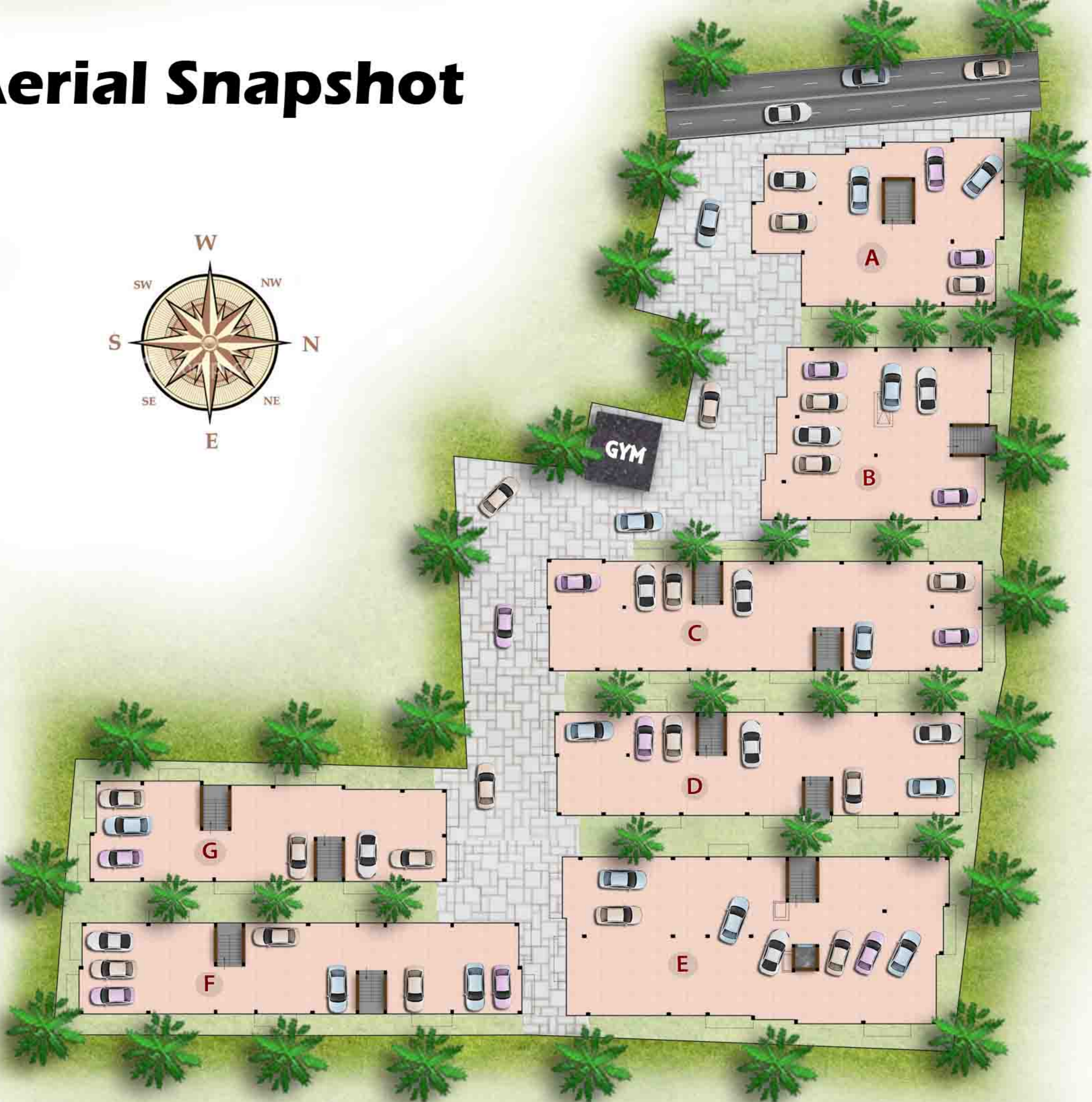
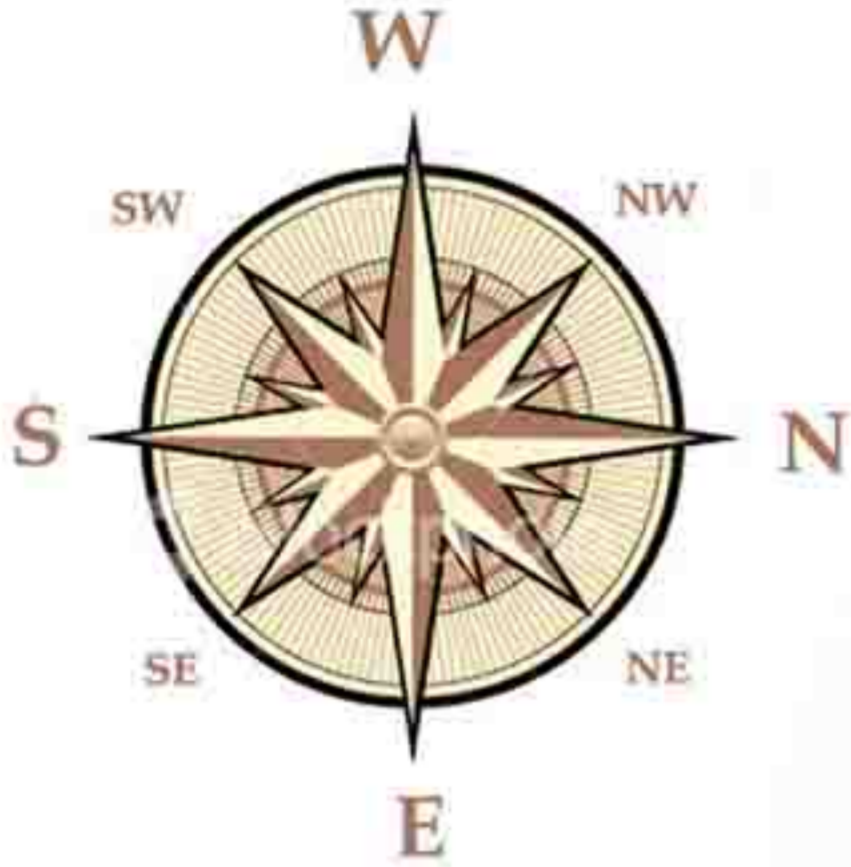


Global Hospital



Drawing Not to Scale

Aerial Snapshot





Typical Floor Plan - Block A

A3/A6
1025 Sqft

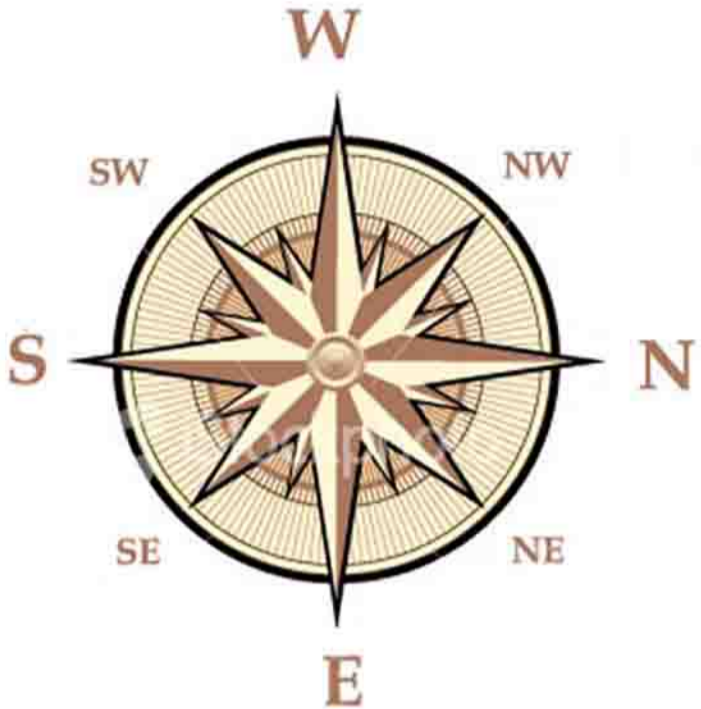


A1/A4
845 Sqft

A2/A5
1020 Sqft



Typical Floor Plan - Block C



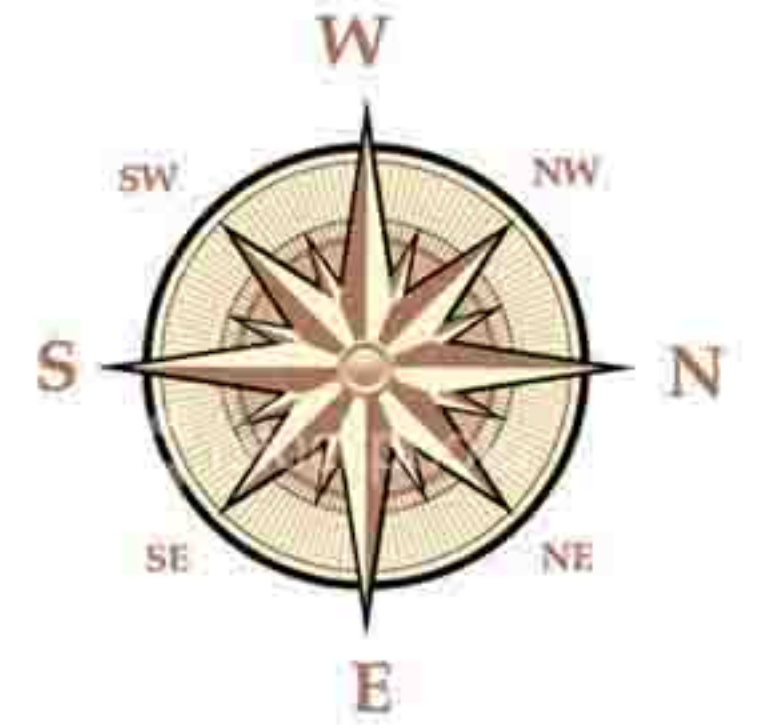
C1/C4
1335 Sqft

C2/C5
1070 Sqft

C3/C6
1300 Sqft



Typical Floor Plan - Block D



D1/D4
1175 Sqft

D2/D5
935 Sqft

D3/D6
1170 Sqft

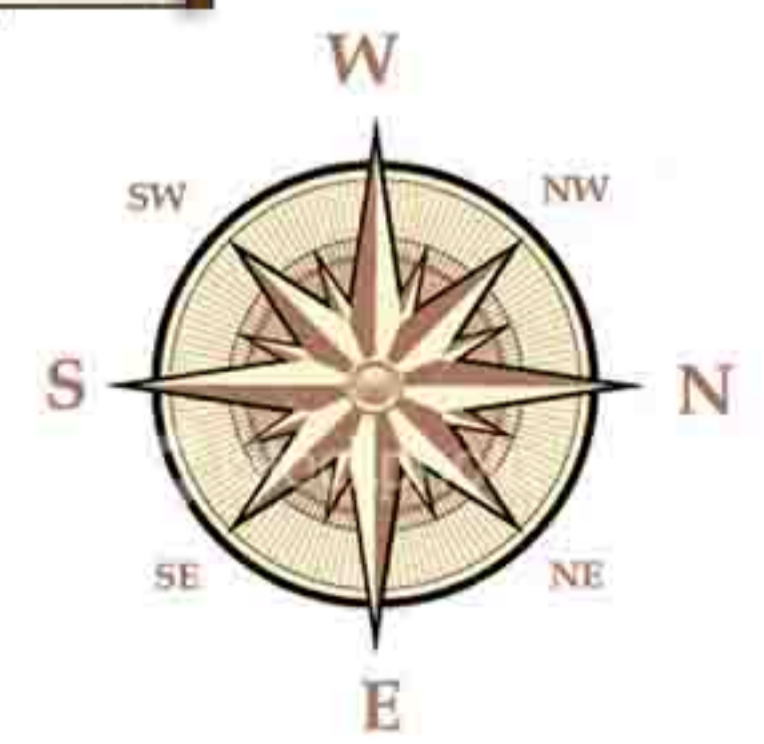
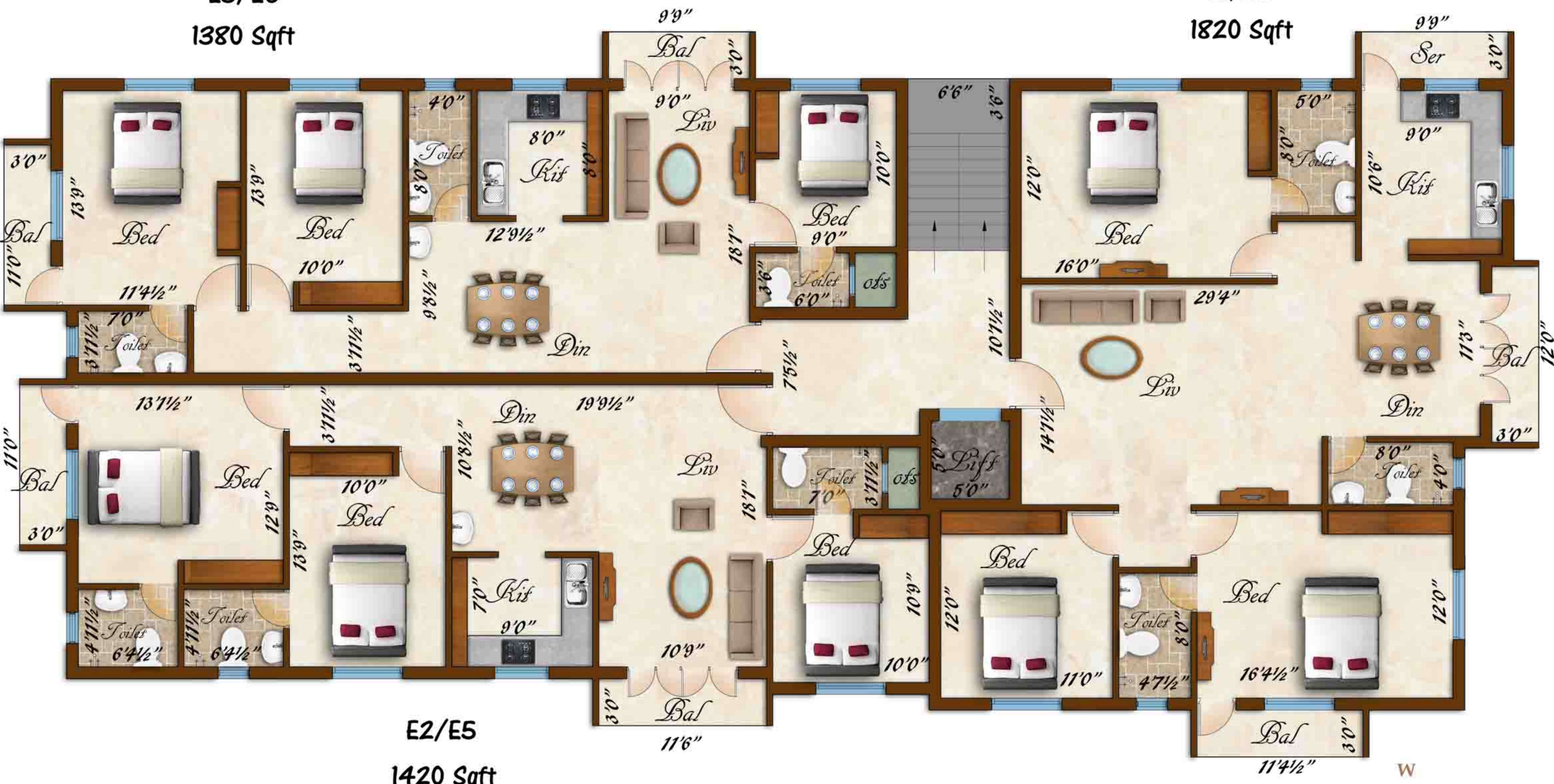


Typical Floor Plan - Block E

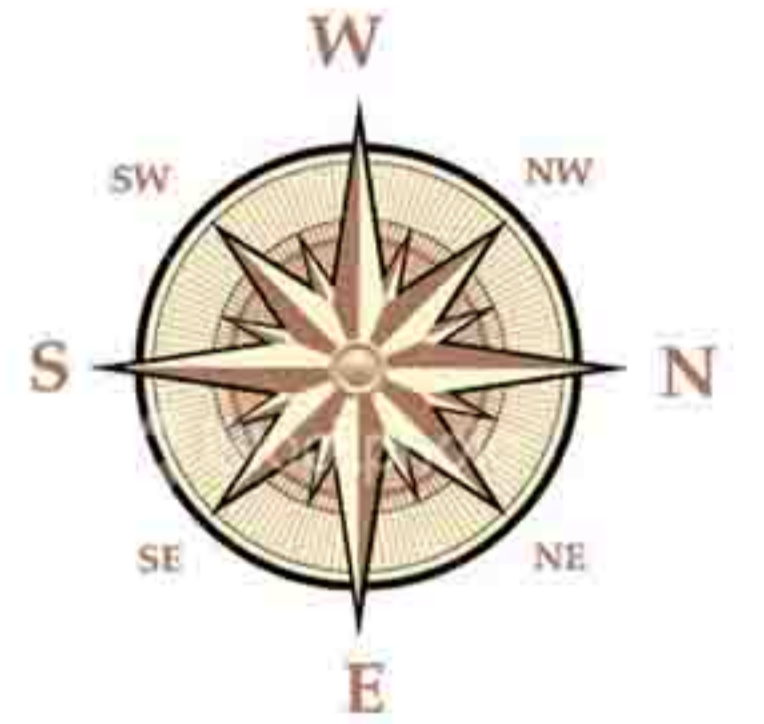
E3/E6
1380 Sqft

E1/E4
1820 Sqft

E2/E5
1420 Sqft



Typical Floor Plan - Block F



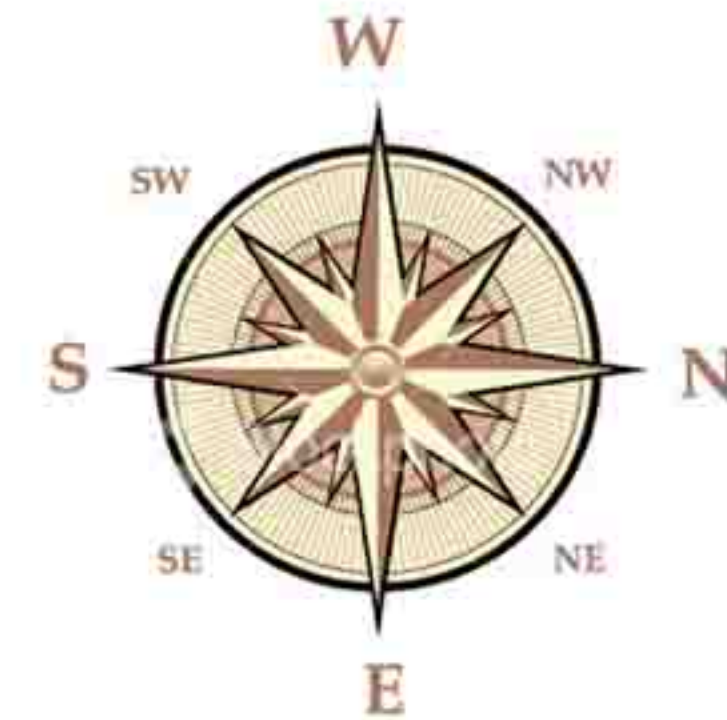
F1/F4
1040 Sqft

F2/F5
980 Sqft

F3/F6
1040 Sqft



Typical Floor Plan - Block G



G1/G4
965 Sqft

G2/G5
815 Sqft

G3/G6
825 Sqft



RAMS

APARTMENT SPECIFICATIONS – IN DETAIL

GENERAL^{*+}

Doors	<ul style="list-style-type: none">• Main door and bedroom doors will have teakwood frames and flush doors with varnish• Bathroom doors will have teakwood frames with resin coated flush doors
Windows	<ul style="list-style-type: none">• All teakwood• French window to balcony area (in living or dining area)• Mild steel grills for all windows
Bedrooms	<ul style="list-style-type: none">• Lofts on one side
Flooring	<ul style="list-style-type: none">• 2' x 2' joint free vitrified tiles for all rooms except toilets
Kitchen	<ul style="list-style-type: none">• Platform with granite top• Stainless steel sink• Wall tiles up to 2' height from the platform• L-shaped lofts• Cudappah shelf for storage• Provision for exhaust fan or chimney
Toilets	<ul style="list-style-type: none">• 12" x 12" Anti-skid ceramic flooring• Wall tiles up to 7' height from the floor level
Sanitary Fixtures	<ul style="list-style-type: none">• Parryware Make• Metro brand or similar chromium plated fittings• Wash basin provision• EWC for all toilet(s)• Standard color of all fixtures: white
Painting	<ul style="list-style-type: none">• Emulsion Paint

ELECTRICAL PROVISIONS^{+\$}

Entrance	<ul style="list-style-type: none">• One bell point• One light point
Living	<ul style="list-style-type: none">• One TV point• One Telephone point• Two light points on wall• Two 5A points (including one on switchboard)• Fan and chandelier points
Dining	<ul style="list-style-type: none">• Two light points on wall• One 15A for fridge• One 5A point on switchboard• Fan point
Master Bedroom	<ul style="list-style-type: none">• Two light points on wall• Two 5A points (including one on switchboard)• One 20A point for A/C• Fan point
Other Bedrooms	<ul style="list-style-type: none">• Two light points on wall• Two 5A points (including one on switchboard)• Concealed pipeline provision for A/C• Fan point
Kitchen	<ul style="list-style-type: none">• One light point• Two 5A points (one on switchboard and one above platform)• One 5A point for exhaust fan or chimney
Balcony	<ul style="list-style-type: none">• One light point
Toilets	<ul style="list-style-type: none">• One light point• One 15A point for geyser
Service Area ^{**}	<ul style="list-style-type: none">• One light point• One 15A point for washing machine

** Specifications quoted are subject to change based on material availability*

+ Upgrades or modifications to standard specifications are possible at an additional cost

\$ All switches will be Anchor modular switches or equivalent

*** In absence of service area, washing machine provision will be provided at an alternate convenient spot*